

Beachcombing IN THE **BAHAMAS**

Winter Season

1953



BY AIR WITH
BAHAMAS AIRWAYS
LIMITED

(A SUBSIDIARY OF B.O.A.C.)

OAKES FIELD NASSAU, BAHAMAS

Telephone 2262

Effective JANUARY 16, 1953

ELEUTHERA

	BH17	BH31	BH15	BH21		BH22	BH16	BH32	BH18
CODE	Tue. Thu. Sat.	Tue. Thu. Sat.	Sun. Wed. Fri.	Sun. Wed. Fri.		Sun. Wed. Fri.	Sun. Wed. Fri.	Tue. Thu. Sat.	Tue. Thu. Sat.
NAS	3.00	8.30	3.30	8.30	Lv. NASSAU Arr.	10.00	5.00	10.40	5.10
SPW			F	F	SPANISH WELLS				
HBI			4.00	9.00	Arr. HARBOUR ISLAND Arr.	9.30	4.30		
GHB	3.40	9.10			Arr. GOVERNOR'S HARBOUR (S)				
GHB	4.00	9.30			Lv. GOVERNOR'S HARBOUR (S)				
RSD	4.15	9.45			Arr. ROCK SOUND Lv.			10.00	4.30

ABACO — GRAND BAHAMA

	BH27	BH23		BH24	BH28
CODE	Alt. Mon.	Alt. Mon.		Alt. Mon.	Alt. Mon.
NAS	10.30	8.30	Lv. NASSAU Arr.	5.00	1.05
SPT		F	SANDY POINT		F
MHB		9.15	Arr. MARSH HARBOUR Lv.	4.15	
HTN		9.40	Arr. HOPE TOWN Lv.	3.45	
MOC		10.15	Arr. MAN-O-WAR CAY Lv.	3.15	
GTC		11.00	Arr. GREEN TURTLE CAY Lv.	2.30	
WEG	11.35		Arr. WEST END G.B. Lv.		12.00M

BH27/28 Operates Alternate Mondays commencing Jan. 19, 1953

BH23/24 Operates Alternate Mondays commencing Jan. 26, 1953

ANDROS — BIMINI — CAT CAY

	BH25	BH33	BH29		BH30	BH34	BH26
CODE	Alt. Tue.	Mon. Wed. Fri. Sat.	Mon. Wed. Fri. Sat.		Mon. Wed. Fri. Sat.	Mon. Wed. Fri. Sat.	Alt. Tue.
NAS	8.30	4.00	7.30	Lv. NASSAU Arr.	8.30	5.00	4.00
FCK		4.20	7.50	Arr. FRENCH CREEK Lv.	8.10	4.40	
CCY	F			CAT CAY			F
BIM	9.30			Arr. BIMINI Lv.			3.00

BH25/26 Operates Alternate Tuesdays commencing Jan. 13, 1953

F FLAG STOP

S SUBJECT TO SEA CONDITIONS

A.M. TIMES PRINTED IN LIGHT FACE

P.M. TIMES PRINTED IN BOLD FACE

INTER ISLAND FARES

	STERLING		DOLLARS	
	One Way	Round Trip	One Way	Round Trip
FROM NASSAU TO				
Green Turtle Cay	4.17. 0	8.15. 0	13.60	24.50
Man-O-War Cay	4.10. 0	8. 2. 0	12.60	22.70
Hopetown	4.10. 0	8. 2. 0	12.60	22.70
Marsh Harbour	4.10. 0	8. 2. 0	12.60	22.70
Sandy Point	3.15. 0	6.15. 0	10.50	18.90
West End Grand Bahama	5. 3. 0	9. 6. 0	14.50	26.00
Spanish Wells	2.15. 0	5. 0. 0	7.70	14.00
Harbour Island	2.15. 0	5. 0. 0	7.70	14.00
Governor's Harbour	3.17. 0	6.19. 0	10.80	19.50
Rock Sound	3.17. 0	6.19. 0	10.80	19.50
Bimini	5.10. 0	10. 0. 0	15.40	28.00
Cat Cay	5. 3. 0	9. 6. 0	14.50	26.00
Fresh Creek	3. 0. 0	6. 0. 0	8.40	16.80
FROM SPANISH WELLS TO				
Harbour Island	14. 0	1. 6. 0	2.00	3.70
Governor's Harbour	1.15. 0	3. 3. 0	4.90	8.90
Rock Sound	2.15. 0	5. 0. 0	7.70	14.00
FROM BIMINI TO				
Cat Cay	1. 8. 0	2.10. 0	3.90	7.00
FROM HOPETOWN TO				
Marsh Harbour	14. 0	1. 6. 0	2.00	3.70
Man-O-War Cay	14. 0	1. 6. 0	2.00	3.70
Sandy Point	1. 8. 0	2.10. 0	3.90	7.00
FROM MARSH HARBOUR TO				
Man-O-War	14. 0	1. 6. 0	2.00	3.70
Sandy Point	1. 8. 0	2.10. 0	3.90	7.00
FROM MAN-O-WAR CAY TO				
Sandy Point	1. 8. 0	2.10. 0	3.90	7.00
FROM GREEN TURTLE CAY TO				
Hopetown	1. 8. 0	2.10. 0	3.90	7.00
Marsh Harbour	1. 8. 0	2.10. 0	3.90	7.00
Man-O-War Cay	1. 8. 0	2.10. 0	3.90	7.00
Sandy Point	2. 9. 0	4. 8. 0	6.90	12.30
FROM HARBOUR ISLAND TO				
Governor's Harbour	1.15. 0	3. 3. 0	4.90	8.90
Rock Sound	2.15. 0	5. 0. 0	7.70	14.00
FROM GOVERNOR'S HARBOUR TO				
Rock Sound	1. 2. 0	2. 0. 0	3.10	5.60

CHARTER RATES

Standard rates for the Company's fleet of Amphibious Aircraft are —

For 20 seater Catalina aircraft £53.10. 0 or \$150.00 per hour
 For 7 seater Goose aircraft £35. 0. 0 or \$ 98.00 per hour
 For 4 seater Widgeon aircraft £25. 0. 0 or \$ 70.00 per hour

For further particulars of Beachcombing tours and B.A.L. apply to any of the undermentioned.

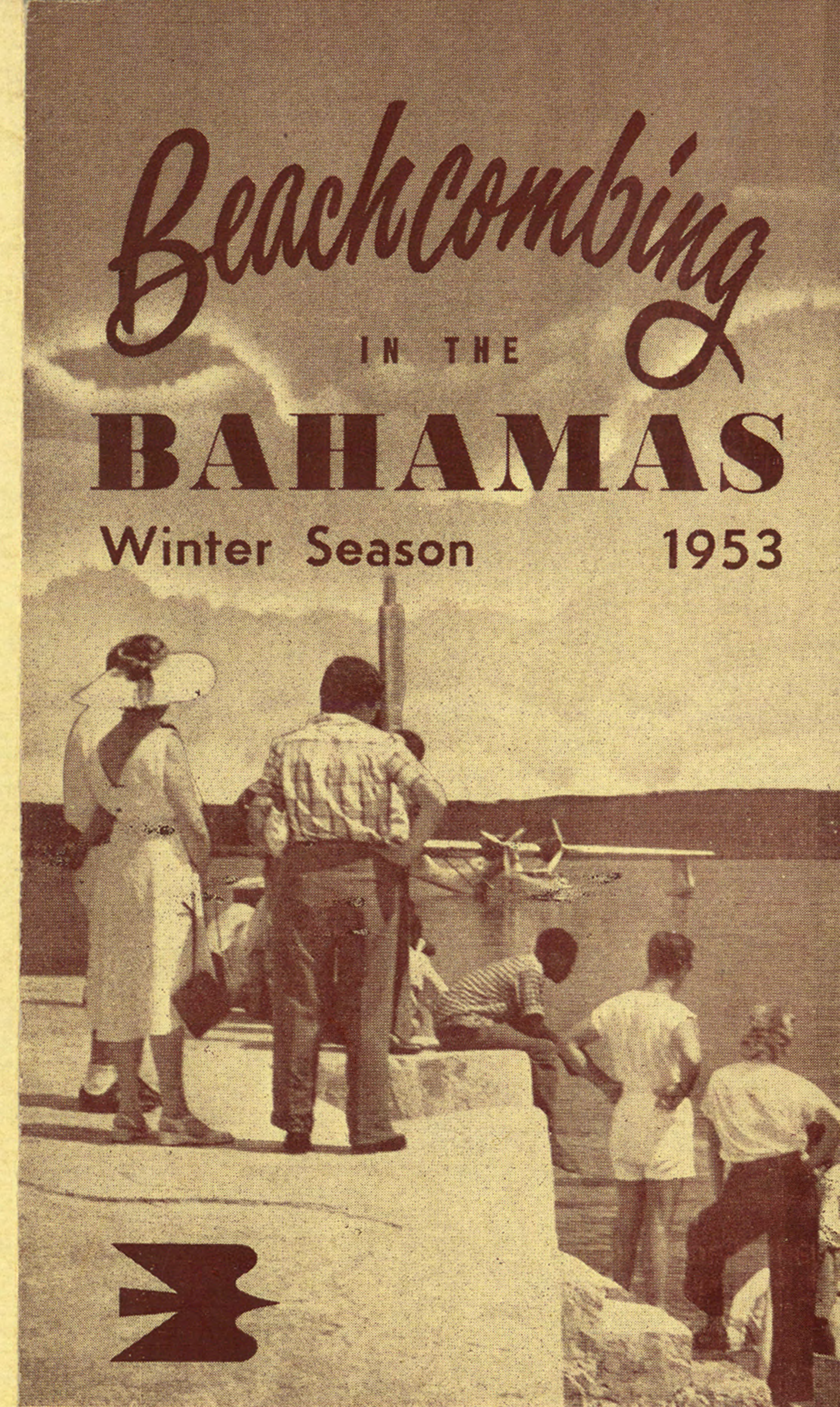
OFFICES OF BRITISH OVERSEAS AIRWAYS CORPORATION

New York 17, N. Y. 342 Madison Avenue Murray Hill 7-8900	Chicago 3, Ill. 37 South Wabash Avenue Franklin 2-3987	Los Angeles 14, Calif. 530 West Sixth Street Vandike 8176
Washington 6, D. C. 1124 Connecticut Ave., N.W. Executive 3-3944	Kingston, Jamaica—B.W.I. British West Indian Airways 75½ Harbour Street	San Francisco 8, Calif. 347 Stockton Street YUkon 2-3670
Montreal, Que. Laurentien Hotel University 6-5861	Toronto, Ont. 32 King Street Empire 3-4323	Nassau, Bahamas Eastbourne House Tel. 2262
Miami 32, Fla. Columbus Hotel 312 N. E. 1st Street 82-8693	Detroit 26, Mich. 1637 Book Tower Woodward 3-3435	Boston 16, Mass. Statler Hotel 22 Providence Street Hancock 6-1341

OR YOUR LOCAL TRAVEL AGENT

JOHN KEEN CO.
1700 WALNUT ST., PHILA 3, PA.

Printed in U.S.A. by Jack Dronski Printing, N.Y.C.



Beachcombing
IN THE

BAHAMAS

Winter Season 1953

BY AIR WITH
BAHAMAS AIRWAYS
LIMITED

(A SUBSIDIARY OF B.O.A.C.)

OAKES FIELD NASSAU, BAHAMAS

Telephone 2262

Effective JANUARY 16, 1953

Beachcombing in GOVERNOR'S HARBOUR *Beachcombing* in HARBOUR ISLAND



"Freedom" is the catchword in this carefree Eleutheran beauty spot. First settled in 1648 by a group from London who called themselves the Eleutheran Adventurers, they named the island after themselves and the Greek word "Eleutheros" meaning "free," and established at Governor's Harbour the capital of what is believed to be the first Republic of the New World. Later, schooners from New England and Baltimore clippers from Chesapeake Bay, loading and unloading cargoes, anchored in the bay on the west coast where your amphibian will land. Once ashore you will be driven — or you may walk — across the Island to French Leave, a modern guest house with an excellent cuisine, situated on a mile long beach, where you will enjoy your freedom to bathe and beachcomb at your leisure. Or you may lunch at the Buccaneer Club recently opened by the author Hellweg-Larsen.

*For scheduled services see timetable
For rates see back page*

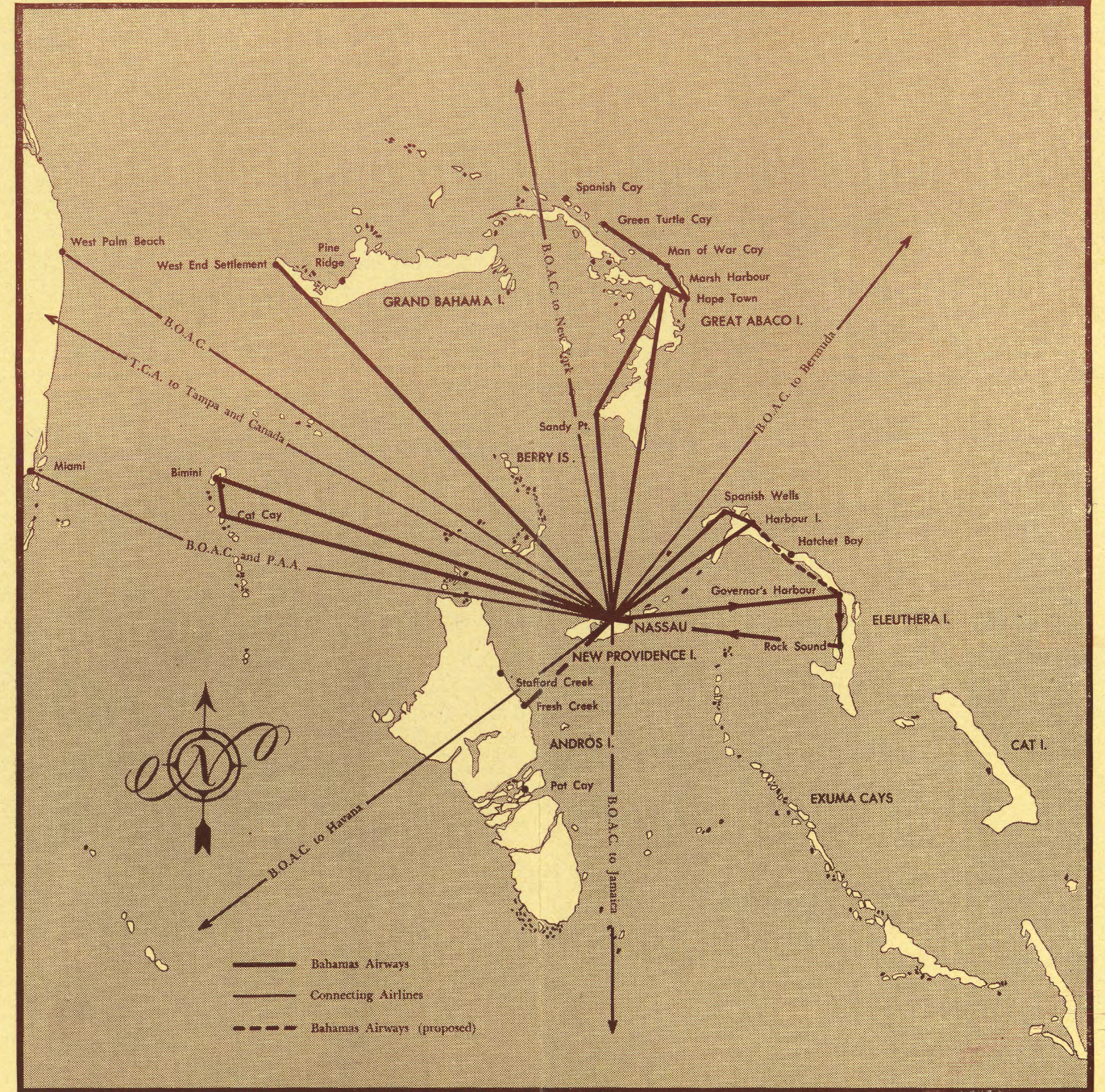
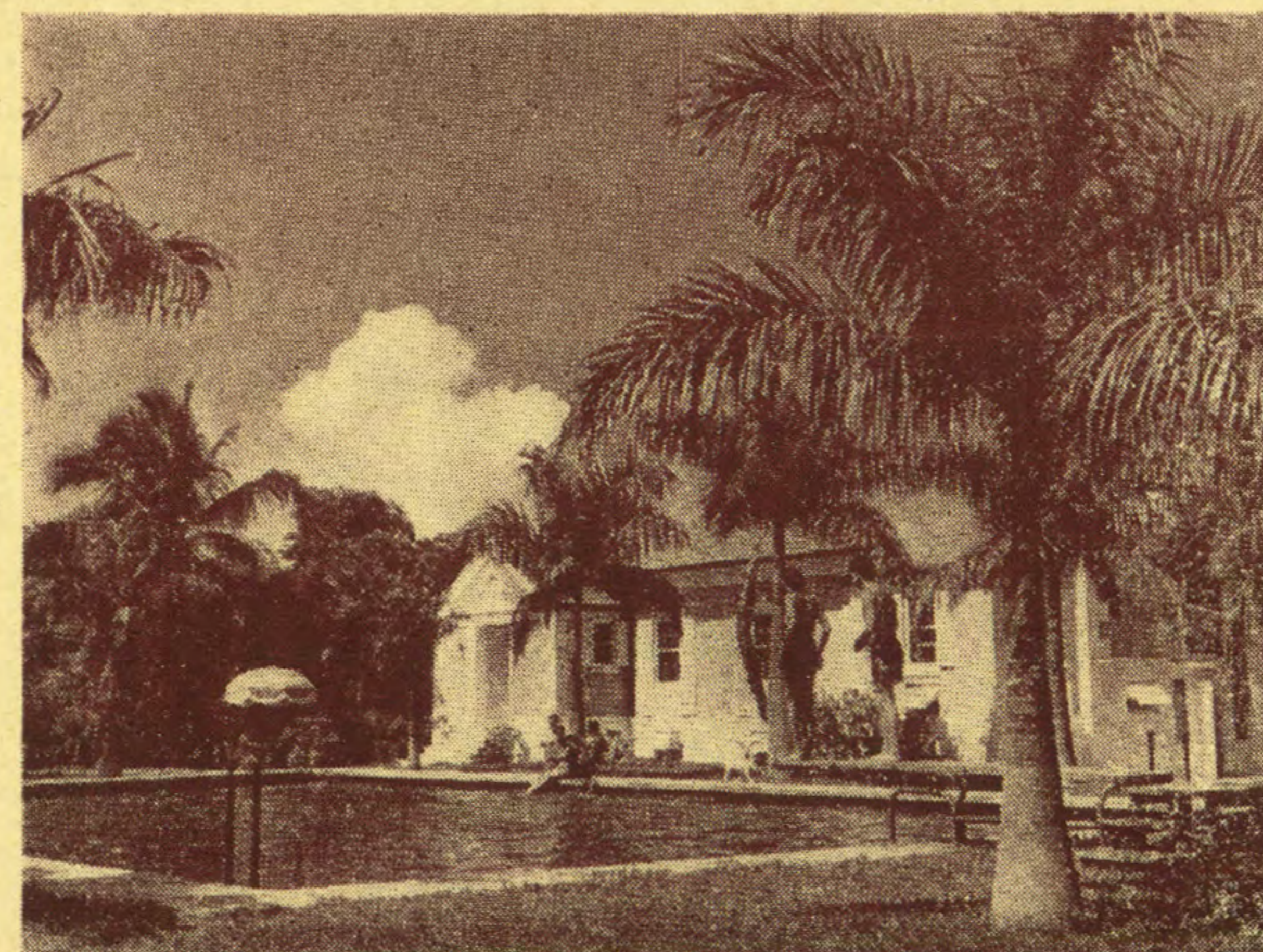
Beachcombing in ROCK SOUND

"Wreck Sound" as it was previously known, is said to have obtained its name in the days of the pirates, because of the nefarious occupation of its one-time inhabitants of wrecking vessels. Today, Rock Sound presents a very different picture with its peace-loving and law-abiding citizens. Here you will land on the only airstrip in Eleuthera, the property of the Rock Sound Farm which was purchased in 1950 by the British Government's Colonial Development Corporation from the American aluminum millionaire, Mr. A. V. Davis. In the heart of the farm area is the Rock Sound Club, where you will lunch. You can bathe in the Club pool, or on any of the three adjacent beaches, or you may play tennis on the club courts, beachcombing in a modern setting.

*For scheduled services see timetable
For rates see back page*

This enchanting spot, off the northern shore of Eleuthera, has one of the most picturesque settlements in the Outer Islands. Dunmore Town is named after Lord Dunmore, Governor of the Bahamas from 1786 to 1797, previously the last Royal Governor of the States of New York and Virginia. Your amphibian will land in one of the finest harbours in the Bahamas, on the west side of the Island, and once ashore, it is but a short walk to the glorious mile long "pink" sands beach. You may then lunch at the Pink Sands Lodge or at Picaroon Cove. When not eating you can bathe on the almost deserted beach, you can wander through the town, or you can hire a boat and go fishing. But do not become so enchanted that you miss your flight home to Nassau into the setting sun.

*For scheduled services see timetable
For rates see back page*



BAHAMAS AIRWAYS LIMITED
serves the above routes by scheduled and
charter flights. For further details see back page.