



Beachcombing
IN THE
BAHAMAS

Summer Season

1954

BY AIR WITH
BAHAMAS AIRWAYS



LIMITED



(A SUBSIDIARY OF B.O.A.C.)

OAKES FIELD NASSAU, BAHAMAS

Telephone 2262

Effective April 16, 1954

SUMMER SCHEDULES COMMENCING 16th APRIL 1954

NASSAU — ABACO — GRAND BAHAMA — EXUMA — LONG ISLAND

	BH41	BH27	BH9	BH23		BH24	BH10	BH28	BH42
	Sat. †	Wed. Sat.	Sun. AM	Mon. Thu. Fri. AM		Mon. Thu. Fri. PM	Sun. PM	Wed. Sat. PM	Sat. † PM
NAS	8.30	10.30	10.30	10.30	Lv. NASSAU	Ar. 13.45	5.00	13.20	5.00
SPT				11.00	F Ar. SANDY POINT	Lv. F	4.30		
CKE				11.15	F Ar. CHEROKEE SOUND	Lv. F	4.15		
MHB				11.30	11.15 Ar. MARSH HARBOUR	Lv. 13.00	4.00		
HTN				11.45	11.30 Ar. HOPE TOWN	Lv. 12.50	3.45		
MOW				12.00	11.45 Ar. MAN-O-WAR CAY	Lv. 12.40	3.30		
GTC		↓		12.30	12.00 Ar. GREEN TURTLE CAY	Lv. 12.15	3.00		
PRG		11.30			Ar. PINE RIDGE, G.B.	Lv.			
WEG	↓	12.00			Ar. WEST END, G.B.	Lv.		12.15	
GTN	9.30				Ar. GEORGE TOWN	Lv.			4.00
SIM	10.00				Ar. SIMMS, L. I.	Lv.			3.30
CLN	10.30				Ar. CLARENCE TOWN	Lv.			3.00

† BH 41 every alternate Saturday.
‡ BH 42 every alternate Saturday.

NASSAU — FRESH CREEK — MANGROVE CAY — POT CAY

	BH35	BH33	BH29		BH30	BH34	BH36
	Thu. AM	Mon. Wed. Fri. PM	Mon. Wed. Fri. AM		Mon. Wed. Fri. AM	Mon. Wed. Fri. PM	Thu. AM
NAS	7.30	4.15	10.15	Lv. NASSAU	Ar. 11.05	5.05	8.45
FCK	↓	4.35	10.35	Ar. FRESH CREEK	Lv. 10.45	4.45	▲
MGC	8.00			Ar. MANGROVE CAY	Lv.		8.15
POT	F			Ar. POT CAY	Lv.		F

NASSAU — BIMINI — CAT CAY — CONCH SOUND

	BH25	BH37		BH38	BH26
	Tue. AM	Mon. AM		Mon. AM	Tue. PM
NAS	9.45	7.30	Lv. NASSAU	Ar. 8.20	3.00
CSD	↓	7.50	Ar. CONCH SOUND	Lv. 8.00	↑
STC	↓	F	Ar. STAFFORD CREEK	Lv. F	↑
CCY	F		CAT CAY		F
BIM	10.45		Ar. BIMINI	Lv.	2.00

F. Flag Stop

SUMMER SCHEDULES COMMENCING 16th APRIL 1954

NASSAU — SPANISH WELLS — HARBOUR ISLAND — GOVERNOR'S HARBOUR — ROCK SOUND

	BH17	BH31	BH15*	BH21		BH22	BH16*	BH32	BH18
	Sun. Tue. Thu. Sat. PM	Sun. Tue. Thu. Sat. AM	Sun. Mon. Wed. Fri. PM	Sun. Mon. Wed. Fri. AM		Sun. Mon. Wed. Fri. AM	Sun. Mon. Wed. Fri. PM	Sun. Tue. Thu. Sat. AM	Sun. Tue. Thu. Sat. PM
NAS	2.00	8.15	2.30	8.30	Lv. NASSAU	Ar. 9.45	3.45	10.05	3.50
SPW	↓	↓	F	F	SPANISH WELLS	F	F	↑	↑
HBI	↓	↓	3.00	9.00	Ar. HARBOUR ISLAND	Lv. 9.15	3.15		
GHB	2.35	8.50			Ar. GOVERNOR'S HARBOUR				
GHB	2.45	9.00			Lv. GOVERNOR'S HARBOUR				
RSD	3.00	9.15			Ar. ROCK SOUND	Lv.		9.25	3.10

* If stop is made at Spanish Wells then arrival time will be fifteen minutes later.

INTER ISLAND FARES

	STERLING		DOLLARS			STERLING		DOLLARS	
	One Way	Round Trip	One Way	Round Trip		One Way	Round Trip	One Way	Round Trip
FROM NASSAU TO					FROM BIMINI TO				
Bimini	£5.10. 0	£10. 0. 0	\$15.40	\$28.00	Cat Cay	1. 8. 0	2.10. 0	3.90	7.00
Cat Cay	5. 3. 0	9. 6. 0	14.50	26.00	FROM HOPETOWN TO				
Cherokee Sound	4.10. 0	8. 2. 0	12.60	22.70	Marsh Harbour	14. 0	1. 6. 0	2.00	3.70
Clarence Town	6.10. 0	11.14. 0	18.20	32.80	Man-O-War Cay	14. 0	1. 6. 0	2.00	3.70
Conch Sound	2.15. 0	5. 0. 0	7.70	14.00	Sandy Point	1. 8. 0	2.10. 0	3.90	7.00
Fresh Creek	2.15. 0	5. 0. 0	7.70	14.00	Cherokee Sound	1. 8. 0	2.10. 0	3.90	7.00
George Town	5.10. 0	10. 0. 0	15.40	28.00	FROM MARSH HARBOUR TO				
Governor's Harbour	3.17. 0	6.19. 0	10.80	19.50	Man-O-War Cay	14. 0	1. 6. 0	2.00	3.70
Green Turtle Cay	4.17. 0	8.15. 0	13.60	24.50	Sandy Point	1. 8. 0	2.10. 0	3.90	7.00
Harbour Island	2.15. 0	5. 0. 0	7.70	14.00	Cherokee Sound	1. 8. 0	2.10. 0	3.90	7.00
Hope Town	4.10. 0	8. 2. 0	12.60	22.70	FROM MAN-O-WAR CAY TO				
Mangrove Cay	2.15. 0	5. 0. 0	7.70	14.00	Sandy Point	1. 8. 0	2.10. 0	3.90	7.00
Marsh Harbour	4.10. 0	8. 2. 0	12.60	22.70	Cherokee Sound	1. 8. 0	2.10. 0	3.90	7.00
Man-O-War Cay	4.10. 0	8. 2. 0	12.60	22.70	FROM GREEN TURTLE CAY TO				
Pine Ridge	5. 3. 0	9. 6. 0	14.50	26.00	Hopetown	1. 8. 0	2.10. 0	3.90	7.00
Pot Cay	3.15. 0	6.15. 0	10.50	18.90	Marsh Harbour	1. 8. 0	2.10. 0	3.90	7.00
Rock Sound	3.17. 0	6.19. 0	10.80	19.50	Man-O-War Cay	1. 8. 0	2.10. 0	3.90	7.00
Sandy Point	3.15. 0	6.15. 0	10.50	18.90	Sandy Point	2. 9. 0	4. 8. 0	6.90	12.30
Simms'	6.10. 0	11.14. 0	18.20	32.80	Cherokee Sound	2. 9. 0	4. 8. 0	6.90	12.30
Spanish Wells	2.15. 0	5. 0. 0	7.70	14.00	FROM GOVERNOR'S HARBOUR TO				
West End, Grand Bahama	5. 3. 0	9. 6. 0	14.50	26.00	Rock Sound	1. 2. 0	2. 0. 0	3.10	5.60
FROM SPANISH WELLS TO									
Harbour Island	14. 0	1. 6. 0	2.00	3.70					

CHARTER RATES

Standard rates for the Company's fleet of Amphibious Aircraft are —

For 7 seater Goose aircraft.....£35. 0. 0 or \$98.00 per hour
For 4 seater Widgeon aircraft.....£25. 0. 0 or \$70.00 per hour

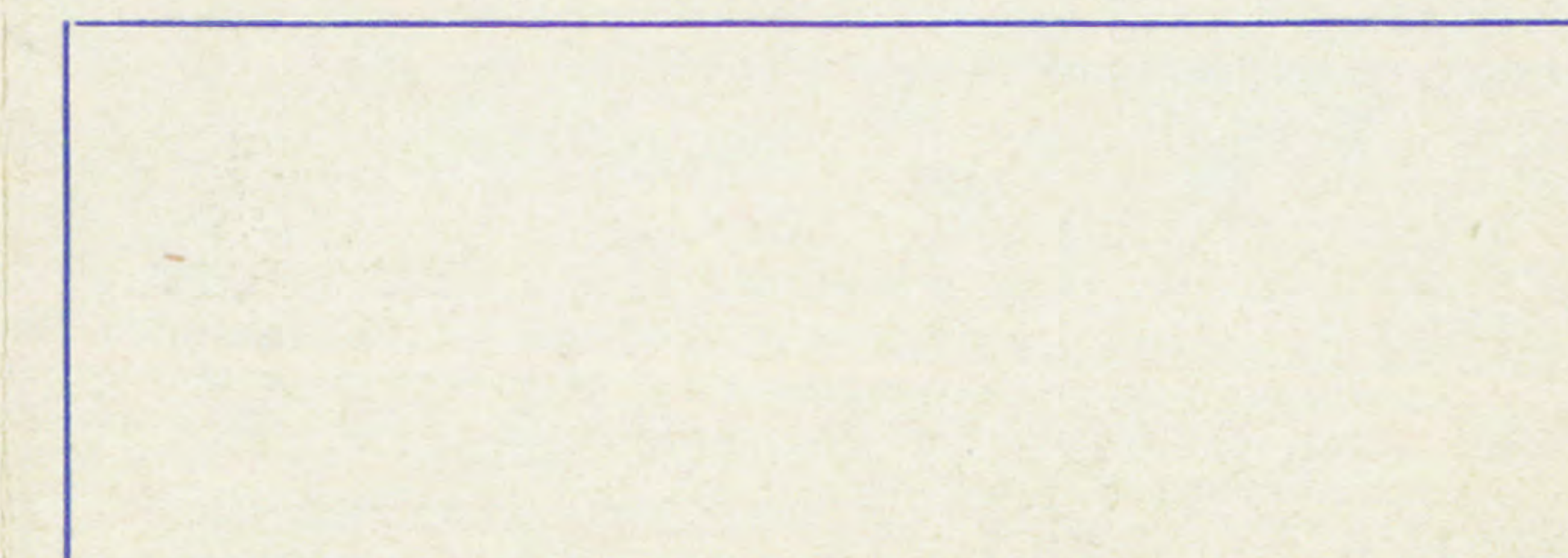


For further particulars of Beachcombing tours and B.A.L. apply to any of the undermentioned.

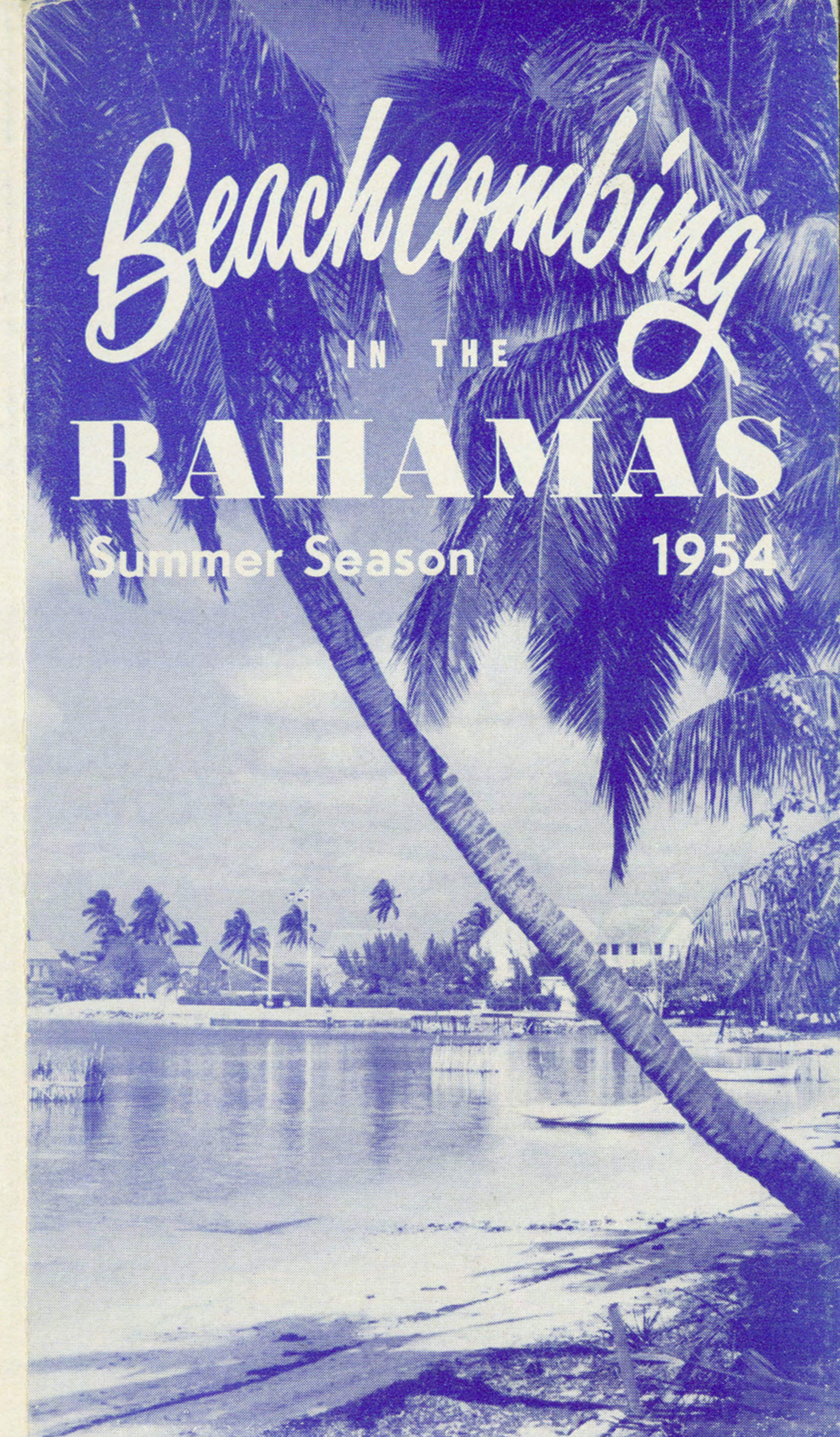
OFFICES OF BRITISH OVERSEAS AIRWAYS CORPORATION

New York 17, N. Y. 342 Madison Avenue MUrray Hill 7-8900	Toronto, Ont. 32 King Street Empire 3-4323
Washington 6, D.C. 1124 Connecticut Ave., N.W. Executive 3-3944	Detroit 26, Mich. 1637 Book Tower Woodward 3-3435
Montreal, Que. Laurentien Hotel University 6-5861	Los Angeles 14, Calif. 530 West Sixth Street Vandike 8176
Miami 32, Fla. 312 N. E. 1st Street 82-8693	San Francisco 8, Calif. 455 Post Street Garfield 1-8600
Chicago 3, Ill. 37 South Wabash Avenue Franklin 2-3987	Nassau, Bahamas Eastbourne House Tel. 2262
Dallas 1, Texas 312 Cotton Exch. Bldg. Riverside 4803-4	Boston 16, Mass. 22 Providence Street Hancock 6-1341

OR YOUR LOCAL TRAVEL AGENT

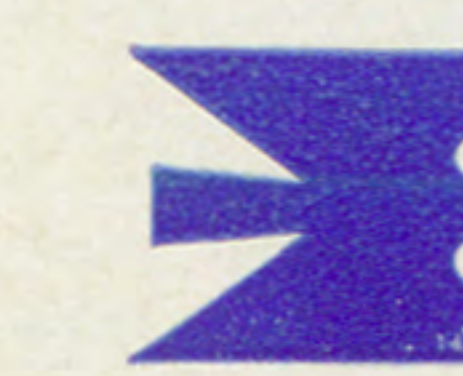


Beachcombing
IN THE
BAHAMAS
Summer Season 1954



BY AIR WITH

BAHAMAS AIRWAYS



LIMITED



(A SUBSIDIARY OF B.O.A.C.)

OAKES FIELD NASSAU, BAHAMAS

Telephone 2262

Effective April 16, 1954



Beachcombing in GOVERNOR'S HARBOUR

"Freedom" is the catchword in this carefree Eleutheran beauty spot. First settled in 1648 by a group from London who called themselves the Eleutheran Adventurers, they named the island after themselves and the Greek word "Eleutheros" meaning "free," and established at Governor's Harbour the capital of what is believed to be the first Republic of the New World. Later, schooners from New England and Baltimore clippers from Chesapeake Bay, loading and unloading cargoes, anchored in the bay on the west coast where your amphibian will land. Once ashore you will be driven — or you may walk — across the Island to French Leave, a modern guest house with an excellent cuisine, situated on a mile long beach, where you will enjoy your freedom to bathe and beachcomb at your leisure. Or you may lunch at the Buccaneer Club recently opened by the author Hellweg-Larsen.

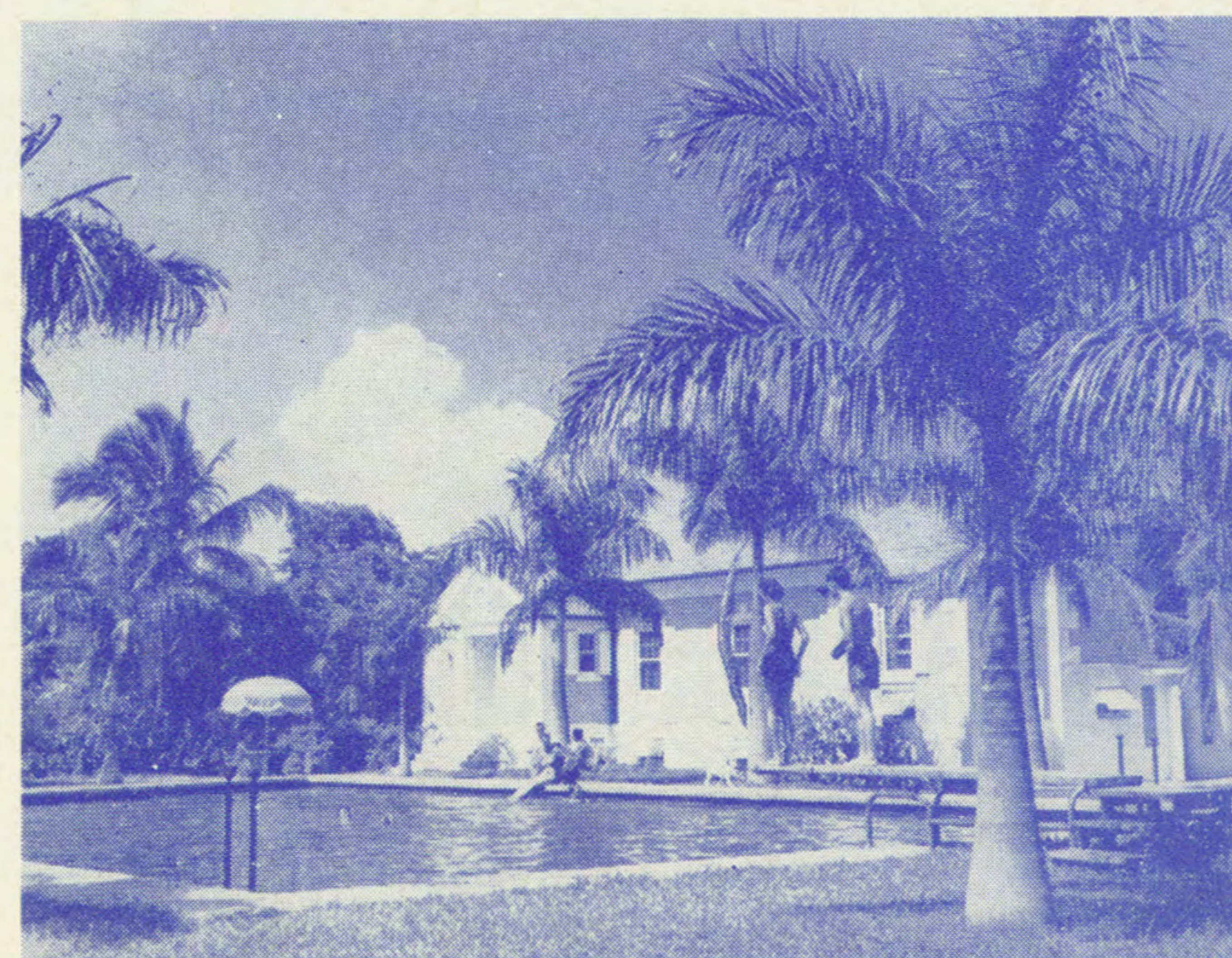
For scheduled services see time table
For rates see back page



Beachcombing in HARBOUR ISLAND

This enchanting spot, off the northern shore of Eleuthera, has one of the most picturesque settlements in the Outer Islands. Dunmore Town is named after Lord Dunmore, Governor of the Bahamas from 1786 to 1797, previously the last Royal Governor of the States of New York and Virginia. Your amphibian will land in one of the finest harbours in the Bahamas, on the west side of the Island, and once ashore, it is but a short walk to the glorious mile long "pink" sands beach. You may then lunch at the Pink Sands Lodge or at Picaroon Cove. When not eating you can bathe on the almost deserted beach, you can wander through the town, or you can hire a boat and go fishing. But do not become so enchanted that you miss your flight home to Nassau into the setting sun.

For scheduled services see time table
For rates see back page



Beachcombing in ROCK SOUND

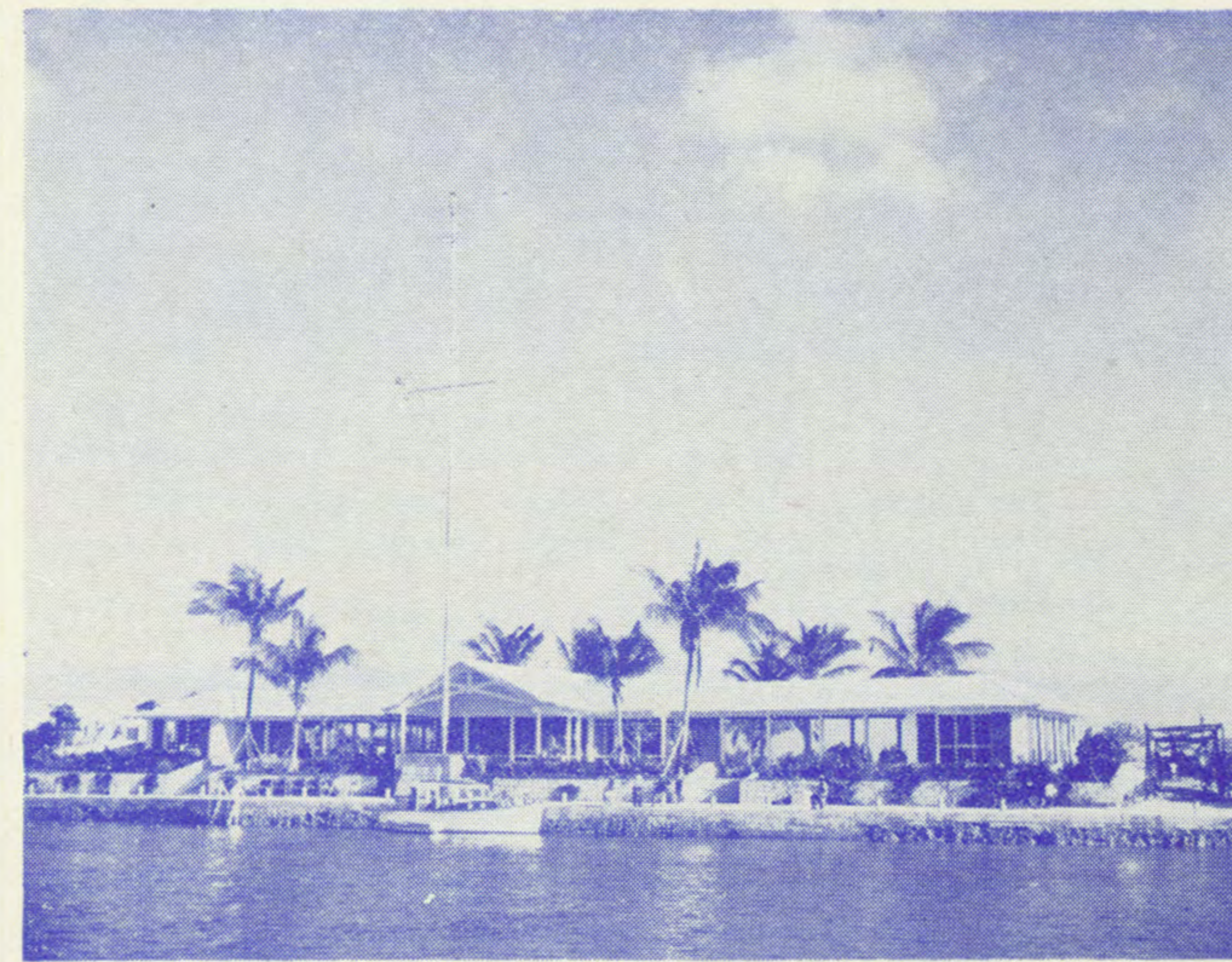
"Wreck Sound" as it was previously known, is said to have obtained its name in the days of the pirates, because of the nefarious occupation of its one-time inhabitants of wrecking vessels. Today, Rock Sound presents a very different picture with its peace-loving and law-abiding citizens. Here you will land on the only airstrip in Eleuthera, the property of the Rock Sound Farm which was purchased in 1950 by the British Government's Colonial Development Corporation from the American aluminum millionaire, Mr. A. V. Davis. In the heart of the farm area is the Rock Sound Club, where you will lunch. You can bathe in the Club pool, or on any of the three adjacent beaches, or you may play tennis on the club courts, beachcombing in a modern setting.

For scheduled services see time table
For rates see back page

Beachcombing in FRESH CREEK

Fresh Creek — This multi-millionaire dollar yachting, resort and real estate development center was opened for the first time this year at Fresh Creek, Andros, 40 miles southwest of Nassau. This project which is being developed over a period of years will eventually offer a "city in itself" with stores and shops of many types. Shown here is the reception center. The Yacht Club, which will have accommodations for visitors, will be opened on the 5th December 1953. Bahamas Airways operate two flights daily from 1st January, 1954.

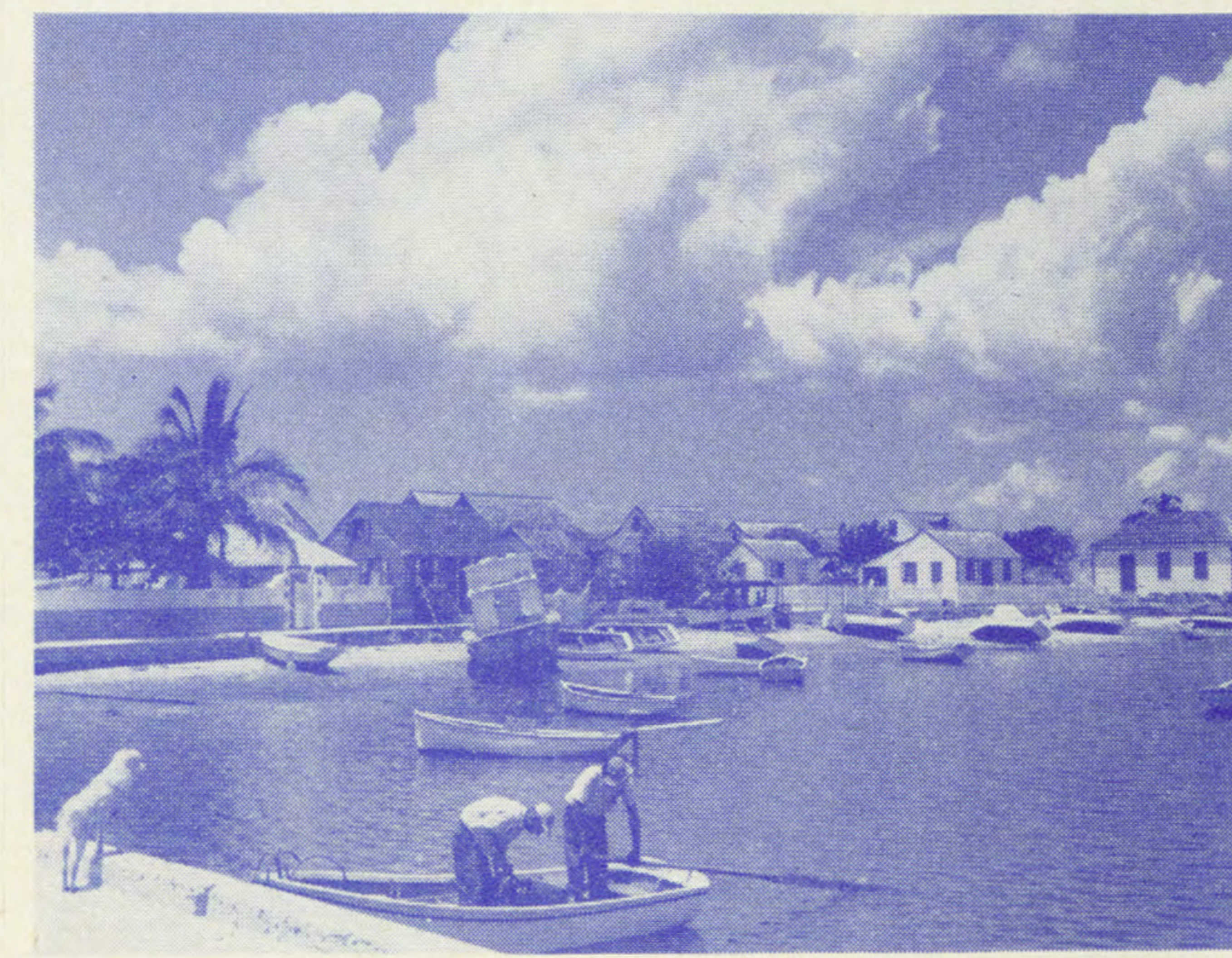
For scheduled services see time table
For rates see back page



Beachcombing in GREEN TURTLE BAY

Green Turtle Cay — One of the largest and most beautiful settlements in the Abaco group. Green Turtle Cay is situated in a fine salt-water fishing area. One commercial resort is already in operation in Green Turtle Cay, and visitors may also obtain accommodations in private homes. The community was originally settled by Loyalists from New York and Florida, whose direct descendants now inhabit the settlement. This is now one of the most progressive cays of the Bahamas. Bahamas Airways maintains a service of four flights per week from Nassau.

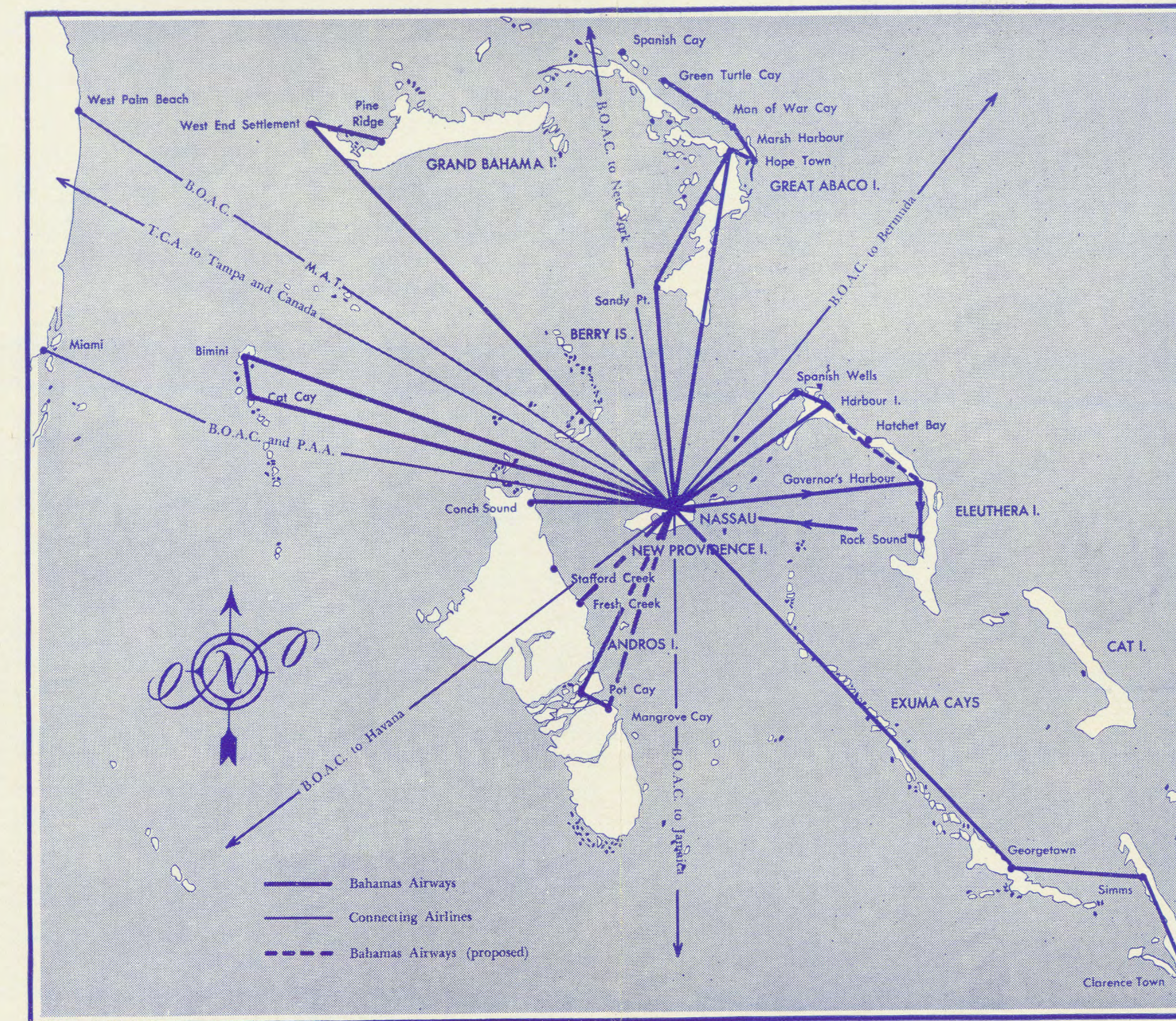
For scheduled services see time table
For rates see back page



Beachcombing in BIMINI

Bimini — Often called the big game fishing capital of the world, Bimini offers the utmost for anglers and vacationers. The island, located on the edge of the Gulf Stream, 50 miles east of Miami, offers excellent accommodations, nightlife and even a motion picture theatre. Two of its greatest attractions, besides its sports fishing are the Lerner Marine Aquarium, which exhibits dozens of varieties of tropical fishes, and the Lerner Marine Laboratory where visiting scientists study the habits of ocean life. Bahamas Airways operates two flights weekly from Nassau and charter flights from Miami and Palm Beach are available at any time.

For scheduled services see time table
For rates see back page



BAHAMAS AIRWAYS LIMITED
serves the above routes by scheduled and
charter flights. For further details see back page.