



For further particulars of Beachcombing tours
and B.A.L. apply to any of the undermentioned.

OFFICES OF BRITISH OVERSEAS AIRWAYS CORPORATION

NEW YORK 17, N. Y.
342 Madison Avenue
Murray Hill 7-8900

DALLAS 2, TEXAS
2020 Adolphus Tower
Riverside 4803-4

MIAMI 32, FLORIDA
312 N. E. 1st Street
82-8693

WASHINGTON 6, D.C.
1124 Connecticut Ave., N.W.
Executive 3-3944

BOSTON 16, MASS.
76 Arlington St.
Hancock 6-1341

DETROIT 26, MICH.
2112 Book Tower
Woodward 3-3435

PHILADELPHIA 2, PA.
3 Penn Center Plaza
Locust 8-2545

CHICAGO 2, ILL.
69 East Madison Street
Andover 3-0222

LOS ANGELES 14, CALIF.
530 West Sixth Street
Vandike 8176

SAN FRANCISCO 2, CALIF.
455 Post Street
Garfield 1-8600

MONTREAL, QUEBEC
Laurentien Hotel
University 6-5861

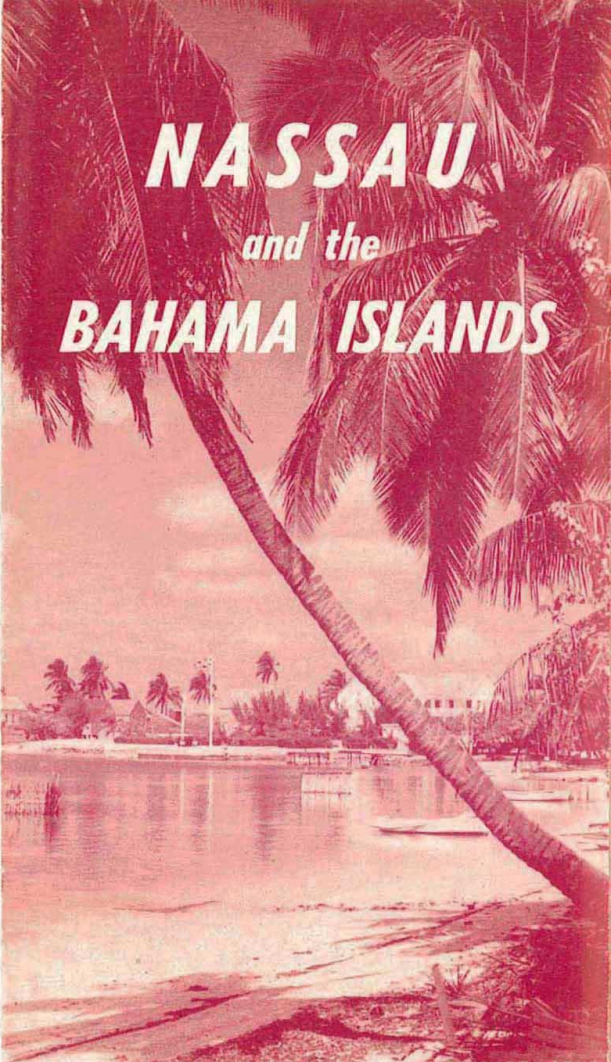
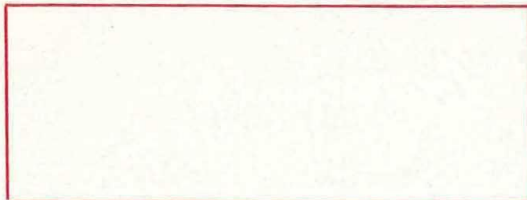
WINNIPEG, MANITOBA
203-204 Childs Bldg.
211 Portage Avenue
92-2191

TORONTO, ONTARIO
32 King Street
Empire 3-4323

VANCOUVER 1, B.C.
779 Burrard Street
Tatlow 8277

NASSAU, BAHAMAS
Boyle Bldg.
Tel. 2262

OR YOUR LOCAL TRAVEL AGENT



NASSAU
and the
BAHAMA ISLANDS

WINTER SEASON — 1956 EFFECTIVE JAN. 15, 1956

BY AIR WITH
BAHAMAS AIRWAYS



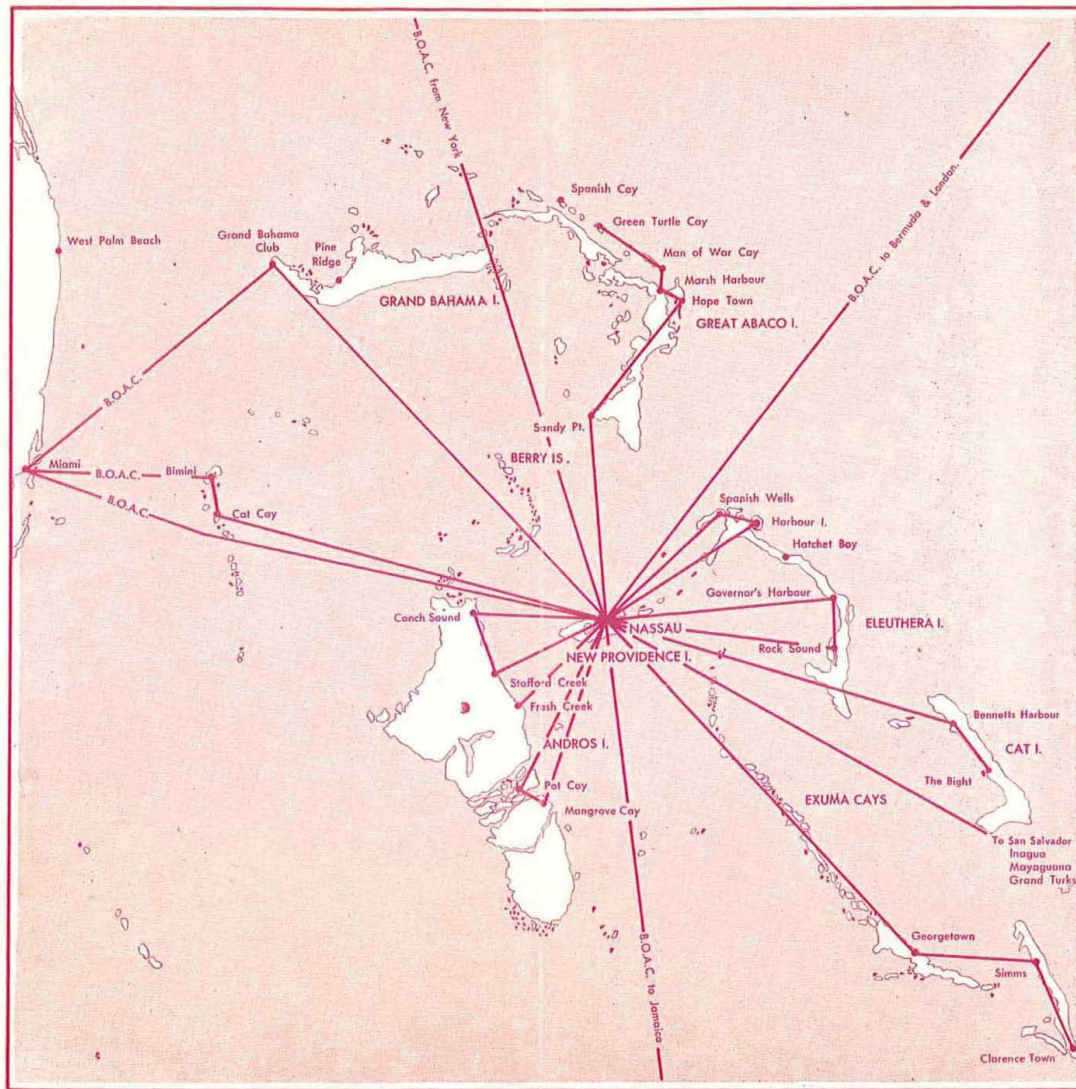
LIMITED



(ASSOCIATED COMPANY OF B.O.A.C.)

OAKES FIELD NASSAU, BAHAMAS

Telephone 2262



BAHAMAS AIRWAYS LIMITED
serves the above routes by scheduled and
charter flights. For further detail see inside page.



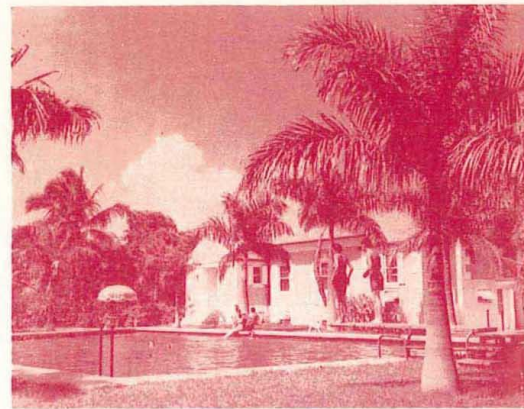
Beachcombing in GOVERNOR'S HARBOUR

"Freedom" is the catchword in this carefree Eleutheran beauty spot. First settled in 1648 by a group from London who called themselves the Eleutheran Adventurers, they named the island after themselves and the Greek word "Eleutheros" meaning "free", and established at Governor's Harbour the capital of what is believed to be the first Republic of the New World. Later, schooners from New England and Baltimore clippers from Chesapeake Bay, loading and unloading cargoes, anchored in the bay on the west coast. Upon landing, you will be driven across the Island to French Leave, a modern guest house with an excellent cuisine, situated on a mile long beach, where you will enjoy your freedom to bathe and beachcomb at your leisure. Or you may lunch at the Buccaneer Club.



Beachcombing in HARBOUR ISLAND

This enchanting spot, off the northern shore of Eleuthera, has one of the most picturesque settlements in the Outer Islands. Dunmore Town is named after Lord Dunmore, Governor of the Bahamas from 1786 to 1797, previously the last Royal Governor of the States of New York and Virginia. Your amphibian will land in one of the finest harbours in the Bahamas, on the west side of the Island, and once ashore, it is but a short walk to the glorious mile long, "pink" sands beach. You may then lunch at the Pink Sands Lodge or at Picaroon Cove. After lunch you can bathe on the almost deserted beach, you can wander through the town, or you can hire a boat and go fishing. But do not become so enchanted that you miss your flight home to Nassau into the setting sun.



Beachcombing in ROCK SOUND

"Wreck Sound", as it was previously known, is said to have obtained its name in the days of the pirates because of the nefarious occupation of its one-time inhabitants of wrecking vessels. Today, Rock Sound presents a very different picture with its peace-loving and law-abiding citizens. Here you will land on an airstrip in Eleuthera. In the heart of the farm area is the Rock Sound Club, where you will lunch. You can bathe in the Club pool, or on any of the three adjacent beaches, play tennis on the club courts, or play golf on the 18-hole golf course, beachcombing in a modern setting.

Beachcombing in ANDROS TOWN

Andros Town — This multi-million dollar yachting resort and real estate development center was opened for the first time in 1952 at Fresh Creek, Andros, 40 miles southwest of Nassau. This project which is being developed over a period of years will eventually offer a "city in itself" with stores and shops of many types. Shown here is the yacht center. Excellent bone fishing at Pot Cay, Andros.



Beachcombing in GREEN TURTLE CAY

Green Turtle Cay — One of the largest and most beautiful settlements in the Abaco group. Green Turtle Cay is situated in a fine salt-water fishing area. One commercial resort is already in operation in Green Turtle Cay, and visitors may also obtain accommodations in private homes. The community was originally settled by Loyalists from New York and Florida, whose direct descendants now inhabit the settlement. This is now one of the most progressive cays of the Bahamas.



Beachcombing in BIMINI

Bimini — Often called the big game fishing capital of the world, Bimini offers the utmost for anglers and vacationers. The island, located on the edge of the Gulf Stream, 50 miles east of Miami, offers excellent accommodations, nightlife and even a motion picture theatre. Two of its greatest attractions, besides its sports fishing, are the Lerner Marine Aquarium, which exhibits dozens of varieties of tropical fish and the Lerner Marine Laboratory where visiting scientists study the habits of ocean life.



**NASSAU — ABACO — EXUMA — LONG ISLAND — CAT ISLAND
SAN SALVADOR — MAYAGUANA — INAGUA — TURKS ISLAND**

	BH53	BH51	BH41	BH23			BH24	BH42	BH52	BH54	
	TUE. ↓ AM	ALT. SAT. * AM	ALT. SAT. ‡ AM	DAILY AM			DAILY PM	ALT. SAT. ‡ PM	ALT. SAT. * PM	TUE. ↓ PM	
NAS	8.00	8.30	8.30	10.30	LV	NASSAU	AR	1.45	3.30	3.30	4.30
SNP				F		SANDY POINT	F	↑	↑	↑	
CKS				F		CHEROKEE SOUND	F	↑	↑	↑	
MHB				11.15	AR	MARSH HARBOUR	LV	1.00			
HTN				11.30	AR	HOPE TOWN	LV	12.45			
MOW				11.45	AR	MAN-O-WAR CAY	LV	12.30			
GTC			↓	12.00	AR	GREEN TURTLE CAY	LV	12.15			
GTN			9.35		AR	GEORGE TOWN	LV		2.25		
SIM			10.00		AR	SIMMS	LV		2.00		
CLN		↓	10.30		AR	CLARENCE TOWN	LV		1.30		
BHR		9.30			AR	BENNETTS HARBOUR	LV			2.30	
BGT	↓	10.00			AR	THE BIGHT	LV			2.00	
SAL	9.15				AR	SAN SALVADOR	LV				3.15
MAG	F					MAYAGUANA					F
ING	10.30				AR	INAGUA	LV				2.00
TKI	11.45				AR	TURKS ISLAND	LV				1.00

‡ SUBJECT TO GOVERNMENT APPROVAL
‡ BH41/42 OPERATES ALTERNATE SATURDAYS, JAN. 21st, ETC.
* BH51/52 OPERATES ALTERNATE SATURDAYS, JAN. 28th, ETC.
F FLAG STOP

MIAMI — GRAND BAHAMA — NASSAU

	BH28	BA678	FOUR ENGINE HERON		BA677	BH27	
	MON. WED. FRI. SAT. AM	DAILY AM			DAILY PM	MON. WED. FRI. SAT. PM	
MIA		8.30	LV	MIAMI	AR	5.10	
GBI		9.10	AR	GRAND BAHAMA	LV	4.30	
GBI		9.30	LV	GRAND BAHAMA	AR	3.50	
NAS		10.20	AR	NASSAU	LV	3.00	

All International flights operated under charter to BOAC

Light face type AM times
Bold face type PM times

MIAMI — BIMINI — CAT CAY — NASSAU

	BH25	BA666			BA665	BH26
	SUN. TUE. THU. SAT. PM	DAILY AM			DAILY PM	SUN. TUE. THU. SAT. AM
NAS	2.00		LV	NASSAU	AR	11.30
MIA	↓	9.00	LV	MIAMI	AR	4.30
CCY	↓	↓	F	CAT CAY	F	↑
BIM	3.00	9.30	AR	BIMINI	LV	4.00
						10.30

F — FLAG STOP

**NASSAU — HARBOUR ISLAND — SPANISH WELLS
GOVERNORS HARBOUR — ROCK SOUND**

	HERON		GRUMMAN GOOSE				GRUMMAN GOOSE			HERON			
	BH17	BH31	BH15	BH19	BH21		BH22	BH20	BH16	BH32	BH18		
	DAILY EXCEPT TUES. PM	DAILY EXCEPT TUES. AM	DAILY PM	DAILY PM	DAILY AM		DAILY AM	DAILY PM	DAILY PM	DAILY EXCEPT TUES. AM	DAILY EXCEPT TUES. PM		
NAS	3.45	8.00	4.00	2.00	8.15	LV	NASSAU	AR	9.30	3.15	5.15	9.30	5.15
SPW	↓	↓	F	↓	F		SPANISH WELLS		F	↑	F	↑	↑
HBI	↓	↓	4.30	2.30	8.45	AR	HARBOUR ISLAND	LV	9.00	2.45	4.45	↑	↑
GHB	4.15	8.30				AR	GOVERNOR HARBOUR					↑	↑
GHB	4.25	8.40				LV	GOVERNORS HARBOUR					↑	↑
RSD	4.35	8.50				AR	ROCK SOUND	LV				9.00	4.45

**NASSAU — ANDROS TOWN — CONCH SOUND
STAFFORD CREEK — POT CAY — MANGROVE CAY**

	BH35	BH33	BH29			BH30	BH34	BH36	
	MON. WED. FRI. AM	DAILY PM	DAILY AM			DAILY AM	DAILY PM	MON. WED. FRI. AM	
NAS	10.00	4.15	9.00	LV	NASSAU	AR	9.50	5.05	11.30
STC	↓	↓	↓	F	STAFFORD CREEK	F	↑	↑	↑
CSD	↓	↓	↓	F	CONCH SOUND	F	↑	↑	↑
FCK	↓	4.35	9.20	AR	ANDROS TOWN	LV	9.30	4.45	↑
POT	↓			F	POT CAY	F			↑
MGC	10.30			AR	MANGROVE CAY	LV			11.00

INTER ISLAND FARES

FROM NASSAU TO	STERLING		DOLLARS	
	One Way	Round Trip	One Way	Round Trip
Bennetts Harbour	£ 5.10. 0	£10. 0. 0	\$15.40	\$28.00
Bimini	5.10. 0	10. 0. 0	15.40	28.00
Cat Cay	5.10. 0	10. 0. 0	15.40	28.00
Cherokee Sound	4.10. 0	8. 2. 0	12.60	22.70
Clarence Town	6.10. 0	11.14. 0	18.20	32.80
Conch Sound	2.15. 0	5. 0. 0	7.70	14.00
Fresh Creek	3. 6. 0	6. 0. 0	9.30	16.80
Grand Bahama	5.10. 0	10. 0. 0	15.40	28.00
George Town	5.10. 0	10. 0. 0	15.40	28.00
Governors Harbour	3.17. 0	6.19. 0	10.80	19.50
Green Turtle Cay	4.17. 0	8.15. 0	13.60	24.50
Harbour Island	3. 6. 0	6. 0. 0	9.30	16.80
Hope Town	4.10. 0	8. 2. 0	12.60	22.70
Inagua *	12.10. 0	22.10. 0	35.00	63.00
Mayaguana *	12.10. 0	22.10. 0	35.00	63.00
Mangrove Cay	2.15. 0	5. 0. 0	7.70	14.00
Marsh Harbour	4.10. 0	8. 2. 0	12.60	22.70
Man-O-War Cay	4.10. 0	8. 2. 0	12.60	22.70
Pot Cay	3. 6. 0	6. 0. 0	9.30	16.80
Rock Sound	3.17. 0	6.19. 0	10.80	19.50
Sandy Point	3.15. 0	6.15. 0	10.50	18.90
San Salvador	6.10. 0	11.14. 0	18.20	32.80
Simms'	6.10. 0	11.14. 0	18.20	32.80
Spanish Wells	3. 6. 0	6. 0. 0	9.30	16.80
Stafford Creek	3. 0. 0	6. 0. 0	8.40	16.80
Turks Island *	17.10. 0	31.10. 0	49.00	88.20
The Bight	5.10. 0	10. 0. 0	15.40	28.00

*Subject to Government Approval



Beachcombing in GRAND BAHAMA

At the attractive Grand Bahama, mecca for yachtsmen, fishermen, and fun lovers — where informality and relaxation are the rules of the day. A resort colony with complete recreational facilities. Among the finest bone and game fishing in the Bahamas. Bathing from private beaches or in the largest salt water swimming pool in the entire Caribbean area. Lounge bar, coffee shop, dining and dancing. All modern accommodations at moderate prices.

Gift shops featuring Bahamian and imported items . . . and remember, you may take back with you to the U.S. up to \$200.00 worth of merchandise free of duty if you have been away from the U.S. more than 48 hours. The spot for fun for a day, a week-end, or longer.

INTERNATIONAL FARES

FROM MIAMI TO	STERLING		DOLLARS	
	One Way	Round Trip	One Way	Round Trip
Bimini	£ 7. 3. 0	£12.18. 0	\$20.00	\$36.00
Cat Cay	7. 3. 0	12.18. 0	20.00	36.00
Grand Bahama	4. 6. 0	7.10. 0	12.00	21.00

CHARTER RATES

Standard rates for the Company's fleet of aircraft are:

For 14 seater Heron aircraft	£ 42.18. 0	or	\$120.00 per flying hr.
For 7 seater Goose aircraft	35. 0. 0	or	98.00 per flying hr.
For 4 seater Widgeon	25. 0. 0	or	70.00 per flying hr.

Passenger Information

Your Ticket & Conditions of Contract

Your ticket is issued subject to these regulations, and to our general conditions of carriage of passengers and baggage, extracts of which can be found in your ticket.

Baggage

Free baggage allowance is 40 lbs. on all services. Excess charges on international services operated under charter to B.O.A.C. are charged at the rate of 1% of the single fare per kilo.

Departure Time

It is essential to report to the departure terminal or airport no later than the time advised; this allows a minimum time to complete all formalities. Flights cannot be delayed for passengers arriving late, and we cannot accept responsibility in such cases.

Cancellations

Passengers who do not travel on the service for which they hold a reservation, and who have not cancelled in advance, are liable to a payment of a 'no-show' charge. Refund of fare for reservations cancelled or transferred at short notice cannot be guaranteed.

DE HAVILLAND HERON

This sleek four engined de Havilland Heron recently introduced on Bahamas Airways routes offers smooth, fast air transportation to, from and in the Bahamas. The Heron is specially suitable for charter parties up to 14 passengers.

