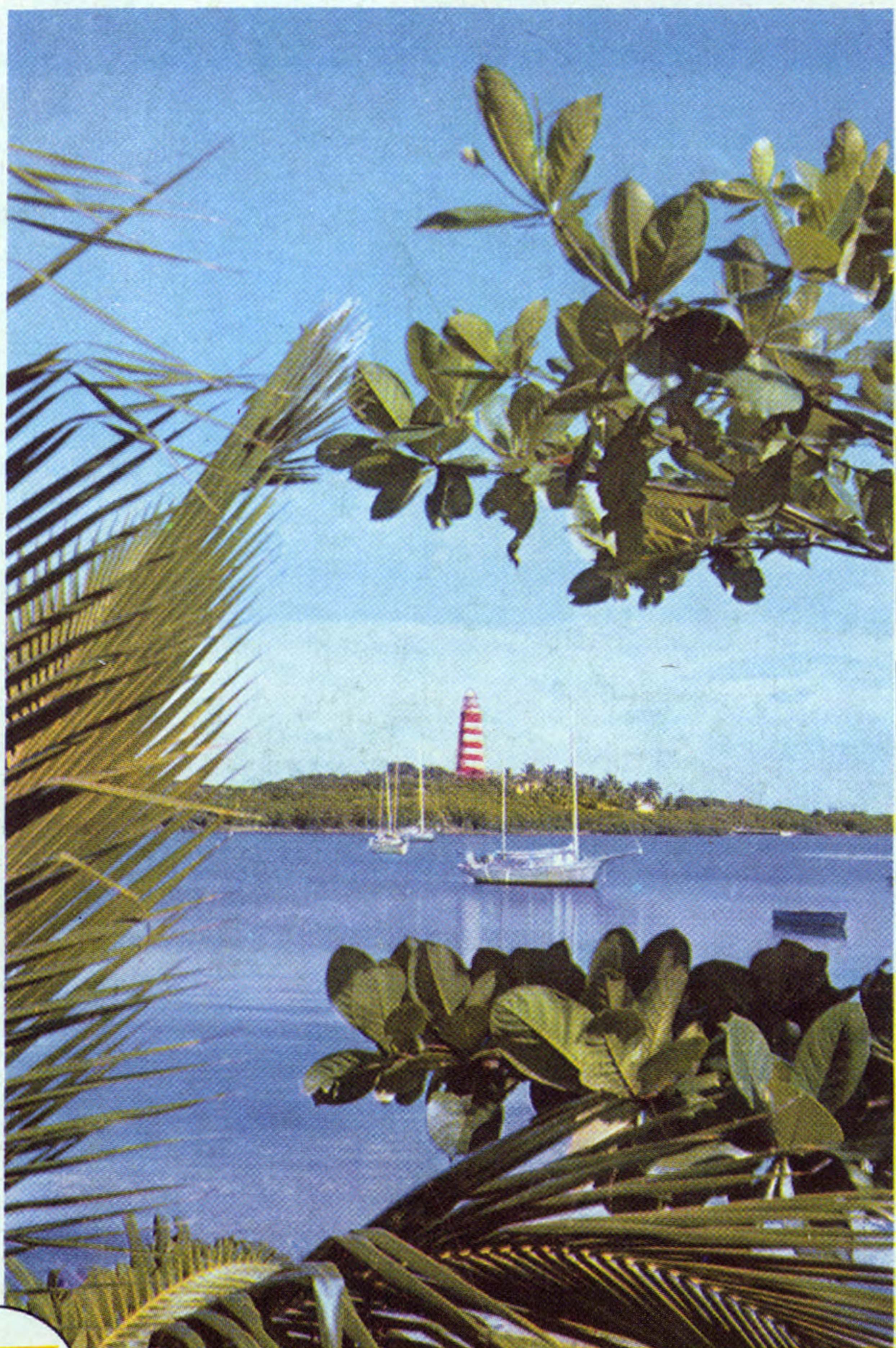


BAHAMAS AIRWAYS



SCHEDULED JULIES • 1961

The Airline of the Bahamas



Effective September 15th, 1961 (until further notice)

ASSOCIATE
OF BOAC

**NEW EXCURSIONS
HELP YOU DISCOVER
THE FASCINATING
OUT ISLANDS**

Conveniently...at low cost!

You've read about them in national magazines... heard glowing reports about them from your friends. Now, see the fascinating Out Islands for yourself via Bahamas Airways excursions!

Leaving from Miami, Ft. Lauderdale, West Palm Beach, or Nassau, Bahamas Airways will take you to such enchanting islands as Eleuthera, Abaco, Grand Bahama, Bimini, Andros, and the Exumas on one convenient pre-planned trip — at one low "package" fare!

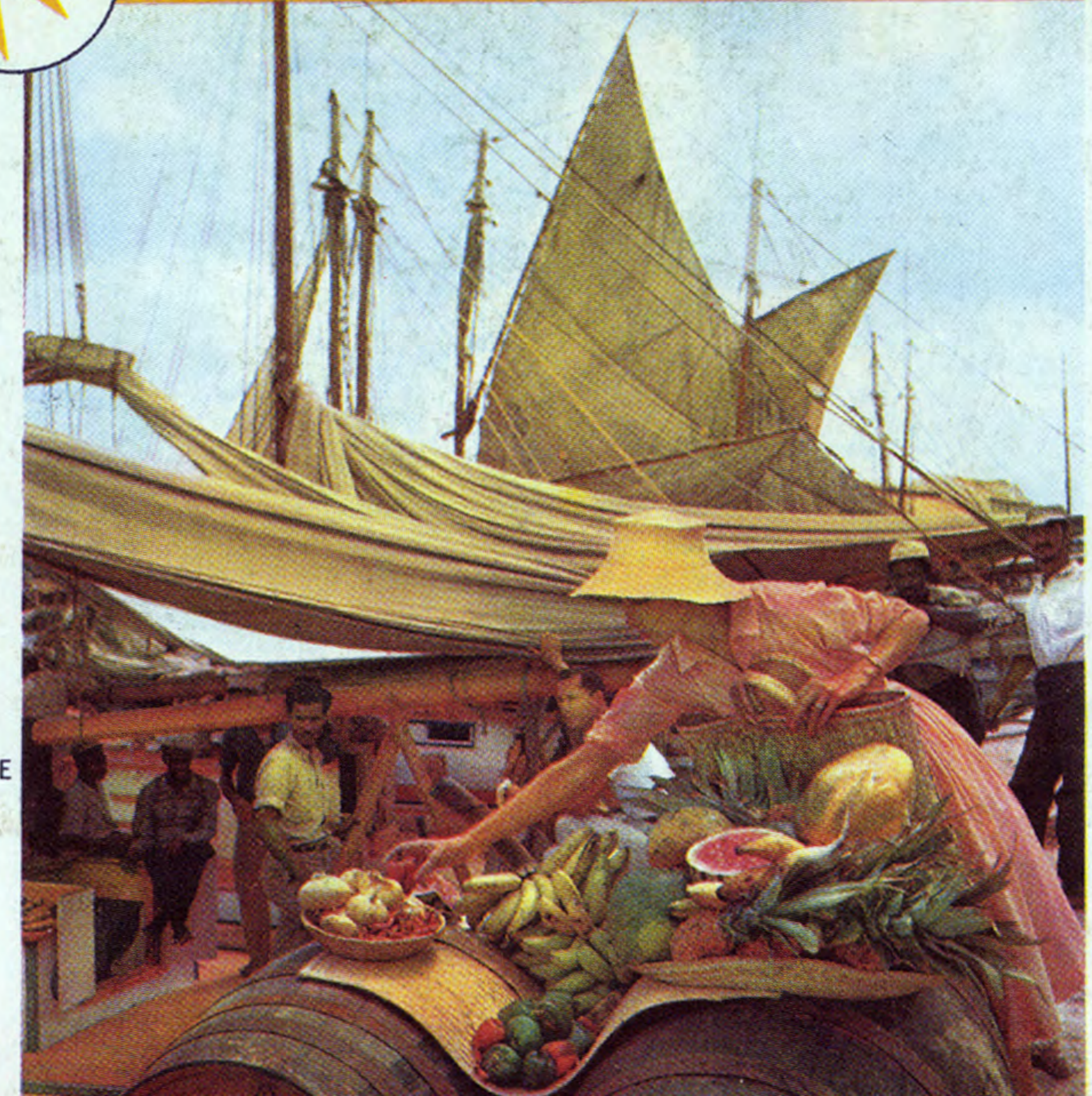
Brief descriptions of these Out Islands, and Bahamas Airways excursion fares to them are found within these pages. For full information, consult your travel agent, Bahamas Airways, or Bahamas Airways' agents.



**BAHAMAS
AIRWAYS**



The Airline of the Bahamas

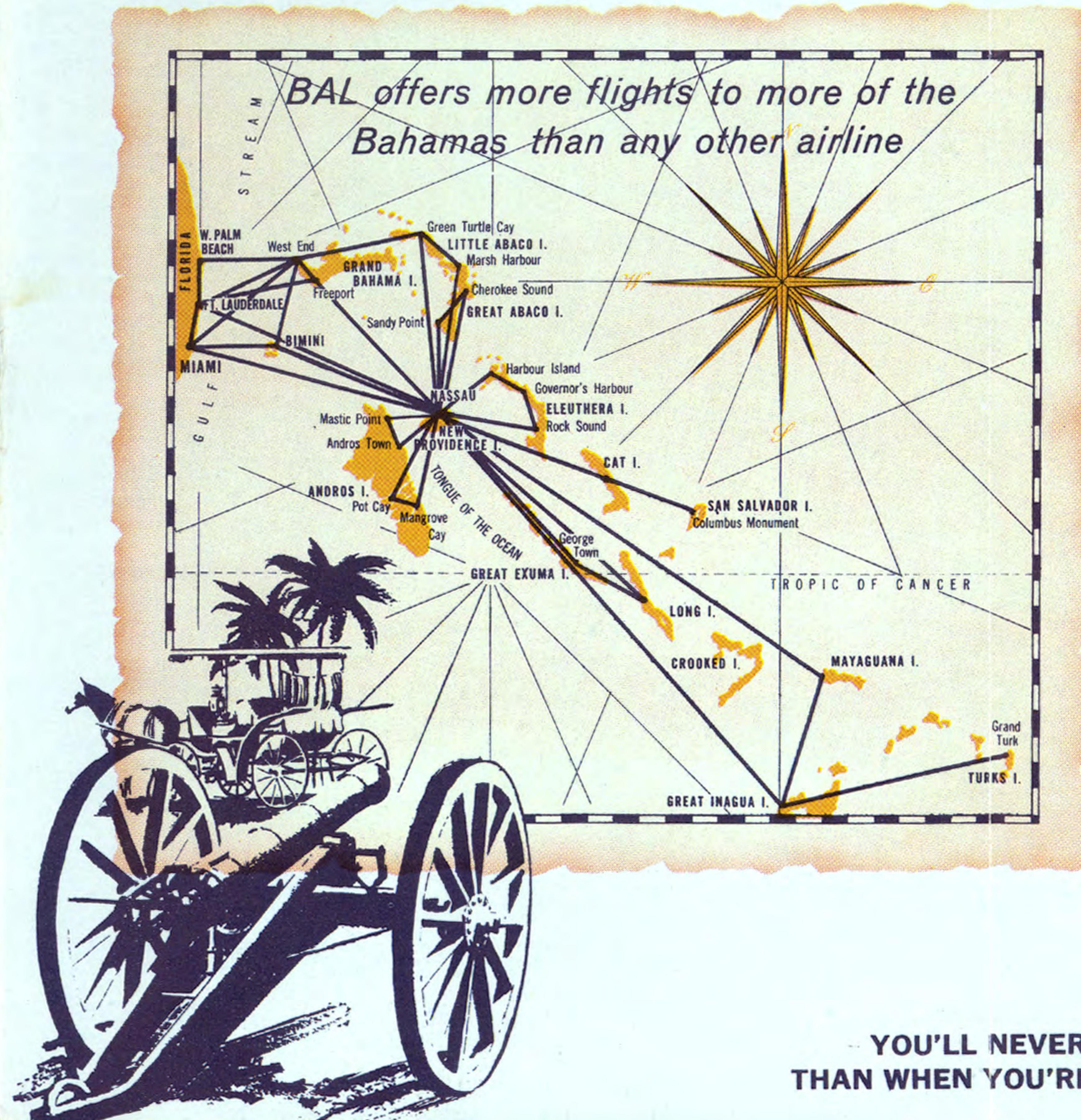
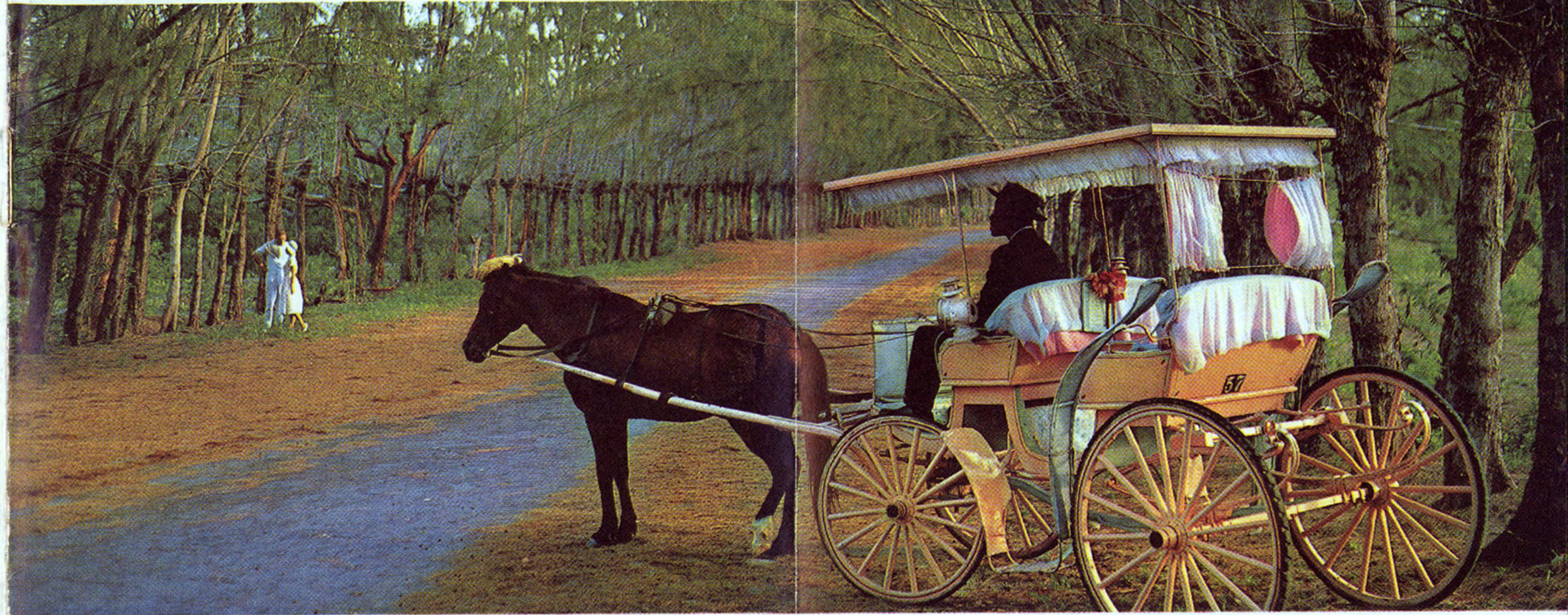


ASSOCIATE
OF BOAC

SCHEDULES • 1961

Effective September 15th, 1961 (until further notice)

**DISCOVER PLEASURE
TREASURES OF ALL
THE EXCITING BAHAMAS**



NASSAU, Resort Capital of the Bahamas is justly-famed for superb hotels, Bay Street shopping, picture-book Paradise Beach, yachting, fishing, sightseeing in quaint surreys! By all means, come to Nassau — but remember, Nassau should be but the beginning of your fun! The incredibly beautiful Out Islands offer unspoiled pleasure treasures for the knowing traveler. On the next page, read about other fabled vacation isles awaiting your delighted discovery!



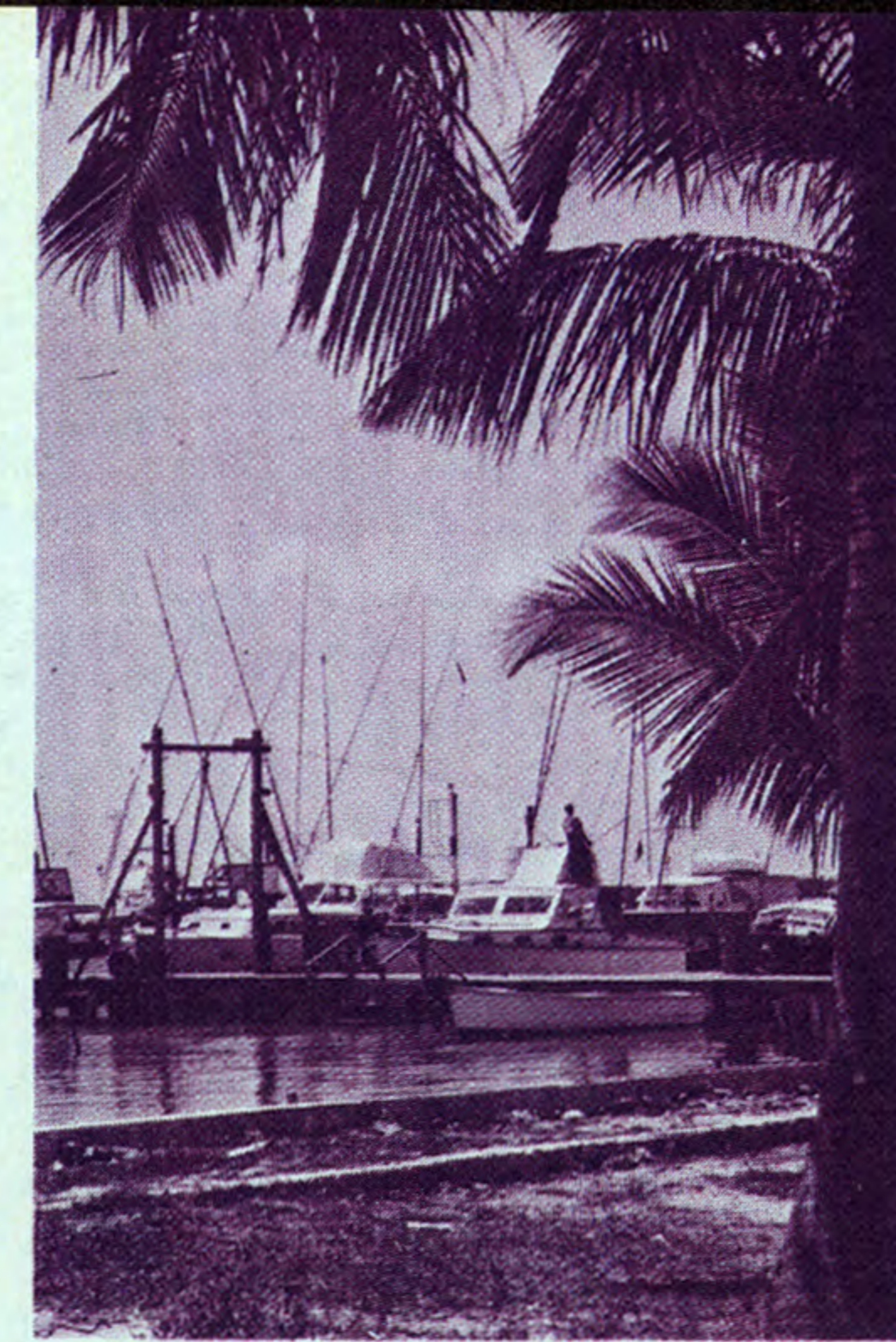
**— YOU'LL NEVER BE NEARER
THAN WHEN YOU'RE IN NASSAU**

GRAND BAHAMA

about 60 miles east of Palm Beach, is one of the largest islands. The two major towns are West End on the western tip, and Freeport, towards the center, with a rapidly developing resort and residential area between. Attractions include miles of beautiful beaches, excellent hotels (including the largest in the Bahamas), golf course, marinas, superb offshore, reef, and bone fishing.

BIMINI, slightly south of Grand Bahama and 50 miles east of Miami, is the closest of the Bahamas. On the edge of the Gulf Stream, it is world-famed for big-game fishing. Picturesque Alice Town has charming palm-lined lanes. Several excellent resorts offer pools, tennis, and other diversions.

ABACO (Great and Little Abaco) is the northernmost major Bahama island, lying just east of Grand Bahama. Many early settlers were Loyalists from the American colonies, and their speech still shows traces of Elizabethan accents. Green Turtle Cay has rolling hills, the air of a New England fishing village, several inns and cottage-groups. Marsh Harbour offers a beautiful beach, 22-room club, and water taxi to nearby Hope Town with its spectacular lighthouse, and to Man O' War Cay world-renown for fine, native-crafted boats.



Now—superb service and traditional Bahamian courtesy aboard the luxurious, radar-equipped

VISCOUNT

...as modern as the jet-age

Cruise swiftly, serenely in supreme comfort aboard Bahamas Airways radar-equipped Viscounts from Miami, Ft. Lauderdale, and West Palm Beach to Nassau and the principal Bahama islands! Turbo-powered for quiet, silk-smooth flights — and air-conditioned aloft and on the ground for year-'round comfort! Luxurious cabins feature two-abreast seating by large panoramic windows for fullest enjoyment of the spectacular Bahamas scenery!

The addition of Viscounts is another significant step forward in providing the finest of service for Bahamas air travel!

ANDROS, largest of the Bahamas, lies but 20 miles southwest of Nassau. The Western Hemisphere's largest coral reef rims the east coast, accounting for superlative fishing. Pine and mahogany cover provides excellent hunting. Andros Town is a favorite haven for yachtsmen and fishermen, has luxurious facilities. Pot Cay to the south is famed for bonefishing and hunting, has cottages and club.

ELEUTHERA, with richly varied, rolling scenery, lies directly to the east of Nassau. Settlers from England established a remarkable democracy there in 1647, earning a niche in history. Increasingly favored by the well-to-do international set, Eleuthera has unique pure-pink sand beaches and picturesque settlements such as Rock Sound with oceanfront golf course, elegant clubhouse, pool, and accommodations, Governor's Harbour on a hill overlooking a harbor with fine accommodations, and Harbour Island with outstanding fishing.

THE EXUMAS, beginning about 25 miles southeast of Nassau, curve southward for 100 miles. Georgetown, the principle settlement, has a magnificent harbor (site of the annual Out Island Regatta) and excellent accommodations. Many American notables have established "hide-away" residences in this area.

PASSENGER INFORMATION

Your Ticket and Conditions of Contract—Your ticket is issued subject to these regulations, and to our general conditions of carriage of passengers and baggage, extracts of which can be found in your ticket.

Scheduled and Delays of Flights — Schedules: The times shown in timetables or elsewhere are approximate and not guaranteed, and form no part of the contract of carriage. Carrier does not undertake to commence or complete carriage of passengers or baggage within any particular time. Schedules are subject to change without notice and carrier assumes no responsibility for making connections.

Reservations and Ticketing—Failure to show up at flight time for seats held may involve 50 per cent of the one-way passenger fare being forfeited. Passengers whose reservations are confirmed within the 24 hour period will be required to purchase their tickets as soon after confirmation as possible.

Ground Transfer Service: Except as otherwise Indicated in Carrier's Regulations, Carrier does not maintain, operate, or provide ground transfer service between airports or between airports and town centers.

Hotel Accommodation and meals: The cost of hotel accommodation and meals is not included in passenger fares.

Departures: Passengers are requested to be at airport ticket lifting point at least 30 minutes before scheduled departure time on domestic flights and 45 minutes for international flights.

Reservations may be cancelled if passengers have not presented themselves at the requested check-in times.

Children and Infants: One child under 2 years not occupying a seat will be carried free with each accompanying adult passenger. Children under 2 years occupying a seat or over 2 years and under 12 years will be charged one-half of the adult fare.

Baggage: Free baggage allowance on all services is 44 lbs. Baggage in excess of the free baggage allowance will be charged at the rate of 1 per cent of the one-way fare per kilo (2.2 lbs.) and will be carried only if the weight limit of the aircraft permits.

Freight: Freight services are available on all services and rates for this service can be obtained through any BAL office or its agents. Freight can be handed in at our Shirley St. office, Nassau.

Reconfirmation: To reconfirm your reservations, simply inform your local Bahamas Airways Agent, or in Nassau phone 8300, or cable BALAIR, Nassau, Bahamas.

Pets: Pets are accepted for travel, if safely crated, at the current excess baggage rates when accompanied by a passenger or freight rates if un-accompanied, whatever the case may be.

Hotel Accommodations: At certain points in the various Out Islands hotel accommodation is very limited and it is suggested, especially during the winter season, that passengers have confirmed accommodations in advance.

ALL AMPHIBIOUS OPERATIONS SUBJECT TO SEA CONDITIONS

BAHAMAS AIRWAYS SCHEDULES • 1961

Effective September 15th, 1961

FROM FLORIDA	BH 300 DC-3 EX. SUN.	BH 446 VISCOUNT DAILY	BH 302 DC-3 EX. SUN.	BH 444 VISCOUNT DAILY	BH 304 DC-3 EX. SUN.	BH 322 DC-3 DAILY	BH 450 VISCOUNT DAILY	BH 306 DC-3 SUNDAYS	BH 308 DC-3 EX. SUN.	BH 448 VISCOUNT DAILY
MIAMI	Lv 8:30			12:15		1:50	2:45	3:00		4:30
WEST PALM BEACH	Lv 9:20	9:00		12:30		↓	↓	3:20		↓
FORT LAUDERDALE	Ar 9:35	9:35	10:40	↓		2:20	↓	3:35 ^{FS}	5:00	↓
BIMINI	Ar	↓	↓	↓		2:35	3:15	↓	↓	↓
WEST END	Ar	↓	↓	↓		3:05	↓	↓	↓	↓
Grand Bahama	Lv	↓	↓	↓		3:30	↓	4:15	5:40	↓
FREEPORT	Ar	9:20	11:20	↓	1:05	3:45	↓	↓	↓	↓
Grand Bahama	Lv	↓	↓	↓		4:00	↓	↓	↓	↓
NASSAU	Ar	10:30		1:05		4:50				5:20

NOTE 4

TO FLORIDA	BH 301 DC-3 EX. SUN.	BH 443 VISCOUNT DAILY	BH 321 DC-3 DAILY	BH 303 DC-3 EX. SUN.	BH 447 VISCOUNT DAILY	BH 449 VISCOUNT DAILY	BH 305 DC-3 EX. SUN.	BH 307 DC-3 SUNDAYS	BH 309 DC-3 EX. SUN.	BH 445 VISCOUNT DAILY
NASSAU	Lv 9:30	11:00	11:15	11:30	1:30		4:00	4:45	6:00	6:00
FREEPORT	Lv	↓	↓	↓	↓	3:35	↓	↓	↓	↓
Grand Bahama	Ar	↓	↓	↓	↓	↓	↓	↓	↓	↓
WEST END	Lv	↓	↓	↓	↓	↓	↓	↓	↓	↓
Grand Bahama	Ar	↓	↓	↓	↓	↓	↓	↓	↓	↓
BIMINI	Ar	↓	12:05	↓	↓	↓	↓	↓	↓	↓
WEST PALM BEACH	Ar	↓	12:20	↓	↓	↓	↓	↓	↓	↓
FORT LAUDERDALE	Lv 10:10	↓	↓	↓	↓	↓	4:40	↓	↓	6:50
WEST PALM BEACH	Lv	↓	↓	↓	↓	↓	↓	↓	↓	7:05
MIAMI	Ar	11:50	12:50	12:05	2:20	4:05		6:35	6:50	7:30

NOTE 4

LIGHT FACE:
AM TIMES
BOLD FACE:
PM TIMES

F.S. FLAGSTOP AS REQUIRED

CONNECTIONS BETWEEN
THE OUT ISLANDS
AND FLORIDA ARE IN
RED SHADED AREAS

GRAND BAHAMA	BH 341/342 DC-3 DAILY	BH 321/322 DC-3 DAILY
NASSAU	Lv 9:00	
FREEPORT	Ar 9:50	
Grand Bahama	Lv 10:05	
WEST END	Ar 10:20	
Grand Bahama	Lv 10:45	
WEST PALM BEACH	Ar 11:15	
NASSAU	Lv 12:15	
MIAMI	Lv	1:50
BIMINI	Ar	2:20
WEST END	Lv	2:35
Grand Bahama	Ar	3:05
FREEPORT	Lv	3:30
Grand Bahama	Ar	3:45
GREEN TURTLE CAY	Lv	4:00
Abaco	Ar	
MARSH HARBOUR	Lv	
Abaco	Ar	
NASSAU	Lv	

ELEUTHERA	BH 444 VISCOUNT DAILY
MIAMI	Lv 12:15
NASSAU	Ar 1:05
NASSAU	Lv
HARBOUR ISLAND	Ar
Eleuthera	Lv
ROCK SOUND	Ar
Eleuthera	Lv
GOVERNORS HARBOUR	Ar
Eleuthera	Lv
HARBOUR ISLAND	Ar
Eleuthera	Lv
ROCK SOUND	Ar
Eleuthera	Lv
NASSAU	Ar
NASSAU	Lv
FORT LAUDERDALE	Ar
WEST PALM BEACH	Lv
MIAMI	Ar

ABACO	BH 331/332 DC-3 DAILY	BH 341/342 DC-3 DAILY
WEST PALM BEACH	Lv	12:15
WEST END	Ar	12:45
Grand Bahama	Lv	1:15
NASSAU	Lv	↓
MARSH HARBOUR	Ar	↓
Abaco	Lv	8:15
GREEN TURTLE CAY	Ar	9:00
Abaco	Lv	9:15
MARSH HARBOUR	Ar	9:30
Abaco	Lv	9:40
NASSAU	Ar	2:00
NASSAU	Lv	2:15
NASSAU	Ar	2:30
NASSAU	Lv	2:45
NASSAU	Ar	3:30
NASSAU	Lv	
MIAMI	Ar	

BIMINI	BH 321/322 DC-3 DAILY
NASSAU	Lv 11:15
BIMINI	Ar 12:05
NASSAU	Lv 12:20
MIAMI	Ar 12:50
BIMINI	Lv 1:50
WEST END	Ar 2:20
Grand Bahama	Lv 2:35
FREEPORT	Ar 3:05
Grand Bahama	Lv 3:30
NASSAU	Ar 3:45
NASSAU	Lv 4:00
NASSAU	Ar 4:50

NOTE 1. BH 281/282 flagstops
Lisbon Creek on Thursdays only.

NOTE 2. BH 381/382 operated by
Aero Commander Mon. thru Fri.

NOTE 3. BH 371/372 operates via
Mayaguana on Sept. 26, Oct. 10, etc.

NOTE 4. Until December 15 the
Florida-Freeport services are
operated on contract to B.A.L.

MIAMI: BOAC/BAL Ticket Office
329 E. Flagler Street
Phone: FR 1-7528

NASSAU: Bahamas Airways, Ltd.
Shirley Street
Phone: 8300

FT. LAUDERDALE: Phone: JA 4-2506 W. PALM BEACH: Phone: OV 3-3377

OR ANY BOAC OFFICE THROUGHOUT THE U. S. A. AND THE WORLD

ANDROS	BH 446 VISCOUNT DAILY
WEST PALM BEACH	Lv 9:00
FORT LAUDERDALE	Ar 9:20
NASSAU	Lv 9:35
NASSAU	Ar 10:30
NASSAU	Lv
ANDROS TOWN	Ar
Andros	Lv
MASTIC POINT	Ar
Andros	Lv
NASSAU	Ar
NASSAU	Lv
FORT LAUDERDALE	Ar
WEST PALM BEACH	Lv
MIAMI	Ar

NOTE 2

TURKS, CAICOS, INAGUA, MAYAGUANA	BH 371/372 DC-3 ALTERNATE TUESDAYS
NASSAU	Lv 7:45
MAYAGUANA	Ar 9:55
INAGUA	Lv 10:05
INAGUA	Ar 10:45
SOUTH CAICOS	Lv 11:15
TURKS ISLAND	Ar 12:25
INAGUA	Lv 1:10
NASSAU	Ar 2:20
NASSAU	Lv 2:45
NASSAU	Ar 5:00
NASSAU	Lv
FORT LAUDERDALE	Ar
WEST PALM BEACH	Lv

NOTE 3

SAN SALVADOR AND CAT ISLAND	BH 446 VISCOUNT DAILY
WEST PALM BEACH	Lv 9:00
FORT LAUDERDALE	Ar 9:20
NASSAU	Lv 9:35
NASSAU	Ar 10:30
NASSAU	Lv
CAT ISLAND	Ar
SAN SALVADOR	Lv
CAT ISLAND	Ar
NASSAU	Lv
NASSAU	Ar

EXUMA AND LONG ISLAND	BH 446 VISCOUNT DAILY
WEST PALM BEACH	Lv 9:00
FORT LAUDERDALE	Ar 9:20
NASSAU	Lv 9:35
NASSAU	Ar 10:30
NASSAU	Lv
GEORGETOWN	Ar
Exumas	Lv
LONG ISLAND	Ar
LONG ISLAND	Lv
GEORGETOWN	Ar
Exumas	Lv
NASSAU	Ar

GENERAL AGENTS FLORIDA AND WEST INDIES: BWIA
GENERAL AGENTS REST OF WORLD: BOAC

Flights, schedules, and equipment
subject to change without notice



NEW LOW PASSENGER FARES FOR REGULAR FLIGHTS *From Sept. 15, 1961* **TOURIST**

INTERNATIONAL

MIAMI TO:	DOLLARS		STERLING	
	O.W.	R.T.	O.W.	R.T.
BIMINI	\$12.00	\$ 21.00	£4. 6. 0	£7. 10. 0
FREEPORT	15.00	25.00	5. 7. 0	8. 19. 0
GOV. HARBOUR	28.00	50.40	10. 0. 0	18. 0. 0
HARBOUR ISLAND	25.00	45.00	8. 19. 0	16. 1. 0
MARSH HARBOUR	27.50	50.00	9. 16. 0	17. 17. 0
NASSAU	18.00	33.00	6. 10. 0	11. 16. 0
HAITI	60.00	108.00	21. 8. 0	38. 11. 0
ROCK SOUND	30.00	54.00	10. 14. 0	19. 6. 0
WEST END	15.00	25.00	5. 7. 0	8. 19. 0
FT. LAUDERDALE TO:				
FREEPORT	13.00	23.00	4. 13. 0	8. 4. 0
GOV. HARBOUR	28.00	50.40	10. 0. 0	18. 0. 0
GREEN T. CAY	21.00	37.80	7. 10. 0	13. 10. 0
HARBOUR ISLAND	25.00	45.00	8. 19. 0	16. 1. 0
MARSH HARBOUR	25.00	45.00	8. 19. 0	16. 1. 0
NASSAU	18.00	33.00	6. 10. 0	11. 16. 0
WEST END	13.00	23.00	4. 13. 0	8. 4. 0
WEST PALM BEACH TO:				
FREEPORT	11.00	20.00	3. 18. 6	7. 3. 0
GOV. HARBOUR	28.00	50.40	10. 0. 0	18. 0. 0
GREEN T. CAY	20.00	36.00	7. 3. 0	12. 17. 0
HARBOUR ISLAND	25.00	45.00	8. 19. 0	16. 1. 0
MARSH HARBOUR	23.00	42.00	8. 4. 0	15. 0. 0
NASSAU	18.00	33.00	6. 10. 0	11. 16. 0
WEST END	11.00	20.00	3. 18. 6	7. 3. 0

DOMESTIC

NASSAU TO:	DOLLARS		STERLING	
	O.W.	R.T.	O.W.	R.T.
ANDROS TOWN	\$ 4.40	\$ 7.90	£1. 11. 0	£2. 16. 0
BIMINI	17.50	31.50	6. 5. 0	11. 5. 0
CAT. ISLAND	13.50	24.30	4. 16. 0	8. 13. 0
CHEROKEE SOUND	11.20	20.20	4. 0. 0	7. 4. 0
FREEPORT	18.40	33.00	6. 11. 0	11. 16. 0
GEORGETOWN	16.50	29.70	5. 18. 0	10. 12. 0
GOV. HARBOUR	11.10	20.00	3. 19. 0	7. 3. 0
GREEN T. CAY	15.60	28.00	5. 11. 0	10. 0. 0
HARBOUR ISLAND	8.40	15.10	3. 0. 0	5. 8. 0
INAGUA	35.00	63.00	12. 10. 0	22. 10. 0
LONG ISLAND	18.20	32.80	6. 10. 0	11. 14. 0
MAYAGUANA	33.60	60.50	12. 0. 0	21. 12. 0
MANGROVE CAY	9.30	16.70	3. 6. 0	5. 19. 0
MARSH HARBOUR	15.00	27.00	5. 7. 0	9. 13. 0
MASTIC POINT	4.50	8.10	1. 12. 0	2. 18. 0
MORES ISLAND	11.20	20.10	4. 0. 0	7. 4. 0
PORT-AU-PRINCE	55.00	99.40	19. 13. 0	35. 10. 0
POT CAY	8.40	15.10	3. 0. 0	5. 8. 0
ROCK SOUND	11.80	21.30	4. 4. 0	7. 12. 0
SANDY POINT	8.40	15.10	3. 0. 0	5. 8. 0
SAN SALVADOR	21.00	37.80	7. 10. 0	13. 10. 0
S. CAICOS	43.40	78.10	15. 10. 0	27. 18. 0
TURKS ISLAND	43.40	78.10	15. 10. 0	27. 18. 0
WEST END	20.30	36.60	7. 5. 0	13. 1. 0

INTER ISLAND SECTOR FARES

BIMINI TO:	DOLLARS		STERLING	
	O.W.	R.T.	O.W.	R.T.
ANDROS TOWN	\$15.80	\$28.50	£5. 13. 0	£10. 4. 0
MASTIC POINT	13.00	23.40	4. 13. 0	8. 7. 0
WEST END	10.10	18.20	3. 12. 0	6. 10. 0
GREEN TURTLE CAY TO:				
FREEPORT	12.20	22.00	4. 7. 0	7. 17. 0
MARSH HARBOUR	4.10	7.40	1. 9. 0	2. 13. 0
WEST END	16.80	30.30	6. 0. 0	10. 16. 0
HARBOUR ISLAND TO:				
ROCK SOUND	7.00	12.60	2. 10. 0	4. 10. 0
MARSH HARBOUR TO:				
FREEPORT	15.00	27.00	5. 7. 0	9. 13. 0
GOV. HARBOUR	14.00	25.20	5. 0. 0	9. 0. 0
WEST END	16.80	30.30	6. 0. 0	10. 16. 0
GOVERNORS HARBOUR TO:				
FREEPORT	24.00	43.20	8. 11. 6	15. 9. 0
HARBOUR ISLAND	4.10	7.40	1. 9. 0	2. 13. 0
ROCK SOUND	4.10	7.40	1. 9. 0	2. 13. 0
WEST END	27.20	49.00	9. 14. 0	17. 10. 0
ANDROS TOWN TO:				
MASTIC POINT	4.10	7.40	1. 9. 0	2. 13. 0

FREE BAGGAGE ALLOWANCE OF 44 LBS. ON ALL BAHAMAS AIRWAYS FLIGHTS.
EXCESS BAGGAGE CHARGED AT ONE PERCENT OF ONE WAY FARE PER 2.2 LBS.
MAINLAND AIRSTRIP PASSENGERS ARE RESPONSIBLE FOR THEIR OWN SEA AND GROUND TRANSPORTATION TO AND FROM AIRSTRIPS AND SETTLEMENTS. TICKETS FOR BOAT TRANSPORTATION CAN BE PURCHASED BEFORE NASSAU DEPARTURE.

CHARTER RATES ON APPLICATION FOR: 48 SEATER VISCOUNT • 30 SEATER DC-3 • 6 SEATER AERO COMMANDER • 6 SEATER GOOSE

AMPHIBIOUS SERVICES

ABACO	BH 211/212 GOOSE MON. FRI.	ANDROS	BH 281/282 GOOSE SUN. TUE. THU.
NASSAU	Lv 1:00	NASSAU	Lv 3:00
SANDY POINT	Ar 1:30	MANGROVE CAY	Ar 3:30
MORES ISLAND	Lv 1:40	POT CAY	Lv 3:45
CHEROKEE SOUND	Ar F.S.	NASSAU	Ar 3:55
NASSAU	Lv 2:00		Lv 4:05
	Ar 2:15		Ar 4:35
	Lv 3:00		

NOTE 1. BH 281/282 flagstops Lisbon Creek on Thursdays only.

SPECIAL DAY EXCURSION FARES

NASSAU TO:	DOLLARS	STERLING
ABACO	\$24.00	£8. 12. 0
BIMINI	28.00	10. 0. 0
GRAND BAHAMA	30.00	10. 14. 0
GOV. HARBOUR	18.00	6. 10. 0
HARBOUR ISLAND	13.00	4. 13. 0
ROCK SOUND	20.00	7. 3. 0



For information and reservations contact these BOAC offices:

NEW YORK	530 5th AVE.	MU 7-1600
ATLANTA	1616 FULTON NAT'L BANK	JA 3-2821
CHICAGO	2 N. MICHIGAN AVE.	DE 2-7744
CLEVELAND	240 HANNA BLDG.	SU 1-6580
DALLAS	1740 MERCANTILE DALLAS BLDG.	RI 1-1681
DETROIT	1239 WASHINGTON BLVD.	WO 1-8400
HOUSTON	921 MAIN ST.	FA 3-2141
LOS ANGELES	433 W. 7th ST.	BR 2-8866
PHILADELPHIA	1710-12 PENN. BLVD.	LO 8-5070
PITTSBURGH	2213 FIRST NAT'L BANK BLDG.	CO 1-4300
ST. LOUIS	411 N. 7th ST.	CE 1-1075
WASHINGTON	1124 CONNECTICUT AVE., N.W.	EX 3-8508

fares are subject to change without notice.

YOU'VE A FRIEND IN THE BAHAMAS TELEPHONE DIRECTORY!

Many times, while enjoying the strange sights in a foreign land, travellers will discover a familiar sign: the Shell symbol. This should not be surprising. Shell is everywhere because oil is needed everywhere. Shell companies are local institutions in 130 different countries, and each one will be happy to be of service to you. Not only will you find products of the same high quality to which you are accustomed, but you can also expect the same courtesy, friendliness, and willing assistance that you receive from the Shell dealer near your home.

When you are a Shell customer, you have a friend listed in every telephone directory in the world.

THE SHELL COMPANY OF THE BAHAMAS, LTD.

EXCLUSIVE DISTRIBUTORS: PETROLEUM DISTRIBUTORS OF THE BAHAMAS, LTD.
NASSAU • ELEUTHERA • ABACO • BIMINI • GREEN TURTLE CAY • NORMANS CAY