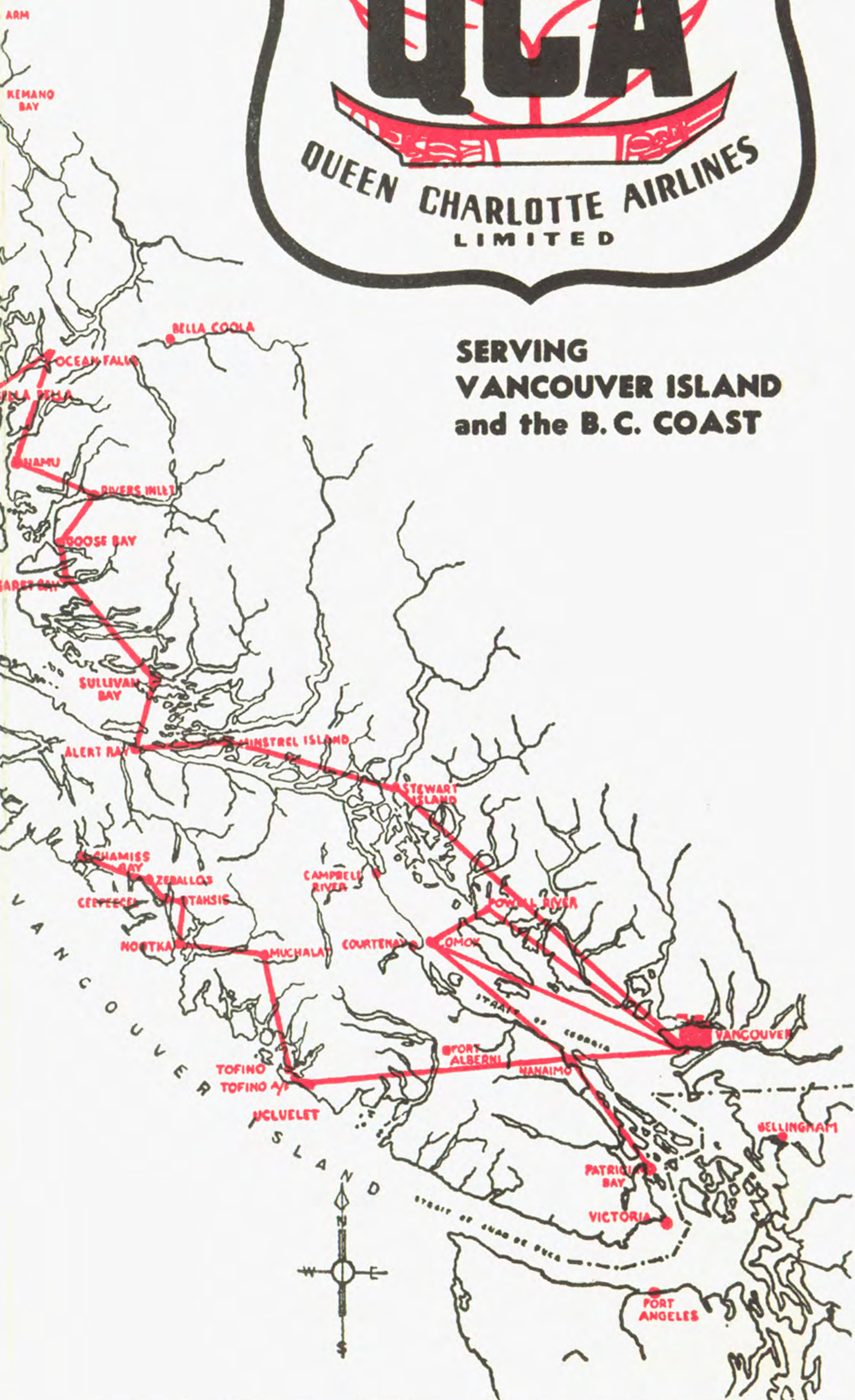


**EFFECTIVE
MARCH 16, 1953**

Fly



**SERVING
VANCOUVER ISLAND
and the B. C. COAST**



Authorized by the Air Transport Board of Canada to operate Scheduled, Non-scheduled and Charter Services.

GENERAL INFORMATION

- BAGGAGE** Baggage will be carried on any full fare or half fare ticket up to a maximum of 40 pounds. Baggage or other personal property in excess of 40 pounds will be charged for at current tariff rates. Excess baggage will be accepted subject to aircraft weight and space limitations.
- LIABILITY** Liability of the carrier for loss of, or damage to, or any delay in the delivery of personal property, including baggage, is limited to the amount of \$50.0 per ticket.
- FARES** Fares and other information published herein are subject to Tariff regulations and change without notice. Current tariffs are maintained in all ticket offices of the Company, and are open to public inspection.
- CHILDREN** Children under two years of age for whom seats are reserved and children two years of age and under twelve years of age, will be charged one-half of the full normal adult fare. ONE child under two years of age and not occupying a seat, will be carried free with each adult fare.
- LIMITS AND STOPOVERS** Tickets are valid for a period of one month from date of issue. Tickets are non-transferable. Stopovers are permitted at any point en route within the limits of the ticket in accordance with Company Tariffs.
- LIQUOR** Any passenger considered to be under the influence of liquor will be refused passage, and any passenger considered to be so affected en route will be deplaned.
- GROUND TRANSPORTATION** Limousine services are not operated by Q.C.A., and are therefore at passengers' option.
- RESERVATIONS** Must be made in advance and tickets purchased within time limits specified by the Company.

FLY NOW—PAY LATER



QUEEN CHARLOTTE AIRLINES LIMITED



AIRPORT TRAFFIC OFFICE
 Vancouver, A. M. F., B. C.
 For information, reservations, timetables, or air shipment rates, etc., phone
KErrisdale 6611

VANCOUVER CITY TICKET OFFICE
 1023 W. Georgia St. . . . Terminal for limousine service to Airport. For information, air shipment rates, timetables, etc., phone



Pacific 8726

AGENTS AND TICKET OFFICES SOUTHERN DIVISION

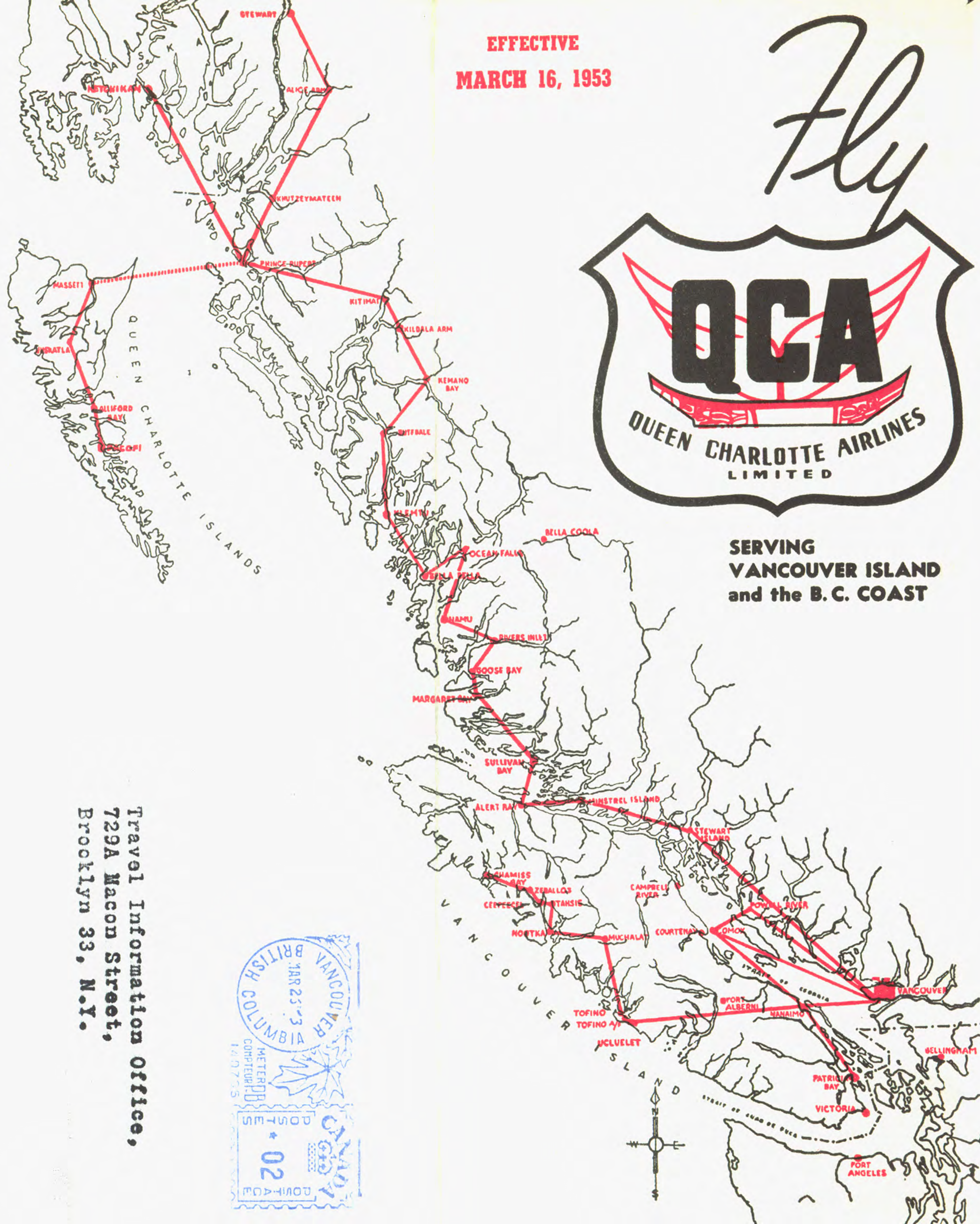
Point	Agent	Phone
ALERT BAY	Mrs. E. M. Kenmuir	
BEAVER COVE	M. B. Couvelier	
BLIND CHANNEL	S. Boardman	
CAMPBELL RIVER	54 Taxi	239
COMOX AIRPORT	Q.C.A.	61-R3
COURTENAY	Courtenay-Comox Travel Service	555
DUNCAN	Kyle Taxi	103
MINSTREL ISLAND	E. Trollope	
NANAIMO	Mrs. D. Vanderlip	2589
NANAIMO AIRPORT	Q.C.A.	1975 & 619-L-2
OCEAN FALLS	Mrs. R. Kunderman	
PARKSVILLE	W. L. Slater (Rambler Tea Room)	80
PORT McNEIL	J. C. McCallum	
POWELL RIVER	Hopper & Jamieson, Q.C.A.	3911
POWELL RIVER AIRPORT	Q.C.A.	2289
QUALICUM BEACH	H. C. Good	2681
REFUGE COVE	D. Hope	
SEYMOUR INLET	Oskar Johnson	
SIMOOM SOUND	Mrs. D. Sutherland	
SOINTULA	P. A. Hilton	14-L
STUART ISLAND	V. B. Willcock	
SULLIVAN BAY	Mrs. B. Collinson	
THURLOW		
TOFINO	Ian McLorie	
VICTORIA	C & C Transportation Co.	Empire 6321
ZEBALLOS	Lloyd Crabbe	

NORTHERN DIVISION

ALICE ARM	Mrs. B. A. Oliver	
MASSETT	H. G. Grey	
PRINCE RUPERT	Q.C.A., Killas & Christopher Bldg.	476
QUEEN CHARLOTTE CITY	Mrs. L. E. Williams	
SANDSPIT	J. R. Gillett	
STEWART	J. McKay	

PRINTED IN CANADA

QUEEN CHARLOTTE AIRLINES LIMITED
 VANCOUVER, A. M. F., B. C.



EFFECTIVE
 MARCH 16, 1953

Fly



SERVING
 VANCOUVER ISLAND
 and the B. C. COAST

Travel Information Office,
 729A Macou Street,
 Brooklyn 33, N.Y.

Authorized by the Air Transport Board of Canada to operate Scheduled, Non-scheduled and Charter Services.

INTER-CITY SERVICES

Operating Cert. 416 A.T.B. Class 1 Licence 484/50 (S)

Vancouver — *Comox — Powell River

Read Down		Daily Except Sunday		Read Up	
5	9		6		10
8.00	3.15	Lv. Vancouver	Ar. 10.55		6.10
8.45	4.00	Ar. *Comox	Lv. 10.10		5.25
9.00	4.15	Lv. Comox	Ar. 9.55		5.10
9.20	4.35	Ar. Powell River	Lv. 9.35		4.50

*Limousine service to Courtenay and Campbell River.

*Connecting Air Service to Knight Inlet, Refuge Cove, Cortez Island, Forbes Bay, Homfray Creek, Stuart Island, Toba Inlet, Bute Inlet, Thurlow, Rock Bay, Camp Point, Forward Harbour, Loughborough Inlet, Heydon Bay, Fraser Bay, Port Neville.

Operating Cert. 416 A.T.B. Class 1 Licence 484/50 (S)

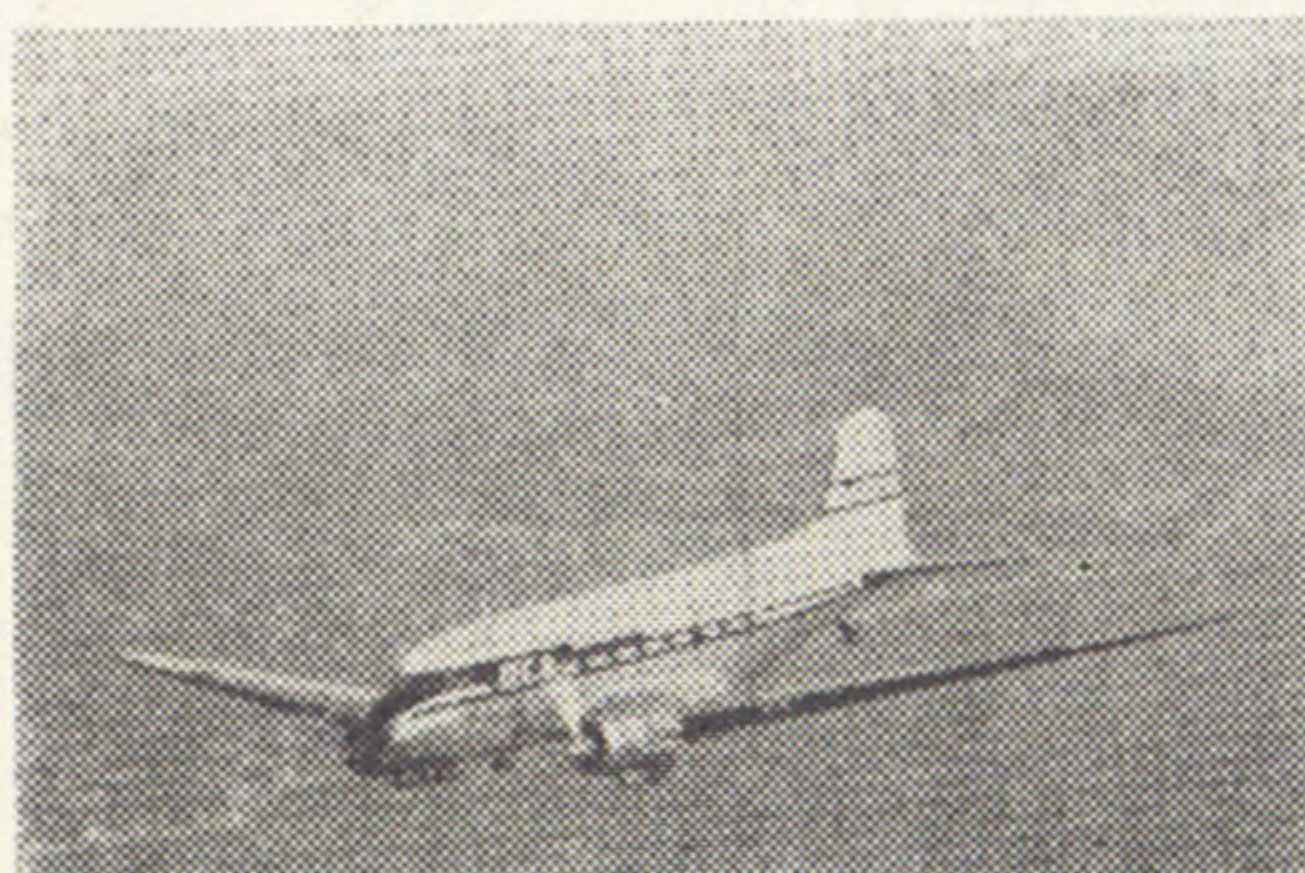
Vancouver — Nanaimo

Read Down		Daily Except Sunday		Read Up		
15	19	25		16	20	26
7.45	11.30	4.45	Lv. Vancouver	Ar. 9.00	3.00	6.00
8.15	12.00	5.15	Ar. *Nanaimo	Lv. 8.30	2.30	5.30

*Limousine service to Nanaimo, Ladysmith, Chemainus and Duncan.

ONE-WAY FARES AND SHIPPING CHARGES

	Vancouver	Nanaimo	Comox	Powell River	Tofino
Vancouver	••	4.60	8.90	9.50	21.00
Nanaimo03	••	••	••	16.10
Comox06	••	••	5.25	••
Powell River05	••	.03	••	••
Tofino11	.08	••	••	••



DC-3

The world's most familiar aircraft on commercial flight routes, successfully proven by millions of miles of air travel.



Your Crew

Captain, First Officer and Stewardess — A trained team to ensure a pleasant flight.



The Canso

Designed to operate from land or water, Q.C.A.'s Canso Amphibians carry passengers, freight and mail to coastal points. Flight stewards in attendance serve light refreshments en route adding to the pleasure of your trip.

Operating Cert. 417 A.T.B. Class 2 Licence 559/51 (NS)
A.T.B. Class 1 Licence 483/50 (S) Operating Cert. 418

Vancouver — Tofino — Zeballos

Read Down		Read Up	
41 Daily Except Sunday	37* Tuesday Thursday Saturday	42 Daily Except Sunday	38* Tuesday Thursday Saturday
10.45	8.30	Lv. Vancouver	Ar. 1.15
11.45	10.25	Ar. Tofino	Lv. 12.15
	10.40	Lv. Tofino	Ar.
	F	Ar. Muchalat	
	11.05	Lv. Muchalat	
	11.20	Ar. Nootka	
	F11.30	Lv. Tahsis	
	11.45	Ar. Tahsis	
		Lv. Ceepeecee	
		Ar. Ceepeecee	
		Lv. Chamiss Bay	1.35
		Ar. Chamiss Bay	1.20
	12.00	Lv. Zeballos	1.00

• F denotes flagstop.

* These points are served on a non-scheduled basis. Days, dates and times are subject to change or cancellation without notice.

▲ Light refreshments served.

ONE-WAY FARES AND SHIPPING CHARGES

	Vancouver	Nanaimo	Tofino	Muchalat	Nootka	Tahsis	Ceepeecee	Chamiss Bay	Zeballos
Vancouver	••	\$4.60	\$21.00	\$29.75	\$29.75	\$30.00	\$30.00	\$33.75	\$30.00
Nanaimo03	••	16.10						
Tofino11	.08	••						
Muchalat15			••					
Nootka15				••				
Tahsis15					••			
Ceepeecee15						••		
Chamiss Bay17							••	
Zeballos15								••

● Round Trip Fares Double One Way Less 10%. ● Shipping Charges in cents per pound Minimum shipment \$1.00

Operating Cert. 416 A.T.B. Class 1 Licence 484/50 (S)

Vancouver — Minstrel Island *Alert Bay — Sullivan Bay

Read Down		Read Up		One Way Fare & Shipping Charges	
3 ▲	Mon. Wed. Fri.	4 ▲		One Way	Per lb.
9.30	Lv. Vancouver	Ar. 3.30			
11.00	Ar. Minstrel Island	Lv. 2.00		28.00	.14
11.10	Lv. Minstrel Island	Ar. 1.50			
11.30	Ar. Alert Bay	Lv. 1.30		31.50	.16
11.40	Lv. Alert Bay	Ar. 1.20			
12.00	Ar. Sullivan Bay	Lv. 1.00		33.75	.17

*Connecting air and water services available to: Simoom Sound, Seymour Inlet, Belize Inlet, Englewood, Pt. McNeil, Sointula.

▲ Light refreshments served.

Operating Cert. 1060 A.T.B. Class 3 Licence 557/51 (NS)

Vancouver — Ocean Falls

Read Down		Effective May 1		Read Up	
211				212	
09.00	Lv. Vancouver	Ar. 3.30			
11.30	Ar. Ocean Falls	Lv. 12.30			

Operating Cert. 418 A.T.B. Class 2 Licence 601/51 (NS)

Vancouver — Kemano — Kitimat

<i>Service to be Resumed at a later date.</i>						
---	--	--	--	--	--	--

ONE-WAY FARES AND SHIPPING CHARGES

	Vancouver	Minstrel Is.	Alert Bay	Sullivan Bay	Ocean Falls	Kemano	Kitimat
Vancouver	••	\$28.00	\$31.50	\$33.75	\$42.00	\$47.00	\$49.00
Minstrel Is.14	••					
Alert Bay16		••				
Sullivan Bay17			••			
Ocean Falls21				••		
Kemano24					••	
Kitimat25						••

TO REDUCE DELAYS passengers are requested to observe the following airport check-in times:

- For unticketed passengers — 30 minutes.
- For ticketed passengers — 20 minutes.

ALL FLIGHTS WILL BE CLOSED OFF 10 MINUTES PRIOR TO DEPARTURE

NORTHERN DIVISION

Operating Cert. 1060 A.T.B. Class 3 Licence 557/51 (NS)

Prince Rupert — Kitimat — Kemano

Read Down		Tuesday and Friday		Read Up	
	57*		58*		
9.00	Lv. Prince Rupert	Ar. 2.00			
10.00	Ar. Kitimat	Lv. 1.00			
10.15	Lv. Kitimat	Ar. 12.45			
11.00	Ar. Kemano	Lv. 12.00			

Operating Cert. 1060 A.T.B. Class 3 Licence 551/51 (NS)

Prince Rupert — Alice Arm — Stewart

Read Down		Monday and Thursday		Read Up	
	53*		54*		
9.00	Lv. Prince Rupert	Ar. 1.25			
10.00	Ar. Alice Arm	Lv. 12.25			
10.15	Lv. Alice Arm	Ar. 12.10			
11.05	Ar. Stewart	Lv. 11.20			

* These points are served on a non-scheduled basis. Days, dates and times are subject to change or cancellation without notice.

ONE-WAY FARES AND SHIPPING CHARGES

Northern Division	Prince Rupert	Alice Arm	Stewart	Kitimat	Kemano
Prince Rupert	••	\$20.00	\$25.00	\$20.00	\$24.00
Alice Arm10	••			
Stewart13		••		
Kitimat10			••	
Kemano12				••



Seaplanes

Norseman seaplanes built for Northern flying, operate from Q.C.A.'s Prince Rupert base.



Charters

Cut costs and travelling time — inquire about Q.C.A.'s charter service. Fully equipped aircraft and trained crews available.