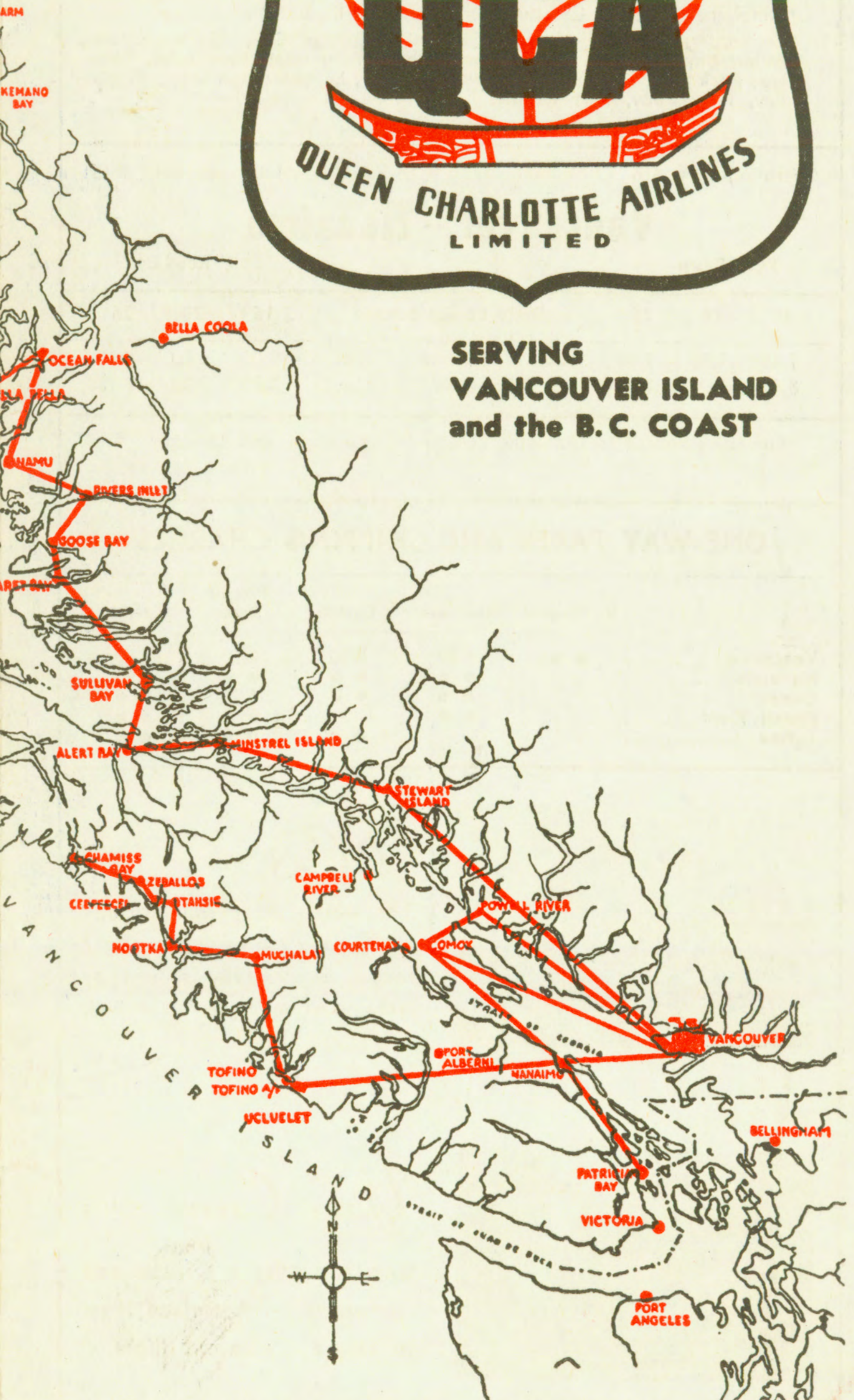


**EFFECTIVE
MAY 1, 1953**

Fly



**SERVING
VANCOUVER ISLAND
and the B. C. COAST**



Authorized by the Air Transport Board of Canada to operate Scheduled, Non-scheduled and Charter Services.

GENERAL INFORMATION

BAGGAGE Baggage will be carried on any full fare or half fare ticket up to a maximum of 40 pounds. Baggage or other personal property in excess of 40 pounds will be charged for at current tariff rates. Excess baggage will be accepted subject to aircraft weight and space limitations.

LIABILITY Liability of the carrier for loss of, or damage to, or any delay in the delivery of personal property, including baggage, is limited to the amount of \$50.0 per ticket.

FARES Fares and other information published herein are subject to Tariff regulations and change without notice. Current tariffs are maintained in all ticket offices of the Company, and are open to public inspection.

CHILDREN Children under two years of age for whom seats are reserved and children two years of age and under twelve years of age, will be charged one-half of the full normal adult fare. ONE child under two years of age and not occupying a seat, will be carried free with each adult fare.

LIMITS AND STOPOVERS Tickets are valid for a period of one month from date of issue. Tickets are non-transferable. Stopovers are permitted at any point en route within the limits of the ticket in accordance with Company Tariffs.

LIQUOR Any passenger considered to be under the influence of liquor will be refused passage, and any passenger considered to be so affected en route will be deplaned.

GROUND TRANSPORTATION Limousine services are not operated by Q.C.A., and are therefore at passengers' option.

RESERVATIONS Must be made in advance and tickets purchased within time limits specified by the Company.



QUEEN CHARLOTTE AIRLINES LIMITED



VANCOUVER CITY TICKET OFFICE
1023 W. Georgia St. . . . Terminal for limousine service to Airport. For information, air shipment rates, timetables, etc., phone

Pacific 8726

AIRPORT TRAFFIC OFFICE
Vancouver, A. M. F., B. C.
For information, reservations, timetables, or air shipment rates, etc., phone
KErrisdale 6611



AGENTS AND TICKET OFFICES

SOUTHERN DIVISION

Point	Agent	Phone
ALERT BAY	Mrs. E. M. Kenmuir	
BEAVER COVE	M. B. Couvelier	
BLIND CHANNEL	S. Boardman	
CAMPBELL RIVER	54 Taxi	239
COMOX AIRPORT	Q.C.A.	61-R3
COURTENAY	Courtenay-Comox Travel Service	555
DUNCAN	Kyle Taxi	103
MINSTREL ISLAND	E. Trollope	
NANAIMO	Mrs. D. Vanderlip	2589
NANAIMO AIRPORT	Q.C.A.	1975 & 619-L-2
OCEAN FALLS	Mrs. R. Kunderman	
PARKSVILLE	W. L. Slater (Rambler Tea Room)	80
PORT McNEIL	J. C. McCallum	
POWELL RIVER	Hopper & Jamieson, Q.C.A.	3911
POWELL RIVER AIRPORT	Q.C.A.	2289
QUALICUM BEACH	H. C. Good	2681
REFUGE COVE	D. Hope	
SEYMOUR INLET	Oskar Johnson	
SIMOOM SOUND	Mrs. D. Sutherland	
SOINTULA	P. A. Hilton	14-L
STUART ISLAND	V. B. Willcock	
SULLIVAN BAY	Mrs. B. Collinson	
THURLOW		
TOFINO	Ian McLorie	
VICTORIA	C & C Transportation Co.	Empire 6321
ZEBALLOS	Lloyd Crabbe	

NORTHERN DIVISION

ALICE ARM	Mrs. B. A. Oliver	
MASSETT	H. G. Grey	
PRINCE RUPERT	Q.C.A., Killas & Christopher Bldg.	476
SANDSPIT	J. R. Gillett	
STEWART	J. McKay	

PRINTED IN CANADA

EFFECTIVE
MAY 1, 1953

Fly



SERVING
VANCOUVER ISLAND
and the B.C. COAST



QUEEN CHARLOTTE AIRLINES LIMITED
VANCOUVER, A. M. F., B. C.

Travel Information Office,
729A Macdon Street,
Brooklyn 33, N.Y.



Authorized by the Air Transport Board of Canada to operate Scheduled, Non-scheduled and Charter Services.

FLY NOW—PAY LATER



A.M.—LIGHT FIGURES
P.M.—DARK FIGURES

INTER-CITY SERVICES

Operating Cert. 416 A.T.B. Class 1 Licence 484/50 (S)

Vancouver - *Comox - Powell River

Read Down Read Up

5	9	Daily Except Sunday		6	10
8.00	3.30	Lv. Vancouver	Ar.	10.55	6.25
8.45	4.15	Ar. *Comox	Lv.	10.10	5.40
9.00	4.30	Lv. Comox	Ar.	9.55	5.25
9.20	4.50	Ar. Powell River	Lv.	9.35	5.05

*Limousine service to Courtenay and Campbell River.

*Connecting Air Service to Knight Inlet, Refuge Cove, Cortez Island, Forbes Bay, Homfray Creek, Stuart Island, Toba Inlet, Bute Inlet, Thurlow, Rock Bay, Camp Point, Forward Harbour, Loughborough Inlet, Heydon Bay, Fraser Bay, Port Neville.

Operating Cert. 416 A.T.B. Class 1 Licence 484/50 (S)

Vancouver - Nanaimo

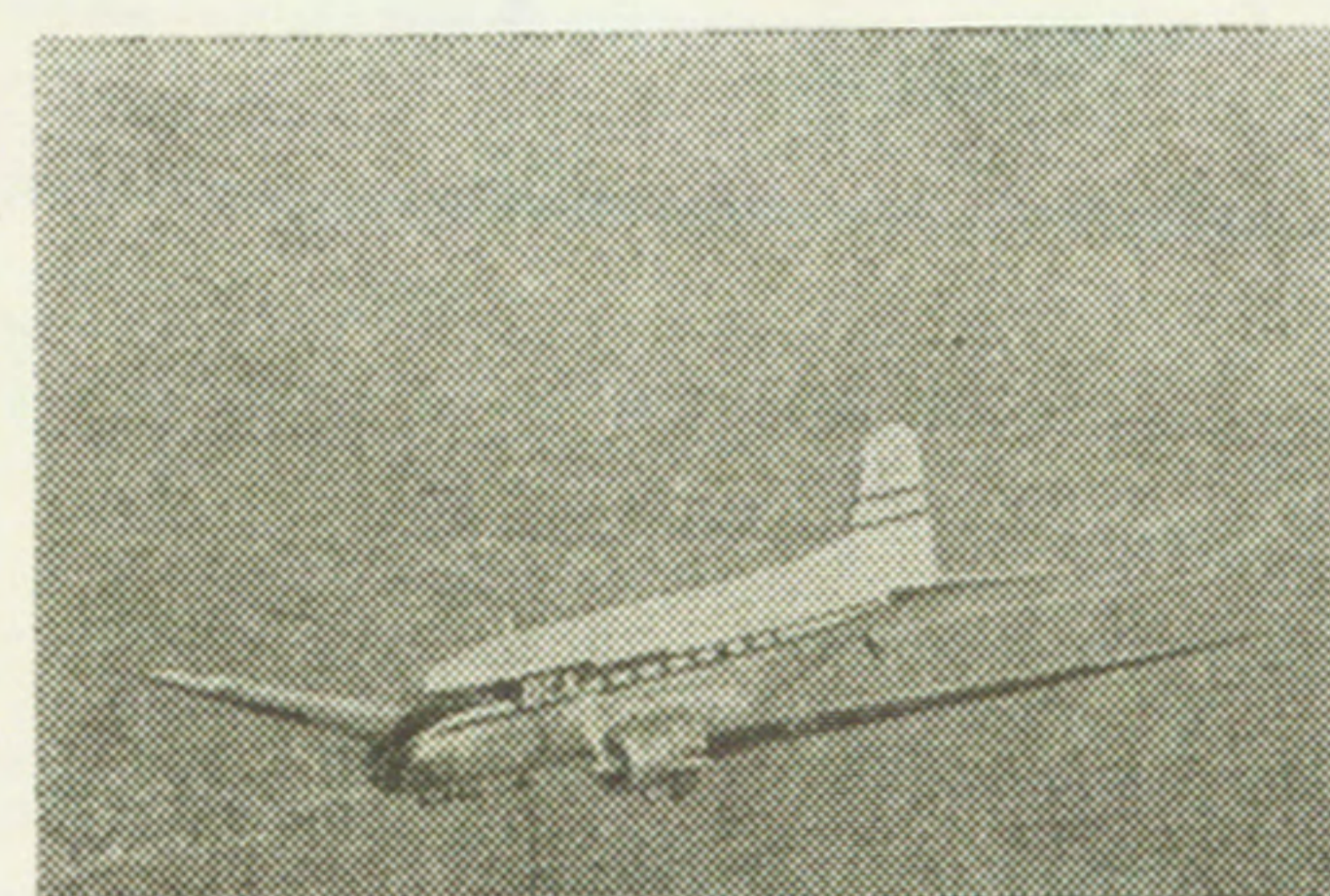
Read Down Read Up

15	19	25	Daily Except Sunday		16	20	26
7.45	11.30	7.00	Lv. Vancouver	Ar.	9.00	3.00	8.15
8.15	12.00	7.30	Ar. *Nanaimo	Lv.	8.30	2.30	7.45

*Limousine service to Nanaimo, Ladysmith, Chemainus and Duncan.

ONE-WAY FARES AND SHIPPING CHARGES

	Vancouver	Nanaimo	Comox	Powell River	Tofino
Vancouver	● ●	4.60	8.90	9.50	15.50
Nanaimo	.03	● ●	● ●	● ●	14.40
Comox	.05	● ●	● ●	5.25	● ●
Powell River	.05	● ●	.03	● ●	● ●
Tofino	.08	.07	● ●	● ●	● ●



DC-3

The worlds most familiar aircraft on commercial flight routes, successfully proven by millions of miles of air travel.



Your Crew

Captain, First Officer and Stewardess — A trained team to ensure a pleasant flight.

PACIFIC DAYLIGHT SAVING TIME



The Canso

Designed to operate from land or water, Q.C.A.'s Canso Amphibians carry passengers, freight and mail to coastal points. Flight stewards in attendance serve light refreshments en route adding to the pleasure of your trip.

Operating Cert. 417 A.T.B. Class 2 Licence 559/51 (NS) Operating Cert. 418 A.T.B. Class 1 Licence 483/50 (S)

Vancouver - Tofino - Zeballos

Read Down Read Up

41 Daily Except Sunday	37* Tuesday Thursday Saturday		42 Daily Except Sunday	38* Tuesday Thursday Saturday
11.30	8.30	Lv. Vancouver	Ar.	3.00
1.00		Ar. Tofino	Lv.	1.30
		Lv. Tofino	Ar.	
	10.25	Ar. Muchalat		
	10.40	Lv. Muchalat		
	11.05	Ar. Tahsis		
	11.20	Lv. Tahsis		
	F11.30	Ar. Ceepeecee		
	11.45	Lv. Ceepeecee		
		Lv. Chamiss Bay	Lv.	1.35
		Ar. Chamiss Bay	Ar.	1.20
		Lv. Zeballos	Lv.	1.00
	12.00			

● F denotes flagstop.

* These points are served on a non-scheduled basis. Days, dates and times are subject to change or cancellation without notice.

▲ Light refreshments served.

ONE-WAY FARES AND SHIPPING CHARGES

	Vancouver	Nanaimo	Tofino	Muchalat	Nootka	Tahsis	Ceepeecee	Chamiss Bay	Zeballos
Vancouver	● ●	\$4.60	\$15.50	\$29.75	\$29.75	\$30.00	\$30.00	\$33.75	\$30.00
Nanaimo	.03	● ●	14.40						
Tofino	.08	.07	● ●						
Muchalat	.15			● ●					
Nootka	.15				● ●				
Tahsis	.15					● ●			
Ceepeecee	.15						● ●		
Chamiss Bay	.17							● ●	
Zeballos	.15								● ●

Operating Cert. 416

A.T.B. Class 1 Licence 484/50 (S)

Vancouver - Minstrel Island *Alert Bay - Sullivan Bay

Read Down Read Up

3	Mon.	Wed.	Fri.	4	One Way Fares & Shipping Charges
▲				▲	
10.00	Lv. Vancouver		Ar.	4.15	Fares and Shipping Charges have been reduced. See revised rates below.
11.50	Ar. Alert Bay		Lv.	2.25	
12.00	Lv. Alert Bay		Ar.	2.15	
12.20	Ar. Minstrel Island		Lv.	F	
12.30	Lv. Minstrel Island		Ar.	F	
12.55	Ar. Sullivan Bay		Lv.	1.55	

*Connecting air and water services available to: Simoom Sound, Seymour Inlet, Belize Inlet, Englewood, Pt. McNeil, Sointula.

▲ Light refreshments served.

Operating Cert. 1060 A.T.B. Class 3 Licence 557/51 (NS)

Vancouver - Ocean Falls

Read Down Read Up

211 Friday	212 Friday
▲	▲
9.00	Lv. Vancouver
11.30	Ar. Ocean Falls
	Lv.
	Ar.
	3.30
	1.00

Operating Cert. 418 A.T.B. Class 2 Licence 601/51 (NS)

Vancouver - Kitimat

101	Tues.	*Thurs.	*Sat.	102
▲				▲
9.30	Lv. Vancouver		Ar.	6.15
1.15	Ar. Kitimat		Lv.	2.30

* Increase in service to Thursdays and Saturdays pending. For information phone KE. 6611 or PA. 8726. Above points are served on a non-scheduled basis. Days, dates and times are subject to change or cancellation without notice.

▲ Light refreshments served.

Vancouver - Kemano

For service between Vancouver and Kemano please phone KE. 6611 or PA. 8726 for flight information.

ONE-WAY FARES AND SHIPPING CHARGES

	Vancouver	Minstrel Is.	Alert Bay	Sullivan Bay	Ocean Falls	Kemano	Kitimat
Vancouver	● ●	\$25.00	\$25.00	\$25.00	\$42.00	\$47.00	\$49.00
Minstrel Is.	.12	● ●					
Alert Bay	.12		● ●				
Sullivan Bay	.12			● ●			
Ocean Falls	.21				● ●		
Kemano	.24					● ●	
Kitimat	.25						● ●

TO REDUCE DELAYS passengers are requested to observe the following airport check-in times:

- For unticketed passengers — 30 minutes.
- For ticketed passengers — 20 minutes.

ALL FLIGHTS WILL BE CLOSED OFF 10 MINUTES PRIOR TO DEPARTURE

A.M.—LIGHT FIGURES
P.M.—DARK FIGURES

NORTHERN DIVISION

Operating Cert. 1060 A.T.B. Class 3 Licence 557/51 (NS)

Prince Rupert - Kitimat - Kemano

Read Down Read Up

57*	Tuesday and Saturday	58*
9.00	Lv. Prince Rupert	Ar.
10.00	Ar. Kitimat	Lv.
10.15	Lv. Kitimat	Ar.
11.00	Ar. Kemano	Lv.
	2.00	
	1.00	
	12.45	
	12.00	

Operating Cert. 1060 A.T.B. Class 3 Licence 551/51 (NS)

Prince Rupert - Alice Arm - Stewart

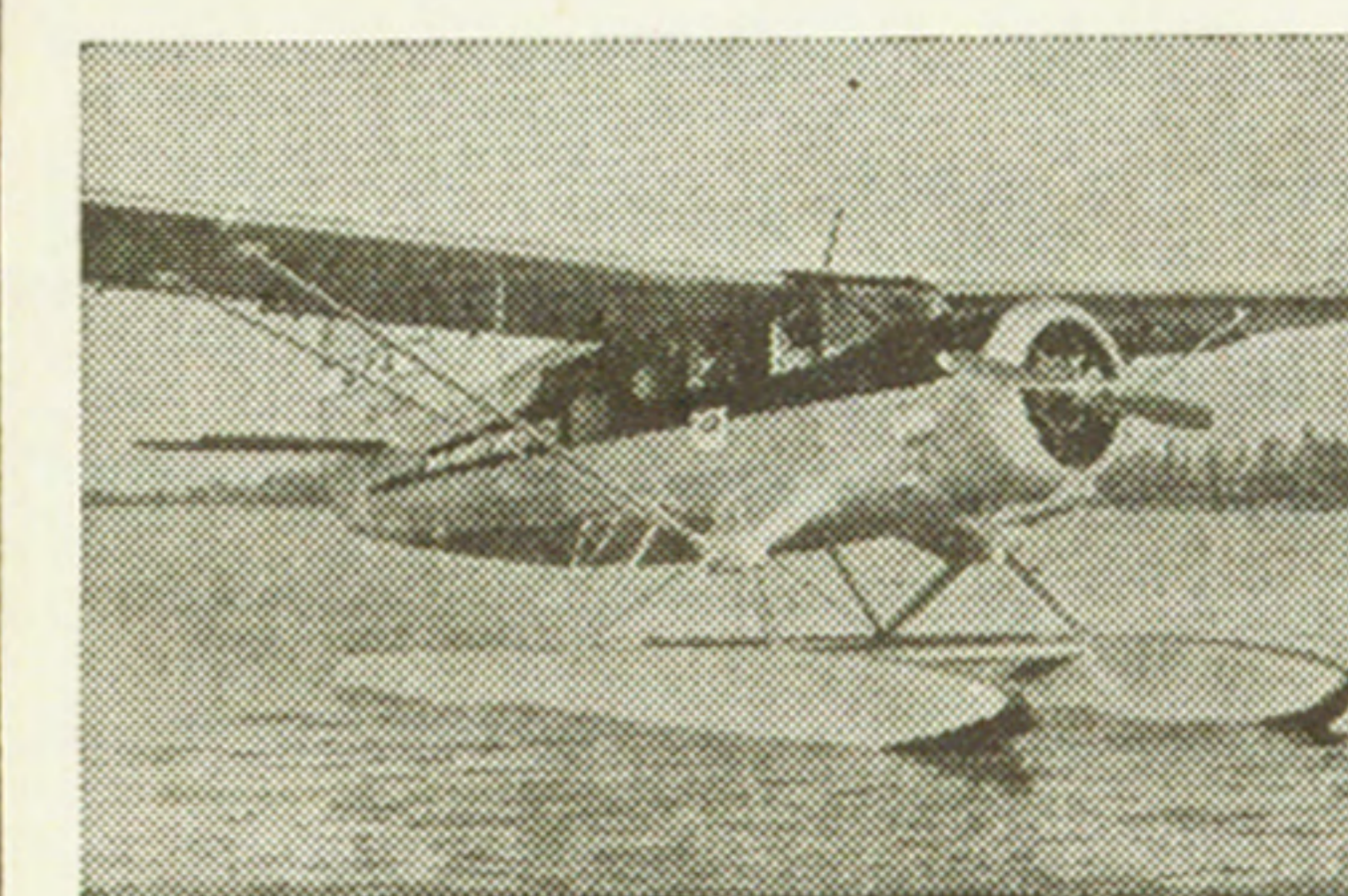
Read Down Read Up

53*	Monday and Thursday	54*
9.00	Lv. Prince Rupert	Ar.
10.00	Ar. Alice Arm	Lv.
10.15	Lv. Alice Arm	Ar.
11.05	Ar. Stewart	Lv.
	1.25	
	12.25	
	12.10	
	11.20	

* These points are served on a non-scheduled basis. Days, dates and times are subject to change or cancellation without notice.

ONE-WAY FARES AND SHIPPING CHARGES

Northern Division	Prince Rupert	Alice Arm	Stewart	Kitimat	Kemano
Prince Rupert	● ●	\$20.00	\$25.00	\$20.00	\$24.00
Alice Arm	.10	● ●			
Stewart	.13		● ●		
Kitimat	.10			● ●	
Kemano	.12				● ●



Seaplanes

Norseman seaplanes built for Northern flying, operate from Q.C.A.'s Prince Rupert base.



Charters

Cut costs and travelling time — inquire about Q.C.A.'s charter service. Fully equipped aircraft and trained crews available.

● Round Trip Fares Double One Way Less 10%. ● Shipping Charges in cents per pound Minimum shipment \$1.00