

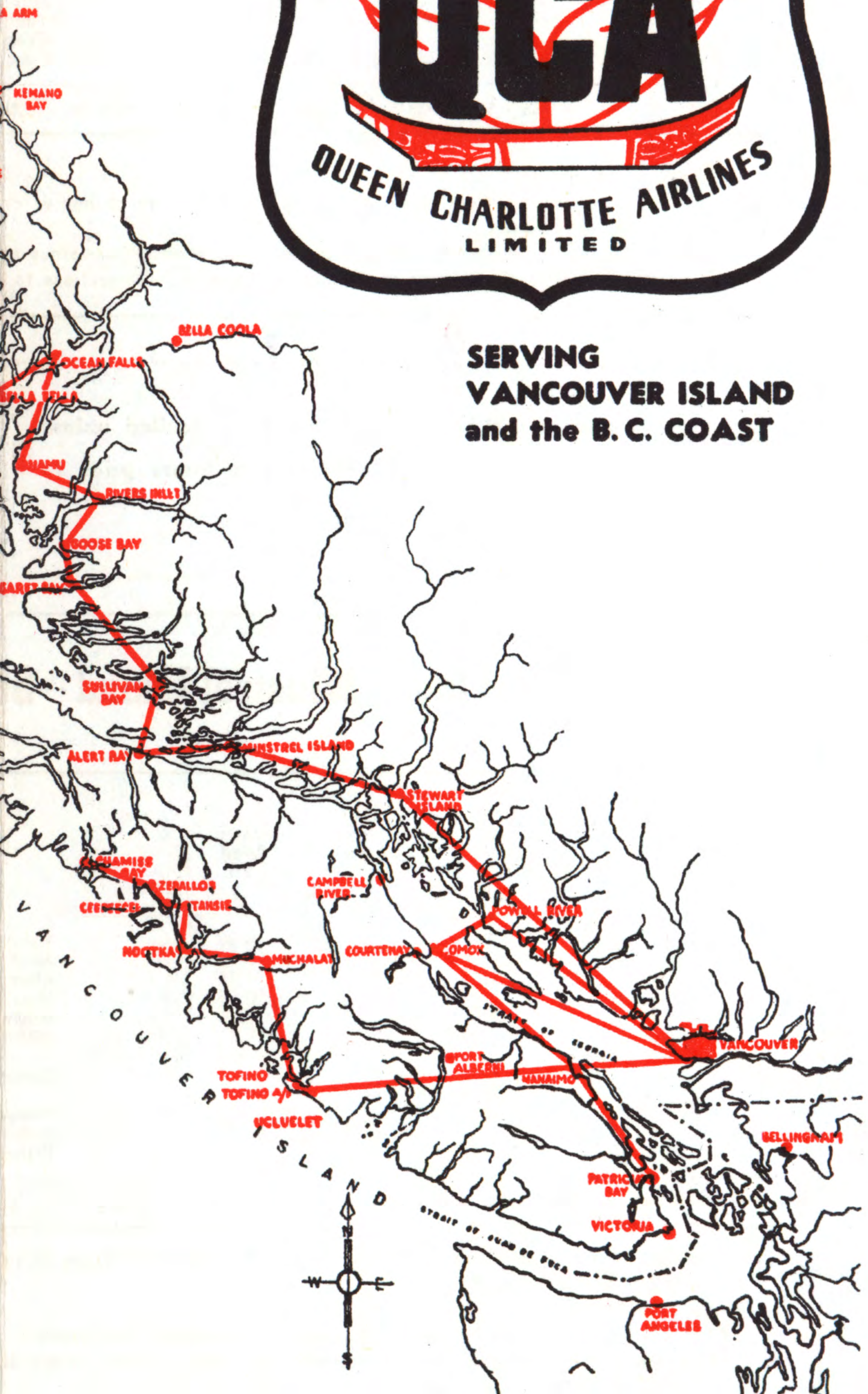
EFFECTIVE

NOV. 1, 1953

Fly



**SERVING
VANCOUVER ISLAND
and the B. C. COAST**



Authorized by the Air Transport Board of Canada to operate Scheduled, Non-scheduled and Charter Services.



The Canso

Designed to operate from land or water, Q.C.A.'s Canso Amphibians carry passengers, freight and mail to coastal points. Flight stewards in attendance serve light refreshments en route adding to the pleasure of your trip.

GENERAL INFORMATION

BAGGAGE will be carried on any full fare ticket up to a maximum of 40 pounds or any half fare up to 20 pounds. Baggage or other personal property in excess of limitation will be charged for at current rates. Excess baggage will be accepted subject to aircraft weight and space limitations.

LIABILITY of the carrier for loss of, or damage to, or any delay in the delivery of personal property, including baggage, is limited to the amount of \$50.00 per ticket.

FARES and other information published herein are subject to Tariff regulations and change without notice. Current tariffs are maintained in all ticket offices of the Company, and are open to public inspection.

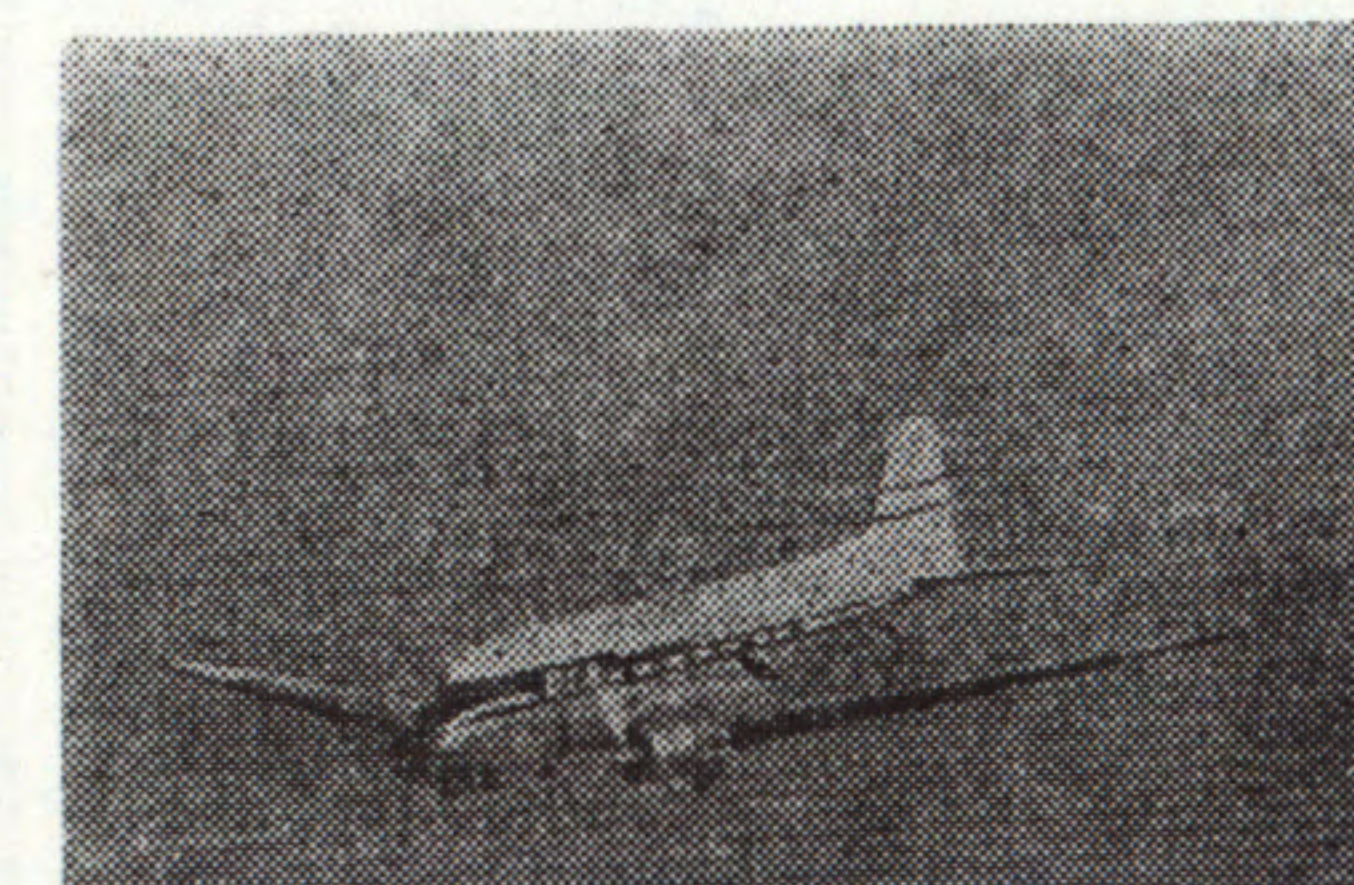
CHILDREN under two years of age for whom seats are reserved and children two years of age and under twelve years of age, will be charged one-half of the full normal adult fare. ONE child under two years of age and not occupying a seat, will be carried free with each adult fare.

LIMITS AND STOPOVERS—Tickets are valid for a period of one month from date of issue. Tickets are non-transferable. Stopovers are permitted at any point en route within the limits of the ticket in accordance with Company Tariffs.

LIQUOR—Any passenger considered to be under the influence of liquor will be refused passage, and any passenger considered to be so affected en route will be deplaned.

GROUND TRANSPORTATION — Limousine services are not operated by Q.C.A., and are therefore at passengers' option.

RESERVATIONS must be made in advance and tickets purchased within time limits specified by the Company.



DC-3

The world's most familiar aircraft on commercial flight routes, successfully proven by millions of miles of air travel.



Your Crew

Captain, First Officer and Stewardess — A trained team to ensure a pleasant flight.



QUEEN CHARLOTTE AIRLINES LIMITED



AIRPORT TRAFFIC OFFICE

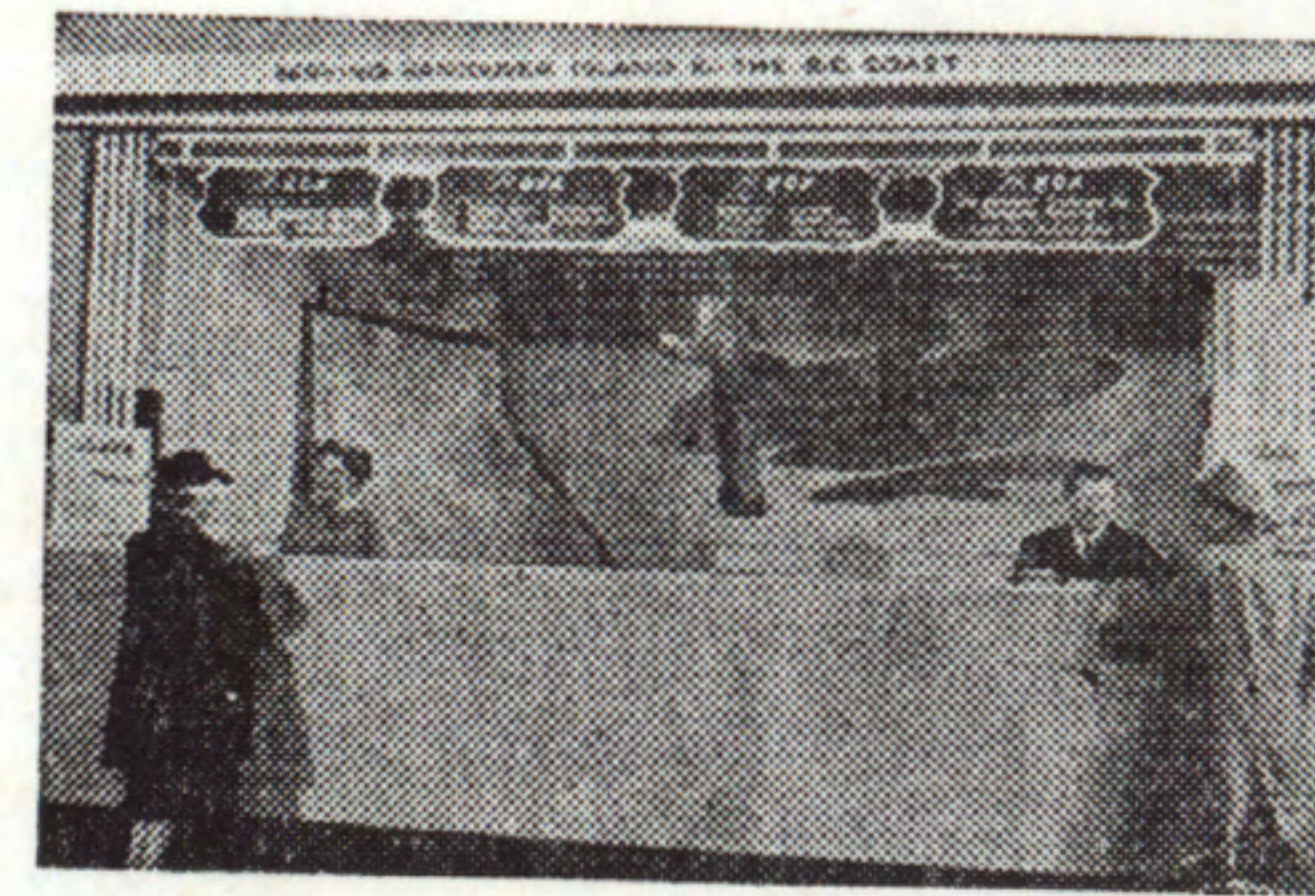
Vancouver, A. M. F., B. C.
For information, reservations, timetables, or air shipment rates, etc., phone

KErrisdale 6611

VANCOUVER CITY TICKET OFFICE

1023 W. Georgia St. . . . Terminal for limousine service to Airport. For information, air shipment rates, timetables, etc., phone

Pacific 8726



AGENTS AND TICKET OFFICES

SOUTHERN DIVISION

Point	Agent	Phone
ALERT BAY	Mrs. E. M. Kenmuir	
BEAVER COVE	W. J. Daum	
BLIND CHANNEL	S. Boardman	
CAMPBELL RIVER	Q.C.A.	61-R3
COMOX AIRPORT	Courtenay-Comox Travel Service	555
COURTENAY	City Transfer	
CRANBERRY LAKE	Kyle Taxi	103
DUNCAN	E. Trollope	
MINSTREL ISLAND	Hertz U-Drive	2589
NANAIMO	Q.C.A.	1975 & 619-L-2
NANAIMO AIRPORT	Mrs. R. Kunderman	
OCEAN FALLS	Turner Bros.	
PORT ALBERNI	Tyce Bus Co. Ltd.	830
PORT McNEIL	J. C. McCallum	
POWELL RIVER	Hopper & Jamieson, Q.C.A.	3911
POWELL RIVER AIRPORT	Q.C.A.	2289
QUALICUM BEACH	H. C. Good	2681
REFUGE COVE	D. Hope	
SEYMOUR INLET	Oskar Johnson	
SIMOOM SOUND	Mrs. D. Sutherland	
SOINTULA	P. A. Hilton	14-L
STUART ISLAND	V. B. Willcock	
SULLIVAN BAY	Mrs. B. Collinson	
THURLOW		
TOFINO	Ian McLorie	Empire 6321
VICTORIA	C & C Transportation Co.	2255
WESTVIEW	Powell River News	
ZEBALLOS	Lloyd Crabbe	

NORTHERN DIVISION

ALICE ARM	Mrs. C. E. Carlson	
KETCHIKAN	Ellis Airlines	
PRINCE RUPERT	Q.C.A., Crawford Moore Travel Agencies	476
STEWART	J. McKay	

PRINTED IN CANADA

QUEEN CHARLOTTE AIRLINES LIMITED
VANCOUVER, A. M. F., B. C.



**EFFECTIVE
NOV. 1, 1953**



SERVING
VANCOUVER ISLAND
and the B. C. COAST

Authorized by the Air Transport Board of Canada to operate Scheduled, Non-scheduled and Charter Services.

Vancouver - Nanaimo - Tofino and West Coast of Vancouver Island

Read Down				Read Up			
19 Daily Ex. Sun.	41 Tues. Thurs. Sat.	35 Tues. Thurs. Sat.	37 Tues. Thurs. Sat.▲	38 Tues. Thurs. Sat.▲	36 Tues. Thurs. Sat.	42 Tues. Thurs. Sat.	20 Daily Ex. Sun.
10.15 10.35	11.30 11.50		9.30	5.30		2.30 2.10	11.00 10.40
	f11.55 12.45	1.30 f 2.30 3.15	11.00 11.40	f f f 3.30	12.35 11.55	f2.05 1.15	
DC3	DC3	Canso	Canso	Aircraft	Canso	DC3	DC3

f Conditional stop.
 * Non-scheduled services. Days, dates and times are subject to change or cancellation without notice.
 ▲ Light refreshments served.
 Nanaimo Airport—Limousine Service to Nanaimo, Ladysmith, Chemainus and Duncan.
 Tofino Airport—Limousine service to Tofino and Ucluelet. Connections to Muchalat, Tahsis, Zeballos, Chamiss Bay and Nanaimo.

Important Delays

Reservations for Return Flights will be cancelled unless re-confirmed by passengers at least 3 hours prior to flight departure.

To reduce delays passengers are requested to observe the following airport check-in times:
 ● For ticketed passengers — 20 minutes.
 ● For unticketed passengers — 30 minutes.
 All flights will be closed off 10 mins. prior to departure.

Vancouver - Alert Bay - Minstrel Island - Sullivan Bay - Ocean Falls - Kemano - Kitimat

Read Down			Read Up		
101 Tues. Thurs. Sat.▲	211 Ocean Falls	3 Mon. Wed. Fri.▲	4 Mon. Wed. Fri.▲	212 Ocean Falls	102 Tues. Thurs. Sat.▲
8.30		8.30 10.20 10.35 10.55 11.10 11.30	Lv. Vancouver Ar. Alert Bay Lv. Alert Bay Ar. Minstrel Island Lv. Minstrel Island Ar. Sullivan Bay	4.30 2.40 2.25 f f 1.30	5.15
f f 12.15			Ar. Ocean Falls Lv. Ocean Falls		f f 1.30
Canso	Canso	Canso	Aircraft	Canso	Canso

* Non-scheduled services. Days, dates and times are subject to change or cancellation without notice.
 ▲ Light refreshments served.
 f Conditional stop.
 Alert Bay—Local water taxi service available to Englewood, Port McNeil, Sointula.
 Sullivan Bay—Connecting air service available to Simoom Sound and the Seymour - Belize Inlet areas.
 ** Ocean Falls service discontinued for winter months.

Vancouver - Comox - Powell River

Read Down		Read Up	
5 Daily Ex. Sun.	9 Daily	6 Daily Ex. Sun.	10 Daily
7.15 8.05 8.10 8.30	3.00 3.50 3.55 4.15	Lv. Vancouver Ar. *Comox Lv. Comox Ar. Powell River	Ar. 9.55 Lv. 9.05 Ar. 9.00 Lv. 8.40
			5.55 5.00 4.45 4.25

*Connecting Air Service to Knight Inlet, Refuge Cove, Cortez Island, Forbes Bay, Homfray Creek, Stuart Island, Toba Inlet, Bute Inlet, Thurlow, Rock Bay, Camp Point, Forward Harbour, Loughborough Inlet, Heydon Bay, Fraser Bay, Port Neville and Savary Island.
 Comox Airport—Limousine Service available to Courtenay, Comox and Campbell River.
 Powell River—Limousine Service available to Powell River and Westview.

Zeballos - Port Alberni

Read Down		Read Up	
31 Mon., Fri.		32 Mon., Fri.	
10.00 f f f f f f 11.30	Lv. Zeballos Chamiss Bay Ceepeecee Tahsis Nootka Muchalat Sidney Inlet Tofino Port Alberni	Ar. 4.00 f f f f f f 2.30	

f Denotes conditional stop.
 Above points are served on a non-scheduled basis. Days, dates and times are subject to change or cancellation without notice.

NORTHERN DIVISION

PRINCE RUPERT — KITIMAT — KEMANO ALICE ARM — STEWART — KETCHIKAN

Read Down			Read Up		
51 Tues. Thurs. Fri.	53 Thurs.	57 *	58 *	54 Thurs.	52 Tues. Thurs. Fri.
1.00	9.00			1.25	3.10
f f 1.50	f f 10.00 10.15 11.05	Lv. Prince Rupert Ar. Kitimat Lv. Kitimat Ar. Kitimat Lv. Kitimat Ar. Kitimat	Ar. 1.25 Lv. 1.25 Ar. 1.25 Lv. 1.25 Ar. 1.25 Lv. 1.25	f f 12.25 12.10 11.20	f f 2.30

f Denotes conditional stop.
 Above points are served on a non-scheduled basis. Days, dates and times are subject to change or cancellation without notice.
 * Discontinued for winter months.

ONE-WAY FARES AND SHIPPING CHARGES

	Vancouver	Alert Bay	Sullivan Bay	Minstrel Island	Ocean Falls	Kitimat	Kemano	Kildala
Vancouver	• •	25.00	25.00	25.00	42.00	49.00	47.00	48.00
Alert Bay	.12	• •	10.00	13.50				
Sullivan Bay	.12	.05	• •	13.50				
Minstrel Isl.	.12	.07	.07	• •				
Ocean Falls	.21				• •			
Kitimat	.25					• •	10.00	
Kemano	.24						• •	
Kildala	.24							• •

WEST COAST OF VANCOUVER ISL.	Vancouver	Nanaimo	Tofino	Muchalat	Tahsis	Zeballos	Chamiss Bay
Vancouver	• •	4.60	15.50	29.75	30.00	30.00	33.75
Nanaimo	.03	• •	14.40	25.50	29.75	29.75	30.00
Tofino	.08	.07	• •	13.50	18.00	18.00	22.50
Muchalat	.15	.13	.07	• •	10.00	10.00	13.50
Tahsis	.15	.15	.09	.05	• •	10.00	10.00
Zeballos	.15	.15	.09	.05	.05	• •	10.00
Chamiss Bay	.17	.17	.11	.07	.05	.05	• •

LOCAL WEST COAST FARES	Zeballos	Nootka	Ceepeecee	Sidney Inlet	Port Alberni
Zeballos	• •	10.00	10.00	13.50	22.50
Nootka	.07	• •	10.00	10.00	18.00
Ceepeecee	.05	.05	• •	13.50	22.50
Sidney Inlet	.07	.05	.07	• •	13.50
Port Alberni	.11	.09	.11	.07	• •

INTER-CITY FLIGHTS	Vancouver	Nanaimo	Comox	Powell River
Vancouver	• •	4.60	8.90	19.50
Nanaimo	.03	• •	• •	19.50
Comox	.05	• •	• •	15.25
Powell River	.05	.05	.03	• •

NORTHERN DIVISION	Prince Rupert	Alice Arm	Stewart	Kitimat	Kemano	Ketchikan
Prince Rupert	• •	20.00	25.00	20.00	24.00	15.00
Alice Arm	.10	• •	10.00			
Stewart	.13	.05	• •			
Kitimat	.10			• •	10.00	
Kemano	.12				• •	
Ketchikan	.08					• •

Fares not shown will be determined by combining local fares dependent on routing desired.
 Round Trip Fares are Double One Way Less 10%.
 †Airport Tax additional.