

## Spring/Summer 2004

Effective April 18, 2004

**Halifax**

**Gander**



**Ottawa**

**Thunder Bay**

**London**

**Prince George**

**Windsor**

**Winnipeg**

**Grande Prairie**

**Saskatoon**

**Calgary**

**Kelowna**

**Moncton**

**Edmonton**

**Comox**

**Toronto**

**Victoria**

**Regina**

**Hamilton**

**Fort McMurray**

**Abbotsford**

**Vancouver**

**Montréal**

**St. John's**

## Printemps/Été 2004

En vigueur le 18 avril 2004

CALL YOUR TRAVEL AGENT  
OR BOOK ONLINE AT

**westjet.com**

OR CALL WESTJET  
AT 1.800.538.5696

APPELEZ VOTRE AGENT DE VOYAGES, RÉSERVEZ EN LIGNE,  
OU APPELEZ WESTJET AU 1.877.956.6982



## Leave the rat race behind.

We're Canada's number one car rental company. And we've got the experience, the vehicles, and the deals to make any escape a memorable one. No matter the destination, we'll get you there – safely, comfortably, and in style. Getting away has never been this easy. Or this fun.

BIGGEST FLEET • MOST LOCATIONS • NUMBER ONE IN CANADA ✦



For reservations, call 1 888 310.8855  
or book online at [westjet.com](http://westjet.com).

**WESTJET**  
[westjet.com](http://westjet.com)

**Fastbreak**  
EXPRESS SERVICE EXPRESS

**Budget**  
[www.budget.com](http://www.budget.com)

Preferred car and truck rental partner of WestJet.

The Budget logo is a registered trademark of Budget Rent A Car of Canada Ltd. © 2004 Budget Rent A Car System, Inc.

**WESTJET**

## Spring/Summer 2004

Effective April 18, 2004

**Halifax**



**Gander**

**Ottawa**

**Thunder Bay**

**London**

**Prince George**

**Windsor**

**Winnipeg**

**Grande Prairie**

**Saskatoon**

**Calgary**

**Kelowna**

**Moncton**

**Edmonton**

**Comox**

**Toronto**

**Victoria**

**Regina**

**Hamilton**

**Fort McMurray**

**Abbotsford**

**Vancouver**

**Montréal**

**St. John's**

## Printemps/Été 2004

En vigueur le 18 avril 2004

CALL YOUR TRAVEL AGENT  
OR BOOK ONLINE AT

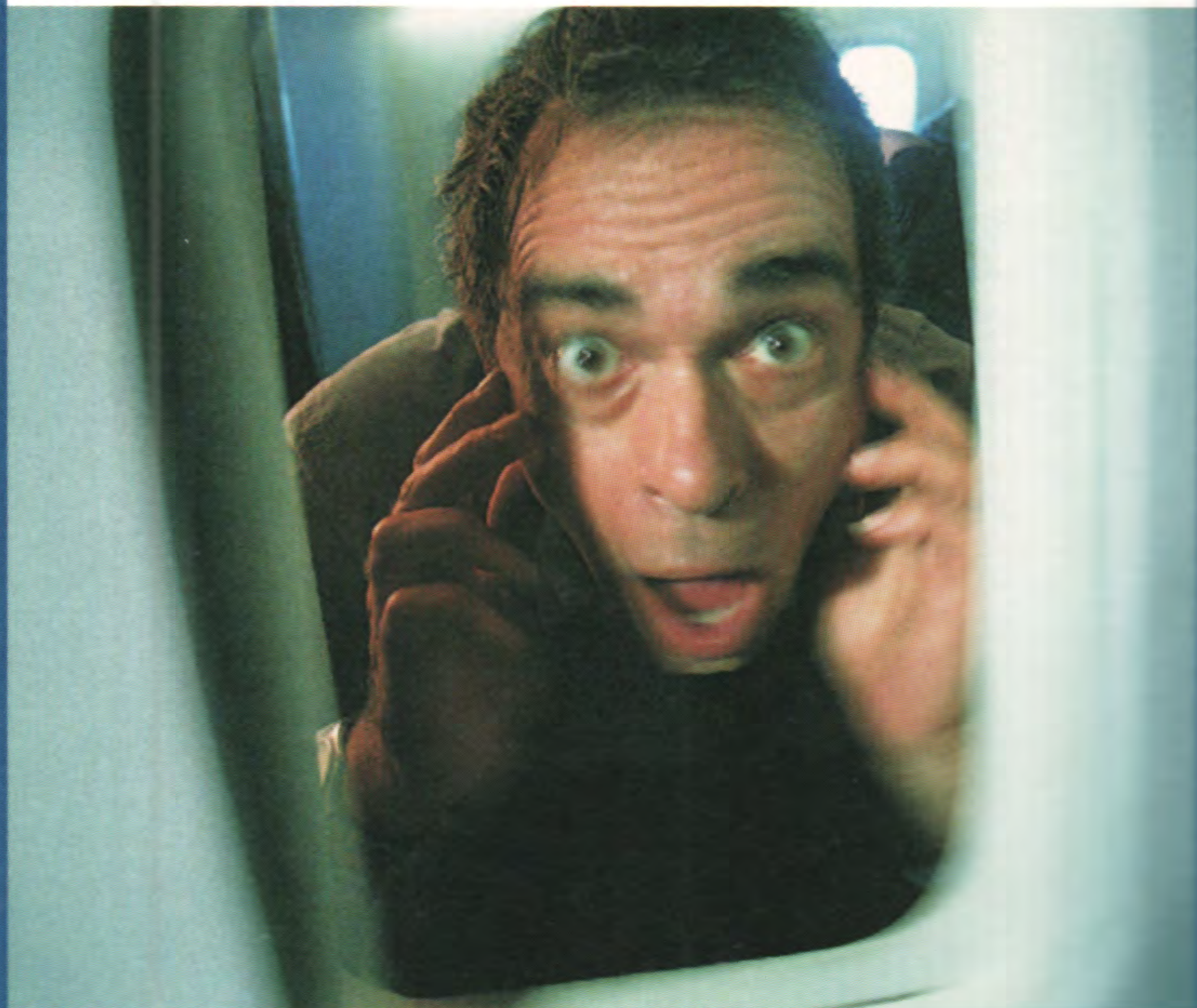
**westjet.com**

OR CALL WESTJET  
AT 1.800.538.5696

APPELEZ VOTRE AGENT DE VOYAGES, RÉSERVEZ EN LIGNE,  
OU APPELEZ WESTJET AU 1.877.956.6982



Still looking for a great hotel value?



Three reasons why WestJet travellers stay with Travelodge

**1**  
Great Room Rates

And, always enjoy value added extras\*

**2**  
Travelodge Guest Rewards  
Always rewarding

Earn points towards great gift certificates\*

**3**  
Hbc Rewards

Receive bonus points with every stay†

**Travelodge**  
Inns ~ Hotels ~ Suites

Travelodge Reservations:  
**1-800-578-7878**  
www.travelodge.ca

**Thriftlodge**

Thriftlodge reservations: 1-800-525-9055

TRAVELODGE IS A PROUD PARTNER OF WESTJET

†Hbc Rewards is a trade-mark of Hudson's Bay Company, used under license. Earn Hbc Rewards bonus points on published rates only.  
\*Special amenities including free in-room coffee, weekday lobby newspaper, cable TV and no long distance access charges available only at Travelodge® locations; not available at Thriftlodge® locations. Weekday newspaper available in lobby, while supplies last. To qualify for Travelodge Guest Rewards, guests must pay a published rate or higher. Ten Guest Rewards points are awarded for each lodging dollar spent, not for dollars spent on incidentals or taxes. The Travelodge Guest Rewards Program rules, rewards and point levels are subject to change at any time without notice. See the Official Rules for complete details. \*\*© WestJet 2004. All rights reserved. © 2004 Travelodge Hotels, Inc. 04-076

## Airport Codes/Cities Indicatifs des aéroports et des villes

YXX - Abbotsford (BC)	YHM - Hamilton (ON)	YXE - Saskatoon (SK)
YYC - Calgary (AB)	YLW - Kelowna (BC)	YYT - St. John's (NF)
YQQ - Comox (BC)	YXU - London (ON)	YQT - Thunder Bay (ON)
YEG - Edmonton (AB)	YQM - Moncton (NB)	YYZ - Toronto (ON)
YMM - Fort McMurray (AB)	YUL - Montréal (PQ)	YVR - Vancouver (BC)
YQX - Gander (NF)	YOW - Ottawa (ON)	YYJ - Victoria (BC)
YQU - Grande Prairie (AB)	YXS - Prince George (BC)	YQG - Windsor (ON)
YHZ - Halifax (NS)	YQR - Regina (SK)	YWG - Winnipeg (MB)

Please refer to these letter codes for the effective dates for new service / Veuillez vous reporter aux codes pour connaître les dates d'entrée en vigueur des nouvelles dessertes.

A: Effective May 1, 2004	A: En vigueur à compter du 1 mai 2004
B: Effective June 15, 2004	B: En vigueur à compter du 15 juin 2004
C: Effective June 26, 2004	C: En vigueur à compter du 26 juin 2004
D: Effective June 26 - September 30, 2004	D: En vigueur du 26 juin au 30 septembre 2004
E: Effective July 5, 2004	E: En vigueur à compter du 5 juillet 2004
F: Effective July 5 - September 12, 2004	F: En vigueur du 5 juillet au 12 septembre 2004

CNX denotes Connection • N/S denotes Non-stop • +1 denotes arrival following day  
2CNX denotes 2 connection points • CNX/# denotes connection and number of stops

CNX - Correspondance • N/S - Vol sans escale • +1 Arrivée le lendemain  
2CNX - 2 points de correspondance • CNX/# - correspondance et nombre d'escales

Schedule is subject to change without notice.

L'horaire peut être modifié sans préavis.

WestJet's free baggage allowance consists of 2 pieces of checked baggage per person, each piece not to exceed 32 kg (70 lbs.) and 2 pieces of carry on baggage, each piece not to exceed 10 kg (22 lbs.). Both pieces must fit together simultaneously in the sizing device.

Call your travel agent or WestJet at: **1-800-538-5696**

Book online at: [westjet.com](http://westjet.com)

(403) 219-7523 or 1-877-952-0100

La franchise de bagages de WestJet consiste en 2 bagages enregistrés par personne, chaque article ne devant pas dépasser un poids de 32 kg (70 lb), et en 2 bagages à main, chaque article ne devant pas dépasser 10 kg (22 lb). Les 2 bagages doivent pouvoir entrer dans le dispositif de dimensionnement en même temps.

Appelez votre agent de voyages ou WestJet au **1 (877) 956-6982**

Faites vos réservations en ligne à [westjet.com](http://westjet.com)

(403) 219-7523 ou 1 (877) 952-0100

Group it up on Canada's low-fare airline  
and save even more!

- Specialized agents.
- Direct toll-free phone and fax numbers.
- Customized fares and itineraries.
- Special group luggage tags.
- Fares and guaranteed after deposits have been made.

Next time you're arranging a trip for 10 or more guests for a family reunion, business meeting, school trip, sporting event, or any reason at all, just call WestJet.

Call your travel agent or the WestJet Specialty Sales Team at:

**1.888.493.7853**  
or in Calgary 444-2294





# Abbotsford to/à:

	FLIGHT NO./ NO DE VOL	DÉPARTS/ DEPART	ARRIVÉS/ ARRIVÉE	STOPS/ ARRÊT	*DAYS/ JOURS	
CALGARY	WS28	6:35AM	8:45AM	N/S	1 2 3 4 5 ..	
	WS564	7:00AM	9:10AM	N/S	.....7	
	WS435	7:10AM	9:20AM	N/S	.....6.	
	WS34	9:30AM	11:40AM	N/S	1 2 3 4 5 ..	
	WS20	9:45AM	11:55AM	N/S	.....7	
	WS64	11:10AM	2:38PM	1 STOP	.....7	
	WS450	12:40PM	2:50PM	N/S	1 2 3 4 5 ..	
	WS440	3:50PM	6:00PM	N/S	1 2 3 4 5 ..	
	WS440	3:55PM	6:05PM	N/S	.....7	
	WS236	4:35PM	6:45PM	N/S	.....6.	
	WS178	4:55PM	7:05PM	N/S	1 2 3 4 5 ..	
	WS103	6:05PM	8:15PM	N/S	.....7	
	WS482	7:30PM	9:40PM	N/S	1 2 3 4 5 ..	
	EDMONTON	WS34	9:30AM	12:55PM	1 STOP	1 2 3 4 5 ..
		WS64	11:10AM	1:30PM	N/S	.....7
WS450/240		12:40PM	4:45PM	CNX	1 2 3 4 5 ..	
WS38		12:45PM	3:05PM	N/S	.....6.	
WS440/66		3:55PM	8:50PM	CNX	.....7	
WS236		4:35PM	7:55PM	1 STOP	.....6.	
WS103		6:05PM	9:35PM	1 STOP	.....7	
WS482		7:30PM	10:55PM	1 STOP	1 2 3 4 5 ..	
FORT MCMURRAY		WS34/86	9:30AM	4:45PM	CNX/1	...4...
	WS450/29	12:40PM	7:05PM	CNX/1	1 2 3 4 5 ..	
	WS103	6:05PM	10:50PM	2 STOPS	.....7	
GANDER	WS28/650/798	6:35AM	9:40PM	2CNX/1	1.3.5..	
GRANDE PRAIRIE	WS34	9:30AM	2:13PM	2 STOPS	1 2 3 4 5 ..	
	WS64/115	11:10AM	4:58PM	CNX	.....7	
HALIFAX	WS28/650/798	6:35AM	7:20PM	2CNX	1 2 3 4 5 ..	
	WS564/650	7:00AM	7:20PM	CNX/1	.....7	
	WS435/798	7:10AM	7:20PM	CNX/1	.....6.	
	D WS34/822	9:30AM	7:45PM	CNX	1 2 3 4 5 ..	
	WS103/652/546	6:05PM	2:05PM+1	2CNX/1	.....7	
WS482/652/546	7:30PM	2:05PM+1	2CNX/1	1.3.4...		
WS482/652/546	7:30PM	2:15PM+1	2CNX/1	.....5..		
HAMILTON	WS435	7:10AM	4:30PM	2 STOPS	.....6.	
	WS34/554	9:30AM	6:40PM	CNX	1 2 3 4 5 ..	
	WS20/554	9:45AM	6:40PM	CNX	.....7	
LONDON	WS564/117/300	7:00AM	4:13PM	2CNX	.....7	
	WS34/561	9:30AM	8:15PM	CNX	1.3.5..	
	WS64/561	11:10AM	9:15PM	CNX/1	.....7	
MONCTON	WS435/668	7:10AM	9:45PM	CNX/1	.....6.	
	F WS34/828	9:30AM	8:25PM	CNX	1.3.5..	
	WS34/668	9:30AM	9:45PM	CNX/1	1 2 3 4 5 ..	
	WS20/668	9:45AM	9:45PM	CNX/1	.....7	
MONTREAL	WS435/798/654	7:10AM	5:45PM	2CNX	.....6.	
	WS34/668	9:30AM	6:57PM	CNX	1 2 3 4 5 ..	
	WS20/668	9:45AM	6:57PM	CNX	.....7	
	WS103/652/660	6:05PM	9:10AM+1	2CNX	.....7	
	WS482/652/660	7:30PM	9:10AM+1	2CNX	1.3.4.5..	
OTTAWA	WS28/540	6:35AM	4:05PM	CNX	1 2 3 4 5 ..	
	WS564/540	7:00AM	4:05PM	CNX	.....7	
	WS435/540	7:10AM	4:05PM	CNX	.....6.	
	WS34/661	9:30AM	8:35PM	CNX/1	1 2 3 4 5 ..	
	WS20/661	9:45AM	8:35PM	CNX/1	.....7	
	WS103/652/583	6:05PM	8:05AM+1	2CNX	.....7	
	WS482/652/693	7:30PM	8:00AM+1	2CNX	.....5..	
	WS482/652/583	7:30PM	8:05AM+1	2CNX	1.3.4.5..	
REGINA	WS28/210	6:35AM	12:58PM	CNX	1 2 3 4 5 ..	
	WS435/126	7:10AM	11:03AM	CNX	.....6.	
	WS20	9:45AM	1:38PM	1 STOP	.....7	
	WS440/256	3:50PM	8:13PM	CNX	1 2 3 4 5 ..	
	WS440	3:55PM	7:43PM	1 STOP	.....7	
	WS178/278	4:55PM	10:18PM	CNX	.....5..	
	WS178/356	4:55PM	10:22PM	CNX	1 2 3 4 ..	
WS103/302	6:05PM	10:42PM	CNX	.....7		

Continued on next page • Page suivante

\*Monday/lundi=1, Tuesday/mardi=2, Wednesday/mercredi=3, Thursday/jeudi=4, Friday/vendredi=5, Saturday/samedi=6, Sunday/dimanche=7



Allstream is a leading communication solutions provider with a world-class portfolio of connectivity, infrastructure management and IT services. We understand that the continuous flow of information that travels through your network is more than just data and voice – it's the value people create. That's why we're committed to being an innovative, agile partner to our customers, working with them in collaboration to deliver tailored business solutions that will help them compete more effectively. This goes beyond a philosophy. It is our promise. To find out more about **Allstream**, visit us at [www.allstream.com](http://www.allstream.com)



# Abbotsford to/à: continued/suite

	FLIGHT NO./ NO DE VOL	DÉPARTS/ DEPART	ARRIVES/ ARRIVEE	STOPS/ ARRÊT	*DAYS/ JOURS	
SASKATOON	WS28	6:35AM	10:23AM	1 STOP	1 2 3 4 5 ..	
	WS564/67	7:00AM	11:28AM	CNX	.....7	
	WS435/51	7:10AM	10:53AM	CNX	.....6..	
	WS34/454	9:30AM	2:08PM	CNX	1 2 3 4 5 ..	
	WS20/716	9:45AM	1:58PM	CNX	.....7	
	WS440/85	3:55PM	8:03PM	CNX	.....7	
	WS178	4:55PM	8:38PM	1 STOP	1 2 3 4 5 ..	
	WS103/98	6:05PM	11:13PM	CNX	.....7	
	ST. JOHN'S	WS28/650/798	6:35AM	9:45PM	2CNX/1	. 2 . 4 ..
		WS564/650	7:00AM	9:45PM	CNX/2	.....7
WS435/798		7:10AM	9:45PM	CNX/2	.....6..	
F WS34/826		9:30AM	9:10PM	CNX	. 2 . 4 ..	
F WS20/826		9:45AM	9:10PM	CNX	.....7	
THUNDER BAY	WS28/732	6:35AM	2:53PM	CNX/1	1 2 3 4 5 ..	
	WS564/679	7:00AM	2:30PM	CNX	.....7	
	WS435	7:10AM	2:30PM	1 STOP	.....6..	
TORONTO	WS28/650	6:35AM	3:50PM	CNX	1 2 3 4 5 ..	
	WS564/650	7:00AM	3:50PM	CNX	.....7	
	WS435/798	7:10AM	3:45PM	CNX	.....6..	
	WS34/661	9:30AM	6:50PM	CNX	1 2 3 4 5 ..	
	WS20/661	9:45AM	6:50PM	CNX	.....7	
	WS64/604	11:10AM	9:05PM	CNX/1	.....7	
	WS450/664	12:40PM	10:15PM	CNX	1 2 3 4 5 ..	
	WS38/656	12:45PM	10:45PM	CNX	.....6..	
	WS103/652	6:05PM	6:35AM+1	CNX	.....7	
	WS482/652	7:30PM	6:35AM+1	CNX	1 . 3 4 5 ..	
WINDSOR	WS435/706	7:10AM	9:00PM	CNX	.....6..	
	WS34/706	9:30AM	8:10PM	CNX	. 2 . 4 ..	
WINNIPEG	WS28/732	6:35AM	12:15PM	CNX	1 2 3 4 5 ..	
	WS564/117	7:00AM	12:40PM	CNX	.....7	
	WS435/572	7:10AM	1:45PM	CNX	.....6..	
	WS34/404	9:30AM	4:05PM	CNX	1 2 3 4 5 ..	
	WS64/510	11:10AM	7:35PM	CNX/1	.....7	
	WS38	12:45PM	6:18PM	1 STOP	.....6..	
	WS440/212	3:50PM	10:10PM	CNX	1 2 3 . 5 ..	
	WS178/278	4:55PM	11:55PM	CNX	....4....	
WS103/278	6:05PM	11:54PM	CNX	.....7		

\*Monday/lundi=1, Tuesday/mardi=2, Wednesday/mercredi=3, Thursday/jeudi=4, Friday/vendredi=5, Saturday/samedi=6, Sunday/dimanche=7

# The cheapest call you never made.



Save \$6 when you book online.

737 ALL-JET SERVICE | NO CHARGE FOR SNACKS

CAR AND HOTEL BOOKINGS AT WESTJET.COM

CALL YOUR TRAVEL AGENT OR WESTJET 1.800.538.5696

BOOK ONLINE  
**\$6**  
AND SAVE

**WESTJET**  
Value in Canada's skies

# Calgary to/à:

	FLIGHT NO./ NO DE VOL	DÉPARTS/ DEPART	ARRIVES/ ARRIVEE	STOPS/ ARRÊT	*DAYS/ JOURS	
ABBOTSFORD	WS409	8:40AM	9:00AM	N/S	1 2 3 4 5 ..	
	WS75	9:00AM	9:20AM	N/S	.....7	
	WS63	10:20AM	10:40AM	N/S	.....7	
	WS83	11:50AM	12:10PM	N/S	1 2 3 4 5 ..	
	WS83	11:55AM	12:15PM	N/S	.....6..	
	WS439	3:00PM	3:20PM	N/S	1 2 3 4 5 ..	
	WS101	3:05PM	3:25PM	N/S	.....7	
	WS84	3:45PM	4:05PM	N/S	.....6..	
	WS96	4:00PM	4:20PM	N/S	1 2 3 4 5 ..	
	WS593	5:15PM	5:35PM	N/S	.....7	
	WS149	6:40PM	7:00PM	N/S	.....6..	
	WS467	6:40PM	7:00PM	N/S	1 2 3 4 5 ..	
	WS144	10:00PM	10:20PM	N/S	1 2 3 4 5 ..	
	WS49	10:10PM	10:30PM	N/S	.....7	
	COMOX	WS151	9:10AM	9:40AM	N/S	1 2 3 4 5 ..
WS145		10:00AM	10:30AM	N/S	.....6..	
WS289		10:15AM	10:45AM	N/S	.....7	
WS150		2:15PM	2:45PM	N/S	.....7	
WS384		4:25PM	4:55PM	N/S	.....6..	
WS271		6:20PM	6:50PM	N/S	.....5..	
EDMONTON		WS140	6:20AM	7:05AM	N/S	1 2 3 4 ..
	WS39	8:00AM	8:45AM	N/S	1 2 3 4 5 ..	
	WS34	12:10PM	12:55PM	N/S	1 2 3 4 5 ..	
	WS148	1:45PM	2:30PM	N/S	.....6..	
	WS115	2:50PM	3:35PM	N/S	.....7	
	WS240	4:00PM	4:45PM	N/S	1 2 3 4 5 ..	
	WS29	5:05PM	5:50PM	N/S	1 2 3 4 5 ..	
	WS146	6:05PM	6:50PM	N/S	.....7	
	WS236	7:10PM	7:55PM	N/S	.....6..	
	WS66	8:05PM	8:50PM	N/S	.....7	
	WS103	8:50PM	9:35PM	N/S	.....7	
	WS482	10:10PM	10:55PM	N/S	1 2 3 4 5 ..	
	FORT MCMURRAY	WS140	6:20AM	8:20AM	1 STOP	1 2 3 4 ..
		WS34/86	12:10PM	4:45PM	CNX	....4....
		WS29	5:05PM	7:05PM	1 STOP	1 2 3 4 5 ..
WS146		6:05PM	8:05PM	1 STOP	.....7	
WS103		8:50PM	10:50PM	1 STOP	.....7	
GANDER	WS650/798	10:05AM	9:40PM	CNX/1	1 . 3 . 5 ..	
	GRANDE PRAIRIE	WS34	12:10PM	2:13PM	1 STOP	1 2 3 4 5 ..
		WS148	1:45PM	3:48PM	1 STOP	.....6..
HALIFAX	WS115	2:50PM	4:58PM	1 STOP	.....7	
	WS652/546	12:50AM	2:05PM	CNX/1	1 2 . 4 5 ..	
	WS652/546	12:50AM	2:15PM	CNX/1	.....6..	
	WS568/616	6:45AM	3:58PM	CNX	1 2 3 4 5 6 .	
	WS605/616	8:00AM	5:08PM	CNX	.....7	
	WS798	10:00AM	7:20PM	1 STOP	.....6..	
	WS650	10:05AM	7:20PM	1 STOP	.....7	
	WS650/798	10:05AM	7:20PM	CNX	1 2 3 4 5 ..	
	D WS822	12:05PM	7:45PM	N/S	1 2 3 4 5 6 7	
	WS668/628	1:00PM	10:00PM	CNX	1 2 3 4 5 6 7	
	HAMILTON	WS568	6:45AM	12:25PM	N/S	1 2 3 4 5 6 .
		WS605	8:00AM	1:40PM	N/S	.....7
		WS435	10:00AM	4:30PM	1 STOP	.....6..
		WS554	1:00PM	6:40PM	N/S	1 2 3 4 5 . 7
	KELOWNA	WS140/44	6:20AM	7:55AM	CNX	1 2 3 4 ..
WS701/12		8:00AM	9:55AM	CNX	1 2 3 4 5 ..	
WS57		8:30AM	8:30AM	N/S	.....6..	
WS78		9:10AM	9:10AM	N/S	.....7	
WS80/142		11:30AM	1:15PM	CNX	.....6..	
WS106		12:35PM	12:35PM	N/S	1 2 3 4 5 ..	
WS717		4:15PM	4:15PM	N/S	.....7	
WS503		4:35PM	4:35PM	N/S	1 2 3 4 5 6 .	
WS797		7:15PM	7:15PM	N/S	.....7	
WS139		7:30PM	7:30PM	N/S	1 2 3 4 5 ..	
WS301		9:00PM	9:00PM	N/S	.....7	

Continued on next page • Page suivante

\*Monday/lundi=1, Tuesday/mardi=2, Wednesday/mercredi=3, Thursday/jeudi=4, Friday/vendredi=5, Saturday/samedi=6, Sunday/dimanche=7



# Calgary to/à: continued/suite

	FLIGHT NO./ NO DE VOL	DÉPARTS/ DÉPART	ARRIVES/ ARRIVÉE	STOPS/ ARRÊT	*DAYS/ JOURS
LONDON	WS772/94	6:30AM	1:23PM	CNX	1 2 3 4 5 ••
	WS117/300	9:45AM	4:13PM	CNX	••••••7
	WS561	2:45PM	8:15PM	N/S	1 • 3 • 5 ••
	WS561	3:45PM	9:15PM	N/S	••••••7
MONCTON	WS568	6:45AM	3:55PM	1 STOP	1 2 3 4 5 6 •
	WS605	8:00AM	5:05PM	1 STOP	••••••7
	F WS828	12:20PM	8:25PM	N/S	1 • 3 • 5 ••
MONTRÉAL	WS668	1:00PM	9:45PM	1 STOP	1 2 3 4 5 6 7
	WS652/660	12:50AM	9:10AM	CNX	1 2 • 4 5 6 •
	WS796	7:00AM	12:57PM	N/S	••••4•••
OTTAWA	WS698	7:00AM	2:30PM	1 STOP	1 2 3 4 5 6 7
	WS798/654	10:00AM	5:45PM	CNX	••••••6•
	WS650/654	10:05AM	5:45PM	CNX	1 2 3 4 5 • 7
	WS668	1:00PM	6:57PM	N/S	1 2 3 4 5 6 7
	WS652/693	12:50AM	8:00AM	CNX	••••••6•
	WS652/583	12:50AM	8:05AM	CNX	1 2 • 4 5 ••
PRINCE GEORGE	WS772	6:30AM	1:24PM	1 STOP	1 2 3 4 5 ••
	WS540	10:05AM	4:05PM	N/S	1 2 3 4 5 6 7
	WS661	1:05PM	8:35PM	1 STOP	1 2 3 4 5 • 7
	WS559/448	1:05PM	8:35PM	CNX	••••••6•
	WS591	7:00AM	9:05AM	1 STOP	••••••7
	WS701	8:00AM	9:55AM	1 STOP	1 2 3 4 5 ••
REGINA	WS447/57	9:35AM	11:30AM	CNX	••••••6•
	WS102/143	2:00PM	4:50PM	CNX	1 2 3 4 5 ••
	WS411	4:00PM	6:05PM	1 STOP	••••••7
	WS411/376	4:45PM	8:00PM	CNX	1 2 3 4 5 ••
	WS23/319	5:20PM	9:10PM	CNX	••••••7
	WS126	9:50AM	11:03AM	N/S	••••••6•
SASKATOON	WS210	11:45AM	12:58PM	N/S	1 2 3 4 5 ••
	WS20	12:25PM	1:38PM	N/S	••••••7
	WS440	6:30PM	7:43PM	N/S	••••••7
	WS162	6:45PM	7:58PM	N/S	••••••6•
	WS256	7:00PM	8:13PM	N/S	1 2 3 4 5 ••
	WS116	7:50PM	9:03PM	N/S	••••••7
	WS278	9:05PM	10:18PM	N/S	••••5••
	WS356	9:05PM	10:22PM	N/S	1 2 3 4 •••
	WS302	9:25PM	10:42PM	N/S	••••••7
	WS28	9:20AM	10:23AM	N/S	1 2 3 4 5 ••
ST. JOHN'S	WS51	9:50AM	10:53AM	N/S	••••••6•
	WS67	10:25AM	11:28AM	N/S	••••••7
	WS716	12:55PM	1:58PM	N/S	••••••7
	WS454	1:05PM	2:08PM	N/S	1 2 3 4 5 ••
	WS549	1:05PM	2:08PM	N/S	••••••6•
	WS85	7:00PM	8:03PM	N/S	••••••7
	WS178	7:35PM	8:38PM	N/S	1 2 3 4 5 ••
	WS98	10:10PM	11:13PM	N/S	••••••7
THUNDER BAY	WS798	10:00AM	9:45PM	2 STOPS	••••••6•
	WS650	10:05AM	9:45PM	2 STOPS	••••••7
	WS650/798	10:05AM	9:45PM	CNX/1	• 2 • 4 •••
TORONTO	F WS826	12:20PM	9:10PM	N/S	• 2 • 4 • 6 7
	WS732	9:20AM	2:53PM	1 STOP	1 2 3 4 5 ••
	WS435	10:00AM	2:30PM	N/S	••••••6•
	WS679	10:00AM	2:30PM	N/S	••••••7
TORONTO	WS414	11:30AM	5:03PM	1 STOP	••••••7
	WS652	12:50AM	6:35AM	N/S	1 2 • 4 5 6 •
	WS698	7:00AM	12:45PM	N/S	1 2 3 4 5 6 7
	WS798	10:00AM	3:45PM	N/S	••••••6•
	WS650	10:05AM	3:50PM	N/S	1 2 3 4 5 • 7
	WS559	1:05PM	6:50PM	N/S	••••••6•
	WS661	1:05PM	6:50PM	N/S	1 2 3 4 5 • 7
	WS674	2:30PM	8:15PM	N/S	1 2 3 4 5 6 7
	WS604	3:20PM	9:05PM	N/S	••••••7
	WS664	4:30PM	10:15PM	N/S	1 2 3 4 5 • 7

Continued on next page • Page suivante

\*Monday/lundi=1, Tuesday/mardi=2, Wednesday/mercredi=3, Thursday/jeudi=4, Friday/vendredi=5, Saturday/samedi=6, Sunday/dimanche=7

# Calgary to/à: continued/suite

	FLIGHT NO./ NO DE VOL	DÉPARTS/ DÉPART	ARRIVES/ ARRIVÉE	STOPS/ ARRÊT	*DAYS/ JOURS	
VANCOUVER	WS55	7:00AM	7:25AM	N/S	1 2 3 4 5 ••	
	WS571	7:00AM	7:25AM	N/S	••••••6•	
	WS591	7:00AM	7:25AM	N/S	••••••7	
	WS701	8:00AM	8:25AM	N/S	1 2 3 4 5 6 7	
	WS598	9:20AM	9:45AM	N/S	1 2 3 4 5 ••	
	WS447	9:35AM	10:00AM	N/S	••••••6•	
	WS631	10:00AM	10:25AM	N/S	••••••7	
	WS95	10:50AM	11:15AM	N/S	1 2 3 4 5 ••	
	WS80	11:30AM	11:55AM	N/S	••••••6•	
	WS663	12:00PM	12:25PM	N/S	1 2 3 4 5 ••	
	WS167	1:00PM	1:25PM	N/S	1 2 3 4 5 ••	
	WS127	1:55PM	2:20PM	N/S	••••••6•	
	WS102	2:00PM	2:25PM	N/S	1 2 3 4 5 ••	
	WS415	2:00PM	2:25PM	N/S	••••••7	
	WS129	2:45PM	3:10PM	N/S	••••••7	
	WS84	3:10PM	3:35PM	N/S	••••••7	
	WS211	3:25PM	3:50PM	N/S	1 2 3 4 5 ••	
	WS598	3:50PM	4:15PM	N/S	••••••6•	
	WS411	4:00PM	4:25PM	N/S	••••••7	
	VICTORIA	WS411	4:45PM	5:10PM	N/S	1 2 3 4 5 ••
WS23		5:20PM	5:45PM	N/S	••••••7	
WS124		6:25PM	6:50PM	N/S	1 2 3 4 •••	
WS521		7:30PM	7:55PM	N/S	1 2 3 4 5 ••	
WS341		8:05PM	8:30PM	N/S	••••••6•	
WS511		8:10PM	8:35PM	N/S	••••••7	
WS613		9:05PM	9:30PM	N/S	••••5••	
WS140/501		6:20AM	8:34AM	CNX	1 2 3 4 •••	
WS53		8:30AM	9:00AM	N/S	••••••6•	
WS89		10:15AM	10:45AM	N/S	1 2 3 4 5 • 7	
WS43		11:30AM	12:00PM	N/S	••••••6•	
WS541		1:30PM	2:00PM	N/S	••••••7	
WS255		3:20PM	3:50PM	N/S	1 2 3 4 5 ••	
WS717		4:15PM	5:35PM	1 STOP	••••••7	
WS503		4:35PM	5:55PM	1 STOP	1 2 3 4 5 6 •	
WS651	7:30PM	8:00PM	N/S	••••5• 7		
WINDSOR	WS531	9:10PM	9:40PM	N/S	1 2 3 4 5 ••	
	WS706	2:45PM	8:10PM	N/S	• 2 • 4 •••	
	WS706	3:35PM	9:00PM	N/S	••••••6•	
	WINNIPEG	WS772	6:30AM	9:25AM	N/S	1 2 3 4 5 ••
		WS732	9:20AM	12:15PM	N/S	1 2 3 4 5 ••
		WS117	9:45AM	12:40PM	N/S	••••••7
		WS572	10:50AM	1:45PM	N/S	••••••6•
		WS414	11:30AM	2:25PM	N/S	••••••7
		WS404	1:10PM	4:05PM	N/S	1 2 3 4 5 ••
		WS40	3:05PM	6:00PM	N/S	••••••6•
WS774		4:30PM	7:25PM	N/S	••••••6•	
WS510		4:40PM	7:35PM	N/S	••••••7	
WS110		6:10PM	9:05PM	N/S	1 2 3 4 5 ••	
WINDSOR	WS212	7:15PM	10:10PM	N/S	1 2 3 • 5 ••	
	WS278	9:00PM	11:54PM	N/S	••••••7	
	WS278	9:00PM	11:55PM	N/S	••••4•••	

\*Monday/lundi=1, Tuesday/mardi=2, Wednesday/mercredi=3, Thursday/jeudi=4, Friday/vendredi=5, Saturday/samedi=6, Sunday/dimanche=7

## Agents of change

Book WestJet with your travel agent.

**WESTJET**  
Value in Canada's skies





# AIRPORT PARKING

www.parknfly.ca

Limited Time Offer

## Fly WestJet



Visit [westjet.com](http://westjet.com) for your **FREE 1 DAY Airport Parking Voucher\***

### ALL PARK'NFLY LOCATIONS INCLUDE

- > Free shuttle to and from terminal(s) 24 hours a day, 7 days a week
- > Well lit, fenced & patrolled compounds to keep your vehicle safe
- > Quick computerized check in and out
- > All major credit and debit cards accepted
- > No reservations required

**IN A HURRY?**  
Check out our new Express Stations\*

<b>Montreal</b>	Valet 12155 Côte de Liesse	(514)-631-3359
<b>Montreal</b>	Express A 700 rue Marshall	(514)-631-3359
<b>Montreal</b>	Express B 630 ave. Michel Jasmin	(514)-631-3359
<b>Toronto</b>	Valet 5815 Airport Rd.	(905) 677-9143
<b>Toronto</b>	Self Park 933 Dixon Rd.	(905) 677-9143
<b>Toronto</b>	Economy 626 Dixon Rd.	(905) 677-9143
<b>Ottawa</b>	Self Park 3600 Uplands Dr.	(613) 247-1014
<b>Windsor</b>	Self Park 2955 County Rd. 42	(519) 969-2841
<b>Edmonton</b>	Valet & Self Park 8410-43 St.	(780) 986-9080
<b>Calgary</b>	Self Park 9100 Barlow Trail N.E.	(403) 250-6533
<b>Vancouver</b>	Valet 6380 Miller Rd.	(604) 270-9476

\*At participating locations.

## Comox to/à:

	FLIGHT NO./ NO DE VOL	DEPARTS/ DEPART	ARRIVES/ ARRIVEE	STOPS/ ARRÊT	*DAYS/ JOURS
CALGARY	WS67	7:00AM	9:20AM	N/S	••••••7
	WS166	10:10AM	12:30PM	N/S	1 2 3 4 5 ••
	WS148	11:00AM	1:20PM	N/S	••••••6•
	WS290	11:15AM	1:35PM	N/S	••••••7
	WS146	3:15PM	5:35PM	N/S	••••••7
	WS272	7:20PM	9:40PM	N/S	•••••5••
EDMONTON	WS166/240	10:10AM	4:45PM	CNX	1 2 3 4 5 ••
	WS148	11:00AM	2:30PM	1 STOP	••••••6•
	WS290/115	11:15AM	3:35PM	CNX	••••••7
	WS146	3:15PM	6:50PM	1 STOP	••••••7
	WS272/482	7:20PM	10:55PM	CNX	•••••5••
	FORT MCMURRAY	WS166/29	10:10AM	7:05PM	CNX/1
WS146		3:15PM	8:05PM	2 STOPS	••••••7
WS146/103		3:15PM	10:50PM	CNX/1	••••••7
GRANDE PRAIRIE	WS148	11:00AM	3:48PM	2 STOPS	••••••6•
	WS290/115	11:15AM	4:58PM	CNX/1	••••••7
HALIFAX	WS67/650	7:00AM	7:20PM	CNX/1	••••••7
	WS166/668/628	10:10AM	10:00PM	2CNX	1 2 3 4 5 ••
HAMILTON	WS67/554	7:00AM	6:40PM	CNX	••••••7
	WS166/554	10:10AM	6:40PM	CNX	1 2 3 4 5 ••
KELOWNA	WS166/503	10:10AM	4:35PM	CNX	1 2 3 4 5 ••
	WS148/503	11:00AM	4:35PM	CNX	••••••6•
	WS290/717	11:15AM	4:15PM	CNX	••••••7
	WS146/797	3:15PM	7:15PM	CNX	••••••7
LONDON	WS166/561	10:10AM	8:15PM	CNX	1 • 3 • 5 ••
	WS290/561	11:15AM	9:15PM	CNX	••••••7
MONCTON	WS166/668	10:10AM	9:45PM	CNX/1	1 2 3 4 5 ••
MONTREAL	WS67/650/654	7:00AM	5:45PM	2CNX	••••••7
	WS166/668	10:10AM	6:57PM	CNX	1 2 3 4 5 ••
	WS272/652/660	7:20PM	9:10AM+1	2CNX	•••••5••
OTTAWA	WS67/540	7:00AM	4:05PM	CNX	••••••7
	WS166/661	10:10AM	8:35PM	CNX/1	1 2 3 4 5 ••
	WS272/652/693	7:20PM	8:00AM+1	2CNX	•••••5••
REGINA	WS67/20	7:00AM	1:38PM	CNX	••••••7
	WS166/256	10:10AM	8:13PM	CNX	1 2 3 4 5 ••
	WS148/162	11:00AM	7:58PM	CNX	••••••6•
	WS290/440	11:15AM	7:43PM	CNX	••••••7
	WS146/440	3:15PM	7:43PM	CNX	••••••7
SASKATOON	WS67	7:00AM	11:28AM	1 STOP	••••••7
	WS166/454	10:10AM	2:08PM	CNX	1 2 3 4 5 ••
	WS146/85	3:15PM	8:03PM	CNX	••••••7
ST. JOHN'S	F WS67/826	7:00AM	9:10PM	CNX	••••••7
	WS67/650	7:00AM	9:45PM	CNX/2	••••••7
THUNDER BAY	WS67/679	7:00AM	2:30PM	CNX	••••••7
TORONTO	WS67/650	7:00AM	3:50PM	CNX	••••••7
	WS166/661	10:10AM	6:50PM	CNX	1 2 3 4 5 ••
	WS148/674	11:00AM	8:15PM	CNX	••••••6•
	WS290/674	11:15AM	8:15PM	CNX	••••••7
	WS272/652	7:20PM	6:35AM+1	CNX	•••••5••
WINDSOR	WS166/706	10:10AM	8:10PM	CNX	• 2 • 4 •••
	WS148/706	11:00AM	9:00PM	CNX	••••••6•
WINNIPEG	WS67/117	7:00AM	12:40PM	CNX	••••••7
	WS166/404	10:10AM	4:05PM	CNX	1 2 3 4 5 ••
	WS148/40	11:00AM	6:00PM	CNX	••••••6•

\*Monday/lundi=1, Tuesday/mardi=2, Wednesday/mercredi=3, Thursday/jeudi=4, Friday/vendredi=5, Saturday/samedi=6, Sunday/dimanche=7

## Unconventional convention travel.



Call our Specialty Sales Team at **1.888.493.7853** for special discounts on conference or convention travel.



# Edmonton to/à:

	FLIGHT NO./ NO DE VOL	DEPARTS/ DEPART	ARRIVES/ ARRIVEE	STOPS/ ARRET	*DAYS/ JOURS	
ABBOTSFORD	WS91/409	7:00AM	9:00AM	CNX	1 2 3 4 5 ••	
	WS63	9:05AM	10:40AM	1 STOP	••••••7	
	WS80/83	10:10AM	12:10PM	CNX	1 2 3 4 5 ••	
	WS80/83	10:10AM	12:15PM	CNX	••••••6•	
	WS64/101	1:55PM	3:25PM	CNX	••••••7	
	WS241/467	5:10PM	7:00PM	CNX	1 2 3 4 5 ••	
	WS149	5:30PM	7:00PM	1 STOP	••••••6•	
	WS116/49	6:40PM	10:30PM	CNX	••••••7	
	WS144	8:50PM	10:20PM	1 STOP	1 2 3 4 5 ••	
	CALGARY	WS91	7:00AM	7:43AM	N/S	1 2 3 4 5 ••
WS732		8:00AM	8:45AM	N/S	1 2 3 4 5 ••	
WS145		8:30AM	9:13AM	N/S	••••••6•	
WS63		9:05AM	9:48AM	N/S	••••••7	
WS80		10:10AM	10:53AM	N/S	1 2 3 4 5 6•	
WS64		1:55PM	2:38PM	N/S	••••••7	
WS46		3:55PM	4:38PM	N/S	1 2 3 4 5 ••	
WS241		5:10PM	5:53PM	N/S	1 2 3 4 5 ••	
WS149		5:30PM	6:13PM	N/S	••••••6•	
WS116		6:40PM	7:23PM	N/S	••~•••••7	
WS144		8:50PM	9:33PM	N/S	1 2 3 4 5 ••	
WS120		9:55PM	10:38PM	N/S	••~•••••7	
COMOX		WS732/151	8:00AM	9:40AM	CNX	1 2 3 4 5 ••
	WS145	8:30AM	10:30AM	1 STOP	••~•••••6•	
	WS63/289	9:05AM	10:45AM	CNX	••~•••••7	
	WS241/271	5:10PM	6:50PM	CNX	••~•••••5••	
FORT MCMURRAY	WS140	7:30AM	8:20AM	N/S	1 2 3 4 5 6•	
	WS86	3:55PM	4:45PM	N/S	••~••4••••	
	WS29	6:15PM	7:05PM	N/S	1 2 3 4 5 ••	
	WS146	7:15PM	8:05PM	N/S	••~••••••7	
	WS103	10:00PM	10:50PM	N/S	••~••••••7	
GANDER	WS654/798	10:10AM	9:40PM	CNX/1	1 • 3 • 5 ••	
GRANDE PRAIRIE	WS34	1:20PM	2:13PM	N/S	1 2 3 4 5 ••	
	WS148	2:55PM	3:48PM	N/S	••~•••••6•	
	WS115	4:05PM	4:58PM	N/S	••~••••••7	
HALIFAX	WS616	6:45AM	3:58PM	1 STOP	1 2 3 4 5 6•	
	WS616	8:00AM	5:08PM	1 STOP	••~••••••7	
	WS145/798	8:30AM	7:20PM	CNX/1	••~•••••6•	
	WS654/650	10:10AM	7:20PM	CNX	••~••••••7	
	WS654/798	10:10AM	7:20PM	CNX	1 2 3 4 5 6•	
HAMILTON	WS616	6:45AM	12:20PM	N/S	1 2 3 4 5 6•	
	WS616	8:00AM	1:35PM	N/S	••~••••••7	
	WS145/435	8:30AM	4:30PM	CNX/1	••~•••••6•	
	WS618	10:15AM	3:50PM	N/S	1 2 3 4 5 •7	
KELOWNA	WS11/716	7:45AM	10:00AM	CNX	••~••••••7	
	WS44	7:50AM	7:55AM	N/S	1 2 3 4 5 ••	
	WS44	9:50AM	9:55AM	N/S	••~•••••6•	
	WS65	2:05PM	2:10PM	N/S	••~••••••7	
	WS31	4:20PM	4:25PM	N/S	1 2 3 4 5 6•	
	WS68	5:00PM	5:05PM	N/S	••~••••••7	
	LONDON	WS696/94	6:30AM	1:23PM	CNX	1 2 3 4 5 ••
		WS300	9:30AM	4:13PM	1 STOP	••~••••••7
WS80/561		10:10AM	8:15PM	CNX	1 • 3 • 5 ••	
WS64/561		1:55PM	9:15PM	CNX	••~••••••7	
MONCTON	WS616/568	6:45AM	3:55PM	CNX	1 2 3 4 5 6•	
	WS616/605	8:00AM	5:05PM	CNX	••~••••••7	
	F WS80/828	10:10AM	8:25PM	CNX	1 • 3 • 5 ••	
	WS80/668	10:10AM	9:45PM	CNX/1	1 2 3 4 5 6•	
MONTREAL	WS696	6:30AM	1:25PM	1 STOP	1 2 3 4 5 ••	
	WS654	10:10AM	5:45PM	1 STOP	1 2 3 4 5 67	
	WS54/448/559	12:25PM	8:40PM	2CNX	••~•••••6•	
	WS144/652/660	8:50PM	9:10AM+1	2CNX	1 • 3 4 5 ••	
	WS120/652/660	9:55PM	9:10AM+1	2CNX	••~••••••7	

Continued on next page • Page suivante

\*Monday/lundi=1, Tuesday/mardi=2, Wednesday/mercredi=3, Thursday/jeudi=4, Friday/vendredi=5, Saturday/samedi=6, Sunday/dimanche=7

# Edmonton to/à: continued/suite

	FLIGHT NO./ NO DE VOL	DEPARTS/ DEPART	ARRIVES/ ARRIVEE	STOPS/ ARRET	*DAYS/ JOURS	
OTTAWA	WS696/772	6:30AM	1:24PM	CNX	1 2 3 4 5 ••	
	WS609	8:20AM	3:35PM	1 STOP	••~••••••7	
	WS145/540	8:30AM	4:05PM	CNX	••~•••••6•	
	WS644	11:35AM	5:13PM	N/S	1 2 3 4 5 ••	
	WS54/448	12:25PM	8:35PM	CNX/1	••~•••••6•	
	WS644	2:00PM	7:38PM	N/S	••~••••••7	
	WS144/652/693	8:50PM	8:00AM+1	2CNX	••~•••••5••	
	WS144/652/583	8:50PM	8:05AM+1	2CNX	1 • 3 4 •••	
	WS120/652/583	9:55PM	8:05AM+1	2CNX	••~••••••7	
	PRINCE GEORGE	WS11/701	7:45AM	9:55AM	CNX	1 2 3 4 5 ••
WS11/57		7:45AM	11:30AM	CNX	••~•••••6•	
WS143		2:15PM	4:50PM	1 STOP	1 2 3 4 5 ••	
WS518/411		3:00PM	6:05PM	CNX	••~••••••7	
WS31/376		4:20PM	8:00PM	CNX/1	1 2 3 4 5 ••	
WS17/319		6:00PM	9:10PM	CNX	••~••••••7	
REGINA		WS145/126	8:30AM	11:03AM	CNX	••~•••••6•
	WS26	12:30PM	1:40PM	N/S	••~••••••7	
	WS12	12:55PM	2:05PM	N/S	1 2 3 4 5 6•	
	WS241/256	5:10PM	8:13PM	CNX	1 2 3 4 5 ••	
	WS149/162	5:30PM	7:58PM	CNX	••~•••••6•	
	WS116	6:40PM	9:03PM	1 STOP	••~••••••7	
	SASKATOON	WS145/51	8:30AM	10:53AM	CNX	••~•••••6•
		WS63/67	9:05AM	11:28AM	CNX	••~••••••7
WS41		10:05AM	11:00AM	N/S	1 2 3 4 5 ••	
WS80/454		10:10AM	2:08PM	CNX	1 2 3 4 5 ••	
WS80/549		10:10AM	2:08PM	CNX	••~•••••6•	
WS241/178		5:10PM	8:38PM	CNX	1 2 3 4 5 ••	
WS116/98		6:40PM	11:13PM	CNX	••~••••••7	
ST. JOHN'S	WS145/798	8:30AM	9:45PM	CNX/2	••~•••••6•	
	WS654/650	10:10AM	9:45PM	CNX/1	••~••••••7	
	WS654/798	10:10AM	9:45PM	CNX/1	• 2 • 4 • 6 •	
THUNDER BAY	WS732	8:00AM	2:53PM	2 STOPS	1 2 3 4 5 ••	
	WS145/435	8:30AM	2:30PM	CNX	••~•••••6•	
	WS300/414	9:30AM	5:03PM	CNX	••~••••••7	
TORONTO	WS609	8:20AM	2:00PM	N/S	••~••••••7	
	WS654	10:10AM	3:50PM	N/S	1 2 3 4 5 67	
	WS656	5:05PM	10:45PM	N/S	••~•••••6•	
	WS656	6:10PM	11:50PM	N/S	1 2 3 4 5 •7	
	WS144/652	8:50PM	6:35AM+1	CNX	1 • 3 4 5 ••	
	WS120/652	9:55PM	6:35AM+1	CNX	••~••••••7	
	VANCOUVER	WS11	7:45AM	8:18AM	N/S	1 2 3 4 5 67
		WS113	10:10AM	10:43AM	N/S	••~•••••6•
WS125		10:10AM	10:43AM	N/S	1 2 3 4 5 ••	
WS100		10:30AM	11:03AM	N/S	••~••••••7	
WS579		10:55AM	11:28AM	N/S	••~••••••7	
WS677		11:40AM	12:14PM	N/S	••~•••••6•	
WS61		1:00PM	1:33PM	N/S	1 2 3 4 5 ••	
WS143		2:15PM	2:48PM	N/S	1 2 3 4 5 ••	
WS518		3:00PM	3:33PM	N/S	••~••••••7	
WS76		3:30PM	4:03PM	N/S	1 2 3 • 5 ••	
WS52		4:20PM	4:53PM	N/S	••~•••••6•	
WS31		4:20PM	5:45PM	1 STOP	1 2 3 4 5 6•	
WS725		5:30PM	6:03PM	N/S	••~•••••6•	
WS17		6:00PM	6:33PM	N/S	••~••••••7	
WS107		6:40PM	7:13PM	N/S	1 2 3 4 5 ••	
WS437		7:30PM	8:03PM	N/S	1 2 3 • 5 ••	
WS719		8:25PM	8:59PM	N/S	••~••••••7	
VICTORIA	WS501	8:00AM	8:34AM	N/S	1 2 3 4 5 6•	
	WS63/89	9:05AM	10:45AM	CNX	••~••••••7	
	WS80/43	10:10AM	12:00PM	CNX	••~•••••6•	
	WS213	3:00PM	3:34PM	N/S	••~•••••6•	
	WS35	4:00PM	4:34PM	N/S	••~••••••7	
	WS192	5:00PM	5:34PM	N/S	1 2 3 4 5 ••	
	WS267	9:20PM	9:54PM	N/S	••~••••••7	

Continued on next page • Page suivante

\*Monday/lundi=1, Tuesday/mardi=2, Wednesday/mercredi=3, Thursday/jeudi=4, Friday/vendredi=5, Saturday/samedi=6, Sunday/dimanche=7



# Edmonton to/à: *continued/suite*

	FLIGHT NO./ NO DE VOL	DÉPARTS/ DEPART	ARRIVÉS/ ARRIVÉE	STOPS/ ARRÊT	*DAYS/ JOURS
WINDSOR	WS145/706	8:30AM	9:00PM	CNX	•••••6•
	WS80/706	10:10AM	8:10PM	CNX	•2•4••••
WINNIPEG	WS696	6:30AM	9:18AM	N/S	12345••
	WS732	8:00AM	12:15PM	1 STOP	12345••
	WS145/572	8:30AM	1:45PM	CNX	•••••6•
	WS300	9:30AM	12:18PM	N/S	•••••7
	WS41	10:05AM	1:45PM	1 STOP	12345••
	WS54	12:25PM	3:13PM	N/S	•••••6•
	WS64/510	1:55PM	7:35PM	CNX	•••••7
	WS38	3:30PM	6:18PM	N/S	•••••6•
	WS198	4:45PM	7:33PM	N/S	12345••
	WS193	8:00PM	10:48PM	N/S	•••••7

\*Monday/lundi=1, Tuesday/mardi=2, Wednesday/mercredi=3, Thursday/jeudi=4, Friday/vendredi=5, Saturday/samedi=6, Sunday/dimanche=7

## Toronto ↔ Montréal

12 non-stop flights  
every business day



## Toronto ↔ Ottawa

10 non-stop flights  
every business day



[westjet.com](http://westjet.com)

1-888-WestJet

**WESTJET**

# Fort McMurray to/à:

	FLIGHT NO./ NO DE VOL	DÉPARTS/ DEPART	ARRIVÉS/ ARRIVÉE	STOPS/ ARRÊT	*DAYS/ JOURS
ABBOTSFORD	WS80/83	8:50AM	12:10PM	CNX/1	12345••
	WS80/83	8:50AM	12:15PM	CNX/1	•••••6•
	WS87/144	5:20PM	10:20PM	CNX/1	•••4•••
CALGARY	WS144	7:35PM	10:20PM	2 STOPS	12345••
	WS501/732	6:45AM	8:45AM	CNX	1•••••••
	WS80	8:50AM	10:53AM	1 STOP	123456•
	WS144	7:35PM	9:33PM	1 STOP	12345••
COMOX	WS120	8:40PM	10:38PM	1 STOP	•••••7
	WS501/732/151	6:45AM	9:40AM	2CNX	1•••••••
	WS80/384	8:50AM	4:55PM	CNX/1	•••••6•
EDMONTON	WS501	6:45AM	7:35AM	N/S	1•••••••
	WS80	8:50AM	9:40AM	N/S	123456•
	WS87	5:20PM	6:10PM	N/S	•••4•••
	WS144	7:35PM	8:25PM	N/S	12345••
	WS120	8:40PM	9:30PM	N/S	•••••7
GANDER	WS80/654/798	8:50AM	9:40PM	2CNX/1	1•3•5••
GRANDE PRAIRIE	WS80/34	8:50AM	2:13PM	CNX	12345••
HALIFAX	WS80/654/798	8:50AM	7:20PM	2CNX	123456•
	WS144/652/546	7:35PM	2:05PM+1	2CNX/2	1•34•••
	WS144/652/546	7:35PM	2:15PM+1	2CNX/2	••••5••
	WS120/652/546	8:40PM	2:05PM+1	2CNX/2	•••••7
HAMILTON	WS80/618	8:50AM	3:50PM	CNX	12345••
KELOWNA	WS80/106	8:50AM	12:35PM	CNX/1	12345••
	WS80/142	8:50AM	1:15PM	CNX/2	•••••6•
LONDON	WS80/561	8:50AM	8:15PM	CNX/1	1•3•5••
MONCTON	F WS80/828	8:50AM	8:25PM	CNX/1	1•3•5••
	WS80/668	8:50AM	9:45PM	CNX/2	123456•
MONTRÉAL	WS80/654	8:50AM	5:45PM	CNX/1	123456•
	WS144/652/660	7:35PM	9:10AM+1	2CNX/1	1•345••
	WS120/652/660	8:40PM	9:10AM+1	2CNX/1	•••••7
OTTAWA	WS80/644	8:50AM	5:13PM	CNX	12345••
	WS144/652/693	7:35PM	8:00AM+1	2CNX/1	••••5••
	WS144/652/583	7:35PM	8:05AM+1	2CNX/1	1•34•••
	WS120/652/583	8:40PM	8:05AM+1	2CNX/1	•••••7
PRINCE GEORGE	WS80/143	8:50AM	4:50PM	CNX/1	12345••
REGINA	WS80/210	8:50AM	12:58PM	CNX/1	12345••
	WS80/12	8:50AM	2:05PM	CNX	123456•
SASKATOON	WS80/41	8:50AM	11:00AM	CNX	12345••
	WS80/549	8:50AM	2:08PM	CNX/1	•••••6•
ST. JOHN'S	WS80/654/798	8:50AM	9:45PM	2CNX/1	•2•4•6•
THUNDER BAY	WS501/732	6:45AM	2:53PM	CNX/2	1•••••••
TORONTO	WS80/654	8:50AM	3:50PM	CNX	123456•
	WS144/652	7:35PM	6:35AM+1	CNX/1	1•345••
	WS120/652	8:40PM	6:35AM+1	CNX/1	•••••7
VANCOUVER	WS501/125	6:45AM	10:43AM	CNX	1•••••••
	WS80/113	8:50AM	10:43AM	CNX	•••••6•
	WS80/125	8:50AM	10:43AM	CNX	12345••
VICTORIA	WS87/107	5:20PM	7:13PM	CNX	•••4•••
	WS501	6:45AM	8:34AM	1 STOP	1•••••••
WINDSOR	WS80/43	8:50AM	12:00PM	CNX/1	•••••6•
	WS80/706	8:50AM	8:10PM	CNX/1	•2•4•••
WINNIPEG	WS80/706	8:50AM	9:00PM	CNX/1	•••••6•
	WS501/732	6:45AM	12:15PM	CNX/1	1•••••••
	WS80/41	8:50AM	1:45PM	CNX/1	12345••
	WS80/54	8:50AM	3:13PM	CNX	•••••6•

\*Monday/lundi=1, Tuesday/mardi=2, Wednesday/mercredi=3, Thursday/jeudi=4, Friday/vendredi=5, Saturday/samedi=6, Sunday/dimanche=7

1600 flights a week. Coast to coast.



[westjet.com](http://westjet.com) | 1-888-WestJet

**WESTJET**





## Gander to/à:

	FLIGHT NO./ NO DE VOL	DÉPARTS/ DÉPART	ARRIVÉS/ ARRIVÉE	STOPS/ ARRÊT	*DAYS/ JOURS
ABBOTSFORD	WS699/84	9:20AM	4:05PM	CNX/2	•••••6•
	WS699/96	9:20AM	4:20PM	CNX/2	•2•4•••
CALGARY	WS699	9:20AM	3:15PM	2 STOPS	•2•4•6•
EDMONTON	WS699/240	9:20AM	4:45PM	CNX/2	•2•4•••
	WS699/236	9:20AM	7:55PM	CNX/2	•••••6•
FORT MCMURRAY	WS699/29	9:20AM	7:05PM	CNX/3	•2•4•••
HALIFAX	WS699	9:20AM	10:20AM	N/S	•2•4•6•
HAMILTON	WS699/613	9:20AM	5:47PM	CNX	•2•4•6•
KELOWNA	WS699/503	9:20AM	4:35PM	CNX/2	•2•4•6•
MONTRÉAL	WS699/698	9:20AM	2:30PM	CNX/1	•2•4•6•
OTTAWA	WS699/615	9:20AM	2:00PM	CNX/1	•2•4•••
	WS699/695	9:20AM	3:32PM	CNX	•••••6•
PRINCE GEORGE	WS699/411/376	9:20AM	8:00PM	2CNX/2	•2•4•••
REGINA	WS699/162	9:20AM	7:58PM	CNX/2	•••••6•
	WS699/256	9:20AM	8:13PM	CNX/2	•2•4•••
SASKATOON	WS699/721/107	9:20AM	4:40PM	2CNX/1	•2•4•••
THUNDER BAY	WS699/569	9:20AM	7:30PM	CNX/1	•2•4•••
	WS699/695	9:20AM	7:30PM	CNX/1	•••••6•
TORONTO	WS699	9:20AM	12:10PM	1 STOP	•2•4•6•
VANCOUVER	WS699/598	9:20AM	4:15PM	CNX/2	•••••6•
	WS699/411	9:20AM	5:10PM	CNX/2	•2•4•••
VICTORIA	WS699/503	9:20AM	5:55PM	CNX/3	•2•4•6•
WINNIPEG	WS699/721	9:20AM	2:15PM	CNX/1	•2•4•••

## Grande Prairie to/à:

	FLIGHT NO./ NO DE VOL	DÉPARTS/ DÉPART	ARRIVÉS/ ARRIVÉE	STOPS/ ARRÊT	*DAYS/ JOURS
ABBOTSFORD	WS46/467	2:40PM	7:00PM	CNX/1	1 2 3 4 5 ••
	WS149	4:15PM	7:00PM	2 STOPS	•••••6•
	WS116/49	5:25PM	10:30PM	CNX/1	•••••7
CALGARY	WS46	2:40PM	4:38PM	1 STOP	1 2 3 4 5 ••
	WS149	4:15PM	6:13PM	1 STOP	•••••6•
	WS116	5:25PM	7:23PM	1 STOP	•••••7
COMOX	WS46/271	2:40PM	6:50PM	CNX/1	••••5••
EDMONTON	WS46	2:40PM	3:30PM	N/S	1 2 3 4 5 ••
	WS149	4:15PM	5:05PM	N/S	•••••6•
	WS116	5:25PM	6:15PM	N/S	•••••7
FORT MCMURRAY	WS46/86	2:40PM	4:45PM	CNX	•••4•••
	WS46/29	2:40PM	7:05PM	CNX	1 2 3 4 5 ••
	WS116/146	5:25PM	8:05PM	CNX	•••••7
KELOWNA	WS46/31	2:40PM	4:25PM	CNX	1 2 3 4 5 ••
	WS116/301	5:25PM	9:00PM	CNX/1	•••••7
PRINCE GEORGE	WS46/31/376	2:40PM	8:00PM	2CNX/1	1 2 3 4 5 ••
REGINA	WS46/256	2:40PM	8:13PM	CNX/1	1 2 3 4 5 ••
	WS46/278	2:40PM	10:18PM	CNX/1	••••5••
	WS149/162	4:15PM	7:58PM	CNX/1	•••••6•
	WS116	5:25PM	9:03PM	2 STOPS	•••••7
SASKATOON	WS46/178	2:40PM	8:38PM	CNX/1	1 2 3 4 5 ••
	WS116/98	5:25PM	11:13PM	CNX/1	•••••7
TORONTO	WS46/198	2:40PM	11:20PM	CNX/1	1 2 3 4 5 ••
VANCOUVER	WS46/31	2:40PM	5:45PM	CNX/1	1 2 3 4 5 ••
	WS149/725	4:15PM	6:03PM	CNX	•••••6•
	WS116/511	5:25PM	8:35PM	CNX/1	•••••7
VICTORIA	WS46/192	2:40PM	5:34PM	CNX	1 2 3 4 5 ••
WINNIPEG	WS46/198	2:40PM	7:33PM	CNX	1 2 3 4 5 ••
	WS116/193	5:25PM	10:48PM	CNX	•••••7

\*Monday/lundi=1, Tuesday/mardi=2, Wednesday/mercredi=3, Thursday/jeudi=4, Friday/vendredi=5, Saturday/samedi=6, Sunday/dimanche=7



## Halifax to/à:

	FLIGHT NO./ NO DE VOL	DÉPARTS/ DÉPART	ARRIVÉS/ ARRIVÉE	STOPS/ ARRÊT	*DAYS/ JOURS
ABBOTSFORD	WS629/667/83	7:00AM	12:10PM	2CNX	1 2 3 4 5 ••
	WS629/667/83	7:00AM	12:15PM	2CNX	•••••6•
	D WS823/83	7:30AM	12:10PM	CNX	1 2 3 4 5 ••
	D WS823/83	7:30AM	12:15PM	CNX	••~••6•
	WS699/84	10:55AM	4:05PM	CNX/1	••~••6•
	WS699/96	10:55AM	4:20PM	CNX/1	1 2 3 4 5 ••
	WS699/593	10:55AM	5:35PM	CNX/1	••~••7
	WS613/144	4:30PM	10:20PM	CNX/1	1 2 3 4 5 ••
	WS613/607/49	5:40PM	10:30PM	2CNX	••~••7
CALGARY	WS629/667	7:00AM	10:53AM	CNX	1 2 3 4 5 6 7
	D WS823	7:30AM	10:05AM	N/S	1 2 3 4 5 6 7
	WS699	10:55AM	3:15PM	1 STOP	1 2 3 4 5 6 7
	WS569/521	2:35PM	6:57PM	CNX	1 2 3 4 5 ••
	WS695/521	2:45PM	6:57PM	CNX	••~••6•
	WS613/601	4:30PM	8:20PM	CNX	••~••6•
	WS613	4:30PM	8:25PM	1 STOP	1 2 3 4 5 ••
	WS613/607	5:40PM	9:45PM	CNX	••~••7
COMOX	WS629/667/150	7:00AM	2:45PM	2CNX	••~••7
	WS699/384	10:55AM	4:55PM	CNX/1	••~••6•
	WS699/271	10:55AM	6:50PM	CNX/1	••~••5•
EDMONTON	WS629/667/34	7:00AM	12:55PM	2CNX	1 2 3 4 5 ••
	WS629/667/148	7:00AM	2:30PM	2CNX	••~••6•
	WS629/667/115	7:00AM	3:35PM	2CNX	••~••7
	D WS823/34	7:30AM	12:55PM	CNX	1 2 3 4 5 ••
	WS699/240	10:55AM	4:45PM	CNX/1	1 2 3 4 5 ••
	WS699/146	10:55AM	6:50PM	CNX/1	••~••7
	WS613	4:30PM	8:23PM	1 STOP	••~••6•
	WS613/533	4:30PM	9:13PM	CNX	1 2 3 4 5 ••
	WS613	5:40PM	9:33PM	1 STOP	••~••7
FORT MCMURRAY	WS699/29	10:55AM	7:05PM	CNX/2	1 2 3 4 5 ••
	WS699/146	10:55AM	8:05PM	CNX/2	••~••7
	WS613/103	5:40PM	10:50PM	CNX/1	••~••7
GANDER	WS798	7:50PM	9:40PM	N/S	1•3•5••
GRANDE PRAIRIE	WS629/667/34	7:00AM	2:13PM	2CNX/1	1 2 3 4 5 ••
	WS629/667/148	7:00AM	3:48PM	2CNX/1	••~••6•
	WS629/667/115	7:00AM	4:58PM	2CNX/1	••~••7
	D WS823/34	7:30AM	2:13PM	CNX/1	1 2 3 4 5 ••
HAMILTON	WS613	4:30PM	5:47PM	N/S	1 2 3 4 5 6 •
	WS613	5:40PM	6:57PM	N/S	••~••7
KELOWNA	WS629/667/106	7:00AM	12:35PM	2CNX	1 2 3 4 5 ••
	WS629/667/717	7:00AM	4:15PM	2CNX	••~••7
	D WS823/106	7:30AM	12:35PM	CNX	1 2 3 4 5 ••
	D WS823/80/142	7:30AM	1:15PM	2CNX	••~••6•
	WS699/717	10:55AM	4:15PM	CNX/1	••~••7
	WS699/503	10:55AM	4:35PM	CNX/1	1 2 3 4 5 6 •
	WS569/521/139	2:35PM	7:30PM	2CNX	1 2 3 4 5 ••
MONTRÉAL	WS629	7:00AM	7:45AM	N/S	1 2 3 4 5 6 7
	WS699/698	10:55AM	2:30PM	CNX	1 2 3 4 5 6 7
	E WS569/842	2:35PM	6:55PM	CNX/1	1 2 3 4 5 ••
	E WS695/842	2:45PM	6:55PM	CNX/1	••~••6•
OTTAWA	WS699/615	10:55AM	2:00PM	CNX	1 2 3 4 5 ••
	WS699/609	10:55AM	3:35PM	CNX	••~••7
	WS569	2:35PM	3:22PM	N/S	1 2 3 4 5 ••
	WS695	2:45PM	3:32PM	N/S	••~••6•
PRINCE GEORGE	D WS823/167/143	7:30AM	4:50PM	2CNX	1 2 3 4 5 ••
	WS699/411	10:55AM	6:05PM	CNX/2	••~••7
	WS699/411/376	10:55AM	8:00PM	2CNX/1	1 2 3 4 5 ••
REGINA	WS629/667/210	7:00AM	12:58PM	2CNX	1 2 3 4 5 ••
	WS629/667/20	7:00AM	1:38PM	2CNX	••~••7
	WS629/671/162	7:00AM	7:58PM	2CNX/1	••~••6•
	D WS823/210	7:30AM	12:58PM	CNX	1 2 3 4 5 ••
	D WS823/20	7:30AM	1:38PM	CNX	••~••7
	WS613/278	4:30PM	10:18PM	CNX/1	••~••5•
	WS613/356	4:30PM	10:22PM	CNX/1	1 2 3 4 ••

Continued on next page • Page suivante

\*Monday/lundi=1, Tuesday/mardi=2, Wednesday/mercredi=3, Thursday/jeudi=4, Friday/vendredi=5, Saturday/samedi=6, Sunday/dimanche=7



# Halifax to/à: *continued/suite*

	FLIGHT NO./ NO DE VOL	DÉPARTS/ DÉPART	ARRIVES/ ARRIVÉE	STOPS/ ARRÊT	*DAYS/ JOURS
SASKATOON	WS629/667/716	7:00AM	1:58PM	2CNX	••••••7
	WS629/667/454	7:00AM	2:08PM	2CNX	1 2 3 4 5 ••
	WS629/667/549	7:00AM	2:08PM	2CNX	••••••6•
D	WS823/716	7:30AM	1:58PM	CNX	•••••••7
D	WS823/454	7:30AM	2:08PM	CNX	1 2 3 4 5 ••
D	WS823/549	7:30AM	2:08PM	CNX	••••••6•
	WS569/521/178	2:35PM	8:38PM	2CNX	1 2 3 4 5 ••
	WS613/607/98	5:40PM	11:13PM	2CNX	•••••••7
ST. JOHN'S	WS650	7:50PM	9:45PM	N/S	•••••••7
	WS798	7:50PM	9:45PM	N/S	• 2 • 4 • 6 •
THUNDER BAY	WS629/602	7:00AM	11:55AM	CNX/1	1 2 3 4 5 ••
	WS695	2:45PM	7:30PM	2 STOPS	••••••6•
	WS613/833	4:30PM	8:00PM	CNX	1 2 3 4 5 ••
	WS613/689	5:40PM	9:10PM	CNX	•••••••7
TORONTO	WS629/602	7:00AM	9:40AM	CNX	1 2 3 4 5 6 •
	WS699	10:55AM	12:10PM	N/S	1 2 3 4 5 6 7
	WS569	2:35PM	5:09PM	1 STOP	1 2 3 4 5 ••
	WS695	2:45PM	5:14PM	1 STOP	••••••6•
VANCOUVER	WS629	7:00AM	10:40AM	1 STOP	1 2 3 4 5 6 7
	WS699/598	10:55AM	4:15PM	CNX/1	••••••6•
	WS699/411	10:55AM	4:25PM	CNX/1	•••••••7
	WS699/411	10:55AM	5:10PM	CNX/1	1 2 3 4 5 ••
	WS569/521	2:35PM	7:55PM	CNX/1	1 2 3 4 5 ••
	WS613	4:30PM	9:30PM	2 STOPS	••••••5•
VICTORIA	WS629/667/43	7:00AM	12:00PM	2CNX	••••••6•
	WS629/667/541	7:00AM	2:00PM	2CNX	•••••••7
	WS629/667/255	7:00AM	3:50PM	2CNX	1 2 3 4 5 ••
D	WS823/43	7:30AM	12:00PM	CNX	••••••6•
D	WS823/541	7:30AM	2:00PM	CNX	•••••••7
	WS699/717	10:55AM	5:35PM	CNX/2	•••••••7
	WS699/503	10:55AM	5:55PM	CNX/2	1 2 3 4 5 6 •
	WS613/531	4:30PM	9:40PM	CNX/1	1 2 3 4 5 ••
WINNIPEG	WS629/602	7:00AM	12:35PM	CNX/2	1 2 3 4 5 ••
	WS699/721	10:55AM	2:15PM	CNX	1 2 3 4 5 ••
	WS613/436	4:30PM	7:50PM	CNX	••••••6•

\*Monday/lundi=1, Tuesday/mardi=2, Wednesday/mercredi=3, Thursday/jeudi=4, Friday/vendredi=5, Saturday/samedi=6, Sunday/dimanche=7



## WestJet Gift Certificates. Any size fits all.

They're practical, thoughtful,  
easy to wrap, and they're available  
in any denomination you'd like.

And, now, when you purchase  
gift certificates online at [westjet.com](http://westjet.com), you  
can earn valuable AIR MILES® reward miles.

[westjet.com](http://westjet.com)



© Trademarks of AIR MILES International Trading B.V. Used under license by Loyalty Management Group Canada Inc. and WestJet.

# Hamilton to/à:

	FLIGHT NO./ NO DE VOL	DÉPARTS/ DÉPART	ARRIVES/ ARRIVÉE	STOPS/ ARRÊT	*DAYS/ JOURS
ABBOTSFORD	WS553/439	10:05AM	3:20PM	CNX	1 2 3 4 5 ••
	WS84	11:40AM	4:05PM	2 STOPS	••••••6•
	WS613/144	6:20PM	10:20PM	CNX	1 2 3 4 5 ••
	WS607/49	7:40PM	10:30PM	CNX	•••••••7
CALGARY	WS553	10:05AM	12:10PM	N/S	1 2 3 4 5 ••
	WS84	11:40AM	2:40PM	1 STOP	••••••6•
	WS197/46	12:55PM	4:38PM	CNX	1 2 3 4 5 ••
	WS511	4:20PM	7:40PM	1 STOP	•••••••7
	WS601	6:15PM	8:20PM	N/S	••••••6•
	WS613	6:20PM	8:25PM	N/S	1 2 3 4 5 ••
	WS607	7:40PM	9:45PM	N/S	•••••••7
COMOX	WS84/384	11:40AM	4:55PM	CNX/1	••••••6•
EDMONTON	WS197	12:55PM	2:58PM	N/S	1 2 3 4 5 ••
	WS613	6:20PM	8:23PM	N/S	••••••6•
	WS533	7:10PM	9:13PM	N/S	1 2 3 4 5 ••
	WS613	7:30PM	9:33PM	N/S	•••••••7
FORT MCMURRAY	WS197/86	12:55PM	4:45PM	CNX	••••4•••
	WS613/103	7:30PM	10:50PM	CNX	•••••••7
GANDER	WS616/798	12:55PM	9:40PM	CNX	1 • 3 • 5 ••
HALIFAX	WS616	12:55PM	3:58PM	N/S	1 2 3 4 5 6 •
	WS616	2:05PM	5:08PM	N/S	•••••••7
KELOWNA	WS553/106	10:05AM	12:35PM	CNX	1 2 3 4 5 ••
	WS84/503	11:40AM	4:35PM	CNX/1	••••••6•
	WS197/31	12:55PM	4:25PM	CNX	1 2 3 4 5 ••
	WS511/301	4:20PM	9:00PM	CNX/1	•••••••7
MONCTON	WS568	1:00PM	3:55PM	N/S	1 2 3 4 5 6 •
	WS605	2:10PM	5:05PM	N/S	•••••••7
PRINCE GEORGE	WS553/167/143	10:05AM	4:50PM	2CNX	1 2 3 4 5 ••
REGINA	WS84/162	11:40AM	7:58PM	CNX/1	••••••6•
	WS511/301	4:20PM	6:40PM	CNX	•••••••7
	WS131	4:30PM	6:40PM	1 STOP	1 2 3 4 5 ••
	WS613/278	6:20PM	10:18PM	CNX	••••••5•
	WS613/356	6:20PM	10:22PM	CNX	1 2 3 4 •••
SASKATOON	WS553/454	10:05AM	2:08PM	CNX	1 2 3 4 5 ••
	WS511/723	4:20PM	9:05PM	CNX	•••••••7
	WS131/723	4:30PM	7:00PM	CNX	1 2 3 4 5 ••
	WS607/98	7:40PM	11:13PM	CNX	••~•••••7
ST. JOHN'S	WS616/798	12:55PM	9:45PM	CNX	• 2 • 4 • 6 •
	WS616/650	2:05PM	9:45PM	CNX	••~•••••7
THUNDER BAY	WS84	11:40AM	1:22PM	N/S	••~••••6•
	WS833	6:15PM	8:00PM	N/S	1 2 3 4 5 ••
	WS689	7:25PM	9:10PM	N/S	••~•••••7
VANCOUVER	WS553/167	10:05AM	1:25PM	CNX	1 2 3 4 5 ••
	WS84/598	11:40AM	4:15PM	CNX/1	••~••••6•
	WS197/76	12:55PM	4:03PM	CNX	1 2 3 • 5 ••
	WS511	4:20PM	8:35PM	2 STOPS	••~•••••7
	WS613	6:20PM	9:30PM	1 STOP	••~•••5••
VICTORIA	WS84/503	11:40AM	5:55PM	CNX/2	••~••••6•
	WS197/192	12:55PM	5:34PM	CNX	1 2 3 4 5 ••
	WS511/66/267	4:20PM	9:54PM	2CNX/1	••~•••••7
	WS613/531	6:20PM	9:40PM	CNX	1 2 3 4 5 ••
WINNIPEG	WS511	4:20PM	5:50PM	N/S	••~•••••7
	WS131	4:30PM	6:00PM	N/S	1 2 3 4 5 ••
	WS436	6:15PM	7:50PM	N/S	••~••••6•

\*Monday/lundi=1, Tuesday/mardi=2, Wednesday/mercredi=3, Thursday/jeudi=4, Friday/vendredi=5, Saturday/samedi=6, Sunday/dimanche=7





# Kelowna to/à:

	FLIGHT NO./ NO DE VOL	DÉPARTS/ DEPART	ARRIVÉE/ ARRIVEE	STOPS/ ARRÊT	*DAYS/ JOURS	
CALGARY	WS713	7:00AM	8:55AM	N/S	1 2 3 4 5 ••	
	WS454	10:30AM	12:25PM	N/S	1 2 3 4 5 ••	
	WS549	10:30AM	12:25PM	N/S	•••••6•	
	WS716	10:30AM	12:25PM	N/S	•••••7	
	WS592	12:25PM	2:20PM	N/S	•••••7	
	WS142	1:40PM	3:35PM	N/S	•••••6•	
	WS112	4:15PM	6:10PM	N/S	1 2 3 4 5 ••	
	WS66	5:20PM	7:15PM	N/S	•••••7	
	WS206	5:35PM	7:30PM	N/S	•••••6•	
	WS523	7:45PM	9:40PM	N/S	•••••7	
	WS155	7:55PM	9:50PM	N/S	•••••5••	
	COMOX	WS716/150	10:30AM	2:45PM	CNX	•••••7
		WS142/384	1:40PM	4:55PM	CNX	•••••6•
	EDMONTON	WS26	10:00AM	12:00PM	N/S	•••••7
WS12		10:25AM	12:25PM	N/S	1 2 3 4 5 6 •	
WS592/115		12:25PM	3:35PM	CNX	•••••7	
WS638		1:00PM	3:00PM	N/S	1 2 3 4 5 ••	
WS714		2:55PM	4:55PM	N/S	•••••6•	
WS66		5:20PM	8:50PM	1 STOP	•••••7	
WS422		6:55PM	8:55PM	N/S	1 2 3 4 5 ••	
WS172		7:20PM	9:20PM	N/S	•••••7	
FORT MCMURRAY		WS638/86	1:00PM	4:45PM	CNX	••••4•••
		WS172/103	7:20PM	10:50PM	CNX	•••••7
GANDER	WS713/650/798	7:00AM	9:40PM	2CNX/1	1 • 3 • 5 ••	
GRANDE PRAIRIE	WS12/34	10:25AM	2:13PM	CNX	1 2 3 4 5 ••	
	WS12/148	10:25AM	3:48PM	CNX	•••••6•	
	WS592/115	12:25PM	4:58PM	CNX/1	•••••7	
HALIFAX	WS713/650/798	7:00AM	7:20PM	2CNX	1 2 3 4 5 ••	
	D WS713/822	7:00AM	7:45PM	CNX	1 2 3 4 5 ••	
	WS44/628	8:20AM	10:00PM	CNX/1	1 2 3 4 5 ••	
	WS57/628	9:00AM	10:00PM	CNX/1	•••••6•	
	WS78/628	9:35AM	10:00PM	CNX/1	•••••7	
	WS523/652/546	7:45PM	2:05PM+1	2CNX/1	•••••7	
	WS155/652/546	7:55PM	2:15PM+1	2CNX/1	•••••5••	
HAMILTON	WS454/554	10:30AM	6:40PM	CNX	1 2 3 4 5 ••	
	WS716/554	10:30AM	6:40PM	CNX	•••••7	
LONDON	WS454/561	10:30AM	8:15PM	CNX	1 • 3 • 5 ••	
	WS592/561	12:25PM	9:15PM	CNX	•••••7	
MONCTON	WS454/668	10:30AM	9:45PM	CNX/1	1 2 3 4 5 ••	
	WS549/668	10:30AM	9:45PM	CNX/1	•••••6•	
	WS716/668	10:30AM	9:45PM	CNX/1	•••••7	
MONTRÉAL	WS713/650/654	7:00AM	5:45PM	2CNX	1 2 3 4 5 ••	
	WS454/668	10:30AM	6:57PM	CNX	1 2 3 4 5 ••	
	WS549/668	10:30AM	6:57PM	CNX	•••••6•	
	WS716/668	10:30AM	6:57PM	CNX	•••••7	
	WS523/652/660	7:45PM	9:10AM+1	2CNX	•••••7	
	WS155/652/660	7:55PM	9:10AM+1	2CNX	•••••5••	
OTTAWA	WS713/540	7:00AM	4:05PM	CNX	1 2 3 4 5 ••	
	WS26/644	10:00AM	7:38PM	CNX	•••••7	
	WS549/559/448	10:30AM	8:35PM	2CNX	•••••6•	
	WS454/661	10:30AM	8:35PM	CNX/1	1 2 3 4 5 ••	
	WS523/652/583	7:45PM	8:05AM+1	2CNX	•••••7	
PRINCE GEORGE	WS155/652/693	7:55PM	8:00AM+1	2CNX	•••••5••	
	WS57	9:00AM	11:30AM	1 STOP	•••••6•	
	WS65/411	2:40PM	6:05PM	CNX	•••••7	
REGINA	WS31/376	4:55PM	8:00PM	CNX	1 2 3 4 5 ••	
	WS68/319	5:40PM	9:10PM	CNX	•••••7	
	WS713/210	7:00AM	12:58PM	CNX	1 2 3 4 5 ••	
	WS26	10:00AM	1:40PM	1 STOP	•••••7	
	WS12	10:25AM	2:05PM	1 STOP	1 2 3 4 5 6 •	
WS142/162	1:40PM	7:58PM	CNX	•••••6•		
WS112/256	4:15PM	8:13PM	CNX	1 2 3 4 5 ••		
WS66/116	5:20PM	9:03PM	CNX	•••••7		

Continued on next page • Page suivante

\*Monday/lundi=1, Tuesday/mardi=2, Wednesday/mercredi=3, Thursday/jeudi=4, Friday/vendredi=5, Saturday/samedi=6, Sunday/dimanche=7

# Kelowna to/à: continued/suite

	FLIGHT NO./ NO DE VOL	DÉPARTS/ DEPART	ARRIVÉE/ ARRIVEE	STOPS/ ARRÊT	*DAYS/ JOURS	
SASKATOON	WS713/28	7:00AM	10:23AM	CNX	1 2 3 4 5 ••	
	WS716	10:30AM	1:58PM	1 STOP	•••••7	
	WS454	10:30AM	2:08PM	1 STOP	1 2 3 4 5 ••	
	WS549	10:30AM	2:08PM	1 STOP	•••••6•	
	WS112/178	4:15PM	8:38PM	CNX	1 2 3 4 5 ••	
	WS523/98	7:45PM	11:13PM	CNX	•••••7	
	ST. JOHN'S	F WS713/826	7:00AM	9:10PM	CNX	• 2 • 4 ••••
		WS713/650/798	7:00AM	9:45PM	2CNX/1	• 2 • 4 ••••
	THUNDER BAY	WS713/732	7:00AM	2:53PM	CNX/1	1 2 3 4 5 ••
	TORONTO	WS713/650	7:00AM	3:50PM	CNX	1 2 3 4 5 ••
WS454/661		10:30AM	6:50PM	CNX	1 2 3 4 5 ••	
WS549/559		10:30AM	6:50PM	CNX	•••••6•	
WS716/661		10:30AM	6:50PM	CNX	•••••7	
WS549/674		10:30AM	8:15PM	CNX	•••••6•	
WS592/604		12:25PM	9:05PM	CNX	•••••7	
WS638/198		1:00PM	11:20PM	CNX/1	1 2 3 4 5 ••	
WS523/652		7:45PM	6:35AM+1	CNX	•••••7	
WS155/652		7:55PM	6:35AM+1	CNX	•••••5••	
VANCOUVER		WS44	8:20AM	9:10AM	N/S	1 2 3 4 5 ••
	WS57	9:00AM	9:50AM	N/S	•••••6•	
	WS78	9:35AM	10:25AM	N/S	•••••7	
	WS65	2:40PM	3:30PM	N/S	•••••7	
	WS31	4:55PM	5:45PM	N/S	1 2 3 4 5 6 •	
	WS68	5:40PM	6:30PM	N/S	•••••7	
VICTORIA	WS717	4:45PM	5:35PM	N/S	•••••7	
	WS503	5:05PM	5:55PM	N/S	1 2 3 4 5 6 •	
WINDSOR	WS454/706	10:30AM	8:10PM	CNX	• 2 • 4 ••••	
	WS549/706	10:30AM	9:00PM	CNX	•••••6•	
WINNIPEG	WS713/732	7:00AM	12:15PM	CNX	1 2 3 4 5 ••	
	WS57/448	9:00AM	3:10PM	CNX	•••••6•	
	WS78/757	9:35AM	4:05PM	CNX	•••••7	
	WS454/404	10:30AM	4:05PM	CNX	1 2 3 4 5 ••	
	WS592/510	12:25PM	7:35PM	CNX	•••••7	
	WS638/198	1:00PM	7:33PM	CNX	1 2 3 4 5 ••	
	WS142/774	1:40PM	7:25PM	CNX	•••••6•	
	WS112/212	4:15PM	10:10PM	CNX	1 2 3 • 5 ••	
WS31/278	4:55PM	11:55PM	CNX/1	••••4•••		
WS66/278	5:20PM	11:54PM	CNX	•••••7		

\*Monday/lundi=1, Tuesday/mardi=2, Wednesday/mercredi=3, Thursday/jeudi=4, Friday/vendredi=5, Saturday/samedi=6, Sunday/dimanche=7

More miles.

More smiles.



Earn valuable AIR MILES® reward miles when you book your flights online at [westjet.com](http://westjet.com).

**WESTJET**

® Trademarks of AIR MILES International Trading B.V. Used under license by Loyalty Management Group Canada Inc. and WestJet.



# First Class

To enjoy the suite life or for more SkyBox information, please contact Premium Seating at (416) 341-3165 or email your request to [skyboxrentals@skydome.com](mailto:skyboxrentals@skydome.com).

**SKYBOX**  
premium suite program



## London to/à:

	FLIGHT NO./ NO DE VOL	DÉPARTS/ DÉPART	ARRIVÉS/ ARRIVÉE	STOPS/ ARRÊT	*DAYS/ JOURS
ABBOTSFORD	WS558/83	7:30AM	12:10PM	CNX	1 2 • 4 • • •
	WS558/83	8:50AM	12:15PM	CNX	• • • • • 6 •
	WS107/105/467	2:20PM	7:00PM	2CNX	1 2 3 4 5 • •
	WS301/511/49	4:40PM	10:30PM	2CNX	• • • • • 7
CALGARY	WS558	7:30AM	9:30AM	N/S	1 2 • 4 • • •
	WS558	8:50AM	10:50AM	N/S	• • • • • 6 •
	WS107/105	2:20PM	5:39PM	CNX	1 2 3 4 5 • •
	WS301/511	4:40PM	7:40PM	CNX	• • • • • 7
COMOX	WS558/384	8:50AM	4:55PM	CNX	• • • • • 6 •
	WS107/105/271	2:20PM	6:50PM	2CNX	• • • • • 5 • •
EDMONTON	WS558/34	7:30AM	12:55PM	CNX	1 2 • 4 • • •
	WS558/148	8:50AM	2:30PM	CNX	• • • • • 6 •
	WS107/773	2:20PM	5:30PM	CNX	1 2 3 4 5 • •
FORT MCMURRAY	WS301/103	4:40PM	9:35PM	CNX/2	• • • • • 7
	WS558/34/86	7:30AM	4:45PM	2CNX	• • • • 4 • • •
	WS107/773/29	2:20PM	7:05PM	2CNX	1 2 3 4 5 • •
GRANDE PRAIRIE	WS301/103	4:40PM	10:50PM	CNX/3	• • • • • 7
	WS558/34	7:30AM	2:13PM	CNX/1	1 2 • 4 • • •
	WS558/148	8:50AM	3:48PM	CNX/1	• • • • • 6 •
KELOWNA	WS558/106	7:30AM	12:35PM	CNX	1 2 • 4 • • •
	WS558/80/142	8:50AM	1:15PM	2CNX	• • • • • 6 •
	WS301	4:40PM	9:00PM	3 STOPS	• • • • • 7
PRINCE GEORGE	WS558/663/143	7:30AM	4:50PM	2CNX	1 2 • 4 • • •
REGINA	WS558/210	7:30AM	12:58PM	CNX	1 2 • 4 • • •
	WS107/131	2:20PM	6:40PM	CNX	1 2 3 4 5 • •
	WS301	4:40PM	6:40PM	1 STOP	• • • • • 7
SASKATOON	WS558/454	7:30AM	2:08PM	CNX	1 2 • 4 • • •
	WS558/549	8:50AM	2:08PM	CNX	• • • • • 6 •
	WS107	2:20PM	4:40PM	1 STOP	1 2 3 4 5 • •
VANCOUVER	WS301/723	4:40PM	9:05PM	CNX	• • • • • 7
	WS558/95	7:30AM	11:15AM	CNX	1 2 • 4 • • •
	WS558/80	8:50AM	11:55AM	CNX	• • • • • 6 •
	WS107/781	2:20PM	5:25PM	CNX	1 2 3 4 5 • •
VICTORIA	WS301/511	4:40PM	8:35PM	CNX/1	• • • • • 7
	WS558/89	7:30AM	10:45AM	CNX	1 2 • 4 • • •
	WS558/43	8:50AM	12:00PM	CNX	• • • • • 6 •
	WS107/105/651	2:20PM	8:00PM	2CNX	• • • • • 5 • •
WINNIPEG	WS107/131/531	2:20PM	9:40PM	2CNX/1	1 2 3 4 5 • •
	WS107	2:20PM	3:47PM	N/S	1 2 3 4 5 • •
	WS301	4:40PM	6:07PM	N/S	• • • • • 7

## Moncton to/à:

	FLIGHT NO./ NO DE VOL	DÉPARTS/ DÉPART	ARRIVÉS/ ARRIVÉE	STOPS/ ARRÊT	*DAYS/ JOURS
ABBOTSFORD	WS667/83	7:00AM	12:10PM	CNX/1	1 2 3 4 5 • •
	WS667/83	7:00AM	12:15PM	CNX/1	• • • • • 6 •
	WS667/101	7:00AM	3:25PM	CNX/1	• • • • • 7
	F WS829/83	8:25AM	12:10PM	CNX	• 2 • 4 • • •
F WS829/83	8:25AM	12:15PM	CNX	• • • • • 6 •	
	WS833/613/144	4:25PM	10:20PM	2CNX	1 2 3 4 5 • •
	WS689/607/49	5:35PM	10:30PM	2CNX	• • • • • 7
CALGARY	WS667	7:00AM	10:53AM	1 STOP	1 2 3 4 5 6 7
	F WS829	8:25AM	11:05AM	N/S	• 2 • 4 • 6 •
	WS601	4:25PM	8:20PM	1 STOP	• • • • • 6 •
	WS833/613	4:25PM	8:25PM	CNX	1 2 3 4 5 • •
	WS689/607	5:35PM	9:45PM	CNX	• • • • • 7
COMOX	WS667/150	7:00AM	2:45PM	CNX/1	• • • • • 7
EDMONTON	WS667/34	7:00AM	12:55PM	CNX/1	1 2 3 4 5 • •
	F WS829/34	8:25AM	12:55PM	CNX	• 2 • 4 • • •
	WS601/613	4:25PM	8:23PM	CNX	• • • • • 6 •
	WS833/533	4:25PM	9:13PM	CNX	1 2 3 4 5 • •
	WS689/613	5:35PM	9:33PM	CNX	• • • • • 7

Continued on next page • Page suivante

\*Monday/lundi=1, Tuesday/mardi=2, Wednesday/mercredi=3, Thursday/jeudi=4, Friday/vendredi=5, Saturday/samedi=6, Sunday/dimanche=7



# Moncton to/à: *continued/suite*

	FLIGHT NO./ NO DE VOL	DÉPARTS/ DÉPART	ARRIVÉES/ ARRIVÉE	STOPS/ ARRÊT	*DAYS/ JOURS	
FORT MCMURRAY	WS667/29	7:00AM	7:05PM	CNX/2	1 2 3 4 5 ..	
	F WS829/29	8:25AM	7:05PM	CNX/1	.. 2 . 4 . . . .	
	WS689/613/103	5:35PM	10:50PM	2CNX	.. . . . . . 7	
GRANDE PRAIRIE	WS667/34	7:00AM	2:13PM	CNX/2	1 2 3 4 5 ..	
	WS667/148	7:00AM	3:48PM	CNX/2	.. . . . . 6 .	
	WS667/115	7:00AM	4:58PM	CNX/2	.. . . . . . 7	
	F WS829/34	8:25AM	2:13PM	CNX/1	.. 2 . 4 . . . .	
	F WS829/148	8:25AM	3:48PM	CNX/1	.. . . . . 6 .	
HAMILTON	WS601	4:25PM	5:35PM	N/S	.. . . . . 6 .	
	WS833	4:25PM	5:35PM	N/S	1 2 3 4 5 ..	
	WS689	5:35PM	6:45PM	N/S	.. . . . . . 7	
KELOWNA	WS667/106	7:00AM	12:35PM	CNX/1	1 2 3 4 5 ..	
	WS667/717	7:00AM	4:15PM	CNX/1	.. . . . . . 7	
	WS667/503	7:00AM	4:35PM	CNX/1	1 2 3 4 5 6 .	
	F WS829/106	8:25AM	12:35PM	CNX	.. 2 . 4 . . . .	
	F WS829/80/142	8:25AM	1:15PM	2CNX	.. . . . . 6 .	
MONTREAL	WS667	7:00AM	7:35AM	N/S	1 2 3 4 5 6 7	
PRINCE GEORGE	WS667/102/143	7:00AM	4:50PM	2CNX/1	1 2 3 4 5 ..	
	WS667/663/143	7:00AM	4:50PM	2CNX/1	1 2 3 4 5 ..	
	WS667/415/411	7:00AM	6:05PM	2CNX/1	.. . . . . . 7	
	F WS829/663/143	8:25AM	4:50PM	2CNX	.. 2 . 4 . . . .	
	REGINA	WS667/210	7:00AM	12:58PM	CNX/1	1 2 3 4 5 ..
REGINA	WS667/20	7:00AM	1:38PM	CNX/1	.. . . . . . 7	
	F WS829/210	8:25AM	12:58PM	CNX	.. 2 . 4 . . . .	
	WS833/613/278	4:25PM	10:18PM	2CNX	.. . . . 5 . .	
	WS833/613/356	4:25PM	10:22PM	2CNX	1 2 3 4 . . . .	
	SASKATOON	WS667/716	7:00AM	1:58PM	CNX/1	.. . . . . . 7
SASKATOON	WS667/454	7:00AM	2:08PM	CNX/1	1 2 3 4 5 ..	
	WS667/549	7:00AM	2:08PM	CNX/1	.. . . . . 6 .	
	F WS829/454	8:25AM	2:08PM	CNX	.. 2 . 4 . . . .	
	F WS829/549	8:25AM	2:08PM	CNX	.. . . . . 6 .	
	WS689/607/98	5:35PM	11:13PM	2CNX	.. . . . . . 7	
THUNDER BAY	WS667/602	7:00AM	11:55AM	CNX/1	1 2 3 4 5 ..	
	WS833	4:25PM	8:00PM	1 STOP	1 2 3 4 5 ..	
	WS689	5:35PM	9:10PM	1 STOP	.. . . . . . 7	
TORONTO	WS667/602	7:00AM	9:40AM	CNX	1 2 3 4 5 6 .	
TORONTO	WS667/671	7:00AM	10:55AM	CNX	1 2 3 4 5 6 7	
	WS667/629	7:00AM	10:40AM	CNX	1 2 3 4 5 6 7	
VANCOUVER	F WS829/80	8:25AM	11:55AM	CNX	.. . . . . 6 .	
	F WS829/663	8:25AM	12:25PM	CNX	.. 2 . 4 . . . .	
	WS833/613	4:25PM	9:30PM	CNX/1	.. . . . 5 . .	
	VICTORIA	WS667/43	7:00AM	12:00PM	CNX/1	.. . . . . 6 .
	WS667/541	7:00AM	2:00PM	CNX/1	.. . . . . . 7	
VICTORIA	WS667/255	7:00AM	3:50PM	CNX/1	1 2 3 4 5 ..	
	F WS829/43	8:25AM	12:00PM	CNX	.. . . . . 6 .	
	F WS829/255	8:25AM	3:50PM	CNX	.. 2 . 4 . . . .	
	WS833/613/531	4:25PM	9:40PM	2CNX	1 2 3 4 5 ..	
	WINNIPEG	WS667/602	7:00AM	12:35PM	CNX/2	1 2 3 4 5 ..
WINNIPEG	WS667/633	7:00AM	2:15PM	CNX	.. . . . . . 7	
	WS601/436	4:25PM	7:50PM	CNX	.. . . . . 6 .	

\*Monday/lundi=1, Tuesday/mardi=2, Wednesday/mercredi=3, Thursday/jeudi=4, Friday/vendredi=5, Saturday/samedi=6, Sunday/dimanche=7

## Cargo flies WestJet too.

**ELS**  
MARKETING INC  
info@elsmarketing.com

proud member of  
**core**  
logistics international inc.  
www.corelogistics.net



**CALL 1-866-WJCARGO**  
(952-2746)

Today Grandma taught me how to FLY



For nearly 2 decades Fitter has been dedicated to helping people of all ages live long, healthy and active lives.

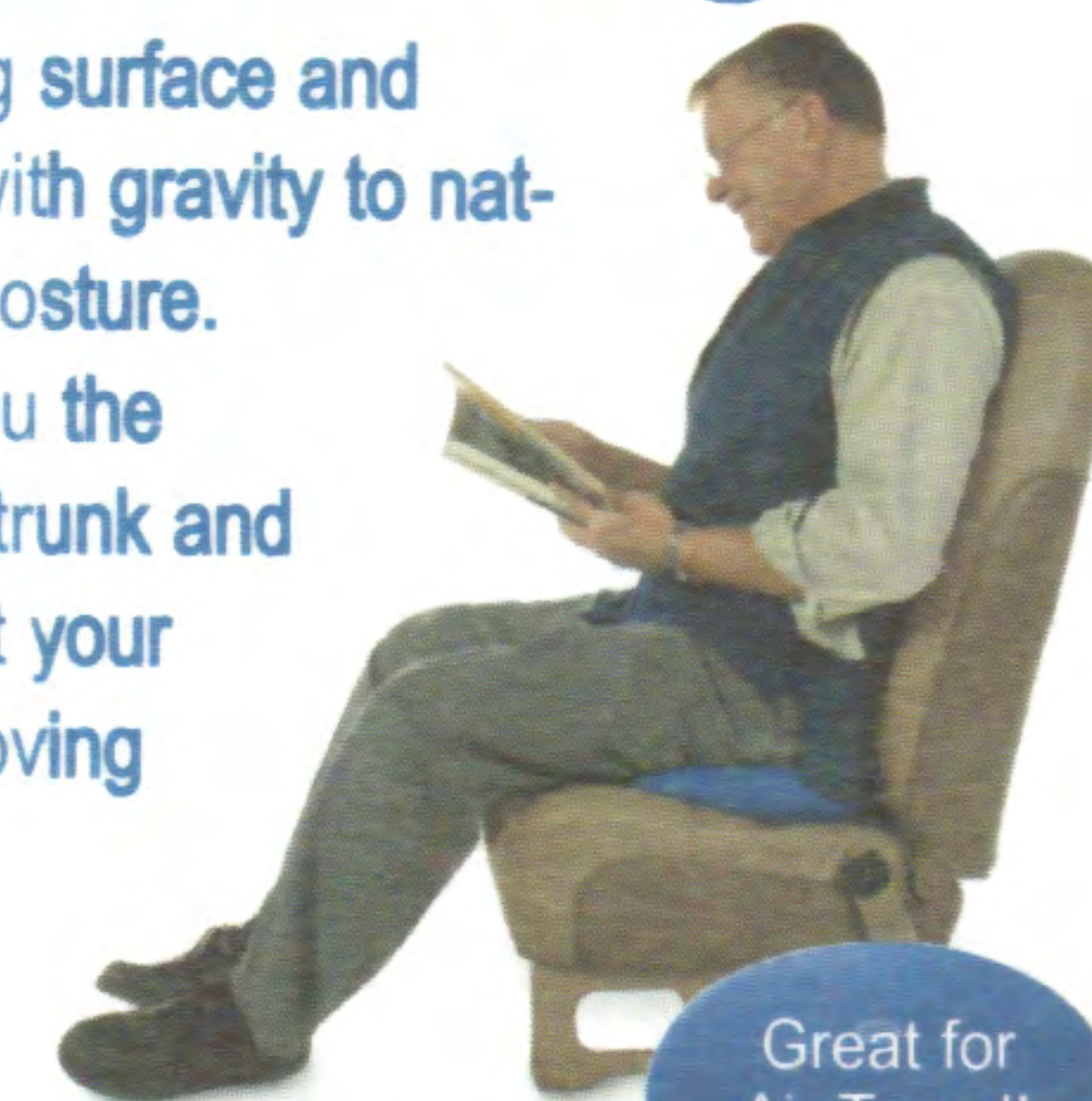
We are committed to helping people age gracefully and make the most of each day. We offer a wide range of products to improve S.A.M. (Stability Agility & Mobility) and educational materials to promote a healthy lifestyle.

So whether you're the pilot or the passenger, Fitter can help you prepare for takeoff.

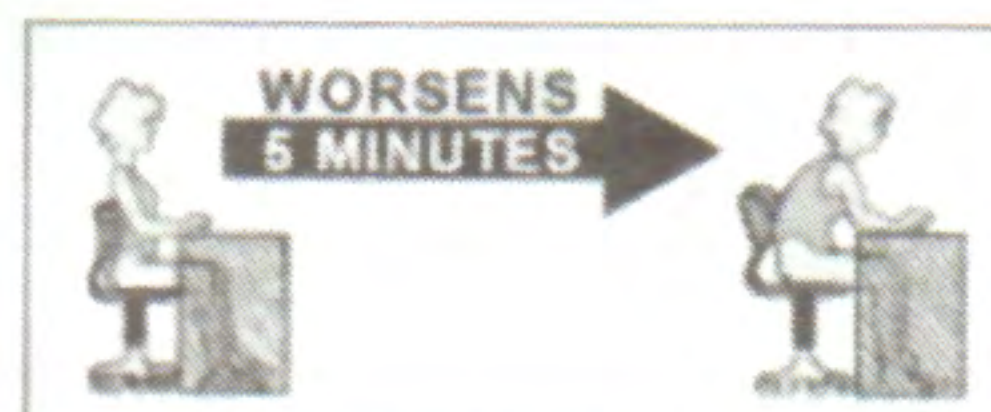
## FOR WORK, PLAY & TRAVEL Benefits of "Active Sitting"



Sit on an active sitting surface and your spine will work with gravity to naturally find your best posture. Active sitting gives you the freedom to shift your trunk and subconsciously adjust your sitting position - improving your relationship with gravity and toning your core muscles all day long!



Great for Air Travel!



Use a Balance Board as a footrest or as a dynamic standing surface while talking on the phone. Perfect for use at home or in the office!



Make your workday FUNctional!

**fitterfirst.**  
balance and fitness for life

Learn more at [www.fitter1.com](http://www.fitter1.com) & get your free 24 pg. catalog.

SITTING  
Active vs. Static  
Good posture & core strength | Poor posture & back pain

3050 - 2600 Portland St. SE  
Calgary, AB Canada T2G 4M6

1-800-fitter-1

CODE  
WESJ04



**OUR DESTINATIONS NOS DESTINATIONS**



**WESTJET**  
*Value in Canada's skies*





# Montréal to/à:

	FLIGHT NO./ NO DE VOL	DEPARTS/ DÉPART	ARRIVES/ ARRIVÉE	STOPS/ ARRÊT	*DAYS/ JOURS
ABBOTSFORD	WS667/83	8:20AM	12:10PM	CNX	1 2 3 4 5 ••
	WS667/83	8:20AM	12:15PM	CNX	•••••6•
	WS671/439	9:40AM	3:20PM	CNX/1	1 2 3 4 5 ••
	WS671/101	9:40AM	3:25PM	CNX/1	•••••7
	WS671/84	9:40AM	4:05PM	CNX/1	•••••6•
	WS651/144	3:00PM	10:20PM	CNX/1	1 2 3 4 5 ••
	WS797/49	4:00PM	10:30PM	CNX	•••••7
CALGARY	WS667	8:20AM	10:53AM	N/S	1 2 3 4 5 6 7
	WS671	9:40AM	1:45PM	1 STOP	1 2 3 4 5 6 7
	WS611/699	11:10AM	3:15PM	CNX	1 2 3 4 5 ••
	WS781/105	1:55PM	5:39PM	CNX	1 2 3 4 5 ••
	WS651	3:00PM	7:00PM	1 STOP	1 2 3 4 5 6 7
	WS797	4:00PM	6:33PM	N/S	•••••7
	WS685/341	4:15PM	7:39PM	CNX	•••••6•
COMOX	WS662	6:15PM	10:15PM	1 STOP	1 2 3 4 5 ••
	WS671/150	9:40AM	2:45PM	CNX/1	•••••7
	WS671/384	9:40AM	4:55PM	CNX/1	•••••6•
EDMONTON	WS781/105/271	1:55PM	6:50PM	2CNX	••••5••
	WS677	7:00AM	11:10AM	1 STOP	•••••6•
FORT MCMURRAY	WS667/34	8:20AM	12:55PM	CNX	1 2 3 4 5 ••
	WS667/148	8:20AM	2:30PM	CNX	•••••6•
	WS671/115	9:40AM	3:35PM	CNX/1	•••••7
	WS633/68	12:20PM	4:30PM	CNX/1	•••••7
	WS781/773	1:55PM	5:30PM	CNX	1 2 3 4 5 ••
	WS651/687	3:00PM	6:55PM	CNX	•••••6•
	E WS843/719	4:00PM	7:55PM	CNX	•••••7
	E WS843/655	4:00PM	8:50PM	CNX	1 2 3 4 5 ••
	WS611/699/29	11:10AM	7:05PM	2CNX/1	1 2 3 4 5 ••
	WS633/758/146	12:20PM	8:05PM	2CNX	•••••7
GANDER	WS781/773/29	1:55PM	7:05PM	2CNX	1 2 3 4 5 ••
	WS797/103	4:00PM	10:50PM	CNX/1	•••••7
	WS611/798	11:10AM	9:40PM	CNX/1	1 • 3 • 5 ••
GRANDE PRAIRIE	WS667/34	8:20AM	2:13PM	CNX/1	1 2 3 4 5 ••
	WS667/148	8:20AM	3:48PM	CNX/1	•••••6•
	WS671/115	9:40AM	4:58PM	CNX/2	•••••7
HALIFAX	WS628	7:30PM	10:00PM	N/S	1 2 3 4 5 6 7
KELOWNA	WS629/592	8:15AM	12:00PM	CNX	•••••7
	WS629/142	8:15AM	1:15PM	CNX	•••••6•
	WS667/106	8:20AM	12:35PM	CNX	1 2 3 4 5 ••
	WS671/717	9:40AM	4:15PM	CNX/1	•••••7
	WS671/503	9:40AM	4:35PM	CNX/1	1 2 3 4 5 6 •
	WS611/699/503	11:10AM	4:35PM	2CNX	1 2 3 4 5 ••
	WS651/139	3:00PM	7:30PM	CNX/1	1 2 3 4 5 ••
MONCTON	WS797	4:00PM	7:15PM	1 STOP	•••••7
	WS668	7:30PM	9:45PM	N/S	1 2 3 4 5 6 7
PRINCE GEORGE	WS667/663/143	8:20AM	4:50PM	2CNX	1 2 3 4 5 ••
	WS671/411	9:40AM	6:05PM	CNX/2	•••••7
	WS781/376	1:55PM	8:00PM	CNX/1	1 2 3 4 5 ••
REGINA	WS667/210	8:20AM	12:58PM	CNX	1 2 3 4 5 ••
	WS667/20	8:20AM	1:38PM	CNX	•••••7
	WS671/162	9:40AM	7:58PM	CNX/1	•••••6•
	WS651/723/131	3:00PM	6:40PM	2CNX	1 2 3 4 5 ••
	WS797/116	4:00PM	9:03PM	CNX	•••••7
SASKATOON	WS667/716	8:20AM	1:58PM	CNX	•••••7
	WS667/454	8:20AM	2:08PM	CNX	1 2 3 4 5 ••
	WS667/549	8:20AM	2:08PM	CNX	•••••6•
	WS633/68	12:20PM	3:00PM	CNX	•••••7
	WS781/107	1:55PM	4:40PM	CNX	1 2 3 4 5 ••
	WS651/723	3:00PM	7:00PM	CNX/1	1 2 3 4 5 ••
	WS797/85	4:00PM	8:03PM	CNX	•••••7
ST. JOHN'S	WS611/798	11:10AM	9:45PM	CNX/1	• 2 • 4 •••
THUNDER BAY	WS602	8:25AM	11:55AM	1 STOP	1 2 3 4 5 ••
	WS651/569	3:00PM	7:30PM	CNX	1 2 3 4 5 ••
	WS651/695	3:00PM	7:30PM	CNX	•••••6•
	E WS843/569	4:00PM	7:30PM	CNX	1 2 3 4 5 ••
	E WS843/695	4:00PM	7:30PM	CNX	•••••6•
	WS764/759	6:15PM	9:55PM	CNX	•••••7

Continued on next page • Page suivante

\*Monday/lundi=1, Tuesday/mardi=2, Wednesday/mercredi=3, Thursday/jeudi=4, Friday/vendredi=5, Saturday/samedi=6, Sunday/dimanche=7

# Montréal to/à: continued/suite

	FLIGHT NO./ NO DE VOL	DEPARTS/ DÉPART	ARRIVES/ ARRIVÉE	STOPS/ ARRÊT	*DAYS/ JOURS
TORONTO	WS659	7:00AM	8:15AM	N/S	1 2 3 4 5 • 7
	WS677	7:00AM	8:15AM	N/S	•••••6•
	WS602	8:25AM	9:40AM	N/S	1 2 3 4 5 6 •
	WS671	9:40AM	10:55AM	N/S	1 2 3 4 5 6 7
	WS611	11:10AM	12:25PM	N/S	1 2 3 4 5 ••
	WS651	3:00PM	4:15PM	N/S	1 2 3 4 5 6 7
	E WS843	4:00PM	5:15PM	N/S	1 2 3 4 5 6 7
VANCOUVER	WS662	6:15PM	7:30PM	N/S	1 2 3 4 5 6 •
	WS764	6:15PM	7:30PM	N/S	•••••7
	WS629	8:15AM	10:40AM	N/S	1 2 3 4 5 6 7
VICTORIA	B WS671/817	9:40AM	1:30PM	CNX	1 2 3 4 5 6 7
	WS781	1:55PM	5:25PM	1 STOP	1 2 3 4 5 ••
WINNIPEG	E WS845	7:30PM	9:55PM	N/S	1 2 3 4 5 6 7
	WS659/663/541	7:00AM	2:00PM	2CNX	•••••7
	WS667/43	8:20AM	12:00PM	CNX	•••••6•
	WS667/541	8:20AM	2:00PM	CNX	•••••7
	WS671/255	9:40AM	3:50PM	CNX/1	1 2 3 4 5 ••
	C WS651/821	3:00PM	7:05PM	CNX	1 2 3 4 5 6 7
	WS797/651	4:00PM	8:00PM	CNX	•••••7
VICTORIA	WS659	7:00AM	10:10AM	1 STOP	1 2 3 4 5 ••
	WS602/669	8:25AM	11:40AM	CNX	•••••6•
	WS602	8:25AM	12:35PM	2 STOPS	1 2 3 4 5 ••
	WS611/721	11:10AM	2:15PM	CNX	1 2 3 4 5 ••
	WS633	12:20PM	2:15PM	N/S	•••••7
	WS781	1:55PM	3:50PM	N/S	1 2 3 4 5 ••
	WS651/723	3:00PM	6:05PM	CNX	1 2 3 4 5 ••
	WS651/723	3:00PM	8:10PM	CNX	•••••7
	E WS843/723	4:00PM	8:10PM	CNX	•••••7
	WS685	4:15PM	6:10PM	N/S	•••••6•
WS764	6:15PM	9:30PM	1 STOP	•••••7	

# Ottawa to/à:

	FLIGHT NO./ NO DE VOL	DEPARTS/ DÉPART	ARRIVES/ ARRIVÉE	STOPS/ ARRÊT	*DAYS/ JOURS
ABBOTSFORD	WS663/83	7:00AM	12:10PM	CNX/1	1 2 3 4 5 ••
	WS663/83	7:00AM	12:15PM	CNX/1	•••••6•
	WS663/101	7:00AM	3:25PM	CNX/1	•••••7
	WS584/671/439	8:00AM	3:20PM	2CNX	1 2 3 4 5 ••
	B WS817/671/439	9:30AM	3:20PM	2CNX	1 2 3 4 5 ••
	B WS817/671/101	9:30AM	3:25PM	2CNX	•••••7
	WS619/699/84	10:35AM	4:05PM	2CNX	•••••6•
CALGARY	WS779/593	1:45PM	5:35PM	CNX	•••••7
	WS521/144	4:35PM	10:20PM	CNX	1 2 3 4 5 ••
	WS723/635/49	5:00PM	10:30PM	2CNX	•••••7
	WS663	7:00AM	11:15AM	1 STOP	1 2 3 4 5 6 7
	WS545/671	8:30AM	1:45PM	CNX	•••••6•
	B WS817/671	9:30AM	1:45PM	CNX	1 2 3 4 5 • 7
	WS619/699	10:35AM	3:15PM	CNX	•••••6•
COMOX	WS779	1:45PM	4:07PM	N/S	•••••7
	WS773/105	2:00PM	5:39PM	CNX	1 2 3 4 5 ••
	WS569/662	4:00PM	10:15PM	CNX	1 2 3 4 5 ••
	WS521	4:35PM	6:57PM	N/S	1 2 3 4 5 6 •
	WS723/635	5:00PM	8:55PM	CNX	••~••7
	WS673/662	5:45PM	10:15PM	CNX	1 2 3 4 5 ••
	WS663/150	7:00AM	2:45PM	CNX/1	••~••7
EDMONTON	B WS817/671/150	9:30AM	2:45PM	2CNX	••~••7
	B WS817/699/271	9:30AM	6:50PM	2CNX	••~•5••
	WS619/699/384	10:35AM	4:55PM	2CNX	••~••6•
THUNDER BAY	WS663/677	7:00AM	11:10AM	CNX	••~••6•
	WS645	8:35AM	10:52AM	N/S	1 2 3 4 5 ••
	WS645	11:00AM	1:17PM	N/S	••~••7
	WS773	2:00PM	5:30PM	1 STOP	1 2 3 4 5 ••
	WS132	2:00PM	6:14PM	2 STOPS	••~••6•

Continued on next page • Page suivante

\*Monday/lundi=1, Tuesday/mardi=2, Wednesday/mercredi=3, Thursday/jeudi=4, Friday/vendredi=5, Saturday/samedi=6, Sunday/dimanche=7



# Ottawa to/à: continued/suite

	FLIGHT NO./ NO DE VOL	DEPARTS/ DEPART	ARRIVES/ ARRIVEE	STOPS/ ARRÊT	*DAYS/ JOURS	
EDMONTON CONT.	WS569/655	4:00PM	8:50PM	CNX	1 2 3 4 5 ••	
	WS719	4:05PM	7:55PM	1 STOP	•••••••7	
FORT MCMURRAY	WS779/146	1:45PM	8:05PM	CNX/1	•••••••7	
	WS773/29	2:00PM	7:05PM	CNX/1	1 2 3 4 5 ••	
	WS719/103	4:05PM	10:50PM	CNX/1	•••••••7	
GANDER	WS798	2:30PM	9:40PM	2 STOPS	1 • 3 • 5 ••	
GRANDE PRAIRIE	WS663/148	7:00AM	3:48PM	CNX/2	••••••6•	
	WS645/34	8:35AM	2:13PM	CNX	1 2 3 4 5 ••	
	WS645/115	11:00AM	4:58PM	CNX	•••••••7	
HALIFAX	WS546	11:30AM	2:05PM	N/S	1 2 3 4 5 ••	
	WS546	11:40AM	2:15PM	N/S	••••••6•	
	WS798	2:30PM	7:20PM	1 STOP	1 2 3 4 5 ••	
KELOWNA	WS663/106	7:00AM	12:35PM	CNX/1	1 2 3 4 5 ••	
	WS584/671/503	8:00AM	4:35PM	2CNX	1 2 3 4 5 ••	
	B WS817/699/503	9:30AM	4:35PM	2CNX	1 2 3 4 5 ••	
	WS619/699/503	10:35AM	4:35PM	2CNX	••••••6•	
	WS645/65	11:00AM	2:10PM	CNX	•••••••7	
	WS521/139	4:35PM	7:30PM	CNX	1 2 3 4 5 ••	
PRINCE GEORGE	WS663/102/143	7:00AM	4:50PM	2CNX/1	1 2 3 4 5 ••	
	WS663/415/411	7:00AM	6:05PM	2CNX/1	•••••••7	
	B WS817/143	9:30AM	4:50PM	CNX/1	1 2 3 4 5 ••	
	WS779/23/319	1:45PM	9:10PM	2CNX	•••••••7	
WS773/781/376	2:00PM	8:00PM	2CNX	1 2 3 4 5 ••		
REGINA	WS663/210	7:00AM	12:58PM	CNX/1	1 2 3 4 5 ••	
	WS663/20	7:00AM	1:38PM	CNX/1	•••••••7	
	WS645/12	8:35AM	2:05PM	CNX	1 2 3 4 5 ••	
	WS619/699/162	10:35AM	7:58PM	2CNX	••••••6•	
	WS779/440	1:45PM	7:43PM	CNX	•••••••7	
	WS773/131	2:00PM	6:40PM	CNX	1 2 3 4 5 ••	
	WS521/278	4:35PM	10:18PM	CNX	•••••5••	
	WS521/356	4:35PM	10:22PM	CNX	1 2 3 4 ••••	
	WS723/635/302	5:00PM	10:42PM	2CNX	•••••••7	
	SASKATOON	WS663/716	7:00AM	1:58PM	CNX/1	•••••••7
		WS663/454	7:00AM	2:08PM	CNX/1	1 2 3 4 5 ••
		WS663/549	7:00AM	2:08PM	CNX/1	••••••6•
		WS773/107	2:00PM	4:40PM	CNX	1 2 3 4 5 ••
WS521/178		4:35PM	8:38PM	CNX	1 2 3 4 5 ••	
ST. JOHN'S	WS723	5:00PM	9:05PM	2 STOPS	•••••••7	
	WS546/798	11:40AM	9:45PM	CNX	••••••6•	
THUNDER BAY	WS798	2:30PM	9:45PM	2 STOPS	• 2 • 4 ••••	
	WS584/602	8:00AM	11:55AM	CNX	1 2 3 4 5 ••	
	WS132	2:00PM	3:50PM	N/S	••••••6•	
	WS569	4:00PM	7:30PM	1 STOP	1 2 3 4 5 ••	
	WS695	4:05PM	7:30PM	1 STOP	••••••6•	
TORONTO	WS691/759	6:30PM	9:55PM	CNX	•••••••7	
	WS663	7:00AM	8:09AM	N/S	1 2 3 4 5 6 7	
	WS584	8:00AM	9:09AM	N/S	1 2 3 4 5 ••	
	WS545	8:30AM	9:39AM	N/S	••••••6•	
	B WS817	9:30AM	10:39AM	N/S	1 2 3 4 5 •7	
	WS619	10:35AM	11:44AM	N/S	••••••6•	
	WS798	2:30PM	3:39PM	N/S	1 2 3 4 5 ••	
	WS569	4:00PM	5:09PM	N/S	1 2 3 4 5 ••	
	WS695	4:05PM	5:14PM	N/S	••••••6•	
	WS719	4:05PM	5:14PM	N/S	•••••••7	
	WS723	5:00PM	6:09PM	N/S	•••••••7	
	WS673	5:45PM	6:54PM	N/S	1 2 3 4 5 ••	
	WS691	6:30PM	7:39PM	N/S	•••••••7	
	WS733	7:05PM	8:14PM	N/S	•••••5••	
	VANCOUVER	WS663/677	7:00AM	12:14PM	CNX/1	••••••6•
		WS663	7:00AM	12:25PM	2 STOPS	1 2 3 4 5 ••
		WS663/415	7:00AM	2:25PM	CNX/1	••~•••••7
A WS800		8:00AM	10:18AM	N/S	1 2 3 4 5 6 7	
WS645/61		8:35AM	1:33PM	CNX	1 2 3 4 5 ••	
WS817	9:30AM	1:30PM	1 STOP	1 2 3 4 5 •7		

Continued on next page • Page suivante

\*Monday/lundi=1, Tuesday/mardi=2, Wednesday/mercredi=3, Thursday/jeudi=4, Friday/vendredi=5, Saturday/samedi=6, Sunday/dimanche=7

# Ottawa to/à: continued/suite

	FLIGHT NO./ NO DE VOL	DEPARTS/ DEPART	ARRIVES/ ARRIVEE	STOPS/ ARRÊT	*DAYS/ JOURS
VANCOUVER CONT.	WS619/699/598	10:35AM	4:15PM	2CNX	••••••6•
	WS645/518	11:00AM	3:33PM	CNX	••~•••••7
	WS779/23	1:45PM	5:45PM	CNX	••~•••••7
	WS773/781	2:00PM	5:25PM	CNX	1 2 3 4 5 ••
	WS719	4:05PM	8:59PM	2 STOPS	••~•••••7
	WS521	4:35PM	7:55PM	1 STOP	1 2 3 4 5 ••
	WS521/341	4:35PM	8:30PM	CNX	••~••••6•
	WS673/683	5:45PM	9:55PM	CNX	1 2 3 4 5 ••
	VICTORIA	WS663/541	7:00AM	2:00PM	CNX/1
WINNIPEG	WS663/671/503	7:00AM	5:55PM	2CNX/1	1 2 3 4 5 6•
	WS584/671/255	8:00AM	3:50PM	2CNX	1 2 3 4 5 ••
	B WS817/671/255	9:30AM	3:50PM	2CNX	1 2 3 4 5 ••
	B WS817/699/717	9:30AM	5:35PM	2CNX/1	••~•••••7
	WS619/699/503	10:35AM	5:55PM	2CNX/1	••~••••6•
	WS779/651	1:45PM	8:00PM	CNX	••~•••••7
	WS521/651	4:35PM	8:00PM	CNX	••~•••5••
	WS521/531	4:35PM	9:40PM	CNX	1 2 3 4 5 ••
	WS663/659	7:00AM	10:10AM	CNX	1 2 3 4 5 ••
	WS545/669	8:30AM	11:40AM	CNX	••~••••6•
WINNIPEG	WS773	2:00PM	3:40PM	N/S	1 2 3 4 5 ••
	WS132	2:00PM	4:39PM	1 STOP	••~••••6•
	WS723	5:00PM	8:10PM	1 STOP	••~•••••7
	WS691/764	6:30PM	9:30PM	CNX	••~•••••7

\*Monday/lundi=1, Tuesday/mardi=2, Wednesday/mercredi=3, Thursday/jeudi=4, Friday/vendredi=5, Saturday/samedi=6, Sunday/dimanche=7

# NEWS TRAVELS

## CUSTOM VIEWING

- Option to enlarge newspaper type
- Zoom-in on photos

## EXPANDED ACCESS

- Search tools
- Complete seven-day online archive



**NATIONAL POST**  
ELECTRONIC EDITION  
YOUR CANADA. YOUR POST.™  
YOUR WAY.

FULL POST ONLINE. FOR AN INTRODUCTORY OFFER VISIT:

[www.ee.nationalpost.com](http://www.ee.nationalpost.com)

part of the **canada.com** network



# Prince George to/à:

CITY	FLIGHT NO./NO DE VOL	DEPARTS/DEPART	ARRIVES/ARRIVEE	STOPS/ARRÊT	*DAYS/JOURS
CALGARY	WS210	7:20AM	11:20AM	1 STOP	1 2 3 4 5 ••
	WS592	9:35AM	2:20PM	2 STOPS	••••••7
	WS37	10:20AM	2:20PM	1 STOP	1 2 3 4 5 ••
	WS714/128	11:55AM	5:20PM	CNX	••••••6•
	WS32/42	5:15PM	9:45PM	CNX	1 2 3 •••••
	WS32/804	5:15PM	10:00PM	CNX	•••••5••
	WS32/505	5:15PM	10:50PM	CNX	1 2 3 4 ••••
EDMONTON	WS458/512	6:30PM	11:25PM	CNX	••••••7
	WS210/45	7:20AM	12:30PM	CNX	1 2 3 4 5 ••
	WS592/580	9:35AM	2:30PM	CNX	••••••7
	WS37/170	10:20AM	4:30PM	CNX	1 2 3 4 5 ••
FORT MCMURRAY	WS714/656	11:55AM	4:35PM	CNX	••••••6•
	WS32/18	5:15PM	10:10PM	CNX	1 2 3 4 5 ••
	WS37/29	10:20AM	7:05PM	CNX/2	1 2 3 4 5 ••
GRANDE PRAIRIE	WS210/34	7:20AM	2:13PM	CNX/2	1 2 3 4 5 ••
	WS592/580/115	9:35AM	4:58PM	2CNX	••••••7
HALIFAX	D WS210/822	7:20AM	7:45PM	CNX/1	1 2 3 4 5 ••
	WS210/628	7:20AM	10:00PM	CNX/1	1 2 3 4 5 ••
	WS592/628	9:35AM	10:00PM	CNX/1	••••••7
HAMILTON	WS210/554	7:20AM	6:40PM	CNX/1	1 2 3 4 5 ••
	KELOWNA	WS210/12	7:20AM	9:55AM	CNX
WS592		9:35AM	12:00PM	1 STOP	••••••7
WS37/503		10:20AM	4:35PM	CNX/1	1 2 3 4 5 ••
LONDON	WS714	11:55AM	2:25PM	1 STOP	••••••6•
	WS592/561	9:35AM	9:15PM	CNX/2	••••••7
	WS37/561	10:20AM	8:15PM	CNX/1	1 • 3 • 5 ••
MONCTON	F WS210/828	7:20AM	8:25PM	CNX/1	1 • 3 • 5 ••
	WS210/668	7:20AM	9:45PM	CNX/2	1 2 3 4 5 ••
MONTRÉAL	WS210/628	7:20AM	7:00PM	CNX	1 2 3 4 5 ••
	WS592/628	9:35AM	7:00PM	CNX	••••••7
OTTAWA	WS210/661	7:20AM	8:35PM	CNX/2	1 2 3 4 5 ••
	WS592/682/661	9:35AM	8:35PM	2CNX	••••••7
	A WS37/801	10:20AM	8:35PM	CNX	1 2 3 4 5 ••
REGINA	WS210	7:20AM	12:58PM	2 STOPS	1 2 3 4 5 ••
	WS592/440	9:35AM	7:43PM	CNX/2	••••••7
	WS37/256	10:20AM	8:13PM	CNX/1	1 2 3 4 5 ••
	WS714/128/162	11:55AM	7:58PM	2CNX	••••••6•
SASKATOON	A WS210/824	7:20AM	1:20PM	CNX	1 2 3 4 5 ••
	WS210/454	7:20AM	2:08PM	CNX/1	1 2 3 4 5 ••
	WS592/85	9:35AM	8:03PM	CNX/2	••••••7
	WS37/112/178	10:20AM	8:38PM	2CNX/1	1 2 3 4 5 ••
ST. JOHN'S	F WS210/826	7:20AM	9:10PM	CNX/1	• 2 • 4 •••
TORONTO	WS210/682	7:20AM	7:00PM	CNX	1 2 3 4 5 ••
	WS592/682	9:35AM	7:00PM	CNX	••••••7
	B WS37/626	10:20AM	9:35PM	CNX	1 2 3 4 5 ••
	B WS714/626	11:55AM	9:35PM	CNX	••••••6•
	WS32/505/652	5:15PM	6:35AM+1	2CNX	1 • 3 4 •••
	WS32/804/652	5:15PM	6:35AM+1	2CNX	•••••5••
VANCOUVER	WS458/512/652	6:30PM	6:35AM+1	2CNX	••••••7
	WS210	7:20AM	8:25AM	N/S	1 2 3 4 5 ••
	WS592	9:35AM	10:40AM	N/S	••••••7
	WS37	10:20AM	11:25AM	N/S	1 2 3 4 5 ••
	WS714	11:55AM	1:00PM	N/S	••••••6•
	WS32	5:15PM	6:20PM	N/S	1 2 3 4 5 ••
WINDSOR	WS458	6:30PM	7:35PM	N/S	••••••7
	WS60	8:30PM	9:35PM	N/S	•••••5••
	WS37/706	10:20AM	8:10PM	CNX/1	• 2 • 4 •••
WINNIPEG	WS210/404	7:20AM	4:05PM	CNX/1	1 2 3 4 5 ••
	WS592/757	9:35AM	4:05PM	CNX	••••••7

\*Monday/lundi=1, Tuesday/mardi=2, Wednesday/mercredi=3, Thursday/jeudi=4, Friday/vendredi=5, Saturday/samedi=6, Sunday/dimanche=7

# Regina to/à:

CITY	FLIGHT NO./NO DE VOL	DEPARTS/DEPART	ARRIVES/ARRIVEE	STOPS/ARRÊT	*DAYS/JOURS	
ABBOTSFORD	WS39/409	6:10AM	9:00AM	CNX	1 2 3 4 5 ••	
	WS78/63	7:20AM	10:40AM	CNX	••••••7	
	WS127/84	11:30AM	4:05PM	CNX	••••••6•	
	WS211/96	1:30PM	4:20PM	CNX	1 2 3 4 5 ••	
	WS411/593	2:10PM	5:35PM	CNX	••••••7	
	WS31/149	2:35PM	7:00PM	CNX/1	••••••6•	
	WS131/144	7:10PM	10:20PM	CNX	1 2 3 4 5 ••	
	WS49	8:10PM	10:30PM	1 STOP	••••••7	
	CALGARY	WS39	6:10AM	7:30AM	N/S	1 2 3 4 5 ••
		WS57	6:35AM	7:55AM	N/S	••••••6•
WS78		7:20AM	8:40AM	N/S	••••••7	
WS127		11:30AM	12:50PM	N/S	••••••6•	
WS211		1:30PM	2:50PM	N/S	1 2 3 4 5 ••	
WS411		2:10PM	3:30PM	N/S	••~••••7	
WS31/241		2:35PM	5:53PM	CNX	1 2 3 4 5 ••	
WS31/149		2:35PM	6:13PM	CNX	••~••••6•	
WS301		7:05PM	8:25PM	N/S	••~••••7	
WS131		7:10PM	8:30PM	N/S	1 2 3 4 5 ••	
COMOX	WS49	8:10PM	9:30PM	N/S	••~••••7	
	WS39/151	6:10AM	9:40AM	CNX	1 2 3 4 5 ••	
	WS57/145	6:35AM	10:30AM	CNX	••~••••6•	
	WS78/289	7:20AM	10:45AM	CNX	••~••••7	
	WS127/384	11:30AM	4:55PM	CNX	••~••••6•	
	WS211/271	1:30PM	6:50PM	CNX	••~••••5••	
	EDMONTON	WS39	6:10AM	8:45AM	1 STOP	1 2 3 4 5 ••
		WS127/148	11:30AM	2:30PM	CNX	••~••••6•
		WS35	2:10PM	3:25PM	N/S	••~••••7
		WS31	2:35PM	3:50PM	N/S	1 2 3 4 5 6 •
WS301/103		7:05PM	9:35PM	CNX	••~••••7	
FORT MCMURRAY	WS131/482	7:10PM	10:55PM	CNX	1 2 3 4 5 ••	
	WS35/146	2:10PM	8:05PM	CNX	••~••••7	
	WS31/29	2:35PM	7:05PM	CNX	1 2 3 4 5 ••	
	WS301/103	7:05PM	10:50PM	CNX/1	••~••••7	
	WS746/720/798	6:20AM	9:40PM	2CNX/1	1 • 3 • 5 ••	
GRANDE PRAIRIE	WS39/34	6:10AM	2:13PM	CNX/1	1 2 3 4 5 ••	
	WS127/148	11:30AM	3:48PM	CNX/1	••~••••6•	
	WS35/115	2:10PM	4:58PM	CNX	••~••••7	
HALIFAX	WS746/616	6:20AM	3:58PM	CNX/1	1 2 3 4 5 ••	
	WS57/798	6:35AM	7:20PM	CNX/1	••~••••6•	
	WS78/650	7:20AM	7:20PM	CNX/1	••~••••7	
HAMILTON	WS746	6:20AM	12:15PM	1 STOP	1 2 3 4 5 ••	
	WS57/435	6:35AM	4:30PM	CNX/1	••~••••6•	
	WS78/554	7:20AM	6:40PM	CNX	••~••••7	
KELOWNA	WS57	6:35AM	8:30AM	1 STOP	••~••••6•	
	WS78	7:20AM	9:10AM	1 STOP	••~••••7	
	WS411/717	2:10PM	4:15PM	CNX	••~••••7	
	WS31	2:35PM	4:25PM	1 STOP	1 2 3 4 5 6 •	
LONDON	WS301	7:05PM	9:00PM	1 STOP	••~••••7	
	WS746/94	6:20AM	1:23PM	CNX	1 2 3 4 5 ••	
	MONCTON	WS746/568	6:20AM	3:55PM	CNX/1	1 2 3 4 5 ••
		WS57/668	6:35AM	9:45PM	CNX/1	••~••••6•
MONTRÉAL	WS78/668	7:20AM	9:45PM	CNX/1	••~••••7	
	WS746/696	6:20AM	1:25PM	CNX	1 2 3 4 5 ••	
OTTAWA	WS78/668	7:20AM	6:57PM	CNX	••~••••7	
	WS746/772	6:20AM	1:24PM	CNX	1 2 3 4 5 ••	
	WS109	6:30AM	1:25PM	2 STOPS	••~••••6•	
	WS78/540	7:20AM	4:05PM	CNX	••~••••7	
PRINCE GEORGE	WS39/701	6:10AM	9:55AM	CNX/1	1 2 3 4 5 ••	
	WS57	6:35AM	11:30AM	3 STOPS	••~••••6•	
	WS411	2:10PM	6:05PM	2 STOPS	••~••••7	
	WS31/376	2:35PM	8:00PM	CNX/2	1 2 3 4 5 ••	
ST. JOHN'S	WS746/720/798	6:20AM	9:45PM	2CNX/1	• 2 • 4 •••	
	WS57/798	6:35AM	9:45PM	CNX/2	••~••••6•	
	WS78/650	7:20AM	9:45PM	CNX/2	••~••••7	

Continued on next page • Page suivante

\*Monday/lundi=1, Tuesday/mardi=2, Wednesday/mercredi=3, Thursday/jeudi=4, Friday/vendredi=5, Saturday/samedi=6, Sunday/dimanche=7



WINDSOR  
ONTARIO  
CANADA



The key to a successful conference

ONTARIO  
More to discover

# How to pitch Windsor as your next destination:



## What to say about Windsor around the Board Room table

- centrality of international location implies optimum logistics
- economics reflect wisdom of management's fiscal restraint
- excellent proximity between accommodations and venues
- state-of-the-art facilities optimize interaction/productivity
- opportunities for morale-building, extra-curricular activities
- excellent overall congruence with the selection criteria!



## What to tell your co-workers who will be attending

- the nightlife rocks and the Casino runs 24-7
- fabulous shopping, and a variety of charming ethnic areas
- there's tons of good stuff to keep spouses busy/entertained
- hotels are such a deal, I booked us all in suites!
- great eateries – swanky upscale and relaxed places, too
- the locals practically planned the whole thing for me!

It's a win-win proposition – a destination that the selection committee (and those cost-conscious accountants!) can be happy approving, and one that will earn you the appreciation of the gang around the water cooler, too.

Best of all, we're here to help you plan every detail, so the whole thing will go off smoothly. Start it off on the right foot.

Call us toll free today at 1-800-265-3633.

Or visit us online anytime at [www.visitwindsor.com](http://www.visitwindsor.com).

For more information and your free Meeting Planner Guide, please call

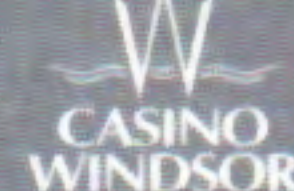
**1-800-265-3633**

WINDSOR  
ESSEX COUNTY  
& PEELEE ISLAND  
CONVENTION &  
VISITORS BUREAU

[www.visitwindsor.com](http://www.visitwindsor.com)

e-mail: [cvb@city.windsor.on.ca](mailto:cvb@city.windsor.on.ca)

AIRPORT  
**WINDSOR**



ACCESSIBILITY • TRADE SHOW FACILITIES • ACCOMMODATIONS • ATTRACTIONS • GAMING & LEISURE

## Regina to/à: continued/suite

	FLIGHT NO./ NO DE VOL	DÉPARTS/ DÉPART	ARRIVÉS/ ARRIVÉE	STOPS/ ARRÊT	*DAYS/ JOURS	
THUNDER BAY	WS39/732	6:10AM	2:53PM	CNX/1	1 2 3 4 5 ••	
	WS109	6:30AM	11:13AM	1 STOP	•••••6•	
	WS78/679	7:20AM	2:30PM	CNX	•••••7	
TORONTO	WS746/720	6:20AM	12:15PM	CNX	1 2 3 4 5 ••	
	WS57/798	6:35AM	3:45PM	CNX	•••••6•	
	WS78/650	7:20AM	3:50PM	CNX	•••••7	
	WS127/674	11:30AM	8:15PM	CNX	•••••6•	
	WS211/664	1:30PM	10:15PM	CNX	1 2 3 4 5 ••	
	WS411/664	2:10PM	10:15PM	CNX	•••••7	
	WS31/198	2:35PM	11:20PM	CNX/1	1 2 3 4 5 ••	
	WS31/656	2:35PM	10:45PM	CNX	•••••6•	
	WS131/652	7:10PM	6:35AM+1	CNX	1 • 3 4 5 ••	
	WS49/652	8:10PM	6:35AM+1	CNX	•••••7	
VANCOUVER	WS39/701	6:10AM	8:25AM	CNX	1 2 3 4 5 ••	
	WS57	6:35AM	9:50AM	2 STOPS	•••••6•	
	WS78	7:20AM	10:25AM	2 STOPS	•••••7	
	WS127	11:30AM	2:20PM	1 STOP	•••••6•	
	WS211	1:30PM	3:50PM	1 STOP	1 2 3 4 5 ••	
	WS411	2:10PM	4:25PM	1 STOP	•••••7	
	WS31	2:35PM	5:45PM	2 STOPS	1 2 3 4 5 6 •	
	WS131/613	7:10PM	9:30PM	CNX	•••••5••	
	VICTORIA	WS39/89	6:10AM	10:45AM	CNX	1 2 3 4 5 ••
	WS57/53	6:35AM	9:00AM	CNX	•••••6•	
WS78/89	7:20AM	10:45AM	CNX	•••••7		
WS211/255	1:30PM	3:50PM	CNX	1 2 3 4 5 ••		
WS35	2:10PM	4:34PM	1 STOP	•••••7		
WS31/192	2:35PM	5:34PM	CNX	1 2 3 4 5 ••		
WS131/531	7:10PM	9:40PM	CNX	1 2 3 4 5 ••		
WINDSOR	WS127/706	11:30AM	9:00PM	CNX	•••••6•	
WINNIPEG	WS746	6:20AM	8:25AM	N/S	1 2 3 4 5 ••	
	WS109	6:30AM	8:32AM	N/S	•••••6•	

## Saskatoon to/à:

	FLIGHT NO./ NO DE VOL	DÉPARTS/ DÉPART	ARRIVÉS/ ARRIVÉE	STOPS/ ARRÊT	*DAYS/ JOURS
ABBOTSFORD	WS701/409	6:30AM	9:00AM	CNX	1 2 3 4 5 ••
	WS106/439	10:50AM	3:20PM	CNX	1 2 3 4 5 ••
	WS717/593	2:35PM	5:35PM	CNX	•••••7
	WS503/149	2:45PM	7:00PM	CNX	•••••6•
	WS503/467	2:45PM	7:00PM	CNX	1 2 3 4 5 ••
	WS107/144	5:10PM	10:20PM	CNX/1	1 2 3 4 5 ••
	WS723/144	7:30PM	10:20PM	CNX	•••••5••
	WS97/49	8:30PM	10:30PM	CNX	•••••7
CALGARY	WS701	6:30AM	7:35AM	N/S	1 2 3 4 5 6 •
	WS106	10:50AM	11:55AM	N/S	1 2 3 4 5 ••
	WS717	2:35PM	3:40PM	N/S	•••••7
	WS503	2:45PM	3:50PM	N/S	1 2 3 4 5 6 •
	WS107/144	5:10PM	9:33PM	CNX	1 2 3 4 5 ••
	WS723	7:30PM	8:38PM	N/S	•••••5••
	WS97	8:30PM	9:35PM	N/S	•••••7
COMOX	WS701/151	6:30AM	9:40AM	CNX	1 2 3 4 5 ••
	WS701/145	6:30AM	10:30AM	CNX	•••••6•
	WS503/384	2:45PM	4:55PM	CNX	•••••6•
	WS503/271	2:45PM	6:50PM	CNX	•••••5••
EDMONTON	WS701/39	6:30AM	8:45AM	CNX	1 2 3 4 5 ••
	WS52	2:45PM	3:45PM	N/S	•••••6•
	WS68	3:30PM	4:30PM	N/S	•••••7
	WS107	5:10PM	6:10PM	N/S	1 2 3 4 5 ••
	WS723/482	7:30PM	10:55PM	CNX	•••••5••
FORT MCMURRAY	WS503/29	2:45PM	7:05PM	CNX/1	1 2 3 4 5 ••
	WS68/146	3:30PM	8:05PM	CNX	•••••7
GANDER	WS701/650/798	6:30AM	9:40PM	2CNX/1	1 • 3 • 5 ••
GRANDE PRAIRIE	WS701/34	6:30AM	2:13PM	CNX/1	1 2 3 4 5 ••
HALIFAX	WS720/746/616	6:15AM	3:58PM	2CNX	1 2 3 4 5 ••
	WS701/798	6:30AM	7:20PM	CNX/1	•••••6•
	WS723/652/546	7:30PM	2:15PM+1	2CNX/1	•••••5••
	WS97/652/546	8:30PM	2:05PM+1	2CNX/1	•••••7

Continued on next page • Page suivante

\*Monday/lundi=1, Tuesday/mardi=2, Wednesday/mercredi=3, Thursday/jeudi=4, Friday/vendredi=5, Saturday/samedi=6, Sunday/dimanche=7



# Saskatoon to/à: *continued/suite*

	FLIGHT NO./ NO DE VOL	DÉPARTS/ DEPART	ARRIVÉES/ ARRIVEE	STOPS/ ARRÊT	*DAYS/ JOURS
HAMILTON	WS720/746	6:15AM	12:15PM	CNX	1 2 3 4 5 ••
	WS701/435	6:30AM	4:30PM	CNX/1	••••• 6 •
	WS106/554	10:50AM	6:40PM	CNX	1 2 3 4 5 ••
KELOWNA	WS701/57	6:30AM	8:30AM	CNX	••••• 6 •
	WS701/12	6:30AM	9:55AM	CNX/1	1 2 3 4 5 ••
	WS106	10:50AM	12:35PM	1 STOP	1 2 3 4 5 ••
	WS717	2:35PM	4:15PM	1 STOP	••••• 7
	WS503	2:45PM	4:35PM	1 STOP	1 2 3 4 5 6 •
LONDON	WS68	3:30PM	5:05PM	1 STOP	••••• 7
	WS720/94	6:15AM	1:23PM	CNX	1 2 3 4 5 ••
MONCTON	WS106/561	10:50AM	8:15PM	CNX	1 • 3 • 5 ••
	WS720/746/568	6:15AM	3:55PM	2CNX	1 2 3 4 5 ••
MONTREAL	WS106/828	10:50AM	8:25PM	CNX	1 • 3 • 5 ••
	WS106/668	10:50AM	9:45PM	CNX/1	1 2 3 4 5 ••
OTTAWA	WS720/696	6:15AM	1:25PM	CNX	1 2 3 4 5 ••
	WS701/798/654	6:30AM	5:45PM	2CNX	••••• 6 •
	WS106/668	10:50AM	6:57PM	CNX	1 2 3 4 5 ••
	WS51/448/559	11:20AM	8:40PM	2CNX	••••• 6 •
	WS67/634/682	11:55AM	8:45PM	2CNX	••••• 7
	WS723/652/660	7:30PM	9:10AM+1	2CNX	••••• 5 ••
	WS97/652/660	8:30PM	9:10AM+1	2CNX	••••• 7
	WS720/772	6:15AM	1:24PM	CNX	1 2 3 4 5 ••
	WS701/540	6:30AM	4:05PM	CNX	1 2 3 4 5 6 •
	WS51/448	11:20AM	8:35PM	CNX/1	••••• 6 •
PRINCE GEORGE	WS41/722/661	11:30AM	8:35PM	2CNX	1 2 3 4 5 ••
	WS67/634/661	11:55AM	8:35PM	2CNX	••••• 7
	WS723/652/693	7:30PM	8:00AM+1	2CNX	••••• 5 ••
	WS97/652/583	8:30PM	8:05AM+1	2CNX	••••• 7
	WS701	6:30AM	9:55AM	2 STOPS	1 2 3 4 5 ••
	WS701/57	6:30AM	11:30AM	CNX/2	••••• 6 •
ST. JOHN'S	WS408/411	12:45PM	6:05PM	CNX	••••• 7
	WS825/143	2:00PM	4:50PM	CNX	1 2 3 4 5 ••
	WS68/17/319	3:30PM	9:10PM	2CNX	••••• 7
THUNDER BAY	WS701/650/798	6:30AM	9:45PM	2CNX/1	• 2 • 4 ••••
	WS701/798	6:30AM	9:45PM	CNX/2	••••• 6 •
TORONTO	WS106/826	10:50AM	9:10PM	CNX	• 2 • 4 ••••
	WS701/435	6:30AM	2:30PM	CNX	••••• 6 •
	WS701/732	6:30AM	2:53PM	CNX/1	1 2 3 4 5 ••
VANCOUVER	WS67/414	11:55AM	5:03PM	CNX	••••• 7
	WS720	6:15AM	12:15PM	1 STOP	1 2 3 4 5 ••
	WS701/798	6:30AM	3:45PM	CNX	••••• 6 •
	WS51/448	11:20AM	6:55PM	CNX	••••• 6 •
	WS41/722	11:30AM	6:00PM	CNX	1 2 3 4 5 ••
	WS67/634	11:55AM	6:00PM	CNX	••••• 7
	WS717/664	2:35PM	10:15PM	CNX	••••• 7
	WS503/664	2:45PM	10:15PM	CNX	1 2 3 4 5 ••
	WS52/656	2:45PM	10:45PM	CNX	••••• 6 •
	WS68/656	3:30PM	11:50PM	CNX	••••• 7
	WS723/652	7:30PM	6:35AM+1	CNX	••••• 5 ••
	WS97/652	8:30PM	6:35AM+1	CNX	••••• 7
	WS701	6:30AM	8:25AM	1 STOP	1 2 3 4 5 6 •
	WS106/167	10:50AM	1:25PM	CNX	1 2 3 4 5 ••
	WS408	12:45PM	2:10PM	N/S	••••• 7
	WS825	2:00PM	3:10PM	N/S	1 2 3 4 5 ••
	VICTORIA	WS52	2:45PM	4:53PM	1 STOP
WS68		3:30PM	6:30PM	2 STOPS	••••• 7
WS107		5:10PM	7:13PM	1 STOP	1 2 3 4 5 ••
WS723/613		7:30PM	9:30PM	CNX	••••• 5 ••
WS701/53		6:30AM	9:00AM	CNX	••••• 6 •
WS701/89		6:30AM	10:45AM	CNX	1 2 3 4 5 ••
WS717		2:35PM	5:35PM	2 STOPS	••••• 7
WINDSOR	WS503	2:45PM	5:55PM	2 STOPS	1 2 3 4 5 6 •
	WS723/531	7:30PM	9:40PM	CNX	••••• 5 ••
	WS106/706	10:50AM	8:10PM	CNX	• 2 • 4 ••••
WINNIPEG	WS720	6:15AM	8:30AM	N/S	1 2 3 4 5 ••
	WS51	11:20AM	1:35PM	N/S	••••• 6 •
	WS41	11:30AM	1:45PM	N/S	1 2 3 4 5 ••
	WS67	11:55AM	2:10PM	N/S	••••• 7
	WS717/510	2:35PM	7:35PM	CNX	••••• 7
	WS503/774	2:45PM	7:25PM	CNX	••••• 6 •
	WS503/110	2:45PM	9:05PM	CNX	1 2 3 4 5 ••

# St. John's to/à:

	FLIGHT NO./ NO DE VOL	DÉPARTS/ DEPART	ARRIVÉES/ ARRIVEE	STOPS/ ARRÊT	*DAYS/ JOURS
ABBOTSFORD	WS827/83	8:40AM	12:10PM	CNX	1 • 3 • 5 ••
	WS699/96	9:10AM	4:20PM	CNX/2	1 • 3 • 5 ••
	WS699/593	9:10AM	5:35PM	CNX/2	••••• 7
CALGARY	WS827	8:40AM	11:20AM	N/S	1 • 3 • 5 • 7
	WS699	9:10AM	3:15PM	2 STOPS	1 • 3 • 5 • 7
COMOX	WS827/150	8:40AM	2:45PM	CNX	••••• 7
	WS699/271	9:10AM	6:50PM	CNX/2	••••• 5 ••
EDMONTON	WS827/34	8:40AM	12:55PM	CNX	1 • 3 • 5 ••
	WS699/240	9:10AM	4:45PM	CNX/2	1 • 3 • 5 ••
	WS699/146	9:10AM	6:50PM	CNX/2	••••• 7
FORT MCMURRAY	WS699/29	9:10AM	7:05PM	CNX/3	1 • 3 • 5 ••
	WS699/146	9:10AM	8:05PM	CNX/3	••••• 7
GRANDE PRAIRIE	WS827/34	8:40AM	2:13PM	CNX/1	1 • 3 • 5 ••
HALIFAX	WS699	9:10AM	10:25AM	N/S	1 • 3 • 5 • 7
HAMILTON	WS699/613	9:10AM	5:47PM	CNX	1 • 3 • 5 ••
KELOWNA	WS827/106	8:40AM	12:35PM	CNX	1 • 3 • 5 ••
	WS699/717	9:10AM	4:15PM	CNX/2	••••• 7
	WS699/503	9:10AM	4:35PM	CNX/2	1 • 3 • 5 ••
MONTRÉAL	WS699/698	9:10AM	2:30PM	CNX/1	1 • 3 • 5 • 7
OTTAWA	WS699/615	9:10AM	2:00PM	CNX/1	1 • 3 • 5 ••
	WS699/609	9:10AM	3:35PM	CNX/1	••••• 7
PRINCE GEORGE	WS827/663/143	8:40AM	4:50PM	2CNX	1 • 3 • 5 ••
	WS699/411/376	9:10AM	8:00PM	2CNX/2	1 • 3 • 5 ••
	WS699/23/319	9:10AM	9:10PM	2CNX/2	••••• 7
REGINA	WS827/210	8:40AM	12:58PM	CNX	1 • 3 • 5 ••
	WS827/20	8:40AM	1:38PM	CNX	••••• 7
	WS699/440	9:10AM	7:43PM	CNX/2	••••• 7
SASKATOON	WS699/256	9:10AM	8:13PM	CNX/2	1 • 3 • 5 ••
	WS827/716	8:40AM	1:58PM	CNX	••••• 7
	WS827/454	8:40AM	2:08PM	CNX	1 • 3 • 5 ••
THUNDER BAY	WS699/721/107	9:10AM	4:40PM	2CNX/1	1 • 3 • 5 ••
	WS699/85	9:10AM	8:03PM	CNX/2	••••• 7
	WS699/569	9:10AM	7:30PM	CNX/1	1 • 3 • 5 ••
TORONTO	WS699	9:10AM	12:10PM	1 STOP	1 • 3 • 5 • 7
VANCOUVER	WS827/663	8:40AM	12:25PM	CNX	1 • 3 • 5 ••
	WS827/415	8:40AM	2:25PM	CNX	••••• 7
	WS699/411	9:10AM	5:10PM	CNX/2	1 • 3 • 5 ••
VICTORIA	WS699/23	9:10AM	5:45PM	CNX/2	••••• 7
	WS827/541	8:40AM	2:00PM	CNX	••••• 7
	WS699/717	9:10AM	5:35PM	CNX/3	••••• 7
WINNIPEG	WS699/503	9:10AM	5:55PM	CNX/3	1 • 3 • 5 ••
	WS699/721	9:10AM	2:15PM	CNX/1	1 • 3 • 5 ••
	WS699/723	9:10AM	8:10PM	CNX/1	••••• 7

# Thunder Bay to/à:

	FLIGHT NO./ NO DE VOL	DÉPARTS/ DEPART	ARRIVÉES/ ARRIVEE	STOPS/ ARRÊT	*DAYS/ JOURS
ABBOTSFORD	WS493/101	9:15AM	3:25PM	CNX/1	••••• 7
	WS602/439	12:25PM	3:20PM	CNX/1	1 2 3 4 5 ••
	WS84	1:50PM	4:05PM	1 STOP	••••• 6 •
	WS484/593	3:00PM	5:35PM	CNX	••••• 7
CALGARY	WS493	9:15AM	11:05AM	1 STOP	••••• 7
	WS602	12:25PM	2:15PM	1 STOP	1 2 3 4 5 ••
	WS84	1:50PM	2:40PM	N/S	••••• 6 •
	WS484	3:00PM	3:50PM	N/S	••••• 7
COMOX	WS132/341	4:30PM	7:39PM	CNX	••••• 6 •
	WS493/150	9:15AM	2:45PM	CNX/1	••••• 7
	WS602/271	12:25PM	6:50PM	CNX/1	••••• 5 ••
EDMONTON	WS84/384	1:50PM	4:55PM	CNX	••••• 6 •
	WS602/240	12:25PM	4:45PM	CNX/1	1 2 3 4 5 ••
	WS484/146	3:00PM	6:50PM	CNX	••••• 7
	WS132	4:30PM	6:14PM	1 STOP	••••• 6 •

Continued on next page • Page suivante

\*Monday/lundi=1, Tuesday/mardi=2, Wednesday/mercredi=3, Thursday/jeudi=4, Friday/vendredi=5, Saturday/samedi=6, Sunday/dimanche=7

\*Monday/lundi=1, Tuesday/mardi=2, Wednesday/mercredi=3, Thursday/jeudi=4, Friday/vendredi=5, Saturday/samedi=6, Sunday/dimanche=7



# Thunder Bay to/à: *continued/suite*

	FLIGHT NO./ NO DE VOL	DEPARTS/ DEPART	ARRIVES/ ARRIVEE	STOPS/ ARRÊT	*DAYS/ JOURS
FORT MCMURRAY	WS602/29	12:25PM	7:05PM	CNX/2	1 2 3 4 5 ••
	WS484/146	3:00PM	8:05PM	CNX/1	••••••7
GANDER	WS834/616/798	8:00AM	9:40PM	2CNX	1 • 3 • 5 ••
GRANDE PRAIRIE	WS493/115	9:15AM	4:58PM	CNX/2	••••••7
HALIFAX	WS676/546	7:00AM	2:15PM	CNX/1	••••••6•
	WS608/546	7:15AM	2:05PM	CNX/1	1 2 3 4 5 ••
	WS834/616	8:00AM	3:58PM	CNX	1 2 3 4 5 ••
HAMILTON	WS834	8:00AM	9:35AM	N/S	1 2 3 4 5 ••
	WS435	3:00PM	4:30PM	N/S	••••••6•
KELOWNA	WS602/503	12:25PM	4:35PM	CNX/1	1 2 3 4 5 ••
	WS84/503	1:50PM	4:35PM	CNX	••••••6•
	WS484/717	3:00PM	4:15PM	CNX	••••••7
MONCTON	WS834/568	8:00AM	3:55PM	CNX	1 2 3 4 5 ••
MONTREAL	WS608	7:15AM	10:40AM	1 STOP	1 2 3 4 5 ••
	E WS732/842	3:25PM	6:55PM	CNX	1 2 3 4 5 ••
	WS732/766	3:25PM	8:40PM	CNX	1 2 3 4 5 ••
	WS414/682	5:35PM	8:45PM	CNX	••••••7
OTTAWA	WS676	7:00AM	10:05AM	1 STOP	••••••6•
	WS608/546	7:15AM	10:50AM	CNX	1 2 3 4 5 ••
	WS780	8:00AM	11:10AM	1 STOP	••••••7
	WS109	11:45AM	1:25PM	N/S	••••••6•
	WS732	3:25PM	6:35PM	1 STOP	1 2 3 4 5 ••
PRINCE GEORGE	WS414/661	5:35PM	8:35PM	CNX	••••••7
	WS493/415/411	9:15AM	6:05PM	2CNX/1	••••••7
	WS602/411/376	12:25PM	8:00PM	2CNX/1	1 2 3 4 5 ••
REGINA	WS484/23/319	3:00PM	9:10PM	2CNX	••••••7
	WS493/20	9:15AM	1:38PM	CNX/1	••••••7
	WS602/256	12:25PM	8:13PM	CNX/1	1 2 3 4 5 ••
	WS84/162	1:50PM	7:58PM	CNX	••••••6•
SASKATOON	WS484/440	3:00PM	7:43PM	CNX	••••••7
	WS493/716	9:15AM	1:58PM	CNX/1	••••••7
	WS602/107	12:25PM	4:40PM	CNX	1 2 3 4 5 ••
ST. JOHN'S	WS484/85	3:00PM	8:03PM	CNX	••••••7
	WS834/616/798	8:00AM	9:45PM	2CNX	• 2 • 4 •••
TORONTO	WS676	7:00AM	8:35AM	N/S	••••••6•
	WS608	7:15AM	8:50AM	N/S	1 2 3 4 5 ••
	WS780	8:00AM	9:35AM	N/S	••••••7
	WS732	3:25PM	5:00PM	N/S	1 2 3 4 5 ••
	WS414	5:35PM	7:10PM	N/S	••~••••7
VANCOUVER	WS544/595	8:45AM	10:35AM	CNX	••~••••6•
	WS493/756	9:15AM	11:00AM	CNX	••~••••7
	WS602/211	12:25PM	3:50PM	CNX/1	1 2 3 4 5 ••
	WS84/598	1:50PM	4:15PM	CNX	••~••••6•
	WS484/23	3:00PM	5:45PM	CNX	••~••••7
VICTORIA	WS132/341	4:30PM	8:30PM	CNX/1	••~••••6•
	WS493/541	9:15AM	2:00PM	CNX/1	••~••••7
	WS602/255	12:25PM	3:50PM	CNX/1	1 2 3 4 5 ••
	WS84/503	1:50PM	5:55PM	CNX/1	••~••••6•
WINNIPEG	WS484/717	3:00PM	5:35PM	CNX/1	••~••••7
	WS544	8:45AM	8:55AM	N/S	••~••••6•
	WS493	9:15AM	9:25AM	N/S	••~••••7
	WS602	12:25PM	12:35PM	N/S	1 2 3 4 5 ••
WS132	4:30PM	4:39PM	N/S	••~••••6•	

\*Monday/lundi=1, Tuesday/mardi=2, Wednesday/mercredi=3, Thursday/jeudi=4, Friday/vendredi=5, Saturday/samedi=6, Sunday/dimanche=7

# Toronto to/à:

	FLIGHT NO./ NO DE VOL	DEPARTS/ DEPART	ARRIVES/ ARRIVEE	STOPS/ ARRÊT	*DAYS/ JOURS	
ABBOTSFORD	WS653/63	7:10AM	10:40AM	CNX	•••••••7	
	WS653/83	7:10AM	12:10PM	CNX	1 2 • 4 5 ••	
	WS663/83	9:00AM	12:10PM	CNX	1 2 3 4 5 ••	
	WS663/83	9:00AM	12:15PM	CNX	••~••••6•	
	WS671/439	11:30AM	3:20PM	CNX	1 2 3 4 5 ••	
	WS671/101	11:30AM	3:25PM	CNX	••~••••7	
	WS671/84	11:30AM	4:05PM	CNX	••~••••6•	
	WS699/84	1:00PM	4:05PM	CNX	••~••••6•	
	WS699/96	1:00PM	4:20PM	CNX	1 2 3 4 5 ••	
	WS699/593	1:00PM	5:35PM	CNX	••~••••7	
	WS651/144	4:45PM	10:20PM	CNX	1 2 3 4 5 ••	
	WS635/49	6:40PM	10:30PM	CNX	••~••••7	
	CALGARY	WS653	7:10AM	9:25AM	N/S	1 2 • 4 5 6 7
		WS663	9:00AM	11:15AM	N/S	1 2 3 4 5 6 7
WS671		11:30AM	1:45PM	N/S	1 2 3 4 5 6 7	
WS699		1:00PM	3:15PM	N/S	1 2 3 4 5 6 7	
WS651		4:45PM	7:00PM	N/S	1 2 3 4 5 6 7	
WS635		6:40PM	8:55PM	N/S	••~••••7	
COMOX	WS662	8:00PM	10:15PM	N/S	1 2 3 4 5 ••	
	WS653/145	7:10AM	10:30AM	CNX	••~••••6•	
	WS653/289	7:10AM	10:45AM	CNX	••~••••7	
	WS671/150	11:30AM	2:45PM	CNX	••~••••7	
	WS699/384	1:00PM	4:55PM	CNX	••~••••6•	
EDMONTON	WS699/271	1:00PM	6:50PM	CNX	••~••••5••	
	WS657	7:25AM	9:35AM	N/S	1 2 3 4 5 • 7	
	WS677	9:00AM	11:10AM	N/S	••~••••6•	
	WS663/34	9:00AM	12:55PM	CNX	1 2 3 4 5 ••	
	WS671/115	11:30AM	3:35PM	CNX	••~••••7	
	WS699/240	1:00PM	4:45PM	CNX	1 2 3 4 5 ••	
	WS687	4:45PM	6:55PM	N/S	••~••••6•	
	WS719	5:45PM	7:55PM	N/S	••~••••7	
	WS655	6:40PM	8:50PM	N/S	1 2 3 4 5 ••	
	FORT MCMURRAY	WS699/29	1:00PM	7:05PM	CNX/1	1 2 3 4 5 ••
WS699/146		1:00PM	8:05PM	CNX/1	••~••••7	
WS719/103		5:45PM	10:50PM	CNX	••~••••7	
GANDER	WS798	4:20PM	9:40PM	1 STOP	1 • 3 • 5 ••	
GRANDE PRAIRIE	WS663/34	9:00AM	2:13PM	CNX/1	1 2 3 4 5 ••	
	WS663/148	9:00AM	3:48PM	CNX/1	••~••••6•	
	WS671/115	11:30AM	4:58PM	CNX/1	••~••••7	
HALIFAX	WS546	9:50AM	2:05PM	1 STOP	1 2 3 4 5 ••	
	WS546	10:10AM	2:15PM	1 STOP	••~••••6•	
	WS650	4:20PM	7:20PM	N/S	••~••••7	
	WS798	4:20PM	7:20PM	N/S	1 2 3 4 5 6 •	
KELOWNA	E WS842/628	5:45PM	10:00PM	CNX	1 2 3 4 5 6 7	
	WS627/592	7:30AM	12:00PM	CNX	••~••••7	
	WS627/142	7:30AM	1:15PM	CNX	••~••••6•	
	WS663/106	9:00AM	12:35PM	CNX	1 2 3 4 5 ••	
	WS677/714	9:00AM	2:25PM	CNX/1	••~••••6•	
	B WS817/112	11:20AM	3:50PM	CNX	1 2 3 4 5 ••	
	WS699/717	1:00PM	4:15PM	CNX	••~••••7	
	WS699/503	1:00PM	4:35PM	CNX	1 2 3 4 5 6 •	
	WS651/139	4:45PM	7:30PM	CNX	1 2 3 4 5 ••	
	WS651/301	4:45PM	9:00PM	CNX	••~••••7	
MONCTON	WS654/668	4:35PM	9:45PM	CNX	1 2 3 4 5 6 7	
MONTREAL	E WS842/668	5:45PM	9:45PM	CNX	1 2 3 4 5 6 7	
	WS762	6:45AM	7:55AM	N/S	1 2 3 4 5 6 •	
	WS660	8:00AM	9:10AM	N/S	1 2 3 4 5 6 7	
	WS608	9:30AM	10:40AM	N/S	1 2 3 4 5 ••	
	WS698	1:20PM	2:30PM	N/S	1 2 3 4 5 6 7	
	WS654	4:35PM	5:45PM	N/S	1 2 3 4 5 6 7	
	E WS842	5:45PM	6:55PM	N/S	1 2 3 4 5 6 7	
	WS559	7:30PM	8:40PM	N/S	••~••••6•	
	WS766	7:30PM	8:40PM	N/S	1 2 3 4 5 ••	
	WS682	7:35PM	8:45PM	N/S	••~••••7	
	OTTAWA	WS693	7:00AM	8:00AM	N/S	••~••••6•
		WS583	7:05AM	8:05AM	N/S	1 2 3 4 5 ••
	B WS818	8:00AM	9:00AM	N/S	1 2 3 4 5 • 7	
	WS676	9:05AM	10:05AM	N/S	••~••••6•	
	WS646	9:15AM	10:15AM	N/S	••~••••7	

Continued on next page • Page suivante

\*Monday/lundi=1, Tuesday/mardi=2, Wednesday/mercredi=3, Thursday/jeudi=4, Friday/vendredi=5, Saturday/samedi=6, Sunday/dimanche=7



Canada's leading airline in  
on-time performance.

[westjet.com](http://westjet.com) | 1-888-WestJet

**WESTJET**



# Toronto to/à: *continued/suite*

	FLIGHT NO./ NO DE VOL	DEPARTS/ DEPART	ARRIVES/ ARRIVEE	STOPS/ ARRET	*DAYS/ JOURS	
OTTAWA CONT.	WS546	9:50AM	10:50AM	N/S	1 2 3 4 5 ••	
	WS546	10:10AM	11:10AM	N/S	•••••6•	
	WS780	10:10AM	11:10AM	N/S	•••••7	
	WS615	1:00PM	2:00PM	N/S	1 2 3 4 5 ••	
	WS609	2:35PM	3:35PM	N/S	•••••7	
	WS690	5:00PM	6:00PM	N/S	•••••7	
	WS732	5:35PM	6:35PM	N/S	1 2 3 4 5 ••	
	WS448	7:35PM	8:35PM	N/S	•••••6•	
	WS661	7:35PM	8:35PM	N/S	1 2 3 4 5 •7	
	PRINCE GEORGE	WS493/415/411	7:00AM	6:05PM	2CNX/2	•••••7
WS627/57		7:30AM	11:30AM	CNX	•••••6•	
WS663/102/143		9:00AM	4:50PM	2CNX	1 2 3 4 5 ••	
B WS817/143		11:20AM	4:50PM	CNX	1 2 3 4 5 ••	
WS699/411		1:00PM	6:05PM	CNX/1	•••••7	
WS699/411/376		1:00PM	8:00PM	2CNX	1 2 3 4 5 ••	
WS803/319		5:00PM	9:10PM	CNX	•••••7	
REGINA	WS653/126	7:10AM	11:03AM	CNX	•••••6•	
	WS663/210	9:00AM	12:58PM	CNX	1 2 3 4 5 ••	
	WS663/20	9:00AM	1:38PM	CNX	•••••7	
	WS699/440	1:00PM	7:43PM	CNX	•••••7	
	WS699/162	1:00PM	7:58PM	CNX	•••••6•	
	WS723/131	4:40PM	6:40PM	CNX	1 2 3 4 5 ••	
	WS651/116	4:45PM	9:03PM	CNX	•••••7	
	WS635/302	6:40PM	10:42PM	CNX	•••••7	
	SASKATOON	WS653/51	7:10AM	10:53AM	CNX	•••••6•
		WS653/67	7:10AM	11:28AM	CNX	•••••7
WS663/716		9:00AM	1:58PM	CNX	•••••7	
WS663/454		9:00AM	2:08PM	CNX	1 2 3 4 5 ••	
WS669/52		10:15AM	2:20PM	CNX	•••••6•	
WS721/107		12:50PM	4:40PM	CNX	1 2 3 4 5 ••	
WS723		4:40PM	7:00PM	1 STOP	1 2 3 4 5 ••	
WS723	6:45PM	9:05PM	1 STOP	•••••7		
ST. JOHN'S	WS650	4:20PM	9:45PM	1 STOP	•••••7	
	WS798	4:20PM	9:45PM	1 STOP	•2•4•6•	
THUNDER BAY	WS493	7:00AM	8:45AM	N/S	•••••7	
	WS602	10:10AM	11:55AM	N/S	1 2 3 4 5 ••	
	WS569	5:45PM	7:30PM	N/S	1 2 3 4 5 ••	
	WS695	5:45PM	7:30PM	N/S	•••••6•	
	WS759	8:10PM	9:55PM	N/S	•••••7	
VANCOUVER	WS627	7:30AM	9:40AM	N/S	1 2 3 4 5 6 7	
	WS677	9:00AM	12:14PM	1 STOP	•••••6•	
	WS663	9:00AM	12:25PM	1 STOP	1 2 3 4 5 ••	
	B WS817	11:20AM	1:30PM	N/S	1 2 3 4 5 6 7	
	WS699/598	1:00PM	4:15PM	CNX	•••••6•	
	WS699/411	1:00PM	5:10PM	CNX	1 2 3 4 5 ••	
	WS699/23	1:00PM	5:45PM	CNX	•••••7	
	WS803	5:00PM	7:10PM	N/S	1 2 3 4 5 6 7	
	WS719	5:45PM	8:59PM	1 STOP	•••••7	
	WS683	7:45PM	9:55PM	N/S	1 2 3 4 5 •7	
VICTORIA	WS653/89	7:10AM	10:45AM	CNX	1 2 •4 5 •7	
	WS653/43	7:10AM	12:00PM	CNX	•••••6•	
	WS659/255	8:45AM	3:50PM	CNX/1	1 2 3 4 5 ••	
	WS663/541	9:00AM	2:00PM	CNX	•••••7	
	WS677/213	9:00AM	3:34PM	CNX	•••••6•	
	WS671/255	11:30AM	3:50PM	CNX	1 2 3 4 5 ••	
	WS699/717	1:00PM	5:35PM	CNX/1	•••••7	
	WS699/503	1:00PM	5:55PM	CNX/1	1 2 3 4 5 6 •	
	C WS821	4:40PM	7:05PM	N/S	1 2 3 4 5 6 7	
	WS651	4:45PM	8:00PM	1 STOP	••••5•7	
WS651/531	4:45PM	9:40PM	CNX	1 2 3 4 5 ••		
WINNIPEG	WS493	7:00AM	9:25AM	1 STOP	•••••7	
	WS659	8:45AM	10:10AM	N/S	1 2 3 4 5 ••	
	WS602	10:10AM	12:35PM	1 STOP	1 2 3 4 5 ••	
	WS669	10:15AM	11:40AM	N/S	•••••6•	
	WS721	12:50PM	2:15PM	N/S	1 2 3 4 5 ••	
	WS723	4:40PM	6:05PM	N/S	1 2 3 4 5 ••	
	WS723	6:45PM	8:10PM	N/S	•••••7	
	WS764	8:05PM	9:30PM	N/S	•••••7	

\*Monday/lundi=1, Tuesday/mardi=2, Wednesday/mercredi=3, Thursday/jeudi=4, Friday/vendredi=5, Saturday/samedi=6, Sunday/dimanche=7

# Vancouver to/à:

	FLIGHT NO./ NO DE VOL	DEPARTS/ DEPART	ARRIVES/ ARRIVEE	STOPS/ ARRET	*DAYS/ JOURS	
CALGARY	WS72	7:00AM	9:20AM	N/S	1 2 3 4 5 ••	
	WS117	7:00AM	9:20AM	N/S	•••••7	
	WS126	7:00AM	9:20AM	N/S	•••••6•	
	WS280	8:00AM	10:20AM	N/S	1 2 3 4 5 ••	
	WS572	8:00AM	10:20AM	N/S	•••••6•	
	WS45	8:45AM	11:05AM	N/S	•••••6•	
	WS210	9:00AM	11:20AM	N/S	1 2 3 4 5 •7	
	WS285	9:05AM	11:25AM	N/S	•••••6•	
	WS716	9:10AM	12:25PM	1 STOP	•••••7	
	WS404	10:15AM	12:35PM	N/S	1 2 3 4 5 ••	
	WS596	11:15AM	1:35PM	N/S	•••••6•	
	WS603	11:30AM	1:50PM	N/S	•••••7	
	WS37	12:00PM	2:20PM	N/S	1 2 3 4 5 •7	
	WS142	12:25PM	3:35PM	1 STOP	•••••6•	
	WS286	1:00PM	3:20PM	N/S	1 2 3 4 5 ••	
	WS168	2:00PM	4:20PM	N/S	1 2 3 4 5 ••	
	WS394	2:35PM	4:55PM	N/S	•••••7	
	WS128	3:00PM	5:20PM	N/S	•••••6•	
	WS130	3:40PM	6:00PM	N/S	•••••7	
	WS66	4:00PM	7:15PM	1 STOP	•••••7	
	WS85	4:10PM	6:30PM	N/S	•••••7	
	WS212	4:25PM	6:45PM	N/S	1 2 3 4 5 ••	
	WS464	5:20PM	7:40PM	N/S	•••••6•	
	WS278	6:15PM	8:35PM	N/S	1 2 3 4 5 •7	
	WS42	7:25PM	9:45PM	N/S	1 2 3 ••••	
	WS804	7:40PM	10:00PM	N/S	••••5•7	
	WS505	8:30PM	10:50PM	N/S	1 2 3 4 •••	
	WS512	9:05PM	11:25PM	N/S	•••••7	
	EDMONTON	WS618	7:00AM	9:25AM	N/S	1 2 3 4 5 6 7
		WS578	8:00AM	10:25AM	N/S	•••••7
WS45		10:05AM	12:30PM	N/S	1 2 3 4 5 ••	
WS79		10:55AM	1:20PM	N/S	•••••7	
WS141		11:15AM	1:40PM	N/S	1 2 3 4 5 ••	
WS114		11:50AM	2:15PM	N/S	•••••6•	
WS580		12:05PM	2:30PM	N/S	•••••7	
WS170		2:05PM	4:30PM	N/S	1 2 3 4 5 ••	
WS656		2:10PM	4:35PM	N/S	•••••6•	
WS92		3:00PM	5:25PM	N/S	•••••7	
WS24	4:00PM	6:25PM	N/S	•••••7		
WS432	4:35PM	7:00PM	N/S	1 2 3 •5••		
WS422	5:40PM	8:55PM	1 STOP	1 2 3 4 5 ••		
WS174	6:10PM	8:35PM	N/S	•••••6•		
WS18	7:00PM	9:25PM	N/S	•••••7		
WS18	7:45PM	10:10PM	N/S	1 2 3 4 5 ••		
WS505	8:30PM	10:55PM	N/S	••••5••		
FORT McMURRAY	WS141/86	11:15AM	4:45PM	CNX	•••4•••	
	WS170/29	2:05PM	7:05PM	CNX	1 2 3 4 5 ••	
	WS24/146	4:00PM	8:05PM	CNX	•••••7	
	WS18/103	7:00PM	10:50PM	CNX	•••••7	
GANDER	WS802/798	8:00AM	9:40PM	CNX/1	1 •3•5••	
	GRANDE PRAIRIE	WS45/34	10:05AM	2:13PM	CNX	1 2 3 4 5 ••
WS114/148		11:50AM	3:48PM	CNX	•••••6•	
WS580/115		12:05PM	4:58PM	CNX	•••••7	
HALFAX	D WS210/822	9:00AM	7:45PM	CNX	1 2 3 4 5 •7	
	D WS285/822	9:05AM	7:45PM	CNX	•••••6•	
HAMILTON	WS628	11:15AM	10:00PM	1 STOP	1 2 3 4 5 6 7	
	WS618	7:00AM	3:50PM	1 STOP	1 2 3 4 5 •7	
	WS126/435	7:00AM	4:30PM	CNX/1	•••••6•	
KELOWNA	WS716/554	9:10AM	6:40PM	CNX/1	•••••7	
	WS404/554	10:15AM	6:40PM	CNX	1 2 3 4 5 ••	
	WS12	9:05AM	9:55AM	N/S	1 2 3 4 5 ••	
	WS716	9:10AM	10:00AM	N/S	•••••7	
	WS592	11:10AM	12:00PM	N/S	•••••7	
	WS142	12:25PM	1:15PM	N/S	•••••6•	
	WS714	1:35PM	2:25PM	N/S	•••••6•	

Continued on next page • Page suivante

\*Monday/lundi=1, Tuesday/mardi=2, Wednesday/mercredi=3, Thursday/jeudi=4, Friday/vendredi=5, Saturday/samedi=6, Sunday/dimanche=7



# Vancouver to/à: continued/suite

	FLIGHT NO./ NO DE VOL	DEPARTS/ DÉPART	ARRIVES/ ARRIVÉE	STOPS/ ARRÊT	*DAYS/ JOURS	
KELOWNA CONT.	WS112	3:00PM	3:50PM	N/S	1 2 3 4 5 ..	
	WS66	4:00PM	4:50PM	N/S	.....7	
	WS422	5:40PM	6:30PM	N/S	1 2 3 4 5 ..	
LONDON	WS37/561	12:00PM	8:15PM	CNX	1 . 3 . 5 ..	
	WS37/561	12:00PM	9:15PM	CNX	.....7	
MONCTON	F WS210/828	9:00AM	8:25PM	CNX	1 . 3 . 5 ..	
	WS628/668	11:15AM	9:45PM	CNX	1 2 3 4 5 6 7	
MONTREAL	E WS844	7:30AM	3:15PM	N/S	1 2 3 4 5 6 7	
	WS802/654	8:00AM	5:45PM	CNX	1 2 3 4 5 6 7	
	WS628	11:15AM	7:00PM	N/S	1 2 3 4 5 6 7	
	WS804/652/660	7:40PM	9:10AM+1	2CNX	.....5 . 7	
	WS505/652/660	8:30PM	9:10AM+1	2CNX	1 . 3 4 . ..	
	WS512/652/660	9:05PM	9:10AM+1	2CNX	.....7	
OTTAWA	WS72/540	7:00AM	4:05PM	CNX	1 2 3 4 5 ..	
	WS117/540	7:00AM	4:05PM	CNX	.....7	
	WS126/540	7:00AM	4:05PM	CNX	.....6 .	
	WS690	9:00AM	6:00PM	1 STOP	.....7	
	WS448	10:35AM	8:35PM	2 STOPS	.....6 .	
	WS682/661	11:30AM	8:35PM	CNX	1 2 3 4 5 . 7	
	A WS801	1:00PM	8:35PM	N/S	1 2 3 4 5 6 7	
	WS804/652/693	7:40PM	8:00AM+1	2CNX	.....5 ..	
	WS505/652/583	8:30PM	8:05AM+1	2CNX	1 . 3 4 . ..	
	WS512/652/583	9:05PM	8:05AM+1	2CNX	.....7	
PRINCE GEORGE	WS591	8:00AM	9:05AM	N/S	.....7	
	WS701	8:50AM	9:55AM	N/S	1 2 3 4 5 ..	
	WS57	10:25AM	11:30AM	N/S	.....6 .	
	WS143	3:45PM	4:50PM	N/S	1 2 3 4 5 ..	
	WS411	5:00PM	6:05PM	N/S	.....7	
	WS376	6:55PM	8:00PM	N/S	1 2 3 4 5 ..	
	WS319	8:05PM	9:10PM	N/S	.....7	
	REGINA	WS126	7:00AM	11:03AM	1 STOP	.....6 .
		WS210	9:00AM	12:58PM	1 STOP	1 2 3 4 5 ..
		WS210/20	9:00AM	1:38PM	CNX	.....7
WS45/12		10:05AM	2:05PM	CNX	1 2 3 4 5 ..	
WS128/162		3:00PM	7:58PM	CNX	.....6 .	
WS112/256		3:00PM	8:13PM	CNX/1	1 2 3 4 5 ..	
WS130/440		3:40PM	7:43PM	CNX	.....7	
WS278		6:15PM	10:18PM	1 STOP	.....5 ..	
WS278/356		6:15PM	10:22PM	CNX	1 2 3 4 . ..	
WS278/302		6:15PM	10:42PM	CNX	.....7	
SASKATOON	WS126/51	7:00AM	10:53AM	CNX	.....6 .	
	WS618/41	7:00AM	11:00AM	CNX	1 2 3 4 5 ..	
	WS403	9:00AM	12:15PM	N/S	.....7	
	WS285/549	9:05AM	2:08PM	CNX	.....6 .	
	WS404/454	10:15AM	2:08PM	CNX	1 2 3 4 5 ..	
	A WS824	10:20AM	1:20PM	N/S	1 2 3 4 5 ..	
	WS85	4:10PM	8:03PM	1 STOP	.....7	
	WS212/178	4:25PM	8:38PM	CNX	1 2 3 4 5 ..	
ST. JOHN'S	WS278/98	6:15PM	11:13PM	CNX	.....7	
	WS117/650	7:00AM	9:45PM	CNX/2	.....7	
	WS126/798	7:00AM	9:45PM	CNX/2	.....6 .	
	F WS210/826	9:00AM	9:10PM	CNX	. 2 . 4 . . 7	
THUNDER BAY	F WS285/826	9:05AM	9:10PM	CNX	.....6 .	
	WS117/679	7:00AM	2:30PM	CNX	.....7	
	WS126/435	7:00AM	2:30PM	CNX	.....6 .	
TORONTO	WS802/569	8:00AM	7:30PM	CNX	1 2 3 4 5 ..	
	WS682/759	11:30AM	9:55PM	CNX	.....7	
	WS618/654	7:00AM	3:50PM	CNX	1 2 3 4 5 6 7	
TORONTO	WS802	8:00AM	3:30PM	N/S	1 2 3 4 5 6 7	
	WS690	9:00AM	4:30PM	N/S	.....7	
	WS448	10:35AM	6:55PM	1 STOP	.....6 .	
	WS682	11:30AM	7:00PM	N/S	1 2 3 4 5 . 7	
	B WS626	2:05PM	9:35PM	N/S	1 2 3 4 5 6 7	
	WS816	4:05PM	11:35PM	N/S	1 2 3 4 5 ..	
	WS804/652	7:40PM	6:35AM+1	CNX	.....5 . 7	

Continued on next page • Page suivante

\*Monday/lundi=1, Tuesday/mardi=2, Wednesday/mercredi=3, Thursday/jeudi=4, Friday/vendredi=5, Saturday/samedi=6, Sunday/dimanche=7



## Take out for take off



Many flights don't offer meal service. Now with Food on the Fly, you can enjoy your favourite meal anytime in the comfort of your airplane seat. Visit participating YVR dining outlets for quick, delicious meals packaged especially for travel.



Vancouver International Airport [www.yvr.ca](http://www.yvr.ca)



## Vancouver to/à: continued/suite

	FLIGHT NO./ NO DE VOL	DÉPARTS/ DÉPART	ARRIVÉES/ ARRIVÉE	STOPS/ ARRÊT	*DAYS/ JOURS
TORONTO CONT.	WS505/652	8:30PM	6:35AM+1	CNX	1 • 3 4 • • •
	WS512/652	9:05PM	6:35AM+1	CNX	• • • • • 7
WINDSOR	WS596/706	11:15AM	9:00PM	CNX	• • • • • 6 •
	WS37/706	12:00PM	8:10PM	CNX	• 2 • 4 • • •
WINNIPEG	WS117	7:00AM	12:40PM	1 STOP	• • • • • 7
	WS618/41	7:00AM	1:45PM	CNX/1	1 2 3 4 5 • •
	WS572	8:00AM	1:45PM	1 STOP	• • • • • 6 •
	WS404	10:15AM	4:05PM	1 STOP	1 2 3 4 5 • •
	WS448	10:35AM	3:10PM	N/S	• • • • • 6 •
	WS757	11:30AM	4:05PM	N/S	• • • • • 7
	WS37/510	12:00PM	7:35PM	CNX	• • • • • 7
	WS142/774	12:25PM	7:25PM	CNX/1	• • • • • 6 •
	WS168/110	2:00PM	9:05PM	CNX	1 2 3 4 5 • •
	WS782	5:55PM	10:30PM	N/S	1 2 3 4 5 • •
	WS278	6:15PM	11:54PM	1 STOP	• • • • • 7

## Victoria to/à:

	FLIGHT NO./ NO DE VOL	DÉPARTS/ DÉPART	ARRIVÉES/ ARRIVÉE	STOPS/ ARRÊT	*DAYS/ JOURS	
CALGARY	WS51	7:00AM	9:15AM	N/S	• • • • • 6 •	
	WS41/80	7:10AM	10:53AM	CNX	1 2 3 4 5 • •	
	WS26/716	8:45AM	12:25PM	CNX	• • • • • 7	
	WS454	9:10AM	12:25PM	1 STOP	1 2 3 4 5 • •	
	WS549	9:10AM	12:25PM	1 STOP	• • • • • 6 •	
	WS90	11:15AM	1:30PM	N/S	1 2 3 4 5 • 7	
	WS40	12:25PM	2:40PM	N/S	• • • • • 6 •	
	WS542	2:30PM	4:45PM	N/S	• • • • • 7	
	WS206	4:15PM	7:30PM	1 STOP	• • • • • 6 •	
	WS256	4:20PM	6:35PM	N/S	1 2 3 4 5 • •	
	WS172/523	6:05PM	9:40PM	CNX	• • • • • 7	
	WS502	6:20PM	8:35PM	N/S	1 2 3 4 5 • •	
	WS678	8:30PM	10:45PM	N/S	• • • • 5 • 7	
	EDMONTON	WS41	7:10AM	9:35AM	N/S	1 2 3 4 5 • •
WS26		8:45AM	12:00PM	1 STOP	• • • • • 7	
WS454/12		9:10AM	12:25PM	CNX	1 2 3 4 5 • •	
WS54		9:30AM	11:55AM	N/S	• • • • • 6 •	
WS90/115		11:15AM	3:35PM	CNX	• • • • • 7	
WS90/240		11:15AM	4:45PM	CNX	1 2 3 4 5 • •	
WS193		5:10PM	7:35PM	N/S	• • • • • 7	
WS172		6:05PM	9:20PM	1 STOP	• • • • • 7	
WS193		6:10PM	8:35PM	N/S	1 2 3 4 5 • •	
FORT MCMURRAY		WS454/638/86	9:10AM	4:45PM	2CNX	• • • 4 • • •
		WS90/29	11:15AM	7:05PM	CNX/1	1 2 3 4 5 • •
	WS542/146	2:30PM	8:05PM	CNX/1	• • • • • 7	
	WS172/103	6:05PM	10:50PM	CNX/1	• • • • • 7	
GANDER	WS41/654/798	7:10AM	9:40PM	2CNX/1	1 • 3 • 5 • •	
	C WS820/798	8:00AM	9:40PM	CNX/1	1 • 3 • 5 • •	
GRANDE PRAIRIE	WS41/34	7:10AM	2:13PM	CNX	1 2 3 4 5 • •	
	WS54/148	9:30AM	3:48PM	CNX	• • • • • 6 •	
	WS90/115	11:15AM	4:58PM	CNX/1	• • • • • 7	
HALIFAX	WS51/798	7:00AM	7:20PM	CNX/1	• • • • • 6 •	
	WS41/654/798	7:10AM	7:20PM	2CNX	1 2 3 4 5 • •	
	C WS820/650	8:00AM	7:20PM	CNX	• • • • • 7	
	C WS820/798	8:00AM	7:20PM	CNX	1 2 3 4 5 6 •	
HAMILTON	WS51/435	7:00AM	4:30PM	CNX/1	• • • • • 6 •	
	WS41/618	7:10AM	3:50PM	CNX	1 2 3 4 5 • •	
	WS454/554	9:10AM	6:40PM	CNX/1	1 2 3 4 5 • •	
KELOWNA	WS26	8:45AM	9:34AM	N/S	• • • • • 7	
	WS454	9:10AM	9:59AM	N/S	1 2 3 4 5 • •	
	WS549	9:10AM	9:59AM	N/S	• • • • • 6 •	
	WS206	4:15PM	5:04PM	N/S	• • • • • 6 •	
	WS172	6:05PM	6:54PM	N/S	• • • • • 7	
LONDON	WS90/561	11:15AM	8:15PM	CNX	1 • 3 • 5 • •	
	WS90/561	11:15AM	9:15PM	CNX	• • • • • 7	

Continued on next page • Page suivante

\*Monday/lundi=1, Tuesday/mardi=2, Wednesday/mercredi=3, Thursday/jeudi=4, Friday/vendredi=5, Saturday/samedi=6, Sunday/dimanche=7

## Victoria to/à: continued/suite

	FLIGHT NO./ NO DE VOL	DÉPARTS/ DÉPART	ARRIVÉES/ ARRIVÉE	STOPS/ ARRÊT	*DAYS/ JOURS	
MONCTON	WS454/668	9:10AM	9:45PM	CNX/2	1 2 3 4 5 • •	
	WS549/668	9:10AM	9:45PM	CNX/2	• • • • • 6 •	
MONTREAL	WS41/654	7:10AM	5:45PM	CNX/1	1 2 3 4 5 • •	
	C WS820/654	8:00AM	5:45PM	CNX	1 2 3 4 5 6 7	
	WS454/668	9:10AM	6:57PM	CNX/1	1 2 3 4 5 • •	
	WS549/668	9:10AM	6:57PM	CNX/1	• • • • • 6 •	
	WS454/661/766	9:10AM	8:40PM	2CNX/1	1 2 3 4 5 • •	
	WS502/652/660	6:20PM	9:10AM+1	2CNX	1 • 3 4 5 • •	
OTTAWA	WS678/652/660	8:30PM	9:10AM+1	2CNX	• • • • 5 • 7	
	WS51/540	7:00AM	4:05PM	CNX	• • • • • 6 •	
	WS41/644	7:10AM	5:13PM	CNX	1 2 3 4 5 • •	
	C WS820/690	8:00AM	6:00PM	CNX	• • • • • 7	
	WS26/644	8:45AM	7:38PM	CNX/1	• • • • • 7	
	WS454/661	9:10AM	8:35PM	CNX/2	1 2 3 4 5 • •	
REGINA	WS54/448	9:30AM	8:35PM	CNX/2	• • • • • 6 •	
	WS51/126	7:00AM	11:03AM	CNX	• • • • • 6 •	
	WS26	8:45AM	1:40PM	2 STOPS	• • • • • 7	
	WS454/12	9:10AM	2:05PM	CNX/1	1 2 3 4 5 • •	
	WS54/12	9:30AM	2:05PM	CNX	• • • • • 6 •	
	WS542/440	2:30PM	7:43PM	CNX	• • • • • 7	
	WS256	4:20PM	8:13PM	1 STOP	1 2 3 4 5 • •	
	WS502/278	6:20PM	10:18PM	CNX	• • • • 5 • •	
	WS502/356	6:20PM	10:22PM	CNX	1 2 3 4 • • •	
	SASKATOON	WS51	7:00AM	10:53AM	1 STOP	• • • • • 6 •
WS41		7:10AM	11:00AM	1 STOP	1 2 3 4 5 • •	
WS26/716		8:45AM	1:58PM	CNX/1	• • • • • 7	
WS454		9:10AM	2:08PM	2 STOPS	1 2 3 4 5 • •	
WS549		9:10AM	2:08PM	2 STOPS	• • • • • 6 •	
WS542/85		2:30PM	8:03PM	CNX	• • • • • 7	
ST. JOHN'S	WS256/178	4:20PM	8:38PM	CNX	1 2 3 4 5 • •	
	WS51/798	7:00AM	9:45PM	CNX/2	• • • • • 6 •	
	WS41/654/798	7:10AM	9:45PM	2CNX/1	• 2 • 4 • • •	
	C WS820/650	8:00AM	9:45PM	CNX/1	• • • • • 7	
THUNDER BAY	C WS820/798	8:00AM	9:45PM	CNX/1	• 2 • 4 • 6 •	
	WS51/435	7:00AM	2:30PM	CNX	• • • • • 6 •	
TORONTO	WS51/798	7:00AM	3:45PM	CNX	• • • • • 6 •	
	WS41/654	7:10AM	3:50PM	CNX	1 2 3 4 5 • •	
	C WS820	8:00AM	3:40PM	N/S	1 2 3 4 5 6 7	
	WS454/661	9:10AM	6:50PM	CNX/1	1 2 3 4 5 • •	
	WS54/448	9:30AM	6:55PM	CNX/1	• • • • • 6 •	
	WS90/674	11:15AM	8:15PM	CNX	1 2 3 4 5 • 7	
	WS502/652	6:20PM	6:35AM+1	CNX	1 • 3 4 5 • •	
	WS678/652	8:30PM	6:35AM+1	CNX	• • • • 5 • 7	
	WINDSOR	WS90/706	11:15AM	8:10PM	CNX	• 2 • 4 • • •
		WS40/706	12:25PM	9:00PM	CNX	• • • • • 6 •
WINNIPEG	WS51	7:00AM	1:35PM	2 STOPS	• • • • • 6 •	
	WS41	7:10AM	1:45PM	2 STOPS	1 2 3 4 5 • •	
	WS454/404	9:10AM	4:05PM	CNX/1	1 2 3 4 5 • •	
	WS54	9:30AM	3:13PM	1 STOP	• • • • • 6 •	
	WS90/510	11:15AM	7:35PM	CNX	• • • • • 7	
	WS40	12:25PM	6:00PM	1 STOP	• • • • • 6 •	
	WS256/212	4:20PM	10:10PM	CNX	1 2 3 • 5 • •	
	WS193	5:10PM	10:48PM	1 STOP	• • • • • 7	
	WS502/278	6:20PM	11:55PM	CNX	• • • 4 • • •	

\*Monday/lundi=1, Tuesday/mardi=2, Wednesday/mercredi=3, Thursday/jeudi=4, Friday/vendredi=5, Saturday/samedi=6, Sunday/dimanche=7



Great fares at  
**westjet.com**



**WESTJET**



# Windsor to/à:

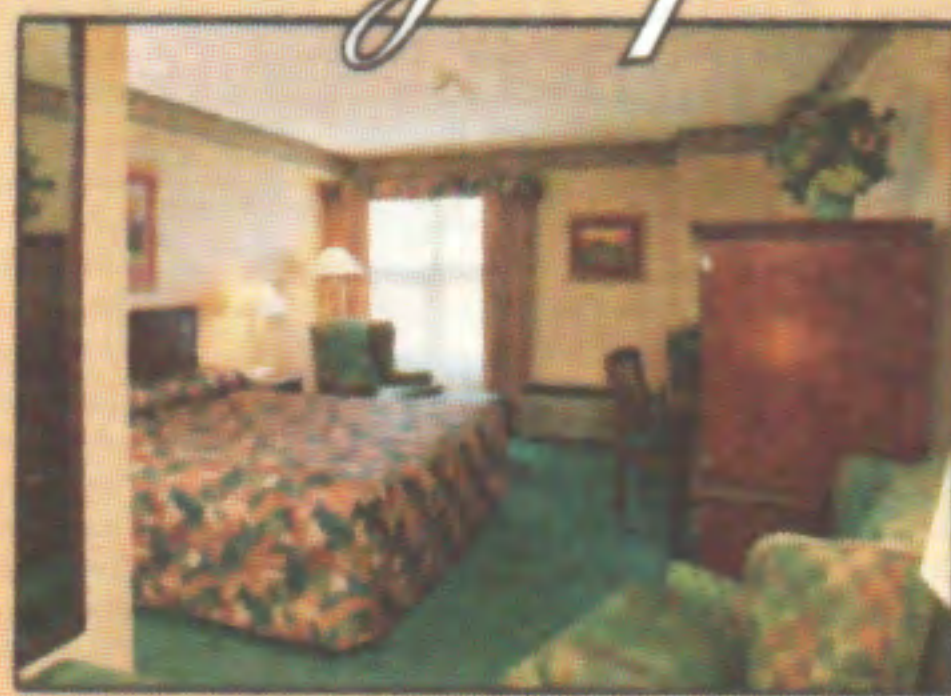
	FLIGHT NO./ NO DE VOL	DÉPARTS/ DEPART	ARRIVÉE/ ARRIVEE	STOPS/ ARRÊT	*DAYS/ JOURS
ABBOTSFORD	WS707/83	7:30AM	12:10PM	CNX	••3•5••
	WS707/101	8:55AM	3:25PM	CNX	••••••7
CALGARY	WS707	7:30AM	9:35AM	N/S	••3•5••
	WS707	8:55AM	11:00AM	N/S	••••••7
COMOX	WS707/150	8:55AM	2:45PM	CNX	••••••7
EDMONTON	WS707/34	7:30AM	12:55PM	CNX	••3•5••
	WS707/115	8:55AM	3:35PM	CNX	••••••7
GRANDE PRAIRIE	WS707/34	7:30AM	2:13PM	CNX/1	••3•5••
	WS707/115	8:55AM	4:58PM	CNX/1	••••••7
KELOWNA	WS707/106	7:30AM	12:35PM	CNX	••3•5••
	WS707/717	8:55AM	4:15PM	CNX	••••••7
PRINCE GEORGE	WS707/663/143	7:30AM	4:50PM	2CNX	••3•5••
	WS707/415/411	8:55AM	6:05PM	2CNX	••••••7
REGINA	WS707/210	7:30AM	12:58PM	CNX	••3•5••
	WS707/20	8:55AM	1:38PM	CNX	••••••7
SASKATOON	WS707/454	7:30AM	2:08PM	CNX	••3•5••
	WS707/716	8:55AM	1:58PM	CNX	••••••7
VANCOUVER	WS707/95	7:30AM	11:15AM	CNX	••3•5••
	WS707/415	8:55AM	2:25PM	CNX	••••••7
VICTORIA	WS707/89	7:30AM	10:45AM	CNX	••3•5••
	WS707/541	8:55AM	2:00PM	CNX	••••••7

\*Monday/lundi=1, Tuesday/mardi=2, Wednesday/mercredi=3, Thursday/jeudi=4, Friday/vendredi=5, Saturday/samedi=6, Sunday/dimanche=7



## More than just great golf

How about a round of world-class golf followed by a soothing full body massage, a delicious dinner and a fantastic night's sleep? That is what awaits you at The Grand Okanagan Lakefront Resort located in the heart of beautiful Kelowna, British Columbia.

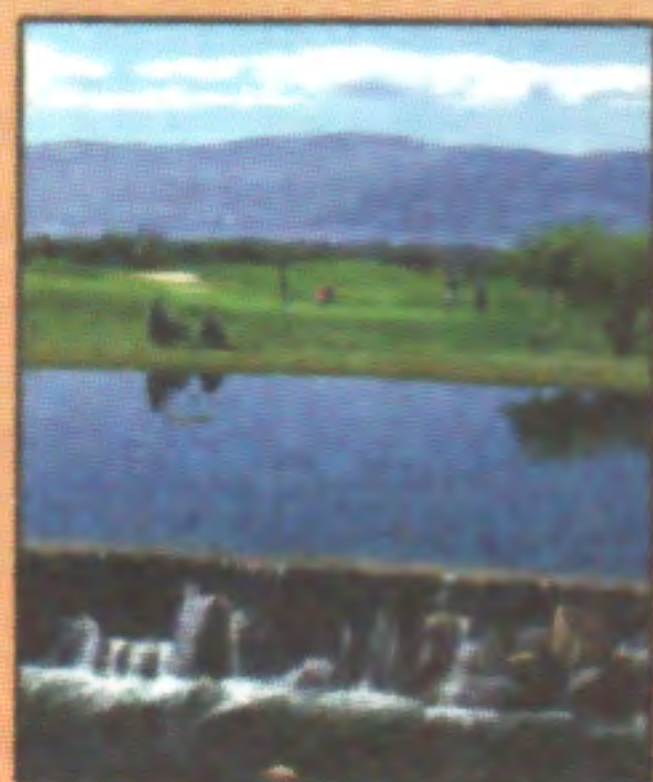


Surrounded by 15 unique and challenging golf courses, The Grand makes for a truly memorable golf get-away. Spend a day on the links and then relax in our European-style spa before enjoying an exquisite dinner in one of our four on-site restaurants.

## THE Grand OKANAGAN

LAKEFRONT RESORT AND CONFERENCE CENTRE

1310 Water Street, Kelowna, B.C.  
V1Y 9P3  
TEL: (250)763-4500  
FAX: (250)763-4565  
RESERVATIONS: 1-800-465-4651  
Website: www.grandokanagan.com  
Email: sales@grandokanagan.com



Call today  
to book your  
Grand Golf  
Getaway!



And now... a travel rewards program that lets you take home a lot more than those little bottles of shampoo.



Now when you check in to any Ramada® hotel in Canada or the U.S., you'll check out with points from TripRewards®, the largest hotel rewards program in travel history.\*

TripRewards and free shampoo. A pretty unbeatable combination.

**RAMADA**  
CANADA

A very good place to be.

RAMADA.CA or 1-800-2-RAMADA

Ramada Canada is a proud partner of **WESTJET**

Book online at **RAMADA.CA** for our best available rate.

© 2004 Ramada Franchise Systems, Inc. All rights reserved. All hotels are independently owned and operated.

\* Based on number of participating hotels.



# Winnipeg to/à:

	FLIGHT NO./ NO DE VOL	DEPARTS/ DEPART	ARRIVES/ ARRIVEE	STOPS/ ARRET	*DAYS/ JOURS	
ABBOTSFORD	WS409	7:00AM	9:00AM	1 STOP	1 2 3 4 5 ●●	
	WS447/83	8:00AM	12:15PM	CNX	●●●●●● 6●	
	WS89/63	8:30AM	10:40AM	CNX	●●●●●● 7	
	WS602/439	1:10PM	3:20PM	CNX	1 2 3 4 5 ●●	
	WS101	1:20PM	3:25PM	1 STOP	●●●●●● 7	
	WS598/84	2:10PM	4:05PM	CNX	●●●●●● 6●	
	WS96	2:15PM	4:20PM	1 STOP	1 2 3 4 5 ●●	
	WS283/149	4:00PM	7:00PM	CNX	●●●●●● 6●	
	WS105/467	4:35PM	7:00PM	CNX	1 2 3 4 5 ●●	
	WS131/144	6:35PM	10:20PM	CNX/1	1 2 3 4 5 ●●	
	WS511/49	6:35PM	10:30PM	CNX	●●●●●● 7	
	CALGARY	WS409	7:00AM	8:04AM	N/S	1 2 3 4 5 ●●
		WS447	8:00AM	9:05AM	N/S	●●●●●● 6●
		WS89	8:30AM	9:34AM	N/S	●●●●●● 7
WS493		10:00AM	11:05AM	N/S	●●●●●● 7	
WS659		10:40AM	11:45AM	N/S	1 2 3 4 5 ●●	
WS602		1:10PM	2:15PM	N/S	1 2 3 4 5 ●●	
WS101		1:20PM	2:24PM	N/S	●●●●●● 7	
WS598		2:10PM	3:14PM	N/S	●●●●●● 6●	
WS96		2:15PM	3:19PM	N/S	1 2 3 4 5 ●●	
WS283		4:00PM	5:04PM	N/S	●●●●●● 6●	
WS105		4:35PM	5:39PM	N/S	1 2 3 4 5 ●●	
WS341		6:35PM	7:39PM	N/S	●●●●●● 6●	
WS511		6:35PM	7:40PM	N/S	●●●●●● 7	
WS131		6:35PM	8:30PM	1 STOP	1 2 3 4 5 ●●	
COMOX	WS409/151	7:00AM	9:40AM	CNX	1 2 3 4 5 ●●	
	WS447/145	8:00AM	10:30AM	CNX	●●●●●● 6●	
	WS89/289	8:30AM	10:45AM	CNX	●●●●●● 7	
	WS598/384	2:10PM	4:55PM	CNX	●●●●●● 6●	
	WS105/271	4:35PM	6:50PM	CNX	●●●●●● 5●●	
EDMONTON	WS711	6:25AM	7:25AM	N/S	1 2 3 4 5 ●●	
	WS113	8:15AM	9:14AM	N/S	●●●●●● 6●	
	WS100	9:00AM	9:59AM	N/S	●●●●●● 7	
	WS659/34	10:40AM	12:55PM	CNX	1 2 3 4 5 ●●	
	WS101/115	1:20PM	3:35PM	CNX	●●●●●● 7	
	WS52	2:00PM	3:45PM	1 STOP	●●●●●● 6●	
	WS68	2:40PM	4:30PM	1 STOP	●●●●●● 7	
	WS773	4:30PM	5:30PM	N/S	1 2 3 4 5 ●●	
	WS758	4:35PM	5:35PM	N/S	●●●●●● 7	
	WS132	5:15PM	6:14PM	N/S	●●●●●● 6●	
	WS511/66	6:35PM	8:50PM	CNX	●●●●●● 7	
	WS131/482	6:35PM	10:55PM	CNX/1	1 2 3 4 5 ●●	
	FORT MCMURRAY	WS773/29	4:30PM	7:05PM	CNX	1 2 3 4 5 ●●
		WS758/146	4:35PM	8:05PM	CNX	●●●●●● 7
WS511/103		6:35PM	10:50PM	CNX/1	●●●●●● 7	
GANDER	WS772/798	10:00AM	9:40PM	CNX/2	1 ● 3 ● 5 ●●	
GRANDE PRAIRIE	WS113/148	8:15AM	3:48PM	CNX	●●●●●● 6●	
	WS659/34	10:40AM	2:13PM	CNX/1	1 2 3 4 5 ●●	
	WS101/115	1:20PM	4:58PM	CNX/1	●●●●●● 7	
HALIFAX	WS108/616	8:00AM	3:58PM	CNX	●●●●●● 6●	
	WS746/616	9:00AM	3:58PM	CNX	1 2 3 4 5 ●●	
	WS772/798	10:00AM	7:20PM	CNX/1	1 2 3 4 5 ●●	
	WS684/628	12:15PM	10:00PM	CNX	●●●●●● 6●	
HAMILTON	WS108	8:00AM	11:15AM	N/S	●●●●●● 6●	
	WS746	9:00AM	12:15PM	N/S	1 2 3 4 5 ●●	
KELOWNA	WS711/44	6:25AM	7:55AM	CNX	1 2 3 4 5 ●●	
	WS113/44	8:15AM	9:55AM	CNX	●●●●●● 6●	
	WS595/142	9:30AM	1:15PM	CNX	●●●●●● 6●	
	WS659/106	10:40AM	12:35PM	CNX	1 2 3 4 5 ●●	
	WS101/717	1:20PM	4:15PM	CNX	●●●●●● 7	
	WS598/503	2:10PM	4:35PM	CNX	●●●●●● 6●	
	WS96/503	2:15PM	4:35PM	CNX	1 2 3 4 5 ●●	
	WS68	2:40PM	5:05PM	2 STOPS	●●●●●● 7	
	WS105/139	4:35PM	7:30PM	CNX	1 2 3 4 5 ●●	
	WS301	6:35PM	9:00PM	2 STOPS	●●●●●● 7	

Continued on next page • Page suivante

\*Monday/lundi=1, Tuesday/mardi=2, Wednesday/mercredi=3, Thursday/jeudi=4, Friday/vendredi=5, Saturday/samedi=6, Sunday/dimanche=7

## How to travel light. Or, more importantly, how to travel light-hearted.



*The wisdom of being protected.* The best way to get your family vacation off to a great start is by getting the travel insurance coverage you actually need. Often, the travel coverage you get from employer benefits and credit cards is more limited than you might expect. Here's how you can make sure your family is always protected.

**"Why do we need insurance if we're travelling in Canada?"**

Provincial health insurance does not always give you full coverage in other provinces. Check your coverage before you leave, so you can buy a travel insurance policy that fills in significant gaps.

**"What are some of the things my insurance should cover?"** The right policy covers more than health costs if you fall ill while travelling. An ear infection, for example, is a small thing but it could prevent a family from flying home. Without the right coverage, the resulting costs – medical expenses, hotel bills and flight cancellation fees – could be considerable.

**"How do we ensure we're fully covered?"** At RBC Insurance®, we do everything in our power to help you travel without a care. Our 24/7 medical emergency service is accessible worldwide. It can provide multilingual assistance with local emergency services. Best of all, you can start your trip with an insurance plan that meets your unique needs.

Visit the partners section at [www.westjet.com](http://www.westjet.com) to buy RBC Travel Insurance.



[www.rbcinsurance.com](http://www.rbcinsurance.com)



Underwritten by RBC Travel Insurance Company.

™Trademark of Royal Bank of Canada. \*Registered trademark of Royal Bank of Canada. Used under license.



# Winnipeg to/à: *continued/suite*

	FLIGHT NO./ NO DE VOL	DÉPARTS/ DEPART	ARRIVES/ ARRIVÉE	STOPS/ ARRÊT	*DAYS/ JOURS
LONDON	WS94	10:15AM	1:23PM	N/S	1 2 3 4 5 ••
	WS300	1:05PM	4:13PM	N/S	•••••• 7
MONCTON	WS108/568	8:00AM	3:55PM	CNX	•••••• 6•
	WS746/568	9:00AM	3:55PM	CNX	1 2 3 4 5 ••
MONTREAL	WS632	8:20AM	11:50AM	N/S	•••••• 7
	WS696	9:55AM	1:25PM	N/S	1 2 3 4 5 ••
	WS684	12:15PM	3:45PM	N/S	•••••• 6•
	E WS732/842	12:45PM	6:55PM	CNX/1	1 2 3 4 5 ••
	WS722/766	2:45PM	8:40PM	CNX	1 2 3 4 5 ••
OTTAWA	WS448/559	3:40PM	8:40PM	CNX	•••••• 6•
	WS109	9:05AM	1:25PM	1 STOP	•••••• 6•
	WS772	10:00AM	1:24PM	N/S	1 2 3 4 5 ••
	WS732	12:45PM	6:35PM	2 STOPS	1 2 3 4 5 ••
PRINCE GEORGE	WS722/661	2:45PM	8:35PM	CNX	1 2 3 4 5 ••
	WS414/661	2:55PM	8:35PM	CNX/1	•••••• 7
	WS448	3:40PM	8:35PM	1 STOP	•••••• 6•
	WS447/57	8:00AM	11:30AM	CNX/1	•••••• 6•
	WS101/411	1:20PM	6:05PM	CNX/1	•••••• 7
REGINA	WS781/376	4:20PM	8:00PM	CNX	1 2 3 4 5 ••
	WS758/17/319	4:35PM	9:10PM	2CNX	•••••• 7
	WS131	6:35PM	6:40PM	N/S	1 2 3 4 5 ••
	WS301	6:35PM	6:40PM	N/S	•••••• 7
SASKATOON	WS409/28	7:00AM	10:23AM	CNX	1 2 3 4 5 ••
	WS447/51	8:00AM	10:53AM	CNX	•••••• 6•
	WS89/67	8:30AM	11:28AM	CNX	•••••• 7
	WS659/454	10:40AM	2:08PM	CNX	1 2 3 4 5 ••
	WS52	2:00PM	2:20PM	N/S	•••••• 6•
	WS68	2:40PM	3:00PM	N/S	•••••• 7
	WS107	4:20PM	4:40PM	N/S	1 2 3 4 5 ••
	WS723	6:35PM	7:00PM	N/S	1 2 3 4 5 ••
	WS723	8:40PM	9:05PM	N/S	•••••• 7
	ST. JOHN'S	WS772/798	10:00AM	9:45PM	CNX/2
THUNDER BAY	WS109	9:05AM	11:13AM	N/S	•••••• 6•
	WS732	12:45PM	2:53PM	N/S	1 2 3 4 5 ••
	WS414	2:55PM	5:03PM	N/S	•••••• 7
TORONTO	WS720	9:00AM	12:15PM	N/S	1 2 3 4 5 ••
	WS634	2:45PM	6:00PM	N/S	•••••• 7
	WS722	2:45PM	6:00PM	N/S	1 2 3 4 5 ••
	WS448	3:40PM	6:55PM	N/S	•••••• 6•
	WS198	8:05PM	11:20PM	N/S	1 2 3 4 5 ••
	WS510	8:05PM	11:20PM	N/S	•••••• 7
	WS720	9:00AM	12:15PM	N/S	1 2 3 4 5 ••
VANCOUVER	WS409/598	7:00AM	9:45AM	CNX	1 2 3 4 5 ••
	WS595	9:30AM	10:35AM	N/S	•••••• 6•
	WS756	9:55AM	11:00AM	N/S	•••••• 7
	WS659/167	10:40AM	1:25PM	CNX	1 2 3 4 5 ••
	WS602/211	1:10PM	3:50PM	CNX	1 2 3 4 5 ••
	WS101/84	1:20PM	3:35PM	CNX	•••••• 7
	WS598	2:10PM	4:15PM	1 STOP	••~•••• 6•
	WS781	4:20PM	5:25PM	N/S	1 2 3 4 5 ••
	WS758/17	4:35PM	6:33PM	CNX	••~•••• 7
	WS341	6:35PM	8:30PM	1 STOP	••~•••• 6•
	WS511	6:35PM	8:35PM	1 STOP	••~•••• 7
	WS723/613	6:35PM	9:30PM	CNX/1	••~••• 5 ••
	VICTORIA	WS711/501	6:25AM	8:34AM	CNX
WS409/89		7:00AM	10:45AM	CNX	1 2 3 4 5 ••
WS447/43		8:00AM	12:00PM	CNX	••~•••• 6•
WS89		8:30AM	10:45AM	1 STOP	••~•••• 7
WS493/541		10:00AM	2:00PM	CNX	••~•••• 7
WS602/255		1:10PM	3:50PM	CNX	1 2 3 4 5 ••
WS101/717		1:20PM	5:35PM	CNX/1	••~•••• 7
WS598/503		2:10PM	5:55PM	CNX/1	••~•••• 6•
WS96/503		2:15PM	5:55PM	CNX/1	1 2 3 4 5 ••
WS105/651		4:35PM	8:00PM	CNX	••~••• 5 ••
WS131/531		6:35PM	9:40PM	CNX/1	1 2 3 4 5 ••

\*Monday/lundi=1, Tuesday/mardi=2, Wednesday/mercredi=3, Thursday/jeudi=4, Friday/vendredi=5, Saturday/samedi=6, Sunday/dimanche=7

4 round-trip flights  
to Vancouver: affordable  
going on a family trip and not  
having to stop for directions: priceless

there are some things money can't buy.  
for everything else there's MasterCard.®



MasterCard is a proud partner of



[www.mastercard.ca](http://www.mastercard.ca)