

# BRITISH CONTINENTAL AIRWAYS

● HAMBURG  
LONDON ● COPENHAGEN  
● STOCKHOLM

● ANTWERP  
LONDON ● AMSTERDAM

LIVERPOOL ● AMSTERDAM  
DONCASTER

LONDON ● LILLE

BRUSSELS  
LONDON ● OSTEND  
LE ZOUTE

# SUMMER TIME TABLE 1936



# BRITISH CONTINENTAL AIRWAYS LIMITED

MEMBER OF THE INTERNATIONAL AIR TRAFFIC ASSOCIATION

## THE BRITISH AIR LINE

- AMSTERDAM
- ANTWERP
- BRUSSELS
- COPENHAGEN
- DONCASTER
- HAMBURG
- LE ZOUTE
- LILLE
- LIVERPOOL
- LONDON
- MALMÖ
- OSTEND
- STOCKHOLM

### MAIN BOOKING OFFICES

<b>AMSTERDAM</b>	Koninklijke Luchtvaart Maatschappij, Leidscheplein.	Tel. : 25039
<b>ANTWERP</b>	British Continental Airways, Ltd.	Tel. : 218,67 (Town) 953,26 (Airport)
<b>BRUSSELS</b>	Cie. Dens Océan, S.A., 52, Meir	Tel. : 12.73.65 (Town) 15.05.07 (Airport)
<b>COPENHAGEN</b>	Det Danske Luftfartselskab, Vesterport, Meldahlsgade 5.	Tel. : Central 8800
<b>DONCASTER</b>	British Continental Airways, Ltd., Doncaster Airport.	Tel. : 4710 (Day) 4711 (Night)
<b>HAMBURG</b>	Deutsche Lufthansa A.G., Fuhlsbüttel.	Tel. : 595540 (Local) 597741 (Trunk)
<b>LE ZOUTE</b>	British Continental Airways, Ltd., 4, Rue de la Brise.	Tel. : 1025
<b>LILLE</b>	British Continental Airways, Ltd., Le Strasbourg Hotel.	Tel. : 14.44, 14.45 31884 (Airport)
<b>LIVERPOOL</b>	British Continental Airways, Ltd., Speke Airport.	Tel. : Garston 641
<b>LONDON</b>	British Continental Airways, Ltd.	Tel. : Croydon 6101 (Day) Croydon 1256 (Night)
<b>MALMÖ</b>	A. B. Aerotransport.	Tel. : 11109 (Day) 19960 (Night)
<b>OSTEND</b>	Central Station. H. Abeele.	Tel. : 1703 (Day) 1850 (Night)
<b>STOCKHOLM</b>	Ecole d'Aviation d'Ostende. A. B. Aerotransport, Flugpavillon, Nybroplan.	Tel. : 103815

General Agents Throughout England  
E. H. MUNDY & CO., LTD.

Walsingham House, Seething Lane, E.C.3. Tel.: Royal 4463

In addition to the offices shown above, the principal air transport companies in Europe and most travel bureaux, etc., can supply information regarding the services mentioned in this time table.

British Continental Airways acts as agents for all air transport companies affiliated to the International Air Traffic Association, and can accept bookings on all their services.

### YOU CAN BOOK THROUGH

NO BOOKING FEE

# BRITISH CONTINENTAL AIRWAYS

● HAMBURG  
LONDON ● COPENHAGEN  
● STOCKHOLM

LONDON ● ANTWERP  
● AMSTERDAM

LIVERPOOL ● AMSTERDAM  
DONCASTER

LONDON ● LILLE

BRUSSELS  
LONDON ● OSTEND  
LE ZOUTE

# SUMMER TIME TABLE 1936



# INSURANCE

F. W. JONES AND PARTNERS  
have established a reputation  
as specialists in all branches of  
insurance



You are  
cordially invited  
to take advantage of  
their unrivalled knowledge  
and experience, gained from  
an intensive study of modern  
insurance requirements.

A staff of experts is at  
your service day  
and night



F. W. JONES  
AND PARTNERS  
LIMITED

THE AVIATION INSURANCE BROKERS

THANET HOUSE  
HIGH STREET  
CROYDON

DAY TELEPHONES:  
CROYDON 5155  
CROYDON 5156

NIGHT TELEPHONES:  
● SPRINGPARK 1891  
WALLINGTON 3887

TELEGRAMS: JONAVIAN, CROYDON



## THE DUAL BURBERRY

*Weatherproof & Overcoat in One*

Turn the weatherproof side outside for wet weather. Turn the overcoat side outside for fine weather. No one has ever got wet, through The Dual Burberry.

It is comforting because cold winds cannot blow through the close fine weave. It is more healthful because it ventilates naturally yet gives perfect protection under all weather conditions.

*Illustrations, patterns and prices sent on mention of this publication.*

**BURBERRYS** LTD. HAYMARKET  
LONDON, S.W.1





BY APPOINTMENT

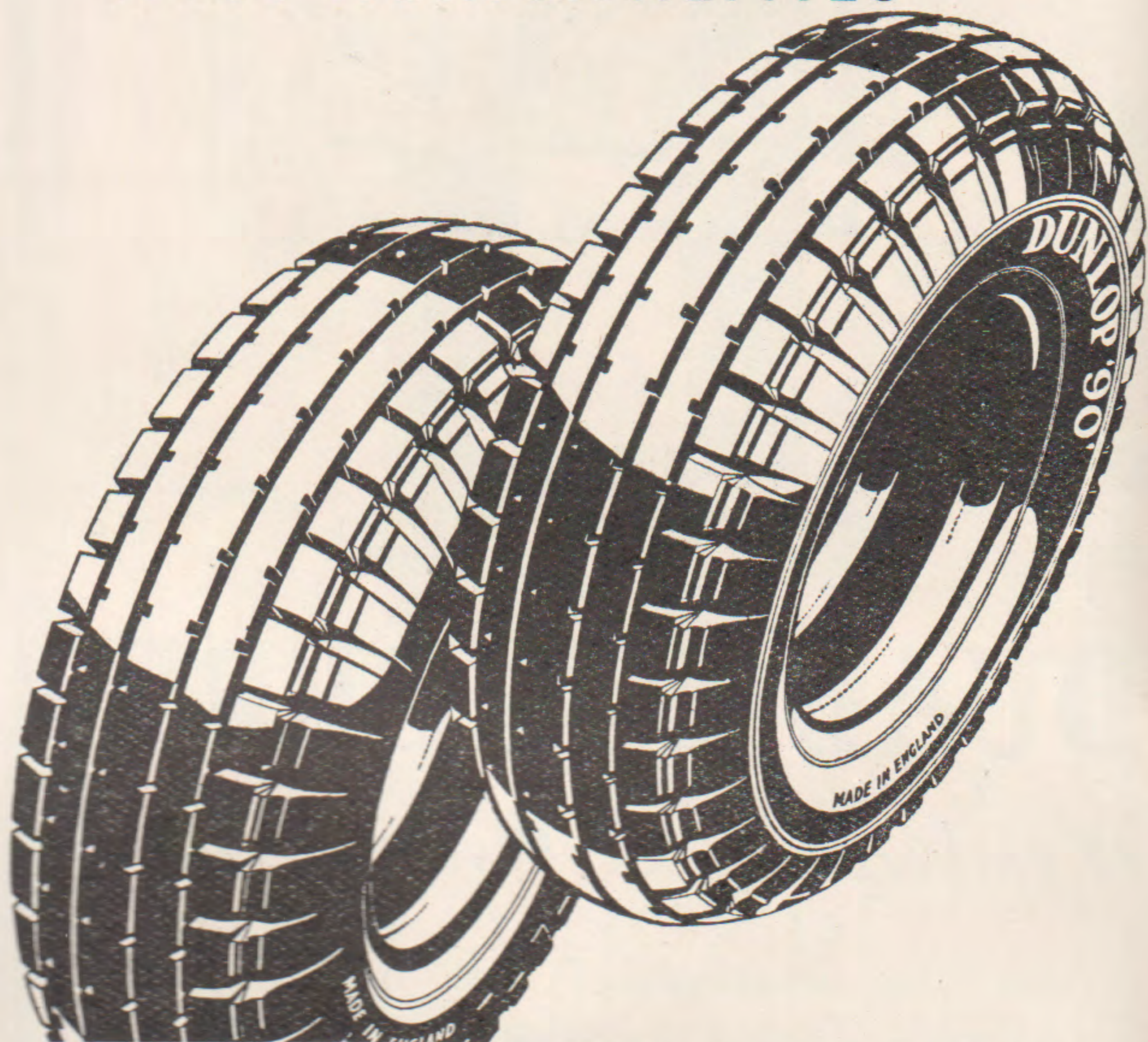
# DUNLOP TYRES

have behind them

*An unequalled record  
of satisfactory performance*

They are fitted by:—

- MOST CAR MANUFACTURERS
- MOST RACING MEN
- MOST PRIVATE MOTORISTS
- MOST BIG FLEET OPERATORS
- MOST MUNICIPALITIES



# DUNLOP

# 90

## The World's Master Tyres

DUNLOP RUBBER CO. LTD., FORT DUNLOP, BIRMINGHAM  
Branches throughout the World.

C.F.H.

# INDEX OF SERVICES

OPERATED BY BRITISH CONTINENTAL AIRWAYS

	PAGES
AMSTERDAM . . . . .	7, 10, 15
ANTWERP . . . . .	7
BRUSSELS . . . . .	9
COPENHAGEN . . . . .	10
DONCASTER . . . . .	15
HAMBURG . . . . .	10
LE ZOUTE . . . . .	13
LILLE . . . . .	9
LIVERPOOL . . . . .	15
LONDON . . . . .	7, 9, 10, 13
MALMÖ . . . . .	10
OSTEND . . . . .	13
STOCKHOLM . . . . .	10

N.B.—Normal services will be operated on Whit Monday, 1st June, and August Bank Holiday, 3rd August.

The 24-hour clock system  
is used throughout this time table.

- AIR EXPRESS PARCELS SERVICE
- TO ANYWHERE IN EUROPE
- BY BRITISH CONTINENTAL AIRWAYS

Telephone: Croydon 6101, Extension 4. Telegrams: Briconairways, Croydon  
AIRPORT OF LONDON · CROYDON · SURREY

### IT'S QUICKER BY AIR

## GENERAL INFORMATION FOR PASSENGERS

**AIRCRAFT** ● All services are operated by fast multi-engined aircraft. The large and well-lighted saloon cabins are luxuriously appointed with lounge chairs which ensure relaxed and restful flying comfort, at the same time offering a wide field of view. Heating and ventilation can be instantly controlled by each passenger to suit individual taste. Double soundproof walls, with special insulation between, reduce noise to a minimum and make conversation easy and pleasurable. When in flight all aircraft are in constant touch by radio with ground stations along the route.

**BAGGAGE** ● Each passenger is allowed 15 kgs. (33 lbs.) of baggage free of charge. Excess baggage over this weight may be carried subject to accommodation being available, and, for the first 15 kgs. (33 lbs.) in excess of the free allowance, is charged for at the rates shown against each service in this time-table. For each kg. (2.2 lbs.) after the first 15 kgs. (33 lbs.) in excess, half the published rates is charged. Passengers' baggage must only contain personal effects. By Customs regulations all merchandise must be declared separately as freight, in order that it may be entered on the aircraft manifest.

**BREAK OF JOURNEY** ● A journey may usually be broken at any stage, provided the passenger expresses his wish to do so when reserving accommodation, and provided the length of stay does not exceed seven days. A surcharge of 7s. 6d. must be paid in advance for each break of journey. The passenger must himself reserve accommodation for the remaining stage or stages.

**CAMERAS** ● As the carriage and use of cameras in certain countries is governed by restrictions, passengers must declare cameras to an official of the company on arriving for embarkation. In the event of a breach of the regulations in any country the passenger will be held personally responsible to the authorities of the country concerned.

**CANCELLATION** ● In the event of a passenger wishing to cancel his reservation, the full fare will be refunded less a cancellation fee of 10 per cent. and less the cost of any telephone calls and/or telegrams incurred by the cancellation. Notice of cancellation must be received, and the tickets returned, at least 24 hours before the advertised time of departure, and when the fare exceeds F. Frs. 500 at least 48 hours. Should a cancellation be made after the time specified above, refund of the fare, less the 10 per cent. cancellation fee, will only be made provided the seat has been disposed of at the full fare.

**CHILDREN** ● Children under three years of age and accompanied by an adult are charged 10 per cent. of the full fare. Children between the ages of three and seven are charged at half the full fare. The free baggage allowance for children between the ages of three and seven is 15 kgs. (33 lbs.). No baggage allowance is made for children under three years of age.

**CONDITIONS OF CARRIAGE** ● An extract from the conditions under which passengers are carried by British Continental Airways, Limited, will be found inside the cover of every ticket. A copy of the *General Conditions of Carriage of Passengers and Baggage* may be inspected at any of the company's offices.



# THEY SAY IT IS LONDON'S BEST HOTEL

Travellers from all over the World return to **Grosvenor House**; they say it is London's best hotel. They like the light airy rooms, so comfortable and convenient. They like the gay social life that centres in the hotel, and its bright Cabarets.

The situation is so very pleasant and central too: facing Hyde Park, London's great garden, with shops and theatres nearby.

**SINGLE ROOMS** **DOUBLE ROOMS**  
from 21/- a day • from 31/6 a day  
All bedrooms have private bathrooms  
**SUITES FROM 42/- A DAY**

## GROSVENOR HOUSE P A R K L A N E L O N D O N

CABLES: GROVHOWS, AUDLEY, LONDON

# FANE'S CAR HIRE

&

## GARAGE SERVICE

HEAD OFFICE:  
190 WALTON ST., S.W.3

COUNTRY PER MILE		TOWN PER HOUR
6d	AUSTIN	5/6
8d	ARMSTRONG	6/6
9d	DAIMLER	7/6

PHONE:

KENSINGTON 8211 • PRIMROSE 2277  
ELSTREE 1388 • CROYDON 1101

**RESERVE YOUR PRIVATE CAR  
FOR LONDON AND TOURING**

### GENERAL INFORMATION FOR PASSENGERS—cont.

**DEPARTURES** ● Passengers must be at the town terminus or airport of departure at least fifteen minutes before the advertised time of departure to enable the necessary formalities to be completed in time to ensure the punctual departure of the service. No service can be delayed for passengers arriving late.

**GROUND TRANSPORT** ● Transport by car, where provided, between the town terminus and the airport of departure, or vice versa, is included in the fare.

**LIVESTOCK** ● Provided accommodation is available dogs and other livestock may travel in the same aircraft as passengers. They must, however, be crated and placed in the freight compartment. A charge of 50 per cent. of the excess baggage rate is made.

**MEALS** ● On long-distance services time is generally allowed for light meals at the airports *en route*, but luncheon baskets may be obtained at all airports, provided they are ordered at the time of booking.

**PASSPORTS** ● Passengers are reminded that passports must be carried on the person. Special week-end "No Passport Tickets," valid from Friday to Tuesday, are available between London-Ostend, London-Le Zoute, London-Brussels, etc., for British subjects, or French and Belgian subjects resident in the United Kingdom, although some form of identification card must be carried.

**PUNCTUALITY** ● Although every effort is made to ensure the punctuality of all services, the company cannot accept responsibility for any delay to or suspension of its services, due to *force majeure* or other causes.

**REFUNDS** ● If a passenger is unable to use the return half of a ticket, and provided no accommodation has been reserved, the difference between the single and return fares will be refunded. In the event of the cancellation of a service, or if the aircraft returns to the airport of departure, the value of the ticket, together with the amount paid for excess baggage, if any, will be refunded. In the event of an interrupted journey a refund will be made corresponding to the uncompleted mileage, unless the company provides other means of suitable transport. No claim for refund of the fare paid can be considered if an intending passenger does not arrive or arrives too late for a service for which reservation has been made.

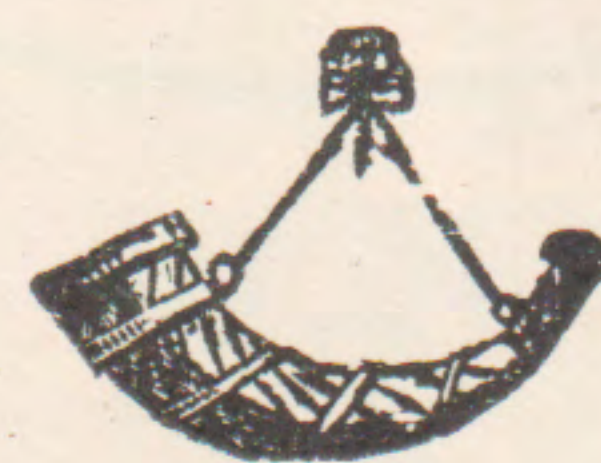
**RESERVATIONS** ● Seats should be booked in advance through any office of British Continental Airways or their general agents. The cost of any necessary trunk telephone calls or telegrams will be charged to the passenger. Reservations by telephone or telegram will only be accepted on receipt of a telegraphic remittance, or a remittance by subsequent post. In no instance can accommodation be held following the receipt of a telephone message or telegram to the exclusion of other passengers who are prepared to take up their tickets, unless accompanied by such remittance.

**RETURN TICKETS** ● A substantial reduction is made on a return ticket when purchased at the same time as the ticket for the outward journey. A return ticket does not entitle the holder to any preferential claim for accommodation. Return tickets are valid for 60 days from the date of departure.

**TIME TABLES** ● This time table cancels all previous issues and is subject to alteration without notice. Although every care has been taken in preparation, the company cannot accept responsibility for printing errors or any consequences arising therefrom.

**VOUCHER BOOKS** ● Season Travel Voucher Books (*Carnet de Billets*), entitling the holder and, if required, his wife and two children, to a reduction of 15 per cent. on the official published fares, are available for use on any services operated by the air transport companies affiliated to the International Air Traffic Association. Business houses can obtain a similar concession by purchasing Bulk Travel Voucher Books for the use of bona-fide members of their staff travelling on the firm's business. These Voucher Books may be obtained from British Continental Airways.

BUGLE



BRAND

IS THE PERFECT BOTTLING OF

**BASS & GUINNESS**

BY

**M. B. FOSTER & SONS LTD.**



# AMSTEL HOTEL AMSTERDAM

THE LEADING FIRST-CLASS  
HOTEL OF THE CITY  
On the banks of the River Amstel  
Open-air Dining Terrace.  
Every Modern Comfort.

Rooms from Fl.4.50  
(with private Bathroom from Fl.6)  
Including full Dutch Breakfast.

CONDUCTOR AT THE AIRPORT  
"SCHIPHOL"

For particulars apply London Representative : Hilda Hanford  
12 Henrietta St., Strand, W.C.2. Telephone : Temple Bar 1178  
or Travel Agents



LOCAL TIMES SHOWN THROUGHOUT

## LONDON - ANTWERP - AMSTERDAM

OPERATED BY BRITISH CONTINENTAL AIRWAYS

20 APRIL TO 3 OCTOBER INCLUSIVE

DAILY SERVICE, SUNDAYS EXCEPTED

LONDON (Horseferry House)	dep.	07.40
AIRPORT OF LONDON (Croydon)	dep.	08.30
ANTWERP (Deurne Airport)	arr.	10.20
ANTWERP (Deurne Airport)	dep.	10.35
AMSTERDAM (Schiphol Airport)	arr.	10.45*
AMSTERDAM (Leidscheplein)	arr.	11.20*

*N.B.—After 1st July this service offers a connection at Amsterdam with the K.L.M. service to Copenhagen, Malmö, and Stockholm.*

## AMSTERDAM - ANTWERP - LONDON

AMSTERDAM (Leidscheplein)	dep.	11.05*
AMSTERDAM (Schiphol Airport)	dep.	11.40*
ANTWERP (Deurne Airport)	arr.	13.10
ANTWERP (Deurne Airport)	dep.	13.20
AIRPORT OF LONDON (Croydon)	arr.	15.10
LONDON (Horseferry House)	arr.	16.00

*N.B.—This service offers an immediate connection at Amsterdam, for Antwerp and London, with the K.L.M./A.B.A. service from Malmö and Copenhagen.*

## FARES AND EXCESS BAGGAGE RATES

	SINGLE FARE	RETURN FARE Valid 60 days	EXCESS BAGGAGE Per Kg.
<b>AMSTERDAM</b>			
● ANTWERP	Fls. 14	Fls. 25.20	Fls. 0.15
● LONDON	Fls. 42	Fls. 75.60	Fls. 0.40
<b>ANTWERP</b>			
● AMSTERDAM	B. Frs. 290	B. Frs. 525	B. Frs. 2
● LONDON	B. Frs. 550	B. Frs. 935	B. Frs. 5.50
<b>LONDON</b>			
● AMSTERDAM	£5 10s. 0d.	£9 18s. 0d.	1s. 1d.
● ANTWERP	£4 0s. 0d.	£6 16s. 0d.	9d.

\* Add one hour after 15th May owing to Netherlands summer time.

## FOR THE AIR TRAVELLER

THE MOST COMPLETE AIR TIME TABLE  
CONTAINING ALL THE AIR SERVICES OF  
GT. BRITAIN, EUROPE AND TO AFRICA,  
INDIA AND THE EAST. FARES. BOOKING  
OFFICES. DISTANCES. MAPS, ETC., ETC.  
CONCISE AIR MAIL INFORMATION.



OFFICIALLY EVERY MONTH

By Appointment

PRICE 1/- **BRADSHAW'S** Postage 3d.  
INTERNATIONAL  
**AIR GUIDE**

From Bradshaw House, Surrey St., London, W.2  
Also Airports and Bookstalls.

FOR BOOKING OFFICES SEE BACK COVER



WHEN VISITING LONDON  
STAY AT THE MAY FAIR



# The May Fair Hotel

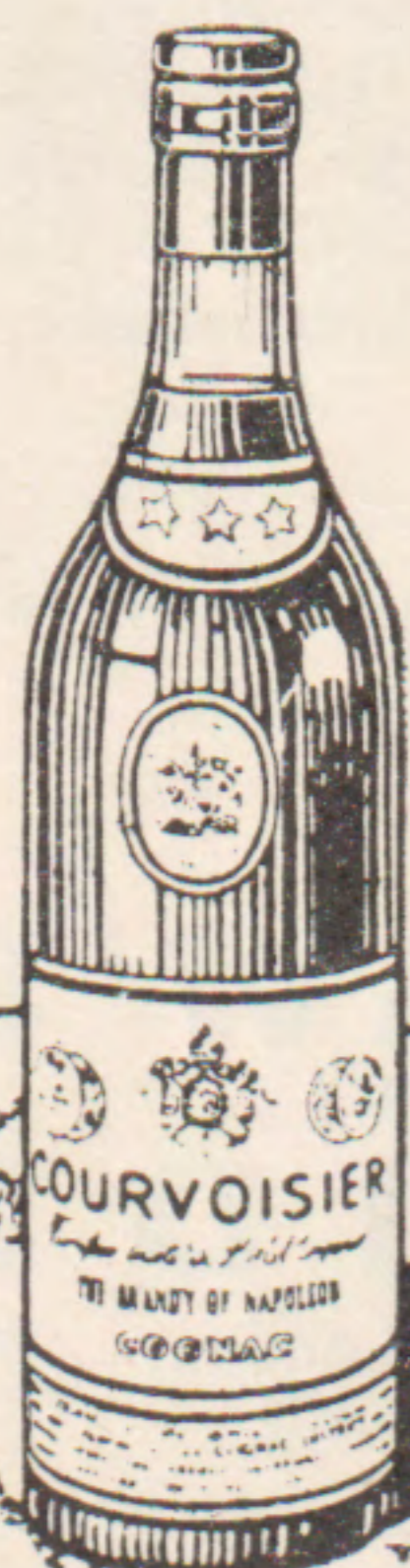
The May Fair is universally renowned for the excellence of its cuisine, service, and charming apartments.

All-Star Cabaret and dancing nightly to Harry Roy and His Band in "Le Jardin Fleuri."

Managing Director Francis Towle  
BERKELEY SQUARE, W.1. Mayfair 7777

# COURVOISIER COGNAC

STANDS FOR QUALITY



THE BRANDY OF NAPOLEON

LOCAL TIMES SHOWN THROUGHOUT

## LONDON - BRUSSELS

OPERATED BY BRITISH CONTINENTAL AIRWAYS

20 APRIL TO 3 OCTOBER INCLUSIVE

DAILY SERVICE, SUNDAYS EXCEPTED

LONDON (Horseferry House)	dep.	07.10
AIRPORT OF LONDON (Croydon)	dep.	08.00
BRUSSELS (Haren Airport)	arr.	09.50
BRUSSELS (36, Rue d' Arenberg)	arr.	10.05

### BRUSSELS - LONDON

BRUSSELS (36, Rue d'Arenberg)	dep.	10.30
BRUSSELS (Haren Airport)	dep.	11.00
AIRPORT OF LONDON (Croydon)	arr.	13.00
LONDON (Horseferry House)	arr.	13.50

### FARES AND EXCESS BAGGAGE RATES

	SINGLE FARE	RETURN FARE Valid 60 days	EXCESS BAGGAGE Per Kg.
BRUSSELS			
● LONDON	B. Frs. 550	B. Frs. 935	B. Frs. 5.50
LONDON			
● BRUSSELS	£4 0s. 0d.	£6 16s. 0d.	9d.

## LONDON - LILLE

OPERATED BY BRITISH CONTINENTAL AIRWAYS

20 APRIL UNTIL FURTHER NOTICE

DAILY SERVICE, SUNDAYS EXCEPTED

LONDON (Horseferry House)	dep.	08.10
AIRPORT OF LONDON (Croydon)	dep.	09.00
LILLE (Ronchin Airport)	arr.	10.45
LILLE (Le Strasbourg Hotel)	arr.	11.00

### LILLE - LONDON

LILLE (Le Strasbourg Hotel)	dep.	17.30
LILLE (Ronchin Airport)	dep.	18.00
AIRPORT OF LONDON (Croydon)	arr.	20.00
LONDON (Horseferry House)	arr.	20.50

### FARES AND EXCESS BAGGAGE RATES

	SINGLE FARE	RETURN FARE Valid 60 days	EXCESS BAGGAGE Per Kg.
LILLE			
● LONDON	F. Frs. 259	F. Frs. 425.50	F. Frs. 2.75
LONDON			
● LILLE	£3 10s. 0d.	£5 15s. 0d.	9d.

## LE STRASBOURG HOTEL · LILLE

15 GRAND' PLACE. Telephone: 14.44 and 14.45

BRITISH CONTINENTAL AIRWAYS' OFFICE

Comfortable Hotel · Well-known Restaurant · American Bar  
REASONABLE RATES.

FOR BOOKING OFFICES SEE BACK COVER



LOCAL TIMES SHOWN THROUGHOUT

**LONDON-AMSTERDAM-HAMBURG-COPENHAGEN-MALMÖ-STOCKHOLM  
AND  
STOCKHOLM-MALMÖ-COPENHAGEN-HAMBURG-AMSTERDAM-LONDON**

OPERATED BY BRITISH CONTINENTAL AIRWAYS

(Connecting at Hamburg with the Magdeburg and Erfurt services of Deutsche Lufthansa A.G.)

**DAILY SERVICE, SUNDAYS EXCEPTED**

	20th April to 30th June inclusive	20th April to 1st August inclusive	1st July until further notice
LONDON (Horseferry House) . dep.	10.10	—	09.10
AIRPORT OF LONDON (Croydon) dep.	11.00	—	10.00
AMSTERDAM (Schiphol Airport) . arr.	12.25*	—	12.25
AMSTERDAM (Schiphol Airport) . dep.	12.40*	—	12.40
HAMBURG (Fuhlsbüttel Airport) . arr.	15.30	—	14.30
HAMBURG . . . . . dep.	—	15.35	—
MAGDEBURG . . . . . arr.	—	16.30	—
ERFURT . . . . . arr.	—	17.20	—
HAMBURG (Fuhlsbüttel Airport) . dep.	16.00	—	15.00
COPENHAGEN (Kastrup Airport) arr.	17.35	—	16.35
COPENHAGEN (Kastrup Airport) dep.	17.50	—	16.50
MALMÖ (Bulltofta Airport) . . . . . arr.	18.05	—	17.05
MALMÖ (Bulltofta Airport) . . . . . dep.	—	—	17.20
STOCKHOLM (Bromma Airport) . arr.	—	—	20.15
STOCKHOLM (Flugpavillon) . . . . . arr.	—	—	20.45
STOCKHOLM (Flugpavillon) . . . . . dep.	—	—	07.00
STOCKHOLM (Bromma Airport) . . . . . dep.	—	—	07.30
MALMÖ (Bulltofta Airport) . . . . . arr.	—	—	10.30
MALMÖ (Bulltofta Airport) . . . . . dep.	10.00	—	10.45
COPENHAGEN (Kastrup Airport) arr.	10.15	—	11.00
COPENHAGEN (Kastrup Airport) dep.	10.30	—	11.15
HAMBURG (Fuhlsbüttel Airport) . arr.	12.05	—	12.50
ERFURT . . . . . dep.	—	09.45	—
MAGDEBURG . . . . . dep.	—	10.25	—
HAMBURG . . . . . arr.	—	11.30	—
HAMBURG (Fuhlsbüttel Airport) . dep.	13.00	—	13.45
AMSTERDAM (Schiphol Airport) . arr.	14.30*	—	16.15
AMSTERDAM (Schiphol Airport) . dep.	14.50*	—	16.35
AIRPORT OF LONDON (Croydon) arr.	17.35	—	18.20
LONDON (Horseferry House) . . . . . arr.	18.25	—	19.10

\* Add one hour after 15th May owing to Netherlands summer time.

**FARES AND EXCESS BAGGAGE RATES**

	SINGLE FARE	RETURN FARE Valid 60 days	EXCESS BAGGAGE Per Kg.
<b>AMSTERDAM</b>			
● COPENHAGEN	Fls. 66	Fls. 118.80	Fls. 0.50
● HAMBURG	Fls. 32	Fls. 57.60	Fls. 0.30
● LONDON	Fls. 42	Fls. 75.60	Fls. 0.40
● MALMÖ	Fls. 70	Fls. 126	Fls. 0.50
● STOCKHOLM	Fls. 105	Fls. 189	Fls. 0.80
<b>COPENHAGEN</b>			
● AMSTERDAM	D. Kr. 178	D. Kr. 320.40	D. Kr. 1
● HAMBURG	D. Kr. 85	D. Kr. 153	D. Kr. 0.85
● LONDON	D. Kr. 240	D. Kr. 432	D. Kr. 1.25
● MALMÖ	D. Kr. 10	D. Kr. 17	D. Kr. 0.10
● STOCKHOLM	D. Kr. 105	D. Kr. 189	D. Kr. 0.80
<b>HAMBURG</b>			
● AMSTERDAM	R.M. 53	R.M. 95.40	R.M. 0.55
● COPENHAGEN	R.M. 50	R.M. 90	R.M. 0.50
● LONDON	R.M. 120	R.M. 216	R.M. 1
● MALMÖ	R.M. 57	R.M. 102.60	R.M. 0.55
● STOCKHOLM	R.M. 120	R.M. 216	R.M. 0.90
<b>LONDON</b>			
● AMSTERDAM	£5 10s. 0d.	£9 18s. 0d.	1s. 1d.
● COPENHAGEN	£12 10s. 0d.	£22 10s. 0d.	1s. 7d.
● HAMBURG	£8 15s. 0d.	£15 15s. 0d.	1s. 2d.
● MALMÖ	£13 0s. 0d.	£23 8s. 0d.	1s. 7d.
● STOCKHOLM	£17 15s. 0d.	£31 19s. 0d.	2s. 4d.
<b>MALMÖ</b>			
● AMSTERDAM	Sw. Kr. 165	Sw. Kr. 297	Sw. Kr. 0.80
● COPENHAGEN	Sw. Kr. 10	Sw. Kr. 17	Sw. Kr. 0.10
● HAMBURG	Sw. Kr. 75	Sw. Kr. 135	Sw. Kr. 0.75
● LONDON	Sw. Kr. 225	Sw. Kr. 405	Sw. Kr. 1
<b>STOCKHOLM</b>			
● AMSTERDAM	Sw. Kr. 255	Sw. Kr. 459	Sw. Kr. 1.50
● COPENHAGEN	Sw. Kr. 100	Sw. Kr. 180	Sw. Kr. 0.75
● HAMBURG	Sw. Kr. 165	Sw. Kr. 297	Sw. Kr. 1.25
● LONDON	Sw. Kr. 315	Sw. Kr. 567	Sw. Kr. 1.70

FOR BOOKING OFFICES SEE BACK COVER



WHEN TRAVELLING  
BY AIR SEA  
OR RAIL

*This is the Double Value  
Chewing Gum*



ALWAYS  
CARRY

**X-L CHEWING GUM**

IT KEEPS YOU FIT

ANGLO-AMERICAN CHEWING GUM LTD., LONDON S.E.1

BRITISH CONTINENTAL AIRWAYS

BRING YOU HOME SAFELY UNDER ALL  
WEATHER CONDITIONS THANKS TO THE

**LORENZ  
BLIND APPROACH EQUIPMENT**

*Supplied by  
Standard Radio*

STANDARD TELEPHONES & CABLES LTD.  
OAKLEIGH ROAD, NEW SOUTHGATE, LONDON, N.II

PERFECT PEACE AMID LONDON'S WHIRL

**RUTLAND COURT  
HOTEL**

63-4-5 LANCASTER GATE, HYDE PARK

One min. Kens. Gdns., Hyde Park. Tube or buses to everywhere. Perfect comfort and cuisine. Hot and cold running water, gas fire, and P.O. 'phone all bedrooms. Bridge and Billiard rooms. Lift. Inclusive Terms :— Single from 3½ gns. Dbl. 6½ gns. p.w. Bed & B'fst. 8s. 6d. No extras. Inspection invited. Ph. Padd. 9018 (2 lines).

LOCAL TIMES SHOWN THROUGHOUT

**LONDON - OSTEND - LE ZOUTE**

OPERATED BY BRITISH CONTINENTAL AIRWAYS

5 JUNE TO 6 SEPTEMBER INCLUSIVE

DAILY SERVICES

	Daily except Sundays	Satur- days only	Sun- days only
LONDON (Horseferry House) . dep.	15.40	17.10	08.40
AIRPORT OF LONDON (Croydon) dep.	16.30	18.00	09.30
OSTEND (Steene Airport) . . . . . arr.	17.40	—	10.40
OSTEND (Steene Airport) . . . . . dep.	17.50	—	10.50
LE ZOUTE (Airport). . . . . arr.	18.05	19.20	11.05
LE ZOUTE (4, Rue de la Brise) . arr.	18.20	19.35	11.20

**LE ZOUTE - OSTEND - LONDON**

	Daily except Sundays	Mon- days only	Sun- days only
LE ZOUTE (4, Rue de la Brise) . dep.	18.45	06.45	18.15
LE ZOUTE (Airport). . . . . dep.	19.00	07.00	18.30
OSTEND (Steene Airport) . . . . . arr.	19.15	—	18.45
OSTEND (Steene Airport) . . . . . dep.	19.30	—	19.00
AIRPORT OF LONDON (Croydon) arr.	20.45	08.30	20.15
LONDON (Horseferry House) . . . . . arr.	21.35	09.20	21.05

**FARES AND EXCESS BAGGAGE RATES**

	SINGLE FARE	RETURN FARE Valid 60 days	EXCESS BAGGAGE Per Kg.
LE ZOUTE			
● LONDON	B. Frs. 460	B. Frs. 782	B. Frs. 3.45
LONDON			
● LE ZOUTE	£3 5s. 0d.	£5 10s. 6d.	9d.
● OSTEND	£3 5s. 0d.	£5 10s. 6d.	9d.
OSTEND			
● LONDON	B. Frs. 460	B. Frs. 782	B. Frs. 3.45

**MARTELL'S**

COGNAC

**BRANDY**

IN HANDY FLASKS  
FOR AIR TRAVEL

FOR BOOKING OFFICES SEE BACK COVER





ESTABLISHED 1818

- AIRWORTHY is the aeroplane in which you travel.
- WEARWORTHY should be the clothes you wear.
- THE QUALITY of "Wearworthiness" comes of long experience, good materials, honest workmanship and sincere service.

LOUNGE SUITS • DRESS CLOTHES • SERVICE OUTFITS • TROPICAL CLOTHING

## SERVICE & CIVIL TAILORS

**MILLER, RAYNER & HAYSOM, LTD.**

110 FENCHURCH STREET, E.C.3.  
MONUMENT 2995

SOUTHAMPTON

LIVERPOOL

# MARCONI

## AIRCRAFT WIRELESS

IS INSTALLED ON  
BRITISH CONTINENTAL  
AIRWAYS

YOU KNOW WHERE YOU ARE WITH  
MARCONI

90% OF BRITISH COMMERCIAL  
WIRELESS EQUIPMENT

OVER 90% OF BRITISH CIVIL  
AERODROME WIRELESS  
EQUIPMENT IS

# MARCONI

MARCONI'S WIRELESS TELEGRAPH CO., LTD.  
ELECTRA HOUSE, VICTORIA EMBANKMENT, LONDON, W.C.2

## LIVERPOOL - DONCASTER - AMSTERDAM

OPERATED BY BRITISH CONTINENTAL AIRWAYS  
in conjunction with Royal Dutch Air Lines (K.L.M.)

1 JULY TO 3 OCTOBER INCLUSIVE

DAILY SERVICE, SUNDAYS EXCEPTED

LIVERPOOL (Adelphi Hotel)	dep.	11.00
LIVERPOOL (Speke Airport)	dep.	11.40
DONCASTER (Airport)	arr.	12.20
DONCASTER (Airport)	dep.	12.35
AMSTERDAM (Schiphol Airport)	arr.	15.30
AMSTERDAM (Leidscheplein)	arr.	16.05

N.B.—This service offers a connection with the K.L.M./A.B.A. service to Copenhagen and Malmö, leaving Amsterdam at 17.10.

## AMSTERDAM - DONCASTER - LIVERPOOL

AMSTERDAM (Leidscheplein)	dep.	15.45
AMSTERDAM (Schiphol Airport)	dep.	16.20
DONCASTER (Airport)	arr.	18.10
DONCASTER (Airport)	dep.	18.25
LIVERPOOL (Speke Airport)	arr.	19.10
LIVERPOOL (Adelphi Hotel)	arr.	19.50

N.B.—This service offers a connection at Amsterdam, for Doncaster and Liverpool, with the K.L.M./A.B.A. service from Stockholm, Malmö, and Copenhagen, arriving at 15.05.

## FARES AND EXCESS BAGGAGE RATES

	SINGLE FARE	RETURN FARE Valid 60 days	EXCESS BAGGAGE Per Kg.
AMSTERDAM			
● DONCASTER	Fls. 37.50	Fls. 67.50	Fls. 0.30
● LIVERPOOL	Fls. 45.00	Fls. 81.00	Fls. 0.35
DONCASTER			
● AMSTERDAM	£5 0 0	£9 0 0	9d.
● LIVERPOOL	£1 5s. 0d.	£2 5s. 0d.	2d.
LIVERPOOL			
● AMSTERDAM	£6 0s. 0d.	£10 16s. 0d.	11d.
● DONCASTER	£1 5s. 0d.	£2 5s. 0d.	2d.

# TITANINE

THE WORLD'S PREMIER

# DOPE

USED ON ALL AIRCRAFT EMPLOYED BY  
BRITISH CONTINENTAL AIRWAYS LTD.





# Lamberts, Parkers & Gaines Ltd.

(ESTABLISHED 1740)

CHARLES A. LABIN  
*Managing Director*

*Shippers of Quality Wines  
and Cognacs*

HEAD OFFICE :

49 OLD BOND STREET, LONDON, W.1.  
(Piccadilly end)

Phone : REGent 5047, 2768. Grams : OKAYLABIN, London

---

## “ ADEGA ” FINO SHERRY

A charming delicate wine of great distinction.

## “ QUEENS’ BLEND ” WHISKY

Extremely soft with delicate flavour.

## “ SATIS OPTIMUS ” PORT

A magnificent Tawny wine of great age.

## GRANDE CHAMPAGNE LIQUEUR COGNACS

up to 100 years old.

---

BRANCHES :

Chancery Buildings, Manor Street,  
HULL

Telephone : Hull 35938. Telegrams : VINUM, Hull.

Standard Buildings, City Square,  
LEEDS

Telephone : Leeds 21826. Telegrams : VINUM, Leeds

# BRITISH CONTINENTAL AIRWAYS

SPECIFY

||| **RUMBOLD** |||

SEATING  
AND  
COMPLETE  
CABIN FURNISHING  
IN ALL THEIR  
AIRCRAFT

We supply materials, labour and furniture for their aircraft, to suit their particular service and Air Ministry regulations, whilst endeavouring to give all passengers the maximum comfort, confidence and convenience.

*We invite criticisms and suggestions  
for any practical improvement*

All correspondence will be dealt with by the Managing Director

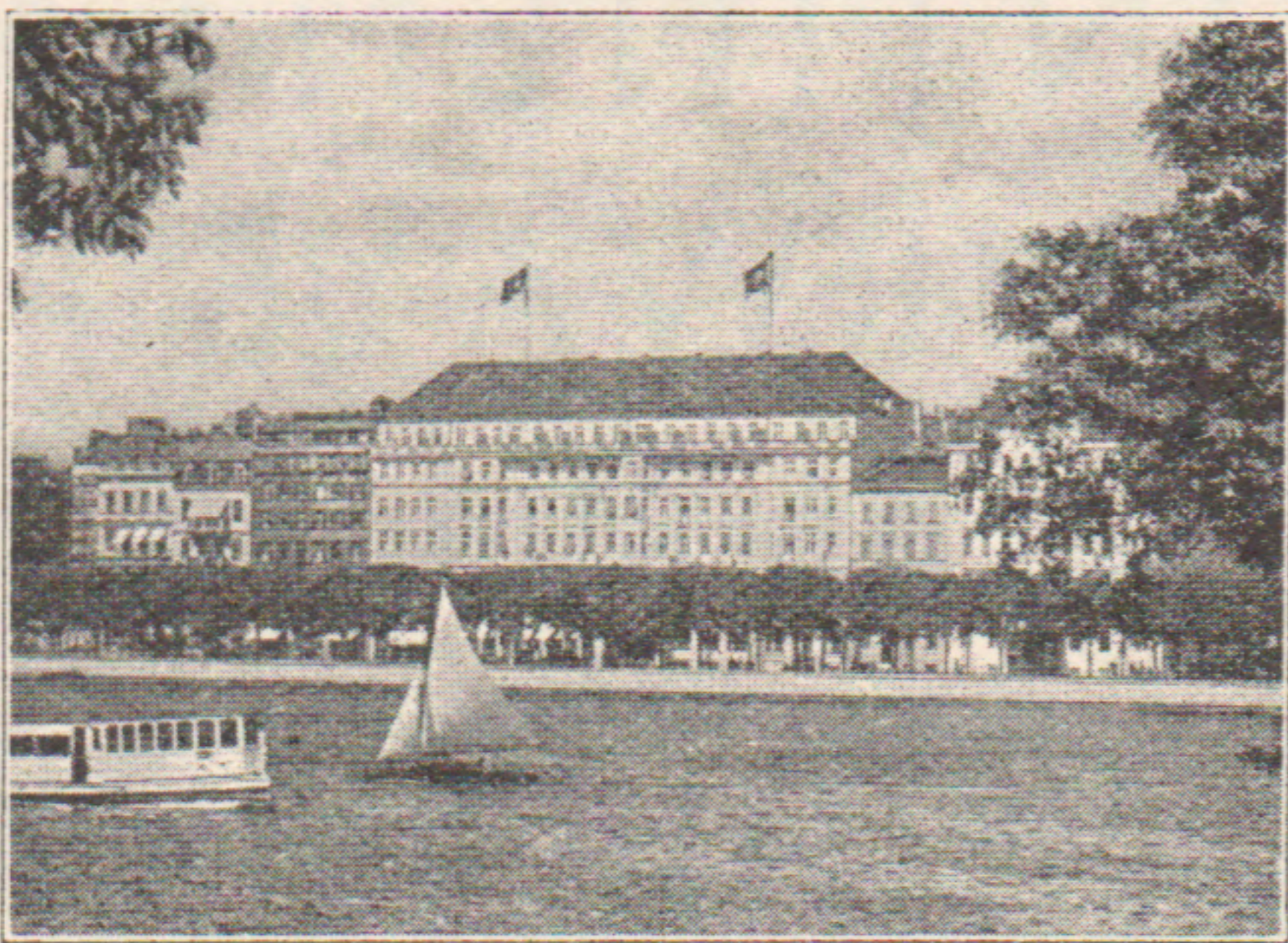
**L. A. RUMBOLD & CO. LTD.**  
**KINGSGATE PLACE, KILBURN, N.W.6**

TELEPHONE : MAIDA VALE 3772



# HAMBURG

## GERMANY



HOTEL "VIER JAHRESZEITEN"  
(HOTEL FOUR SEASONS)

THE MOST DISTINGUISHED HOTEL OF  
HAMBURG

210 BED AND SITTING-ROOMS

QUIETEST LOCALITY, FACING THE  
ALSTER LAKE AND IN THE CENTRE  
OF THE TOWN

TELEGRAPHIC ADDRESS: JAHRESZEITEN

# RHODOID

windows are fitted to all the  
machines on the

## BRITISH CONTINENTAL AIRWAYS' SERVICES

RHODOID is also supplied to  
a large number of other trades  
in a variety of colours, both  
translucent and opaque.

*For samples and particulars  
apply to*

## MAY & BAKER

LIMITED

RHODOID DEPT.

42/43 ST. PAUL'S CHURCHYARD  
LONDON, E.C.4

Telephone : CITY 6555    Telegrams : " Maybaka Cent London "

LOCAL TIMES SHOWN THROUGHOUT

## LONDON - AMSTERDAM - HAMBURG COPENHAGEN - MALMÖ - STOCKHOLM

Operated by A.B. Aerotransport in conjunction with K.L.M.  
and D.L.H.

### DAILY SERVICES

	20th April to 3rd October inclusive	1st July to 3rd October inclusive	20th April to 3rd October inclusive
LONDON (Horseferry House) . dep.	13.20	09.10	06.10
AIRPORT OF LONDON (Croydon) dep.	14.10	10.00	07.00
ROTTERDAM (Waalhaven Airport) arr.	15.15†	11.40	—
ROTTERDAM (Waalhaven Airport) dep.	15.25†	11.50	—
AMSTERDAM (Schiphol Airport) . arr.	15.50†	12.10	08.00†
AMSTERDAM (Schiphol Airport) . dep.	16.10†	12.35	08.30†
HAMBURG (Fuhlsbüttel Airport) . arr.	—	—	10.50
HAMBURG (Fuhlsbüttel Airport) . dep.	—	—	11.05
COPENHAGEN (Kastrup Airport) arr.	20.00	14.55	12.30
COPENHAGEN (Kastrup Airport) dep.	20.15	15.10	12.45
MALMÖ (Bulltofta Airport) . arr.	20.30	15.25	13.00
MALMÖ (Bulltofta Airport) . dep.	—	15.40	13.15‡
STOCKHOLM (Bromma Airport) . arr.	—	18.00	15.45‡
STOCKHOLM (Flugpavillon) . arr.	—	18.30	16.15‡

## STOCKHOLM - MALMÖ - COPENHAGEN HAMBURG - AMSTERDAM - LONDON

	20th April to 3rd October inclusive	1st July to 3rd October inclusive	20th April to 3rd October inclusive
STOCKHOLM (Flugpavillon) . dep.	—	08.15	12.20‡
STOCKHOLM (Bromma Airport) . dep.	—	08.45	12.50‡
MALMÖ (Bulltofta Airport) . arr.	—	11.10	15.35‡
MALMÖ (Bulltofta Airport) . dep.	08.30	11.25	15.50
COPENHAGEN (Kastrup Airport) arr.	08.45	11.40	16.05
COPENHAGEN (Kastrup Airport) dep.	09.00	11.55	16.20
HAMBURG (Fuhlsbüttel Airport) . arr.	—	—	17.45
HAMBURG (Fuhlsbüttel Airport) . dep.	—	—	18.00
AMSTERDAM (Schiphol Airport) . arr.	11.40†	15.05	19.10†
AMSTERDAM (Schiphol Airport) . dep.	12.00†	15.30	19.30†
ROTTERDAM (Waalhaven Airport) arr.	12.20†	—	—
ROTTERDAM (Waalhaven Airport) dep.	12.30†	—	—
AIRPORT OF LONDON (Croydon) arr.	14.35	17.10	22.00
LONDON (Horseferry House) . arr.	15.25	18.00	22.50

† Add one hour after 15th May owing to Netherlands summer time.

‡ Operates from 1st July.

N.B.—For fares see page 11.

FOR BOOKING OFFICES SEE BACK COVER



# “RAYNOIL” MAPS, LTD.

“RaynOil” flying, route and direction finding maps and charts are used exclusively by the most famous air lines in the world.

“RaynOil” are the makers of nearly one quarter of a million flying maps since 1930

**6 Gordon Place, London, W.C.1**  
Museum 4126

## AT THE BAYNARD PRESS

### BAYNARD SERVICE

INCLUDES

**COPY** from Literary Department

**PHOTOGRAPHS** from the Baynard Press Photographic Studio

**LAYOUT** from Typography Dept.

**DESIGN** from Baynard Studios

**PRINTING** IN MOST PROCESSES AT THE BAYNARD PRESS



CHRYSSELL ROAD, LONDON, S.W.9  
TELEPHONE: RELIANCE 3094 (4 LINES)

BRITISH CONTINENTAL AIRWAYS



USE  
**AEROSHELL**  
LUBRICATING OIL

**EXCLUSIVELY**