



AIR CALIFORNIA

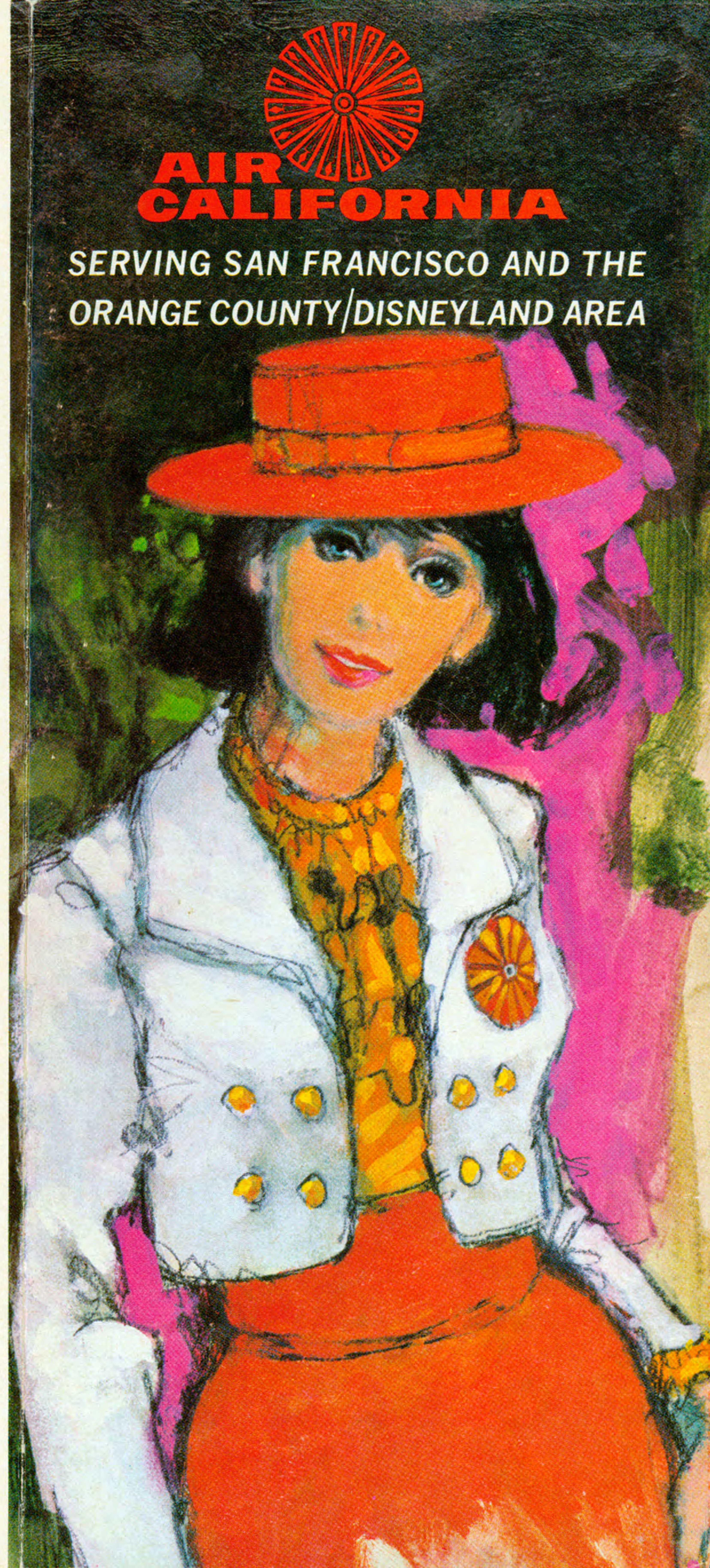
SERVING SAN FRANCISCO AND THE
ORANGE COUNTY/DISNEYLAND AREA





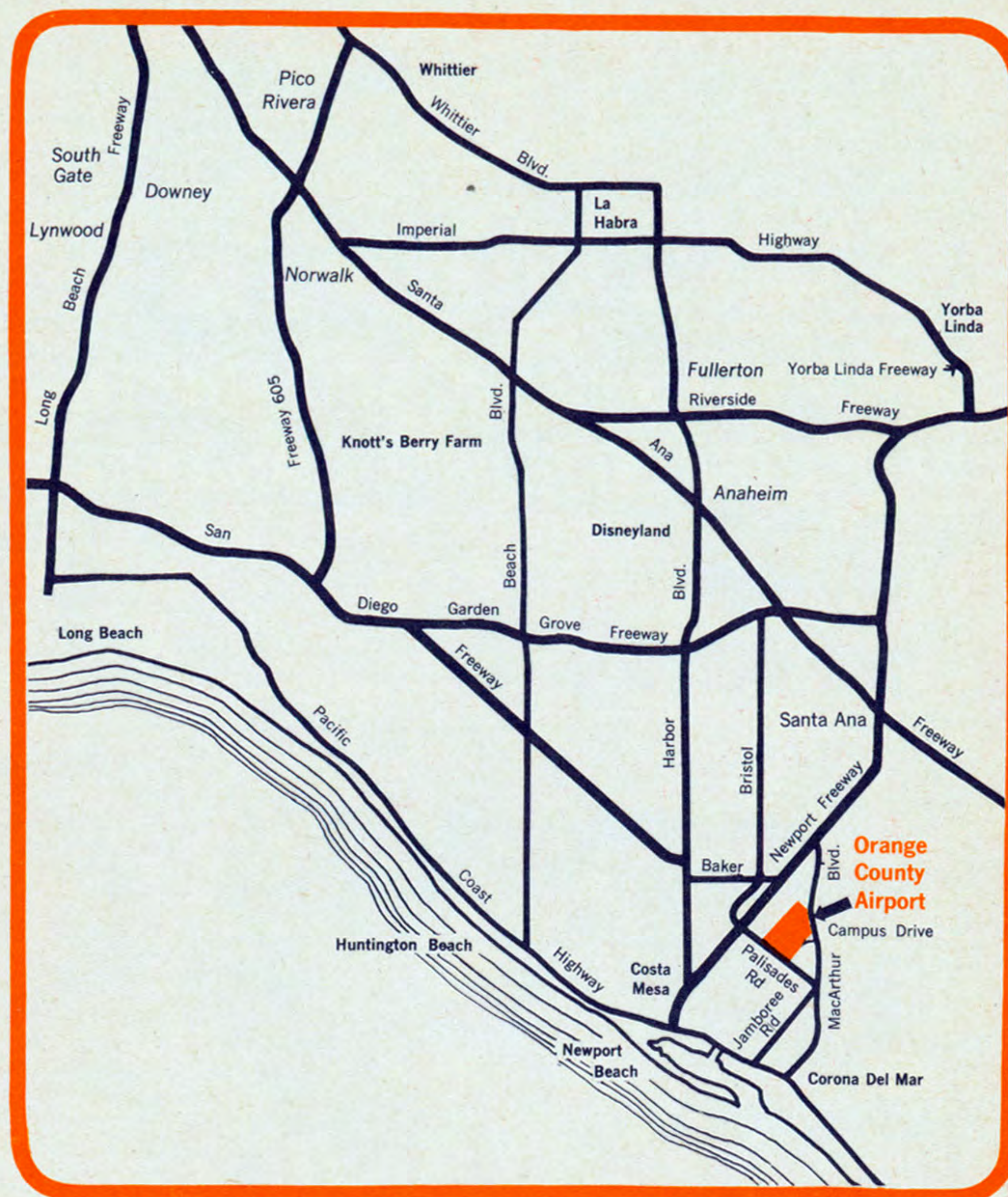
Aboard Air California Electra Jets, it is but a one-hour non-stop flight between Orange County, the home of Disneyland, and San Francisco International Airport.

ORANGE COUNTY – THE HEART OF SOUTHERN CALIFORNIA



AIR CALIFORNIA

SERVING SAN FRANCISCO AND THE ORANGE COUNTY/DISNEYLAND AREA




AIR CALIFORNIA

110 ELECTRA JET FLIGHTS WEEKLY BETWEEN SAN FRANCISCO AND ORANGE COUNTY

San Francisco and the Bay Area can now easily be added to your Southern California visit. Or, just as easily, plan to fly to the Disneyland area for a day while staying in San Francisco. With Air California's non-stop Electra Jet service, the two most exciting vacation lands in the state are just one hour apart. For the businessman flying from Orange County to San Francisco, Air California means that convenient, scheduled flights are available without a long freeway drive. And parking at the new Orange County Airport is free.

Orange County is the heart of Southern California, and home of many of its most famous attractions, including: **DISNEYLAND**, the magic kingdom, a fantasy-filled adventure for both children and adults; **KNOTT'S BERRY FARM**, where you can visit a very much alive ghost town, and spend the entire day in a charming America of yesteryear; **ANGELS BASEBALL**, during the season the California Angels play host to their American League rivals in the new \$20 million Anaheim Stadium; **MOVIELAND WAX MUSEUM**, where the stars of past and present come to life in wax. Just a one hour drive from Disneyland is **MARINELAND OF THE PACIFIC**, with Bubbles the whale and hundreds of other attractions. A few minutes drive from the Orange County Airport is **NEWPORT BEACH**, pleasure boat capital of the world, and one of the finest resort cities in the country; **BALBOA ISLAND**, a vacation paradise; **MISSION SAN JUAN CAPISTRANO**, where the swallows return every spring. All are just an hour away from the cities by the bay aboard **AIR CALIFORNIA**.

Call Your Travel Agent

Orange County Airport, one of the most modern regional airports in the United States, is just minutes away from many of Southern California's most famous attractions. With non-stop Electra Jet flights between the Orange County/Disneyland area and San Francisco, the long drives on the freeways are a thing of the past.

DRIVING TIME		
	From Orange County Airport	From Los Angeles International Airport
DISNEYLAND (Anaheim)	18 minutes	45 minutes
KNOTT'S BERRY FARM (Buena Park)	21 minutes	42 minutes
NEWPORT BEACH	10 minutes	50 minutes
LAGUNA BEACH	20 minutes	60 minutes
FULLERTON	25 minutes	40 minutes
SANTA ANA	5 minutes	50 minutes
HUNTINGTON BEACH	20 minutes	40 minutes
GARDEN GROVE	20 minutes	40 minutes
LONG BEACH	30 minutes	30 minutes

AIR CALIFORNIA
RESERVATIONS:
San Francisco 433-2660
Orange County 540-4550

FLIGHT SCHEDULE

Effective April 1, 1967

Flight Number	Orange County to San Francisco Leave	San Francisco Arrive	Remarks
101	7:00 a.m.	8:15 a.m.	Except Sat. & Sun.
103	7:45 a.m.	9:00 a.m.	Except Sunday
105	10:30 a.m.	11:45 a.m.	
121	12:15 p.m.	1:30 p.m.	
125	2:00 p.m.	3:15 p.m.	Fri. & Sun. Only
127	3:45 p.m.	5:00 p.m.	Except Saturday
131	5:30 p.m.	6:45 p.m.	
141	7:30 p.m.	8:45 p.m.	
151	9:15 p.m.	10:30 p.m.	Friday Only
Flight Number	San Francisco to Orange County Leave	Orange County Arrive	Remarks
212	8:45 a.m.	10:00 a.m.	Except Sunday
214	9:45 a.m.	11:00 a.m.	
222	12:15 p.m.	1:30 p.m.	
224	2:00 p.m.	3:15 p.m.	Fri. & Sun. Only
226	3:45 p.m.	5:00 p.m.	Except Saturday
232	5:30 p.m.	6:45 p.m.	
242	7:30 p.m.	8:45 p.m.	
252	9:15 p.m.	10:30 p.m.	Except Saturday

FOR RESERVATIONS

SAN FRANCISCO (415) 433-2660	ORANGE COUNTY (714) 540-4550
--	--

FAMILY FARES. One child under two years old not occupying a seat may fly free when accompanied by a passenger twelve years old or over. All children under twelve may fly for one-half fare.

MILITARY FARES. Military personnel on leave may travel for one-half fare on a space available basis. Consult your Air California agent for details.

CREDIT CARDS. Air California honors American Express, BankAmericard, Carte Blanche, and Diners' Club credit cards.

BAGGAGE ALLOWANCE. Two large pieces of luggage (subject to certain size restrictions), plus small pieces which can be stowed under the seat may be carried free. In addition, passengers on the same flight may pool baggage. Usually, the free baggage allowance covers all the luggage you will need whether you return in a week or a month.

GROUP SALES AND AIR CARGO. Air California maintains sales offices in both Orange County and San Francisco with corporate offices in Orange County. For further information call or write:

AIR CALIFORNIA 4400 Campus Drive Newport Beach, California (714) 540-3220	AIR CALIFORNIA Suite 1320 44 Montgomery Street San Francisco, California (415) 433-3750
---	--

14⁸⁵

ONE-WAY PLUS TAX