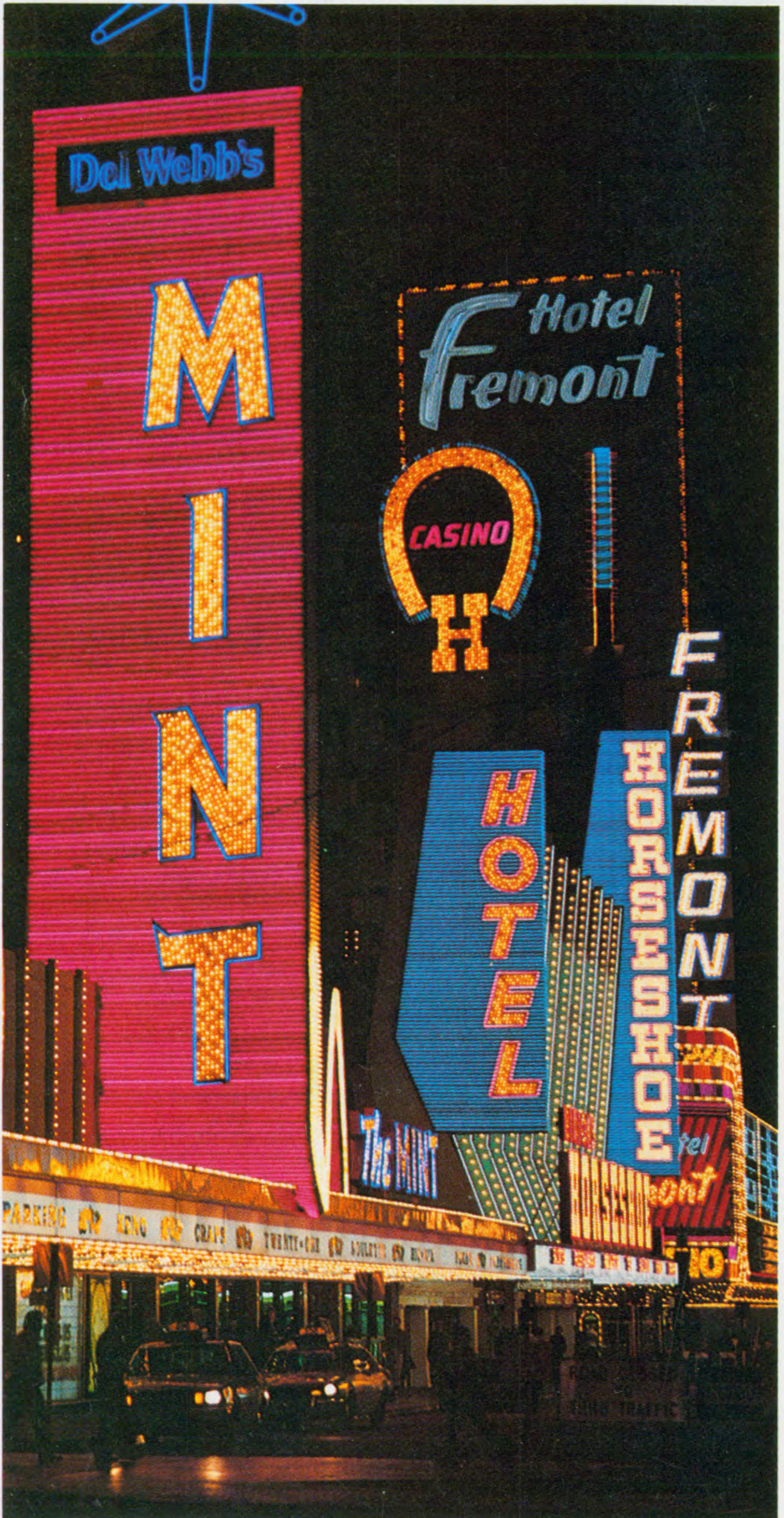

AIR CALIFORNIA

TIMETABLE

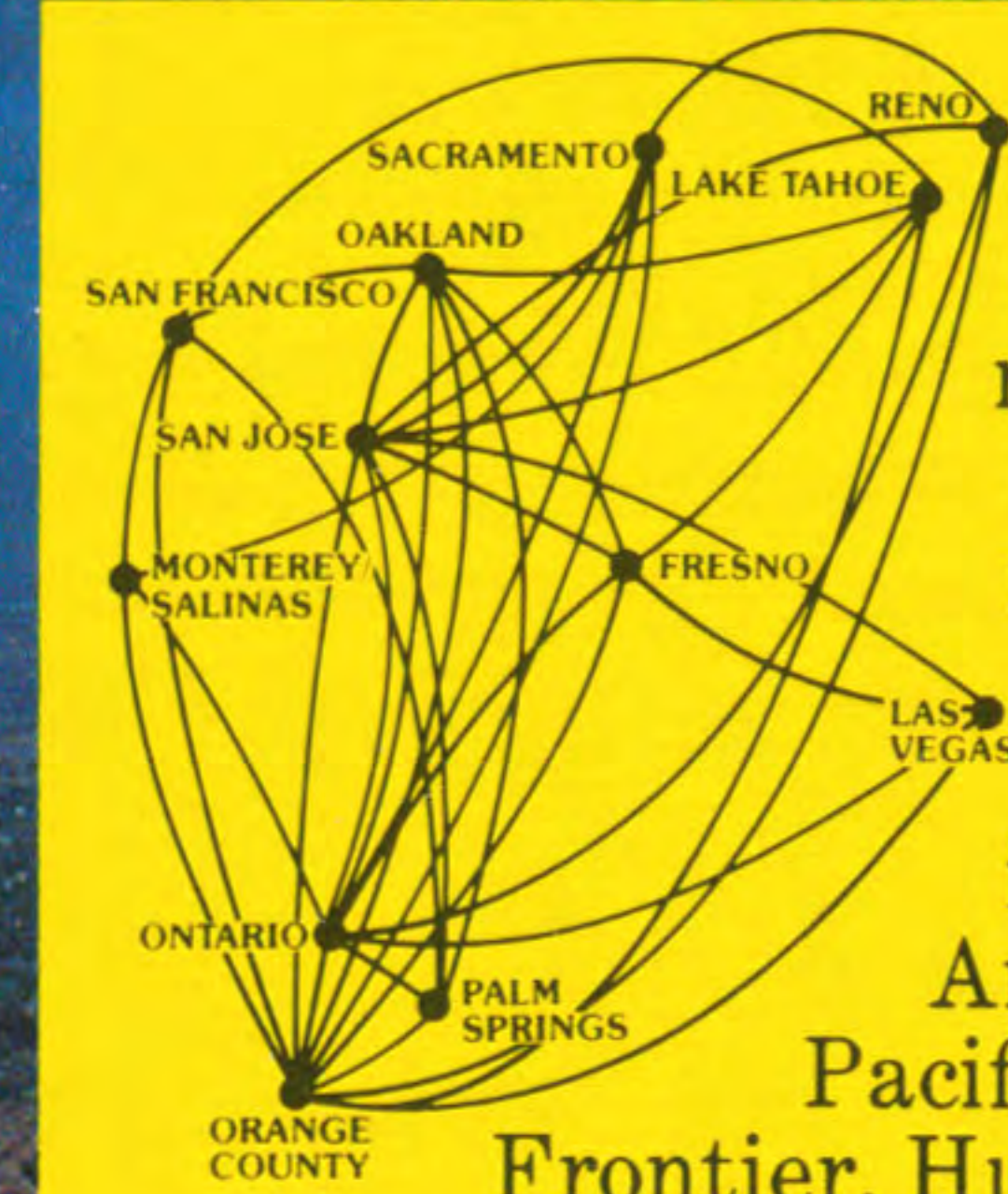
Effective May 1, 1979



SERVING CALIFORNIA AND NEVADA



**Good connections
in twelve directions.**



Air California flights to popular California and Nevada destinations now connect with major airlines, to serve cities all over the country. All the way from flight reservations to automatic luggage transfers. Air California is a partner in travel with Alaska, American, Braniff, Canadian Pacific, Continental, Delta, Eastern, Frontier, Hughes Airwest, National, Northwest, TWA, United and Western.

AIR CALIFORNIA
We make it easy to fly.

AIR CALIFORNIA

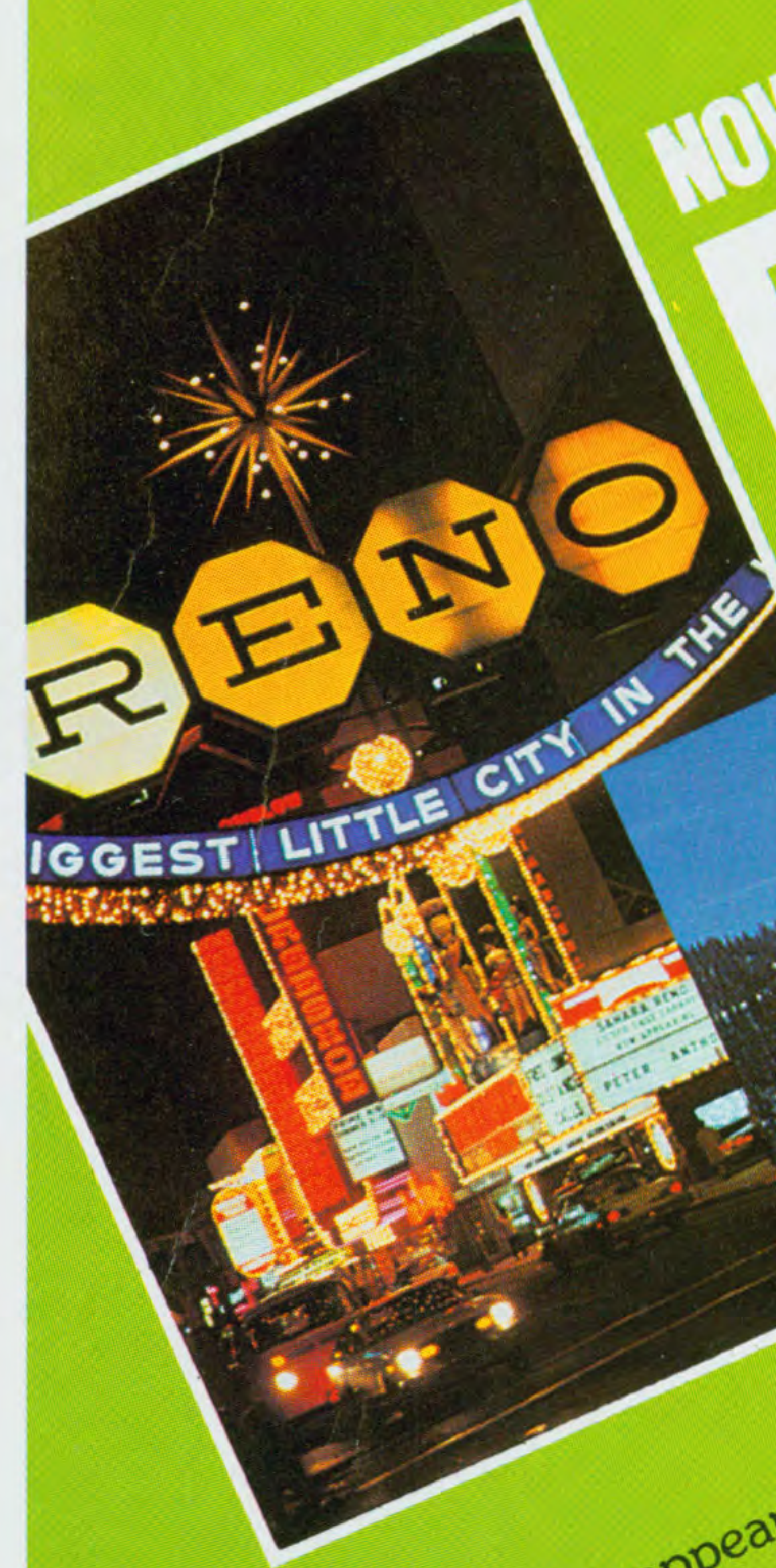
TIMETABLE
Effective May 1, 1979



SERVING CALIFORNIA AND NEVADA

Air California
3636 Birch Street
Newport Beach, CA 92660

**NOW APPEARING IN
RENO, LAS VEGAS,
LAKE TAHOE**



Air California is now appearing in Las Vegas, Reno and Lake Tahoe. With convenient flights and low fares. In fact, Air California is the only airline with regularly scheduled flights to all three great cities. So take off for nightlife, shows with big name stars, and exciting casinos. The best of the great outdoors and the great indoors. Call your Travel Agent or Air California. Be sure to ask about our low Vacation and Economy Fares too.

AIR CALIFORNIA
We make it easy to fly.

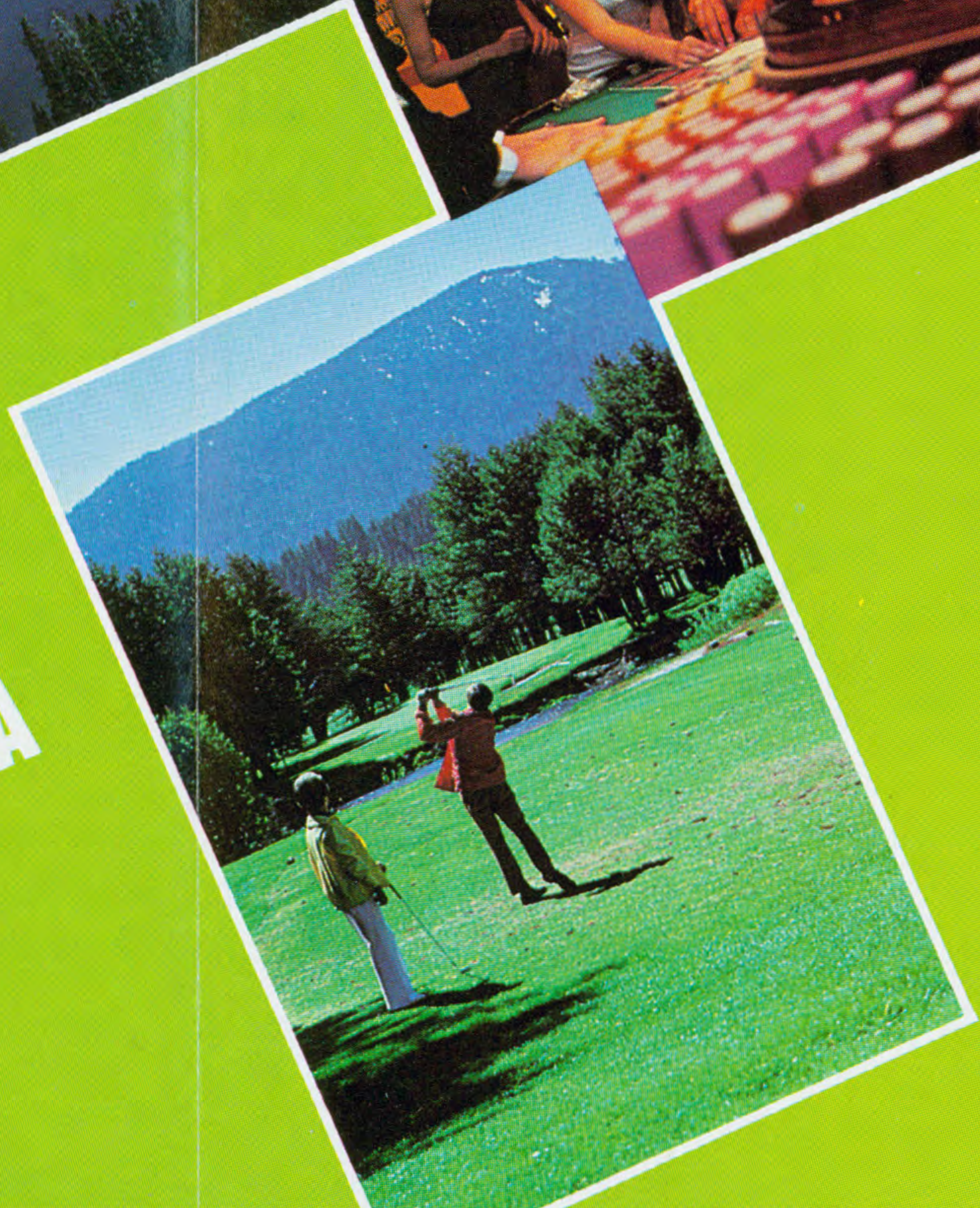
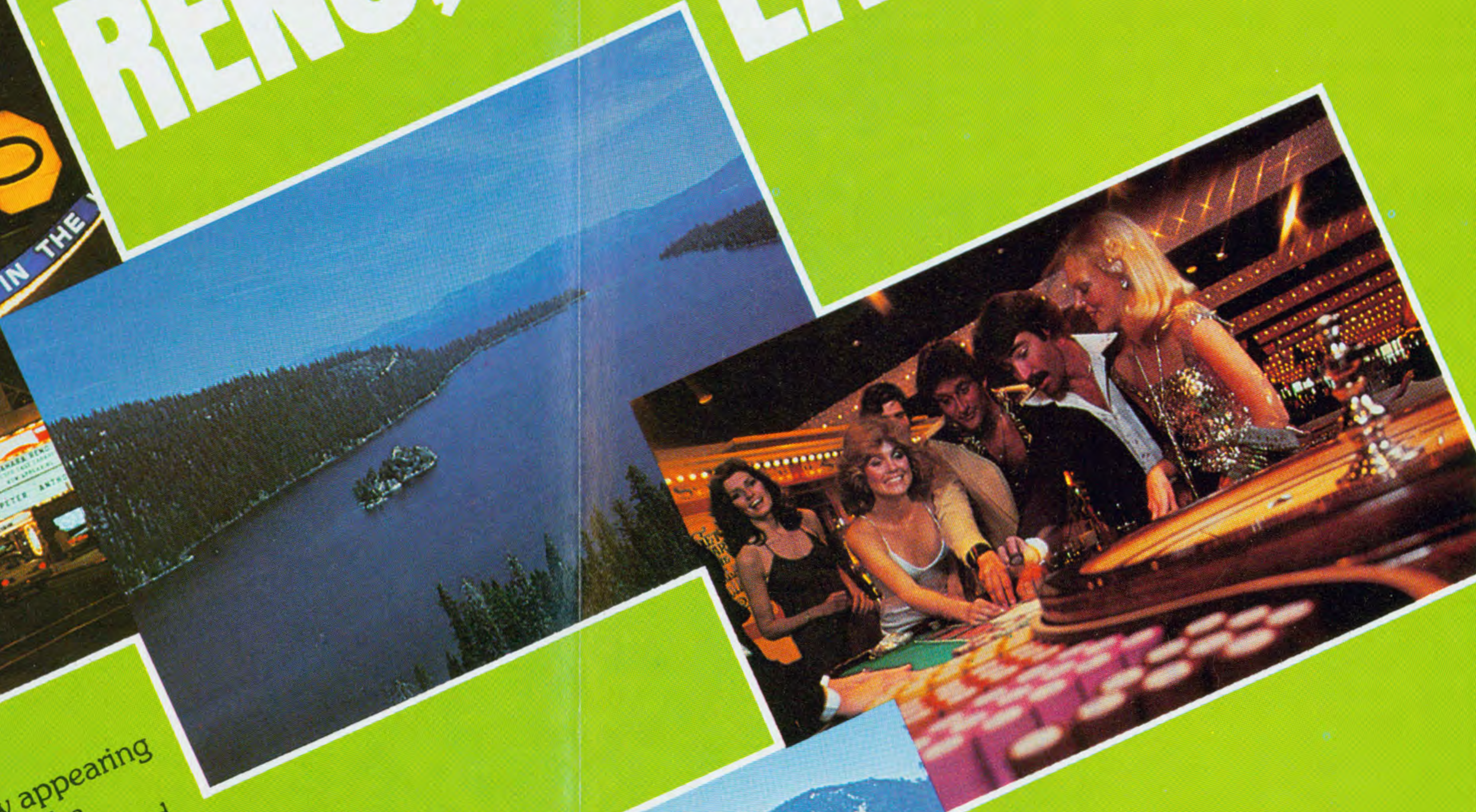




Table with columns: Leave, Arrive, Freq., Flight No., Via/Stops, Remarks. Includes 'FRESNO' and reservation information: (209) 251-5545, (209) 252-7378.

NEW NONSTOP SERVICE!
TO LAS VEGAS
SERVICE BEGINS JUNE 1

Table for Lake Tahoe routes: To Lake Tahoe and From Lake Tahoe. Includes flight times and frequencies.

Table for Las Vegas routes: To Las Vegas and From Las Vegas. Includes flight times and frequencies.

Table for Oakland routes: To Oakland and From Oakland. Includes flight times and frequencies.

Table for Ontario routes: To Ontario and From Ontario. Includes flight times and frequencies.

Table for Orange County routes: To Orange County and From Orange County. Includes flight times and frequencies.

Table for Palm Springs routes: To Palm Springs and From Palm Springs. Includes flight times and frequencies.

Table for Sacramento routes: To Sacramento and From Sacramento. Includes flight times and frequencies.

Table for San Francisco routes: To San Francisco and From San Francisco. Includes flight times and frequencies.

Table with columns: Leave, Arrive, Freq., Flight No., Via/Stops, Remarks. Includes 'FRESNO (Cont'd)'.

Table for San Jose routes: To San Jose and From San Jose. Includes flight times and frequencies.

Table for Lake Tahoe routes: To Lake Tahoe and From Lake Tahoe. Includes flight times and frequencies.

INCREASED SERVICE!
TO SAN FRANCISCO

Table for Monterey routes: To Monterey and From Monterey. Includes flight times and frequencies.

Table for Oakland routes: To Oakland and From Oakland. Includes flight times and frequencies.

Table for Ontario routes: To Ontario and From Ontario. Includes flight times and frequencies.

Table for Orange County routes: To Orange County and From Orange County. Includes flight times and frequencies.

Table for Palm Springs routes: To Palm Springs and From Palm Springs. Includes flight times and frequencies.

Table for Sacramento routes: To Sacramento and From Sacramento. Includes flight times and frequencies.

Table for San Francisco routes: To San Francisco and From San Francisco. Includes flight times and frequencies.



Table with columns: Leave, Arrive, Freq., Flight No., Via/Stops, Remarks. Includes 'LAS VEGAS' and reservation information: (702) 382-2911, (702) 739-5700.

NEW NONSTOP SERVICE!
TO ORANGE COUNTY
TO ONTARIO AND SAN JOSE
BEGINNING JUNE 1

Table for Oakland routes: To Oakland and From Oakland. Includes flight times and frequencies.

Table for Ontario routes: To Ontario and From Ontario. Includes flight times and frequencies.

Table for Orange County routes: To Orange County and From Orange County. Includes flight times and frequencies.

Table for Sacramento routes: To Sacramento and From Sacramento. Includes flight times and frequencies.

Table for San Francisco routes: To San Francisco and From San Francisco. Includes flight times and frequencies.

Table for San Jose routes: To San Jose and From San Jose. Includes flight times and frequencies.

Table for San Jose routes: To San Jose and From San Jose. Includes flight times and frequencies.

Table with columns: Leave, Arrive, Freq., Flight No., Via/Stops, Remarks. Includes 'MONTEREY' and reservation information: (408) 373-6161, (408) 372-3090.

NEW SERVICE!
TO RENO

Table for Ontario routes: To Ontario and From Ontario. Includes flight times and frequencies.

Table for Orange County routes: To Orange County and From Orange County. Includes flight times and frequencies.

Table for Palm Springs routes: To Palm Springs and From Palm Springs. Includes flight times and frequencies.

Table for Reno routes: To Reno and From Reno. Includes flight times and frequencies.

Table for Sacramento routes: To Sacramento and From Sacramento. Includes flight times and frequencies.

Table for San Francisco routes: To San Francisco and From San Francisco. Includes flight times and frequencies.

Table for Oakland routes: To Oakland and From Oakland. Includes flight times and frequencies.

NEW NONSTOP SERVICE!
TO ONTARIO
SERVICE BEGINS JUNE 1

Table for Ontario routes: To Ontario and From Ontario. Includes flight times and frequencies.

ANNOUNCING FIVE GREAT TAKE OFFS.

TAKE OFF 35%

Plan ahead and save. Fly for 35% off our regular fare when reservations are confirmed and tickets purchased 7 days in advance. Good on every flight with limited number of seats.

Ask for our ECONOMY FARE.

TAKE OFF 20-55%

Families or friends (3 to 9 people) traveling together fly for less. We'll take 20% off our regular fare for adults and 55% off for children, when reservations are confirmed and tickets purchased 7 days in advance. Good on every flight and at least one adult must be in group.

Ask for our VACATION FARE.

TAKE OFF 50%

Children fly for half fare on every flight. They must be from 2 to 11 years old and accompanied by an adult.

Ask for our CHILDREN'S FARE.

TAKE OFF 20%

Buy a Sunjet Tour package and get 20% off our regular roundtrip fare. Reservations must be confirmed and tickets purchased 7 days in advance. Good on every flight.

Ask for our SUNJET TOUR FARE.

TAKE OFF 15%

Ski clubs, church groups, sports teams. Any group of ten or more can take off 15% when reservations are confirmed and tickets purchased 7 days in advance. Good on every flight.

Ask for our GROUP FARE.

Call your Travel Agent or Air California for reservations and complete discount fare information.

AIR CALIFORNIA FARES

One way including tax.

	STANDARD FARES	ECONOMY FARES
FRESNO TO:		
Lake Tahoe	\$22.00	\$14.00
Las Vegas	35.00	23.00
Oakland	22.00	14.00
Ontario	29.00	19.00
Orange County	29.00	19.00
Palm Springs	36.00	23.00
Sacramento	27.00	18.00
San Jose	22.00	14.00
LAKE TAHOE TO:		
Monterey	34.00	22.00
Oakland	24.00	16.00
Ontario	43.00	28.00
Orange County	43.00	28.00
Palm Springs	47.00	31.00
San Francisco	24.00	16.00
San Jose	24.00	16.00
LAS VEGAS TO:		
Oakland	43.00	28.00
Ontario	31.00	20.00
Orange County	31.00	20.00
Sacramento	43.00	28.00
San Francisco	43.00	28.00
San Jose	43.00	28.00
MONTEREY/SALINAS TO:		
Ontario	34.00	22.00
Orange County	36.00	23.00
Palm Springs	41.00	27.00
Reno	34.00	22.00
Sacramento	24.00	16.00
San Francisco	16.00	10.00
OAKLAND TO:		
Ontario	34.00	22.00
Orange County	36.00	23.00
Palm Springs	41.00	27.00
San Jose	11.00	7.00
ONTARIO TO:		
Palm Springs	17.00	11.00
Reno	46.00	30.00
Sacramento	35.00	23.00
San Jose	34.00	22.00
ORANGE COUNTY TO:		
Palm Springs	17.00	11.00
Reno	46.00	30.00
Sacramento	37.00	24.00
San Francisco	36.00	23.00
San Jose	36.00	23.00
PALM SPRINGS TO:		
Reno	46.00	30.00
Sacramento	42.00	27.00
San Francisco	41.00	27.00
San Jose	41.00	27.00
RENO TO:		
Sacramento	21.00	14.00
San Jose	26.00	17.00
SACRAMENTO TO:		
San Jose	16.00	10.00

DON'T BE A NO-SHOW!

The no-show factor approaches 25% on peak period flights. Please cancel your reservations if your plans change, or you are unable to use them for any reason. There are many customers desiring confirmed seats that cannot be accommodated because of reserved space that will not be used.

GENERAL INFORMATION

AIRCRAFT

Flights 1-99: Lockheed L-188 Electra Jets.
Flights 100-900: Boeing 737 SunJets

ALCOHOLIC BEVERAGES

Federal Aviation Administration regulations provide that no persons may drink alcoholic beverages aboard an aircraft unless they have been served by the airline, and no such beverage may be served to any person who appears intoxicated.

BAGGAGE

Baggage Liability—Passenger name identification must be placed on the outside of all checked baggage. Baggage identification labels are available from Air California at no cost. Liability for baggage between points in the U.S. will not exceed \$750.00 unless you declare a higher valuation and pay an extra charge. Excess valuation cannot be declared for certain checked valuable items such as jewelry, negotiable instruments, currency and antiques.

Free Baggage Allowance—(Per Passenger) 1 piece of baggage with linear dimensions (length + height + width) not exceeding 62 inches, plus 1 piece of baggage with linear dimensions not exceeding 55 inches. One or more additional pieces, totaling no more than 45 inches may be carried on board provided it fits beneath the seat; approximate dimensions not to exceed 10"x16"x19". In addition to size, no single piece can weigh more than 10 pounds.

Excess Baggage—A standard fee of \$6.00 will be charged for each of the first four pieces, and \$24.00 for each additional piece. The items listed below are subject to the special charges regardless of the total baggage carried.

Bicycles—\$12.00 Scuba Gear—\$6.00
Surfboards—\$12.00 Household Pets—\$12.00

CHARTER SERVICE

For information on Charter Service within the State of California, please call your local Air California reservation number or (714) 752-7000.

CHECK-IN TIMES

Make sure that tickets, baggage and other details are in order before checking in. Check in at least 30 minutes before departure (45 minutes if you do not have your ticket). If you check in at the gate of departure less than 10 minutes prior to departure, your space is subject to cancellation and use by non-confirmed passengers.

CLAIMS

Damage to or loss of baggage must be reported to Air California immediately upon termination of your flight.

CREDIT CARDS

Air California honors American Express, BankAmericard, Barclay Card, ChargeX, Carte Blanche, Diners Club, First National Bank of San Jose, Master Charge, UATP and VISA credit cards.

DENIED BOARDING COMPENSATION

Compensation will be paid if the flight for which you have a confirmed reservation is unable to accommodate you and departs without you. Subject to the exceptions prescribed in the tariff on file, compensation will be in amounts from \$37.50 to \$200.00 depending upon the ticket value.

FARES

Fares listed in this timetable are for information only and are subject to change without notice. Due to routing circuitry, fares for specific itineraries may be higher than those listed.

FARES: S—Standard Class — K—Economy Class

RESERVATIONS

Advance reservations are desirable, and may be obtained for any flight by contacting Air California or your Travel Agent.

RESPONSIBILITY

Air California will not be responsible for damages resulting from the failure to depart or arrive at times stated in this timetable nor for errors herein, nor for failure to make connections with flights of other airlines or of this company, nor for cancellation beyond our control when such actions are deemed advisable. The Company has the right to cancel reservations before passage or enroute whenever such action is deemed advisable or necessary. Schedules and fares are subject to change without notice.

RESTRICTED ARTICLES

Corrosive liquids, flammable substances, such as matches and lighter fluid, compressed gas or any hazardous material MAY NOT be carried in baggage.

RESERVATIONS & INFORMATION

Please call your Travel Agent or the Air California number nearest you.
Outside California call (800) 854-3511

Colton	(714) 825-6900	Palo Alto	(415) 591-9611
Downey	(213) 924-3313	Reno	(702) 323-6060
El Monte	(213) 444-4501	Riverside/San Bernardino	(714) 825-6900
Fremont	(415) 862-2441	Sacramento	(916) 446-6161
Fresno	(209) 251-5545	Salinas	(408) 424-5737
Laguna	(714) 496-6000	San Clemente	(714) 496-6000
Lake Tahoe	(702) 588-5471	San Francisco	(415) 433-2660
Las Vegas	(702) 382-2911	San Jose	(408) 286-7870
Livermore	(415) 862-2441	San Mateo	(415) 591-9611
Long Beach	(213) 924-3313	San Rafael	(415) 924-1200
Los Angeles	(213) 627-5401	Santa Ana	(714) 752-1000
Monterey	(408) 373-6161	Santa Cruz	(408) 688-7000
Oakland	(415) 562-8200	Santa Rosa	(707) 795-0031
Ontario	(714) 983-2743	Vista	(714) 758-3000
Orange County	(714) 752-1000	Walnut Creek	(415) 938-3800
Palm Springs	(714) 327-8556		

Add My Name To The Timetable Mailing List

Air California maintains an extensive list of individuals and corporations receiving copies of our system timetables. If you wish to be included on this mailing list to receive your copy or copies, FREE of charge, just complete the following:

MAIL TO:

Company Name _____

Individual's Name _____

Street Address _____

City/State/Zip _____

Quantity Desired _____

Please include Air California Sunjet Tour Brochures