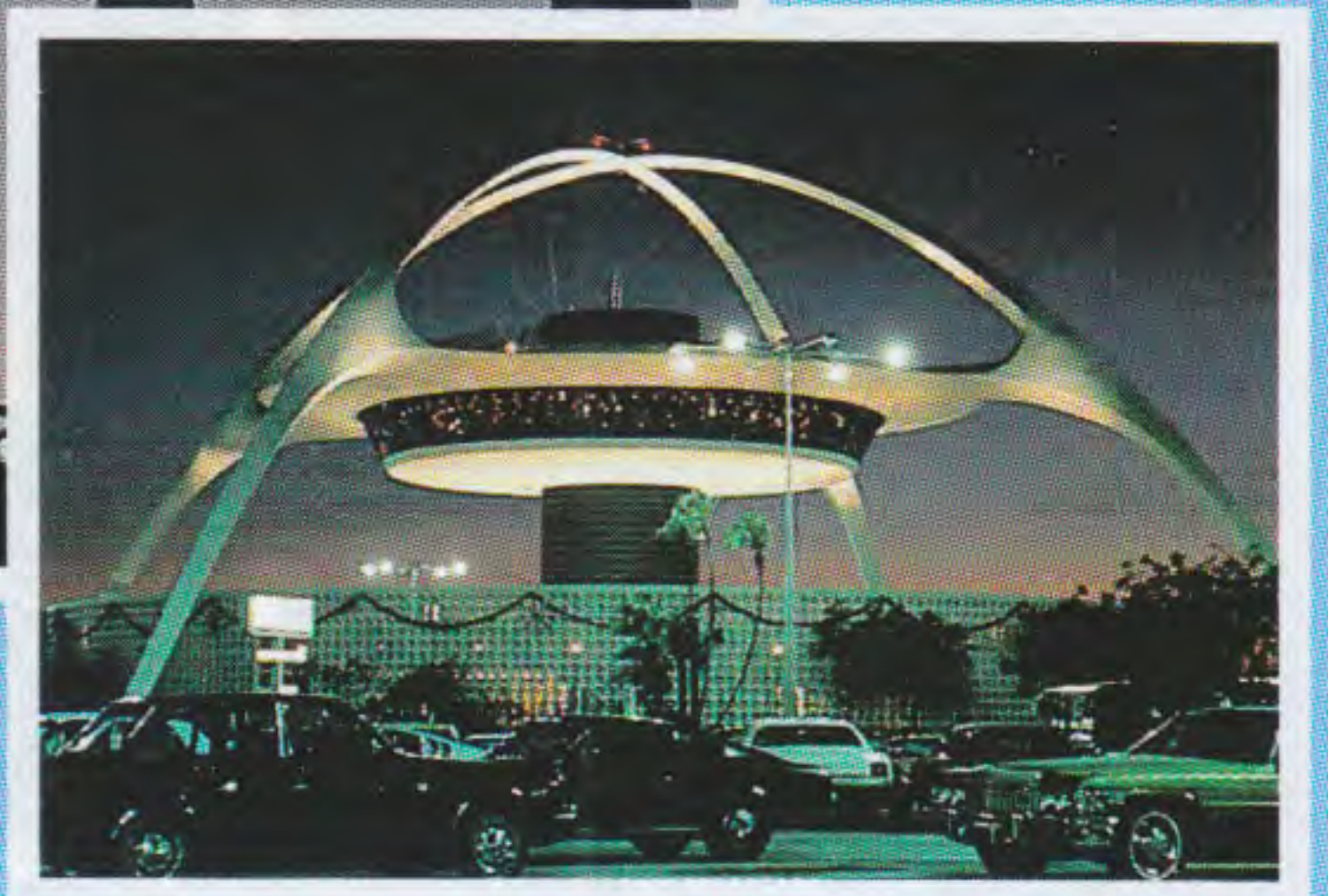
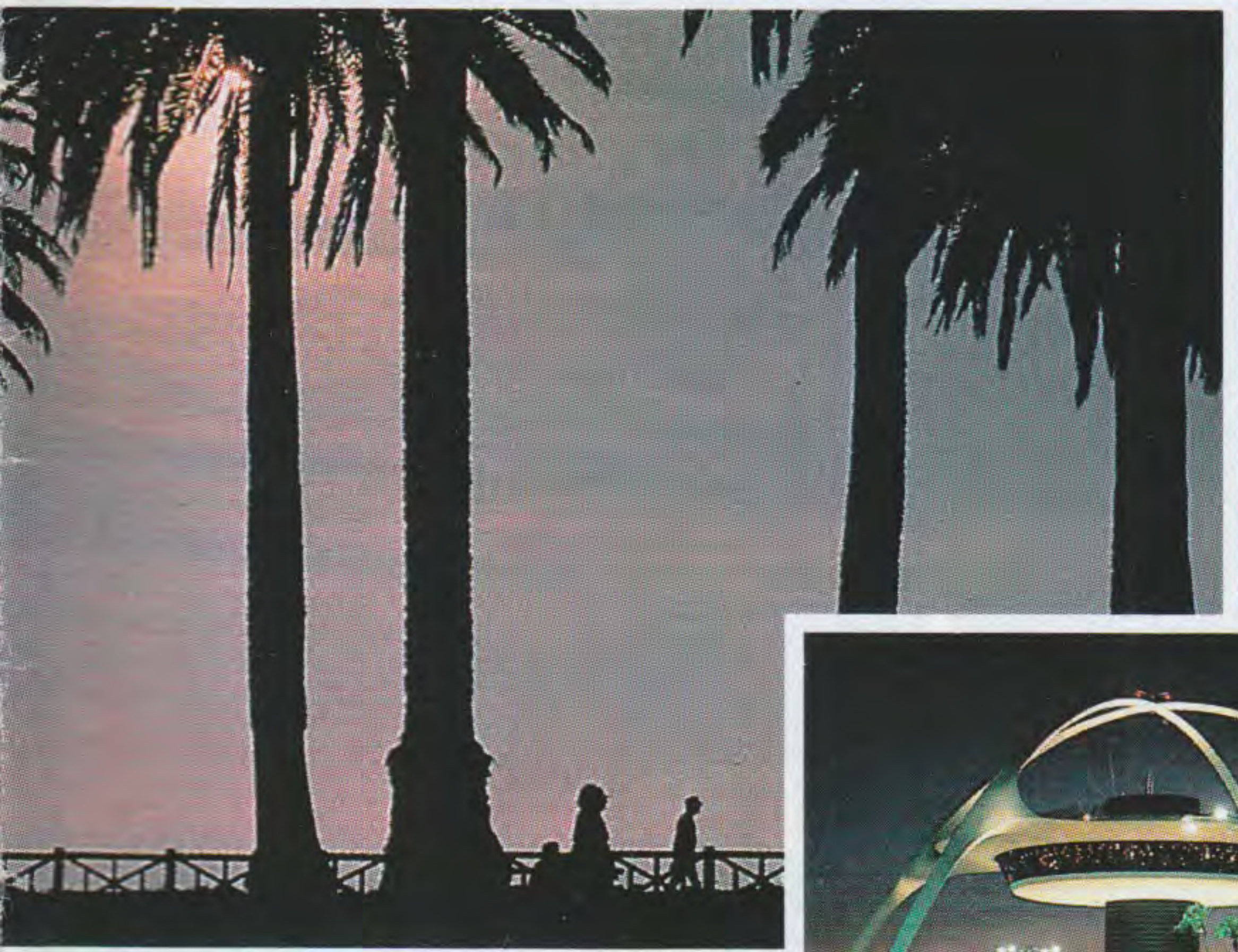


AIRCAL

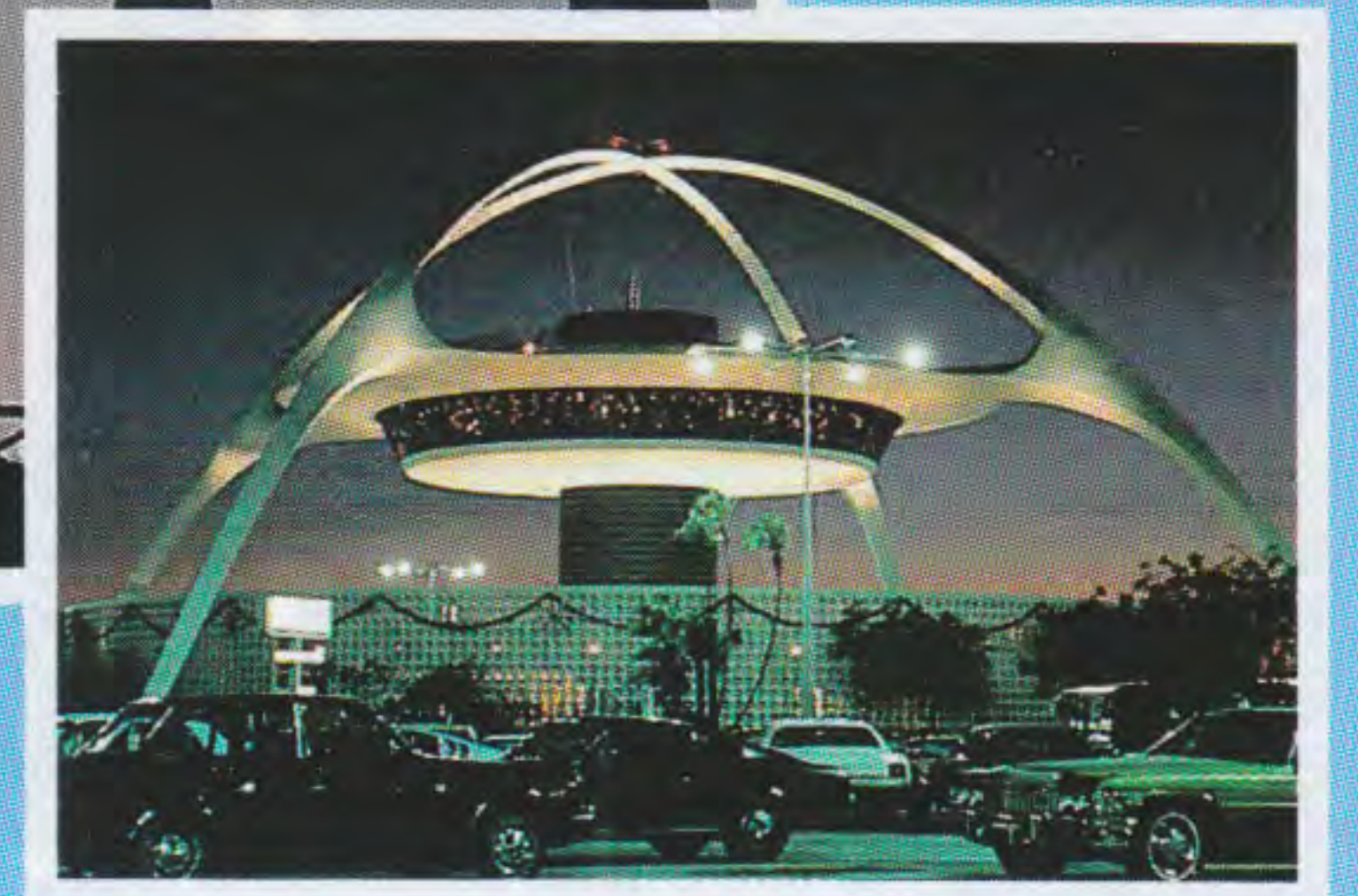
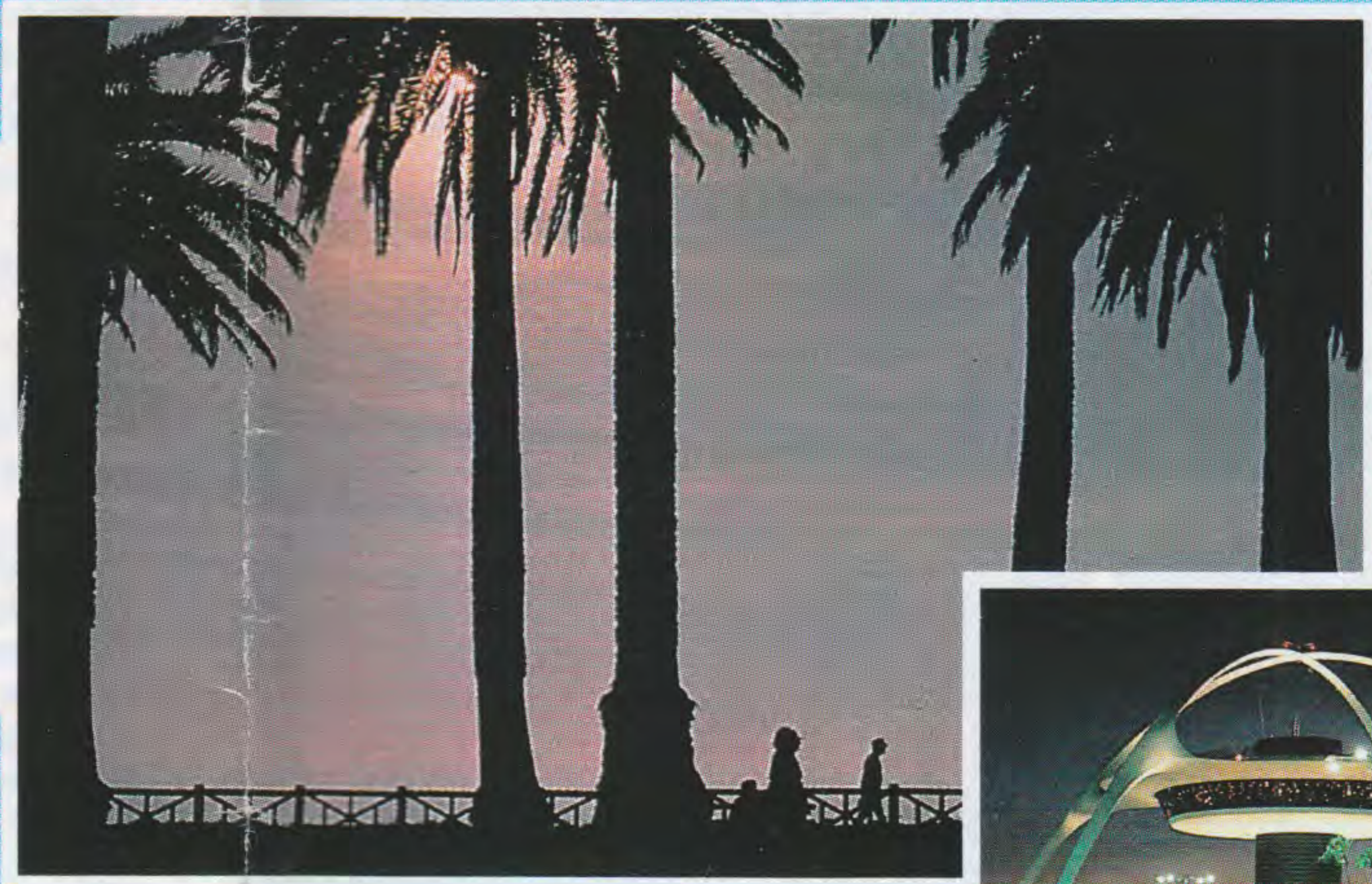
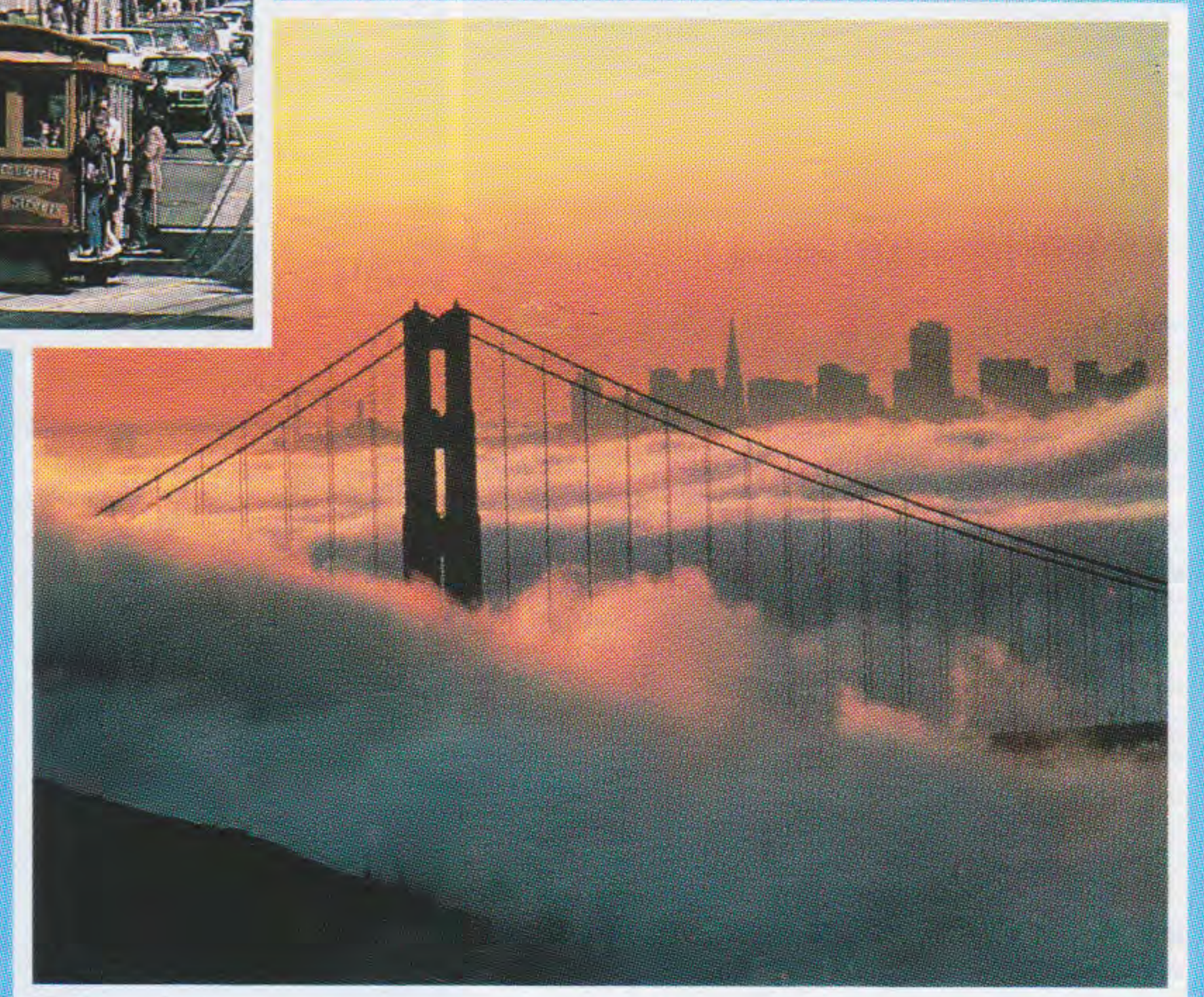
Effective March 2, 1987



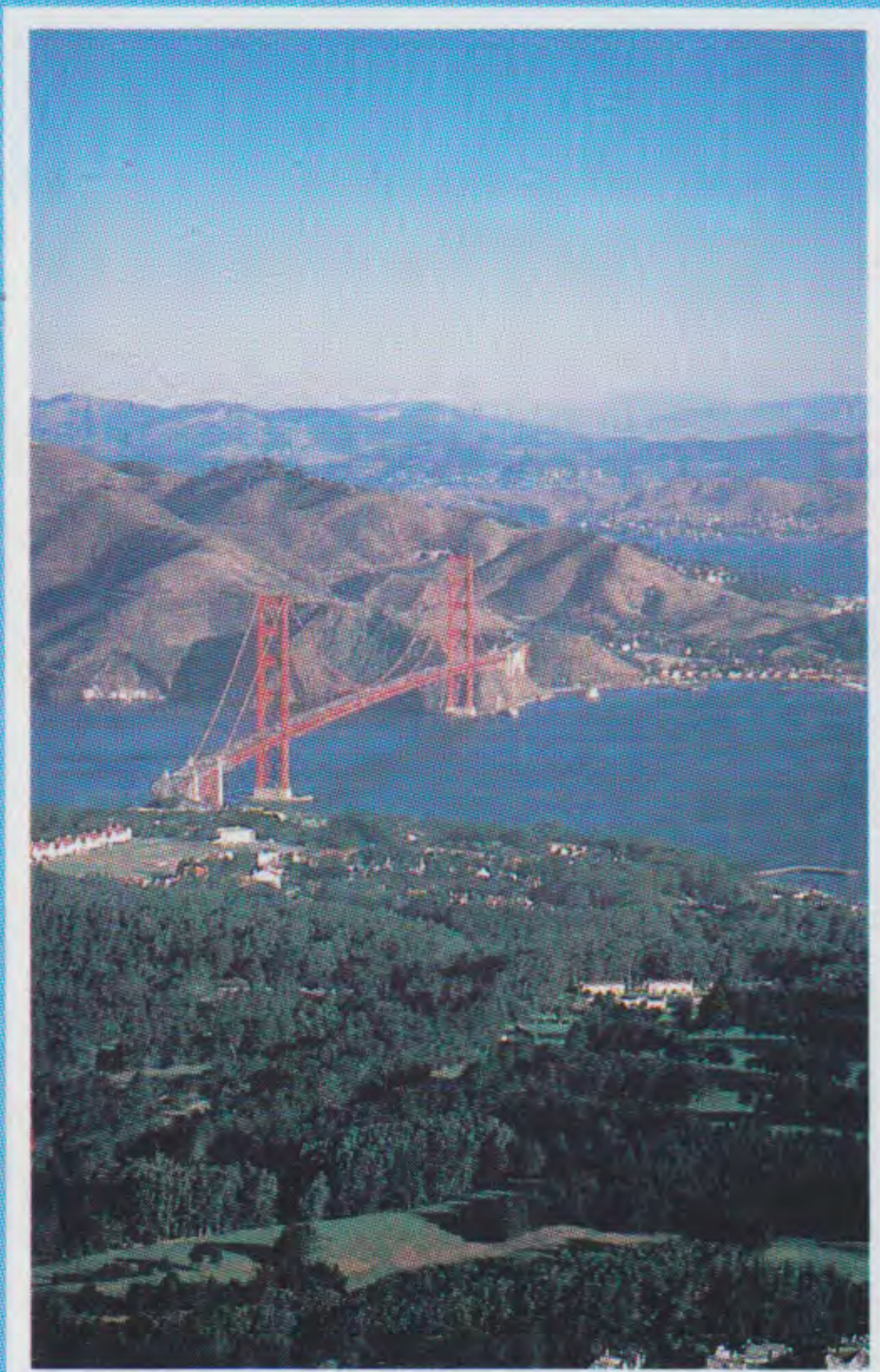
Includes American Airlines
Chicago O'Hare
Connection Supplement

AIRCAL

Effective March 2, 1987



Includes American Airlines
Chicago O'Hare
Connection Supplement

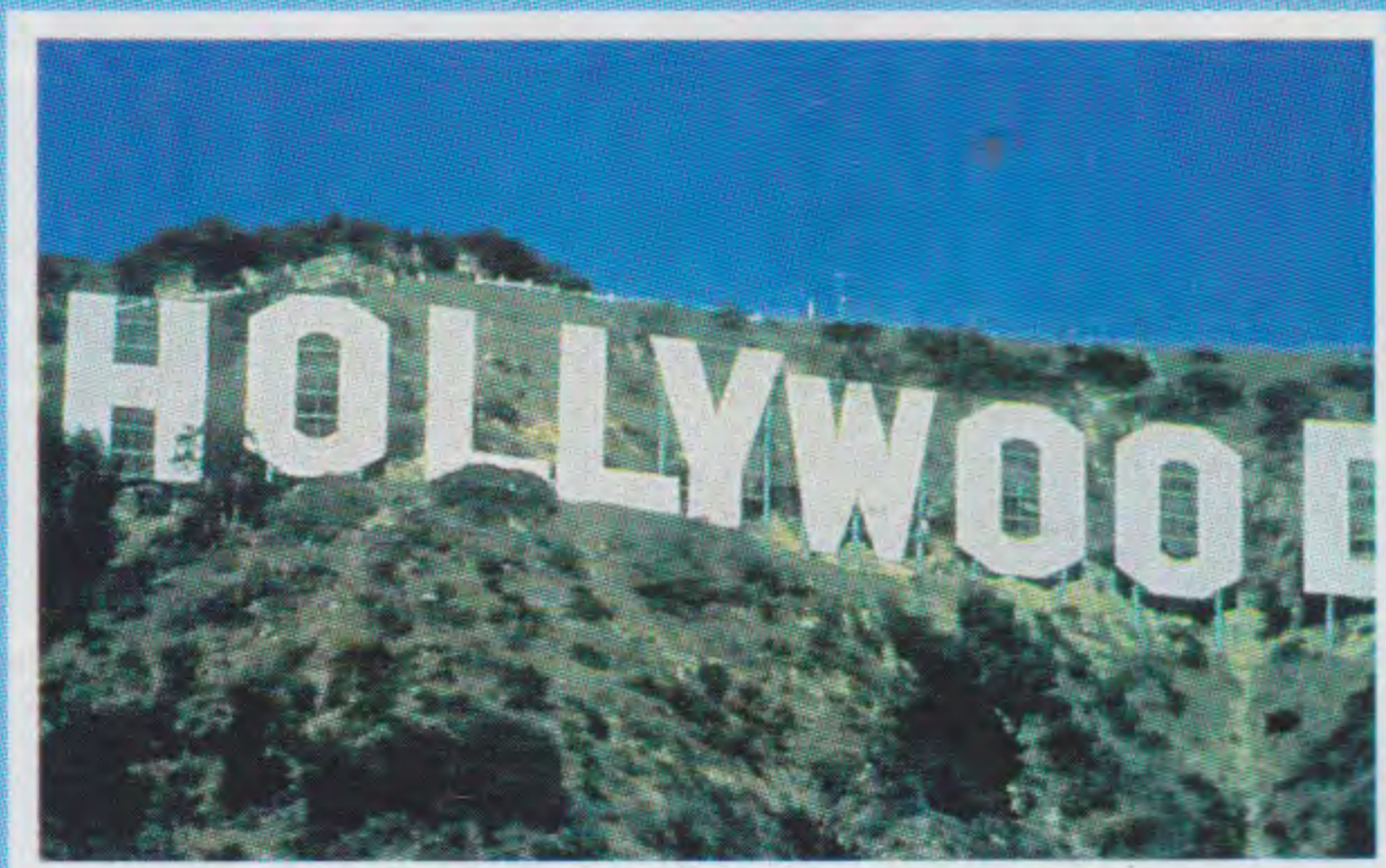


Aircal now operates 170 nonstop flights each business day between the Bay Area and Southern California, including departures every hour between Los Angeles and San Francisco International airports.

And, with AirCal, you get more than frequent flights. You also

get superior service. It starts with single-call reservations service and pre-reserved seating, and continues with convenient one-stop check-in at the airport. On board, there's our famous Executive Class Service with extra legroom for each passenger.

So, when looking for an airline to fly between the Bay Area and Southern California, remember the airline that offers you frequent flights and superior service.



AIRCAL
We Make Flying Easy

Leave	Arrive	Flight No.	Freq.	Via/ Stops	Meals	Leave	Arrive	Flight No.	Freq.	Via/ Stops	Meals
ANCHORAGE (ANC)						ANCHORAGE (Cont'd)					
Reservations: (800) 424-7225						To SAN JOSE					
Air Freight: (907) 243-8849						1 10a 8 32a 720/754 Daily SEA BS					
To BURBANK						7 00a 1 30p 728 ExSu 1 BL					
1 10a 11 09a 720/754 Daily SEA BS						7 00a 2 00p 728/752 ExSu SEA BS					
344 SJC						10 15a 5 20p 926/722 Daily SEA LS					
ABOVE FLIGHT EFFECTIVE 3/22						To SEATTLE					
1 10a 11 09a 720/754 ExSa SEA BS						1 10a 5 11a 720 Daily 0 S					
344 SJC						7 00a 11 04a 728 ExSu 0 B					
ABOVE FLIGHT DISCONTINUED 3/21						10 15a 2 24p 926 Daily 0 L					
10 15a 8 35p 926/724 ExSa SEA LS						4 00p 7 59p 706 Daily 0 D					
350 SFO						4 00p 7 59p 706 ExSu 0 D					
To LAKE TAHOE						ABOVE FLIGHT DISCONTINUED 3/21					
1 10a 10 10a 720/754 Daily SEA BS						ABOVE FLIGHT EFFECTIVE 3/22					
71 SJC						BURBANK (BUR)					
7 00a 3 40p 728/752 ExTuWeSu SEA BS						Reservations: (818) 843-4321					
59 SJC						Air Freight: (818) 846-6591					
To LOS ANGELES						To ANCHORAGE					
1 10a 10 09a 720 Daily 2 SB						6 55a 2 30p 105/759 ExSu SFO BLS					
1 10a 11 08a 720/152 Daily SFO BS						735 SEA					
7 00a 4 10p 728/322 ExSu SJC BL						11 50a 8 05p 177/183 Daily SFO DS					
10 15a 6 10p 926/718 Daily SEA LS						927 SEA					
4 00p 11 58p 706 Daily 2 DS						ABOVE FLIGHT EFFECTIVE 3/22					
ABOVE FLIGHT DISCONTINUED 3/21						11 50a 8 05p 177/739 ExSa SFO DS					
4 00p 11 58p 706 ExSu 2 DS						927 SEA					
ABOVE FLIGHT EFFECTIVE 3/22						ABOVE FLIGHT DISCONTINUED 3/21					
To OAKLAND						2 50p 11 19p 179/761 ExSa SFO DS					
10 15a 7 55p 926/586 Daily PDX LD						4 00p 11 19p 253/731 Su OAK DS					
4 00p 10 25p 706/714 Sa SEA DS						761 SEA					
To ONTARIO						ABOVE FLIGHT EFFECTIVE 3/22					
1 10a 9 50a 720/754 Daily SEA BS						To LAKE TAHOE					
7 00a 3 15p 728/752 ExSu SJC BL						8 15a 10 10a 71 Daily 1 S					
10 15a 8 15p 926/738 Daily SEA LD						To OAKLAND					
To ORANGE COUNTY						10 00a 11 12a 267 Daily 0					
1 10a 9 49a 720/716 Daily SEA BS						1 00p 2 12p 239 Daily 0					
7 00a 3 00p 728 ExSu 2 BL						ABOVE FLIGHT EFFECTIVE 3/22					
10 15a 9 00p 926/106 ExSa PDX LD						1 00p 2 12p 239 ExSa 0					
10 15a 10 09p 926/753 Sa PDX LS						ABOVE FLIGHT DISCONTINUED 3/21					
To PALM SPRINGS						4 00p 5 12p 253 Daily 0					
1 10a 1 10p 720/404 Daily LAX BS						ABOVE FLIGHT EFFECTIVE 3/22					
1 10a 11 05a 720/754 Daily SEA BS						4 00p 5 12p 253 ExSa 0					
900 SJC						ABOVE FLIGHT DISCONTINUED 3/21					
To PORTLAND						7 15p 8 27p 193 Daily 0					
10 15a 3 35p 926 Daily 1 L						ABOVE FLIGHT EFFECTIVE 3/22					
To RENO						7 15p 8 27p 193 ExSa 0					
1 10a 11 20a 720/607 Daily SFO BS						ABOVE FLIGHT DISCONTINUED 3/21					
7 00a 1 00p 728/752 ExSu SEA BS						8 55p 10 07p 279 Sa 0					
10 15a 4 03p 926/722 Daily SEA LS						ABOVE FLIGHT DISCONTINUED 3/21					
To SAN DIEGO						To PORTLAND					
1 10a 10 35a 720/716 Daily SEA S						6 55a 10 02a 105/1 ExSaSu SFO BS					
7 00a 3 12p 728/88 ExSu SJC BL						8 15a 12 20p 71/533 ExSa SJC S					
10 15a 7 47p 926/722 Daily SEA L						8 15a 11 35a 71/351 Sa SJC S					
354 SJC						1 00p 5 59p 239/515 Daily OAK D					
ABOVE FLIGHT DISCONTINUED 3/21						ABOVE FLIGHT EFFECTIVE 3/22					
To SAN FRANCISCO						1 00p 5 59p 239/515 ExSa OAK D					
1 10a 8 40a 720 Daily 1 SB						ABOVE FLIGHT DISCONTINUED 3/21					
7 00a 3 15p 728/752 ExSu SEA BS						4 00p 8 29p 253/517 Daily OAK D					
526 RNO						ABOVE FLIGHT EFFECTIVE 3/22					
10 15a 4 40p 926/718 Daily SEA LS						4 00p 8 29p 253/517 ExSa OAK D					
4 00p 10 45p 706 Daily 1 DS						ABOVE FLIGHT DISCONTINUED 3/21					
ABOVE FLIGHT DISCONTINUED 3/21						5 50p 9 02p 341/96 ExSa SFO S					
4 00p 10 45p 706 ExSu 1 DS						To RENO					
ABOVE FLIGHT EFFECTIVE 3/22						6 55a 11 20a 105/607 ExSu SFO S					
To SAN FRANCISCO						8 15a 12 17p 71/709 Daily SJC S					
1 10a 8 40a 720 Daily 1 SB						11 50a 2 25p 177/183 Daily SFO					
7 00a 3 15p 728/752 ExSu SEA BS						ABOVE FLIGHT EFFECTIVE 3/22					
526 RNO						11 50a 2 25p 177/183 ExSa SFO					
10 15a 4 40p 926/718 Daily SEA LS						ABOVE FLIGHT DISCONTINUED 3/21					
4 00p 10 45p 706 Daily 1 DS						6 55p 9 17p 103/631 ExSa SJC					
ABOVE FLIGHT DISCONTINUED 3/21											
4 00p 10 45p 706 ExSu 1 DS											
ABOVE FLIGHT EFFECTIVE 3/22											

Ex-Except Tu-Tuesday Th-Thursday Sa-Saturday
Mo-Monday We-Wednesday Fr-Friday Su-Sunday
Certain Flight Schedules And Equipment Types Subject To Change.



EFFECTIVE MARCH 2, 1987
ALL TIMES SHOWN ARE LOCAL

Leave	Arrive	Flight No.	Freq.	Via/ Stops	Meals
-------	--------	------------	-------	------------	-------

BURBANK (Cont'd)

To SAN FRANCISCO
6 55a 8 04a 105 ExSu 0 S
11 50a 1 05p 177 Daily 0
ABOVE FLIGHT EFFECTIVE 3/22
11 50a 1 05p 177 ExSa 0
ABOVE FLIGHT DISCONTINUED 3/21
2 50p 4 05p 179 Daily 0
5 50p 7 05p 341 ExSa 0

To SAN JOSE
8 15a 9 14a 71 Daily 0 S
6 55p 7 54p 103 ExSa 0

To SEATTLE
6 55a 10 27a 105/759 ExSu SFO BS
8 15a 2 07p 71/709 Daily SJC S
11 50a 4 20p 177/183 Daily SFO S
ABOVE FLIGHT EFFECTIVE 3/22
11 50a 4 25p 177/739 Daily SFO S
ABOVE FLIGHT EFFECTIVE 3/22
11 50a 4 20p 177/183 ExSa SFO S
ABOVE FLIGHT DISCONTINUED 3/21
11 50a 4 25p 177/739 ExSa SFO S
ABOVE FLIGHT DISCONTINUED 3/21
2 50p 8 25p 179/761 Daily SFO D
4 00p 7 43p 253/731 Su OAK D
ABOVE FLIGHT EFFECTIVE 3/22
5 50p 10 56p 341/173 ExSa SFO
6 55p 11 10p 103/631 ExSa SJC S

To VANCOUVER, B.C.
8 15a 3 15p 71/369 Daily SJC SL

CHICAGO (CHI)
Reservations: (800) 424-7225
Air Freight: (312) 686-2745

To LAKE TAHOE
8 00a 1 50p 94 Daily 2 B

To OAKLAND
8 00a 12 58p 94/255 Daily SNA B
3 00p 7 23p 96/233 Sa SNA S
ABOVE FLIGHT DISCONTINUED 3/21

To ORANGE COUNTY
8 00a 10 29a 94 Daily 0 B
3 00p 5 29p 96 Daily 0 S
6 45p 9 14p 98 Daily 0 D

To PORTLAND
3 00p 9 02p 96 Daily 2 S

To RENO
8 00a 2 25p 94/183 Daily SFO B

To SACRAMENTO
8 00a 12 1p 94/43 Daily SNA B
3 00p 8 16p 96/67 ExSa SNA S

To SAN FRANCISCO
8 00a 12 45p 94 Daily 1 B
3 00p 7 10p 96 Daily 1 S
6 45p 10 45p 98 Fr 1 D

To SAN JOSE
3 00p 7 35p 96/903 Daily SNA S

LAKE TAHOE (TVL)
Reservations: (800) 424-7225
Air Freight: (916) 542-2204

To ANCHORAGE
2 20p 11 19p 97/761 ExSa SFO S

Leave	Arrive	Flight No.	Freq.	Via/ Stops	Meals
-------	--------	------------	-------	------------	-------

LAKE TAHOE (Cont'd)

To BURBANK
2 20p 5 35p 97/190 Daily SFO
4 30p 6 30p 62 Daily 1

To CHICAGO
2 20p 11 10p 97 Daily 2 D

To LOS ANGELES
10 45a 12 57p 60 ExTuWe 1
2 20p 6 10p 97/718 Daily SFO
2 20p 5 08p 97/126 ExSa SFO
4 30p 6 45p 62/722 Daily SJC

To ONTARIO
10 45a 1 00p 60/512 ExTuWe SJC
2 20p 5 35p 97/162 Daily SFO
4 30p 8 15p 62/738 Daily SJC

To ORANGE COUNTY
10 45a 3 00p 60/728 ExTuWe SJC
10 45a 1 04p 60/342 ExTuWe SJC
ABOVE FLIGHT EFFECTIVE 3/22
10 45a 1 04p 60/342 ExTuWeSa SJC
ABOVE FLIGHT DISCONTINUED 3/21
2 20p 4 38p 97 Daily 1
4 30p 7 35p 62/904 Daily SJC

To PALM SPRINGS
2 20p 4 52p 97/526 Daily SFO

To PORTLAND
2 20p 5 22p 97/537 ExSa SFO S
4 30p 7 05p 62/527 Daily SJC D

To SAN DIEGO
10 45a 3 12p 60/88 ExTuWeSu SJC
4 30p 7 47p 62/354 Daily SJC

To SAN FRANCISCO
2 20p 3 05p 97 Daily 0

To SAN JOSE
10 45a 11 25a 60 ExTuWe 0
4 30p 5 10p 62 Daily 0

To SEATTLE
2 20p 8 25p 97/761 Daily SFO D

To VANCOUVER, B.C.
10 45a 3 15p 60/369 ExTuWe SJC L

LOS ANGELES (LAX)
Reservations: (213) 627-5401
Air Freight: (213) 215-5145

To ANCHORAGE
6 40a 2 30p 543/735 Daily SJC BLS
ABOVE FLIGHT DISCONTINUED 3/21
6 40a 2 30p 543/735 ExSu SJC BLS
ABOVE FLIGHT EFFECTIVE 3/22
7 00a 2 30p 759/735 Daily SEA BLS
ABOVE FLIGHT DISCONTINUED 3/21
7 00a 2 30p 759/735 ExSu SEA BLS
ABOVE FLIGHT EFFECTIVE 3/22
1 00p 8 05p 739/927 Daily SEA DS
4 00p 11 19p 147/761 ExSa SFO DS
5 00p 11 19p 761 ExSa 2 DS

To LAKE TAHOE
6 40a 10 10a 543/71 Daily SJC S
11 00a 1 50p 763/94 Daily SFO S
1 30p 3 40p 59 ExTuWe 1

Leave	Arrive	Flight No.	Freq.	Via/ Stops	Meals
-------	--------	------------	-------	------------	-------

LOS ANGELES (Cont'd)

To OAKLAND
6 55a 7 59a 245 ExSu 0 S
8 25a 9 34a 217 Daily 0 S
11 00a 12 07p 223 Daily 0
1 00p 2 07p 229 Daily 0
3 05p 4 12p 515 Daily 0
6 40p 7 47p 227 Daily 0
9 20p 10 29p 293 ExSa 0

To PALM SPRINGS
12 30p 1 10p 404 Daily 0

To PORTLAND
6 40a 9 35a 543 Daily 1 SB
7 00a 10 02a 759/1 ExSaSu SFO BS
7 00a 10 02a 759/511 Su SFO S
8 30a 12 20p 351/533 ExSa SJC S
8 30a 11 35a 351 Sa 1 S
10 00a 2 20p 135/519 Daily SFO S
11 50a 4 35p 331/521 Daily SJC S
1 30p 4 35p 59/521 ExTuWe SJC S
2 00p 5 22p 153/537 ExSa SFO S
3 05p 5 59p 515 Daily 1 D
4 00p 7 05p 527 Daily 1 D
5 00p 9 02p 761/96 Daily SFO S
6 00p 9 02p 129/96 ExSa SFO S

To RENO
9 00a 11 20a 607 Daily 1 S
12 00n 2 25p 183 Daily 1
5 00p 7 50p 761/781 Daily SFO
5 10p 7 57p 349/323 ExSa SJC
7 15p 9 17p 631 Daily 1
9 00p 11 20p 161 Daily 1

To SACRAMENTO
7 25a 8 35a 443 Daily 0 S
9 30a 10 41a 403 Daily 0
11 30a 12 41p 419 Daily 0
ABOVE FLIGHT EFFECTIVE 3/22
11 30a 12 41p 419 ExSa 0
ABOVE FLIGHT DISCONTINUED 3/21
2 30p 3 41p 435 Daily 0
4 30p 5 41p 421 Daily 0
8 35p 9 46p 423 ExSa 0

To SAN FRANCISCO
7 00a 8 07a 759 Daily 0 S
8 00a 9 07a 109 ExSu 0 S
9 00a 10 07a 607 Daily 0
10 00a 11 07a 135 Daily 0
11 00a 12 07p 763 Daily 0
12 00n 1 07p 183 Daily 0
1 00p 2 07p 739 Daily 0
2 00p 3 07p 153 Daily 0
3 00p 4 07p 175 ExSa 0
4 00p 5 07p 147 Daily 0
5 00p 6 07p 761 Daily 0
6 00p 7 07p 129 ExSa 0
7 00p 8 07p 189 Daily 0
8 00p 9 07p 195 ExSa 0
9 00p 10 07p 161 Daily 0
10 00p 11 07p 181 Daily 0
11 00p 12 03a 199 Daily 0

To SAN JOSE
6 40a 7 39a 543 Daily 0 S
8 30a 9 32a 351 Daily 0 S
10 15a 11 17a 381 ExSa 0
11 50a 12 55p 331 Daily 0
1 30p 2 29p 59 ExTuWe 0
2 50p 3 55p 325 Sa 0
ABOVE FLIGHT EFFECTIVE 3/22
4 00p 5 00p 527 Daily 0
5 10p 6 12p 349 Daily 0
7 15p 8 17p 631 Daily 0
8 30p 9 32p 395 Sa 0

Leave	Arrive	Flight No.	Freq.	Via/ Stops	Meals
-------	--------	------------	-------	------------	-------

LOS ANGELES (Cont'd)

To SEATTLE
7 00a 10 27a 759 Daily 1 SB
11 00a 2 20p 763 Daily 1 SL
12 00n 4 20p 183 Daily 2 S
1 00p 4 25p 739 Daily 1 S
5 00p 8 25p 761 Daily 1 D
7 15p 11 10p 631 Daily 2 S
11 00p 2 10a 199 Daily 1 S

To VANCOUVER, B.C.
6 40a 10 45a 543/73 ExSu SJC BS
10 15a 3 15p 381/369 ExSa SJC L
5 10p 10 10p 349/903 Daily SJC D

OAKLAND (OAK)
Reservations: (415) 632-5200
Air Freight: (415) 577-4700

To ANCHORAGE
9 20a 2 30p 731/735 Su SEA BL
ABOVE FLIGHT DISCONTINUED 3/21
6 00p 11 19p 731/761 Su SEA DS
ABOVE FLIGHT EFFECTIVE 3/22

To BURBANK
6 55a 7 54a 238 ExSu 0 S
11 30a 12 42p 220 Daily 0
2 30p 3 42p 246 Daily 0
ABOVE FLIGHT EFFECTIVE 3/22
2 30p 3 42p 246 ExSa 0
ABOVE FLIGHT DISCONTINUED 3/21
5 45p 6 57p 280 Daily 0
ABOVE FLIGHT EFFECTIVE 3/22
5 45p 6 57p 280 ExSa 0
ABOVE FLIGHT DISCONTINUED 3/21
7 25p 8 37p 254 Sa 0
ABOVE FLIGHT DISCONTINUED 3/21

To CHICAGO
8 35a 4 50p 278/95 ExSu SNA LS
3 00p 11 10p 68/97 Daily SNA D
ABOVE FLIGHT EFFECTIVE 3/21
3 00p 11 10p 68/97 ExSa SNA D
ABOVE FLIGHT DISCONTINUED 3/20

To LOS ANGELES
6 50a 7 59a 224 ExSu 0 S
8 20a 9 27a 228 Daily 0 S
10 00a 11 12a 230 Daily 0
ABOVE FLIGHT EFFECTIVE 3/22
10 00a 11 12a 230 ExSa 0
ABOVE FLIGHT DISCONTINUED 3/21
11 30a 12 41p 252 Daily 0
2 30p 3 41p 216 Daily 0
5 30p 6 41p 222 Daily 0
8 05p 9 16p 218 Daily 0

To ONTARIO
9 00a 10 08a 516 Daily 0
12 30p 1 38p 398 Daily 0
4 00p 5 08p 258 Daily 0
8 15p 9 19p 586 Daily 0

To ORANGE COUNTY
6 55a 8 13a 256 Daily 0 S
7 35a 9 22a 352 Su 1 S
8 35a 9 53a 278 ExSu 0 S
1 20p 2 38p 366 Daily 0
3 00p 4 18p 68 Daily 0
ABOVE FLIGHT EFFECTIVE 3/21
3 00p 4 18p 68 ExSa 0
ABOVE FLIGHT DISCONTINUED 3/20
4 50p 6 03p 542 Daily 0
7 15p 8 33p 492 Daily 0
ABOVE FLIGHT EFFECTIVE 3/22
7 15p 8 33p 492 ExSa 0
ABOVE FLIGHT DISCONTINUED 3/21
7 45p 9 03p 482 Sa 0
ABOVE FLIGHT DISCONTINUED 3/21

B-Breakfast L-Lunch D-Dinner S-Snack
*Night Coach Fare Applies - Subject To Change.
Consult Your AirCal Agent For Details.

Ex-Except Tu-Tuesday Th-Thursday Sa-Saturday
Mo-Monday We-Wednesday Fr-Friday Su-Sunday
Certain Flight Schedules And Equipment Types Subject To Change.

Leave	Arrive	Flight No.	Freq.	Via/ Stops	Meals
SAN FRANCISCO (SFO)					
Reservations: (415) 433-2660					
Air Freight: (415) 877-0113					
To ANCHORAGE					
8 35a	2 30p	759/735	Daily	SEA	BL
ABOVE FLIGHT DISCONTINUED 3/21					
8 35a	2 30p	759/735	ExSu	SEA	BL
ABOVE FLIGHT EFFECTIVE 3/22					
11 55a	8 05p	519/927	Daily	PDX	DS
2 30p	8 05p	739/927	Daily	SEA	DS
6 30p	11 19p	761	ExSa	1	DS
To BURBANK					
8 25a	9 40a	130	ExSu	0	S
1 20p	2 35p	198	Daily	0	0
ABOVE FLIGHT EFFECTIVE 3/22					
1 20p	2 35p	198	ExSa	0	0
ABOVE FLIGHT DISCONTINUED 3/21					
4 20p	5 35p	190	Daily	0	0
7 20p	8 35p	350	ExSa	0	0
To CHICAGO					
8 55a	4 44p	95	Daily	1	SL
3 25p	11 10p	97	Daily	1	D
To LAKE TAHOE					
1 05p	1 50p	94	Daily	0	0
To LOS ANGELES					
7 00a	8 09a	160	ExSu	0	S
7 30a	8 40a	266	Sa	0	S
8 00a	9 09a	688	Daily	0	S
9 00a	10 09a	720	Daily	0	0
10 00a	11 08a	152	Daily	0	0
11 00a	12 08p	136	Daily	0	0
12 00n	1 08p	112	Daily	0	0
1 00p	2 08p	702	Daily	0	0
2 00p	3 08p	710	Daily	0	0
3 00p	4 08p	176	Daily	0	0
4 00p	5 08p	126	ExSa	0	0
5 00p	6 10p	718	Daily	0	0
6 00p	7 10p	154	Daily	0	0
7 00p	8 08p	724	Daily	0	0
8 00p	9 08p	128	Daily	0	0
9 00p	10 08p	138	ExSa	0	0
10 00p	11 05p	178	ExSa	0	0
11 00p	11 58p	706	Daily	0	0
11 55p	12 57a	196	Daily	0	0
To ONTARIO					
8 10a	9 20a	102	ExSu	0	S
12 40p	1 50p	708	Daily	0	0
4 25p	5 35p	162	Daily	0	0
6 55p	8 05p	156	ExSa	0	0
8 50p	10 00p	140	ExSa	0	0
To ORANGE COUNTY					
6 45a	7 57a	2	ExSu	0	S
8 55a	10 10a	95	Daily	0	S
10 20a	11 39a	132	Daily	0	0
12 20p	1 35p	528	ExSa	0	0
3 25p	4 38p	97	Daily	0	0
5 35p	6 50p	42	ExSa	0	0
7 45p	9 00p	106	ExSa	0	0
8 40p	9 52p	72	ExSa	0	0
To PALM SPRINGS					
11 00a	1 10p	136/404	Daily	LAX	0
3 35p	4 52p	526	Daily	0	0
To PORTLAND					
8 30a	10 02a	1	ExSaSu	0	B
8 30a	10 02a	511	Su	0	B
11 55a	2 20p	519	Daily	1	S
3 50p	5 22p	537	ExSa	0	S
7 00p	9 25p	781	Daily	1	S
7 30p	9 02p	96	Daily	0	S
SAN FRANCISCO (Cont'd)					
To RENO					
10 30a	11 20a	607	Daily	0	0
11 55a	12 45p	519	Daily	0	0
1 35p	2 25p	183	Daily	0	0
7 00p	7 50p	781	Daily	0	0
10 30p	11 20p	161	Daily	0	0
To SAN DIEGO					
6 45a	10 35a	2/716	ExSu	SNA	S
To SEATTLE					
12 25a	2 10a	199	Daily	0	S
ABOVE FLIGHT EFFECTIVE 3/23					
8 35a	10 27a	759	Daily	0	B
12 25p	2 20p	763	Daily	0	L
1 35p	4 20p	183	Daily	1	S
2 30p	4 25p	739	Daily	0	S
6 30p	8 25p	761	Daily	0	D
9 10p	10 56p	173	ExSa	0	S
SAN JOSE (SJC)					
Reservations: (408) 286-7870					
Air Freight: (408) 277-5419					
To ANCHORAGE					
8 10a	2 30p	735	Daily	1	BL
ABOVE FLIGHT DISCONTINUED 3/21					
8 10a	2 30p	735	ExSu	1	BL
ABOVE FLIGHT EFFECTIVE 3/22					
11 35a	8 05p	709/927	Daily	SEA	DS
5 10p	11 19p	717/761	ExSa	SEA	DS
To BURBANK					
10 00a	11 09a	344	Daily	0	0
ABOVE FLIGHT EFFECTIVE 3/22					
10 00a	11 09a	344	ExSa	0	0
ABOVE FLIGHT DISCONTINUED 3/21					
5 35p	6 30p	62	Daily	0	0
To CHICAGO					
8 15a	4 50p	352/95	Daily	SNA	LS
To LAKE TAHOE					
9 35a	10 10a	71	Daily	0	0
3 05p	3 40p	59	ExTuWe	0	0
To LOS ANGELES					
7 00a	8 05a	316	Daily	0	S
8 40a	9 45a	506	Daily	0	S
10 00a	11 05a	318	ExSa	0	0
11 55a	12 57p	60	ExTuWe	0	0
1 15p	2 23p	320	ExSa	0	0
3 05p	4 10p	322	Daily	0	0
5 40p	6 45p	722	Daily	0	0
7 00p	8 05p	510	Daily	0	0
To ONTARIO					
8 50a	9 50a	754	Daily	0	S
12 00n	1 00p	512	Daily	0	0
2 15p	3 15p	752	Daily	0	0
4 35p	5 40p	340	Daily	0	0
ABOVE FLIGHT EFFECTIVE 3/22					
4 35p	5 40p	340	ExSa	0	0
ABOVE FLIGHT DISCONTINUED 3/21					
4 45p	5 50p	386	Sa	0	0
ABOVE FLIGHT DISCONTINUED 3/21					
7 15p	8 15p	738	Daily	0	0
9 35p	10 35p	604	ExSa	0	0

B-Breakfast L-Lunch D-Dinner S-Snack
*Night Coach Fare Applies - Subject To Change.
Consult Your AirCal Agent For Details.

IT'S FOR YOU.



Airfone®

Ever need to call your office, this very minute? This very second? Or, need to call someone about a change in plans, say, like switching airports?

Well, now you can since we've recently equipped most of our jets with Airfone, the sophisticated new inflight telephone system.

Calling from an AirCal Airfone is easy! Just insert any major credit card and follow the simple directions. Then sit back in your seat for a clear, distortion-free conversation to anywhere in the U.S.!

AIRCAL

We Make Flying Easy

Experience AirCal's 737 Executive Class Service And Enjoy The Benefits of AAdvantage.[®]



Service unmatched in the West!

Stretch out with First Class legroom aboard every Boeing 737. Enjoy complimentary morning newspapers and a continental breakfast on flights before 9:00 a.m., and a variety of superior snacks during the day. Plus, on longer flight segments, innovative California-fresh meals are offered. There's also premium wines

by the glass and inflight public Airfone service* available. AirCal's 737 Executive Class Service. All this, for not a penny more than coach!



Earn AAdvantage Miles on Each Flight.

Earn 750 minimum miles credit in the American Airlines AAdvantage program with every AirCal flight.

Now those quick hops can really add up! For example, flying between Southern California and the Bay Area is now worth 1500 miles round-trip, more than double the normal miles!

Plus, with all the AAdvantage partners, you can earn travel awards to visit virtually every corner of the globe! Now Hawaii, Europe and the Orient are closer than ever.

If you are not already an AAdvantage member, ask an AirCal or American Airlines representative for enrollment information today!



*Nominal charge for wine and Airfone service.
AAdvantage[®] is a registered service mark of American Airlines, Inc.

AIRCAL
We Make Flying Easy

Leave	Arrive	Flight No.	Freq.	Via/ Stops	Meals	Leave	Arrive	Flight No.	Freq.	Via/ Stops	Meals
SAN JOSE (Cont'd)						SEATTLE (Cont'd)					
To ORANGE COUNTY						To LAKE TAHOE					
7 00a	8 10a	324	ExSu	0	S	6 40a	10 10a	754/71	Daily	SJC	BS
8 15a	9 22a	352	Daily	0	S	10 35a	1 50p	708/94	Daily	SFO	S
11 50a	1 04p	342	Daily	0		11 30a	3 40p	752/59	ExTuWe	SJC	S
11 50a	1 04p	342	ExSa	0		11 40a	3 40p	728/59	ExTuWe	SJC	L
ABOVE FLIGHT EFFECTIVE 3/22						To LOS ANGELES					
ABOVE FLIGHT DISCONTINUED 3/21						6 50a 10 09a 720 Daily 1 B					
1 50p	3 00p	728	Daily	0		2 45p	6 45p	722	Daily	2	S
4 05p	5 19p	64	ExSa	0		2 50p	6 10p	718	Daily	1	S
4 10p	5 24p	338	Sa	0		4 50p	8 08p	724	Daily	1	D
ABOVE FLIGHT EFFECTIVE 3/22						8 55p 11 58p 706 Daily 1 S					
ABOVE FLIGHT DISCONTINUED 3/21						To OAKLAND					
4 40p	5 54p	382	Sa	0		8 30p	10 25p	714	Sa	0	S
6 25p	7 35p	904	Daily	0		To ONTARIO					
9 30p	10 40p	392	ExSa	0		6 40a	9 50a	754	Daily	1	BS
To PALM SPRINGS						10 35a 1 50p 708 Daily 1 S					
9 55a	11 05a	900	Daily	0		11 30a	3 15p	752	Daily	2	S
10 00a	1 10p	318/404	ExSa	LAX		5 00p	8 15p	738	Daily	1	D
To PORTLAND						To ORANGE COUNTY					
8 00a	9 35a	543	Daily	0	B	7 20a	9 49a	716	Daily	0	B
10 00a	11 35a	351	Sa	0	S	11 40a	3 00p	728	Daily	1	L
10 45a	12 20p	533	ExSa	0	S	2 45p	7 35p	722/904	Daily	SJC	S
11 35a	2 20p	709/519	Daily	RNO	S	2 50p	6 50p	718/42	ExSa	SFO	S
3 00p	4 35p	521	Daily	0	S	4 50p	9 00p	724/106	ExSa	SFO	S
5 30p	7 05p	527	Daily	0	D	5 55p	8 24p	502	ExSa	0	D
6 15p	9 25p	45/781	ExSa	RNO	S	7 40p	10 09p	753	Sa	0	S
To RENO						To PALM SPRINGS					
11 35a	12 17p	709	Daily	0		6 50a	1 10p	720/404	Daily	LAX	B
6 15p	7 04p	45	ExSa	0		To PORTLAND					
7 15p	7 57p	323	ExSa	0		3 00p	3 35p	926	Daily	0	
8 35p	9 17p	631	Daily	0		To RENO					
To SAN DIEGO						6 50a 11 20a 720/607 Daily SFO B					
7 15a	8 24a	58	ExSaSu	0	S	11 30a	1 00p	752	Daily	0	S
8 15a	10 35a	352/716	Daily	SNA	S	2 45p	4 03p	722	Daily	0	S
11 40a	12 52p	380	ExSa	0		4 50p	7 50p	724/781	Daily	SFO	S
2 00p	3 12p	88	Daily	0		5 00p	9 17p	738/631	Daily	SJC	D
6 35p	7 47p	354	Daily	0		5 00p	7 57p	738/323	ExSa	SJC	D
9 30p	10 42p	522	Daily	0		7 45p	9 15p	712	ExSa	0	S
To SEATTLE						To SAN DIEGO					
8 10a	10 05a	735	Daily	0	B	7 20a	10 35a	716	Daily	1	B
11 35a	2 07p	709	Daily	1	S	11 40a	3 12p	728/88	Daily	SJC	L
3 00p	7 20p	521/753	Sa	PDX	S	2 45p	7 47p	722/354	Daily	SJC	S
5 10p	7 05p	717	Daily	0	D	To SAN FRANCISCO					
8 35p	11 10p	631	Daily	1	S	6 50a	8 40a	720	Daily	0	B
To VANCOUVER, B.C.						10 35a 12 25p 708 Daily 0 S					
8 30a	10 45a	73	ExSu	0	B	2 50p	4 40p	718	Daily	0	S
1 00p	3 15p	369	Daily	0	L	4 50p	6 37p	724	Daily	0	D
7 55p	10 10p	903	Daily	0	D	7 45p	10 40p	712	ExSa	1	S
SEATTLE (SEA)						8 55p 10 45p 706 Daily 0 S					
Reservations: (800) 424-7225						To SAN JOSE					
Air Freight: (206) 433-6742						6 40a 8 32a 754 Daily 0 B					
To ANCHORAGE						11 30a 2 00p 752 Daily 1 S					
6 55a	9 40a	925	Daily	0	B	11 40a	1 30p	728	Daily	0	L
11 45a	2 30p	735	Daily	0	L	2 45p	5 20p	722	Daily	1	S
ABOVE FLIGHT DISCONTINUED 3/21						5 00p 6 53p 738 Daily 0 D					
11 45a	2 30p	735	ExSu	0	L	VANCOUVER, B.C. (YVR)					
ABOVE FLIGHT EFFECTIVE 3/22						Reservations: (800) 424-7225					
5 20p	8 05p	927	Daily	0	D	To BURBANK					
9 00p	11 19p	761	ExSa	0	S	7 20a	11 09a	900/344	Daily	SJC	B
To BURBANK						ABOVE FLIGHT EFFECTIVE 3/22					
6 40a	11 09a	754/344	Daily	SJC	B	ABOVE FLIGHT DISCONTINUED 3/21					
6 40a	11 09a	754/344	ExSa	SJC	B	To BURBANK					
ABOVE FLIGHT DISCONTINUED 3/21						7 20a 11 09a 900/344 ExSa SJC B					
10 35a	2 35p	708/198	Daily	SFO	S	ABOVE FLIGHT DISCONTINUED 3/21					
ABOVE FLIGHT EFFECTIVE 3/22											
10 35a	2 35p	708/198	ExSa	SFO	S						
ABOVE FLIGHT DISCONTINUED 3/21											
4 50p	8 35p	724/350	ExSa	SFO	S						

Ex-Except Tu-Tuesday Th-Thursday Sa-Saturday
Mo-Monday We-Wednesday Fr-Friday Su-Sunday
Certain Flight Schedules And Equipment Types Subject To Change.

Leave	Arrive	Flight No.	Freq.	Via/ Stops	Meals	Leave	Arrive	Flight No.	Freq.	Via/ Stops	Meals
VANCOUVER, B.C. (Cont'd)						VANCOUVER, B.C. (Cont'd)					
To LAKE TAHOE						To PALM SPRINGS					
11 25a	3 40p	88/59	ExTuWeSu	SJC	L	7 20a	11 05a	900	Daily	1	B
To LOS ANGELES						To RENO					
7 20a	11 05a	900/318	ExSa	SJC	B	7 20a	12 17p	900/709	Daily	SJC	B
7 20a	12 57p	900/60	ExTuWe	SJC	B	3 50p	9 17p	904/631	Daily	SJC	D
11 25a	4 10p	88/322	ExSu	SJC	L	3 50p	7 57p	904/323	ExSa	SJC	D
3 50p	8 05p	904/510	Daily	SJC	D	To SAN DIEGO					
To ONTARIO						7 20a 12 52p 900/380 ExSa SJC B					
7 20a	1 00p	900/512	Daily	SJC	B	11 25a	3 12p	88	ExSu	1	L
11 25a	3 15p	88/752	ExSu	SJC	L	3 50p	7 47p	904/354	Daily	SJC	D
3 50a	8 15p	904/738	Daily	SJC	D	To SAN JOSE					
To ORANGE COUNTY						7 20a 9 35a 900 Daily 0 B					
7 20a	1 04p	900/342	Daily	SJC	B	11 25a	1 40p	88	ExSu	0	L
ABOVE FLIGHT EFFECTIVE 3/22						3 50p 6 05p 904 Daily 0 D					
ABOVE FLIGHT DISCONTINUED 3/21											
11 25a	5 19p	88/64	ExSaSu	SJC	L						
11 25a	5 54p	88/382	Sa	SJC	L						
ABOVE FLIGHT DISCONTINUED 3/21											
11 25a	5 24p	88/338	Sa	SJC	L						
ABOVE FLIGHT EFFECTIVE 3/22											
3 50p	7 35p	904	Daily	1	D						

Flight Schedule Data copyright © 1987 by
Official Airline Guides, Inc., Oak Brook, Illinois, U.S.A.

Now You Can PRE-RESERVE Your Favorite Seat!

Reserve your favorite AirCal seat up to 30 days prior to departure with our new Advanced Seat Assignments!

Whenever you or your travel agent books your next AirCal flight, just ask to pre-reserve your favorite seat. It's your choice: window or aisle, smoking or non-smoking section. We'll reserve your seat and see that it's waiting for you when you check-in at our boarding gate.



B-Breakfast L-Lunch D-Dinner S-Snack
*Night Coach Fare Applies - Subject To Change.
Consult Your AirCal Agent For Details.

AIRCAL

American Airlines

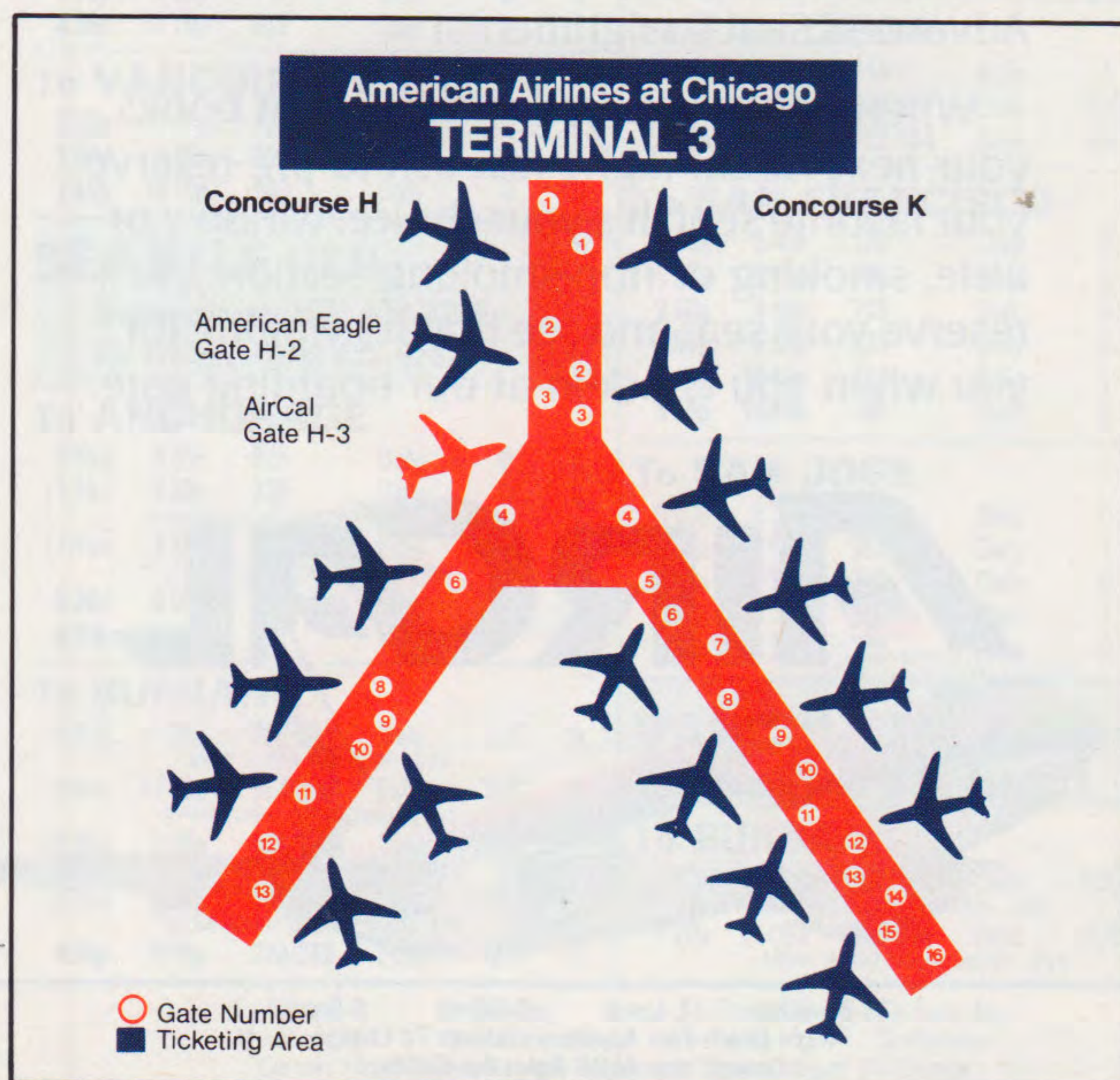
American Eagle

Quick Reference Schedule between John Wayne/Orange County and 41 cities.

Including...

Akron/Canton	Hartford	Syracuse
Albany	Indianapolis	Toronto
Atlanta	Long Island	Washington/ National
Baltimore	Louisville	
Boston	Manchester, U.K.	American Eagle
Buffalo	Milwaukee	Flint
Charlotte	Montreal	Green Bay
Charleston, S.C.	Nashville	Kalamazoo
Cincinnati	Newark	Lansing
Cleveland	New York/ La Guardia	Madison
Columbus	Philadelphia	Marquette
Dayton	Pittsburgh	Pellston
Detroit	Rochester	South Bend
Fort Wayne	San Juan, P.R.	Traverse City
Grand Rapids		

Convenient connections through Chicago O'Hare.



American Eagle is a registered service mark of American Airlines, Inc.

ORANGE COUNTY QUICK REFERENCE TIMETABLE Effective March 2, 1987

AIRCAL - AMERICAN AIRLINES
CONNECTIONS THROUGH
CHICAGO O'HARE TO/FROM
JOHN WAYNE-ORANGE COUNTY

Reservations: (714) 752-1000

Air Freight: (714) 756-8156

Leave	Arrive	Flight No.	Freq.	Via/ Stops	Remarks	Leave	Arrive	Flight No.	Freq.	Via/ Stops	Remarks
To AKRON / CANTON						From AKRON / CANTON					
6 53a	3 33p	92/AA550	ExSu	ORD	D- 4/4	5 28p	9 14p	AA969/98	Daily	ORD	D
6 53a	3 44p	92/AA550	ExSu	ORD	E- 4/5						
8 00a	7 11p	90/AA526	Su	ORD	B						
To ALBANY						From ALBANY					
6 53a	4 05p	92/AA108	ExSu	ORD	D- 4/4	1 17p	5 29p	AA397/96	Daily	ORD	LS
6 53a	4 12p	92/AA108	ExSu	ORD	E- 4/5	4 50p	9 14p	AA617/98	Daily	ORD	D
8 00a	6 39p	90/AA304	Su	ORD	D- 4/4						
8 00a	6 48p	90/AA304	Su	ORD	E- 4/5						
10 50a	10 47p	95/AA224	Daily	ORD	D- 4/4						
10 50a	10 57p	95/AA224	Daily	ORD	E- 4/5						
To ATLANTA						From ATLANTA					
6 53a	4 02p	92/AA808	ExSu	ORD	D- 4/4	1 29p	5 29p	AA469/96	Daily	ORD	LS
6 53a	4 15p	92/AA808	ExSu	ORD	E- 4/5	4 50p	9 14p	AA207/98	Daily	ORD	D
10 50a	8 08p	95/AA434	Daily	ORD	D- 4/4						
10 50a	8 35p	95/AA434	Daily	ORD	E- 4/5						
To BALTIMORE						From BALTIMORE					
6 53a	3 59p	92/AA966	ExSu	ORD	D- 4/4	5 00p	9 14p	AA329/98	Daily	ORD	DS
6 53a	4 16p	92/AA966	ExSu	ORD	E- 4/5						
8 00a	6 33p	90/AA636	Su	ORD	D- 4/4						
8 00a	6 45p	90/AA636	Su	ORD	E- 4/5						
10 50a	10 46p	95/AA342	Daily	ORD	D- 4/4						
10 50a	10 59p	95/AA342	Daily	ORD	E- 4/5						
To BOSTON						From BOSTON					
6 53a	4 26p	92/AA62	ExSu	ORD	D- 4/4	12 46p	5 29p	AA257/96	Daily	ORD	LS
6 53a	4 45p	92/AA62	ExSu	ORD	E- 4/5	4 18p	9 14p	AA581/98	Daily	ORD	DS
8 00a	7 00p	90/AA366	Su	ORD	D- 4/4						
8 00a	7 21p	90/AA366	Su	ORD	E- 4/5						
10 50a	8 32p	95/AA194	Daily	ORD	D- 4/4						
10 50a	8 53p	95/AA194	Daily	ORD	E- 4/5						
To BUFFALO						From BUFFALO					
6 53a	4 01p	92/AA180	ExSu	ORD	D- 4/4	1 40p	5 29p	AA951/96	Daily	ORD	S
6 53a	4 13p	92/AA180	ExSu	ORD	E- 4/5	5 20p	9 14p	AA205/98	Daily	ORD	DS
8 00a	6 24p	90/AA528	Su	ORD	D- 4/4						
8 00a	6 39p	90/AA528	Su	ORD	E- 4/5						
10 50a	10 19p	95/AA462	Daily	ORD	D- 4/4						
10 50a	10 34p	95/AA462	Daily	ORD	E- 4/5						

Ex-Except Tu-Tuesday Th-Thursday Sa-Saturday
Mo-Monday We-Wednesday Fr-Friday Su-Sunday

B-Breakfast L-Lunch D-Dinner S-Snack

Certain Flight Schedules And Equipment Types Subject To Change.

*Night Coach Fare Applies - Subject To Change. Consult Your AirCal Agent For Details.

ORANGE COUNTY (Cont'd)

Leave	Arrive	Flight No.	Freq.	Via/ Stops	Remarks	Leave	Arrive	Flight No.	Freq.	Via/ Stops	Remarks
To NEW YORK NY E - EWR L - LGA						From NEW YORK NY E - EWR L - LGA					
6 53a	4 15pE	92/AA286	ExSu	ORD	D- 4/4	12 30pE	5 29p	AA195/96	ExSu	ORD	LS
6 53a	4 51pL	92/AA176	ExSu	ORD	D- 4/4	12 30pE	5 29p	AA347/96	Su	ORD	LS
6 53a	4 26pE	92/AA286	ExSu	ORD	E- 4/5	1 00pL	5 29p	AA321/96	Daily	ORD	LS
6 53a	5 00pL	92/AA176	ExSu	ORD	E- 4/5	4 00pL	9 14p	AA179/98	Daily	ORD	D
8 00a	5 15pE	90/AA944	Su	ORD	D- 4/4	4 30pE	9 14p	AA307/98	Daily	ORD	D
8 00a	5 51pL	90/AA408	Su	ORD	D- 4/4						
8 00a	5 26pE	90/AA944	Su	ORD	E- 4/5						
8 00a	6 01pL	90/AA408	Su	ORD	E- 4/5						
10 50a	8 15pE	95/AA952	Daily	ORD	D- 4/4						
10 50a	8 50pL	95/AA514	Daily	ORD	D- 4/4						
10 50a	8 25pE	95/AA952	Daily	ORD	E- 4/5						
10 50a	8 57pL	95/AA514	Daily	ORD	E- 4/5						
To PELLSTON ♣						From PELLSTON ♣					
6 53a	4 25p	92/AA4212	ExSu	ORD	B	6 15a	10 29a	AA4207/94	ExSaSu	ORD	B
10 50a	11 15p	95/AA4206	ExSa	ORD	L	12 35p	5 29p	AA4191/96	Su	ORD	S
						4 50p	9 14p	AA4214/98	ExSa	ORD	D
To PHILADELPHIA PA/WILM'TON						From PHILADELPHIA PA/WILM'TON					
6 53a	4 03p	92/AA230	ExSu	ORD	D- 4/4	1 22p	5 29p	AA591/96	Daily	ORD	LS
6 53a	4 16p	92/AA230	ExSu	ORD	E- 4/5	4 53p	9 14p	AA809/98	Daily	ORD	DS
8 00a	6 37p	90/AA668	Su	ORD	D- 4/4						
8 00a	6 56p	90/AA668	Su	ORD	E- 4/5						
10 50a	10 55p	95/AA424	Daily	ORD	D- 4/4						
10 50a	23 04p	95/AA424	Daily	ORD	E- 4/5						
To PITTSBURGH						From PITTSBURGH					
6 53a	3 40p	92/AA582	ExSu	ORD	D- 4/4	5 24p	9 14p	AA947/98	Daily	ORD	DS
6 53a	3 51p	92/AA582	ExSu	ORD	E- 4/5						
8 00a	6 09p	90/AA236	Su	ORD	D- 4/4						
8 00a	6 09p	90/AA236	Su	ORD	E- 4/5						
10 50a	10 12p	95/AA322	Daily	ORD	D- 4/4						
10 50a	10 21p	95/AA322	Daily	ORD	E- 4/5						
To ROCHESTER NY						From ROCHESTER NY					
6 53a	3 53p	92/AA452	ExSu	ORD	D- 4/4	5 05p	9 14p	AA497/98	Daily	ORD	DS
6 53a	3 53p	92/AA452	ExSu	ORD	E- 4/5						
8 00a	6 27p	90/AA276	Su	ORD	D- 4/4						
8 00a	6 40p	90/AA276	Su	ORD	E- 4/5						
10 50a	10 30p	95/AA480	Daily	ORD	D- 4/4						
10 50a	10 46p	95/AA480	Daily	ORD	E- 4/5						
To SAN JUAN PR						From SAN JUAN PR					
6 53a	7 38p	92/AA919	ExSu	ORD	D- 4/4	10 30a	5 29p	AA905/96	Daily	ORD	E- 4/5
6 53a	6 45p	92/AA919	ExSu	ORD	E- 4/5	11 30a	5 29p	AA905/96	Daily	ORD	D- 4/4
10 50a	2 56a	95/AA954	Daily	ORD	D- 4/4						
10 50a	1 56a	95/AA954	Daily	ORD	E- 4/5						
To SOUTH BEND ♣						From SOUTH BEND ♣					
6 53a	3 00p	92/AA4280	ExSu	ORD	D- 4/4	12 00n	5 29p	AA4279/96	Daily	ORD	E- 4/5
6 53a	2 00p	92/AA4280	ExSu	ORD	E- 4/5	1 00p	5 29p	AA4279/96	Daily	ORD	D- 4/4
8 00a	5 55p	90/AA4282	Su	ORD	D- 4/4	2 45p	9 14p	AA4281/98	Daily	ORD	E- 4/5
8 00a	4 55p	90/AA4282	Su	ORD	E- 4/5	3 45p	9 14p	AA4281/98	Daily	ORD	D- 4/4
10 50a	7 04p	95/AA4284	ExSa	ORD	D- 4/4	5 15p	9 14p	AA4283/98	ExSa	ORD	E- 4/5
10 50a	6 04p	95/AA4284	ExSa	ORD	E- 4/5	6 15p	9 14p	AA4283/98	ExSa	ORD	D- 4/4
To SYRACUSE						From SYRACUSE					
6 53a	3 54p	92/AA456	ExSu	ORD	D- 4/4	1 24p	5 29p	AA805/96	Daily	ORD	S
6 53a	4 04p	92/AA456	ExSu	ORD	E- 4/5	4 56p	9 14p	AA637/98	Daily	ORD	D
10 50a	8 12p	95/AA432	Daily	ORD	D- 4/4						
10 50a	8 12p	95/AA432	Daily	ORD	E- 4/5						
To TORONTO						From TORONTO					
6 53a	3 45p	92/AA166	ExSu	ORD	D- 4/4	1 45p	5 29p	AA465/96	Daily	ORD	S
6 53a	3 53p	92/AA166	ExSu	ORD	E- 4/5	5 10p	9 14p	AA301/98	Daily	ORD	DS
8 00a	6 14p	90/AA142	Su	ORD	D- 4/4						
8 00a	6 26p	90/AA142	Su	ORD	E- 4/5						
10 50a	7 51p	95/AA326	Daily	ORD	D- 4/4						
10 50a	8 03p	95/AA326	Daily	ORD	E- 4/5						

Ex-Except Mo-Monday Tu-Tuesday We-Wednesday Th-Thursday Fr-Friday Sa-Saturday Su-Sunday
B-Breakfast L-Lunch D-Dinner S-Snack

Certain Flight Schedules And Equipment Types Subject To Change.
*Night Coach Fare Applies - Subject To Change. Consult Your AirCal Agent For Details.
♣ - American Eagle Service. EWR - Newark. LGA - La Guardia.

ORANGE COUNTY (Cont'd)

Leave	Arrive	Flight No.	Freq.	Via/ Stops	Remarks	Leave	Arrive	Flight No.	Freq.	Via/ Stops	Remarks
To TRAVERSE CITY ♣						From TRAVERSE CITY ♣					
6 53a	3 40p	92/AA4212	ExSu	ORD	B	7 00a	10 29a	AA4207/94	ExSaSu	ORD	B
10 50a	10 30p	95/AA4206	ExSa	ORD	L	1 19p	5 29p	AA4191/96	Daily	ORD	S
						5 35p	9 14p	AA4214/98	ExSa	ORD	D
To WASHINGTON/NATIONAL						From WASHINGTON/NATIONAL					
6 53a	4 00p	92/AA394	ExSu	ORD	BL	1 26p	5 29p	AA391/96	Daily	ORD	LS
8 00a	7 00p	90/AA562	Su	ORD	D- 4/4	4 47p	9 14p	AA411/98	Daily	ORD	D
8 00a	7 09p	90/AA562	Su	ORD	E- 4/5						
10 50a	8 13p	95/AA214	Daily	ORD	D- 3/31						
10 50a	8 13p	95/AA214	ExMoTuSu	ORD	E- 4/1						
10 50a	8 27p	95/AA214	Daily	ORD	E- 4/5						

Flight Schedule Data copyright © 1987 by
Official Airline Guides, Inc., Oak Brook, Illinois, U.S.A.

This Summer, Take a Flying Hop.

There's no time like right now to begin planning your AirCal Happy Hop vacation! AirCal offers a wide range of tour packages to the most exciting destinations in the West. Explore the Alaskan frontier, or play among the pines at Lake Tahoe. Visit Reno, where the fun never stops or take the whole family to Disneyland and Knott's Berry Farm for an unforgettable Southern California treat. Discover the beautiful sights of exciting Vancouver, B.C., host of last year's EXPO. Or, take a quick hop to San Francisco and find out for yourself why it's Everybody's Favorite City!



HAPPY HOP®

Start your AirCal Happy Hop with a trip to your local travel agent, who can best help you plan your vacation. Or call **(800) 854-TOUR**. Either way, start planning now and don't let this summer fly by...

Ex-Except Mo-Monday Tu-Tuesday We-Wednesday Th-Thursday Fr-Friday Sa-Saturday Su-Sunday
B-Breakfast L-Lunch D-Dinner S-Snack

Certain Flight Schedules And Equipment Types Subject To Change.
*Night Coach Fare Applies - Subject To Change. Consult Your AirCal Agent For Details.
♣ - American Eagle Service. E - Effective. D - Discontinued.

AIRCAL INFORMATION

AIRCRAFT

AirCal utilizes Boeing 737-200, Boeing 737-300, or British Aerospace 146-200 jetliners on all flights.

ALCOHOLIC BEVERAGES

Federal Aviation Administration regulations provide that no persons may drink alcoholic beverages aboard an aircraft unless they have been served by the airline, and no such beverage may be served to any person who appears intoxicated.

BAGGAGE

Baggage and Personal Belongings — Liability for checked baggage is limited to \$1,250 per passenger for travel within the United States; \$9.07 per pound for travel to/from Canada; or the actual value, whichever is less. Additional liability coverage may be purchased at check-in-time. AirCal is not responsible for jewelry, cash, camera equipment, electronic equipment, video equipment, negotiable papers, antiques or similar valuable items as described in the Tariff contained in checked or unchecked baggage. These items should be carried personally. The free allowance for travel within the U.S. and to/from Canada, is one large, one medium, and one small piece, the latter which may be carried on board if it will stow properly. Maximum linear dimensions for the three are 62 inches, 55 inches, and 45 inches respectively, none of which may weigh more than 70 pounds. The under seat stowage is 10" x 13" x 19". Baggage should be locked and outside identification must be affixed. Baggage and other hand carried items are subject to security inspection prior to boarding.

Excess Baggage — A charge of \$25.00 each for 1-3 pieces, \$50.00 each for 4-6 pieces and \$80.00 each for more than 6 pieces will be collected for excess baggage over the free allowance stated above. The charge for baggage exceeding the maximum overall dimensions or weight outlined above will be \$25.00 for each piece.

The items listed below are subject to the special charges regardless of the total baggage carried.

Bicycles—\$20.00

Scuba Gear—\$10.00

Surfboards—\$20.00

Household Pets—\$24.00

CHECK-IN TIMES

Make sure that tickets, baggage and other details are in order before checking in. Check in at least 45 minutes before departure (60 minutes between Canada and the U.S.). AirCal will cancel your advanced seat assignment and reservation if you fail to check-in and/or have checked in and are not on-board the aircraft at least ten (10) minutes prior to scheduled departure time of your flight.

CHECKS

AirCal accepts checks for air transportation when presented with one of the major credit cards listed below and a permanent driver's license.

CLAIMS

Damage to or loss of baggage must be reported to AirCal immediately upon termination of your flight.

CREDIT CARDS

AirCal honors American Express, BankAmericard, Barclay Card Chargex, Carte Blanche, Diners Club, MasterCard, UATP and VISA credit cards.

DENIED BOARDING COMPENSATION

Compensation may be paid if the flight for which you have a confirmed reservation is unable to accommodate you and departs without you. Subject to the exceptions described in the tariff, passengers who are eligible for denied boarding compensation will be offered a payment equal to the sum of the face value of their ticket coupons, with a \$200 maximum. However, if we can not arrange alternate transportation for you, the compensation is doubled (\$400 maximum).

ELECTRONIC DEVICES

Federal Aviation regulations prohibit inflight operation of electronic devices other than portable dictation recorders, electronic calculators and games, electronic watches, hearing aids, heart pacemakers and electronic shavers. Other electronic devices (including AM and FM transmitters and receivers, portable telephones, and remote controlled toys) may interfere with communication and navigation systems on the airplane and are therefore prohibited.

INTERNATIONAL TRAVEL

Passengers traveling between U.S. and Canada shall be responsible for obtaining all necessary documents and for complying with the laws of each country. For more information contact a consulate or embassy, or your travel agent.

LOST TICKETS

When a passenger loses his ticket, or a portion of his ticket, he will be required to purchase another ticket at the appropriate fare before transportation between the applicable points will be furnished.

PETS

Dogs and cats require a health certificate no more than thirty days old for interstate travel. Ask about other international requirements or restrictions.

RESPONSIBILITY

AirCal will not be responsible for damages resulting from the failure to depart or arrive at times stated in this timetable nor for errors herein, nor for failure to make connections with flights of other airlines or of this company, nor for cancellation beyond our control when such actions are deemed advisable. The Company has the right to cancel reservations before passage or enroute whenever such action is deemed advisable or necessary. Schedules and fares are subject to change without notice.

RESTRICTED ARTICLES

Baggage may not contain corrosives, explosives or other articles which are easily ignited, matches, flammable liquids, oxidizing materials, poisons, radioactive materials, and compressed gases including aerosol products exceeding 16 ounces per can, 32 ounces per passenger. Plants, fruits, meats and similar agricultural items cannot be taken into the U.S. without permission. Consult the U.S. Department of Agriculture or the nearest U.S. Foreign Office for details.

SMOKING

Every passenger who meets AirCal's check-in requirements has the right to a seat in the non-smoking section.

U.S. CUSTOMS ALLOWANCES

Purchases up to \$300 may be brought back by residents of the U.S. duty free, including one quart alcoholic beverage by adults. Traveler must have been absent from the U.S. at least 48 hours.

RESERVATIONS & INFORMATION

Please call your Travel Agent or the AirCal number nearest you.

Anchorage	(800) 424-7225	Orange County . .	(714) 752-1000
Berkeley	(415) 632-5200	Palo Alto	(415) 591-9611
Beverly Hills	(213) 627-5401	Palm Springs . . .	(800) 424-7225
Burbank	(818) 843-4321	Phoenix	(800) 424-7225
Chicago	(800) 424-7225	Portland	(800) 424-7225
Colton	(714) 825-6900	Reno	(702) 323-6060
Downey	(213) 924-3313	Riverside	(714) 825-6900
El Segundo (LAX Airport) . . .	(213) 615-1191	Sacramento	(916) 446-6181
Eugene	(800) 424-7225	Salem	(800) 424-7225
Fresno	(800) 424-7225	Salinas	(800) 424-7225
Irvine	(714) 752-1000	San Bernardino . .	(714) 825-6900
Lake Tahoe	(800) 424-7225	San Francisco . .	(415) 433-2660
Las Vegas	(800) 424-7225	San Jose	(408) 286-7870
Long Beach	(213) 924-3313	San Mateo (SFO Airport) . . .	(415) 591-9611
Los Angeles	(213) 627-5401	Santa Ana	(714) 752-1000
Milbrae	(415) 872-1444	Santa Monica . . .	(213) 615-1191
Monterey	(800) 424-7225	Seattle	(800) 424-7225
Newport Beach . .	(714) 752-1000	Tacoma	(800) 424-7225
Oakland	(415) 632-5200	Vancouver, BC . .	(800) 424-7225
Ontario	(714) 983-2743	Vancouver, WA . .	(800) 424-7225

For Areas Not Listed Call (800) 424-7225 or (800) 4-AIRCAL

INTERNATIONAL OFFICES

Japan Japan Center Co. Ltd. 1-3-5 Daimon Shibaminato-Kutokyo Telephone (03) 434-6298	Stockholm, Sweden Telephone 20-04-05
London, England 1 Lumley Street 5th Floor Mayfair, London W1Y 1TW Telephone (01) 409-0814	Frankfurt, Germany Unternainanlage 5 6000 Frankfurt - M Germany Telephone (06 9) 23 03 04
Amsterdam, Netherlands Telephone 47-31-73	France/Belgium 17 Avenue Gourgaud 75017 Paris France Telephone (1) 42-27-00-07
Denmark; Norway Telephone 430-0035	

CITY/AIRPORT DECODE

Anchorage	ANC	Portland	PDX
Burbank	BUR	Reno	RNO
Chicago	ORD	Sacramento	SMF
Lake Tahoe	TVL	San Diego	SAN
Los Angeles	LAX	San Francisco	SFO
Oakland	OAK	San Jose	SJC
Ontario	ONT	Seattle	SEA
Orange County	SNÁ	Vancouver, BC	YVR
Palm Springs	PSP		

AirCal General Offices
3636 Birch Street
Newport Beach, CA 92660

Timetable printed in Canada