

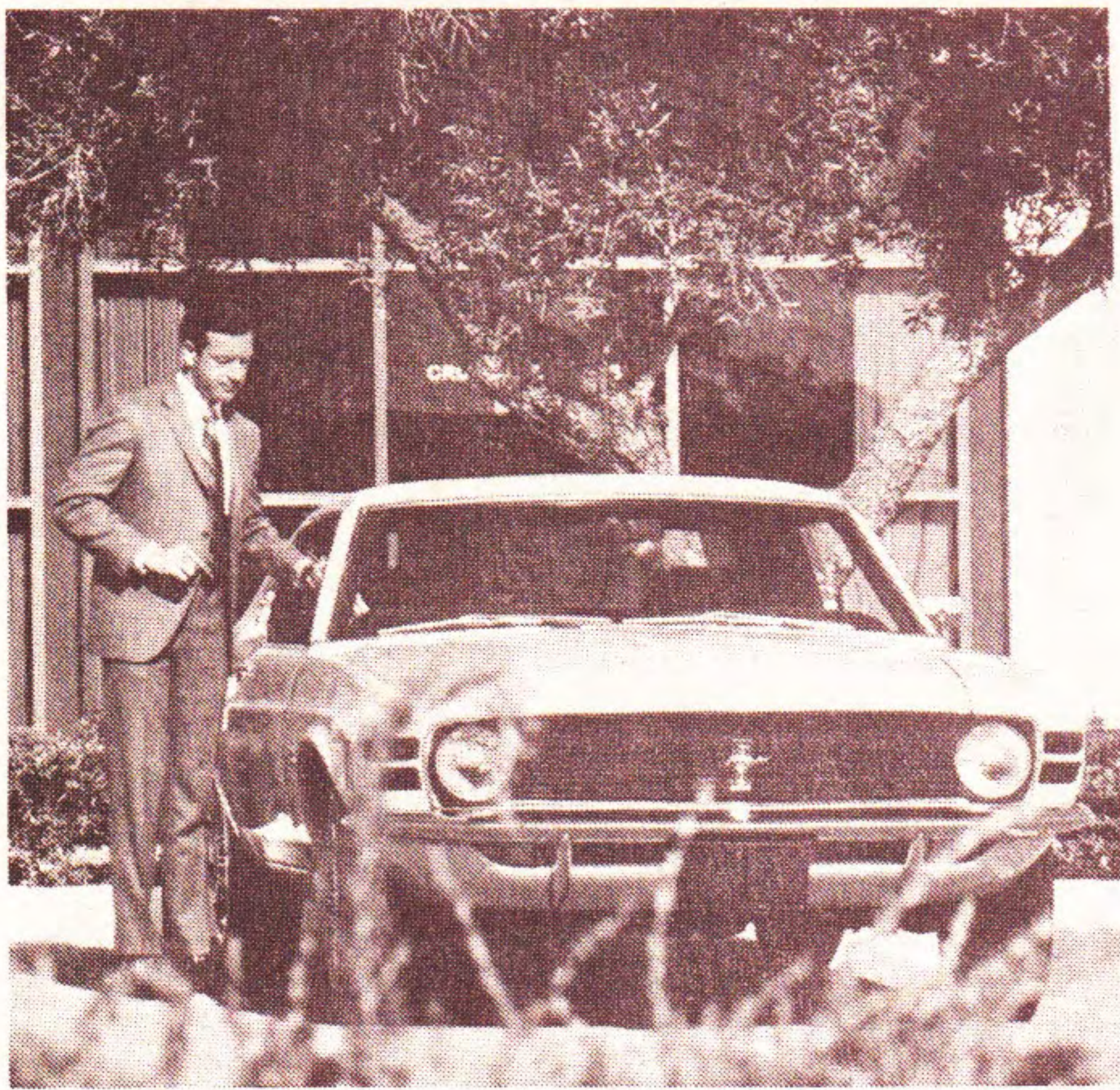
**AIR MIDWEST**  
*System* **TIMETABLE**

*Serving the  
Heartlands  
of America*



# Hertz

Renting you a good, clean Ford is just where we begin.



You don't just rent a car. You rent a company.

69232

**AIR MIDWEST, INC.**  
SUITE 203E TERMINAL BLDG.  
WICHITA MUNICIPAL AIRPORT  
WICHITA, KANSAS 67203

## *air* **MIDWEST** *System* **TIMETABLE**

*Serving the  
Heartlands  
of America*



**AIR MIDWEST  
PASSENGER INFORMATION**

**KANSAS CITY PASSENGERS** — Air Midwest operates from the Air Commuter Ticket Counter in the South Baggage Claim Lobby of the Terminal Building.

**DENVER PASSENGERS** — The Air Midwest Ticket Counter is conveniently located in the lower level Baggage Claim Area.

**EQUIPMENT DESIGNATIONS** — TC Cessna Twin Engine Turbo-charged, nine-passenger 402; B9 Beech 99A, fifteen passenger Jet-Prop.

**RECONFIRMATION** — Please reconfirm your reservations after a stop over of more than twelve hours. Reconfirmation is necessary at least six hours before departure in order to assure your reservations.

**CHECK IN TIME FOR FLIGHTS** — In the interest of on-time service to all passengers reservations not claimed ten minutes prior to the scheduled flight time are subject to cancellation.

**BAGGAGE** — Each passenger will be allowed two (2) standard size bags and one (1) "carry-on piece" such as an attache case, hang-up bag, or ladies cosmetic case. Additional baggage per passenger will be charged at the following rate based on each passenger's total fare:

Fare	Per Bag
\$ 25.00 or under	\$2.00
\$ 25.01 to \$ 50.00	\$3.00
\$ 50.01 to \$120.00	\$4.00
\$120.01 to \$200.00	\$5.00
Over \$200.00	\$6.00

**CREDIT CARDS** — BankAmericard, Master Charge, American Express, and Dinner's Club.

**RESPONSIBILITY** — Air Midwest reserves the right to cancel or change schedules without notice. Safety is our primary consideration. Schedules shown are based on expected flying times. Because weather and other factors may affect operating conditions, departures and arrivals cannot be absolutely guaranteed.

**RESERVATIONS** — Reservations are not definite until tickets are purchased. Passage may be refused to any person when necessary to comply with Government regulations, tariff rules, or for reasons beyond the control of Air Midwest.

**AIR MIDWEST DISCOUNT FARES**

**CHILDREN'S FARES** — (not applicable to Family Plan travel)

(A) One child under 2 years not occupying a seat carried free with each accompanying fare-paying adult passenger.

(B) Children under 2 years occupying a seat, or over 2 years occupying a seat and under 12 years, or more than one child accompanying a passenger are each charged one-half normal adult fare.

*(continued on next panel)*

**AIR MIDWEST DISCOUNTS FARES (Continued)**

(C) Children under 5 years must be accompanied by a passenger of at least 12 years of age paying full fare. Children between 7 and 11 may travel alone only by prior arrangement. Unaccompanied children between the ages of 7 and 11 will be charged the full adult fare.

**FAMILY PLAN** — (Family discounts do not apply to Excursion fares, youth fare or children's fares) Family Plan good all hours of all days - confirmed space.

Head of family	Full Fare
Spouse (or one child 12 thru 21 yrs.)	75%
All other family members 2 thru 21 yrs.	50%

**YOUTH FARE (YF)** — Applies to passengers from at least 12 years of age but less than 22 years of age, who hold an Air Midwest Youth Club Membership Card, which may be purchased at any Air Midwest ticket office, good for one (1) year. The card holder is allowed to fly for approximately 50% of full fare on any Air Midwest flight on Stand-By Basis.

**30-DAY ROUND TRIP FARE (DA-30)** — (Does not apply to family plan) 25% less than full fare. Applies only on round-trip fares. Tickets must be purchased from point of origin and are valid for 30 days. Return travel from the outward destination may not commence prior to seven (7) days from the date of departure. Good any time of day.

**MILITARY FARE (M)** — 25% less than full fare. Applies at all times — positive space confirmed. For Military on active duty in uniform with proof of authorized leave.

**MINIMUM FARE** — The minimum fare for any ticket issue on the Air Midwest system will be \$10.00 one way or \$20.00 round trip. This applies to all discount fares and Military fares.

**AIR MIDWEST AIR FREIGHT  
Carried on All Flights**

**LOCAL RATES** — The first 100 pounds is \$8.00; each additional pound 8 cents.

**SMALL PARCEL RATES** — Packages weighing twenty-five (25) pounds and one cubic foot are carried on a \$6.00 minimum charge.

**WEIGHT LIMITATIONS** — Pieces weighing up to 150 pounds will be excepted. Shipments over 150 pounds will require advance arrangements.

**DECLARED VALUE** — You are allowed \$50.00 free valuation on shipments weighing up to 100 pounds and \$.50 per pound on shipments over 100 pounds. Additional coverage may be purchased at \$.10 per 100 pounds. Additional evaluations are limited to \$2,500.00 per shipment without prior arrangement.

**PREPAID OR COLLECT CHARGES** — Shipments can be made prepaid or collect and credit arrangements can be made by contacting your local Air Midwest office.

# **air MIDWEST**

AIRLINE TICKETING AND RESERVATION CODE "ZV"

**FROM DENVER, COLORADO — M.S.T.**  
For Reservations and Air Cargo — (303) 398-5360

## **TO DODGE CITY, KANSAS**

Fare: OW \$35.00; RT \$70.00; M \$27.00; YF \$10.00; DA/30 \$52.00

Flight	Depart	Arrive	Stops	Freq.	Equip.
904	9:10A	11:50A	1	X67	B9
908	7:00P	9:40P	1	X6	B9
966	2:30P	5:05P	1	6 only	B9

## **TO GARDEN CITY, KANSAS**

Fare: OW \$33.00; RT \$66.00; M \$25.00; YF \$17.00; DA/30 \$50.00

Flight	Depart	Arrive	Stops	Freq.	Equip.
904	9:10A	11:25P	0	X67	B9
908	7:00P	9:15P	0	X6	B9
966	2:30P	4:40P	0	6 only	B9

## **TO GREAT BEND, KANSAS**

Fare: OW \$38.00; RT \$76.00; M \$30.00; YF \$19.00; DA/30 \$57.00

Flight	Depart	Arrive	Stops	Freq.	Equip.
904	9:10A	12:25P	2	X67	B9
906	12:10P	3:00P	1	X67	B9
908	7:00P	10:15P	2	X6	B9
966	2:30P	5:40P	2	6 only	B9

## **TO HAYS, KANSAS**

Fare: OW \$35.00; RT \$70.00; M \$27.00; YF \$18.00; DA/30 \$52.00

Flight	Depart	Arrive	Stops	Freq.	Equip.
906	12:10P	2:30P	0	X67	B9

## **TO HUTCHINSON, KANSAS**

Fare: OW \$45.00; RT \$90.00; M \$34.00; YF \$23.00; DA/30 \$68.00

Flight	Depart	Arrive	Stops	Freq.	Equip.
904	9:10A	12:55P	3	X67	B9
906	12:10P	3:35P	2	X67	B9
908	7:00P	10:45P	3	X6	B9
966	2:30P	6:10P	3	6 only	B9

## **TO KANSAS CITY, MISSOURI**

Fare: OW \$61.00; RT \$122.00; M \$46.00; YF \$31.00; DA/30 \$92.00

Flight	Depart	Arrive	Stops	Freq.	Equip.
904	9:10A	2:30P	5	X67	B9
906	12:10P	4:45P	4	X67	B9

## **TO WICHITA, KANSAS**

Fare: OW \$52.00; RT \$104.00; M \$39.00; YF \$26.00; DA/30 \$78.00

Flight	Depart	Arrive	Stops	Freq.	Equip.
904	9:10A	1:20P	4	X67	B9
908	7:00P	11:10P	4	X6	B9
966	2:30P	6:35P	4	6 only	B9

# **air MIDWEST**

SCHEDULES EFFECTIVE MARCH 1, 1971

**FROM DODGE CITY, KANSAS — C.S.T.**  
For Reservations and Air Cargo — (316) 227-8679

## **TO WICHITA, KANSAS**

Fare: OW \$21.00; RT \$42.00; M \$16.00; YF \$11.00; DA/30 \$32.00

Flight	Depart	Arrive	Stops	Freq.	Equip.
942	6:30A	7:15A	0	X7	TC
904	12:00N	1:20P	2	X67	B9
940	5:30P	6:15P	0	X67	TC
908	9:50P	11:10P	2	X6	B9
966	5:15P	6:35P	2	6 only	B9
974	12:00N	1:20P	2	7 only	B9

## **TO KANSAS CITY, MISSOURI**

Fare: OW \$37.00; RT \$74.00; M \$29.00; YF \$19.00; DA/30 \$56.00

Flight	Depart	Arrive	Stops	Freq.	Equip.
942	6:30A	8:20A	1	X7	TC-B9
904	12:00N	2:30P	3	X67	B9
940	5:30P	7:30P	1	X67	TC
974	12:00N	2:30P	3	7 only	B9

## **TO DENVER, COLORADO**

Fare: OW \$35.00; RT \$70.00; M \$27.00; YF \$18.00; DA/30 \$52.00

Flight	Depart	Arrive	Stops	Freq.	Equip.
901	8:05A	8:45A	1	X67	B9
905	5:50P	6:30P	1	X6	B9
963	12:20P	1:00P	1	6 only	B9

## **TO PUEBLO, COLORADO**

Fare: OW \$

Flight	Depart	Arrive	Stops	Freq.	Equip.
941	10:50P	11:20P	1	X67	TC

## **AIR YOUR FREIGHT**

### **VIA**

# **air MIDWEST**

# **air MIDWEST**

AIRLINE TICKETING AND RESERVATION CODE "ZV"

**FROM GARDEN CITY, KANSAS — C.S.T.**  
For Reservations and Air Cargo — (316) 276-7331

## **TO WICHITA, KANSAS**

Fare: OW \$27.00; RT \$54.00; M \$21.00; YF \$14.00; DA/30 \$42.00

Flight	Depart	Arrive	Stops	Freq.	Equip.
942	6:00A	7:15A	1	X7	TC
904	11:35A	1:20P	3	X67	B9
940	5:00P	6:15P	1	X67	TC
908	9:25P	11:10P	3	X6	B9
966	4:50P	6:35P	3	6 only	B9

## **TO KANSAS CITY, MISSOURI**

Fare: OW \$38.00; RT \$76.00; M \$30.00; YF \$19.00; DA/30 \$57.00

Flight	Depart	Arrive	Stops	Freq.	Equip.
942	6:00A	8:20A	2	X7	TC-B9
904	11:35A	2:30P	4	X67	B9
940	5:00P	7:30P	2	X67	TC

## **TO DENVER, COLORADO**

Fare: OW \$33.00; RT \$66.00; M \$35.00; YF \$17.00; DA/30 \$50.00

Flight	Depart	Arrive	Stops	Freq.	Equip.
901	8:30A	8:45A	0	X67	B9
905	6:15P	6:30P	0	X6	B9
963	12:45P	1:00P	0	6 only	B9

## **TO PUEBLO, COLORADO**

Fare: OW \$35.00; RT \$70.00; M \$27.00; YF \$18.00; DA/30 \$52.00

Flight	Depart	Arrive	Stops	Freq.	Equip.
941	11:15P	11:20P	0	X67	TC

**GO TO DENVER  
TWICE A DAY**

**FROM**

**DODGE CITY AND  
GARDEN CITY**

# **air MIDWEST**

SCHEDULES EFFECTIVE MARCH 1, 1971

**FROM GREAT BEND, KANSAS — C.S.T.**  
For Reservations and Air Cargo — (316) 792-4900

## **TO WICHITA, KANSAS**

Fare: OW \$18.00; RT \$36.00; M \$15.00; YF \$10.00; DA/30 \$27.00

Flight	Depart	Arrive	Stops	Freq.	Equip.
902	6:20A	7:05A	1	X7	B9
904	12:35P	1:20P	1	X67	B9
910	7:30P	8:15P	1	X67	B9
908	10:25P	11:10P	1	X6	B9
966	5:50P	6:35P	1	6 only	B9
974	12:35P	1:20P	1	7 only	B9

## **TO KANSAS CITY, MISSOURI**

Fare: OW \$33.00; RT \$66.00; M \$25.00; YF \$17.00; DA/30 \$50.00

Flight	Depart	Arrive	Stops	Freq.	Equip.
902	6:20A	8:20A	2	X7	B9
904	12:35P	2:30P	2	X67	B9
906	3:15P	4:45P	1	X67	B9
910	7:30P	9:25P	2	X67	B9
974	12:35P	2:30P	2	7 only	B9

## **TO DENVER, COLORADO**

Fare: OW \$38.00; RT \$76.00; M \$30.00; YF \$19.00; DA/30 \$57.00

Flight	Depart	Arrive	Stops	Freq.	Equip.
901	7:30A	8:45A	2	X67	B9
903	11:00A	11:45A	1	X67	B9
905	5:15P	6:30P	2	X6	B9
963	11:45A	1:00P	2	6 only	B9

**FROM HAYS, KANSAS — C.S.T.**  
For Reservations and Air Cargo (913) 625-3311

## **TO WICHITA, KANSAS**

Fare: OW \$21.00; RT \$42.00; M \$15.00; YF \$11.00; DA/30 \$32.00

Flight	Depart	Arrive	Stops	Freq.	Equip.
902	6:00A	7:05A	2	X7	B9

## **TO KANSAS CITY, MISSOURI**

Fare: OW \$33.00; RT \$66.00; M \$25.00; YF \$17.00; DA/30 \$50.00

Flight	Depart	Arrive	Stops	Freq.	Equip.
902	6:00A	8:20A	3	X7	B9
906	2:40P	4:45P	2	X67	B9

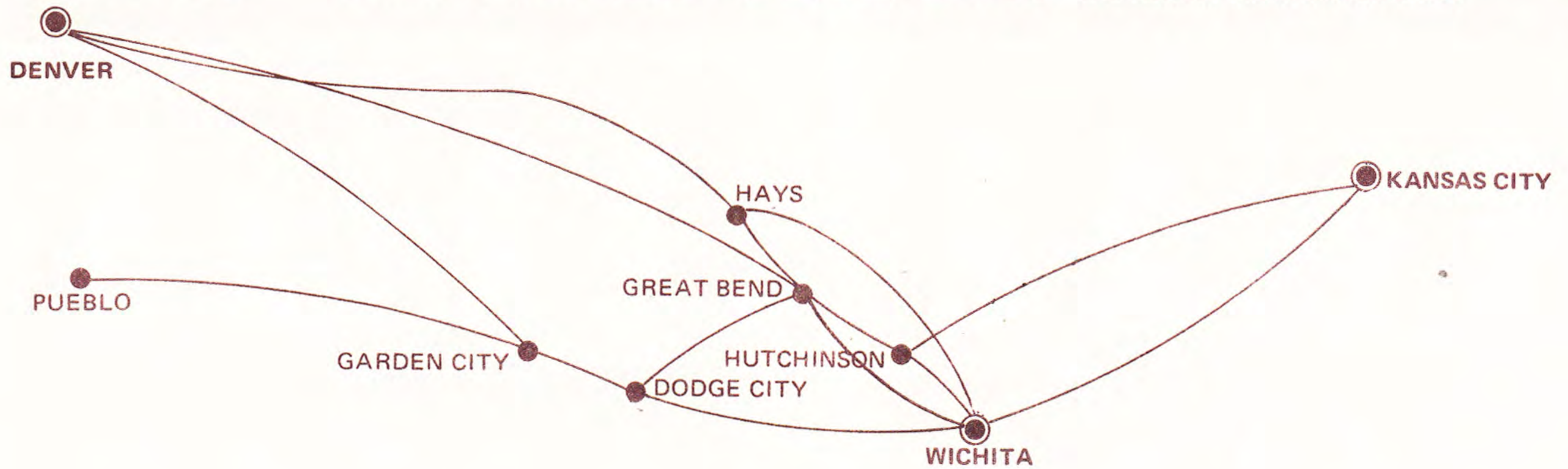
## **TO DENVER, COLORADO**

Fare: OW \$35.00; RT \$70.00; M \$27.00; YF \$18.00; DA/30 \$52.00

Flight	Depart	Arrive	Stops	Freq.	Equip.
903	11:25A	11:45A	0	X67	B9

# FLY air MIDWEST...

For travel between intermediate cities, contact your local Air Midwest ticket office.



## FOR RESERVATIONS & INFORMATION CALL:

TOLL FREE IN KANSAS (800) 362-2070	DODGE CITY ..... (316) 227-8679	HUTCHINSON ..... (316) 663-2922
WICHITA ..... (316) 942-1223	GARDEN CITY ..... (316) 276-7331	KANSAS CITY, MO. .. (816) 221-0220
DENVER ..... (303) 398-5360	GREAT BEND ..... (316) 792-4900	PUEBLO ..... (316) 942-1223
	HAYS ..... (913) 625-3311	



# AIR MIDWEST

AIRLINE TICKETING AND RESERVATION CODE "ZV"

**FROM HUTCHINSON, KANSAS — C.S.T.**  
For Reservations and Air Cargo — (316) 663-2922

## TO WICHITA, KANSAS

Fare: OW \$13.00; RT \$26.00; M \$10.00; YF \$10.00; DA/30 \$30.00

Flight	Depart	Arrive	Stops	Freq.	Equip.
902	6:50A	7:05A	0	X7	B9
904	1:05P	1:20P	0	X67	B9
910	8:00P	8:15P	0	X67	B9
908	10:55P	11:10P	0	X6	B9
966	6:20P	6:35P	0	6 only	B9
974	1:05P	1:20P	0	7 only	B9

## TO KANSAS CITY, MISSOURI

Fare: OW \$24.00; RT \$48.00; M \$18.00; YF \$12.00; DA/30 \$36.00

Flight	Depart	Arrive	Stops	Freq.	Equip.
902	6:50A	8:20A	1	X7	B9
904	1:05P	2:30P	1	X67	B9
906	3:45P	4:45P	0	X67	B9
910	8:00P	9:25P	1	X67	B9
974	1:05P	2:30P	1	7 only	B9

## TO DENVER, COLORADO

Fare: OW \$45.00; RT \$90.00; M \$34.00; YF \$23.00; DA/30 \$68.00

Flight	Depart	Arrive	Stops	Freq.	Equip.
901	7:00A	8:45A	3	X67	B9
903	10:25A	11:45A	2	X67	B9
905	4:40P	6:30P	3	X67	B9
963	11:10A	1:00P	3	6 only	B9

**FROM KANSAS CITY, MISSOURI — C.S.T.**  
For Reservations and Air Cargo — (816) 221-0220

## TO DENVER, COLORADO

Fare: OW \$61.00; RT \$122.00; M \$46.00; YF \$31.00; DA/30 \$92.00

Flight	Depart	Arrive	Stops	Freq.	Equip.
903	8:45A	11:45A	4	X67	B9
905	3:00P	6:30P	5	X6	B9
963	9:30A	1:00P	5	6 only	B9

## TO DODGE CITY, KANSAS

Fare: OW \$37.00; RT \$74.00; M \$29.00; YF \$19.00; DA/30 \$56.00

Flight	Depart	Arrive	Stops	Freq.	Equip.
943	8:45A	10:30A	1	X67	B9/TC
905	3:00P	5:40P	3	X6	B9
941	8:25P	10:30P	1	X67	TC
963	9:30A	12:10P	3	6 only	B9
949	10:00P	12:00M	1	7 only	TC

# AIR MIDWEST

SCHEDULES EFFECTIVE MARCH 1, 1971

**FROM KANSAS CITY, MISSOURI (Continued)**

## TO GARDEN CITY, KANSAS

Fare: OW \$38.00; RT \$76.00; M \$30.00; YF \$19.00; DA/30 \$57.00

Flight	Depart	Arrive	Stops	Freq.	Equip.
943	8:45A	10:55A	2	X67	B9/TC
905	3:00P	6:05P	4	X6	B9
941	8:25P	11:10P	2	X67	TC
963	9:30A	12:35P	4	6 only	B9
949	10:00P	12:25A	2	7 only	TC

## TO GREAT BEND, KANSAS

Fare: OW \$33.00; RT \$66.00; M \$25.00; YF \$17.00; DA/30 \$50.00

Flight	Depart	Arrive	Stops	Freq.	Equip.
903	8:45A	10:45A	2	X67	B9
905	3:00P	5:00P	2	X6	B9
907	5:15P	7:15P	2	X67	B9
909	10:00P	12:00M	2	X6	B9
963	9:30A	11:30A	2	6 only	B9

## TO HAYS, KANSAS

Fare: OW \$33.00; RT \$66.00; M \$25.00; YF \$17.00; DA/30 \$50.00

Flight	Depart	Arrive	Stops	Freq.	Equip.
903	8:45A	11:15A	3	X67	B9
909	10:00P	12:25A	3	X6	B9

## TO HUTCHINSON, KANSAS

Fare: OW \$24.00; RT \$48.00; M \$18.00; YF \$12.00; DA/30 \$36.00

Flight	Depart	Arrive	Stops	Freq.	Equip.
903	8:45A	10:15A	1	X67	B9
905	3:00P	4:30P	1	X6	B9
907	5:15P	6:45P	1	X67	B9
909	10:00P	11:30P	1	X6	B9
963	9:30A	11:00A	1	6 only	B9

## TO WICHITA, KANSAS

Fare: OW \$24.00; RT \$48.00; M \$18.00; YF \$12.00; DA/30 \$36.00

Flight	Depart	Arrive	Stops	Freq.	Equip.
903	8:45A	9:40A	0	X67	B9
905	3:00P	3:55P	0	X6	B9
907	5:15P	6:10P	0	X67	B9
941	8:25P	9:25P	0	X67	TC
909	10:00P	10:55P	0	X6	B9
963	9:30A	10:25A	0	6 only	B9

# **air MIDWEST**

AIRLINE TICKETING AND RESERVATION CODE "ZV"

**FROM PUEBLO, COLORADO — M.S.T.**  
For Reservations and Air Cargo — (316) 942-1223

## **TO DODGE CITY, KANSAS**

Fare: OW \$35.00; RT \$70.00; M \$27.00; YF \$18.00; DA/30 \$52.00

Flight	Depart	Arrive	Stops	Freq.	Equip.
912	12:40A	3:10A	X1	X7-1	TC

## **TO GARDEN CITY, KANSAS**

Fare: OW \$35.00; RT \$70.00; M \$27.00; YF \$18.00; DA/30 \$52.00

Flight	Depart	Arrive	Stops	Freq.	Equip.
912	12:40A	2:50A	0	X7-1	TC

## **TO WICHITA, KANSAS**

Fare: OW \$38.00; RT \$76.00; M \$30.00; YF \$19.00; DA/30 \$57.00

Flight	Depart	Arrive	Stops	Freq.	Equip.
912/942	12:40A	7:15A	2	X7-1	TC

**FROM WICHITA, KANSAS — C.S.T.**  
For Reservations and Air Cargo — (316) 942-1223

## **TO DENVER, COLORADO**

Fare: OW \$52.00; RT \$104.00; M \$39.00; YF \$26.00; DA/30 \$78.00

Flight	Depart	Arrive	Stops	Freq.	Equip.
901	6:30A	8:45A	4	X67	B9
903	10:00A	11:45A	3	X67	B9
905	4:15P	6:30P	4	X6	B9
963	10:45A	1:00P	4	6 only	B9

## **TO DODGE CITY, KANSAS**

Fare: OW \$21.00; RT \$42.00; M \$16.00; YF \$11.00; DA/30 \$32.00

Flight	Depart	Arrive	Stops	Freq.	Equip.
901	6:30A	7:55A	2	X67	B9
943	9:45A	10:30A	0	X67	TC
905	4:15P	5:40P	2	X6	B9
941	9:45P	10:30P	0	X67	TC
963	10:45A	12:10P	2	6 only	B9
949	11:10P	12:00M	0	7 only	TC
973	10:00A	11:25A	2	7 only	B9

## **TO GARDEN CITY, KANSAS**

Fare: OW \$27.00; RT \$54.00; M \$21.00; YF \$14.00; DA/30 \$42.00

Flight	Depart	Arrive	Stops	Freq.	Equip.
901	6:30A	8:20A	3	X67	B9
943	9:45A	11:00A	1	X67	TC
905	4:15P	6:05P	3	X6	B9
941	9:45P	11:00P	1	X67	TC
963	10:45A	12:35P	3	6 only	B9
949	11:10P	12:25P	1	7 only	TC

# **air MIDWEST**

SCHEDULES EFFECTIVE MARCH 1, 1971

**FROM WICHITA, KANSAS (Continued)**

## **TO GREAT BEND, KANSAS**

Fare: OW \$18.00; RT \$36.00; M \$15.00; YF \$10.00; DA/30 \$27.00

Flight	Depart	Arrive	Stops	Freq.	Equip.
901	6:30A	7:20A	1	X67	B9
903	10:00A	10:45A	1	X67	B9
905	4:15P	5:00P	1	X6	B9
907	6:30P	7:15P	1	X67	B9
909	11:15P	12:00M	1	X6	B9
963	10:45A	11:30A	1	6 only	B9
973	10:00A	10:45A	1	7 only	B9

## **TO HAYS, KANSAS**

Fare: OW \$21.00; RT \$42.00; M \$16.00; YF \$11.00; DA/30 \$32.00

Flight	Depart	Arrive	Stops	Freq.	Equip.
903	10:00A	11:15A	2	X67	B9
909	11:15P	12:25A	2	X6	B9

## **TO HUTCHINSON, KANSAS**

Fare: OW \$13.00; RT \$26.00; M \$10.00; YF \$10.00; DA/30 \$20.00

Flight	Depart	Arrive	Stops	Freq.	Equip.
901	6:30A	6:50A	0	X67	B9
903	10:00A	10:15A	0	X67	B9
905	4:15P	4:30P	0	X6	B9
907	6:30P	6:45P	0	X67	B9
909	11:15P	11:30P	0	X6	B9
963	10:45A	11:00A	0	6 only	B9
973	10:00A	10:15A	0	7 only	B9

## **TO KANSAS CITY, MISSOURI**

Fare: OW \$24.00; RT \$48.00; M \$18.00; YF \$12.00; DA/30 \$36.00

Flight	Depart	Arrive	Stops	Freq.	Equip.
902	7:25A	8:20A	0	X7	B9
904	1:35P	2:30P	0	X67	B9
940	6:30P	7:30P	0	X67	CT
910	8:30P	9:25P	0	X67	B9
970	6:30P	7:30	0	7 only	TC
974	1:35P	2:30P	0	7 only	B9

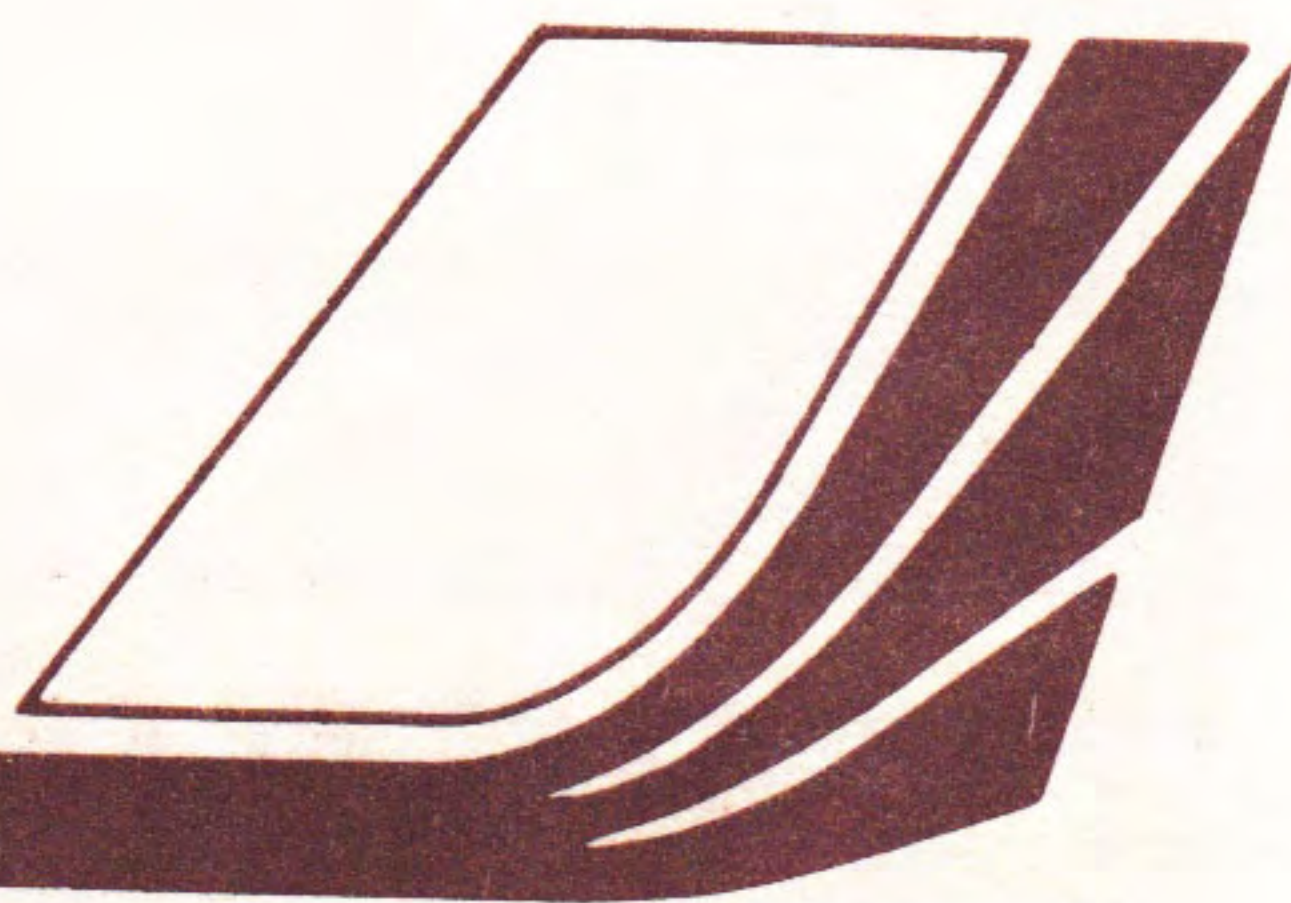
## **TO PUEBLO, COLORADO**

Fare: OW \$38.00; RT \$76.00; M \$30.00; YF \$19.00; DA/30 \$57.00

Flight	Depart	Arrive	Stops	Freq.	Equip.
941	9:45P	11:20P	2	X67	TC



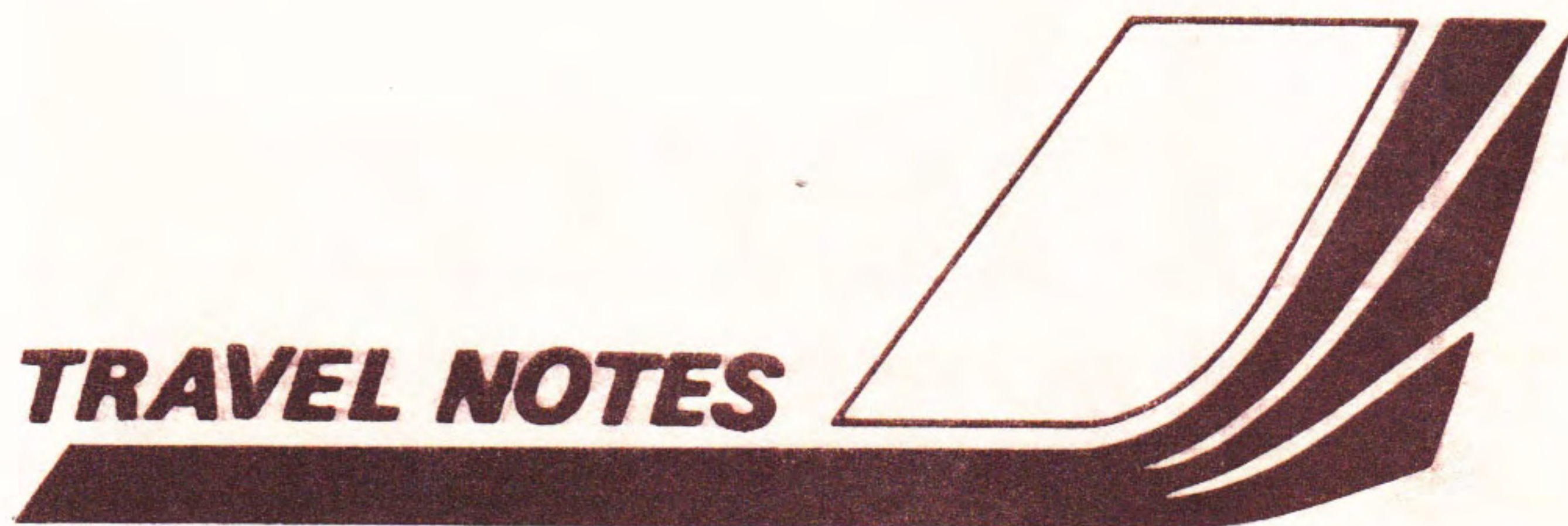
**TRAVEL NOTES**



**am**

For travel between intermediate cities, contact your local Air Midwest ticket office.

**TRAVEL NOTES**



**am**

For travel between intermediate cities, contact your local Air Midwest ticket office.