

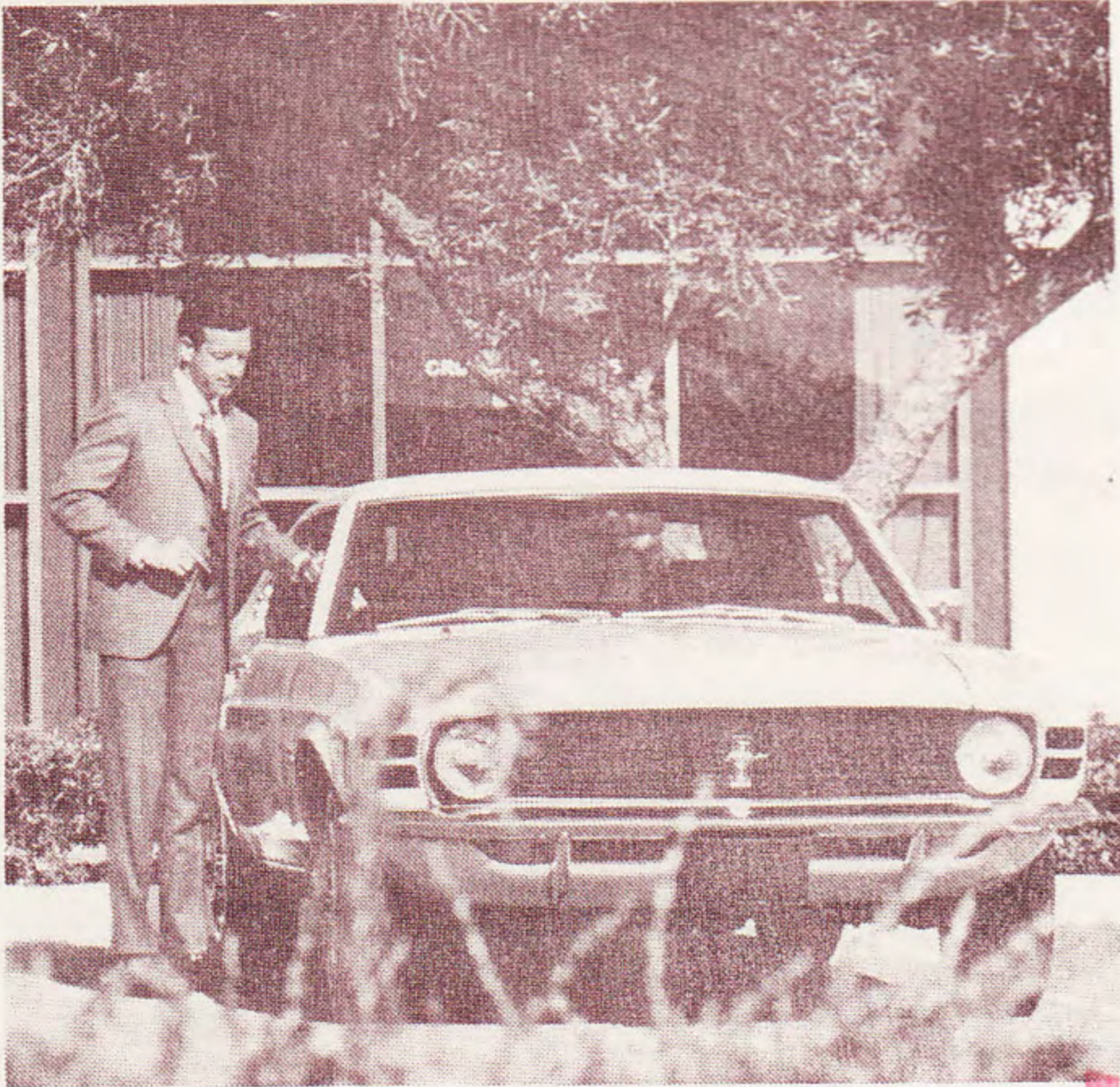
**air MIDWEST**  
*System* **TIMETABLE**

*Serving the  
Heartlands  
of America*



# Hertz

Renting you a good, clean Ford is just where we begin.



You don't just rent a car. You rent a company.

69232

*J. Fricktanaki  
P.O. Box 171  
Santa Barbara, Cal.  
93102*

**FLY**  
**air midwest**  
SUITE 203E TERMINAL BLDG.  
WICHITA MUNICIPAL AIRPORT  
WICHITA, KANSAS 67203  
KANS.  
PER METER  
1083843  
U.S. POSTAGE  
0.08

## *air* MIDWEST System **TIMETABLE**

*Serving the  
Heartlands  
of America*



**AIR MIDWEST  
PASSENGER INFORMATION**

**KANSAS CITY PASSENGERS** — Air Midwest operates from the Air Commuter Ticket Counter in the South Baggage Claim Lobby of the Terminal Building.

**DENVER PASSENGERS** — The Air Midwest Ticket Counter is conveniently located in the lower level Baggage Claim Area.

**EQUIPMENT DESIGNATIONS** — TC Cessna Twin Engine Turbo-charged, nine-passenger 402; B9 Beech 99A, fifteen passenger Jet-Prop.

**RECONFIRMATION** — Please reconfirm your reservations after a stop over of more than twelve hours. Reconfirmation is necessary at least six hours before departure in order to assure your reservations.

**CHECK IN TIME FOR FLIGHTS** — In the interest of on-time service to all passengers reservations not claimed ten minutes prior to the scheduled flight time are subject to cancellation.

**BAGGAGE** — Each passenger will be allowed two (2) standard size bags and one (1) "carry-on piece" such as an attache case, hang-up bag, or ladies cosmetic case. Additional baggage per passenger will be charged at the following rate based on each passenger's total fare:

| Fare                 | Per Bag |
|----------------------|---------|
| \$ 25.00 or under    | \$2.00  |
| \$ 25.01 to \$ 50.00 | \$3.00  |
| \$ 50.01 to \$120.00 | \$4.00  |
| \$120.01 to \$200.00 | \$5.00  |
| Over \$200.00        | \$6.00  |

**CREDIT CARDS** — BankAmericard, Master Charge, American Express, and Dinner's Club.

**RESPONSIBILITY** — Air Midwest reserves the right to cancel or change schedules without notice. Safety is our primary consideration. Schedules shown are based on expected flying times. Because weather and other factors may affect operating conditions, departures and arrivals cannot be absolutely guaranteed.

**RESERVATIONS** — Reservations are not definite until tickets are purchased. Passage may be refused to any person when necessary to comply with Government regulations, tariff rules, or for reasons beyond the control of Air Midwest.

**AIR MIDWEST DISCOUNT FARES**

**CHILDREN'S FARES** — (not applicable to Family Plan travel)

(A) One child under 2 years not occupying a seat carried free with each accompanying fare-paying adult passenger.

(B) Children under 2 years occupying a seat, or over 2 years occupying a seat and under 12 years, or more than one child accompanying a passenger are each charged one-half normal adult fare.

*(continued on next panel)*

**AIR MIDWEST DISCOUNTS FARES (Continued)**

(C) Children under 5 years must be accompanied by a passenger of at least 12 years of age paying full fare. Children between 7 and 11 may travel alone only by prior arrangement. Unaccompanied children between the ages of 7 and 11 will be charged the full adult fare.

**FAMILY PLAN** — (Family discounts do not apply to Excursion fares, youth fare or children's fares) Family Plan good all hours of all days - confirmed space.

|   |           |
|---|-----------|
| Head of family                          | Full Fare |
| Spouse (or one child 12 thru 21 yrs.)   | 75%       |
| All other family members 2 thru 21 yrs. | 50%       |

**YOUTH FARE (YF)** — Applies to passengers from at least 12 years of age but less than 22 years of age, who hold an Air Midwest Youth Club Membership Card, which may be purchased at any Air Midwest ticket office, good for one (1) year. The card holder is allowed to fly for approximately 50% of full fare on any Air Midwest flight on Stand-By Basis.

**30-DAY ROUND TRIP FARE (DA-30)** — (Does not apply to family plan) 25% less than full fare. Applies only on round-trip fares. Tickets must be purchased from point of origin and are valid for 30 days. Return travel from the outward destination may not commence prior to seven (7) days from the date of departure. Good any time of day.

**MILITARY FARE (M)** — 25% less than full fare. Applies at all times — positive space confirmed. For Military on active duty in uniform with proof of authorized leave.

**MINIMUM FARE** — The minimum fare for any ticket issue on the Air Midwest system will be \$10.00 one way or \$20.00 round trip. This applies to all discount fares and Military fares.

**AIR MIDWEST AIR FREIGHT  
Carried on All Flights**

**LOCAL RATES** — The first 100 pounds is \$8.00; each additional pound 8 cents.

**SMALL PARCEL RATES** — Packages weighing twenty-five (25) pounds and one cubic foot are carried on a \$6.00 minimum charge.

**WEIGHT LIMITATIONS** — Pieces weighing up to 150 pounds will be excepted. Shipments over 150 pounds will require advance arrangements.

**DECLARED VALUE** — You are allowed \$50.00 free valuation on shipments weighing up to 100 pounds and \$.50 per pound on shipments over 100 pounds. Additional coverage may be purchased at \$.10 per 100 pounds. Additional evaluations are limited to \$2,500.00 per shipment without prior arrangement.

**PREPAID OR COLLECT CHARGES** — Shipments can be made prepaid or collect and credit arrangements can be made by contacting your local Air Midwest office.

# **air MIDWEST**

AIRLINE TICKETING AND RESERVATION CODE "ZV"

**FROM DENVER, COLORADO – M.S.T.**  
For Reservations and Air Cargo – (303) 398-5360

## **TO DODGE CITY, KANSAS**

Fare: OW \$35.00; RT \$70.00; M \$27.00; YF \$10.00; DA/30 \$52.00

| Flight | Depart | Arrive | Stops | Freq.  | Equip. |
|--------|--------|--------|-------|--------|--------|
| 904    | 9:10A  | 11:50A | 1     | X67    | B9     |
| 908    | 7:20P  | 9:55P  | 1     | X6     | B9     |
| 966    | 2:30P  | 5:05P  | 1     | 6 only | B9     |

## **TO GARDEN CITY, KANSAS**

Fare: OW \$33.00; RT \$66.00; M \$25.00; YF \$17.00; DA/30 \$50.00

| Flight | Depart | Arrive | Stops | Freq.  | Equip. |
|--------|--------|--------|-------|--------|--------|
| 904    | 9:10A  | 11:25P | 0     | X67    | B9     |
| 908    | 7:20P  | 9:30P  | 1     | X6     | B9     |
| 966    | 2:30P  | 4:40P  | 0     | 6 only | B9     |

## **TO GREAT BEND, KANSAS**

Fare: OW \$38.00; RT \$76.00; M \$30.00; YF \$19.00; DA/30 \$57.00

| Flight | Depart | Arrive | Stops | Freq.  | Equip. |
|--------|--------|--------|-------|--------|--------|
| 904    | 9:10A  | 12:25P | 2     | X67    | B9     |
| 906    | 12:10P | 3:00P  | 1     | X67    | B9     |
| 908    | 7:20P  | 10:30P | 2     | X6     | B9     |
| 966    | 2:30P  | 5:40P  | 2     | 6 only | B9     |

## **TO HAYS, KANSAS**

Fare: OW \$35.00; RT \$70.00; M \$27.00; YF \$18.00; DA/30 \$52.00

| Flight | Depart | Arrive | Stops | Freq. | Equip. |
|--------|--------|--------|-------|-------|--------|
| 906    | 12:10P | 2:30P  | 0     | X67   | B9     |

## **TO HUTCHINSON, KANSAS**

Fare: OW \$45.00; RT \$90.00; M \$34.00; YF \$23.00; DA/30 \$68.00

| Flight | Depart | Arrive | Stops | Freq.  | Equip. |
|--------|--------|--------|-------|--------|--------|
| 904    | 9:10A  | 12:55P | 3     | X67    | B9     |
| 906    | 12:10P | 3:35P  | 2     | X67    | B9     |
| 908    | 7:20P  | 11:00P | 3     | X6     | B9     |
| 966    | 2:30P  | 6:10P  | 3     | 6 only | B9     |

## **TO KANSAS CITY, MISSOURI**

Fare: OW \$61.00; RT \$122.00; M \$46.00; YF \$31.00; DA/30 \$92.00

| Flight | Depart | Arrive | Stops | Freq. | Equip. |
|--------|--------|--------|-------|-------|--------|
| 904    | 9:10A  | 2:30P  | 5     | X67   | B9     |
| 906    | 12:10P | 4:45P  | 4     | X67   | B9     |

## **TO WICHITA, KANSAS**

Fare: OW \$52.00; RT \$104.00; M \$39.00; YF \$26.00; DA/30 \$78.00

| Flight | Depart | Arrive | Stops | Freq.  | Equip. |
|--------|--------|--------|-------|--------|--------|
| 904    | 9:10A  | 1:20P  | 4     | X67    | B9     |
| 908    | 7:20P  | 11:25P | 4     | X6     | B9     |
| 966    | 2:30P  | 6:35P  | 4     | 6 only | B9     |

# **air MIDWEST**

SCHEDULES EFFECTIVE JULY 1, 1971

**FROM DODGE CITY, KANSAS – C.S.T.**  
For Reservations and Air Cargo – (316) 227-8679

## **TO DENVER, COLORADO**

Fare: OW \$35.00; RT \$70.00; M \$27.00; YF \$18.00; DA/30 \$52.00

| Flight | Depart | Arrive | Stops | Freq.  | Equip. |
|--------|--------|--------|-------|--------|--------|
| 901    | 8:05A  | 8:45A  | 1     | X67    | B9     |
| 905    | 5:50P  | 6:30P  | 1     | X6     | B9     |
| 963    | 12:20P | 1:00P  | 1     | 6 only | B9     |

## **TO KANSAS CITY, MISSOURI**

Fare: OW \$37.00; RT \$74.00; M \$29.00; YF \$19.00; DA/30 \$56.00

| Flight | Depart | Arrive | Stops | Freq.  | Equip. |
|--------|--------|--------|-------|--------|--------|
| 942    | 6:30A  | 8:20A  | 1     | X7     | TC-B9  |
| 904    | 12:00N | 2:30P  | 3     | X67    | B9     |
| 940    | 5:30P  | 7:30P  | 1     | X67    | TC-B9  |
| 974    | 12:00N | 2:30P  | 3     | 7 only | B9     |

## **TO PUEBLO, COLORADO**

Fare: OW \$35.00; RT \$70.00; M \$27.00; YF \$18.00; DA/30 \$52.00

| Flight | Depart | Arrive | Stops | Freq. | Equip. |
|--------|--------|--------|-------|-------|--------|
| 941    | 10:50P | 11:20P | 1     | X67   | TC     |

## **TO WICHITA, KANSAS**

Fare: OW \$21.00; RT \$42.00; M \$16.00; YF \$11.00; DA/30 \$32.00

| Flight | Depart | Arrive | Stops | Freq.  | Equip. |
|--------|--------|--------|-------|--------|--------|
| 942    | 6:30A  | 7:15A  | 0     | X7     | TC     |
| 904    | 12:00N | 1:20P  | 2     | X67    | B9     |
| 940    | 5:30P  | 6:15P  | 0     | X67    | TC-B9  |
| 908    | 10:05P | 11:25P | 2     | X6     | B9     |
| 966    | 5:15P  | 6:35P  | 2     | 6 only | B9     |
| 974    | 12:00N | 1:20P  | 2     | 7 only | B9     |

## **AIR YOUR FREIGHT**

**VIA**

**am**  
**air MIDWEST**

# air MIDWEST

AIRLINE TICKETING AND RESERVATION CODE "ZV"

**FROM GARDEN CITY, KANSAS — C.S.T.**  
For Reservations and Air Cargo — (316) 276-7331

## TO DENVER, COLORADO

Fare: OW \$33.00; RT \$66.00; M \$35.00; YF \$17.00; DA/30 \$50.00

| Flight | Depart | Arrive | Stops | Freq.  | Equip. |
|--------|--------|--------|-------|--------|--------|
| 901    | 8:30A  | 8:45A  | 0     | X67    | B9     |
| 905    | 6:15P  | 6:30P  | 0     | X6     | B9     |
| 963    | 12:45P | 1:00P  | 0     | 6 only | B9     |

## TO KANSAS CITY, MISSOURI

Fare: OW \$38.00; RT \$76.00; M \$30.00; YF \$19.00; DA/30 \$57.00

| Flight | Depart | Arrive | Stops | Freq. | Equip. |
|--------|--------|--------|-------|-------|--------|
| 942    | 6:00A  | 8:20A  | 2     | X7    | TC-B9  |
| 904    | 11:35A | 2:30P  | 4     | X67   | B9     |
| 940    | 5:00P  | 7:30P  | 2     | X67   | TC-B9  |

## TO PUEBLO, COLORADO

Fare: OW \$35.00; RT \$70.00; M \$27.00; YF \$18.00; DA/30 \$52.00

| Flight | Depart | Arrive | Stops | Freq. | Equip. |
|--------|--------|--------|-------|-------|--------|
| 941    | 11:15P | 11:20P | 0     | X67   | TC     |

## TO WICHITA, KANSAS

Fare: OW \$27.00; RT \$54.00; M \$21.00; YF \$14.00; DA/30 \$42.00

| Flight | Depart | Arrive | Stops | Freq.  | Equip. |
|--------|--------|--------|-------|--------|--------|
| 942    | 6:00A  | 7:15A  | 1     | X7     | TC     |
| 904    | 11:35A | 1:20P  | 3     | X67    | B9     |
| 940    | 5:00P  | 6:15P  | 1     | X67    | TC-B9  |
| 908    | 9:40P  | 11:25P | 3     | X6     | B9     |
| 966    | 4:50P  | 6:35P  | 3     | 6 only | B9     |

**GO TO DENVER  
TWICE A DAY**

**FROM**

**DODGE CITY AND  
GARDEN CITY**

# air MIDWEST

SCHEDULES EFFECTIVE JULY 1, 1971

**FROM GREAT BEND, KANSAS — C.S.T.**  
For Reservations and Air Cargo — (316) 792-4900

## TO DENVER, COLORADO

Fare: OW \$38.00; RT \$76.00; M \$30.00; YF \$19.00; DA/30 \$57.00

| Flight | Depart | Arrive | Stops | Freq.  | Equip. |
|--------|--------|--------|-------|--------|--------|
| 901    | 7:30A  | 8:45A  | 2     | X67    | B9     |
| 903    | 11:00A | 11:45A | 1     | X67    | B9     |
| 905    | 5:15P  | 6:30P  | 2     | X6     | B9     |
| 963    | 11:45A | 1:00P  | 2     | 6 only | B9     |

## TO KANSAS CITY, MISSOURI

Fare: OW \$33.00; RT \$66.00; M \$25.00; YF \$17.00; DA/30 \$50.00

| Flight | Depart | Arrive | Stops | Freq.  | Equip. |
|--------|--------|--------|-------|--------|--------|
| 902    | 6:20A  | 8:20A  | 2     | X7     | B9     |
| 904    | 12:35P | 2:30P  | 2     | X67    | B9     |
| 906    | 3:15P  | 4:45P  | 1     | X67    | B9     |
| 974    | 12:35P | 2:30P  | 2     | 7 only | B9     |

## TO WICHITA, KANSAS

Fare: OW \$18.00; RT \$36.00; M \$15.00; YF \$10.00; DA/30 \$27.00

| Flight | Depart | Arrive | Stops | Freq.  | Equip. |
|--------|--------|--------|-------|--------|--------|
| 902    | 6:20A  | 7:05A  | 1     | X7     | B9     |
| 904    | 12:35P | 1:20P  | 1     | X67    | B9     |
| 910    | 8:25P  | 9:15P  | 1     | X67    | TC     |
| 908    | 10:40P | 11:25P | 1     | X6     | B9     |
| 966    | 5:50P  | 6:35P  | 1     | 6 only | B9     |
| 974    | 12:35P | 1:20P  | 1     | 7 only | B9     |

**FROM HAYS, KANSAS — C.S.T.**  
For Reservations and Air Cargo (913) 625-3311

## TO DENVER, COLORADO

Fare: OW \$35.00; RT \$70.00; M \$27.00; YF \$18.00; DA/30 \$52.00

| Flight | Depart | Arrive | Stops | Freq. | Equip. |
|--------|--------|--------|-------|-------|--------|
| 903    | 11:25A | 11:45A | 0     | X67   | B9     |
| 910    | 8:00P  | 9:15P  | 2     | X67   | TC     |

## TO KANSAS CITY, MISSOURI

Fare: OW \$33.00; RT \$66.00; M \$25.00; YF \$17.00; DA/30 \$50.00

| Flight | Depart | Arrive | Stops | Freq. | Equip. |
|--------|--------|--------|-------|-------|--------|
| 902    | 6:00A  | 8:20A  | 3     | X7    | B9     |
| 906    | 2:40P  | 4:45P  | 2     | X67   | B9     |

## TO WICHITA, KANSAS

Fare: OW \$21.00; RT \$42.00; M \$15.00; YF \$11.00; DA/30 \$32.00

| Flight | Depart | Arrive | Stops | Freq. | Equip. |
|--------|--------|--------|-------|-------|--------|
| 902    | 6:00A  | 7:05A  | 2     | X7    | B9     |
| 910    | 8:00P  | 9:15P  | 2     | X67   | TC     |

# FLY air MIDWEST...

For travel between intermediate cities, contact your local Air Midwest ticket office.



## FOR RESERVATIONS & INFORMATION CALL:

|                                    |                                  |                                    |
|------------------------------------|----------------------------------|------------------------------------|
| TOLL FREE IN KANSAS (800) 362-2070 | DODGE CITY ..... (316) 227-8679  | HUTCHINSON ..... (316) 663-2922    |
| WICHITA ..... (316) 942-1223       | GARDEN CITY ..... (316) 276-7331 | KANSAS CITY, MO. .. (816) 221-0220 |
| DENVER ..... (303) 398-5360        | GREAT BEND ..... (316) 792-4900  | PUEBLO ..... (316) 942-1223        |
|                                    | HAYS ..... (913) 625-3311        |                                    |



# **air MIDWEST**

AIRLINE TICKETING AND RESERVATION CODE "ZV"

**FROM HUTCHINSON, KANSAS — C.S.T.**  
For Reservations and Air Cargo — (316) 663-2922

## **TO DENVER, COLORADO**

Fare: OW \$45.00; RT \$90.00; M \$34.00; YF \$23.00; DA/30 \$68.00

| Flight | Depart | Arrive | Stops | Freq.  | Equip. |
|--------|--------|--------|-------|--------|--------|
| 901    | 7:00A  | 8:45A  | 3     | X67    | B9     |
| 903    | 10:25A | 11:45A | 2     | X67    | B9     |
| 905    | 4:40P  | 6:30P  | 3     | X6     | B9     |
| 963    | 11:10A | 1:00P  | 3     | 6 only | B9     |

## **TO KANSAS CITY, MISSOURI**

Fare: OW \$24.00; RT \$48.00; M \$18.00; YF \$12.00; DA/30 \$36.00

| Flight | Depart | Arrive | Stops | Freq.  | Equip. |
|--------|--------|--------|-------|--------|--------|
| 902    | 6:50A  | 8:20A  | 1     | X7     | B9     |
| 904    | 1:05P  | 2:30P  | 1     | X67    | B9     |
| 906    | 3:45P  | 4:45P  | 0     | X67    | B9     |
| 974    | 1:05P  | 2:30P  | 1     | 7 only | B9     |

## **TO WICHITA, KANSAS**

Fare: OW \$13.00; RT \$26.00; M \$10.00; YF \$10.00; DA/30 \$30.00

| Flight | Depart | Arrive | Stops | Freq.  | Equip. |
|--------|--------|--------|-------|--------|--------|
| 902    | 6:50A  | 7:05A  | 0     | X7     | B9     |
| 904    | 1:05P  | 1:20P  | 0     | X67    | B9     |
| 910    | 8:55P  | 9:15P  | 0     | X67    | TC     |
| 908    | 11:10P | 11:25P | 0     | X6     | B9     |
| 966    | 6:20P  | 6:35P  | 0     | 6 only | B9     |
| 974    | 1:05P  | 1:20P  | 0     | 7 only | B9     |

**FROM KANSAS CITY, MISSOURI — C.S.T.**  
For Reservations and Air Cargo — (816) 221-0220

## **TO DENVER, COLORADO**

Fare: OW \$61.00; RT \$122.00; M \$46.00; YF \$31.00; DA/30 \$92.00

| Flight | Depart | Arrive | Stops | Freq.  | Equip. |
|--------|--------|--------|-------|--------|--------|
| 903    | 8:45A  | 11:45A | 4     | X67    | B9     |
| 905    | 3:00P  | 6:30P  | 5     | X6     | B9     |
| 963    | 9:30A  | 1:00P  | 5     | 6 only | B9     |

## **TO DODGE CITY, KANSAS**

Fare: OW \$37.00; RT \$74.00; M \$29.00; YF \$19.00; DA/30 \$56.00

| Flight | Depart | Arrive | Stops | Freq.  | Equip. |
|--------|--------|--------|-------|--------|--------|
| 943    | 8:45A  | 10:30A | 1     | X67    | B9-TC  |
| 905    | 3:00P  | 5:40P  | 3     | X6     | B9     |
| 941    | 8:30P  | 10:30P | 1     | X67    | B9-TC  |
| 963    | 9:30A  | 12:10P | 3     | 6 only | B9     |
| 949    | 10:00P | 12:00M | 1     | 7 only | TC     |

# **air MIDWEST**

SCHEDULES EFFECTIVE JULY 1, 1971

**FROM KANSAS CITY, MISSOURI (Continued)**

## **TO GARDEN CITY, KANSAS**

Fare: OW \$38.00; RT \$76.00; M \$30.00; YF \$19.00; DA/30 \$57.00

| Flight | Depart | Arrive | Stops | Freq.  | Equip. |
|--------|--------|--------|-------|--------|--------|
| 943    | 8:45A  | 10:55A | 2     | X67    | B9-TC  |
| 905    | 3:00P  | 6:05P  | 4     | X6     | B9     |
| 941    | 8:30P  | 11:10P | 2     | X67    | B9-TC  |
| 963    | 9:30A  | 12:35P | 4     | 6 only | B9     |
| 949    | 10:00P | 12:25A | 2     | 7 only | TC     |

## **TO GREAT BEND, KANSAS**

Fare: OW \$33.00; RT \$66.00; M \$25.00; YF \$17.00; DA/30 \$50.00

| Flight | Depart | Arrive | Stops | Freq.  | Equip. |
|--------|--------|--------|-------|--------|--------|
| 903    | 8:45A  | 10:45A | 2     | X67    | B9     |
| 905    | 3:00P  | 5:00P  | 2     | X6     | B9     |
| 907    | 5:15P  | 7:20P  | 2     | X67    | B9-TC  |
| 909    | 8:30P  | 10:45P | 2     | X67    | B9     |
| 963    | 9:30A  | 11:30A | 2     | 6 only | B9     |
| 979    | 10:00P | 11:59P | 2     | 7 only | TC     |

## **TO HAYS, KANSAS**

Fare: OW \$33.00; RT \$66.00; M \$25.00; YF \$17.00; DA/30 \$50.00

| Flight | Depart | Arrive | Stops | Freq.  | Equip. |
|--------|--------|--------|-------|--------|--------|
| 903    | 8:45A  | 11:15A | 3     | X67    | B9     |
| 907    | 5:15P  | 7:45P  | 3     | X67    | B9-TC  |
| 909    | 8:30P  | 11:10P | 3     | X67    | B9     |
| 979    | 10:00P | 12:25A | 3     | 7 only | TC     |

## **TO HUTCHINSON, KANSAS**

Fare: OW \$24.00; RT \$48.00; M \$18.00; YF \$12.00; DA/30 \$36.00

| Flight | Depart | Arrive | Stops | Freq.  | Equip. |
|--------|--------|--------|-------|--------|--------|
| 903    | 8:45A  | 10:15A | 1     | X67    | B9     |
| 905    | 3:00P  | 4:30P  | 1     | X6     | B9     |
| 907    | 5:15P  | 6:45P  | 1     | X67    | B9     |
| 909    | 8:30P  | 10:15P | 1     | X67    | B9     |
| 963    | 9:30A  | 11:00A | 1     | 6 only | B9     |
| 979    | 10:00P | 11:30P | 1     | 7 only | B9     |

## **TO WICHITA, KANSAS**

Fare: OW \$24.00; RT \$48.00; M \$18.00; YF \$12.00; DA/30 \$36.00

| Flight | Depart | Arrive | Stops | Freq.  | Equip. |
|--------|--------|--------|-------|--------|--------|
| 903    | 8:45A  | 9:40A  | 0     | X67    | B9     |
| 905    | 3:00P  | 3:55P  | 0     | X6     | B9     |
| 907    | 5:15P  | 6:10P  | 0     | X67    | B9     |
| 909    | 8:30P  | 9:25P  | 0     | X67    | B9     |
| 941    | 8:30P  | 9:25P  | 0     | X67    | TC     |
| 963    | 9:30A  | 10:25A | 0     | 6 only | B9     |
| 979    | 10:00P | 10:55P | 0     | 7 only | TC     |

# air MIDWEST

AIRLINE TICKETING AND RESERVATION CODE "ZV"

**FROM PUEBLO, COLORADO — M.S.T.**  
For Reservations and Air Cargo — (316) 942-1223

## TO DODGE CITY, KANSAS

Fare: OW \$35.00; RT \$70.00; M \$27.00; YF \$18.00; DA/30 \$52.00

| Flight | Depart | Arrive | Stops | Freq. | Equip. |
|--------|--------|--------|-------|-------|--------|
| 912    | 12:40A | 3:10A  | X1    | X7-1  | TC     |

## TO GARDEN CITY, KANSAS

Fare: OW \$35.00; RT \$70.00; M \$27.00; YF \$18.00; DA/30 \$52.00

| Flight | Depart | Arrive | Stops | Freq. | Equip. |
|--------|--------|--------|-------|-------|--------|
| 912    | 12:40A | 2:50A  | 0     | X7-1  | TC     |

## TO WICHITA, KANSAS

Fare: OW \$38.00; RT \$76.00; M \$30.00; YF \$19.00; DA/30 \$57.00

| Flight  | Depart | Arrive | Stops | Freq. | Equip. |
|---------|--------|--------|-------|-------|--------|
| 912/942 | 12:40A | 7:15A  | 2     | X7-1  | TC     |

**FROM WICHITA, KANSAS — C.S.T.**  
For Reservations and Air Cargo — (316) 942-1223

## TO DENVER, COLORADO

Fare: OW \$52.00; RT \$104.00; M \$39.00; YF \$26.00; DA/30 \$78.00

| Flight | Depart | Arrive | Stops | Freq.  | Equip. |
|--------|--------|--------|-------|--------|--------|
| 901    | 6:30A  | 8:45A  | 4     | X67    | B9     |
| 903    | 10:00A | 11:45A | 3     | X67    | B9     |
| 905    | 4:15P  | 6:30P  | 4     | X6     | B9     |
| 963    | 10:45A | 1:00P  | 4     | 6 only | B9     |

## TO DODGE CITY, KANSAS

Fare: OW \$21.00; RT \$42.00; M \$16.00; YF \$11.00; DA/30 \$32.00

| Flight | Depart | Arrive | Stops | Freq.  | Equip. |
|--------|--------|--------|-------|--------|--------|
| 901    | 6:30A  | 7:55A  | 2     | X67    | B9     |
| 943    | 9:45A  | 10:30A | 0     | X67    | TC     |
| 905    | 4:15P  | 5:40P  | 2     | X6     | B9     |
| 941    | 9:45P  | 10:30P | 0     | X67    | TC     |
| 963    | 10:45A | 12:10P | 2     | 6 only | B9     |
| 949    | 11:10P | 12:00M | 0     | 7 only | TC     |
| 973    | 10:00A | 11:25A | 2     | 7 only | B9     |

## TO GARDEN CITY, KANSAS

Fare: OW \$27.00; RT \$54.00; M \$21.00; YF \$14.00; DA/30 \$42.00

| Flight | Depart | Arrive | Stops | Freq.  | Equip. |
|--------|--------|--------|-------|--------|--------|
| 901    | 6:30A  | 8:20A  | 3     | X67    | B9     |
| 943    | 9:45A  | 11:00A | 1     | X67    | TC     |
| 905    | 4:15P  | 6:05P  | 3     | X6     | B9     |
| 941    | 9:45P  | 11:00P | 1     | X67    | TC     |
| 963    | 10:45A | 12:35P | 3     | 6 only | B9     |
| 949    | 11:10P | 12:25P | 1     | 7 only | TC     |

# air MIDWEST

SCHEDULES EFFECTIVE JULY 1, 1971

**FROM WICHITA, KANSAS (Continued)**

## TO GREAT BEND, KANSAS

Fare: OW \$18.00; RT \$36.00; M \$15.00; YF \$10.00; DA/30 \$27.00

| Flight | Depart | Arrive | Stops | Freq.  | Equip. |
|--------|--------|--------|-------|--------|--------|
| 901    | 6:30A  | 7:20A  | 1     | X67    | B9     |
| 903    | 10:00A | 10:45A | 1     | X67    | B9     |
| 905    | 4:15P  | 5:00P  | 1     | X6     | B9     |
| 907    | 6:25P  | 7:20P  | 1     | X67    | TC     |
| 909    | 10:00P | 10:45P | 2     | X67    | B9     |
| 963    | 10:45A | 11:30A | 1     | 6 only | B9     |
| 973    | 10:00A | 10:45A | 1     | 7 only | B9     |
| 979    | 11:15P | 12:10A | 1     | 7 only | TC     |

## TO HAYS, KANSAS

Fare: OW \$21.00; RT \$42.00; M \$16.00; YF \$11.00; DA/30 \$32.00

| Flight | Depart | Arrive | Stops | Freq.  | Equip. |
|--------|--------|--------|-------|--------|--------|
| 903    | 10:00A | 11:15A | 2     | X67    | B9     |
| 907    | 6:25P  | 7:45P  | 2     | X67    | TC     |
| 909    | 10:00P | 11:10P | 2     | X67    | B9     |
| 979    | 11:15P | 12:25A | 2     | 7 only | TC     |

## TO HUTCHINSON, KANSAS

Fare: OW \$13.00; RT \$26.00; M \$10.00; YF \$10.00; DA/30 \$20.00

| Flight | Depart | Arrive | Stops | Freq.  | Equip. |
|--------|--------|--------|-------|--------|--------|
| 901    | 6:30A  | 6:50A  | 0     | X67    | B9     |
| 903    | 10:00A | 10:15A | 0     | X67    | B9     |
| 905    | 4:15P  | 4:30P  | 0     | X6     | B9     |
| 907    | 6:25P  | 6:45P  | 0     | X67    | TC     |
| 909    | 10:00P | 10:15P | 0     | X67    | B9     |
| 963    | 10:45A | 11:00A | 0     | 6 only | B9     |
| 973    | 10:00A | 10:15A | 0     | 7 only | B9     |
| 979    | 11:15P | 11:30P | 0     | 7 only | TC     |

## TO KANSAS CITY, MISSOURI

Fare: OW \$24.00; RT \$48.00; M \$18.00; YF \$12.00; DA/30 \$36.00

| Flight | Depart | Arrive | Stops | Freq.  | Equip. |
|--------|--------|--------|-------|--------|--------|
| 902    | 7:25A  | 8:20A  | 0     | X7     | B9     |
| 904    | 1:35P  | 2:30P  | 0     | X67    | B9     |
| 940    | 6:30P  | 7:30P  | 0     | X67    | CT     |
| 970    | 6:30P  | 7:30P  | 0     | 7 only | TC     |
| 974    | 1:35P  | 2:30P  | 0     | 7 only | B9     |

## TO PUEBLO, COLORADO

Fare: OW \$38.00; RT \$76.00; M \$30.00; YF \$19.00; DA/30 \$57.00

| Flight | Depart | Arrive | Stops | Freq. | Equip. |
|--------|--------|--------|-------|-------|--------|
| 941    | 9:45P  | 11:20P | 2     | X67   | TC     |



**TRAVEL NOTES**



**am**

For travel between intermediate cities, contact your local Air Midwest ticket office.