

ALASKA **AIRLINES**

**SYSTEM TIMETABLE
APRIL 27-MAY 31
INCLUDING
ADVANCE
SUMMER
SCHEDULES**



**JET
THE
GAY-90's
WAY IN
GOLDEN
NUGGET
FAN JETS.**

ALASKA AIRLINES

INFORMATION — RESERVATIONS AND TICKET OFFICES

CITY	Reservations and Information	Air Freight	Limousine Fare	Miles from City
ANCHORAGE	272-0571	277-8571	\$1.75	6 SW
ANGOON	788-3131	788-3131	—	—
ANNETTE	882-5111	882-5111	—	—
CORDOVA	424-3280	424-3280	2.00	13 S
CRAIG	826-3314	826-3314	—	—
FAIRBANKS	456-7733	452-1186	1.75	5 SW
HAINES	766-3131	766-3131	1.00	2.5 E
HOONAH	945-3211	945-3211	—	—
HYDABURG	285-3431	285-3431	—	—
JUNEAU AIRPORT	586-1890	789-7378	2.00	9 W
KAKE	785-3121	785-3121	—	—
KETCHIKAN	225-2141	225-2145	1.50	1 S
KLAWOCK	826-3233	826-3233	—	—
KOTZEBUE	442-3351	442-3351	1.00	1 SE
NOME	443-2245	443-2687	1.50	1 W
PELICAN	735-4221	735-4421	—	—
PETERSBURG	772-4518	772-4518	1.75	3 N
PRINCE RUPERT	624-2223	624-2223	.75	3 SE
SEATTLE	243-2000	246-2800	1.50	14 S
SEWARD	224-5600	224-5600	1.00	2 N
SITKA	747-3211	747-8671	.95	3 W
SKAGWAY	983-2211	983-2211	1.00	1 SE
UNALAKLEET	624-3212	624-3212	1.00	1 N
WRANGELL	844-3412	844-3212	1.50	4 N
YAKUTAT	784-3366	784-3366	1.50	5 S

ALASKA AIRLINES

SYSTEM TIMETABLE APRIL 27-MAY 31 INCLUDING ADVANCE SUMMER SCHEDULES



JET THE GAY-90's WAY IN GOLDEN NUGGET FAN JETS.

SYSTEM WIDE ROUTES



ALASKA AIRLINES

Seattle-Tacoma International Airport, Seattle, Washington 98158

QUICK REFERENCE SCHEDULE

EFFECTIVE APRIL 27 THROUGH MAY 31

Cities are listed in alphabetical order. Find the city to which you are traveling (your destination); under that, find the city from which you are departing. As all cities do not have single plane service, connecting flights have been indicated. All times are local.

PHONE 272-0571
From ANCHORAGE To

From ANCHORAGE To											To ANCHORAGE														
Frequency	Leave	Arrive	Flight	Stops	Equip.	Alaska Airlines Phone CITY	Frequency	Leave	Arrive	Flight	Stops	Equip.	Frequency	Leave	Arrive	Flight	Stops	Equip.	Alaska Airlines Phone CITY	Frequency	Leave	Arrive	Flight	Stops	Equip.
Daily	12 50P	1 00A	AS1894/NW14	2	Jet	782-1926 CHICAGO	Daily	2 15A	9 05A	UA159/AS1891	1	Jet	Daily	5 00A	5 40A	AS1866	0	Jet	424-3280 CORDOVA	Daily	10 20A	11 00A	AS1867	0	Jet
Daily	7 00P	6 00A	AS1896/UA158	1	Jet		Daily	10 15A	3 20P	UA143/AS1895	1	Jet	Daily	11 45P	1 15P	AS1898/UA140	1	Jet		Daily	8 55A	3 20P	BN180/AS1895	1	Jet
Daily	11 45P	1 15P	AS1898/UA140	1	Jet		Daily	3 45P	8 05P	UA155/AS1897	1	Jet								Daily	2 00P	8 05P	BN188/AS1897	2	Jet
Daily	5 00A	5 40A	AS1866	0	Jet								Daily	7 00P	10 02P	AS1896/UA706	1	Jet	Enterprise 1898 DENVER	Daily	10 45A	3 20P	UA215/AS1895	1	Jet
Daily	11 45P	2 17P	AS1898/BN181	1	Jet								Daily	11 45P	11 42A	AS1898/UA922	1	Jet		Daily	3 00P	8 05P	UA225/AS1897	2	Jet
Daily	9 50A	10 35A	AS1891	0	Jet		Daily	11 20A	12 05P	AS1894	0	Jet	Daily	9 50A	10 35A	AS1891	0	Jet	456-7733 FAIRBANKS	Daily	5 30P	6 15P	AS1896	0	Jet
Daily	4 00P	4 45P	AS1895	0	Jet		Daily	5 30P	6 15P	AS1896	0	Jet	Daily	4 00P	4 45P	AS1895	0	Jet		Daily	10 15P	11 00P	AS1898	0	Jet
Daily	8 45P	9 30P	AS1897	0	Jet		Daily	10 15P	11 00P	AS1898	0	Jet	Daily	8 45P	9 30P	AS1897	0	Jet		Daily	5 30P	6 00P	AS1896/UA158/UA118	2	Jet
Daily	5 00A	10 30A	AS1866/AS402	4	Jet/PJ	586-1890 GLACIER BAY	Daily	7 40A	11 00A	AS303/AS1867	4	GG/Jet	Daily	5 00A	9 35A	AS1866	2	Jet		Daily	12 50P	9 11P	AS1894/UA325	1	Jet
Daily	5 00A	12 10P	AS1866/AS305	3	Jet/GG		Daily	8 55A	11 00A	AS302/AS1867	3	GG/Jet	Daily	5 00A	12 10P	AS1866/AS405	3	Jet/PJ	766-3131 HAINES	Daily	8 45A	11 00A	AS402/AS1867	3	PJ/Jet
Daily	5 00A	12 10P	AS1866/AS405	3	Jet/PJ		Daily	8 45A	11 00A	AS402/AS1867	3	PJ/Jet	Daily	5 00A	12 10P	AS1866/AS405	3	Jet/PJ		Daily	5 00A	11 00A	AS1867	2	Jet
Daily	5 00A	9 35A	AS1866	2	Jet		Daily	10 30A	11 00A	AS1867	2	Jet	Daily	5 00A	9 35A	AS1866	2	Jet	586-1890 JUNEAU	Daily	10 30A	11 00A	AS1867	2	Jet
Mo We Fr	11 50A	1 45P	AS1867	2	Jet		Mo We Fr	3 15P	6 40P	AS1892	1	Jet	Mo We Fr	11 50A	1 45P	AS1867	2	Jet	442-3351 KOTZEBUE	Mo We Fr	2 40P	6 40P	AS1892	2	Jet
Tu Th Sa Su	11 50A	1 10P	AS1867	1	Jet		Tu Th Sa Su	2 40P	6 40P	AS1892	2	Jet	Tu Th Sa Su	11 50A	1 10P	AS1867	1	Jet		Tu Th Sa Su	2 40P	6 40P	AS1892	2	Jet
Daily	12 50P	9 11P	AS1894/UA325	1	Jet		Daily	1 15A	9 05A	WA652/AS1891	2	Jet	Daily	12 50P	9 11P	AS1894/UA325	1	Jet	466-8464 LOS ANGELES	Daily	10 50A	3 20P	UA292/AS1895	1	Jet
Daily	7 00P	3 37A	AS1896/UA377	2	Jet		Daily	10 50A	3 20P	UA292/AS1895	1	Jet	Daily	7 00P	3 37A	AS1896/UA377	2	Jet		Daily	3 00P	8 05P	UA328/AS1897	1	Jet
Daily	11 45P	10 11A	AS1898/UA347	1	Jet		Daily	3 00P	8 05P	UA328/AS1897	1	Jet	Daily	11 45P	10 11A	AS1898/UA347	1	Jet		Daily	3 00P	8 05P	UA328/AS1897	1	Jet
Daily	12 50P	5 22A	AS1894/NW14/NW242	3	Jet		Daily	11 55P	9 05A	UA159/AS1891	2	Jet	Daily	12 50P	5 22A	AS1894/NW14/NW242	3	Jet	421-4880 NEW YORK	Daily	9 30A	3 20P	NW7/AS1895	1	Jet
Daily	7 00P	9 43A	AS1896/UA158/UA118	2	Jet		Daily	9 30A	3 20P	NW7/AS1895	1	Jet	Daily	7 00P	9 43A	AS1896/UA158/UA118	2	Jet		Daily	2 00P	8 05P	UA917/UA155/AS1897	2	Jet
Daily	11 45P	4 45P	AS1898/UA40	1	Jet		Daily	2 00P	8 05P	UA917/UA155/AS1897	2	Jet	Daily	11 45P	4 45P	AS1898/UA40	1	Jet		Mo We Fr	11 50A	12 40P	AS1867	1	Jet
Mo We Fr	11 50A	12 40P	AS1867	1	Jet		Mo We Fr	4 30P	6 40P	AS1892	0	Jet	Tu Th Sa Su	11 50A	12 05P	AS1867	0	Jet	443-2245 NOME	Mo We Fr	3 55P	6 40P	AS1892	1	Jet
Tu Th Sa Su	11 50A	12 05P	AS1867	0	Jet		Tu Th Sa Su	3 55P	6 40P	AS1892	1	Jet	Tu Th Sa Su	11 50A	12 05P	AS1867	0	Jet		Tu Th Sa Su	3 55P	6 40P	AS1892	1	Jet
Daily	12 50P	7 12P	AS1894/NW12	1	Jet	Commerce 9880 PORTLAND	Daily	3 35A	9 05A	UA157/AS1891	1	Jet	Daily	12 50P	7 12P	AS1894/NW12	1	Jet		Daily	3 35A	9 05A	UA157/AS1891	1	Jet
Daily	11 45P	6 57A	AS1898/UA222	1	Jet		Daily	12 55P	3 20P	CO91/AS1895	1	Jet	Daily	11 45P	6 57A	AS1898/UA222	1	Jet		Daily	12 55P	3 20P	CO91/AS1895	1	Jet
Daily	9 50A	12 20P	AS1891/IY101	1	Jet/PJ	PRUDHOE BAY/SAGWON	Daily	5 00P	8 05P	NW77/AS1897	1	Jet	Daily	9 50A	12 20P	AS1891/IY101	1	Jet/PJ		Daily	5 00P	8 05P	NW77/AS1897	1	Jet
Daily	12 50P	8 40P	AS1894/UA415	1	Jet		Daily	3 10P	6 15P	IY100/AS1896	1	PJ/Jet	Daily	12 50P	8 40P	AS1894/UA415	1	Jet		Daily	3 10P	6 15P	IY100/AS1896	1	PJ/Jet
Daily	7 00P	2 15A	AS1896/UA377	1	Jet	982-8133 SAN FRANCISCO	Daily	2 40A	9 05A	WA652/AS1891	1	Jet	Daily	7 00P	2 15A	AS1896/UA377	1	Jet		Daily	2 40A	9 05A	WA652/AS1891	1	Jet
Daily	11 45P	10 10A	AS1898/UA395	1	Jet		Daily	10 45A	3 20P	WA608/AS1895	1	Jet	Daily	11 45P	10 10A	AS1898/UA395	1	Jet		Daily	10 45A	3 20P	WA608/AS1895	1	Jet
Daily	12 50P	5 45P	AS1894	0	Jet		Daily	3 55P	8 05P	UA268/AS1897	1	Jet	Daily	12 50P	5 45P	AS1894	0	Jet		Daily	3 55P	8 05P	UA268/AS1897	1	Jet
Daily	7 00P	11 55P	AS1896	0	Jet	243-2000 SEATTLE-TACOMA	Daily	8 00A	9 05A	AS1891	0	Jet	Daily	7 00P	11 55P	AS1896	0	Jet		Daily	8 00A	9 05A	AS1891	0	Jet
Daily	11 45P	4 40A	AS1898	0	Jet		Daily	2 15P	3 20P	AS1895	0	Jet	Daily	11 45P	4 40A	AS1898	0	Jet		Daily	2 15P	3 20P	AS1895	0	Jet
Daily	5 00A	10 30A	AS1866	3	Jet		Daily	7 00P	8 05P	AS1897	0	Jet	Daily	5 00A	10 30A	AS1866	3	Jet		Daily	7 00P	8 05P	AS1897	0	Jet
Daily	12 50P	7 37P	AS1894/NW620	1	Jet	Zenith 9909 SPOKANE	Daily	9 30A	11 00A	AS1867	3	Jet	Daily	12 50P	7 37P	AS1894/NW620	1	Jet		Daily	9 30A	11 00A	AS1867	3	Jet
Daily	7 00P	1 17A	AS1896/NW80	1	Jet		Daily	12 55P	3 20P	NW15/AS1895	1	Jet	Daily	7 00P	1 17A	AS1896/NW80	1	Jet		Daily	12 55P	3 20P	NW15/AS1895	1	Jet
Daily	11 45P	7 47A	AS1898/NW18	1	Jet		Daily	5 15P	8 05P	NW71/AS1897	1	Jet	Daily	11 45P	7 47A	AS1898/NW18	1	Jet		Daily	5 15P	8 05P	NW71/AS1897	1	Jet
Daily	7 00P	9 38A	AS1896/UA158/UA346	2	Jet		Daily	12 30A	9 05A	UA239/UA159/AS1891	2	Jet	Daily	7 00P	9 38A	AS1896/UA158/UA346	2	Jet	223-9680 WASHINGTON, D.C.	Daily	12 30A	9 05A	UA239/UA159/AS1891	2	Jet
Daily	11 45P	3 40P	AS1898/NW78	1	Jet		Daily	8 20A	3 20P	UA639/UA143/AS1895	2	Jet	Daily	11 45P	3 40P	AS1898/NW78	1	Jet		Daily	8 20A	3 20P	UA639/UA143/AS1895	2	Jet
Daily	5 00A	7 40A	AS1866	1	Jet		Daily	12 00N	8 05P	NW77/AS1897	4	Jet	Daily	5 00A	7 40A	AS1866	1	Jet		Daily	12 00N	8 05P	NW77/AS1897	4	Jet
Daily	5 00A	7 40A	AS1866	1	Jet	784-3366 YAKUTAT	Daily	10 25A	11 00A	AS1867	1	Jet	Daily	5 00A	7 40A	AS1866	1	Jet		Daily	10 25A	11 00A	AS1867	1	Jet

EFFECTIVE APRIL 27 THROUGH MAY 31

PHONE 456-7733
From FAIRBANKS To

To FAIRBANKS

Frequency	Leave	Arrive	Flight	Stops	Equip.	Alaska Airlines Phone CITY	Frequency	Leave	Arrive	Flight	Stops	Equip.
Daily	11 20A	12 05P	AS1894	0	Jet	272-0571 ANCHORAGE	Daily	9 50A	10 35A	AS1891	0	Jet
Daily	5 30P	6 15P	AS1896	0	Jet		Daily	4 00P	4 45P	AS1895	0	Jet
Daily	10 15P	11 00P	AS1898	0	Jet		Daily	8 45P	9 30P	AS1897	0	Jet
Daily	5 30P	10 13A	AS1896/UA158/UA620	3	Jet	267-7539 BOSTON	Daily	11 05P	10 35A	UA119/UA159/AS1891	4	Jet
Daily	10 15P	5 02P	AS1898/UA140/UA236	3	Jet		Daily	1 05P	9 30P	UA321/UA155/AS1897	3	Jet
Daily	11 20A	1 00A	AS1894/NW14	3	Jet	782-1926 CHICAGO	Daily	2 15A	10 35A	UA159/AS1891	2	Jet
Daily	5 30P	6 00A	AS1896/UA158	2	Jet		Daily	10 15A	4 45P	UA143/AS1895	2	Jet
Daily	10 15P	1 15P	AS1898/UA140	2	Jet		Daily	3 45P	9 30P	UA155/AS1897	2	Jet
Daily	10 15P	2 17P	AS1898/BN181	2	Jet	742-3733 DALLAS	Ex Su Mo	1 00A	10 35A	BN684/AS1891	3	Jet
Daily	5 30P	10 02P	AS1896/UA706	2	Jet	Enterprise 1898 DENVER	Daily	8 55A	4 45P	BN180/AS1895	2	Jet
Daily	10 15P	11 42A	AS1898/UA922	2	Jet		Daily	10 45A	4 45P	UA215/AS1895	2	Jet
Daily	5 30P	10 02P	AS1896/UA706	2	Jet		Daily	3 00P	9 30P	UA225/AS1897	3	Jet
Daily	10 15P	1 55P	AS1898/CO 90	3	Jet	Enterprise 1898 HOUSTON	Daily	8 50A	4 45P	CO91/AS1895	5	Jet
Mo We Fr	8 00A	1 45P	WC739/AS1867	3	Jet	442-3351 KOTZEBUE	Mo We Fr	3 15P	9 30P	AS1892/AS1897	2	Jet
Tu Th Sa	8 00A	1 10P	WC705/AS1867	2	Jet		Tu Th Sa Su	2 40P	9 30P	AS1892/AS1897	3	Jet
Daily	11 20A	9 11P	AS1894/UA325	2	Jet	466-8464 LOS ANGELES	Daily	1 15A	10 35A	WA652/AS1891	3	Jet
Daily	5 30P	3 37A	AS1896/UA377	3	Jet		Daily	10 50A	4 45P	UA292/AS1895	2	Jet
Daily	10 15P	10 11A	AS1898/UA347	2	Jet		Daily	3 00P	9 30P	UA328/AS1897	2	Jet
Daily	5 30P	12 16P	AS1896/NW54/NW700	4	Jet	358-3427 MIAMI	Daily	7 45A	4 45P	EA220/EA94/AS1895	5	Jet
Daily	10 15P	6 00P	AS1898/EA95/EA221	3	Jet		Daily	10 15P	6 00P	AS1898/EA95/EA221	3	Jet
Daily	10 15P	3 27P	AS1898/CO 90	4	Jet	NEW ORLEANS	Daily	7 30A	4 45P	CO91/AS1895	6	

EFFECTIVE APRIL 27 THROUGH MAY 31

PHONE 586-1890 From JUNEAU To											To JUNEAU										
Frequency	Leave	Arrive	Flight	Stops	Equip.	Alaska Airlines Phone CITY	Frequency	Leave	Arrive	Flight	Stops	Equip.									
Daily	10 30A	11 00A	AS1867	2	Jet	272-0571 ANCHORAGE	Daily	5 00A	9 35A	AS1866	2	Jet									
Daily	10 00A	8 13P	AS1866/NW4	2	Jet	782-1926 CHICAGO	Daily	2 15A	10 00A	UA159/AS1867	2	Jet									
Daily	10 30A	10 05A	AS1867	1	Jet	424-3280 CORDOVA	Daily	6 00A	9 35A	AS1866	1	Jet									
Daily	10 00A	10 19P	AS1866 UA383/AA306	3	Jet	742-3733 DALLAS	Ex Su Mo	1 00A	10 00A	BN684/AS1867	2	Jet									
Daily	10 00A	8 15P	AS1866/UA750	5	Jet	Enterprise 1898 DENVER															
Daily	7 45A	8 10A	⊕ AS300	0	GG	586-1890 GLACIER BAY	Daily	8 20A	8 45A	⊕ AS303	0	GG									
Daily	10 10A	10 30A	⊕ AS402	0	PJ		Daily	10 45A	11 05A	⊕ AS405	0	PJ									
Daily	2 15P	2 35P	⊕ AS406	0	PJ		Daily	4 40P	5 00P	⊕ AS407	0	PJ									
Daily	7 40P	8 00P	⊕ AS408	0	PJ		Daily	8 15P	8 35P	⊕ AS409	0	PJ									
Daily	7 30A	7 55A	● AS301	0	GG	766-3131 HAINES	Daily	8 55A	9 20A	● AS302	0	GG									
Daily	7 30A	7 55A	⊕ AS401	0	PJ		Daily	8 45A	9 10A	⊕ AS402	0	PJ									
Daily	11 45A	12 10P	● AS305	0	GG		Daily	1 25P	1 50P	● AS306	0	GG									
Daily	11 45A	12 10P	⊕ AS405	0	PJ		Daily	1 20P	1 45P	⊕ AS406	0	PJ									
Daily	5 40P	6 05P	● AS307	0	GG		Daily	7 05P	7 30P	● AS308	0	GG									
Daily	5 40P	6 05P	⊕ AS407	0	PJ	Daily	6 55P	7 20P	⊕ AS408	0	PJ										
Daily	7 20A	9 10A	AS200/AS102	2	C2/PJ	225-2141 KETCHIKAN/ANNETTE	Daily	10 20A	12 50P	AS205	2	C2									
Daily	2 30P	4 55P	AS507	2	AP		Daily	1 15P	3 30P	AS207	2	C2									
Mo We Fr	10 30A	1 45P	AS1867	5	Jet	442-3351 KOTZEBUE															
Tu Th Sa Su	10 30A	1 10P	AS1867	4	Jet																
Daily	10 00A	4 46P	AS1866/UA383	2	Jet	466-8464 LOS ANGELES	Daily	1 15A	10 00A	WA652/AS1867	3	Jet									
Daily	10 00A	11 59P	AS1866/NW4	3	Jet	421-4880 NEW YORK	Daily	11 55P	10 00A	UA159/AS1867	3	Jet									
Mo We Fr	10 30A	12 40P	AS1867	4	Jet	443-2245 NOME															
Tu Th Sa Su	10 30A	12 05P	AS1867	3	Jet																
Daily	7 20A	8 55A	AS200	0	C2	772-4518 PETERSBURG	Daily	11 50A	12 50P	AS205	0	C2									
Daily	2 30P	3 25P	AS206	0	C2		Daily	2 45P	3 30P	AS207	0	C2									
Daily	10 00A	2 42P	AS1866/UA750	2	Jet	Commerce 9880 PORTLAND	Daily	3 35A	10 00A	UA157/AS1867	2	Jet									
Daily	10 00A	12 50P	AS1866	1	Jet	243-2000 SEATTLE-TACOMA	Daily	7 00A	10 00A	AS1867	1	Jet									
Daily	10 00A	3 00P	AS1866/UA275	2	Jet	982-8133 SAN FRANCISCO	Daily	2 40A	10 00A	WA652/AS1867	2	Jet									
Daily	10 00A	10 30A	AS1866	0	Jet	747-3211 SITKA	Daily	9 30A	10 00A	AS1867	0	Jet									
Daily	2 15P	3 30P	⊕ AS406	1	PJ		Daily	3 45P	5 00P	⊕ AS407	1	PJ									
Daily	4 00P	4 45P	AS208	0	C2		Daily	5 15P	6 00P	AS209	0	C2									
Daily	7 30A	8 20A	● AS301	1	GG		Daily	8 30A	9 20A	● AS302	1	GG									
Daily	7 30A	8 15A	⊕ AS401	1	PJ	Daily	8 25A	9 10A	⊕ AS402	1	PJ										
Daily	11 45A	12 35P	● AS305	1	GG	983-2211 SKAGWAY	Daily	1 00P	1 50P	● AS306	1	GG									
Daily	11 45A	12 30P	⊕ AS405	1	PJ		Daily	1 00P	1 45P	⊕ AS406	1	PJ									
Daily	5 40P	6 30P	● AS307	1	GG		Daily	6 40P	7 30P	● AS308	1	GG									
Daily	5 40P	6 25P	⊕ AS407	1	PJ		Daily	6 35P	7 20P	⊕ AS408	1	PJ									
Daily	10 00A	2 52P	AS1866/NW106	2	Jet		Zenith 9909 SPOKANE														
Daily	10 00A	12 25A	AS1866/UA148/UA230	3	Jet	223-9680 WASHINGTON, D.C.	Daily	12 30A	10 00A	UA239/UA159/AS1867	3	Jet									
Daily	7 20A	8 20A	AS200	0	C2	844-3412 WRANGELL	Daily	11 15A	12 50P	AS205	1	C2									
Daily	2 30P	4 00P	AS206	0	C2		Daily	2 15P	3 30P	AS207	1	C2									
Daily	10 30A	10 10A	AS1867	0	Jet	784-3366 YAKUTAT	Daily	7 55A	9 35A	AS1866	0	Jet									

EFFECTIVE APRIL 27 THROUGH MAY 31

PHONE 243-2000 From SEATTLE - TACOMA To											To SEATTLE - TACOMA												
Frequency	Leave	Arrive	Flight	Stops	Equip.	Alaska Airlines Phone CITY	Frequency	Leave	Arrive	Flight	Stops	Equip.											
Daily	8 00A	9 05A	AS1891	0	Jet	272-0571 ANCHORAGE	Daily	12 50P	5 45P	AS1894	0	Jet											
Daily	2 15P	3 20P	AS1895	0	Jet		Daily	7 00P	11 55P	AS1896	0	Jet											
Daily	7 00P	8 05P	AS1897	0	Jet		Daily	11 45P	4 40A	AS1898	0	Jet											
Daily	7 00A	10 05A	AS1867	3	Jet	424-3280 CORDOVA	Daily	6 00A	12 50P	AS1866	3	Jet											
Daily	8 00A	10 35A	AS1891	1	Jet	456-7733 FAIRBANKS	Daily	11 20A	5 45P	AS1894	1	Jet											
Daily	2 15P	4 45P	AS1895	1	Jet		Daily	5 30P	11 55P	AS1896	1	Jet											
Daily	7 00P	9 30P	AS1897	1	Jet		Daily	10 15P	4 40A	AS1898	1	Jet											
Daily	7 00A	10 30A	AS1867/AS402	2	Jet/PJ	586-1890 GLACIER BAY	Daily	8 20A	12 50P	⊕ AS303/AS1866	3	GG/Jet											
Daily	7 00A	12 10P	● AS1867/AS305	2	Jet/GG	766-3131 HAINES	Daily	8 55A	12 50P	● AS302/AS1866	2	GG/Jet											
Daily	7 00A	12 10P	⊕ AS1867/AS405	2	Jet/PJ		Daily	8 45A	12 50P	⊕ AS402/AS1866	2	PJ/Jet											
Daily	7 00A	10 00A	AS1867	1	Jet	586-1890 JUNEAU	Daily	10 00A	12 50P	AS1866	1	Jet											
Mo We Fr	7 00A	1 45P	AS1867	7	Jet	442-3351 KOTZEBUE	Mo We Fr	3 15P	11 55P	AS1892/AS1896	2	Jet											
Tu Th Sa Su	7 00A	1 10P	AS1867	6	Jet		Tu Th Sa Su	2 40P	11 55P	AS1892/AS1896	3	Jet											
Mo We Fr	7 00A	12 40P	AS1867	6	Jet	443-2245 NOME	Mo We Fr	4 30P	11 55P	AS1892/AS1896	1	Jet											
Tu Th Sa Su	7 00A	12 05P	AS1867	5	Jet		Tu Th Sa Su	3 55P	11 55P	AS1892/AS1896	2	Jet											
Daily	7 00A	11 05A	AS1867/AS202	1	Jet/C2	772-4518 PETERSBURG	Daily	9 15A	12 50P	AS203/AS1866	1	C2/Jet											
Daily	8 00A	12 20P	AS1891/IY101	2	Jet/PJ	PRUDHOE BAY/SAGWON	Daily	3 10P	11 55P	IY100/AS1896	2	PJ/Jet											
Daily	7 00A	9 00A	AS1867	0	Jet	747-3211 SITKA	Daily	11 00A	12 50P	AS1866	0	Jet											
Daily	7 00A	12 35P	● AS1867/AS305	3	Jet/GG	983-2211 SKAGWAY	Daily	8 30A	12 50P	● AS302/AS1866	3	GG/Jet											
Daily	7 00A	12 30P	⊕ AS1867/AS405	3	Jet/PJ		Daily	8 25A	12 50P	⊕ AS402/AS1866	3	PJ/Jet											
Daily	7 00A	11 40A	AS1867/AS202	2	Jet/C2	844-3412 WRANGELL	Daily	8 40A	12 50P	AS203/AS1866	2	C2/Jet											
Daily	7 00A	10 10A	AS1867	2	Jet	784-3366 YAKUTAT	Daily	7 55A	12 50P	AS1866	2	Jet											
PHONE 747-3211 From SITKA To												To SITKA											
Frequency	Leave	Arrive	Flight	Stops	Equip.	Alaska Airlines Phone CITY	Frequency	Leave	Arrive	Flight	Stops	Equip.											
Daily	9 30A	11 00A	AS1867	3	Jet	272-0571 ANCHORAGE	Daily	5 00A	10 30A	AS1866	3	Jet											
Daily	11 00A	8 13P	AS1866/NW4	1	Jet	782-1926 CHICAGO	Daily	2 15A	9 00A	UA159/AS1867	1	Jet											
Daily	9 30A	10 05A	AS1867	2	Jet	424-3280 CORDOVA	Daily	6 00A	10 30A	AS1866	2	Jet											
Daily	11 00A	10 19P	AS1866/UA383/AA306	2	Jet	742-3733 DALLAS	Ex Su Mo.	1 00A	9 00A	BN684/AS1867	1	Jet											
Daily	11 00A	8 15P	AS1866/UA750	4	Jet	Enterprise 1898 DENVER																	
Daily	3 45P	4 30P	⊕ AS407	0	PJ	586-1890 GLACIER BAY	Daily	2 45P	3 30P	⊕ AS406	0	PJ											
Daily	9 30A	12 10P	● AS1867/AS305	1	Jet/GG	766-3131 HAINES	Daily	8 55P	10 30A	● AS302/AS1866	1	GG/Jet											
Daily	9 30A	12 10P	⊕ AS1867/AS405	1	Jet/PJ		Daily	8 45A	10 30A	⊕ AS402/AS1866	1	PJ/Jet											
Daily	3 45P	6 05P	⊕ AS407	3	PJ		Daily	1 20P	3 30P	⊕ AS406	2	PJ											
Daily	9 30A	10 00A	AS1867	0	Jet	586-1890 JUNEAU	Daily	10 00A	10 30A	AS1866	0	Jet											
Daily	3 45P	5 00P	⊕ AS407	1	PJ		Daily	2 15P	3 30P	⊕ AS406	1	PJ											
Daily	5 15P	6 00P	AS209	0	C2		Daily	4 00P	4 45P	AS208	0	C2											

EFFECTIVE APRIL 27 THROUGH MAY 31

PHONE 747-3211
From SITKA To

To SITKA (Continued)

Frequency	Leave	Arrive	Flight	Stops	Equip.	Alaska Airlines Phone CITY	Frequency	Leave	Arrive	Flight	Stops	Equip.
Daily	10 20A	12 35P	AS202	2	C2	225-2141 KETCHIKAN/ANNETTE	Daily	8 00A	10 00A	AS101/AS203	2	PJ/C2
Mo We Fr Tu Th Sa Su	9 30A 9 30A	1 45P 1 10P	AS1867 AS1867	6 5	Jet Jet	442-3351 KOTZEBUE						
Daily	11 00A	4 46P	AS1866/UA383	1	Jet	466-8464 LOS ANGELES	Daily	1 15A	9 00A	WA652/AS1867	2	Jet
Daily	11 00A	11 59P	AS1866/NW4	2	Jet	421-4880 NEW YORK	Daily	11 55P	9 00A	UA159/AS1867	2	Jet
Mo We Fr Tu Th Sa Su	9 30A 9 30A	12 40P 12 05P	AS1867 AS1867	5 4	Jet Jet	443-2245 NOME						
Daily	10 20A	11 05A	AS202	0	C2	772-4518 PETERSBURG	Daily	9 15A	10 00A	AS203	0	C2
Daily	11 00A	2 42P	AS1866/UA750	1	Jet	Commerce 9880 PORTLAND	Daily	3 35A	9 00A	UA157/AS1867	1	Jet
Daily	11 00A	3 00P	AS1866/UA275	1	Jet	982-8133 SAN FRANCISCO	Daily	2 40A	9 00A	WA652/AS1867	1	Jet
Daily	11 00A	12 50P	AS1866	0	Jet	243-200 SEATTLE-TACOMA	Daily	7 00A	9 00A	AS1867	0	Jet
Daily	9 30A	12 35P	● AS1867/AS305	2	Jet/GG	983-2211 SKAGWAY	Daily	8 30A	10 30A	● AS302/AS1866	2	GG/Jet
Daily	9 30A	12 30P	⊕ AS1867/AS405	2	Jet/PJ		Daily	8 25A	10 30A	⊕ AS402/AS1866	2	PJ/Jet
Daily	3 45P	6 25P	⊕ AS407	4	PJ		Daily	1 00P	3 30P	⊕ AS406	3	PJ
Daily	11 00A	2 52P	AS1866/NW106	1	Jet	Zenith 9909 SPOKANE						
Daily	11 00A	12 25A	AS1866/UA148/UA230	2	Jet	223-9680 WASHINGTON, D.C.	Daily	12 30A	9 00A	UA239/UA159/AS1867	2	Jet
Daily	10 20A	11 40A	AS202	1	C2	844-3412 WRANGELL	Daily	8 40A	10 00A	AS203	1	C2
Daily	9 30A	10 10A	AS1867	1	Jet	784-3366 YAKUTAT	Daily	7 55A	10 30A	AS1866	1	Jet

● Discontinued May 14
⊕ Effective May 15
AA - American Airlines
AS - Alaska Airlines

BN - Braniff International
C2 - Convair 240
CO - Continental Airlines
EA - Eastern Airlines
IY - Interior Airlines

NW - Northwest Airlines
PJ - Propjet
UA - United Airlines
WA - Western Airlines
WC - Wien Consolidated Airlines

DISCOUNT FARES

Children's Fares. A child in arms under two years of age not occupying a seat will be carried free when accompanied by parent or guardian and provided parent or guardian has paid effective fare. Children between 2 and 12 years of age may travel at one-half the normal fare.

Clergy Fares. A minister of religion may travel between most Alaska Airlines mainline points at half of the regular fares after purchasing a clergy identification card through the Airlines Clergy Bureau, Sacramento, California, or if in possession of an identification card issued by Air West. Travel is on a space available basis, however, once travel has commenced, clergy passengers will not be removed at intermediate points. Ask your travel agent or Alaska Airlines for complete details.

Discount 50—Air Travel U.S.A. Persons residing outside the Western Hemisphere may upon presenting proof of such residency purchase air travel at 50% of the regular round trip fare. The minimum adult fare is \$79.00 and minimum child's fare is \$40.00. This program is available over the routes of Alaska Airlines and via the majority of air carriers operating within the continental U.S.A. Ask your travel agent or Alaska Airlines for complete details.

Military Standby Fares. Members of our military service on furlough, leave or within 7 days from date of discharge, traveling in uniform, at their own expense

may receive a 50% discount between most Alaska Airlines mainline points. Reservations will not be made but once the military passenger is enplaned, he will not be removed from the flight except to accommodate passengers holding confirmed reservations. When on authorized emergency leave, positive transportation with advance reservations will be permitted. Ask your Alaska Airlines agent for complete details.

Visit U.S.A. Persons residing more than 100 miles beyond any state in the U.S. may purchase 21 days of air transportation permitting unlimited travel throughout the Continental United States and Alaska for \$150. Children between 2 and 21 years of age pay one-half of this amount. Unlimited travel may be over all Alaska Airlines large aircraft routes and via the majority of local service carriers reaching into every area of the U.S.

Young Adult Fares. Young adults 12 through 21 years of age may travel between many Alaska Airlines mainline points on a space available basis at a 50% discount from normal fares. Reservations will not be made but once the young adult is boarded he will not be removed from the flight except to accommodate passengers holding previously confirmed reservations. Alaska Airlines will accept as proof of age either a driver's license, birth certificate or a valid young adult I.D. card of any other airline. Ask your travel agent or Alaska Airlines for complete details.

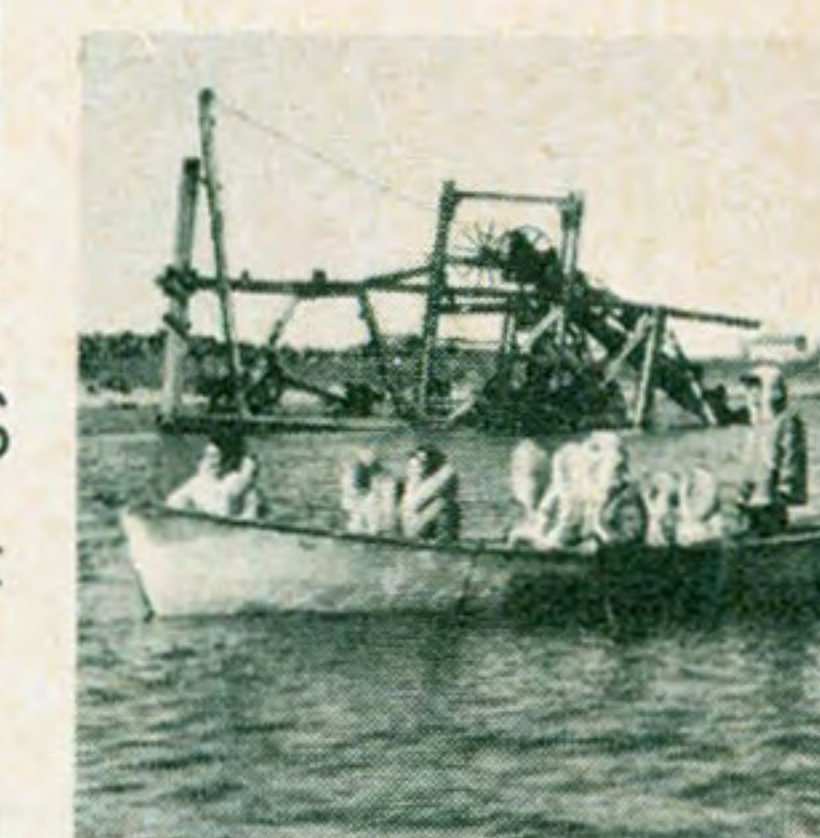
SCHEDULES—Schedules show the time at which flights may be expected to arrive or depart, but Alaska Airlines will not be responsible for consequences arising from delays or from errors in the printed schedule. Times shown are subject to change without notice.



It's "Thrift Season" in the Arctic

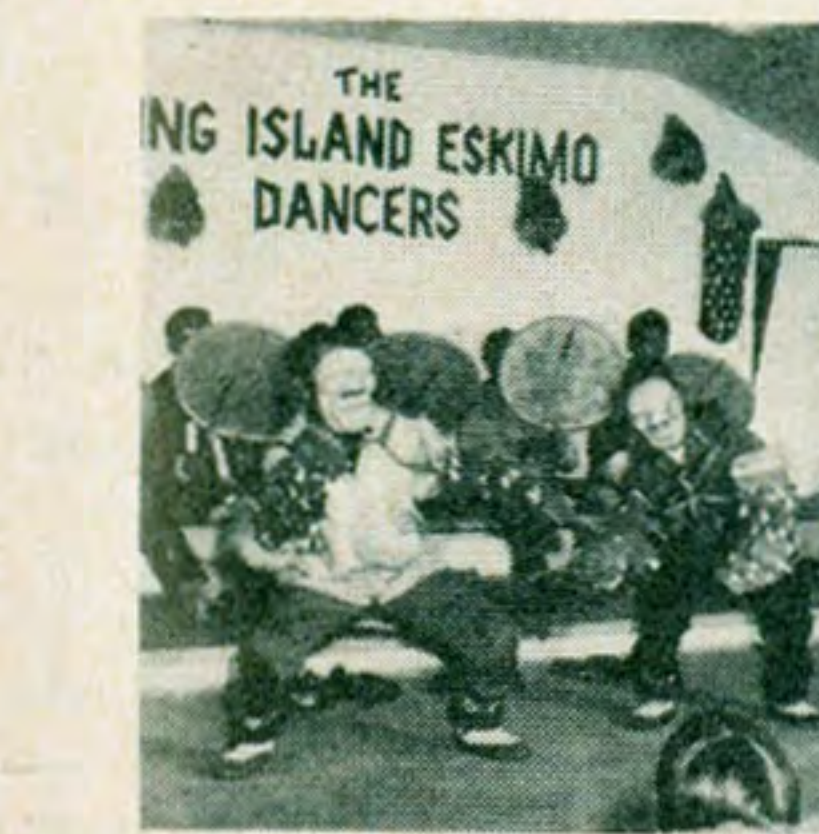
Reduced fares apply until June 15 on Alaska Airlines' Two-day Arctic Adventure Tours to Nome and Kotzebue.

First Day. You depart Anchorage or Fairbanks daily on Alaska Airlines Golden Nugget 727 Fan Jets bound for Nome and Kotzebue. On your way to Kotzebue you pass Mt. McKinley and cross over the mighty Yukon River. These are normally visible enroute. You cross the Arctic Circle and receive a personalized certificate to commemorate the occasion. At Kotzebue you are in the land of perma-frost and tundra. You may see catches of whale, seal and walrus on the beach. Dog team sleds, kayaks and oomiaks are just a few of the facets of Eskimo culture displayed for you to photograph. At Nome you are met and transferred to your comfortable, modern hotel. After dinner, the King Island Eskimos stage blanket tossing in your honor, then entertain you with chants and the rhythmic beat of primitive Eskimo dances. You witness ivory



carving, skin sewing, enjoy warm-hearted Eskimo hospitality.

Second Day. Today you ride in a skin-boat, witness dog sled and kayak demonstrations, and have an irresistible opportunity to shop for unusual souvenirs. An historical tour helps you re-live the gaudy, glamorous days of the Gold Rush. These memories and many, many more reward you as you board your Golden Nugget return flight for Anchorage, or beyond.



Thrift-Season Prices

from Anchorage or Fairbanks

Adults \$129.00
Children (2-12) \$79.00

(Prices, plus tax, include all round-trip air transportation, transfers, sightseeing, hotel, guides, and features described above.)



For reservations, or for detailed information on tour features and tour prices from other Alaskan cities, and from Seattle, contact your Alaska Airlines office or Travel Agent.

SYSTEM FLIGHT SCHEDULE

JUNE 1 - SEPTEMBER 21

NORTHBOUND

FLIGHT NO. AIRCRAFT	401 Prop Jet	101 Prop Jet	303 GG	1883 Fan Jet	202 C2	1867 Fan Jet	203 C2	405 Prop Jet	1891 Fan Jet	503 AP	103 Prop Jet	407 Prop Jet	1895 Fan Jet	205 C2	510 AP	509 AP	107 Prop Jet	508 AP	207 C2	409 Prop Jet	1897 Fan Jet	1899 Fan Jet	City Code
CLASS OF SERVICE	T	T	T	Y	T	Y	T	T	F/Y	T	T	T	Y	T	T	T	T	T	T	T	FN/ YN	YN	
SEATTLE-TACOMA	PDT	Lv				7 00			8 00				2 45								7 00	9 15	SEA
Prince Rupert	"	Lv				B			B				S								D	S	YPR
Annette Island	"	Lv								9 30					2 45								ANN
KETCHIKAN	"	Ar								9 45					3 00								KTN
KETCHIKAN	"	Lv								10 15					2 00		3 45	4 30					ANN
Annette Island	"	Ar												2 15			4 45	5 15					ANN
Annette Island	"	Lv															4 45	5 15					PSG
Petersburg	"	Ar																					PSG
Petersburg	"	Lv																					WRG
Wrangell	"	Ar																					WRG
Wrangell	"	Lv																					PSG
Petersburg	"	Ar																					PSG
Petersburg	"	Lv																					PSG
SITKA	"	Ar																					SIT
SITKA	"	Lv																					SIT
Hoonah	"	Lv																					HNS
Glacier Bay	"	Ar																					HNS
Glacier Bay	"	Lv																					HNS
Hoonah	"	Ar																					HNS
Hoonah	"	Lv																					HNS
JUNEAU	"	Ar																					JNU
JUNEAU	"	Lv																					JNU
Petersburg	"	Ar																					PSG
Petersburg	"	Lv																					PSG
Wrangell	"	Ar																					WRG
Wrangell	"	Lv																					WRG
Annette Island	"	Ar																					ANN
Haines	"	Ar																					HNS
Haines	"	Lv																					HNS
Skagway	"	Ar																					SGY
Yakutat	YDT	Ar																					YAK
Yakutat	"	Lv																					YAK
Cordova	ADT	Ar																					CDV
Cordova	"	Lv																					CDV
ANCHORAGE	"	Ar																					ANC
ANCHORAGE	"	Lv																					ANC
FAIRBANKS	"	Ar																					FAI
Unalakleet	"	Ar																					UNK
Unalakleet	"	Lv																					UNK
NOME	BDT	Ar																					OME
NOME	"	Lv																					OME
Kotzebue	"	Ar																					OTZ
Kotzebue	"	Lv																					OTZ
NOME	"	Ar																					OME

* No Unalakleet service on Sunday and Wednesday

MEAL SERVICE

- B - Breakfast
- C - Complimentary Cocktails and Hors d'oeuvres
- D - Dinner
- L - Lunch
- S - Snack

A meal symbol preceded by an F or Y indicates the meal service in that compartment. Meal symbols by themselves indicate the same meal is served in both Classes. Meal symbols enclosed in a circle indicate the meal is served to boarding passengers only.

ALASKA AIRLINES NAME SERVICE - First Class Passengers will receive personalized service in an exclusive atmosphere with deluxe menus, complimentary champagne or wines, cocktails and liqueurs. Complimentary Sparkling Red Champagne is featured in First Class on all Breakfast and Snack flights. Complete liquor service is available in Coach.

All Flights operate Daily unless otherwise noted.

SYSTEM FLIGHT SCHEDULE

JUNE 1 - SEPTEMBER 21

SOUTHBOUND

FLIGHT NO. AIRCRAFT	500 AP	200 C2	300 GG	506 AP	202 C2	505 AP	504 AP	1866 Fan Jet	102 Prop Jet	402 Prop Jet	206 C2	406 Prop Jet	507 AP	205 C2	1868 Fan Jet	1894 Fan Jet	106 Prop Jet	408 Prop Jet	1896 Fan Jet	1892 Fan Jet	1898 Fan Jet	City Code
CLASS OF SERVICE	T	T	T	T	T	T	T	Y	T	T	T	T	T	T	Y	F/Y	T	T	Y/ YN	Y	FN/ YN	
NOME	BDT	Lv																				OME
Kotzebue	"	Ar																				OTZ
Kotzebue	"	Lv																				OME
NOME	"	Ar																				OME
NOME	"	Lv																				UNK
Unalakleet	ADT	Ar																				UNK
Unalakleet	"	Lv																				UNK
FAIRBANKS	"	Lv																				FAI
ANCHORAGE	"	Ar																				ANC
ANCHORAGE	"	Lv																				ANC
Cordova	"	Ar																				CDV
Cordova	"	Lv																				CDV
Yakutat	YDT	Ar																				YAK
Yakutat	"	Lv																				YAK
Skagway	PDT	Lv																				SGY
Haines	"	Ar																				HNS
Haines	"	Lv																				HNS
Skagway	"	Ar																				HNS
Yakutat	YDT	Ar																				YAK
Yakutat	"	Lv																				YAK
Cordova	ADT	Ar																				CDV
Cordova	"	Lv																				CDV
ANCHORAGE	"	Ar																				ANC
ANCHORAGE	"	Lv																				ANC
FAIRBANKS	"	Ar																				FAI
Unalakleet	"	Ar																				UNK
Unalakleet	"	Lv																				UNK
NOME	BDT	Ar																				OME
NOME	"	Lv																				OME
Kotzebue	"	Ar																				OTZ
Kotzebue	"	Lv																				OTZ
NOME	"	Ar																				OME

* No Unalakleet service on Sunday and Wednesday.

TIME ZONES

- ADT - Alaska Daylight Time
- BDT - Bering Daylight Time
- PDT - Pacific Daylight Time
- YDT - Yukon Daylight Time
- A.M. - Light Face Type
- P.M. - Bold Face Type
- Lv. - Leaves
- Ar. - Arrives

FREQUENCY CODES

LIGHT AIRCRAFT SCHEDULES

EFFECTIVE APRIL 27

SOUTHEAST ALASKA

FLIGHT NO. EQUIPMENT FREQUENCY (DAILY UNLESS NOTED)	21 ZZ		300 GG		322 GG		320 GG		321 GG		11 ZZ		313 GG		316 GG		315 GG		316 GG		325 GG		327 GG		318 GG		318 GG		17 ZZ		City Code
	Ex	Su	Ex	Su		Ex	Su		Ex	Su*		Ex	Su*		Ex	Su		Ex	Su		Ex	Su		Ex	Su		Ex	Su			
JUNEAU	PDT	Lv		9:00		9:00		9:30		10:00					11:00		12:00		1:00		1:30				1:30		3:30			JNU	
PETERSBURG	Lv																												PSG		
KETCHIKAN	Lv		9:00																										KTN		
DUNCAN CANAL	Ar																												DNC		
KAKE	Lv																												KAE		
TEBENKOF BAY	Ar																												KOF		
PORT ALEXANDER	Ar																												POX		
PORT WALTER	Ar																												PWR		
BARANOF	Ar																												BNF		
DEEP BAY	Lv																												—		
LORING	Lv																												LOR		
BELL ISLAND	Lv																												KBE		
YES BAY	Lv																												—		
THORNE BAY	Ar																												KTB		
COFFMAN COVE	Ar																												KCC		
KASAAN	Ar																												KXA		
HYDABURG	Ar																												HYG		
WATERFALL	Ar																												KWF		
CRAIG	Ar																												CGA		
KLAWOCK	Ar																												KLW		
STEAMBOAT BAY	Ar																												WSB		
FUNTER BAY	Ar																												FNR		
HAWK INLET	Ar																												HWI		
ANGOON	Ar																												AGN		
TENAKEE	Ar																												TKE		
CHATHAM	Ar																												CYM		
FALSE ISLAND	Ar																												FLI		
TAKU LODGE	Ar																												TKL		
TAKU HARBOR	Ar																												KTH		
SNETTISHAM	Lv																												SNE		
HOONAH	Lv																												HNH		
GLACIER BAY	Lv																												GST		
EXCURSION INLET	Ar																												EXI		
ELFIN COVE/PORT ALTHORP	Ar																												ELV		
PELICAN	Ar																												PEC		
KETCHIKAN	Ar																												KTN		
PETERSBURG	Ar																												PSG		
JUNEAU	PDT	Ar																											JNU		

REGULAR ONE-WAY FARES

MAIN LINE POINTS

BETWEEN AND	Anchorage	Annette	Cordova	Fairbanks	Glacier Bay	Haines	Juneau	Ketchikan	Kotzebue	Nome	Petersburg	Prince Rupert	Seattle	Sitka	Skagway	Unalakleet	Wrangell
	F	Y	F	Y	F	Y	F	Y	F	Y	F	Y	F	Y	F	Y	
Annette Island	—	80.00	—	—	—	—	—	—	—	—	—	—	—	—	—	—	—
Cape Yakataga	—	35.00	—	—	—	—	—	—	—	—	—	—	—	—	—	—	—
Cordova	20.00	16.00	—	—	—	—	—	—	—	—	—	—	—	—	—	—	—
Fairbanks	45.00	35.00	—	—	—	—	—	—	—	—	—	—	—	—	—	—	—
Glacier Bay	—	69.00	—	—	—	—	—	—	—	—	—	—	—	—	—	—	—
Haines	—	72.00	51.00	—	—	—	—	—	—	—	—	—	—	—	—	—	—
Juneau	66.00	53.00	38.00	47.00	38.00	89.00	71.00	17.00	20.00	—	—	—	—	—	—	—	
Ketchikan	—	80.00	12.00	—	—	—	—	—	—	—	—	—	—	—	—	—	—
Kotzebue	78.00	62.00	—	96.00	77.00	80.00	64.00	—	129.00	141.00	113.00	143.00	—	—	—	—	
Middleton Island	—	32.00	—	—	—	—	—	—	—	—	—	—	—	—	—	—	—
Nome	78.00	62.00	—	96.00	77.00	80.00	64.00	—	129.00	141.00	113.00	143.00	34.00	27.00	—	—	
Petersburg	—	76.00	25.00	—	—	—	—	—	—	—	—	—	—	—	—	—	—
Prince Rupert B.C.	—	100.00	26.00	—	—	—	—	—	—	—	—	—	—	—	—	—	—
Seattle (FN)	106.00	—	—	—	—	106.00	—	—	—	—	—	—	—	—	—	—	—
Seattle (YN)	—	85.00	—	—	—	—	—	—	—	—	—	—	—	—	—	—	—
Seattle (Y)	124.00	99.00	—	96.90	81.90	124.00	99.00	76.00	79.00	75.00	60.00	—	186.00	149.00	186.00	149.00	
Seward	—	13.00	—	—	—	—	—	—	—	—	—	—	—	—	—	—	—
Sitka	66.00	53.00	38.00	66.00	53.00	89.00	71.00	21.00	34.00	25.00	20.00	38.00	141.00	113.00	141.00	113.00	
Skagway	—	74.00	—	—	—	—	—	—	—	—	—	—	—	—	—	—	—
Unalakleet	68.00	55.00	—	87.00	70.00	76.00	61.00	—	—	128.00	103.00	134.00	58.00	46.00	37.00	30.00	
Valdez	—	30.00	—	—	—	—	—	—	—	—	—	—	—	—	—	—	—
Wrangell	—	77.00	22.00	—	—	—	—	—	—	—	—	—	—	—	—	—	—
Yakutat	43.00	35.00	—	25.00	20.00	86.00	69.00	—	—	23.00	19.00	52.00	123.00	98.00	123.00	98.00	

U. S. TRANSPORTATION TAX
The following U. S. Tax amounts apply for trips or portions of trips between points named below through/via which the passenger travels:

BETWEEN AND	F(OW)	FN	Y	YN
Anchorage	\$0.71	\$0.60	\$0.56	\$0.48
Fairbanks	\$0.71	\$0.60	0.56	0.48
Fairbanks	—	—	—	1.41
Seattle	—	—	—	1.18
Seattle	—	—	—	—
Sitka	0.42	—	0.34	—

For travel beyond these gateway points or any other air travel within the State of Alaska, the normal 5% tax applies.

1 ANC stop not permitted; fares of \$99.00 (YN) and \$116.00 (Y) respectively when an ANC stop is made.

To determine the fare for a trip which is partly via First Class and partly via Coach, add the difference between the First Class and Coach fare, for the portion via First Class, to the Coach fare from origin to destination.

LIGHT AIRCRAFT POINTS

To compute the fare from a Mainline Point listed above to a light Aircraft Point, add the fare to your Mainline transfer point to the fare in this section.

BETWEEN AND	Annette	Cordova	Juneau	Ketchikan	Petersburg	Sitka	Wrangell
Angoon	—	—	19.00	—	39.00	21.00	—
Bell Island	—	—	—	15.00	—	—	—
Boswell Bay	—	12.00	—	—	—	—	—
Cape Yakataga	—	24.00	43.00	—	—	—	—
Chatham	—	—	19.00	—	—	19.00	—
Chisana	—	29.00	—	—	—	—	—
Chitina	—	21.00	—	—	—	—	—
Coffman Cove	—	—	—	19.00	—		

PROMOTIONAL FARES

GROUP

Group Fare. Reduced coach fares applying to groups of 10 or more are available between Portland and Seattle and points in Alaska. Group travel applies to flights operating on Monday, Tuesday, Wednesday, Thursday, and Saturday and the return portion, must be used within 21 days after date of departure. Passengers may return separately.

Between And	Seattle				Portland			
	O.W.	Tax	R.T.	Tax	O.W.	Tax	R.T.	Tax
Anchorage	\$ 89.00	\$.51	\$150.00	\$.86	\$ 98.00	\$.96	\$172.00	\$1.96
Kotzebue	—	—	224.00	4.56	—	—	—	—
Nome	—	—	224.00	4.56	—	—	—	—
Sitka	56.00	.32	104.00	.59	—	—	—	—

Between And	Fairbanks			
	O.W.	Tax	R.T.	Tax
Portland	* \$ 98.00	\$.96	*\$172.00	\$1.96
Portland	112.00	1.66	192.00	2.96
Seattle	* 89.00	.51	* 150.00	.86
Seattle	103.00	1.21	167.00	1.71

*—Stopover at Anchorage not permitted.

Written application stating origin, destination and passenger names must be made no later than 24 hours prior to departure.

Round trip fares for groups of (40) or more are available when all persons travel as a single group on all portions of the journey, returning within (7) days after the date of departure.

Between And	Anchorage		Fairbanks
	O.W.	R.T.	R.T.
Cordova	\$ —	\$26.00	\$ —
Fairbanks	21.00	38.00	—
Juneau	—	58.25	86.00
Kotzebue	42.00	77.00	80.00
Nome	42.00	77.00	80.00
Sitka	—	58.25	86.00
Unalakleet	—	57.00	—
Yakutat	—	38.50	—

Between Kotzebue and Nome R.T. \$29.00

Group fares are available for groups of 10 or more provided written application is received at least 24 hours prior to planned departure. When round-trip fares are used, members of the group must travel to the outward destination as a single group but may return individually, however, all travel must be completed within 30 days after the date of origin.

Between Anchorage And	Persons 10—19				Persons 20 or More			
	O.W.	Tax	R.T.	Tax	O.W.	Tax	R.T.	Tax
Fairbanks	\$ 29.00	\$1.45	\$ 52.00	\$2.60	\$ 25.00	\$1.25	\$ 46.00	\$2.30
Juneau	57.00	2.85	99.00	4.95	54.00	2.70	93.00	4.65
Kotzebue	54.00	2.70	104.00	5.02	50.00	2.50	91.00	4.55
Nome	54.00	2.70	104.00	5.02	50.00	2.50	91.00	4.55
Sitka	57.00	2.85	99.00	4.95	54.00	2.70	93.00	4.65
Unalakleet	42.00	2.10	—	—	39.00	1.95	—	—

Fairbanks And	10—19		20—39	
	R.T.		R.T.	
Juneau	\$120.00		\$113.00	
Sitka	120.00		113.00	

Fairbanks And	10—19	10—19	20—39	20—39
	O.W.	R.T.	O.W.	R.T.
Kotzebue	\$54.00	\$104.00	\$50.00	\$91.00
Nome	54.00	104.00	50.00	91.00

Juneau And	10—19		20—39	
	O.W.		O.W.	
Ketchikan	\$35.20		\$33.80	

Nome And	O.W.	
	Sitka	\$105.00
Unalakleet	20.00	19.00

Kotzebue And	10—19	20—39	10—19	20—39
	R.T.	R.T.	O.W.	O.W.
Nome	\$39.00	\$34.00	\$ 21.00	\$19.00
Sitka	—	—	105.00	99.00

EXCURSION

Round trip jet coach excursion fares are available if the ticket is purchased in advance of departure and the return portion is made within the time limit below not including the day of departure from point of origin.

Local and Joint Round Trip Excursion Fares are available if tickets are purchased in advance of departure from origin. Return limit includes day of departure.				
Between - And	R.T. Fare	Tax	Return	
Anchorage - Cordova	\$ 24.00	1.20	6 Days	
Anchorage - Fairbanks	54.00	2.70	3 Days	
Anchorage - Juneau	85.00	4.25	6 Days	
Anchorage - Ketchikan	130.00	6.50	6 Days	
Anchorage - Yakutat	53.00	2.65	6 Days	
Cordova - Juneau	60.00	3.00	6 Days	
Cordova - Ketchikan	107.00	5.35	6 Days	
Cordova - King Salmon	81.75	4.09	6 Days	
Cordova - Kodiak	72.00	3.60	6 Days	
Juneau - Ketchikan	66.00	3.30	6 Days	
Juneau - King Salmon	142.00	7.10	6 Days	
Juneau - Kodiak	137.00	6.85	6 Days	
Juneau - Yakutat	32.00	1.60	6 Days	
Ketchikan - King Salmon	192.00	9.60	6 Days	
Ketchikan - Kodiak	190.00	9.50	6 Days	
Ketchikan - Yakutat	89.00	4.45	6 Days	

FIRST CLASS ROUND TRIP EXCURSION FARES

Between - And	R.T. Fare	Tax	Return
Anchorage - Juneau	105.00	5.25	6 Days

TOUR BASING

Round trip fares during the period of January 15 through June 15 and September 1 through December 15 of each year, are available when tickets are purchased as part of an advertised air tour for a minimum of 3 nights which has a value of at least \$50.00. Tickets must be purchased in advance of departure and the return trip must be made not earlier than 3 days nor later than 21 days in addition to the date of departure. One half of these fares may be used if either the going or return trip is by surface and part of the advertised air tour.

Between And	Seattle				Portland			
	R.T.	Tax	O.W.	Tax	R.T.	Tax	O.W.	Tax
Anchorage ¹	\$150.00	\$.86	\$ 75.00	\$.43	\$172.00	\$1.96	\$ 86.00	\$.98
Anchorage ²	165.00	1.62	82.50	.81	—	—	—	—
Anchorage ³	165.00	4.26	82.50	1.47	—	—	—	—
Fairbanks ⁴	150.00	.86	75.00	.43	172.00	1.96	86.00	.98
Fairbanks ⁵	167.00	1.64	83.50	.82	192.00	2.39	96.00	1.45
Juneau	118.00	.65	59.00	.33	—	—	—	—
Kotzebue	204.00	3.56	112.00	2.28	—	—	—	—
Nome	204.00	3.56	112.00	2.28	—	—	—	—
Sitka	90.00	.51	52.00	.28	—	—	—	—

¹Stopover at Sitka not permitted. ²Stopover at Sitka permitted. ³Via Sitka/Juneau.

⁴Stopover at Anchorage and Sitka not permitted. ⁵Stopover at Anchorage/Sitka permitted.

Round trip fares are available provided all transportation is completed within 7 days after departure and is in connection with a tour of which the transportation is a part. The tour features must include surface transportation, lodging and sightseeing accommodations. Stopovers are permitted.

From	To	Return to	R.T. Fare	Tax
*Fairbanks	Kotzebue	Fairbanks	110.00	\$ 5.50
Fairbanks	Kotzebue	Fairbanks	115.00	5.75
Juneau	Kotzebue	Anchorage	145.00	7.25
Juneau	Kotzebue	Juneau	182.00	9.10
Ketchikan	Kotzebue	Ketchikan	215.00	10.75
Sitka	Kotzebue	Sitka	186.00	9.30

*—Stopover at Anchorage not permitted.

DOWNTOWN TICKET OFFICES

ANCHORAGE	Anchorage Westward Hotel	272-0581
ANCHORAGE	Northern Lights Shopping Center	272-5475
ANCHORAGE	Anchorage Shopping Mall	272-0513
CORDOVA	First Avenue	424-3280
FAIRBANKS	Airport Way and Cushman Street	452-5151
HAINES	City Center	766-3131
JUNEAU	200 N. Franklin Street	586-1890
KETCHIKAN	1287 Tongass Avenue	225-2141
PETERSBURG	City Center	772-4518
SEATTLE	528 Union Street	622-8670
SITKA	110 Lincoln Street	747-3211
SKAGWAY	Sourdough Inn Building	983-2211
WRANGELL	4th and Main Street	844-3412

See back cover for Reservation and Ticket Office information.

REGIONAL AND INTERNATIONAL SALES OFFICES

ANCHORAGE	National Bank of Alaska Bldg.	279-2466
BOSTON	535 Boylston Street	267-7539
CHICAGO	307 N. Michigan Avenue	782-1926
DALLAS	2004 Adolphus Tower	742-3733
FAIRBANKS	Airport Way and Cushman Street	452-5151
HONOLULU	2273 Kalakaua Avenue	923-4420
JUNEAU	2 Marine Way	586-2205
LOS ANGELES	6290 Sunset Boulevard	466-8464
MIAMI	100 Biscayne Ave., Suite 2108	358-3427
NEW YORK	501 Madison Avenue, 23rd Floor	421-4880
PHOENIX	3033 N. Central, Suite 217	266-2903
SAN FRANCISCO	150 Post Street	982-8133
SEATTLE	528 Union Street	622-8670
WASHINGTON, D.C.	1228 Connecticut Avenue	223-9680
EUROPE:	38 Avenue George V, Paris 8, France	256-39-53
ENGLAND:	Arctic Tours, Eagle House, 109/110 Jermyn Street, London S.W., Agents	256-25-38
FAR EAST:	83 Aoyama Kyodo Bldg., 6-18, 3 Chome, Kita-Aoyama Minato-ku	01-930-1872
TOKYO:		407-8386

PRINTED IN U.S.A.

OFFLINE TOLL FREE CITIES

(Just dial operator and ask for number listed opposite your city)

Atlanta	WX 6814
Baltimore	Enterprise 9-1144
Bellingham	Zenith 9909
Bethel, Alas.	Zenith 8000
Bremerton, Wash.	Zenith 9909
Clear, Alas.	Zenith 8000
Cleveland	Enterprise 7880
Denver	Enterprise 1898
Detroit	Enterprise 7880
Dillingham, Alas.	Zenith 8000
Everett, Wash.	Zenith 9909
Fort Worth	Enterprise 1898
Fresno	Enterprise 1188
Glennallen, Alas.	Zenith 8000
Homer, Alas.	Zenith 8000
Houston	Enterprise 1898
Indianapolis	Enterprise 7880
Kansas City	Enterprise 9880
Kenai, Alas.	Zenith 8000
King Salmon, Alas.	Zenith 8000
Kodiak, Alas.	Zenith 8000
Miami	WX 6814
Milwaukee	Enterprise 7880
Minneapolis	Zenith 7880
Nenana, Alas.	Zenith 8000
Oakland	Enterprise 1188
Oklahoma City	Enterprise 1898
Olympia, Wash.	Zenith 9909
Omaha	Enterprise 7880
Palmer, Alas.	Zenith 8000
Philadelphia	Enterprise 6814
Pittsburgh	Zenith 6814
Point Barrow, Alas.	Zenith 8000
Portland, Ore.	Commerce 9880
Sacramento	Enterprise 1188
St. Louis	Enterprise 7880
St. Paul	Zenith 7880
Salt Lake City	Zenith 1898
San Diego	Zenith 2-1898
San Jose	Enterprise 1188
Seldovia, Alas.	Zenith 8000
Soldotna	Zenith 8000
Spokane, Wash.	Zenith 9909
Tacoma, Wash.	Zenith 9339
Tanana, Alas.	Zenith 8000
Tok, Alas.	Zenith 8000
Tulsa	Enterprise 1898
Valdez, Alas.	Zenith 8000
Vancouver, B.C.	Zenith 9909
Victoria, B. C.	Zenith 9909
Yakima, Wash.	Zenith 9909

GOLDEN NUGGET JETS



ALYESKA

**RESORT • NEW HOTEL
SCENIC CHAIRLIFT RIDE
HIKING • HORSEBACK
RIDING • GOLD MINE TOUR**

Mt. Alyeska Resort near Anchorage has Alaska's most fabulous viewing. Ride a comfortable double chairlift 2 1/2 miles round trip to a new and different world of alpine meadows and soaring cliffs with views in all directions of the most fantastic scenery in all of Alaska.

Stay overnight in the brand new Alyeska Nugget Inn... each room plush and comfortable; rich, rustic decor; large restaurant and cocktail lounge; "the best cooking in Alaska."

Mt. Alyeska Resort is only 40 miles south of Anchorage on the scenic Seward Highway. Chairlift, hotel, restaurant, and all facilities are open daily. In addition, Alyeska Air Service provides "Flightseeing" and Glacier Tours, and in the summertime Alyeska offers the nearby Girdwood Gold Mine Tours. For complete details see your travel agent or call Alaska Airlines.

Alaska's Finest Salmon Fishing

Bell Island Hot Springs
Fishing Resort Near Ketchikan.



In Southeast Alaska... on the world's best King Salmon fishing grounds... more King Salmon are caught per licensee at Bell Island than anywhere else in Alaska!

Bell Island is the ideal spot to fish, hunt, swim, hike, cruise, take pictures, or just get away from it all. You'll enjoy the rustic lodge, the cozy, modern cabins, Alaska's largest outdoor swimming pool (maintained at 84° temperature), the delicious family style meals, and the fine cocktail lounge. Accommodations at Bell Island are limited to 30 guests. This insures personal attention and the highest degree of service. It is, however, necessary for you to reserve space well in advance so you won't be disappointed.

Special all-inclusive daily and weekly package plans provide cabin, all meals, boat, motor, fuel, and fishing gear... everything you need and a hot springs, too! See your Travel Agent or Alaska Airlines.