

T I M E T A B L E

*Aloha*

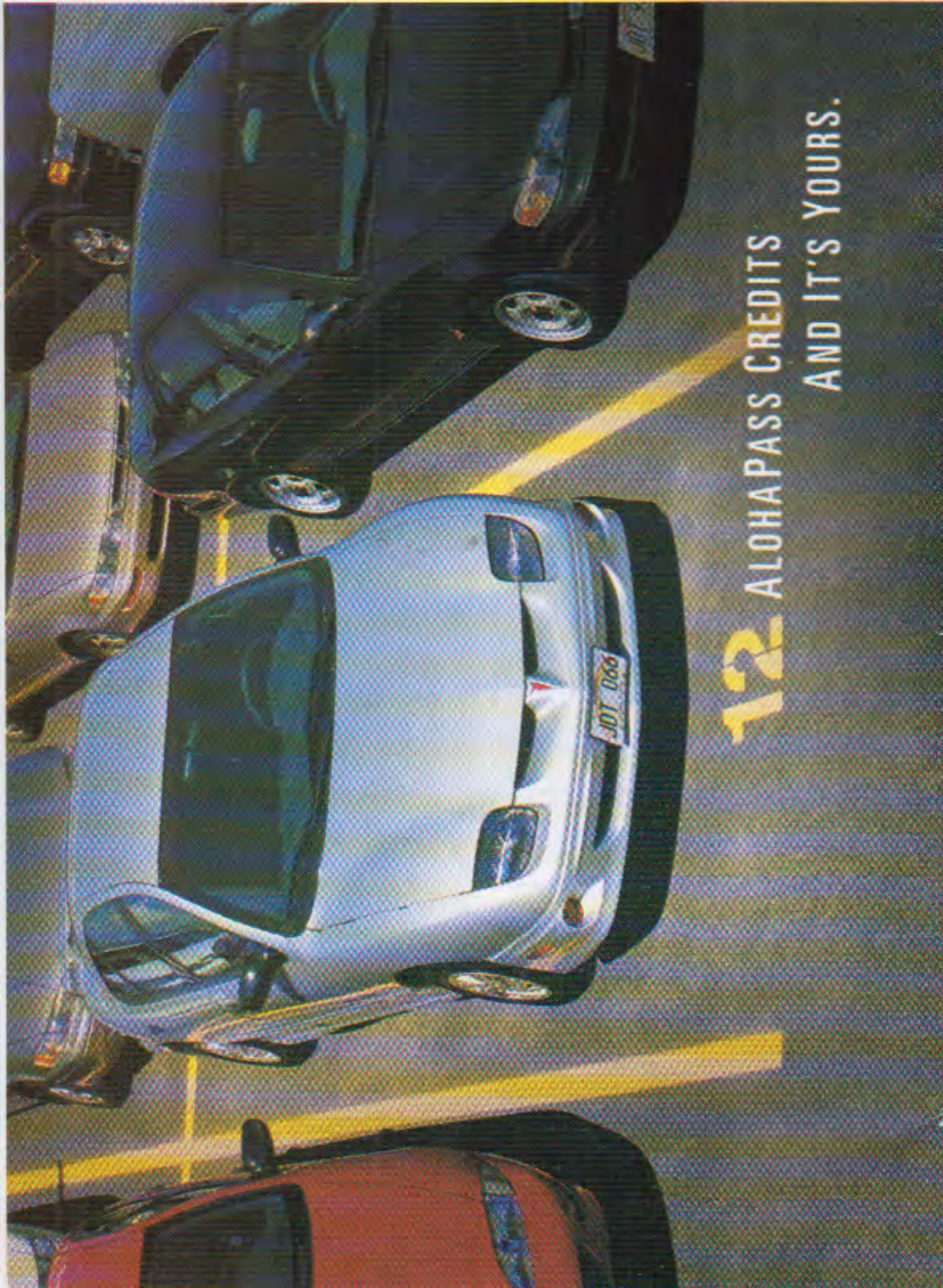
A I R L I N E S

AND

*Island Air*

EFFECTIVE July 2, 2000





**12** ALOHAPASS CREDITS  
AND IT'S YOURS.

You can earn free car rentals from Hawaii's best rent-a-car companies. Simply sign up for AlohaPass and you'll receive one credit for every interisland flight you make.

To sign up, call the AlohaPass Connection at 836-7497 on Oahu or 800-252-5642 from the Neighbor Islands.



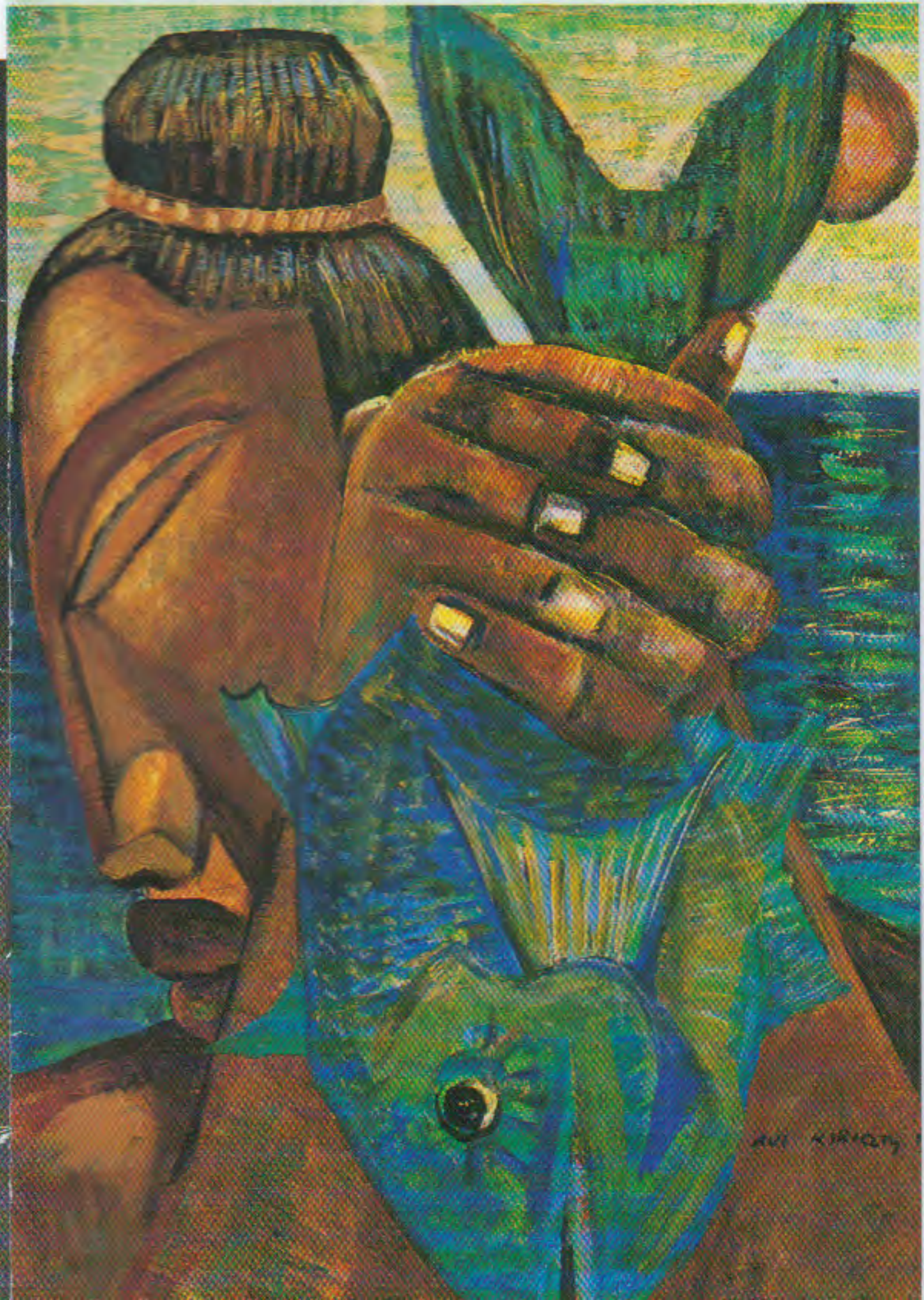
T I M E T A B L E

*Aloha*  
A I R L I N E S

AND

*Island Air*

EFFECTIVE July 2, 2000



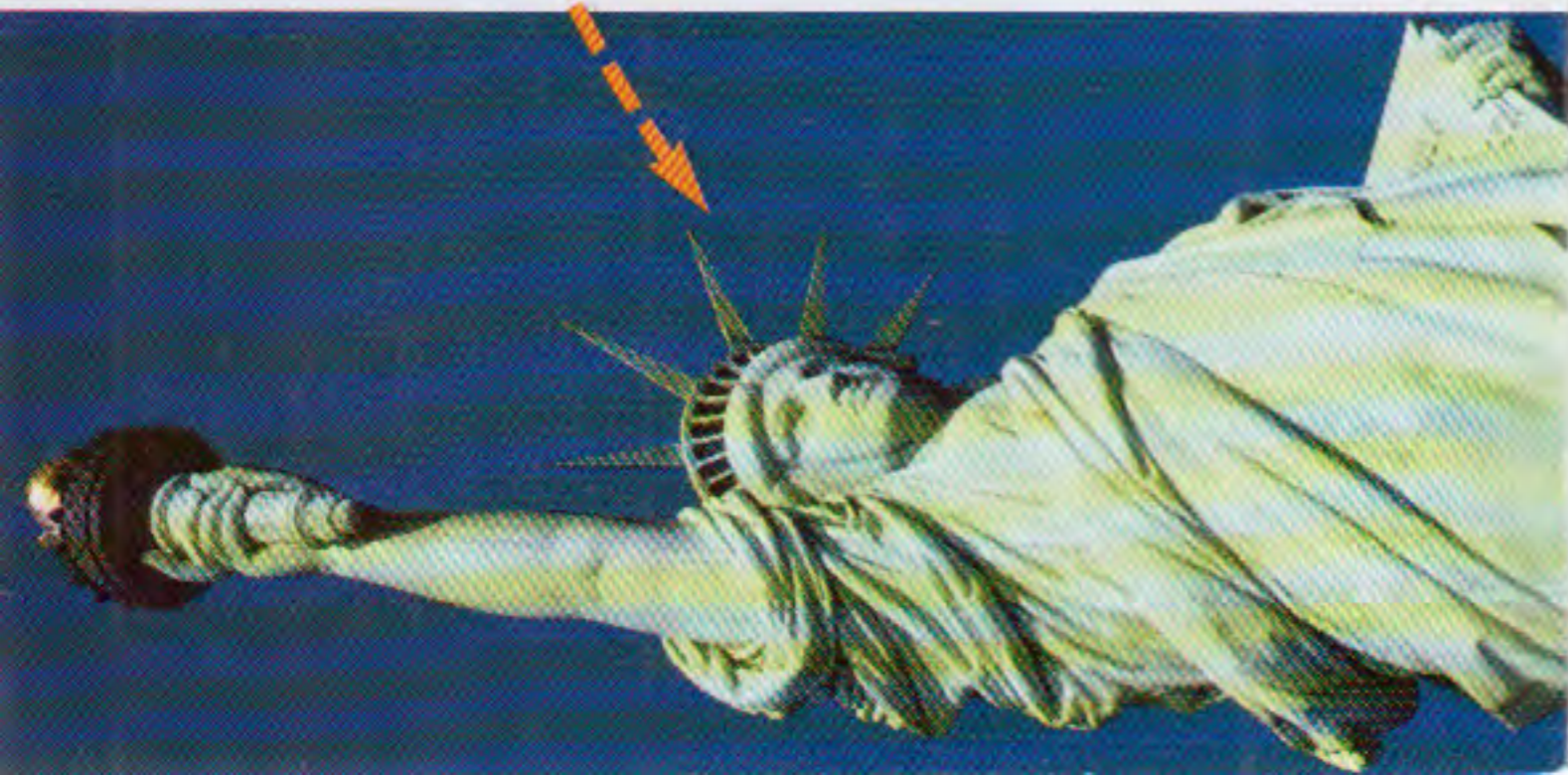


**WE PUT THE PLANE ON THE CARD SO YOU THINK OF NEW YORK EVERY TIME YOU CHARGE.**

Use the Aloha AirAwards card and the credits you earn are good for free travel in Hawaii or most anywhere in the world United Airlines flies. For details or to apply, call 643-LOAN (5626), visit any First Hawaiian Bank branch or visit our web site at [www.fhb.com](http://www.fhb.com).



THE POWER OF YES.



# C O N T E N T S

Trans-Pacific Service from Aloha Airlines and Island Air

4

Interisland Service from Aloha Airlines

6

Aloha Airlines Trans-Pacific Route Map  
Aloha Airlines and Island Air Interisland Route Map

10

Interisland Service from Island Air

14

Partnership Service from Aloha Airlines and United Airlines

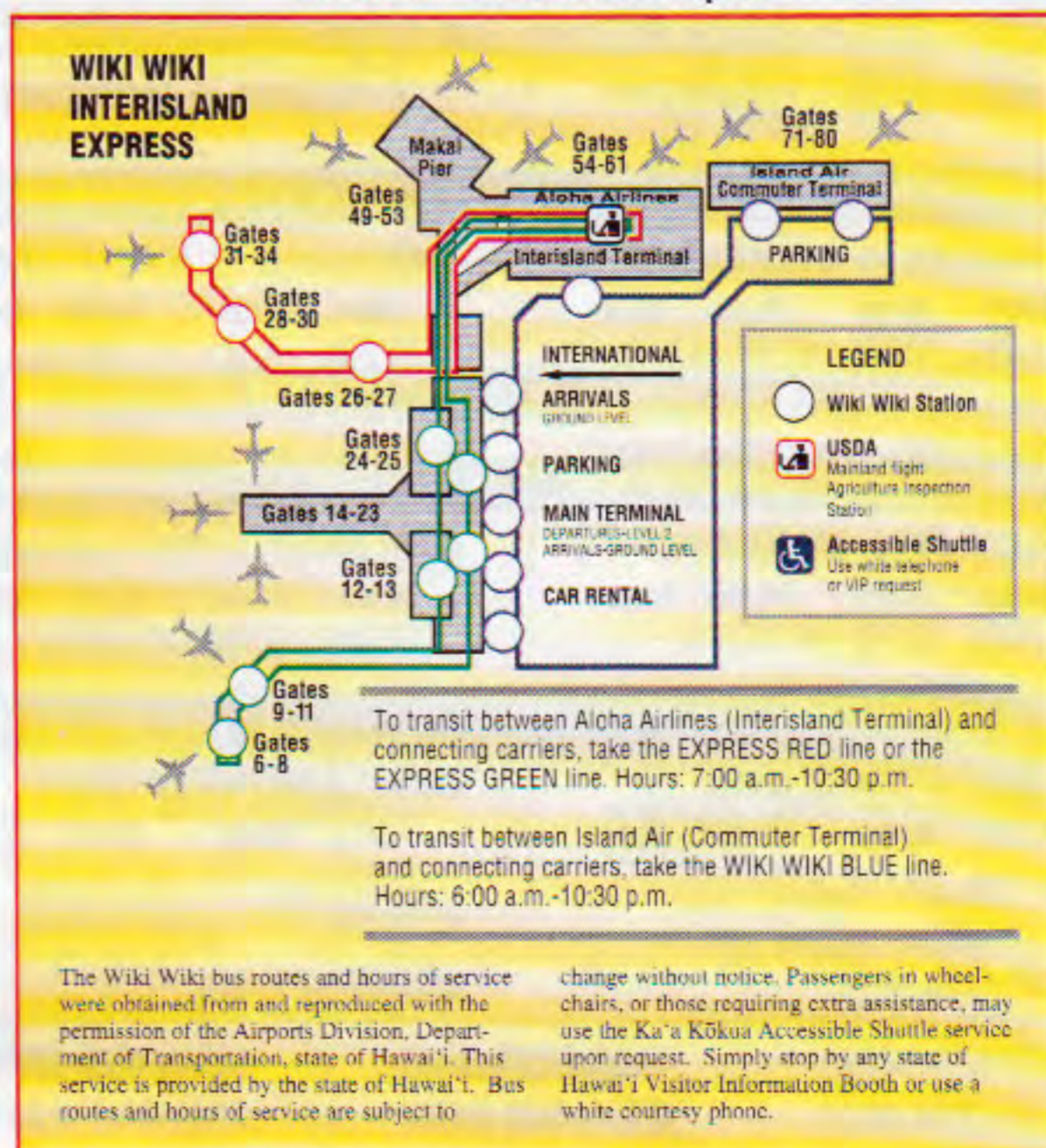
16



## ABOUT THE COVER:

Island artist Avi Kiriarty creates works of lush colors and bold lines that capture everyday events in Polynesia. For inquiries, call 808-933-6659 or visit [www.avikiriarty.com](http://www.avikiriarty.com).

## Honolulu International Airport



TRANS-PACIFIC SERVICE FROM



EFFECTIVE JULY 2, 2000 Schedule subject to change without notice.

**HONOLULU ↔ OAKLAND**

**HONOLULU → OAKLAND**

| Leave   | Arrive | Flt. No. | Stops |
|---------|--------|----------|-------|
| 2:10p   | 10:17p | 442      |       |
| ❖ 3:10p | 10:17p | 442      |       |

**OAKLAND → HONOLULU**

| Leave    | Arrive | Flt. No. | Stops |
|----------|--------|----------|-------|
| 10:30a   | 12:50p | 441      |       |
| ❖ 10:30a | 1:50p  | 441      |       |

**KAHULUI ↔ OAKLAND**

**KAHULUI → OAKLAND**

| Leave   | Arrive | Flt. No. | Stops |
|---------|--------|----------|-------|
| 12:45p  | 8:48p  | 474      |       |
| ❖ 1:45p | 8:48p  | 474      |       |

**OAKLAND → KAHULUI**

| Leave   | Arrive | Flt. No. | Stops |
|---------|--------|----------|-------|
| 9:10a   | 11:25a | 473      |       |
| ❖ 9:10a | 12:25p | 473      |       |

**LIHUE ↔ OAKLAND**

**LIHUE → OAKLAND**

| Leave  | Arrive | Flt. No. | Stops |
|--------|--------|----------|-------|
| 12:50p | 10:17p | 252/442  | 1     |

**OAKLAND → LIHUE**

| Leave    | Arrive | Flt. No. | Stops |
|----------|--------|----------|-------|
| 10:30a   | 2:45p  | 441/263  | 1     |
| ❖ 10:30a | 3:36p  | 441/107  | 1     |

**KONA ↔ OAKLAND**

**KONA → OAKLAND**

| Leave   | Arrive | Flt. No. | Stops |
|---------|--------|----------|-------|
| 12:20p  | 10:17p | 83/442   | 1     |
| ❖ 1:20p | 10:17p | 219/442  | 1     |

**OAKLAND → KONA**

| Leave    | Arrive | Flt. No. | Stops |
|----------|--------|----------|-------|
| 10:30a   | 2:26p  | 441/252  | 1     |
| ❖ 10:30a | 4:30p  | 441/284  | 1     |

**HILO ↔ OAKLAND**

**HILO → OAKLAND**

| Leave   | Arrive | Flt. No. | Stops |
|---------|--------|----------|-------|
| 11:18a  | 10:17p | 247/442  | 1     |
| ❖ 1:34p | 10:17p | 291/442  | 1     |

**OAKLAND → HILO**

| Leave  | Arrive | Flt. No. | Stops |
|--------|--------|----------|-------|
| 10:30a | 3:43p  | 441/294  | 1     |

**KAPALUA ↔ OAKLAND**

**KAPALUA → OAKLAND**

| Leave  | Arrive | Flt. No.  | Stops |
|--------|--------|-----------|-------|
| 12:38p | 10:17p | ❖1569/442 | 1     |

**OAKLAND → KAPALUA**

| Leave    | Arrive | Flt. No.  | Stops |
|----------|--------|-----------|-------|
| 10:30a   | 2:32p  | 441/❖1520 | 1     |
| ❖ 10:30a | 4:47p  | 441/❖1560 | 1     |

**MOLOKAI ↔ OAKLAND**

**MOLOKAI → OAKLAND**

| Leave  | Arrive | Flt. No.  | Stops |
|--------|--------|-----------|-------|
| 12:55p | 10:17p | ❖1165/442 | 1     |

**OAKLAND → MOLOKAI**

| Leave  | Arrive | Flt. No.  | Stops |
|--------|--------|-----------|-------|
| 10:30a | 4:10p  | 441/❖1222 | 1     |

**LANAI ↔ OAKLAND**

**LANAI → OAKLAND**

| Leave  | Arrive | Flt. No.  | Stops |
|--------|--------|-----------|-------|
| 12:55p | 10:17p | ❖1639/442 | 1     |

**OAKLAND → LANAI**

| Leave    | Arrive | Flt. No.  | Stops |
|----------|--------|-----------|-------|
| 10:30a   | 2:20p  | 441/❖1304 | 1     |
| ❖ 10:30a | 3:35p  | 441/❖1624 | 1     |

❖ Flight operated by Island Air as an Aloha Airlines flight.

❖ Effective Oct. 29, 2000

Hilo 935-5771  
Maui 244-9071

Kauai 245-3691  
Oahu 484-1111

Kona 935-5771

TRANS-PACIFIC SERVICE FROM



**HONOLULU ↔ MIDWAY**

**HONOLULU → MIDWAY**

| SATURDAYS |        |          |       |
|-----------|--------|----------|-------|
| Leave     | Arrive | Flt. No. | Stops |
| 4:00p     | 6:17p  | 475      |       |

**MIDWAY → HONOLULU**

| SATURDAYS |        |          |       |
|-----------|--------|----------|-------|
| Leave     | Arrive | Flt. No. | Stops |
| 7:17p     | 11:11p | 476      |       |

**HONOLULU ↔ JOHNSTON**

**HONOLULU → JOHNSTON**

| THURSDAYS |        |          |       |
|-----------|--------|----------|-------|
| Leave     | Arrive | Flt. No. | Stops |
| 1:30p     | 3:36p  | 351      |       |

**JOHNSTON → HONOLULU**

| FRIDAYS |        |          |       |
|---------|--------|----------|-------|
| Leave   | Arrive | Flt. No. | Stops |
| 5:10p   | 7:07p  | 352      |       |

**HONOLULU ↔ MAJURO**

**HONOLULU → MAJURO**

| THUR. | FRI.      | Flt. No. | Stops |
|-------|-----------|----------|-------|
| Leave | Arrive    |          |       |
| 1:30p | 5:38p(+1) | 351      | 1     |

**MAJURO → HONOLULU**

| SAT.   | FRI.      | Flt. No. | Stops |
|--------|-----------|----------|-------|
| Leave  | Arrive    |          |       |
| 11:27a | 7:07p(-1) | 352      | 1     |

**HONOLULU ↔ KWAJALEIN**

**HONOLULU → KWAJALEIN**

| THUR. | FRI.      | Flt. No. | Stops |
|-------|-----------|----------|-------|
| Leave | Arrive    |          |       |
| 1:30p | 7:04p(+1) | 351      | 2     |

**KWAJALEIN → HONOLULU**

| SAT.  | FRI.      | Flt. No. | Stops |
|-------|-----------|----------|-------|
| Leave | Arrive    |          |       |
| 9:50a | 7:07p(-1) | 352      | 2     |

**JOHNSTON ↔ MAJURO**

**JOHNSTON → MAJURO**

| THUR. | FRI.      | Flt. No. | Stops |
|-------|-----------|----------|-------|
| Leave | Arrive    |          |       |
| 4:06p | 5:38p(+1) | 351      |       |

**MAJURO → JOHNSTON**

| SAT.   | FRI.      | Flt. No. | Stops |
|--------|-----------|----------|-------|
| Leave  | Arrive    |          |       |
| 11:27a | 4:40p(-1) | 352      |       |

**JOHNSTON ↔ KWAJALEIN**

**JOHNSTON → KWAJALEIN**

| THUR. | FRI.      | Flt. No. | Stops |
|-------|-----------|----------|-------|
| Leave | Arrive    |          |       |
| 4:06p | 7:04p(+1) | 351      | 1     |

**KWAJALEIN → JOHNSTON**

| SAT.  | FRI.      | Flt. No. | Stops |
|-------|-----------|----------|-------|
| Leave | Arrive    |          |       |
| 9:50a | 4:40p(-1) | 352      | 1     |

**MAJURO ↔ KWAJALEIN**

**MAJURO → KWAJALEIN**

| FRIDAYS |        |          |       |
|---------|--------|----------|-------|
| Leave   | Arrive | Flt. No. | Stops |
| 6:13p   | 7:04p  | 351      |       |

**KWAJALEIN → MAJURO**

| SATURDAYS |        |          |       |
|-----------|--------|----------|-------|
| Leave     | Arrive | Flt. No. | Stops |
| 9:50a     | 10:42a | 352      |       |

Hilo 935-5771  
Maui 244-9071

Kauai 245-3691  
Oahu 484-1111

Kona 935-5771

INTERISLAND SERVICE FROM



A I R L I N E S

HONOLULU ↔ HILO

HONOLULU → HILO

| Leave   | Arrive | Flt. No. | Stops |
|---------|--------|----------|-------|
| 5:20a   | 6:09a  | 40       |       |
| 6:25a   | 7:14a  | 404      |       |
| ▼ 6:50a | 8:23a  | 296      | 1     |
| 7:30a   | 8:19a  | 42       |       |
| ▶ 7:30a | 9:03a  | 272      | 1     |
| 7:45a   | 8:34a  | 108      |       |
| 8:20a   | 9:08a  | 44       |       |
| 10:05a  | 10:54a | 246      |       |
| 12:20p  | 1:08p  | 290      |       |
| 1:20p   | 2:08p  | 248      |       |
| 2:55p   | 3:43p  | 294      |       |
| 3:15p   | 5:37p  | 112      | 2     |
| 3:55p   | 4:44p  | 74       |       |
| ▼ 4:15p | 5:04p  | 68       |       |
| ▶ 4:20p | 5:08p  | 68       |       |
| 4:40p   | 6:10p  | 286      | 1     |
| 5:25p   | 6:14p  | 46       |       |
| 6:45p   | 7:34p  | 48       |       |

HILO → HONOLULU

| Leave   | Arrive | Flt. No. | Stops |
|---------|--------|----------|-------|
| 6:34a   | 7:20a  | 41       |       |
| 7:40a   | 8:26a  | 31       |       |
| ▼ 8:45a | 10:14a | 103      | 1     |
| 8:45a   | 10:21a | 91       | 1     |
| 9:00a   | 9:46a  | 43       |       |
| ▶ 9:28a | 10:15a | 45       |       |
| 9:35a   | 11:55a | 29       | 2     |
| 11:18a  | 12:05p | 247      |       |
| 1:34p   | 2:20p  | 291      |       |
| 2:35p   | 3:21p  | 249      |       |
| 4:10p   | 4:56p  | 295      |       |
| 5:10p   | 5:56p  | 75       |       |
| 5:35p   | 6:21p  | 77       |       |
| 6:04p   | 6:50p  | 65       |       |
| 6:35p   | 7:22p  | 47       |       |
| 6:45p   | 8:21p  | 297      | 1     |
| 8:00p   | 8:47p  | 49       |       |

HONOLULU ↔ KONA

HONOLULU → KONA

| Leave    | Arrive | Flt. No. | Stops |
|----------|--------|----------|-------|
| 5:20a    | 6:01a  | 80       |       |
| 6:15a    | 6:55a  | 82       |       |
| 7:45a    | 8:25a  | 36       |       |
| ▶ 7:45a  | 9:13a  | 204      | 1     |
| 9:05a    | 9:45a  | 288      |       |
| ● 9:30a  | 10:10a | 120      |       |
| 10:10a   | 10:50a | 104      |       |
| 10:45a   | 11:25a | 90       |       |
| 11:15a   | 11:55a | 216      |       |
| ● 11:45a | 1:13p  | 122      | 1     |
| ⋮ 11:50a | 12:30p | 276      |       |
| 12:40p   | 1:21p  | 88       |       |
| 1:05p    | 1:45p  | 92       |       |
| 1:45p    | 2:26p  | 252      |       |
| 2:25p    | 3:05p  | 270      |       |
| ● 3:00p  | 3:40p  | 124      |       |
| 3:15p    | 4:42p  | 112      | 1     |
| 3:50p    | 4:30p  | 284      |       |
| 4:30p    | 5:10p  | 96       |       |
| 5:30p    | 6:10p  | 202      |       |
| 6:25p    | 7:05p  | 282      |       |
| 7:15p    | 7:55p  | 86       |       |

KONA → HONOLULU

| Leave    | Arrive | Flt. No. | Stops |
|----------|--------|----------|-------|
| 6:25a    | 7:04a  | 81       |       |
| 7:20a    | 7:59a  | 85       |       |
| 8:50a    | 9:28a  | 37       |       |
| ▼ 9:35a  | 10:14a | 103      |       |
| ▶ 9:40a  | 10:19a | 103      |       |
| 10:10a   | 10:48a | 231      |       |
| 10:30a   | 11:55a | 29       | 1     |
| ● 10:35a | 11:14a | 121      |       |
| 11:15a   | 11:54a | 109      |       |
| 11:50a   | 12:28p | 95       |       |
| 12:20p   | 12:58p | 83       |       |
| ⋮ 12:55p | 1:34p  | 277      |       |
| 1:20p    | 1:59p  | 219      |       |
| ● 1:40p  | 2:19p  | 123      |       |
| 1:51p    | 3:21p  | 217      | 1     |
| 2:10p    | 2:49p  | 235      |       |
| 2:55p    | 3:34p  | 255      |       |
| 3:30p    | 4:08p  | 271      |       |
| ● 4:05p  | 4:44p  | 125      |       |
| 4:55p    | 5:33p  | 283      |       |
| 5:35p    | 7:01p  | 233      | 1     |
| 6:40p    | 7:19p  | 279      |       |
| 7:30p    | 8:09p  | 289      |       |
| 8:20p    | 8:59p  | 87       |       |

▶ Effective July 2-Aug. 20 Daily;  
 Aug. 21-Open Fr-Sa-Su only.  
 ● Effective July 2-Aug. 20 Fr-Sa-Su only.  
 ⋮ Effective July 2-Aug. 20 Daily.

\* Effective Aug. 21 Daily.  
 ▼ Effective Aug. 21 Mo/Tu/We/Th.

Hilo 935-5771      Kauai 245-3691      Kona 935-5771  
 Maui 244-9071      Oahu 484-1111

INTERISLAND SERVICE FROM



A I R L I N E S

HONOLULU ↔ LIHUE

HONOLULU → LIHUE

| Leave    | Arrive | Flt. No. | Stops |
|----------|--------|----------|-------|
| 5:30a    | 6:05a  | 201      |       |
| 6:15a    | 6:50a  | 205      |       |
| 7:10a    | 7:45a  | 33       |       |
| 7:35a    | 8:10a  | 211      |       |
| 8:10a    | 8:45a  | 245      |       |
| 8:50a    | 9:25a  | 31       |       |
| 9:25a    | 10:00a | 105      |       |
| 9:55a    | 10:30a | 37       |       |
| 10:20a   | 10:55a | 63       |       |
| ▶ 10:45a | 11:21a | 103      |       |
| 11:25a   | 12:00n | 207      |       |
| 11:50a   | 12:26p | 73       |       |
| 12:25p   | 1:01p  | 109      |       |
| 12:55p   | 1:30p  | 117      |       |
| 1:30p    | 2:05p  | 111      |       |
| ▶ 2:10p  | 2:45p  | 263      |       |
| ▼ 2:15p  | 2:50p  | 263      |       |
| 3:00p    | 3:36p  | 107      |       |
| 3:30p    | 4:05p  | 69       |       |
| ▼ 3:50p  | 4:25p  | 249      |       |
| ▶ 4:00p  | 4:35p  | 255      |       |
| 4:35p    | 5:10p  | 271      |       |
| ▶ 5:30p  | 6:05p  | 115      |       |
| ▼ 5:30p  | 6:05p  | 295      |       |
| ▶ 6:05p  | 6:40p  | 265      |       |
| ▼ 6:05p  | 6:40p  | 283      |       |
| 7:25p    | 8:00p  | 233      |       |
| 8:00p    | 8:35p  | 67       |       |

LIHUE → HONOLULU

| Leave    | Arrive | Flt. No. | Stops |
|----------|--------|----------|-------|
| 6:30a    | 6:58a  | 272      |       |
| 7:15a    | 7:43a  | 214      |       |
| 8:10a    | 8:38a  | 34       |       |
| 8:32a    | 9:00a  | 206      |       |
| 9:12a    | 9:40a  | 246      |       |
| 9:50a    | 10:18a | 90       |       |
| 10:25a   | 10:53a | 28       |       |
| 10:55a   | 11:23a | 276      |       |
| ▶ 11:15a | 11:43a | 262      |       |
| ▼ 11:25a | 11:53a | 262      |       |
| ▶ 11:45a | 12:13p | 88       |       |
| 12:25p   | 12:53p | 248      |       |
| 12:50p   | 1:19p  | 252      |       |
| 2:00p    | 2:28p  | 294      |       |
| 2:30p    | 2:58p  | 114      |       |
| ▶ 3:10p  | 3:38p  | 264      |       |
| ▼ 3:15p  | 3:43p  | 68       |       |
| 3:35p    | 4:03p  | 96       |       |
| 4:00p    | 4:29p  | 224      |       |
| 4:30p    | 4:58p  | 202      |       |
| ▼ 4:52p  | 5:20p  | 256      |       |
| ▶ 5:00p  | 5:28p  | 256      |       |
| 5:35p    | 6:03p  | 278      |       |
| 6:30p    | 6:58p  | 116      |       |
| 7:05p    | 7:33p  | 78       |       |
| 8:25p    | 8:53p  | 232      |       |
| 9:00p    | 9:28p  | 230      |       |

KAHULUI ↔ LIHUE

KAHULUI → LIHUE

| Leave    | Arrive | Flt. No. | Stops |
|----------|--------|----------|-------|
| 6:14a    | 7:45a  | 33       | 1     |
| 6:44a    | 8:45a  | 241/245  | 1     |
| 7:25a    | 9:25a  | 101/31   | 1     |
| ▶ 8:10a  | 10:00a | 273/105  | 1     |
| ▼ 8:30a  | 10:00a | 105      | 1     |
| 9:24a    | 10:55a | 63       | 1     |
| ▶ 10:05a | 10:47a | 61       |       |
| ▼ 10:10a | 10:52a | 61       |       |
| 10:24a   | 12:00n | 207      | 1     |
| 10:53a   | 12:26p | 73       | 1     |
| 11:24a   | 1:01p  | 29/109   | 1     |
| 11:40a   | 1:30p  | 209/117  | 1     |
| 12:20p   | 2:05p  | 111      | 1     |
| ▶ 1:15p  | 2:45p  | 263      | 1     |
| ▼ 1:20p  | 2:50p  | 263      | 1     |
| 2:05p    | 3:36p  | 107      | 1     |
| 2:25p    | 3:07p  | 213      |       |
| 2:35p    | 4:05p  | 69       | 1     |
| ▶ 2:50p  | 4:35p  | 217/255  | 1     |

LIHUE → KAHULUI

| Leave    | Arrive | Flt. No. | Stops |
|----------|--------|----------|-------|
| 6:30a    | 8:05a  | 272      | 1     |
| 7:15a    | 8:59a  | 214/62   | 1     |
| 8:10a    | 9:39a  | 34       | 1     |
| 8:32a    | 10:00a | 206      | 1     |
| 9:12a    | 11:15a | 246/208  | 1     |
| 9:50a    | 11:34a | 90/72    | 1     |
| 10:25a   | 11:55a | 28       | 1     |
| 10:55a   | 12:24p | 276      | 1     |
| ▶ 11:15a | 12:50p | 262      | 1     |
| 11:20a   | 12:03p | 30       |       |
| ▼ 11:25a | 12:55p | 262      | 1     |
| ▶ 11:45a | 1:40p  | 88/212   | 1     |
| 12:25p   | 1:59p  | 248/106  | 1     |
| 12:50p   | 2:35p  | 252/244  | 1     |
| 1:25p    | 2:07p  | 118      |       |
| 2:00p    | 3:50p  | 294/112  | 1     |
| 2:30p    | 4:04p  | 114      | 1     |
| ▶ 3:10p  | 4:44p  | 264      | 1     |
| 3:35p    | 5:15p  | 96/286   | 1     |

Continued on next page

Hilo 935-5771      Kauai 245-3691      Kona 935-5771  
 Maui 244-9071      Oahu 484-1111

INTERISLAND SERVICE FROM



A I R L I N E S

Continued from page 7

**KAHULUI ↔ LIHUE**

**KAHULUI → LIHUE**

| Leave   | Arrive | Flt. No. | Stops |
|---------|--------|----------|-------|
| ▼ 3:00p | 5:10p  | 215/271  | 1     |
| ▶ 3:24p | 5:10p  | 239/271  | 1     |
| 4:30p   | 6:05p  | 115      | 1     |
| ▼ 4:49p | 6:40p  | 265/283  | 1     |
| ▶ 5:10p | 6:40p  | 265      | 1     |
| 6:30p   | 8:00p  | 233      | 1     |
| 7:05p   | 8:35p  | 67       | 1     |

**LIHUE → KAHULUI**

| Leave   | Arrive | Flt. No. | Stops |
|---------|--------|----------|-------|
| 4:00p   | 5:35p  | 224      | 1     |
| ▼ 4:52p | 6:40p  | 256/66   | 1     |
| ▶ 5:00p | 6:40p  | 256/66   | 1     |
| 5:35p   | 7:04p  | 278      | 1     |
| 7:05p   | 8:35p  | 78       | 1     |

**HONOLULU ↔ KAHULUI**

**HONOLULU → KAHULUI**

| Leave    | Arrive | Flt. No. | Stops |
|----------|--------|----------|-------|
| 5:15a    | 5:49a  | 302      |       |
| 5:45a    | 6:19a  | 240      |       |
| 6:25a    | 7:00a  | 110      |       |
| ▼ 6:50a  | 7:25a  | 296      |       |
| 7:10a    | 7:44a  | 60       |       |
| 7:30a    | 8:05a  | 272      |       |
| ▶ 7:45a  | 8:19a  | 204      |       |
| 8:00a    | 8:34a  | 266      |       |
| 8:25a    | 8:59a  | 62       |       |
| 9:05a    | 9:39a  | 34       |       |
| 9:25a    | 10:00a | 206      |       |
| 9:55a    | 10:29a | 70       |       |
| 10:40a   | 11:15a | 208      |       |
| 11:00a   | 11:34a | 72       |       |
| 11:20a   | 11:55a | 28       |       |
| ● 11:45a | 12:20p | 122      |       |
| * 11:50a | 12:24p | 276      |       |
| ▶ 12:15p | 12:50p | 262      |       |
| ▼ 12:20p | 12:55p | 262      |       |
| ▶ 12:30p | 1:05p  | 210      |       |
| 1:05p    | 1:40p  | 212      |       |
| 1:25p    | 1:59p  | 106      |       |
| 2:00p    | 2:35p  | 244      |       |
| ▶ 2:25p  | 2:59p  | 238      |       |
| 2:45p    | 3:19p  | 26       |       |
| 3:15p    | 3:50p  | 112      |       |
| 3:30p    | 4:04p  | 114      |       |
| 3:50p    | 4:24p  | 102      |       |
| ▶ 4:10p  | 4:44p  | 264      |       |
| 4:40p    | 5:15p  | 286      |       |
| 5:00p    | 5:35p  | 224      |       |
| ● 5:15p  | 5:50p  | 126      |       |
| 6:05p    | 6:40p  | 66       |       |
| 6:30p    | 7:04p  | 278      |       |
| 7:05p    | 7:40p  | 228      |       |
| 8:00p    | 8:35p  | 78       |       |

**KAHULUI → HONOLULU**

| Leave    | Arrive | Flt. No. | Stops |
|----------|--------|----------|-------|
| 6:14a    | 6:45a  | 33       |       |
| 6:44a    | 7:15a  | 241      |       |
| 7:25a    | 7:56a  | 101      |       |
| 8:10a    | 8:41a  | 273      |       |
| ▼ 8:30a  | 9:01a  | 105      |       |
| 9:00a    | 9:31a  | 275      |       |
| 9:24a    | 9:55a  | 63       |       |
| 9:50a    | 10:21a | 91       |       |
| 10:24a   | 10:55a | 207      |       |
| 10:53a   | 11:25a | 73       |       |
| 11:24a   | 11:55a | 29       |       |
| 11:40a   | 12:11p | 209      |       |
| 12:00n   | 12:31p | 71       |       |
| 12:20p   | 12:51p | 111      |       |
| * 12:50p | 1:21p  | 277      |       |
| ▶ 1:15p  | 1:46p  | 263      |       |
| ▼ 1:20p  | 1:51p  | 263      |       |
| ▶ 1:30p  | 2:01p  | 227      |       |
| 2:05p    | 2:36p  | 107      |       |
| 2:35p    | 3:06p  | 69       |       |
| 2:50p    | 3:21p  | 217      |       |
| 3:00p    | 3:31p  | 215      |       |
| ▶ 3:24p  | 3:55p  | 239      |       |
| 3:44p    | 4:15p  | 93       |       |
| 4:30p    | 5:01p  | 115      |       |
| ▶ 4:49p  | 5:20p  | 257      |       |
| ▼ 5:05p  | 5:36p  | 265      |       |
| ▶ 5:10p  | 5:41p  | 265      |       |
| 6:00p    | 6:32p  | 225      |       |
| ● 6:15p  | 6:46p  | 127      |       |
| 6:30p    | 7:01p  | 233      |       |
| 7:05p    | 7:36p  | 67       |       |
| 7:30p    | 8:01p  | 259      |       |
| 7:50p    | 8:21p  | 297      |       |
| 8:15p    | 8:46p  | 229      |       |
| 9:00p    | 9:31p  | 79       |       |

▶ Effective July 2-Aug. 20 Daily;  
Aug. 21-Open Fr-Sa-Su only.  
● Effective July 2-Aug. 20 Fr-Sa-Su only.  
\* Effective July 2-Aug. 20 Daily.

\* Effective Aug. 21 Daily.  
▼ Effective Aug. 21 Mo/Tu/We/Th.

Hilo 935-5771  
Maui 244-9071

Kauai 245-3691  
Oahu 484-1111

Kona 935-5771

INTERISLAND SERVICE FROM



A I R L I N E S

**KONA ↔ LIHUE**

**KONA → LIHUE**

| Leave    | Arrive | Flt. No. | Stops |
|----------|--------|----------|-------|
| 6:25a    | 8:10a  | 81/211   | 1     |
| 7:20a    | 9:25a  | 85/31    | 1     |
| 8:50a    | 10:30a | 37       | 1     |
| ▶ 9:40a  | 11:21a | 103      | 1     |
| 10:10a   | 12:00n | 231/207  | 1     |
| ● 10:35a | 12:26p | 121/73   | 1     |
| 11:15a   | 1:01p  | 109      | 1     |
| 12:20p   | 2:05p  | 83/111   | 1     |
| 1:20p    | 3:36p  | 219/107  | 1     |
| ● 1:40p  | 3:36p  | 123/107  | 1     |
| 2:10p    | 4:05p  | 235/69   | 1     |
| ▶ 2:55p  | 4:35p  | 255      | 1     |
| 3:30p    | 5:10p  | 271      | 1     |
| ● 4:05p  | 6:05p  | 125/115  | 1     |
| ▼ 4:55p  | 6:40p  | 283      | 1     |
| ▶ 4:55p  | 6:40p  | 283/265  | 1     |
| 5:35p    | 8:00p  | 233      | 2     |
| 6:40p    | 8:35p  | 279/67   | 1     |

**LIHUE → KONA**

| Leave    | Arrive | Flt. No. | Stops |
|----------|--------|----------|-------|
| 6:30a    | 8:25a  | 272/36   | 1     |
| ● 8:32a  | 10:00a | 206/120  | 1     |
| 9:12a    | 10:50a | 246/104  | 1     |
| 9:50a    | 11:25a | 90       | 1     |
| 11:20a   | 12:58p | 30       | 1     |
| ▶ 11:45a | 1:21p  | 88       | 1     |
| ▼ 11:25a | 1:21p  | 262/88   | 1     |
| 12:50p   | 2:26p  | 252      | 1     |
| ● 2:00p  | 3:40p  | 294/124  | 1     |
| 2:30p    | 4:30p  | 114/284  | 1     |
| 3:35p    | 5:10p  | 96       | 1     |
| 4:30p    | 6:10p  | 202      | 1     |
| ▼ 4:52p  | 7:05p  | 256/282  | 1     |
| ▶ 5:00p  | 7:05p  | 256/282  | 1     |
| 5:35p    | 7:55p  | 278/86   | 1     |

**HILO ↔ LIHUE**

**HILO → LIHUE**

| Leave   | Arrive | Flt. No. | Stops |
|---------|--------|----------|-------|
| 6:34a   | 8:45a  | 41/245   | 1     |
| 7:40a   | 9:25a  | 31       | 1     |
| ▶ 8:45a | 10:47a | 91/61    | OGG   |
| ▼ 8:45a | 10:52a | 91/61    | OGG   |
| 9:00a   | 10:55a | 43/63    | 1     |
| ▶ 9:28a | 11:21a | 45/103   | 1     |
| 11:18a  | 1:30p  | 247/117  | 1     |
| 1:34p   | 3:36p  | 291/107  | 1     |
| ▼ 2:35p | 4:25p  | 249      | 1     |
| ▶ 2:35p | 4:35p  | 249/255  | 1     |
| ▼ 4:10p | 6:05p  | 295      | 1     |
| ▶ 4:10p | 6:05p  | 295/115  | 1     |
| 6:04p   | 8:00p  | 65/233   | 1     |
| 6:35p   | 8:35p  | 47/67    | 1     |

**LIHUE → HILO**

| Leave    | Arrive | Flt. No. | Stops |
|----------|--------|----------|-------|
| 6:30a    | 8:19a  | 272/42   | 1     |
| ▶ 6:30a  | 9:03a  | 272      | 2     |
| 7:15a    | 9:08a  | 214/44   | 1     |
| 9:12a    | 10:54a | 246      | 1     |
| 10:55a   | 1:08p  | 276/290  | 1     |
| ▶ 11:15a | 1:08p  | 262/290  | 1     |
| 12:25p   | 2:08p  | 248      | 1     |
| 2:00p    | 3:43p  | 294      | 1     |
| 2:30p    | 4:44p  | 114/74   | 1     |
| ▶ 3:10p  | 5:08p  | 264/68   | 1     |
| ▼ 3:15p  | 5:04p  | 68       | 1     |
| 4:00p    | 6:14p  | 224/46   | 1     |
| 5:35p    | 7:34p  | 278/48   | 1     |

**HILO ↔ KAHULUI**

**HILO → KAHULUI**

| Leave | Arrive | Flt. No. | Stops |
|-------|--------|----------|-------|
| 8:45a | 9:19a  | 91       |       |
| 9:35a | 10:58a | 29       | 1     |
| 6:45p | 7:20p  | 297      |       |

**KAHULUI → HILO**

| Leave   | Arrive | Flt. No. | Stops |
|---------|--------|----------|-------|
| ▼ 7:50a | 8:23a  | 296      |       |
| ▶ 8:30a | 9:03a  | 272      |       |
| 4:15p   | 5:37p  | 112      | 1     |
| 5:37p   | 6:10p  | 286      |       |

Continued on page 12

\* Effective Aug. 21 Daily.  
▼ Effective Aug. 21 Mo/Tu/We/Th.

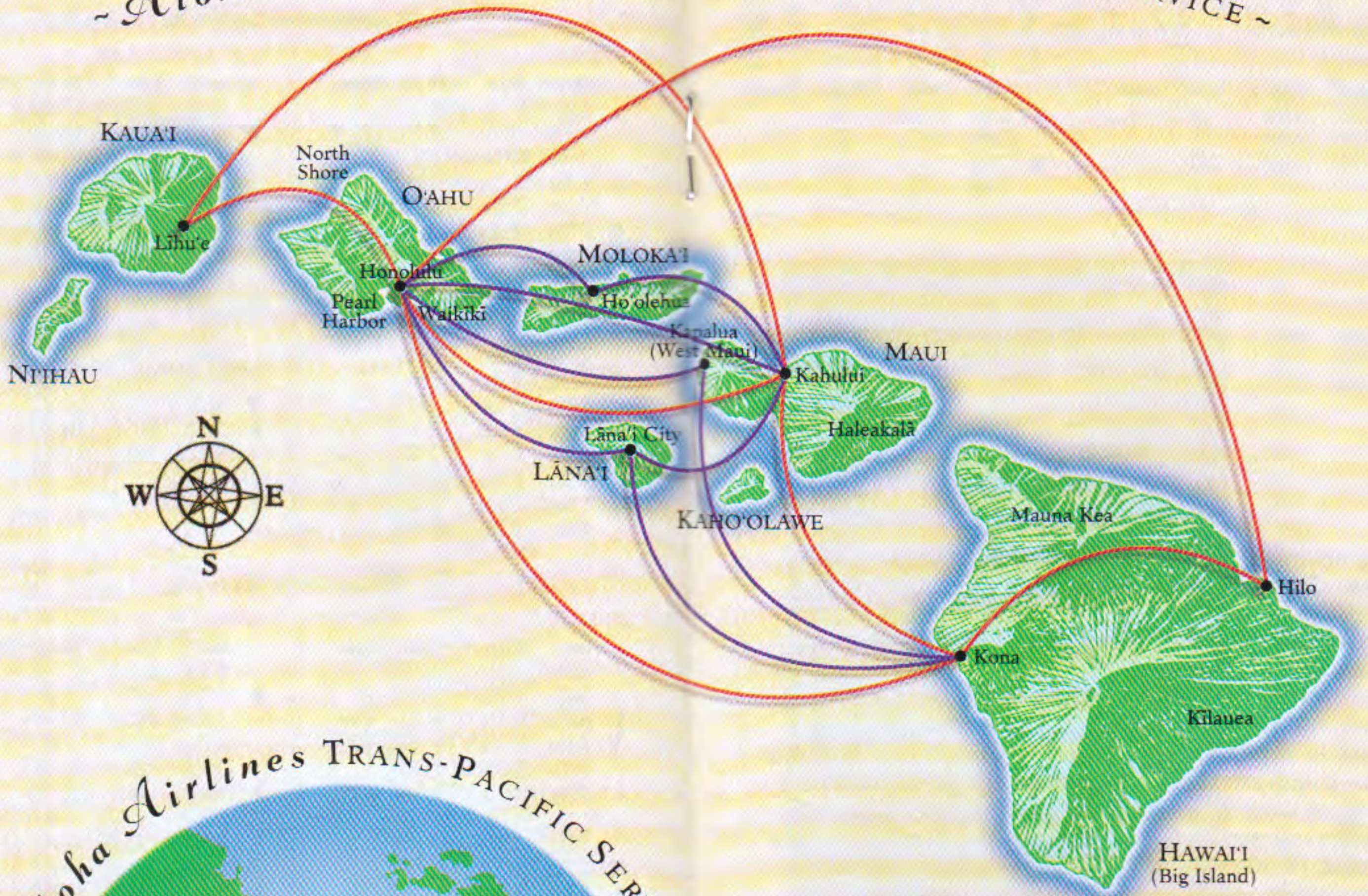
▶ Effective July 2-Aug. 20 Daily;  
Aug. 21-Open Fr-Sa-Su only.  
● Effective July 2-Aug. 20 Fr-Sa-Su only.  
\* Effective July 2-Aug. 20 Daily.

Hilo 935-5771  
Maui 244-9071

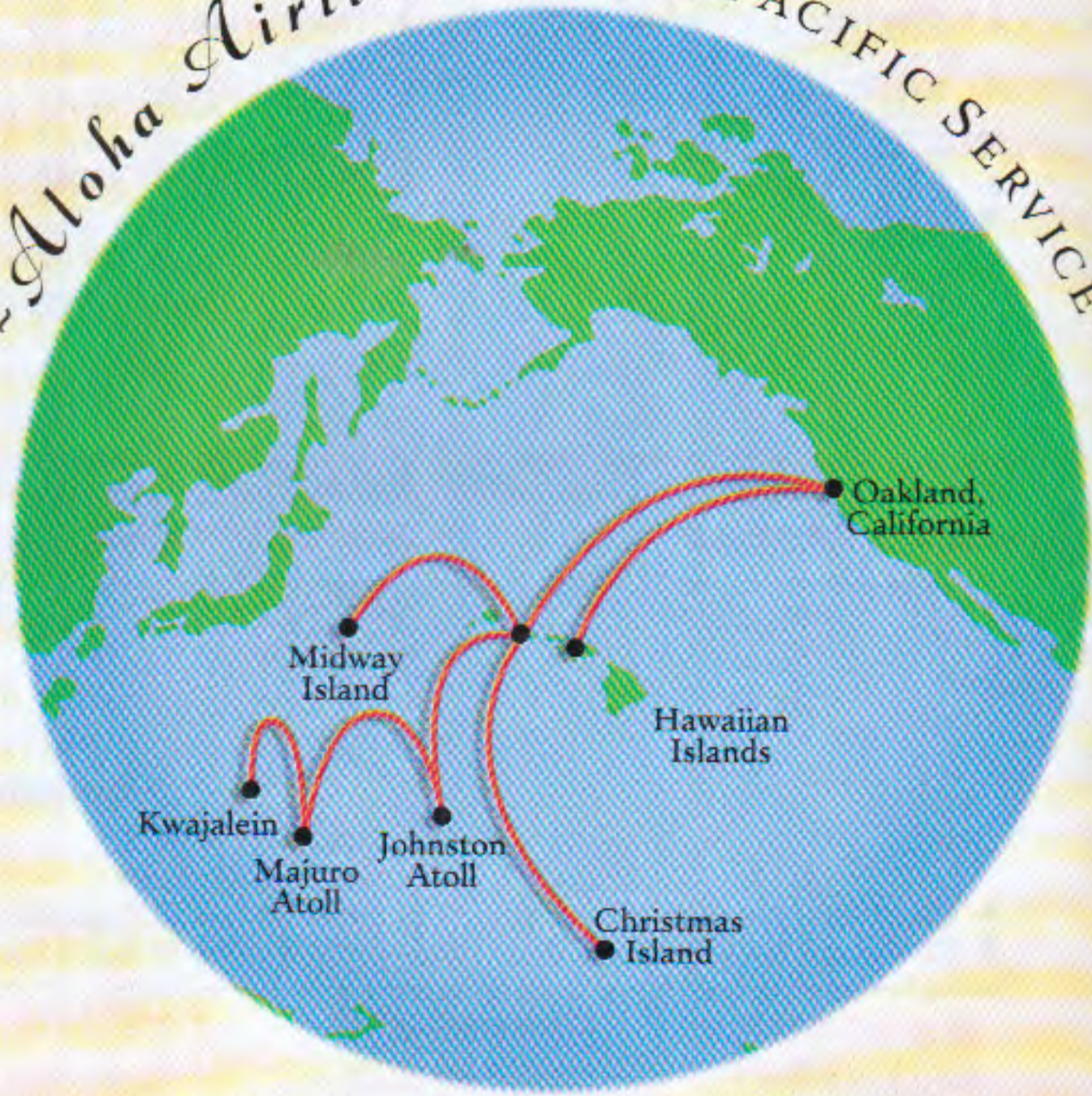
Kauai 245-3691  
Oahu 484-1111

Kona 935-5771

*~ Aloha Airlines & Island Air INTER-ISLAND SERVICE ~*



*~ Aloha Airlines TRANS-PACIFIC SERVICE ~*




ALOHA 737-700




ISLAND AIR DASH 8



ALOHA 737-200

 ROUTES FLOWN BY ISLAND AIR

 ROUTES FLOWN BY ALOHA AIRLINES

# INTERISLAND SERVICE FROM



A I R L I N E S

Continued from page 9

## KONA ↔ KAHULUI

### KONA → KAHULUI

| Leave  | Arrive | Flt. No. | Stops |
|--------|--------|----------|-------|
| 10:30a | 10:58a | 29       |       |
| 1:51p  | 2:20p  | 217      |       |
| 5:35p  | 6:04p  | 233      |       |

### KAHULUI → KONA

| Leave  | Arrive | Flt. No. | Stops |
|--------|--------|----------|-------|
| 8:45a  | 9:13a  | 204      |       |
| 12:30p | 12:58p | 30       |       |
| 12:45p | 1:13p  | 122      |       |
| 4:15p  | 4:42p  | 112      |       |

## HILO ↔ KONA

### HILO → KONA

| Leave | Arrive | Flt. No. | Stops |
|-------|--------|----------|-------|
| 8:45a | 9:11a  | 103      |       |
| 9:35a | 10:01a | 29       |       |

### KONA → HILO

| Leave | Arrive | Flt. No. | Stops |
|-------|--------|----------|-------|
| 5:10p | 5:37p  | 112      |       |



### Responsibility for departures, arrivals and connections

Schedules subject to change without notice. Schedules do not allow for abnormal air traffic, unscheduled maintenance and ground delays. Aloha Airlines is not responsible for damages resulting from the failure to depart or arrive at times stated in this timetable, nor for errors herein, nor for failure to make connections.

**Check-in and boarding times**—Passengers are **required** to have **completed** the check-in process at the departure airport **at least 30 minutes** prior to scheduled departure time. Passengers are requested to be at the boarding gate **at least 15 minutes** prior to scheduled departure time. Reservations are subject to cancellation and passengers may not be eligible for denied boarding compensation when these requirements are not met.

**Carry-on baggage**—Limited to items that will fit underneath the passenger's seat or in the overhead compartment. 1) Maximum size of 8 x 14 x 22 inches; 2) Maximum weight of 20 pounds; 3) Boogie boards, strollers, coolers with ice and guitars in hardsided cases are not permitted as carry-on baggage.

**Checked baggage**—Checked baggage should be locked. Regulations require name identification on the outside. Our liability for checked baggage is limited to \$2,500 per passenger and excludes certain items. Never place money, cameras, fragile articles or valuable items such as medicines, keys, jewelry, passports or other important papers in luggage you plan to check.

Hilo 935-5771  
Maui 244-9071

Kauai 245-3691  
Oahu 484-1111

Kona 935-5771

### AIR FREIGHT

Hilo: 935-6490  
M-F, 6 a.m.-7 p.m.;  
Sa-Su, 6 a.m.-1:30 p.m.

Kauai: 245-2560  
M-F, 6 a.m.-7 p.m.;  
Sa-Su, 6 a.m.-noon

Kona: 329-2511  
M-F, 6 a.m.-7 p.m.;  
Sa 6 a.m.-1 p.m.;  
Su noon-2 p.m.

Maui: 877-2025  
M-F, 6 a.m.-7 p.m.;  
Sa 6 a.m.-1 p.m.;  
Su 7 a.m.-1 p.m.

Oahu: 836-4191  
M-F, 6 a.m.-9 p.m.;  
Sa-Su, 6 a.m.-5 p.m.



HONOLULU 6:00 P.M.

MAUI 3:00 P.M.

Fast next flight shipping from \$11.95. Send any small package counter-to-counter on over 180 Aloha flights daily.





# INTERISLAND SERVICE FROM

# Island Air

EFFECTIVE JULY 2, 2000 Schedule subject to change without notice.

## HONOLULU ↔ LANAI

### HONOLULU → LANAI

| Leave  | Arrive | Flt. No. | Stops |
|--------|--------|----------|-------|
| 7:15a  | 7:45a  | 1632     |       |
| 8:40a  | 9:10a  | 1628     |       |
| 10:15a | 10:45a | 1620     |       |
| 11:30a | 12:00n | 1636     |       |
| 12:10p | 12:40p | 1638     |       |
| 1:50p  | 2:20p  | 1304     |       |
| 3:05p  | 3:35p  | 1624     |       |
| 3:55p  | 4:25p  | 1646     |       |
| 5:25p  | 5:55p  | 1630     |       |
| 6:35p  | 7:05p  | 1640     |       |

### LANAI → HONOLULU

| Leave  | Arrive | Flt. No. | Stops |
|--------|--------|----------|-------|
| 8:00a  | 8:30a  | 1633     |       |
| 9:25a  | 9:55a  | 1629     |       |
| 11:00a | 11:30a | 1621     |       |
| 12:15p | 12:45p | 1637     |       |
| 12:55p | 1:25p  | 1639     |       |
| 3:50p  | 4:20p  | 1625     |       |
| 4:40p  | 5:10p  | 1647     |       |
| 6:10p  | 6:40p  | 1631     |       |
| 7:20p  | 7:50p  | 1641     |       |

## HONOLULU ↔ MOLOKAI

### HONOLULU → MOLOKAI

| Leave  | Arrive | Flt. No. | Stops |
|--------|--------|----------|-------|
| 5:50a  | 6:15a  | 1126     |       |
| 6:15a  | 6:40a  | 1224     |       |
| 8:50a  | 9:15a  | 1136     |       |
| 10:05a | 10:30a | 1162     |       |
| 10:45a | 11:10a | 1138     |       |
| 12:15p | 12:40p | 1164     |       |
| 1:05p  | 1:30p  | 1230     |       |
| 1:40p  | 2:05p  | 1132     |       |
| 3:45p  | 4:10p  | 1222     |       |
| 6:20p  | 6:45p  | 1152     |       |

### MOLOKAI → HONOLULU

| Leave  | Arrive | Flt. No. | Stops |
|--------|--------|----------|-------|
| 6:30a  | 6:55a  | 1127     |       |
| 8:20a  | 8:45a  | 1225     |       |
| 9:30a  | 9:55a  | 1137     |       |
| 10:45a | 11:10a | 1163     |       |
| 11:25a | 11:50a | 1139     |       |
| 12:55p | 1:20p  | 1165     |       |
| 2:20p  | 2:45p  | 1133     |       |
| 3:10p  | 3:35p  | 1231     |       |
| 5:50p  | 6:15p  | 1421     |       |
| 7:00p  | 7:25p  | 1153     |       |

## HONOLULU ↔ KAHULUI

### HONOLULU → KAHULUI

| Leave | Arrive | Flt. No. | Stops |
|-------|--------|----------|-------|
| 6:15a | 7:20a  | 1224     | 1     |
| 1:05p | 2:10p  | 1230     | 1     |
| 3:45p | 4:50p  | 1222     | 1     |

### KAHULUI → HONOLULU

| Leave | Arrive | Flt. No. | Stops |
|-------|--------|----------|-------|
| 7:40a | 8:45a  | 1225     | 1     |
| 2:30p | 3:35p  | 1231     | 1     |
| 5:10p | 6:15p  | 1421     | 1     |

## HONOLULU ↔ KAPALUA

### HONOLULU → KAPALUA

| Leave  | Arrive | Flt. No. | Stops |
|--------|--------|----------|-------|
| 7:00a  | 7:32a  | 1552     |       |
| 9:05a  | 9:37a  | 1592     |       |
| 10:30a | 11:02a | 1564     |       |
| 11:50a | 12:22p | 1568     |       |
| 2:00p  | 2:32p  | 1520     |       |
| 4:40p  | 5:12p  | 1560     |       |

### KAPALUA → HONOLULU

| Leave  | Arrive | Flt. No. | Stops |
|--------|--------|----------|-------|
| 7:48a  | 8:20a  | 1553     |       |
| 9:53a  | 10:25a | 1593     |       |
| 11:18a | 11:50a | 1565     |       |
| 12:38p | 1:10p  | 1569     |       |
| 2:48p  | 3:20p  | 1521     |       |
| 4:30p  | 5:02p  | 1305     |       |
| 5:28p  | 6:00p  | 1561     |       |

Dash-8 Flights

Oahu 484-2222

Neighbor Islands (800) 652-6541

Continental U.S. (800) 323-3345

# INTERISLAND SERVICE FROM

# Island Air

## HONOLULU ↔ KONA

### HONOLULU → KONA

| Leave | Arrive | Flt. No. | Stops |
|-------|--------|----------|-------|
| 1:50p | 3:10p  | 1304     | 1     |

### KONA → HONOLULU

| Leave | Arrive | Flt. No. | Stops |
|-------|--------|----------|-------|
| 3:30p | 5:02p  | 1305     | 1     |

## KAHULUI ↔ MOLOKAI

### KAHULUI → MOLOKAI

| Leave | Arrive | Flt. No. | Stops |
|-------|--------|----------|-------|
| 7:40a | 8:05a  | 1225     |       |
| 2:30p | 2:55p  | 1231     |       |
| 5:10p | 5:35p  | 1421     |       |

### MOLOKAI → KAHULUI

| Leave | Arrive | Flt. No. | Stops |
|-------|--------|----------|-------|
| 6:55a | 7:20a  | 1224     |       |
| 1:45p | 2:10p  | 1230     |       |
| 4:25p | 4:50p  | 1222     |       |

## KONA → KAPALUA

| Leave | Arrive | Flt. No. | Stops |
|-------|--------|----------|-------|
| 3:30p | 4:15p  | 1305     |       |

## LANAI → KONA

| Leave | Arrive | Flt. No. | Stops |
|-------|--------|----------|-------|
| 2:35p | 3:10p  | 1304     |       |

Dash-8 Flights



### Responsibility for departures, arrivals and connections

Island Air is not responsible for damages resulting from the failure to depart or arrive at times stated in this timetable, nor for errors herein, nor for failure to make connections. Schedules subject to change without notice. Schedules do not allow for abnormal air traffic, unscheduled maintenance and ground delays.

### Check-in and boarding times

Passengers are **required** to have **completed** the check-in process at least **45** minutes prior to scheduled departure time. Due to limited size and capacity of the Twin Otter aircraft, Island Air requires a minimum of **15** minutes to make necessary mathematical calculations to ensure the aircraft is within safe limitations for weight and balance. To accept an additional passenger within less than **15** minutes of departure would require recalculation of our weight and balance, which would cause a delay for the other passengers on the flight. Reservations not claimed **15** minutes prior to scheduled departure time are subject to cancellation and passengers may not be eligible for denied boarding compensation when these requirements are not met.

### Checked baggage

Checked baggage should be locked. Regulations require name identification on the outside. Liability for checked baggage is limited to \$2,500 per passenger and excludes certain items. Do not place money, jewelry, electronic or camera equipment, or other expensive items in baggage that is to be checked. Free luggage allowance (including golf bags) is 44 pounds. Excess or oversized baggage will be handled for \$10 per piece. Specialty items under 6 feet including bicycles, surfboards or pets will be handled for an additional fee. All excess baggage and specialty items will be accommodated on a **space available** basis.

Oahu 484-2222

Neighbor Islands (800) 652-6541

Continental U.S. (800) 323-3345

## PARTNERSHIP SERVICE FROM ALOHA AIRLINES AND UNITED AIRLINES

Aloha Airlines is pleased to announce its **Partnership Service** in conjunction with United Airlines. Working as a team, Aloha and United have scheduled convenient connections in Honolulu to major U.S. mainland destinations as well as selected destinations in Asia. The following timetable shows our convenient **Partnership Service** routings between the Neighbor Islands and points served by United from Honolulu.

Interisland **Partnership Service** will be operated by Aloha Airlines as United Airlines flights and are designated by flight numbers in the 4000 to 4499 range. Within Hawaii, you will continue to fly on Aloha's modern Boeing 737-200 aircraft, and to arrive and depart from the Aloha terminal on all islands.

Flight reservations and ticketing information for all **Partnership Service** flights can be obtained by calling United Airlines at the following numbers: **domestic 800-241-6522, international 800-538-2929.**

### Airport Check-in

Passengers flying on interisland **Partnership Service** flights must check in at Aloha Airlines airport counters. As a reminder, all baggage to be checked from Lihue, Kahului, Kona and Hilo through to a final destination outside Hawaii must first pass through agricultural inspection. Agricultural inspection stations are operated by the USDA in airport lobbies, near the Aloha Airlines ticket counters.

*Schedule subject to change without notice.*

### HILO, HAWAII ↔ CHICAGO

#### HILO → CHICAGO

| Leave | Arrive | Flt. No. | Stops |
|-------|--------|----------|-------|
| 1:34p | 5:17a  | ◆4297/44 | 1     |

#### CHICAGO → HILO

| Leave  | Arrive | Flt. No. | Stops |
|--------|--------|----------|-------|
| 10:00a | 3:43p  | 43/◆4294 | 1     |

### HILO, HAWAII ↔ LOS ANGELES

#### HILO → LOS ANGELES

| Leave | Arrive | Flt. No. | Stops |
|-------|--------|----------|-------|
| 9:00a | 9:11p  | ◆4243/52 | 1     |
| 9:28a | 9:11p  | ◆4245/52 | 1     |
| 6:35p | 5:25a  | ◆4257/54 | 1     |
| 8:00p | 7:10a  | ◆4259/56 | 1     |

#### LOS ANGELES → HILO

| Leave | Arrive | Flt. No. | Stops |
|-------|--------|----------|-------|
| 8:40a | 2:08p  | 53/◆4248 | 1     |
| 2:35p | 7:34p  | 55/◆4258 | 1     |

### HILO, HAWAII ↔ SAN FRANCISCO

#### HILO → SAN FRANCISCO

| Leave | Arrive | Flt. No. | Stops |
|-------|--------|----------|-------|
| 7:40a | 5:47p  | ◆4251/58 | 1     |
| 9:00a | 8:18p  | ◆4243/60 | 1     |
| 9:28a | 8:18p  | ◆4245/60 | 1     |
| 6:35p | 5:24a  | ◆4257/62 | 1     |
| 8:00p | 6:23a  | ◆4259/64 | 1     |

#### SAN FRANCISCO → HILO

| Leave | Arrive | Flt. No. | Stops |
|-------|--------|----------|-------|
| 8:35a | 1:08p  | 67/◆4290 | 1     |
| 2:30p | 7:34p  | 59/◆4258 | 1     |

### HILO, HAWAII ↔ TOKYO, NARITA AIRPORT

#### HILO → NARITA AIRPORT

| Leave | Arrive | Flt. No.  | Stops |
|-------|--------|-----------|-------|
| 9:00a | 1:55p  | ◆4243/827 | 1     |

#### NARITA AIRPORT → HILO

| Leave | Arrive | Flt. No.  | Stops |
|-------|--------|-----------|-------|
| 7:45p | 10:54a | 826/◆4246 | 1     |

### KAHULUI, MAUI ↔ CHICAGO

#### KAHULUI → CHICAGO

| Leave | Arrive | Flt. No. | Stops |
|-------|--------|----------|-------|
| 2:05p | 5:17a  | ◆4227/44 | 1     |

#### CHICAGO → KAHULUI

| Leave  | Arrive | Flt. No. | Stops |
|--------|--------|----------|-------|
| 10:00a | 3:50p  | 43/◆4212 | 1     |

### KAHULUI, MAUI ↔ LOS ANGELES

#### KAHULUI → LOS ANGELES

| Leave  | Arrive | Flt. No. | Stops |
|--------|--------|----------|-------|
| 10:53a | 9:11p  | ◆4261/52 | 1     |
| 7:05p  | 5:25a  | ◆4267/54 | 1     |
| 9:00p  | 7:10a  | ◆4279/56 | 1     |

#### LOS ANGELES → KAHULUI

| Leave | Arrive | Flt. No. | Stops |
|-------|--------|----------|-------|
| 8:40a | 1:05p  | 53/◆4210 | 1     |
| 8:40a | 1:40p  | 53/◆4204 | 1     |
| 2:35p | 7:04p  | 55/◆4292 | 1     |

## PARTNERSHIP SERVICE FROM ALOHA AIRLINES AND UNITED AIRLINES

### KAHULUI, MAUI ↔ SAN FRANCISCO

#### KAHULUI → SAN FRANCISCO

| Leave  | Arrive | Flt. No. | Stops |
|--------|--------|----------|-------|
| 8:10a  | 5:47p  | ◆4273/58 | 1     |
| 10:24a | 8:18p  | ◆4207/60 | 1     |
| 7:30p  | 5:24a  | ◆4253/62 | 1     |
| 8:15p  | 6:23a  | ◆4229/64 | 1     |

#### SAN FRANCISCO → KAHULUI

| Leave | Arrive | Flt. No. | Stops |
|-------|--------|----------|-------|
| 8:35a | 12:50p | 67/◆4262 | 1     |
| 2:30p | 6:40p  | 59/◆4266 | 1     |
| 3:45p | 8:35p  | 61/◆4278 | 1     |

### KAHULUI, MAUI ↔ TOKYO, NARITA AIRPORT

#### KAHULUI → NARITA AIRPORT

| Leave | Arrive | Flt. No.  | Stops |
|-------|--------|-----------|-------|
| 9:00a | 1:55p  | ◆4275/827 | 1     |

#### NARITA AIRPORT → KAHULUI

| Leave | Arrive | Flt. No.  | Stops |
|-------|--------|-----------|-------|
| 7:45p | 10:29a | 826/◆4270 | 1     |

### KONA, HAWAII ↔ CHICAGO

#### KONA → CHICAGO

| Leave | Arrive | Flt. No. | Stops |
|-------|--------|----------|-------|
| 2:10p | 5:17a  | ◆4203/44 | 1     |

#### CHICAGO → KONA

| Leave    | Arrive | Flt. No. | Stops |
|----------|--------|----------|-------|
| ★ 10:00a | 3:40p  | 43/◆4240 | 1     |
| 10:00a   | 4:30p  | 43/◆4284 | 1     |

### KONA, HAWAII ↔ LOS ANGELES

#### KONA → LOS ANGELES

| Leave    | Arrive | Flt. No. | Stops |
|----------|--------|----------|-------|
| 10:10a   | 9:11p  | ◆4231/52 | 1     |
| ★ 10:35a | 9:11p  | ◆4263/52 | 1     |
| 6:40p    | 5:25a  | ◆4283/54 | 1     |
| 8:20p    | 7:10a  | ◆4287/56 | 1     |

#### LOS ANGELES → KONA

| Leave | Arrive | Flt. No. | Stops |
|-------|--------|----------|-------|
| 8:40a | 1:21p  | 53/◆4288 | 1     |
| 2:35p | 7:05p  | 55/◆4282 | 1     |

### KONA, HAWAII ↔ SAN FRANCISCO

#### KONA → SAN FRANCISCO

| Leave    | Arrive | Flt. No. | Stops |
|----------|--------|----------|-------|
| 7:20a    | 5:47p  | ◆4285/58 | 1     |
| 10:10a   | 8:18p  | ◆4231/60 | 1     |
| ★ 10:35a | 8:18p  | ◆4263/60 | 1     |
| 7:30p    | 5:24a  | ◆4289/62 | 1     |
| 8:20p    | 6:23a  | ◆4287/64 | 1     |

#### SAN FRANCISCO → KONA

| Leave | Arrive | Flt. No. | Stops |
|-------|--------|----------|-------|
| 8:35a | 1:21p  | 67/◆4288 | 1     |
| 2:30p | 7:05p  | 59/◆4282 | 1     |
| 3:45p | 7:55p  | 61/◆4276 | 1     |

### KONA, HAWAII ↔ TOKYO, NARITA AIRPORT

#### KONA → NARITA AIRPORT

| Leave | Arrive | Flt. No.  | Stops |
|-------|--------|-----------|-------|
| 8:50a | 1:55p  | ◆4237/827 | 1     |

#### NARITA AIRPORT → KONA

| Leave | Arrive | Flt. No.  | Stops |
|-------|--------|-----------|-------|
| 7:45p | 10:50a | 826/◆4200 | 1     |

### LIHUE, KAUAI ↔ CHICAGO

#### LIHUE → CHICAGO

| Leave | Arrive | Flt. No. | Stops |
|-------|--------|----------|-------|
| 2:30p | 5:17a  | ◆4214/44 | 1     |

#### CHICAGO → LIHUE

| Leave  | Arrive | Flt. No. | Stops |
|--------|--------|----------|-------|
| 10:00a | 3:36p  | 43/◆4227 | 1     |

◆ Flight operated by Aloha Airlines as a United Airlines flight.

▶ Effective July 2-Aug. 20 Daily; Aug. 21-Open Fr-Sa-Su only.

★ Effective July 2-Aug. 20 Fr-Sa-Su only.

**Domestic flights: 800-241-6522**  
**International flights: 800-538-2929**

**PARTNERSHIP SERVICE  
FROM ALOHA AIRLINES AND UNITED AIRLINES**

**LIHUE, KAUAI ↔ LOS ANGELES**

**LIHUE → LOS ANGELES**

| Leave  | Arrive | Flt. No. | Stops |
|--------|--------|----------|-------|
| 10:55a | 9:11p  | ◆4236/52 | 1     |
| 7:05p  | 5:25a  | ◆4278/54 | 1     |
| 9:00p  | 7:10a  | ◆4230/56 | 1     |

**LOS ANGELES → LIHUE**

| Leave | Arrive | Flt. No. | Stops |
|-------|--------|----------|-------|
| 8:40a | 1:30p  | 53/◆4221 | 1     |
| 2:35p | 8:00p  | 55/◆4265 | 1     |

**LIHUE, KAUAI ↔ SAN FRANCISCO**

**LIHUE → SAN FRANCISCO**

| Leave  | Arrive | Flt. No. | Stops |
|--------|--------|----------|-------|
| 8:10a  | 5:47p  | ◆4234/58 | 1     |
| 10:25a | 8:18p  | ◆4218/60 | 1     |
| 7:05p  | 5:24a  | ◆4278/62 | 1     |
| 8:25p  | 6:23a  | ◆4232/64 | 1     |

**SAN FRANCISCO → LIHUE**

| Leave | Arrive | Flt. No. | Stops |
|-------|--------|----------|-------|
| 8:35a | 1:01p  | 67/◆4239 | 1     |
| 2:30p | 6:40p  | 59/◆4277 | 1     |
| 3:45p | 8:00p  | 61/◆4265 | 1     |

**LIHUE, KAUAI ↔ TOKYO, NARITA AIRPORT**

**LIHUE → NARITA AIRPORT**

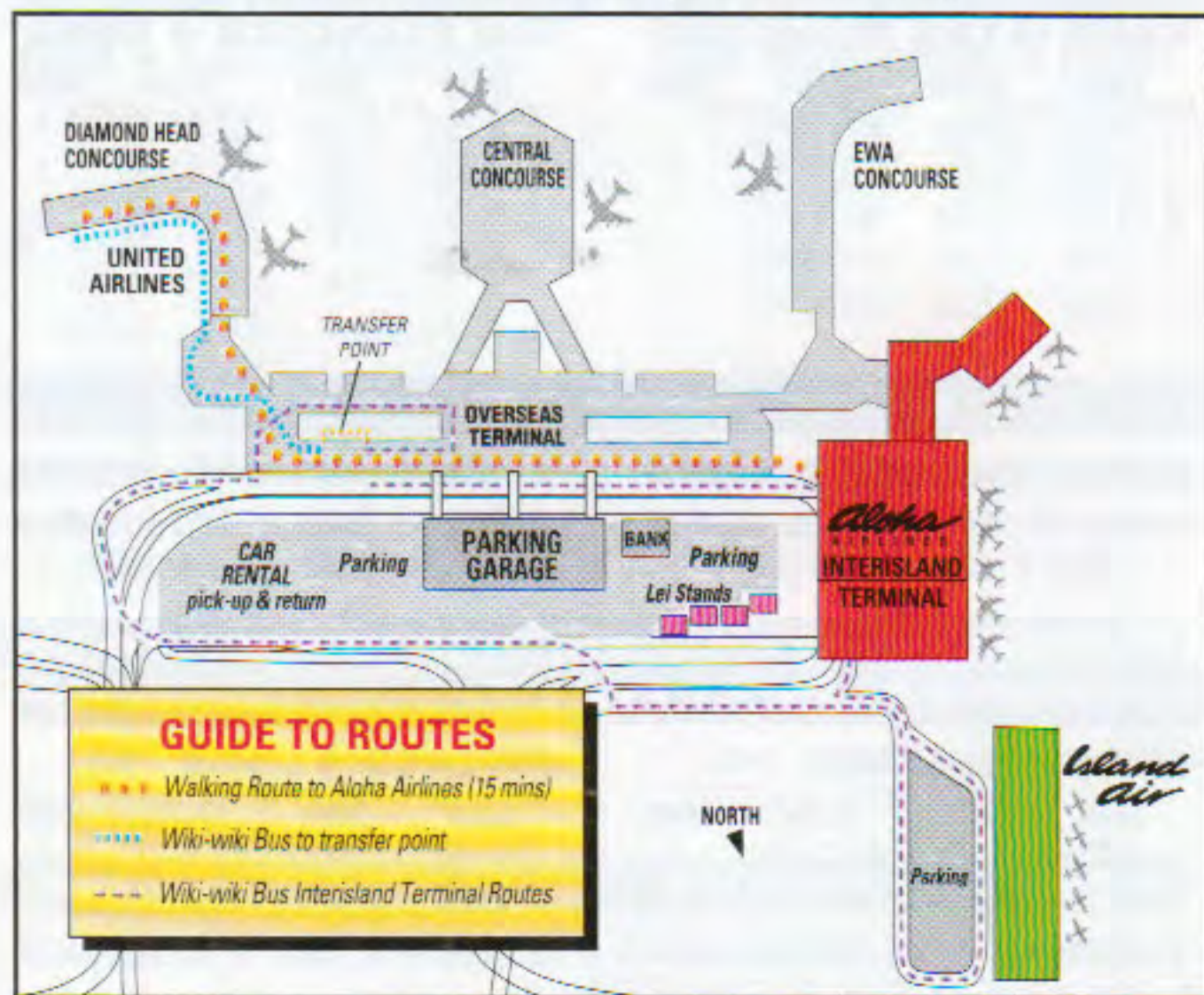
| Leave | Arrive | Flt. No.  | Stops |
|-------|--------|-----------|-------|
| 9:12a | 1:55p  | ◆4246/827 | 1     |

**NARITA AIRPORT → LIHUE**

| Leave | Arrive | Flt. No.  | Stops |
|-------|--------|-----------|-------|
| 7:45p | 10:30a | 826/◆4237 | 1     |

- ◆ Flight operated by Aloha Airlines as a United Airlines flight.
- ▶ Effective July 2-Aug. 20 Daily; Aug. 21-Open Fr-Sa-Su only.
- ★ Effective July 2-Aug. 20 Fr-Sa-Su only.

**Honolulu International Airport Terminal Map**



**Domestic flights: 800-241-6522  
International flights: 800-538-2929**

**ALOHA AIRLINES RESERVATIONS**

Hilo: 935-5771

Kauai: 245-3691

Kona: 935-5771

Mau: 244-9071

Oahu: 484-1111

Hong Kong:

(852) 2826-9118

Japan

Osaka: (06) 6341-7241

Tokyo: (03) 3216-5877

U.S. Mainland & Canada:

(800) 367-5250

or (877) 879-2564

Marshall Islands:

(888) 477-7010

From Oahu only: 485-2220

**INTERNET**

www.alohaairlines.com

**TELECOMMUNICATION DEVICE**

**FOR THE DEAF**

Oahu: 486-9321

Neighbor Islands &

US Mainland: (800) 554-4833

**E-TICKET ELIMINATES HAVING TO CARRY A TICKET.  
(IF ONLY WE HAD INVENTED E-LUGGAGE.)**

With our new e-ticket, you simply call Aloha Airlines, Island Air or your travel agent, make your reservations, pay over the phone with a major credit card, then show your photo ID to check in.

