

BETWEEN THE ISLANDS

Fly

TPA

Aloha AIRLINE
HAWAII

ONE OF THE SCHEDULED AIRLINES OF THE UNITED STATES

DECEMBER, 1952

MELE KALIKIMAKA



FULL FARES

	Honolulu	Kauai	Molokai	Maui	Upolu	Kona	Hilo
HONOLULU		\$ 8.50	\$ 6.50	\$ 8.50	\$10.50	\$11.50	\$13.50
KAUAI	\$ 8.50		11.50	13.50	15.50	16.50	18.50
MOLOKAI	6.50	11.50		6.00			11.50
MAUI	8.50	13.50	6.00				10.00
UPOLU	10.50	15.50				5.50	
KONA	11.50	16.50					
HILO	13.50	18.50	11.50	10.00			

A ROUNDTRIP FARE IS TWICE THE ONE-WAY FARE
ADD 15% U.S. TAX TO ALL RATES

CALENDAR FOR 1/2 FARE FAMILY TRAVEL

DECEMBER						
Sun	Mon	Tue	Wed	Thu	Fri	Sat
	1	2	3	4	5	6
7	8	9	10	11	12	13
14	15	16	17	18	19	20
21	22	23	24	25	26	27
28	29	30	31			

JANUARY						
Sun	Mon	Tue	Wed	Thu	Fri	Sat
				1	2	3
4	5	6	7	8	9	10
11	12	13	14	15	16	17
18	19	20	21	22	23	24
25	26	27	28	29	30	31

FEBRUARY						
Sun	Mon	Tue	Wed	Thu	Fri	Sat
1	2	3	4	5	6	7
8	9	10	11	12	13	14
15	16	17	18	19	20	21
22	23	24	25	26	27	28

MARCH						
Sun	Mon	Tue	Wed	Thu	Fri	Sat
1	2	3	4	5	6	7
8	9	10	11	12	13	14
15	16	17	18	19	20	21
22	23	24	25	26	27	28
29	30	31				

Note days that are shaded. On these days, a full fare ticket for one parent entitles the other parent and all children under 22 years to travel on 1/2 fare tickets. This is the popular 1/2 fare family plan, featured by the Aloha Airline.

TPA
Aloha AIRLINE
HAWAII

BETWEEN THE ISLANDS

Fly
TPA **Aloha AIRLINE**
HAWAII

ONE OF THE SCHEDULED AIRLINES OF THE UNITED STATES

DECEMBER, 1952

MELE KALIKIMAKA



KONA

the place for Fishing or Beachcombing!

\$8

FIRST CLASS ROOMS!
BUDGET PRICES!

\$5

double AT KAILUA-KONA HOTEL AND COTTAGES single

ENJOY HAWAII ON A FAMOUS
"TRADE WIND TOUR"

International Travel Service

Outrigger Arcade bet. Royal & Moana Hotels

Phone 9-1196

Edgewater Hotel Office—92-3215

With Kamaainas and Visitors Alike
Hawaii's most appealing and unique
Vacation Spot

The Volcano House

In the Heart of Hawaii National Park



And for your Crescent City Stop-over

The Hilo Hotel

Modern Comfortable Reasonable

Long a favorite with commercial travelers



For reservations write direct
Or consult any Travel Agent

in HILO it's HARA'S U-DRIVE

"Your Friendly U-Drive Man"

Informations & Reservations
HONOLULU HILO

66801

2803

Latest Models - Free Delivery

HARA'S
CAR RENTAL
SERVICES

Hilo - 776 Kamehameha



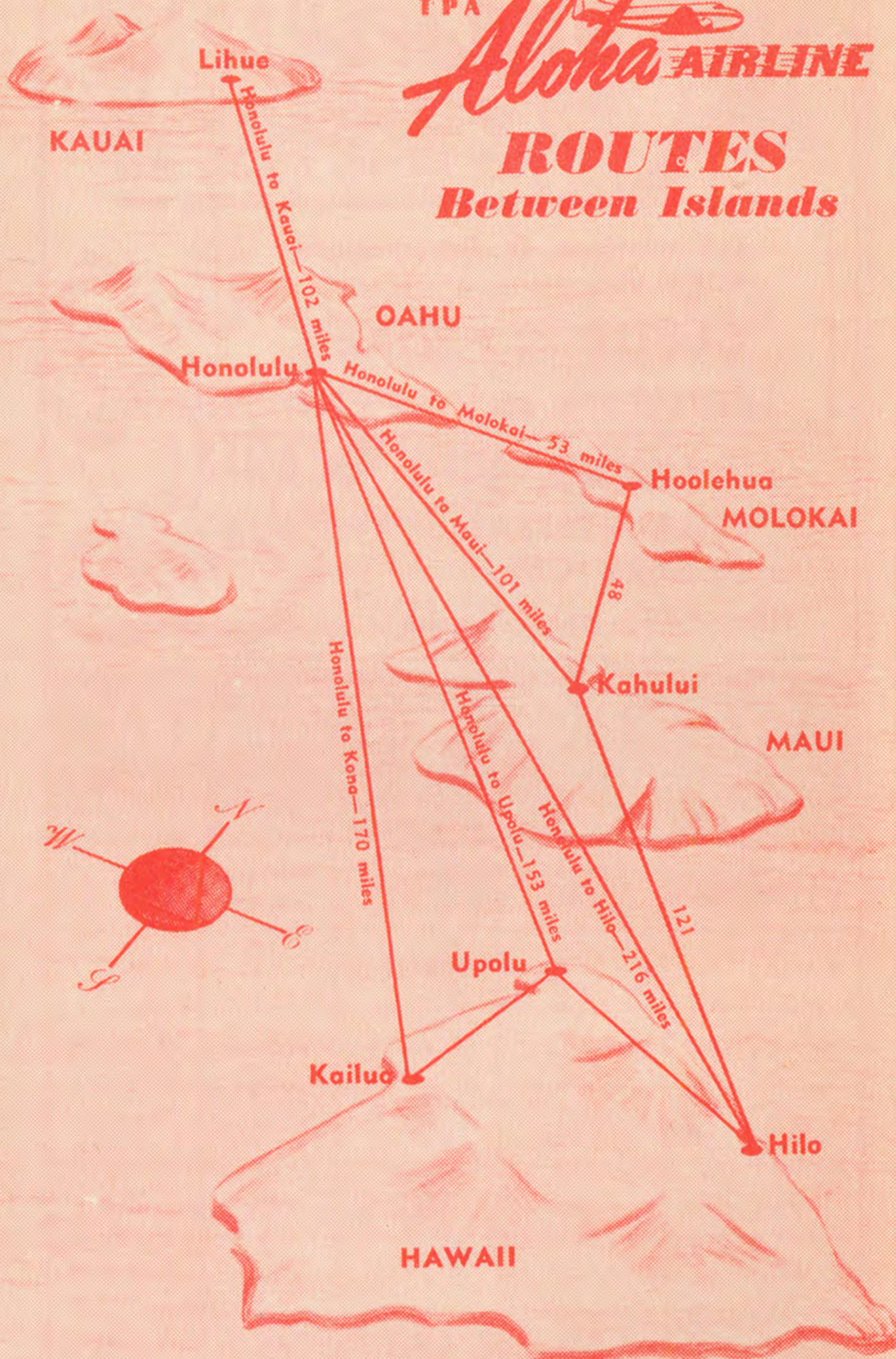
Offices On All Islands

POINT	OFFICE	TELEPHONE	AIRPORT	TELEPHONE
HONOLULU	King and Bethel	63591	Overseas Terminal	83911
KAUAI	Lihue Opp. County Bldg	383-384	Lihue	4511
MOLOKAI	Hoolehua	2-W-74	Hoolehua	2-W-74
MAUI	Wailuku 2068 Main	939	Kahului	72141
UPOLU PT.	Kohala	533	Upolu	533
KONA	Kainaliu	3-2762	Kailua	4-W-741
HILO	Hilo 116 Kamehameha	3393	Hilo	5331

TPA

Aloha AIRLINE

ROUTES
Between Islands



**POLYNESIAN
CHRISTMAS
IS FESTIVE AFFAIR**



Vacationers who swap "Merry Christmas" for Hawaii's "Mele Kalikimaka" will find a holiday season bright with traditional customs and Polynesian-oriental pageantry.

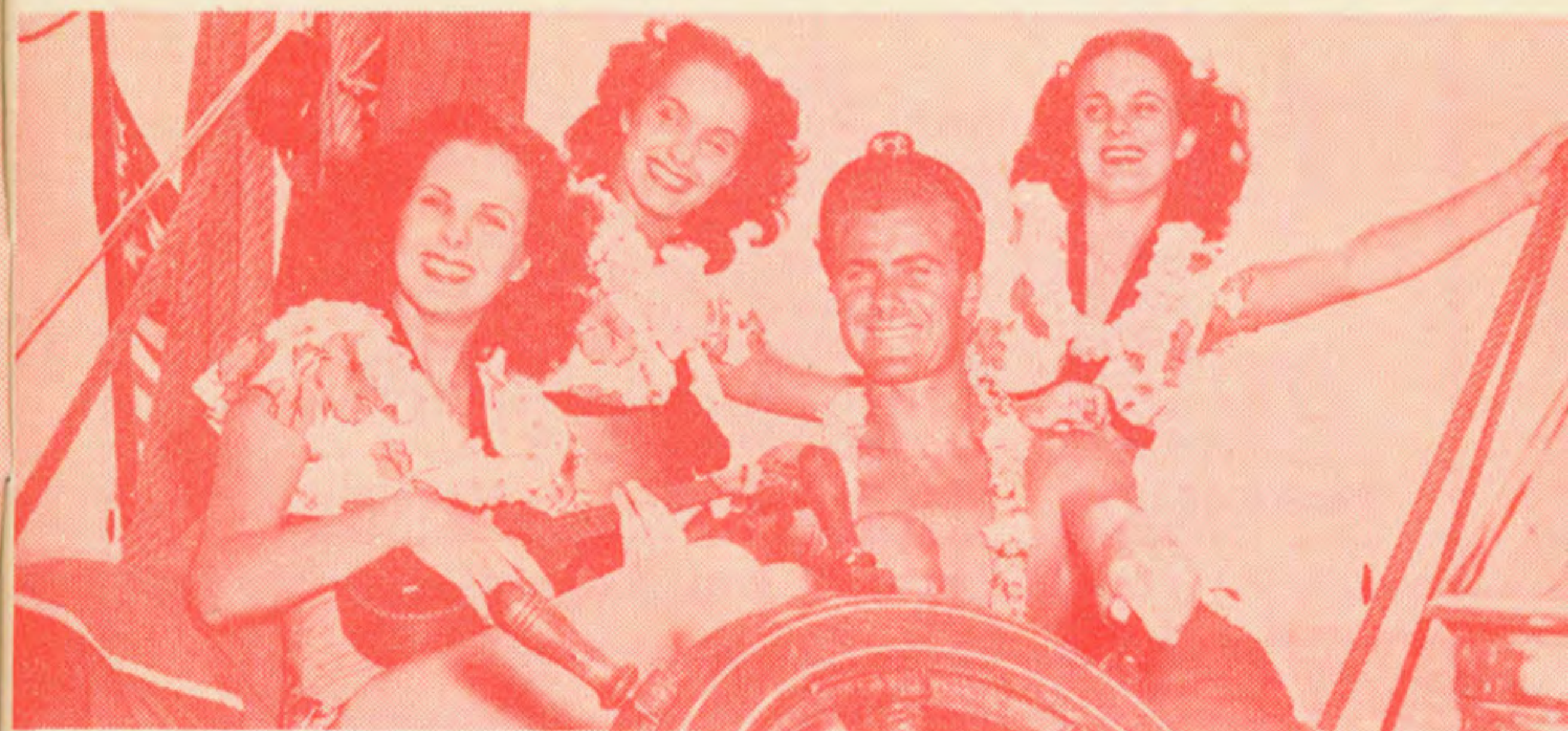
While palms are more common than pines on the island landscape and snow is unknown except at the top of 13,000-foot Mauna Kea and Mauna Loa, Christmas and New Year's are celebrated as briskly as in colder climates.

Travelers who don't think it's Christmas without a Christmas tree can enjoy firs shipped in by the thousands from the Pacific Northwest. Nearly every Hawaiian home is aglow with Christmas lights.

Visitors more versatile in their holidaying admire island-fashioned decorations of driftwood, tropic berries and exotic flowers.

Poinsettias, the familiar Christmas flowers that are potted plants to most mainlanders, flourish in Honolulu gardens each December and in some sections of the city grow rooftop high.

Holiday pageants of the melting-pot islands are en-



BOATING ON CHRISTMAS day and strumming "Jingle Bells" on the ukulele—a real holiday treat.

acted by youngsters of many races, telling with innocence of racial prejudice the holy story.

Hawaiian, Filipino, Japanese, Korean, Caucasian, Chinese, Puerto Ricans and Portuguese go together to Iolani palace a few evenings before Christmas for a traditional community pageant.

Oriental exuberance infects the city New Year's Eve. Following the lead of the Chinese, thousands of islanders explode firecrackers and set off Roman candles and rockets.

From Pearl Harbor to Diamond Head the city is a 10-mile blaze of color and brilliant flashes.

Konahuanui Is Highest Peak In Koolau Range

The highest peak in the lofty and beautiful Koolau range on the Island of Oahu, is Konahuanui. Rearing its crags 3,150 feet into the clouds which nestle around the crown, Konahuanui towers over the head of the Nuuanu valley.

There the Koolau range drops in sheer cliffs to the shelf land below and to the pounding surf.

On the leeward or western side of the Koolau range, the mountains make a wonderful backdrop for the city of Honolulu.

Oahu's oldest range of mountains, the Waianae, has a lofty peak, Mt. Kaala, which rises to a height of 4,030 feet.

Agent
Trans-Pacific Passenger Conference
International Air Transportation Assn.

Cable Address:
Hontravel, Honolulu
Hontravel, Tokyo

The Honolulu Travel Service Ltd.

Phone 62395 - 36 S. Kukui Street - Honolulu, T. H.

Authorized travel agent

T. KAMEDA, Gen. Mgr.

Nakamura Hotel, Tohoku Hotel, Kawasaki Hotel,
Aloha Hotel, Hawaiiya Hotel.

Calendar Of Coming Events ---Things To Do In Hawaii



MONDAY, DECEMBER 1

Private orchid garden tour, 10 a.m. from Waikiki. (Mondays).

TUESDAY, DECEMBER 2

Honolulu Symphony's chamber music concert, 8 p.m. (Regular concerts Dec. 14, 16).

WEDNESDAY, DECEMBER 3

Barbershop singing with SPEBQSA, Inc., 7:30 p.m. (Wednesdays).

THURSDAY, DECEMBER 4

Buffet luncheon-style show, 12:30 p.m., Halekulani hotel. (Thursdays).

SUNDAY, DECEMBER 7

Bodhi Day (Buddhist) sunrise ceremonies at Waikiki.

MONDAY, DECEMBER 8

Ruth Ann Ayers' shopping tour and luncheon, 10 a.m. from Waikiki. (Weekdays).

TUESDAY, DECEMBER 9

Waikiki glassbottom boat cruises from Ala Moana yacht harbor (Daily).

WEDNESDAY, DECEMBER 10

Square dance, 8-10 p.m., Ala Wai club. (Wednesdays).



"Oldest Chop Sui House In Hawaii"

OPEN 7 DAYS A WEEK - 10:30 A.M. TO 9:00 P.M.

TELEPHONES 57260-57166

Cor. Hotel & Maunakea Sts.
In the Heart of Chinatown

Honolulu, Hawaii



SUNDAY, DECEMBER 14

Luau (native feast), 6:30 p.m., Don the Beachcomber. (Sundays).

MONDAY, DECEMBER 15

Mrs. W. J. Wasson's shopping tour and Japanese luncheon. (Mondays through Wednesdays).

WEDNESDAY, DECEMBER 17

Oahu prison tour, 10 a.m. (Wednesdays).

THURSDAY, DECEMBER 18

Love's bakery Kapahulu plant open house, 1-5 p.m. (Weekdays).

FRIDAY, DECEMBER 19

Princess Bernice Pauahi Bishop birthday observance at Royal mausoleum, sponsored by Hawaiian societies and Kamehameha schools.

THURSDAY, DECEMBER 25

Surfboard paddling races, 2 p.m., Waikiki beach.

Many Variations For Name of Garden Isle

There is a story to tell—how Kauai got its name.

It was on Kauai that Capt. James Cook of the British navy landed to discover Hawaii for the rest of the world. The ill-fated Capt. Cook mentioned Kauai frequently in his records, but he called the island Atooi. Capt. George Vancouver called the island Attowai, and Malte-Brun, in his published work on Hawaii in 1827, called it Atowai.

The Capt. Cook spelling appealed to the missionaries who arrived in 1820, but in 1823 they changed the spelling to Tauwai and in 1824, Tauai. For many years, the dialectic "k" and "t" were used until, for the sake of uniformity, the "k" was accepted and Kauai it has been ever since.

Some Hawaiian histories say the name Kauai means "to light upon" or "to dry in the sun," possibly from the driftwood which came upon Kauai's beautiful shores more often than on any other island in the territory.



Bill Whaley



Jack Miller



JACK & BILL'S JOYNT
"Where Good Sports Meet"
2336 N. KING STREET
PHONE 8-7679
DISPENSER GENERAL

SEASON'S GREETINGS

COCO PALM Lodge

*"By the Sea at Wailua"
Kauai*

**SWIMMING BOATING
GOLFING
GOOD FOOD
BAR SERVICE**

Make reservations at any
Aloha Airline ticket office





REED'S BAY at Hilo is a picturesque haven for small craft and a real eye-catcher to tourists and camera fans.

ONLY TPA ALOHA AIRLINE among the local airlines in Hawaii offers its passengers the advantages of the luxurious Main Overseas Terminal at Honolulu International Airport. These advantages include a restaurant open 24 hours a day, cocktail bar, flower and gift shops, cable office, showers, barber shop, nursery for children, redcap service.



for
**REAL HAWAIIAN
ENTERTAINMENT**

- SEE ● Authentic Hulas
● Spectacular Fire Dance
● Exciting Sword Dance

Excellent Food ● Tropical Drinks

- No Cover Charge

Waikiki Tavern

2437 Kalakaua Ave.

PO LA'I E (Silent Night)

(Translated into Hawaiian by Rev. and
Mrs. Stephen Desha)

Po la'i e, Po ka-ma-ha-o
Ma-lu-hi-a, ma-la-ma-la-ma,
Ka Ma-ku-a-hi-ne a-lo-ha e,
Me ke Ke-i-ki he-mo-le-le e,
Moe me ka ma-lu-hi-a la-ni,
Moe me ka ma-lu-hi-a la-ni.

Po la'i e, Po ka-ma-ha-o,
O-ni na ka-hu-hi-pa e,
I ko ka la-ni na-ni no,
Me-le na a-ne-la, 'Ha-le-lu-ia',
Ha-nau-i-a Kris-to, ka Ha-ku,
Ha-nau-i-a Kris-to, ka Ha-ku.

Merry Christmas, Hawaiian-style: Mele Kalikimaka.

Happy New Year: Hauoli Makahiki Hou.

Suggested toasts for the holiday parties: Aloha kakou (Greetings, everybody); response, Mahalo nui loa (Many thanks). Kamau (Here's how). Hauoli maoli oe (Here's to your happiness). Okole maluna (Bottoms up).



See All Of Hawaii

Travel with native
Hawaiians who know
the Islands best.

**HAWAIIAN TOUR
& TRAVEL SERVICE**

on the beach at Waikiki

2234 Kalakaua Ave. Phones 902115-915135-906195

Legendary Shark Queen Lived In Pearl Harbor

Ancient Hawaiians called Pearl Harbor, the bastion of the Pacific, "Puuloa." They believed it to be the home of the good queen of the sharks, Kaahupahau, who lived deep within a cavern on the Honolulu side of the harbor.

Kaahupahau's chief guard was a brother shark who made his home in a deep pit at the entrance to the lochs.

As for the queen of the sharks, she is said to have been the protector of the human race. She ordered her shark people to eat all man-eating intruders who came into Pearl Harbor but not to molest mankind.

When the United States navy's first drydock at Pearl Harbor neared completion, the foundation gave way in February of 1913. Old Hawaiians said the foundations were constructed over the cavern home of the shark queen's son who became angry and brought all his relatives to help the sharks pull down the drydock.

TPA Alohaliners fly the most scenic routes between the Islands.

Poinsettias Bloom Profusely Here

Does anyone know how the poinsettia got to Hawaii? That lovely flower of flame and substance will soon be blooming in the islands, reaching its peak at holiday time and continuing through early winter.

The poinsettia is native to Mexico and discovered there, according to our good friends in the Library of Hawaii, by Joel R. Poinsett of South Carolina, an American minister to Mexico in 1826. They gave his name to the flower, one of the most glamorous of all the flower names.

The holiday red petals of the poinsettia are not true petals, but are actually bracts, insignificant in most flowers. They have been developed by careful breeding over many years. The true flowers are small yellow clusters in the center of the showy halos of red.

The powerful (1,200 h.p.) Pratt & Whitney engines in each TPA DC-3 Alohaliner are checked before each flight, inspected thoroughly every 24 hours, overhauled completely every 1,200 hours of flight.

S
E
A
S
O
N
'
S



Rusty's Florist

P. H. HON. 4-0553
48 WILIKINA DRIVE
P. O. BOX 272
WAHIAWA, OAHU, T. H.

G
R
E
E
T
I
N
G
S

MAINLAND FLOOR SHOWS!



GOOD FOOD

An adventure
in good eating!

No Cover Charge

LATEST

DANCE

MUSIC



Pearl City Tavern

20 minutes
from Town



FINE BOOKS

about Hawaii and the Pacific

- BIRDS OF HAWAII. *George C. Munro.* \$2.00.
Illustrated descriptions of Island birds.
2. HAWAIIAN FLOWERS. *L. Kuck and R. C. Tongg.* \$3.50.
Hawaii's most beautiful flowers illustrated in color, described scientifically.
3. MELE AND THE FIRE WOMAN. *Helen Berkey.* \$1.50.
A favorite children's story of Hawaii.
4. LOOKING AT HONOLULU. *Edited by Lorraine Kuck.* \$1.50.
The colorful, exciting city in pictures.
5. TRADE WIND TALES. *Wade Warren Thayer.* \$1.50.
Collected short stories with Hawaiian settings.
6. THE HULA. *Martha Homsy and Doris Kerpeler.* \$1.25.
Illustrates hulas, their steps and interpretations.
7. FLOATING ISLAND. *Kathryn Jean MacFarland.* \$1.50.
Word pictures of Hawaii's beauty.
8. IN SOUTHERN SEAS. *Gurre Ploner Noble.* \$1.50.
Rhymes to remind one of South Sea isles.
9. PATTERNS IN TAPA. *Gurre Ploner Noble.* \$1.00.
Hawaii described by a gifted poet.
10. MAP OF HONOLULU. \$1.00. *All Honolulu and Oahu Streets carefully plotted.*
11. INTRODUCTION TO THE HAWAIIAN LANGUAGE. *Judd, Pukui, Stokes.* \$2.00. *English-Hawaiian and Hawaiian-English vocabularies.*

USE THIS ORDER FORM

Please mail to me, postpaid, the books indicated. (circle number as listed above)

1 2 3 4 5 6 7 8 9 10 11

I enclose my money order (or check) for \$_____.

Name _____

Address _____

City _____ State _____

TONGG PUBLISHING COMPANY, LTD.
P. O. Box 2113 • Honolulu, Hawaii

DO YOU KNOW

that when you fly TPA Aloha Airline you're flying on the world's most proven airplane? Every TPA Alohaliner is the famous DC-3 model built by Douglas Aircraft Company. More than 6,000 DC-3s are in operation throughout the world.

The DC-3 has flown more miles and carried more passengers than any other airplane ever manufactured. Indeed, Douglas-made airplanes altogether have flown a distance equal to more than two million times around the world! For example, just between the Islands, TPA's DC-3 Alohaliners fly an average million passenger miles every month.

And for the extra short flights we have between the Islands, the DC-3 is ideal. With no other airplane would it be possible to provide you with as wide a choice of frequent flights as we do with our present schedule, flying DC-3s. We hope you'll always depend on our DC-3 Alohaliners, and that you'll always fly



TPA
Aloha AIRLINE



OWNED BY 2,800 ISLAND FAMILIES



The
DOORWAY
to
Good Food



KEWALO INN Restaurant
FISHERMAN'S WHARF 1016 ALA MOANA

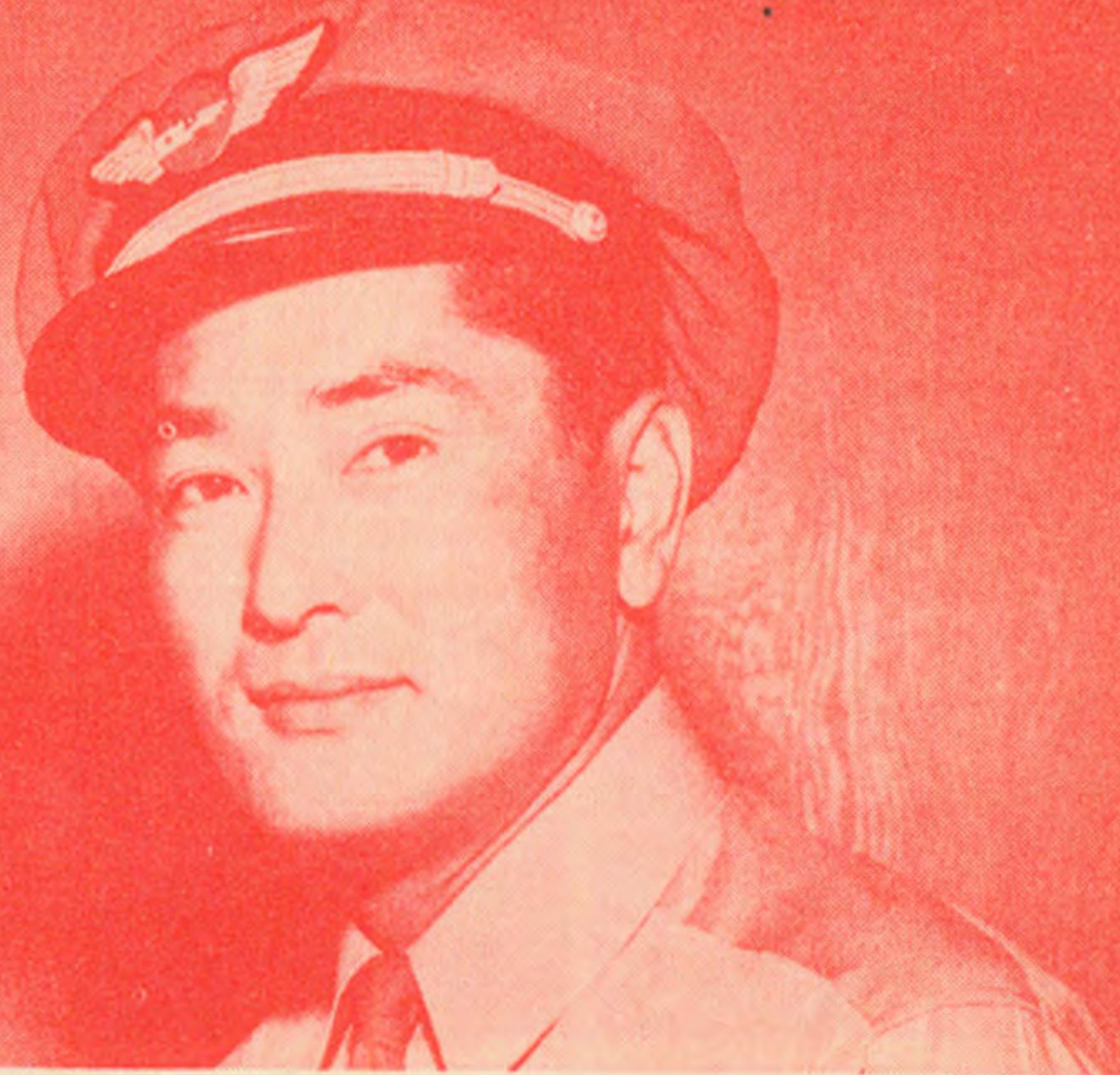
		COMPLETE EASTBOUND <i>Alohaliner</i>					SCHEDULES FROM HONOLULU						
READ DOWN	DAILY	DAILY	DAILY	DAILY	DAILY	Sunday Only	Daily Except Sunday	DAILY	DAILY	DAILY	READ DOWN		
	50	40	72	60	48	44A	44	62	52	46			
HONOLULU	Lv 7:25	Lv 8:00	Lv 8:15	Lv 9:55	Lv 12:00	Lv 12:40	Lv 1:10	Lv 2:30	Lv 4:00	Lv 4:10	HONOLULU		
MOLOKAI	Lv 8:05								Lv 4:40		MOLOKAI		
MAUI	Ar 8:35		Ar 9:05	Lv 10:55				Lv 3:30	Ar 5:10		MAUI		
UPOLU						Lv 1:55					UPOLU		
KONA						Ar 2:25	Ar 2:25				KONA		
HILO		Ar 9:35		Ar 11:50	Ar 1:35			Ar 4:25		Ar 5:45	HILO		

		COMPLETE WESTBOUND <i>Alohaliner</i>					SCHEDULES TO HONOLULU						
READ DOWN	DAILY	DAILY	DAILY	DAILY	DAILY	Sunday Only	Daily Except Sunday	DAILY	DAILY	DAILY	READ DOWN		
	73	41	51	49	61	45A	45	53	63	47			
HILO		Lv 9:50		Lv 12:10	Lv 1:50				Lv 4:45	Lv 6:00	HILO		
KONA						Lv 2:35	Lv 2:35				KONA		
MAUI	Lv 8:45		Lv 9:15		Lv 2:55			Lv 5:20	Lv 5:50		MAUI		
MOLOKAI			Lv 9:45					Lv 5:50			MOLOKAI		
HONOLULU	Ar 9:30	Ar 11:10	Ar 10:15	Ar 1:30	Ar 3:40	Ar 3:45	Ar 3:45	Ar 6:20	Ar 6:35	Ar 7:20	HONOLULU		

		COMPLETE <i>Alohaliner</i>					SCHEDULES BETWEEN HONOLULU AND KAUAI						
READ DOWN	DAILY	DAILY	DAILY	DAILY	DAILY	READ DOWN	DAILY	DAILY	DAILY	DAILY	DAILY		
	21	23	25	27	29		22	24	26	28	30		
HONOLULU	Lv 7:35	Lv 9:45	Lv 11:45	Lv 2:10	Lv 4:35	KAUAI	Lv 8:35	Lv 10:45	Lv 1:00	Lv 3:10	Lv 5:35		
KAUAI	Ar 8:20	Ar 10:30	Ar 12:30	Ar 2:55	Ar 5:20	HONOLULU	Ar 9:25	Ar 11:35	Ar 1:50	Ar 4:00	Ar 6:25		

Light Face Type (10:40) Indicates A.M.

Dark Face Type (10:40) Indicates P.M.



TPA CAPTAIN Roy Umaki, the first and only Nisei airline captain in the United States.

TPA Aloha Airline Has First Nisei Captain

TPA Alohaliner captain Roy H. Umaki, native of Olaa and Honolulu, is the first American of Japanese ancestry to qualify as captain on a U.S. scheduled airline, and at the present time, he is the only nisei airline captain in the United States.

Captain Umaki has logged more than 5,500 hours in the air, almost four times the federal requirement for captain qualification.

His licenses from the government include both single and multi-engine ratings, instrument rating, commercial pilot's license, a certificate as an aircraft instructor, and an air transport pilot's rating, highest in commercial aviation.

Captain Umaki was born at Olaa, Hawaii, and is a graduate of Hilo High School and New York University. He served as a first lieutenant in World War II. He began his flying career in 1937.

Mrs. Umaki is chief of reservations control for the Aloha Airline in Honolulu.



Hawaiian Language In Written Form

The printed word was unknown to the Hawaiians before the first group of New England missionaries arrived in the islands in 1820.

They found the Hawaiians had no written language and they promptly set to work first to learn the language, and then reduce it in written form. Hardly had the missionaries settled themselves than they began schools.

In 1822, a spelling and reading book and a 16-page pamphlet were off the press, followed by other works, usually scriptural in nature. The first Hawaiian newspaper was published on St. Valentine's Day, Feb. 14, 1834.

By May of 1839, the entire Bible had been printed in the Hawaiian language.

ROCCO'S

**ITALIAN PATIO
IN WAIKIKI**



Specializing in
**ITALIAN DINNERS
HOME-MADE RAVIOLI
PIZZA PIE, ANY STYLE**

McCully at Kalakaua • Phone 90-8155



Hawaiian Alphabet Has Only Twelve Letters

Malihinis are often thrown when they attempt to conquer the liquid vowels and consonants of the Hawaiian language, kept alive in Hawaii both in conversation and in geographical locations.

There are 12 letters in the Hawaiian alphabet, all the vowels—a, e, i, o, and u—and the following consonants; h, k, l, m, n, p, and w.

Every word and every syllable ends with a vowel and two consonants can never occur without a vowel between them. Some words have triple vowel formations and each vowel must be pronounced separately, as "Kaaawa."

This is one reason for the musical tones of the language. It is almost impossible to say some of the Hawaiian tongue-twisters without almost singing them.

Many words are formed only of vowels, for instance, "Aiea."

Catering



Banquets

Chez Michel Restaurant

Michel Martin Your Genial Host

136 Wilikina Drive, Wahiawa

Phone Wah. 3283

Valuable Information For Alohaliner Passengers

AIR EXPRESS—All ALOHALINER flights carry Air Express. Pickup and delivery service available. Air Express is fast. Call nearest ALOHA AIRLINE office for rates and other information.

AIRMAIL TPA ALOHALINERS carry Air Mail and Air Parcel Post between islands.

AIRPORT FACILITIES—The ALOHA AIRLINE is only airline flying between Islands which accommodates passengers through luxurious Overseas Terminal at Honolulu International Airport. Modern terminal facilities are also maintained on Neighbor Islands.



BAGGAGE—Each ALOHALINER passenger is allowed 40 pounds free baggage. Excess baggage accepted, space and weight permitting, at Air Express rates. Mainland bound or arriving passengers permitted 66 pounds.

CHILDREN—Children under 12 years of age are charged one-half the adult fare, except that one child under 2 years of age, not occupying a seat, may be carried free with each accompanying full-fare passenger. ALOHALINER stewardesses cheerfully help parents with children.



HERTZ DRIVE-UR-SELF SERVICE

New Sedans & Convertibles

Comprehensive Insurance

Special rates to Kamaainas and to Businessmen

LOCATIONS: Opposite Young Hotel
2060 Kalakaua Avenue - 2358 Kalakaua Avenue
Phone 95222

EQUIPMENT—All flights are operated with latest type Douglas DC-3 28-passenger ALOHALINERS. TPA ALOHALINERS are specially equipped with tropic-tailored ventilation, providing complete change of fresh air in cabin every 60 seconds. All aircraft maintained and inspected daily under strict Civil Aeronautics Administration rules.

FRAGILE & PERISHABLE ARTICLES—These are carried at risk of passenger. Passengers are warned not to pack acids, matches, lighter fluid, liquids and other hazardous articles in baggage.

GROUND TRANSPORTATION—Independently operated ground transportation is available at reasonable rates at all points served by the ALOHA AIRLINE. Ground transportation including U-drive cars may be arranged in advance when you make flight reservation. Hotel reservations similarly may be arranged for you by TPA at no extra cost.

PETS—Animals will be carried only when confined in suitable container, and only at express rates at owner's risk and subject to tariff regulations.

STOP-OVERS—Stop-overs allowed at any regular stop provided a reservation is made accordingly. There is no extra charge.

TERMINAL REPORTING TIME—In the interest of on-time service, passengers are requested to check in at airport 20 minutes before published departure time, and may be refused passage if arriving less than five minutes before departure time.

Sky Room

SHORT SNORTER BAR
DINING ROOM
COFFEE SHOP OPEN 24 HRS.

FAMOUS FOR
FLAMING SWORD DINNERS

Honolulu International Airport



FLIGHTS OF FANCY
DINNERS

EXOTIC FOODS

U-Drive Cars And Taxi Service



DRAKES U-DRIVE

Located in Hilo—U-Drive, taxi and bus service. Special trips around the Island. 5 and 7 passenger cars. For reservations write P.O. Box 1702. 74 Mamo Street. Phone 2221.

DUARTE'S U-DRIVE AND TOURS

On Kauai and Hawaii Duarte's offers only the finest. Late model cars—maps furnished. Phone 21311 in Lihue—36212 in Kalaheo—5698 in Hilo where Duarte's is located at 201 Banyan Drive.

GRAY LINE HAWAII

Competent Gray Line service is as close to you as the airport terminal! Metered cabs . . . limousine service . . . transportation to meet YOUR needs. In Honolulu, dial 9-5221.

HARA'S CAR RENTAL SERVICES

Your friendly U-Drive man in Hilo. Latest models to choose from. Free delivery. Reasonable rates. For information and reservations call 66801 in Honolulu; 2803 in Hilo. Conveniently located at 776 Kamehameha Avenue. (See ad in front of book)

HERTZ DRIVE-UR-SELF SERVICE

Outstanding service throughout the nation and Oahu. New Chevrolet sedans and convertibles—comprehensive insurance. Special rates to kamaainas and businessmen. 3 convenient Honolulu locations. Call 95222.

RUDDLE'S U-DRIVE

Excellent U-Drive service in Hilo. Airport pickup and delivery service. Rates: \$6 per day—12¢ per mile over 50 miles. Phone 2191 from 7 a.m. to 5 p.m. After hours phone 37383. Or call any TPA office.

WATASE TAXI SERVICE

On Kauai rent a clean car by day or week. Best insured, reasonable rates, radio equipped, free delivery. For reservations call any Aloha Airline office. In Hanapepe 47915; in Lihue 384 or 4511.

Island Buy-Ways



CHRISTMAS FRUIT PACKS

"Wouldn't they love papaya, if they could only get some on the mainland?" At last they can—carefully packed to arrive in perfect condition, thanks to Aloha Papaya Company's Gift-packs of fresh, select papaya and pineapples. Special discounts on quantity orders. Arrival in perfect condition guaranteed. (See ad.)

HAWAII CAMERA SALES CO.

For Leica, Graflex, Bell & Howell, Rolleiflex, Kodak, Canon, Exakta, Contax, Polaroid Land, Stereo Realist and other world famous camera equipment, see Hawaii Camera Sales Co. Easy monthly payments arranged. Phone 5-9860, 1109 Alakea St., Honolulu.

KODANI FLORISTS

Send a touch of old Hawaii to friends and relatives on the Mainland. Say "aloha" with orchid leis and tropical flowers. Airmail services available. For price lists write 307 Keawe Street, Hilo, Hawaii. Phone 5353.

RUSTY'S FLORIST

Here are just a few of our most popular floral arrangements and mainland mailing prices. Hawaiian Bouquet (assorted, carefully selected cut flowers) \$7.50. Maunaloa type Vanda orchid lei (250 blooms) \$6.50. Cattleya orchids (large size in lavender) \$4.50 to \$5.50. Delivery anywhere in Honolulu. Phone 4-0553.

SEE ALL THE ISLANDS

**HAWAII, MAUI, MOLOKAI,
OAHU, KAUAI**



Wine, Dine And Dance

CHAPMAN'S AT WAIKIKI

Specializing in the Island's best chicken and steak dinners and cocktails. All in air conditioned comfort. How better to spend that evening out? Open 10 a.m. till 1 a.m., Mon. thru Friday. Saturday's till 2 a.m. 2112 Kalakaua Ave. Phone 9-4277.

CHEZ MICHEL

A bit of France with Hawaiian flavor. Truly unexcelled cuisine served to the peak of perfection. "Michel" can suggest just the perfect taste treat for luncheon, dinner or snacking. 136 Wilikina Drive, Wahiawa. Phone Wah. 3283.

CITY GRILL

72 So. King St. in Downtown Honolulu has Island-wide reputation for tasty foods and courteous service. Choice steaks, chops, seafoods and fresh salads. 6 a.m. to 12 p.m. Mon. to Sat., 9 a.m. to 12 p.m. Sunday.

COCO PALM LODGE

Restful and relaxing, by the sea at Wailua, where motion picture Pagan Love Song was filmed. Swimming, boating, golfing. Good food. Bar service. Single, \$5 to \$10; double, \$8 to \$15; European.

HAWAII'S MOST EXOTIC CHRISTMAS GIFTS

For You to Send to the Mainland

ALOHA PAPAYA COMPANY'S GIFT-PACKS OF PAPAYA • PINEAPPLE

Guaranteed to arrive in perfect condition—firm, succulent, flavorful. Gift card and serving suggestions enclosed. Your choice, 3 gift packs:

6 Papayas \$3.60*; 3 Pineapples \$3.60*

4 Papayas, 1 Pineapple \$4.10*

*Add \$1.85 each box for freight, express, insurance

Phone or write your order now to:

ALOHA PAPAYA CO., LTD.

International Airport, Honolulu, Hawaii

Phones: 5-8510 and 8-2218

DOT'S (The Spot In Wahiawa)

Aside from excellent food, wonderful service, pleasant surroundings, Dot's also features dancing nightly. Momi Jones and her trio (Sammy, Twerp, Ray) are currently appearing. All of us at Dot's wish to take this means of wishing you all a Mele Kalikimaka.

FISHERMAN'S WHARF

Picturesquely situated on Honolulu's fishing fleet quay, 1009 Ala Moana Blvd. Specialties: all manner of Island fish, oysters on the half shell, abalone steaks, steamed clams, chioppino, etc. Cocktails, draft beer, superb wines. Real atmosphere.

GREEN GARDEN

A good place to eat in Hanapepe, Kauai. When on the west side stop at the Green Garden. Excellent meals, reasonable prices, hotel accommodations. Dancing space available. Wedding and banquets. Phone 4-6725.

JACK AND BILL'S JOYNT

Mele Kalikimaka A Me Hauoli Makahiki Hou to all of our friends. Bill Whaley and Jack Miller extend season's greetings from 2336 N. King Street, "Where Good Sports Meet."

KEWALO INN RESTAURANT

Mary Noonan and Joe Itagaki invite you to Kewalo Inn for real dining satisfaction. Such items as sizzling steaks, island chicken, fresh seafood and sukiyaki dinners head the menu of temptations. Complete bar service. Dinner-dance every Friday and Saturday. 1016 Ala Moana. Phone 53-8035 for reservations.

LEE'S DRIVE INN

Drop by for lunches, dinners, light snacks and the best in fountain service. Enjoy the informality of car hop service evenings. Party accommodations arranged. Lihue, Kauai. Phone 5355.

MOTEL MOKIHANA

Modern cottages in one of the most storied areas of Hawaii. On Koloa beach, close to Spouting Horn. Single, \$7 per day, \$45 per week; double \$10 per day, \$60 per week; 3 persons, \$14 per day, \$75 per week.

19th HOLE BAR

Francis "Chinny" Tom extends seasons greetings from Wahiawa. Mahalo and a prosperous '1953' to all from everyone at the 19th Hole.



COCKTAIL LOUNGE
AND RESTAURANT
DANCING NIGHTLY
THE SPOT
IN WAHIAWA

130 MANGO ST.

COCKTAILS OR YOUR FAVORITE DRINK
Served to a
"TEE"



19th HOLE BAR

FRANCIS "Chinny"
TOM
Your Host and Caddy
180 Kam Hwy.
Wahiawa

PEARL CITY TAVERN

Mainland Entertainment.
Excellent food. Dancing. No cover charge. 20
minutes from downtown Honolulu. Open every night.

PETE'S PLACE

"Pete" Shimomoto and all the folks at Pete's Place
wish their many friends, and visitors, a very Merry
Christmas and a prosperous New Year.

QUEEN'S SURF

Directly on the beach at Waikiki. Serving Prime
Eastern corn fed steer steaks; double thick French
lamb chops. Hawaiian entertainment featuring Jake
Keliikoa at the steel guitar and Moriah, vocalist.
Fri. thru Mon. Phone 9-6349 for reservations.

ROCCO'S ITALIAN FOOD

Featuring pizza, veal scallopini, chicken a la caccia-
tore, spaghetti, ravioli. Minestrone soup. Open 12
noon till 3 a.m. Dinners delivered anywhere in
Honolulu. 1900 Kalakaua in Waikiki. Phone 90-8155.

SEA VIEW INN

Located at picturesque Haleiwa Beach, is just the
spot to stop for luncheon or dinner when making
that trip around the Island. Sea food our specialty.
Cocktails. Phone 2-B-703.

Holidays are busy days. Make your Christmas air
travel reservations via TPA Aloha Airline early!

SKY ROOM

Located at Honolulu International Airport, "The
Crossroads of the Pacific." Exotic foods, cosmopo-
litan atmosphere, all blended to create a dining room
that seasoned travelers, and arm chair explorers,
come to again and again. Open 5 p.m. till 11 p.m.

THE HILO HOTEL

Businessmen and tourists both enjoy the informal
hospitality and convenience of this friendly hotel on
the Big Island. Reasonable rates and fine service
have made it a longtime favorite.

THE VOLCANO HOUSE

You haven't seen Hawaii until you arrive at The
Volcano House in the heart of Hawaii National Park.
It's one of the world's best known, most unique
resorts.

TOP HAT

Golfers, attention! Miss that last putt? "Top Hat"
offers a solution to all your difficulties . . . "Top"
drinks! "Top" relaxing! "Top" atmosphere! At the
"Top Hat!" 69 Kam Highway, Wahiawa. Phone
Wah. 8131.

WAIKIKI LAU YEE CHAI

Lavish Chinese atmosphere in heart of Waikiki,
located at Kalakaua and Kuhio Avenues. Superb
Cantonese cuisine. Cocktails in the Gung Ho Bar.
Telephone 998753-99-2489.



SEA VIEW INN

Sea Food
Our
Specialty
•
Cocktails

Haleiwa Beach

•
Phone 2-B-703

RUDDLE'S U-DRIVE Island of Hawaii

FORD AND MERCURY CARS

For Your Convenience—Airport Pick-up
and Delivery Service

Rates: \$6.00 per day—12¢ per mile over 50 miles.
Weekly and monthly rates upon request.

Phone 2191 7 a.m. to 5 p.m.—After hours phone 37383
Hilo, Hawaii

Associate U-Drive operators on All Islands
All reservations can be confirmed by any TPA office.

WAIKIKI TAVERN

Authentic Hawaiian entertainment every night. Exciting sword dances. Dance of fire. Exotic hulas. Excellent food. Tropical drinks. Try our famed salad bar and merry-go-round bar. On the beach at Waikiki.

WO FAT

A visit to this colorful restaurant is a must on your Island itinerary. We take pride in our chef who is tops in Chinese cuisine. Economy luncheons and dinners for groups of any size. We specialize in 9 course dinners for parties of all occasions. Phone 5-7260. Hotel and Maunakea Sts.

Fragrant Sandal-Wood Once Plentiful Here

The wonderful, fragrant sandalwood tree was practically lost to the Hawaiian islands not long after the white man stepped on these shores.

The sandalwood tree once grew in profusion, in tall, stately groves along the mountainside slopes. Its commercial value was soon discovered in the early part of the 19th century, and the wholesale exportation of sandal-wood is a sad chapter in Hawaii's history.

Skippers loaded their ships with sandal-wood and found it a lucrative medium of exchange, particularly in China. As a result, the islands were practically decimated of this beautiful, scented tree.

Waikiki
LAU YEE CHAI
Kalakaua & Kuhio • Phones 998763 - 992487



**Cantonese Cuisine Superb • Cocktails in the
Gung Ho Bar**

DECEMBER CROSSWORD PUZZLE

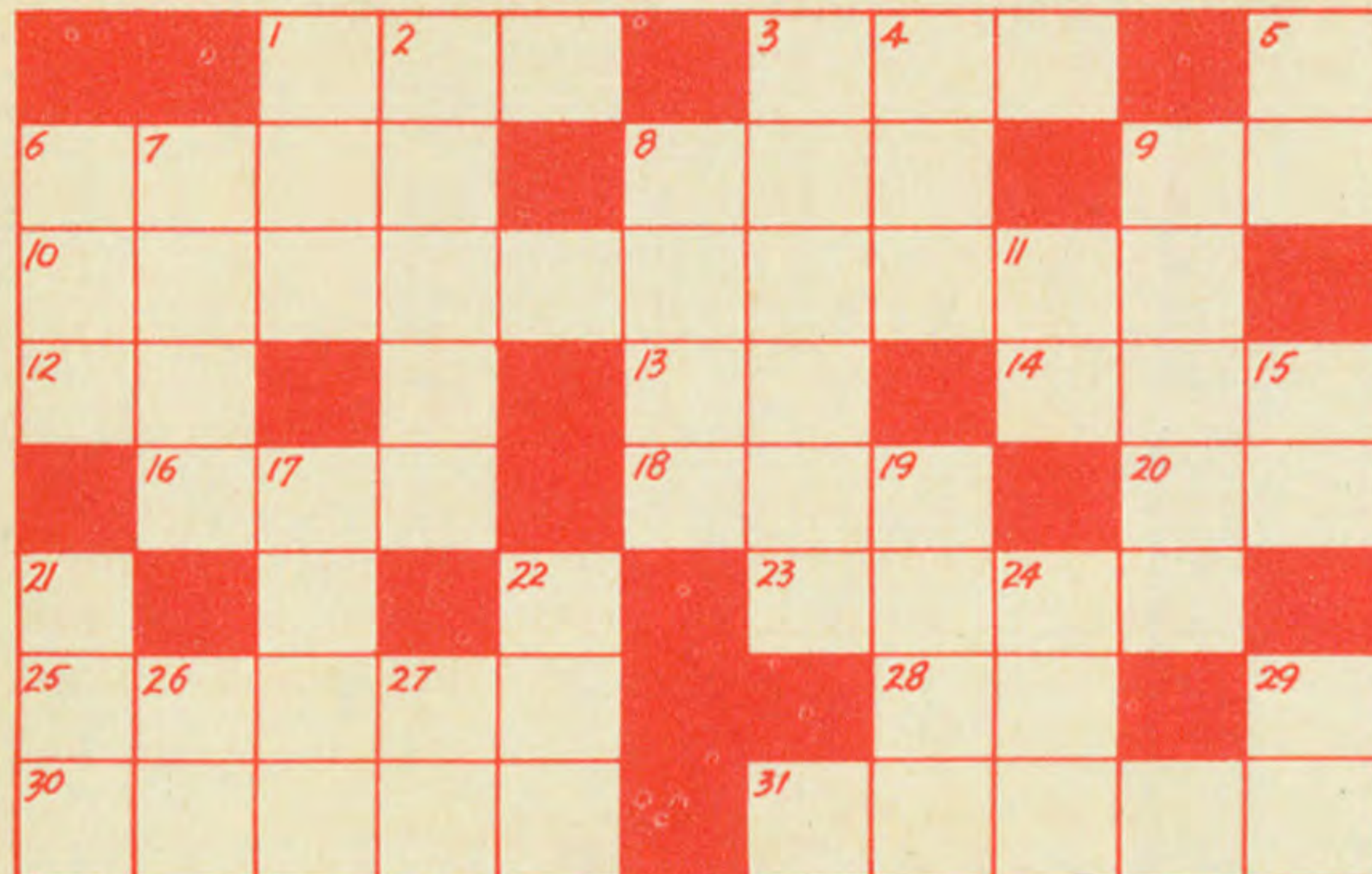
ACROSS

1. Streets (abbr.)
3. Gave food
6. Precipitation of cold climates
8. Floor covering
9. Company (abbr.)
10. Mele
12. Neuter pronoun
13. Hula skirts are made of leaves
14. Explosive
16. Least number
18. A menehune is an
20. Haw'n word meaning ripe
23. Christmastide
25. Haw'n term for a porch
28. Haw'n for "here"
30. Haw'n for angel
31. TPA Airline

- other airplanes combined
3. Save, with TPA's ½ fare plan
4. Estimated Time of Arrival
5. Proceed
6. Sometimes there's enough snow to on Mauna Loa
7. North Atlantic Treaty Organization
8. Small plant flea
9. Santa lands at Waikiki via outrigger
11. Carat (abbr.)
15. Preposition
17. Haw'n for "goose"
19. Gas is used for in planes
21. Haw'n meaning "life", or "health"
24. Haw'n meaning "horse"
26. Denoting single article
27. Man's name (abbr.)
29. Bachelor of Arts

DOWN

1. The Sun
2. as many people fly Douglas as all



The Solution To This Puzzle May Be Obtained From Any Aloha Airline Reservations or Ticket Office