

BETWEEN THE ISLANDS

*Fly*

TPA

*Alloha* AIRLINE

HAWAII

ONE OF THE SCHEDULED AIRLINES OF THE UNITED STATES



APRIL, 1953

# FULL FARES

	Honolulu	Kauai	Molokai	Maui	Upolu	Kona	Hilo
HONOLULU		\$ 8.50	\$ 6.50	\$ 8.50	\$10.50	\$11.50	\$13.50
KAUAI	\$ 8.50		11.50	13.50	15.50	16.50	18.50
MOLOKAI	6.50	11.50		6.00			11.50
MAUI	8.50	13.50	6.00				10.00
UPOLU	10.50	15.50				5.50	
KONA	11.50	16.50					
HILO	13.50	18.50	11.50	10.00			

A ROUNDTRIP FARE IS TWICE THE ONE-WAY FARE

ADD 15% U.S. TAX TO ALL RATES

## CALENDAR FOR 1/2 FARE FAMILY TRAVEL

APRIL						
Sun	Mon	Tue	Wed	Thu	Fri	Sat
			1	2	3	4
5	6	7	8	9	10	11
12	13	14	15	16	17	18
19	20	21	22	23	24	25
26	27	28	29	30		

MAY						
Sun	Mon	Tue	Wed	Thu	Fri	Sat
					1	2
3	4	5	6	7	8	9
10	11	12	13	14	15	16
17	18	19	20	21	22	23
24	31	25	26	27	28	29
						30

JUNE						
Sun	Mon	Tue	Wed	Thu	Fri	Sat
	1	2	3	4	5	6
7	8	9	10	11	12	13
14	15	16	17	18	19	20
21	22	23	24	25	26	27
28	29	30				

JULY						
Sun	Mon	Tue	Wed	Thu	Fri	Sat
			1	2	3	4
5	6	7	8	9	10	11
12	13	14	15	16	17	18
19	20	21	22	23	24	25
26	27	28	29	30	31	

Note days that are shaded. On these days, a full fare ticket for one parent entitles the other parent and all children under 22 years to travel on 1/2 fare tickets. This is the popular 1/2 fare family plan, featured by the Aloha Airline.

TPA  
  
 HAWAII

BETWEEN THE ISLANDS

Fly  
 TPA *Aloha* AIRLINE  
 HAWAII

ONE OF THE SCHEDULED AIRLINES OF THE UNITED STATES



APRIL, 1953

# KONA

the place for Fishing or Beachcombing!

\$8

FIRST CLASS ROOMS!  
BUDGET PRICES!

\$5

AT KAILUA-KONA

double HOTEL AND COTTAGES single

ENJOY HAWAII ON A FAMOUS  
"TRADE WIND TOUR"

International Travel Service

Outrigger Arcade bet. Royal & Moana Hotels  
Phone 9-1196

Edgewater Hotel Office—92-3215

## Offices On All Islands

POINT	OFFICE	TELEPHONE	AIRPORT	TELEPHONE
HONOLULU	King and Bethel	63591	Overseas Terminal	83911
KAUAI	Lihue Opp. County Bldg	383-384	Lihue	4511
MOLOKAI	Hoolehua	2-W-74	Hoolehua	2-W-74
MAUI	Wailuku 2068 Main	939	Kahului	72141
UPOLU PT.	Kohala	533	Upolu	533
KONA	Kainaliu	3-2762	Kailua	2371
HILO	Hilo 116 Kamehameha	3393	Hilo	5331

## TPA Flight Facts

### SMOKING PERMITTED

TPA Aloha Airline, as one of the scheduled airlines of the United States, allows smoking on all Alohaliner flights.

Smoking is permitted on all scheduled airlines on the Mainland and elsewhere throughout the world.

On TPA's modern DC-3 Alohaliners there's no reason why passengers should not be permitted to smoke.

Exclusive "tropic-tailored" ventilation in each TPA Alohaliner provides a complete change of sky-fresh air in the cabin every 60 seconds. Moreover, even the fabrics in each Alohaliner cabin is fire resistant, meeting government requirements.

Smoking is prohibited only during take-off and while landing.

### OPEN SHUTTER

Shutter bugs fly with their cameras and often get beautiful photographs through Alohaliner windows. Recommended: hold the camera at right angle to the window or shield the pane to avoid reflection; use haze filter against cloud glare; speeds of 1/100th to 1/200th in bright sunshine will stop motion when you shoot at the ground.

# ROCCO'S

ITALIAN PATIO  
IN WAIKIKI



Specializing in

ITALIAN DINNERS  
HOME-MADE RAVIOLI  
PIZZA PIE, ANY STYLE

McCully at Kalakaua • Phone 90-8155

## "DC" Airplanes Span All Continents



Each TPA Alohaliner is a Douglas DC-3, famous for dependability. Douglas Aircraft Company which builds DC-3s, DC-4s, DC-6s and DC-6B's claims that every day, Douglas "DC" airplanes fly about 3,126,500 miles for 160 airlines.

That is more than five times around the world every hour. "DC" airplanes link all the continents, and span the seven seas.

And TPA Aloha Airline's dependable DC-3 Alohaliners link the Hawaiian Islands with scenic routes unsurpassed anywhere. Alohaliners have big windows, designed for "flight-seeing."

TPA Alohaliner pilots say that for flying short distances, like we have here in the Islands, there is no better plane than the DC-3, because is easy to handle, is fast to load and un-load, and is in the air seconds after loading.

Many pilots learned to rely on DC-3s during the war when that airplane won battle honors in every combat theater during the war. "Dependability" seems to be the most-used adjective for the DC-3. DC-3 history speaks for itself. It has flown the tests of time, and has outlived many contemporaries, now obsolete.



### BOAT DAY IN HAWAII

The little island of Kahoolawe lies six miles off the southwestern end of Maui. Kahoolawe is eighth in size of the main Hawaiian group and is part of Maui county. It is about 11 miles long and six miles wide. Dominating the island is Mount Moaula, a brown dome 1,444 feet high. During the war, this little island was "captured" by U. S. marines training for assaults to come.



for  
**REAL HAWAIIAN ENTERTAINMENT**

- SEE ● Authentic Hulas  
● Spectacular Fire Dance  
● Exciting Sword Dance

Excellent Food ● Tropical Drink

- No Cover Charge  
3 shows nightly  
9 p.m. till after midnight

*Waikiki Tavern*

2437 Kalakaua Ave.

## **RUDDLE'S U-DRIVE** *Island of Hawaii*

- Clean, attractive 1952 cars
- For your convenience—Airport pick-up and delivery service
- Standard or automatic transmission—All cars in A-1 condition

### RATES

\$7.50 per day, Gas and Oil incl.—15¢ per mile over 50 miles

Weekly and Monthly Rates Upon Request

Phone 2191-7 a.m. to 5 p.m.—After Hours Phone 49525

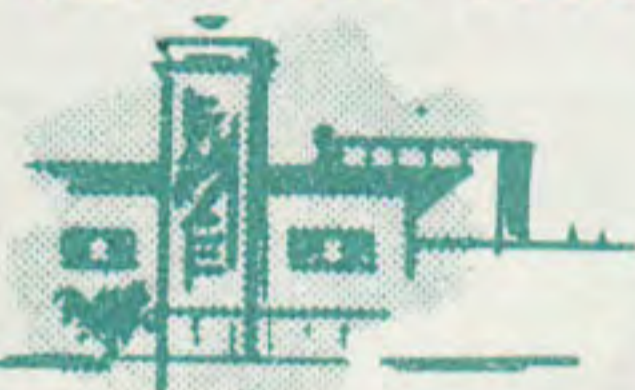
Airport Service—Kona, Hilo, Waimea and Upolu

## Valuable Information For Alohaliner Passengers

**AIR EXPRESS** —All ALOHALINER flights carry Air Express. Pickup and delivery service available. Air Express is fast. Call nearest ALOHA AIRLINE office for rates and other information.

**AIRMAIL** —TPA ALOHALINERS carry Air Mail and Air Parcel Post between islands.

**AIRPORT FACILITIES** —The ALOHA AIRLINE is only airline flying between Islands which accommodates passengers through luxurious Overseas Terminal at Honolulu International Airport. Modern terminal facilities are also



maintained on Neighbor Islands.

**BAGGAGE** —Each ALOHALINER passenger is allowed 40 pounds free baggage. Excess baggage accepted, space and weight permitting, at Air Express rates. Mainland bound or arriving passengers permitted 66 pounds.

**CHILDREN** —Children under 12 years of age are charged one-half the adult fare, except that one child under 2 years of age, not occupying a seat, may be carried free with each accompanying full-fare passenger. ALOHALINER stewardesses cheerfully help parents with children.

**EQUIPMENT** —All flights are operated with latest type Douglas DC-3 28-passenger ALOHALINERS. TPA ALOHALINERS are specially equipped with tropic-tailored ventilation, providing complete change of fresh air in cabin every 60 seconds. All aircraft maintained and inspected daily under strict Civil Aeronautics Administration rules.

### FRAGILE & PERISHABLE ARTICLES

These are carried at risk of passenger. Passengers are warned not to pack acids, matches, lighter fluid, liquids and other hazardous articles in baggage.

**GROUND TRANSPORTATION** —Independently operated ground transportation is available at reasonable rates at all points served by the ALOHA AIRLINE. Ground transportation including U-drive cars may be arranged in advance when you make flight reservation. Hotel reservation similarly may be arranged for you by TPA at no extra cost.

**PETS** —Animals will be carried only when confined in suitable container, and only at express rates at owner's risk and subject to tariff regulations.

**STOP-OVERS** —Stop-overs allowed at any regular stop provided a reservation is made accordingly. There is no extra cost.

**TERMINAL REPORTING TIME** —In the interest of on-time service, passengers are requested to check in at airport 20 minutes before published departure time, and may be refused passage if arriving less than five minutes before departure time.

The Show Place of  
The Islands

on the  
Beach at Waikiki

*Queen's Surf*

Dancing nightly to the music  
of Fred Norton and the  
Queen's Men

Dinner, Dancing Every  
Saturday Nite



NO COVER

NO MINIMUM

*See All Of Hawaii*

Travel with native  
Hawaiians who know  
the Islands best.

**HAWAIIAN TOUR  
& TRAVEL SERVICE**

on the beach at Waikiki

2234 Kalakaua Ave. Phones 902115-915135-906195



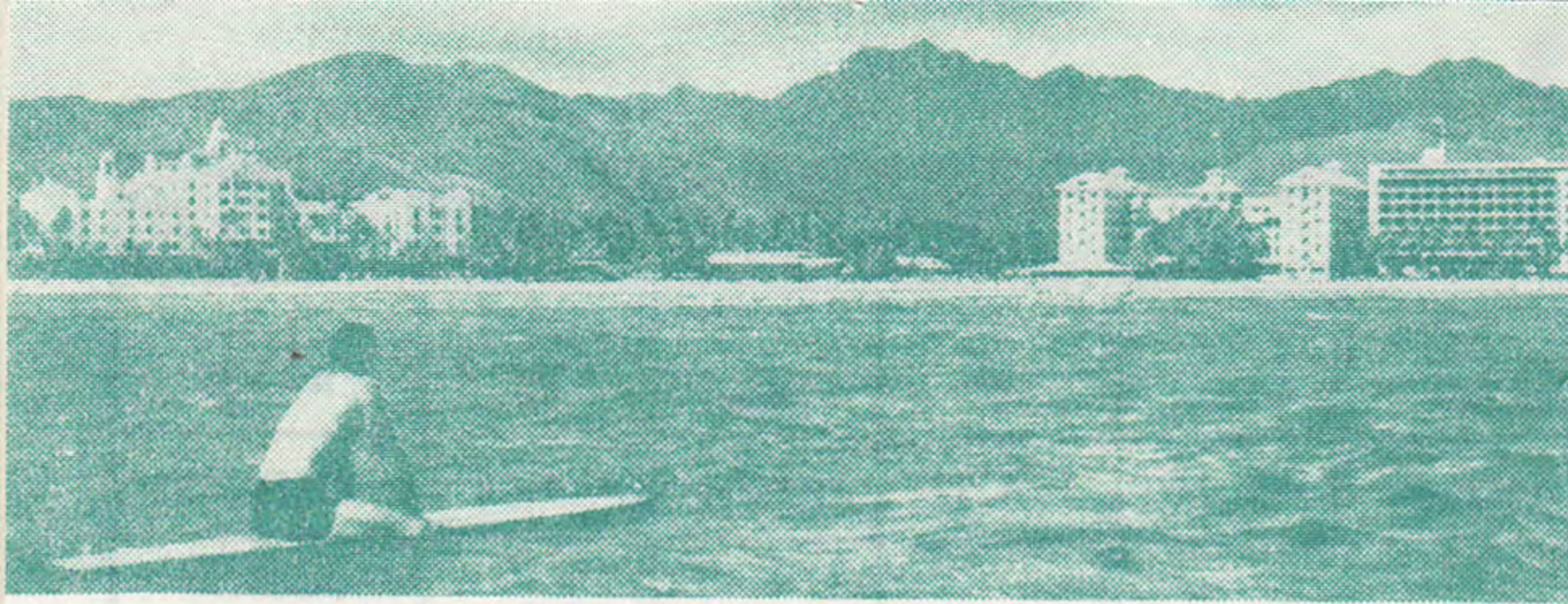
<b>COMPLETE EASTBOUND <i>Alohaliner</i> SCHEDULES FROM HONOLULU</b>											
READ DOWN	DAILY	DAILY	DAILY	DAILY	DAILY	Sunday Only	Daily Except Sunday	DAILY	DAILY	DAILY	READ DOWN
	50	40	72	60	48	44A	44	62	52	46	
HONOLULU	Lv 7:25	Lv 8:00	Lv 8:15	Lv 9:55	Lv 12:00	Lv 12:40	Lv 1:10	Lv 2:30	Lv 4:00	Lv 4:10	HONOLULU
MOLOKAI	Lv 8:05								Lv 4:40		MOLOKAI
MAUI	Ar 8:35		Ar 9:05	Lv 10:55				Lv 3:30	Ar 5:10		MAUI
UPOLU						Lv 1:55					UPOLU
KONA						Ar 2:25	Ar 2:25				KONA
HILO		Ar 9:35		Ar 11:50	Ar 1:35			Ar 4:25		Ar 5:45	HILO

<b>COMPLETE WESTBOUND <i>Alohaliner</i> SCHEDULES TO HONOLULU</b>											
READ DOWN	DAILY	DAILY	DAILY	DAILY	DAILY	Sunday Only	Daily Except Sunday	DAILY	DAILY	DAILY	READ DOWN
	73	41	51	49	61	45A	45	53	63	47	
HILO		Lv 9:50		Lv 12:10	Lv 1:50				Lv 4:45	Lv 6:00	HILO
KONA						Lv 2:35	Lv 2:35				KONA
MAUI	Lv 8:45		Lv 9:15		Lv 2:55			Lv 5:20	Lv 5:50		MAUI
MOLOKAI			Lv 9:45					Lv 5:50			MOLOKAI
HONOLULU	Ar 9:30	Ar 11:10	Ar 10:15	Ar 1:30	Ar 3:40	Ar 3:45	Ar 3:45	Ar 6:20	Ar 6:35	Ar 7:20	HONOLULU

<b>COMPLETE <i>Alohaliner</i> SCHEDULES BETWEEN HONOLULU AND KAUAI</b>									
READ DOWN	DAILY	DAILY	DAILY	DAILY	READ DOWN	DAILY	DAILY	DAILY	DAILY
	21	23	27	29		22	24	28	30
HONOLULU	Lv 7:35	Lv 10:15	Lv 2:10	Lv 4:35	KAUAI	Lv 8:35	Lv 11:15	Lv 3:10	Lv 5:35
KAUAI	Ar 8:20	Ar 11:00	Ar 2:55	Ar 5:20	HONOLULU	Ar 9:25	Ar 12:05	Ar 4:00	Ar 6:25

Light Face Type (10:40) Indicates A.M.

Dark Face Type (10:40) Indicates P.M.



WAIKIKI FROM A SURFBOARD

## Hawaii's Exotic Personality Prompts Return Visits

One reason vacationers come to Hawaii is to escape from cold and snow. Another is a visit to Polynesia and the orient.

It's not just the tropic warmth and greenness that brings Hawaii's come-backers to these five mid-Pacific resort islands winter after winter.

Hawaii's melting-pot personality has a lot to do with it.

Hawaiians, Samoans, Tahitians, Filipinos, Chinese, Japanese and Koreans give food, art, entertainment and souvenirs an excitement that means extra enjoyment to the flight from winter, the Hawaii Visitors Bureau says.



### HERTZ DRIVE-UR-SELF SERVICE

New Sedans & Convertibles

Comprehensive Insurance

Special rates to Kamaainas and to Businessmen

LOCATIONS: Opposite Young Hotel  
2060 Kalakaua Avenue - 2358 Kalakaua Avenue  
Phone 95222

## U-Drive Cars And Taxi Service



### ACHOR'S GRAY LINE—KAUAI

Late model U-DRIVE CARS & Sedans with DRIVER-GUIDE available at the LIHUE AIRPORT—Credit cards honored. We also operate daily GRAY-LINE Sightseeing Tours. For rates or reservations contact your TRAVEL AGENT, or ACHOR'S GRAY LINE desk in Lobby, Lihue Airport Bldg.

### DRAKE'S U-DRIVE, TAXI AND BUS SERVICE

5-Passenger cars, \$7.50 per day first 70 miles. 12¢ thereafter; 7-passenger cars, \$15.000 first 70 miles, 15¢ thereafter. For reservations write P. O. Box 1702, 74 Mamo St., Phone 2221, Hilo. Special trips around the island.

### HERTZ DRIVE-UR-SELF SERVICE

Outstanding service throughout the nation and Oahu. New Chevrolet sedans and convertibles—comprehensive insurance. Special rates to kamaainas and businessmen. 3 convenient Honolulu locations. Call 95222.

### RUDDLE'S U-DRIVE—HAWAII

Excellent U-Drive service in Hilo. Airport pickup and delivery service. Rates: \$7.50 per day—15¢ per mile over 50 miles. Phone 2191 from 7 a.m. to 5 p.m. After hours phone 49525. Or call any TPA office.

### WAILUA RIVER EXCURSION

On Kauai, take the Wailua River trip to see the Fern Grotto. Hear Hawaiian Legends. Hekka party on board or at picnic grounds. For reservations or information, call 5W173 or write P. O. Box 213 Kapaa, Kauai, or inquire at any TPA ticket office. Reliable licensed boat operators.

### WATASE U-DRIVE AND TAXI

On Kauai rent a clean car by day or week. Best insured, reasonable rates, radio equipped, free delivery. For reservations call any Aloha Airline office. In Hanapepe 47915; in Lihue 384 or 4511. Meet all planes.



**HAWAIIAN LEI-MAKER**

## Island Buy-Ways

### HAWAII CAMERA SALES CO.

For Leica, Graflex, Bell & Howell, Rolleiflex, Kodak, Canon, Exakta, Contax, Polaroid Land, Stereo Realist and other world famous camera equipment, see Hawaii Camera Sales Co. Easy monthly payments arranged. Phone 5-9860, 1109 Alakea St., Honolulu.

### KODANI FLORISTS

Say "Aloha" with orchid leis, anthuriums and tropical flowers. Airmail services available to the mainland and neighbor islands. While in Hilo drop in at 307 Keawe St. or phone 5353. Write for price lists.

### HAWAIIAN FERN-WOOD, LTD.

Visit the only treefern factory in the world! See giant Hawaiian treeferns processed into popular Fernwood plant containers and supports. Select Fernwood gifts for your "green thumb" friends. Also Hawaiian monkey pod table sets for the home craftsman. Write for brochures and price lists to: P. O. Box 1321, Hilo, Hawaii.



## Wine, Dine And Dance



### CITY GRILL

72 So. King St. in Downtown Honolulu has Island-wide reputation for tasty foods and courteous service. Choice steaks, chops, seafoods and fresh salads. 6 a.m. to 12 p.m. Mon. to Sat., 9 a.m. to 12 p.m. Sunday.

### FISHERMAN'S WHARF

Picturesquely situated on Honolulu's fishing fleet quay, 1009 Ala Moana Blvd. Specialties: all manner of Island fish, oysters on the half shell, abalone steaks, steamed clams, chioppino, etc. Cocktails, draft beer, superb wines. Real atmosphere.

### QUEEN'S SURF

Directly on the beach at Waikiki. Serving Prime Eastern corn fed steer steaks; double thick French lamb chops. Hawaiian entertainment featuring Jake Keliikoa at the steel guitar and Moriah, vocalist. Fri. thru Mon. Phone 9-6349 for reservations.

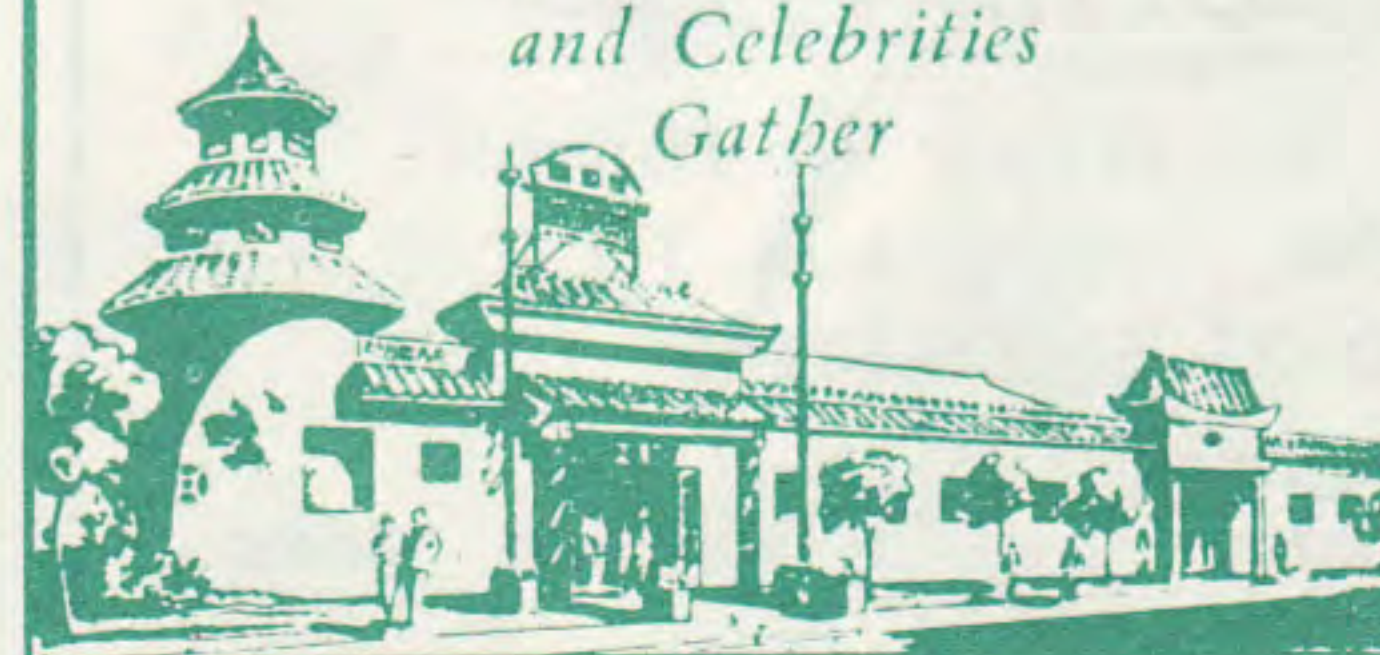
### ROCCO'S ITALIAN FOOD

Featuring pizza, veal scallopini, chicken a la cacciatore, spaghetti, ravioli. Minestrone soup. Open 12 noon till 3 a.m. Dinners delivered anywhere in Honolulu. 1900 Kalakaua in Waikiki. Phone 90-8155.

## Waikiki LAU YEE CHAI

Kalakaua & Kuhio  
Phones 998753-992487

*Where the Stars  
and Celebrities  
Gather*



- Superb Cantonese Cuisine
- Finest Entertainment Nightly
- Cocktails in the Gung Ho Bar
- Floor Show Thurs., Fri. & Sat.



## SKY ROOM

Located at Honolulu International Airport, "The Crossroads of the Pacific." Exotic foods, cosmopolitan atmosphere, all blended to create a dining room that seasoned travelers, and arm chair explorers, come to again and again. Open 5 p.m. till 11 p.m.

## WAIKIKI LAU YEE CHAI

Lavish Chinese atmosphere in heart of Waikiki, located at Kalakaua and Kuhio Avenues. Superb Cantonese cuisine. Cocktails in the Gung Ho Bar. Telephone 998753-99-2489.

## WAIKIKI TAVERN

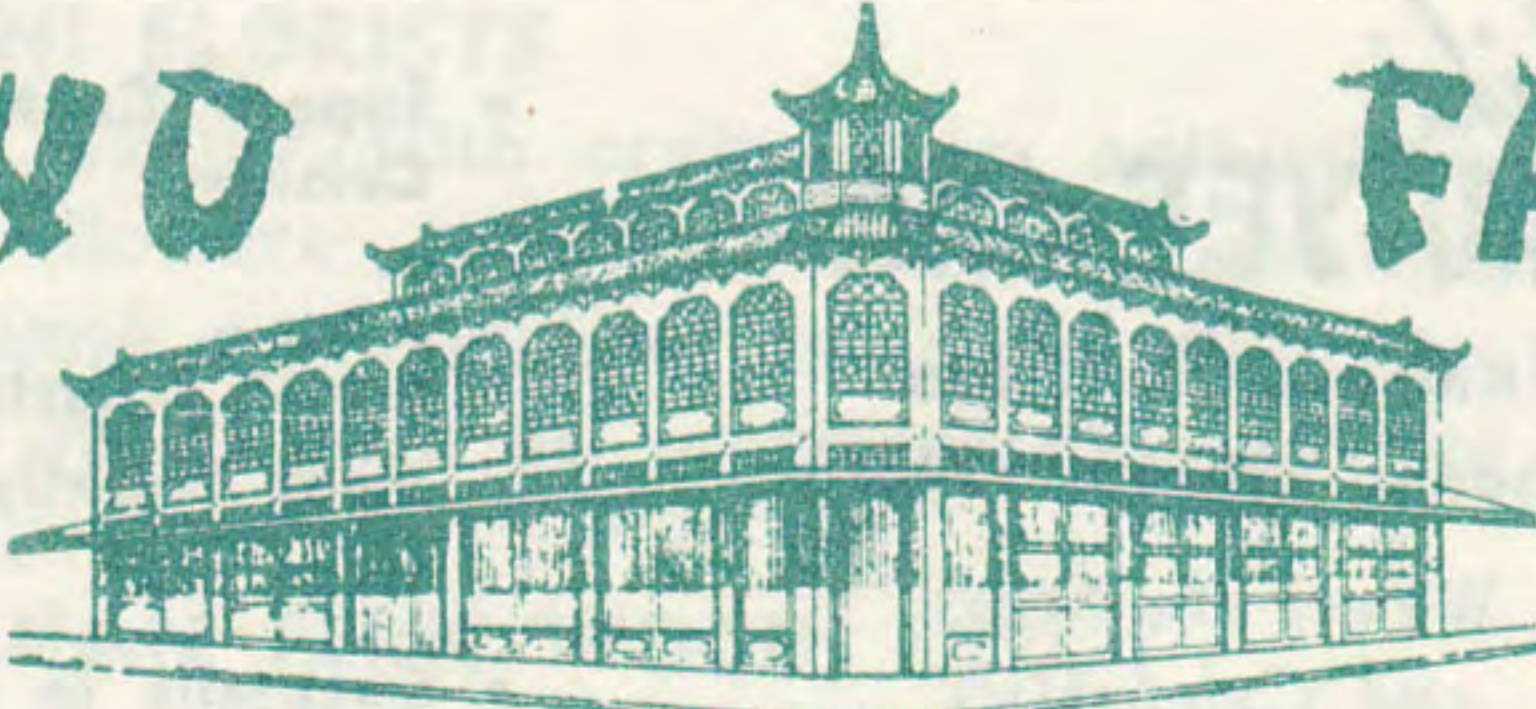
Authentic Hawaiian entertainment every night. Exciting sword dances. Dance of fire. Exotic hulas. Excellent food. Tropical drinks. Try our famed salad bar and merry-go-round bar. On the beach at Waikiki.

## WO FAT

A visit to this colorful restaurant is a must on your Island itinerary. We take pride in our chef who is tops in Chinese cuisine. Economy luncheons and dinners for groups of any size. We specialize in 9 course dinners for parties of all occasions. Phone 5-7260. Hotel and Maunakea Sts.

TPA Aloha Airline gives you baggage checks for the protection of your baggage.

# WO FAT



*"Oldest Chop Sui House In Hawaii"*

OPEN 7 DAYS A WEEK - 10:30 A.M. TO 9:00 P.M.  
TELEPHONES 57260-57166

Cor. Hotel & Maunakea Sts.  
In the Heart of Chinatown

Honolulu, Hawaii

