

BETWEEN THE ISLANDS

Fly

TPA

Aloha AIRLINE
HAWAII

ONE OF THE SCHEDULED AIRLINES OF THE UNITED STATES

FEBRUARY, 1953



FULL FARES

	Honolulu	Kauai	Molokai	Maui	Upolu	Kona	Hilo
HONOLULU		\$ 8.50	\$ 6.50	\$ 8.50	\$10.50	\$11.50	\$13.50
KAUAI	\$ 8.50		11.50	13.50	15.50	16.50	18.50
MOLOKAI	6.50	11.50		6.00			11.50
MAUI	8.50	13.50	6.00				10.00
UPOLU	10.50	15.50				5.50	
KONA	11.50	16.50					
HILO	13.50	18.50	11.50	10.00			

A ROUNDTRIP FARE IS TWICE THE ONE-WAY FARE

ADD 15% U.S. TAX TO ALL RATES

CALENDAR FOR 1/2 FARE FAMILY TRAVEL

FEBRUARY

Sun	Mon	Tue	Wed	Thu	Fri	Sat
1	2	3	4	5	6	7
8	9	10	11	12	13	14
15	16	17	18	19	20	21
22	23	24	25	26	27	28

MARCH

Sun	Mon	Tue	Wed	Thu	Fri	Sat
1	2	3	4	5	6	7
8	9	10	11	12	13	14
15	16	17	18	19	20	21
22	23	24	25	26	27	28
29	30	31				

APRIL

Sun	Mon	Tue	Wed	Thu	Fri	Sat
			1	2	3	4
5	6	7	8	9	10	11
12	13	14	15	16	17	18
19	20	21	22	23	24	25
26	27	28	29	30		

MAY

Sun	Mon	Tue	Wed	Thu	Fri	Sat
					1	2
3	4	5	6	7	8	9
10	11	12	13	14	15	16
17	18	19	20	21	22	23
24	31	25	26	27	28	29
					30	

Note days that are shaded. On these days, a full fare ticket for one parent entitles the other parent and all children under 22 years to travel on 1/2 fare tickets. This is the popular 1/2 fare family plan, featured by the Aloha Airline.

TPA

Aloha AIRLINE
HAWAII

BETWEEN THE ISLANDS

Fly

TPA

Aloha AIRLINE
HAWAII

ONE OF THE SCHEDULED AIRLINES OF THE UNITED STATES

FEBRUARY, 1953



KONA

the place for Fishing or Beachcombing!

\$8

FIRST CLASS ROOMS!
BUDGET PRICES!

\$5

AT KAILUA-KONA

double HOTEL AND COTTAGES single

ENJOY HAWAII ON A FAMOUS
"TRADE WIND TOUR"

International Travel Service

Outrigger Arcade bet. Royal & Moana Hotels

Phone 9-1196

Edgewater Hotel Office—92-3215

With Kamaainas and Visitors Alike
Hawaii's most appealing and unique
Vacation Spot

The Volcano House

In the Heart of Hawaii National Park



And for your Crescent City Stop-over

The Hilo Hotel

Modern Comfortable Reasonable

Long a favorite with commercial travelers



For reservations write direct

Or consult any Travel Agent



NATIONAL SAFETY COUNCIL

1951

AVIATION
SAFETY AWARD

TO

TRANS-PACIFIC AIRLINES, LTD.

in recognition of its contribution to Safe Air Transportation
having operated 2 years and,
as of December 31, 1951

30,617,000 PASSENGER MILES

without a passenger or crew fatality in
scheduled passenger carrying flight operations

Ned H. Dearborn
President

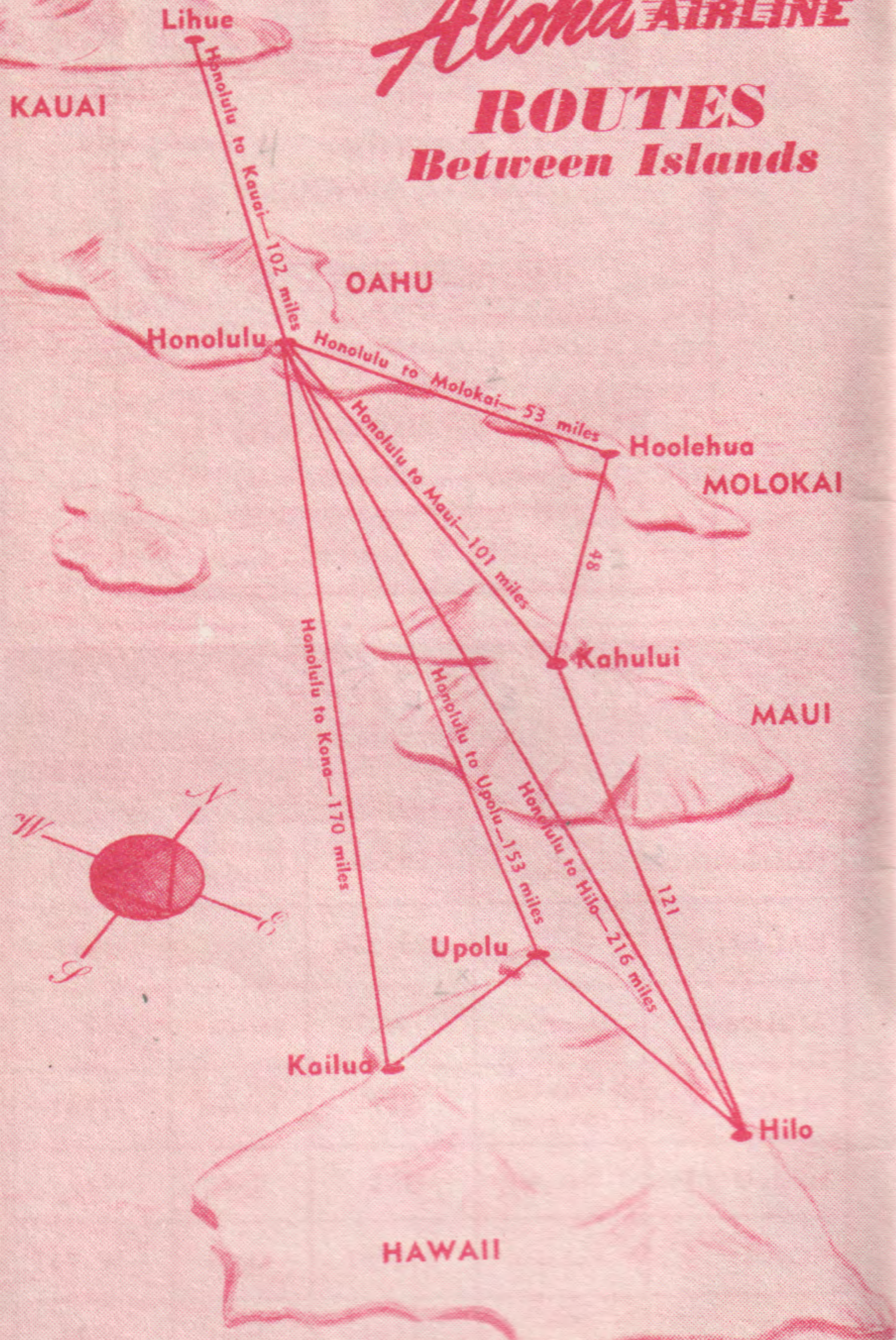
Offices On All Islands

POINT	OFFICE	TELEPHONE	AIRPORT	TELEPHONE
HONOLULU	King and Bethel	63591	Overseas Terminal	83911
KAUAI	Lihue Opp. County Bldg	383-384	Lihue	4511
MOLOKAI	Hoolehua	2-W-74	Hoolehua	2-W-74
MAUI	Wailuku 2068 Main	939	Kahului	72141
UPOLU PT.	Kohala	533	Upolu	533
KONA	Kainaliu	3-2762	Kailua	4-W-741
HILO	Hilo 116 Kamehameha	3393	Hilo	5331

TPA

Aloha AIRLINE

**ROUTES
Between Islands**



**Native Diving Boys
Greet Ship Arrivals**



Wide-eyed malihinis, absorbing every bit of Hawaiiana they can from the moment they step on ship board on the west coast, have been absorbed by the native diving boys who flock around the liners as they dock at the Honolulu piers.

The career of these young men is not particularly profitable unless a generous arrival tosses 50-cent or dollar pieces overboard. The boys average barely \$2 a ship apiece, sometimes less, as they cavort in the deep green water around the docks.

The divers are organized under the name of the Hawaiian Divers association which has both senior and junior members. There are safety rules and rules of conduct. The diver must prove himself capable of holding his own with others as the shiny coins plunge into the water.

Whether or not it is profitable, it is another bit of Pacific glamour that greets the newcomer to the islands.

COCO PALM Lodge

"Kauai by the Sea"

**SWIMMING BOATING
GOLFING
GOOD FOOD
BAR SERVICE**

Make reservations at any
Aloha Airline ticket office

Lihue, Kauai





Here's How To Order Fish

How's your Hawaiian for a stay in the Islands? Of course you learn right off those frequently heard and highly musical words—malihini, kamaaina, wahine, pau, kapu, mahalo, and of course more frequently than any other, aloha!

Let's take marine terms and words for fish. You'll see many on menus. Here are a few others:

Kai means sea, moana means ocean; kai emi, ebb tide, kai nui or kai piha, high tide; kai maloo, kai make, low tide; kai koo, rough sea; one, sand; kahakai, seabeach; limu (and they make salad of some of these), seaweed; ko'a, reef.

I'a is the word for fish, ula for lobster, wana for sea-urchin and ohiki for sand-crab. When you hear the cry "mano," that's shark. Malolo is flying fish; papa'i, crab; mahimahi, dolphin; a'u, sword fish; opae, shrimp; opihi, shellfish; hee is squid and kohola, whale.

TPA FLIGHT FACTS

Smoking Permitted

TPA Aloha Airline, as one of the scheduled airlines of the United States, allows smoking on all Alohaliner flights.

Smoking is permitted on all scheduled airlines on the Mainland and elsewhere throughout the world.

On TPA's modern DC-3 Alohaliners there's no reason why passengers should not be permitted to smoke.

Exclusive "tropic-tailored" ventilation in each TPA Alohaliner provides a complete change of sky-fresh air in the cabin every 60 seconds. Moreover, even the fabrics in each Alohaliner cabin is fire resistant, meeting government requirements.

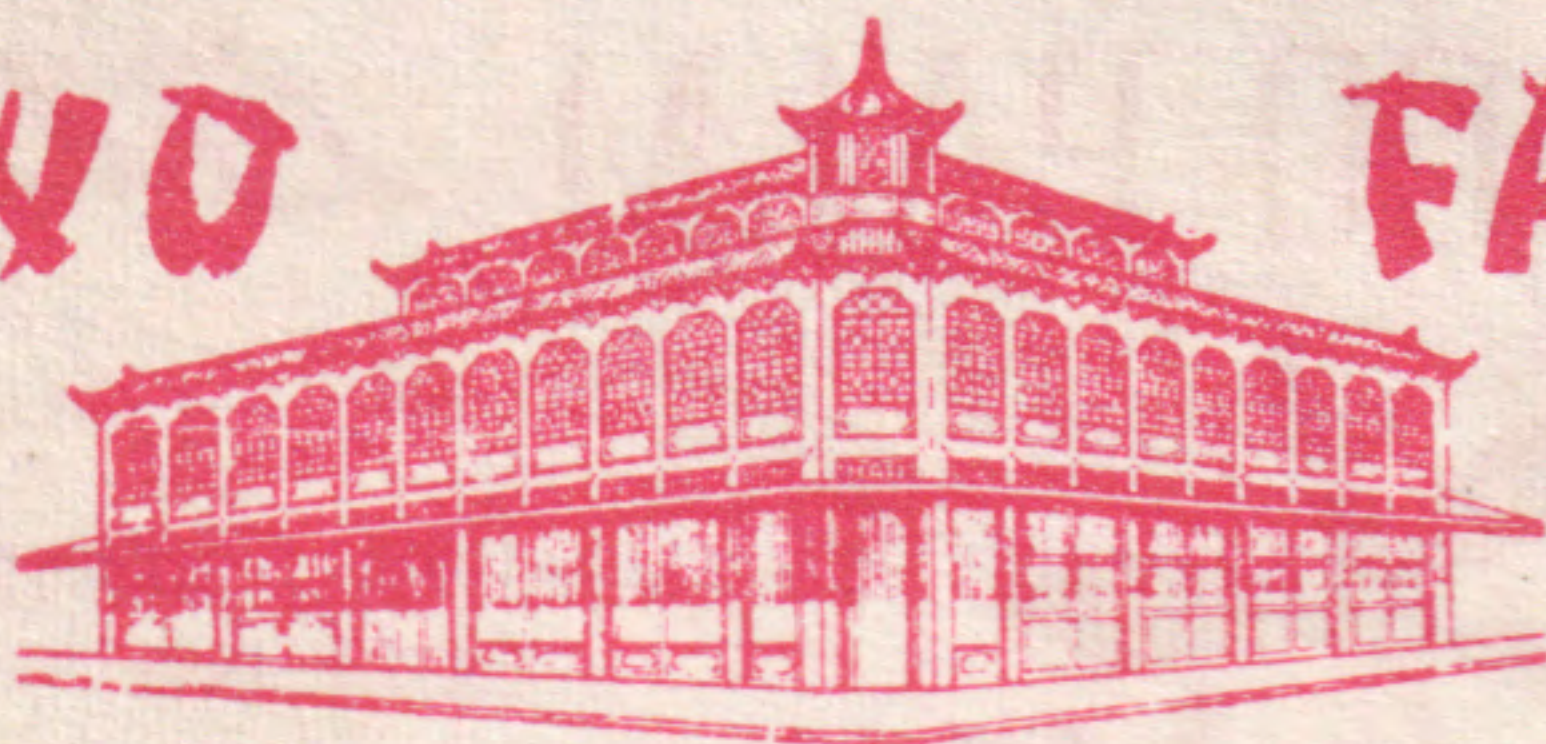
Smoking is prohibited only during take-off and while landing.

Open Shutter

Shutter bugs fly with their cameras and often get beautiful photographs through Alohaliner windows. Recommended: hold the camera at right angle to the window or shield the pane to avoid reflection; use haze filter against cloud glare; speeds of 1/100th to 1/200th in bright sunshine will stop motion when you shoot at the ground.

W O

F A T



"Oldest Chop Sui House In Hawaii"

OPEN 7 DAYS A WEEK - 10:30 A.M. TO 9:00 P.M.

TELEPHONES 57260-57166

Cor. Hotel & Maunakea Sts.
In the Heart of Chinatown

Honolulu, Hawaii

Rusty's Florist —

SHIPPERS OF HAWAII'S TROPICAL
FLORAL ARRANGEMENTS

PH. HON. 4-0553
48 WILIKINA DRIVE
P. O. BOX 272
WAHIAWA, OAHU, T. H.

Delivery any where in Honolulu

Valuable Information For Alohaliner Passengers

AIR EXPRESS—All ALOHALINER flights carry Air Express. Pickup and delivery service available. Air Express is fast. Call nearest ALOHA AIRLINE office for rates and other information.

AIRMAIL TPA ALOHALINERS carry Air Mail and Air Parcel Post between islands.

AIRPORT FACILITIES—The ALOHA AIRLINE is only airline flying between Islands which accommodates passengers through luxurious Overseas Terminal at Honolulu International Airport. Modern terminal facilities are also main-



tained on Neighbor Islands.

BAGGAGE—Each ALOHALINER passenger is allowed 40 pounds free baggage. Excess baggage accepted, space and weight permitting, at Air Express rates. Mainland bound or arriving passengers permitted 66 pounds.

CHILDREN—Children under 12 years of age are charged one-half the adult fare, except that one child under 2 years of age, not occupying a seat, may be carried free with each accompanying full-fare passenger. ALOHALINER stewardesses cheerfully help parents with children.

EQUIPMENT—All flights are operated with latest type Douglas DC-3 28-passenger ALOHALINERS. TPA ALOHALINERS are specially equipped with tropic-tailored ventilation, providing complete change of fresh air in cabin every 60 seconds. All aircraft maintained and inspected daily under strict Civil Aeronautics Administration rules.

FRAGILE & PERISHABLE ARTICLES—These are carried at risk of passenger. Passengers are warned not to pack acids, matches, lighter fluid, liquids and other hazardous articles in baggage.

GROUND TRANSPORTATION—Independently operated ground transportation is available at reasonable rates at all points served by the ALOHA AIRLINE. Ground transportation including U-drive cars may be arranged in advance when you make flight reservation. Hotel reservations similarly may be arranged for you by TPA at no extra cost.

PETS—Animals will be carried only when confined in suitable container, and only at express rates at owner's risk and subject to tariff regulations.

STOP-OVERS—Stop-overs allowed at any regular stop provided a reservation is made accordingly. There is no extra charge.

TERMINAL REPORTING TIME—In the interest of on-time service, passengers are requested to check in at airport 20 minutes before published departure time, and may be refused passage if arriving less than five minutes before departure time.

FISHERMAN'S WHARF

Honolulu's Newest and Most Popular Seafood Restaurant

at Kewalo Basin, Honolulu

• SEAFOODS & STEAKS

OYSTERS
CHIOPPINO
CLAMS

Sampan Bar



PRIVATE PARTIES

UP TO 45
IN THE
FO'C'SLE



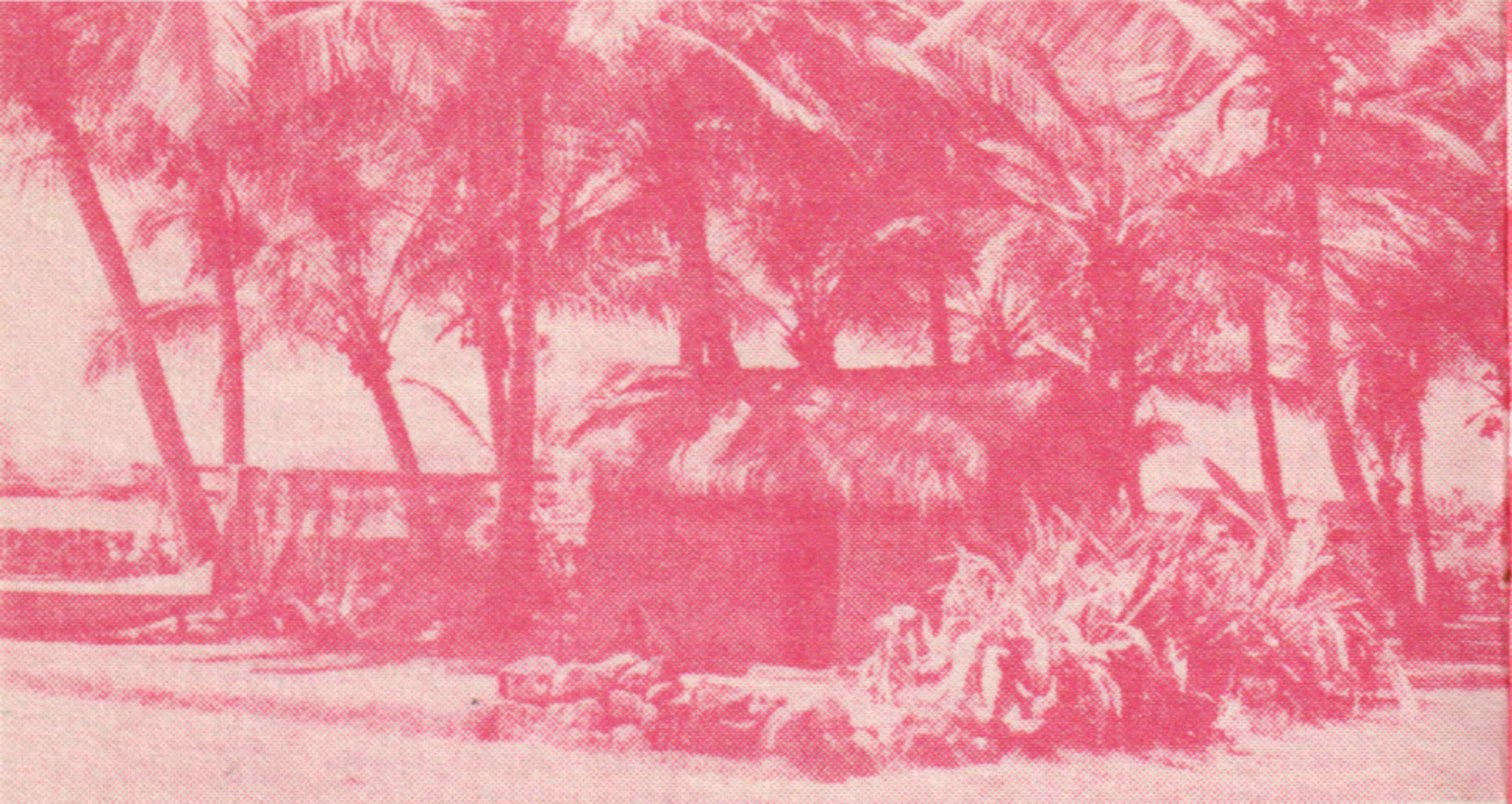
See All Of Hawaii

Travel with native
Hawaiians who know
the Islands best.

HAWAIIAN TOUR & TRAVEL SERVICE

on the beach at Waikiki

2234 Kalakaua Ave. Phones 902115-915135-906195



GRASS HUT on the Kona coast of the Big Island helps keep old Polynesia alive. This hut is located on the grounds of Kona Inn, Kailua.

TPA Aloha Airline Offers Freight Service

While TPA Aloha Airline does not operate special cargo flights, it does operate regular freight service in connection with passenger flights.

TPA accommodates all types of freight not in excess of weight and space limitations.

Persons wishing to air-freight items from Honolulu to neighbor islands should take them directly to Hawaiian Freight Forwarders located at the Honolulu airport in the west end of the quonset hut occupied by United Air Lines flight kitchen.

SEE ALL THE ISLANDS
HAWAII, MAUI, MOLOKAI,
OAHU, KAUAI

FINE BOOKS about Hawaii and the Pacific

1. **BIRDS OF HAWAII.** George C. Munro. \$2.00. Illustrated descriptions of Island birds.
2. **MELE AND THE FIRE WOMAN.** Helen Berkey. \$1.50. A favorite children's story of Hawaii.
3. **TRADE WIND TALES.** Wade Warren Thayer. \$1.50. Collected short stories with Hawaiian settings.
4. **FLOATING ISLAND.** Kathryn J. MacFarland. \$1.50. Word pictures of Hawaii's beauty.
5. **IN SOUTHERN SEAS.** Gurre P. Noble. \$1.50. Rhymes to remind one of South Sea isles.
6. **PATTERNS IN TAPA.** Gurre P. Noble. \$1.00. Hawaii described by a gifted poet.

Available through most book sellers or order here.

USE THIS ORDER FORM

Please mail to me, postpaid, the books indicated.
(circle number as listed above)

1 2 3 4 5 6

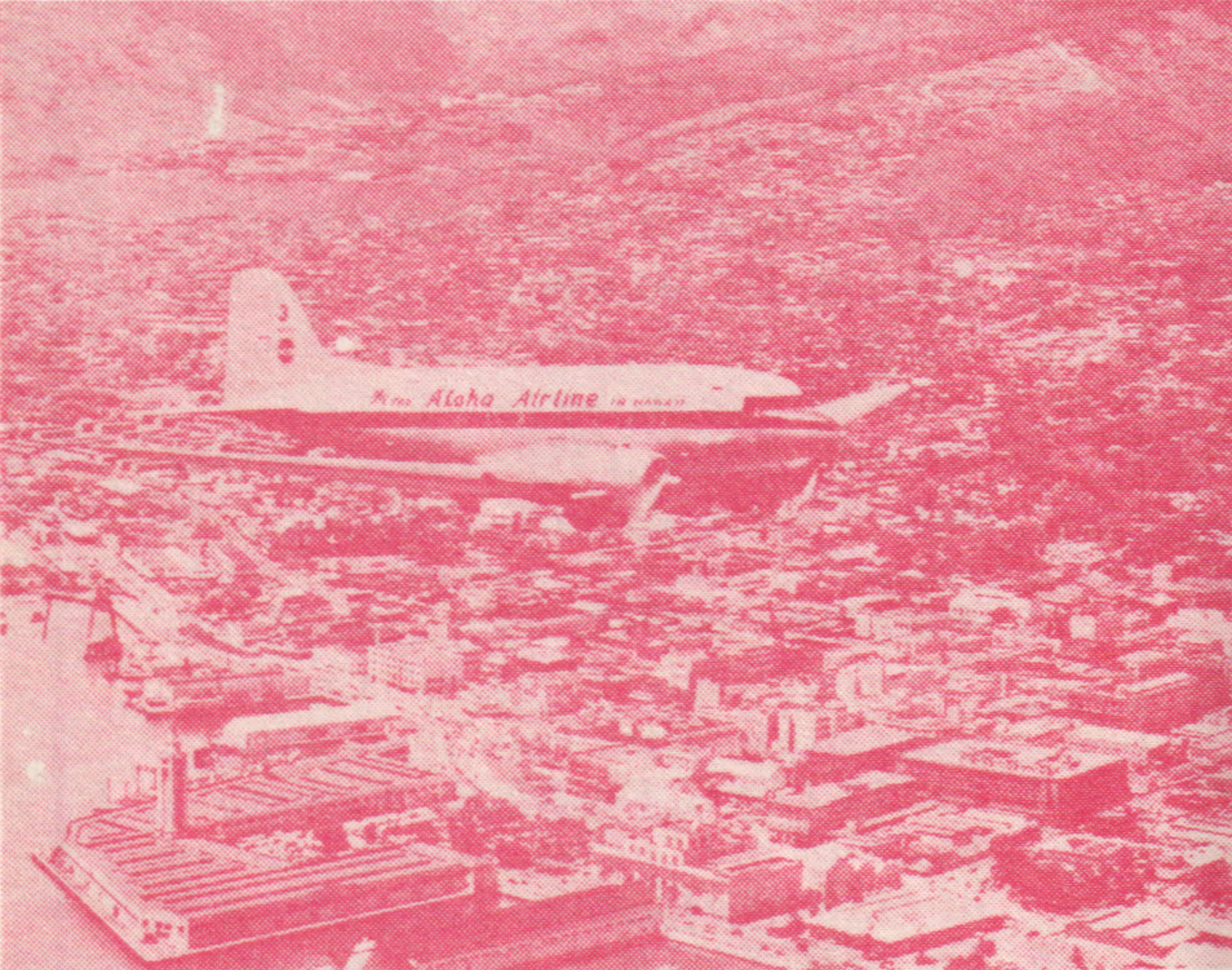
I enclose my money order (or check) for \$_____

Name_____

Address_____

City_____ State_____

TONGG PUBLISHING COMPANY, LTD.
P. O. Box 2113 • Honolulu, Hawaii



Douglas DC-3 Sets Another Record

A Douglas C-47, known commercially as the DC-3, made aviation history recently by landing on the top of the world.

It was the first plane to dare a landing and take-off at the North Pole. The Douglas plane, known fondly as "the workhorse of the air," was chosen for the mission by the U.S. Air Force because of its dependability, proved under roughest conditions, from the tropics to the poles.

Commercially, since 1936, the Douglas DC-3 has flown more than seven billion scheduled miles—equivalent to 290,000 times around the world.

This record of dependability is the reason TPA Aloha Airline flies super-dependable Douglas DC-3s exclusively. DC-3 history speaks for itself. It has flown the tests of time, and has outlived many contemporaries, now obsolete.

February Month Of Narcissus Festival

Mainland visitors, who plan to take plane or ship to Hawaii the early part of the year, should keep in mind the beautiful Narcissus Festival, a week-long celebration by the Honolulu Chinese community.

Because Chinese New Year is based on the lunar calendar which changes from year to year, firm dates are unavailable. Sometimes the holiday falls in January and more often in February.

The fascinating Narcissus festival, scheduled this coming season February 8-15, includes a parade of lion, unicorn, and dragon dancers, floral and fireworks displays, reception, mandarin banquet, Chinese play in English dialogue and coronation of a Chinese-American beauty queen.

Language Papers Reflect Populace

It makes no difference if you speak English, Chinese, Japanese, Filipino, or Korean, there is a newspaper or periodical printed in the Territory of Hawaii, for your personal consumption. The island of Oahu alone has 13 newspapers.



HERTZ DRIVE-UR-SELF SERVICE

●
New Sedans & Convertibles
Comprehensive Insurance
Special rates to Kamaainas and to Businessmen

●
**LOCATIONS: Opposite Young Hotel
2060 Kalakaua Avenue - 2358 Kalakaua Avenue
Phone 95222**

Hawaii Golfers Play Year Round

Hawaii may be a little short in the snowball department but golf balls zing through the air all winter long on five tropic resort islands.

Vacationers and islanders wallop away 12 months a year on green courses by the sea or high in scenic valleys. There's no reprieve for the golf widow in a sportsman's paradise where every day is an outdoor day.

Ambition of the most trueblue golfers hitting Honolulu is Waialae, the championship course along the shore beyond Diamond Head. Waialae's 18 holes are in a setting so spectacular it's a legitimate excuse if vacationers aren't quite up to par. An ocean panorama stretches along one side of the course. The forested Koolau mountains rise into still, white clouds on the other.

Only one improvement has been suggested by visiting golfers. A recent foursome wanted grass-skirted girls as caddies, a thought which developed on the 19th hole.

Kona Coffee Is Hawaii Grown

Occasionally the mainland shopper will see Kona coffee on the shelves of hometown grocery stores. In Hawaii, a wide variety of brands bear the name Kona and it is one of the principal agricultural products exported from the territory.

Approximately 3,500 acres are planted in coffee in the Kona area of the Big Island of Hawaii, hence the name. Much of the planting is in small plots, from five to 10 acres, in elevations from 1,000 to 2,000 feet above the sea.

During the year 1950-51, six million pounds of green coffee beans were harvested, with an approximate value of \$2,700,000

Northerners Swap Snow For Sand

Holiday visitors are thronging the beaches of Waikiki, the resort spots on the neighbor islands, and basking in a bright winter sun which they are exchanging for snow storms on the mainland.

Already the winter flowers are showing rich profusion, particularly the poinsettias. Shops are filled with items from all over the world, hand carvings from Switzerland and the orient, wines and laces from France, silk saris and silver jewelry from India, copper from Sweden, silks and cottons from Japan and there are even brocades from China still available.



Hawaii's own products, particularly the monkeypod wood carvings and the lauhala mats, bags, hats and baskets, vie for visitor interest with the fruits of the land such as pineapple, papaya, guava, coconut and poha interestingly preserved for souvenir giving.







COCKTAIL LOUNGE
AND RESTAURANT
DANCING NIGHTLY
**THE SPOT
IN WAHIAWA**

DOT'S

130 MANGO ST.

		COMPLETE EASTBOUND <i>Alohaliner</i>					SCHEDULES FROM HONOLULU						
READ DOWN	DAILY	DAILY	DAILY	DAILY	DAILY	Sunday Only	Daily Except Sunday	DAILY	DAILY	DAILY	READ DOWN		
	50	40	72	60	48	44A	44	62	52	46			
HONOLULU	Lv 7:25	Lv 8:00	Lv 8:15	Lv 9:55	Lv 12:00	Lv 12:40	Lv 1:10	Lv 2:30	Lv 4:00	Lv 4:10	HONOLULU		
MOLOKAI	Lv 8:05								Lv 4:40		MOLOKAI		
MAUI	Ar 8:35		Ar 9:05	Lv 10:55				Lv 3:30	Ar 5:10		MAUI		
UPOLU						Lv 1:55					UPOLU		
KONA						Ar 2:25	Ar 2:25				KONA		
HILO		Ar 9:35		Ar 11:50	Ar 1:35			Ar 4:25		Ar 5:45	HILO		

		COMPLETE WESTBOUND <i>Alohaliner</i>					SCHEDULES TO HONOLULU						
READ DOWN	DAILY	DAILY	DAILY	DAILY	DAILY	Sunday Only	Daily Except Sunday	DAILY	DAILY	DAILY	READ DOWN		
	73	41	51	49	61	45A	45	53	63	47			
HILO		Lv 9:50		Lv 12:10	Lv 1:50				Lv 4:45	Lv 6:00	HILO		
KONA						Lv 2:35	Lv 2:35				KONA		
MAUI	Lv 8:45		Lv 9:15		Lv 2:55			Lv 5:20	Lv 5:50		MAUI		
MOLOKAI			Lv 9:45					Lv 5:50			MOLOKAI		
HONOLULU	Ar 9:30	Ar 11:10	Ar 10:15	Ar 1:30	Ar 3:40	Ar 3:45	Ar 3:45	Ar 6:20	Ar 6:35	Ar 7:20	HONOLULU		

		COMPLETE <i>Alohaliner</i>				SCHEDULES BETWEEN HONOLULU AND KAUAI					
READ DOWN	DAILY	DAILY	DAILY	DAILY	READ DOWN	DAILY	DAILY	DAILY	DAILY		
	21	23	27	29		22	24	28	30		
HONOLULU	Lv 7:35	Lv 10:15	Lv 2:10	Lv 4:35	KAUAI	Lv 8:35	Lv 11:15	Lv 3:10	Lv 5:35		
KAUAI	Ar 8:20	Ar 11:00	Ar 2:55	Ar 5:20	HONOLULU	Ar 9:25	Ar 12:05	Ar 4:00	Ar 6:25		

Light Face Type (10:40) Indicates A.M.

Dark Face Type (10:40) Indicates P.M.

TPA Extends Island Communication System

TPA Aloha Airline has installed two more radioteletype machines to improve its communications between Islands and to expedite reservations service. That brings to five the number of machines at its downtown Honolulu office.

This additional equipment provides the Aloha Airline's reservations personnel with separate direct circuits to all other stations. Information is exchanged instantly between any islands, so that reservations for any flight can be confirmed in seconds.

Communications are controlled from the Aloha Airline's downtown Honolulu office and connect with stations on islands of Kauai, Molokai, Hawaii, Maui, and airport dispatch.

In addition to these five radioteletype circuits for TPA reservations, the Aloha Airline operates other circuits from Honolulu International Airport for the transmission of operational data and weather information.

160 Airlines Fly DC-3s



In the next hour, Douglas airplanes will travel five times around the world.

Day after day, Douglas "DC" airplanes fly about 3,126,500 miles for 160 leading airlines. That amounts to more than five times around the world every hour! Douglas airplanes link all the continents, and span the seven seas.

And TPA Aloha Airline's dependable DC-3 Alohaliners link the Hawaiian Islands with scenic routes unsurpassed anywhere. Douglas airplanes have large windows, designed for "flight-seeing."

The Aloha Airline flies dependable Douglas DC-3s exclusively. It is the world's most proven aircraft. The DC-3 has established itself as a passenger carrier excelled by none, after having won battle honors in every combat theater during the war. Today twice as many people fly Douglas airplanes as all other airplanes combined.

TPA Aloha Airline helps maintain that record of air dependability, and is convinced there is none better than the DC-3 for between-Island hops.



SEA VIEW INN

Sea Food
Our
Specialty
•
Cocktails
•

Haleiwa Beach

Phone 2-B-703



for
**REAL HAWAIIAN
ENTERTAINMENT**

- SEE • Authentic Hulas
- Spectacular Fire Dance
- Exciting Sword Dance

Excellent Food • Tropical Drink

- No Cover Charge

3 shows nightly
9 p.m. till after midnight

Waikiki Tavern

2437 Kalakaua Ave.



YOU DON'T have to have the sun behind you for a good picture. Try facing a low sun. Results: a silhouette.

Junior Solos Safely With TPA

TPA Aloha Airline has made it easier for parents to send their children unaccompanied between Islands without worry about Junior reaching his final destination.

Each unaccompanied child on a TPA flight receives a small pocket-size envelope to be attached necklace-fashion around the little passenger.

On one side, the envelope bears the child's name, age, home address, name of person meeting the child, and destination address and telephone number, along with special instructions regarding the youngster.

That information is transmitted via TPA radioteletype from station of origin to station of destination as soon as the flight is dispatched. Then the person meeting the child is contacted, or if no one is there, the Aloha Airline station manager makes certain he reaches his destination safely.

Money provided by parents for the child's meals and taxi fare is inserted in the coin envelope.

Grass Hut Village Delights Tourists



The little grass shacks of Hawaii went out years ago and live now only in jingly little songs of the islands. But though Hawaiians no longer live in the glamorous little grass huts, nor do they wear grass skirts, there is an authentic old Hawaiian village in Honolulu.

The village is located in Ala Moana park alongside a picturesque lagoon and recreated as it might have been built in the 1780 or 1800 period. It is situated in the midst of a stately grove of tall coconut trees and affords the most attractive site of old Hawaiiana to be offered in the city.

A photographer's delight, the little grass shack has formed many a background for a mainland visitor to take back as memory of these beautiful islands.

RUDDLE'S U-DRIVE **Island of Hawaii**

FORD AND MERCURY CARS

**For Your Convenience—Airport Pick-up
and Delivery Service**

Rates: \$6.00 per day—12¢ per mile over 50 miles.
Weekly and monthly rates upon request.

Phone 2191 7 a.m. to 5 p.m.—After hours phone 37383
Hilo, Hawaii

Associate U-Drive operators on All Islands
All reservations can be confirmed by any TPA office.



ONE PHONE CALL to any TPA Aloha Airline reservations office and your complete between-Islands trip is arranged.

Mainland Flowers Used In Leis

Newcomers to Hawaii are intrigued with the island custom of lei giving and frequently carry this custom back to the mainland for party favors.

The simplest lei to make is the kui or strung lei and this is the type presented to you when fashioned of tuberose, freesia, gardenia, carnation, plumeria or vanda orchid.

On the mainland, the strung lei would be attractively created of aster, honeysuckle, which is also used in Hawaii but not as frequently as other flowers; cornflower, strawflower, marigolds and daisies, medium sized chrysanthemums for fall parties, and even coreopsis. The carnation lei would prove too expensive, and the gardenia blackens easily, but both are perfectly lovely.

Island Buy-Ways



HAWAII CAMERA SALES CO.

For Leica, Graflex, Bell & Howell, Rolleiflex, Kodak, Canon, Exakta, Contax, Polaroid Land, Stereo Realist and other world famous camera equipment, see Hawaii Camera Sales Co. Easy monthly payments arranged. Phone 5-9860, 1109 Alakea St., Honolulu.

KODANI FLORISTS

Send a touch of old Hawaii to friends and relatives on the Mainland. Say "aloha" with orchid leis and tropical flowers. Airmail services available. For price lists write 307 Keawe Street, Hilo, Hawaii. Phone 5353.

RUSTY'S FLORIST

Here are just a few of our most popular floral arrangements and mainland mailing prices. Hawaiian Bouquet (assorted, carefully selected cut flowers) \$7.50. Maunaloa type Vanda orchid lei (250 blooms) \$6.50. Cattleya orchids (large size in lavender) \$4.50 to \$5.50. Delivery anywhere in Honolulu. Phone 4-0553.

TONGG PUBLISHING CO.

Learn about Hawaii, its birds, its flowers, its language and legends, its arts and its dances—from fine books written and published in the Islands. They make lovely gifts. See full page ad in this booklet for selections and order form. P. O. Box 2113, Honolulu.

TPA ALOHA AIRLINE

P. O. Box 3769, Honolulu 11, Hawaii

**Phone 63591 Reservations
64471 General offices**

Wine, Dine And Dance



CHEZ MICHEL

A bit of France with Hawaiian flavor. Truly unexcelled cuisine served to the peak of perfection. "Michel" can suggest just the perfect taste treat for luncheon, dinner or snacking. 136 Wilikina Drive, Wahiawa. Phone Wah. 3283.

CITY GRILL

72 So. King St. in Downtown Honolulu has Island-wide reputation for tasty foods and courteous service. Choice steaks, chops, seafoods and fresh salads. 6 a.m. to 12 p.m. Mon. to Sat., 9 a.m. to 12 p.m. Sunday.

COCO PALM LODGE

Restful and relaxing, by the sea at Wailua, where motion picture Pagan Love Song was filmed. Swimming, boating, golfing. Good food. Bar service. Single, \$5 to \$10; double, \$8 to \$15; European. American plan rates on request.

DOT'S (The Spot In Wahiawa)

Aside from excellent food, wonderful service, pleasant surroundings, Dot's also features dancing nightly. Momi Jones and her trio (Sammy, Twerp, Ray) are currently appearing. All of us at Dot's wish to take this means of wishing you all a Mele Kalikimaka.

FISHERMAN'S WHARF

Picturesquely situated on Honolulu's fishing fleet quay, 1009 Ala Moana Blvd. Specialties: all manner of Island fish, oysters on the half shell, abalone steaks, steamed clams, chioppino, etc. Cocktails, draft beer, superb wines. Real atmosphere.

PETE'S PLACE

"Pete" Shimomoto and all the folks at Pete's Place wish their many friends, and visitors, a very Merry Christmas and a prosperous New Year.

QUEEN'S SURF

Directly on the beach at Waikiki. Serving Prime Eastern corn fed steer steaks; double thick French lamb chops. Hawaiian entertainment featuring Jake

Keliikoa at the steel guitar and Moriah, vocalist. Fri. thru Mon. Phone 9-6349 for reservations.

ROCCO'S ITALIAN FOOD

Featuring pizza, veal scallopini, chicken a la cacciatore, spaghetti, ravioli. Minestrone soup. Open 12 noon till 3 a.m. Dinners delivered anywhere in Honolulu. 1900 Kalakaua in Waikiki. Phone 90-8155.

SEA VIEW INN

Located at picturesque Haleiwa Beach, is just the spot to stop for luncheon or dinner when making that trip around the Island. Sea food our specialty. Cocktails. Phone 2-B-703.

SKY ROOM

Located at Honolulu International Airport, "The Crossroads of the Pacific." Exotic foods, cosmopolitan atmosphere, all blended to create a dining room that seasoned travelers, and arm chair explorers, come to again and again. Open 5 p.m. till 11 p.m.

THE HILO HOTEL

Businessmen and tourists both enjoy the informal hospitality and convenience of this friendly hotel on the Big Island. Reasonable rates and fine service have made it a longtime favorite.

THE VOLCANO HOUSE

You haven't seen Hawaii until you arrive at The Volcano House in the heart of Hawaii National Park.

Waikiki
LAU YEE CHAI
Kalakaua & Kuhio • Phones 998753 - 992487



**Cantonese Cuisine Superb • Cocktails in the
Gung Ho Bar**

It's one of the world's best known, most unique resorts.

TOP HAT

Golfers, attention! Miss that last putt? "Top Hat" offers a solution to all your difficulties . . . "Top" drinks! "Top" relaxing! "Top" atmosphere! At the "Top Hat!" 69 Kam Highway, Wahiawa. Phone Wah. 8131.

WAIKIKI LAU YEE CHAI

Lavish Chinese atmosphere in heart of Waikiki, located at Kalakaua and Kuhio Avenues. Superb Cantonese cuisine. Cocktails in the Gung Ho Bar. Telephone 998753-99-2489.

WAIKIKI TAVERN

Authentic Hawaiian entertainment every night. Exciting sword dances. Dance of fire. Exotic hulas. Excellent food. Tropical drinks. Try our famed salad bar and merry-go-round bar. On the beach at Waikiki.

WO FAT

A visit to this colorful restaurant is a must on your Island itinerary. We take pride in our chef who is tops in Chinese cuisine. Economy luncheons and dinners for groups of any size. We specialize in 9 course dinners for parties of all occasions. Phone 5-7260. Hotel and Maunakea Sts.

ROCCO'S

ITALIAN PATIO
IN WAIKIKI



Specializing in

ITALIAN DINNERS
HOME-MADE RAVIOLI
PIZZA PIE, ANY STYLE

McCully at Kalakaua • Phone 90-8155

U-Drive Cars And Taxi Service



ACHOR'S KAUAI MOTOR TOURS (Gray Line)

Late model U-DRIVE CARS & Sedans with DRIVER-GUIDE available at the LIHUE AIRPORT—Credit cards honored. We also operate daily GRAY-LINE Sightseeing Tours. For rates or reservations contact your TRAVEL AGENT, or ACHOR'S GRAY LINE desk in Lobby, Lihue Airport Bldg.

DRAKE'S U-DRIVE, TAXI AND BUS SERVICE

Special trips around the island. 5-passenger cars, \$7.50 per day first 70 miles, 12¢ thereafter; 7-passenger cars, \$15.00 first 70 miles, 15¢ thereafter. For reservations write P. O. Box 1702, 74 Mamo St. Phone 2221, Hilo.

GRAY LINE HAWAII

Competent Gray Line service is as close to you as the airport terminal! Metered cabs . . . limousine service . . . transportation to meet YOUR needs. In Honolulu, dial 9-5221.

HERTZ DRIVE-UR-SELF SERVICE

Outstanding service throughout the nation and Oahu. New Chevrolet sedans and convertibles—comprehensive insurance. Special rates to kamaainas and businessmen. 3 convenient Honolulu locations. Call 95222.

RUDDLE'S U-DRIVE

Excellent U-Drive service in Hilo. Airport pickup and delivery service. Rates: \$6 per day—12¢ per mile over 50 miles. Phone 2191 from 7 a.m. to 5 p.m. After hours phone 37383. Or call any TPA office.

WAILUA RIVER EXCURSION

On Kauai, take the Wailua River trip to see the Fern Grotto. Hear Hawaiian Legends. Hekka party on board or at picnic grounds. For reservations or information, call 5W173 or write P. O. Box 213 Kapaa, Kauai, or inquire at any TPA ticket office. Reliable licensed boat operators.

