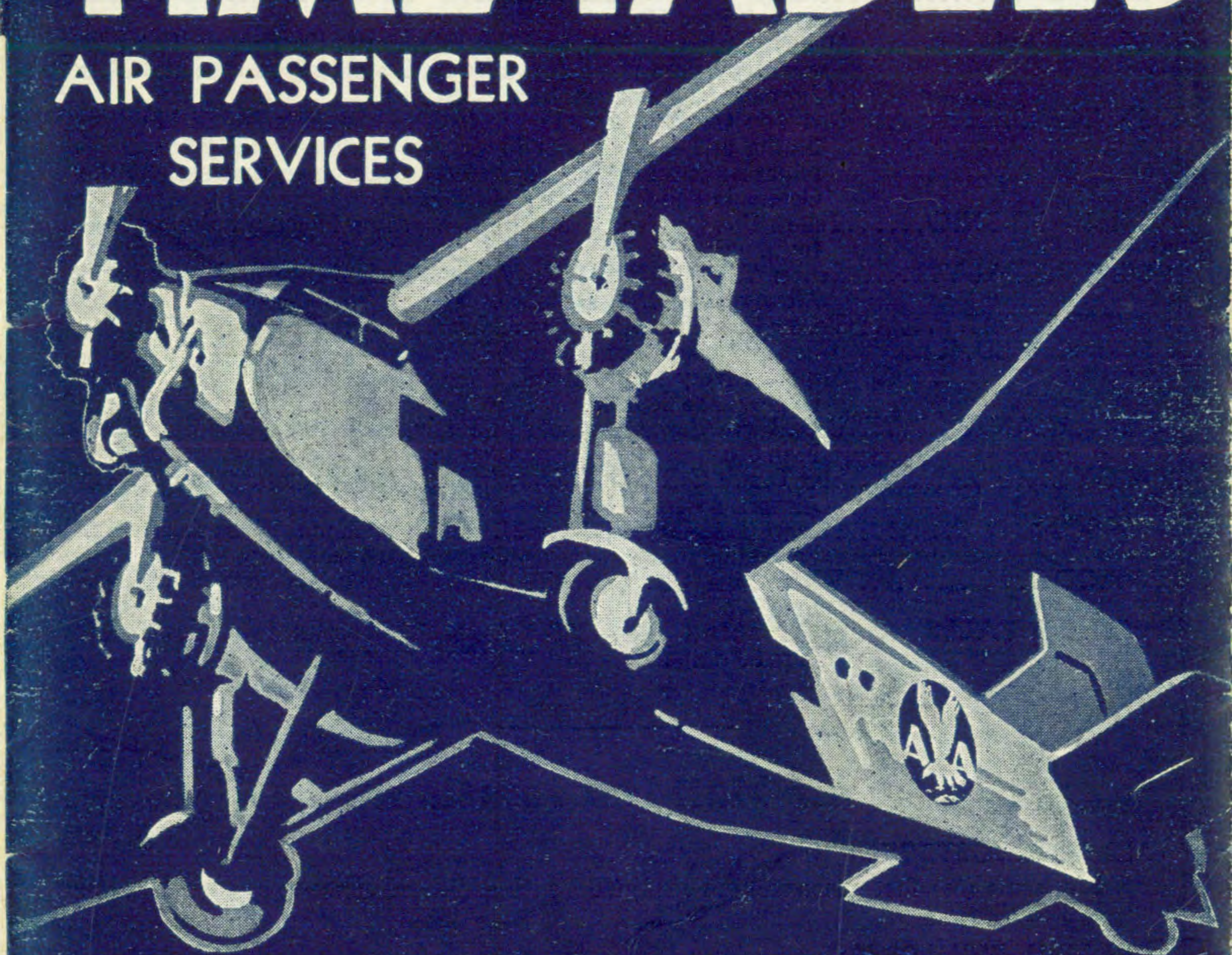




AMERICAN AIRWAYS TIME TABLES

AIR PASSENGER
SERVICES



COAST to COAST

CANADA to the GULF

AMERICAN AIRWAYS INC

NEWARK ♦ CINCINNATI ♦ NEW YORK ♦ ST. LOUIS ♦ DALLAS

Corrected to June 15, 1932



AMERICAN AIRWAYS TIME TABLES

A Nation-Wide Network of Airlines

Serving 63 of the principal American and Canadian cities with scheduled air transportation, American Airways, Inc., is one of the world's outstanding air transport companies. Its operating procedure is the result of experience gained conducting scheduled plane services since 1926, flying more than 28 million miles in all sections of the United States.

On all its lines, American Airways employs the finest equipment, the highest trained personnel, that can be secured. Modern planes, designed especially for their purpose, subject to constant and thorough inspection, are flown by veteran pilots. Radio, radio beacon, lighted airways (where night flying is conducted), lighted airports, advance weather reports from Government and special American Airways weather observers—every proven aid to swift, safe air transportation is in constant use throughout the American Airways system.

American Airways is organized to serve the traveling public with the finest in modern transportation. Wherever your needs take you—whether you go for business or pleasure—use American Airways for speed, for comfort and for safe arrival—"from Coast to Coast; from Canada to the Gulf."

F-100-6-32

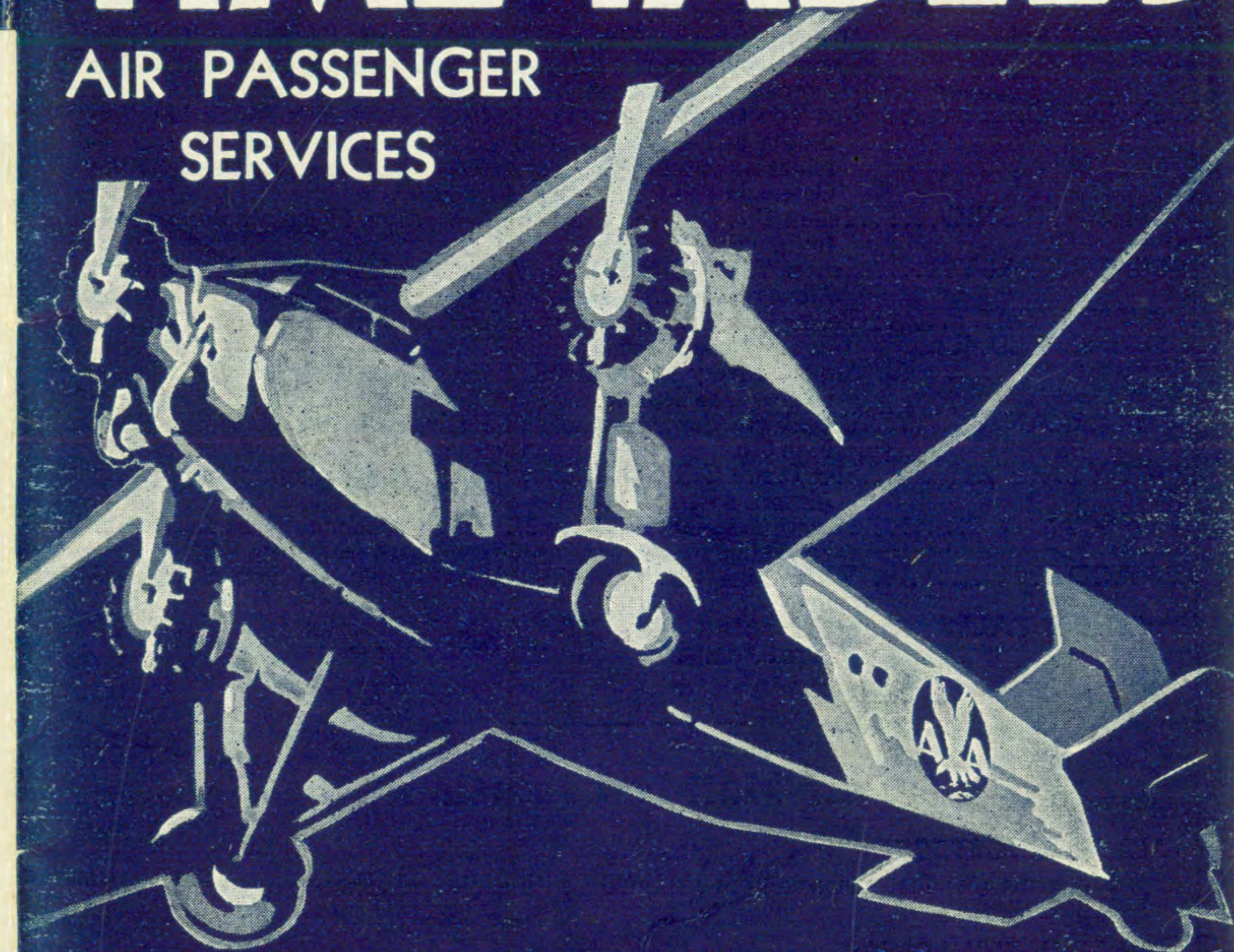
Printed in U.S.A.

AMERICAN AIRWAYS INC
NEWARK ♦ CINCINNATI ♦ NEW YORK ♦ ST. LOUIS ♦ DALLAS



AMERICAN AIRWAYS TIME TABLES

AIR PASSENGER SERVICES



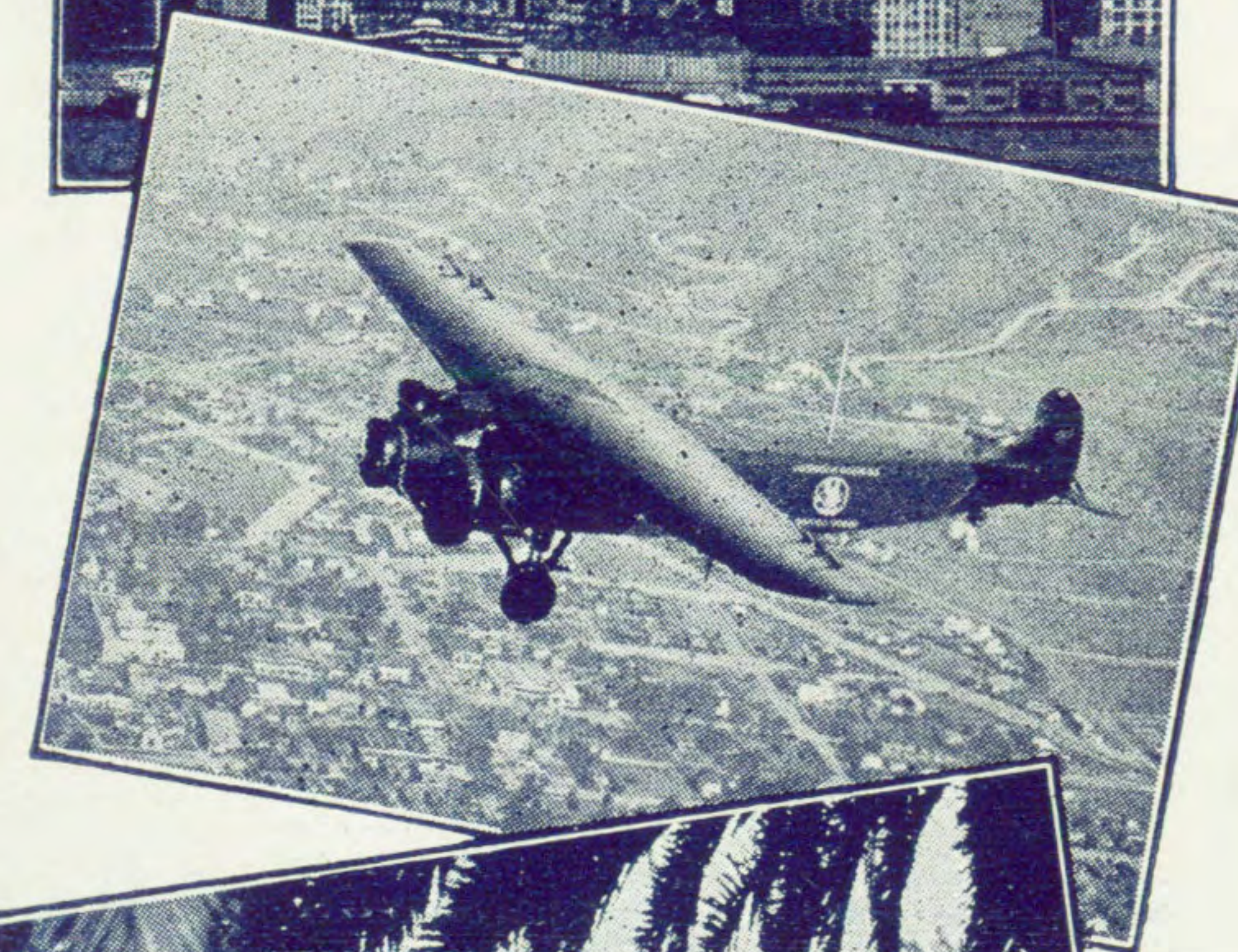
COAST to COAST

CANADA to the GULF

AMERICAN AIRWAYS INC
NEWARK ♦ CINCINNATI ♦ NEW YORK ♦ ST. LOUIS ♦ DALLAS

Corrected to June 15, 1932

COAST to COAST



Top: New York Skyline. (Ewing Galloway)
Center: American Airways plane in Coast-to-Coast service.
Bottom: A Los Angeles public park. (Ewing Galloway)

WESTBOUND

Lv. New York	6.20 p.m. (N.Y.C.)
Boston	3.40 p.m. (N.Y.C.)
Atlanta	8.35 a.m. (A.A.)
Chicago	8.45 a.m. (A.A.)
Ar. Los Angeles	7.13 a.m.
Ar. San Diego	7.00 a.m.

EASTBOUND

Lv. San Diego	4.35 p.m.
Lv. Los Angeles	4.40 p.m.
Ar. Chicago	5.13 p.m. (next day)
Atlanta	6.04 p.m. (next day)
New York	9.05 a.m. (second day)
Boston	11.55 a.m. (second day)

See Tables 12, 17 and 33 for Complete Schedules

With the Loss of
Only ONE Business Day

New York—
— Boston — Atlanta — Chicago —

— to Los Angeles
or San Diego

by **AMERICAN AIRWAYS, Inc.**

Fair Weather — Low Level Route

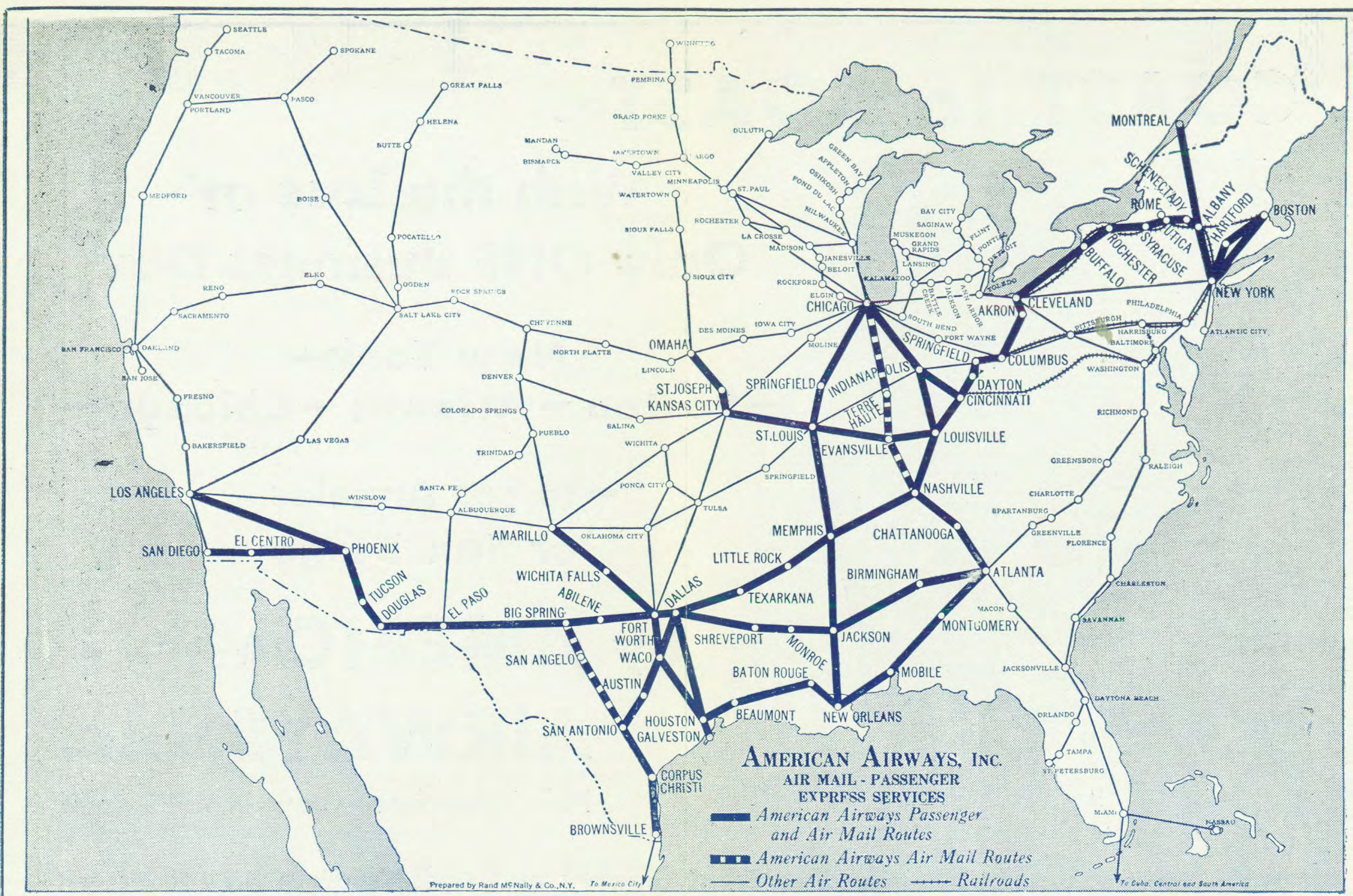
"Scenic Beauty and Cool Comfort All the Way"

Manhattan's towers and the famed Southern California Coast are now but a single business day apart — via the American Airways transcontinental route. So, too, are Boston, Atlanta, Chicago and intermediate cities along the route.

By convenient train-plane connections, the Westbound traveller journeys swiftly to Dallas, where he enjoys a delightful dinner. From Dallas, the plane continues that night to Los Angeles, arriving the next morning — or he may spend the night in Dallas, continuing the next day via American Airways plane. The Eastbound schedule is equally advantageous.

Reservations and complete information are obtainable through leading hotels, travel agencies, Postal Telegraph or Western Union Offices, or by calling or writing any American Airways Office.

AMERICAN AIRWAYS, INC.
COAST TO COAST . . . CANADA TO THE GULF



ALPHABETICAL INDEX

Alphabetical index listing cities served by American Airways or by connecting lines, with page numbers. Includes cities like Abilene, Akron, Albany, Amarillo, Atlanta, etc.

Corrected to June 15, 1932 ALL times shown are STANDARD. Where DAYLIGHT SAVING TIME is in effect ADD one hour

Table 1 Boston—Hartford—Newark—New York (z)

Table 1: Flight schedule for Boston-Hartford-Newark-New York routes, including Southbound (READ DOWN) and Northbound (READ UP) times.

Table 2 New York—Newark—Albany—Cleveland—Louisville (z)

Table 2: Flight schedule for New York-Newark-Albany-Cleveland-Louisville routes, including Westbound (READ DOWN) and Eastbound (READ UP) times.

Table 4 Cleveland—Cincinnati—Nashville—Atlanta (z)

Table 4: Flight schedule for Cleveland-Cincinnati-Nashville-Atlanta routes, including Southbound (READ DOWN) and Northbound (READ UP) times.

Table 3 Cleveland—Indianapolis—Nashville—Ft. Worth—San Antonio—Houston (z)

Table 3: Flight schedule for Cleveland-Indianapolis-Nashville-Ft. Worth-San Antonio-Houston routes, including Southbound (READ DOWN) and Northbound (READ UP) times.

Table 5 Cleveland—Cincinnati—Indianapolis—Memphis—New Orleans (z)

Table 5: Flight schedule for Cleveland-Cincinnati-Indianapolis-Memphis-New Orleans routes, including Southbound (READ DOWN) and Northbound (READ UP) times.

Table 6 Cleveland—Cincinnati—Indianapolis—St. Louis (z)

Table 6: Flight schedule for Cleveland-Cincinnati-Indianapolis-St. Louis routes, including Westbound (READ DOWN) and Eastbound (READ UP) times.

b-Daily except Sunday. D-Makes connection at Dallas or Ft. Worth with overnight plane to Los Angeles or San Diego. See TABLE 12. H-Flag stop. j-Daily except Sunday and holidays. (z)-Carries air mail for the U. S. Post Office Department.



AMERICAN AIRWAYS

Operates over 9,573 miles of improved airways



AIR CONNECTIONS

Connections are not guaranteed, but every effort will be made to maintain them.

TRAIN-PLANE SERVICES

Table 17 Boston—New York—Dallas—Ft. Worth—Los Angeles—San Diego

Table with columns for South and Westbound READ DOWN, North and Eastbound READ UP, American Airways, N.Y.C. Train 11, N.Y.C. Train 12, and Penn. R.R. Train 65. Lists departure and arrival times for routes including Boston (E.T.), Hartford, Newark (E.T.), Springfield (E.T.), New York, Albany, Utica, Syracuse, Rochester, Buffalo, Cleveland, Newark, Washington, Baltimore, No. Philadelphia, Harrisburg, Pittsburgh, and Port Columbus (E.T.).

Table 17-A Boston—Atlantic City—Atlanta

Table with columns for Southbound READ DOWN, Northbound READ UP, American Airways, and Eastern Air Transport. Lists departure and arrival times for routes including Boston (E.T.), Hartford, Newark (E.T.), Newark (E.T.), Atlantic City, Philadelphia, Baltimore, Washington, Richmond, Norfolk, Greensboro (E.T.), and Atlanta (C.T.).

Table 18 Boston—New York—St. Louis—New Orleans—Houston—Galveston

Table with columns for South and Westbound READ DOWN, North and Eastbound READ UP, American Airways, N.Y.C. Train 11, N.Y.C. Train 12, Penn. R.R. Train 65, and American Airways. Lists departure and arrival times for routes including Boston (E.T.), Hartford, Newark (E.T.), Springfield (E.T.), New York, Albany, Utica, Syracuse, Rochester, Buffalo, Cleveland, Newark, Washington, Baltimore, No. Philadelphia, Harrisburg, Pittsburgh, and Port Columbus (E.T.).

Table 19 Boston—Washington

Table with columns for Eastern Time, Southbound—READ DOWN, and Northbound—READ DOWN. Lists departure and arrival times for routes including Boston, Hartford, Newark, Washington, Baltimore, and Newark.



AMERICAN AIRWAYS

Planes scheduled to fly 32,942 miles daily



Table 20 Boston—New York—Dallas—Houston San Antonio—Mexico City

Table with columns for South and Westbound READ DOWN, North and Eastbound READ UP, American Airways, N.Y.C. Train 11, N.Y.C. Train 12, Penn. R.R. Train 65, American Airways, and American Airways. Lists departure and arrival times for routes including Boston (E.T.), Hartford, Newark (E.T.), Springfield (E.T.), New York, Albany, Utica, Syracuse, Rochester, Buffalo, Cleveland, Newark, Washington, Baltimore, No. Philadelphia, Harrisburg, Pittsburgh, and Port Columbus (E.T.).

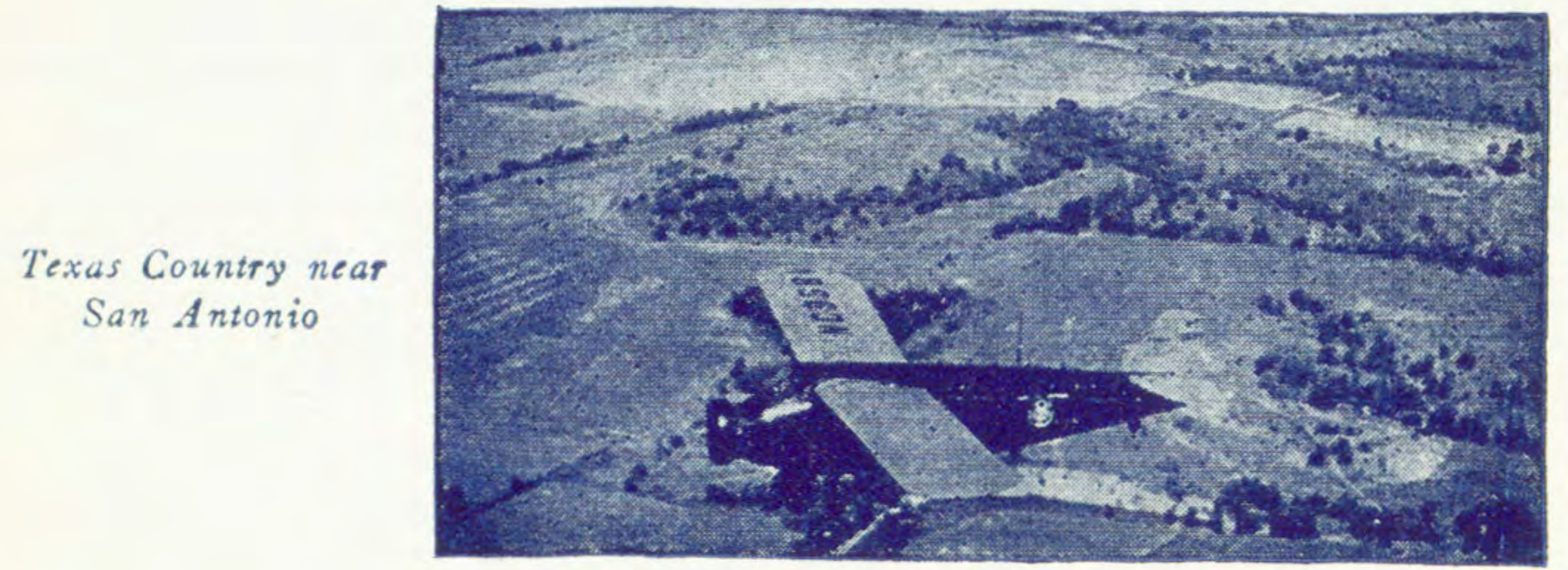
b—Daily except Sunday
d—Daily except Sunday and Monday
F—N. Y., N. H. & H. R. R. train No. 78 to Springfield daily except Saturday and Sunday; leaves Hartford 1:45 pm Saturday and Sunday
H—Flag Stop
p—Overnight Hotel Stop
r—Pennsylvania Rail connection made at Columbus
s—Port Columbus Station
S—Daily except Sunday; on Sunday leaves Boston 12:15 pm
t—Rail connection to Atlanta made at Cincinnati

Table 21 Boston—Cleveland—Chicago—Louisville Atlanta

Table with columns for Westbound READ DOWN, American Airways, Eastbound READ UP, and American Airways. Lists departure and arrival times for routes including Boston (E.T.), Hartford, Newark (E.T.), Cleveland (E.T.), Akron, Columbus, Dayton, Cincinnati (E.T.), and Louisville (C.T.).



American Airways Ticket Office



Texas Country near San Antonio

