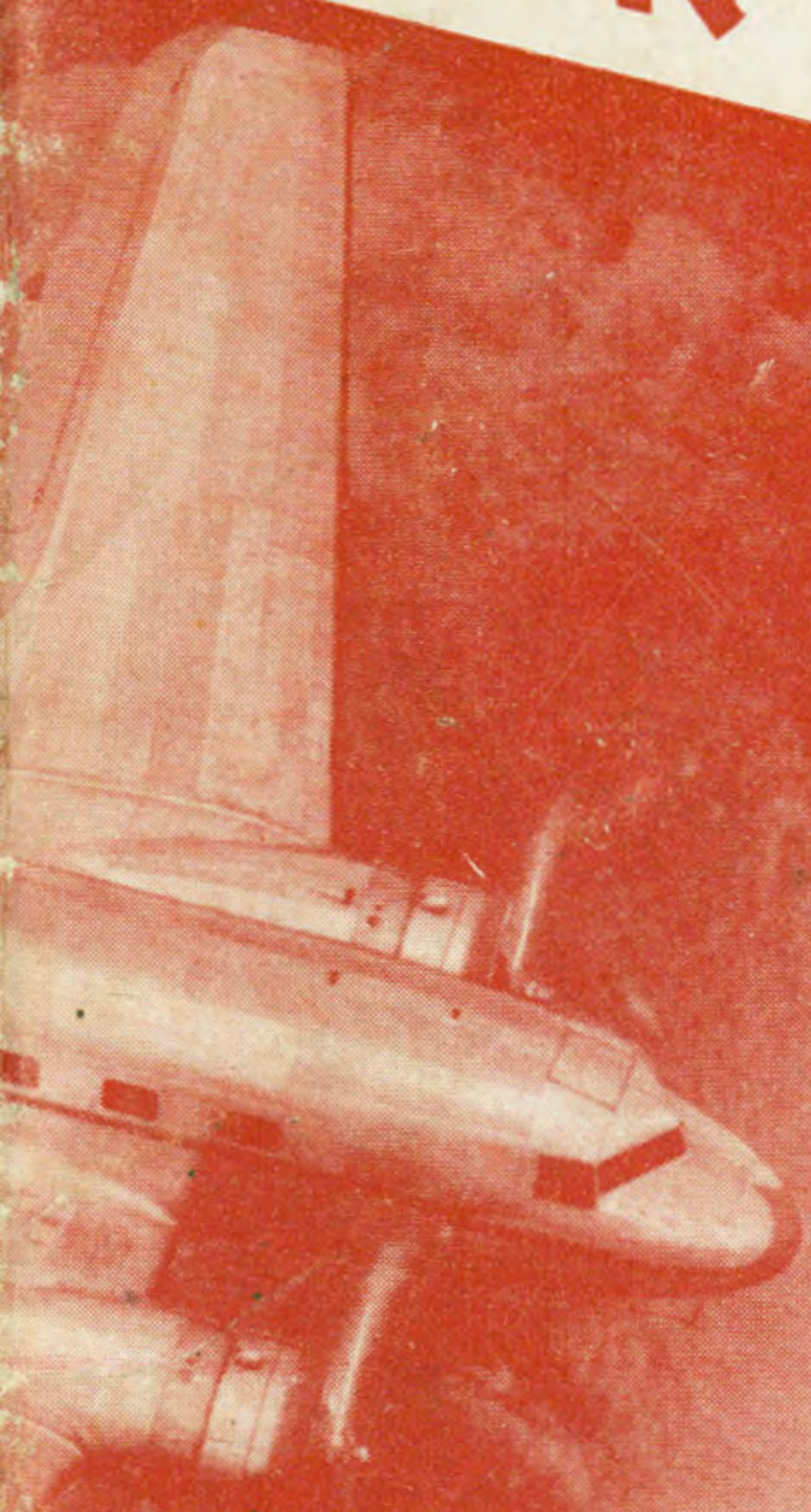


ONLY TRANSCONTINENTAL LINE WITH SLEEPER PLANES



**AMERICAN  
AIRLINES**



1935



**INAUGURATING**

ONLY TRANSCONTINENTAL LINE WITH SLEEPER PLANES



**AMERICAN  
AIRLINES**

**AMERICAN AIRLINES**



1935

★ INAUGURATING NIAGARA SCENIC SERVICE

★ ★ ★ ★ ★ ★ ★

★ ★

**A**merican Airlines this month inaugurates a new Niagara Scenic flight — twice a day — to be made by two regularly scheduled American Condor Airliners between Chicago, Detroit, Buffalo, New York. ★

On your next trip between these cities, plan to view the whole grand Falls picture in comfort from the Air . . . No extra effort, no extra cost.

See schedule on page 6

★ ★

★  
BETWEEN CHICAGO AND NEW YORK

★  
A NEW EXCELLENCE  
IN AIR SERVICE

★  
INVITES YOU TO TRAVEL AMERICAN...

★ American Airlines between Chicago and New York, via Detroit and Buffalo, offers you a new excellence in air service, new travel luxuries, to add to the pleasure of your trip.

In the air, enjoy fast, new Douglas 14-passenger Airliners, giant 15-place Curtiss Condors, with commo-

### Five Round-Trip Flights Daily, including:

#### "THE NIAGARA"

Once each day, each way, this new Chicago-New York flight passes directly over Niagara Falls, affording passengers the only complete view of this great American Scenic Wonder... at no extra cost, no extra trouble.

#### "THE NEW YORKER"

Detroit-New York Non-Stop service in 2 hours, 40 minutes!—a high speed Douglas schedule, leaving Chicago at close of day, Detroit after dinner, arriving in New York at 10:20 p.m., E.S.T., allowing time for a full night's rest.



ONLY DOUGLAS AIRLINER

dious, sound-proofed cabins, large reclining club chairs (reversible in the Douglas). Constant Stewardess service. Excellent club meals served aloft...

Comfortable Limousines make rapid connections between points in the business district and the airport. Company Ticket Offices in all four cities are ready to serve your needs at all times.

#### "THE CHICAGOAN"

A fast Douglas Service from New York at 5:30 p.m., E.S.T., stopping at Buffalo en route—arriving in Detroit after dinner, then taking less than two hours to Chicago. Remember—only American offers Douglas service with stewardess.

#### "THE NIGHT OWL"

Douglas night-flight, with departure after midnight from both cities, is the only late night Douglas service available. It allows a full evening for dinner and theater, with arrival before breakfast in New York and Chicago.

SERVICE WITH STEWARDESS

## BETWEEN CHICAGO AND WASHINGTON AMERICAN OFFERS THE ONLY *THROUGH* SERVICE

★ Between Chicago and Washington, cruise at 170 miles per hour in a luxurious, sound-proofed Condor, secure in reclining seats, comfortable as a club lounge chair. And, at meal time, enjoy an excellent club luncheon aloft.

All without worry about changing planes or making connections—for this bother is eliminated if you fly the American way—the only *through* way.

En route, stops are made at Indianapolis, Cincinnati, Charleston and Elkins, W. Va.

### WASHINGTON - CHICAGO

Condor leaves Washington after luncheon, stops in Elkins, W. Va., at 2:48 P. M., (EST.), with arrival at Charleston an hour later. Thence to Cincinnati at 5:23 P. M., to Indianapolis 58 minutes later, Chicago at the dinner hour (6:55 P.M., CST.) in ample time to make full preparation for the evening.

### CHICAGO - WASHINGTON

Departure before luncheon from Chicago. Indianapolis an hour later. ... Luncheon aloft ... Arrival at Cincinnati at 2:39 (EST.), Charleston at 4:00, Elkins 4:58. Arrival in Washington a few minutes after six o'clock ... in plenty of time for an early dinner and evening engagements.



### CHICAGO - CINCINNATI

In addition to the regular Chicago—Cincinnati—Washington Service, American Airlines flies one Vultee round-trip schedule daily between Chicago, Indianapolis and Cincinnati. On this World's Fastest transport plane, it is possible to make the trip in one hour, and fifty two minutes.





★ CONDENSED

SCHEDULES



**AMERICAN AIRLINES**

American Airlines  
Other Air Lines

## CONDENSED FARE TABLE

CHICAGO to:		O.W.	R.T.	DALLAS and FT. WORTH to:		O.W.	R.T.	NEW YORK to:		O.W.	R.T.	
Boston		\$ 54.21	\$ 97.58	St. Louis		38.00	68.40	Boston		13.90	25.02	
Cincinnati		16.00	28.80	Tulsa		17.00	30.60	Buffalo		21.95	39.51	
Detroit		13.25	23.85	Washington		77.31	139.16	Chicago		47.95	86.31	
St. Louis		13.95	25.11	<b>LOS ANGELES to:</b>		Chicago	115.00	207.00	Cincinnati		38.84	68.21
San Diego		115.00	207.00	Dallas		85.39	153.71	Detroit		34.70	62.46	
San Francisco		115.00	207.00	Detroit		128.25	230.85	San Diego		160.00	288.00	
Washington		37.95	68.31	Ft. Worth		83.49	150.29	San Francisco		160.00	288.00	
<b>DALLAS and FT. WORTH to:</b>		Chicago	51.95	93.51	New York		160.00	288.00	Washington		26.85	46.62
Chicago		70.45	126.81	Philadelphia		160.00	288.00	Cincinnati		25.89	46.61	
Cleveland		90.26	160.76	Washington		152.00	273.60	New York		12.95	21.60	

## GENERAL INFORMATION

**ANIMALS**—Live animals and reptiles will not be accepted for transportation over the lines of the Company under any condition.

**BAGGAGE**—Thirty-five (35) pounds of baggage will be carried free on any ticket. Excess baggage carried upon special arrangements and shall be at the rate per pound of one-half of one per cent, of the published air passenger fare, with a minimum charge of twenty-five cents, and the liability of the Carrier for loss of or damage to baggage and/or personal property is limited to the amount of One Hundred Dollars (\$100.00) unless a higher valuation be declared and an additional charge paid therefor. Excess valuation limited to \$1000.00 on each full fare ticket.

**CHILDREN**—Children under two years of age, when held in arms of parent or guardian, carried free. Children over two years of age will be charged full fare.

**COMFORT FACILITIES**—Comfort facilities are available on all American Airlines passenger planes and at all airports.

**COMPLAINTS**—Complaints, or suggestions for the betterment of the service, should be addressed to the General Traffic Manager, American Airlines, Inc., 4848 West Sixty-third St., Chicago, Ill.

**INSURANCE**—Trip insurance is available at most airports.

**PASSAGE, CANCELLATION BY COMPANY**—The company reserves the right to cancel bookings before passage or en route. Pilot may remove passengers from plane at any point on the route for safety or other cause. In all events the passenger's sole recourse shall be recovery of that portion of the fare equal to the distance untraveled.

**PASSAGE, CANCELLATION BY PASSENGER**—The Purchaser may receive a refund for passage if cancelled two hours prior to flight.

**PASSAGE, REFUSAL OF**—The person in charge at any point of departure or the Pilot may refuse to carry any holder of a ticket, whenever he believes the proposed passenger is suffering from permanent or temporary disability, which wholly in the discretion of such Manager or Pilot, might jeopardize the safety of such passenger or the plane. In any such case the passenger shall be entitled to the return of the price of the ticket but no other damages.

**REFUNDS**—Requests for refunds on tickets should be addressed to the Auditor of Ticket Accounts, American Airlines, Inc., 4848 West Sixty-third St., Chicago, Ill.

**RESERVATIONS**—All space is reserved though no definite seat assignments are made. Reservations will not be made except upon payment of fare.

**ROUND-TRIP FARES**—10% reduction on all round-trip tickets if purchased before start of original trip. Return trip must be started within sixty days.

**STOP-OVER**—Ten (10) day stop-over will be allowed at any regular stop provided reservation is made accordingly.

**TIME TABLES**—These time-tables show the times at which planes may be expected to depart from and arrive at the several stations shown, and to connect with trains or other planes, but their departure, arrival, or connection at the time stated is not guaranteed. American Airlines reserves the right to vary from the time shown in this folder without notice to the public.

**WEARING APPAREL**—Cabins of American Airlines planes are comfortably heated and ventilated. Wear regular apparel regardless of season.

## NEW YORK—CHICAGO

WESTBOUND						EASTBOUND					
Daily Service	No. 9	The Niagara	No. 3	The Chicagoan	The Night-Owl	Daily Service	No. 10	The Niagara	No. 2	The New Yorker	The Night-Owl
New York (E.T.) Lv	8.00 AM	12.35 PM	3.00 PM	5.30 PM	1.00 AM	Chicago... (C.T.) Lv	8.00 AM	12.30 PM	2.00 PM	5.00 PM	12.30 AM
Buffalo... Lv	10.10 AM	3.11 PM	.....	7.40 PM	3.10 AM	Detroit... (E.T.) Lv	10.36 AM	3.48 PM	4.36 PM	7.40 PM	3.06 AM
Detroit... Ar	11.40 AM	5.14 PM	6.26 PM	9.10 PM	4.40 AM	Buffalo... Ar	11.54 AM	5.27 PM	5.54 PM	.....	4.24 AM
Chicago... (C.T.) Ar	12.30 PM	6.49 PM	7.20 PM	10.00 PM	5.30 AM	New York... Ar	1.40 PM	7.36 PM	7.40 PM	10.20 PM	6.10 AM

## SOUTHERN TRANSCONTINENTAL

WESTBOUND				EASTBOUND			
Daily Service	The Southerner	No. 3	No. 3	Daily Service	No. 4	No. 4	The Southerner
Boston... (E.T.) Lv	10.00 AM	.....	5.00 PM	Los Angeles... (P.T.) Lv	10.00 AM	10.00 AM	7.00 PM
New York... Lv	12.05 PM	5.00 PM	7.30 PM	Ft. Worth... (C.T.) Lv	8.55 PM	8.55 PM	8.10 AM
Philadelphia... Lv	12.49 PM	.....	.....	Dallas... Lv	9.20 PM	9.20 PM	8.33 AM
Washington... Lv	2.00 PM	.....	.....	Columbus... (E.T.) Ar	6.48 AM	6.48 AM	.....
Cleveland... Lv	.....	.....	10.30 PM	Cleveland... Ar	.....	7.49 AM	.....
Columbus... Lv	.....	11.31 PM	11.31 PM	Washington... Ar	.....	.....	5.13 PM
Dallas... (C.T.) Ar	9.34 PM	7.39 AM	7.39 AM	Philadelphia... Ar	.....	.....	6.20 PM
Ft. Worth... Ar	9.57 PM	8.04 AM	8.04 AM	New York... Ar	10.28 AM	10.47 AM	6.59 PM
Los Angeles... (P.T.) Ar	7.36 AM	3.53 PM	3.53 PM	Boston... Ar	12.39 PM	12.39 PM	8.54 PM

†—Leaves Boston at 7.00 am on Sunday and holidays.  
†—Arrives Boston 7.09 pm on Sunday and holidays.

## NEW YORK—SOUTH TEXAS

Read Down		Daily Service				Read Up	
AM	PM	PM	AM	AM	AM	AM	
1.00	5.00	7.30	Lv New York... (E.T.) Ar	10.28	10.47	6.10	
.....	.....	6.00	Lv Washington... Ar	10.40	10.40	.....	
.....	.....	10.30	Lv Cleveland... Ar	.....	7.49	.....	
.....	.....	11.31	Lv Columbus... Ar	6.48	6.48	.....	
2.59	7.39	7.39	Ar Dallas... (C.T.) Lv	9.20	9.20	12.29	
.....	.....	10.00	Ar Houston... Lv	5.30	5.30	10.30	
.....	9.40	9.40	Ar Austin... Lv	4.15	4.15	.....	
.....	10.30	10.30	Ar San Antonio... Lv	3.25	3.25	.....	
.....	12.15	12.15	Ar Brownsville... Lv	1.55	1.55	.....	
PM	PM	PM		PM	PM	AM	

## NEW YORK—ST. LOUIS

Read Down		Daily Service				Read Up	
AM	AM	PM	PM	PM	AM		
8.00	1.00	Lv New York... (E.T.) Ar	7.36	7.40	10.20	6.10	
10.10	3.10	Lv Buffalo... Ar	5.27	5.54	.....	4.24	
11.48	4.48	Lv Detroit... Ar	3.36	4.23	7.28	10.36	
1.00	8.00	Lv Chicago... (C.T.) Ar	11.04	1.30	4.29	7.04	
2.32	9.57	Ar St. Louis... Lv	9.00	12.01	3.00	5.00	
PM	AM		AM	PM	PM	PM	

★ See pages 6 and 7 for Complete Schedules.



CORRECTED TO APRIL 28, 1935  
SUBJECT TO CHANGE WITHOUT NOTICE

ALL TIMES STANDARD. WHERE DAYLIGHT  
SAVING TIME IS IN EFFECT ADD ONE HOUR

SOUTHERN TRANSCONTINENTAL SERVICE

WESTBOUND—READ DOWN

Table 1: Southern Transcontinental Service Westbound. Columns include Mls., Table 1, No. 1, The Southerner Daily, No. 3, and No. 2. Cities listed include Boston, New York, Philadelphia, Washington, Cleveland, Columbus, Cincinnati, Louisville, Nashville, Memphis, Little Rock, Dallas, Ft. Worth, Abilene, Big Spring, El Paso, Douglas, Tucson, Phoenix, Los Angeles, San Diego, and San Francisco.

EASTBOUND—READ DOWN

Table 2: Southern Transcontinental Service Eastbound. Columns include Mls., Table 2, No. 4, The Southerner Daily, No. 2, and No. 1. Cities listed include San Francisco, San Diego, Los Angeles, Phoenix, Tucson, Douglas, El Paso, Big Spring, Abilene, Ft. Worth, Dallas, Memphis, Nashville, Louisville, Cincinnati, Columbus, Cleveland, Washington, Philadelphia, New York, and Boston.

BOSTON — NEW YORK — WASHINGTON

SOUTHBOUND—READ DOWN

Table 5: Boston - New York - Washington Southbound. Columns include Mls., Table 5, Equipment: Condors, The Early Bird Daily, No. 9, No. 11, No. 1, No. 3, and No. 5. Cities listed include Boston, Springfield, Hartford, New Haven, New York, and Washington.

NORTHBOUND—READ DOWN

Table 6: Boston - New York - Washington Northbound. Columns include Mls., Table 6, Equipment: Condors, The Early Bird Daily, No. 4, No. 8, No. 10, No. 12, and No. 6. Cities listed include Washington, New York, New Haven, Hartford, Springfield, and Boston.

CHICAGO — ST. LOUIS — TEXAS — LOS ANGELES

SOUTH and WESTBOUND—READ DOWN

Table 7: Chicago - St. Louis - Texas - Los Angeles South and Westbound. Columns include Mls., Table 7, No. 5 Daily, No. 7 Daily, No. 1 Daily, No. 9 Daily, and No. 3 Daily. Cities listed include Chicago, Peoria, Springfield, St. Louis, E. St. Louis, Tulsa, Oklahoma City, Dallas, Ft. Worth, Houston, Dallas, Ft. Worth, Abilene, Big Spring, El Paso, Douglas, Tucson, Phoenix, Los Angeles, and Chicago.

EAST and NORTHBOUND—READ DOWN

Table 8: Chicago - St. Louis - Texas - Los Angeles East and Northbound. Columns include Mls., Table 8, No. 6 Daily, No. 2 Daily, No. 8 Daily, No. 4 Daily, and No. 10 Daily. Cities listed include Los Angeles, Phoenix, Tucson, Douglas, El Paso, Big Spring, Abilene, Ft. Worth, Dallas, Houston, Dallas, Ft. Worth, Oklahoma City, Tulsa, Springfield, St. Louis, E. St. Louis, Springfield, Peoria, Los Angeles, and Chicago.

Equipment—Chicago-St. Louis-Ft. Worth-Houston Vultees.  
NOTE—Stewardess service on trip 1 between Dallas and Los Angeles.

NEW YORK — BUFFALO — DETROIT — CHICAGO

WESTBOUND—READ DOWN

Table 3: New York - Buffalo - Detroit - Chicago Westbound. Columns include Mls., Table 3, Michigan Flyer, No. 9, No. 11, The Niagara Daily, No. 3, No. 23, The Chicagoan Daily, and The Night-Owl Daily. Cities listed include New York, Scranton, Elmira-Corning, Buffalo, Detroit, Ann Arbor, Jackson, Battle Creek, Kalamazoo, South Bend, and Chicago.

EASTBOUND—READ DOWN

Table 4: New York - Buffalo - Detroit - Chicago Eastbound. Columns include Mls., Table 4, No. 24, No. 10, The Niagara Daily, No. 2, Michigan Flyer, The New Yorker Daily, No. 14, and The Night-Owl Daily. Cities listed include Chicago, South Bend, Kalamazoo, Battle Creek, Jackson, Ann Arbor, Detroit, Buffalo, Elmira-Corning, Scranton, and New York.

Equipment—Michigan Flyer, Stinson A; trips 23 and 24 Stinson U; The Niagara, trips 11 and 14 Condon; The Chicagoan, The New Yorker, The Night-Owl, trips 2, 3, 9 and 10 Douglas. NOTE—Stewardess service on all trips except Michigan Flyer, trips 23 and 24.

REFERENCE NOTES

- †—Daily except Sunday and holidays. †—Daily except Saturday, Sunday and holidays.
⊗—Complimentary meal aloft.
⊙—Operates via Niagara Falls.
●—United Air Lines trip 23 between New York and Cleveland.
■—United Air Lines trip 15 between New York and Cleveland.
⊕—United Air Lines trip 6 between Cleveland and New York.
⊖—United Air Lines trip 10 between Cleveland and New York.
△—Stops to discharge passengers from Tucson and points west, and to pick up passengers holding reservations to Memphis or Tulsa and beyond.
♠—Meal stop.
x—Stops to pick up or discharge passengers holding reservations.

BOSTON — ALBANY — CLEVELAND  
NEW YORK — ALBANY — MONTREAL

Table 9: Boston - Albany - Cleveland - New York - Albany - Montreal. Columns include READ DOWN, Mls., TABLE 9, and READ UP. Cities listed include Boston, Springfield, Albany, New York (Newark), Albany, Montreal, Albany, Utica, Syracuse, Rochester, Buffalo, and Cleveland.

Equipment—New York-Albany U-Stinsons; Albany-Montreal Vultees; trips 3 and 4 Boston-Cleveland U-Stinsons.

CHICAGO — CINCINNATI — WASHINGTON

Table 10: Chicago - Cincinnati - Washington. Columns include READ DOWN, Mls., TABLE 10, and READ UP. Cities listed include Chicago, Indianapolis, Cincinnati, Charleston, Elkins, Washington, D.C., and Chicago.

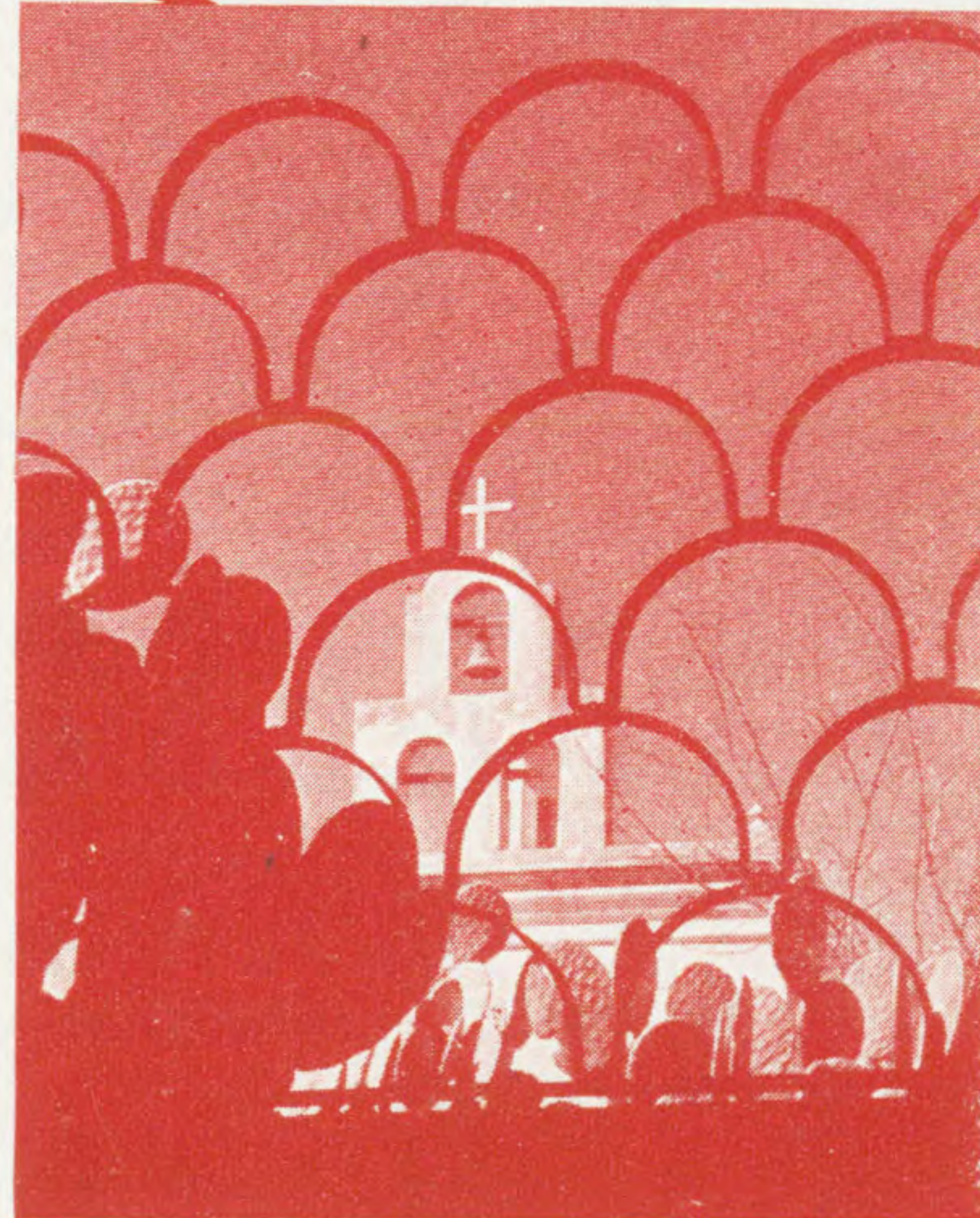
Equipment—Trips 1 and 2 Condors; trips 3 and 4 Vultees.

REFERENCE NOTES

- †—Daily except Sunday and holidays.
⊗—Complimentary meal aloft.
△—Stops to discharge passengers from Tucson and points west, and to pick up passengers holding reservations to Memphis or Tulsa and beyond.
♠—Meal stop.
⊕—No local passengers or express carried between Hartford and New Haven.
⊖—No through passengers holding reservations to or from Springfield, Ill. and beyond.
⊙—Southbound trip Montreal-New York operated by Canadian Colonial Airways, Ltd.
w—Stops to discharge passengers from Dallas and beyond.
x—Stops to pick up or discharge passengers holding reservations.
z—Stops to pick up passengers holding reservations to Dallas and beyond.
B.A.L.—Bowen Air Lines.



BETWEEN BOSTON, NEW YORK, WASHINGTON AND  
LOS ANGELES... **FLY THE SOUTHERN  
TRANSCONTINENTAL**... FAIR WEATHER ROUTE  
TO FAIR WEATHER LAND... ABOVE THE HEAT AND DUST...



★ When next you're traveling  
across the nation, use The Most Luxurious Air Service in America  
—American's **Southern Transcontinental**.

This outstanding East-West air route links Boston, New York and Washington to Los Angeles by way of Tennessee, Arkansas, Texas, and Arizona . . . admirably serves the whole East and Central West with fast connecting Vultees and Condors . . . admirably serves you with day-flight Douglas Airliners, night-flight convertible Condor Sleeper Planes (exclusive with American). Departures twice daily from East and West . . . day and night.

**ONLY AMERICAN AIRLINES' SOUTHERN TRANSCONTINENTAL OFFERS THESE LUXURIES**

**CONVERTIBLE SLEEPER PLANES**

Giant Condors, on the night-flight, provide 12 comfortable, oversize berths . . . real beds . . . built for sleep . . . and ventilated with clean, mountain-cool air; in summer, a double blessing!

**STEWARDESS SERVICE IN DOUGLAS AIRLINERS**

American Airlines provides the convenience of stewardess service in both the Condor Sleeper and the Eastern Section 14-passenger Douglas Airliners. Someone always on hand to satisfy your needs, serve meals, answer questions.

To suit your convenience — three main services on the Southern Transcontinental to the Southwest and Pacific Coast:

ONE:—Departure from Boston via New York, Philadelphia, Washington, Nashville.

TWO:—Departure from Boston via New York, Cleveland, Columbus, Cincinnati, and Louisville.

THREE:—Departure from New York via Buffalo, Detroit, Chicago, St. Louis, Tulsa, Oklahoma City.

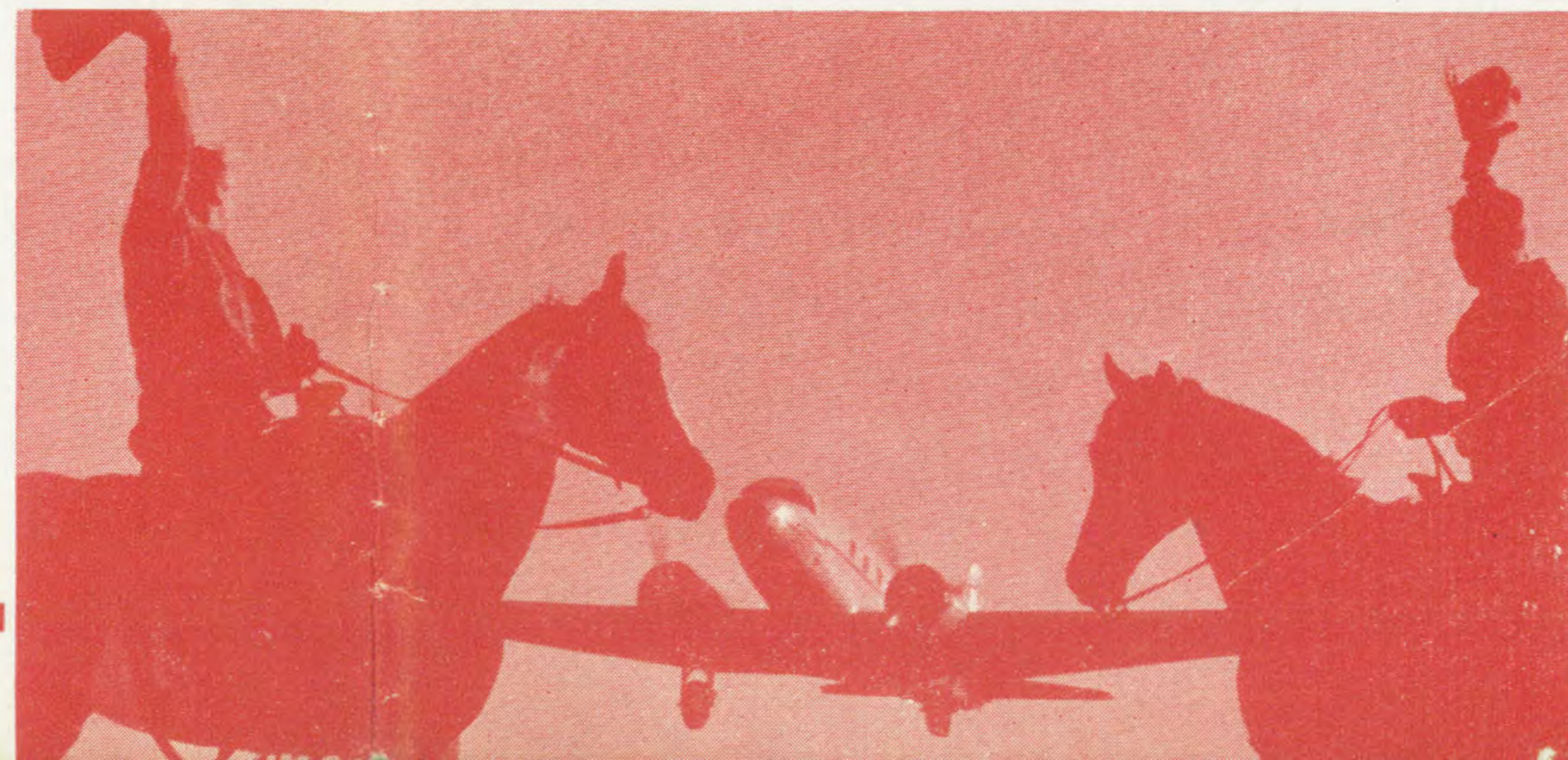
See schedules page 5 or page 6.

**TRANSCONTINENTAL SERVICE FROM WASHINGTON**

Only American Airlines provides through transcontinental service from Washington to Pacific Coast.

**EXPRESS STOP BORDERING MEXICO**

At El Paso, Texas, the Southern Transcontinental touches a border port of Old Mexico, Juarez . . . with its typical color and flavor of our Spanish South.



Photos  
Thos.  
McAvoy

**THERE'S GOING TO BE A FAIR!**

**WHERE:** SAN DIEGO, SOUTHERN CALIFORNIA. **WHEN:** MAY 29th TO NOVEMBER 11th. **WHY:** BECAUSE IT'S A PERFECT SPOT FOR AN OUTDOOR SHOW—AND CONFIDENT EXHIBITORS ARE SPENDING \$20,000,000 TO PROVE IT TO US. **HOW:** HOW TO GET THERE? AMERICAN AIRLINES SOUTHERN TRANSCONTINENTAL! FAIR WEATHER ROUTE TO FAIR WEATHER LAND—ABOVE THE HEAT AND DUST.

★ **LATE FAIR FLASHES FROM SAN DIEGO:**

"The Exposition is rising like a polished jewel in a lovely setting — famed Balboa Park — 1,400 acres of forest and flowers in the heart of the city."

"San Diego weather promises to be unusually cool and pleasant this summer."

"Hotel and apartment accommodations for 50,000 visitors."

"Restless visitors should know that it's only a short jaunt from San Diego to Tia Juana and Agua Caliente, playgrounds of Old Mexico."

"More than one hundred buildings have been constructed to house exhibits from the Old World and the New. Here will be everything progressive and modern, glorified by gorgeous coloring and brilliant illumination."

"San Diego offers many splendid vistas. An eye for beauty meets color everywhere—azure

Pacific blue of the magnificent bay, mountain blue southward in Old Mexico, eastward in the Cuyamacas. Verdure, flowering plants, sun, air, all combine to stir the senses."

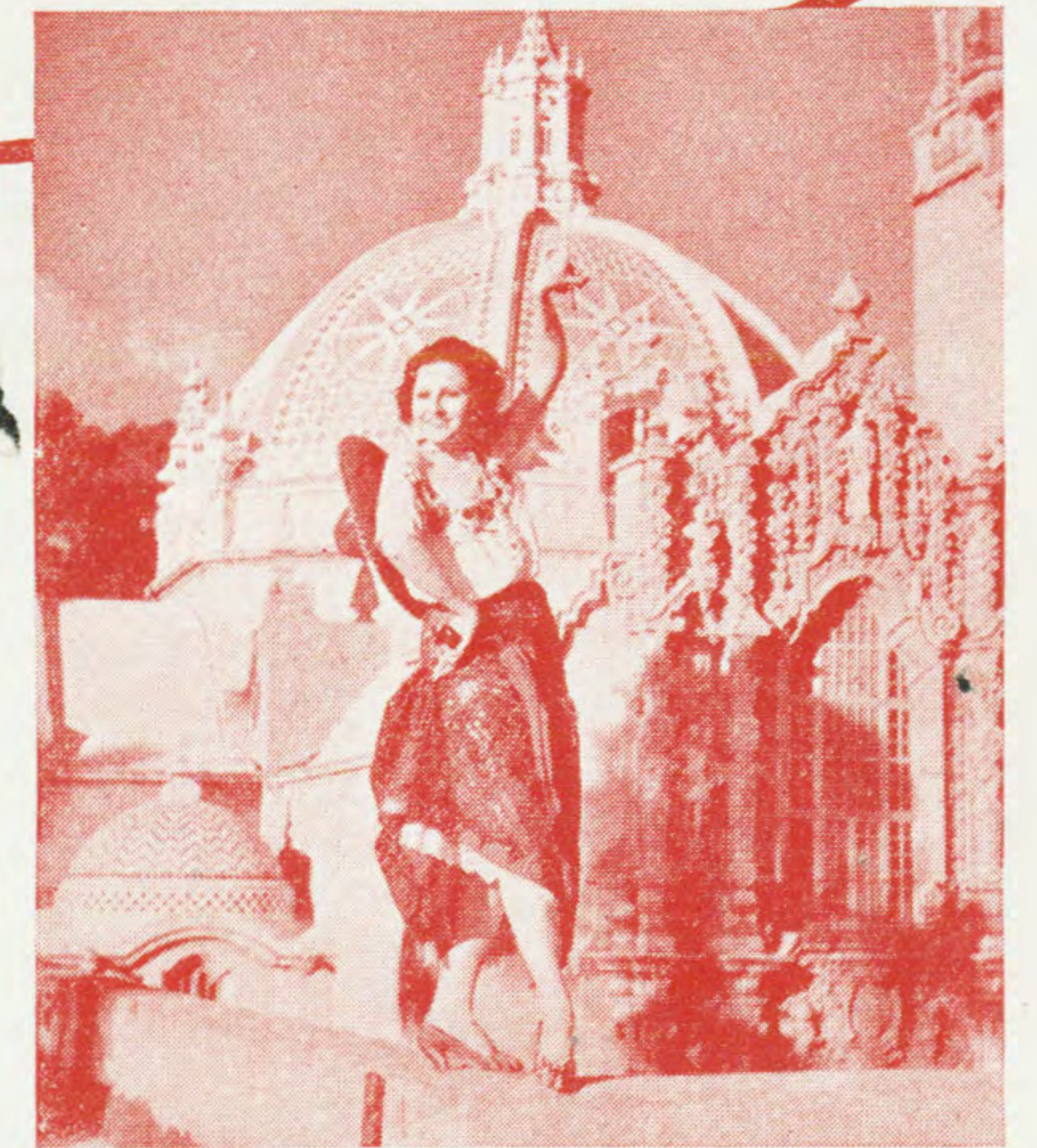
"In our Exposition Palace of Natural History are 397,088 subjects from all parts of earth."

"Special Flash: President Roosevelt plans to attend!"

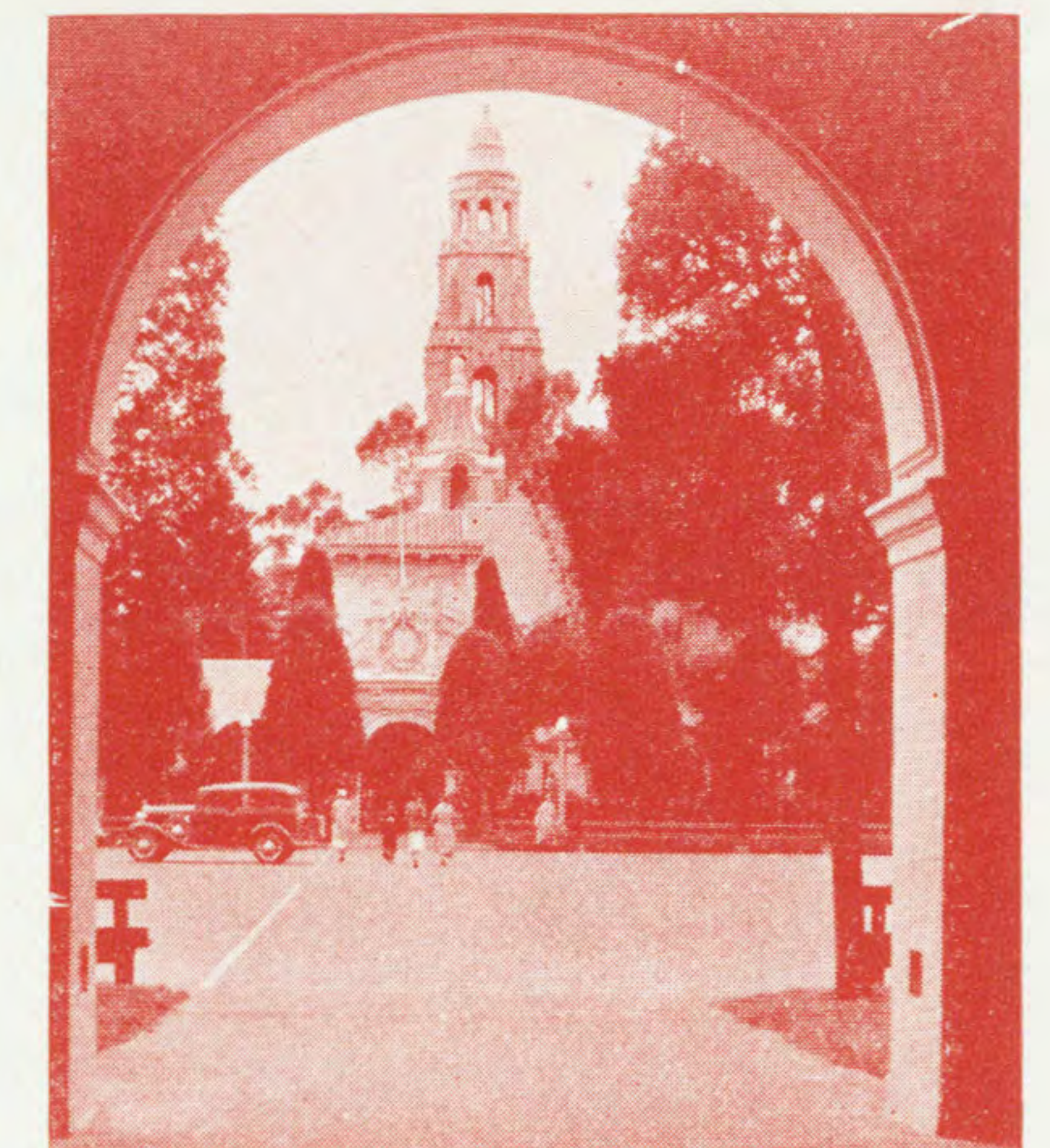
"Gigantic Naval Review to honor President! 400 men-of-war in mammoth review . . . air forces of the nation on display . . . mock air battles, sea fights."

"At the Exposition will be a Midway Mile of Amusements. Everything funny, astounding, unusual, gay, in the way of entertainment."

"See 25 acres of garden loveliness, famous outdoor music amphitheatre, international sports contests and reception for visiting celebrities and dignitaries."



*Dancing Senorita of San Diego.*



*A Tower suggesting Spain and Morocco . . . architectural gem on the Exposition Grounds.*

*San Diego—beautiful city in a beautiful land.*

