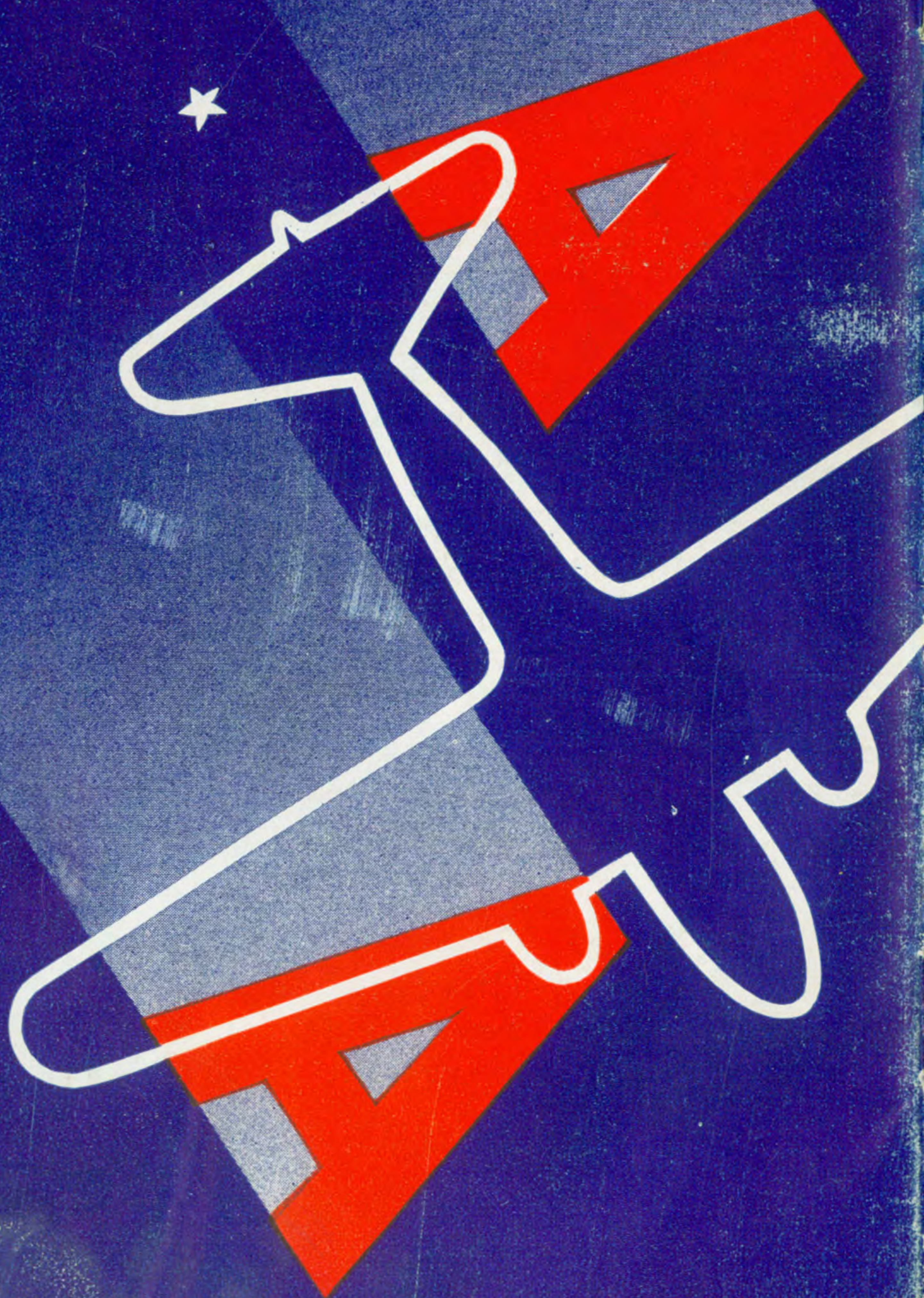


American Airlines

INC.



American Airlines

INC.

American Airlines

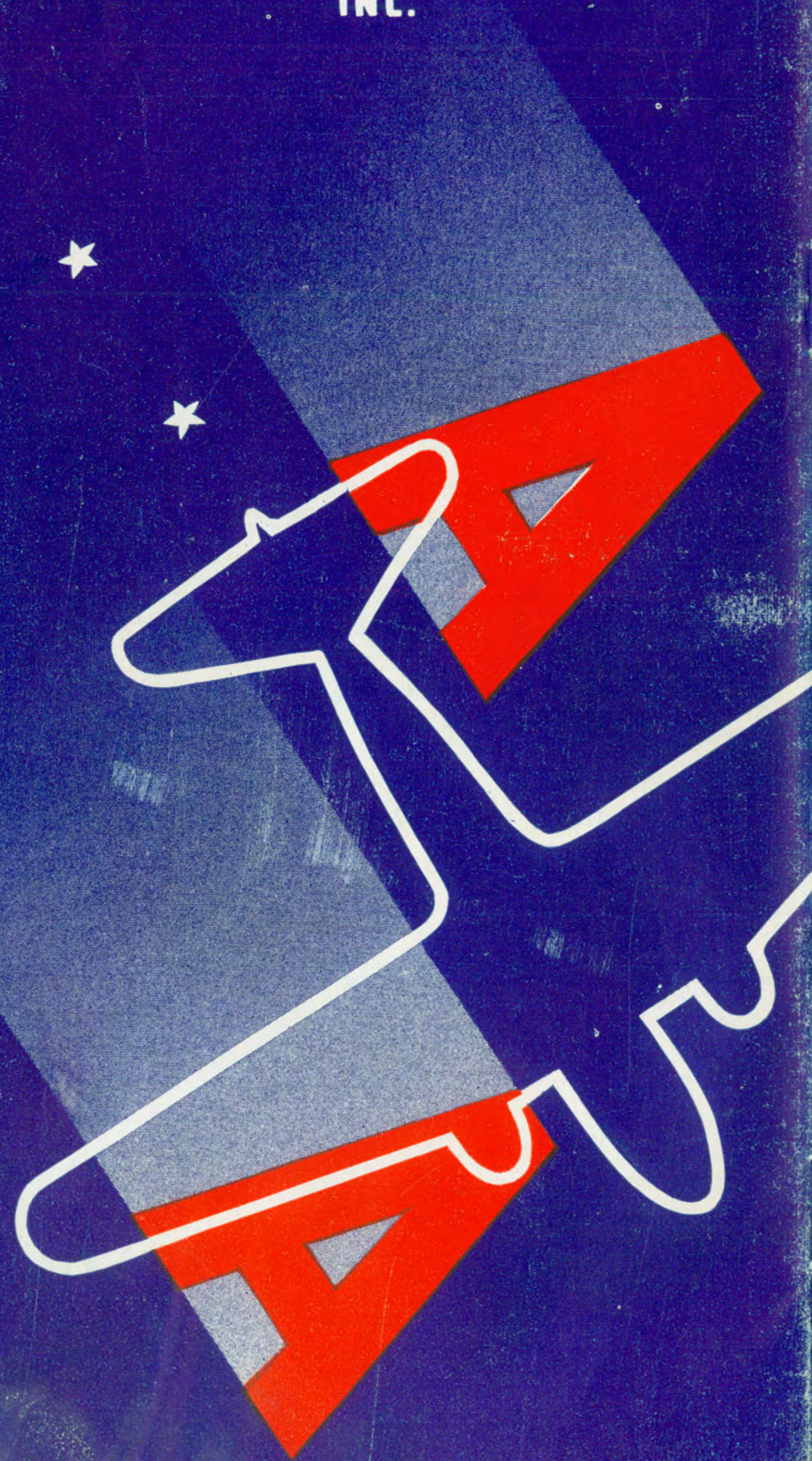
INC.

★ **THIS MONTH** ★

American Airlines announces

- ✓ 6 All-Douglas Round Trips daily between Chicago-New York: Fastest time 4 hours, 20 minutes eastbound. 2 non-stop trips Detroit-New York: 2 hours, 40 minutes eastbound.
- ✓ 8 Round Trips daily between New York-Boston: 5 non-stop, fastest time 87 minutes northbound.
- ✓ 5 Round Trips daily Chicago-St. Louis: Fastest time 89 minutes northbound.

★ **SEE SCHEDULES, PAGES 5-6-7** ★



WHAT IT MEANS TO YOU TO FLY WITH THE

★ Largest ★ AIRLINE IN THE UNITED STATES

★ Latest planes . . . greatest coverage . . . ? Yes! . . . but most of all it means that you are flying with a company whose size and 9 years of experience has developed in its Personnel a definite sense of public responsibility, even in the smallest essentials, the extra unexpected services which all of us so much appreciate

You will find the most modern flying equipment in **American Airlines** great air fleets. Several years ago **American** developed a policy of suiting the plane to the job for which it was needed . . . now has in active service fleets of the following ships . . . (all equipped with modern safety devices, two-way radio . . . sound-proofed and insulated)

American Airlines pilots: Alert, experienced, fit. Flying experience: 500,000 to 1,500,000 miles per man.



A Douglas Airliner undergoing the regular inspection. All functions are checked by skilled mechanics.

On **American Airlines**, you may expect, from reservations man to stewardess, a never-failing friendly courtesy which has its source in a liking for the work and the company . . . and in the employee's own character.

American Airlines offers you a Pilot personnel trained and experienced beyond requirements, rigidly examined at regular intervals for fitness to serve its monthly thousands of passengers. **American** stewardesses are selected for their tact, charm, willingness to serve . . . are all trained nurses.

You may expect many different schedules, more service to more parts of the country. **American Airlines** flies 6,850 route miles, in 22 states . . . offers you direct service to 57 principal American cities.



Southern Hospitality! . . . Typical of American Airlines high regard for passenger comfort is the delicious Southern Fried Chicken Dinner served (compliments of the Company) during evening meal hours aloft.

Douglas Airliners: Luxurious, 14-passenger, all metal twin-motored planes. These Douglases comprise the major American air fleet.

Vultee Transports: The fastest transport plane in the world: Cruising speed, 215 miles per hour!

Curtiss Condor: Great, convertible Sleeper Planes, and day planes.

From **American Airlines**, you may expect advanced thought in everything concerning your safety, convenience . . . and comfort. To illustrate especially the last point: the only Sleeper Planes in the world today are flown by American Airlines . . . whose engineers, working closely with the Curtiss-Wright Company, helped develop the Condor Sleeper . . . And the only line with stewardess service on Douglas Airliners is **American**.

THE MOST FREQUENT *DOUGLAS SERVICE*

CHICAGO • NEW YORK

Six Round-Trips Daily

Fastest Time: 4 hours, 20 minutes Eastbound

★ American Airlines this month announces, (with pride in the passenger confidence which makes it necessary) an increase in its ALL-DOUGLAS service between Chicago and New York to **6** round trips a day.

CHICAGOANS...NEW YORKERS...

FOUR of these luxurious Douglas flights call at Detroit and Buffalo . . . Including:

"The NIAGARA", which daily affords passengers a splendid scenic view of the Falls . . .

"The NIGHT OWL", Douglas night flight with after-midnight departures from both terminals . . . the only late night Douglas service. Allows a full evening for dinner and theatre with arrival before breakfast in New York and Chicago.

DETROITERS: NOTE...

The other TWO of these fast Douglas schedules, fly NON-STOP between Detroit and New York in the surprising time of 2 hours, 40 minutes . . . the only through non-stop service between these cities.

Between Detroit and Chicago, American Airlines now operates 8 non-stop schedules daily (2 subject to South Bend traffic) and 1 frequent-stop service (via Ann Arbor, Jackson, Battle Creek, Kalamazoo, South Bend.)

BUFFALO TRAVELERS: REMEMBER...

Between Buffalo and New York, in addition to the four 94-minute Douglas flights, American operates 1 trip to New York via Elmira-Corning-Scranton . . . also operates 1 trip to **Boston** via Rochester-Syracuse-Utica-Albany.

BETWEEN BOSTON AND NEW YORK: INCREASED SERVICE . . .

NOW: EIGHT FLIGHTS A DAY, each way, between Boston and New York: Five non-stop trips each way, average flying time:

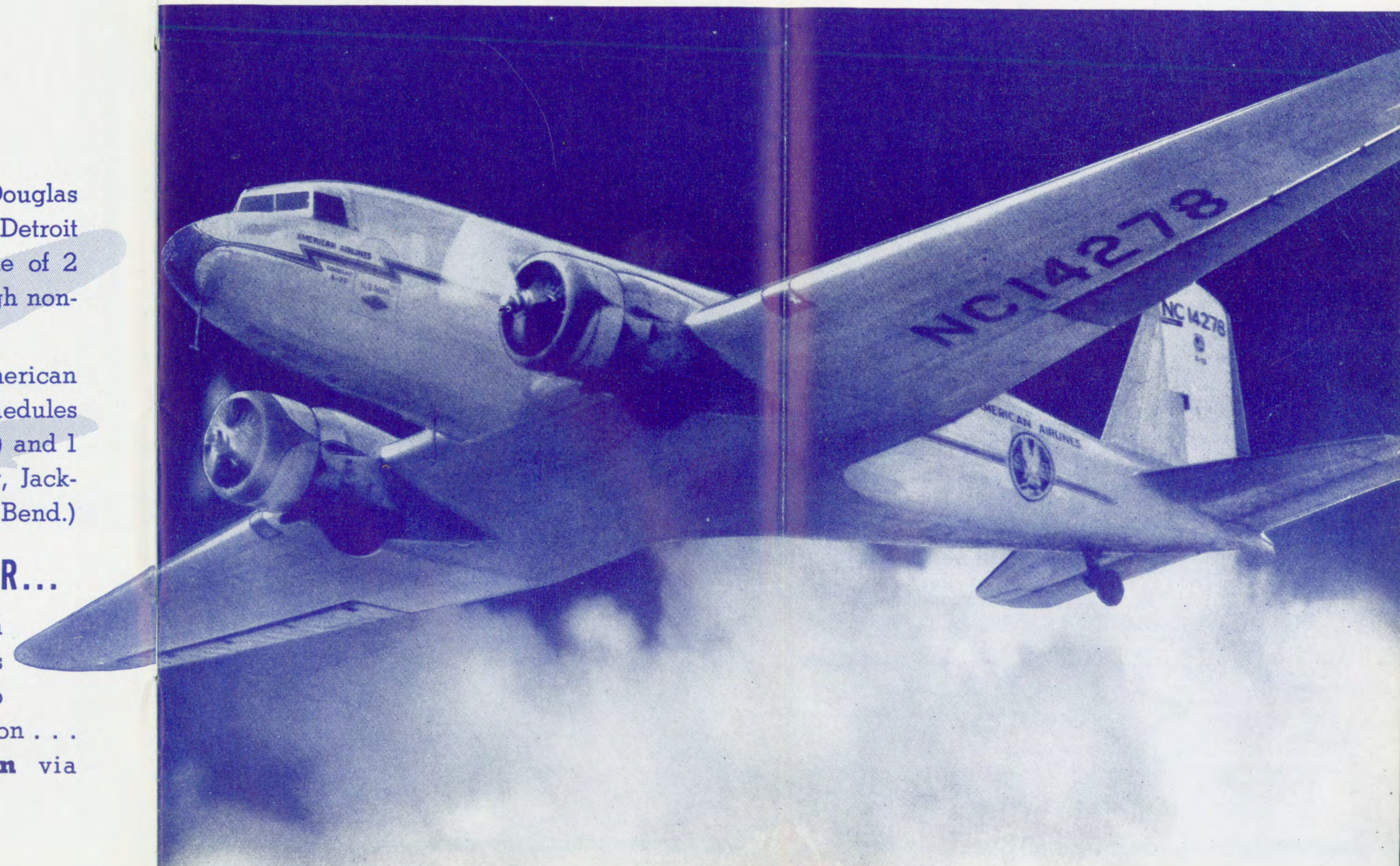
90 minutes. Three trips via Hartford-New Haven: Equipment: Giant Curtiss Condor 15-passenger planes.

A WORD ABOUT ★AMERICAN AIRLINES DOUGLAS DC2 TRANSPORTS . . .

American Airlines Douglas Airliners carry 14 passengers, 2 pilots, stewardess . . . Fuselage sound-proofed, insulated, ventilated . . . cabin high enough to stand in, plenty of leg room . . . latest all-metal construction throughout . . . driven 200 M. P. H. by twin 725

horse-power Wright-Cyclone engines with 3-bladed adjustable propellers . . . overall length: 62 ft., wing span: 85 ft. . . . weight of plane empty 6 tons, load carried 3 tons.

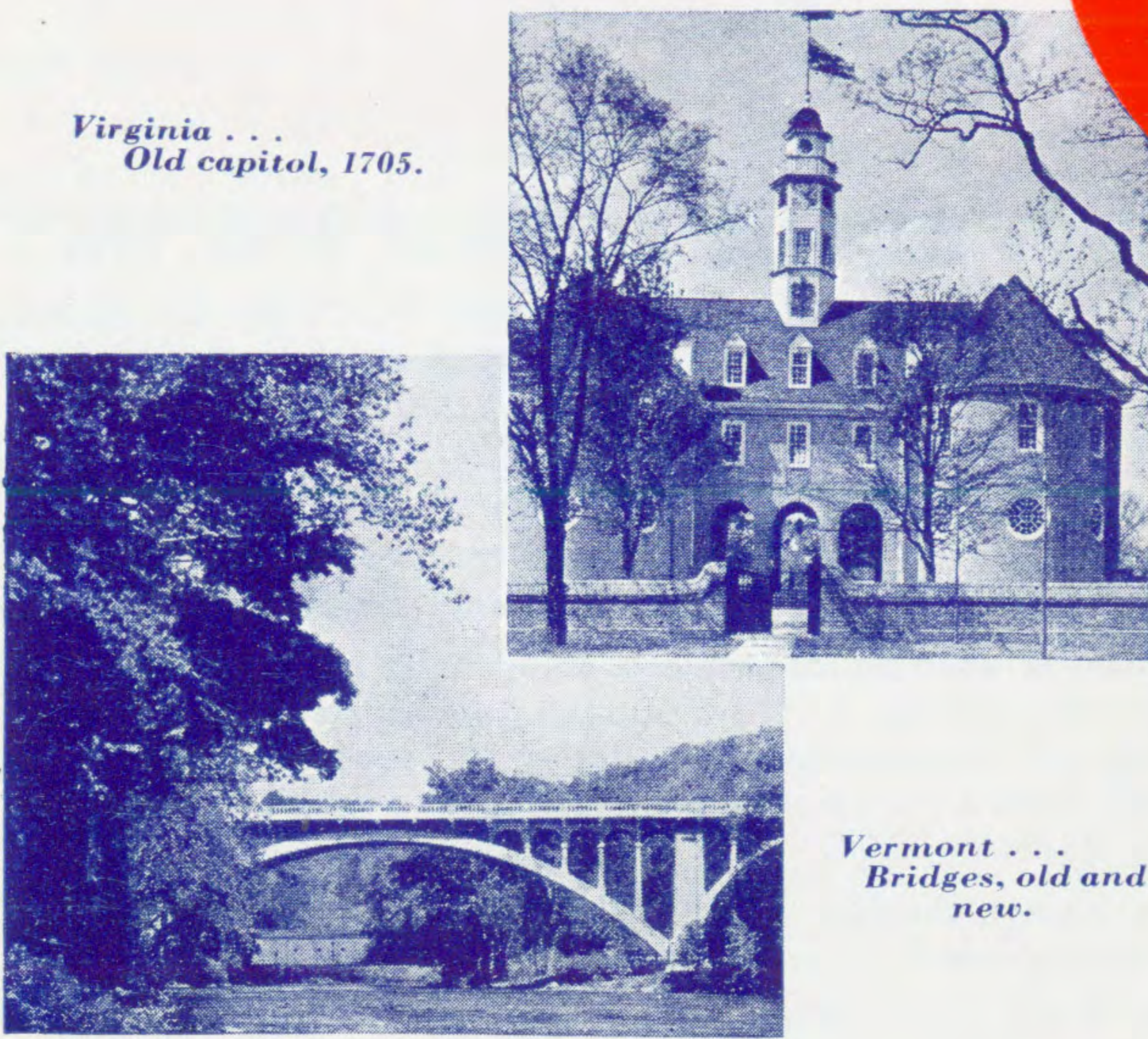
★(American Airlines this month received from the Douglas Aircraft Company the 100th Douglas Transport DC2.)



HOW AMERICAN AIRLINES "SOUTHERN TRANSCONTINENTAL" GIVES YOU . .

★ Triple ★ TRANSCONTINENTAL SERVICE ★

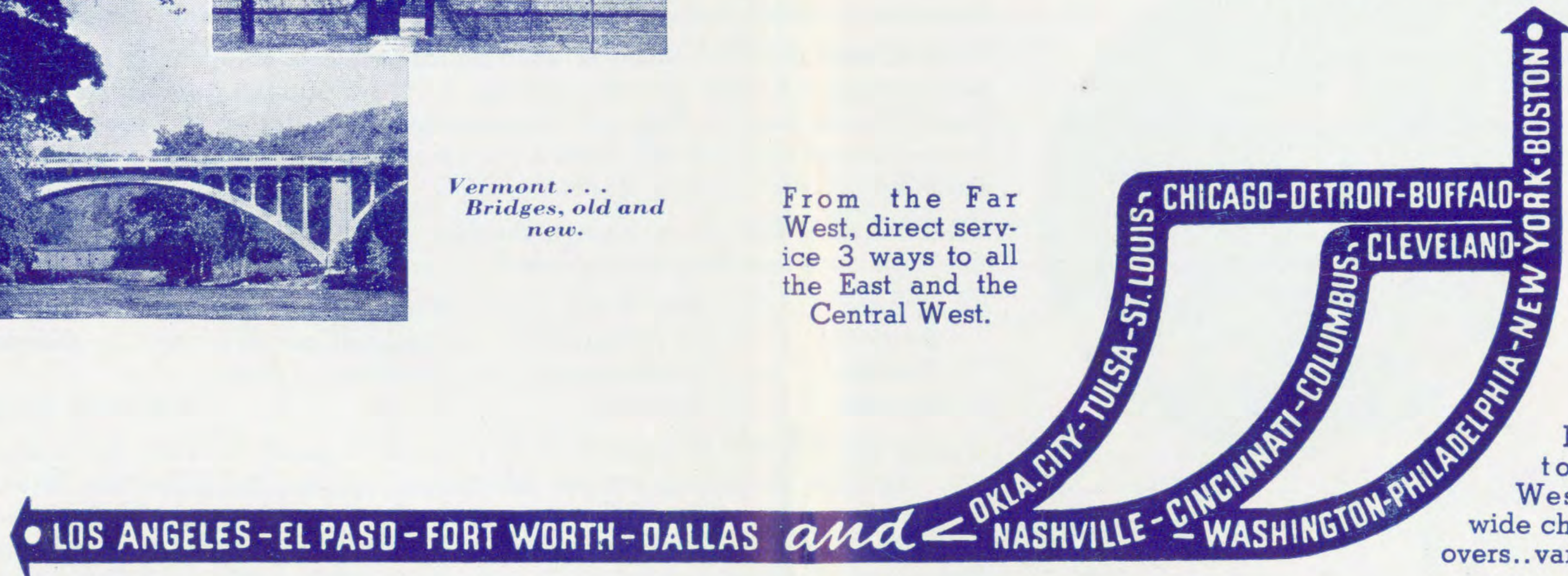
Among the ★ several exclusive services of the famous "Southern Transcontinental," we should like to emphasize most strongly (now that vacation time is here) its Triple-Transcontinental feature. This map explains, in simplest form:



Virginia . . .
Old Capitol, 1705.

Vermont . . .
Bridges, old and
new.

From the Far
West, direct service
3 ways to all
the East and the
Central West.



From the
East, 3 routes
toward the
West, offering
wide choice of stop-
overs..varied scenery.

Notice that on this system you can fly one way there, another way back, make any number of stop-overs—all for the regular round-trip price: double one-way fare, less 10%. And only on American Airlines can you reach so many important cities over so many different routings. (Be sure to discuss this feature with your agent.)

Remember: Only American Airlines "Southern Transcontinental" can offer you the world's first and only Sleeper Plane service . . . and there's no extra fare to pay!

★ Other Exclusive "Southern Transcontinental" Features:

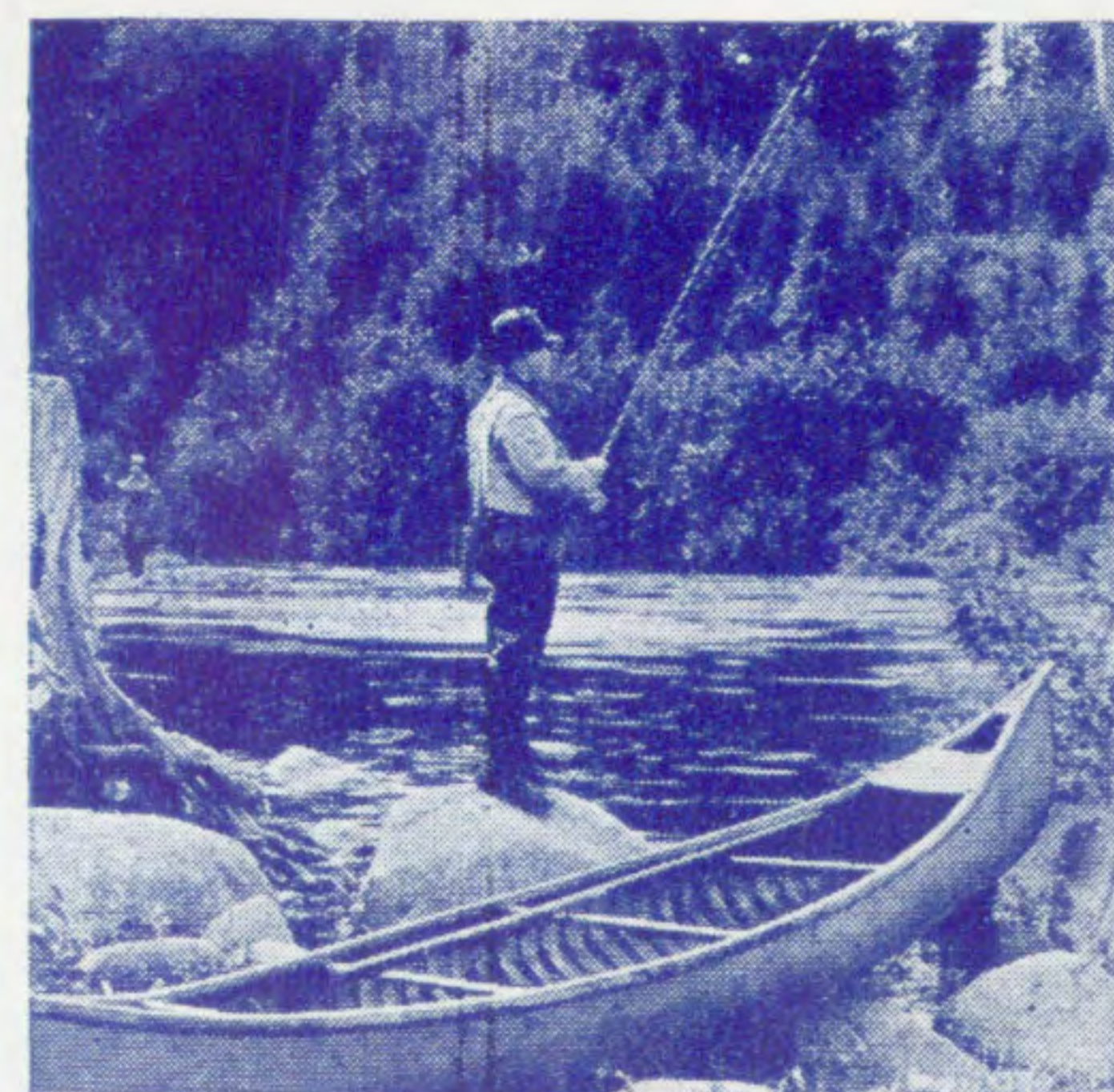
1. The World's only Convertible Sleeper Planes . . . no extra fare.
2. The only Douglas Planes with stewardess.
3. The only Transcontinental Service through Washington, D. C.
4. The only Transcontinental serving a Mexican Port: Juarez, just across the Rio Grande at El Paso.

In the East and North it's cool northern summertime . . .

For those of us who have family and friends back East the combination of time and ties grows just a bit too strong right now . . .

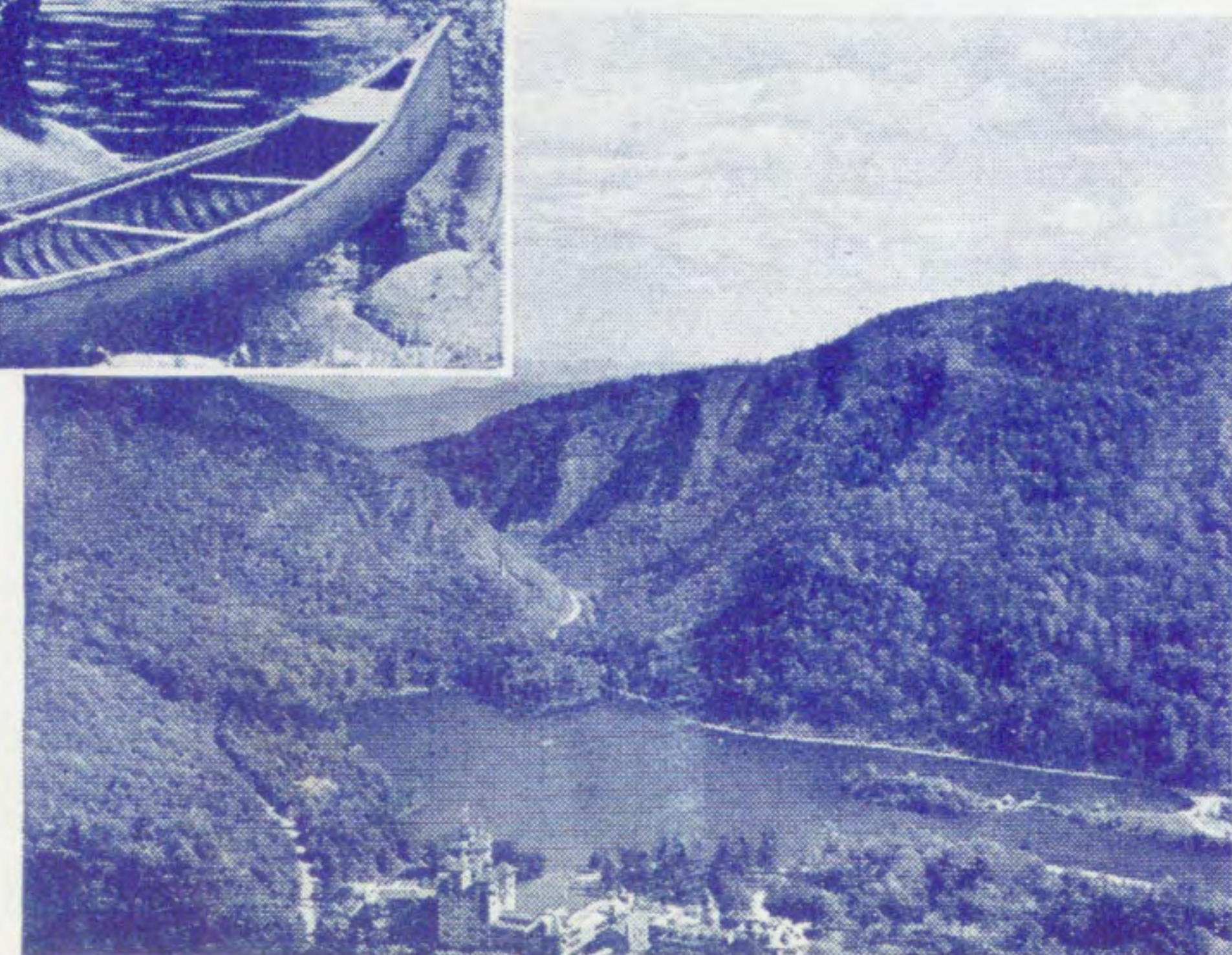
And for the rest of us who suffer only from summer wanderfoot . . . there's something in the remembered New England blue hills and green valleys, the pleasant resorts, the sun-washed granite coast of the deep Atlantic which sets our vacation minds to whirling . . .

Why not go East this year? It takes no time at all to make the trip (comfortably cool above the heat and dust) on the "Southern Transcontinental" . . . And you'll surely enjoy every separate minute of it.



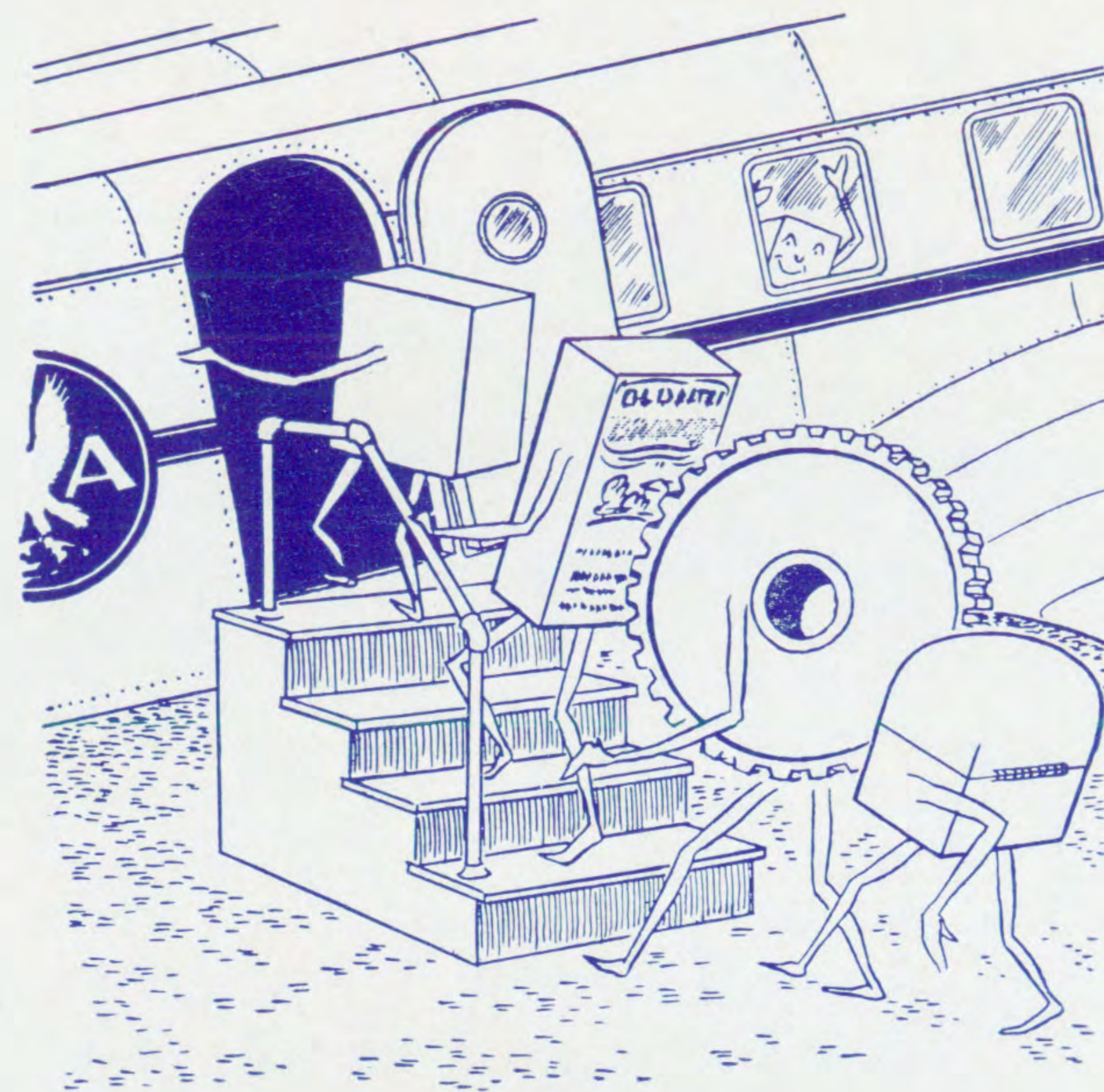
Maine . . .
Fishing the Kennebeco.

New Hampshire . . .
White Mountain
greenery.



AIR EXPRESS

Lends Wings to Your Packages . . .



Whenever you want to ship a parcel FAST . . . consider Air Express . . . a flexible, overnight, nation-wide high-speed service, lending itself to many purposes.

Such diverse articles as jewelry, silk, machine parts, securities, liquor samples, false teeth are shipped by air every day.

Rates are low: Now 85c minimum anywhere in the United States. Special Messenger service, no extra charge. Call any office of American Airlines as listed on page 8.

EXECUTIVES: From a sales standpoint, Air Express will deliver your samples to prospective buyers quickly, convincingly.

General Air Express



When Vacation Hits the Sales Force,

LET AIR MAIL CARRY THE LOAD

Sent air mail, your sales message will obtain the same audience accorded your regular salesman's presentation.

Air Mail letters have an **urgent** look . . . Received first, they are first opened, first answered.

Let air mail carry the load during this vacation season.

THINK OF AIR MAIL FOR YOUR . . .

- Sales Correspondence
- General Announcements
- Price List Changes
- New Product Information
- Promotional Campaign Openers

AIR MAIL POSTAGE NOW 6c for first ounce and each additional ounce.

FOREIGN SERVICE: Through Air Mail connections are available for mailings to the West Indies and principal South American cities. Inquire at your American Airlines office.

