

AMERICAN AIRLINES INC.

AIR TICKETS
— AND —
RESERVATIONS
ON ALL AIRLINES

AIRLINES TICKET AGENCY
OF E. K. SMITH, Inc. — 41 E. 47th ST.
ELdorado 5-2300



AMERICAN AIRLINES INC.

AMERICAN AIRLINES INC.

THIS MONTH

American Airlines announces . . .

- ✓ New planes, **twice** daily, faster service between northern New York cities, Boston and New York . . . faster service Buffalo-Cleveland.
- ✓ Schedules adjusted between Washington-Cincinnati and Detroit-Chicago on the frequent-stop service.
- ✓ Later departure from Newark for New York-Detroit non-stop service.

SEE SCHEDULES
PAGES 5-6-7



AIR TICKETS
— AND —
RESERVATIONS
ON ALL AIRLINES

AIRLINES TICKET AGENCY
OF E. K. SMITH, Inc. — 41 E. 47th ST.
ELdorado 5-2300

\$2,000,000 FOR A NEW ERA IN AVIATION

COMING IN MARCH
LARGEST LAND PLANES IN AMERICA



THE DST
219 miles-per-hour
. . . 24 seats in day planes;
16 berths (6 ft. 5 in.) in sleeper
planes . . . two pilots, automatic
gyro pilot, stewardess . . . weight
loaded: 12 tons . . . twin 930
h. p. engines . . . wing-
spread: 95 ft. . . .
length: 65 ft.

BIRTH OF THE "DST" . . . Last summer, as American Airlines passenger totals topped record after record, President C. R. Smith gave serious thought to serving still better this soaring public demand for winged travel.

To Donald Douglas of Douglas Aircraft at Santa Monica, he carried his problem. Result: the purchase by American Airlines of 20 new Douglas air giants (the "DST"), then but an engineer's dream on the drafting boards. Here were day ships designed to carry 24 passengers on long hops, 32 on short . . . sleeper planes fitted with 16 berths, a flying kitchen, double dressing rooms and toilets! Cost: nearly \$2,000,000. Expectation: a new era in air transportation, the conversion of many present non-flyers.

PROOF ALOFT . . . On December 18, 1935, the first DST stretched its bright wings in the Santa Monica sunlight, regally soared aloft under the hand of Douglas-Officer Carl Cover. After 1½ hours aloft its 12 tons glided easily to a perfect landing. Grinning faces of the test-pilots told a story of success to waiting dignitaries and engineers. Comments sparkled: "Power to burn! . . .

Fastest big transport in history! . . . Steady as an eagle! . . ."

SERVICE STARTS . . . NEW YORK-CHICAGO, COAST-TO-COAST . . . American Airlines in March will introduce these new air giants to the public with regular 24-passenger day plane service between New York-Chicago . . . in April or May, will replace its present (world's only) transcontinental sleeper service with new giant 16-berth Pullman-style sleeper planes between New York-Tennessee-Texas-Arizona-Los Angeles. This means greater comfort, no changing planes, from coast-to-coast.

LEADER THROUGH ACHIEVEMENT . . . In 1936, American Airlines, with the inauguration of the new giant DST, becomes the unchallenged leader in American air transportation. Already the largest airline in the United States, serving 57 major cities, having carried more passengers than any line in the world, it becomes the operator of the largest, finest, land planes on this continent. To American passengers this means simply: better service, more value per travel dollar.

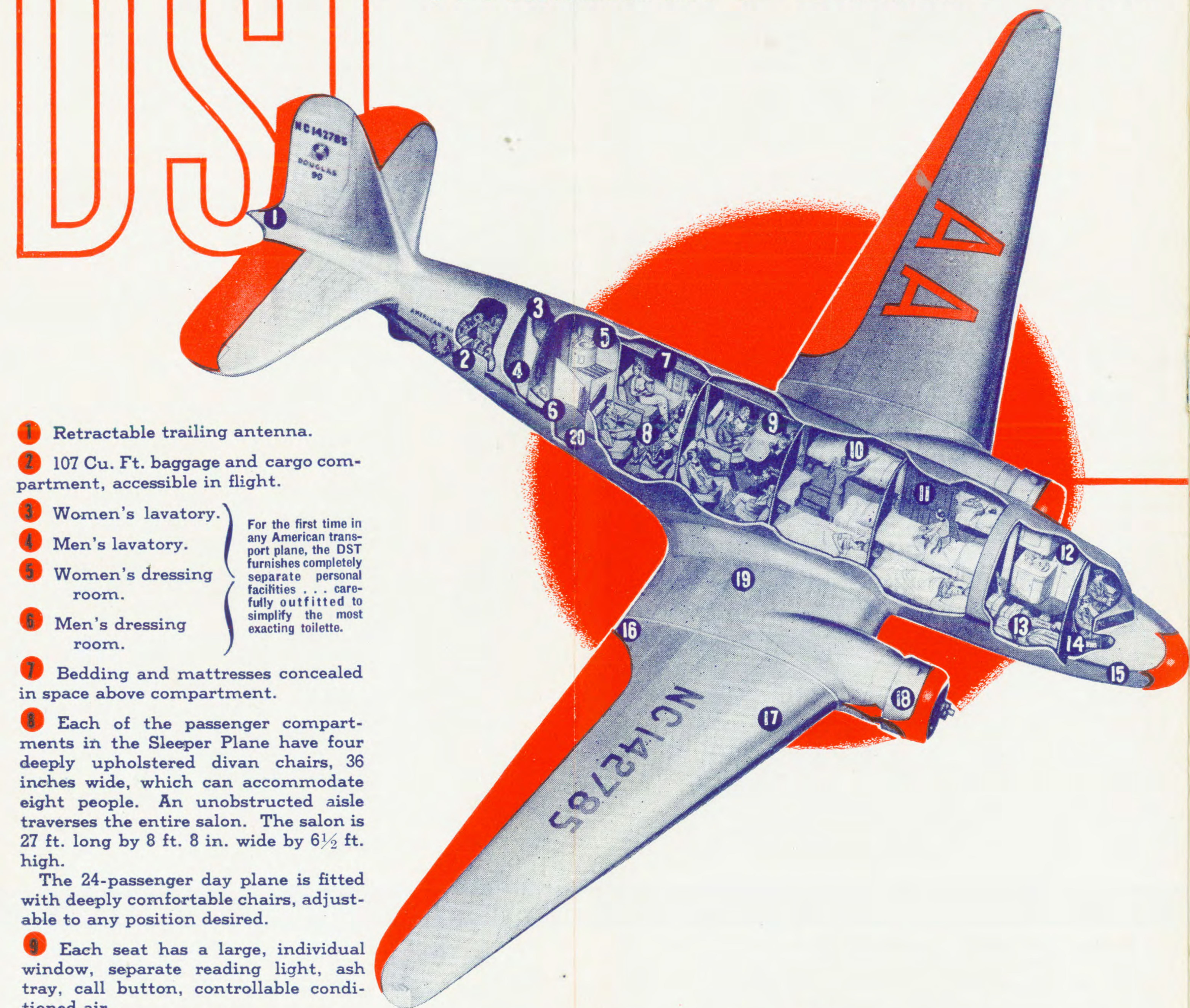
AIRLINES TICKET AGENCY OF E. K. SMITH, INC.
ELDORADO 5-2300
41 EAST 47TH ST., NEW YORK

SYSTEM TIME TABLE FEBRUARY 1, 1936

PRINTED IN U. S. A. CALVERT-HATCH CO.

DOUGLAS
DST
 SUPER TRANSPORT

... AMERICA'S LARGEST LAND PLANE ...



- 1 Retractable trailing antenna.
- 2 107 Cu. Ft. baggage and cargo compartment, accessible in flight.
- 3 Women's lavatory.
- 4 Men's lavatory.
- 5 Women's dressing room.
- 6 Men's dressing room.
- 7 Bedding and mattresses concealed in space above compartment.
- 8 Each of the passenger compartments in the Sleeper Plane have four deeply upholstered divan chairs, 36 inches wide, which can accommodate eight people. An unobstructed aisle traverses the entire salon. The salon is 27 ft. long by 8 ft. 8 in. wide by 6½ ft. high.
- 9 The 24-passenger day plane is fitted with deeply comfortable chairs, adjustable to any position desired.
- 10 Each seat has a large, individual window, separate reading light, ash tray, call button, controllable conditioned air.
- 11 Berths are 6 ft. 5 in. long and are provided with coil mattresses formed from the divan seats. The lower berth is 36 in. wide. The upper berth is 34 in. wide. Head rests fold down to form handy shelves. Apparel nets are provided. An individual window is installed in the upper berth. Each passenger is supplied with an attractive

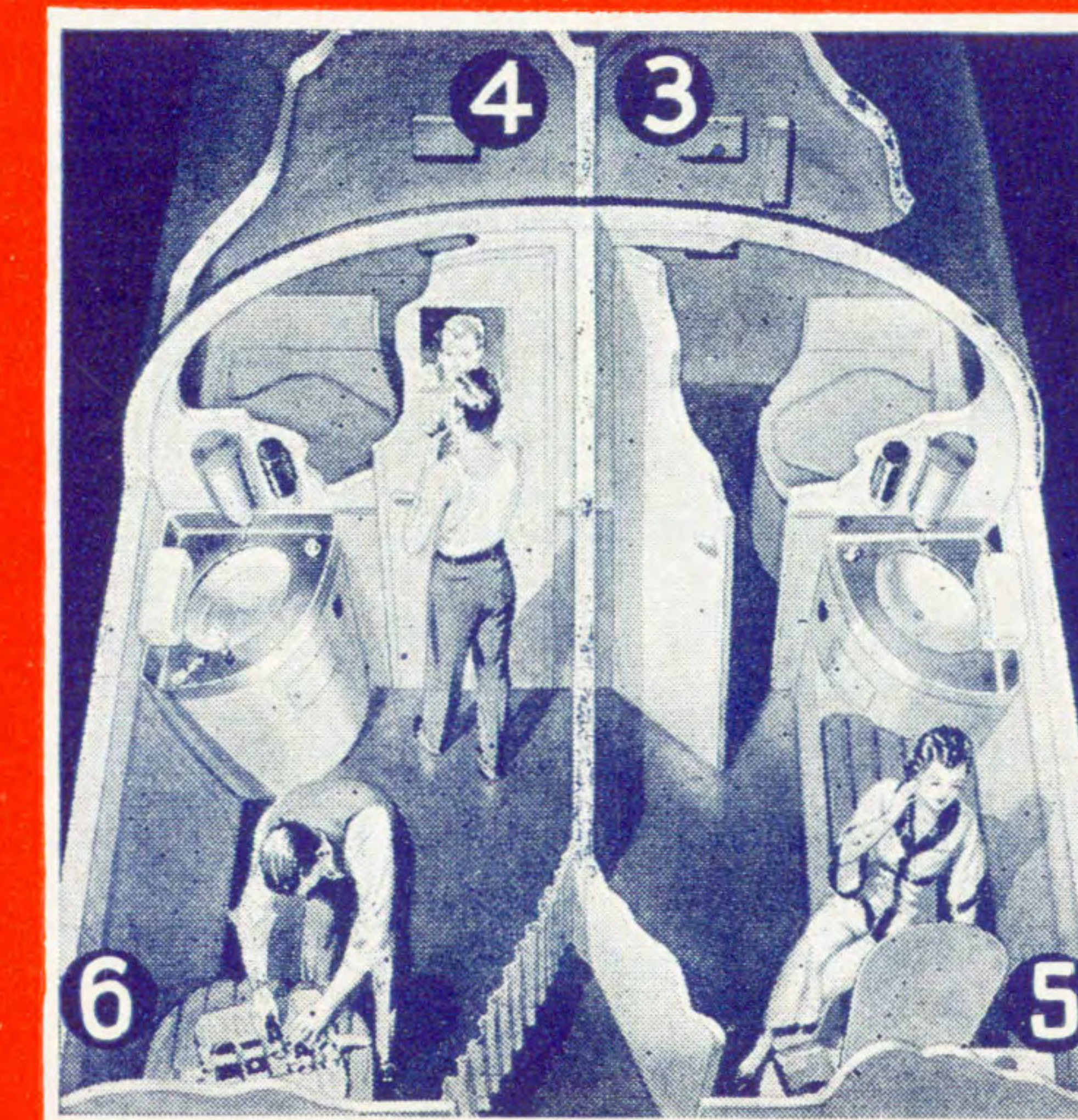
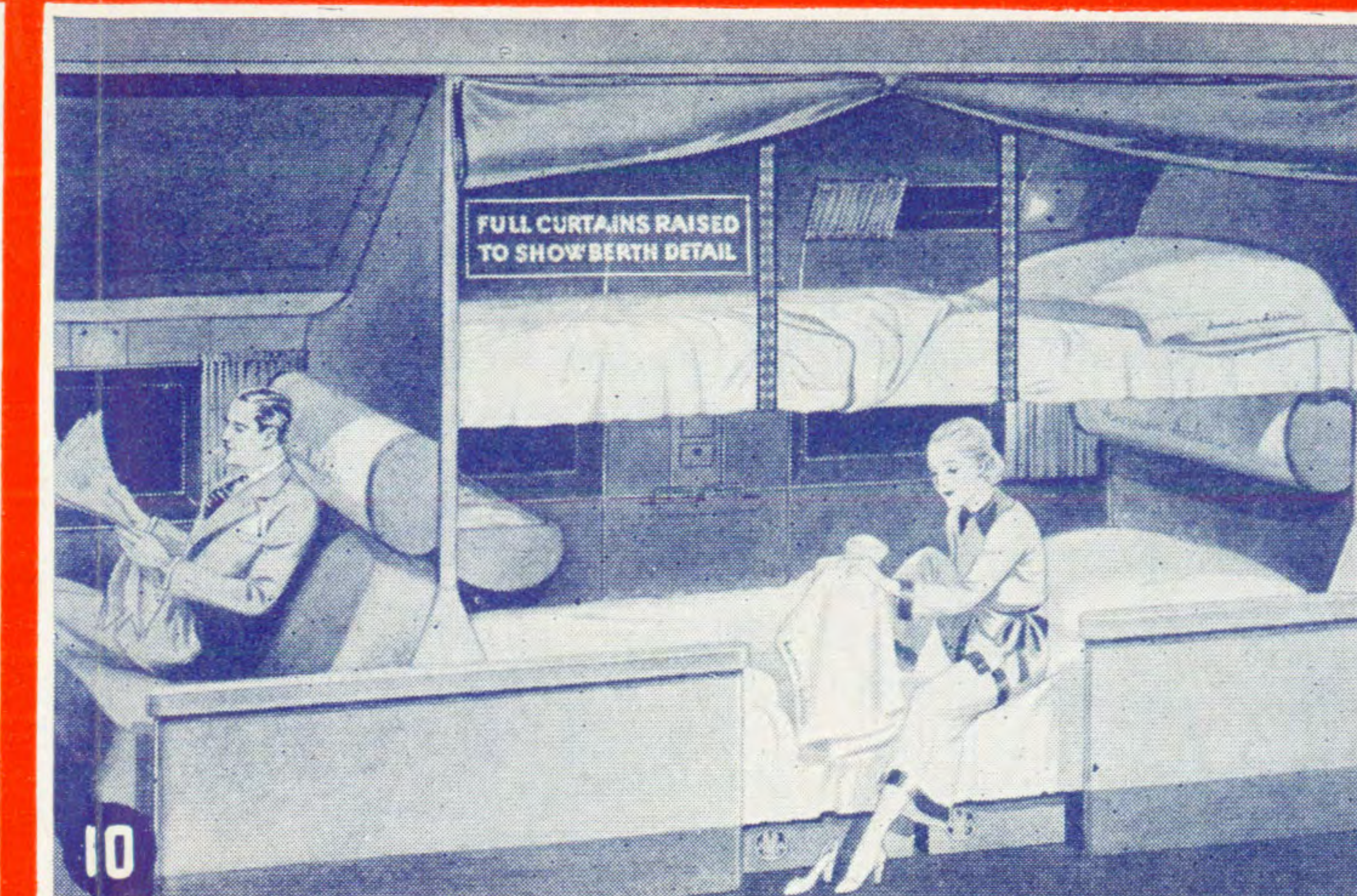
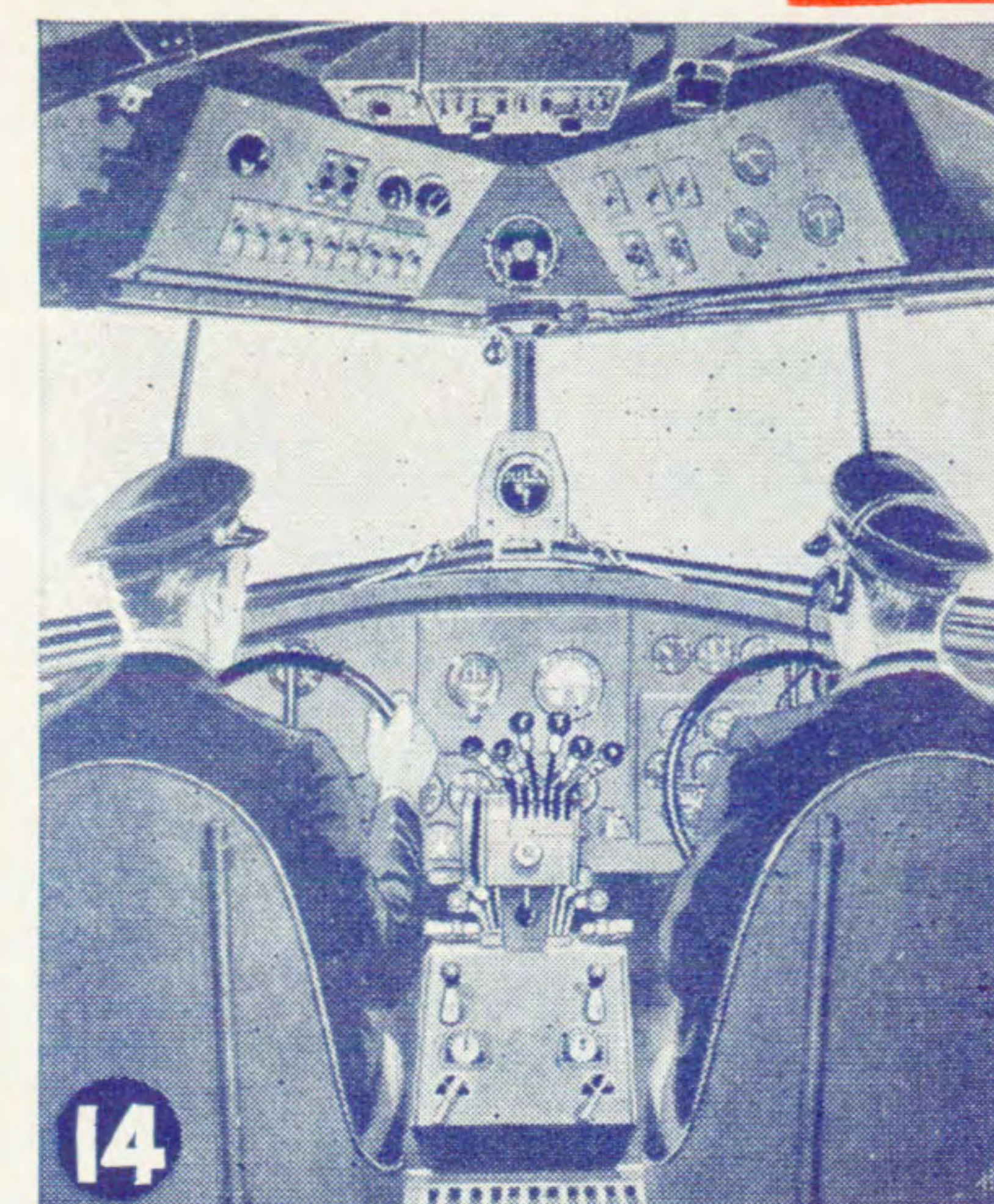
For the first time in any American transport plane, the DST furnishes completely separate personal facilities... carefully outfitted to simplify the most exacting toilette.

overnight case which conveniently fits under the divan seats.

- 11 Heavy curtains give privacy and generous room for each passenger.
- 12 A fully equipped flying kitchen with electric stove, ice box and cabinets.
- 13 35 cu. ft. mail compartment.

14 Unusually large pilot's compartment equipped with every aid to day and night flying under all conditions... fittings include automatic gyro pilot and four radio installations.

15 Directional beam radio antenna located under nose.



- 16 Air brakes, located on under side of wing, reduce landing speed to minimum.
- 17 Powerful landing lights are built into wing. Port and starboard navigation lights located at wing tips.
- 18 Two 930 h.p. engines, equipped with three-blade constant pitch controllable propellers give a speed of 219 m.p.h. Either engine can fly the airplane fully loaded. Landing wheels retract into engine nacelles.
- 19 All-metal construction of greatest known strength/weight ratio used throughout. Wing spread is 95 feet and distance from nose to tail 65 feet. Gross weight of the plane is 24,000 pounds.
- 20 Main entry door.

AMERICAN AIRLINES INC.
 LARGEST AIRLINE IN THE UNITED STATES



AMERICAN AIRLINES INC.

EXAMPLES OF FARES

For Complete Fares Call Your Transportation Agent or Nearest American Airlines Office

CHICAGO to:		DALLAS and FT. WORTH to:		LOS ANGELES to:		NEW YORK to:					
O.W.	R.T.	O.W.	R.T.	O.W.	R.T.	O.W.	R.T.				
Boston	\$ 54.20	\$ 97.55	Chicago	\$ 51.95	\$ 93.50	Boston	\$ 13.90	\$ 25.00			
Buffalo	26.00	46.80	Cleveland	69.10	124.35	Chicago	21.95	39.51			
Cincinnati	16.00	28.80	New York	*86.60	*155.55	Cleveland	47.95	86.30			
Detroit	13.25	23.85	St. Louis	38.00	68.40	Dallas	38.10	68.55			
Phoenix	100.40	186.10	Tulsa	17.00	30.60	Detroit	62.10	111.75			
St. Louis	13.95	25.10	Washington	*74.45	*134.00	Memphis	62.10	111.75			
San Diego	115.90	207.00	DETROIT to:		Ft. Worth	77.50	139.50	San Diego	160.00	288.00	
San Francisco	115.90	207.00	Boston	40.96	73.73	New York	160.00	288.00	San Francisco	160.00	288.00
Syracuse	34.16	61.49	Chicago	13.25	23.85	Philadelphia	160.00	288.00	WASHINGTON to:		
Tucson	99.95	179.90	New York	34.70	62.46	Phoenix	23.15	41.65	Boston	26.10	46.90
Washington	36.00	64.80	St. Louis	27.20	48.96	St. Louis	103.00	185.40	Cincinnati	25.90	46.60
						Washington	147.75	265.95	New York	12.20	21.90

*This fare is effective February 10, 1936.

GENERAL INFORMATION

ANIMALS—Live animals and reptiles will not be accepted for transportation over the lines of the Company under any condition.

BAGGAGE—Thirty-five (35) pounds of baggage will be carried free on any ticket. Excess baggage carried upon special arrangements and shall be at the rate per pound of one-half of one per cent, of the published air passenger fare, with a minimum charge of twenty-five cents, and the liability of the Carrier for loss of or damage to baggage and/or personal property is limited to the amount of One Hundred Dollars (\$100.00) unless a higher valuation be declared and an additional charge paid therefor. Excess valuation limited to \$1000.00 on each full fare ticket.

CHILDREN—Children under two years of age, when held in arms of parents or guardian, carried free. Children over two years of age will be charged full fare.

COMFORT FACILITIES—Comfort facilities are available on all American Airlines passenger planes and at all airports.

COMMENTS—Suggestions for the betterment of the service should be addressed to the General Sales Manager, American Airlines, Inc., 6240 So. Kedzie Ave., Chicago, Ill.

INSURANCE—Trip insurance is available at most airports.

PASSAGE, CANCELLATION BY COMPANY—The Company reserves the right to cancel bookings before passage or en route. Pilot may remove passengers from plane at any point on the route for safety or other cause. In all events the passenger's sole recourse shall be recovery of that portion of the fare equal to the distance untraveled.

PASSAGE, CANCELLATION BY PASSENGER—The Purchaser may receive a refund for passage if canceled two hours prior to flight.

PASSAGE, REFUSAL OF—The person in charge at any point of departure or the Pilot may refuse to carry any holder of a ticket, whenever he believes the proposed passenger is suffering from permanent or temporary disability, which wholly in the discretion of such Manager or Pilot, might jeopardize the safety of such passenger or the plane. In any such case the passenger shall be entitled to the return of the price of the ticket but no other damages.

REFUNDS—Requests for refunds on tickets should be addressed to the Auditor of Ticket Accounts, American Airlines, Inc., 4848 West Sixty-Third St., Chicago, Ill.

RESERVATIONS—All space is reserved though no definite seat assignments are made. Reservations will not be made except upon payment of fare.

ROUND TRIP FARES—10% reduction on all round-trip tickets if purchased before start of original trip. Return trip must be started within sixty days.

STOP-OVER—Ten (10) day stop-over will be allowed at any regular stop provided reservation is made accordingly.

TIME-TABLES—These time-tables show the times at which planes may be expected to depart from and arrive at the several stations shown, and to connect with trains or other planes, but their departure, arrival, or connection at the time stated is not guaranteed. American Airlines reserves the right to vary from the time shown in this folder without notice to the public.

WEARING APPAREL—Cabins of American Airlines planes are comfortably heated and ventilated. Wear regular apparel regardless of season.

SOUTHERN TRANSCONTINENTAL

**BOSTON—NEW YORK—PHILADELPHIA
WASHINGTON—TEXAS—LOS ANGELES**

WESTBOUND Read Down		TABLE 1 No Extra Charge on Sleeper Planes		EASTBOUND Read Up	
No. 5 †	The Southerner No. 1 Daily	Mls.		The Southerner No. 2 Daily	No. 6 †
	10.00am	0	Lv Boston.....(E.T.)	Ar	9.39pm
	11.40am	201	Ar New York (Newark)	Lv	8.00pm
			Lv NEW YORK.....	Ar	6.53pm
	* 12.30pm	0	Lv PHILADELPHIA..	Ar	6.15pm
	1.09pm	72	Lv WASHINGTON....	Lv	5.23pm
	2.04pm	203	Lv WASHINGTON....	Ar	5.11pm
	2.16pm	203	Lv Lynchburg.....	Lv	4.36pm
	11.30am		Lv Roanoke.....	Lv	3.30pm
	12.50pm		Lv Bristol.....	Lv	3.02pm
	1.21pm		Lv Knoxville.....(C.T.)	Lv	2.03pm
	2.41pm		Lv Nashville.....	Lv	12.06pm
	2.43pm		Lv Nashville.....	Ar	11.00am
	4.03pm		Lv Memphis.....	Ar	12.46pm
		Douglas	Lv Memphis.....	Lv	11.29am
			Lv Memphis.....	Ar	11.24am
			Lv Little Rock.....	Lv	10.31am
			Lv Little Rock.....	Ar	10.21am
			Lv DALLAS.....	Lv	8.37am
			Lv FT. WORTH.....	Lv	8.14am
			Lv DALLAS.....	Ar	7.58am
			Lv FT. WORTH.....	Ar	7.28am
			Lv Abilene.....	Lv	x 6.26am
			Lv Big Spring.....	Lv	δ 5.33am
			Lv El Paso.....(M.T.)	Lv	2.25am
			Lv Douglas.....	Lv	2.13am
			Lv El Paso.....	Lv	12.55am
			Lv Tucson.....	Lv	12.02am
			Lv Tucson.....	Ar	11.57am
			Lv Phoenix.....	Lv	11.07pm
			Lv Phoenix.....	Ar	10.55pm
			Ar Palm Springs.....(P.T.)	Lv	-
			Ar Los Angeles.....	Lv	7.30pm
			Ar Los Angeles.....(Glendale)	Lv	-
			Lv Los Angeles.(UAL)	Ar	6.00pm
			Ar San Francisco	Lv	4.00pm
			Lv Los Angeles.(WAE)	Ar	11.50am
			Ar San Diego	Lv	11.00am

NOTE—Stewardess service New York-Los Angeles, trips 1 and 2.

Equipment: Trips 5 and 6 Trimotor Stinson A's.

AA—American Airlines. BAL—Bowen Air Lines.
EAL—Eastern Air Lines. BNF—Branniff Airways.
NWA—Northwest Airlines. CCA—Canadian Colonial Airways.
TWA—Transcontinental and Western Air. PAL—Pennsylvania Airlines.
UAL—United Air Lines. WAE—Western Air Express. CEN—Central Airlines.
ET—Eastern Time. CT—Central Time.
MT—Mountain Time. PT—Pacific Time.
•—Meal aloft. δ—Light breakfast aloft. †—Meal stop.
⊕—Stops only to discharge passengers originating beyond Newark.
⊙—N. Y., N. H. & H. Train No. 2, New York to Boston.
†—Daily except Sunday and Holidays.
▲—No local passengers or express carried between New Haven-Hartford.
‡—No local service between St. Louis and E. St. Louis. Operated for benefit of passengers originating at or destined to Springfield, Ill. or beyond.
§—Stops to pick up passengers for Dallas and beyond.
¶—Stops to discharge passengers from Dallas and beyond.
#—Daily except Sunday.
□—Stops only to discharge passengers.
f—Stops to pick up or discharge passengers holding reservations.
g—Stops to discharge passengers originating at Ft. Worth and beyond.
k—Stops to pick up passengers destined to Ft. Worth and beyond.
l—Stops to discharge passengers from beyond Chicago or to pick up passengers. Meals provided passengers boarding trip at South Bend.
x—Stops to discharge passengers from Tucson and points west and pick up passengers holding reservations to Memphis or Tulsa and points beyond.

**BOSTON—NEW YORK—CLEVELAND
CINCINNATI—TEXAS—LOS ANGELES**

WESTBOUND Read Down		TABLE 2 No Extra Charge on Sleeper Planes		EASTBOUND Read Up	
No. 1 Daily	No. 3 Daily	Mls.		No. 4 Daily	No. 2 Daily
	5.45pm	0	Lv Boston.....(E.T.)	Ar	5.09pm
	7.25pm	218	Ar New York.....(Newark)	Lv	3.30pm
			Lv Philadelphia.....(Camden)	Ar	2.47pm
	8.30am	218	Lv New York.....(UAL)	Ar	10.00pm
	11.20am	623	Ar Cleveland	Lv	12.12pm
			Lv Philadelphia.....(Camden)	Ar	-
	3.25pm		Ar Cleveland	Lv	-
	6.03pm		Lv Washington.....	Ar	-
			Lv Pittsburgh.....	Ar	-
			Ar Cleveland	Lv	-
			Lv Washington.....	Ar	-
			Lv Pittsburgh.....	Ar	-
			Ar Cleveland	Lv	-
			Lv Boston.....	Ar	-
			Ar New York.....(Newark)	Lv	-
			Lv New York.....(TWA)	Ar	-
			Ar Columbus	Lv	-
			Lv CLEVELAND.....	Ar	-
			Ar Columbus.....	Lv	-
			Ar Cincinnati.....	Lv	-
			Lv Cincinnati.....	Ar	-
			Ar Louisville.....(C.T.)	Lv	-
			Lv Louisville.....	Ar	-
			Ar Nashville.....	Lv	-
			Lv Nashville.....	Ar	-
			Ar Memphis.....	Lv	-
			Lv Memphis.....	Ar	-
			Ar Little Rock.....	Lv	-
			Lv Little Rock.....	Ar	-
			Ar DALLAS.....	Lv	-
			Lv FT. WORTH.....	Ar	-
			Lv DALLAS.....	Ar	-
			Lv FT. WORTH.....	Ar	-
			Lv Abilene.....	Lv	-
			Lv Big Spring.....	Lv	-
			Lv El Paso.....(M.T.)	Lv	-
			Lv Douglas.....	Lv	-
			Lv El Paso.....	Lv	-
			Lv Tucson.....	Lv	-
			Lv Tucson.....	Ar	-
			Lv Phoenix.....	Lv	-
			Lv Phoenix.....	Ar	-
			Ar Palm Springs.....(P.T.)	Lv	-
			Ar Los Angeles.....	Lv	-
			Ar Los Angeles.....(Glendale)	Lv	-
			Lv Los Angeles.(UAL)	Ar	-
			Ar San Francisco	Lv	-
			Lv Los Angeles.(WAE)	Ar	-
			Ar San Diego	Lv	-

Connections at DALLAS to and from SOUTH TEXAS

BAL	BNF		BAL	BNF
Daily	Daily		Daily	Daily
8.20	9.20	Lv DALLAS.....(C.T.)	Ar	6.25 2.35
9.40	10.50	Ar HOUSTON.....	Lv	5.05 1.05
8.30	8.35	Lv DALLAS.....	Ar	6.30 2.35
-	9.40	Ar Waco.....	Lv	- 1.40
9.35	10.30	Ar Austin.....	Lv	5.30 1.00
10.10	11.05	Ar SAN ANTONIO.....	Lv	4.55 1.20

NOTE—Stewardess service on trips 3 and 4 Cleveland-Los Angeles; 1 and 2 Nashville-Los Angeles.



BOSTON—NEW YORK—WASHINGTON

SOUTHBOUND—Read Down								NORTHBOUND—Read Up							
No. 5 Daily	No. 3 Daily	No. 17 Daily	No. 9 Daily	No. 11 Daily	No. 1 Daily	The Early Bird No. 15 †	Mls.	The Early Bird No. 2 Daily	No. 4 † Daily	No. 10 Daily	No. 14 Daily	No. 12 Daily	No. 8 Daily	No. 6 Daily	
8:00pm	5:45pm	3:50pm	2:30pm	12:45pm	10:00am	7:30am	102	9:15am	11:27am	3:27pm	5:09pm	6:57pm	8:09pm	9:39pm	
8:56pm	-	-	3:39pm	1:41pm	-	8:26am	102	8:30am	-	4:24pm	-	-	7:24pm	8:54pm	
9:54pm	7:25pm	5:30pm	4:26pm	2:39pm	11:40am	9:24am	218	7:15am	10:00am	2:00pm	3:30pm	5:30pm	6:30pm	8:09pm	
No. 1 Daily	No. 5 Daily	No. 23 Daily	No. 21 Daily		A.A.No.1 Daily	No. 3 Daily		No. 4 Daily	No. 2 Daily	No. 22 Daily	No. 28 † Daily	No. 20 Daily	No. 6 Daily	A.A.No.2 Daily	
10:10pm	9:10pm	5:40pm	3:10pm		12:30pm	9:40am	0	5:50am	8:40am	11:50am	2:20pm	5:20pm	6:20pm	6:53pm	
10:40pm	-	-	4:30pm		1:04pm	-	72	4:30am	8:10am	-	-	-	-	6:20pm	
11:50pm	10:30pm	7:00pm	-		2:04pm	11:00am	203	7:00am	7:00am	10:30am	1:00pm	4:00pm	5:00pm	5:23pm	

Equipment—Boston-New York Condors; New York-Washington Douglas all flights except EAL 1 and 2 which are operated with Electras.

NEW YORK—BUFFALO—DETROIT—CHICAGO—ST. LOUIS

WESTBOUND—Read Down								EASTBOUND—Read Up							
The Chicago No. 1 Daily	The Detroit No. 17 Daily	No. 23 †	Pacific Northwest No. 3 Daily	No. 15 Daily	Michigan Flyer No. 25 †	The Niagara No. 9 Daily	The Night-Owl No. 7 Daily	Mls.	The Night-Owl No. 8 Daily	No. 24 †	The Niagara No. 10 Daily	The Manhattan No. 12 Daily	The Detroit No. 16 Daily	Michigan Flyer No. 26 †	The New Yorker No. 4 Daily
6:00pm	5:00pm	4:45pm	3:00pm	Noon	Noon	8:00am	1:00pm	0	6:10am	11:55am	1:42pm	4:55pm	7:40pm	9:40pm	11:20pm
8:00pm	-	7:38pm	5:00pm	12:00pm	10:00pm	3:00pm	3:00pm	282	6:46pm	9:30pm	12:08pm	3:21pm	5:06pm	8:06pm	-
8:10pm	-	-	5:10pm	2:10pm	10:10pm	3:10pm	2:10pm	282	4:24pm	11:56pm	3:09pm	5:54pm	7:54pm	-	-
9:40pm	8:21pm	-	6:40pm	3:40pm	11:43pm	4:40pm	5:04pm	504	3:06pm	10:36pm	1:51pm	4:36pm	6:36pm	8:40pm	
9:48pm	8:33pm	-	6:48pm	3:48pm	12:00pm	4:40pm	5:04pm	504	2:58pm	10:28pm	1:43pm	4:28pm	6:28pm	7:52pm	
10:07pm	-	-	-	12:58pm	-	-	-	-	-	-	r11:30pm	-	-	5:08pm	
10:51pm	9:15pm	-	7:30pm	4:30pm	12:33pm	5:30pm	7:51am	751	12:30am	8:00am	11:00am	2:00pm	4:00pm	4:30pm	
pm	pm	pm	pm	pm	pm	pm	am		am	am	am	pm	pm	pm	pm

Equipment—All trips Douglases except trips 23, 24, 25 and 26 which are operated with "A" Stinsons. NOTE—Stewardess service on all Douglas trips. ★—See table 7 for St. Louis, Tulsa, Oklahoma City and Texas connections.

NEW YORK—SCRANTON—ELMIRA—BUFFALO—MICHIGAN POINTS—CHICAGO

WESTBOUND Read Down			EASTBOUND Read Up		
No. 23 †	TABLE 5	No. 24 †	No. 9 Daily	TABLE 5A	No. 4 Daily
4:45pm	0 Lv NEW YORK (Newark) (E.T.)	11:55am	8:00am	0 Lv NEW YORK (Newark) (E.T.)	11:20am
5:44pm	107 Lv Scranton	11:07pm	10:10pm	282 Lv Buffalo	-
6:36pm	182 Lv Elmira-Corning	10:29pm	11:43pm	504 Lv DETROIT	8:40pm
7:38pm	290 AR BUFFALO	9:30pm			
No. 1 Daily		No. 8 Daily	Michigan Flyer No. 25 †		Michigan Flyer No. 26 †
8:10pm	290 Lv BUFFALO (E.T.)	4:24pm	12:00pm	504 Lv DETROIT (E.T.)	7:52pm
9:40pm	512 AR Detroit	3:06pm	12:49pm	580 Lv Ann Arbor	7:17pm
10:07pm	AR South Bend (C.T.)	-	1:15pm	619 Lv Battle Creek	6:53pm
10:51pm	759 AR CHICAGO	12:30pm	1:30pm	636 Lv Kalamazoo	6:37pm
			1:01pm	690 Lv South Bend (C.T.)	5:08pm
			1:40pm	775 AR CHICAGO	4:30pm

Equipment Table 5—New York-Buffalo tri-motor Stinson "A"; Buffalo-Chicago Douglas. Table 5A—New York-Detroit Douglas; Detroit-Chicago tri-motor Stinson A. NOTE Table 5—Stewardess service Buffalo-Chicago. Table 5A—Stewardess service New York-Detroit, Courier Detroit-Chicago.

For explanation of reference marks see page 5.

CHICAGO—ST. LOUIS—OKLAHOMA—TEXAS—LOS ANGELES

SOUTH and WEST—Read Down						EAST and NORTH—Read Up					
No. 7 Daily	The Longhorn No. 1 Daily	"The Lone Star" No. 5 Daily	"The Lone Star" St. Louis Section No. 11 Daily	Mls.	No. 6 Daily	"The Lone Star" No. 2 Daily	The Longhorn No. 4 Daily	The Longhorn St. Louis Section No. 12 Daily			
3:15pm	*12 Noon	8:30am	8:00am	0	10:44am	2:31pm	5:19pm	8:38pm			
4:27pm	..	-	9:00am	126	9:54am	-	-	7:37pm			
5:05pm	..	-	9:34am	189	9:22am	-	-	6:59pm			
5:48pm	1:42pm	10:12am	10:11am	267	8:45am	*1:02pm	3:50pm	*6:15pm			
	\$2.14pm		\$10.43am	285	AR E. St. Louis						
	1:54pm	10:24am		267	Lv ST. LOUIS						
	4:07pm	12:37pm		617	AR Tulsa			12:50pm	3:38pm		
	4:15pm	*12:45pm		617	Lv Tulsa			10:51am	1:39pm		
	5:01pm	1:31pm		728	AR Oklahoma City			10:43am	1:31pm		
	5:04pm	1:34pm		728	Lv Oklahoma City			10:01am	12:49pm		
	6:08pm	2:38pm		910	AR DALLAS			9:58am	12:46pm		
	6:30pm	3:00pm		939	AR FT. WORTH			8:48am	*11:36am		
	8:08am	10:07pm		910	Lv DALLAS			8:26am	11:14am		
	8:38am	10:37pm		939	Lv FT. WORTH						
	11:46pm	12:46am		1079	AR Abilene						
	12:46am	2:08am		1188	AR Big Spring						
	2:08am	3:49am		1480	AR El Paso (M.T.)						
	3:49am	4:45am		1682	AR Douglas						
	4:45am	5:42am		1783	AR Tucson						
	5:42am	6:38am		1890	AR Phoenix						
	6:38am	7:38am		2259	AR Palm Springs (P.T.)						
					AR LOS ANGELES						
					Lv Dallas (BAL) (C.T.)						
					AR Houston						

Equipment—Vultees trips 1, 2, 4, 5, 6, 11; Condors trips 7, 12; Condor Sleepers and Douglas carry Stewardesses. Note—See table 4 for Detroit, Buffalo and New York connections.

BOSTON—BUFFALO—CLEVELAND
NEW YORK—ALBANY—CLEVELAND

WESTBOUND Read Down			EASTBOUND Read Up		
CCA No. 2 #	No. 3 Daily	No. 15 Daily	Mls.	TABLE 8	CCA No. 1 #
	3:20pm	9:30am	0	Lv BOSTON (E.T.)	12:44pm
	4:39pm	10:49am	159	AR Albany	6:40pm
	8:30am	3:30pm	0	Lv NEW YORK (Newark)	12:49pm
	9:55am	4:35pm	142	AR Albany	6:45pm
	4:45pm	10:55am	159	Lv Albany	5:35pm
	5:39pm	-	241	Lv Utica	11:03am
	6:12pm	12:09pm	290	Lv Syracuse	10:34am
	*6:16pm	*12:13pm	290	Lv Syracuse	4:42pm
	7:00pm	12:57pm	362	Lv Rochester	4:38pm
	7:04pm	1:01pm	362	Lv Rochester	4:06pm
	7:39pm	1:36pm	417	Lv BUFFALO	4:02pm
	8:05pm	-	417	Lv BUFFALO	3:35pm
	9:44pm	-	614	AR CLEVELAND	8:00am

Connections at BUFFALO to and from DETROIT and CHICAGO

No. 1 Daily	No. 15 Daily	No. 8 Daily	No. 12 Daily
8:10pm	2:10pm	4:17pm	3:09pm
9:40pm	3:40pm	6:39pm	1:51pm
10:51pm	4:30pm	8:86pm	*11:00am

Equipment—Trips 3, 4, 12 and 15 Stinson "A"; 1 and 2 Stinson "U"; Buffalo-Chicago Douglas

CHICAGO—CINCINNATI—WASHINGTON—NEW YORK

EASTBOUND Read Down			WESTBOUND Read Up				
No. 2 Daily	No. 4 Daily	No. 6 Daily	Mls.	TABLE 9	No. 3 Daily	No. 1 Daily	No. 5 Daily
	2:15pm	*11:15am	0	Lv CHICAGO (C.T.)	1:42pm		7:27pm
	3:18pm	12:20pm	162	AR Indianapolis	12:37pm		*6:16pm
	3:23pm	12:25pm	162	Lv Indianapolis	12:32pm		6:11pm
	5:07pm	2:11pm	271	AR CINCINNATI (E.T.)	12:45pm		6:20pm
	2:15pm	2:23pm	271	Lv CINCINNATI	-		5:47pm
	3:21pm	-	424	Lv Charleston	-		4:25pm
	4:19pm	-	533	Lv Elkins	-		3:18pm
	5:22pm	4:51pm	683	AR WASHINGTON	-		1:45pm
	6:50pm	6:50pm		AR New York (EAL) (Newark)	-		12:10pm

Equipment—Trips 1 and 2 Stinson "A"; trips 3 and 4 Vultees; trips 5 and 6 Douglas. Stewardesses on trips 5 and 6.

NEW YORK—ALBANY—MONTREAL

NORTHBOUND Read Down			SOUTHBOUND Read Up				
A.A. No. 3 Daily	A.A. No. 15 Daily	No. 2 #	Mls.	TABLE 10	A.A. No. 1 Daily	A.A. No. 4 Daily	A.A. No. 12 Daily
	3:30pm	9:40am	0	Lv NEW YORK (E.T.)	5:30pm	12:49pm	6:45pm
	4:35pm	10:45am	142	AR Albany	4:00pm	11:49am	5:45pm
		9:55am	142	Lv Albany	3:45pm		
		10:05am	342	AR MONTREAL	2:30pm		
		11:20am					

Equipment—Trips 3, 4, 12 and 15 Stinson "A"; 1 and 2 Stinson "U" New York-Albany; Vultees Albany-Montreal.

For explanation of reference marks see page 5.



GENERAL SALES OFFICE:

MELVIN D. MILLER.....General Sales Manager
 CHARLES A. RHEINSTROM.....Asst. General Sales Manager
 ROGERS M. COMBS, JR.....Sales Promotion Manager

6240 So. Kedzie Ave., Chicago

CABLE ADDRESS: AMAIR

GLENN G. JURY.....Transportation Manager
 R. S. MAUGHAM.....Manager-Air Mail and Express

INFORMATION—RESERVATIONS—TICKETS

ABILENE, TEXAS.....Reservations, Municipal Airport.....Tel. 7021
 Ticket Office, Hilton Hotel Lobby.....Tel. 3261
AKRON, OHIO.....Reservations, Municipal Airport.....Tel. Jefferson 5151
ALBANY, N. Y......Reservations, Albany Airport.....Tel. 2-4466 or 2-4467
 Ticket Office, 83 State Street.....Tel. 5-2141
ANN ARBOR, MICH......Airlines Ticket Office, 12 Nickels Arcade.....Tel. 6040
 Passenger Terminal, Municipal Airport.....Tel. 9270
BATTLE CREEK, MICH......Ticket Office, Auto Club.....Tel. 2-5121
 Passenger Terminal, Kellogg Airport.....Tel. 2-3914
BIG SPRINGS, TEXAS.....Passenger Terminal, American Airlines Field.....Tel. 1160
BOSTON, MASS......Reservations, Boston Airport.....Tel. East Boston 2040
 Ticket Office, 140 Federal St.....Tel. Liberty 6233
BRISTOL, VA......Passenger Terminal, Bristol Airport.....Tel. Bristol 1776
BUFFALO, N. Y......Reservations, Buffalo Airport.....Tel. Fillmore 4044
 Traffic Office, Statler Hotel.....Tel. Washington 3861
CAMDEN, N. J......Terminal Office, Central Airport.....Tel. 5690
CHARLESTON, W. VA......Ticket Office, Lobby Union Bldg.....Tel. Capitol 27-271
 Passenger Terminal, Wertz Field.....Tel. South 4523
CHICAGO, ILL......Reservations, Municipal Airport.....Tel. Hemlock 5000
 Ticket Office, 312 S. Michigan Ave.....Tel. Harrison 2627
 Ticket Office, Board of Trade Bldg., 145 W. Jackson Blvd.
 Telephone Harrison 1177
CINCINNATI, OHIO.....Reservations, Lunken Airport.....Tel. East 4700
 Ticket Office, Gibson Hotel Lobby.....Tel. Parkway 2171
 Traffic Office, 2304 Union Central Bldg.....Tel. Cherry 6052
CLEVELAND, OHIO.....Ticket Office, 1915 East Ninth.....Tel. Cherry 3900
 Passenger Terminal, Cleveland Airport, Tel. Clearwater 3300
COLUMBUS, OHIO.....Ticket Office, 20 E. Broad Street.....Tel. Main 3303
 Pass. Terminal, Port Columbus Airport—Evergreen 4618
CORNING, N. Y......Pass. Term. (Elmira), American Airlines Field,
 Tel. Elmira 4568
DALLAS, TEXAS.....Ticket Office, 1404 Commerce St.....Tel. 2-8747
 Passenger Terminal, Love Field.....Tel. 5-3181
DETROIT, MICH......Reservations, City Airport.....Tel. Pingree 7000
 Ticket Office, 202 Book Bldg.....Tel. Cadillac 5221
DOUGLAS, ARIZ......Passenger Terminal, International Airport.....Tel. 160
EAST ST. LOUIS, ILL......Pass. Ter. Curtiss-Steinberg Airport.....Tel. Bridge 8700
ELKINS, W. VA......Passenger Terminal, Municipal Airport.....Tel. 223
ELMIRA, N. Y......Pass. Terminal, American Airlines Field.....Tel. 4585
EL PASO, TEXAS.....Reservations, American Airlines Field.....Tel. Main 221
 Ticket Office, Hilton Hotel.....Tel. Main 290
FT. WORTH, TEXAS.....Reservations, Meacham Field.....Tel. 6-1183
 Ticket Office, Texas Hotel.....Tel. 2-7218
HARTFORD, CONN......Passenger Terminal, Rentschler Field.....Tel. 8-4133
HONOLULU, HAWAII.....Inter-Island Steam Navigation Co. Ltd.,
 Fort and Merchant Street, Tel. 4941
INDIANAPOLIS, IND......Ticket Office, Claypool Hotel Lobby.....Tel. Riley 5542
 Passenger Terminal, Municipal Airport, Tel. Belmont 4979
JACKSON, MICH......Passenger Terminal, Reynolds Airport.....Tel. 5275
KALAMAZOO, MICH......Passenger Terminal, Municipal Airport.....Tel. 7342
KNOXVILLE, TENN......Terminal Office, Island Airport.....Tel. 2-2218
LITTLE ROCK, ARK......Reservations, Municipal Airport.....Tel. 6822
 Ticket Office, Albert Pike Hotel.....Tel. 5211

LOS ANGELES, CALIF......Ticket Office, 512 West 6th Street.....Tel. Michigan 4331
 Hollywood Ticket Office, 6733 Hollywood Blvd.
 Tel. Granite 2616
 Passenger Terminal, Grand Central Air Terminal, Glendale,
 Calif., Tel. Omaha 3-4427
LOUISVILLE, KY......Reservations, Kentucky Hotel.....Tel. Wabash 2813
 Passenger Terminal, Bowman Field.....Tel. Highland 4600
LYNCHBURG, VA......Passenger Terminal, Preston Glenn Airport.....Tel. 57-F-11
MEMPHIS, TENN......Reservations, Municipal Airport.....Tel. 3-2340
 Ticket Office, Hotel Peabody.....Tel. 8-3245
MEXICO CITY, MEX......Ticket Office, Av. Madero No. 14
 Tel. Eric 2-93-90 or Mex L31-00
MILWAUKEE, WIS......Ticket Office, 203 East Wisconsin.....Tel. Daly 6668
MINNEAPOLIS, MINN......95 So. 7th St.....Tel. Atlantic 2289
MONTREAL, QUE., CAN......Reservations, Hotel Mount Royal.....Tel. Plateau 2501
 Passenger Terminal, St. Hubert Airport, Tel. Longueuil 525
 Ticket Office, Hermitage Hotel.....Tel. 6-0915
NASHVILLE, TENN......Passenger Terminal, Sky Harbor Airport.....Tel. 6-2211
 Passenger Terminal, Newark Airport.....Tel. Market 3-2970
NEWARK, N. J......Pass. Term., Municipal Airport.....Tel. New Haven 4-1500
NEW HAVEN, CONN......Reservations, 45 Vanderbilt Ave.....Tel. VAnderbilt 3-2580
NEW YORK, N. Y......Passenger Terminal, Newark Airport.....Tel. Market 3-2970
 Ticket Office, 204 N. Broadway.....Tel. 3-4214
OKLAHOMA CITY, OKLA......Passenger Terminal, Oklahoma City Airport.....Tel. 3-7308
PEORIA, ILLINOIS.....Ticket Office, Pere Marquette Hotel.....Tel. 4-5070
 Passenger Terminal, Peoria Airport.....Tel. 5322
PHILADELPHIA, PA......Ticket Office, 1339 Walnut St.....Pennyacker 5750
 Central Airport (Camden, N. J.).....Tel. Camden 5690
PHOENIX, ARIZ......Ticket Office, 17 E. Jefferson St.....Tel. 3-5609 or 4-3506
 Passenger Terminal, Sky Harbor Airport.....Tel. 3-7476
PITTSBURGH, PA......Air Travel Bureau, William Penn Hotel.....Tel. Grant 6100
ROANOKE, VA......Terminal Office, Municipal Airport.....Tel. 2-7021
ROCHESTER, N. Y......Ticket Office, 4 Stone St.....Tel. Stone 2408
 Passenger Terminal, Rochester Airport, Tel. Genesee 4066
ROME, N. Y......Passenger Terminal, Utica Airport.....Tel. 6319
ST. LOUIS, MO......Reservations, Lambert Field.....Tel. Winfield 1811
 Ticket Office, 1201 Locust St.....Tel. Garfield 5303
SAN DIEGO, CAL......J. K. Polk Gen'l Agency, 232 Broadway, Tel. Franklin 3252
SAN FRANCISCO, CALIF......Kenneth Ward Gen'l Agency, 233 Post St.....Garfield 4787
SCHENECTADY, N. Y......Passenger Terminal, Albany Airport—Schenectady 2-2728
SCRANTON, PA......Pass. Term., Scranton Airport.....Tel. Clark's Summit 333
SOUTH BEND, IND......Passenger Terminal, Bendix Airport.....Tel. 3-8151
SPRINGFIELD, ILL......Passenger Terminal, Springfield Airport.....Tel. Main 864
SPRINGFIELD, MO......Passenger Terminal, Municipal Airport.....Tel. 1883
SYRACUSE, N. Y......Ticket Office, 225 S. State St.....Tel. 6-1629
 Passenger Terminal, Syracuse Airport.....Tel. 6-2131
TUCSON, ARIZ......Ticket Office, 107 So. Scott Street.....Tel. 911
 Passenger Terminal, Tucson Airport.....Tel. 2868
TULSA, OKLA......Ticket Office, Philtower Arcade.....Tel. 2-5209
 Passenger Terminal, Municipal Airport.....Tel. 6-4958
UTICA, N. Y......Passenger Terminal, Utica Airport.....Tel. 6319
WASHINGTON, D. C......Reservations, Washington Airport.....Tel. NATIONAL 0442
 Ticket Office, 813 15th Street, N. W.....Tel. NATIONAL 4108
YOUNGSTOWN, OHIO.....L. B. Burger Travel Service, 39 N. Phelps Ave., Tel. 7-5141

— ALSO —

The Transportation Desk of Leading Hotels; American Express; "Ask Mr. Foster Travel Service"; Thos. Cook & Son and other Travel Bureaus.

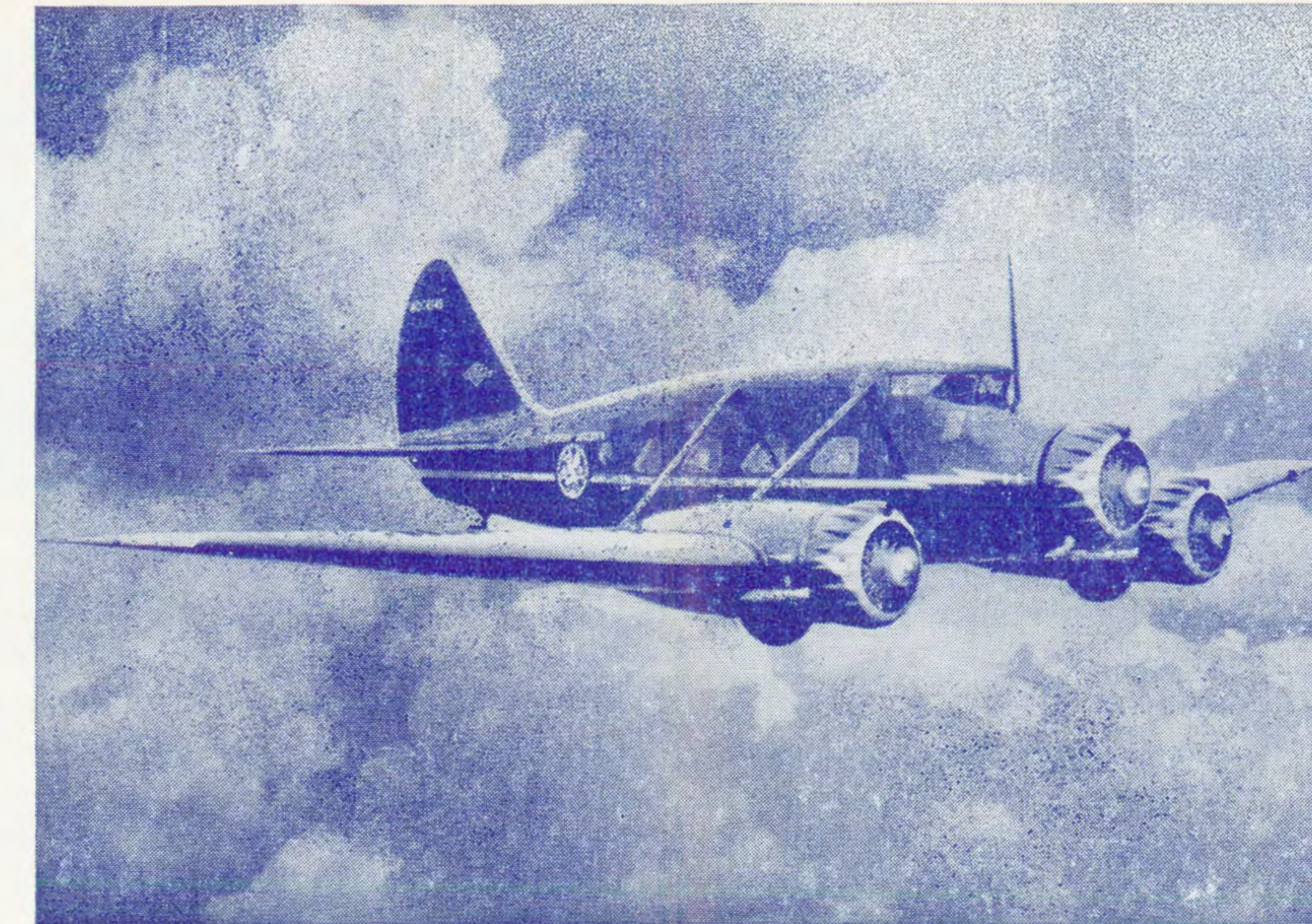
Postal Telegraph and Western Union Offices — Reservations may be made by telephone; uniformed messenger will deliver ticket order and collect air fare without extra charge within city limits.

TRANSPORTATION TO AND FROM AIRPORTS

If Ground Transportation is desired passenger must inform Ticket Agent at time reservation is made.

City	Starting Point	Running Time	Fare	City	Starting Point	Running Time	Fare
ABILENE, TEXAS	Downtown business district	15 minutes	50c	NASHVILLE, TENN.	Hermitage Hotel	50 minutes	75c
ALBANY, N. Y.	83 State Street	30 minutes	\$1.00	NEWARK, N. J.	Downtown business district	20 minutes	50c
BIG SPRING, TEXAS	Downtown business district	10 minutes	150c	NEW HAVEN, CONN.	Downtown business district	25 minutes	▲\$1.00
BOSTON, MASS.	140 Federal Street	25 minutes	50c	NEW YORK, N. Y.	45 Vanderbilt Ave.	60 minutes	\$1.00
BRISTOL, VA.	Downtown Hotels	20 minutes	50c		New Yorker Hotel	45 minutes	\$1.00
BUFFALO, N. Y.	Statler Hotel	40 minutes	75c	OKLAHOMA CITY, OKLA.	204 N. Broadway	40 minutes	75c
CHARLESTON, W. VA.	Principal downtown hotels	45 minutes	75c	PALM SPRINGS, CALIF.	Desert Inn and El Mirador	45 minutes	\$2.00
CHICAGO, ILL.	312 So. Michigan Ave.	50 minutes	75c	PEORIA, ILL.	Downtown business district	25 minutes	50c
CINCINNATI, OHIO	Gibson Hotel	40 minutes	50c	PHILADELPHIA, PA.	1339 Walnut St.	30 minutes	75c
CLEVELAND, OHIO	Downtown business district	40 minutes	75c	PHOENIX, ARIZ.	Downtown business district	15 minutes	50c
COLUMBUS, OHIO	Principal downtown hotels	45 minutes	75c	ROCHESTER, N. Y.	Downtown business district	25 minutes	60c
DALLAS, TEXAS	Downtown business district	30 minutes	50c	ST. LOUIS, MO.	Jefferson Hotel	50 minutes	\$1.00
DETROIT, MICH.	Airlines Ticket Office	35 minutes	50c	SCRANTON, PA.	Downtown business district	35 minutes	\$1.00
DOUGLAS, ARIZ.	Downtown business district	10 minutes	\$1.00	SOUTH BEND, IND.	Downtown business district	15 minutes	40c
ELMIRA, N. Y.	Downtown business district	25 minutes	50c	SPRINGFIELD, ILL.	Downtown business district	25 minutes	50c
EL PASO, TEXAS	Downtown business district	25 minutes	75c	SPRINGFIELD, MO.	Downtown business district	15 minutes	25c
FT. WORTH, TEXAS	Downtown business district	30 minutes	50c	SYRACUSE, N. Y.	Downtown business district	30 minutes	75c
HARTFORD, CONN.	Downtown business district	25 minutes	▲\$1.00	TUCSON, ARIZ.	Downtown business district	15 minutes	*\$1.00
INDIANAPOLIS, IND.	Principal downtown hotels	35 minutes	75c	TULSA, OKLA.	Principal downtown hotels	30 minutes	50c
KNOXVILLE, TENN.	Downtown business district	20 minutes	50c	UTICA, N. Y.	Principal downtown hotels	25 minutes	\$1.00
LITTLE ROCK, ARK.	Principal downtown hotels	10 minutes	50c	WASHINGTON, D. C.	Downtown business district	20 minutes	50c
LOS ANGELES, CALIF.	Biltmore Hotel	45 minutes	75c				
LOUISVILLE, KY.	Kentucky Hotel	35 minutes	75c				
LYNCHBURG, VA.	Downtown business district	20 minutes	50c				
MEMPHIS, TENN.	Hotel Peabody	40 minutes	75c				
MONTREAL, QUE.	Mount Royal Hotel	45 minutes	\$1.00				

*—\$1.00 for one or two; 50c for each additional passenger.
 ▲—Approximate fare—pay meter rate. ○—American Airlines Limousine service.
 †—50c for one; two or more 25c each.



NEW SERVICE!...FASTER SERVICE!

WITH AMERICAN'S NEW FLEET OF HIGH-SPEED STINSON "A"s ON THESE FREQUENT-STOP SCHEDULES

BETWEEN THESE CITIES—NEW PLANES, FASTER SCHEDULES TWICE-DAILY SERVICE:

BUFFALO—ROCHESTER—SYRACUSE—UTICA—ALBANY—BOSTON—NEW YORK—...
 BUFFALO - CLEVELAND daily.

Connecting Services:
 From Buffalo, fast frequent flights to Detroit, Chicago, St. Louis, Twin Cities.

From Cleveland to Kentucky, Tennessee, Texas, Arizona, California.

From Albany, air service to Montreal.

From New York, fast flights to Washington, Miami, and the South.

BETWEEN THESE CITIES—NEW PLANES FASTER SCHEDULES:

NEW YORK—SCRANTON—ELMIRA

In addition to this service, American Airlines operates 4 non-stop Douglas flights daily between New York and Buffalo . . . part of its

6-flight service between New York-Chicago.

BETWEEN THESE CITIES—NEW AIR SERVICE, NEW PLANES:

NASHVILLE-KNOXVILLE—BRISTOL—ROANOKE—LYNCHBURG—WASHINGTON

American Airlines' transcontinental "The Southerner" on its regular flights between New York and Los Angeles, connects with this frequent-stop service at Nashville and Washington.

THE STINSON "A"

Like a careful man, shopping for the correct shoe to fit his foot, American Airlines has sought a plane with the exact performance needed for its frequent-stop services . . . and found it in the STINSON "A".

Here is a new, quiet, comfortable 8-passenger ship with the quickest



take-off of any, the fastest climbing ability, the highest speed on short runs at low altitude . . . and a smooth riding quality that contributes notably to the pleasure of flight.

A new fleet of 15 STINSON "A"s has just been put in operation between many intermediate cities on American Airlines' System.

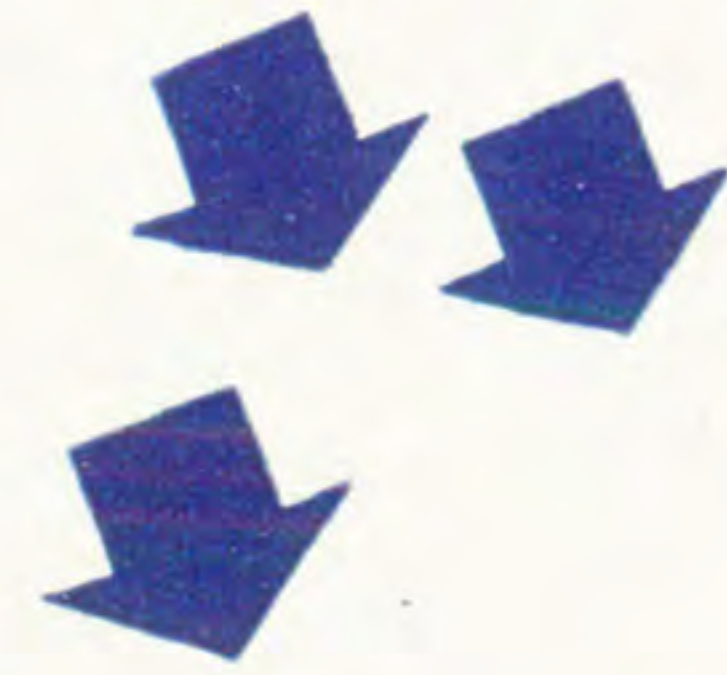
EXTRA

AMERICAN AIRLINES, INC.



EXTRA

NEWS COMMENT ON THE DST



Hundreds of American newspapers have published comment similar to that below . . . complimentary, all, to American Airlines' foresight in purchasing the first 20 of these Douglas Super Transports for use on its popular Southern Transcontinental and its heavily traveled New York-Chicago route.



"The Sleeper Planes thus introduced (by American Airlines) for their first practical operation were viewed at first by other operators with skepticism.

"From the beginning they have proved popular with the traveling public, however, and have paved the way for major developments—that of large, fast pullmans of the air. The first of these, the Douglas DST is already completed . . ."

The New York Times,
December 29, 1935

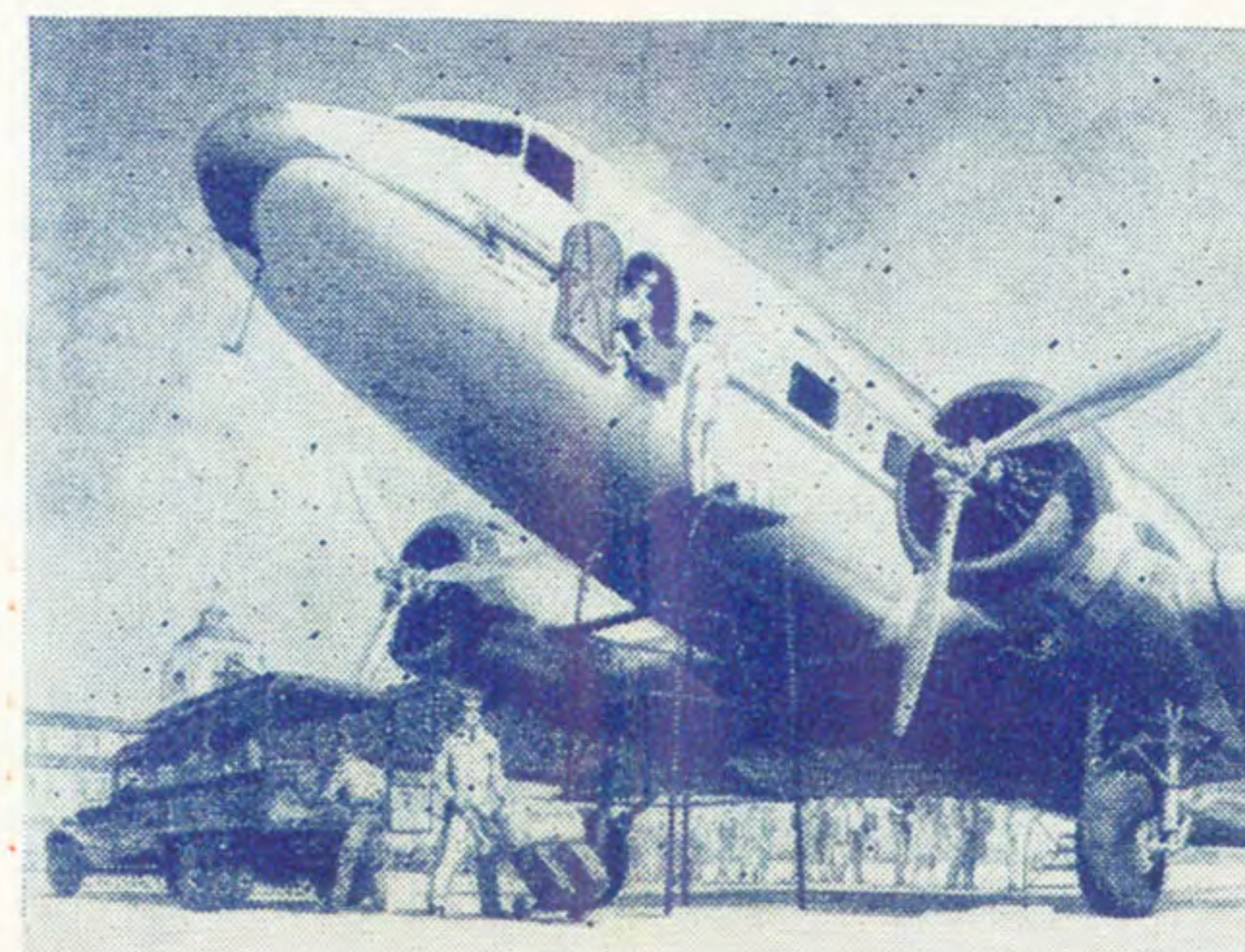


" . . . Months before last week's test flight Mr. C. R. Smith, President of American Airlines, announced that his company had contracted for ten (now 20) of the new model transports.

"Most air transport experts call it a smart move that may put American ahead in Transcontinental passenger traffic next summer . . ."

"To passengers, such ships mean the arrival of a new standard of air travel comfort. To the airlines, they mean an economy in the handling of traffic on heavily traveled routes. "Moreover . . . short cruising range requires frequent refueling stops . . . With 16 passengers they (the DST's) can cover 1400 miles in 7½ hours and do it non-stop at that!"

News-Week, December 28th, 1935



"The first of these ships was test flown this month in Santa Monica . . . may constitute a serious menace to competitors of American Airlines during the coming year, since there is no comparable craft available . . ."

New York Herald Tribune,
December 29, 1935



" . . . American Airlines' DST . . . can fly non-stop from Los Angeles to Ft. Worth. The DC-2 can fly non-stop only from Los Angeles to El Paso . . ."

" . . . Douglas' General Manager, Wetzel, says: It has very distinctive improvements over previous planes; for instance, high altitude oxygen equipment. This is entirely new. The Pilot . . . can fly to 19,000 ft. with no discomfort to passengers, simply by turning on the air line which supplies oxygen into the passenger cabin . . ."

" . . . The propellers have an automatic pitch change designed to take advantage of any change in air conditions . . ."

Chicago Sunday Tribune,
January 5, 1936

Artist's drawing of an American Airlines' DST loading mail and express . . . Note comparative size of men and plane.



THERE'S SAFETY IN FLIGHT

Excerpts from an article published by the **Manufacturers News,** Chicago, December, 1935.

"The airlines have no argument with safety; they already possess it. No other modern improvement in this world is so thoroughly checked, inspected, rechecked and reinspected as a passenger airplane on an organized air line. Nothing is left to chance; that is literally true. So far as is humanly possible on any mechanical contrivance devoted to passenger transportation, there is no possibility of fortuitous accident . . ."

"Unfortunately, the public dramatizes the very infrequent airplane accident, forgets to look into the cold figures of safety as reflected in the attitude of insurance companies, for instance, towards safety in the air . . ."

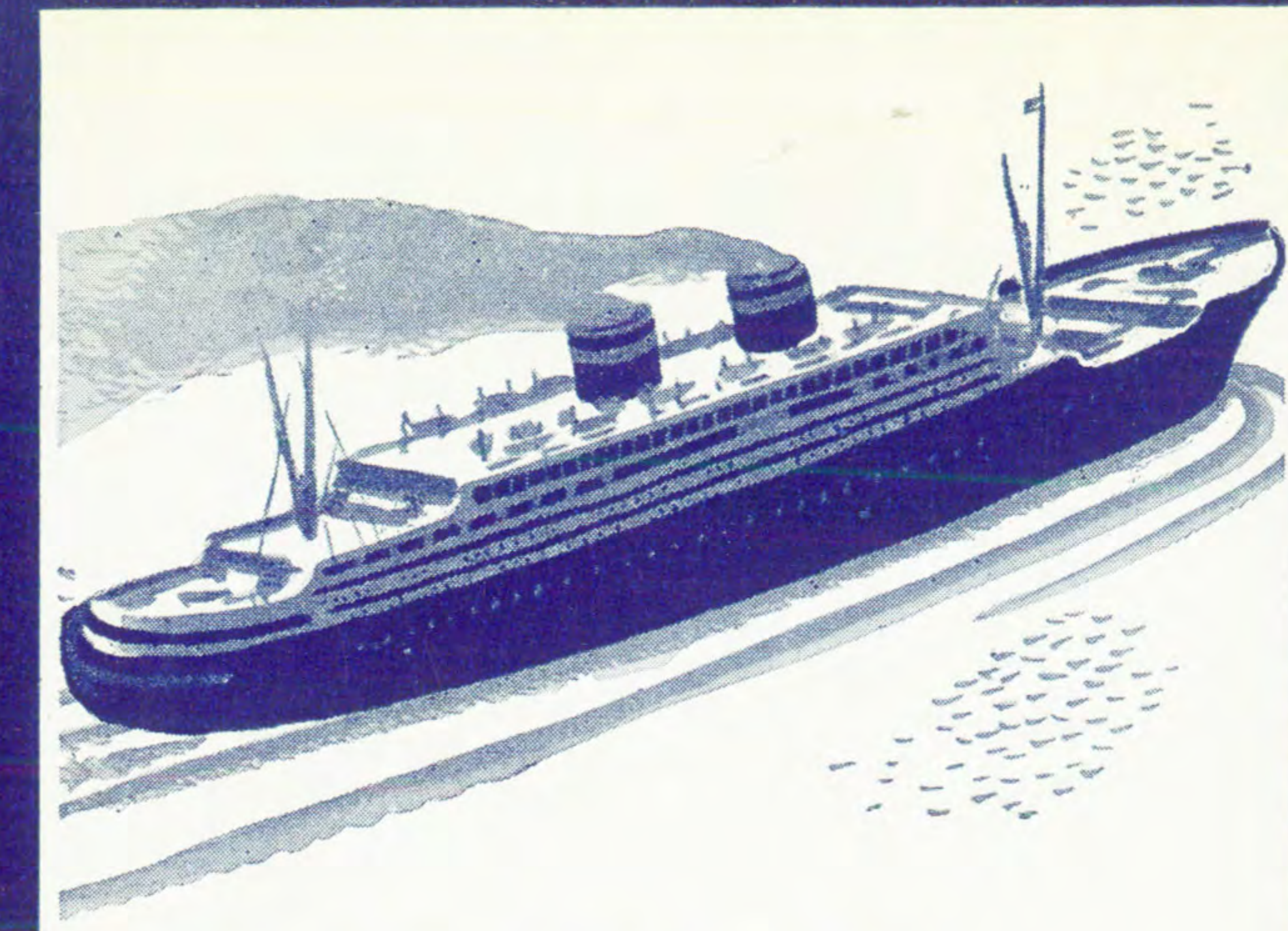
"There seems to be, so far in our social and technical progress, no complete avoidance of accidents. Your own homes still hold the world's record as the place where most accidents occur. People fall off chairs and step-ladders, and in bathtubs, to an astonishing total. It would be distressing and alarming indeed if the casualties of transportation equaled those of staying home and being useful around the house.

"Contrast the safety record of the airplane with that of the automobile, with 24,840 killed in the first nine months of this year, (1935) and remember that the Government's own figures show that you are twice as safe in a regularly scheduled airplane as you are in a privately owned automobile.

"Records of air travel for the first six months of 1935 show that planes of the organized American passenger-carrying fleet traveled 28,729,128 miles in that half year. Passengers carried totaled 377,339, making a passenger-mile total of 162,858,746.

"Individually, passengers traveled 46,714,686 miles without a mishap—practically equal to no less than one hundred round trips to the moon for each air traveler!"

"At 150 miles per hour, a passenger could fly an average of 1,613 days (almost three and one-half years) continuously for twenty-four hours a day, before running the risk of being involved in a fatal accident."



WINGS TO THE SEA

The perfect beginning to a sea holiday: a thrilling air trip from home to port . . . The perfect end to a sea holiday: a quick trip by plane from port to home.

Now, through special arrangement with steamship companies, American Airlines, Inc. offers you this attractive combination service . . . in several cases at a reduction from regular fare.

For further information, call your nearest American Airlines' office . . . or the offices of steamship companies mentioned below:

DOLLAR LINE...PANAMA - PACIFIC LINE...

Now you can fly to New York or Los Angeles, steam from coast-to-coast through the sunny Panama Canal, and fly home . . . all for one special round-trip fare.

Here is an ideal winter holiday with a maximum of pleasure . . . a joyous sea trip to foreign lands, a fast comfortable plane ride by land from home to port to home.

FURNESS-BERMUDA LINE...

Your Bermuda trip starts at your own airport. An American Airliner will whisk you to New York . . . Furness-Bermuda will sail you away to Pleasure Islands for a holiday in the sun. A minimum of effort, a maximum of ease for you in this combination service.

EASTERN STEAMSHIP LINES...

Travel between New York and Boston by plane . . . and return at night in a comfortable stateroom on board the fine Eastern boats, **St. John** or **Acadia**.

. . . Or by plane to New York, then via Eastern Steamship to Norfolk, Va. . . a thrilling air trip and a restful sea voyage in one.

TRANSATLANTIC..TRANSPACIFIC LINES..

To world travelers, American Airlines offers a luxurious, time-saving air service from 57 American cities to the ports of New York, Boston, Los Angeles, Philadelphia . . . through direct connections to the ports of San Francisco, Seattle, Vancouver, New Orleans, and Galveston.

To travelers hurrying home, this service especially appeals.