

# AMERICAN AIRLINES INC.



PHOTO:  
POLLY SMITH



THE ONLY  
SOUTHERN  
TRANSCONTINENTAL  
ROUTE

JANUARY 2, 1937

# AMERICAN AIRLINES INC.



*Happy  
New Year*

★ SYSTEM TIME TABLE EFFECTIVE JAN. 2, 1937

PRINTED IN U. S. A.

CALVERT-HATCH CO.

# AMERICAN AIRLINES INC.



PHOTO  
POLLY SMITH



THE ONLY  
SOUTHERN  
TRANSCONTINENTAL  
ROUTE

JANUARY 2, 1937

**FLY  
ABOVE  
WINTER**



*Service!*

**16 FLAGSHIP FLIGHTS DAILY  
BETWEEN NEW YORK & CHICAGO**

**... 4 OF THEM**

*Non-Stop*

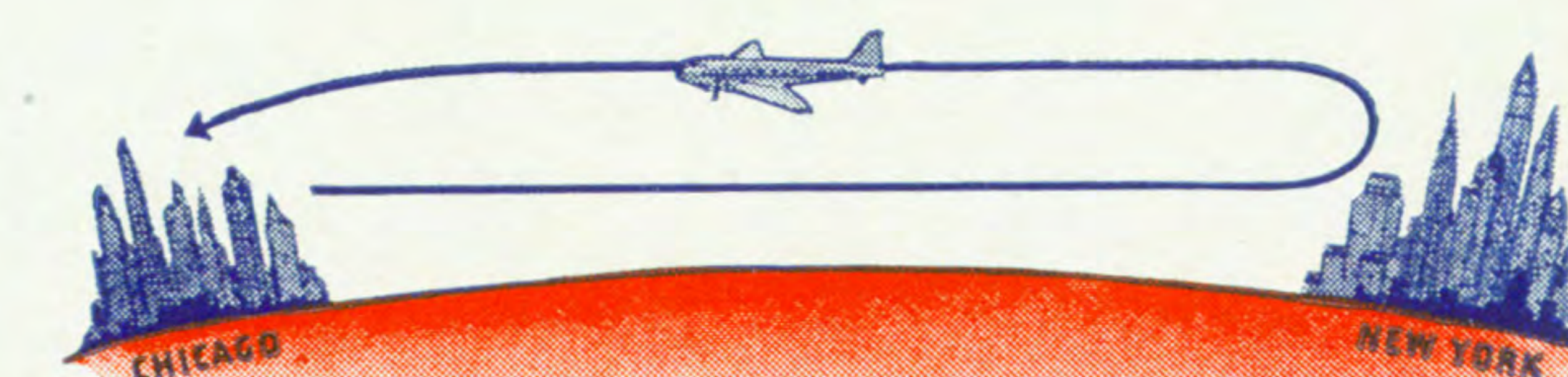
American Airlines' giant Flagship Club Planes—The "Arrow" and The "Eagle", Non-Stop both ways between New York and Chicago, and the six daily trips both ways, New York-Detroit-Buffalo-Chicago—are transporting "blue-ribbon" loads of air travelers.

The patronage of these passengers is a happy confirmation of "American's" judgment that (1) Air travelers prefer "first-class" service (2) Experienced travelers prefer to travel above winter.

These American Airlines passengers have demonstrated their appreciation, too, of the giant Flagships' roomy, warm comfort, their great speed, the security of their record cruising range, and the convenient frequency of their schedules between these major American business cities.

**LONG RANGE ADVANTAGE**—Flagships offer American Airlines' passengers a world's record land transport cruising range: 2000 miles with no need to stop for fuel!... more mileage, non-stop, than a trip from Los Angeles to Chicago, or New York to El Paso!

In establishing this record, on June 21st, 1936, a fully loaded Flagship flew from Chicago to New York and back to Chicago in 8 hours without a stop... and had left a fuel reserve sufficient for two and one-half hours additional flight.





# Sleep overnight from Winter

## "AMERICAN" FLAGSHIP SLEEPER PLANE MAGIC ON THE SOUTHERN TRANSCONTINENTAL ROUTE . . .

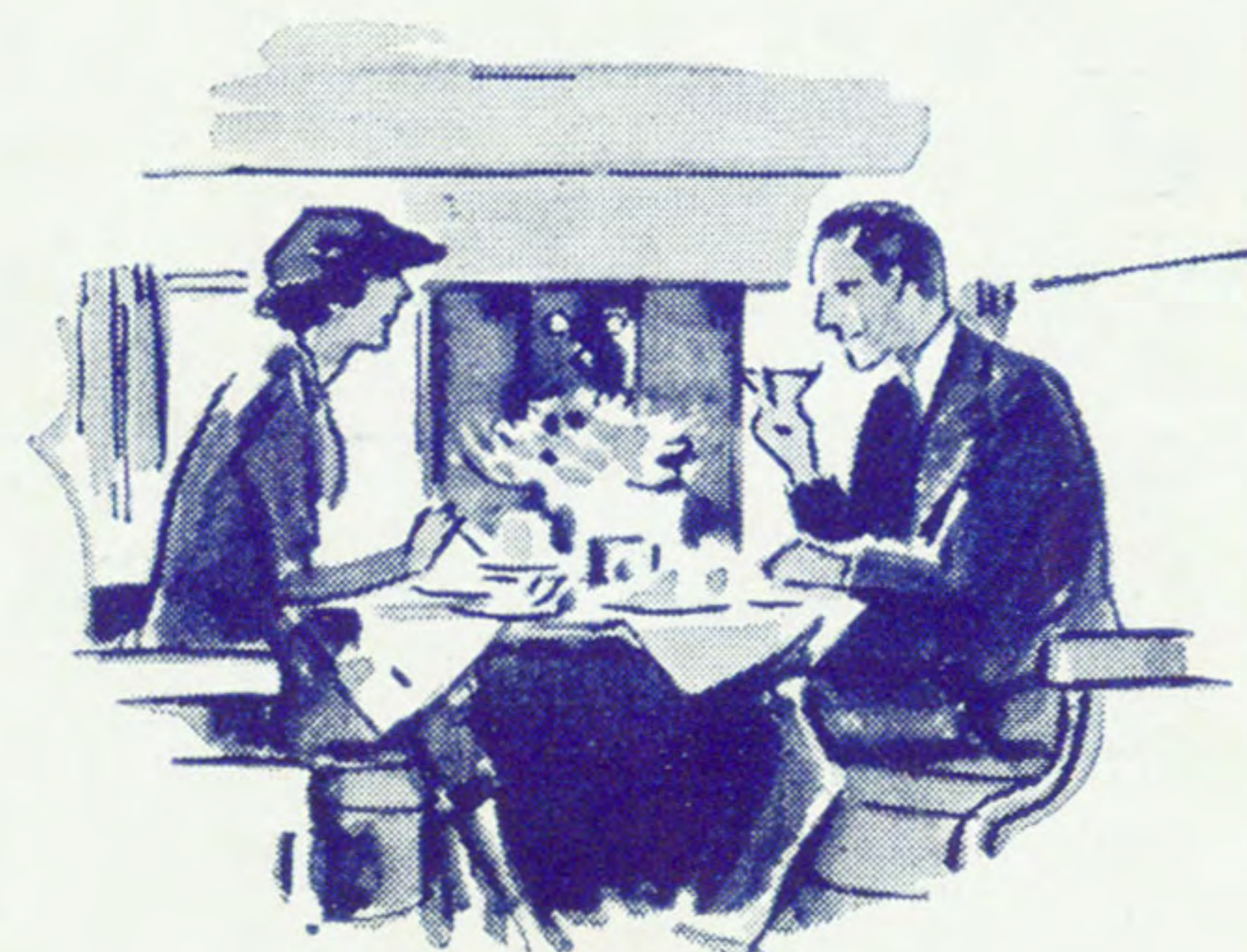
● This brief account describes something like Heaven on Earth . . . the possibility of a quick transition from cold Northern Winter to bright Southwestern Summer. (Overnight, mind you!)

There are no mirrors or sun-lamps involved in this modern miracle.

It is actually possible for you to board a steam-heated American Airlines' Flagship Sleeper this evening in New York (for instance), nestle deep into a soft, roomy berth—and arise with tomorrow's sun in Arizona . . . or arrive at breakfast time in Los Angeles!

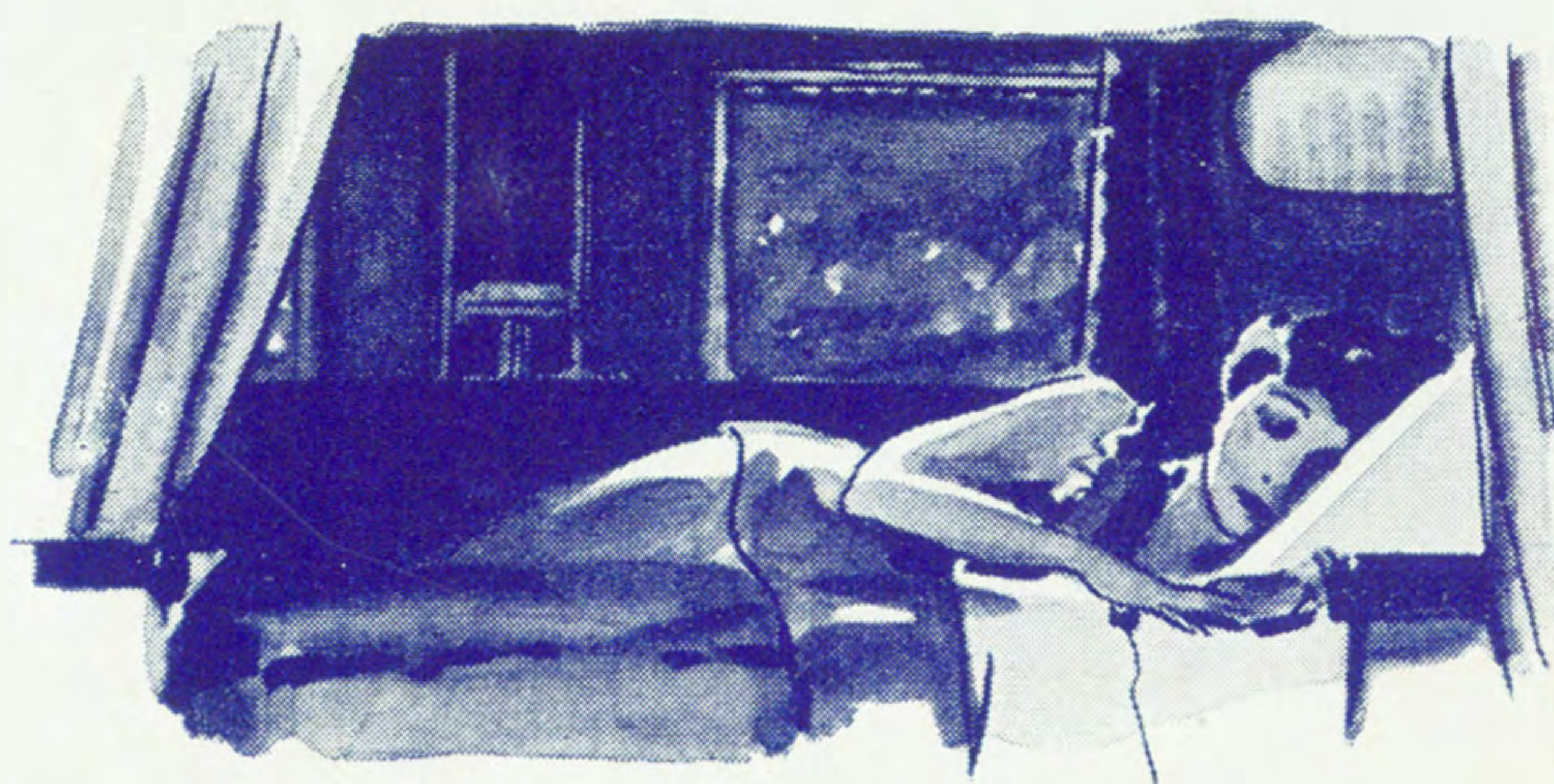
● Between dusk and dawn you may eat a delightful dinner, play bridge, smoke, chat and yawn (the fresh air gets you!). When you yawn, you will undress and retire to your comfortable bed to read . . . until deep, sweet sleep puts an end to such time-wasting.

A thousand miles later you will awake refreshed, to wash, shave, and dress in the 4-room service section (separate dressing rooms and lavatories for men and women) and then eat a pleasant breakfast before greeting the Summer Sun at your destination.

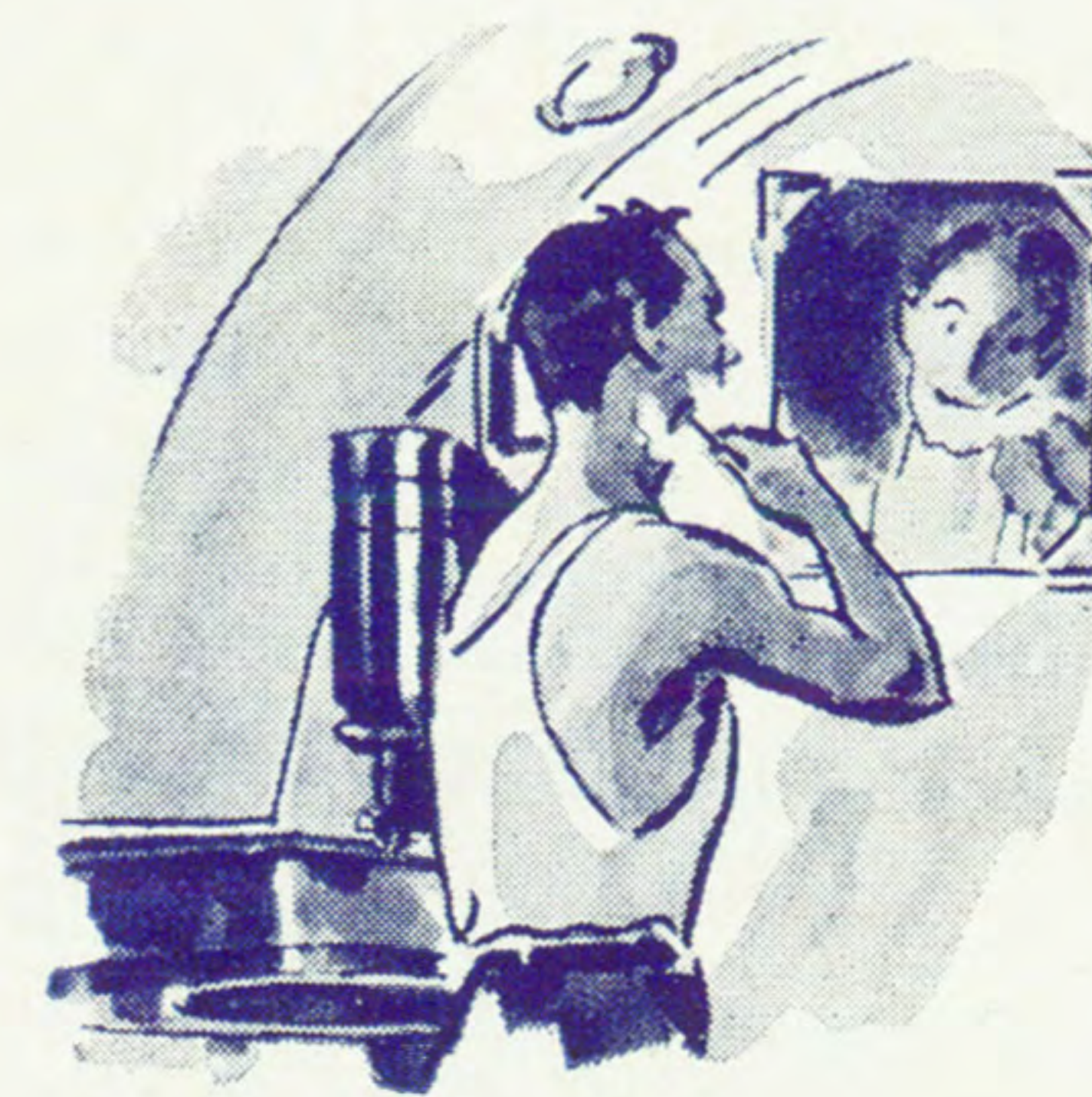


Sounds simple . . . and it is. Sounds simply wonderful . . . and it is!—as thousands of American Airline passengers will attest.

● If your time is limited, please consider what air travel can do for you: With a two-weeks' holiday at hand, you can enjoy **14 days vacation** in the Sun Country of the Southwest . . . without hurry or fuss, without losing a night's sleep! This surprising fact



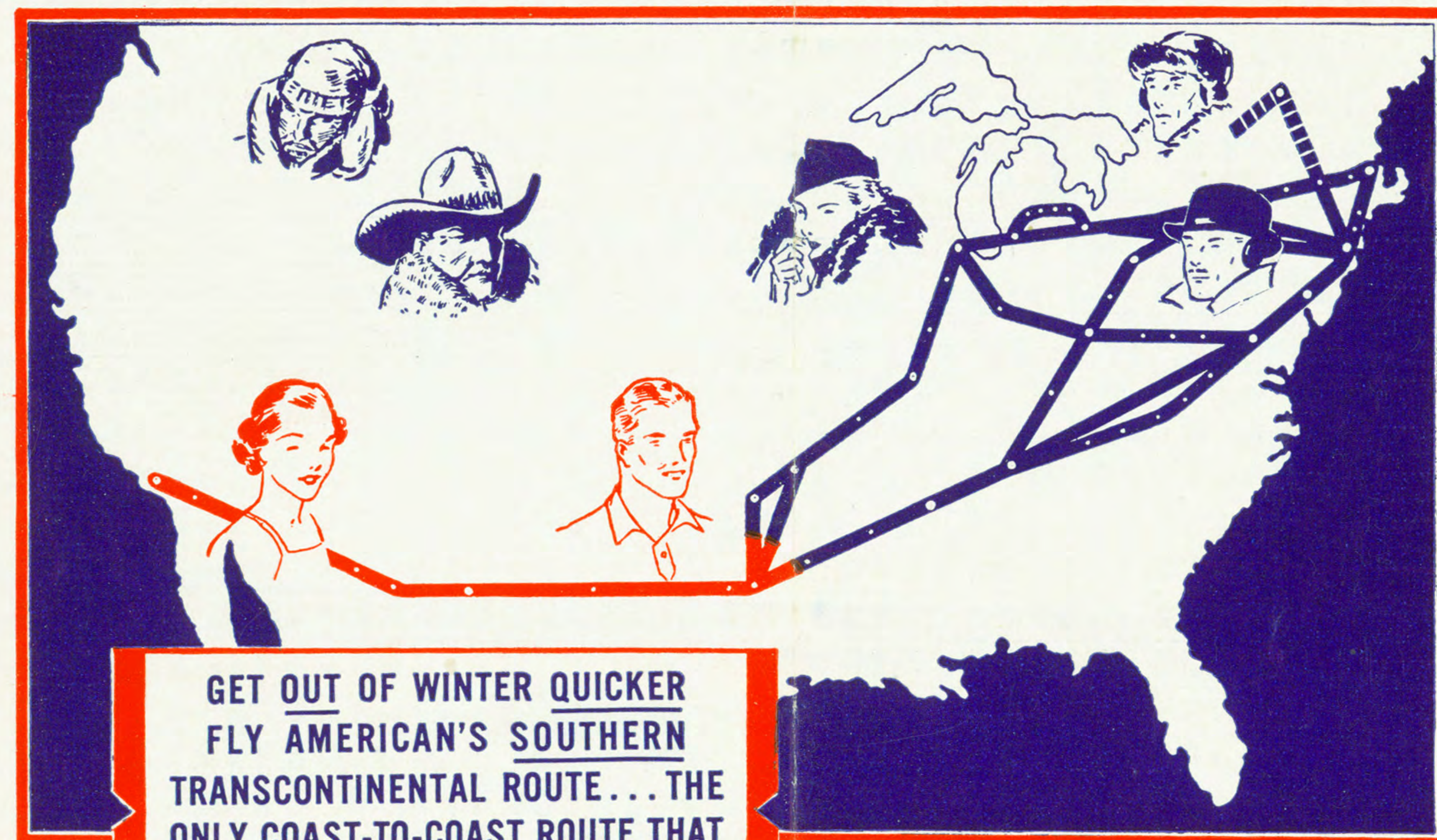
# to Summer in the Sun Country



applies to service from even the most distant city in American Airlines' vast system (see map below . . . and on page 11).

● If you want the benefits of the Sun Country, and want them most quickly and extensively, please see your travel agent about departure times and fares. Or just call your local office of American Airlines, Inc.

Write for descriptive folder, "The Sun Country": American Airlines, Inc., Municipal Airport, Chicago, Ill.



**GET OUT OF WINTER QUICKER  
FLY AMERICAN'S SOUTHERN  
TRANSCONTINENTAL ROUTE . . . THE  
ONLY COAST-TO-COAST ROUTE THAT  
ENABLES YOU TO FLY MOST OF THE  
WAY "IN SUMMER" IN WINTER**

# EXAMPLES OF PASSENGER FARES

For fares not shown call any American Airlines office or your transportation agent

Passenger Fares Shown are From Airport To Airport	Albany, N. Y.	Boston, Mass.	Buffalo, N. Y.	Chicago, Ill.	Cincinnati, Ohio	Cleveland, Ohio	Detroit, Mich.	Ft. Worth, or Dallas, Texas	Indianapolis, Indiana	Little Rock, Ark.	Los Angeles, Calif.	Memphis, Tenn.	Montreal, P. Q.	Nashville, Tenn.	New York, N. Y.	Oklahoma City, Okla.	Phoenix, Ariz.	St. Louis, Mo.	San Francisco, Calif.	Tucson, Ariz.	Tulsa, Okla.	Washington, D. C.
Albany, N. Y. OW	11.40	16.84	28.50	42.85	41.65	27.60	29.59	94.80	78.90	157.85	71.10	14.40	58.10	9.00	84.30	146.25	56.80	157.85	142.80	77.80	21.20	
Albany, N. Y. RT	<b>20.50</b>	<b>30.32</b>	<b>42.85</b>	<b>77.10</b>	<b>74.95</b>	<b>49.65</b>	<b>53.27</b>	<b>170.60</b>	<b>142.00</b>	<b>284.10</b>	<b>127.90</b>	<b>25.90</b>	<b>104.55</b>	<b>16.20</b>	<b>151.70</b>	<b>263.25</b>	<b>102.20</b>	<b>284.10</b>	<b>257.00</b>	<b>140.00</b>	<b>38.15</b>	
Baltimore, Md. OW	18.85	23.75	28.50	38.35	28.25		40.45	76.80	33.10	60.50	150.10	52.25	33.25	39.10	9.85	79.80	137.10	52.30	150.10	130.20	73.30	2.35
Baltimore, Md. RT	<b>33.90</b>	<b>42.70</b>	<b>51.30</b>	<b>69.00</b>	<b>50.80</b>		<b>72.81</b>	<b>138.20</b>	<b>59.55</b>	<b>108.85</b>	<b>270.15</b>	<b>94.00</b>	<b>59.80</b>	<b>70.35</b>	<b>17.70</b>	<b>143.60</b>	<b>246.75</b>	<b>94.10</b>	<b>270.15</b>	<b>234.30</b>	<b>131.90</b>	<b>4.20</b>
Boston, Mass. OW	11.40		28.21	54.20	52.00	38.95	40.96	100.50	56.25	84.25	169.20	76.00	20.90	62.85	13.90	95.65	157.60	68.15	169.20	154.00	89.15	26.10
Boston, Mass. RT	<b>20.50</b>		<b>50.78</b>	<b>77.10</b>	<b>74.95</b>	<b>49.65</b>	<b>53.27</b>	<b>170.60</b>	<b>142.00</b>	<b>284.10</b>	<b>127.90</b>	<b>25.90</b>	<b>104.55</b>	<b>16.20</b>	<b>151.70</b>	<b>263.25</b>	<b>102.20</b>	<b>284.10</b>	<b>257.00</b>	<b>140.00</b>	<b>38.15</b>	
Buffalo, N. Y. OW	16.84	28.21		26.00	24.80	10.75	12.75	77.95	30.29	62.04	141.00	54.43	28.99	41.26	21.95	67.45	129.41	39.95	141.00	125.96	60.95	28.50
Buffalo, N. Y. RT	<b>30.32</b>	<b>50.78</b>		<b>46.80</b>	<b>44.64</b>	<b>19.35</b>	<b>22.95</b>	<b>140.31</b>	<b>54.53</b>	<b>111.68</b>	<b>253.80</b>	<b>97.98</b>	<b>52.13</b>	<b>74.27</b>	<b>39.51</b>	<b>121.41</b>	<b>232.94</b>	<b>71.91</b>	<b>253.80</b>	<b>277.20</b>	<b>109.71</b>	<b>51.30</b>
Chicago, Ill. OW	42.85	54.20	26.00		16.00		13.25	51.95	10.50	39.25	115.00	31.00	55.00	26.70	47.95	41.45	103.40	13.95	115.00	99.95	34.95	36.00
Chicago, Ill. RT	<b>77.10</b>	<b>97.55</b>	<b>46.80</b>		<b>28.80</b>		<b>23.85</b>	<b>93.50</b>	<b>18.90</b>	<b>70.65</b>	<b>207.00</b>	<b>55.80</b>	<b>99.00</b>	<b>48.05</b>	<b>86.30</b>	<b>74.60</b>	<b>186.10</b>	<b>25.10</b>	<b>207.00</b>	<b>179.90</b>	<b>62.90</b>	<b>64.80</b>
Cincinnati, Ohio OW	41.65	52.00	24.80	16.00		14.05	18.60	57.05	5.50	37.85	122.50	29.60	53.80	16.45	38.10		111.95	29.95	130.00	108.50	50.95	25.90
Cincinnati, Ohio RT	<b>74.95</b>	<b>93.50</b>	<b>44.64</b>	<b>28.80</b>		<b>25.25</b>	<b>33.48</b>	<b>102.65</b>	<b>9.90</b>	<b>68.10</b>	<b>220.50</b>	<b>53.25</b>	<b>96.80</b>	<b>29.60</b>	<b>68.55</b>		<b>201.50</b>	<b>53.90</b>	<b>234.00</b>	<b>195.30</b>	<b>91.70</b>	<b>46.60</b>
Cleveland, Ohio OW	27.60	38.95	10.75		14.05		69.10	19.55	51.90	130.00	43.70	39.75	30.50	29.70	58.60	118.40	31.10	130.00	114.95	52.10		
Cleveland, Ohio RT	<b>49.65</b>	<b>70.10</b>	<b>19.35</b>		<b>25.25</b>		<b>124.35</b>	<b>35.15</b>	<b>93.40</b>	<b>234.00</b>	<b>78.65</b>	<b>71.55</b>	<b>54.90</b>	<b>53.45</b>	<b>105.45</b>	<b>213.10</b>	<b>55.95</b>	<b>234.00</b>	<b>206.90</b>	<b>93.75</b>		
Dallas, Texas or Ft. Worth, Texas OW	94.80	100.50	77.95	51.95	57.05	69.10	65.20	2.50	59.00	19.20	77.50	27.40	106.95	40.55	86.60	12.50	60.30	38.00	96.45	53.40	17.00	74.45
Dallas, Texas or Ft. Worth, Texas RT	<b>170.60</b>	<b>180.90</b>	<b>140.31</b>	<b>93.50</b>	<b>102.65</b>	<b>117.36</b>	<b>4.50</b>	<b>106.20</b>	<b>34.55</b>	<b>139.50</b>	<b>49.30</b>	<b>192.50</b>	<b>73.00</b>	<b>155.85</b>	<b>22.50</b>	<b>108.50</b>	<b>68.40</b>	<b>173.60</b>	<b>96.10</b>	<b>30.60</b>	<b>134.00</b>	
Detroit, Mich. OW	29.59	40.96	12.75	13.25	18.60		65.20	23.76	49.29	128.25	44.23	41.74	33.90	34.70	54.70	116.66	27.20	128.25	113.21	48.20		
Detroit, Mich. RT	<b>53.27</b>	<b>73.73</b>	<b>22.95</b>	<b>23.85</b>	<b>33.48</b>		<b>117.36</b>	<b>42.77</b>	<b>88.73</b>	<b>230.55</b>	<b>79.62</b>	<b>75.14</b>	<b>61.02</b>	<b>62.46</b>	<b>98.46</b>	<b>209.99</b>	<b>48.96</b>	<b>230.55</b>	<b>203.78</b>	<b>86.76</b>		
El Paso, Texas OW	129.15	134.85	112.32	86.30	91.40	103.45	99.57	34.35	93.35	53.55	49.10	61.75	141.30	74.90	120.95	46.85	25.95	72.35	68.05	19.05	51.35	108.80
El Paso, Texas RT	<b>232.45</b>	<b>242.70</b>	<b>202.18</b>	<b>156.30</b>	<b>164.59</b>	<b>186.20</b>	<b>179.23</b>	<b>61.80</b>	<b>168.00</b>	<b>96.35</b>	<b>88.35</b>	<b>111.15</b>	<b>254.30</b>	<b>134.80</b>	<b>217.70</b>	<b>84.30</b>	<b>46.70</b>	<b>130.20</b>	<b>122.45</b>	<b>34.25</b>	<b>92.40</b>	<b>195.80</b>
Hartford, Conn. OW	6.55	22.35	48.35	45.50	33.10		35.10	94.00	49.75	77.70	163.35	69.50		56.30	7.40	89.80	151.75	62.30	163.35	147.50	83.30	19.60
Hartford, Conn. RT	<b>11.75</b>	<b>40.23</b>	<b>87.00</b>	<b>81.90</b>	<b>59.55</b>		<b>63.18</b>	<b>169.20</b>	<b>89.55</b>	<b>139.85</b>	<b>294.00</b>	<b>125.10</b>		<b>101.30</b>	<b>13.30</b>	<b>161.60</b>	<b>273.15</b>	<b>112.10</b>	<b>230.80</b>	<b>265.50</b>	<b>149.90</b>	<b>35.20</b>
Los Angeles, Calif. OW	157.85	169.20	141.00	115.00	122.50	130.00	128.25	77.50	125.50	96.70		104.10	170.00	115.30	160.00	88.00	23.15	103.00		30.05	94.50	147.75
Los Angeles, Calif. RT	<b>284.10</b>	<b>304.55</b>	<b>253.80</b>	<b>207.00</b>	<b>220.50</b>	<b>234.00</b>	<b>230.85</b>	<b>139.50</b>	<b>225.90</b>	<b>174.05</b>		<b>187.35</b>	<b>306.00</b>	<b>207.50</b>	<b>288.00</b>	<b>158.40</b>	<b>41.65</b>	<b>185.40</b>		<b>54.05</b>	<b>170.10</b>	<b>265.95</b>
Louisville, Ky. OW	47.60	57.95	30.75	17.35	5.95	20.00	24.06	51.10	11.45	31.90	120.55	23.65	59.75	10.50	44.05		108.95		130.00	106.40		31.85
Louisville, Ky. RT	<b>85.65</b>	<b>104.30</b>	<b>55.35</b>	<b>31.20</b>	<b>10.70</b>	<b>36.00</b>	<b>43.21</b>	<b>91.95</b>	<b>20.60</b>	<b>57.40</b>	<b>216.95</b>	<b>42.55</b>	<b>107.55</b>	<b>18.90</b>	<b>79.25</b>		<b>196.10</b>		<b>234.00</b>	<b>191.50</b>		<b>57.30</b>
Memphis, Tenn. OW	71.10	76.00	54.43	31.00	29.60	43.70	44.23	27.40	31.00	8.25	104.10		85.50	13.20	62.10		87.70		123.05	80.80		49.90
Memphis, Tenn. RT	<b>127.90</b>	<b>136.80</b>	<b>97.98</b>	<b>55.80</b>	<b>53.25</b>	<b>78.65</b>	<b>79.62</b>	<b>49.30</b>	<b>55.80</b>	<b>14.85</b>	<b>187.35</b>		<b>153.85</b>	<b>23.75</b>	<b>111.75</b>		<b>157.85</b>		<b>221.45</b>	<b>145.40</b>		<b>89.80</b>
Montreal, P. Q. OW	14.40	20.90	28.99	55.00	53.80	39.75	41.74	106.95		93.30	170.00	85.50		72.35	23.40	96.45	158.40	68.95	170.00	154.95	89.95	35.60
Montreal, P. Q. RT	<b>25.90</b>	<b>37.60</b>	<b>52.19</b>	<b>99.00</b>	<b>96.88</b>	<b>71.55</b>	<b>75.14</b>	<b>192.50</b>		<b>167.90</b>	<b>306.00</b>	<b>153.85</b>		<b>130.20</b>	<b>42.10</b>	<b>173.60</b>	<b>285.10</b>	<b>124.10</b>	<b>306.00</b>	<b>278.90</b>	<b>161.90</b>	<b>64.05</b>
Nashville, Tenn. OW	58.10	62.85	41.26	26.70	16.45	30.50	33.90	40.55	21.60	21.40	115.30	13.20	72.35		48.95		100.85		130.00	93.95		36.75
Nashville, Tenn. RT	<b>104.55</b>	<b>113.10</b>	<b>74.27</b>	<b>48.05</b>	<b>29.60</b>	<b>54.90</b>	<b>61.02</b>	<b>73.00</b>	<b>38.85</b>	<b>38.50</b>	<b>207.50</b>	<b>23.75</b>	<b>130.20</b>		<b>88.10</b>		<b>181.50</b>		<b>234.00</b>	<b>169.10</b>		<b>66.15</b>
New York, N. Y. OW	9.00	13.90	21.95	47.95	38.10	29.70	34.70	86.60	42.35	70.35	160.00	62.10	23.40	48.95		84.45	146.90	56.95	160.00	140.10	77.95	12.20
New York, N. Y. RT	<b>16.20</b>	<b>25.00</b>	<b>39.51</b>	<b>86.30</b>	<b>68.55</b>	<b>53.45</b>	<b>62.46</b>	<b>155.85</b>	<b>76.20</b>	<b>126.60</b>	<b>288.00</b>	<b>111.75</b>	<b>42.10</b>	<b>88.10</b>		<b>152.00</b>	<b>264.40</b>	<b>102.50</b>	<b>288.00</b>	<b>250.15</b>	<b>140.30</b>	<b>21.90</b>
Oklahoma City, Okla. OW	84.30	95.65	67.45	41.45	58.60	54.70	12.50	51.95		88.00		96.45		84.45		72.80	27.50	106.95	65.90	6.50	77.45	
Oklahoma City, Okla. RT	<b>151.70</b>	<b>172.15</b>	<b>121.41</b>	<b>74.60</b>	<b>105.45</b>	<b>98.46</b>	<b>22.50</b>	<b>93.50</b>		<b>158.40</b>		<b>173.60</b>		<b>152.00</b>		<b>131.00</b>	<b>49.50</b>	<b>192.50</b>	<b>118.60</b>	<b>11.70</b>	<b>139.40</b>	
Philadelphia, Pa. OW	13.35	18.25	26.30	41.95	33.75		34.95	82.30	38.00	66.00	155.00	57.75	27.75	44.60	4.35	83.40	142.60	55.90	155.00	135.70	76.90	7.85
Philadelphia, Pa. RT	<b>24.00</b>	<b>32.80</b>	<b>47.31</b>	<b>69.75</b>	<b>60.75</b>		<b>62.91</b>	<b>148.10</b>	<b>68.40</b>	<b>118.80</b>	<b>279.00</b>	<b>103.95</b>	<b>49.95</b>	<b>80.25</b>	<b>7.80</b>	<b>150.10</b>	<b>256.65</b>	<b>100.60</b>	<b>279.00</b>	<b>244.25</b>	<b>138.40</b>	<b>14.20</b>
Phoenix, Ariz. OW	146.25	157.60	129.41	103.40	111.95	118.40	116.66	60.30	117.40	79.50	23.15	87.70	158.40	100.85	146.90	72.80		96.45	42.10	6.90	77.30	134.75
Phoenix, Ariz. RT	<b>263.25</b>	<b>283.65</b>	<b>232.94</b>	<b>186.10</b>	<b>201.50</b>	<b>213.10</b>	<b>209.99</b>	<b>108.50</b>	<b>211.30</b>	<b>143.10</b>	<b>41.65</b>	<b>157.85</b>	<b>285.10</b>	<b>181.50</b>	<b>264.40</b>	<b>131.00</b>		<b>173.60</b>	<b>75.75</b>	<b>12.40</b>	<b>139.10</b>	<b>242.55</b>
Providence, R. I. OW	3.25	26.90	52.80	48.65	37.55	39.55	97.15	52.90	80.90	167.80	72.65		59.50	10.55	9							



**\$2,500.00 IN CASH... TO**

for information See page 11

**OUR MILLIONTH PASSENGER!**



**NEW YORK — LOS ANGELES**  
**BOSTON — NEW YORK — PHILADELPHIA — WASHINGTON — TEXAS — CALIFORNIA**

WESTBOUND Read Down							EASTBOUND Read Up								
The Southern No. 7 Daily	No. 17 Daily	American Mercury No. 3 Daily	No. 5 Daily	No. 11 Daily	No. 1 Daily	No. 9 †	TABLE 1								
Mls.	No. 2 Daily	American Mercury No. 4 Daily	No. 16 Daily	No. 10 †	The Southern No. 8 Daily	No. 6 Daily	No. 12 Daily								
pm 6.10	am 5.30	pm 3.00	pm 2.35	pm 12.30	am 10.15	pm	am	Lv Boston (E.T.)	Ar	pm 2.18	am 6.48	pm 6.48	pm 8.47	pm 8.47	pm 9.48
pm 6.43	—	—	f 3.04	—	—	—	—	Lv Providence	Ar	—	—	—	f 8.17	f 8.17	—
pm 7.23	—	—	▲ 3.44	—	—	—	—	Lv Hartford	Ar	—	—	—	f 7.47	f 7.47	—
pm 7.49	—	—	v 4.06	—	—	—	—	Lv New Haven	Ar	—	—	—	s 7.25	s 7.25	—
8.40	—	*5.10	2.00	*12.20	—	a 7.10	0	Lv NEW YORK (Newark Airport)	(E.T.)	Ar	11.20	a 4.20	4.53	6.26	7.46
—	—	—	h 2.35	1.00	—	—	72	Lv PHILADELPHIA (Camden)	Ar	—	—	—	—	5.51	7.06
—	—	—	3.25	—	—	—	164	Lv BALTIMORE	Ar	—	—	—	—	5.07	—
—	—	—	3.50	1.55	—	a 8.30	203	Lv WASHINGTON	Ar	—	—	a 3.00	3.33	4.37	*6.11
—	—	—	—	2.07	—	9.00	—	Lv WASHINGTON	Ar	—	—	2.22	3.21	—	5.59
—	—	—	—	—	—	10.17	—	Lv Lynchburg	Ar	—	—	*1.12	—	—	—
—	—	—	—	—	—	10.48	—	Lv Roanoke	Ar	—	—	12.43	—	—	—
—	—	—	—	—	—	12.00	—	Lv Bristol	Ar	—	—	11.40	—	—	—
—	—	—	—	—	—	11.55	—	Lv Knoxville (C.T.)	Ar	—	—	9.40	—	—	—
—	—	—	—	—	—	760	Ar	Lv Nashville	Ar	—	—	8.30	—	—	1.45
—	—	—	—	—	—	—	—	Lv Nashville	Ar	—	—	—	—	—	1.33
—	—	—	—	—	—	967	Ar	Lv Memphis	Ar	—	—	—	—	—	12.13
—	—	—	—	—	—	—	—	Lv Memphis	Ar	—	—	—	—	—	12.03
—	—	—	—	—	—	1096	Ar	Lv Little Rock	Ar	—	—	—	—	—	11.07
—	—	—	—	—	—	1402	Ar	Lv DALLAS	Ar	—	—	—	—	—	9.05
—	—	—	—	—	—	—	—	Lv DALLAS	Ar	—	—	—	—	—	9.00
—	—	—	—	—	—	1431	Ar	Lv FT. WORTH	Ar	—	—	10.22	—	—	8.40
—	—	—	—	—	—	—	—	Lv FT. WORTH	Ar	—	—	10.02	—	—	—
—	—	—	—	—	—	—	—	Lv Abilene	Ar	—	—	8.53	—	—	—
—	—	—	—	—	—	1681	Ar	Lv Big Spring	Ar	—	—	8.00	—	—	—
—	—	—	—	—	—	1977	Ar	Lv El Paso (M.T.)	Ar	—	—	*5.08	—	—	—
—	—	—	—	—	—	2180	Ar	Lv Douglas	Ar	—	—	3.38	—	—	—
—	—	—	—	—	—	2281	Ar	Lv Tucson	Ar	—	—	2.47	—	—	—
—	—	—	—	—	—	2391	Ar	Lv Phoenix	Ar	—	—	1.53	—	—	—
—	—	—	—	—	—	2767	Ar	Lv LOS ANGELES (Glendale)	(P.T.)	Ar	*10.30	*4.30	—	—	—
—	—	—	—	—	—	—	—	Lv San Francisco (UAL)	Ar	—	—	—	—	—	—
—	—	—	—	—	—	—	—	Lv San Diego (UAL-WAE)	Ar	—	—	—	—	—	—
2.30	—	11.24	—	—	—	2.40	—	Ar San Francisco (UAL)	Ar	—	—	—	—	—	—
2.55	—	10.25	—	—	—	—	—	Ar San Diego (UAL-WAE)	Ar	—	—	—	—	—	—
pm	am	pm	pm	pm	am	pm	pm	Equipment	—	—	—	—	—	—	—
Sleeper	Douglas	Sleeper	Douglas	Douglas	Douglas	Stinson A	—	Equipment	—	—	—	—	—	—	—
Flagship	—	Flagship	—	—	—	—	—	Stewardesses on Flagships and Douglas	—	—	—	—	—	—	—

**Boston—New York State—Cleveland—Texas—California**

WESTBOUND Read Down				EASTBOUND Read Up				
No. 19 Daily	No. 7 Daily	No. 21 Daily	No. 3 Daily	TABLE 2				
Mls.	No. 20 Daily	No. 18 Daily	No. 12 Daily	No. 8 Daily				
5.20	—	—	—	0	Lv BOSTON (E.T.)	Ar	10.39	—
6.41	—	—	—	Lv Albany	Ar	5.40	9.32	—
6.58	—	—	—	159	Lv Utica	Ar	9.19	—
7.48	—	—	—	241	Lv Syracuse	Ar	8.41	—
8.23	—	—	—	290	Lv Rochester	Ar	8.11	—
9.08	—	—	—	362	Lv Buffalo	Ar	7.32	—
9.50	—	—	—	417	Lv CLEVELAND	Ar	6.59	—
11.18	—	—	—	614	Lv CLEVELAND	Ar	5.25	—
—	—	—	—	—	Lv CLEVELAND	Ar	1.24	—
—	—	—	—	726	Lv Columbus	Ar	*12.32	—
—	—	—	—	828	Lv Cincinnati	Ar	11.39	—
—	—	—	—	—	Lv Cincinnati	Ar	11.27	—
—	—	—	—	919	Lv Louisville (C.T.)	Ar	9.44	—
—	—	—	—	1083	Lv Nashville	Ar	8.25	—
—	—	—	—	—	Lv Nashville	Ar	8.05	—
—	—	—	—	1290	Lv Memphis	Ar	6.45	—
—	—	—	—	—	Lv Memphis	Ar	4.42	—
—	—	—	—	1419	Lv Little Rock	Ar	—	—
—	—	—	—	1725	Lv DALLAS	Ar	2.16	—
—	—	—	—	—	Lv DALLAS	Ar	2.04	—
—	—	—	—	1754	Lv FT. WORTH	Ar	—	—
—	—	—	—	—	Lv FT. WORTH	Ar	—	—
—	—	—	—	2300	Lv El Paso (M.T.)	Ar	—	—
—	—	—	—	2604	Lv Tucson	Ar	8.22	—
—	—	—	—	2714	Lv Phoenix	Ar	—	—
—	—	—	—	3083	Lv LOS ANGELES (P.T.)	Ar	*4.30	—

**BOSTON — NEW YORK — SOUTH TEXAS — MEXICO CITY**

SOUTHBOUND Read Down				NORTHBOUND Read Up			
TABLE 3							
pm 6.10	pm 3.00	am 10.15	Lv BOSTON (E.T.)	Ar	pm 2.18	pm 6.48	pm 9.48
8.40	5.10	12.20	Lv NEW YORK	Ar	11.20	4.53	7.46
—	—	1.00	Lv PHILADELPHIA	Ar	—	—	7.06
—	—	2.07	Lv WASHINGTON	Ar	a 4.45	3.21	5.59
a 5.45	—	—	Lv DETROIT	Ar	a 2.45	—	a 9.02
—	—	—	Lv BUFFALO	Ar	3.24	—	—
—	—	—	Lv CLEVELAND	Ar	1.24	—	6.59
—	—	—	Lv Cincinnati	Ar	11.27	—	5.02
—	—	—	Lv Louisville (C.T.)	Ar	9.39	—	3.14
—	—	—	Lv Nashville	Ar	4.42	9.51	12.03
—	—	—	Lv Memphis	Ar	2.16	6.35	9.05
—	—	—	Lv Little Rock	Ar	1.15	7.13	8.40
—	—	—	Lv DALLAS	Ar	—	—	—
—	—	—	Lv FT. WORTH	Ar	—	—	—
—	—	—	Lv Houston (BNF)	Ar	8.30	i 9.30	i 11.30
—	—	—	Lv Galveston	Ar	8.00	—	j 8.00
—	—	—	Lv San Antonio	Ar	7.50	—	j 11.00
—	—	—	Lv Corpus Christi	Ar	6.40	—	—
—	—	—	Lv Brownsville	Ar	5.40	—	—
—	—	—	Lv MEXICO CITY (PAA)	Ar	1.25	—	—

For explanation of reference marks see page 9

**NEW YORK — CHICAGO**  
**NEW YORK — BUFFALO — DETROIT — CHICAGO**

WESTBOUND—Read Down

TABLE 4		No. 19 †	No. 9 ★ Daily	No. 23 †	American Eagle No. 21 Daily	No. 15 ★ Daily	Pacific Northwest No. 3 Daily	No. 25 †	American Arrow No. 17 Daily	The Chicagoan No. 1 Daily	No. 5 #	The Night Owl No. 7 Daily	Giant Flagship Club Planes on all Chicago-New York Flights
Mls.	★—Via Niagara Falls and Gorge												
0	NEW YORK (Newark) (E.T.)	Lv	9.00am	10.00am	*12.00N	*12.10pm	3.00pm	—	*5.00pm	*6.00pm	8.00pm	1.00am	
282	BUFFALO	Ar	11.00am	1.14pm	NON-STOP	2.10pm	5.00pm	—	NON-STOP	8.00pm	10.00pm	3.00am	
504	DETROIT	Ar	11.10am	—	NON-STOP	5.10pm	6.42pm	—	NON-STOP	8.10pm	10.10pm	3.10am	
751	DETROIT	Lv	12.42pm	—	NON-STOP	3.52pm	4.02pm	—	NON-STOP	9.39pm	11.39pm	4.40am	
—	South Bend (C.T.)	Lv	87.30am	—	NON-STOP	*6.52pm	7.00pm	—	NON-STOP	9.49pm	11.49pm	4.50am	
—	CHICAGO	Ar	+7.49am	—	NON-STOP	8.31am	8.37pm	—	NON-STOP	10.30pm	12.30am	5.32am	
—	CHICAGO	Ar	1.33pm	—	NON-STOP	—	—	—	NON-STOP	—	—	—	
Equipment	Flagship Club Plane	Flagship Club Plane	Stinson A	Flagship Club Plane	Flagship Club Plane	Flagship Club Plane	Stinson A	Flagship Club Plane	Flagship Club Plane	Flagship Club Plane	Flagship Club Plane	Flagship Club Plane	

NOTE—Stewardesses aboard all Flagship flights.

**CHICAGO — DETROIT — BUFFALO — NEW YORK**

EASTBOUND—Read Down

TABLE 4		No. 10 ★ Daily	No. 24 †	The Manhattan No. 12 ★ Daily	American Eagle No. 22 Daily	No. 2 Daily	No. 26 †	New Yorker No. 4 Daily	American Arrow No. 16 Daily	No. 14 §	International No. 6 #	The Night Owl No. 8 Daily	Fly Above Winter with the Flagship Fleet
Mls.	★—Via Niagara Falls and Gorge												
0	CHICAGO (C.T.)	Lv	8.00am	—	*11.00am	*12.00N	2.30pm	3.00pm	4.30pm	*5.00pm	*6.00pm	8.30pm	12.30am
247	DETROIT	Ar	10.27am	—	NON-STOP	4.57pm	6.30pm	6.57pm	NON-STOP	*6.38pm	8.45pm	10.57pm	2.57am
469	DETROIT	Lv	10.37am	—	NON-STOP	5.07pm	—	*7.07pm	NON-STOP	—	—	11.07pm	3.07am
751	CHICAGO (Newark)	Ar	11.56am	—	NON-STOP	2.56pm	—	8.24pm	NON-STOP	—	—	12.24am	4.24am
—	CHICAGO	Ar	*12.06pm	—	NON-STOP	3.06pm	—	8.34pm	NON-STOP	—	—	12.34am	4.34am
—	CHICAGO	Ar	1.40pm	—	NON-STOP	4.40pm	—	10.08pm	NON-STOP	—	—	2.08am	6.08am
Equipment	Flagship Club Plane	Stinson A	Flagship Club Plane	Flagship Club Plane	Flagship Club Plane	Stinson A	Flagship Club Plane	Flagship Club Plane	Flagship Club Plane	Flagship Club Plane	Flagship Club Plane	Flagship Club Plane	

NOTE—Stewardesses aboard all Flagship flights.

**CHICAGO — TEXAS — LOS ANGELES**  
**ST. LOUIS — OKLAHOMA — TEXAS — ARIZONA**

TABLE 5

The Longhorn No. 3 Daily	No. 7 Daily	No. 9 †	The Lone Star No. 1 Daily	Mls
--------------------------	-------------	---------	---------------------------	-----





**\$2,500<sup>00</sup> IN CASH... TO**

**OUR MILLIONTH PASSENGER!**



**GENERAL SALES OFFICE: — 4848 W. 63rd St., (Municipal Airport) Chicago**

**CABLE ADDRESS: AMAIR**

**J. HERMAN THELLIG** ..... Manager-Agency and Foreign Department  
**C. W. JACOB** ..... Asst. to Vice President-Sales  
**R. S. MAUGHAM** ..... Manager-Air Mail and Express

**CHARLES A. RHEINSTROM** ..... Vice President-Sales

**M. D. MILLER** ..... Manager-National Accounts  
**WILLARD REED, JR.** ..... Supervisor of Reservations and Ticket Offices  
**W. J. DUNN** ..... Publicity Director

**INFORMATION—RESERVATIONS—TICKETS**

**ABILENE, TEXAS** ..... Reservations, Municipal Airport ..... Tel. 7021  
 Ticket Office, Hilton Hotel Lobby ..... Tel. 3261  
**AKRON, OHIO** ..... Reservations, Municipal Airport ..... Tel. Jefferson on 5151  
**ALBANY, N. Y.** ..... Reservations, Albany Airport ..... Tel. 2-4466 or 2-4467  
 Ticket Office, 83 State Street ..... Tel. 5-2141  
**ANN ARBOR, MICH.** ..... F. S. Randall, Gen'l Agent, 12 Nickels Arcade ..... Tel. 6040  
 Passenger Terminal, Municipal Airport ..... Tel. 9270  
**BALTIMORE, MD.** ..... Reservations, Logan Field ..... Tel. Riverside 0640  
 Ticket Office, 213 N. Charles St. ..... Tel. Plaza 1180  
**BATTLE CREEK, MICH.** ..... Ticket Office, Auto Club ..... Tel. 2-5121  
**BIG SPRING, TEXAS** ..... Passenger Terminal, Kellogg Airport ..... Tel. 2-3914  
**BOSTON, MASS.** ..... Passenger Terminal, American Airlines Field ..... Tel. 1160  
 Reservations, Boston Airport ..... Tel. East Boston 2040  
 Ticket Office, 140 Federal St. ..... Tel. Liberty 6233  
**BRISTOL, VA.** ..... Passenger Terminal Bristol Airport ..... Tel. Bristol 1776  
 Ticket Office, General Shelby Hotel ..... Tel. 1718  
**BUFFALO, N. Y.** ..... Reservations, Buffalo Airport ..... Tel. Fillmore 4044  
 Traffic Office, Statler Hotel ..... Tel. Washington 3861  
**CAMDEN, N. J.** ..... Reservations, Central Airport ..... Tel. 5690  
**CHARLESTON, W. VA.** ..... Passenger Terminal, Wertz Field ..... Tel. South 4523  
**CHICAGO, ILL.** ..... Reservations, Municipal Airport ..... Tel. Hemlock 5000  
 Ticket Office, 312 S. Michigan Ave. ..... Tel. Harrison 2627  
 Ticket Office, Board of Trade Bldg., 145 W. Jackson Blvd. Telephone Harrison 1177  
**CINCINNATI, OHIO** ..... Reservations, Lunken Airport ..... Tel. East 4700  
 Ticket Office, 419 Walnut St. ..... Tel. Parkway 2171  
**CLEVELAND, OHIO** ..... Reservations, Cleveland Airport ..... Tel. Clearwater 3300  
 Ticket Office, 839 Union Trust Bldg. ..... Tel. Cherry 3900  
**COLUMBUS, OHIO** ..... Ticket Office, 20 E. Broad Street ..... Tel. Main 3303  
 Pass. Terminal, Port Columbus Airport—Evergreen 4618  
**CORNING, N. Y.** ..... Pass. Term. (Elmira) Amer. Airlines Field ..... Tel. Elmira 4568  
**DALLAS, TEXAS** ..... Ticket Office, 1404 Commerce St. ..... Tel. 2-8747  
 Passenger Terminal, Love Field ..... Tel. 5-3181  
**DETROIT, MICH.** ..... Reservations, City Airport ..... Tel. Pingree 7000  
 Ticket Office, 1251 Washington Blvd. ..... Tel. Cadillac 5221  
**DOUGLAS, ARIZ.** ..... Passenger Terminal, International Airport ..... Tel. 60  
**EAST ST. LOUIS, ILL.** ..... Passenger Terminal, Curtiss Airport ..... Tel. Bridge 8700  
**ELKINS, W. VA.** ..... Passenger Terminal, Municipal Airport ..... Tel. 223  
**ELMIRA, N. Y.** ..... Pass. Terminal, American Airlines Field ..... Tel. 4568  
**EL PASO, TEXAS** ..... Reservations, American Airlines Field ..... Tel. Main 221  
 Reservations, Meacham Field ..... Tel. 6-1183  
 Ticket Office, Texas Hotel ..... Tel. 2-7218  
**HARTFORD, CONN.** ..... Passenger Terminal, Rentschler Field ..... Tel. 8-4133  
**HOLLYWOOD, CALIF.** ..... Ticket Office, 6733 Hollywood Blvd., Tel. HOLlywood 3914  
**HONOLULU, HAWAII** ..... Inter-Island Steam Navigation Co. Ltd., Fort and Merchant Street, Tel. 4941  
**HOUSTON, TEXAS** ..... Ticket Office, Texas State Hotel Lobby ..... Tel. Capitol 5259  
**INDIANAPOLIS, IND.** ..... Passenger Terminal, Municipal Airport, Tel. Belmont 4975  
**JACKSON, MICH.** ..... Passenger Terminal, Reynolds Airport ..... Tel. 5275  
**KALAMAZOO, MICH.** ..... Passenger Terminal, Municipal Airport ..... Tel. 7342  
**KNOXVILLE, TENN.** ..... Terminal Office, Island Airport ..... Tel. 2-2218  
 Reservations, Municipal Airport ..... Tel. 6822  
**LITTLE ROCK, ARK.** ..... Reservations, Municipal Airport ..... Tel. 5211  
 Ticket Office, Albert Pike Hotel ..... Tel. 5211  
**LOS ANGELES, CALIF.** ..... Ticket Office, 512 West 6th Street ..... Tel. MICHigan 8822  
 Hollywood Tick. Off. 6733 Hollywood Blvd. HOLlywood 3914  
 Central Air Terminal, Glendale, Calif. ..... Tel. Omaha 3-4081

**LOUISVILLE, KY.** ..... Ticket Office, Kentucky Hotel ..... Tel. Wabash 2813  
 Reservations, Bowman Field ..... Tel. Highland 4600  
**LYNCHBURG, VA.** ..... Passenger Terminal, Preston Glenn Airport ..... Tel. 546  
**MEMPHIS, TENN.** ..... Reservations, Municipal Airport ..... Tel. 3-2340  
 Ticket Office, Hotel Peabody ..... Tel. 8-3245  
 Wells Fargo & Co., Av. Madero No. 14 ..... Tel. Eric 2-93-90 or Mex L31-00  
**MILWAUKEE, WIS.** ..... Ticket Office, 203 East Wisconsin ..... Tel. Daly 6668  
**MINNEAPOLIS, MINN.** ..... Ticket Office, 711 Marquette Ave. ..... Tel. Atlantic 2289  
**MONTREAL, QUE., CAN.** ..... Reservations, Hotel Mount Royal ..... Tel. Plateau 2501  
 Passenger Terminal, St. Hubert Airport, Tel. Longueuil 525  
**NASHVILLE, TENN.** ..... Ticket Office, Hermitage Hotel ..... Tel. 6-0915  
 Reservations, Sky Harbor Airport ..... Tel. 6-2211  
**NEWARK, N. J.** ..... Passenger Terminal, Newark Airport ..... Tel. Market 3-2970  
**NEW HAVEN, CONN.** ..... Pass. Term., Municipal Airport ..... Tel. New Haven 4-1500  
**NEW YORK, N. Y.** ..... Reservations, 45 Vanderbilt Ave. ..... Tel. VANDerbilt 3-2580  
 Passenger Terminal, Newark Airport ..... Tel. Market 3-2970  
 Ticket Office, 204 N. Broadway ..... Tel. 3-4214  
**OKLAHOMA CITY, OKLA.** ..... Passenger Terminal, Oklahoma City Airport ..... Tel. 3-7308  
**OTTAWA, ONT.** ..... Reservations, Chateau Laurier ..... Tel. Queen 4328  
 Passenger Terminal, Rockcliffe Park ..... Tel. PIDEau 1784  
**PEORIA, ILLINOIS** ..... Ticket Office, Pere Marquette Hotel ..... Tel. 4-5070  
 Passenger Terminal, Peoria Airport ..... Tel. 5322  
**PHILADELPHIA, PA.** ..... Ticket Office, 1339 Walnut St. ..... Pennypacker 5750  
 Central Airport (Camden, N. J.) ..... Tel. Camden 5690  
**PHOENIX, ARIZ.** ..... Ticket Office, 17 E. Jefferson St. ..... Tel. 3-5609 or 4-3506  
 Passenger Terminal, Sky Harbor Airport ..... Tel. 3-7476  
**PITTSBURGH, PA.** ..... Municipal Airport ..... Tel. Homestead 1300  
 Penn.-Central Airlines, William Penn Hotel, Tel. Grant 6100  
**PROVIDENCE, R. I.** ..... Ticket Office, Turks Head Bldg., 76 Westminster Street  
 Dexter 3460  
**ROANOKE, VA.** ..... Reservations, R. I. State Airport ..... Williams 2600  
**ROCHESTER, N. Y.** ..... Terminal Office, Municipal Airport ..... Tel. 2-7021  
 Ticket Office, 4 Stone St. ..... Tel. Stone 2408  
**ROME, N. Y.** ..... Passenger Terminal, Rochester Airport ..... Tel. Genesee 4006  
**ST. LOUIS, MO.** ..... Passenger Terminal, Utica Airport ..... Tel. 6319  
 Reservations, Lambert Field ..... Tel. Winfield 1811  
 Ticket Office, 403 North 12th Blvd. ..... Tel. GARfield 5303  
**ST. PAUL, MINN.** ..... Ticket Office, 115 E. Fourth Street ..... Garfield 4881  
**SAN DIEGO, CALIF.** ..... J. K. Polk Gen'l Agency, 232 Broadway, Tel. Franklin 3252  
**SAN FRANCISCO, CALIF.** ..... Ticket Office, 1105 Russ Bldg. ..... Garfield 8336  
**SCHENECTADY, N. Y.** ..... Passenger Terminal, Albany Airport—Schenectady 2-2728  
**SCRANTON, PA.** ..... Pass. Term., Scranton Airport ..... Tel. Clark's Summit 333  
**SOUTH BEND, IND.** ..... Passenger Terminal, Bendix Airport ..... Tel. 3-1101  
**SPRINGFIELD, ILL.** ..... Pass. Term., Springfield Airp't, Main 864, Night, Capitol 1518  
**SYRACUSE, N. Y.** ..... Ticket Office, 225 S. State St. ..... Tel. 6-1629  
 Passenger Terminal, Syracuse Airport ..... Tel. 6-2131  
**TUCSON, ARIZ.** ..... Passenger Terminal, Tucson Airport ..... Tel. 5868  
**TULSA, OKLA.** ..... Ticket Office, Santa Rita Hotel ..... Tel. 911  
 Ticket Office, Hotel Tulsa Lobby ..... Tel. 2-5209  
 Passenger Terminal, Municipal Airport ..... Tel. 6-4958  
**UTICA, N. Y.** ..... Passenger Terminal, Utica Airport ..... Tel. 6319  
**WASHINGTON, D. C.** ..... Reservations, Washington Airport ..... Tel. NATIONAL 0442  
 Ticket Office, 813 15th Street, N. W. ..... Tel. NATIONAL 4108  
**YOUNGSTOWN, OHIO** ..... L. B. Burger Travel Service, 39 N. Phelps Ave., Tel. 7-5141

Postal Telegraph and Western Union Offices — Reservations may be made by telephone; uniformed messenger will deliver ticket order and collect air fare without extra charge within city limits.

—ALSO—  
 American Express "Ask Mr. Foster Travel Service"; Thos. Cook & Son; Raymond-Whitcomb; other Travel Bureaus and the Transportation Desk of Leading Hotels.

**TRANSPORTATION TO AND FROM AIRPORTS**

If Ground Transportation is desired passengers must inform Ticket Agent at time reservation is made

City	Airport	Miles	Minutes	Fare
Abilene	Municipal	3½E	15	\$0.50
Albany	Municipal	9 NW	30	1.00
Baltimore	Logan Field		40	75
Big Spring	American	2½W	10	(d) .50
Boston	Municipal, 140 Federal St.	1 E	25	.50
Bristol	Municipal	4 E	20	.50
Buffalo	Municipal	7 E	40	.75
Charleston	Wertz	9 W	50	.75
Chicago	Municipal	12 SW	50	.75
Cincinnati	Lunken	6 E	40	.50
Cleveland	Municipal	8½SW	40	.75
Columbus	Pt. Columbus	8 E	40	.75
Dallas	Love	6 N	30	.50
Detroit	City	6 NE	35	.75
Douglas	Intern'l	2½E	15	1.00
East St. Louis	Curtiss	3 S	10	.50
Elkins	Municipal	7 NW	25	1.00
Elmira	American	3 S	10	.50
El Paso	American	7 NE	25	.75
Ft. Worth	Meacham	5 N	30	.50
Hartford	Rentschler	3 SE	25	(d) 1.00
Indianapolis	Municipal	8½SW	35	.75
Knoxville	Island	2½E	20	.50
Little Rock	Municipal	1½SE	10	.50
Los Angeles, (g)	Grand Cent.	14 NW	60	.75
Louisville	Bowman	6 SE	30	.75
Lynchburg	Preston Glenn	8 S	20	.50
Memphis	Municipal	9 SE	40	.75
Montreal, (h)	St. Hubert	12½E	45	1.00

City	Airport	Miles	Minutes	Fare
Nashville, Hermitage Hotel	Sky Harbor	26 SE	50	\$1.00
Newark	Newark	2 S	20	(d) .50
New Haven	Municipal	3½SE	15	(d) 1.00
New York (a)	Newark	14 SW	60	1.00
Okla. City, 204 N. Bdwy	Municipal	9 SW	40	.75
Ottawa	Rockcliffe	9 SW	20	.75
Peoria	Municipal	6 SW	25	.75
Philadelphia	Camden	4½SE	30	.50
Phoenix	Sky Harbor	3½E	15	.50
Providence, (i)	R. I. State	6½S	25	.50
Roanoke	Municipal	5 NW	20	.50
Rochester	Municipal	4½SW	25	.60
St. Louis	Lambert	15½NW	50	1.00
Scranton	Curtiss	3 SE	25	.75
South Bend	Municipal	12 W	35	1.00
Springfield, Ill.	Bendix	3½NW	15	.40
Syracuse	Municipal	5 SW	25	.50
Tucson	Municipal	8 NW	30	.75
Tulsa	Municipal	6 SE	15	(e) 1.00
Utica	Municipal	6 NE	30	.50
Washington	Municipal	7 NW	25	1.00
Washington	Washington	3 S	20	.50

a—45 Vanderbilt Avenue and New Yorker Hotel. c—\$1.00 for one or two; 50c for each additional passenger. d—Approximate fare-pay meter rate. f—\$.80, 50 for one; two or more \$0.25 each. g—Biltmore, Ambassador and Roosevelt Hotels. h—Mount Royal or Windsor Hotels. i—Ticket Office, Turks Head Building or Providence-Biltmore Hotel.



**\$2,500<sup>00</sup> IN CASH TO OUR MILLIONTH PASSENGER!**

Soon American Airlines will be the first airline in the world to carry one million passengers. Because this is such an important event in the history of air transportation, American will celebrate it. American's one millionth passenger will receive \$2,500 in cash. The ten passengers nearest will receive \$100 cash gifts. Tickets will be checked with Stromberg Electric Time Stamps, accurate to the minute.

When will American carry its millionth passenger? Very soon, is all we can say—maybe this week, perhaps next week! If you are planning to travel anyway, why not fly American and perhaps win one of these cash awards?

For folder with complete details, ask American Airlines or your travel bureau, hotel porter or telegraph office.

**GENERAL INFORMATION**

**ANIMALS**—Pets will be accepted as excess baggage under certain conditions. Consult AMA agent.  
**BAGGAGE**—Thirty-five (35) pounds of baggage will be carried free on any ticket. Excess baggage carried upon special arrangements and shall be at the rate per pound of one-half of one per cent of the published air passenger fare, with a minimum charge of twenty-five cents, and the liability of the Carrier for loss of or damage to baggage and/or personal property is limited to the amount of One Hundred Dollars (\$100.00) unless a higher valuation be declared and an additional charge paid therefor. Excess valuation limited to \$1000.00 on each full fare ticket.  
 From 35 to 55 pounds of baggage will be carried free on tickets of passengers destined to Mexico, Central and South America using Pan American Airways. Inquire of ticket agent for full details.  
 135 pounds of baggage will be transported free—35 pounds by air and 100 pounds by Railway Express—on tickets of transoceanic passengers destined to or arriving from Europe, Honolulu and beyond. Inquire of ticket agent for full details.  
**CHILDREN**—Children under two years of age, when held in arms of parents or guardian, carried free. Children over two years of age will be charged full fare.  
**INSURANCE**—Trip insurance is available at most airports.

**PASSAGE, CANCELLATION BY COMPANY**—The Company reserves the right to cancel bookings before passage or en route. Pilot may remove passengers from plane at any point on the route for safety or other cause. In all events the passenger's sole recourse shall be recovery of that portion of the fare equal to the distance untraveled.  
**PASSAGE, CANCELLATION BY PASSENGER**—The purchaser may receive a refund for passage if canceled two hours prior to flight.  
**REFUNDS**—Requests for refunds on tickets should be addressed to the Auditor of Ticket Accounts, American Airlines, Inc., 4848 West Sixty-Third St., Chicago, Ill.  
**RESERVATIONS**—All space is reserved, though no definite seat assignments are made. Reservations will not be made except upon payment of fare.  
**ROUND TRIP FARES**—10% reduction on all round-trip tickets if purchased before start of original trip. Return trip must be started within sixty days.  
**STOP-OVER**—Ten (10) day stop-over will be allowed at any regular stop, provided reservation is made accordingly.  
**TIME-TABLES**—These time-tables show the times at which planes may be expected to depart from and arrive at the several stations shown, and to connect with trains or other planes, but their departure, arrival, or connection at the time stated is not guaranteed. American Airlines reserves the right to vary from the time shown in this folder without notice to the public.