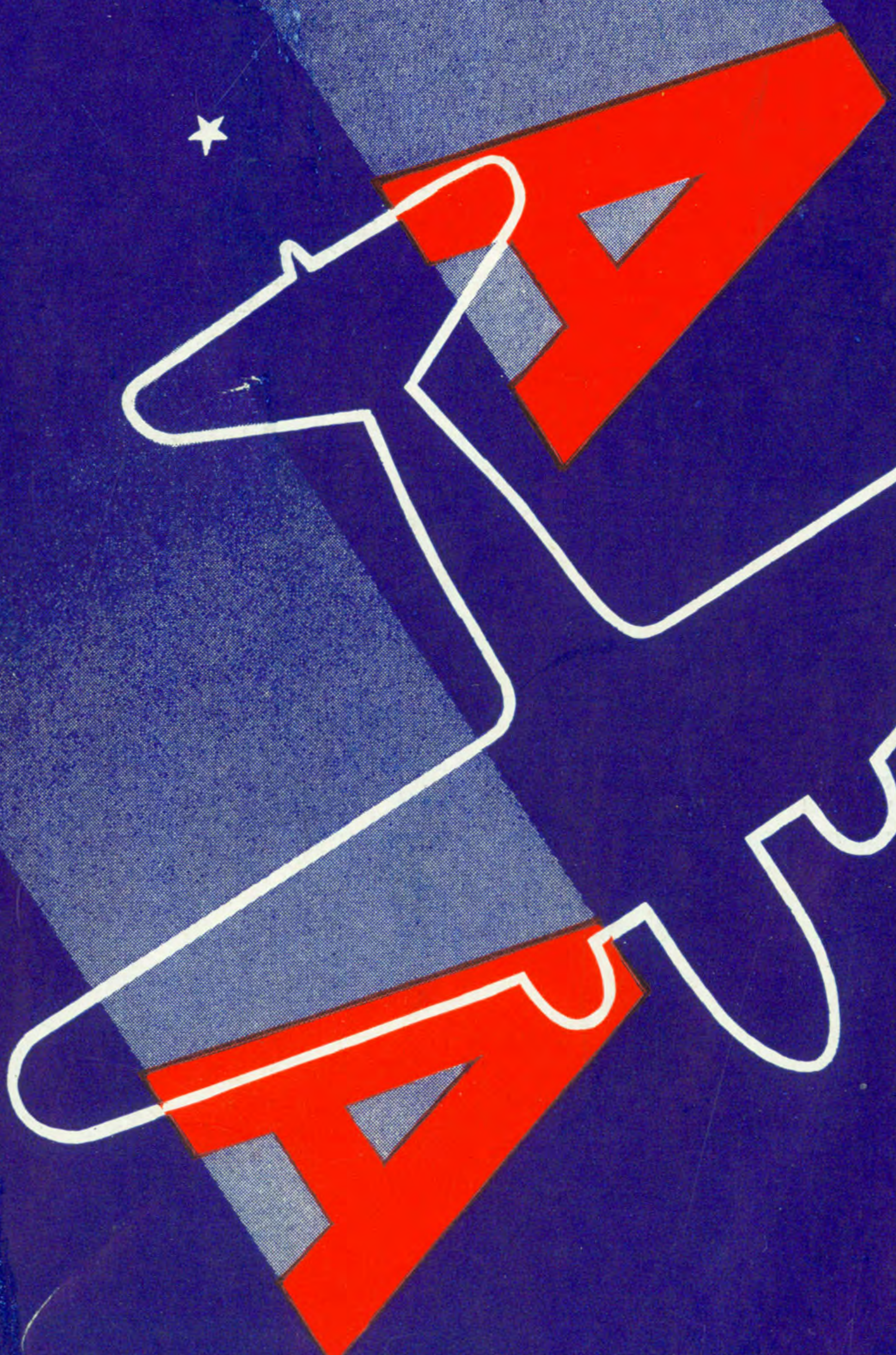


**AMERICAN
AIRLINES
INC.**



APRIL 1, 1937

AMERICAN AIRLINES, INC.



SPRING SCHEDULE
INFORMATION FROM

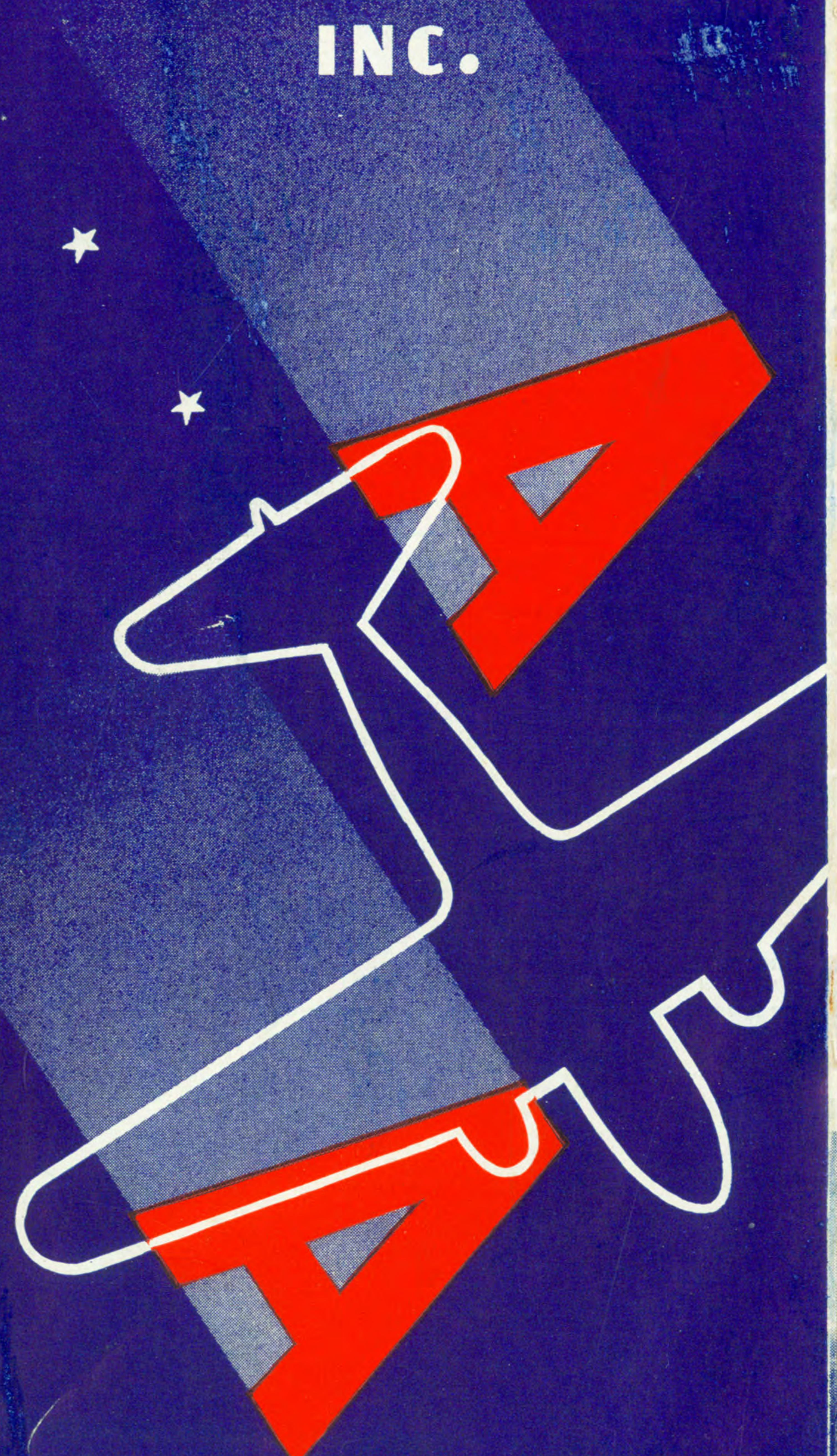
THE *Million* PASSENGER LINE

★
SYSTEM TIME TABLE
Effective April 1, 1937

PRINTED IN U.S.A.

CALVERT-HATCH CO.

AMERICAN AIRLINES INC.

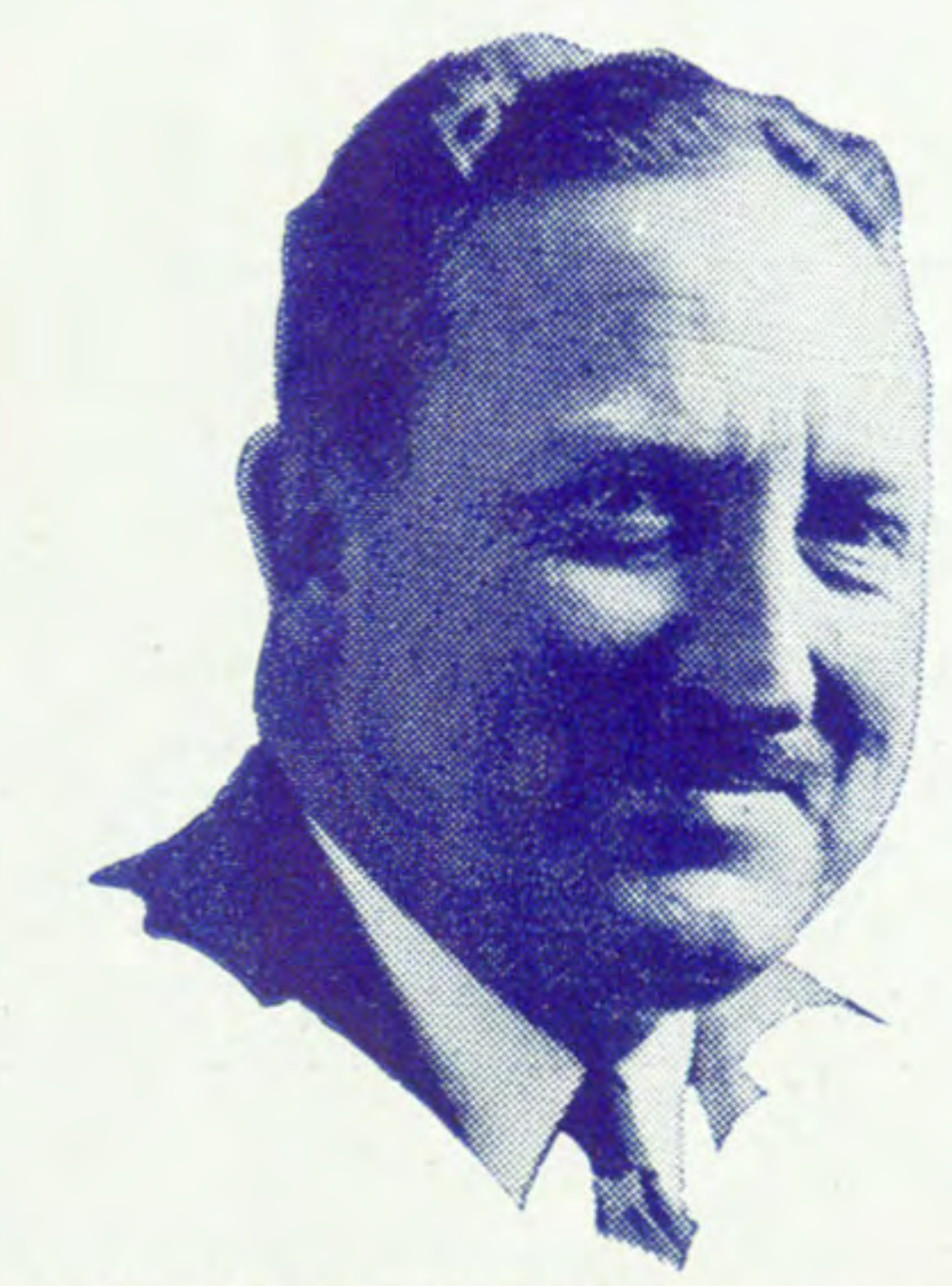


APRIL 1, 1937

NOW... MORE THAN

1,000,000 PASSENGERS!

AMERICAN AIRLINES SETS NEW SIGNIFICANT WORLD'S RECORD IN AIR TRANSPORTATION



AMERICAN'S 1,000,000th passenger, Col. Theodore C. Baker, who has been awarded the trip of a lifetime: to Europe on the Airship Hindenburg, returning on the S. S. Normandie or R. M. S. Queen Mary... plus \$1,000 in cash!

On February 16, Col. Theodore C. Baker, of Brookline, Mass., purchased an American Airlines' ticket to fly in a giant Flagship Non-Stop from Boston to New York and, thence, to Florida. At that moment he made aviation history by becoming American Airlines' 1,000,000th revenue passenger . . . and the first millionth passenger to be carried by *any* airline in the world!

What does this record signify? It demonstrates that air transportation, now, is an *accepted* mode of travel . . . and a rapidly increasing factor in our national life. It demonstrates that modern men and women *need* air service, every day, for business and pleasure.

This new record, too, has focused even more attention on American Airlines' leadership in air transportation.

American has justified this leadership by its many "firsts" in air service . . . by being *first* to provide Sleeper Planes, *first* with the new giant Flagships by Douglas, *first* with "First-Class" luxury and comfort for air travelers.

American pledges itself to continue to *deserve* its leadership with service which will *go on* earning public preference.

AMERICAN—THE *Million* PASSENGER LINE

Copyright 1937
American Airlines, Inc.



OUR BEST TESTIMONIAL!

No individual praise has currently proved so fine a testimonial as the passenger record compiled for American Airlines, Inc., during 1936 by discriminating air travelers.

The 23 air transportation companies operating in the United States last year carried 1,020,999 revenue passengers . . . a splendid record. But just **ONE** of these 23 companies carried 255,324, more than one-fourth of the record total! That airline was **American Airlines, Inc.**

- NEW LOUNGE-CHAIR LUXURY
 - TALL-MAN LEG ROOM
 - "FIRST-CLASS" SERVICE
- BRING FAME TO AMERICAN'S
NEW GIANT "FLAGSHIP" FLIGHTS



NON-STOP

NEW YORK · CHICAGO

TWICE DAILY
BOTH WAYS

ONLY
3 hours
55 minutes
EASTBOUND

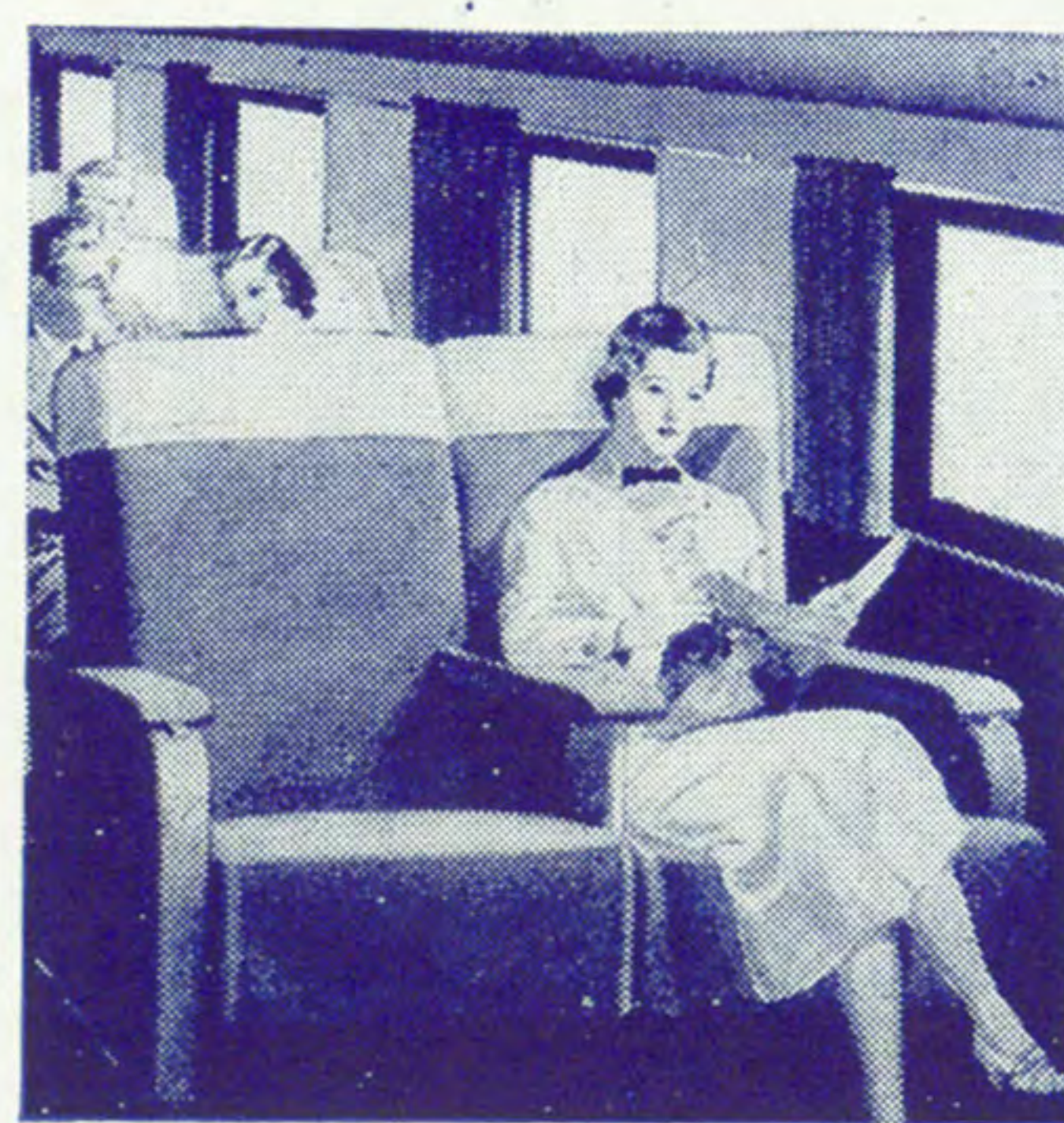
The
AMERICAN ARROW
5:00 PM from both cities

The
AMERICAN EAGLE
12:00 Noon from both cities

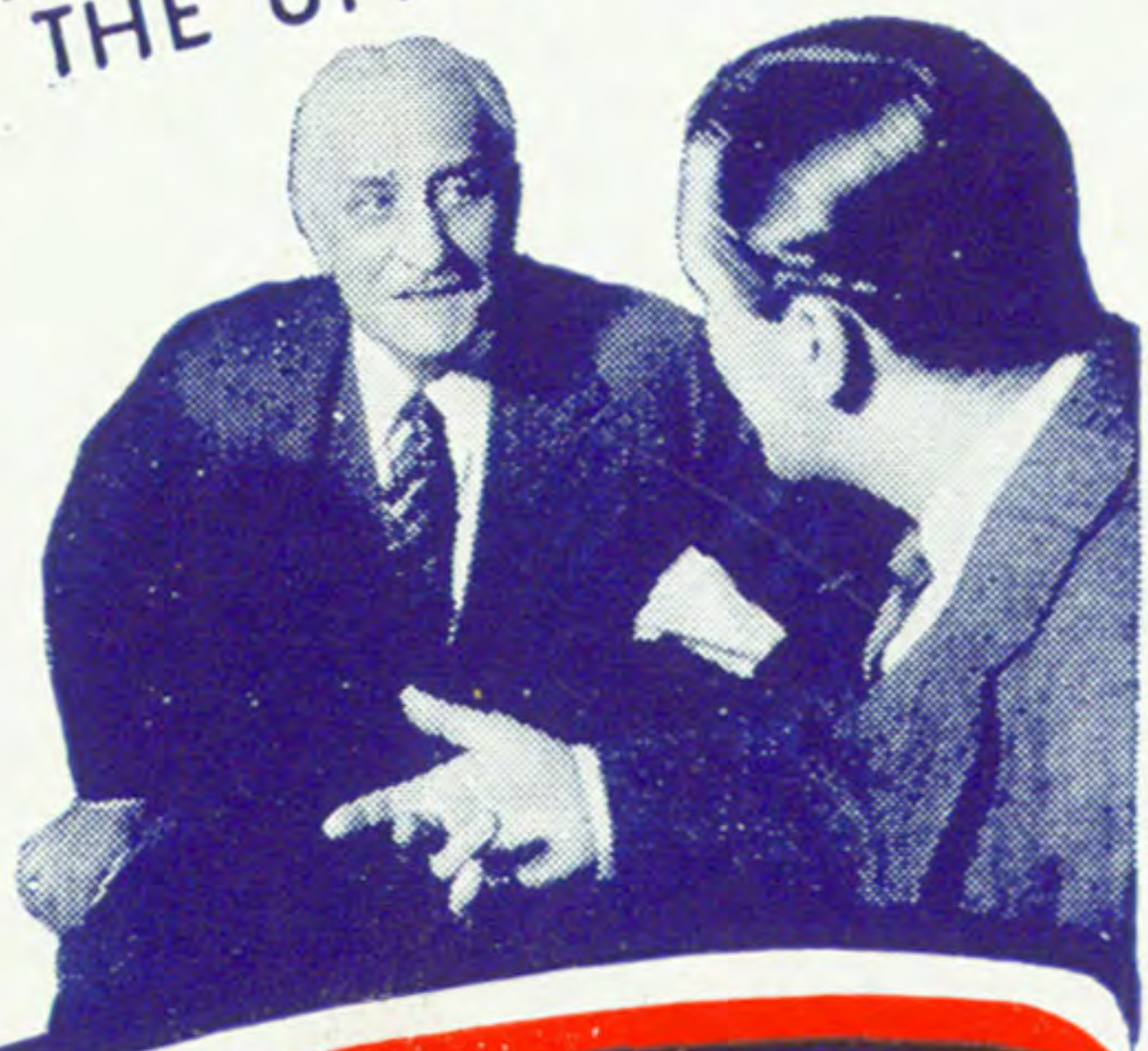
All of American's 16 daily flights between New York and Chicago are operated with new giant Flagship Club Planes; both the Non-Stop Services, and those flights via Detroit-Buffalo on the beautiful *Niagara Falls Route*.

The long range cruising record of American's great Flagships (over 2000 miles) makes them especially suitable for Non-Stop service.

Flagship Club Planes are even more remarkable, however, for their quietest cabins, the luxurious comfort of their new-type lounge chairs, the tall-man leg room, the niceties of "First-Class" service: delicious hot meals at no charge, a Remington typewriter carried on all flights, Lektro-Shavers for hurried travelers.



"MATCH YOU FOR
THE UPPER!"



FLAGSHIP SKYSLEEPERS - Z Z

COAST-TO-COAST

CHANGE ANOTHER OLD HABIT

In the past, overnight transportation has put a premium on lower berths. So travelers, as a matter of custom, have asked for lower berths. . . . Not so on Flagship Skysleepers!

Preference for *upper* berths equals that for *lower*s! Passengers find both berths extremely roomy and comfortable—base their choice on matters of personal opinion. Again, American Airlines, with the Nation's only air-sleeper services, has altered old railroad habits.



THE MILLION-PASSENGER LINE!



DID YOU KNOW THAT . . . ?

When you travel American Airlines between New York and Chicago, you have a choice of **three** ways for the same fare: **ONE**, Non-Stop; **TWO**, via Detroit and Buffalo (see *Niagara Falls*!); **THREE**, via Philadelphia, Washington, and Cincinnati. Go one way, return another for a varied sight-seeing trip at no extra cost.

And, when you fly **American** to the Pacific Coast, you may visit both **Los Angeles** and **San Francisco** for the same fare . . . if you start from Chicago, New York, Boston, Detroit, Cleveland, Washington and other eastern cities. Include both West Coast cities in your itinerary at no extra cost.

GENERAL INFORMATION

ANIMALS—Pets will be accepted as excess baggage under certain conditions. Consult AMA agent.

BAGGAGE—Thirty-five (35) pounds of baggage will be carried free on any ticket. Excess baggage carried upon special arrangements and shall be at the rate per pound of one-half of one per cent of the published air passenger fare, with a minimum charge of twenty-five cents, and the liability of the Carrier for loss of or damage to baggage and/or personal property is limited to the amount of One Hundred Dollars (\$100.00) unless a higher valuation be declared and an additional charge paid therefor. Excess valuation limited to \$1000.00 on each full fare ticket.

From 35 to 55 pounds of baggage will be carried free on tickets of passengers destined to Mexico, Central and South America using Pan American Airways. Inquire of ticket agent for full details.

135 pounds of baggage will be transported free—35 pounds by air and 100 pounds by Railway Express—on tickets of transoceanic passengers. Inquire of ticket agent for full details.

CHILDREN—Children under two years of age, when held in arms of parents or guardian, carried free. Children over two years of age will be charged full fare.

INSURANCE—Trip insurance is available at most airports.

PASSAGE, CANCELLATION BY COMPANY—The Company reserves the right to cancel bookings before passage or en route. Pilot may remove passengers from plane at any point on the route for safety or other cause. In all events the passenger's sole recourse shall be recovery of that portion of the fare equal to the distance untraveled.

PASSAGE, CANCELLATION BY PASSENGER—The purchaser may receive a refund for passage if canceled two hours prior to flight.

REFUNDS—Requests for refunds on tickets should be addressed to the Auditor of Ticket Accounts, American Airlines, Inc., 4848 West Sixty-Third St., Chicago, Ill.

RESERVATIONS—All space is reserved, though no definite seat assignments are made. Reservations will not be made except upon payment of fare.

ROUND TRIP FARES—10% reduction on all round-trip tickets if purchased before start of original trip. Return trip must be started within sixty days.

STOP-OVER—Ten (10) day stop-over will be allowed at any regular stop, provided reservation is made accordingly.

TIME-TABLES—These time-tables show the times at which planes may be expected to depart from and arrive at the several stations shown, and to connect with trains or other planes, but their departure, arrival, or connection at the time stated is not guaranteed. American Airlines reserves the right to vary from the time shown in this folder without notice to the public.

APRIL IS CHERRY BLOSSOM TIME IN WASHINGTON!



Now!.. fly "AMERICAN"

NON-STOP

CHICAGO-WASHINGTON

ONLY
3 HOURS 35 MINUTES
Eastbound

Enjoy NEW LOUNGE-CHAIR LUXURY IN GIANT CLUB PLANES . . .
FLAGSHIPS
LARGEST • QUIETEST
LONGEST-RANGE PLANES

American this month announces still another Non-Stop Flagship Service: between Chicago and Washington . . . with excellent connecting service to and from Philadelphia.

To busy travelers between the Capitol and Chicago, these new luxury flights provide an after business departure, a delicious complimentary dinner en route, and a full night's sleep at destination. And now American provides 3 convenient daily round trips Chicago-Washington: the only direct, through services, with no change of planes, between these cities. See Schedule on Page 9.

NON-STOP "The AMERICAN PRESIDENT"
Lv CHICAGO 5:05 PM Lv WASHINGTON 5:30 PM

CONDENSED Spring SCHEDULES
SEE FOLLOWING PAGES FOR COMPLETE SERVICE

NEW YORK-LOS ANGELES SKYSLEEPER SERVICE
SOUTHERN TRANSCONTINENTAL

WESTBOUND Read Down				TABLE A Also see Table 1		EASTBOUND Read Up						
No. 1 Daily	The Southerner Daily	American Mercury Daily	No. 11 Daily			No. 2 Daily	American Mercury Daily	The Southerner Daily	No. 12 Daily			
	6.10pm	3.20pm	10.20am	Lv Boston	(ET) Ar		2.18pm	6.48pm	9.48pm			
	Only Four Stops	Only Three Stops	8.40pm	5.10pm	12.20pm	Lv NEW YORK	"	Only Three Stops	11.20am	4.53pm	7.46pm	
				2.07pm	Lv WASHINGTON	"	Ar			3.21pm	5.59pm	
			2.21am	10.51pm	6.47pm	Lv MEMPHIS	(CT) Ar			4.42am	9.51am	12.03pm
4.05pm			x	1.51am	e10.14pm	Lv DALLAS	"		Lv	e10.22pm	2.16am	9.05am
4.30pm			5.28am	t	e10.39pm	Lv FT. WORTH	"		Lv	e 9.52pm	p	7.13am
6.54pm	7.44am			Ar EL PASO	(MT) Lv		5.08pm					
9.21pm		5.50am		Ar TUCSON	"	Lv	2.47pm					
10.15pm	10.11am			Ar PHOENIX	"	Lv	1.53pm		12.53am			
11.46pm	11.42am	7.51am		Ar LOS ANGELES	(PT) Lv		10.30am	4.30pm	9.30pm			
2.40am	2.30pm	11.24am		Ar San Francisco (UAL)	Lv	†7.00am	1.30pm	6.00pm				
	2.55pm	10.25am		Ar San Diego (UAL-WAE)	Lv	7.45am	3.05pm	5.30pm				
Day Douglas	Flagship Skysleeper	Flagship Skysleeper	Day Douglas	Equipment		Day Douglas	Flagship Skysleeper	Flagship Skysleeper	Day Douglas			

NEW YORK-CHICAGO

WESTBOUND Read Down										TABLE B Also see Table 4								EASTBOUND Read Up					
The Night Owl No. 7 Daily	No. 5 #	The Chi- cagoan No. 1 Daily	Amer- ican Arrow No. 17 Daily	Pacific North- wester No. 3 Daily	No. 5 Daily	No. 15★ Daily	Amer- ican Eagle No. 21 Daily	No. 9★ Daily		No. 10★ Daily	Man- hat- tan No. 12★ Daily	No. 6 Daily	Amer- ican Eagle No. 22 Daily	No. 2 Daily	The New Yorker No. 4 Daily	Amer- ican Arrow No. 16 Daily	Inter- national No. 6 #	The Night Owl No. 8 Daily					
1.00am	8.00pm	6.00pm	5.00pm	3.00pm	2.00pm	12.10pm	12.00N	9.00am	Lv NEW YORK	(E.T.) Ar	1.40pm	4.40pm	6.50pm	4.55pm	8.10pm	10.08pm	9.55pm	2.08am	6.08am				
5.32am	12.30am	10.30pm	8.45pm	7.33pm	8.02pm	4.43pm	8.02pm	3.45pm	Lv CHICAGO	(C.T.) Ar	8.00am	11.00am	11.30am	12.00N	2.30pm	4.30pm	5.00pm	8.30pm	12.30am				
			NON-STOP		Via Wash- ington		NON-STOP				Via Wash- ington	NON-STOP			NON-STOP								

N—Noon. ★—Via Beautiful Niagara Falls—a thrilling sight. #—Daily except Saturdays and holidays.

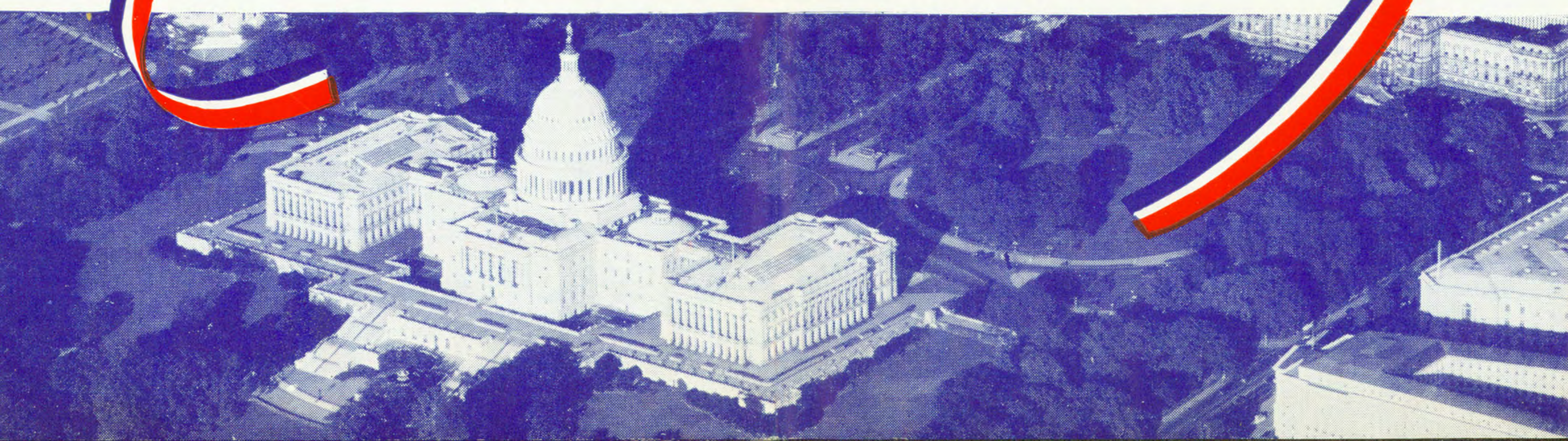
BOSTON-NEW YORK-WASHINGTON

SOUTHBOUND Read Down								TABLE C Also see Table 7 Eastern Time		NORTHBOUND Read Up										
No. 5 Daily	No. 23 Daily	No. 3 Daily	No. 7 Daily	No. 9 Daily	No. 27 Daily	No. 11 Daily	No. 1 Daily	No. 15 †		No. 2 Daily	No. 16 Daily	No. 4 †	No. 10 Daily	No. 24 Daily	No. 14 Daily	No. 12 Daily	No. 8 Daily	No. 20 Daily	No. 6 Daily	
8.30pm	6.10pm	5.30pm	4.20pm	3.20pm	1.20pm	12.20pm	10.20am	e8.00am	Lv BOSTON	Ar	8.18am	10.44am	11.48am	2.18pm	3.48pm	4.48pm	6.48pm	7.48pm	9.17pm	9.48pm
9.54pm	8.30pm	6.54pm	5.44pm	4.44pm	2.44pm	1.44pm	11.44am	9.24am	Lv NEW YORK	Lv	8.00am	8.30am	10.30am	1.00pm	2.30pm	3.30pm	5.30pm	6.30pm	7.15pm	8.30pm
12.00pm	10.30pm	8.30pm	6.30pm	4.30pm	3.50pm	2.55pm	1.55pm	11.00am	Ar WASHINGTON (EAL)	Lv	5.00am	5.00am	9.00am	10.30am	1.00pm	1.00pm	3.00pm	5.00pm	5.05pm	7.00pm

z—Via American Airlines. †—Daily except Sundays and holidays.

For explanation of reference marks see page 9

SPEED PARCELS AIR EXPRESS
DIVISION OF RAILWAY EXPRESS AGENCY





COAST-TO-COAST

GIANT FLAGSHIP SKYSLEEPERS OVERNIGHT AND OVER WEATHER ON THE ALL-YEAR SOUTHERN ROUTE



BOSTON—NEW YORK—LOS ANGELES PHILADELPHIA—WASHINGTON—NASHVILLE—MEMPHIS—TEXAS—ARIZONA

WESTBOUND Read Down								EASTBOUND Read Up							
TABLE 1				TABLE 1				TABLE 1				TABLE 1			
The Southern No. 7 Daily	No. 17 Daily	American Mercury No. 3 Daily	No. 5 Daily	No. 11 Daily	No. 1 Daily	No. 9 Daily	Mls.	No. 2 Daily	American Mercury No. 4 Daily	No. 16 Daily	No. 10 Daily	The Southern No. 8 Daily	No. 6 Daily	No. 12 Daily	
pm 6.10	pm 5.30	pm 3.20	pm 2.35	pm 12.20	pm 10.20	pm	Lv Boston (E.T.)	pm 2.18	pm	am 6.48	pm 6.48	pm 9.17	pm 9.17	pm 9.48	
6.43	-	3.04	3.04	-	-	-	Lv Providence	-	-	-	-	8.47	8.47	-	
7.23	-	-	3.44	-	-	-	Lv Hartford	-	-	-	-	8.17	8.17	-	
7.49	-	-	f	-	-	-	Lv New Haven	-	-	-	-	f	f	-	
8.40	-	5.10	2.00	12.20	1.00	a 7.10	Lv NEW YORK (Newark Airport) (E.T.)	11.20	-	a 4.20	4.53	6.50	7.46	-	
-	-	-	h 2.35	-	-	-	Lv PHILADELPHIA (Camden)	-	-	-	-	n 6.15	7.06	-	
-	-	-	3.25	-	-	-	Lv BALTIMORE	-	-	-	-	5.30	-	-	
-	-	-	3.50	-	1.55	a 8.30	Lv WASHINGTON	-	-	a 3.00	3.33	5.05	6.11	-	
-	-	-	-	2.07	-	9.00	Lv WASHINGTON	-	-	2.22	3.21	-	5.59	-	
-	-	-	-	-	-	10.17	Lv Lynchburg	-	-	-	-	-	-	-	
-	-	-	-	-	-	10.48	Lv Roanoke	-	-	-	-	-	-	-	
-	-	-	-	-	-	12.00	Lv Bristol	-	-	-	-	-	-	-	
-	-	-	-	-	-	11.55	Lv Knoxville (C.T.)	-	-	-	-	-	-	-	
-	-	-	-	5.01	-	1.05	Lv Nashville	-	-	-	-	-	-	-	
-	-	-	-	5.13	-	-	Lv Nashville	-	-	-	-	-	-	-	
-	-	-	-	6.42	-	-	Lv Memphis	4.54	8.05	10.03	12.13	-	-	-	
-	-	-	-	6.47	-	-	Lv Memphis	4.42	6.45	9.51	12.03	-	-	-	
-	-	-	-	8.04	-	-	Lv Little Rock	-	-	-	-	-	-	-	
-	-	-	-	10.14	-	-	Lv DALLAS	2.16	-	p	-	-	-	-	
-	-	-	-	10.19	-	-	Lv DALLAS	2.04	-	w	-	-	-	-	
-	-	-	-	10.39	-	-	Lv FT. WORTH	10.22	-	q	7.13	-	-	-	
-	-	-	-	-	-	-	Lv FT. WORTH	9.52	-	u	7.01	-	-	-	
-	-	-	-	-	-	-	Lv Abilene	8.53	-	-	-	-	-	-	
-	-	-	-	-	-	-	Lv Big Spring	8.00	-	-	-	-	-	-	
-	-	-	-	-	-	-	Lv El Paso (M.T.)	5.08	-	-	-	-	-	-	
-	-	-	-	-	-	-	Lv Douglas	3.38	-	-	-	-	-	-	
-	-	-	-	-	-	-	Lv Tucson	2.47	8.22	-	-	-	-	-	
-	-	-	-	-	-	-	Lv Phoenix	1.53	-	-	12.53	-	-	-	
-	-	-	-	-	-	-	Lv LOS ANGELES (Glendale) (P.T.)	10.30	4.30	-	9.30	-	-	-	
2.30	-	11.24	-	-	-	2.40	Lv San Francisco (UAL)	7.00	1.30	-	6.00	-	-	-	
2.55	-	10.25	-	-	-	-	Lv San Diego (UAL-WAE)	7.45	3.05	-	5.30	-	-	-	
pm	am	am	pm	pm	am	pm	-	am	pm	am	pm	pm	pm	am	

Boston—New York State—Cleveland—Texas—California							
WESTBOUND Read Down				EASTBOUND Read Up			
No. 19 Daily	No. 7 Daily	No. 21-11 Daily	No. 3 Daily	Mls.	No. 4-21 Daily	No. 18 Daily	No. 12 Daily
5.20	-	-	-	0	Lv BOSTON (E.T.)	10.39	-
6.41	-	-	-	159	Lv Albany	9.32	-
6.58	-	8.18	-	241	Lv Utica	8.41	-
7.48	-	-	-	290	Lv Syracuse	4.46	-
8.23	-	9.28	-	362	Lv Rochester	4.07	-
9.08	-	10.13	-	417	Lv Buffalo	3.34	-
9.50	-	10.55	-	614	Lv CLEVELAND	2.00	-
11.18	-	12.23	-	-	Lv CLEVELAND	1.24	-
-	-	1.30	-	726	Lv Columbus	12.32	-
-	-	2.29	-	828	Lv Cincinnati	11.39	-
-	-	3.20	-	828	Lv Cincinnati	11.27	-
-	-	3.32	-	919	Lv Louisville (C.T.)	9.44	-
-	-	4.24	-	1083	Lv Nashville	8.25	-
-	-	4.37	-	-	Lv Nashville	8.05	-
-	-	5.13	-	1290	Lv Memphis	6.45	-
-	-	6.42	-	-	Lv Memphis	4.42	-
-	-	8.04	-	1419	Lv Little Rock	11.07	-
-	-	10.51	-	1725	Lv DALLAS	2.16	-
-	-	1.39	-	1754	Lv DALLAS	2.04	-
-	-	1.51	-	-	Lv FT. WORTH	9.05	-
-	-	2.21	-	2300	Lv El Paso (M.T.)	8.22	-
-	-	3.04	-	2604	Lv Tucson	-	-
-	-	3.24	-	2714	Lv Phoenix	-	-
-	-	4.37	-	3083	Lv LOS ANGELES (P.T.)	4.30	-

BOSTON—NEW YORK— SOUTH TEXAS—MEXICO CITY							
SOUTHBOUND Read Down				NORTHBOUND Read Up			
No. 6 Daily	No. 10 Daily	No. 12 Daily	No. 8 Daily	Mls.	No. 10 Daily	No. 12 Daily	No. 8 Daily
pm 6.10	pm 3.20	pm 10.20	pm 2.18	0	Lv BOSTON (E.T.)	2.18	9.48
8.40	5.10	12.20	4.48	126	Lv NEW YORK	11.20	7.46
-	-	1.00	4.53	189	Lv PHILADELPHIA	-	7.06
-	-	2.07	3.21	267	Lv WASHINGTON	a 4.47	5.59
-	-	-	-	285	Lv CHICAGO (C.T.)	a 3.15	a 8.32
-	-	-	-	617	Lv DETROIT	-	-
-	-	-	-	728	Lv BUFFALO	-	-
-	-	-	-	1079	Lv CLEVELAND	-	-
-	-	-	-	1188	Lv Cincinnati	-	-
-	-	-	-	1480	Lv Louisville (C.T.)	-	-
-	-	-	-	1682	Lv Memphis	-	-
-	-	-	-	1783	Lv DALLAS	-	-
-	-	-	-	1990	Lv FT. WORTH	-	-
-	-	-	-	2259	Lv Houston (BNF)	-	-
-	-	-	-	-	Lv Galveston	-	-
-	-	-	-	-	Lv San Antonio	-	-
-	-	-	-	-	Lv Corpus Christi	-	-
-	-	-	-	-	Lv Brownsville	-	-
-	-	-	-	-	Lv MEXICO CITY (PAA)	-	-

For explanation of reference marks see page 9

NEW YORK—CHICAGO NEW YORK—BUFFALO—DETROIT—CHICAGO

TABLE 4											
Mls.	No. 19 Daily	No. 9 Daily	No. 23 Daily	American Eagle No. 21 Daily	No. 15 Daily	Pacific Northwester No. 3 Daily	No. 25 Daily	American Arrow No. 17 Daily	The Chicagoan No. 1 Daily	No. 5 Daily	The Night Owl No. 7 Daily
0	★—Via Niagara Falls and Gorge	9.00am	10.45am	12.00N	12.10pm	3.00pm	-	5.00pm	6.00pm	8.00pm	1.00am
282	Lv NEW YORK (Newark) (E.T.)	11.00am	1.51pm	-	2.10pm	5.00pm	-	-	8.00pm	10.00pm	3.00am
504	Lv BUFFALO	11.10am	-	-	2.20pm	5.10pm	-	-	8.10pm	10.10pm	3.10am
504	Lv DETROIT	12.42pm	-	-	3.5pm	6.42pm	-	-	9.39pm	11.39pm	4.40am
751	Lv DETROIT	87.30am	-	-	4.02pm	6.52pm	-	-	9.49pm	11.49pm	4.50am
751	Lv CHICAGO	+7.49am	1.33pm	3.45pm	8.10pm	8.51pm	8.45pm	10.30pm	12.30am	5.32am	-

NOTE—Stewardesses aboard all Flagship flights.

CHICAGO—DETROIT—BUFFALO—NEW YORK

TABLE 4											
Mls.	No. 10 Daily	The Manhattan No. 12 Daily	American Eagle No. 22 Daily	No. 24 Daily	No. 2 Daily	No. 26 Daily	New Yorker No. 4 Daily	American Arrow No. 16 Daily	No. 14 Daily	International No. 6 Daily	The Night Owl No. 8 Daily
0	★—Via Niagara Falls and Gorge	8.00am	11.00am	12.00N	2.30pm	3.00pm	4.30pm	5.00pm	6.30pm	8.30pm	12.30am
247	Lv CHICAGO (C.T.)	10.27am	1.27pm	-	4.57pm	6.43pm	6.57pm	7.07pm	9.18pm	10.57pm	2.57am
469	Lv DETROIT (E.T.)	10.37am	1.37pm	-	5.07pm	6.26pm	8.24pm	8.34pm	-	12.24am	3.07am
469	Lv DETROIT	11.56am	2.56pm	-	6.26pm	8.34pm	8.34pm	10.08pm	-	12.34am	4.24am
751	Lv BUFFALO	12.06pm	3.06pm	3.45pm	8.10pm	10.08pm	9.55pm	-	-	2.08am	6.08am
751	Lv NEW YORK (Newark) (E.T.)	1.40pm	4.40pm	6.42pm	8.10pm	-	-	-	-	-	-

NOTE—Stewardesses aboard all Flagship flights.

CHICAGO—TEXAS—LOS ANGELES ST. LOUIS—OKLAHOMA—TEXAS—ARIZONA

TABLE 5											
The Longhorn No. 3 Daily	No. 7 Daily	The Lone Star No. 1 Daily	Mls.	No. 8 Daily	No. 6 Daily	The Lone Star No. 8 Daily	The Longhorn No. 4 Daily				
5.20	4.20	8.45	0	Lv CHICAGO (C.T.)	5.35	10.46	11.35				
6.41	5.32	-	126	Lv Peoria	9.44	-	-				
6.58	6.14	-	189	Lv Springfield	9.02	-	-				
7.00	6.58	10.25	267	Lv ST. LOUIS	8.15	1.12	9.52				
7.10	7.08	10.35	285	Lv E. ST. LOUIS	8.05	1.02	9.42				
9.45	7.28	-	617	Lv Joplin	-	-	-				
10.45	1.10	1.10	728	Lv Tulsa	10.47	7.27	7.27				
12.01	2.10	2.10	1079	Lv Oklahoma City	9.45	6.25	6.25				
12.26	3.26	3.26	1188	Lv DALLAS	8.20	5.00	5.00				
1.51	3.51	3.51	1480	Lv FT. WORTH	7.55	4.35	4.35				
2.21	4.05	4.05	1682	Lv DALLAS	10.22	2.04	2.04				
5.55	4.30	4.30	1783	Lv FT. WORTH	9.52	7.01	7.01				
5.16	5.28	5.28	1990	Lv Abilene	8.53	-	-				
-	7.44	7.44	2259	Lv Big Spring	8.00	-	-				
-	8.22	8.22	-	Lv EL PASO (M.T.)	5.08	-	-				
-	9.21	9.21	-	Lv Douglas	3.38	-	-				
-	10.11	10.11	-	Lv Tucson	2.47	-	-				
-	11.42	11.42	-	Lv Phoenix	1.53	-	-				
-	11.42	11.42	-	Lv LOS ANGELES (P.T.)	10.30	-	-				

Equipment—Trips 6 and 7 Chicago-St. Louis Stinson A, all others Douglas and Flagship Skysleepers. Stewardesses on all Douglas and Flagship flights.

For explanation of reference marks see page 9

BOSTON—ALBANY—CLEVELAND NEW YORK—ROCHESTER—CHICAGO

TABLE 6											
WESTBOUND Read Down						EASTBOUND Read Up					
No. 19-5 Daily	No. 3-25 Daily	No. 21-9 Daily	No. 23-15 Daily	Mls.	No. 12-20 Daily	No. 12-24 Daily	No. 26-4 Daily	No. 2-18 Daily			
pm 5.20	pm	am	am	0	Lv BOSTON (E.T.)	pm	pm	pm			
6.41	-	-	-	159	Lv Albany	6.49	6.42	10.08			
6.50	-	7.00	10.45	241	Lv NEW YORK	5.48	-	10.28			
-	-	8.10	-	290	Lv Albany	-	-	9.27			
-	-	-	-	362</							



FLAGSHIPS • NON-STOP

NEW YORK
CHICAGO

NEW YORK
BOSTON

CHICAGO
WASHINGTON



BOSTON — NEW YORK — WASHINGTON

SOUTHBOUND Read Down											NORTHBOUND Read Up											
No. 5 Daily	No. 23 Daily	No. 3 Daily	No. 7 Daily	No. 9 Daily	No. 21 Daily	No. 27 Daily	No. 11 Daily	No. 1 Daily	No. 19 †	The Early Bird No. 15 †	TABLE 7											
pm 8.30	pm 6.10	pm 5.30	pm 4.20	pm 3.20	pm 2.35	pm 1.20	pm 12.20	am 10.20	am 9.30	am 8.00	Eastern Time											
pm 8.30	pm 6.43	pm 5.30	pm 4.20	pm 3.20	pm 2.35	pm 1.20	pm 12.20	am 10.20	am 9.30	am 8.00	Lv BOSTON	Ar 8.18	am 10.44	am 11.48	pm 2.18	pm 4.09	pm 3.48	pm 4.48	pm 6.48	pm 7.48	pm 9.17	pm 9.48
pm 9.54	pm 7.49	pm 6.54	pm 5.44	pm 4.44	pm 3.44	pm 2.44	pm 1.44	pm 11.44	pm 11.01	pm 9.24	Lv Providence	Ar 10.10	am 10.10	am 9.40	pm 3.35	pm 3.05	pm 3.30	pm 3.30	pm 5.30	pm 6.30	pm 8.47	pm 8.17
pm 10.10	pm 8.40	pm 7.10	pm 5.10	pm 3.10	pm 2.00	pm 12.20	pm 9.40	pm 7.20	pm 6.50	pm 5.00	Lv NEW YORK (Newark)	Ar 6.50	am 10.20	am 11.50	pm 2.20	pm 4.53	pm 6.20	pm 6.50	pm 7.46	pm 8.20	pm 11.30	pm 10.00
pm 12.00	pm 10.25	pm 8.30	pm 6.30	pm 4.30	pm 3.50	pm 1.55	pm 11.00	pm 9.24	pm 8.30	pm 7.15	Lv Philadelphia	Ar 6.15	am 10.20	am 11.50	pm 2.20	pm 4.53	pm 6.20	pm 6.50	pm 7.46	pm 8.20	pm 11.30	pm 10.00
pm 12.00	pm 10.25	pm 8.30	pm 6.30	pm 4.30	pm 3.50	pm 1.55	pm 11.00	pm 9.24	pm 8.30	pm 7.15	Lv Baltimore	Ar 5.25	am 10.20	am 11.50	pm 2.20	pm 4.53	pm 6.20	pm 6.50	pm 7.46	pm 8.20	pm 11.30	pm 10.00
pm 12.00	pm 10.25	pm 8.30	pm 6.30	pm 4.30	pm 3.50	pm 1.55	pm 11.00	pm 9.24	pm 8.30	pm 7.15	Lv WASHINGTON	Ar 5.00	am 10.20	am 11.50	pm 2.20	pm 4.53	pm 6.20	pm 6.50	pm 7.46	pm 8.20	pm 11.30	pm 10.00

Equipment—Boston-New York Douglas Flagships, except trips 16, 18, 19, 20, 21 and 23 Trimotor "A" Stinsons; New York-Washington Douglases and Lockheed Electras. Stewardesses aboard Boston-New York Flagship trips and AMA New York-Washington.

BOSTON — CHICAGO VIA NEW YORK

SOUTH and WEST Read Down											EAST and NORTH Read Up												
No. 5-7 Daily	No. 3-5 Daily	No. 9-1 Daily	No. 21-1 Daily	No. 9-17 Daily	No. 27-3 Daily	No. 1-15 Daily	No. 1-21 Daily	No. 19-15 †	No. 19-21 †	TABLE 8													
pm 8.30	pm 5.30	pm 3.20	pm 2.35	pm 3.20	pm 2.35	pm 1.20	am 10.20	am 9.30	am 8.00	Lv BOSTON	Ar 8.18	am 10.44	am 11.48	pm 2.18	pm 4.09	pm 3.48	pm 4.48	pm 6.48	pm 7.48	pm 9.17	pm 9.48		
pm 9.54	pm 6.54	pm 4.44	pm 4.47	pm 4.44	pm 4.47	pm 2.44	pm 11.44	pm 11.01	pm 9.24	Lv Providence	Ar 10.10	am 10.10	am 9.40	pm 3.35	pm 3.05	pm 3.30	pm 3.30	pm 5.30	pm 6.30	pm 8.47	pm 8.17		
pm 1.00	pm 8.00	pm 6.00	pm 5.00	pm 3.00	pm 12.10	pm 12.00 N	pm 12.10	pm 12.00 N	pm 12.00 N	Lv NEW YORK	Ar 6.08	am 1.40	am 4.40	am 4.55	am 4.40	am 4.55	am 8.10	am 8.10	am 10.20	am 10.20	am 11.30	am 10.00	
pm 3.00	pm 10.00	pm 8.00	pm NON-STOP	pm 5.00	pm 2.10	pm NON-STOP	pm 2.10	pm NON-STOP	pm 3.06	Lv Buffalo	Ar 4.34	am 12.06	am 3.06	am NON-STOP	am 3.06	am NON-STOP	am 6.36	am 6.36	am 8.47	am 8.17	am 11.30	am 10.00	
pm 4.40	pm 11.39	pm 9.39	pm 8.45	pm 7.33	pm 4.43	pm 3.45	pm 4.43	pm 3.45	pm 11.00	Lv Detroit	Ar 3.07	am 10.37	am 1.37	am 1.37	am 1.37	am 1.37	am 5.07	am 5.07	am 8.17	am 8.17	am 11.30	am 10.00	
pm 5.32	pm 12.30	pm 10.30	pm 8.45	pm 7.33	pm 4.43	pm 3.45	pm 4.43	pm 3.45	pm 11.00	Lv CHICAGO	Ar 12.30	am 8.00	am 11.00	am 12.00	am 12.00	am 2.30	am 2.30	am 4.47	am 4.17	am 7.30	am 7.00	am 10.00	am 8.30

Equipment—Boston-New York Flagship Club Planes, except trips 16, 18, 19, 20, 21 and 23 Trimotor "A" Stinsons; New York-Chicago Flagship Club Planes. Stewardesses aboard all Flagship trips.

NEW YORK — CLEVELAND — CINCINNATI — NASHVILLE

SOUTHBOUND Read Down				NORTHBOUND Read Up			
No. 7 Daily	No. 1-11 Daily	See Table 11 for Additional New York-Cincinnati Service		No. 4-12 Daily	No. 12-22 Daily		
pm 4.30	am 8.30	Lv NEW YORK (Ual) (E.T.)	Ar 5.13	pm 5.13	pm 10.00		
pm 7.20	pm 11.20	Lv CLEVELAND	Ar 2.27	pm 2.27	pm 7.45		
pm 9.15	pm 1.30	Lv CLEVELAND	Ar 1.24	pm 1.24	pm 6.59		
pm 10.14	pm 2.29	Lv Columbus	Ar 12.32	pm 12.32	pm 6.07		
pm 11.05	pm 3.20	Lv Cincinnati	Ar 11.39	pm 11.39	pm 5.14		
pm 11.17	pm 3.32	Lv Cincinnati	Ar 11.27	pm 11.27	pm 5.02		
pm 11.09	pm 3.24	Lv Louisville (C.T.)	Ar 9.44	pm 9.44	pm 3.19		
pm 12.22	pm 4.37	Lv NASHVILLE	Ar 8.25	pm 8.25	pm 2.00		

Equipment—Douglases Cleveland-Nashville. Stewardesses aboard all trips.

WORLD-WIDE AIR SERVICE American Airlines, Inc. • Airship Hindenburg

(Effective May 6, 1937)

Europe—American Airlines, Inc., to Lakehurst, N. J., providing exclusive connection with Airship Hindenburg for Frankfurt a'Main, Germany, where the Deutsche Lufthansa and connecting lines afford air services to all Europe.

Africa—From Frankfurt, via Deutsche Lufthansa, connecting with Imperial Airways and associated lines for Egypt, the Sudan, East Africa and the Transvaal.

The Orient—Imperial Airways to India, Burma, Siam, Malay Peninsula, China, Dutch East Indies and Australia. Air France to Syria, Iraq, Persia, India, Burma, Siam and Indo-China. K. L. M. and K. N. I. L. M. (Royal Dutch Air Lines) to Egypt, Arabia, India, Burma, Siam, Straits Settlements and the Dutch East Indies.

American Airlines, Inc. • Pan American Airways

Mexico—Central and South America—American Airlines to Dallas or Ft. Worth, and via connecting air line to Brownsville, Tex., thence south via Pan American Airways.

Trans-Pacific—Honolulu, Wake Island, Midway, Guam, Manila, Hongkong.

For explanation of reference marks see page 9

NEW YORK — Twin Cities — SEATTLE MONTREAL — BOSTON — WINNIPEG — VANCOUVER

WESTBOUND Read Down						EASTBOUND Read Up						
No. 5 †	The Night Owl No. 7	American Arrow No. 17 Daily	Pacific Northwest No. 3 Daily	No. 15 † Daily	American Eagle No. 21 Daily	TABLE 10						
pm 5.30	pm 8.30	pm 2.15	pm 3.20	pm 12.20	pm 10.20	★ Flies Over Niagara Falls						
pm 8.00	pm 1.00	pm 5.00	pm 3.00	pm 12.10	pm 12.00	Lv Montreal	Ar 11.10	pm 6.48	pm 10.08	pm 9.55	pm 2.08	pm 8.10
pm 10.10	pm 3.10	pm 5.10	pm 2.20	pm 12.10	pm 12.00	Lv NEW YORK (Newark)	Ar 6.08	pm 4.40	pm 10.08	pm 9.55	pm 2.08	pm 8.10
pm 11.49	pm 4.50	pm 6.52	pm 4.02	pm 12.30	pm 12.30	Lv Buffalo	Ar 4.24	pm 2.56	pm 8.24	pm NON-STOP	pm 12.24	pm 6.26
pm 12.30	pm 5.32	pm 8.45	pm 7.33	pm 4.43	pm 3.45	Lv Detroit	Ar 2.57	pm 1.27	pm 6.57	pm NON-STOP	pm 10.57	pm 4.57
						Lv CHICAGO	Ar 12.30	pm 11.00	pm 4.30	pm 5.00	pm 8.30	pm 2.30

Equipment—New York-Chicago, Flagship Club planes; Chicago-Pacific Coast via NWA, Lockheed Electras; via UAL, Boeings and Douglases.

CHICAGO — WASHINGTON CINCINNATI — NEW YORK

EASTBOUND Read Down				WESTBOUND Read Up			
American President No. 20 †	No. 12 Daily	No. 6 Daily	No. 2 Daily	TABLE 11			
pm 5.05	pm 11.30	pm 12.39	pm 2.28	See Table 9 for Additional New York-Cincinnati Service			
pm 9.40	pm 6.11	pm 5.05	pm 2.20	Lv CHICAGO	Ar 2.06	pm 8.02	pm 8.25
pm 10.55	pm 7.06	pm 5.25	pm 2.20	Lv Indianapolis	Ar 12.53	pm 6.54	pm 7.00
pm 11.35	pm 7.46	pm 6.50	pm 3.45	Lv CINCINNATI	Ar 12.55	pm 7.00	pm 6.48
				Lv CINCINNATI	Ar 12.45	pm 6.48	pm 6.48
				Lv WASHINGTON	Ar 11.34	pm 4.00	pm 5.30
				Lv WASHINGTON	Ar 9.15	pm 4.00	pm 4.30
				Lv Baltimore	Ar 8.30	pm 3.50	pm 3.25
				Lv Philadelphia	Ar 1.00	pm 2.35	pm 2.00
				Lv NEW YORK	Ar 12.20	pm 2.00	pm 3.10

Stewardess Service on All Trips Except Trip 1 and Trip 2.

r—Douglas plane connects Sleeper Flagship from New York at Dallas and arrives Ft. Worth 2:40 a.m. t—Douglas plane leaves Ft. Worth 1:15 a.m. to connect Sleeper Flagship leaving Dallas 1:51 a.m. for Los Angeles. u—Douglas plane connects Sleeper Flagship from Los Angeles at Dallas and arrives Ft. Worth 2:40 a.m. v—Stops only to discharge passengers from Boston or to pick up passengers for beyond Newark. w—Limousine connects Sleeper Flagship from Los Angeles at Ft. Worth and arrives American Airlines City Ticket Office, Baker Hotel, Dallas 8:05 a.m. x—Limousine leaves American Airlines City Ticket Office, Baker Hotel, Dallas 4:20 a.m. to connect Sleeper Flagship leaving Ft. Worth 5:28 a.m. for Los Angeles. y—Service will be established to Joplin, Mo., on or about April 25th— inquire of any American Airlines office for information. z—Via American Airlines.

NEW YORK — MONTREAL — OTTAWA

NORTHBOUND Read Down				SOUTHBOUND Read Up			
AMA No. 19 Daily	AMA No. 21 Daily	No. 2 †	Mls.	TABLE 12			
pm 5.40	pm 7.00	pm 8.30	0	Canadian Colonial Airways			
pm 6.50	pm 8.10	pm 9.40	142	Lv NEW YORK	Ar 10.28	pm 4.46	pm 6.49
				Lv Albany	Ar 9.27	pm 3.45	pm 5.48
				Lv Albany	Ar 9.50	pm 3.30	pm 5.48
				Lv MONTREAL	Ar 11.10	pm 2.15	pm 4.10
				Lv MONTREAL	Ar 11.35	pm 1.55	pm 3.50
				Lv OTTAWA	Ar 12.25	pm 1.10	pm 3.10

Equipment—Ottawa, Montreal, Stinson Reliant; Montreal, Albany, Vulture; All Others "A" Stinsons.

LOS ANGELES — MIAMI

EASTBOUND Read Down				WESTBOUND Read Up			
No. 8 Daily	No. 2 Daily	Mls.	TABLE 13	No. 1 Daily	No. 3 Daily		
pm 9.30	pm 10.30	0	Stewardess Service	pm 11.46	pm 7.51		
pm 12.53	pm 1.53	376	Lv LOS ANGELES (P.T.)	Ar 10.15	pm 5.50		
pm 1.47	pm 2.47	486	Lv Phoenix (M.T.)	Ar 9.21	pm 5.50		
pm 2.47	pm 3.47	790	Lv Tucson	Ar 8.54	pm 5.50		
pm 3.47	pm 4.47	1336	Lv El Paso	Ar 8.25	pm 5.50		
pm 4.47	pm 5.47	1366	Lv Ft. Worth (C.T.)	Ar 4.25	pm 5.50		
pm 5.47	pm 6.47	1366	Lv DALLAS	Ar 4.05	pm 1.51		
			Delta Air Lines	No. 1 Daily	No. 3 Daily		
pm 9.30	pm 11.00	1366	Lv DALLAS	Ar 2.05	pm 1.30		
pm 10.12	pm 12.14	1464	Lv Tyler	Ar 1.21	pm 1.30		
pm 11.02	pm 12.14	1556	Lv Shreveport	Ar 12.28	pm 12.13		
pm 11.53	pm 1.05	1656	Lv Monroe	Ar 11.35	pm 11.20		
pm 12.47	pm 1.59	1763	Lv Jackson	Ar 10.40	pm 10.25		
pm 3.47	pm 4.45	1996	Lv Birmingham	Ar 8.35	pm 8.35		
pm 3.50	pm 4.45	2130	Lv ATLANTA	Ar 7.30	pm 8.35		
pm 9.30	pm 11.55	2413	Lv Jacksonville	Ar 10.40	pm 8.16		
pm 11.55	pm 2757	2757	Lv Miami	Ar 8.16	pm 8.16		

NOTE—Stewardesses on Los Angeles-Dallas flights.

EXPLANATION OF REFERENCE MARKS

AM Times in Light Face; PM Times in Dark Face. AMA—American Airlines. CCA—Canadian Colonial Airways. EAL—Eastern Air Lines. NWA—Northwest Airlines. UAL—United Air Lines. *—Daily. †—Daily except Sundays and holidays. ‡—Daily except Sundays. §—Daily except Saturdays and holidays. ○—Except Saturdays and Sundays. §—Daily except Saturday and days before holidays. □—Daily except Saturdays. *—Complimentary meal aloft. —Complimentary light breakfast aloft. —No local passengers or express carried between Hartford-New Haven. ★—Flies over Niagara Falls. —Stops only to pick up passengers or to discharge passengers beyond Chicago. †—Stops only to discharge passengers or to pick up passengers for beyond Chicago. —Seattle-Vancouver service operated by Canadian Airways, Ltd. a—Via connecting air line. c—Limousine connects Sleeper Flagship from New York at Ft. Worth and arrives American Airlines City Ticket Office, Baker Hotel, Dallas 6:20 a.m. d—Daily except Mondays. e—Arrival time. f—Flag Stop. g—Daily except Mondays and days after holidays. h—Stops to discharge passengers from beyond New York or pick up passengers for Cincinnati and beyond. i—Via Southern Pacific Railroad. ii—Via Santa Fe Railroad. j—Via M-K-T Railroad. k—Daily except Saturdays, Sundays and holidays. m—No local service between St. Louis and East St. Louis. n—Stops to discharge passengers from Cincinnati and beyond, connecting passengers from Lynchburg and beyond, or pick up passengers for beyond New York. p—Limousine leaves American Airlines City Ticket Office, Baker Hotel, Dallas 6:05 a.m. to connect Sleeper Flagship leaving Ft. Worth 7:13 a.m. for New York. q—Douglas plane leaves Ft. Worth 1:15 a.m. to connect Sleeper Flagship leaving Dallas 2:16 a.m. for New York.



THE MILLION-PASSENGER LINE

GENERAL SALES OFFICE: —20 N. Wacker Drive, Chicago

C. R. Smith, Vice President-Sales
 J. HERMAN THEILIG, Manager-Agency and Foreign Department
 WILLIAM J. DUNN, Publicity Director

CABLE ADDRESS: AMAIR

CHARLES A. RHEINSTROM, Vice President-Sales
 R. S. MAUGHAM, Manager-Air Mail and Express
 M. D. MILLER, Manager-National Accounts

INFORMATION—RESERVATIONS—TICKETS

ABILENE, TEXAS. Reservations, Municipal Airport. Tel. 7021
 Ticket Office, Hilton Hotel Lobby. Tel. 3261
AKRON, OHIO. Reservations, Municipal Airport. Tel. Jefferson 5151
ALBANY, N. Y. Reservations, Albany Airport. Tel. 2-4466 or 2-4467
 Ticket Office, 83 State Street. Tel. 5-2141
ANN ARBOR, MICH. P. S. Randall, Gen'l Agent, 12 Nickels Arcade. Tel. 6040
 Passenger Terminal, Municipal Airport. Tel. Riverside 06940
BALTIMORE, MD. Reservations, Logan Field. Tel. 9270
 Ticket Office, 213 N. Charles St. Tel. Plaza 1150
BATTLE CREEK, MICH. Ticket Office, Auto Club. Tel. 2-5121
 Passenger Terminal, Kellogg Airport. Tel. 2-3914
BIG SPRING, TEXAS. Passenger Terminal, American Airlines Field. Tel. 1160
BOSTON, MASS. Reservations, Boston Airport. Tel. East Boston 2040
 Ticket Office, 140 Federal St. Tel. Liberty 6233
BRISTOL, VA. Passenger Terminal Bristol Airport. Tel. Bristol 1776
 Ticket Office, General Shelby Hotel. Tel. 1718
BUFFALO, N. Y. Reservations, Buffalo Airport. Tel. Fillmore 4044
 Traffic Office, Statler Hotel. Tel. Washington 3861
CAMDEN, N. J. Reservations, Central Airport. Tel. 5690
CHARLESTON, W. VA. Passenger Terminal, Wertz Field. Tel. South 4523
CHICAGO, ILL. Reservations, Municipal Airport. Tel. Hemlock 5000
 Ticket Office, 312 S. Michigan Ave. Tel. Harrison 2627
 Ticket Office, Board of Trade Bldg., 145 W. Jackson Blvd.
 Telephone Harrison 1177
 Randolph 7500

CINCINNATI, OHIO. Reservations, Lunken Airport. Tel. East 4700
 Ticket Office, 419 Walnut St. Tel. Parkway 2171
CLEVELAND, OHIO. Reservations, Cleveland Airport. Tel. Clearwater 3300
 Ticket Office, 839 Union Trust Bldg. Tel. Cherry 3900
COLUMBUS, OHIO. Ticket Office, 20 E. Broad Street. Tel. Main 3303
 Pass. Terminal, Port Columbus Airport—Evergreen 4618
CORNING, N. Y. Pass. Term. (Elmira) Amer. Airlines Field. Tel. Elmira 4568
DALLAS, TEXAS. Ticket Office, 1404 Commerce St. Tel. 2-8747
 Passenger Terminal, Love Field. Tel. 5-3181
DETROIT, MICH. Reservations, City Airport. Tel. Pingree 7000
 Ticket Office, 1251 Washington Blvd. Tel. Cadillac 5221
DOUGLAS, ARIZ. Passenger Terminal, International Airport. Tel. 160
EAST ST. LOUIS, ILL. Passenger Terminal, Curtiss Airport. Tel. Bridge 8700
ELKINS, W. VA. Passenger Terminal, Municipal Airport. Tel. 223
ELMIRA, N. Y. Pass. Terminal, American Airlines Field. Tel. 4568
EL PASO, TEXAS. Reservations, American Airlines Field. Tel. 221
FT. WORTH, TEXAS. Reservations, Meacham Field. Tel. 6-1183
 Ticket Office, Texas Hotel. Tel. 2-7218
HARTFORD, CONN. Passenger Terminal, Rentschler Field. Tel. 8-4133
HOLLYWOOD, CALIF. Ticket Office, 6733 Hollywood Blvd. Tel. Hollywood 3914
HONOLULU, HAWAII. Inter-Island Steam Navigation Co. Ltd.,
 Fort and Merchant Street, Tel. 4941

HOUSTON, TEXAS. Ticket Office, Texas State Hotel Lobby. Tel. Capitol 5259
 Passenger Terminal, Municipal Airport, Tel. Belmont 4979
INDIANAPOLIS, IND. Traffic Office, 609 Merchants Bank Bldg., Tel. Lincoln 1190
 Passenger Terminal, Reynolds Airport. Tel. 5275
JACKSON, MICH. Passenger Terminal, Municipal Airport. Tel. 7342
KALAMAZOO, MICH. Terminal Office, Island Airport. Tel. 2-2218
KNOXVILLE, TENN. Reservations, Municipal Airport. Tel. 6822
 Ticket Office, Albert Pike Hotel. Tel. 5211
LITTLE ROCK, ARK. Ticket Office, 512 West 6th Street. Tel. MICHigan 8822
LOS ANGELES, CALIF. Hollywood Tick. Off. 6733 Hollywood Blvd. HOLlywood 3914
 Glendale, Calif. Tel. Omaha 3-4081
 Passenger Terminal, Grand Central Air Terminal.

—ALSO—
 American Express; "Ask Mr. Foster Travel Service"; Thos. Cook & Son; Raymond-Whitcomb; other Travel Bureaus and the Transportation Desk of Leading Hotels.

TRANSPORTATION TO AND FROM AIRPORTS

If Ground Transportation is desired passengers must inform Ticket Agent at time reservation is made

City	Airport	Miles	Minutes	Fare
Abilene	Municipal	3 1/2 E	15	\$0.50
Albany	Municipal	9 NW	30	1.00
Baltimore	Logan Field		40	.75
Big Spring	American	2 1/2 W	10	(f) .50
Boston	Municipal	1 E	25	.50
Bristol	Municipal	4 E	20	.50
Buffalo	Municipal	7 E	40	.75
Charleston	Wertz	9 W	50	.75
Chicago	Municipal	12 SW	50	.75
Cincinnati	Lunken	6 E	40	.50
Cleveland	Municipal	8 1/2 SW	40	.75
Columbus	Pt. Columbus	8 E	40	.75
Dallas	Love	6 N	30	.50
Detroit	City	6 NE	35	.75
Douglas	Internl	2 1/2 E	10	1.00
East St. Louis	Curtiss	1 S	15	.50
Elkins	Municipal	3 S	10	.50
Elmira	American	7 NW	25	1.00
El Paso	American	7 NE	25	.75
Ft. Worth	Meacham	5 N	30	.50
Hartford	Rentschler	3 SE	25	(d) 1.00
Indianapolis	Municipal	8 1/2 SW	35	.75
Knoxville	Island	2 1/2 E	20	.50
Little Rock	Municipal	1 1/2 SE	10	.50
Los Angeles, (g)	Grand Cent.	14 NW	60	.75
Louisville	Bowman	6 SE	30	.75
Lynchburg	Preston Glenn	8 S	20	.50
Memphis	Municipal	9 SE	40	.75
Montreal, (h)	St. Hubert	12 1/2 E	45	1.00

LOUISVILLE, KY. Ticket Office, Kentucky Hotel. Tel. Wabash 2813
 Reservations, Bowman Field. Tel. Highland 4600
 Passenger Terminal, Preston Glenn Airport. Tel. 546
LYNCHBURG, VA. Reservations, Municipal Airport. Tel. 3-2340
MEMPHIS, TENN. Ticket Office, Hotel Peabody. Tel. 8-3245
MEXICO CITY, MEX. Wells Fargo & Co., Av. Madero No. 14
 Tel. Eric 2-93-90 or Mex L31-00
MILWAUKEE, WIS. Ticket Office, 203 East Wisconsin. Tel. Daly 6668
MINNEAPOLIS, MINN. Ticket Office, 711 Marquette Ave. Tel. Atlantic 8822
MONTREAL, QUE., CAN. Reservations, Hotel Mount Royal. Tel. Plateau 2501
 Passenger Terminal, St. Hubert Airport, Tel. Longueuil 525
NASHVILLE, TENN. Ticket Office, Hermitage Hotel. Tel. 5-6411
 Reservations, Sky Harbor Airport. Tel. 6-2211
 Passenger Terminal, Newark Airport. Tel. Market 3-2970
NEWARK, N. J. Pass. Term., Municipal Airport. Tel. New Haven 4-1500
NEW HAVEN, CONN. Reservations, 45 Vanderbilt Ave. Tel. Vanderbilt 3-2580
 Passenger Terminal, Newark Airport. Tel. Market 3-2970
NEW YORK, N. Y. Free Trans-Bay Telephone Service. Tel. Enterprise 10718
 Ticket Office, 1105 Russ Bldg., San Francisco
OAKLAND, CALIF. Ticket Office, 204 N. Broadway. Tel. 3-4214
 Passenger Terminal, Oakland City Airport. Tel. 3-7308
OKLAHOMA CITY, OKLA. Reservations, Chateau Laurier. Tel. Queen 4328
 Passenger Terminal, Rockcliffe Airport. Tel. Rideau 784
OTTAWA, ONT. Ticket Office, Pere Marquette Hotel. Tel. 4-5070
 Passenger Terminal, Peoria Airport. Tel. 5322
PEORIA, ILLINOIS. Ticket Office, 1339 Walnut St. Pennypacker 5750
PHILADELPHIA, PA. Central Airport (Camden, N. J.) Tel. Camden 5690
PHOENIX, ARIZ. Ticket Office, 19 E. Jefferson St. Tel. 4-3506
 Passenger Terminal, Sky Harbor Airport. Tel. 3-7476
PITTSBURGH, PA. Municipal Airport. Tel. Homestead 3113
 Penn.-Central Airlines, William Penn Hotel, Tel. Grant 6100
PROVIDENCE, R. I. Ticket Office, Turks Head Bldg., 76 Westminster Street
 Dexter 3460
 Reservations, R. I. State Airport. Williams 2600
ROANOKE, VA. Terminal Office, Municipal Airport. Tel. 2-7021
ROCHESTER, N. Y. Ticket Office, 4 Stone St. Tel. Stone 2408
 Passenger Terminal, Rochester Airport. Tel. Genesee 4006
ROME, N. Y. Passenger Terminal, Utica Airport. Tel. 6319
ST. LOUIS, MO. Reservations, Lambert Field. Tel. Winfield 1811
 Ticket Office, 403 North 12th Blvd. Tel. Garfield 5300
ST. PAUL, MINN. Ticket Office, 115 E. Fourth Street. Tel. Garfield 4881
SAN DIEGO, CALIF. J. K. Polk Gen'l Agency, 232 Broadway, Tel. Franklin 3252
SAN FRANCISCO, CALIF. Ticket Office, 1105 Russ Bldg. Garfield 8336
SCHENECTADY, N. Y. Passenger Terminal, Albany Airport—Scheneectady 2-2728
SCRANTON, PA. Pass. Term., Scranton Airport. Tel. Clark's Sum mit 333
SOUTH BEND, IND. Passenger Terminal, Bendix Airport. Tel. 3-1101
SPRINGFIELD, ILL. Pass. Term. Springfield Airp't, Main 864, Night, Capitol 1518
SYRACUSE, N. Y. Ticket Office, 225 S. State St. Tel. 6-1629
 Passenger Terminal, Syracuse Airport. Tel. 6-2131
TUCSON, ARIZ. Passenger Terminal, Tucson Airport. Tel. 2868
 Ticket Office, Santa Rita Hotel. Tel. 911
TULSA, OKLA. Ticket Office, Hotel Tulsa Lobby. Tel. 2-5209
 Passenger Terminal, Municipal Airport. Tel. 6-4958
UTICA, N. Y. Passenger Terminal, Utica Airport. Tel. 6319
WASHINGTON, D. C. Reservations, Washington Airport. Tel. NATIONAL 0442
 Ticket Office, 813 15th Street, N. W. Tel. NATIONAL 4108
YOUNGSTOWN, OHIO. L. B. Burger Travel Service, 39 N. Phelps Ave. Tel. 7-5141
 Postal Telegraph and Western Union Offices — Reservations may be made by telephone; uniformed messenger will deliver ticket order and collect air fare without extra charge within city limits.

—ALSO—
 American Express; "Ask Mr. Foster Travel Service"; Thos. Cook & Son; Raymond-Whitcomb; other Travel Bureaus and the Transportation Desk of Leading Hotels.

TRANSPORTATION TO AND FROM AIRPORTS

If Ground Transportation is desired passengers must inform Ticket Agent at time reservation is made

City	Airport	Miles	Minutes	Fare	
Nashville	Hermitage Hotel	Sky Harbor	26 SE	50	\$1.00
Newark	Newark	2 S	20	(d) .50	
New Haven	Municipal	3 1/2 SE	15	(d) 1.00	
New York (a)	Newark	14 SW	60	1.00	
Okla. City (a)	Municipal	9 SW	40	.75	
Ottawa	Rockcliffe	20		.75	
Peoria	Municipal	6 SW	25	.50	
Philadelphia	Camden	4 1/2 SE	30	.75	
Phoenix	Sky Harbor	3 1/2 E	15	.50	
Providence, (i)	R. I. State	6 1/2 S	25	.50	
Roanoke	Municipal	5 NW	20	.50	
Rochester	Municipal	4 1/2 SW	25	.60	
St. Louis	Lambert	15 1/2 NW	50	1.00	
Scranton	Curtiss	3 SE	25	.75	
South Bend	Municipal	12 W	35	1.00	
Springfield, Ill.	Bendix	3 1/2 NW	15	.40	
Syracuse	Municipal	5 SW	25	.50	
Tucson	Municipal	8 NW	30	.75	
Tulsa	Municipal	6 SE	15	(c) 1.00	
Utica	Municipal	6 NE	30	.50	
Washington	Municipal	7 NW	25	1.00	
Washington	Washington	3 S	20	.50	

a—45 Vanderbilt Avenue and New Yorker Hotel. c—\$1.00 for one or two; 50c for each additional passenger. d—Approximate fare—pay meter rate. f—\$0.50 for one; two or more \$0.25 each. g—Biltmore, Ambassador and Roosevelt Hotels. h—Mount Royal or Windsor Hotels. i—Ticket Office, Turks Head Building or Providence-Biltmore Hotel.

COAST-TO-COAST, "AMERICAN" OFFERS YOU THE
 FINEST AIRWAY

The Favorable **ALL YEAR** Southern Route
PLUS

Of all the ways devised for airlines to speed business and pleasure travelers across the continent, no other route has so many advantages as American Airlines' Southern skyway.

Particularly noted for its more favorable weather ALL-YEAR, it traverses the sunniest part of the United States. The year's average temperature for the route is 61.1 degrees . . . summer average, 78 degrees. Flagships, aloft, are air-cooled by nature—on the ground they are air-conditioned at airports.

Still another virtue of the all-year Southern route is its lower-level . . . an average of only 1,021 ft. covered by planes which cruise with comfort at 12,000 ft. . . and even as high as 21,000 ft.

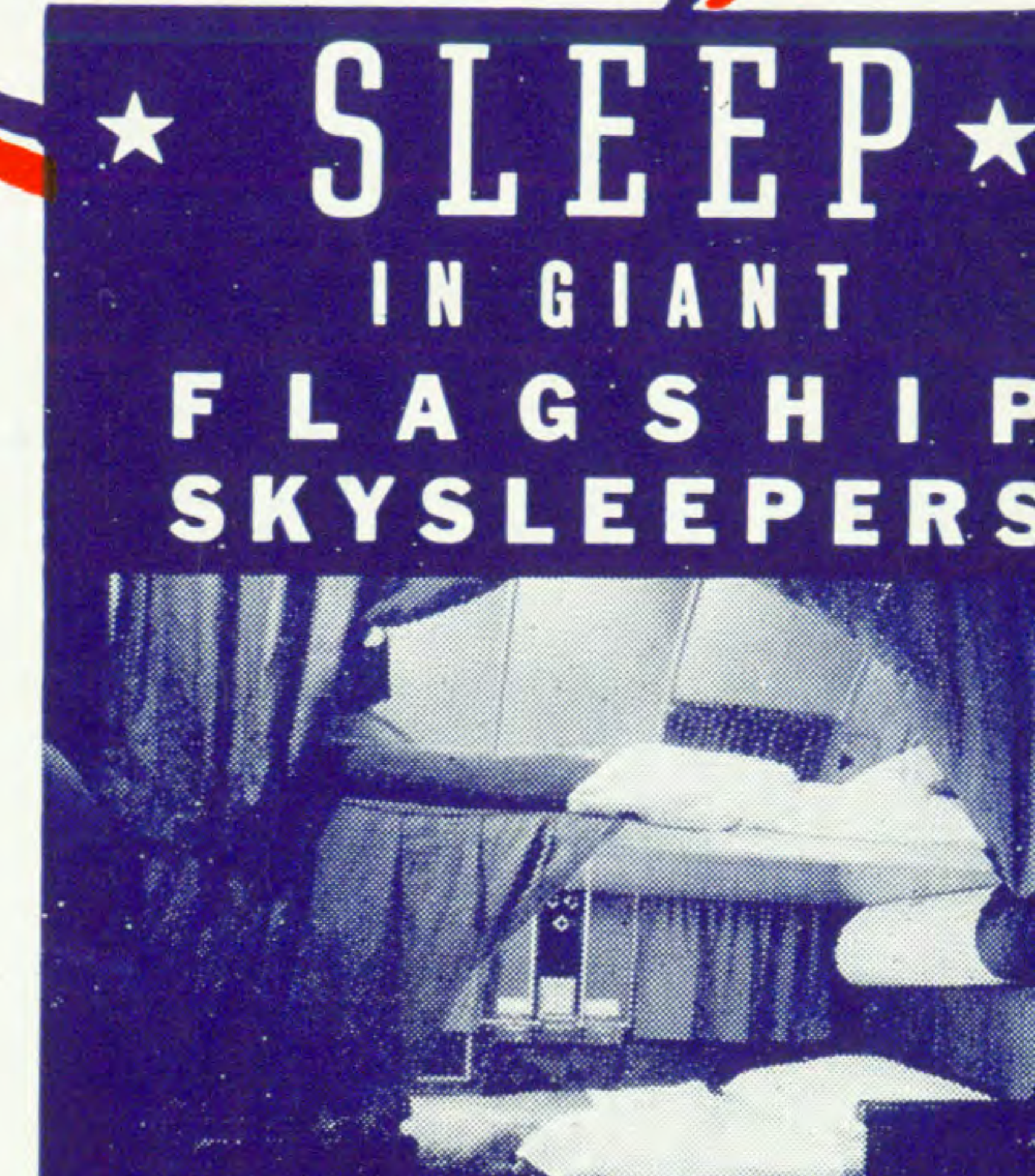
Scenic features on and near American Airlines' route are unsurpassed: Carlsbad Caverns, Palm Springs, Wonderland of Rocks, Apache Trail, The Capitol, Mississippi River, the Grand Colorado, Indian reservations in the Southwest, many national parks.

American Airlines speeds passengers overnight between New York and California along this beautiful route while they sleep in real beds. Only American can do this, because it operates new giant Flagship Skysleepers, the Nation's only Sleeper Planes.

American's Skysleepers provide the finest service for discriminating air travelers. We

call it "First-Class" because, for the first time in the air, it provides all of the luxuries which can be claimed by ground transportation. Amazing speed and time-saving with no sacrifice of personal comfort.

Be sure to investigate these remarkable flights. And remember to specify "American" for greatest travel enjoyment.



BERTHS LARGE AS TWIN BEDS!



DELICIOUS WARM MEALS AT NO CHARGE

Below: SUNRISE AT PHOENIX AIRPORT

SEE SCHEDULES PAGES 5 AND 6

The **AMERICAN MERCURY**
 3 STOPS ONLY!



The **SOUTHERNER**
 4 STOPS ONLY!

PHOTO: GRATTAN CONDON