



AMERICAN AIRLINES

INC.



AUG. 1, 1937

AMERICAN AIRLINES, INC.

C. R. SMITH
President

Summer Schedules



SYSTEM TIME TABLE EFFECTIVE AUG. 1, 1937



MADE IN U. S. A.

CALVERT-HATCH CO.

Mr. W. A. Burden,
Scudder Stevens & Clark,
1 Wall St.,
New York City.

Sec. 562, P. L. & R.

AMERICAN AIRLINES INC.



AUG. 1, 1937

NOW! GIANT DOUGLAS FLAGSHIPS



Between CHICAGO and TEXAS

The largest, finest planes now increase further the pleasure-advantages of air travel on American Airlines' Chicago-Texas Skyway.

Giant, 21 passenger Flagship Club Planes give travelers new lounge-chair luxury. A spacious super-quiet cabin in which to read or nap—smoke or chat away the brief, pleasant hours. The Stewardess serves delicious complimentary meals. And the cool comfort of the journey is completed by air-conditioning at terminals and air-cooling by Nature all-the-way. SEE TABLE 3, PAGE 6.

CHICAGO • ST. LOUIS • TULSA • OKLA. CITY • DALLAS • FT. WORTH

The LONE STAR ★ The LONGHORN

VACATIONERS!
Vacation travelers also use the comfort and time-saving advantages of American Airlines to go farther and see more in less time.

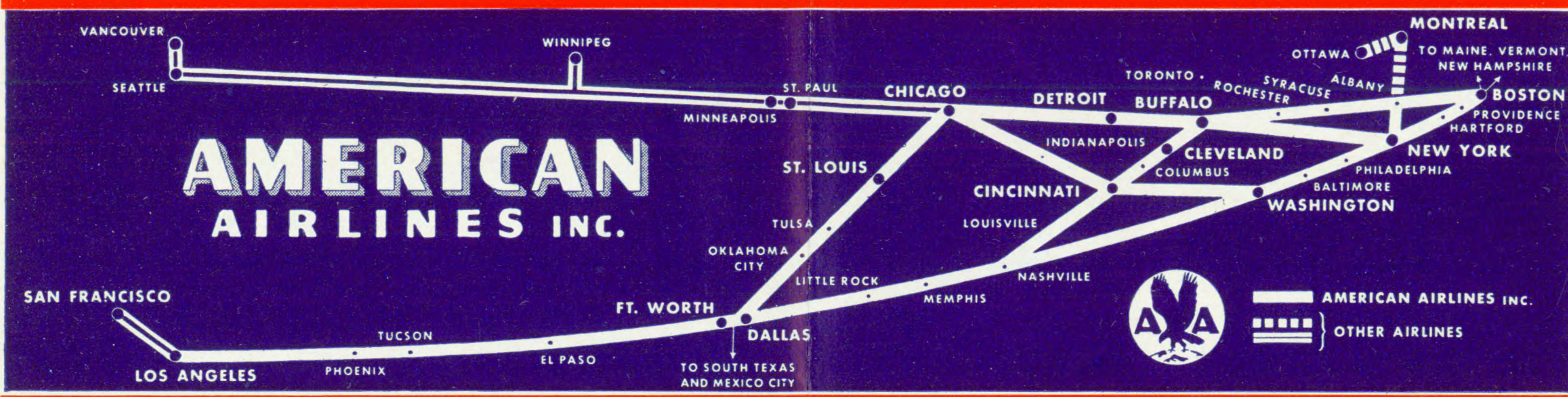


FAST, FREQUENT SERVICE BETWEEN NEW YORK AND CHICAGO

- ★ Non-Stop, twice daily: The EAGLE at 12:00 noon. The ARROW at 5:00 pm, Standard Time, from both cities.
- ★ Through Detroit and Buffalo: 6 daily flights eastbound, 6 westbound—several enabling you to see NIAGARA FALLS from the air . . . a grand spectacle!
- ★ All flights in new giant Flagship Club Planes—the largest, quietest, finest, longest-range transports. SEE TABLE B, PAGE 5.

Copyright 1937
American Airlines, Inc.

GENERAL INFORMATION



ANIMALS—Pets will be accepted as excess baggage under certain conditions. Consult AMA agent.

BAGGAGE—Thirty-five (35) pounds of baggage will be carried free on any ticket. Excess baggage carried upon special arrangements and shall be at the rate per pound of one-half of one per cent of the published air passenger fare, with a minimum charge of twenty-five cents, and the liability of the Carrier for loss of or damage to baggage and/or personal property is limited to the amount of One Hundred Dollars (\$100.00) unless a higher valuation be declared and an additional charge paid therefor. Excess valuation limited to \$1000.00 on each full fare ticket.

From 35 to 55 pounds of baggage will be carried free on tickets of passengers destined to Mexico, Central and South America using Pan American Airways. Inquire of ticket agent for full details.

On tickets of transoceanic passengers 50 pounds of baggage will be carried free, or 35 pounds will be carried by plane and 100 additional pounds transported by rail express.

CHILDREN—Children under two years of age, when held in arms of parents or guardian, carried free. Children over two years of age will be charged full fare.

FOUNTAIN PENS—Due to changes in atmospheric pressure when higher altitudes are reached many fountain pens have a tendency to leak when the plane climbs above 8,000 feet. Usually all that is necessary is to screw the cap on tightly. However, some of the older model pens leak so badly that it is best to wrap them to avoid damage to clothes or contents of hand bags.

GENERAL—The use of alcoholic beverages is not permitted on planes of American Airlines.

INSURANCE—Trip insurance is available at most airports.

PASSAGE, CANCELLATION BY COMPANY—The Company reserves the right to cancel bookings before passage or en route. Pilot may remove passengers from plane at any point on the route for safety or other cause. In all events the passenger's sole recourse shall be recovery of that portion of the fare equal to the distance untraveled.

PASSAGE, CANCELLATION BY PASSENGER—The purchaser may receive a refund for passage if canceled two hours prior to flight.

REFUNDS—Requests for refunds on tickets should be addressed to the Auditor of Ticket Accounts, American Airlines, Inc., 4848 West Sixty-Third St., Chicago, Ill.

RESERVATIONS—All space is reserved, though no definite seat assignments are made. Reservations will not be made except upon payment of fare. The sale of any seat is necessarily subject to company regulations for the control of space which in certain instances restrict the release of portions of through seats.

ROUND TRIP FARES—10% reduction on all round-trip tickets if purchased before start of original trip. Return trip must be started within sixty days.

STOP-OVER—Ten (10) day stop-over will be allowed at any regular stop, provided reservation is made accordingly.

TIME-TABLES—These time-tables show the times at which planes may be expected to depart from and arrive at the several stations shown, and to connect with trains or other planes, but their departure, arrival, or connection at the time stated is not guaranteed. American Airlines reserves the right to vary from the time shown in this folder without notice to the public.

WORLD-WIDE AIR SERVICE

EUROPE—American Airlines, Inc., provides fast service to New York and all principal European steamship ports. Abroad, Imperial Airways, Air France, K. L. M., Swiss Air, Sabena, Deutsche Lufthansa and connecting lines afford air services to all Europe.

AFRICA—From all principal European cities, airlines connect with Imperial Airways, Air France and associated lines for Egypt, the Sudan, East Africa and the Transvaal.

THE ORIENT—Imperial Airways to India, Burma, Siam, Malay Peninsula, China, Dutch East Indies and Australia. Air France to Syria, Iraq, Persia, India, Burma, Siam and Indo-China. K. L. M. and K. N. I. L. M. (Royal Dutch Air Lines) to Egypt, Arabia, India, Burma, Siam, Straits Settlements and the Dutch East Indies.

BERMUDA—Now only a few hours from any city in the United States via American Airlines, Inc. to New York, connecting with Pan American Airways and Imperial Airways joint service.

MEXICO—CENTRAL AND SOUTH AMERICA—American Airlines to Dallas or Ft. Worth, and via connecting air line to Brownsville, Texas, thence south via Pan American Airways.

TRANS-PACIFIC—Honolulu, Wake Island, Midway, Guam, Manila, Hongkong.

VACATION AIR TOURS—Every summer American Airlines renders another very important service to vacation travelers. Vacation round-trip air tours which help you to see much more and go much farther in less time . . . bring distant national parks, playgrounds, resorts, scenic spots, vacation cities, within a few hours of your home. Make this summer's vacation one that will live long in your memory! Your travel agent or your American Airlines' representative will gladly furnish details.

MERCURY SKYSLEEPER

THE CLEAN, COMFORTABLE,

Cool WAY TO TRAVEL BETWEEN NEW YORK AND CALIFORNIA



American's giant Flagship Skysleepers are AIR-CONDITIONED at airports—and continuously air-cooled by nature—all-the-way.

MERCURY SKYSLEEPER

SOUTHERNER SKYSLEEPER

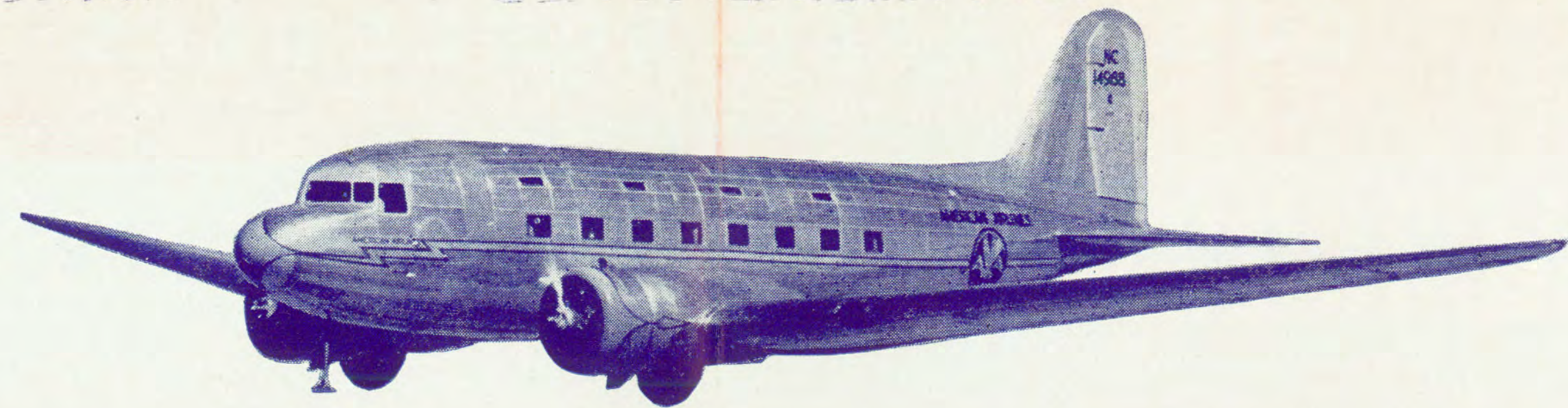
● A midsummer trip between New York and California is just a cool, clean, overnight journey on "American's" MERCURY Skysleeper! A brief, easy ride in a giant Flagship, air-conditioned at airports and fresh-air-conditioned by nature all the way.

A late afternoon departure—a deep, cool sleep—a morning arrival. And how *fresh* you feel when you get there! How *clean* and *fit!*

The MERCURY is *not* a miracle. "American's" famous Skysleeper service has won favor with discriminating travelers because it is designed from *experience* to be the *finest* in transcontinental travel. A *complete* sleeper plane service, developed exclusively by American Airlines for more than three years. The MERCURY travels the lower-ground-level way—"American's" favorable all-year Southern route.

Here's what you enjoy en route: A delicious, full course complimentary dinner. Served by the courteous Stewardess on a real table with china, silver and linen. A cool evening, relaxed in a deep lounge chair—smoking, reading, chatting, playing bridge. A broad aisle and spacious quiet cabin. A *big* fresh-air-swept berth. Curtained privacy. A night of sleep as long as you wish. Only 2 stops after you retire. In the morning, dress and wash-up at leisure in the big Dressing and Lavatory rooms. Separate rooms for men and women—4, in all. Then . . . a delicious hot breakfast before arriving! *This* is the clean, comfortable, COOL way to travel between New York and California!

See Table A, page 5, and Table 1, page 6.



MOST COMPLETE SERVICE: CHICAGO—WASHINGTON

Two facts about American Airlines' service always impress air travelers between Chicago and Washington, D.C.: it is the *only direct through service*—and there is *no change of planes*.

Now American offers a *most complete service* with morning and evening flights, both ways, in new giant 21-passenger FLAGSHIP Club Planes, and a third flight, each way in big Douglas Airliners. All three flights,

eastbound, serve *Cincinnati*—two, westbound. Two flights serve *Indianapolis*, both ways.

Enjoy club lounge-chair luxury, while you avoid hours of unnecessary travel. Delicious complimentary meals served by a courteous Stewardess. You travel in perfect comfort because "American" giant Flagships and Douglas Airliners are air cooled by Nature all the way. SEE TABLE 5, PAGE 7.

DOUGLAS AIRLINERS NOW SERVE HARTFORD, PROVIDENCE

August 1st brings still finer air service to Providence, R. I., and Hartford, Conn. Now big, 14-passenger Douglas Airliners join these two cities and New York and Boston with 3 fast flights a day, and provide excellent air service to 250 major cities.

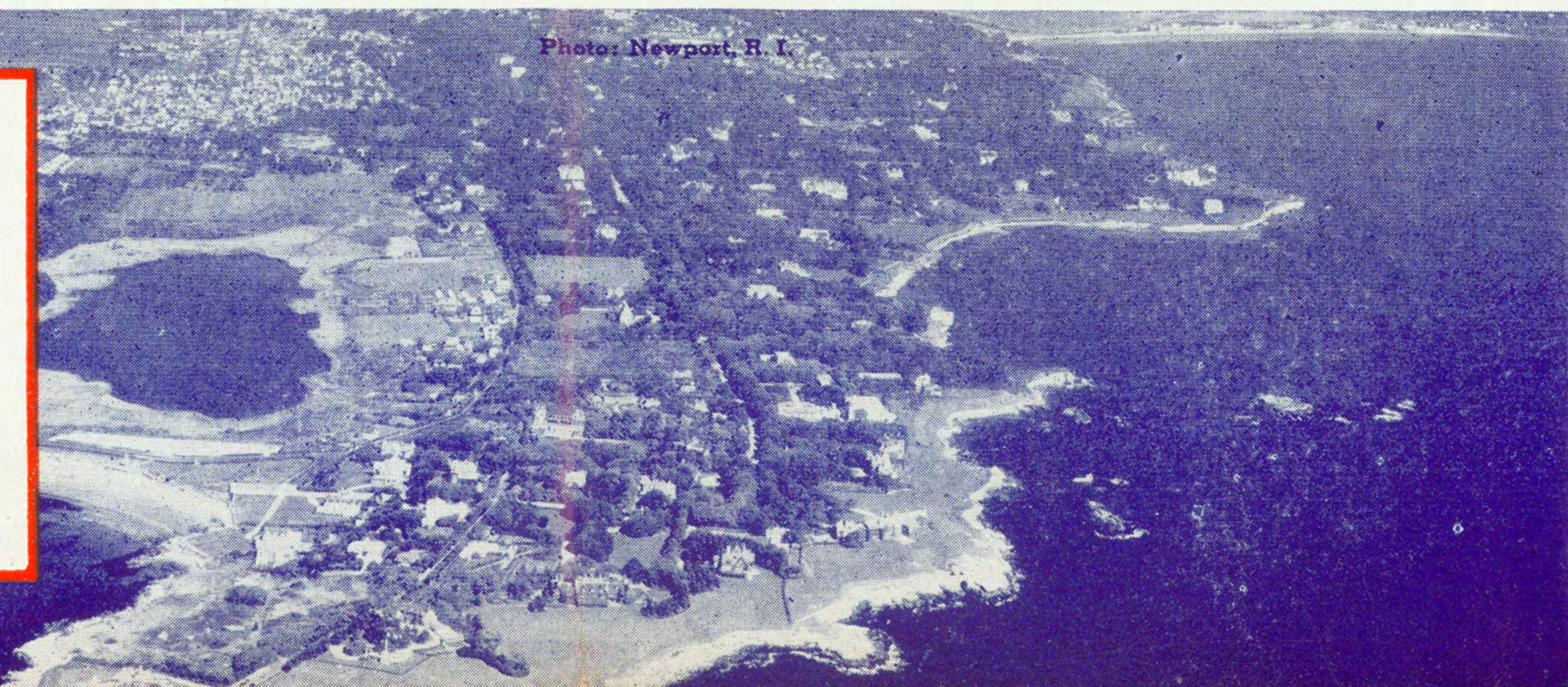
Air travelers from either city can do busi-

ness in New York or Boston—and be home the same afternoon—or evening . . . or go to Chicago in just 5¾ hours from Hartford, 6½ hours from Providence . . . or go to California *overnight* in a giant Flagship Skysleeper! For details of these new, fast services SEE TABLE 7, PAGE 8.

Photo: Newport, R. I.

MOTHERS with CHILDREN

find air travel a blessing! A short journey. No upset schedules and nights-on-the-road for baby. And an experienced Stewardess to help.



CONDENSED SCHEDULES

SEE FOLLOWING PAGES FOR COMPLETE SERVICE

ALL TIMES STANDARD—ADD ONE HOUR FOR DAYLIGHT SAVING TIME
(See Page 11)

NEW YORK—LOS ANGELES SKYSLEEPER SERVICE

WESTBOUND Read Down

SOUTHERN TRANSCONTINENTAL

EASTBOUND Read Up

No. 1 Daily	The Southerner Daily	American Mercury Daily	No. 11 Daily	TABLE A Also see Table 1	No. 2 Daily	American Mercury Daily	The Southerner Daily
	6.20pm	3.20pm	10.20am	Lv Boston (ET) Ar	10.03am	2.19pm	9.33pm
	8.30pm	5.10pm	12.20pm	Lv NEW YORK (Newark) " Ar	7.00am	11.20am	6.52pm
	10.02pm	—	2.20pm	Lv WASHINGTON " Ar	5.00am	—	5.20pm
	—	9.15pm	5.12pm	Lv NASHVILLE (CT) Ar	12.30am	5.38am	12.50pm
4.00pm	2.08am	—	6.41pm	Lv MEMPHIS " Ar	11.05pm	—	11.18am
—	—	—	e9.49pm	Lv DALLAS " Lv	8.05pm	—	—
4.30pm	5.15am	1.30am	—	Lv DALLAS-FT. WORTH " Lv	—	2.00am	8.35am
6.45pm	7.28am	—	e10.17pm	Lv FT. WORTH " Lv	7.37pm	—	—
9.05pm	—	—	—	Ar EL PASO (MT) Lv	2.30pm	—	4.14am
10.00pm	10.05am	5.33am	—	Ar TUCSON " Lv	12.15pm	8.15pm	—
11.35pm	11.31am	7.30am	—	Ar PHOENIX " Lv	11.20am	—	1.48am
	—	—	—	Ar LOS ANGELES (Glendale) (PT) Lv	8.00am	4.30pm	10.30pm
2.42am	2.30pm	10.00am	—	Ar San Francisco (UAL) " Lv	2.55am	2.00pm	6.30pm
	1.40pm	10.00am	—	Ar San Diego (UAL-WAE) " Lv		3.00pm	6.00pm
Day Douglas	Flagship Skysleeper	Flagship Skysleeper	Day Douglas	Equipment	Day Douglas	Flagship Skysleeper	Flagship Skysleeper

NEW YORK—CHICAGO

TABLE B		WESTBOUND—Read Down		No. 19	The Niagara No. 9★	American Eagle No. 21	No. 15★	Pacific Northwester No. 3★	American Arrow No. 17	No. 1★	No. 5	The Night Owl No. 7
Mls.	★ Via Niagara Falls and Gorge.	Ex. Sun. & Hol.	Daily	Daily	Daily	Daily	Daily	Daily	Daily	Ex. Sat. & Bef. Hol.	Ex. Sat. & Bef. Hol.	Daily
0	NEW YORK (Newark) (E.T.)	Lv	8.00 am	12.00 N	12.10 pm	3.00 pm	5.00 pm	6.00 pm	8.10 pm	1.00 am		
282	BUFFALO	Ar	9.55 am		2.05 pm	4.55 pm	7.55 pm	8.10 pm	10.05 pm	2.55 am		
	BUFFALO	Lv	10.05 am	NON-STOP	2.15 pm	5.05 pm	8.05 pm	10.15 pm	3.05 am			
504	DETROIT	Ar	11.40 am	NON-STOP	3.50 pm	6.40 pm	9.40 pm	11.50 pm	4.40 am			
	DETROIT	Lv	7.15 am		4.00 pm	6.50 pm	9.50 pm	12.00 pm	4.50 am			
751	CHICAGO (C.T.)	Ar	8.28 am	3.45 pm	4.40 pm	7.30 pm	10.30 pm	12.40 am	5.30 am			

EASTBOUND—Read Down		No. 20	The Niagara No. 10★	The Manhattan No. 12★	American Eagle No. 22	No. 2★	New Yorker No. 4	American Arrow No. 16	No. 14	International No. 6	The Night Owl No. 8
Mls.	Flight 20 Douglas DC-2, all others Flagship Club Planes. Stewardesses aboard all flights.	Daily	Daily	Daily	Daily	Daily	Daily	Daily	Ex. Sat. & Bef. Hol.	Ex. Sat. & Bef. Hol.	Daily
0	CHICAGO (C.T.)	Lv	7.00 am	11.00 am	12.00 N	1.30 pm	4.30 pm	5.00 pm	5.30 pm	7.00 pm	12.30 am
247	DETROIT (E.T.)	Ar	9.25 am	1.25 pm		3.55 pm	6.55 pm	8.21 pm	9.25 pm	2.55 am	
	DETROIT	Lv	9.35 am	1.35 pm	NON-STOP	4.05 pm	7.05 pm		9.35 pm	3.05 am	
469	BUFFALO	Ar	10.52 am	2.52 pm	NON-STOP	5.22 pm	8.20 pm		10.50 pm	4.20 am	
	BUFFALO	Lv	7.00 am	11.02 am		5.32 pm	8.30 pm		11.00 pm	4.30 am	
751	NEW YORK (Newark)	Ar	9.39 am	12.40 pm	4.40 pm	4.55 pm	7.10 pm	10.08 pm	9.55 pm	12.38 am	6.08 am

SPEED LETTERS
AIR MAIL



SPEED PARCELS
AIR EXPRESS

★ OFFICES AND GROUND SERVICE ★

EXAMPLES OF PASSENGER FARES

GENERAL SALES OFFICE: — 20 N. Wacker Drive, Chicago

CABLE ADDRESS: AMAIR

CHARLES A. RHEINSTROM, Vice President-Sales
J. HERMAN THEILIG, Manager-Agency and Foreign Department
E. G. BERN, Director of Publicity

R. S. MAUGHAM, Manager-Air Mail and Express
M. D. MILLER, Manager-National Accounts

INFORMATION—RESERVATIONS—TICKETS

ABILENE, TEXAS. Reservations, Municipal Airport. Tel. 7021
Ticket Office, Hilton Hotel Lobby. Tel. 3261

AKRON, OHIO. Reservations, Municipal Airport. Tel. Jefferson 5151

ALBANY, N. Y. Reservations, Albany Airport. Tel. 2-4466
Ticket Office, 83 State Street. Tel. 5-2141

ANN ARBOR, MICH. F. S. Randall, Gen'l Agent, 12 Nickels Arcade. Tel. 6040

BALTIMORE, MD. Reservations, Logan Field. Tel. Riverside 0640
Ticket Office, 213 N. Charles St. Tel. Plaza 1180

BATTLE CREEK, MICH. Ticket Office, Battle Creek Sanitarium. Tel. 7121
Passenger Terminal, Kellogg Airport. Tel. 2-3914

BIG SPRING, TEXAS. Passenger Terminal, American Airlines Field. Tel. 1160

BOSTON, MASS. Reservations, Boston Airport. Tel. East Boston 2040
Ticket Office, 140 Federal St. Tel. Liberty 6233

BRISTOL, VA. Passenger Terminal Bristol Airport. Tel. Bristol 1776

BUFFALO, N. Y. Reservations, Buffalo Airport. Tel. Fillmore 4044
Traffic Office, Statler Hotel. Tel. Washington 3861

CAMDEN, N. J. Reservations, Central Airport. Tel. 5690

CHARLESTON, W. VA. Passenger Terminal, Wertz Field. Tel. South 4523

CHICAGO, ILL. Reservations, Municipal Airport. Tel. Hemlock 5000
Ticket Office, 312 S. Michigan Ave. Tel. Harrison 2627
Ticket Office, Palmer House Arcade, Shop "B", Rand. 2880

CINCINNATI, OHIO. Reservations, Lunken Airport. Tel. East 4700
Ticket Office, 419 Walnut St. Tel. Parkway 2171

CLEVELAND, OHIO. Reservations, Cleveland Airport. Tel. Clearwater 3300
Ticket Office, 839 Union Trust Bldg. Tel. Cherry 3900

COLUMBUS, OHIO. Ticket Office, 20 E. Broad Street. Tel. Main 3303
Pass. Terminal, Port Columbus Airport—Evergreen 4618
Pass. Term. (Elmira) Amer. Airlines Field, Tel. Elmira 4568

CORNING, N. Y. Ticket Office, 1404 Commerce St. Tel. 2-8747

DALLAS, TEXAS. Passenger Terminal, Love Field. Tel. 5-3181

DETROIT, MICH. Reservations, City Airport. Tel. Pingree 7000
Ticket Office, 1251 Washington Blvd. Tel. Cadillac 5221

DOUGLAS, ARIZ. Passenger Terminal, International Airport. Tel. 160

EAST ST. LOUIS, ILL. Passenger Terminal, Curtiss Airport. Tel. Bridge 8700

ELMIRA, N. Y. Pass. Terminal, American Airlines Field. Tel. 4568

EL PASO, TEXAS. Reservations, American Airlines Field. Tel. Main 221

FT. WORTH, TEXAS. Reservations, Meacham Field. Tel. 6-1183
Ticket Office, Texas Hotel. Tel. 2-7218
Passenger Terminal, Rentschler Field. Tel. 8-4133

HARTFORD, CONN. Ticket Office, 6735 Hollywood Blvd., Tel. HOLLYWOOD 3914

HONOLULU, HAWAII. Inter-Island Steam Navigation Co. Ltd.,
Fort and Merchant Street, Tel. 4941

HOUSTON, TEXAS. Ticket Office, Texas State Hotel Lobby. Tel. Capitol 5259

INDIANAPOLIS, IND. Passenger Terminal, Municipal Airport. Tel. Belmont 4979
Traffic Office, 609 Merchants Bank Bldg., Tel. Lincoln 1190

JACKSON, MICH. Passenger Terminal, Reynolds Airport. Tel. 5275

KALAMAZOO, MICH. Passenger Terminal, Municipal Airport. Tel. 7342

KNOXVILLE, TENN. Terminal Office, Island Airport. Tel. 2-2218

LITTLE ROCK, ARK. Reservations, Municipal Airport. Tel. 6822

LOS ANGELES, CALIF. Ticket Office, 512 West 6th Street. Tel. MICHigan 8822
Hollywood Tick. Off. 6735 Hollywood Blvd. HOLLYWOOD 3914
Passenger Terminal, Grand Central Air Terminal,
Glendale, Calif. Tel. Omaha 3-4081

LOUISVILLE, KY. Ticket Office, Kentucky Hotel. Tel. Wabash 2813
Reservations, Bowman Field. Tel. Highland 4600

LYNCHBURG, VA. Passenger Terminal, Preston Glenn Airport. Tel. 546

MEMPHIS, TENN. Reservations, Municipal Airport. Tel. 3-2340
Ticket Office, Hotel Peabody. Tel. 8-3245

MEXICO CITY, MEX. Wells Fargo & Co., Av. Madero No. 14
Tel. Eric 2-93-90 or Mex L31-00

MILWAUKEE, WIS. Ticket Office, 203 East Wisconsin. Tel. Daly 6668

MINNEAPOLIS, MINN. Ticket Office, 711 Marquette Ave. Tel. Atlantic 8822

MONTREAL, QUE., CAN. Reservations, Hotel Mount Royal. Tel. Plateau 2501
Passenger Terminal, St. Hubert Airport, Tel. Longueuil 525

NASHVILLE, TENN. Ticket Office, Hermitage Hotel. Tel. 5-6411
Reservations, Municipal Airport. Tel. 6-2211

NEWARK, N. J. Passenger Terminal, Newark Airport. Tel. Market 3-2970

NEW YORK, N. Y. Reservations, 24 hour service. VANDERBILT 3-2580
District Sales Office, 45 Vanderbilt Ave. VANDERBILT 3-2641
Ticket Offices:
45 Vanderbilt Ave. VANDERBILT 3-2580
Hotel New Yorker Lobby. VANDERBILT 3-2580
Rockefeller Center, 18 W. 49th St. VANDERBILT 3-2580
Passenger Terminal, Newark Airport. Tel. Market 3-2970
Passenger Terminal, Floyd Bennett Field
Tel. Esplanade 7-1488

OAKLAND, CALIF. Free Trans-Bay Telephone Service. Tel. Enterprise 10718
Ticket Office, 1105 Russ Bldg., San Francisco

OKLAHOMA CITY, OKLA. Ticket Office, 204 N. Broadway. Tel. 3-4214

OTTAWA, ONT. Passenger Terminal, Oklahoma City Airport. Tel. 3-7308
Reservations, Chateau Laurier. Tel. Queen 4328
Passenger Terminal, Rockcliffe Airport. Tel. Rideau 1784

PEORIA, ILLINOIS. Ticket Office, Pere Marquette Hotel. Tel. 4-5070

PHILADELPHIA, PA. Ticket Office, 1339 Walnut St. Pennypacker 5750
Central Airport (Camden, N. J.) Tel. Camden 5690

PHOENIX, ARIZ. Ticket Office, 19 E. Jefferson St. Tel. 4-3506
Passenger Terminal, Sky Harbor Airport. Tel. 4-3109

PITTSBURGH, PA. Municipal Airport. Tel. Homestead 3113
Air Travel Bureau, William Penn Hotel. Tel. Grant 6100
Ticket Office, Turks Head Bldg., 76 Westminster Street
Dexter 3460

PROVIDENCE, R. I. Reservations, R. I. State Airport. Williams 2600
Terminal Office, Municipal Airport. Tel. 2-7021
Ticket Office, 68 East Ave. Tel. Stone 2408

ROANOKE, VA. Passenger Terminal, Municipal Airport. Tel. Genesee 4006

ROCHESTER, N. Y. Passenger Terminal, Utica Airport. Tel. 6319
Reservations, Lambert Field. Tel. Winfield 1811
Ticket Office, 403 North 12th Blvd. Tel. Garfield 5303

ST. PAUL, MINN. Ticket Office No. 1, Hotel St. Paul Lobby. Garfield 4881

SAN DIEGO, CALIF. J. K. Polk Gen'l Agency, 232 Broadway, Tel. Franklin 1551

SAN FRANCISCO, CALIF. Ticket Office, 1105 Russ Bldg. Garfield 8336

SCHENECTADY, N. Y. Passenger Terminal, Albany Airport—Schenectady 2-2728

SOUTH BEND, IND. Passenger Terminal, Bendix Airport. Tel. 3-1101

SPRINGFIELD, ILL. Pass. Term. Springfield Airp't, Main 864, Night, Capitol 1518

SYRACUSE, N. Y. Ticket Office, 225 S. State St. Tel. 6-1629
Passenger Terminal, Syracuse Airport. Tel. 6-2131

TUCSON, ARIZ. Passenger Terminal, Tucson Airport. Tel. 2465
Ticket Office, Santa Rita Hotel. Tel. 911

TULSA, OKLA. Ticket Office, Hotel Tulsa Lobby. Tel. 2-5209
Passenger Terminal, Municipal Airport. Tel. 6-4958

UTICA, N. Y. Ticket Office, 508 Seneca St. Tel. Utica 4-6319

WASHINGTON, D. C. Reservations, Washington Airport. Tel. National 0442
Ticket Office, 813 15th Street, N. W. Tel. National 4108

WILKES-BARRE, PA. Passenger Terminal, Wilkes-Barre Wyoming Valley
Airport. Tel. Kingston 7-5440

YOUNGSTOWN, OHIO. L. B. Burger Travel Service, 39 N. Phelps Ave., Tel. 7-5141
Postal Telegraph and Western Union Offices—Reservations may be made by tele-
phone; uniformed messenger will deliver ticket order and collect air fare without extra
charge within city limits.

TRANSPORTATION TO AND FROM AIRPORTS

If Ground Transportation is desired passengers must inform Ticket Agent at time reservation is made

City	Airport	Miles	Minutes	Fare
Abilene	Municipal	3 1/2 E	15	\$0.50
Albany	Municipal	9 NW	30	1.00
Baltimore	Logan Field		40	.75
Big Spring	American	2 1/2 W	10	(f) .50
Boston	140 Federal St.	1 E	25	.50
Bristol	Municipal	4 E	20	.50
Buffalo	Municipal	7 E	40	.75
Chicago	Municipal	12 SW	50	.75
Cincinnati	Lunken	6 E	40	.50
Cleveland	Municipal	8 1/2 SW	40	.75
Columbus	Pt. Columbus	8 E	40	.75
Dallas	Love	6 N	30	.50
Detroit	City	6 NE	35	.75
Douglas	Internatl.	2 1/2 E	10	1.00
East St. Louis	Curtiss	1 S	15	.50
Elmira	American	7 NW	25	1.00
El Paso	American	7 N	30	.75
Chicago	Meacham	5 N	30	.60
Hartford	Rentschler	3 SE	25	(d) 1.00
Hollywood	Grand Central	7 NE	35	1.00
Indianapolis	Municipal	8 1/2 SW	35	.75
Knoxville	Municipal	13 SW	45	1.00
Little Rock	Municipal	1 1/2 SE	10	.50
Los Angeles, (g)	Grand Cent.	14 NW	60	.75
Louisville	Bowman	6 SE	30	.75
Lynchburg	Preston Glenn	8 S	20	1.00
Memphis	Municipal	9 SE	40	.75
Montreal, (h)	St. Hubert	12 1/2 E	50	1.00

City	Airport	Miles	Minutes	Fare
Nashville, Hermitage Hotel	Municipal	6 SE	20	\$0.75
Newark	Newark	2 S	20	(d) 1.00
New York (a)	Newark	14 SW	60	1.00
New York	Floyd Bennett	14 SE	60	1.00
Oklahoma City, 204 N. Bldg.	Municipal	9 SW	40	.75
Ottawa	Rockcliffe	4 1/2 SE	30	.75
Philadelphia	Camden	4 1/2 SE	30	.75
Phoenix	Sky Harbor	3 1/2 E	15	.50
Providence, (i)	R. I. State	6 1/2 S	25	.50
Roanoke	Municipal	5 NW	20	.50
Rochester	Municipal	4 1/2 SW	25	.60
St. Louis	Lambert	15 1/2 NW	50	1.00
Scranton	Curtiss	3 SE	25	.75
South Bend	Municipal	12 W	35	1.00
Springfield, Ill.	Bendix	3 1/2 NW	15	.40
Syracuse	Municipal	5 SW	25	.50
Syracuse	Municipal	8 NW	30	.75
Tucson	Municipal	6 SE	15	(c) 1.00
Tulsa	Municipal	6 NE	30	.50
Washington	Washington	3 S	20	.50
Wilkes-Barre	Wyoming Valley	5 NE	20	.75

a—45 Vanderbilt Avenue and New Yorker Hotel. c—\$1.00 for one or two; 50c for each additional passenger. d—Approximate fare-pay meter rate. f—\$0.50 for one; two or more \$0.25 each. g—Biltmore, Ambassador and Roosevelt Hotels. h—Mount Royal or Windsor Hotels. i—Ticket Office, Turks Head Building or Providence-Biltmore Hotel.

For fares not shown call any American Airlines office or your transportation agent

One-way fares in light-face. Round-trip fares in bold-face.	Albany, N. Y.	Boston, Mass.	Buffalo, N. Y.	Chicago, Ill.	Cincinnati, Ohio	Cleveland, Ohio	Detroit, Mich.	Ft. Worth, or Dallas, Texas	Indianapolis, Indiana	Little Rock, Ark.	Los Angeles, Calif.	Memphis, Tenn.	Montreal, P. Q.	Nashville, Tenn.	New York, N. Y.	Oklahoma City, Okla.	Phoenix, Ariz.	St. Louis, Mo.	San Francisco, Calif.	Tucson, Ariz.	Tulsa, Okla.	Washington, D. C.
Passenger Fares Shown are From Airport To Airport																						
Albany, N. Y.	OW RT	11.40 20.50	16.84 30.32	42.85 77.10	40.50 72.90	26.45 47.60	29.59 53.27	90.80 163.44		78.35 141.02	150.20 270.36	70.15 126.26	14.40 25.90	56.95 102.50	9.00 16.20	84.30 151.70	139.90 251.82	56.80 102.20	150.20 270.36	135.80 244.44	77.80 140.00	21.20 38.15
Boston, Mass.	OW RT	11.40 20.50	28.21 50.78	54.20 91.70	50.95 91.70	37.85 68.12	40.96 73.73	96.50 173.70	54.45 98.00	84.25 151.20	159.20 276.00	76.00 130.90	30.60 52.19	62.85 113.10	13.90 25.00	94.90 170.82	150.60 271.08	67.40 121.32	159.20 286.56	147.00 264.60	88.40 159.12	26.10 46.90
Buffalo, N. Y.	OW RT	16.84 30.32	28.21 50.78	26.00 46.80	24.80 44.64	10.75 19.35	12.75 22.95	77.95 140.31	28.29 50.92	62.04 111.68	131.00 235.80	54.43 97.96	28.99 52.19	41.26 74.27	21.95 39.51	67.45 121.41	124.15 223.46	39.95 71.91	131.00 235.80	120.70 217.26	60.95 109.71	28.50 51.30
Chicago, Ill.	OW RT	42.85 77.10	54.20 91.70	26.00 46.80	16.00 28.80		13.25 23.85	51.95 93.50	10.50 18.90	39.25 70.65	105.00 189.00	31.00 55.00	55.00 99.00	26.70 48.05	44.95 80.90	41.45 74.60	100.40 180.72	13.95 25.10	105.00 189.00	96.95 174.50	34.95 62.90	36.00 64.80
Cleveland, Ohio	OW RT	26.45 47.60	37.85 68.12	10.75 19.35	14.05 25.25			68.50 123.30	17.55 31.58	51.90 93.40	123.25 221.84	43.70 78.65	39.75 71.55	30.50 54.90	26.70 48.06	58.00 104.40	113.40 204.12	30.50 54.90	123.25 221.84	109.95 197.90	51.50 92.70	
Dallas, Texas, or Ft. Worth, Texas	OW RT	163.44 173.70	140.31 140.31	93.50 93.50	102.65 102.65	123.30 123.30	117.36 117.36	4.50 4.50	106.20 106.20	34.55 34.55	132.30 132.30	27.40 49.30	103.55 186.38	40.55 73.00	82.60 148.68	12.50 22.50	57.30 103.14	38.00 68.40	92.45 166.40	50.40 90.72	17.00 30.60	70.45 126.80
Detroit, Mich.	OW RT	29.59 53.27	40.96 73.73	12.75 23.85	13.25 23.85	18.60 33.48		65.20 117.36	23.75 42.74	49.29 88.73	118.25 212.84	44.23 79.60	41.74 75.14	33.90 61.02	34.60 62.28	54.70 98.46	113.65 204.56	27.20 48.96	118.25 212.84	110.20 198.36	48.20 86.76	
Los Angeles, Calif.	OW RT	150.20 163.44	159.20 173.70	131.00 140.31	105.00 102.65	114.90 123.30	118.25 212.84	73.50 132.30	109.40 196.92	92.70 166.86		98.10 176.58	160.00 288.00	109.30 196.74	149.95 269.90	83.05 149.48	23.15 41.65	96.45 173.60		30.05 54.05	89.55 161.18	139.75 251.54
Memphis, Tenn.	OW RT	70.15 126.26	76.00 136.80	54.43 97.96	31.00 55.80	29.60 53.25	43.70 78.65	27.40 49.30	31.00 55.80	8.25 14.85	98.10 176.58		85.50 153.90	13.20 23.75	62.10 111.75		82.70 148.86		117.05 210.68	75.80 136.44	49.90 89.80	
Montreal, P. Q.	OW RT	14.40 25.90	20.90 37.60	28.99 52.19	55.00 99.00	53.80 96.80	39.75 71.55	41.74 75.14	103.55 186.38	93.75 168.74	160.00 288.00	85.50 153.90		72.35 130.20	23.40 42.10	96.45 173.60	151.40 272.52	68.95 124.10	160.00 288.00	147.95 266.30	89.95 161.90	35.60 64.05
Nashville, Tenn.	OW RT	56.95 102.50	62.85 113.10	41.26 74.27	26.70 48.05	16.45 29.60	30.50 54.90	33.90 61.02	40.55 73.00	21.60 38.85	109.30 196.74	13.20 23.75	72.35 130.20		48.95 88.10		95.85 172.52		120.50 216.90	88.95 160.10	36.75 66.15	
New York, N. Y.	OW RT	9.00 16.20	13.90 25.00	21.95 39.51	44.95 80.90	37.05 68.06	26.70 48.06	34.60 62.28	82.60 148.68	40.55 72.98	70.35 126.60	62.10 111.75	23.40 42.10	48.95 88.10		81.00 145.80	139.90 251.82	53.50 96.30	149.95 269.90	133.10 239.58	74.50 134.10	12.20 21.90
St. Louis, Mo.	OW RT	56.80 102.20	67.40 121.32	39.95 71.91	13.95 25.10	29.95 53.90	30.50 54.90	27.20 48.96	38.00 68.40	24.45 44.00	96.45 173.60		68.95 124.10	53.50 96.30	27.50 49.50	93.45 168.20		105.00 189.00	88.40 159.12	21.00 37.80	43.70 78.66	
Washington, D. C.	OW RT	21.20 38.15	26.10 46.90	28.50 51.30	36.00 64.80	25.90 46.60		70.45 126.80	30.75 55.35	58.15 104.65	139.75 251.54	49.90 89.80	35.60 64.05	36.75 66.15	12.20 21.90	70.20 126.36	127.75 229.94	43.70 78.66	139.75 251.54	120.85 217.52	64.70 114.66	

SLEEPER CHARGES

Westbound	Eastbound
NEW YORK to:—	LOS ANGELES to:—
TUCSON..... \$7.00	NASHVILLE..... \$6.00
LOS ANGELES..... 8.00	NEW YORK..... 8.00
NASHVILLE to:—	TUCSON to:—
TUCSON..... 5.00	NASHVILLE..... 5.00
LOS ANGELES..... 6.00	NEW YORK..... 7.00
FT. WORTH-DALLAS to:—	FT. WORTH-DALLAS to:—
TUCSON..... 3.00	NEW YORK..... 4.00
LOS ANGELES..... 4.	