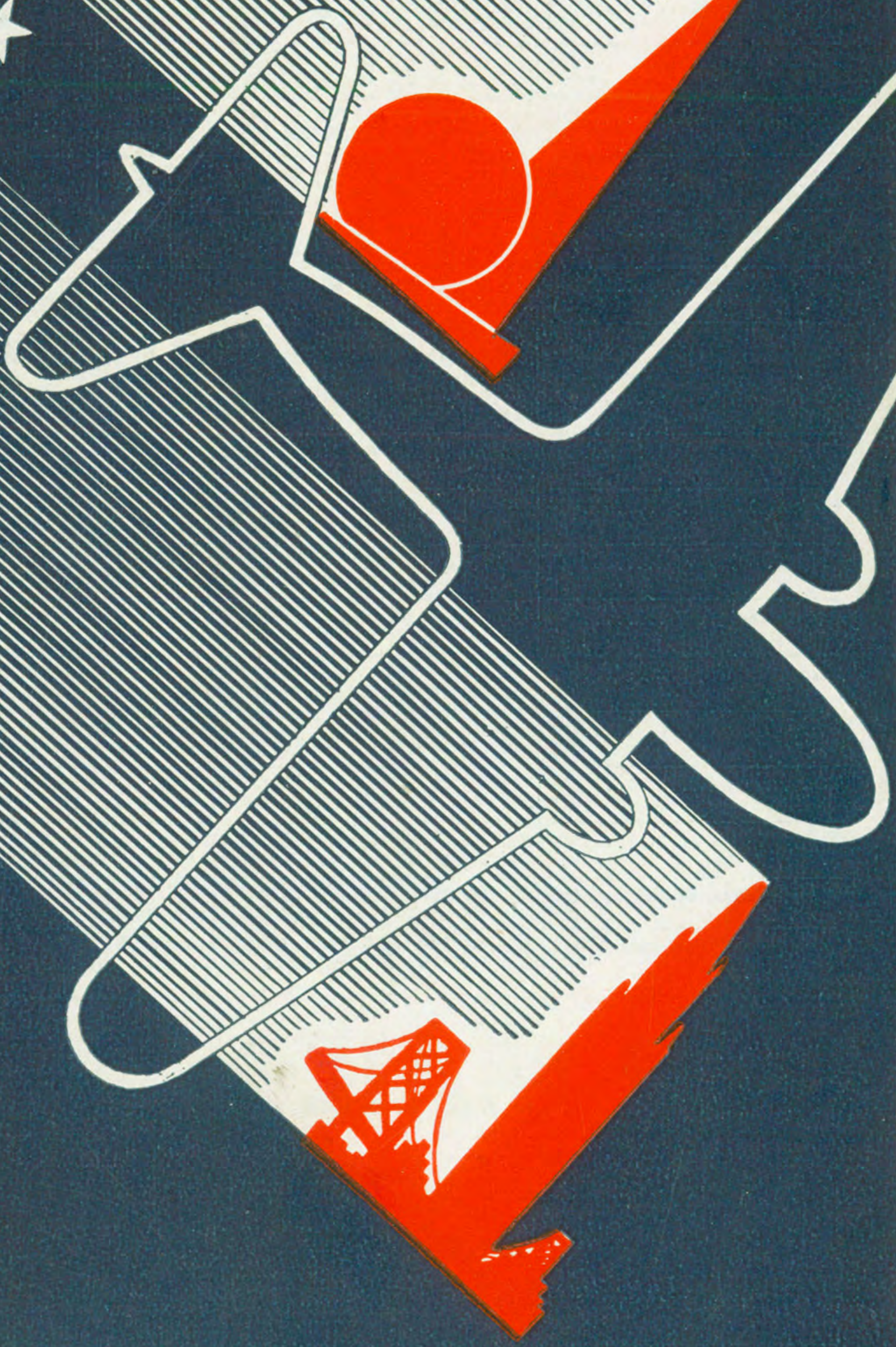


APRIL 1, 1940



# AMERICAN AIRLINES

INC.



# AMERICAN AIRLINES INC.

**NOW!** **4** NON-STOPS  
**CHICAGO — NEW YORK**

**8** A.M. Ex-Sunday  
**12** NOON Daily  
**3** P.M. Daily  
**5** P.M. Daily

SYSTEM TIME TABLE EFFECTIVE APRIL 1, 1940

AIRLINES TICKET AGENCY of E. K. SMITH, Inc.  
 Vanderbilt 6-0100  
 41 EAST 42nd ST., NEW YORK

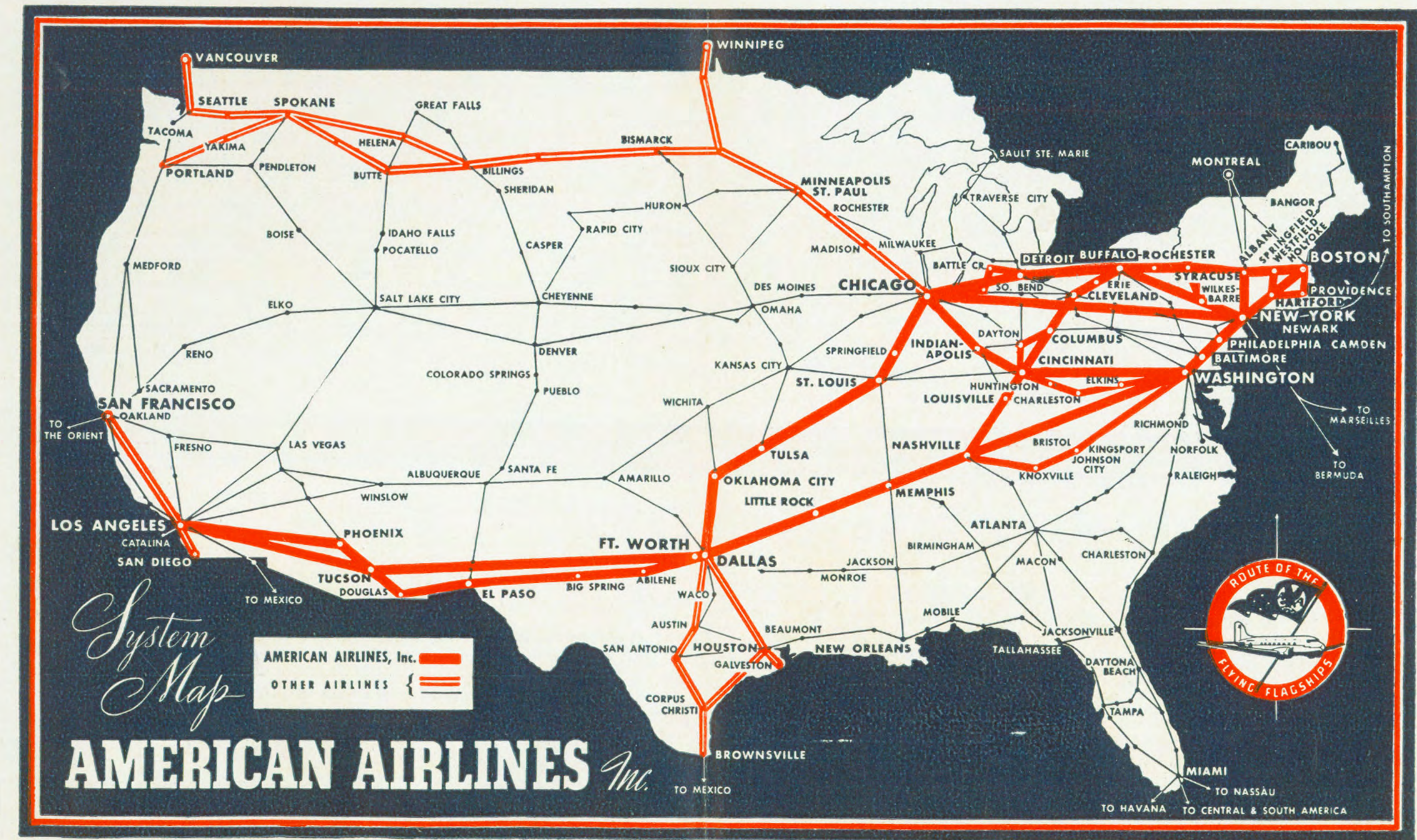
★ APRIL 1, 1940

# AMERICAN AIRLINES INC.



**FREQUENT DAILY SERVICE**

between  
**WASHINGTON**  
 and La Guardia Field  
**NEW YORK**





NEW YORK

BOSTON

SPRINGFIELD WESTFIELD HOLYOKE

NEWARK

HARTFORD

PROVIDENCE

FOR COMPLETE SCHEDULES BETWEEN BOSTON-WASHINGTON SEE TABLE 4

Table 3: SOUTHBOUND—Read Down. Columns include flight numbers (No. 35, 29, 15, 21, 33, 3, 27, 47, 31, 17, 1, 49, 25, 37, 11, 5, 7, 39) and departure times for various cities.

Table 3: NORTHBOUND—Read Down. Columns include flight numbers (No. 8, 8, 6, 36, 32, 14, 10, 34, 18, 44, 26, 42, 22, 12, 38, 40, 28, 2, 16) and departure times for various cities.

Equipment — Flagships on all flights. — Skysleepers on flights 7 and 12.

WASHINGTON

BOSTON

SPRINGFIELD WESTFIELD HOLYOKE

BALTIMORE

PHILADELPHIA

NEWARK NEW YORK

HARTFORD

PROVIDENCE

FOR COMPLETE SCHEDULES BETWEEN NEW YORK-WASHINGTON AND BETWEEN NEW YORK-BOSTON SEE TABLES 2 AND 3

Table 4: SOUTHBOUND—Read Down. Columns include flight numbers (No. 35, 29, 15, 21, 33, 3, 27, 47, 31, 17, 1, 49, 25, 37, 11, 5, 7, 39) and departure times for various cities.

Table 4: NORTHBOUND—Read Down. Columns include flight numbers (No. 8, 8, 6, 36, 32, 14, 10, 34, 18, 44, 26, 42, 22, 12, 38, 40, 28, 2, 16) and departure times for various cities.

Equipment — Flagships on all flights. — Skysleeper on Flights 7 and 12.

EXPLANATION OF REFERENCE MARKS ON PAGE 10

— PAGE FOUR —

PASSENGER FARES ON PAGE 11

DETROIT

BUFFALO

ROCHESTER

SYRACUSE

WILKES BARRE

NEW YORK

CHICAGO

BATTLE CREEK SOUTH BEND

NON-STOP FLIGHTS

FOR COMPLETE SCHEDULE BETWEEN BOSTON-CHICAGO SEE TABLE 7

Table 5: WESTBOUND—Read Down. Columns include flight numbers (No. 43, Niagara No. 9, No. 29, No. 61, The Eagle No. 21, No. 15, No. 45, The Falcon No. 27, Chicago No. 3, No. 63, The Arrow No. 17, Executive No. 41, No. 77, New Yorker No. 1, No. 5, Night Owl No. 7) and departure times for various cities.

Table 5: EASTBOUND—Read Down. Columns include flight numbers (Night Owl No. 8, The Niagara No. 10, No. 60, No. 30, No. 44, Manhattan No. 12, No. 78, The Eagle No. 22, Executive No. 40, No. 62, No. 2, The Falcon No. 28, The Yorker No. 4, The Arrow No. 16, No. 42, International No. 6) and departure times for various cities.

Equipment — Flagship Club Planes

SAN FRANCISCO

PHOENIX TUCSON

EL PASO

ST. LOUIS

OKLAHOMA CITY

CHICAGO

DETROIT

BUFFALO

NEW YORK

LOS ANGELES

FT. WORTH-DALLAS

Table 6: WESTBOUND—Read Down and Table 6: EASTBOUND—Read Down. Columns include flight numbers (Lone Star No. 1, No. 21, Longhorn No. 3, Lone Star No. 8, No. 6, Longhorn No. 14, No. 6) and departure times for various cities.

EXPLANATION OF REFERENCE MARKS ON PAGE 10

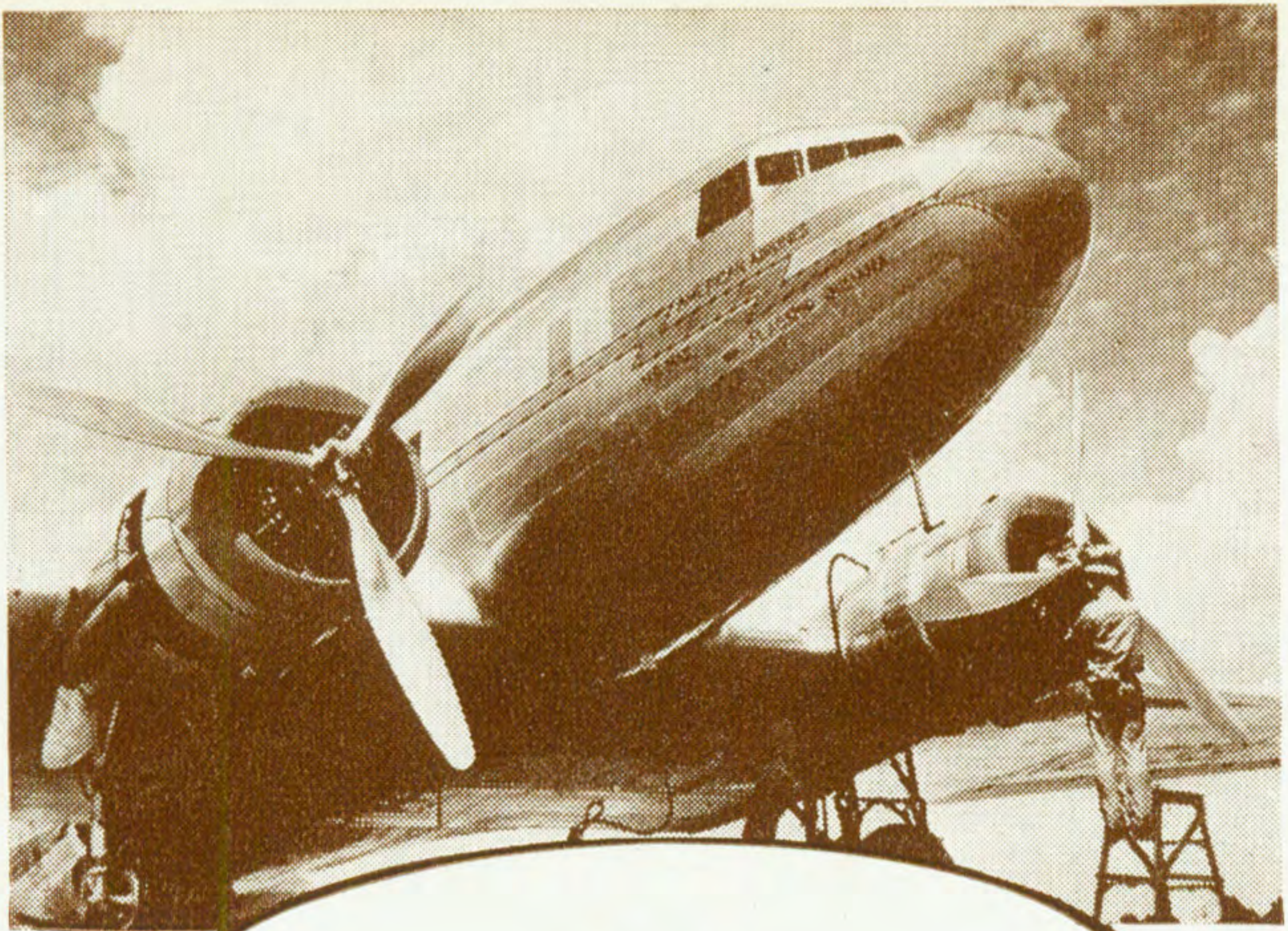
— PAGE FIVE —

PASSENGER FARES ON PAGE 11









14  
Flagships  
TO  
CHICAGO

with  
**NON-STOP**  
 AT  
**8 am    12 noon    3 pm    5 pm**

*“Go When You Want to Go”*

|          |         |          |
|----------|---------|----------|
| 7:00 am  | 2:30 pm | 5:30 pm  |
| 7:30 am  | 3:00 pm | 6:00 pm  |
| 8:00 am  | 3:10 pm | 9:10 pm  |
| 12 noon  | 3:15 pm | 12:45 am |
| 12:10 pm | 5:00 pm |          |

For reservations, call your Travel Agent or

**AMERICAN  
 AIRLINES**

**HAve myr 6-5000**

TICKET OFFICES:  
45 VANDERBILT AVE.

AND ROCKEFELLER CENTER AT 18 W. 49th ST.

AA



# Memo

Frequent Flagships Daily to  
Washington from La Guardia Field  
only 35 min. from  
Mid-Manhattan

**"Go When You Want to Go"**

### Leave New York

|          |         |          |
|----------|---------|----------|
| 7:00 am  | 1:00 pm | 5:40 pm  |
| 9:00 am  | 2:30 pm | 7:05 pm  |
| 10:00 am | 3:15 pm | 10:35 pm |
| 11:55 am | 4:15 pm |          |

For reservations, call your Travel Agent or

# AMERICAN AIRLINES

HAve myr 6-5000

TICKET OFFICES:  
45 VANDERBILT AVE.

AND ROCKEFELLER CENTER AT 18 W. 49th ST.

*W.*