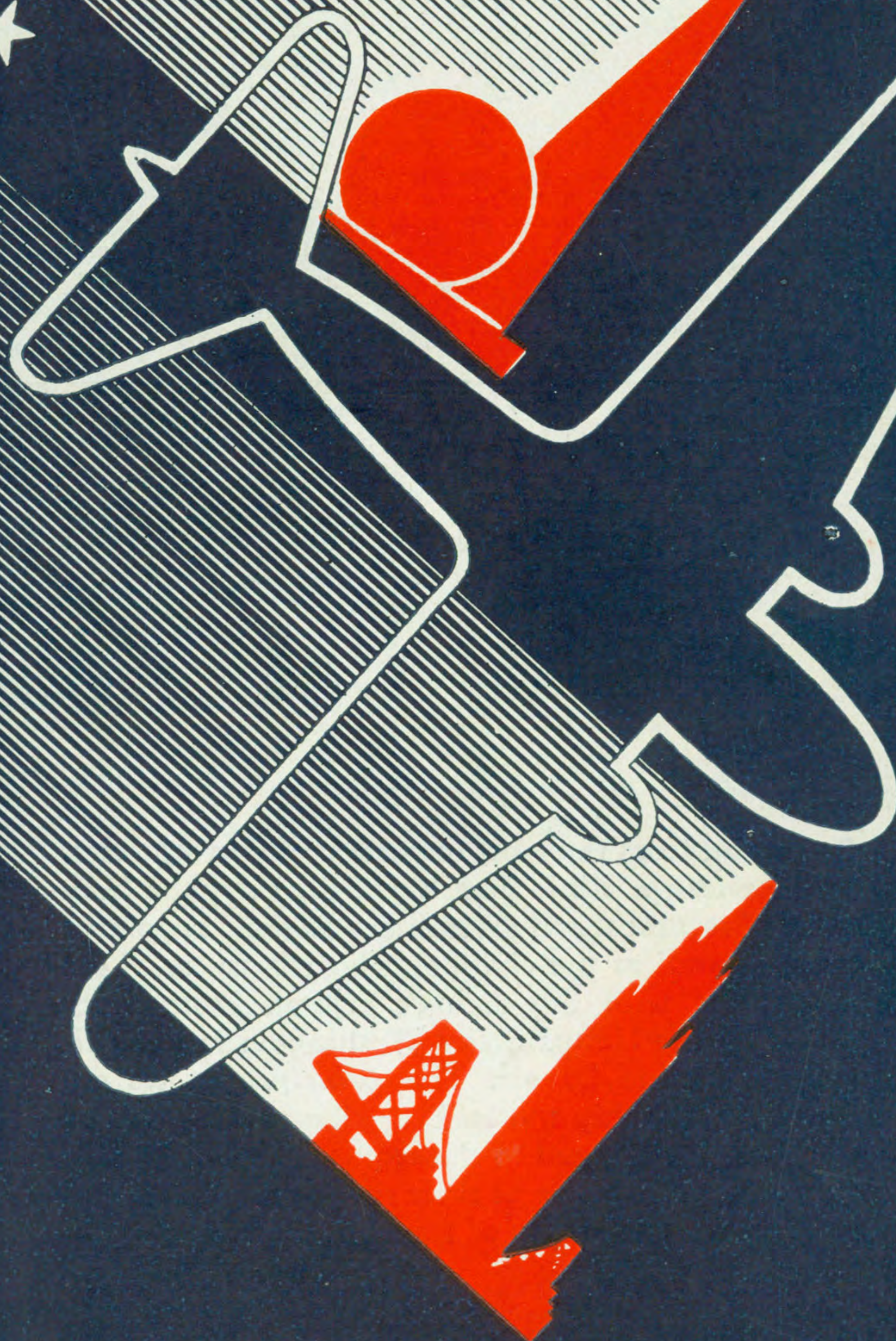


★
SEPT. 29, 1940

AMERICAN AIRLINES INC.



THE *World's Fair* LINE

AMERICAN AIRLINES *Inc.*



American Flagships

SYSTEM TIME TABLE EFFECTIVE SEPT. 29, 1940

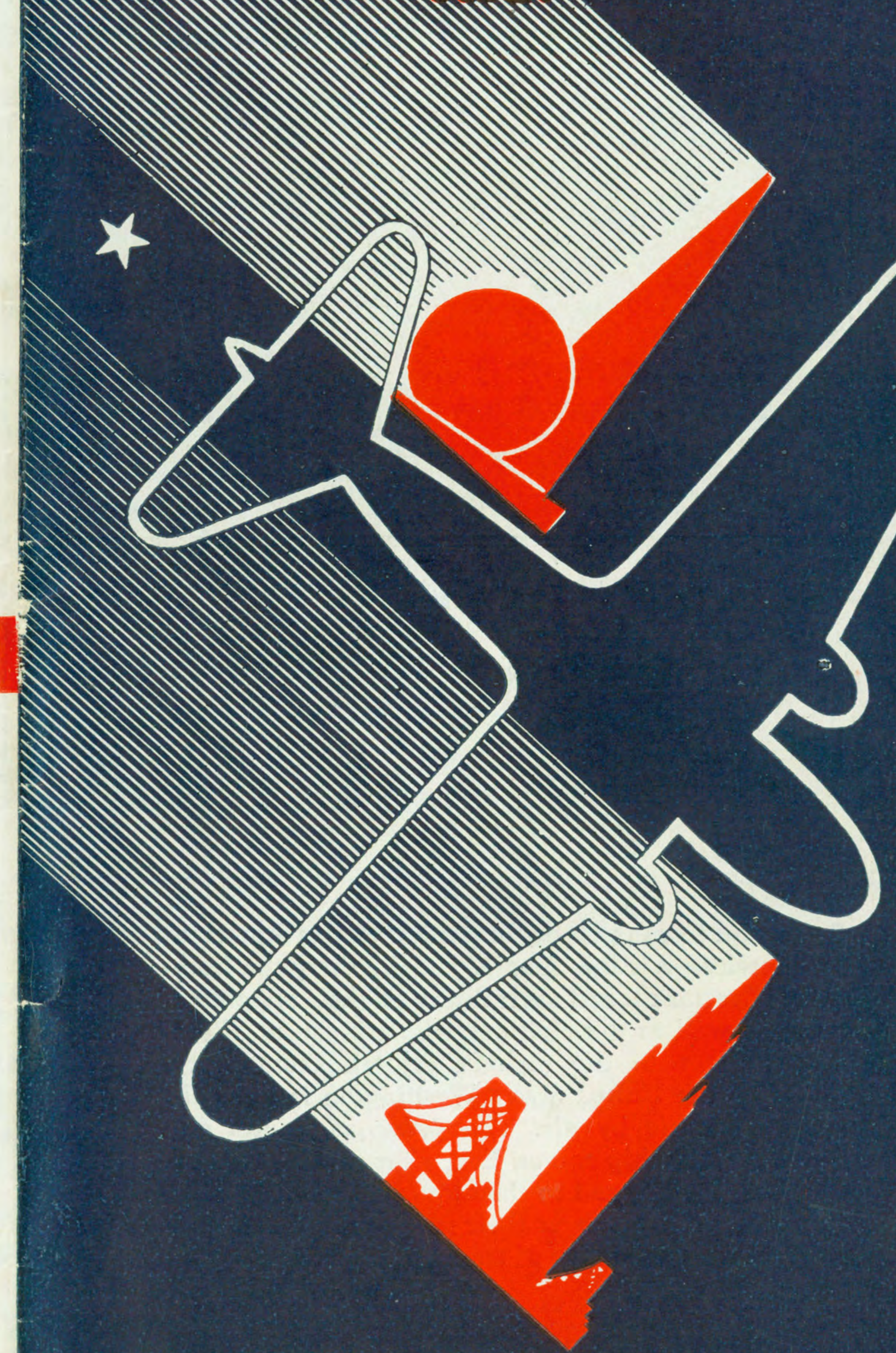
Carlson



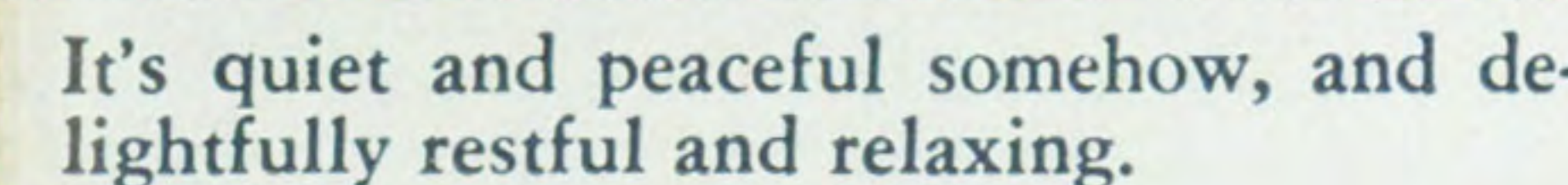
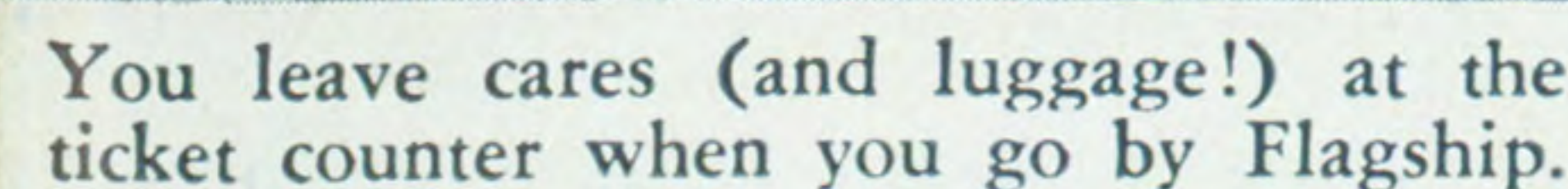
★
SEPT. 29, 1940

AMERICAN AIRLINES

INC.



THE *World's Fair* LINE



Traveling between New York and Chicago?

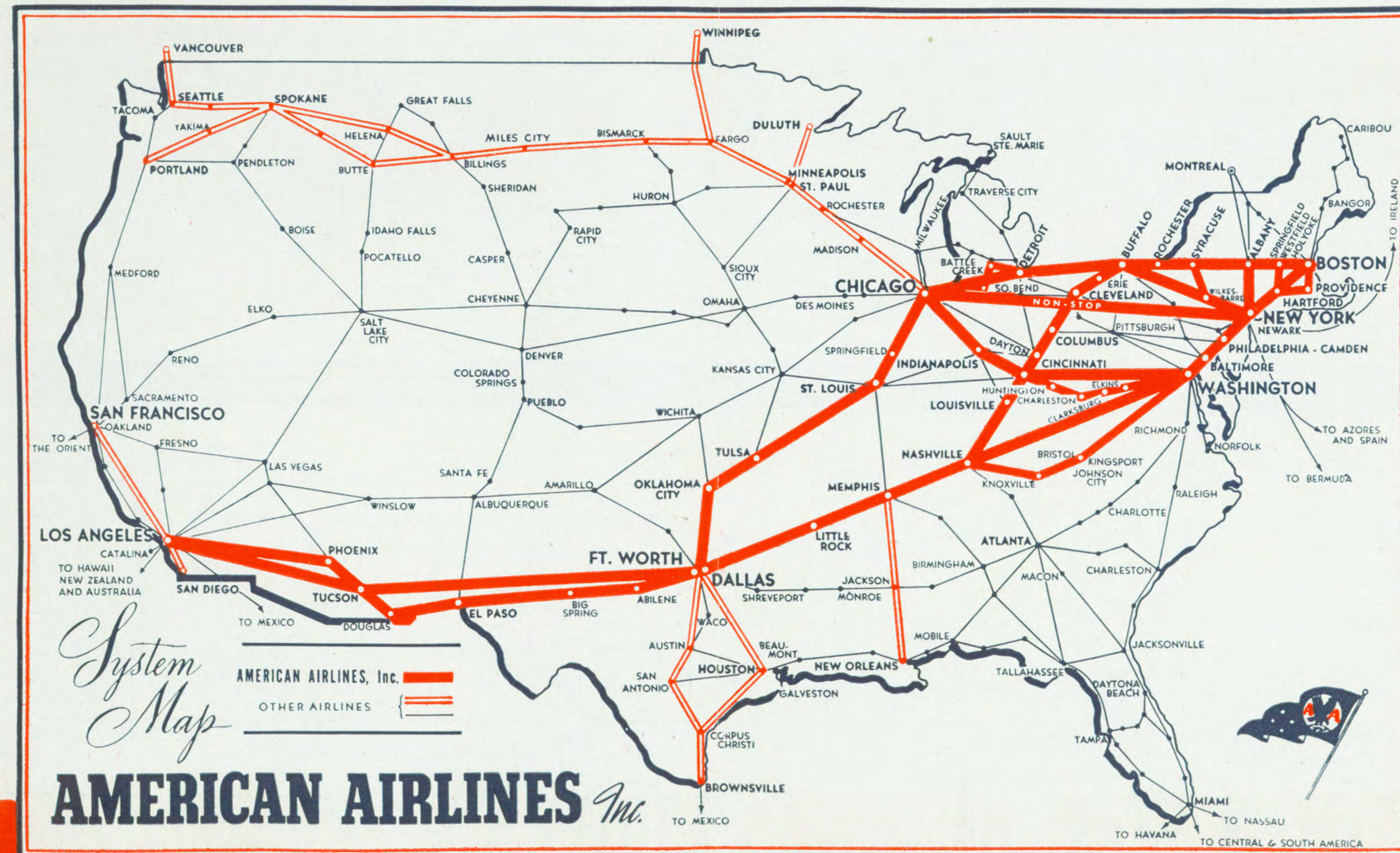
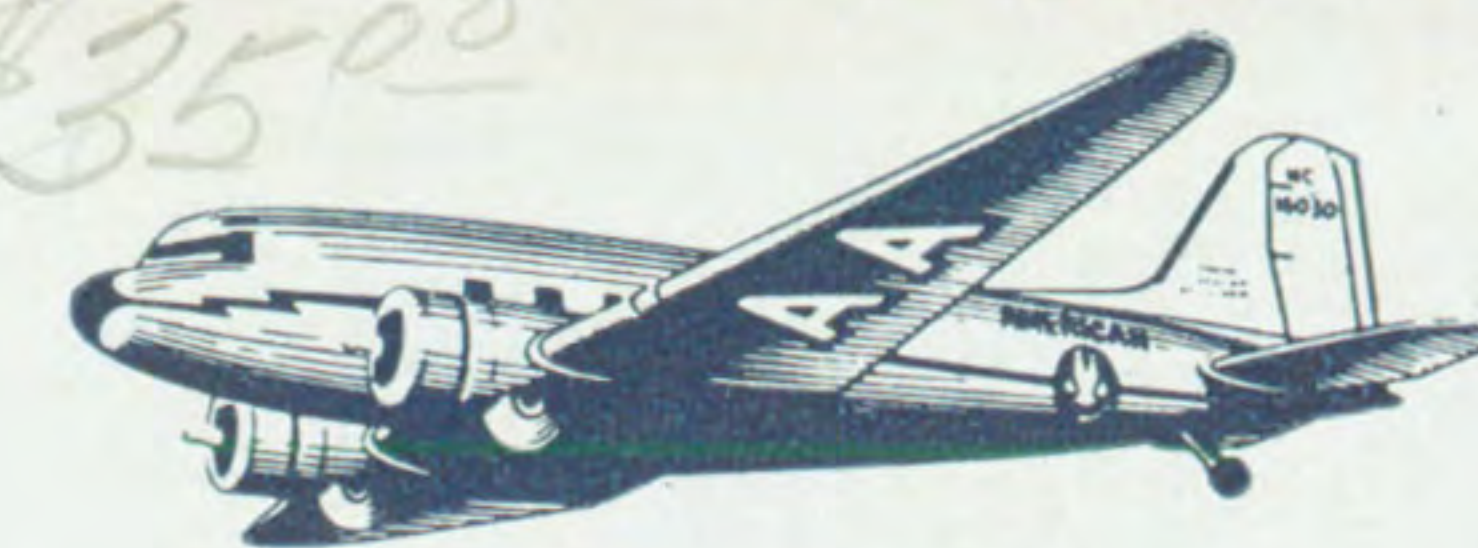
It's a Pleasure by American!

15 Flights

EACH WAY DAILY

★ 4 NON-STOP

at 8_{AM} 12_{NOON} 3_{PM} 5_{PM}



BOSTON — NEW YORK

Mls.	TABLE 1 WESTBOUND — Read Down		43 Ex. Sun.	81 Sun. Only	47 Ex. Sun.	55 Daily	93 Ex. Sun.	83 Sun. Only	15 Ex. Sun.	71 Daily	21 Daily	53 Daily	95 Ex. Sun.	3 Daily	27 Daily	23 Daily	35 Daily	57 Daily	17 Daily	1 Ex. Sat.	49 Daily	97 Daily	25 Daily	37 Ex. Sat.	45 Ex. Sat.	5 Daily	7 Daily	39 Ex. Sat.	
0	BOSTON	(E.T.)	Lv	am	am	am	am	am	am	am	am	pm	pm	pm	pm	pm	pm	pm	pm	pm	pm	pm	pm	pm	pm	pm	pm	pm	pm
50	Providence	"	Lv	7.00 7.30	7.00 7.30	7.10	8.20	9.25	9.40	9.55	10.15	10.20	12.10	12.55 1.25	1.20	2.00	2.50	2.55 3.25	3.20	4.00	4.20	5.00 5.30	5.20	6.20	7.30	8.30	9.20	10.00	
115	Springfield	Westfield	"	Lv	—	—	—	10.16	—	10.58	—	—	1.16	—	—	—	—	—	—	—	—	4.36	—	—	—	—	—	—	
207	Holyoke																												
115	Hartford	"	Lv	—	8.09	8.00	—	10.40	10.49	—	—	—	1.40	—	—	—	3.40	—	—	—	—	5.00	—	—	—	—	9.20	—	
207	NEW YORK	"	Ar	8.37 am	8.53 am	8.44 am	9.40 am	11.24 am	11.33 am	11.32 am	11.40 am	1.30 pm	2.24 pm	2.32 pm	2.40 pm	3.20 pm	4.24 pm	4.32 pm	4.40 pm	5.20 pm	5.40 pm	5.44 pm	6.37 pm	6.40 pm	7.40 pm	9.07 pm	10.04 pm	11.20 pm	

Mls.	TABLE 1 EASTBOUND — Read Down		8 Daily	52 Ex. Sun.	56 Ex. Sun.	36 Daily	92 Ex. Sun.	50 Ex. Sun.	32 Daily	14 Daily	30 Daily	70 Daily	10 Daily	34 Daily	94 Daily	18 Daily	42 Daily	44 Ex. Sat.	26 Daily	22 Daily	46 Daily	38 Daily	58 Ex. Sat.	28 Ex. Sat.	2 Daily	16 Daily	
0	NEW YORK	(E.T.)	Lv	am	am	am	am	am	pm	pm	pm	pm	pm	pm	pm	pm	pm	pm	pm	pm	pm	pm	pm	pm	pm	pm	pm
92	Hartford	"	Ar	6.35 7.20	7.00	7.50	9.30	9.35	*12.05	*1.05	1.30	2.15	2.05	3.05	3.20	3.30	4.05	4.30	5.07 5.52	*5.32	*6.05	*6.30	7.30	8.20	9.40	10.45	
115	Springfield	Westfield	"	Ar	—	—	10.43	—	—	—	2.24	—	—	4.28	—	—	—	—	—	—	—	—	—	—	—	—	
207	Holyoke																										
115	Hartford	"	Ar	—	—	—	—	—	—	—	—	2.43	—	—	—	—	—	—	—	—	—	—	—	—	—	—	
157	Providence	"	Ar	7.55	8.15	9.05	10.45	—	1.05	2.20	3.04	3.32	3.05	4.20	—	—	5.05	5.45	6.41	6.47	—	7.30	8.45	9.35	11.00	—	
207	BOSTON	"	Ar	8.25 am	8.15 am	9.05 am	10.45 am	12.20 pm	1.35 pm	2.20 pm	3.04 pm	3.32 pm	3.35 pm	4.20 pm	—	4.45 pm	5.35 pm	6.45 pm	6.41 pm	6.47 pm	7.20 pm	8.00 pm	8.45 pm	9.35 pm	11.30 pm	12.00 pm	

TABLE 1		8	52	56	36	92	50	32	14	30	70	10	34	94	18	42	44	26	22	46	38	58	28	2	16
Mls.	EASTBOUND—Read Down	Daily	Ex. Sun.	Ex. Sun.	Daily	Ex. Sun.	Ex. Sun.	Daily	Daily	Daily	Daily	Daily	Daily	Daily	Daily	Daily	Ex. Sat.	Daily	Daily	Daily	Daily	Ex. Sat.	Ex. Sat.	Daily	Daily
0	NEW YORK.....(E.T.)	Lv	am	am	am	am	am	pm	pm	pm	pm	pm	pm	pm	pm	pm	pm	pm	pm	pm	pm	pm	pm	pm	pm
92	Hartford	Ar	6.35	7.00	7.50	9.30	9.35	11.05	*1205	*1.05	1.30	2.05	3.05	3.20	3.30	4.05	4.30	5.07	5.32	6.05	6.30	7.30	8.20	9.40	10.45
	Springfield		7.20	—	—	—	10.20	—	—	2.15	—	—	—	4.05	—	—	—	5.52	—	—	—	—	8.20	10.25	—
....	Westfield	Ar	—	—	—	—	10.43	—	—	—	2.24	—	—	4.28	—	—	—	—	—	—	—	—	—	—	—
	Holyoke		—	—	—	—	—	—	—	—	—	—	—	—	—	—	—	—	—	—	—	—	—	—	—
	Hartford	Ar	—	—	—	—	—	—	—	—	2.43	—	—	—	—	—	—	—	—	—	—	—	—	—	—
157	Providence	Ar	7.55	—	—	—	—	1.05	—	—	—	3.05	—	—	—	5.05	—	—	—	—	—	—	—	—	—
207	BOSTON	Ar	8.25	8.15	9.05	10.45	12.20	1.35	2.20	3.04	3.32	3.35	4.20	—	4.45	5.35	5.45	6.41	6.47	7.20	7.30	8.45	9.35	11.00	12.00
			am	am	am	am	am	pm	pm	pm	pm	pm	pm	pm	pm	pm	pm	pm	pm	pm	pm	pm	pm	pm	pm

Equipment—Skysleepers on Flights 7 and 46—Douglas Flagships on all others Flights.

NEW YORK — BUFFALO — DETROIT — CHICAGO

TABLE 2																						
Mls.	WESTBOUND—Read Down	43 Ex.Su.	1-25 Daily	The Niagara ★ 9 Daily	29 Daily	31 Ex.Su.	61 Daily	The Eagle ★ 21 Daily	15 Daily	45 Daily	47 Ex. Sa.	19 Daily	The Falcon ★ 27 Daily	The Chica- goan ★ 3 Daily	23 Daily	The Arrow ★ 17 Daily	63 Daily	77 Daily	The Ex- cutive ★ 41 Daily	The New Yorker ★ 1 Daily	5 Daily	The Night Owl ★ 7 Daily
0	NEW YORK (E.T.)	Lv	am	am	am	am	am	am	pm	pm	pm	pm	pm	pm	pm	pm	pm	pm	pm	pm	pm	am
100	Wilkes-Barre	Lv	* 7.05	* 7.15	* 8.00	* 8.05	10.55	*12.00	*12.10	—	—	2.50	* 3.00	3.10	3.35	* 5.00	* 5.20	—	* 5.30	* 6.20	9.30	12.45
226	Syracuse	Ar	—	—	—	9.37	12.45	—	—	—	—	—	—	—	—	—	6.53	—	—	—	—	—
226	Syracuse	Lv	—	—	—	9.47	12.55	—	—	—	—	—	—	—	—	—	7.03	—	—	—	—	—
298	Rochester	Lv	VIA	—	—	10.29	1.37	—	—	—	—	VIA	—	—	—	—	7.45	—	—	—	—	—
353	BUFFALO	Ar	Wash- ing- ton	9.15	NON-STOP	10.58	2.06	NON-STOP	2 10	—	—	Wash- ing- ton	NON-STOP	* 5.10	VIA	NON-STOP	8.14	—	—	8.20	11.30	2.45
353	BUFFALO	Lv	—	9.25	—	11.08	—	—	2 20	—	—	—	—	5.20	Wash- ing- ton	—	—	—	8.32	11.42	2.57	
547	DETROIT	Ar	—	11.03	—	12.43	—	—	3 58	—	—	—	—	6.58	—	—	—	—	9.02	10.07	1.17	4.32
547	DETROIT	Lv	* 7.25	*11.15	—	*12.55	—	—	4 10	* 5.00	* 6.00	—	—	7.10	—	—	—	—	9.14	1.29	* 4.44	
661	Battle Creek	Lv	—	—	—	—	—	—	5 06	—	—	—	—	—	—	—	—	—	—	—	—	—
731	South Bend	Lv	7.47	—	—	—	—	—	—	—	—	—	—	7.32	—	—	—	—	—	—	—	—
807	CHICAGO	Ar	8.25	12.53	12.00	11.40	1.40	3.40	5.11	5.45	6.45	8.46	6.40	8.10	8.45	8.40	10.40	9.59	10.40	2.14	5.29	
			am	pm	am	pm	pm	pm	pm	pm	pm	pm	pm	pm	pm	pm	pm	pm	pm	pm	am	am

	TABLE 2		The Nia- gara						The Man- hattan		The Eagle		The Ex- cutive		The Falcon		The New Yorker		The Arrow				The Inter- national		The Night Owl	
Mls.	EASTBOUND—Read Down		★ 10 Daily	60 Daily	30 Daily	26 Daily	★ 18 Ex.Su.	44 Ex.Su.	★ 12 Daily	56-58 Daily	22 Daily	62 Daily	78 Daily	40 Daily	24 Daily	★ 2 Daily	28 Daily	4 Daily	20 Daily	16 Daily	42 Daily	46 Ex.Sat	6 Daily	8 Daily		
0	CHICAGO	(C.T.)	Lv	am	am	am	am	am	am	am	am	pm	pm	pm	pm	pm	pm	pm	pm	pm	pm	pm	pm	am		
76	South Bend	"	Lv	* 7.00	* 8.00	9.00	9.05	*11.15	*11.45	*11.45	*12.00		*12.05		2.00	2.30	* 3.00	4.30	* 4.55	* 5.00	6.05	7.40	8.40	12.01		
146	Battle Creek	(E.T.)	Lv	7.39												2.09										
260	DETROIT	"	Ar	9.48				1.20	2.19																	
	DETROIT	"	Lv	10.00				2.13	3.21																	
503	BUFFALO	"	Ar	11.24				3.55	4.05																	
	BUFFALO	"	Lv	*11.34	11.41	NON-STOP	VIA Wash- ington	1.15	1.25		NON-STOP	4.10	3.53		VIA Wash- ington	5.18	5.30	* 7.04	8.38	VIA Wash- ington	8.53	10.14	11.14	2.35		
558	Rochester	"	Lv		12.15			4.05				4.44				* 7.04	8.48					11.26	2.45			
630	Syracuse	"	Ar		12.47							5.16										1.00	* 4.17			
630	Syracuse	"	Lv		*12.57							5.26														
756	Wilkes-Barre	"	Lv		0 1.57																					
807	NEW YORK	"	Ar	1.23	2.49	12.55	4.30	3.14	5.54	7.15	4.55	6.54		6.53	9.25	8.53	7.55	10.37	12.07	9.55			2.49	6.06		
				pm	pm	pm	pm	pm	pm	pm	pm	pm	pm	pm	pm	pm	pm	pm	pm	pm	pm	pm	am	am		

EXPLANATION OF REFERENCE MARKS
ON PAGE 12

PASSENGER FARES
ON PAGE 13

AMERICAN AIRLINES Inc.

— PAGE TWO —

BOSTON — CHICAGO

FOR COMPLETE BOSTON-NEW YORK SERVICE—SEE TABLE 4

Mls.	TABLE 3 WESTBOUND—Read Down	71 Daily	55-61 Daily	The Eagle ★ 21 Daily	15 Daily	The Falcon ★ 27 Daily	The Chica- goan ★ 3 Daily	The Arrow ★ 17 Daily	17-63 Daily	77 Daily	The Ex- cutive ★ 17-41 Daily	The New Yorker ★ 49-1 Daily	5 Daily	The Night Owl ★ 39-7 Daily
0	BOSTON (E.T.)	Lv	am	am	am	am	am	am	am	am	am	am	am	am
50	Providence	Lv	10.15	8.20	10.20	9.55	1.20	1.20	3.20	3.20	5.30	3.20	4.20	7.30
115	Westfield	Lv	—	—	—	—	—	—	—	—	—	—	—	8.00
115	Holyoke	Lv	—	—	—	—	—	—	—	—	—	—	—	—
207	NEW YORK	Ar	8.37	8.53	8.44	9.40	11.24	11.33	11.32	—	—	—	—	—

Mls.	TABLE 3 EASTBOUND—Read Down	Nia- gara ★ 10 Daily	60-34 Daily	70 Daily	30 Daily	18 Ex.Su.	44 Ex.Su.	Man- hattan ★ 12-38 Daily	The Eagle ★ 22 Daily	62-58 Daily	78 Daily	40-58 Daily	2 Daily	The Falcon ★ 28 Daily	The Arrow ★ 16 Daily	The Night Owl ★ 8 Daily
0	CHICAGO (C.T.)	Lv	am	am	am	am	am	am	am	am	am	am	am	am	am	am
76	South Bend	Lv	7.00	—	—	—	—	—	—	—	—	—	—	—	—	—
146	Battle Creek	Lv	7.39	—	—	—	—	—	—	—	—	—	—	—	—	—
260	DETROIT	Lv	9.48	—	—	—	—	—	—	—	—	—	—	—	—	—
503	DETROIT	Lv	10.00	—	—	—	—	—	—	—	—	—	—	—	—	—
503	BUFFALO	Lv	11.24	—	—	—	—	—	—	—	—	—	—	—	—	—
503	BUFFALO	Lv	11.34	—	—	—	—	—	—	—	—	—	—	—	—	—
558	Rochester	Lv	—	—	—	—	—	—	—	—	—	—	—	—	—	—
630	Syracuse	Lv	—	—	—	—	—	—	—	—	—	—	—	—	—	—
630	Syracuse	Lv	—	—	—	—	—	—	—	—	—	—	—	—	—	—
756	Wilkes-Barre	Lv	—	—	—	—	—	—	—	—	—	—	—	—	—	—
807	NEW YORK	Ar	1.23	2.49	12.55	3.14	5.54	4.55	6.54	—	—	—	—	—	—	—

Equipment—Douglas Flagships on all Flights.

WASHINGTON

NEW YORK

BOSTON

EXPLANATION OF REFERENCE MARKS
ON PAGE 12

PASSENGER FARES
ON PAGE 13

AMERICAN AIRLINES Inc.

— PAGE THREE —

NEW YORK — WASHINGTON

TABLE 4 SOUTHBOUND—Read Down				59	1	31 Ex. Sat. & Sun.	43	11	15	53	19	23	5	57	49	45	7
Mls.				Daily	Daily		Daily	Daily	Daily	Daily	Daily	Daily	Daily	Daily	Daily	Ex. Sat.	Daily
0	NEW YORK	(E.T.)	Lv	*6.00am	*7.05am	*8.15am	9.15am	11.40am	*11.55am	2.00pm	2.50pm	3.35pm	4.10pm	*5.05pm	*5.55pm	7.55pm	10.30pm
90	Philadelphia	"	Lv	6.51am	—	—	—	12*31pm	—	—	—	4.26pm	5.01pm	—	—	—	11.21pm
182	Baltimore	"	Lv	7.35am	—	—	—	—	—	—	—	—	—	—	—	—	—
221	WASHINGTON	"	Ar	7.58am	8.35am	9.45am	10.45am	1.25pm	1.25pm	3.30pm	4.20pm	5.20pm	5.55pm	6.35pm	7.25pm	9.25pm	12.15am

TABLE 4 NORTHBOUND—Read Down				2	6	36 Ex. Sat. & Sun.	44	10	18	26	22	38	58	8	54	24	12	20
Mls.				Daily	Daily		Daily	Ex.Sun.	Daily	Daily	Daily	Daily	Daily	Daily	Daily	Daily	Daily	Daily
0	WASHINGTON	(E.T.)	Lv	*6.00am	*7.17am	*7.30am	10.26am	12*15pm	1.45pm	2.45pm	3.45pm	4.45pm	*5.45pm	*6.05pm	6.30pm	7.55pm	9.20pm	10.37pm
39	Baltimore	"	Lv	—	—	—	—	—	—	—	—	—	—	—	*6.56pm	—	—	—
131	Philadelphia	"	Lv	—	8.16am	8.29am	—	—	—	3.44pm	—	—	—	—	7.40pm	—	10.19pm	—
221	NEW YORK	"	Ar	7.30am	9.02am	9.15am	11.56am	1.45pm	3.15pm	4.30pm	5.15pm	6.15pm	7.15pm	7.35pm	8.26pm	9.25pm	11.05pm	12.07am

Equipment—Skysleepers on Flights 2, 5, 6, 7, 44—Douglas Flagships on all others except Flights 54, 59—Douglas Day Planes.

Equipment—Skysleepers on Flights 2, 5, 6, 7, 44—Douglas Flagships on all others except Flights 54, 59—Douglas Day Planes.

BOSTON — WASHINGTON

FOR COMPLETE BOSTON-NEW YORK SERVICE — SEE TABLE 1											FOR COMPLETE NEW YORK-WASHINGTON SERVICE — SEE TABLE 4										
TABLE 5		43	81	47	55	93	83	15	21	53	95	3	23	35	57	17	49	97	45	7	
WESTBOUND—Read Down		Ex Sun.	Su. On.	Ex Sun.	Daily	Ex Sun.	Su. On.	Ex Sun.	Daily	Daily	Ex Sun.	Daily	Daily	Daily	Daily	Daily	Daily	Daily	Ex. Sat.	Daily	
BOSTON	(E.T.)	Lv	am	am	am	am	am	am	am	pm	pm	pm	pm	pm	pm	pm	pm	pm	pm	pm	
Providence	"	Lv	7.00	7.00	* 7.10	* 8.20	9.25	9.40	10.20	*12.10	—	12.55	2.00	2.50	2.55	3.20	4.20	—	* 6.20	8.30	
Springfield	Westfield	Lv	* 7.30	* 7.30	—	—	—	10.10	10.25	—	—	1.25	—	—	3.25	—	—	—	—	—	
Westfield		Lv	—	—	—	—	10.16	—	—	—	—	—	—	—	—	—	—	—	—		
Holyoke		Lv	—	—	—	—	—	—	—	—	1.16	—	—	—	—	—	—	4.36	—		
Hartford	"	Lv	—	8.09	8.00	—	10.40	10.49	—	—	1.40	—	—	3.40	—	—	—	—	—		
NEW YORK	"	Ar	8.37	8.53	8.44	9.40	11.24	11.33	11.40	1.30	2.24	2.32	3.20	4.24	4.32	4.40	5.40	5.00	7.40	10.04	
NEW YORK	(E.T.)	Lv	9.15	—	e 9.00	e10.00	11.40	*11.55	*11.40	2.00	2.50	3.35	4.21	5.05	5.05	5.55	e 6.00	e 7.55	9.55	10.30	
Philadelphia	"	Ar	e10.20	—	—	*12.26	*12.26	e12.50	e12.50	2.40	3.30	4.20	5.05	5.20	6.05	6.20	7.25	e 7.30	e 9.25	11.16	
Baltimore	"	Ar	—	—	—	—	—	—	—	3.10	4.00	4.20	5.20	6.35	6.50	7.50	8.50	e 9.50	e 11.16	12.15	
WASHINGTON	"	Ar	10.45	—	e10.30	e11.30	1.25	1.25	am	pm	pm	pm	pm	pm	pm	pm	pm	pm	pm	pm	

"AMERICAN" offers the most frequent service

NEW YORK - CHICAGO

Including 4
NON-STOPS
each way at

8 A.M. Daily 12 NOON Daily 3 P.M. Daily 5 P.M. Daily

COMPLETE SCHEDULES ON PAGE 2

EXPLANATION OF REFERENCE MARKS
ON PAGE 12

PASSENGER FARES
ON PAGE 13

AMERICAN AIRLINES Inc.

— PAGE FOUR —

WASHINGTON — CINCINNATI — CHICAGO CONNECTIONS TO THE NORTHWEST

FOR COMPLETE NEW YORK-WASHINGTON SERVICE — SEE TABLE 4

FOR COMPLETE NEW YORK-CHICAGO SERVICE — SEE TABLE 2

TABLE 6															
		57	The President 23 Daily	The Postmaster 19 Daily	The West Virginian 51-55 Daily	59 Daily	The Senator 25 Daily	Read Down	Read Up	The West Virginian 50 Daily	The Senator 26 Daily	54 Daily	56-58 Daily	The Postmaster 24 Daily	The President 20 Daily
WASHINGTON	(E.T.)	Lv	*6.50pm	*5.30pm	*4.30pm	1.40pm	*8.08am	8.50am	Lv	1.09pm	2.35pm	5.34pm	5.30pm	7.45pm	10.27pm
Elkins	"	Lv	—	—	—	2.51pm	—	—	Ar	*12.06pm	—	—	—	—	—
Clarksburg	"	Lv	—	—	—	—	9.23am	—	Ar	—	—	4.24pm	—	—	—
Charleston	"	Lv	—	—	—	3.44pm	10.14am	—	Ar	11.16am	—	3.36pm	—	—	—
Huntington	"	Lv	—	—	—	4.10pm	10.40am	—	Ar	10.51am	—	3.11pm	—	—	—
CINCINNATI	"	Lv	—	—	—	5.00pm	11.30am	11.35am	Ar	10.05am	*12.15pm	2.25pm	3.10pm	*5.15pm	7.57pm
CINCINNATI	"	Lv	—	—	—	5.30pm	—	11.45am	Ar	12.04pm	—	—	2.49pm	5.04pm	7.42pm
Indianapolis	(C.T.)	Lv	—	—	—	6.38pm	—	*11.45am	Ar	10.16am	—	—	1.01pm	3.16pm	—
CHICAGO	"	Lv	—	—	—	—	—	12.53pm	Ar	9.00am	—	—	11.45am	2.00pm	*4.55pm
Chicago	(C.T.)	Ar	—	—	—	—	—	—	Ar	7.40am	8.39am	—	—	1.46pm	3.55pm
Milwaukee	"	Lv	—	—	—	—	—	—	Ar	7.00am	—	—	—	—	—
Minneapolis	"	Lv	—	—	—	—	—	—	Ar	4.50am	—	—	—	—	—
Omaha	"	Lv	—	—	—	—	—	—	Ar	—	—	—	—	—	—
Denver	(M.T.)	Lv	—	—	—	—	—	—	Ar	—	—	—	—	—	—
Salt Lake City	"	Lv	—	—	—	—	—	—	Ar	—	—	—	—	—	—
Spokane	(P.T.)	Lv	—	—	—	—	—	—	Ar	—	—	—	—	—	—
Seattle	"	Lv	—	—	—	—	—	—	Ar	—	—	—	—	—	—
Vancouver	"	Lv	—	—	—	—	—	—	Ar	—	—	—	—	—	—

BOSTON, NEW YORK, WASHINGTON to CINCINNATI, INDIANAPOLIS and LOUISVILLE

57 Daily	3-19 Daily	9 Daily	21-51 Daily	1-25 Daily	59 Daily	1 Daily	Read Down	Read Up	4 Daily	50-18 Daily	26 Daily	56-58 Daily	58 Daily	54 Daily	24 Daily	8 Daily	20 Daily	52 Daily
2.55pm	12.55pm	—	10.20am	—	—	—	Lv BOSTON	(E.T.)	Ar	4.45pm	6.41pm	8.45pm	—	11.30pm	11.30pm	—	—	—
3.25pm	*1.25pm	—	—	—	—	—	Lv Providence	"	Ar	—	—	—	—	—	—	—	—	—
—	b 1.16pm	—	—	—	—	—	Lv Springfield	Westfield	Ar	—	—	—	—	—	—	—	—	—
—	b 1.40pm	—	—	—	—	—	Lv Westfield	Holyoke	Ar	—	—	—	—	—	—	—	—	—
4.32pm	2.32pm	—	11.40am	—	—	—	Lv Hartford	NEW YORK	Ar	3.30pm	*5.52pm	5.07pm	7.30pm	10.25pm	10.25pm	—	—	—
*5.05pm	2.50pm	—	*11.55am	*7.05am	*6.00am	—	Lv NEW YORK	"	Ar	3.15pm	4.30pm	7.15pm	—	8.26pm	9.25pm	—	12.07am	—
—	—	—	—	—	*6.51am	—	Lv Philadelphia	"	Ar	—	3.39pm	—	—	7.35pm	—	—	—	—
—	—	—	—	—	*7.35am	—	Lv Baltimore	"	Ar	—	—	—	—	*6.51pm	—	—	—	—
—	4.20pm	—	1.25pm	8.35am	*7.58am	—	Ar WASHINGTON	"	Lv	1.45pm	2.45pm	*5.45pm	—	6.30pm	7.55pm	—	10.37pm	—
6.35pm	*4.30pm	—	1.40pm	8.50am	*8.08am	—	Lv WASHINGTON	"	Ar	1.09pm	2.35pm	5.30pm	—	5.34pm	7.45pm	—	10.27pm	—
*6.50pm	—	—	2.51pm	—	—	—	Lv Elkins	"	Ar	12.06pm	—	—	—	—	—	—	—	—
—	—	—	3.44pm	—	9.23am	—	Lv Clarksburg	"	Ar	—	—	—	—	4.24pm	—	—	—	—
—	—	—	4.10pm	—	10.14am	—	Lv Charleston	"	Ar	—	—	—	—	3.36pm	—	—	—	—
9.47pm	7.27pm	—	5.00pm	11.35am	11.30am	—	Lv Huntington	"	Ar	11.16am	—	—	—	3.11pm	—	—	—	—
9.57pm	—	7.41pm	5.20pm	—	—	—	Lv CINCINNATI	(E.T.)	Ar	10.51am	*12.15pm	3.10pm	—	2.25pm	*5.15pm	—	7.57pm	—
9.38pm	7.22pm	—	5.01pm	—	—	—	Lv Cincinnati	(E.T.)	Ar	10.05am	—	—	—	—	—	—	—	—
—	—	—	5.30pm	11.45am	—	—	Lv Louisville	(C.T.)	Ar	9.51am	—	—	—	—	—	—	—	—
—	—	—	5.22pm	11.37am	—	—	Lv CINCINNATI	(E.T.)	Ar	8.12am	—	—	—	—	—	—	—	—
—	—	—	—	—	—	—	Lv INDIANAPOLIS	(C.T.)	Lv	12.04pm	2.49pm	1.01pm	—	5.04pm	3.16pm	—	—	—

CHICAGO and INDIANAPOLIS To LOUISVILLE and NASHVILLE

24-51 Daily	Read Down	TABLE 8	Read Up	4-25 Daily	8 Daily	52-19 Daily
2.00pm	Lv CHICAGO	(C.T.)	Ar	12.53pm	6.38pm	8.46pm
3.16pm	Lv Indianapolis	"	Ar	*11.37pm	*5.22pm	7.30pm
5.04pm	Ar CINCINNATI	(E.T.)	Lv	11.45pm	5.30pm	7.38pm
5.20pm	Lv CINCINNATI	(E.T.)	Ar	9.51pm	4.56pm	7.44pm
5.01pm	Ar LOUISVILLE	(C.T.)	Lv	8.12pm	3.17pm	*6.05pm
—	Ar NASHVILLE	"	Lv	*7.00pm	2.05pm	—

EXPLANATION OF REFERENCE MARKS
ON PAGE 12

CHICAGO and INDIANAPOLIS To DAYTON and COLUMBUS

24-8 Daily	56 Daily	Read Down	TABLE 9	Read Up	1-25 Daily	9-19 Daily
2.00pm	*11.45pm	Lv CHICAGO	(C.T.)	Ar	12.53pm	8.46pm
3.16pm	1.01pm	Lv Indianapolis	"	Ar	*11.37pm	7.30pm
5.04pm	2.49pm	Ar CINCINNATI	(E.T.)	Lv	11.45pm	7.38pm
5.13pm	3.00pm	Lv CINCINNATI	"	Ar	10.31pm	7.31pm
5.41pm	3.28pm	Ar DAYTON	"	Lv	10.04pm	7.04pm
6.18pm	4.05pm	Ar COLUMBUS	"	Lv	9.27pm	6.27pm

PASSENGER FARES
ON PAGE 13

The Southern Sunshine Route

COMPLETE COAST TO COAST SCHEDULES

WESTBOUND—READ DOWN

➤ FOR COMPLETE NEW YORK-WASHINGTON SERVICE—SEE TABLE 4 ◀

Mls.	TABLE 10	Sun Country Special 1 Daily	11 Daily	The Postmaster 19 Daily	The Plainsman 5 Daily	57 Daily	The Mercury Advance Section 33 Daily	Limited Section 3 Daily	15 Daily	The Southerner 7 Daily
0	BOSTON (E.T.)	Lv	b 9.25am	12.55pm	2.00pm	2.55pm	2.50pm	3.20pm		8.30pm
90	PHILADELPHIA	Lv		* 1.25pm		3.25pm	3.25pm			
182	WASHINGTON	Lv								
221	WASHINGTON	Lv								
221	WASHINGTON	Lv								
570	NEW YORK	Lv	* 7.05am	11.40am	2.50pm	4.10pm	* 5.05pm	* 4.45pm	* 5.10pm	EAL 10.30pm
665	KNOXVILLE (C.T.)	Lv	10.45am	3.55pm	8.34pm	10.50pm	8.40pm	9.05pm		11.21pm
818	NASHVILLE	Lv	11.49am	4.59pm	8.34pm	10.50pm	8.40pm	9.05pm		12.15am
818	NASHVILLE	Lv	* 12.04pm	* 5.19pm	8.45pm	10.50pm	8.40pm	9.05pm		12.27am
1018	MEMPHIS	Lv	1.26pm	6.41pm	10.07pm					
1018	MEMPHIS	Lv	1.38pm	6.51pm	10.43pm					
1148	Little Rock	Lv		7.57pm						
1453	DALLAS	Lv	4.21pm	9.56pm	1.26am	12.50am	1.15am			7.46am
1453	DALLAS	Lv	4.31pm	10.04pm	1.41am	1.05am	1.30am			7.54am
1483	FT. WORTH	Lv	4.51pm	10.24pm	x	x	x			8.14am
1483	FT. WORTH	Lv	* 5.15pm		x	x	x			* 8.34am
1623	Abilene	Lv	* 6.18pm							
1733	Big Spring	Lv	7.11pm							
2029	EL PASO	Lv	7.57pm		4.05am					10.48am
2029	EL PASO	Lv	8.07pm		* 4.17am					* 11.00am
2232	Douglas	Lv	9.28pm							
2333	TUCSON	Lv	10.13pm		6.06am	* 5.20pm	* 5.45am			
2443	PHOENIX	Lv	11.07pm		* 7.02am					1.15pm
2824	LOS ANGELES (P.T.)	Ar	12.20am		8.15am	7.15am	7.40am			2.28pm
	SAN FRANCISCO	Ar								* 5.53pm
	SAN DIEGO	Ar								* 5.15pm

CHICAGO—ST. LOUIS—DALLAS—FT. WORTH—LOS ANGELES

Via TULSA, OKLAHOMA CITY and THE SUN COUNTRY

Mls.	TABLE 11	Lone Star 1 Daily	9 Daily	21 Daily	Longhorn 5 Daily	TABLE 11	The Plainsman 6-2 Daily	Lone Star 8 Daily	28 Daily	8-6 Daily	Longhorn 14 Daily
0	NEW YORK (E.T.)	Lv	12.45am	* 8.00am	* 12.00pm	12.10pm	9.00am	8.30pm		8.30pm	
255	ST. LOUIS	Lv	2.57am	9.25am	2.20pm	2.20pm					
255	ST. LOUIS	Lv	* 7.25am	* 11.15am	* 5.00pm						
607	TULSA	Lv	8.40am	* 12.40pm	4.10pm	* 6.00pm					
718	OKLAHOMA CITY	Lv	10.26am	2.26pm	5.56pm	7.46pm					
900	DALLAS	Lv	* 10.38am	2.38pm		7.58pm					
930	FT. WORTH	Lv	1.08pm	5.08pm		10.28pm					
930	FT. WORTH	Lv	2.07pm	* 6.07pm		11.27pm					
930	FT. WORTH	Lv	3.20pm	7.20pm		12.40am					
930	FT. WORTH	Lv	3.48pm	7.48pm		1.08am					
930	DALLAS	Lv	4.31pm			1.41am					
930	FT. WORTH	Lv	5.15pm								
1131	Abilene	Lv	* 6.13pm								
1240	Big Spring	Lv	7.01pm								
1532	El Paso	Lv	7.57pm								
1734	Douglas	Lv	9.23pm								
1835	TUCSON	Lv	10.08pm								
1942	PHOENIX	Lv	10.57pm								
2300	LOS ANGELES (P.T.)	Ar	12.20am								
	SAN FRANCISCO (UAL)	Ar				11.38am					

EXPLANATION OF REFERENCE MARKS
ON PAGE 12

PASSENGER FARES
ON PAGE 13

AMERICAN AIRLINES Inc.

— PAGE SIX —

The Southern Sunshine Route

COMPLETE COAST TO COAST SCHEDULES

EASTBOUND—READ DOWN

➤ FOR COMPLETE WASHINGTON-NEW YORK SERVICE—SEE TABLE 4 ◀

Mls.	TABLE 10	4-50 Daily	Sun Country Special 2 Daily	The Plainsman 6 Daily	The Mercury Advance Section 44 Daily	Limited Section 4 Daily	58 Daily	The Southerner 8 Daily	8-24 Daily	12 Daily
0	SAN DIEGO (P.T.)	Lv	† 7.45am	† 10.55am	† 3.00pm	† 3.00pm		† 9.30pm		
0	SAN FRANCISCO	Lv	† 7.00am	† 9.00am	† 2.00pm	† 2.00pm		† 8.30pm		
0	LOS ANGELES	Lv	9.15am	* 12.30pm	* 4.30pm	* 5.10pm		11.05pm		
381	PHOENIX (M.T.)	Lv	* 12.35pm	3.50pm	8.20pm	9.00pm		2.25am		
491	TUCSON	Lv	1.27pm	4.42pm						
592	Douglas	Lv	2.12pm							
795	EL PASO	Lv	3.22pm	6.19pm				4.35am		
795	EL PASO	Lv	3.32pm	* 6.31pm				4.47am		
1091	Big Spring (C.T.)	Lv	* 6.22pm							
1201	Abilene	Lv	7.12pm							
1341	FT. WORTH	Lv	8.07pm	10.31pm				8.47am		
1341	FT. WORTH	Lv	8.27pm	10.46pm				9.07am		
1371	DALLAS	Lv	8.47pm	11.06pm				y		
1371	DALLAS	Lv	8.55pm	11.14pm				y		
1676	Little Rock	Lv								
1806	MEMPHIS	Lv	11.23pm	1.42am				11.50am		
1806	MEMPHIS	Lv	11.33pm	1.57am				* 12.02pm		
2006	NASHVILLE	Lv	12.50am	5.40am	6.20am	6.35am	10.30am	1.19pm		
2006	NASHVILLE	Lv	* 7.00am	5.55am	* 6.35am	* 12.00pm	1.31pm	2.05pm		
2159	Knoxville	Lv	2.13am							
2254	Johnson City (E.T.)	Lv								
2603	WASHINGTON	Lv	1.09pm	5.49am	10.16am		5.30pm	5.52pm	7.45pm	9.10pm
2603	WASHINGTON	Lv	1.45pm	* 6.00am	10.26am		* 5.45pm	* 6.05pm	7.55pm	9.20pm
2642	Baltimore	Lv								
2734	PHILADELPHIA	Lv		8.11am						
2824	NEW YORK	Lv	3.15pm	7.30am	9.02am	11.56am	7.15pm	7.35pm	9.25pm	11.05pm
	New York	Lv	3.30pm	b 7.50am	9.30am	* 1.05pm	* 1.05pm	c 7.30pm	c 8.20pm	9.40pm
	Hartford	Lv			b 10.20am	2.15pm	2.15pm			10.25pm
	Holyoke	Lv								
	Westfield	Lv			b 10.43am					
	Springfield	Lv								
	Providence	Lv								
	BOSTON	Lv	4.45pm	b 9.05am	1.45am	2.20pm	2.20pm	c 8.45pm	c 9.35pm	11.00pm

CLEVELAND—COLUMBUS—DAYTON—CINCINNATI

LOUISVILLE to NASHVILLE, MEMPHIS and WEST

WESTBOUND—Read Down EASTBOUND—Read Up

57 Daily	3 Daily	9-5 Daily	51 Daily	1 Daily	TABLE 12	4 Daily	58-56 Daily	8 Daily	52 Daily
pm	pm	am	pm	am	Lv New York (E.T.)	Ar	pm	pm	pm
10.5	2.22				Lv Buffalo Via AA	Ar	6.54		
5.45	4.45				Lv Detroit Via PCA	Ar	3.09		
	3.11				Lv Erie Via AA	Ar	3.05		
* 6.00	5.30				Lv CLEVELAND	Ar	12.01	5.00	7.13
	6.27				Lv Columbus	Lv	11.14	4.13	* 6.26
	7.04				Lv Dayton	Lv	10.34	3.33	5.46
	7.23				Lv CINCINNATI	Lv	10.01	3.00	5.13
9.57	7.41	5.20			Lv CINCINNATI	Ar	9.51	2.51	4.56
9.38	7.22	5.01			Lv LOUISVILLE (C.T.)	Lv	8.12	1.12	3.17
10.50	8.34				Lv NASHVILLE	Lv	* 7.00	* 12.00	2.05
	8.45				Lv NASHVILLE	Ar	5.40	11.47	1.19
	10.07				Lv Memphis	Lv	10.30	* 12.02	
	10.43				Lv Memphis	Ar		11.50	
	1.26				Lv Little Rock	Lv	2.10		
	4.21				Lv DALLAS	Lv	x		
	4.51				Lv FT. WORTH	Lv			
	7.57				Lv El Paso	Lv	8.20		
	10.08				Lv Tucson	Lv			
	10.57				Lv Phoenix	Lv			
	12.20				Lv LOS ANGELES (P.T.)	Lv	4.30		
	11.38				Ar San Francisco (UAL)	Lv	2.00	8.30	

EXPLANATION OF REFERENCE MARKS
ON PAGE 12

CHICAGO, ST. LOUIS, TULSA, OKLAHOMA CITY

to

SOUTH TEXAS and MEXICO

Long-horn 5 Daily				21 Daily	9 Daily	Lone Star 1 Daily	Read Down	TABLE 13	Read Up	Lone Star 8 Daily	28 Daily	6 Daily	Long-horn 14 Daily
pm	am	am	am							pm	pm	am	am
*12.10	* 1200N	* 8.00	12.45	Lv New York.....	(E.T.)	Ar	9.55	7.55	2.49	6.06			
2.20	-	9.26	2.57	Lv Buffalo.....	"	Ar	8.38	-	12.48	* 4.07			
* 5.00	-	*11.15	*7.25	Lv Detroit.....	"	Ar	* 7.04	-	11.14	2.35			
* 6.00	4.10	*12.40	8.40	Lv CHICAGO.....	(C.T.)	Ar	4.07	2.47	7.57	11.22			
7.46	5.56	2.26	10.26	Ar ST. LOUIS.....	"	Lv	2.30	* 1.10	6.20	9.45			
7.58	-	2.38	*10.38	Lv ST. LOUIS.....	"	Ar	2.18	-	6.08	9.33			
10.28	-	5.08	1.08	Lv TULSA.....	"	Ar	*12.00	-	3.50	* 7.15			
11.27	-	* 6.07	2.07	Lv OKLAHOMA CITY.....	"	Ar	11.07	-	2.57	6.22			
12.40	-	7.20	3.20	Ar DALLAS.....	"	Lv	9.55	-	1.45	5.10			
1.08	-	7.48	3.48	Ar FT. WORTH.....	"	Lv	9.27	-	1.17	4.42			
3.50	-	8.05	5.30	Lv Dallas.....	(BNF)(C.T.)	Ar	-	-	11.20	5.04			
-	-	-	-	Lv Ft. Worth.....	"	Ar	8.47	-	-	4.34			
5.47	-	9.52	7.05	Ar Houston.....	"	Lv	6.50	-	-	3.10			
-	-	-	7.30	Ar Galveston.....	"	Lv	-	-	-	2.35			
6.20	-	10.10	7.20	Ar San Antonio.....	"	Lv	-	-	9.00	2.37			
7.25	-	-	8.22	Ar Corpus Christi.....	"	Lv	-	-	8.00	1.37			
8.25	-	-	9.22	Ar Brownsville.....	"	Lv	-	-	7.00	12.35			
12.35	-	-	12.35	Ar Mexico City.(PAA)	"	Lv	-	-	1.20	7.45			
pm	pm	pm	pm				am	pm	pm	am			

PASSENGER FARES
ON PAGE 13

AMERICAN AIRLINES Inc.

— PAGE SEVEN —

BOSTON — ERIE — CLEVELAND
NEW YORK — ERIE

FOR COMPLETE BOSTON-NEW YORK SERVICE — SEE TABLE 1

FOR COMPLETE NEW YORK-BUFFALO SERVICE — SEE TABLE 2

25	49	77-63	49-97	23	21	71-61	Read Down	TABLE 14	Read Up	36	60-70	34	62-78	38	22	2
Daily	Daily	Daily	Daily	Daily	Daily	Daily				Daily	Daily	Daily	Daily	Daily	Daily	Daily
5.00pm	4.20pm	* 5.30pm	4.20pm	2.00pm	10.20am	10.15am	Lv BOSTON (E.T.)	Ar	10.45am	3.29pm		4.20pm	6.36pm	8.00pm	6.47pm	11.30pm
5.30pm							Lv Providence	Ar						7.30pm		11.00pm
							Lv Hartford	Ar								
							Lv Springfield	Ar								
							Lv Westfield	Ar								
							Lv Holyoke	Ar								
							Lv NEW YORK	Ar								
6.37pm	5.40pm						Lv NEW YORK (E.T.)	Ar	9.03am							
							Lv Syracuse	Ar								
							Lv Syracuse	Ar								
							Lv Rochester	Ar								
							Lv BUFFALO	Ar								
							Lv BUFFALO	Ar								
							Lv ERIE	Ar								
							Lv CLEVELAND	Ar								
9.45pm																

BOSTON, NEW YORK, BUFFALO, DETROIT to ST. LOUIS and KANSAS CITY

Read Down

FOR COMPLETE BOSTON-NEW YORK-CHICAGO SERVICE — SEE TABLE 3

TABLE 15	9	29	21	15	45	27	3	17	TABLE 15	44	12	28	4	16	46	6	8
WESTBOUND	Daily	Daily	Daily	Daily	Daily	Daily	Daily	Daily	EASTBOUND	Ex Sun.	Daily	Daily	Daily	Daily	Ex Sat.	Daily	Daily
Boston (E.T.)			10.20am	10.20am		*1.20pm	*1.20pm	3.20pm	Kansas City (C.T.)	d8.42am	d9.30am		d1.25pm		d5.00pm		d9.13pm
NEW YORK	*7.15am	*8.00am	*12.00N	*12.00N		*3.00pm	*3.10pm	*5.00pm	ST. LOUIS	18.45am	*1.10pm		2.30pm	*3.00pm	*5.45pm	*6.20pm	9.45pm
Buffalo	*9.25am	NON-STOP	NON-STOP	NON-STOP		NON-STOP	*5.20pm	NON-STOP	CHICAGO (C.T.)	*11.15am	*11.45am	*3.00pm	4.30pm	*5.00pm	7.40pm	8.40pm	12.01am
Detroit	*11.15am	NON-STOP	NON-STOP	NON-STOP		NON-STOP	*7.10pm	NON-STOP	Detroit (E.T.)	1.20pm	2.19pm	NON-STOP	*7.04pm	NON-STOP	10.14pm	11.14pm	2.35am
CHICAGO (C.T.)	12.00N	11.40am	3.40pm	5.11pm	*5.00pm	6.40pm	8.10pm	8.40pm	Buffalo	5.45pm	5.54pm	7.55pm	10.37pm	9.55pm		2.49am	6.06am
ST. LOUIS	Ar	2.26pm	2.16pm	5.56pm	7.46pm	8.46pm	10.46pm	10.46pm	NEW YORK	Ar							
Kansas City	Ar	d3.40pm	d3.40pm		d8.10pm				Boston	Ar	8.00pm	c9.35pm	12.00pm	12.00pm			8.25am

NEW YORK AND MAINE

EASTBOUND—Read Down

FOR COMPLETE NEW YORK-BOSTON SERVICE — SEE TABLE 1

WESTBOUND—Read Up

58	38	34	30	56	52	8	TABLE 16	93	27	57	45	5	7
Ex. Sat.	Daily	Daily	Daily	Ex. Sun.	Ex. Sun.	Daily	American Airlines	Ex. Sun.	Daily	Daily	Ex. Sat.	Daily	Daily
7.30pm	6.30pm	3.05pm	1.30pm	7.50am	* 7.00am	* 6.35am	Lv NEW YORK (E.T.)	Ar	11.24am	2.40pm	4.32pm	7.40pm	8.57pm
8.45pm	8.00pm	4.20pm	3.04pm	9.05am	8.15am	8.25am	Ar BOSTON	Lv	9.25am	* 1.20pm	2.55pm	* 6.20pm	7.20pm
							Boston-Maine Airways						
							Lv BOSTON (E.T.)	Ar	8.44am	12.59pm	2.42pm	6.07pm	7.02pm
							Ar PORTLAND	Lv	8.02am	12.17pm	2.00pm	5.25pm	6.20pm
							Ar Lewiston - Auburn	Lv	7.48am	11.58pm			
							Ar Augusta	Lv	7.34am	11.39pm			
							Ar Waterville	Lv	7.25am	11.25pm			
							Ar BANGOR	Lv	7.00am	11.00pm			

EXPLANATION OF REFERENCE MARKS
ON PAGE 12

PASSENGER FARES
ON PAGE 13

AMERICAN AIRLINES Inc.
— PAGE EIGHT —

BOSTON, MONTREAL, NEW YORK, BUFFALO, DETROIT to THE NORTHWEST

WESTBOUND — Read Down

FOR COMPLETE BOSTON-NEW YORK-CHICAGO SERVICE — SEE TABLE 3

EASTBOUND — Read Up

The Night Owl 7	5	The Arrow 17	The Chicagoan 3	The Falcon 27	45	The Eagle 21	29	TABLE 17	The Night Owl 8	30	18	Man-hattan 12	The Eagle 22	2	The Falcon 28	The New Yorker 4	The Arrow 16	Inter-national 6
Daily	Daily	Daily	Daily	Daily	Daily	Daily	Daily	* — Flies Over Niagara Falls	Daily	Daily	Ex. Sun.	Daily	Daily	Daily	Daily	Daily	Daily	Daily
pm 9.00	pm 5.00	pm 1.00	pm 3.20	pm 1.20	pm 1.20	am 8.00	am 10.20	(CCA)	pm 10.30	pm 3.04	pm 7.00	pm 8.00	pm 8.30	pm 11.10	pm 11.10	pm 12.00	pm 12.00	am
c 10.00	5.30pm	3.20pm	* 1.20pm			b 8.00	10.20pm	Lv Montreal (E.T.)	Ar	8.25pm	3.04pm	7.00pm	8.30pm	11.10pm	c 9.35pm	12.00pm	12.00pm	
								Lv NEW YORK	Ar	6.06pm	12.55pm	3.14pm	5.54pm	4.55pm	8.53pm	7.55pm	10.37pm	9.55pm
12.45	9.30pm	* 5.00pm	3.10pm	* 3.00pm		* 12.00pm	* 8.00pm	Lv Buffalo	Ar	4.07pm	NON-STOP	1.15pm	3.55pm	NON-STOP	* 6.54pm	NON-STOP	* 8.38pm	NON-STOP
2.57	11.42pm	NON-STOP	* 5.20pm	NON-STOP		NON-STOP	NON-STOP	Lv Detroit	Ar	2.35pm	* 11.39pm	2.19pm	3.55pm	NON-STOP	* 5.18pm	NON-STOP	* 7.04pm	NON-STOP
* 4.44	1.29pm	8.40pm	8.10pm	6.40pm	5.45pm	3.40pm	11.40pm	Ar CHICAGO (C.T.)	Lv	12.01pm	* 8.00pm	9.05pm	* 11.45pm	* 12.00pm	2.30pm	* 3.00pm	* 4.30pm	* 5.00pm
5.29pm	2.14pm																	
NWA 3	NWA 1	UAL 15	NWA 5	UAL 3	UAL 11	NWA 7	NWA 9	UAL 1	NWA 2	NWA 4	UAL 14	UAL 14	NWA 6	UAL 6	NWA 10	UAL 8	NWA 8	UAL 8
8.00pm	8.00pm	2.55pm	9.15pm	9.30pm	6.55pm	6.00pm	1.20pm	1.15pm	Lv Chicago (C.T.)	Ar	11.15pm	7.40pm	8.39pm	11.35pm	1.46pm	3.55pm	8.21pm	8.25pm
8.40pm	8.35pm						2.00pm		Lv Milwaukee	Ar	7.00pm							7.45pm
	4.15pm						2.40pm		Lv Madison	Ar	6.20pm							7.00pm
10.30pm	6.05pm	11.40pm					4.00pm		Lv Rochester	Ar				9.50pm				5.45pm
11.15pm	5.05pm						4.45pm		Lv Minneapolis	Ar	9.05pm	4.50pm		9.10pm	1.45pm			5.05pm
1.05pm	7.55pm	1.30pm					10.20pm		Lv Omaha	Ar	7.25pm	6.15pm	6.15pm	11.10pm				5.12pm
									Lv Fargo	Ar								
4.10pm	11.05pm	4.40pm							Lv Winnipeg	Ar								
5.50pm		6.15pm							Lv Billings (M.T.)	Ar	2.45pm	10.50pm		2.50pm				
									Lv Butte	Ar	1.15pm	9.20pm						
									Lv Denver	Ar								
6.40pm	2.30pm	7.05pm							Lv Salt Lake	Ar								
									Lv Spokane	Ar	10.15pm	6.30pm	5.50pm	5.50pm	10.40pm			
									Lv Portland	Ar			6.45pm	6.15pm	6.00pm	6.15pm		
8.40pm	4.50pm	3.46pm	9.00pm						Lv Seattle	Ar	8.30pm	4.00pm	5.30pm	5.05pm	5.00pm			
p 9.40pm	p 5.25pm	p 5.25pm	q 10.20am						Lv Vancouver	Ar	p 7.25pm	p 12.15pm	3.40pm	3.40pm	3.40pm			

BOSTON, NEW YORK, PHILADELPHIA and
WASHINGTON to SOUTH TEXAS and MEXICO

7	5	1	Read Down	TABLE 18	Read Up	6	2	12
Daily	Daily	Daily				Daily	Daily	Daily
8.15pm	2.00pm		Lv BOSTON (E.T.)	Ar	10.45am	b 9.05am		
10.15pm	4.10pm	* 7.05am	Lv NEW YORK	Ar	9.02am	7.30am	11.05pm	
	5.01pm		Lv PHILADELPHIA	Ar	8.11am		10.14pm	
11.57pm	* 6.07pm	8.47am	Lv WASHINGTON	Ar	* 7.07am	* 5.49am	9.10pm	
2.59am	9.09pm	* 12.04pm	Lv NASHVILLE (C.T.)	Ar		12.50am	3.48pm	
* 4.33am	10.43pm	1.38pm	Lv MEMPHIS	Ar	1.42am	11.23pm	2.23pm	
7.16am	1.26am		Lv DALLAS	Ar	11.14pm	8.55pm	* 11.30am	
7.44am			Lv FT. WORTH	Ar	10.46pm			
			Lv DALLAS (BNF) (C.T.)	Ar		5.04pm	11.20am	
9.36am	3.50am	5.25pm	Lv FT. WORTH	Ar	10.25pm	4.34pm		
			Lv Houston	Ar	8.30pm			
11.10am	5.47am	7.05pm	Lv Galveston	Ar	8.00pm	2.40pm		
11.58am		7.30pm	Lv San Antonio	Ar	8.25pm	2.37pm	9.00am	
	6.20am	7.20pm	Lv Corpus Christi	Ar	7.20pm	1.37pm	8.00am	
12.35pm	7.25am	8.22pm	Lv Brownsville	Ar	6.20pm	* 12.35pm	7.00am	
1.40pm	8.25am	9.22pm	Lv MEXICO CITY (PAA)	Ar	1.20pm	7.45am	1.20pm	
4.45pm	12.35pm	12.35pm						

Don't Forget American • New York-Chicago Non-Stop

COMPLETE SCHEDULES ON PAGE 2

EXPLANATION OF REFERENCE MARKS
ON PAGE 12

BOSTON, NEW YORK, PHILADELPHIA and
WASHINGTON to NEW ORLEANS

5	11	Read Down	TABLE 19	Read Up	8	2
Daily	Daily				Daily	Daily
2.00pm	* 8.20am	Lv BOSTON (E.T.)	Ar	c 9.35pm	b 9.05am	
4.10pm	11.40am	Lv NEW YORK	Ar	7.35pm	7.30am	
5.01pm	* 12.31pm	Lv PHILADELPHIA	Ar			
6.07pm	1.35pm	Lv WASHINGTON	Ar	* 5.52pm	* 5.49am	
9.09pm	* 5.19pm	Lv NASHVILLE (C.T.)	Ar	1.19pm	12.50am	
10.31pm	6.41pm	Lv MEMPHIS	Ar	* 12.02pm	11.33pm	
		Lv Memphis (CHI)	Ar	11.35am	10.35pm	
12.55am	7.55pm	Lv Jackson	Ar	10.20am	9.20pm	
2.10am	9.10pm	Lv New Orleans	Ar	9.00am	8.00pm	
3.30am	10.30pm					

MONTREAL — CHICAGO

Via DETROIT

FOR CONNECTIONS TO THE NORTHWEST—SEE TABLE 17

41	15	Read Down	TABLE 20	Read Up	12	4
Daily	Daily				Daily	Daily
4.00pm	8.00am	Lv MONTREAL (Via T.C.A.) (E.T.)	Ar	8.15pm		
4.55pm	8.55am	Lv Ottawa	Ar	7.20pm		
6.35pm	10.45am	Lv Toronto	Ar	5.40pm	10.10pm	
7.25pm	11.35am	Lv London	Ar	4.50pm	9.20pm	
8.10pm	12.20pm	Lv WINDSOR	Ar	4.00pm	8.30pm	
		Lv DETROIT (A.A.)	Ar	2.19pm	7.04pm	
9.14pm	4.10pm	Lv Battle Creek	Ar			
9.59pm	5.01pm	Lv CHICAGO (C.T.)	Ar	* 11.45am	4.30pm	

PASSENGER FARES
ON PAGE 13

AMERICAN AIRLINES Inc.
— PAGE NINE —

CALIFORNIA and ARIZONA To THE SOUTHEAST

EASTBOUND				WESTBOUND			
8 Daily	8 Daily	Read Down	TABLE 21	Read Up	33 Daily	33 Daily	1 Daily
8.30pm	8.30pm	Lv San Francisco (P.T.)	Ar	10.00am	10.00am		5.53pm
11.05pm	11.05pm	Lv LOS ANGELES (P.T.)	Ar	7.15am	7.15am	12.20am	2.28pm
12.25am	12.25am	Lv Phoenix (M.T.)	Ar	7.15am	7.15am	10.57pm	1.05pm
		Lv Tucson	Ar	5.05am	5.05am	10.08pm	
* 4.47am	* 4.47am	Lv El Paso	Ar	5.05am	5.05am	7.57pm	* 10.48am
8.47am	8.47am	Ar Ft. Worth (C.T.)	Lv	1.05am	1.05am	* 5.15pm	* 8.34am
		Ar Dallas	Lv			4.31pm	7.54am
Via Delta Air Lines							
		Lv Ft. Worth (C.T.)	Ar			2.53pm	
9.00am	9.28am	Lv Dallas	Ar	12.01am		2.25pm	
10.43am		Ar SHREVEPORT	Lv	10.50pm		1.14pm	
12.07pm		Ar Jackson	Lv	9.20pm		11.46am	
1.49pm		Ar BIRMINGHAM	Lv	7.35pm		10.06am	
2.55pm		Ar ATLANTA	Lv	6.30pm		9.00am	
Via American Airlines							
		Lv Dallas (C.T.)	Ar			7.16am	
1.17pm		Ar Nashville	Lv	9.20pm		2.59am	
Via Eastern Air Lines							
		Lv Nashville (C.T.)	Ar			2.85am	
1.35pm		Ar CHATTANOOGA	Lv	5.00pm		1.35am	
2.25pm		Ar ATLANTA	Lv	3.35pm		12.40am	
3.20pm		Ar Jacksonville (E.T.)	Lv	2.30pm		11.20pm	
6.30pm		Ar MIAMI	Lv	12.00am		9.00pm	

CLEVELAND, COLUMBUS, DAYTON, CINCINNATI, LOUISVILLE, NASHVILLE to NEW ORLEANS, SOUTH TEXAS and MEXICO

57 Daily	3 Daily	9 Daily	51 Daily	1 Daily	Read Down	TABLE 23	Read Up	4 Daily	58-56 Daily	8 Daily	52 Daily
		10.55am			Lv New York (E.T.)	Ar	6.54pm				
		2.22pm			Lv Buffalo	Ar	3.50pm				
	5.45pm	4.45pm		7.20am	Lv Detroit Via PCA	Ar	3.09pm			8.09pm	
		3.11pm			Lv Erie	Ar	3.05pm				
	6.00pm	* 5.30pm		* 8.30am	Lv CLEVELAND	Ar	12.01pm	5.00pm		7.13pm	
		6.27pm		9.27am	Lv COLUMBUS	Ar	11.06am	4.05pm	* 6.18pm		
		7.04pm		10.04am	Lv DAYTON	Ar	10.29am	3.28pm	5.41pm		
	7.23pm	7.31pm		10.31am	Ar CINCINNATI	Lv	10.01am	3.00pm	5.13pm		
				10.41am	Lv CINCINNATI	Ar	9.51am	2.51pm	4.56pm	7.44pm	
9.57pm		7.41pm	5.20pm	10.22am	Ar LOUISVILLE (C.T.)	Lv	8.12am	1.12pm	3.17pm	* 6.05pm	
9.38pm		7.22pm	5.01pm	11.34am	Ar NASHVILLE	Lv	* 7.00am	12.00pm	2.05pm		
10.50pm		8.34pm									
		8.45pm		* 12.04pm	Lv NASHVILLE (C.T.)	Ar	5.40am	11.47am	1.04pm		
		10.07pm		1.26pm	Ar MEMPHIS	Lv		10.30am	11.47am		
				12.55am	Lv Memphis (CHI) (C.T.)	Ar			11.35am		
		2.25am		9.25pm	Lv Jackson	Lv			10.20am		
		3.30am		10.30pm	Ar NEW ORLEANS	Lv			9.00am		
				10.43pm	Lv MEMPHIS (C.T.)	Ar					
		1.26am		4.21pm	Ar DALLAS	Lv	2.10am				
		x		4.51pm	Ar FT. WORTH	Lv					
				3.50am	Lv DALLAS (BNF) (C.T.)	Ar	10.55pm				
					Lv FT. WORTH	Ar					
		5.37am		7.05pm	Ar Houston	Lv	8.30pm				
				7.30pm	Ar Galveston	Lv	8.00pm				
		6.20am		* 7.20pm	Ar San Antonio	Lv	8.25pm				
		7.25am		8.22pm	Ar Corpus Christi	Lv	7.20pm				
		8.25am		9.22pm	Ar Brownsville	Lv	6.20pm				
		12.35pm		12.35pm	Ar MEXICO CITY (PAA)	Lv	1.20pm				

EXPLANATION OF REFERENCE MARKS
ON PAGE 12

CALIFORNIA and ARIZONA To SOUTH TEXAS and MEXICO

8 Daily	4 Daily	2 Daily	Read Down	TABLE 22	Read Up	1 Daily	3 Daily
8.30pm	2.00pm	7.00am	Lv San Francisco (UAL)	(P.T.) Ar			
9.30pm	3.00pm	7.45am	Lv San Diego (UAL or WAE)	" Ar			
11.05pm	* 4.30pm	9.15am	Lv LOS ANGELES	" Ar	12.20am	7.40am	
12.25am		* 12.35pm	Lv Phoenix	(M.T.) Ar	10.57pm		
	8.20pm	1.27pm	Lv Tucson	" Ar	10.08pm	* 5.30am	
* 4.47am		3.32pm	Lv El Paso	" Ar	7.57pm		
8.47am		8.07pm	Ar FT. WORTH (C.T.)	Lv	5.15pm		
	1.55am		Ar DALLAS	" Lv		1.30am	
9.00am		8.25pm	Lv Ft. Worth (BNF)	" Ar	4.34pm		
	3.50am		Lv Dallas (BNF)	" Ar	10.55pm		
11.05am	5.37am		Ar Houston (BNF)	" Lv	8.30pm		
11.45am			Ar Galveston (BNF)	" Lv	8.00pm		
	* 6.00am	10.10pm	Ar San Antonio (BNF)	" Lv	2.37pm	8.25pm	
12.35pm	7.25am		Ar Corpus Christi (BNF)	" Lv	1.37pm	7.20pm	
1.35pm	8.25am		Ar Brownsville (BNF)	" Lv	12.35pm	6.20pm	
4.45pm	12.35pm		Ar Mexico City (PAA)	" Lv	7.45am	1.20pm	

FLY
IT PAYS TO

OKLAHOMA CITY to WASHINGTON, PHILADELPHIA and NEW YORK Via DALLAS

FOR OKLAHOMA CITY-NEW YORK SERVICE VIA CHICAGO
SEE TABLE 11

5-44 Daily	9-2 Daily	Read Down	TABLE 24	Read Up	1-14 Daily	7-8 Daily
11.27pm	* 6.07pm	Lv OKLAHOMA CITY (C.T.)	Ar	6.22pm	11.07am	
12.40am	7.20pm	Ar DALLAS	Lv	5.10pm	9.55am	
2.10am	8.55pm	Lv DALLAS	" Ar	4.21pm	7.46am	
* 5.55am	11.33pm	Lv Memphis	" Ar	1.38pm	* 5.03am	
	1.05am	Lv Nashville	" Ar	* 12.04pm	3.29am	
	2.13am	Lv Knoxville	" Ar	10.45am		
10.16am	5.49am	Ar WASHINGTON (E.T.)	Lv	8.47am	12.27am	
10.26am	* 6.00am	Lv WASHINGTON	" Ar	8.35am	12.15am	
	7.30am	Ar Philadelphia	" Ar		11.21pm	
11.56am		Ar NEW YORK	" Lv	* 7.05am	10.30pm	
2.20pm	c 9.05am	Ar Boston	" Lv		8.30pm	

DAYTON to WASHINGTON PHILADELPHIA and NEW YORK

FOR COMPLETE CINCINNATI-WASHINGTON SERVICE—SEE TABLE 7

9-20	1-26 Daily	Read Down	TABLE 25	Read Up	11-51-8 Daily
7.04pm	10.04am	Lv DAYTON (E.T.)	Ar	5.41pm	
7.31pm	10.31am	Ar CINCINNATI	Lv	5.13pm	
7.57pm	* 12.15pm	Lv CINCINNATI	" Ar	5.00pm	
		Lv Huntington	" Ar	4.10pm	
		Lv Charleston	" Ar	3.44pm	
		Lv Elkins	" Ar	2.51pm	
10.27pm	2.35pm	Ar WASHINGTON	" Lv	1.40pm	
10.37pm	2.45pm	Lv WASHINGTON	" Ar	1.25pm	
	3.39pm	Ar Philadelphia	" Ar	* 12.31pm	
12.07am	4.30pm	Ar NEW YORK	" Lv	11.40am	

PASSENGER FARES
ON PAGE 13

TABLE INDEX — OFFICES AND GROUND SERVICE

GENERAL SALES OFFICE:—New York Municipal Airport, New York City. Cable Address—"AMAIR"

CHARLES A. RHEINSTROM, Vice President-Sales
J. HERMAN THEILIG, Mgr. Agency and Foreign Dept.
C. R. SMITH, President
M. T. STALLTER, Manager-Air Mail and Express
MELVIN D. MILLER, Manager of Passenger Sales
EDWARD G. BERN, Director of Publicity
VICTOR VERNON, Personnel Director

City	Table No.	Info.—Reservations	Ticket Office	Airport	Miles From City	Conveyance	Driving Time	*Fare
ABILENE, TEXAS	10, 11	Tel. 7021	Airport Terminal	Municipal	3½ E.	Taxi Service	15 min.	\$.50
AKRON, OHIO		Tel. Jefferson 5151		Municipal	4½ SE.	City Cab.	30 min.	.75
BALTIMORE, MD.	4, 5, 7, 10, 14	Tel. Riverside 0640	Airport Terminal	Logan Field	8 SE.	Community Cab.	40 min.	.75
BATTLE CREEK, MICH.	2, 3, 20	Tel. 4311	Airport Terminal	W. K. Kellogg	3 SW.	Yellow Cab.	15 min.	.75
BIG SPRING, TEXAS	10, 11	Tel. 1160	Airport Terminal	Am. Airlines Field	2½ W.		10 min.	a .50
BILLINGS, MONT.		Tel. 3207	% NWA—19½ North Broadway	Municipal	2 NW		10 min.	.50
BOSTON, MASS.	1, 3, 5, 7, 10, 14-19, 24	Tel. E. Boston 2000	140 Federal St., Statler Hotel Main Entrance	Municipal	1 E.	Frank McCann, Inc.	30 min.	.50
BRISTOL, VA.		Tel. Tri-City 7-4000	Airport Terminal	Tri-City	16 SW	Union Cab.	45 min.	b1.50
BUFFALO, N. Y.	2, 3, 11-15, 17, 23	Tel. Humbolt 8000	160 Franklin St., Hotel Statler Arcade	Municipal	7 E.	VanDyke Cab Co.	45 min.	1.00
CAMBRIDGE, MASS.		Tel. E. Boston 2000		Municipal	7	University Travel Co.	45 min.	.75
CHARLESTON, W. VA.	6, 7	Tel. South 44311	Airport Terminal	Wertz	9 W.	Jordan Taxi Service	50 min.	.75
CHICAGO, ILL.	2, 3, 6, 8, 9, 11, 13, 15, 17, 20	Tel. Portsmouth 7000	Palmer House Arcade-Shop 14	Municipal	12 SW	Cadillac Limousine	60 min.	1.00
CINCINNATI, OHIO	6-9, 12, 23	Tel. East 4700	Gibson Hotel	Lunken	6 E.	Yellow Cab.	35 min.	.75
CLARKSBURG, W. VA.	6, 7	Tel. 4690	Airport Terminal	Harrison County	7		15 min.	.75
CLEVELAND, OHIO	12, 14, 23	Tel. Orchard 3300	1012 Union Commerce Arcade	Municipal	12 SW	Yellow Cab.	40 min.	.75
COLUMBUS, OHIO	9, 12, 23	Tel. Fairfax 3165	20 E. Broad St.	Port Columbus	8 E.	Bluebird Air Service	40 min.	.75
DALLAS, TEXAS	10-13, 18, 21-24	Tel. 7-1501	Baker Hotel	Love Field	6 N.	Yellow Cab.	30 min.	.50
DAYTON, OHIO	9, 12, 23	Tel. Vandalia 4655		Meacham (Ft. Worth)	34 W.		80 min.	
DETROIT, MICH.	2, 3, 11-13, 15, 17, 20, 23	From Dayton dial 112-4655 Tel. Pingree 7000	Biltmore Hotel Lobby 1265 Washington Blvd.	Municipal Detroit City	11½ N. 6 NE	Liberty Cab Co. Checker Cab Co.	30 min. 40 min.	.75 .75
DOUGLAS, ARIZ.	10, 11	Tel. 160	Airport Terminal	International	21½ E.	Limousine Service	45 min.	.75
ELKINS, W. VA.	6, 7	Tel. 190	Airport Terminal	Municipal	3 S.	Taxi Service	10 min.	1.00
EL PASO, TEXAS	10-12, 21, 22	Tel. Main 1853	Hilton Hotel	Municipal	7 NE	Gainer's Cab & Air Mail	10 min.	.50
ERIE, PA.	12, 14, 23	Tel. 32-160	Airport Terminal	Port Erie	6 W.	Tri-Angle Cab.	25 min.	.75
FARGO, N. D.		Tel. 5161	% NWA—516 N. P. Avenue	Hector	2 NW	Erie Taxi Co.	30 min.	.75
FORT WORTH, TEXAS	10-13, 18, 21-24	Tel. 6-1183	Texas Hotel	Meacham Field	5 N.	Checker Cab Co.	10 min.	.50
HARTFORD, CONN.	1, 3, 5, 7, 10, 14	Tel. 7-5141	722 Main Street	Brainard Field	2 SE	Yellow Cab.	40 min.	.50
HOLLYWOOD, CALIF.	10-12, 21, 22	Tel. Stanley 7-1511	6735 Hollywood Blvd.	Union Terminal	7 NE	Taxi Service	15 min.	c .75
HOLYOKE, MASS.	1, 3, 5, 7, 10, 14	Tel. Westfield 2300	Airport Terminal	Barnes, Westfield	7 SW	Air Tr. Co.	35 min.	1.00
HOUSTON, TEXAS	13, 18, 22, 23	Tel. Capitol 5259	Airport Terminal	Municipal	10 SE		35 min.	b2.00
HUNTINGTON, W. VA.	6, 7	Tel. 5656	Texas State Hotel Lobby	Municipal	10 SE		40 min.	.75
INDIANAPOLIS, IND.	6-9	Tel. Belmont 3501	Airport Terminal	Chesapeake	3 W	Black & White Taxi Co.	25 min.	d .75
JOHNSON CITY, TENN.	10	Tel. Tri-City 7-4000	609 Merchants Bank Bldg.	Municipal	8½ SW	Wood Auto Livery	35 min.	.75
KINGSFORD, TENN.	10	Tel. Tri-City 7-4000	Airport Terminal	Tri-City	14 NW		45 min.	b2.00
KNOXVILLE, TENN.	10, 24	Tel. 2-2218	Airport Terminal	Tri-City	14 NE		45 min.	b2.00
LITTLE ROCK, ARK.	10, 12	Tel. 6822	Airport Terminal	Municipal	12 SW	Banker's Garage	45 min.	1.00
LONG BEACH, CALIF.		Tel. 6-2085	Airport Terminal	Municipal	1½ SW	Yellow Cab Co.	10 min.	.50
LOS ANGELES, CALIF.	10-12, 21, 22	Tel. 206 E. Ocean Blvd.	206 E. Ocean Blvd.	Municipal		Arnold Taxi	25 min.	.75
LOUISVILLE, KY.	12, 23	Tel. Stanley 7-1511	512 W. 6th Street	Union Terminal	14 NW	Airdrome Tr. Co.	45 min.	1.00
MEMPHIS, TENN.	10, 12, 18, 19, 23, 24	Tel. Highland 4600	319 W. Walnut Street	Bowman	6 SE	Yellow Cab Co.	30 min.	.75
MEXICO CITY, MEX.	13, 18, 22, 23	Tel. 3-2340	165 Union Avenue	Municipal	9 SE	Yellow Cab Co.	50 min.	.75
MILWAUKEE, WIS.	17	Tel. Erickson 282-06 or Mexico 6-2064	No. 27 Avenida Cinco de Mayo, Mexico, D. F.					
MINNEAPOLIS, MINN.	17	Tel. Marquette 3830	224 East Wisconsin Avenue	County	6 S.	Yellow Cab Co.	20 min.	.75
MONTREAL, QUE., CAN.	17, 20	Tel. Bridgeport 7708	723 Marquette Avenue	Municipal	7½ SE	Yellow Cab Co.	25 min.	.75
NASHVILLE, TENN.	8, 10, 12, 18, 19, 21, 23, 24	Tel. Plateau 2501	Hotel Mt. Royal					
NEW YORK, N. Y.	1-5, 7, 10-19, 23, 24	Tel. 5-7511	239 6th Ave. N.	Municipal	6 SE	Airport Tr. Co.	40 min.	.50
NEWARK, N. J.		Tel. Have. 6-5000	45 Vanderbilt Avenue	La Guardia Field	8 NE	Limousine Service	35 min.	e1.00
NORTHAMPTON, MASS.			Hotel New Yorker Lobby	La Guardia Field		Limousine Service	50 min.	e1.00
OAKLAND, CALIF.			Rockefeller Center, 18 W. 49th St.	La Guardia Field		Limousine Service	35 min.	e1.00
OKLAHOMA CITY, OKLA.	11, 13, 24		Robert Treat Hotel					
PEORIA, ILL.			Airport Terminal	Barnes, Westfield	16 N.		40 min.	b2.50
PHILADELPHIA, PA.	4, 5, 7, 10, 18, 19, 24		H. C. Capwell Travel Bureau	Municipal	9 S.	O. A. T. Co.	30 min.	1.00
PHOENIX, ARIZ.	10-12, 21, 22		Skirvin Hotel	Municipal	9 SW	Skirvin Cab Service	40 min.	.75
PITTSBURGH, PA.			Pere Marquette Hotel	Municipal	6 SW	Yellow Cab. Co.	25 min.	.50
PORTLAND, ORE.			1423 Walnut St.	Municipal	8	Yellow Cab. Co.	35 min.	.75
PROVIDENCE, R. I.	1, 3, 5, 7, 10, 14		18 East Adams St.	Sky Harbor	3½ E.	Taxi Service	15 min.	.50
RICHMOND, VA.			Airport Terminal	County Municipal	10½ SE.		45 min.	.75
ROCHESTER, MINN.	17		% NWA—614 S. W Broadway	Swan Island	4 NW	Red Top Taxi	30 min.	.50
ROCHESTER, N. Y.	2, 3, 14		Turks Head Bldg.	R. I. State	6½ S.	Limousine Service	30 min.	.50
ST. LOUIS, MO.	11, 13, 15		708 E. Grace Street	Byrd Field	7½ SE.	Yellow Cab	30 min.	1.00
SAN DIEGO, CALIF.	10, 22		% NWA—Kahler Hotel.	Municipal	1½ SE.	Yellow Cab Co.	10 min.	.55
SAN FRANCISCO, CALIF.	10-12, 21, 22		68 East Avenue	Municipal	5 SW	Limousine Service	35 min.	.60
SCRANTON, PA.			Jefferson Hotel	Lambert	15½ NW	Limousine Service	55 min.	1.00
SEATTLE, WASH.	17		J.K. Polk, Gen'l. Ag.137 Broadway	Lindberg	1½ NW		15 min.	.50
SOUTH BEND, IND.	2, 3		231 Montgomery Street	Municipal	13 SE	Airdrome Tr. Co.	45 min.	1.00
SPOKANE, WASH.	17		Wyoming Valley Airport	Wyoming Valley	17 W	Poston Cab Co.	60 min.	2.50
SPRINGFIELD, MASS.	1, 3, 5, 7, 10, 14		% NWA—406 Union Street.	Boeing Field	5½ SE.	Yellow Cab Co.	30 min.	.75
SYRACUSE, N. Y.	2, 3, 14		Airport Terminal	Bendix	3½ NW	Indiana Cab Co.	15 min.	.50
TUCSON, ARIZ.	10-12, 21, 22		% NWA—Davenport Hotel.	Felts Field	5 NE	Yellow Cab Co.	30 min.	.75
TULSA, OKLA.	11, 13		722 Main St., Hartford	Barnes, Westfield	11 W	Fedora Taxi Co.	40 min.	1.00
WASHINGTON, D. C.	4-7, 10, 18, 19, 24		Onondaga Hotel	Municipal	8 NW	Packard Taxi Service	30 min.	.75
WESTFIELD, MASS.	1, 3, 5, 7, 10, 14		72 North Stone Avenue	Tucson Airport	6 SE	Black & White Cab.	15 min.	f1.00
WILKES-BARRE, PA.	2, 3		507 South Boston Street	Municipal	6 NE	Cloverleaf Cab.	30 min.	.50
			Southern Ry. Bldg.	Washington	3 S.	Taxi	20 min.	.60
			Airport Terminal	Barnes Municipal	3 N		20 min.	.50
			Airport Terminal	Wyoming Valley	5 NE	Poston Cab Co.	20 min.	.75

GENERAL INFORMATION

ANIMALS—Pets will be accepted as excess baggage under certain conditions. Consult American Airlines agent.

BAGGAGE—Forty (40) pounds of baggage will be carried free on any ticket. The term "baggage" shall mean all luggage including briefcases, portfolios, parcels, sleeper envelopes, camera equipment and similar articles whether carried in the cabin or checked in cargo compartment. Excess baggage carried upon special arrangements and at the rate per pound of one-half of one per cent of the air passenger fare, with a minimum charge of twenty-five cents, and the liability of the Carrier for loss of or damage to baggage and/or personal property is limited to the amount of One Hundred Dollars (\$100.00) unless a higher valuation be declared and an additional charge paid therefor. Excess valuation limited to \$2500.00 on each full fare ticket.

From 44 to 55 pounds of baggage will be carried free on tickets of passengers destined to Mexico, Central and South America using Pan American Airways. Inquire of ticket agent for full details.

On tickets of transoceanic passengers 55 pounds of baggage will be carried free by plane, or 40 pounds will be carried by plane and 100 additional pounds transported by rail express at the Company's expense.

CHILDREN—Children two years of age and under twelve will be charged one-half the published one-way and round-trip fares over the lines of American Airlines. Children traveling at half fare will be entitled to adult baggage allowances and will be required to pay adult excess baggage and sleeper charges. A child under two years of age and carried in the arms of parent or guardian will be carried free.

EQUIPMENT—All American Airlines flights are operated with Douglas equipment. The following terms are employed to explain the type Douglas used: Flagships or Flagship Club Planes—Douglas DC-3, 21 passenger planes; Skysleepers or Flagship Skysleepers—Douglas DST, 14 passenger sleeper planes; Douglas—Douglas DC-2, 14 passenger planes.

FOUNTAIN PENS, LIQUIDS, ETC.—Due to changes in atmospheric pressure fountain pens and other liquid containers have a tendency to leak. Usually all that is necessary is to screw the caps on tightly. However, it is advisable to securely wrap pens and containers, in handbags and luggage, to insure against damage to other articles.

GENERAL—The use of alcoholic beverages is not permitted on planes.

GROUND TRANSPORTATION—American Airlines has arranged ground transportation services at reasonable rates in all cities it serves. See Page 11. Passengers using their own transportation direct to the airport are requested to report to the ticket agent at least ten (10) minutes before plane departure time.

INSURANCE—Trip insurance is available at all airline offices.

PASSAGE, CANCELLATION BY COMPANY—The Company reserves the right to cancel bookings before passage or enroute. Captain may remove passengers from plane at any point on the route for safety or other cause. In all events the passenger's sole recourse shall be recovery of that portion of the fare equal to the distance untraveled.

PASSAGE, CANCELLATION BY PASSENGER—The purchaser may receive a refund for passage if canceled two hours prior to flight.

REFUNDS—Requests for refunds should be addressed to General Auditor, American Airlines, Inc., N. Y. Municipal Airport, Jackson Heights, L. I., N. Y.

RESERVATIONS—All space is reserved, though no definite seat assignments are made. Reservations will not be held unless tickets are purchased in advance. The sale of any seat is necessarily subject to Company regulations for the control of space which in certain instances restrict the release of portions of through seats.

ROUND TRIP FARES—10% reduction on all round-trip tickets if purchased before start of original trip. Return trip must be started within 120 days.

STEWARDESSES—Stewardesses are aboard all American Airlines flights.

STOP-OVER—Stop-overs will be allowed at any regular stop, provided reservation is made accordingly.

TIME TABLES—These time-tables show the times at which planes may be expected to depart from and arrive at the several stations shown, and to connect with trains or other planes, but their departure, arrival, or connection at the time stated is not guaranteed. American Airlines reserves the right to vary from the time shown in this folder without notice to the public.

EXPLANATION OF REFERENCE MARKS

AM Times in Light Face.

AA—American Airlines.

BMA—Boston-Maine Airways.

BNF—Braniff Airways.

CAN—Canadian Colonial Airways.

CHI—Chicago & Southern Air Lines.

DAL—Delta Air Lines.

EAL—Eastern Air Lines.

PM Times in Dark Face.

NWA—Northwest Airlines.

PAA—Pan American Airways.

PCA—Pennsylvania-Central Airlines.

TCA—Trans. Canada Air Lines.

TWA—Transcontinental & Western Air.

UAL—United Air Lines.

WAE—Western Air Express

○—Advance reservations will be accepted only for transportation from Los Angeles or Tucson to New York.

■—Advance reservations will be accepted only for transportation from New York to Tucson or Los Angeles.

■—Connects with Boston-Maine and Central Vermont Airways.

■—Complimentary meal aloft after leaving station shown.

★—Flies over Niagara Falls.

◆—Sleeper charge between some points, see page 12.

▲—Special Limousine service between Windsor and Detroit.

†—On Sundays, depart 6:00 a.m.

†—Via connecting air line.

⊖—Via Flight 97.

⊖—On Sunday leave Boston 9:40 AM

†—Via CHI.

a—Daily.

b—Daily except Sunday.

c—Daily except Saturdays.

d—Via TWA.

e—Via EAL.

f—Flag stop.

k—Via Flight 77 connecting at Buffalo

o—Does not stop on Sundays and holidays.

p—Seattle-Vancouver via Trans-Canada Air Lines.

q—Via UAL connecting at Seattle.

v—On Sundays, use flight 7 departing Detroit 4:44 a.m.

x—Dallas stop serves both Dallas and Ft. Worth. American Airlines limousine service, available to or from downtown Ft. Worth or Meacham Field, Ft. Worth. Consult American Airlines agent for details.

y—Ft. Worth stop serves both Ft. Worth and Dallas. American Airlines limousine service from downtown Dallas or Love Field, Dallas. Dallas passengers from the West will be accommodated via connecting flight, when space is available, or via special limousine trip if space is not available.

SLEEPER CHARGES

WESTBOUND

FLIGHT 1

No Sleeper Charges

FLIGHT 3 and 33

NEW YORK to:—	
TUCSON	\$7.00
LOS ANGELES	8.00
NASHVILLE to:—	
TUCSON	5.00
LOS ANGELES	6.00
DALLAS-FT. WORTH to:—	
TUCSON	3.00
LOS ANGELES	4.00

FLIGHT 5

NEW YORK to:—	
EL PASO	\$6.00
TUCSON	7.00
PHOENIX	7.00
LOS ANGELES	8.00
WASHINGTON to:—	
EL PASO	6.00
TUCSON	7.00
PHOENIX	7.00
LOS ANGELES	8.00
NASHVILLE to:—	
EL PASO	4.00
TUCSON	5.00
PHOENIX	5.00
LOS ANGELES	6.00

MEMPHIS to:—	
EL PASO	4.00
TUCSON	5.00
PHOENIX	5.00
LOS ANGELES	6.00

DALLAS-FT. WORTH to:—	
TUCSON	3.00
PHOENIX	3.00
LOS ANGELES	4.00

FLIGHT 7

BOSTON to:—	
DALLAS-FT. WORTH	\$4.00
HARTFORD to:—	
DALLAS-FT. WORTH	4.00
NEW YORK to:—	
DALLAS-FT. WORTH	4.00
WASHINGTON to:—	
DALLAS-FT. WORTH	4.00

EASTBOUND

FLIGHT 2

FT. WORTH-DALLAS to:—	
NEW YORK	\$4.00
MEMPHIS to:—	
NEW YORK	3.00
NASHVILLE to:—	
NEW YORK	3.00
KNOXVILLE to:—	
NEW YORK	3.00

FLIGHT 4 and 44

LOS ANGELES to:—	
NASHVILLE	\$6.00
WASHINGTON	8.00
NEW YORK	8.00
TUCSON to:—	
NASHVILLE	5.00
WASHINGTON	7.00
NEW YORK	7.00
FT. WORTH-DALLAS to:—	
WASHINGTON	4.00
NEW YORK	4.00

FLIGHT 6

FT. WORTH-DALLAS to:—	
WASHINGTON	\$4.00
PHILADELPHIA	4.00
NEW YORK	4.00
MEMPHIS to:—	
WASHINGTON	3.00
PHILADELPHIA	3.00
NEW YORK	3.00

FLIGHT 8

LOS ANGELES to:—	
FT. WORTH-DALLAS	\$4.00
PHOENIX to:—	
FT. WORTH-DALLAS	3.00

NO REDUCTION FOR CHILDREN
OR ROUND TRIPS

EXAMPLES OF PASSENGER FARES

For fares not shown call any American Airlines office or your transportation agent.

—See Page 12, "Reservations"

One-way fares in light-face.
Round-trip fares in bold-face.

Passenger Fares Shown are
From Airport To Airport

Boston, Mass.	OW RT	24.42 43.94	51.42 92.54	49.00 88.20	35.17 63.30	42.05 75.68	37.67 67.80	94.55 170.18	52.50 94.50	156.42 281.54	54.95 98.90	74.05 133.28	11.95 21.50	11.95 21.50	87.92 158.24	148.57 267.42	63.37 114.06	156.42 281.54	145.05 261.08	82.32 148.16	24.15 43.40	
Buffalo, N. Y.	OW RT	24.42 43.94	27.00 48.60	24.80 44.64	10.75 19.35	17.84 32.12	13.25 23.84	72.85 131.12	28.29 50.92	132.00 237.60	30.75 55.35	54.43 97.96	29.00 52.20	32.30 32.30	17.95 32.30	63.50 114.30	124.15 223.46	38.95 70.10	132.00 237.60	120.70 217.26	57.90 104.22	29.85 53.72
Chicago, Ill.	OW RT	51.42 92.54	27.00 48.60	16.00 28.80	18.25 32.84	13.75 24.74	46.85 84.32	10.50 18.90	105.00 189.00	16.20 29.20	55.00 55.80	55.00 99.00	44.95 80.90	44.95 80.90	37.50 67.50	100.40 180.72	12.95 23.30	105.00 189.00	95.40 171.72	31.90 57.42	36.00 64.80	
Cincinnati, Ohio	OW RT	49.00 88.20	24.80 44.64	16.00 28.80	14.05 25.25	6.95 12.50	18.60 33.48	5.50 9.90	114.90 206.82	5.95 10.70	29.60 53.25	55.30 99.53	37.05 66.68	37.05 66.68	53.50 96.30	106.95 192.50	28.95 52.10	121.00 217.80	103.50 186.30	47.90 86.22	25.90 46.60	
Cleveland, Ohio	OW RT	35.17 63.30	10.75 19.35	18.25 32.84	14.05 25.25	7.10 12.75	64.40 115.92	17.55 31.58	123.25 221.84	20.70 36.00	43.70 78.65	44.95 80.91	26.70 48.06	26.70 48.06	55.20 99.36	113.40 204.12	30.50 54.90	123.25 221.84	109.95 197.90	49.45 89.00	
Dallas, Texas, or Ft. Worth, Texas	OW RT	94.55 170.18	72.85 131.12	46.85 84.32	52.10 93.78	64.40 115.92	57.30 103.14	60.10 108.18	2.50 4.50	57.35 103.22	73.50 132.30	51.10 91.95	27.40 49.30	100.85 181.53	82.60 148.68	82.60 148.68	10.95 19.70	33.90 61.02	92.45 166.40	50.40 90.72	14.95 26.90	70.45 126.80	
Detroit, Mich.	OW RT	37.67 67.80	13.25 23.84	13.75 24.74	18.60 33.48	12.48 22.47	60.10 108.18	23.75 42.74	118.75 213.74	24.06 43.31	44.23 79.60	41.75 75.14	31.20 56.16	31.20 56.16	50.75 91.34	113.65 204.56	26.20 47.16	118.75 213.74	108.65 195.56	45.15 81.26	40.55 72.98	
El Paso, Texas	OW RT	126.77 228.18	102.35 184.22	76.35 137.42	85.50 153.90	94.60 170.28	91.20 164.16	89.60 161.28	34.35 61.80	86.85 156.32	49.10 88.35	81.45 146.60	57.75 103.94	131.35 236.42	114.95 206.90	114.95 206.90	45.30 81.54	25.95 46.70	67.80 122.04	68.05 122.05	19.05 34.25	102.80 185.04	
Hartford, Conn.	OW RT	5.19 9.34	19.23 34.60	46.23 83.20	43.95 79.10	29.98 53.96	37.00 66.60	32.48 58.46	89.50 161.10	47.45 85.40	151.23 272.20	49.90 89.82	69.00 124.20	6.90 12.42	6.90 12.42	82.73 148.90	143.38 258.08	58.18 104.72	151.23 272.20	139.93 251.86	77.13 138.82	19.10 34.32
Los Angeles, Calif.	OW RT	156.42 281.54	132.00 237.60	105.00 189.00	114.90 206.82	123.25 221.84	119.85 215.72	118.75 213.74	73.50 132.30	109.40 196.92	112.00 201.60	98.10 176.58	160.00 288.00	149.95 269.90	149.95 269.90	148.95 269.90	23.15 41.65	96.45 173.60	30.05 54.05	88.45 159.20	139.75 251.54
Memphis, Tenn.	OW RT	74.05 133.28	54.43 97.96	55.00 99.00	29.60 53.25	43.70 78.65	36.55 65.78	74.23 131.12	27.40 49.30	31.00 55.80	98.10 176.58	23.65 42.55	80.35 144.60	62.10 111.74	62.10 111.74	18.25 32.85	18.25 32.85	92.50 166.50	155.40 279.72	67.95 122.30	160.00 288.00	86.90 156.42	30.45 54.75
Montreal, P. Q.	OW RT	29.00 52.20	55.00 99.00	55.30 99.53	44.95 80.91	48.35 87.03	41.75 75.14	100.85 181.53	58.80 105.83	160.00 288.00	61.25 110.25	80.35 144.60	18.25 32.85	18.25 32.85	92.50 166.50	155.40 279.72	67.95 122.30	160.00 288.00	150.40 270.72	86.90 156.42	30.45 54.75
Nashville, Tenn.	OW RT	60.90 109.62	41.26 74.27	26.40 47.50	16.45 29.60	30.50 54.90	23.40 42.10	33.90 61.02	40.55 73.00	21.60 38.85	109.30 196.92	10.50 18.90	13.20 23.75	67.20 120.95	48.95 88.10	48.95 88.10	95.85 172.52	120.50 216.90	88.95 160.10	36.75 66.15	
Newark, N. J.	OW RT	11.95 21.50	17.95 32.30	44.95 80.90	37.05 66.68	26.70 48.06	30.10 54.18	31.20 56.16	82.60 148.68	40.55 72.98	149.95 269.90	43.00 77.40	62.10 111.74	18.25 32.85	42.00 78.20	78.20 140.76	139.90 251.82	53.50 96.30	149.95 269.90	133.10 239.58	72.45 130.40	12.20 21.90
New York, N. Y.	OW RT	11.95 21.50	17.95 32.30	44.95 80.90	37.05 66.68	26.70 48.06	30.10 54.18	31.20 56.16	82.60 148.68	40.55 72.98	149.95 269.90	43.00 77.40	62.10 111.74	18.25 32.85	42.00 78.20	78.20 140.76	139.90 251.82	53.50 96.30	149.95 269.90	133.10 239.58	72.45 130.40	12.20 21.90	
Philadelphia, Pa.	OW RT	16.30 29.30	22.75 40.40	15.45 26.25	32.05 58.04	31.20 56.16	78.30 140.94	35.75 64.34	145.15 261.26	38.20 68.76	57.75 103.95	4.80 8.64	4.80 8.64	73.40 132.12	135.60 244.08	48.70 87.66	145.15 261.26	128.70 231.66	67.65 121.65	7.85 14.10
Phoenix, Ariz.	OW RT	148.57 267.42	124.15 223.46	100.40 180.72	106.95 192.50	113.40 204.12	110.40 198.72	113.65 204.56	57.30 103.14	110.90 199.62	23.15 41.65	103.95 187.10	82.70 148.86	155.40 279.72	139.90 251.82	139.90 251.82	68.25 122.84	91.20 164.16	42.10 75.75	6.90 12.40	72.25 130.04	127.75 229.94
Providence, R. I.	OW RT	2.75 4.94	22.33 40.18	49.33 88.78	47.00 84.60	33.08 59.54	40.05 72.08	35.58 64.04	92.55 166.58	50.50 90.90	154.33 277.78	52.95 95.30	72.05 129.68	9.95 17.90	9.95 17.90	85.83 154.48	146.48 263.66	61.28 110.30	154.33 277.78	143.03 257.44	80.23 144.40	22.15 39.85
Rochester, N. Y.	OW RT	21.18 38.12	3.24 5.82	30.24 54.42	28.04 50.46	13.99 25.18	21.08 37.94	16.49 29.68	76.09 136.96	31.53 56.74	135.24 243.42	33.99 61.18	57.97 104.34	16.95 30.50	16.95 30.50	66.74 120.12	127.39 229.30	42.19 75.94	135.24 243.42	123.94 223.08	61.14 110.04	29.15 52.46
St. Louis, Mo.	OW RT	63.37 114.06	38.95 70.10	32.95 23.30	28.95 52.10	30.50 54.90	31.85 57.32	26.20 47.16	33.90 61.02	23.45 42.20	96.45 173.60	67.95 122.30	53.50 96.30	53.50 96.30	24.70 44.46	91.20 164.16	105.00 189.00	84.30 151.74	18.95 34.10	43.70 78.66	
Syracuse, N. Y.	OW RT	16.93 30.46	7.49 13.48	34.49 62.08	32.29 58.12	18.24 32.82	25.33 45.58	20.74 37.32	80.34 144.60	35.78 64.40	139.49 251.08	38.24 68.82	61.92 111.44	14.53 26.14	14.53 26.14	70.99 127.78	131.64 236.94	46.44 83.58	139.49 251.08	128.19 230.74	65.39 117.70	26.73 48.10
Tucson, Ariz.	OW RT	145.05 261.08	120.70 217.26	95.40 171.72	103.50 186.30	109.95 197.90	106.95 192.50	108.65 195.56	50.40 90.72	105.90 190.62	30.05 54.05	101.40 182.52	75.80 136.44	150.40 270.72	133.10 239.58	133.10 239.58	61.35 110.42	6.90 12.40	84.30 151.74	49.00 88.15	65.35 117.62	120.85 217.52
Tulsa, Okla.	OW RT	82.32 148.16	57.90 104.22	31.90 57.42	47.90 86.22	49.45 89.00	45.15 81.26	14.95 26.90	42.40 76.32	88.45 159.20	86.90 156.42	72.45 130.40	72.45 130.40	6.50 11.70	12.20 130.04	18.95 34.10	104.50 188.10	65.35 117.62	62.65 112.76
Washington, D. C.	OW RT	24.15 43.40	29.85 53.72	36.00 64.80	25.90 46.60	22.50 40.50	70.45 126.80	30.75 55.35	139.75 251.54	31.85 57.30	49.90 89.80	30.45 54.75	12.20 21.90	12.20 21.90	68.40 123.92	127.75 229.94	43.70 78.66	139.75 251.54	120.85 217.52	62.65 112.76



OFF FOR THE SUN COUNTRY

VIA AMERICAN'S

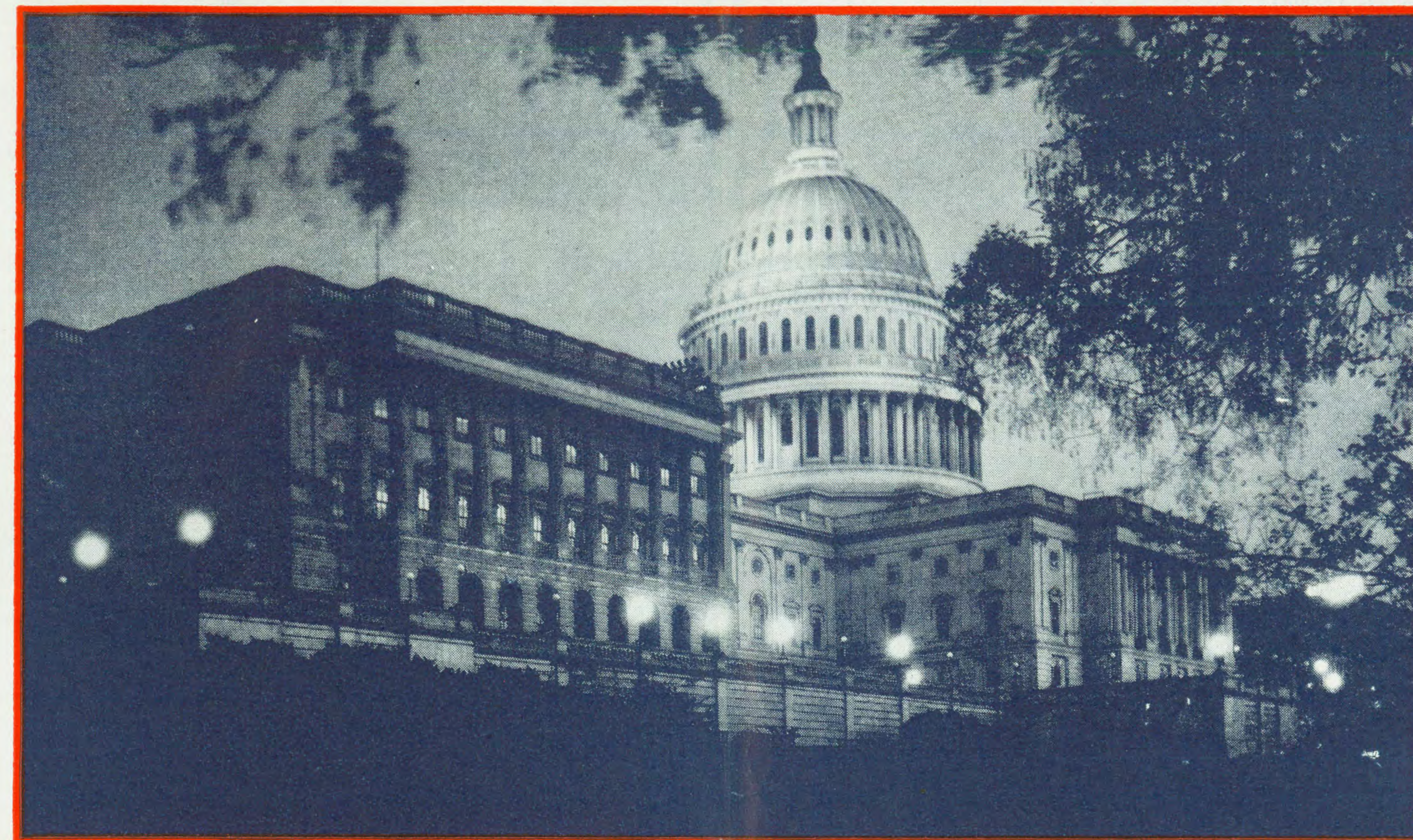
Southern Sunshine Route

TEXAS • ARIZONA • CALIFORNIA

Now! Two Sections of
THE American Mercury

Every day, each way, between
New York and Los Angeles

See pages 6 and 7 for American's
Five daily flights, each way, Coast to Coast



32 American Flagships daily
link WASHINGTON to the Nation

● To and from the most important city in America. 32 American Airlines Flagships daily carry the leaders of government and the military on their appointed tasks, as well as the civilians whose business of the moment is with the nation's capital. From every corner of the United States Washington is immediately accessible by air. The *principal* routes are American Flagship routes. Ever alert to the needs of this, our Capital, and to the requirements of its visitors, American places at their service the fastest and most comfortable mode of travel in the world!

Chicago and
the Northwest
Cincinnati and
Indianapolis
West Virginia
California,
Arizona and
the Southwest
Tennessee,
Arkansas, Texas



Boston
Providence
Hartford
New York
Philadelphia

AMERICAN AIRLINES *Inc.*

ROUTE OF THE FLAGSHIPS