

Effective Oct. 25, 1959

BONANZA

AIR LINES

INTRODUCING

JUDI B.

BONANZA'S

SYMBOL OF

SERVICE



**14 YEARS OF
SCHEDULED
SERVICE**

BONANZA

FLIES YOU TO THE RESORTS

Effective Oct. 25, 1959

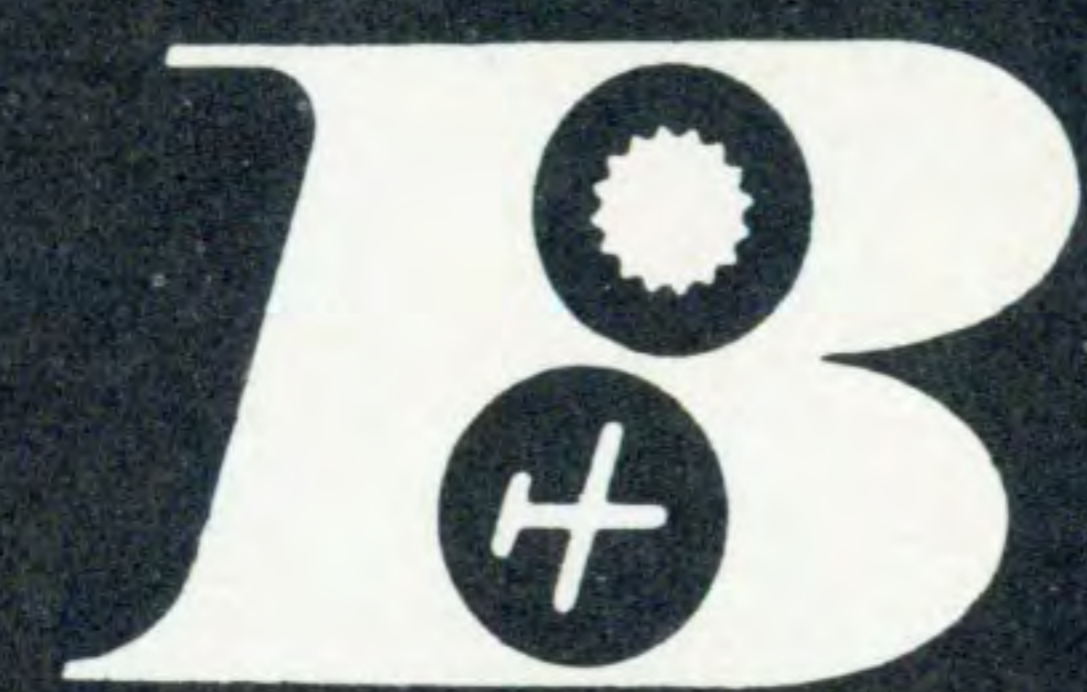
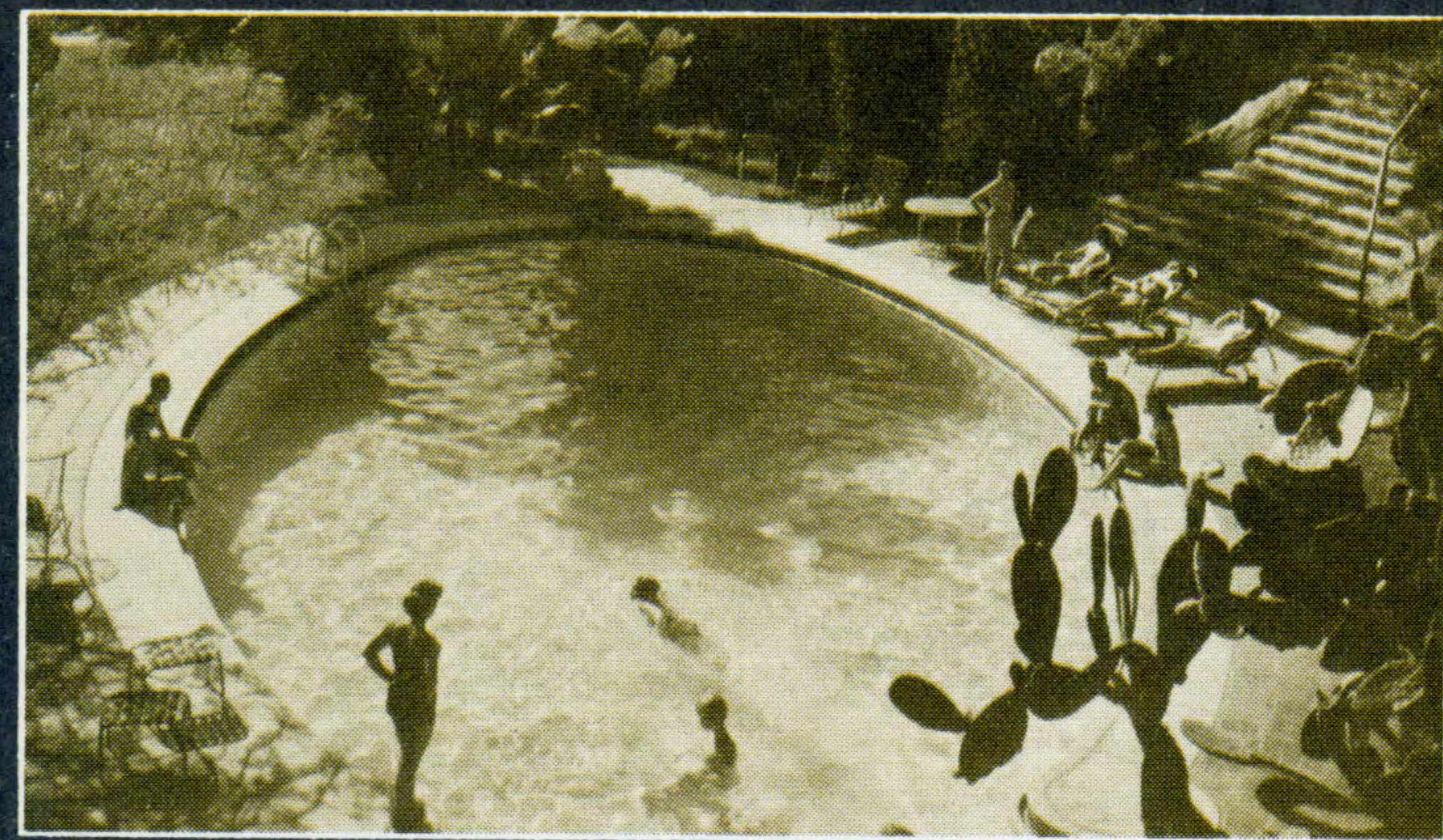
BONANZA AIR LINES

NOW... SILVER DART JET-PROP SERVING 12 CITIES

FAST - COMFORTABLE SILVER DART JET-PROPS NOW SERVING:

PHOENIX, PALM SPRINGS, SAN DIEGO, RIVERSIDE, LOS ANGELES, RENO, LAS VEGAS, SALT LAKE CITY, KINGMAN, YUMA, EL CENTRO, BLYTHE

INTRODUCING **JUDI B. BONANZA'S SYMBOL OF SERVICE**



NEW BONANZA SERVICE . . . SILVER DART TO PALM SPRINGS

Majestic sea-level desert resort in the shadows of scenic Mount San Jacinto . . . famous for championship golf courses . . . tennis . . . horseback riding . . . hunting . . . fishing . . . fine food . . . hotels . . . a wonderful wonderland full of warm welcome that starts when you land from your fast Silver Dart flight on Bonanza. Ask about Bonanza's All-Expense Vacation Plan — save more to enjoy yourself more.

Serving 27 resort cities in California, Arizona, Utah and Nevada



LEGEND
PRESENT SYSTEM
ROUTES APPLIED FOR



14 YEARS OF SCHEDULED SERVICE

BONANZA AIR LINES, INC. ONE WAY PASSENGER FARES

(All Fares Subject to 10% Federal Transportation Tax)

	Apple Valley	Blythe	Cedar City	El Centro	Flagstaff	Grand Canyon	Kanab	Kingman	Las Vegas	Los Angeles	Oceanside	Ontario	Page	Palm Springs Indio	Phoenix	Prescott	Provo	Reno	Riverside	St. George	Salt Lake City	San Diego	Santa Ana Laguna Beach	Tonopah
YUMA	\$25.95	\$24.10	\$32.90	\$ 5.80	\$22.50	\$22.55	\$30.20	\$24.20	\$30.10	\$19.00	14.50	22.80	\$29.60	\$27.70	\$12.80	\$17.65	\$45.65	\$50.10	\$22.80	\$30.50	\$46.90	\$11.85	\$15.85	\$41.45
TONOPAH	23.45	38.95	---	43.55	29.20	30.70	---	18.55	12.35	30.90	37.00	26.55	---	33.40	30.45	24.80	---	13.50	26.55	---	---	37.95	33.50	---
SANTA ANA - LAGUNA BEACH	11.10	18.40	40.95	11.05	30.10	30.60	37.30	28.40	22.20	5.20	4.80	8.00	36.70	12.90	24.00	25.70	53.70	35.30	8.00	37.55	56.35	7.60	---	---
SAN DIEGO	15.55	23.85	40.95	8.20	30.10	30.60	37.30	32.30	26.60	9.10	3.60	12.40	36.70	17.30	21.75	53.70	40.75	12.40	37.55	56.35	19.85	---	---	---
SALT LAKE CITY	---	46.45	16.40	50.55	31.00	28.15	23.60	---	---	56.35	56.35	37.55	37.55	51.65	35.15	31.65	3.60	---	---	---	---	---	---	---
ST GEORGE	---	29.90	4.40	33.95	12.10	9.35	4.80	---	---	37.55	37.55	8.50	35.10	18.75	12.85	17.20	---	---	---	---	---	---	---	---
RIVERSIDE	4.15	13.40	40.95	18.05	30.10	30.60	37.30	21.40	15.20	5.40	12.00	---	36.70	7.90	23.40	25.70	53.70	32.70	---	---	---	---	---	---
RENO	32.70	45.05	---	45.35	41.70	43.10	---	31.05	24.85	32.70	40.00	32.70	---	39.55	42.50	37.25	---	---	---	---	---	---	---	---
PROVO	---	46.00	13.80	50.05	28.30	25.50	21.00	---	---	53.70	53.50	53.70	24.90	51.20	34.95	29.00	---	---	---	---	---	---	---	---
PRESCOTT	24.55	18.05	16.25	22.10	5.40	5.90	12.60	7.60	13.45	25.70	25.70	25.70	25.70	25.70	12.00	23.25	6.70	---	---	---	---	---	---	---
PHOENIX	25.70	12.35	22.15	16.40	10.70	11.80	18.30	12.95	19.10	25.70	23.00	23.40	17.90	17.55	6.70	---	---	---	---	---	---	---	---	---
PALM SPRINGS - INDIO	11.00	7.80	38.45	22.90	27.70	28.10	34.90	28.25	22.10	10.30	15.20	7.90	34.30	---	---	---	---	---	---	---	---	---	---	---
PAGE	---	29.10	11.70	33.10	10.60	7.50	5.50	---	---	36.70	36.70	36.70	---	---	---	---	---	---	---	---	---	---	---	---
ONTARIO	4.15	13.40	40.95	18.05	30.10	30.60	37.30	21.40	15.20	5.40	12.00	---	---	---	---	---	---	---	---	---	---	---	---	---
OCEANSIDE	15.00	23.60	40.95	10.80	30.10	30.60	37.30	32.20	26.00	8.80	---	---	---	---	---	---	---	---	---	---	---	---	---	---
LOS ANGELES	8.50	15.80	40.95	15.20	30.10	30.60	37.30	25.70	19.60	---	---	---	---	---	---	---	---	---	---	---	---	---	---	---
LAS VEGAS	12.10	27.60	---	32.20	17.90	---	---	7.20	---	---	---	---	---	---	---	---	---	---	---	---	---	---	---	---
KINGMAN	18.30	24.25	---	28.30	12.00	13.50	---	---	---	---	---	---	---	---	---	---	---	---	---	---	---	---	---	---
KANAB	---	29.70	8.00	33.70	11.90	9.00	---	---	---	---	---	---	---	---	---	---	---	---	---	---	---	---	---	---
GRAND CANYON	30.45	22.90	12.70	26.95	4.20	---	---	---	---	---	---	---	---	---	---	---	---	---	---	---	---	---	---	---
FLAGSTAFF	29.00	22.60	15.50	26.50	---	---	---	---	---	---	---	---	---	---	---	---	---	---	---	---	---	---	---	---
EL CENTRO	21.15	27.75	37.55	---	---	---	---	---	---	---	---	---	---	---	---	---	---	---	---	---	---	---	---	---
CEDAR CITY	---	33.25	---	---	---	---	---	---	---	---	---	---	---	---	---	---	---	---	---	---	---	---	---	---
BLYTHE	16.50	---	---	---	---	---	---	---	---	---	---	---	---	---	---	---	---	---	---	---	---	---	---	---

***NEW SPECIAL FARE**

ROUND TRIP between LAS VEGAS and ONTARIO, RIVERSIDE \$19⁹⁰ (plus tax)

*(except Fridays, Sundays and Holidays)

SEC. 34.66, P.L. & R.
U.S. POSTAGE
PAID
LAS VEGAS, NEVADA
PERMIT NO. 39

Clarke

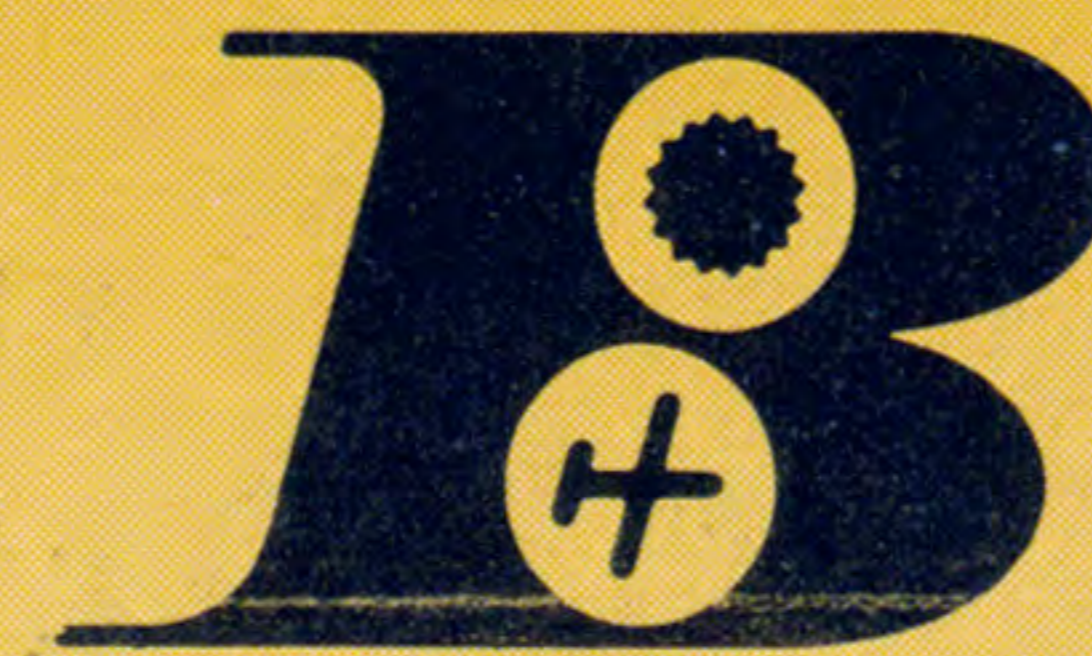
Effective Oct. 25, 1959

All schedule times shown in local time.

AA U

BONANZA AIR LINES

Silver Dart Jet-Props



SYSTEM SCHEDULE

Silver Dart Jet-Props

SILVER DART SERVICE
2 Two fast Silver Dart non-stops morning and evening with convenient connections at **RENO & LAS VEGAS**

SILVER DART SERVICE
5 Five roundtrips daily and frequent local service between **PHOENIX & LAS VEGAS**

SILVER DART SERVICE
3 Three daily flights including direct non-stop service between **SALT LAKE CITY & PHOENIX**

SILVER DART SERVICE
3 Three roundtrips daily connecting principal cities with **LOS ANGELES, SAN DIEGO & PHOENIX**

SILVER DART SERVICE
2 Two daily flights between America's top resort cities... **PHOENIX, PALM SPRINGS & LOS ANGELES**

SILVER DART SERVICE
2 Two flights every day featuring a new service between **LAS VEGAS, ONTARIO & LOS ANGELES**

* These flights will not operate on Nov. 26, 1959, Dec. 25, 1959, Jan. 1, 1960

Read Down SOUTH and WESTBOUND				Read Up NORTH and EASTBOUND								
SD 731a x	◇ 35b	SD 733	◇ 732a x	◇ 36b	SD 734							
9:40 SILVER DART 11:14	3:15 4:21 5:36	6:55 SILVER DART 8:30	8:59 SILVER DART 7:25	2:22 1:17 12:01	6:24 SILVER DART 4:50							
◇ 1	SD 703 x	SD 705 x	SD 707	SD 733	Read Down	Read Up	SD 702 x	SD 704	SD 734	◇ 6	SD 708	
6:30 SILVER DART 9:37	11:45 12:19 2:06	1:40 SILVER DART 3:50	3:45 SILVER DART 5:55	8:50 SILVER DART 11:00	Lv PST LAS VEGAS	Lv MST Kingman	Lv SILVER DART 9:00	9:21 9:50 9:00	1:10 SILVER DART 1:00	4:30 SILVER DART 4:20	8:25 8:43 7:59 7:15	10:40 SILVER DART 10:30
SD 761 x	◇ 65	SD 763	◇ *67	Read Down	Read Up	◇ *66	◇ 68	SD 762 x	SD 764			
10:10 SILVER DART 12:20	1:30 1:54 3:09 3:37 4:08 4:50	9:20 SILVER DART 11:30	SEE NOTES 4:45 5:35 6:37	Lv MST SALT LAKE CITY	Lv Provo	SEE NOTES 12:05 Ar 11:25 10:53 10:00	12:24 12:02 10:48 10:18 9:47 9:15	9:40 SILVER DART 7:30	8:40 SILVER DART 6:30			
SD 721 x	SD 723	◇ 25	Read Down	Read Up	◇ 22	SD 724 x	SD 726					
SILVER DART 7:40 8:32 8:07 8:42 9:12 9:30	SILVER DART 4:30 5:22 4:57 5:32 6:02 6:20	8:15 9:24 9:04 9:51 10:11 10:40 11:00	Lv MST PHOENIX	Lv MST Yuma	Lv PST El Centro	Lv SAN DIEGO	Lv Oceanside	Lv Santa Ana - Laguna Beach	Lv Ar PST LOS ANGELES	11:07 10:01 8:28 7:34 7:12 6:45 6:15	2:15 1:26 12:01 11:17 10:47 10:25	10:50 10:01 8:36 7:52 7:22 7:00
◇ 45 x	SD 747	Read Down	Read Up	◇ 46 x	SD 748							
7:30 7:34 8:29 9:04 9:30	SILVER DART 4:15 4:01 4:47 5:13 5:34	Lv MST PHOENIX	Lv PST Blythe	2:06 12:03 11:17 10:35 10:00	SILVER DART 9:49 8:04 7:29 6:55 6:30							
◇ 51 x	◇ 53	Read Down	Read Up	◇ 52 x	◇ 54							
7:00 8:13 8:43 9:13	3:30 4:43 5:08 5:35	Lv PST LAS VEGAS	Lv Apple Valley	1:15 12:10 11:35 11:00	8:25 7:20 6:50 6:15							

SD - F-27A "Silver Dart" equipment
 ◇ - DC-3 equipment
 All trips daily except as noted
 a - Operates daily, except Sunday
 b - Operates Mondays, Wednesdays and Fridays only
 * - Subject to C.A.B. approval
 † - No local passengers between Flagstaff and Phoenix
 PST - Pacific Standard Time
 MST - Mountain Standard Time
 AM - Light face
 PM - Bold face

RESERVATIONS AND INFORMATION

CITY TICKET OFFICES

Las Vegas, Nev.	Sahara Hotel Lobby	Overland 7-1818
Los Angeles, Cal.	9365 Wilshire Blvd. Beverly Hills	CRestview 5-4133 BRadshaw 2-9366
Phoenix, Ariz.	Adams Hotel Lobby	ALpine 8-8466
Reno, Nev.	Riverside Hotel Lobby	FAirview 9-0001
Salt Lake City, Utah	Hotel Utah Lobby	DAvis 8-8656

AIRPORT TICKET OFFICES

Apple Valley, Cal.	Apple Valley Airport	Apple Valley 7-7209
Blythe, Cal.	Municipal Airport	16F3
Cedar City, Utah	Municipal Airport	JUniper 6-9741
El Centro, Cal.	Imperial County Airport	ELgin 2-4218
Flagstaff, Ariz.	Municipal Airport	PROspect 4-7373
Grand Canyon, Ariz.	Valle Airport	Valle 3
Kanab, Utah	Municipal Airport	MIDway 4-5001
Kingman, Ariz.	Municipal Airport	SKYline 3-3630
Las Vegas, Nev.	McCarran Field	OVERland 7-1818
Los Angeles, Cal.	Los Angeles International Airport	CRestview 5-4133 BRadshaw 2-9366
Oceanside, Cal.	Palomar Airport	PARkway 9-2277
Ontario, Cal.	Ontario International Airport	YUKon 6-6724
Page, Ariz.	Glen Canyon Airport	MIDway 5-2404
Palm Springs, Cal.	Palm Springs Airport	FAirview 5-5053
Phoenix, Ariz.	Sky Harbor Airport	ALpine 8-8466
Prescott, Ariz.	Municipal Airport	HIckory 5-2812
Provo, Utah	Municipal Airport	FRanklin 3-7077
Reno, Nev.	Municipal Airport	FAirview 9-0001
Riverside, Cal.	Riverside Municipal Airport	OVERland 9-6221
St. George, Utah	Municipal Airport	ORchard 3-4142
Salt Lake City, Utah	Municipal Airport	DAvis 8-8656
San Diego, Cal.	Lindbergh Field	CYpress 6-6144
Santa Ana - Laguna Beach, Cal.	Orange County Airport	KIMberly 5-1146
Tonopah, Nev.	Municipal Airport	742
Victorville, Cal.	Apple Valley Airport	Apple Valley 7-7209
Yuma, Ariz.	Yuma County Airport	SUNset 2-1871

Reservations — Reservations must be made in advance and are tentative until tickets are purchased. Bonanza Air Lines reserves the right to cancel the reservation of any passenger who fails to present himself at the Bonanza Air Lines Airport ticket office at least 10 minutes before scheduled departure of flight on which his reservation was made.

Re-confirmation — All stopover or return passengers must re-confirm their reservations at least six hours prior to flight time. Contact nearest Bonanza office.

Schedules — Schedules show the time at which planes may be expected to arrive at or depart from stations, and to connect with other planes, but Bonanza Air Lines will not be responsible for consequences arising from delays or from errors in the printed schedule. Times shown are subject to change without notice.

Baggage — 40 pounds of personal baggage will be carried free on one ticket. Baggage in excess of 40 pounds may be carried at established excess baggage rates.

Children's Fares — One child under two years of age, not occupying a seat, will be carried free with each accompanying passenger 12 years of age or older. Children two years of age and under 12 years of age will be charged one-half of applicable one-way adult fare, or \$3.60, whichever is greater.