

EFFECTIVE AUGUST 1, 1966

# BONANZA AIR LINES

**NOW! MORE FUNJET FLIGHTS**

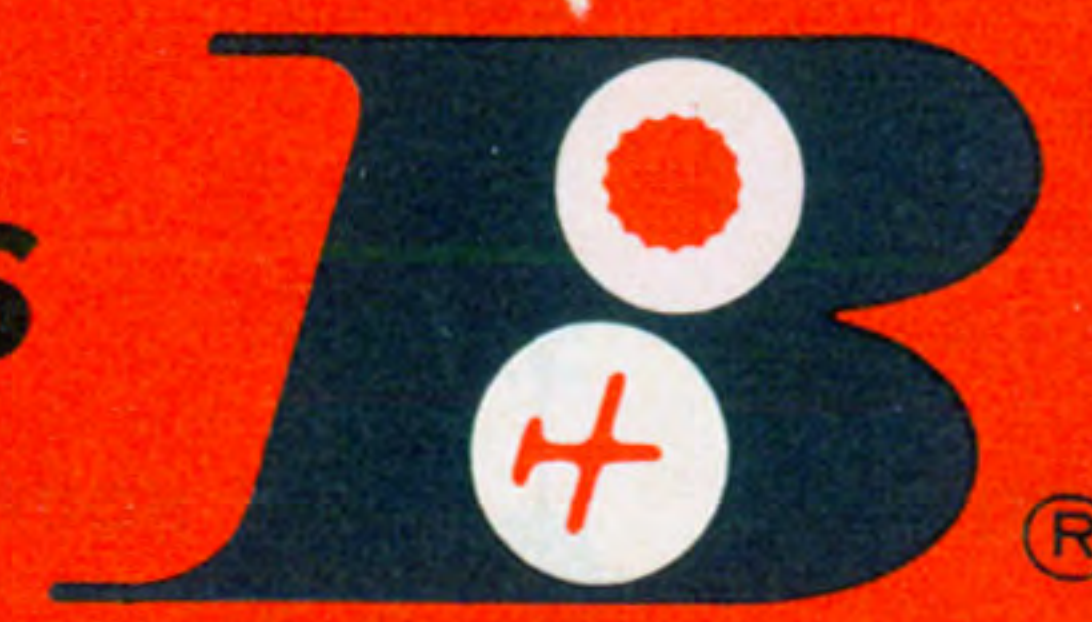
NEW ADDED DC-9 JET SERVICE TO  
LOS ANGELES • LAS VEGAS • RENO • PHOENIX • SALT LAKE CITY



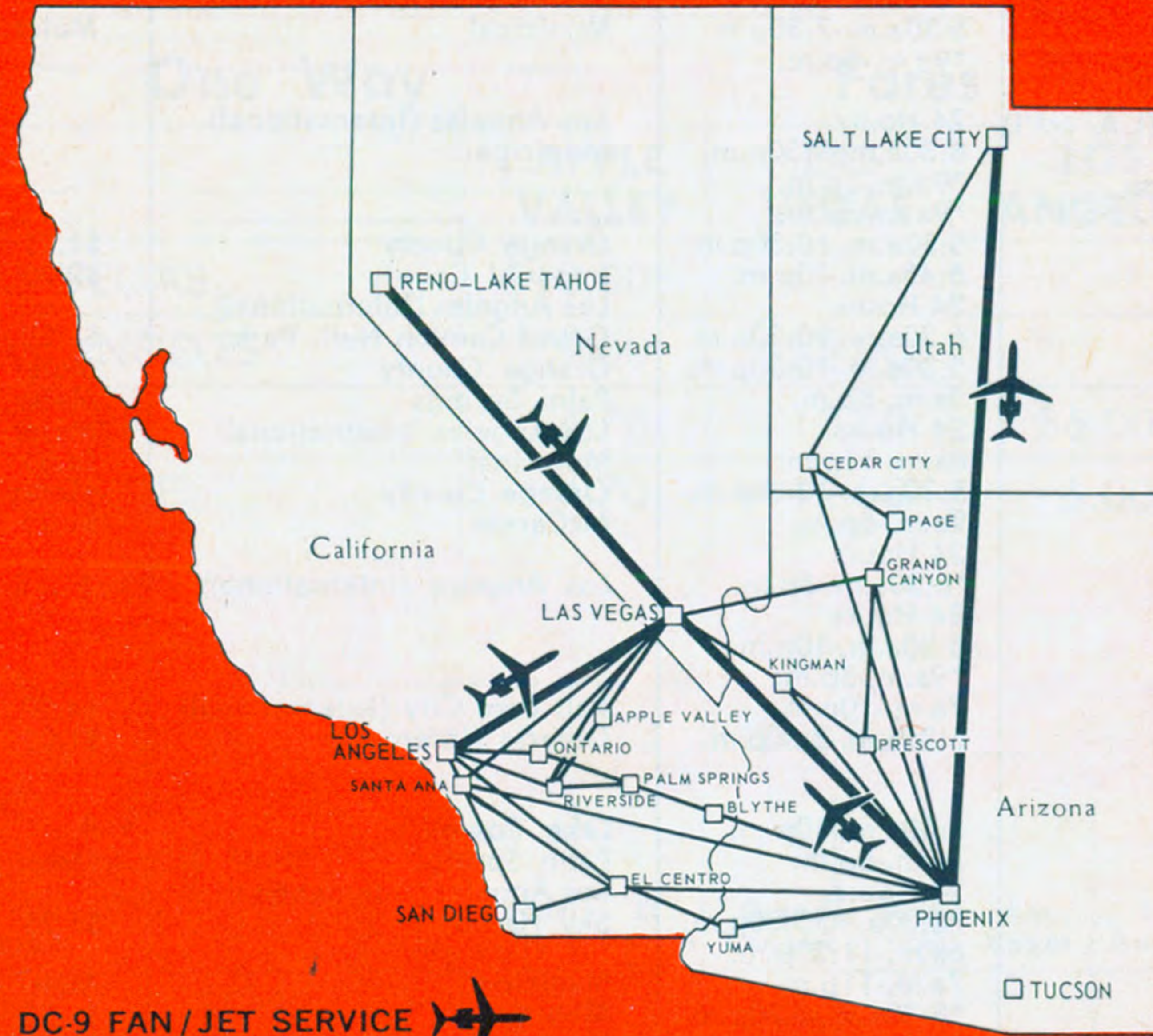
EFFECTIVE AUGUST 1, 1966

**BONANZA . . . Leaders in the Low Fare Game**

**BONANZA AIR LINES**  
SYSTEM ROUTE MAP



# BONANZA AIR LINES



**NOW! MORE FUNJET FLIGHTS**  
NEW ADDED DC-9 JET SERVICE TO  
LOS ANGELES • LAS VEGAS • RENO • PHOENIX • SALT LAKE CITY



We don't like to blow our own horn too much but, after all, we were first with many special low fares which are today being used in some form by many other airlines.



**\$** Take our Youth Fare for example. Introduced by Bonanza in 1961, this fare has since been copied, with variations, by almost all domestic airlines. Bonanza's Youth Fare enables anyone between the ages of 12 and 22 with a youth identification card (purchased on a yearly basis for just \$2.00) to make firm, positive reservations and fly on Bonanza's system at a savings of approximately 40%. The "No Standby" feature has made Bonanza's Youth Fare very popular.

**\$** Probably Bonanza's single greatest contribution to promotion of tourism and air travel was the "BonanzaLand Area Fare". This plan, introduced by Bonanza in 1961, was the forerunner of the "Visit U.S.A." fare now offered by U. S. airlines to foreign visitors. The BonanzaLand fare provides persons from outside Bonanza's territory a 15- or 30-day "pass" to unlimited air travel anywhere on Bonanza's system for a flat \$90.00 or \$160.00 ticket. This innovation in air fares won Bonanza the Presidential "E" award for promoting tourism in the U. S.

**\$** The Clergy Fare, offered first by Bonanza in 1957, allows all members of the clergy to fly Bonanza's system for Half Fare. This fare is on a space available basis at point of origination. A clergy identification card (purchased yearly for \$5.00) is required.

**\$** Bonanza also provides a system-wide Family Plan Fare. It is good between all pairs of cities on Bonanza's system and works like this . . . one parent pays full fare, all other immediate family members fly for half fare (one child under 2 flies free). Of course, the Family Plan allows firm, positive reservations; however, travel is restricted to certain days of the week.

**\$** Bonanza's Round Trip Discount fares save passengers up to 26% from regular fares. This program, started by Bonanza in 1961 between many of its cities, was quickly adopted system-wide, and is now available between most pairs of points on Bonanza's system and can be used any day. Passengers using this Round Trip Discount must return within 7 days.

**\$** Budget-Aire and Jet-Commuter fares to Las Vegas from Los Angeles — a flat \$13.00 plus tax, one way — good on all flights. This special fare represents up to 40% savings from existing first class and coach fares in the market. Bonanza was first in lowering the fare to Las Vegas in an effort to promote tourism and air travel in the Southwest.

**\$** Realizing that Group Fares were attractive to many new customers, Bonanza offered a Group Fare Plan in 1962. You save 30% to 38% from regular first class fares on flights between most cities on Bonanza's system. Any group qualifies — even groups as small as 5 people! And, if you are the organizer of a group of 15 or more and purchase the tickets for them, you go FREE. This fare is on round trip and tickets must be purchased at least 48 hours before departure.

**\$** And, on Bonanza, it costs you no more to ride one of our new DC-9 Funjets than it does to fly on the popular F-27 jet-props. Why? Because we're one airline who feels you shouldn't have to pay more to get the very best in air travel.



RENO - LAS VEGAS - LOS ANGELES

Table with columns for flight numbers (401, 447, 451, 405, 601, 311, 441, 131, 407, 411, 433, 443, 417, 603, 315, 445, 419, 453, 137, 135), services, frequencies, and equipment. Includes flight details for Reno, Las Vegas, and Los Angeles.

SALT LAKE CITY - RENO - LAS VEGAS - PHOENIX

Table with columns for flight numbers (111, 101, 501, 131, 103, 511, 433, 105, 107, 115, 137, 135, 515, 503), services, frequencies, and equipment. Includes flight details for Salt Lake City, Reno, Las Vegas, and Phoenix.

PHOENIX - SAN DIEGO - LOS ANGELES

Table with columns for flight numbers (447, 451, 311, 221, 441, 223, 225, 443, 247, 315, 445, 227, 453, 229), services, frequencies, and equipment. Includes flight details for Phoenix, San Diego, and Los Angeles.

LEGEND
MST - Mountain Standard Time
PDT - Pacific Daylight Saving Time
AM - Light Face
PM - Bold Face
All flights operate daily except as otherwise indicated.

REFERENCE MARKS
A - Propeller First Class
Y - Jet Coach
K - Jet Commuter
# - Y Service Las Vegas-Reno
C - Budget Aire
F-27A - Fairchild F-27A Jet-Prop Equipment
DC-9 - Douglas DC-9 Fan-Jet Equipment
+ Service Temporarily Suspended



LOS ANGELES - LAS VEGAS - RENO

Table with columns for flight numbers (432, 432, 440, 312, 404, 602, 134, 450, 408, 410, 442, 414, 138, 136, 452, 416, 604, 314, 444, 418, 446), services, frequencies, and equipment. Includes flight details for Los Angeles, Las Vegas, and Reno.

PHOENIX - LAS VEGAS - RENO - SALT LAKE CITY

Table with columns for flight numbers (100, 502, 432, 510, 112, 134, 104, 514, 116, 138, 136, 108, 504, 118), services, frequencies, and equipment. Includes flight details for Phoenix, Las Vegas, Reno, and Salt Lake City.

LOS ANGELES - SAN DIEGO - PHOENIX

Table with columns for flight numbers (222, 440, 220, 312, 450, 224, 442, 226, 246, 452, 314, 228, 444, 446), services, frequencies, and equipment. Includes flight details for Los Angeles, San Diego, and Phoenix.

LEGEND
MST - Mountain Standard Time
PDT - Pacific Daylight Saving Time
AM - Light Face
PM - Bold Face
All flights operate daily except as otherwise indicated.

REFERENCE MARKS
A - Propeller First Class
Y - Jet Coach
K - Jet Commuter
# - Y Service Las Vegas-Reno
C - Budget Aire
F-27A - Fairchild F-27A Jet-Prop Equipment
DC-9 - Douglas DC-9 Fan-Jet Equipment
+ Service Temporarily Suspended



HOW TO USE THE QUICK REFERENCE SCHEDULE

- 1. Find your departure city which is listed alphabetically and shown in the colored block.
2. Find your destination city listed alphabetically under your departure city. The applicable fare is shown following the destination city.
3. You will find on one line from left to right departure time, arrival time, flight number, stops, equipment and operating exceptions.

Table with columns: Leave, Arrive, Flight Service, Equip-ment, Stops, Remarks. Includes routes from Blythe, Cedar City, El Centro, Las Vegas, Phoenix, Prescott, Reno, Riverside, Santa Ana, Salt Lake City, and Yuma.

Package Vacation Tours
LAS VEGAS • GRAND CANYON
PHOENIX • RENO-LAKE TAHOE
SAN DIEGO • DISNEYLAND
PALM SPRINGS • YUMA
— Call Bonanza or your travel agent

Table with columns: Leave, Arrive, Flight Service, Equip-ment, Stops, Remarks. Includes routes to Phoenix, Palm Springs, Reno, Riverside, Santa Ana, Salt Lake City, and Yuma.

Table with columns: Leave, Arrive, Flight Service, Equip-ment, Stops, Remarks. Includes routes from Palm Springs, Los Angeles, Phoenix, Blythe, Cedar City, El Centro, Kingman, Las Vegas, Ontario, Page, and Reno.

Table with columns: Leave, Arrive, Flight Service, Equip-ment, Stops, Remarks. Includes routes from Riverside, Santa Ana, Salt Lake City, Cedar City, Grand Canyon, Phoenix, Page, San Diego, and Yuma.

LEGEND
MST — Mountain Standard Time
PDT — Pacific Daylight Saving Time
AM — Light Face
PM — Bold Face
All flights operate daily except as otherwise indicated.

REFERENCE MARKS
A — Propeller First Class
Y — Jet Coach
K — Jet Commuter
C — Budget Aire
F-27A — Fairchild F-27A Jet-Prop Equipment
DC-9 — Douglas DC-9 Fan-Jet Equipment

LEGEND
MST — Mountain Standard Time
PDT — Pacific Daylight Saving Time
AM — Light Face
PM — Bold Face
All flights operate daily except as otherwise indicated.

REFERENCE MARKS
A — Propeller First Class
Y — Jet Coach
K — Jet Commuter
C — Budget Aire
F-27A — Fairchild F-27A Jet-Prop Equipment
DC-9 — Douglas DC-9 Fan-Jet Equipment



DC-9  
**JET COMMUTER  
FARE**

**BETWEEN  
LOS ANGELES and LAS VEGAS**

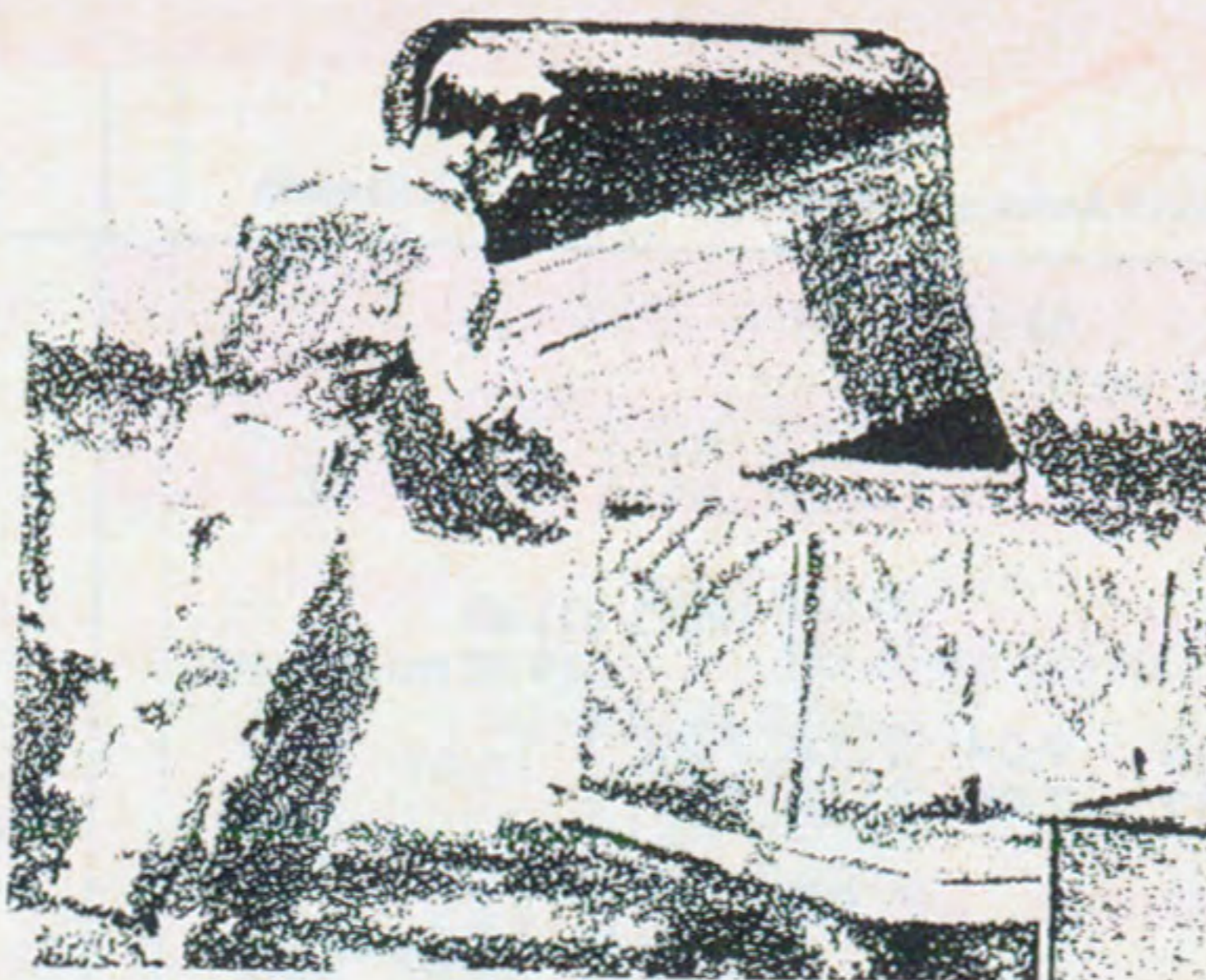
**\$13** Plus Tax

**One Way Budget-Aire Fares**

	† APPLE VALLEY	LAS VEGAS	LOS ANGELES
LAS VEGAS .....	\$10.00		
LOS ANGELES .....	9.00	\$13.00	
ONTARIO .....	4.70	12.00	\$6.00
RIVERSIDE .....	4.70	12.00	6.00

**NOW** GIVE YOUR  
CARGO

**A BIG LIFT  
on Bonanza  
DC-9 FanJets**



With the introduction of DC-9 fan jets in the West, Bonanza now offers a *big lift* to your cargo shipments. This big, burley jet has far more cargo capacity than any aircraft its size. Now Bonanza flies your cargo *faster*, more frequently, and at the *lowest* cargo rates! Call your agent, forwarder or Bonanza cargo specialist for the best service in the West.

**ONE WAY FARES AND SPECIAL ROUND TRIP EXCURSION FARES**

No Additional Charge when transportation is via flights operated with jet aircraft.

And Between	† Apple Valley	Blythe	Cedar City	El Centro	Grand Canyon	Kingman	Las Vegas	Los Angeles	Ontario	Page	Palm Springs	Phoenix	Prescott	Reno	Riverside	Salt Lake City	San Diego	Santa Ana	Yuma
Blythe	\$17.95																		
Cedar City		\$36.00										\$22.00							
El Centro	22.70	29.45	\$41.00									38.00				\$29.00			
Grand Canyon	25.00	25.00	14.00	\$30.00								29.00							
Kingman	20.00	27.00		31.00	\$15.00											50.00			
Las Vegas	14.00	30.00	26.00	35.00	12.50	\$ 9.00													
Los Angeles	9.75	17.20	44.00	16.60	30.00	28.00	21.75										\$46.00	\$29.00	\$53.00
Ontario	5.30	14.75	44.00	19.55	28.00	24.00	17.00	\$ 6.55											34.00
Page		32.00	13.00	36.00	9.00		20.00	40.00	\$40.00										
Palm Springs	12.30	9.00	42.00	24.50	31.00	31.00	24.00	11.60	9.10	\$37.00									
Phoenix	28.00	14.00	24.00	18.00	13.00	15.00	21.00	28.00	26.00	20.00	20.00	13.00		74.00	\$42.00	56.00	38.00	42.00	24.00
Prescott	27.00	20.00	18.00	24.00	7.00	9.00	15.00	28.00	28.00	14.00	26.00	8.00				54.00			
Reno	36.00	49.00		49.00	39.00	34.00	27.00	36.00	36.00		43.00	46.00	40.00						
Riverside	5.30	14.75	44.00	19.55	28.00	24.00	17.00	6.55											
Salt Lake City		50.00	18.00	54.00	31.00		41.00	61.00	61.00	30.00	56.00	38.00	34.00		61.00				
San Diego	16.95	25.45	44.00	9.45	33.00	32.00	29.00	9.00	13.75	40.00	18.75	24.00	28.00	44.00	13.75	60.00			22.00
Santa Ana	12.40	19.90	44.00	12.35	30.00	26.00	18.00	6.35	5.00	40.00	14.25	26.00	28.00	38.00	9.20	61.00	8.80		29.00
Yuma	28.00	27.00	36.00	7.00	25.00	27.00	33.00	21.00	25.00	32.00	30.00	15.00	20.00	54.00	25.00	51.00	14.00	18.00	

NOTES: All Fares Subject to 5% Federal Tax.  
Round Trip Excursion Fares — 7 Day Return Limit.  
† Service Temporarily Suspended

**CREDIT INFORMATION**

You may charge your travel on Bonanza with any of these Credit Credentials —

- UNIVERSAL AIR TRAVEL PLAN
- HILTON CARTE BLANCHE
- AMERICAN EXPRESS
- VALLEY NATIONAL BANK CARD
- BANKAMERICARD
- DINERS' CLUB
- BONANZA CREDIT CARD

**RESERVATION PHONE NUMBERS**

TICKET OFFICE LOCATIONS • GROUND SERVICES

CITY	TELEPHONE	PHONE HOURS	TICKET OFFICE	OFFICE HOURS	AIRPORT	LIMO/CAB RATE
† Apple Valley, Calif. Anaheim, Calif. Beverly Hills, Calif. Blythe, Calif. Boston, Mass.	638-2220 781-8662 948-6171 267-1145	24 hours 24 Hours 5:30a.m.-7:30p.m. *9a.m.-5p.m.	Airport Terminal 521 W. 6th St. Airport Terminal 535 Boylston St. (Chase Building)	5:30a.m.-10:30p.m. *8:30a.m.-5p.m. 5:30a.m.-7:30p.m. *9a.m.-5p.m.	Orange County Los Angeles (International) Municipal	\$1.25 \$1.15 Meter
Burbank, Calif. Cedar City, Utah Chicago, Ill. Dallas, Tex. Disneyland, Calif. El Centro, Calif. Glendale, Calif. Grand Canyon, Ariz. Huntington Beach, Calif. Indio, Calif. Inglewood, Calif. Kingman, Ariz. Laguna Beach, Calif. Las Vegas, Nevada	781-8662 586-6544 263-7769 RI 1-5118 638-2220 352-4218 246-7465 638-2329 Zenith 7-0477 Zenith 7-0547 670-3951 SK 3-3630 Zenith 7-0477 736-2955 736-2704(F) 776-4300 670-3951 646-3056(F) PL 2-5663 Zenith 961 986-6724 339-2955 984-3381(F) 645-2404 327-1471 246-7465 273-9111 273-9201(F) 445-2812 329-0001 684-6221 688-6220(F) 328-8656 296-6144 296-0333(F) YU 6-2858 638-2220 545-5815(F) 781-8662 501-5843 624-7427 782-1871	24 Hours 8:30a.m.-9:30p.m. *9a.m.-5p.m. *9a.m.-5p.m. 24 Hours 6:45a.m.-10p.m. 24 Hours 6:30a.m.-10:30p.m. 24 Hours 5a.m.-8p.m. 24 Hours 6a.m.-11p.m. 24 Hours 5:30a.m.-10:00p.m.	Airport Terminal (L.A. Int'l) Airport Terminal 55 East Washington 211 North Ervay Airport Terminal Airport Terminal Airport Terminal Airport Terminal Airport Terminal Airport Terminal Airport Terminal Airport Terminal Sahara Hotel Airport Terminal 521 West 6th St. Airport Terminal 5700 Avion Drive 501 Madison Ave. Airport Terminal Airport Terminal	24 Hours 8:30a.m.-9:30p.m. *9a.m.-5p.m. *9a.m.-5p.m. 5:30a.m.-10:30p.m. 6:45a.m.-10p.m. 24 Hours 6:30a.m.-10:30p.m. 5a.m.-8p.m. 24 Hours 6a.m.-11p.m. 5:30a.m.-10:30p.m. 9a.m.-6p.m. 24 Hours *8:30a.m.-5p.m. 24 Hours 5:30a.m.-10p.m. *9a.m.-5p.m. 7a.m.-10p.m. 6:30a.m.-8:30p.m.	Los Angeles (International) Municipal Los Angeles (International) Municipal Orange County Imperial County Los Angeles (International) Grand Canyon Natl. Park Orange County Palm Springs Los Angeles (International) Municipal Orange County McCarran Los Angeles (International) Salt Lake City (International) Ontario (International)	\$1.25 \$2.00 \$1.25 Meter Meter Meter Meter \$4.00 Meter \$1.25 \$1.25 \$1.15 \$1.00
Los Angeles, Calif.	776-4300 670-3951 646-3056(F) PL 2-5663 Zenith 961 986-6724 339-2955 984-3381(F) 645-2404 327-1471 246-7465 273-9111 273-9201(F) 445-2812 329-0001 684-6221 688-6220(F) 328-8656 296-6144 296-0333(F) YU 6-2858 638-2220 545-5815(F) 781-8662 501-5843 624-7427 782-1871	24 Hours 24 Hours 5:30a.m.-10p.m. *9a.m.-5p.m. *9a.m.-5p.m. 5:30a.m.-10:00p.m.	Airport Terminal Airport Terminal Airport Terminal Adams Hotel	6:30a.m.-10p.m. 5a.m.-8p.m. 24 Hours 24 Hours 6a.m.-11:30p.m. 7a.m.-11p.m. *8:30a.m.-5:30p.m. 5a.m.-10p.m.	Lake Powell Palm Springs Los Angeles (International) Sky Harbor	Meter \$1.25
Prescott, Ariz. Reno, Nevada Riverside, Calif.	445-2812 329-0001 684-6221 688-6220(F)	24 Hours 7a.m.-9:30p.m. 5:30a.m.-10:00p.m.	Airport Terminal 120 Mill St. Airport Terminal	7a.m.-11p.m. *8:30a.m.-5:30p.m. 5a.m.-10p.m.	Municipal Municipal Municipal	Meter \$.75 \$.50
Salt Lake City, Utah San Diego, Calif.	328-8656 296-6144 296-0333(F)	7a.m.-10p.m. 24 Hours	Hotel Utah Airport Terminal	*8:30a.m.-5:30p.m. 6:30a.m.-10p.m.	Salt Lake City (International) San Diego (International)	\$1.25 \$1.50
San Francisco, Calif. Santa Ana, Calif.	YU 6-2858 638-2220 545-5815(F)	*9a.m.-5p.m. 24 Hours	291 Geary St. Airport Terminal	*9a.m.-5p.m. 5:30a.m.-10:30p.m.	Orange County	\$.50
Santa Monica, Calif. Tokyo, Japan Tucson, Ariz. Yuma, Ariz.	781-8662 501-5843 624-7427 782-1871	24 Hours *9a.m.-5p.m. 24 Hours 7a.m.-12p.m.	Airport Terminal Room 150, Imperial Hotel Airport Terminal	24 Hours *9a.m.-5p.m. 7a.m.-12p.m.	Los Angeles (International) Yuma International	Meter \$2.70
† Service Temporarily Suspended	(F)-Air Cargo Service	*Except Sat. & Sun.		*Except Sat. & Sun.		

**GENERAL PASSENGER INFORMATION**

**RESERVATIONS** — Reservations must be made in advance and are tentative until tickets are purchased. Bonanza reserves the right to cancel the reservation of any passenger who fails to present himself at the Bonanza Airport Ticket Office at least 10 minutes prior to scheduled departure of flight on which his reservation was made.

**TICKETS** — Tickets for transportation at normal all-year fares are valid for a period of 12 months after date of issuance. Stopovers are permitted at intermediate points. At most cities a ticket pickup time will be established at the time reservations are made, and the tickets must be picked up by this time in order to retain the reservation.

**CHECK-IN FOR FLIGHTS** — It is requested that passengers check-in at airport ticket counters AT LEAST 20 minutes before scheduled departure time. Passengers checking-in less than 10 minutes before scheduled departure may be refused passage if boarding them will delay the flight.

**CHILDREN** — One child under two, not occupying a seat, will be carried free with each accompanying passenger 12 years of age or older. Children two years of age and under 12 will be charged one-half the applicable one-way adult fare, or \$4.70, whichever is greater.

**BAGGAGE** — Free Allowance — When fare is \$40 or less:  
One or more pieces the total outside dimensions of which do not exceed 62 cumulative inches and carry-on luggage the total outside dimensions of which do not exceed 40 inches.  
When fare is more than \$40:  
In addition to above, one additional piece the total outside dimensions of which do not exceed 55 inches.

Baggage in excess of free allowance will be charged for at published tariff rates.

Liability — Unless extra value is declared and charges paid before departure, liability is limited as follows:  
Domestic or within U.S.: \$250 or the actual value thereof, whichever is less.  
International: \$7.48 per pound or the actual value thereof, whichever is less.

**SCHEDULES** — Schedules show the time at which flights may be expected to arrive or depart, but Bonanza will not be responsible for consequences arising from delays or from errors in the printed schedule. Times shown are subject to change without notice.

**YOUTH FARES** — Youth Identification Cards (valid for one year at \$2.00 per card) permit persons 12 through 21 years of age to purchase tickets at approximately 40% off adult fare between most cities. Consult your Bonanza representative for details.

**FAMILY PLAN** — Accompanying family members may travel at 50% of adult first class or jet coach fare except on Friday and from Noon through Midnight on Sunday.

**CLERGY FARES** — Reduced fares are available to members of the Clergy upon presentation of a Bonanza Air Lines Clergy Identification Card. For further details contact your Bonanza representative.

**IN FLIGHT SERVICE** — Cocktails available for sale on most flights.