

BRAUNIFF.

THE *B* LINE

Airways



—FASTER
—SAFER
—More Comfortable
—and, Rates now
compare favorably with other
transportation
methods. . . .

WORLD'S FASTEST
AIRLINE

SCHEDULES
EFFECTIVE ON AND AFTER MARCH 10, 1931

SOUTH

READ DOWN

NORTH

READ UP

Light figures indicate a.m. time—Bold figures indicate p.m. time.

Lv. Chicago		8:45			Ar. Chicago		5:00		
Ar. Kansas City		11:45			Lv. Kansas City		2:45		
Lv. Kansas City		12:00			Ar. Kansas City		2:30		
Ar. Tulsa		1:45			Lv. Tulsa		1:00		
Lv. Tulsa	8:00	1:50	4:00	5:45	Ar. Tulsa	8:45	12:45	5:30	6:15
Ar. Oklahoma City	8:45	2:35	4:15	6:30	Lv. Oklahoma City	8:00	12:00	4:45	5:30
Lv. Oklahoma City	9:00	2:45			Ar. Oklahoma City		11:30	4:30	
Ar. Wichita Falls	9:45	3:30			Lv. Wichita Falls		10:45	3:45	

RATES

	CHICAGO	KANSAS CITY	TULSA	OKLAHOMA CITY	OMAHA	ST. LOUIS
KANSAS CITY	25.00					
DENVER	60.00	35.00				
TULSA	37.50	12.50				
OKLAHOMA CITY	44.50	19.50	7.00			
WICHITA FALLS	51.50	26.50	14.00	7.00	38.50	41.50
FORT WORTH	54.50	29.50	17.00		41.50	44.50
DALLAS	54.50	29.50	17.00		41.50	44.50
HOUSTON	70.50	45.50	33.00		57.50	60.50

Connections

Chicago-Denver
Lv. Chicago 8:45 a.m. Arrive Denver 4:10 p.m.
Connecting at Kansas City with U. S. Airways.
Lv. Denver 7:50 a.m. Arrive Chicago 5:00 p.m.

Chicago-Fort Worth-Dallas-Houston
Lv. Chicago 8:45 a.m. Arrive Dallas 3:40 p.m., Fort Worth 4:00 p.m., Houston 5:30 p.m.
Connecting at Tulsa with Bowen Airlines.

Lv. Houston 9:00 a.m., Fort Worth 10:30 a.m., Dallas 10:50 a.m. Arrive Chicago 5:00 p.m.
Overnight train connections to and from New Orleans, San Antonio, Brownsville.

Wichita Falls-Omaha-St. Louis
Lv. Wichita Falls 11:15 a.m. Arrive Omaha 4:40 p.m. Arrive St. Louis 5:15 p.m.
Connecting at Kansas City with Rapid Air Transport.

General Information

A bus fare of 50c is charged for transportation to and from the airports served in all cities except Chicago, where the charge is 75c.

For reservations and information call the leading hotels and travel bureaus in the cities served, or the following Braniff Airways Traffic Representatives.

Chicago—430 South Michigan Avenue, Auditorium Hotel Lobby, Telephone Harrison 4550.

Kansas City—Airways Ticket Office, 1104 Baltimore, Telephone Grand 1330.

Tulsa—Braniff Airways, Telephone 6-3513.

Oklahoma City—Braniff Airways, Telephone 3-8700.

Wichita Falls—J. Glenn Groves, Telephone 2-5222.

Fort Worth-Dallas-Houston—Call Bowen Airlines Representative for information.



BRANIFF.
THE B LINE
Airways



—FASTER
—SAFER
—More Comfortable
—and, Rates now compare favorably with other transportation methods. . . .



WORLDS FASTEST AIRLINE

BRANIFF Airways



• PAUL R. BRANIFF •

—organized and operated the first passenger airline in the Southwest. This line was later sold to Universal Aviation Corporation and was operated under the name of Braniff Air Lines. When the Safeway System was purchased by the Aviation Corporation, Braniff Air Lines were discontinued and the new Braniff Airways started. Now, age 33, Paul Braniff has been flying since 1926, and has a total flying time of more than 2,400 hours. His transport license is No. 690.

BRANIFF AIRWAYS is the outgrowth of more than 12,000,000 passenger miles of operating experience, during which time no passenger has ever suffered the slightest injury. Originally starting as Paul R. Braniff, Incorporated, June, 1928, the first passenger air line in the Southwest was inaugurated. This company operated three round trips daily between Tulsa and Oklahoma City, and by April, 1929, a merger was formed with one of the larger aviation corporations and the Braniff Air Lines was formed to take over the holdings and operations of the Paul R. Braniff Company. By the summer of 1929 more than 4,000 miles were being flown daily and, by the fall of 1929, a total of 12,000,000 passenger miles of air line operation had been flown without the slightest accident.



• MAURICE MARKS •

THE present Company, Braniff Airways, was organized in the fall of 1930, starting out with what we believe is the latest and most efficient equipment obtainable. Thousands of hours of practical flying experience and operation in the section which we serve is the background behind our new line.

—has been flying continuously since 1926, and was associated with the Braniff Aviation Companies in 1928 and 1929, later joining Safeway. He has to his credit a total of more than 3,300 hours in the air in the operation of both single and multi-motored equipment. His transport license is No. 2695.



These PILOTS

Have Flown 17,400 hours in SAFETY



• CHESTER BAILES •

—flying experience goes back to 1925. Bailes was associated with the Braniff Air Lines in 1928-29, later joining Safeway as a pilot. He is licensed to fly all types of single motor cabin ships and has to his credit more than 2,500 hours in the air. His transport license is No. 2927.



• FRANK HOVER •

—age 29 years, has been flying continuously since 1923. His experience covers all types of ships. He was associated with the original Braniff Air Lines, later joining Safeway as a pilot flying tri-motored Fords. He later flew both Lockheed and Ford ships for the Continental Oil Company. Pilot Hover has had more than 3,000 hours in the air. His transport license is No. 1153.



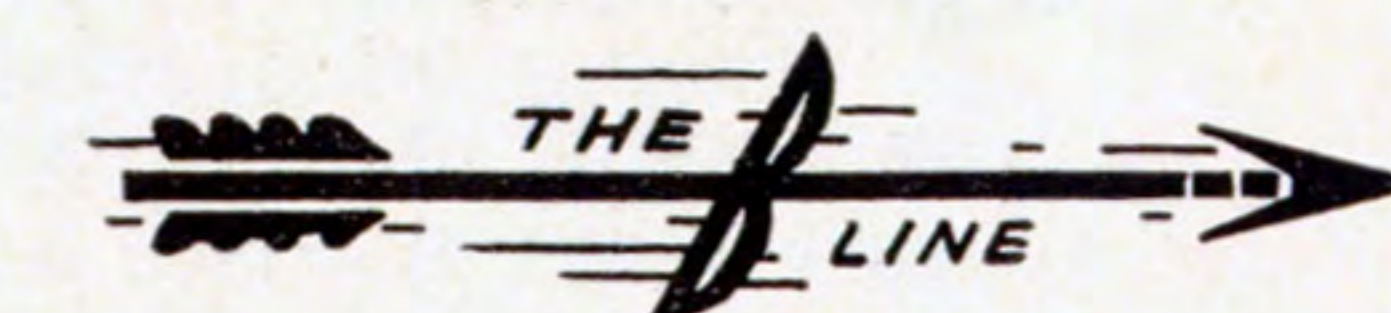
• WYLE V. MOORE •

—has been flying since 1918. He was an instructor in the Army Air Service from 1919 to 1922. He then did general barnstorming in the United States and old Mexico. For the last two years, he has been flying privately owned ships. He has a total of more than 3,700 hours flying time to his credit. He is 33 years old and his transport license is No. 7311.



• RAY SHRADER •

—has been flying since 1918. He graduated at Kelly Field, Texas, as a pilot in the United States Army. After the Armistice Shrader was very active as a pilot in the Colorado National Guard. In 1927 he joined the Alexander Aircraft Company at Colorado Springs as a factory pilot. While there he flew on demonstration trips and general sales work in all parts of the United States. In 1929 he joined the Continental Oil Company as flying salesman in charge of aviation sales. Later, he joined Safeway as a pilot. Shrader has more than 2,500 hours in all types of aircraft to his credit. His transport license is No. 826.

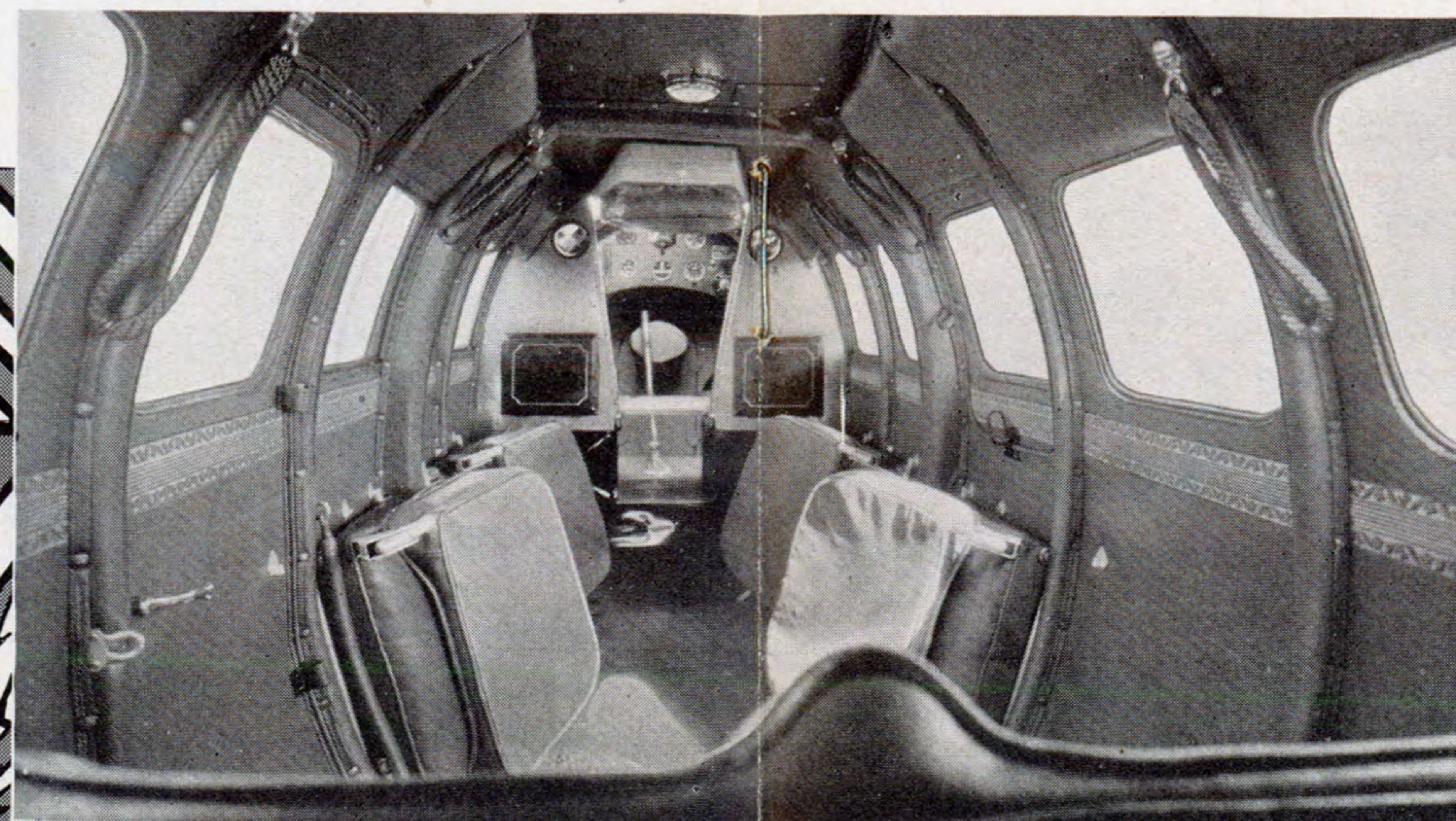


• TAKE



AIR PASSENGERS will find our new Lockheed ships, used exclusively by Braniff Airways, the most comfortable planes now in service. The cushions are deep and restful, and the ships are more roomy than most others. Air sickness is practically unknown, due to the elimination of noise and vibration. While traveling in the Braniff Airways' BEE-LINE ships you do not experience any sense of speed, although our ships are the fastest built. With the motor throttled back to cruising speed, it is only turning over at approximately the same number of revolutions per minute as your automobile motor at 35 miles per hour, yet the ship is actually flying 150 miles per hour. When speed is imperative, the ship can be speeded up safely to 180 miles per hour.

THE BRANIFF BEE-LINE ships have as low landing speed as any other cabin ships of similar type, and much slower than most of the multi-motored ships. This adds to the safety of flying, for our ships can land in more restricted space than the ordinary air-line transports. Our ships are probably the most maneuverable and easiest to fly of any now in service. They are automatically stable and when levelled off in normal flight will fly themselves, without any attention from the pilot. Passengers will note with pleasure the smooth, even flight of our ships. Conversation is easily possible. Smoking is not permitted, not that there is the slightest danger of fire, but because it is sometimes offensive to the other passengers.



• LUXURIOUS INTERIOR - BRANIFF SHIPS •

• BRANIFF Airways •



• OKLAHOMA CITY FROM THE AIR •

OKLAHOMA CITY, the headquarters of the Braniff Airways, is singularly favored in that it has become a very important point in air-line transportation, there now being 30 arrivals and departures of regular scheduled airline ships daily. A large number of private owners also operate from the two airports.



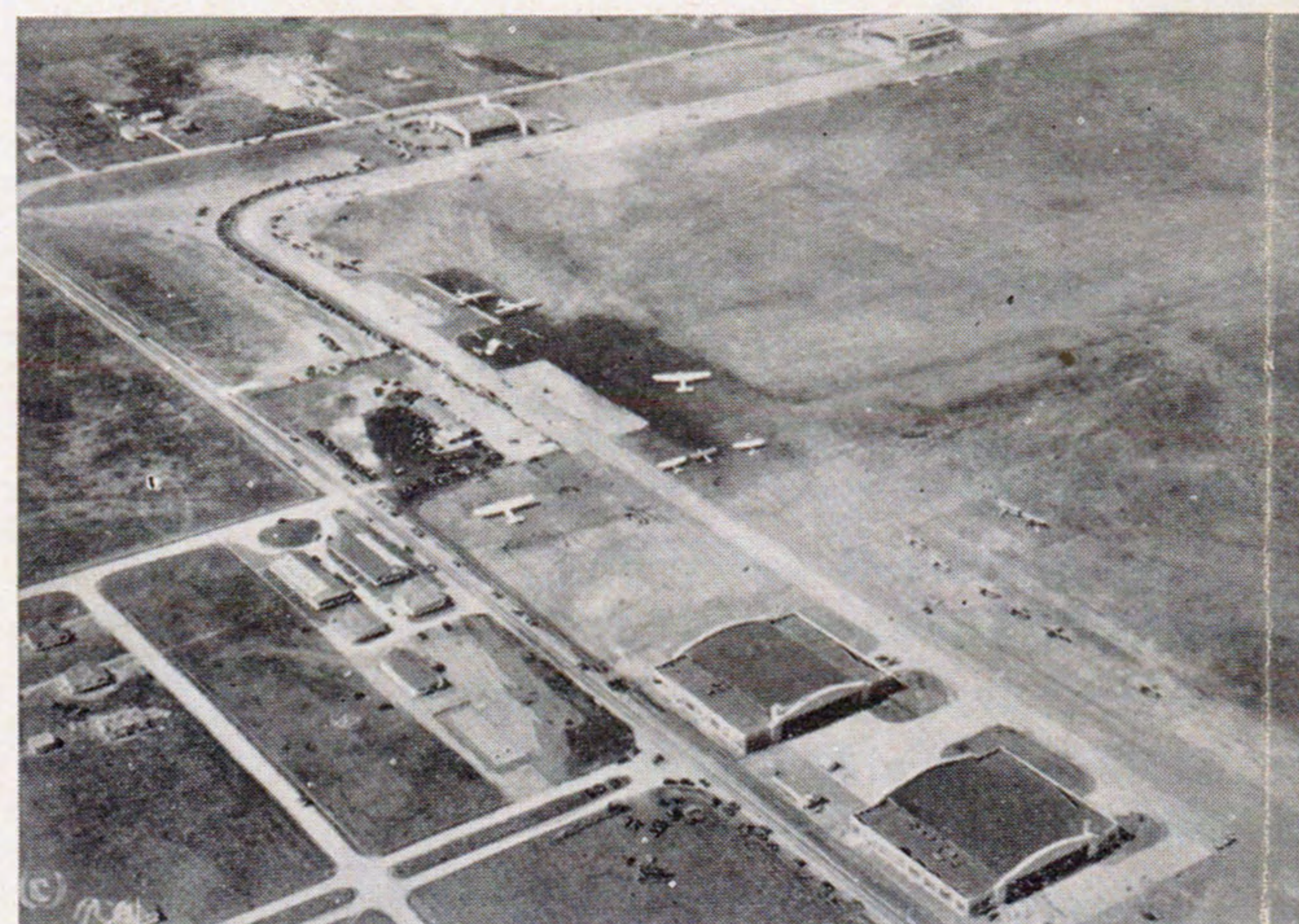
• WICHITA FALLS FROM THE AIR •



• VIEW OF TULSA FROM THE AIR •

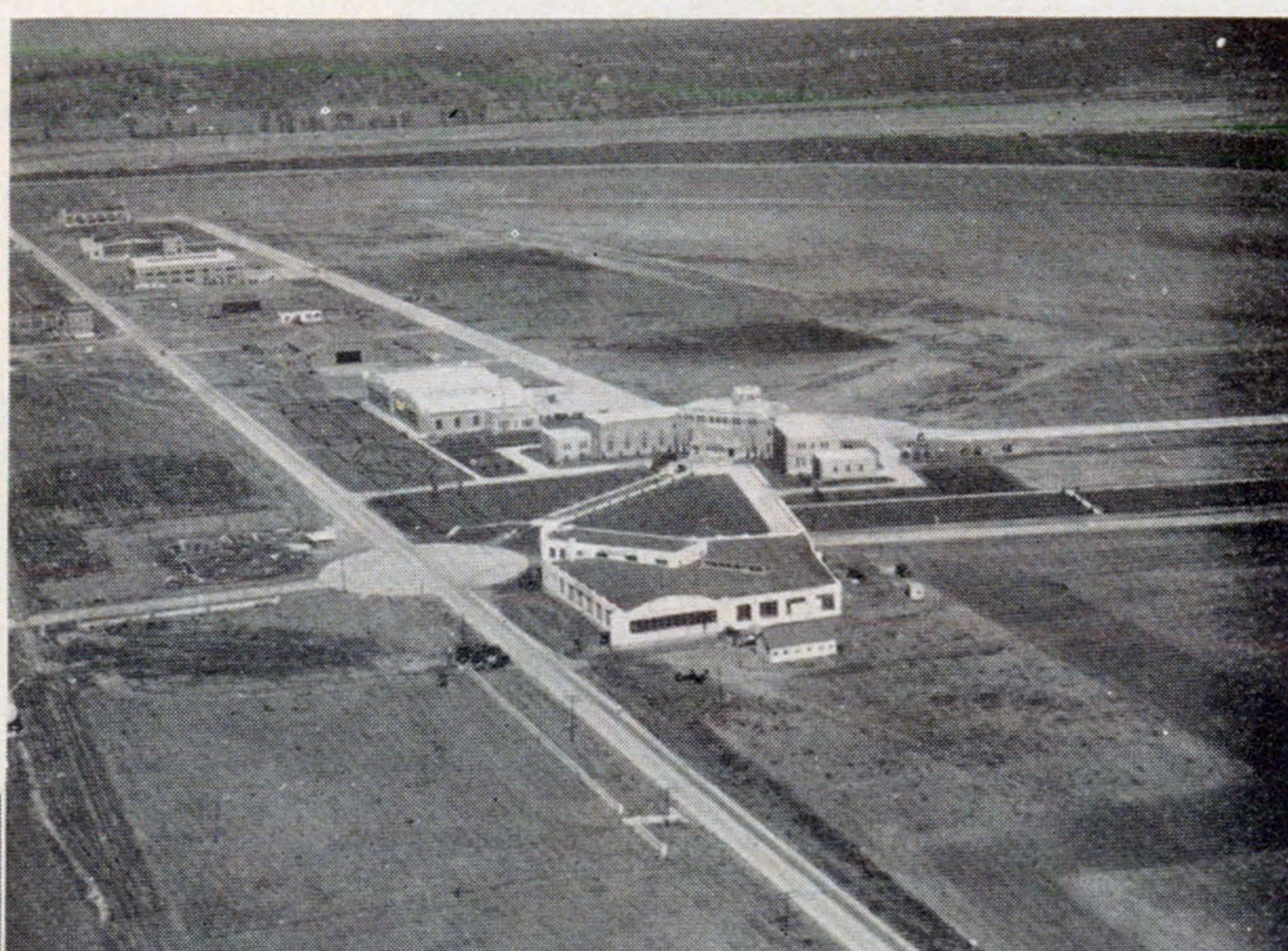
TULSA is another very important point in the Southwest reached by the Braniff BEE-LINE Airways. Tulsa is known as the oil capital of the world. Tulsa from the air offers probably the most striking view of any city served.

• TAKE  THE BEE LINE •



• TULSA AIRPORT - TULSA, OKLAHOMA •

AIR TERMINALS



• FAIRFAX AIRPORT - KANSAS CITY •



• LOBBY •
FAIRFAX AIRPORT

THIS air terminal has been made famous by the fact that there are 32 arrivals and departures of regularly operated air line planes every day. Tulsa has led the world month after month in number of passengers handled at the Municipal Airport. During the month of June, 1929, more than 11,000 passengers arrived and departed.

THE Fairfax Airport in Kansas City, Kansas, is famous as having the most beautiful airport buildings in the United States. This is a very popular airport and is used extensively by people in the Southwest and those engaged in transcontinental travel. BEE-LINE passengers will be delighted with the food and service at the Fairfax terminal restaurant.

SAFETY Assured

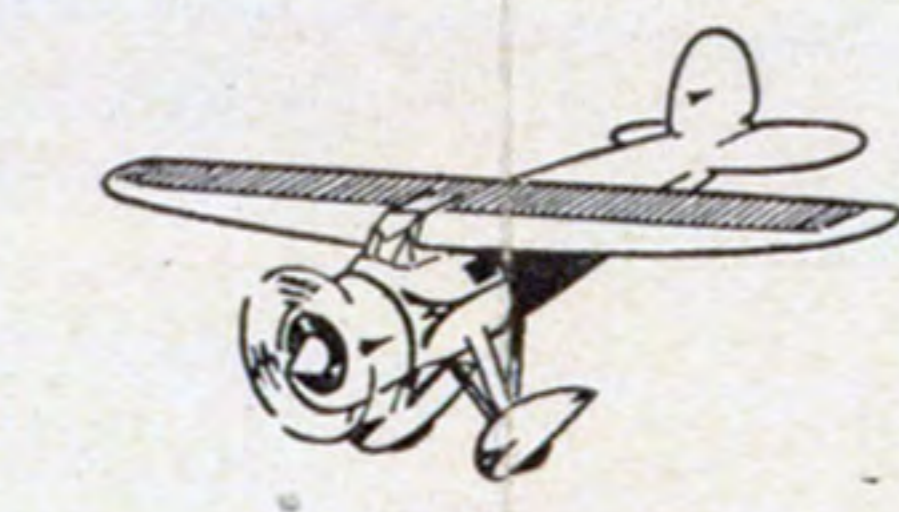
by way of 

DURING the first half of 1930, there was 1 (one) fatality to every 1,400,000 miles flown on passenger air lines the nation over. In May, 1930, the United States Government inaugurated new and drastic rules controlling passenger air lines. It is now compulsory that every air line must obtain a letter of authority from the Government permitting it to carry passengers, and in this letter of authority a number of new and important safety rules are incorporated.

DURING the last half of 1930, after the new Department of Commerce regulations governing air passenger lines were in effect, the safety factor in air transportation rose from 1 (one) fatality in every 1,400,000 miles flown to 1 (one) fatality in every 10,000,000 miles flown. Thus, the safety factor has increased more than 750% in six months. The safety of air transportation is now constantly being improved. When you fly with the Braniff BEE-LINE you are safe-guarded by the following rules of the Department of Commerce of the United States.



1. Every pilot must be licensed by the Government and have a thorough physical examination every six months.
2. Each ship must be analyzed for stress by the Government.
3. Every ship must be inspected daily by a licensed mechanic.
4. Motors are not allowed to run to the point where they are in need of overhauling.
5. Before any trip is started weather data must be gathered showing the wind velocity and directions at all altitudes.
6. The amount of visibility, temperature and moisture in the air at both point of departure and point of destination must be known and given to the pilot.
7. No trip can be undertaken unless there is a minimum of 500 feet of ceiling at points of departure and destination.
8. Transport ships must carry a reserve of 1/3 the gasoline and oil capacity of the ship. This assures an ample supply for the specified trip and a wide margin for safety.
9. Weather information is gathered at terminal points by radio and, before departing on a trip, the pilot is given this information and signs a clearance report to our field operations manager at point of departure.



PILOTS of Braniff BEE-LINE Airways have 17,400 flying hours to their credit, and they are selected not only for their ability to pilot an airplane but also for their ability to inspire confidence in our passengers and for their innate courtesy with people in their care. Every pilot and mechanic in our organization is a U. S. Government licensed man.