

# BRANIFF



*Airways*

GREAT LAKES TO THE GULF •

EXPRESS • PASSENGERS •

• MAIL •



EFFECTIVE JUNE 1, 1937

TWO MOTORS TWO WAY RADIO  
TWO PILOTS TWO RUDDERS  
*for Smoother Flying*

# BRANIFF

THE B LINE  
*Airways*

# BRANIFF

THE B LINE  
*Airways*

GREAT LAKES TO THE GULF.

EXPRESS • PASSENGERS.

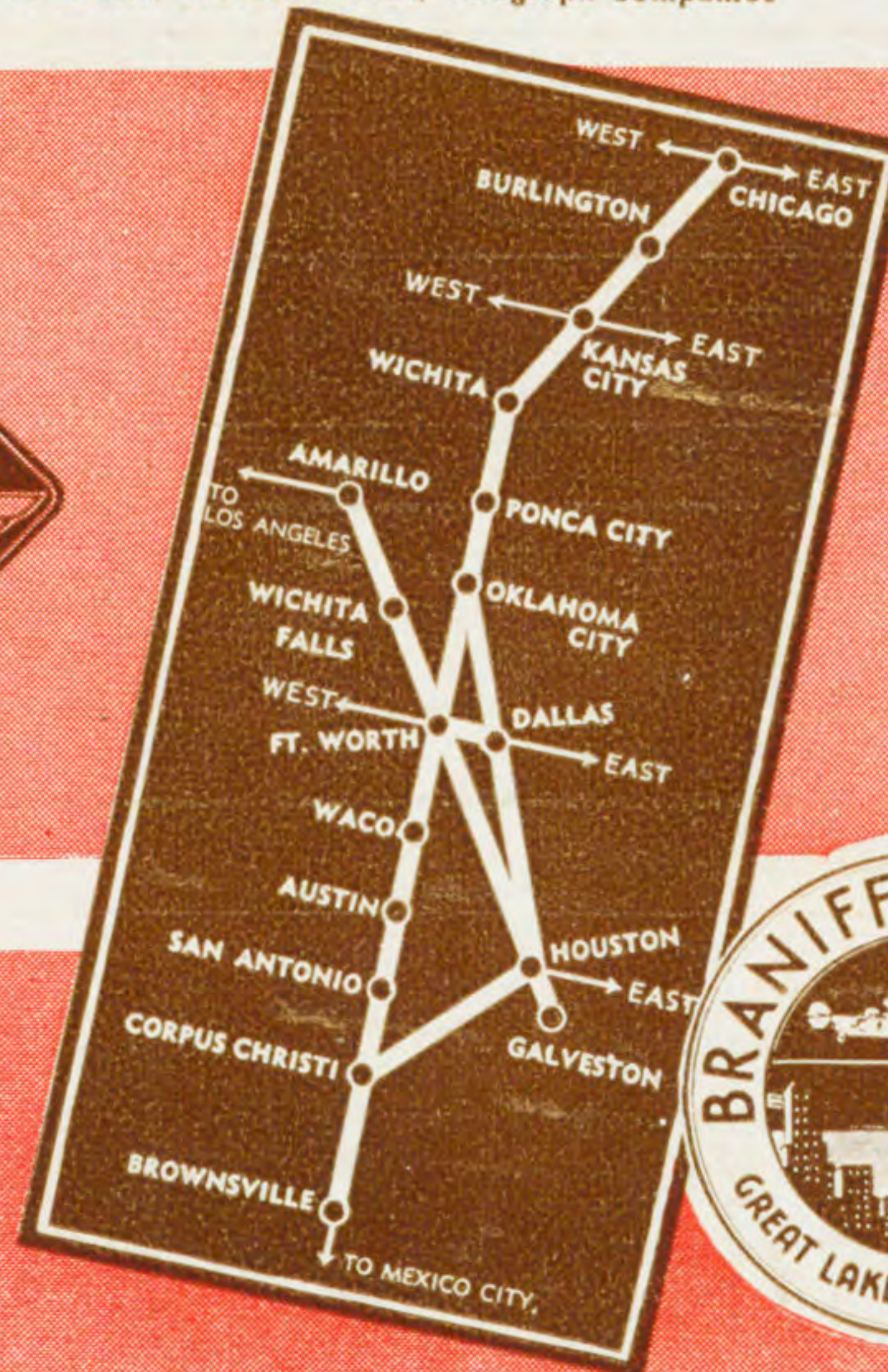
• MAIL •



TICKET OFFICES

City	Address	Phone	Fare	Time
Amarillo, Tex.	Herring Hotel	4120		
	English Field	9373	75c	30
Austin, Tex.	Driskill Hotel	2-4620	50c	25
	Airport	Rural 97		
Brownsville, Tex.	El Jardin Hotel	1200	50c	25
	Airport	1201		
Burlington, Iowa	Airport	382	50c	15
Chicago, Ill.	City Ticket Office			
	12 S. LaSalle	State 3254	75c	50
	Airport-Airlines Tkt. Off.	Gro. 1400		
Corpus Christi, Tex.	Plaza Hotel	3888	50c	20
	Airport	3887		
Dallas, Tex.	Baker Hotel	2-9361	50c	40
	Love Field	5-2128		
Ft. Worth, Tex.	Texas Hotel	2-9626	50c	35
	Meacham Field	6-3387		
Galveston, Tex.	Airport	992	50c	30
Houston, Tex.	Rice Hotel	Pres. 5159	50c	55
	Airport	Wyd. 9-1211		
Kansas City, Mo.	Muehlebach Hotel	Har. 5990	30c	15
	Airport	Nor. 1740		
Los Angeles, Calif.	City Ticket Office			
	540 West 6th Street	Mich. 8881		
Mexico City	Av. F. L. Madero No. 14	Eric. 8-04-96		
		Mex.L-31-00		
New York City, N. Y.	City Ticket Office			
	41 East 47th Street	Eld. 5-2300		
Oklahoma City, Okla.	Braniff Bldg.	2-0256	75c	40
	Ticket Office	7-8625		
Ponca City, Okla.	Airport	2764	35c	15
San Antonio, Tex.	Gunter Hotel	Gar. 9344	50c	35
	Stinson Field	Ken. 6183		
Waco, Tex.	Airport	556	75c	15
Wichita, Kan.	Allis Hotel	4-6912	75c	35
	Airport	3-9633		
Wichita Falls, Tex.	Airport	6510	75c	35

Reservations also at Hotels, Travel Bureaus, Telegraph Companies



EFFECTIVE JUNE 1, 1937

TWO MOTORS TWO WAY RADIO  
TWO PILOTS TWO RUDDERS  
*for Smoother Flying*



Smoke, if you like! Individual ventilators and ash trays. Reversible, upholstered chairs make tete-a-tetes easy and comfortable.



Delightful meals aloft! Individual serving! Another feature of Braniff's thoughtful service aground and aloft.



Women find individual windows and lights, luxurious reclining arm chairs and ample leg room for complete relaxation.



Even children prefer Braniff! Reclining, upholstered chairs and all comfort facilities provide complete enjoyment.

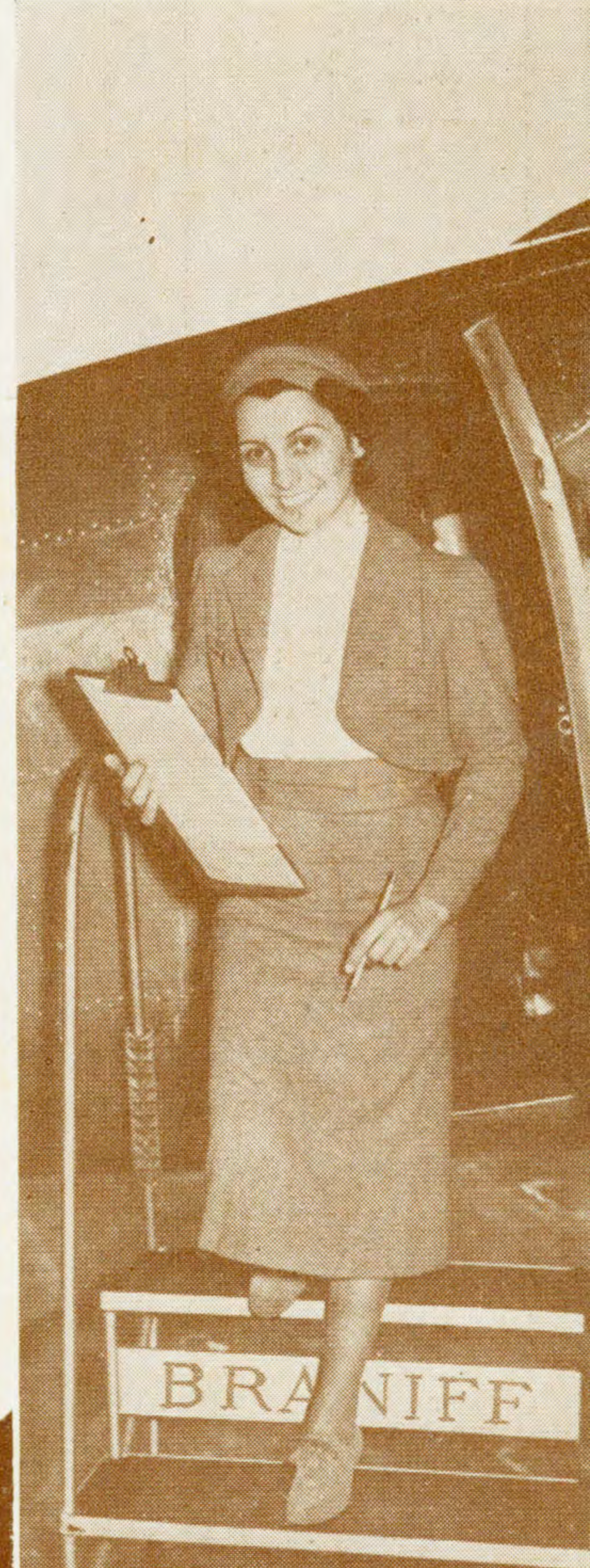
...BRANIFF SPREADS NEW  
*Douglas Wings*  
OVER THE SOUTHWEST



Keeping pace with the swift increase in the popularity of its friendly transportation through Mid-America, Braniff has supplemented its fleet of speedy, smooth-flying Lockheed Electras with a new fleet of sumptuous 14-passenger Douglas transports. These fine Douglas DC-2's are equipped with every modern navigational aid, plus the restful comfort of fully adjustable individual chairs, windows for every passenger and super-quiet cabins. The addition of these superlatively fine Douglas airplanes increases Braniff's passenger capacity 140% and creates a twin fleet of Douglas and Lockheed airliners that carries Braniff Airways' service to new highs of fast, dependable flights, luxurious comfort and customer satisfaction.

**A New Air-Hostess Service Too!**

Setting a new style in air hostesses, Braniff Airways gives point and color to its international connections by requiring all its hostesses to speak Spanish and has garbed them most fetchingly in modified Mexican uniforms. Braniff's own color scheme of silver and red has been carried out in these new uniforms with their silver grey boleros, skirts and shoes, red halo hats and sashes. This departure from the orthodox in the styling, training and pre-requisites of its air hostesses is in complete harmony with Braniff's policy to provide its passengers with an individualistic and personal service of the highest type, as well as with efficient, reliable, fast, comfortable transportation. Now, more than ever, is it true that, "Your best travel BUY is by Braniff, of course!"



FRIENDLY TRANSPORTATION FROM  
THE GREAT LAKES TO THE GULF

YOU RECEIVED THIS FOLDER From:

