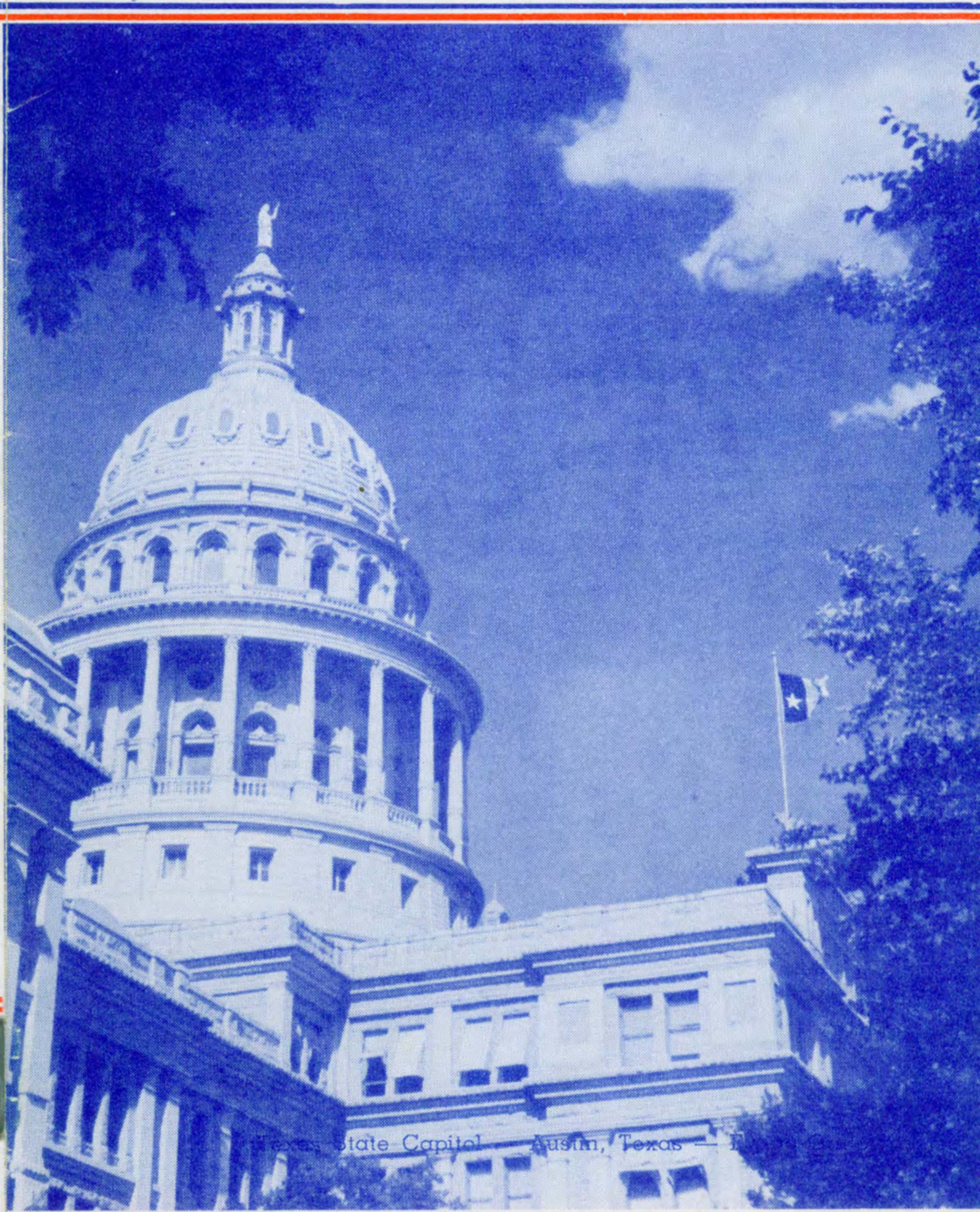


EFFECTIVE JUNE 1, 1940  
1928—TWELFTH ANNIVERSARY—1940

# BRANIFF

## *Airways*



Texas State Capitol — Austin, Texas — Flag

*IT PAYS TO* **FLY BRANIFF** AIRWAYS



*1940 Super*

*B-Liners*

# BRANIFF

*Super B-Liners*

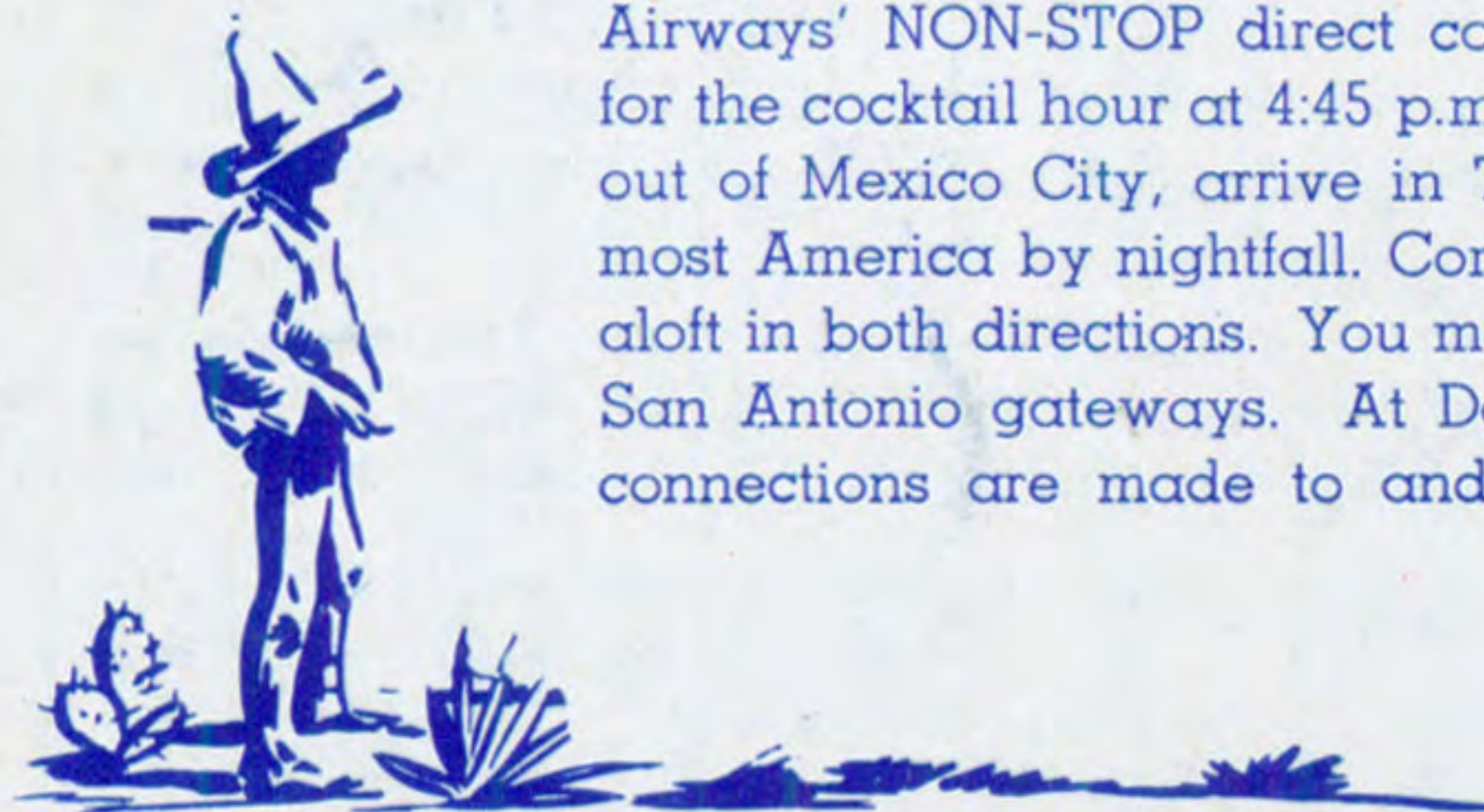
TO THROUGH AND FROM  
THE GREAT SOUTHWEST



*New Wings to Mexico*

## THE MEXPRESS FLYER

"The Mexpress Flyer" — a new, scenic all-daylight flight to and from romantic Mexico! After breakfast aloft out of Amarillo, "The Mexpress Flyer" departs from Fort Worth and Dallas in mid-morning, Houston and San Antonio before luncheon and arrives in Mexico City (via Pan American Airways' NON-STOP direct connecting flight at Brownsville) for the cocktail hour at 4:45 p.m. Returning, you breakfast aloft out of Mexico City, arrive in Texas cities that afternoon and most America by nightfall. Complimentary luncheon is served aloft in both directions. You may fly via either the Houston or San Antonio gateways. At Dallas, Fort Worth and Amarillo connections are made to and from practically all America.



## TICKET OFFICES

CITY	ADDRESS	PHONE	CITY	ADDRESS	PHONE
Amarillo, Tex.	Amarillo Hotel	2-2272	Kansas City, Mo.	Muehlebach Htl.	Ha. 5990
	English Field	9373		Airport	No. 4740
Austin, Tex.	Driskill Hotel	2-6248	Los Angeles, Calif.	Western Traffic Office	
	Airport	2-5633		516 West 6th St.	Mich. 8881
Brownsville, Tex.	Airport	1200	Mexico City	Cinco de Mayo No. 27	
	After 9:00 P.M.	993		Eric. 282-06, Mex. L.2064	
Chicago, Ill.	City Tkt. Offices		New York, N.Y.	City Tkt. Office	
	29 E. Monroe	Ran. 3181		41 E. 42nd St.	Van. 6-0100
	Airport-Airlines		Okla. City, Okla.	121 No. Robinson	7-3525
	Tkt. Office	Por. 6700		Airport	7-8625
Corpus Christi, Tex.	Plaza Hotel	5558	Ponca City, Okla.	Airport	366
	Airport	7512	San Antonio, Tex.	Gunter Hotel	F. 3381
Dallas, Tex.	Baker Hotel	7-3345		Nights	F. 5564
	Love Field	5-2128		Stinson Field	K. 6183
Ft. Worth, Tex.	Texas Hotel	3-2505	Waco, Tex.	Airport	556
	Meacham Field	6-3387	Wichita, Kans.	Allis Hotel	4-6912
Galveston, Tex.	Airport	8133		Airport	3-9633
Houston, Tex.	Rice Hotel	P. 2331	Wichita Falls, Tex.	Airport	2-4520
	Airport	W. 9-1211			

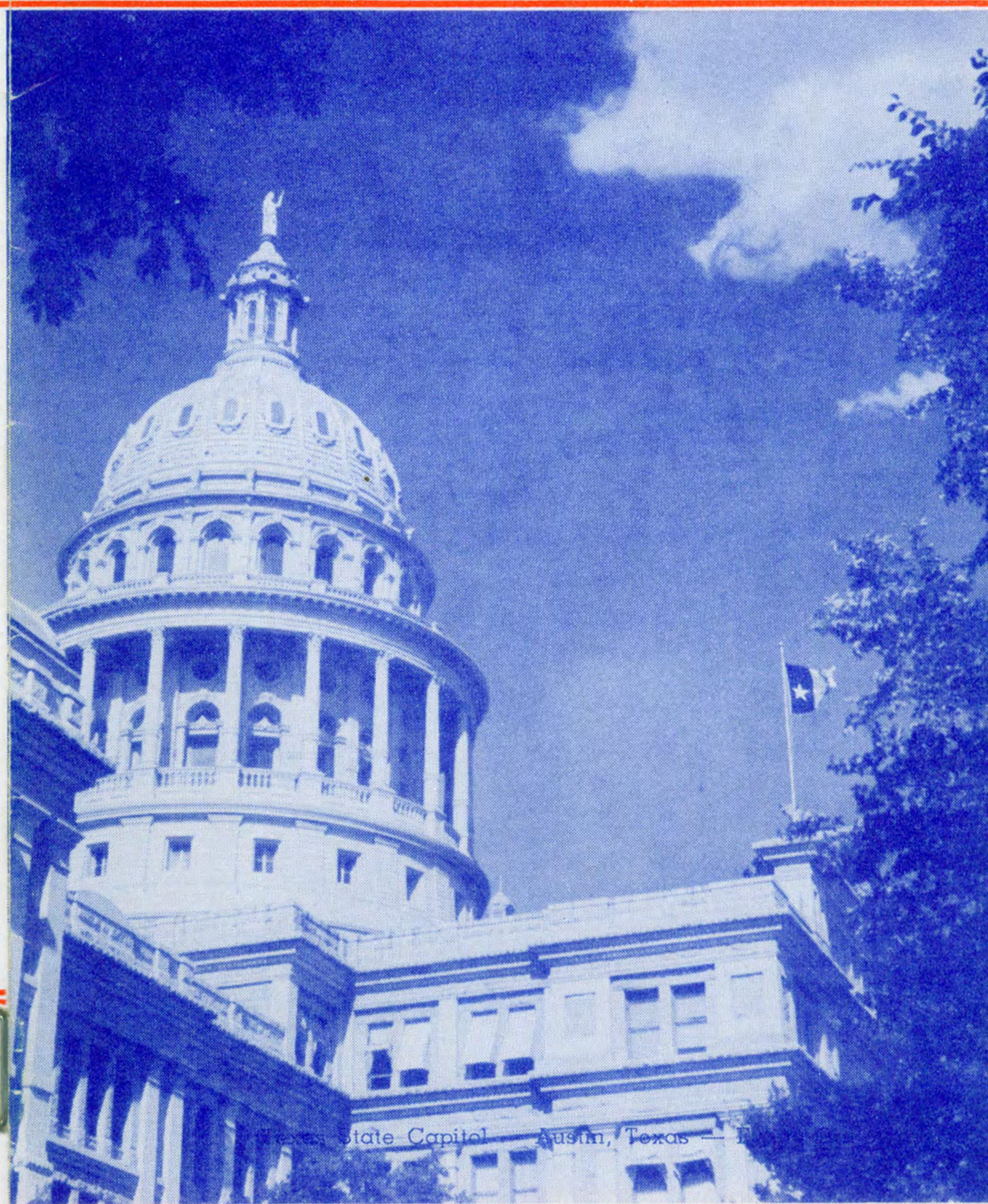
Reservations also at Hotels, Travel Bureaus, Telegraph Companies

EFFECTIVE JUNE 1, 1940

1928—TWELFTH ANNIVERSARY—1940

# BRANIFF

*Airways*



IT PAYS TO **FLY BRANIFF** AIRWAYS

*1940 Super*

*B-Liners*



# 1. TO THROUGH AND FROM THE PROSPEROUS SOUTHWEST

CHICAGO — KANSAS CITY — DALLAS — HOUSTON — SAN ANTONIO — MEXICO CITY

SOUTHBOUND—Read Down				(DAILY SCHEDULES)										NORTHBOUND—Read Up						
THE COM-MUTER	THE MEXPRESS FLYER			THE SOONER		THE TEXANAIRE		THE STARLITE EXPRESS		ALOFT YOU ARE BRANIFF'S GUEST AT MEAL TIME				THE STARLITE EXPRESS		THE TEXANAIRE		THE SOONER		THE COM-MUTER
	Flite 19-9	Flite 9	Flite 3	Flite 5-11	Flite 5-7	Flite 3-21	Flite 3-17	Flite 1-15	Flite 1	Flite 2	Flite 4-2	Flite 12-4	Flite 12-8-10-4	Flite 10-4	Flite 18-6	Flite 14-6	Flite 20	Flite 22	Flite 6	
5	9:35	9:30	9:30	10:00	10:00	12:55	12:55	9:00	9:00	Lv. CHICAGO (CT) Ar.	5:45	11:30	11:30	11:30	3:43	3:43				
				12:40	12:40	3:35	3:35	11:40	11:40	Ar. KANSAS CITY Lv.	3:25	9:10	9:10	9:10	1:23	1:23				
				12:50	12:50	3:45	3:45	11:55	11:55	Ar. KANSAS CITY Lv.	3:12	8:55	8:55	8:55	1:13	1:13				
				2:05	2:05	5:00	5:00	1:10	1:10	Lv. Wichita Ar.	2:02	7:45	7:45	7:45	*12:03	*12:03				
				2:13	2:13	5:08	5:08	1:17	1:17	Lv. Wichita Ar.	1:55	7:38	7:38	7:38	11:55	11:55				
						5:40	5:40			Lv. Ponca City Ar.	1:23									
						5:45	5:45			Lv. Ponca City Ar.	1:18									
				3:18	3:18	6:28	6:28	2:22	2:22	Lv. Oklahoma City Ar.	12:35	*6:33	*6:33	*6:33	10:50	10:50				
				3:26	3:26	*6:38	*6:38	2:28	2:28	Lv. Oklahoma City Ar.	12:27	6:27	6:27	6:27	10:42	10:42				
				4:38	4:38	7:50	7:50	3:40	3:40	Lv. DALLAS Ar.	11:15	5:15	5:15	5:15	9:30	9:30				
				*5:30	*5:25	8:05	8:05	3:50	3:55	Lv. DALLAS Ar.	11:00	5:04	4:40	4:40	8:20	8:20				
						8:20	8:20	4:15	4:15	Lv. Ft. Worth Ar.	10:40	4:44			9:01	9:01				
								4:25	4:25	Lv. Ft. Worth Ar.	10:20	4:34			8:55	8:55				
								4:32		Lv. Waco Ar.	9:45									
								4:37		Lv. Waco Ar.	9:40									
						9:52		5:47		Lv. HOUSTON Ar.	8:30									
5:50										Lv. HOUSTON Ar.	8:20									
										Lv. Galveston Ar.	8:00									
										Lv. Austin Ar.	9:10	3:24								
										Lv. Austin Ar.	9:05	3:17								
7:10										Lv. SAN ANTONIO Ar.	8:25	2:37								
										Lv. SAN ANTONIO Ar.	8:15	2:27								
										Lv. Corpus Christi Ar.	7:25	1:37	1:40							
										Lv. Corpus Christi Ar.	7:30	1:30	1:30							
										Lv. BROWNSVILLE (CT) Ar.	7:15	1:30	1:30							
										Lv. BROWNSVILLE (CT) Ar.	6:20	*12:35	*12:35							
										Mexico City(PAA) (CT) Lv.	1:20	7:45	7:45							
											12:35									

AMARILLO — FT. WORTH — DALLAS — HOUSTON — SAN ANTONIO — MEXICO CITY

SOUTHBOUND—Read Down				(DAILY SCHEDULES)										NORTHBOUND—Read Up						
THE COM-MUTER	THE MEXPRESS FLYER			THE SOONER		THE TEXANAIRE		THE MEXPRESS FLYER		ALOFT YOU ARE BRANIFF'S GUEST AT MEAL TIME				THE MEXPRESS FLYER		THE TEXANAIRE		THE SOONER		THE COM-MUTER
	Flite 15	Flite 1	Flite 21	Flite 17	Flite 11	Flite 11-7	Flite 3	Flite 3-19-9	Flite 3-9	Flite 12-8-10	Flite 12-10	Flite 10	Flite 2	Flite 4	Flite 18-14	Flite 14	Flite 20	Flite 22	Flite 6	
5	3:50	3:55	8:05	8:00	2:25	2:25	16:40	16:40	16:40	Lv. AMARILLO (CT) Ar.	7:26	7:26	7:26	11:10	11:10					
		4:15		3:45	3:45	3:45	8:00	8:00	8:00	Lv. Wichita Falls Ar.	6:06	6:06	6:06	9:50	9:50					
		4:25		3:50	3:50	3:50	8:05	8:05	8:05	Lv. Wichita Falls Ar.	6:01	6:01	6:01	9:45	9:45					
				4:35	4:35	4:35	8:50	8:50	8:50	Lv. Ft. Worth Ar.	5:16	5:16	5:16	9:00	9:00					
				4:45	4:45	4:45	8:59	8:59	8:59	Lv. Ft. Worth Ar.	5:06	5:06	5:06	8:47	8:47					
				5:05	5:05	5:05	9:19	9:19	9:19	Lv. DALLAS Ar.	4:48	4:48	4:48	8:27	8:27					
				*5:30	*5:25	*5:25	9:30	9:30	9:30	Lv. DALLAS Ar.	4:40	4:40	4:40	8:20	8:20					
										Lv. Ft. Worth Ar.										
										Lv. Ft. Worth Ar.										
										Lv. Waco Ar.										
										Lv. Waco Ar.										
5:50										Lv. HOUSTON Ar.	3:10	3:10	3:10	8:30	8:30					
										Lv. HOUSTON Ar.	2:55	2:55	2:55	8:20	8:20					
										Lv. Galveston Ar.										
										Lv. Austin Ar.										
										Lv. Austin Ar.										
7:10										Lv. SAN ANTONIO Ar.										
										Lv. SAN ANTONIO Ar.										
										Lv. Corpus Christi Ar.										
										Lv. Corpus Christi Ar.										
										Lv. BROWNSVILLE (CT) Ar.										
										Lv. BROWNSVILLE (CT) Ar.										
										Mexico City(PAA) (CT) Lv.										
											4:45	4:45	4:45	1:20	1:20					
											4:45	4:45	4:45	1:20	1:20					

**REFERENCE MARKS**  
 \*—Complimentary full-course meal aloft  
 †—Complimentary light meal aloft  
 #—Complimentary box supper with fried chicken  
 †—Flag stop to discharge revenue passengers  
 PAA—Via Pan American Airways  
 CT—Central Standard Time

Light face figures—A. M. Time. Dark face figures—P. M. Time  
 { 21-Passenger Super-B-Liners operated on all flites between Chicago and Dallas, and on Flites 1 (Dallas-Brownsville), 4 (Galveston-Dallas), 11 (Dallas-Galveston), and as a through ship Brownsville-Corpus Christi-Houston-Dallas on Flite 12-8-10.  
 { 14-Passenger B-Liners operated on Flites 2 (Brownsville-Dallas), 3 (Dallas-Houston), 7, 9, 11 (Amarillo-Dallas), 12 (Corpus Christi-Dallas), 14, 15, 17, 18, 19, 20, 21 and 22.  
 { Other schedules operated with 10-Passenger B-Liners.

**CONDENSED SCHEDULES**

**CHICAGO — KANSAS CITY — WICHITA**

WESTBOUND—Read Down			EASTBOUND—Read Up				
1	3	5	DAILY		6	4	2
9:00	12:55	10:00	Lv. Chicago (CT)	Ar. 3:43	11:30	5:45	
11:40	3:35	12:40	Ar. Kansas City	Lv. 1:23	9:10	3:25	
11:55	3:45	12:50	Lv. Kansas City	Ar. 1:13	8:55	3:12	
1:10	5:00	2:05	Ar. Wichita (CT)	Lv. 12:03	7:45	2:02	

**SPECIAL 15 DAY ROUND TRIP FARE Chicago — Kansas City .....\$28.60\***

**CHICAGO — KANSAS CITY — DALLAS — SAN ANTONIO**

SOUTHBOUND—Read Down			NORTHBOUND—Read Up				
1	3-17	5-7	DAILY		18-6	12-4	2
9:00	12:55	10:00	Lv. Chicago (CT)	Ar. 3:43	11:30	5:45	
11:55	3:45	12:50	Lv. Kansas City	Ar. 1:13	8:55	3:12	
1:17	5:08	2:13	Lv. Wichita	Ar. 11:55	7:38	1:55	
—	5:45	—	Lv. Ponca City	Ar. —	—	1:18	
2:28	6:38	3:26	Lv. Oklahoma City	Ar. 10:42	6:27	12:27	
3:40	7:50	4:38	Ar. Dallas	Lv. 9:30	5:15	11:15	
4:15	8:20	m5:06	Ar. Ft. Worth	Lv. 9:01	4:44	10:40	
5:35	f9:35	6:35	Ar. Austin	Lv. 7:45	3:24	9:10	
6:20	10:10	7:20	Ar. San Antonio (CT)	Lv. 7:00	2:37	8:25	

**FT. WORTH — DALLAS — SAN ANTONIO — THE VALLEY**

SOUTHBOUND—Read Down				NORTHBOUND—Read Up					
17	7	19-9	1	DAILY		18	20	12	2
—	4:45	9:01	—	Lv. Ft. Worth (CT)	Ar. —	—	—	—	—
8:00	5:25	9:35	3:55	Lv. Dallas	Ar. 9:21	11:20	5:04	11:00	
8:25	—	—	4:25	Lv. Ft. Worth	Ar. 8:55	10:55	4:34	10:20	
f9:35	6:35	10:45	5:35	Ar. Austin	Lv. 7:45	9:45	3:24	9:10	
—	6:40	10:50	5:40	Lv. Austin	Ar. 7:40	9:40	3:17	9:05	
10:10	7:20	11:30	6:20	Ar. San Antonio	Lv. 7:00	9:00	2:37	8:25	
—	7:27	11:40	6:30	Lv. San Antonio	Ar. —	8:50	2:27	8:15	
—	8:22	12:35	7:25	Ar. Corpus Christi	Lv. —	8:00	1:37	7:20	
—	8:27	12:40	7:30	Lv. Corpus Christi	Ar. —	7:55	1:30	7:15	
—	9:22	1:35	8:25	Ar. Brownsville (CT)	Lv. —	7:00	12:35	6:20	

**SAN ANTONIO — CORPUS CHRISTI — THE VALLEY**

SOUTHBOUND—Read Down			NORTHBOUND—Read Up				
7	19-9	1	DAILY		20	12	2
7:27	11:40	6:30	Lv. San Antonio (CT)	Ar. 8:50	2:27	8:15	
8:22	12:35	7:25	Ar. Corpus Christi	Lv. 8:00	1:37	7:20	
8:27	12:40	7:30	Lv. Corpus Christi	Ar. 7:55	1:30	7:15	
9:22	1:35	8:25	Ar. Brownsville (CT)	Lv. 7:00	12:35	6:20	

**SPECIAL 15 DAY ROUND TRIP FARES** Brownsville — Corpus Christi .....\$10.70\*  
 Brownsville — San Antonio .....13.70\*  
 San Antonio — Corpus Christi .....10.70\*

**HOUSTON — SAN ANTONIO**

WESTBOUND—Read Down		EASTBOUND—Read Up	
5	DAILY		6
5:50	Lv. Houston (CT)	Ar. 10:20	
7:10	Ar. San Antonio (CT)	Lv. 9:00	

**SPECIAL 15 DAY ROUND TRIP FARE Houston — San Antonio .....\$13.35\***

Special 15 day round trip tickets are sold for local use only. For full conditions consult tariff on file at all Braniff ticket offices.

**EXPLANATION OF REFERENCE MARKS**

Light face figures—A.M. Time      Dark face figures—P.M. Time  
 c—Via San Antonio  
 f—Flag stop to discharge revenue passengers  
 (CT)—Central Standard Time

**CONDENSED SCHEDULES**

**KANSAS CITY — OKLAHOMA CITY — DALLAS**

SOUTHBOUND—Read Down			NORTHBOUND—Read Up				
1	3	5	DAILY		6	4	2
11:55	3:45	12:50	Lv. Kansas City (CT)	Ar. 1:13	8:55	3:12	
1:17	5:08	2:13	Lv. Wichita	Ar. 11:55	7:38	1:55	
2:22	6:28	3:18	Ar. Oklahoma City	Lv. 10:50	6:33	12:35	
2:28	6:38	3:26	Lv. Oklahoma City	Ar. 10:42	6:27	12:27	
3:40	7:50	4:38	Ar. Dallas (CT)	Lv. 9:30	5:15	11:15	

**CHICAGO — KANSAS CITY — DALLAS — HOUSTON**

SOUTHBOUND—Read Down			NORTHBOUND—Read Up				
1-15	3-21	5-11	DAILY		14-6	10-4	4-2
9:00	12:55	10:00	Lv. Chicago (CT)	Ar. 3:43	11:30	5:45	
11:55	3:45	12:50	Lv. Kansas City	Ar. 1:13	8:55	3:12	
1:17	5:08	2:13	Lv. Wichita	Ar. 11:55	7:38	1:55	
—	5:45	—	Lv. Ponca City	Ar. —	—	1:18	
2:28	6:38	3:26	Lv. Oklahoma City	Ar. 10:42	6:27	12:27	
3:40	7:50	4:38	Ar. Dallas	Lv. 9:30	5:15	11:15	
4:32	—	—	Ar. Waco	Lv. —	—	9:45	
5:47	9:52	7:05	Ar. Houston	Lv. 6:50	3:10	8:30	
—	—	7:30	Ar. Galveston (CT)	Lv. —	2:40	8:00	

**FORT WORTH — DALLAS — HOUSTON — GALVESTON**

SOUTHBOUND—Read Down				NORTHBOUND—Read Up					
21	11	3	15	DAILY		14	22	10	4
—	4:45	8:59	—	Lv. Ft. Worth (CT)	Ar. 8:47	—	5:06	—	—
8:05	5:30	9:30	3:50	Lv. Dallas	Ar. 8:20	1:30	4:40	10:55	
—	—	—	—	Lv. Ft. Worth	Ar. —	—	—	10:25	
—	—	—	4:32	Ar. Waco	Lv. —	—	—	9:45	
—	—	—	4:37	Lv. Waco	Ar. —	—	—	9:40	
9:52	7:05	11:05	5:47	Ar. Houston	Lv. 6:50	12:00	3:10	8:30	
—	7:30	11:35	—	Ar. Galveston (CT)	Lv. —	—	2:40	8:00	

**HOUSTON — CORPUS CHRISTI — THE VALLEY**

SOUTHBOUND—Read Down			NORTHBOUND—Read Up			
5-7 (c)	9	DAILY		12-8	2-6 (c)	
5:50	11:15	Lv. Houston (CT)	Ar. 2:55	10:20		
8:22	12:30	Ar. Corpus Christi	Lv. 1:40	7:20		
8:27	12:40	Lv. Corpus Christi	Ar. 1:30	7:15		
9:22	1:35	Ar. Brownsville (CT)	Lv. 12:35	6:20		

**SPECIAL 15 DAY ROUND TRIP FARES** Brownsville — Houston .....\$24.00\*  
 Brownsville — Corpus Christi .....10.70\*  
 Houston — Corpus Christi .....13.35\*

**DALLAS — FORT WORTH — AMARILLO**

SOUTHBOUND—Read Down			NORTHBOUND—Read Up		
11	3	DAILY		14	10
2:25	6:40	Lv. Amarillo (CT)	Ar. 11:10	7:26	
3:45	8:00	Ar. Wichita Falls	Lv. 9:50	6:06	
3:50	8:05	Lv. Wichita Falls	Ar. 9:45	6:01	
4:35	8:50	Ar. Ft. Worth	Lv. 9:00	5:16	
5:05	9:19	Ar. Dallas (CT)	Lv. 8:27	4:48	

**ONE WAY FARE DALLAS OR FORT WORTH — AMARILLO .....\$12.50**  
 Save 10% on round trip tickets—90 day stop-overs.      For other low fares see page 10.

\* Special 15 day round trip tickets are sold for local use only. For full conditions consult tariff on file at all Braniff ticket offices.

**EXPLANATION OF REFERENCE MARKS**

Light face figures—A.M. Time      Dark face figures—P.M. Time  
 c—Via San Antonio  
 f—Flag stop to discharge revenue passengers  
 (CT)—Central Standard Time

# It Pays To Fly for Fun Too

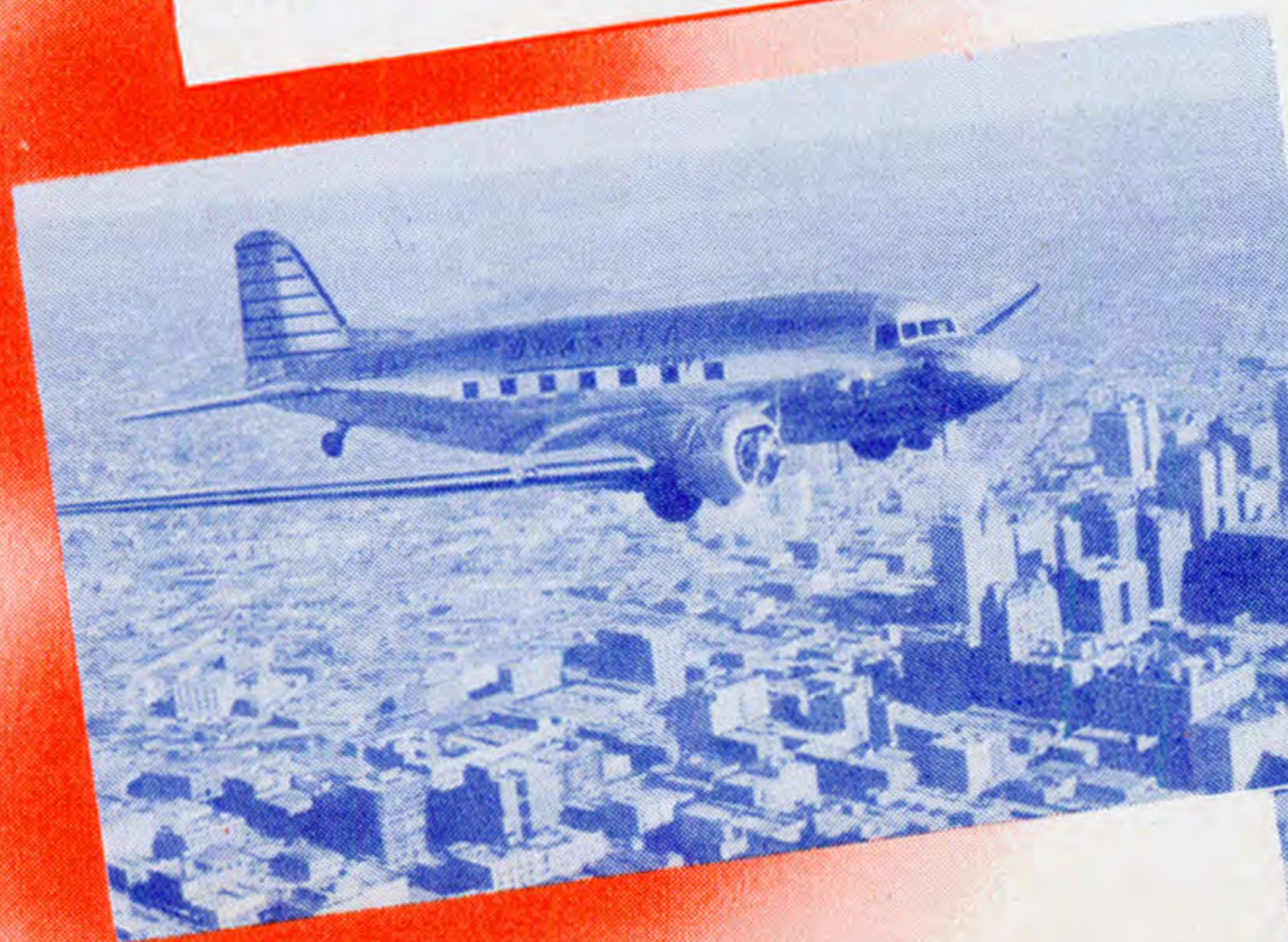


Along the Braniff route — from the Great Lakes to the Golden Gulf and south of the border lies a panorama of intriguing leisure lands. The Great Lakes offer cool, invigorating all-expense steamship cruises. Texas invites you to live a Southwestern ranch life on real cattle ranches. The Golden Gulf is a riviera rich in sun, water and deep sea fishing. Mexico City is a foreign holiday only a comfortable daylight or overnight flight from most America. And beyond lies cool, glorious Guatemala where tropical jungles are within 60 miles of snow covered peaks.

You'll find travel in sumptuous Braniff B-Liners a veritable vacation in itself. Investigate the low cost of vacations the air way. Friendly Braniff representatives will be happy to arrange your holiday to the finest detail.

Seven Days on the Great Lakes in the World's Largest Lake Steamship.  
All Expenses from Chicago **\$59.50**

Eight Days in Mexico — All Expenses, including Air Fare from Brownsville **\$114.00**



VIA CHICAGO AND KANSAS CITY GATEWAYS

SOUTHBOUND—Read Down									
Connecting Airlines	UAL 3, 35	AAL 3,17,23	TWA 15, 17	UAL 15	AAL 7, 43	TWA 3	UAL 1, 41	AAL 9,29,25	TWA 1, 21
Boston (AAL) (ET) Lv.	3:20	3:20	2:00	8:15	h10:00	h10:00	j6:10	j6:10	j6:10
New York Lv.	5:00	5:00	3:30	10:40	12:45	g11:30	9:00	8:00	8:30
Philadelphia Lv.	3:30		3:57						7:51
Washington Lv.		5:30	p4:35			p10:55	8:45		p8:40
Pittsburgh Lv.			6:13			g2:09			10:54
Cleveland Lv.	6:55			1:40			11:30		
Buffalo Lv.		5:20			2:57			9:27	
Detroit Lv.		7:10			j7:25			11:17	
Columbus Lv.			g7:31			g3:27			g11:33
Dayton (ET) Lv.			g8:17			g4:13			g12:19
Indianapolis (CT) Lv.			g8:16			g4:12			g12:18
St. Louis Lv.			g10:00			g5:57			g2:01
BRANIFF AIRWAYS	Flite 1	Flite 1-15	Flite 5-7	Flite 5-11	Flite 3-17	Flite 3-21			
Chicago (CT) Lv.	9:00	9:00	10:00	10:00	12:55	12:55			
Kansas City Ar.	11:40	11:40	12:40	12:40	3:35	3:35			
Kansas City Lv.	11:55	11:55	12:50	12:50	3:45	3:45			
Wichita Ar.	1:10	1:10	2:05	2:05	5:00	5:00			
Ponca City Ar.					5:40	5:40			
Oklahoma City Ar.	2:22	2:22	3:18	3:18	6:28	6:28			
Dallas Ar.	3:40	3:40	4:38	4:38	7:50	7:50			
Fort Worth Ar.	4:15		m5:06		8:20				
Waco Ar.		4:32							
Austin Ar.	5:35		6:35		f9:35				
Houston Ar.		5:47		7:05		9:52			
Galveston Ar.				7:30					
San Antonio Ar.	6:20		7:20		10:10				
Corpus Christi Ar.	7:25		8:22						
Brownsville Ar.	8:25		9:22						
Mexico City (PAA) Ar.	12:35								

VIA FORT WORTH — DALLAS GATEWAY

WESTBOUND—Read Down						
AMERICAN AIRLINES & DELTA AIR LINES	AAL 3, 5	DAL 3	AAL 7	AAL 1	DAL 1	
Boston (ET) Lv.	3:20		8:15			
New York Lv.	5:10		10:15	7:00		
Philadelphia Lv.						
Washington Lv.	6:07		11:57	8:42		
Cleveland Lv.	5:30			8:25		
Columbus Lv.	6:28			9:23		
Dayton Lv.	7:07			10:02		
Cincinnati (ET) Lv.	7:45			10:40		
Louisville (CT) Lv.	7:36			10:31		
Nashville Lv.	9:20		2:59	11:59		
Memphis Lv.	10:43		4:33	1:33		
Atlanta Lv.		6:30			9:00	
Birmingham Lv.		7:35			10:05	
Shreveport Lv.		10:50			1:14	
BRANIFF AIRWAYS	Flite 1	Flite 15	Flite 19-9	Flite 3-9	Flite 7	Flite 11
Fort Worth (CT) Lv.			9:01	9:01		
Dallas Lv.	3:55	3:50	9:35	9:30	5:25	5:30
Waco Ar.		4:32				
Austin Ar.	5:35		10:45		6:35	
Houston Ar.		5:47		11:05		7:05
Galveston Ar.				11:35		7:30
San Antonio Ar.	6:20		11:30		7:20	
Corpus Christi Ar.	7:25		12:35	12:30	8:22	
Brownsville Ar.	8:25		1:35	1:35	9:22	
Mexico City (PAA) (CT) Ar.	12:35		4:45	4:45		

WICHITA — KANSAS CITY — AND EAST

EASTBOUND—Read Down			WESTBOUND—Read Up				
Flite 4	Flite 6	Flite 2	BRANIFF AIRWAYS		Flite 1	Flite 3	Flite 5
7:45	12:03	2:02	Lv. Wichita (CT) Ar.		1:10	5:00	2:05
8:55	1:13	3:12	Ar. Kansas City Lv.		11:55	3:45	12:50
9:10	1:23	3:25	Lv. Kansas City Ar.		11:40	3:35	12:40
11:30	3:43	5:45	Ar. Chicago Lv.		9:00	12:55	10:00
2:24	7:04	9:48	Ar. Detroit (AAL) <sup>1</sup> (ET) Lv.		7:10	11:17	j7:25
2:43	7:38	11:08	Ar. Cleveland (UAL) Lv.		6:55	11:30	1:40
3:56	8:38	11:24	Ar. Buffalo (AAL) Lv.		5:20	9:27	2:57
3:58	8:48	9:32	Ar. Pittsburgh (TWA) Lv.		6:16	10:54	
tp5:24	s9:47	tp10:45	Ar. Washington Lv.		s5:30	s8:45	
u5:18	t9:14	t11:42	Ar. New York (ET) Lv.		su5:00	u9:00	s12:45

VIA KANSAS CITY AND CHICAGO GATEWAYS

NORTHBOUND—Read Down									
BRANIFF AIRWAYS	Flite 2	Flite 4-2	Flite 12-4	Flite 8-10-4	Flite 18-6	Flite 14-6			
Mexico City (PAA) Lv.	1:20		7:45	7:45					
Brownsville (CT) Lv.	6:20		12:35	12:35					
Corpus Christi Lv.	7:20		1:37	1:40					
San Antonio Lv.	8:25		2:37		7:00				
Galveston Lv.		8:00		2:40					
Houston Lv.		8:30		3:10		6:50			
Austin Lv.	9:10		3:24		7:45				
Waco Lv.		9:45							
Fort Worth Lv.	10:40	10:35	4:44		9:01				
Dallas Lv.	11:15	11:15	5:15	5:15	9:30	9:30			
Oklahoma City Lv.	12:35	12:35	6:33	6:33	10:50	10:50			
Ponca City Lv.	1:23	1:23							
Wichita Lv.	2:02	2:02	7:45	7:45	12:03	12:03			
Kansas City Ar.	3:12	3:12	8:55	8:55	1:13	1:13			
Kansas City Lv.	3:25	3:25	9:10	9:10	1:23	1:23			
Chicago Ar.	5:45	5:45	11:30	11:30	3:43	3:43			
CONNECTING AIRLINES	UAL 4	AAL 10,30,26	TWA 8, 30	UAL 12	AAL 8	TWA 2	UAL 22,18	AAL 4,16,20	TWA 14, 20
St. Louis (CT) Ar.						g10:40			g3:25
Indianapolis Ar.						12:21			g5:01
Dayton (ET) Ar.			11:19			e2:23			g6:57
Columbus Ar.			12:01			g2:40			g7:39
Detroit Ar.		9:48			2:24			7:04	
Buffalo Ar.		11:24			3:56			8:38	
Cleveland Ar.	11:08			2:43			7:38		
Pittsburgh Ar.			9:32			e3:58			e8:48
Washington Ar.		2:35	p10:45			p5:24		9:47	p10:22
Philadelphia Ar.			11:43				10:40		10:58
New York Ar.	1:43	12:55	11:42	5:18	5:55	e6:08	9:55	9:55	e9:14
Boston (AAL) (ET) Ar.	3:35	2:20	1:35	8:20	8:20	8:20	12:00	12:00	11:30

VIA DALLAS — FORT WORTH GATEWAY

EASTBOUND—Read Down							
BRANIFF AIRWAYS	Flite 2	Flite 4	Flite 12	Flite 8-10	Flite 20	Flite 18	Flite 14
Mexico City (PAA) Lv.	1:20		7:45	7:45			
Brownsville (CT) Lv.	6:20		12:35	12:35	7:00		
Corpus Christi Lv.	7:20		1:37	1:40	8:00		
San Antonio Lv.	8:25		2:37		9:00	7:00	
Galveston Lv.		8:00		2:40			
Houston Lv.		8:30		3:10			6:50
Austin Lv.	9:10		3:24		9:45	7:45	
Waco Lv.		9:45					
Dallas Ar.	11:00	10:55	5:04	4:40	11:20		8:20
Fort Worth Ar.						8:55	8:47
AMERICAN AIRLINES & DELTA AIR LINES	AAL 4,6	AAL 2	DAL 4	AAL 12	DAL 6	AAL 8	DAL 2
Shreveport (CT) Ar.			7:33		1:30		10:37
Birmingham Ar.			10:54		5:03		1:49
Atlanta Ar.			11:59		6:10		2:55
Memphis Ar.	1:42	11:23		2:23		11:35	
Nashville Ar.	5:40	12:50		3:48		1:04	
Louisville (CT) Ar.	8:04					3:09	
Cincinnati (ET) Ar.	9:51					4:56	
Dayton Ar.	10:29					5:41	
Columbus Ar.	11:06					6:18	
Cleveland Ar.	12:01					7:13	
Washington Ar.	7:07			9:10		5:37	
Philadelphia Ar.	8:14	5:49		10:17			
New York Ar.	9:02	7:40		11:17		7:20	
Boston (ET) Ar.	10:45	j9:20				h8:45	

AMARILLO — FORT WORTH — DALLAS — NEW ORLEANS

EASTBOUND—Read Down			WESTBOUND—Read Up	
Flite 11	Flite 3		Flite 14	Flite 22-10
5:30	9:30	Lv. Dallas (CT) Ar.	8:20	1:30
		Lv. Fort Worth Ar.		
7:05	11:05	Ar. Houston Lv.	6:50	12:00
7:20	1:35	Lv. Houston (EAL) Ar.	5:35	10:10
9:25	3:40	Ar. New Orleans (EAL) (CT) Lv.	3:25	8:00

CALIFORNIA — TEXAS — MEXICO

EASTBOUND—Read Down		AAL 4	AAL 8	TWA 4	AAL 2
San Francisco (UAL).....(PT) Lv.		2:00	8:30	6:00	7:00
Los Angeles.....(PT) Lv.		4:30	10:55	9:00	9:15
Phoenix.....(MT) Lv.			2:15		12:35
Tucson.....Lv.		8:20			1:27
El Paso.....Lv.			4:37		3:32
Albuquerque.....(MT) Lv.				2:29	
Amarillo.....(CT) Lv.				6:40	
Fort Worth.....Ar.			8:37	8:50	8:07
Fort Worth.....Lv.			b8:59	8:59	
Dallas.....Ar.		1:55	b9:19	9:19	
		Flite 1	Flite 15	Flite 19	Flite 3-9
Dallas.....Lv.		3:55	3:50	9:35	9:30
Fort Worth.....Lv.		4:25			8:25
Austin.....Ar.		5:35		10:45	f9:35
Houston.....Ar.			5:47		
Galveston.....Ar.				11:05	
San Antonio.....Ar.				11:35	
Corpus Christi.....Ar.		6:20		11:30	10:10
Brownsville.....Ar.		7:25		12:35	
				1:35	
Mexico City (PAA).....(CT) Ar.		12:35		4:45	

MEXICO — TEXAS — CALIFORNIA

WESTBOUND—Read Down		Flite 12	Flite 8-10	Flite 2	Flite 4	Flite 14	Flite 18
Mexico City (PAA).....(CT) Lv.		7:45	7:45	1:20			
Brownsville.....(CT) Lv.		12:35	12:35	6:20			
Corpus Christi.....Lv.		1:37	1:40	7:20			
San Antonio.....Lv.		2:37		8:25			7:00
Galveston.....Lv.			2:40		8:00		
Houston.....Lv.			3:10		8:30	6:50	
Austin.....Lv.		3:24		9:10			7:45
Fort Worth.....Ar.		4:34		10:20	10:25		8:55
Dallas.....Ar.			4:40	11:00	10:55	8:20	
		AAL 1	BNF 10 TWA 1	AAL 3	AAL 5	BNF 14 TWA 3	
Dallas.....(CT) Lv.			4:48	1:30	1:41	8:27	
Fort Worth.....Lv.		5:15	5:16			9:00	
Amarillo.....(CT) Ar.			7:26			11:10	
Albuquerque.....(MT) Ar.			8:21			12:21	
El Paso.....Ar.		7:57			4:05		
Tucson.....Ar.		10:08		5:30	5:56		
Phoenix.....Ar.		10:57			6:52		
Los Angeles.....(PT) Ar.		12:20	11:38	7:40	8:15	4:45	
San Francisco.....(PT) Ar.				u10:00	u11:38	6:51	

SCHEDULE REFERENCE MARK EXPLANATIONS

Light face figures — A.M. Time. Dark face figures — P.M. Time.

- CT—Central Standard Time.
- MT—Mountain Standard Time.
- ET—Eastern Standard Time.
- PT—Pacific Standard Time.
- BNF —Braniff Airways.
- AAL —American Airlines
- CAL —Continental Air Lines.
- DAL —Delta Air Lines
- EAL —Eastern Air Lines.
- MCA —Mid-Continent Airlines.
- NWA —Northwest Airlines
- PAA —Pan American Airways.
- PCA —Pennsylvania Central Airlines.
- TWA —Transcontinental & Western Air
- UAL —United Air Lines.
- \*—Complimentary full-course meal aloft
- †—Complimentary light meal aloft
- ‡—Complimentary box supper with fried chicken
- b—Via Braniff Flite 3, Ft. Worth to Dallas
- c—Via San Antonio
- e—Transfer at Chicago
- f—Flag stop to discharge revenue passengers
- g—Transfer at Kansas City
- h—Daily except Saturdays
- j—Daily except Sundays and holidays
- m—Via Flite 10 Dallas to Fort Worth
- p—Via PCA Pittsburgh-Washington
- s—Via American Airlines
- t—Via Transcontinental & Western Air
- u—Via United Air Lines

EXPLANATION OF FARE REFERENCES

- a—Via Amarillo only. To obtain fares to Los Angeles via American Airlines between Dallas or Ft. Worth and Los Angeles from cities south of Ft. Worth or Dallas, add \$4.40 one way and \$7.92 round trip to fare via Amarillo.
- b—Via TWA between Kansas City and Amarillo.
- c—Includes fare of connecting carrier. For routing see local agent.
- d—Via Dallas.
- e—Via direct service or via San Antonio without stopover on Southbound. Applies only via direct service Corpus Christi-Houston on Northbound.
- f—Via Continental Air Lines between Wichita and Denver.
- s—Via Houston-San Antonio.

All Fares shown herein are for information only, and are subject to change and correction without notice. Official Braniff Airways Fares are published in Braniff Airways, Inc. Local and Joint Passenger Tariff No. 1, CAA No. 1, which is on file with the Civil Aeronautics Authority, and which is open for public inspection at any Braniff Airways Office. All Fares are from Airport to Airport, and apply via the most direct routing unless otherwise indicated.

SLEEPER CHARGES NOT INCLUDED IN FARES SHOWN IN TABLE

DARK FACE—Round Trip

AIRPORT TO AIRPORT FARES

LIGHT FACE—One Way

	Amarillo	Austin	Brownsville	Chicago	Corpus Christi	Dallas	Fort Worth	Galveston	Houston	Kansas City	Oklahoma City	Ponca City	San Antonio	Waco	Wichita	Wichita Falls
Amarillo	\$82.50	\$82.95	\$82.50	\$82.50	\$82.50	\$82.50	\$82.50	\$82.50	\$82.50	\$82.50	\$82.50	\$82.50	\$82.50	\$82.50	\$82.50	\$82.50
Austin	148.50	171.18	148.50	148.50	148.50	148.50	148.50	148.50	148.50	148.50	148.50	148.50	148.50	148.50	148.50	148.50
Brownsville	93.60	93.60	168.48	110.60	110.60	110.60	110.60	110.60	110.60	110.60	110.60	110.60	110.60	110.60	110.60	110.60
Chicago	146.60	146.60	98.45	177.20	177.20	177.20	177.20	177.20	177.20	177.20	177.20	177.20	177.20	177.20	177.20	177.20
Corpus Christi	91.95	91.95	165.50	165.50	165.50	165.50	165.50	165.50	165.50	165.50	165.50	165.50	165.50	165.50	165.50	165.50
Dallas	70.45	70.45	126.80	126.80	126.80	126.80	126.80	126.80	126.80	126.80	126.80	126.80	126.80	126.80	126.80	126.80
Fort Worth	70.45	70.45	126.80	126.80	126.80	126.80	126.80	126.80	126.80	126.80	126.80	126.80	126.80	126.80	126.80	126.80
Galveston	83.95	83.95	151.10	151.10	151.10	151.10	151.10	151.10	151.10	151.10	151.10	151.10	151.10	151.10	151.10	151.10
Houston	81.95	81.95	147.50	147.50	147.50	147.50	147.50	147.50	147.50	147.50	147.50	147.50	147.50	147.50	147.50	147.50
Kansas City	56.65	56.65	101.98	101.98	101.98	101.98	101.98	101.98	101.98	101.98	101.98	101.98	101.98	101.98	101.98	101.98
Oklahoma City	68.40	68.40	123.12	123.12	123.12	123.12	123.12	123.12	123.12	123.12	123.12	123.12	123.12	123.12	123.12	123.12
Ponca City	68.40	68.40	123.12	123.12	123.12	123.12	123.12	123.12	123.12	123.12	123.12	123.12	123.12	123.12	123.12	123.12
San Antonio	85.45	85.45	153.80	153.80	153.80	153.80	153.80	153.80	153.80	153.80	153.80	153.80	153.80	153.80	153.80	153.80
Waco	76.45	76.45	137.60	137.60	137.60	137.60	137.60	137.60	137.60	137.60	137.60	137.60	137.60	137.60	137.60	137.60
Wichita	66.60	66.60	119.88	119.88	119.88	119.88	119.88	119.88	119.88	119.88	119.88	119.88	119.88	119.88	119.88	119.88
Wichita Falls	136.45	136.45	158.33	158.33	158.33	158.33	158.33	158.33	158.33	158.33	158.33	158.33	158.33	158.33	158.33	158.33