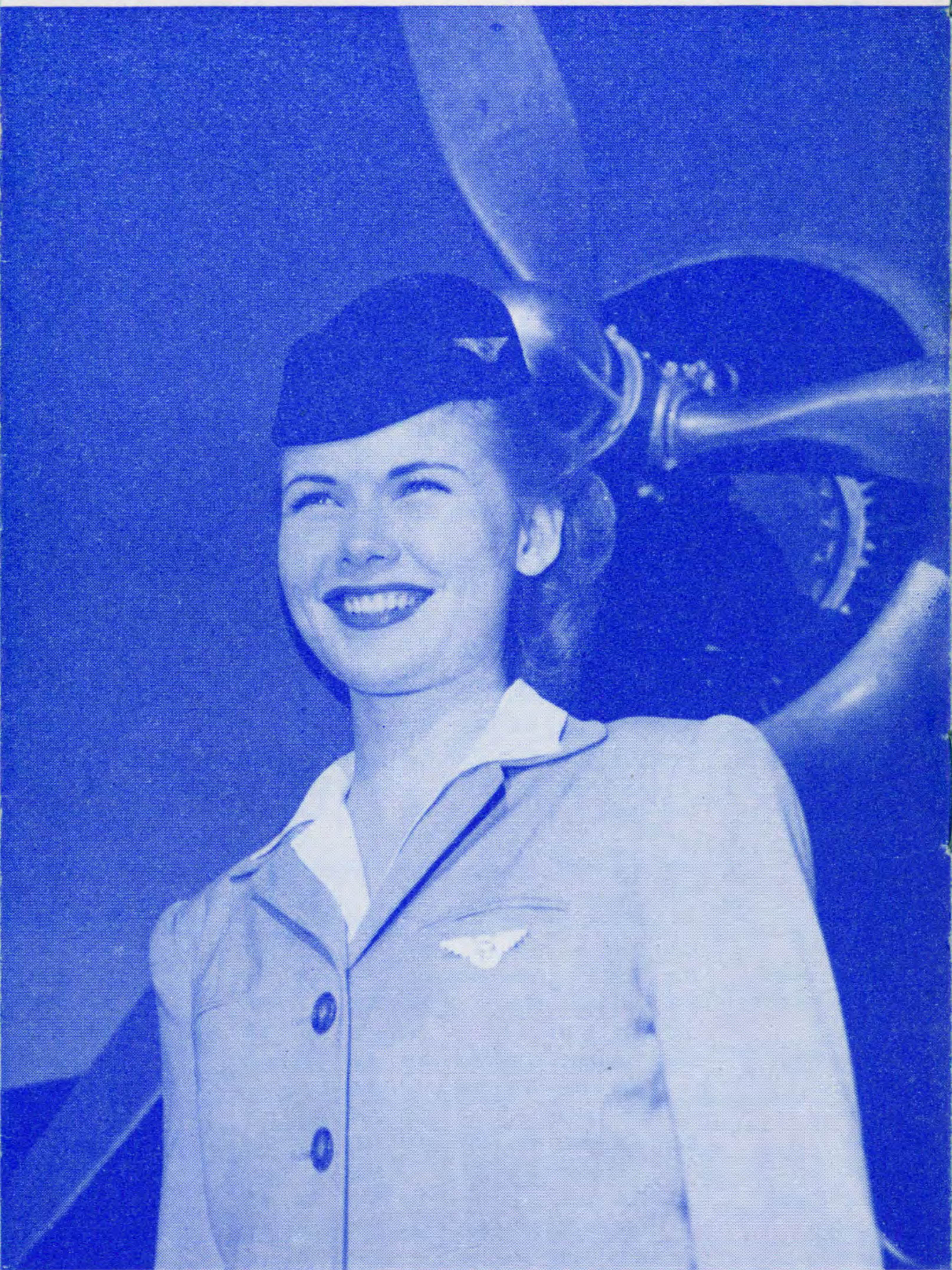


TIME TABLE FOLDER  
EFFECTIVE NOVEMBER 10, 1945  
Containing Fares and Interline Connections

# BRANIFF

## *Airways*

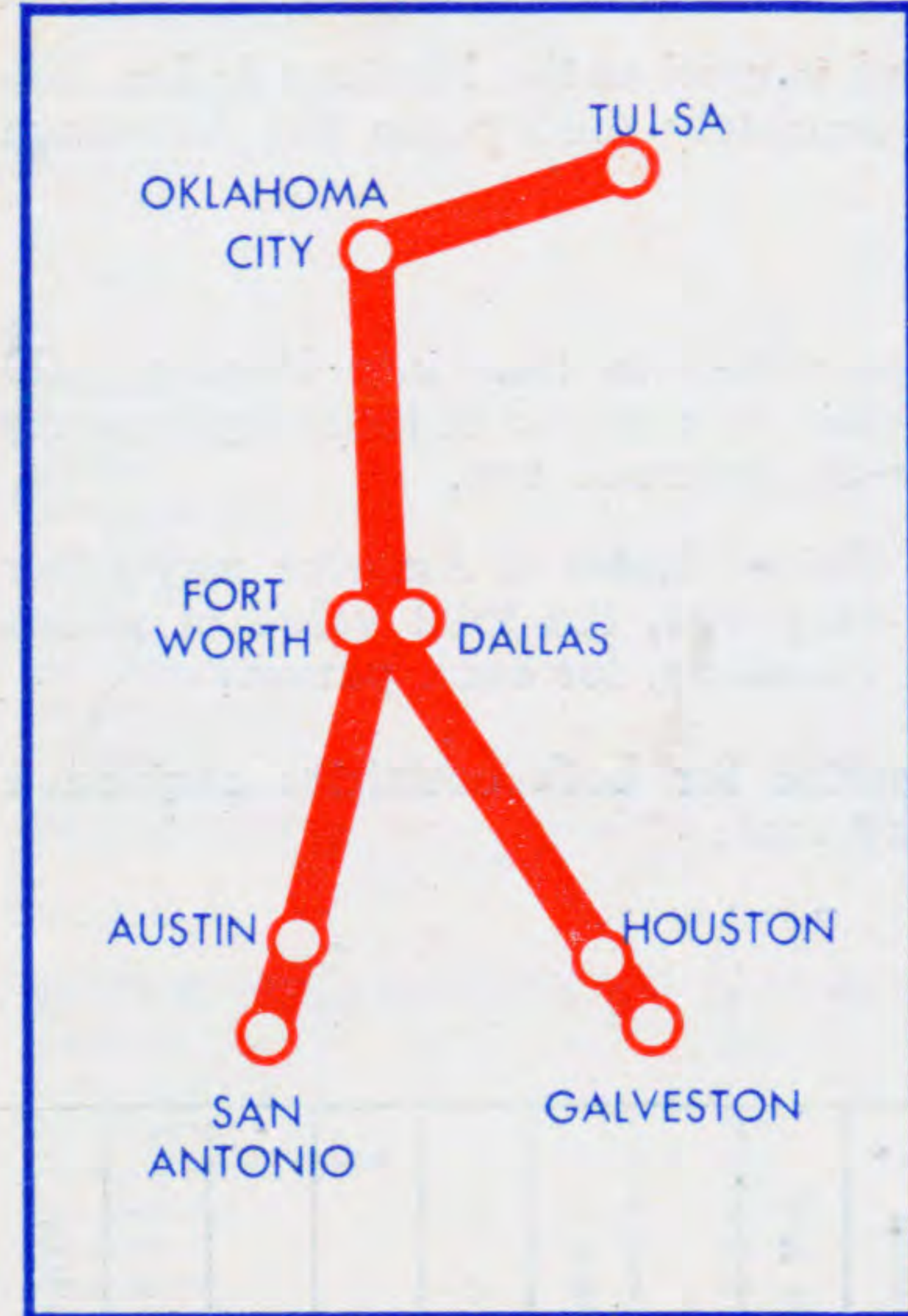


FROM THE GREAT LAKES...

*and the Rockies*

...TO THE GULF

# NEW BRANIFF SERVICE FOR THE OIL EMPIRE



★  
Connecting Tulsa with  
Oklahoma City, Dallas,  
Fort Worth, Austin, San  
Antonio, and Houston.



## BRANIFF AIRWAYS TICKET OFFICES

City	Address	Phone to Airport	Distance to Airport	Ground Fare
Amarillo, Tex.	Rule Building	2-4343	8¼ NE	\$1.10
	English Field	9373		
Austin, Tex.	Austin Hotel	8-6411	5 NE	.75
	Airport	8-9311		
Brownsville, Tex.	Airport	1200	5 E	.50
Burlington, Ia.	Airport	619	2½ SE	1.00
Chicago, Ill.	City Ticket Offices			
	29 E. Monroe Street	Ran. 3181	9 SW	1.15
Colorado Springs, Colo.	133 E. Pikes Peak Ave.	Ma. 1030		
	Peterson Field	Main 84	7 SE	1.00
Corpus Christi, Tex.	Plaza Hotel	5558	4½ SE	.75
	Airport	4365		
Dallas, Tex.	Adolphus Hotel			
	Baker Hotel	R-3345	7½ NW	.75
Denver, Colo.	Brown Palace Hotel	ALpine 1431	6 NE	.75
	Stapleton Field	East 7761		
Ft. Worth, Tex.	Texas Hotel	3-2505	5½ NW	.50
	Meacham Field	6-5431		
Ft. Smith, Ark.	Municipal Airport	8406	4 SE	.75
Galveston, Tex.	Jean Lafitte Hotel	2-9606	4½ SW	.75
	Galveston Field	4116		
Houston, Tex.	Rice Hotel	P-2331	10 SE	1.15
	Airport	W9-1211		
Kansas City, Mo.	Muehlebach Hotel	Ha. 5990	1½ NW	.35
	Airport	No. 4288		
Laredo, Tex.	Hamilton Hotel	345	3½ NE	.75
	Airway Terminal	841		
Little Rock, Ark.	Ben McGehee Hotel	4-6465	2½ SE	.60
	Adams Field	9207		
Lubbock, Tex.	Hilton Hotel	R-8506	3 N	.75
	So. Plains Field	7428		
Memphis, Tenn.	Peabody Hotel	5-7436	9 SE	1.00
	Municipal Airport	9-1569		
Mexico City	Madero & Filomeno Mata	Eric. 1298-06, Mex. JO3 37	3½ NE	1.25
	Airport	4480	3 S	1.00
Moline, Ill.	City Ticket Office			
Oklahoma City, Okla.	121 No. Robinson	7-3525	9 SW	.75
	After 6:00 pm	6-4425		
Pueblo, Colo.	610 N. Main	1515		
	Municipal Airport	7671	3 W	.50
San Antonio, Tex.	Gunter Hotel	F-3381	8½ N	1.00
	San Antonio Airport	T-3351		
Topeka, Kans.	Jayhawk Hotel	2-0535	3 NE	.75
	Municipal Airport	6479		
Tulsa, Okla.	Hotel Tulsa	5-3276		
	Municipal Airport	9-3634	7 NE	.75
Waco, Tex.	Blackland Field	8570	7½ NW	1.25
Wichita, Kans.	Allis Hotel	3-4251	5½ SE	.90
	Airport	6-6112		
Wichita Falls, Tex.	Marchman Hotel	4197	5½ NE	.75
	Airport	2-4520		

Reservations also at Hotels, Travel Bureaus, Telegraph Companies

TIME TABLE FOLDER  
EFFECTIVE NOVEMBER 10, 1945  
Containing Fares and Interline Connections

# BRANIFF Airways



FROM THE GREAT LAKES...  
*and the Rockies*  
...TO THE GULF

**Yesterday's Miracle IS TODAY'S HABIT**

Flight has become an essential part of our modern commerce and culture. Braniff's proposal for a coordinated domestic and international air transportation system in the Western Hemisphere will eliminate distance and border delays between the United States and Latin America, add much to trade, income and good living for all, and contribute substantially to our national objective of full employment.

**BRANIFF AIRWAYS**





