

TIME TABLE FOLDER
EFFECTIVE MARCH 1, 1946
Containing Fares and Interline Connections

BRANIFF

Airways

FLIGHT
PLANNING



Air MAIL
Air EXPRESS
Air PASSENGERS
Air FREIGHT

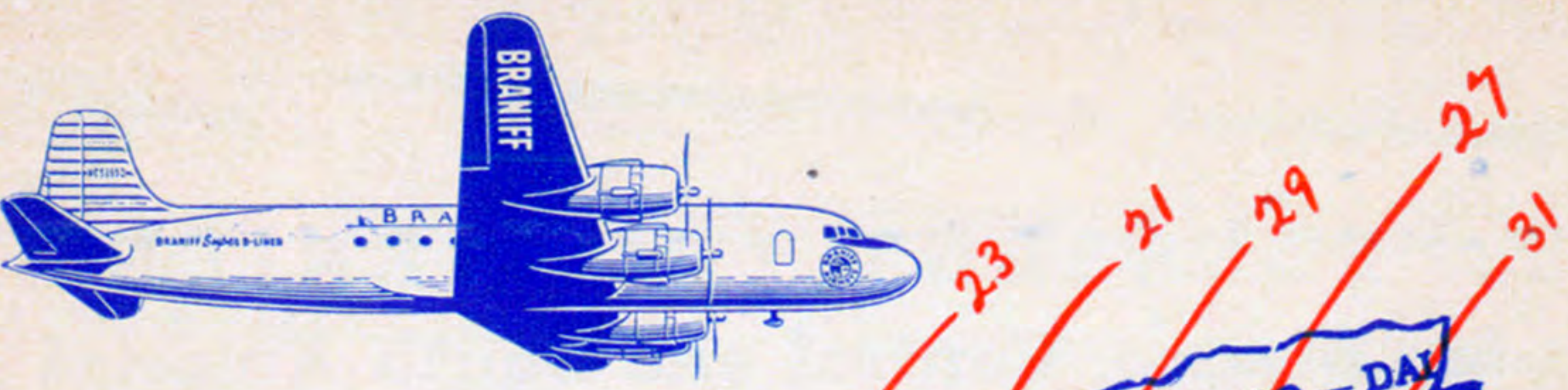


TABLE I

CHICAGO - KANSAS CITY - COLORADO - DALLAS

DAILY

Flite 33 Flite 63 Flite 67

Read Down

CHICAGO-DALLAS (CT)	Lv Ar	10:45	12:50	3:35	7:30
CHICAGO	Lv Ar	1:30	3:35	10:15	10:25
Moline	Lv Ar	1:40	3:45		
Burlington	Lv Ar				
KANSAS	Lv Ar				
Topeka	Lv Ar				
Wichita	Lv Ar				
Tulsa	Lv Ar				
Oklahoma City	Lv Ar				
Fort Worth	Lv Ar				
Dallas	Lv Ar				

NEW BRANIFF FLITE NUMBERING SYSTEM
EFFECTIVE MARCH 1st

Effective March 1, 1946, Braniff Airways has changed its system of numbering flites. The new system is designed to speed reservation service and to avoid errors in passenger routing.

When requesting space via Braniff Airways, please use the flite numbers indicated on the following pages.

Thank you.

BRANIFF AIRWAYS

BRANIFF AIRWAYS TICKET OFFICES

City	Address	Phone to Airport	Distance	Ground Fare
Amarillo, Tex.	Rule Building	2-4343	10NE	\$1.15
	English Field	9373		
Austin, Tex.	Austin Hotel	8-6411	5 NE	.75
	Airport	8-9311		
Brownsville, Tex.	Airport	1200	5 E	.50
Burlington, Ia.	Airport	619	2½SE	1.00
Chicago, Ill.	City Ticket Offices			
	29 E. Monroe Street	FRA. 8900	.9SW	1.15
Colorado Springs, Colo.	133 E. Pikes Peak Ave.	Ma. 1030		
	Peterson Field	Main 84	7 SE	1.00
Corpus Christi, Tex.	Plaza Hotel	5558	4½SE	.75
	Airport	4365		
Dallas, Tex.	Adolphus Hotel			
	Baker Hotel	R-3345	7½NW	.75
Denver, Colo.	Albany Hotel	ALpine 1431	6½NE	.75
	Brown Palace Hotel	ALpine 1431		
	Stapleton Airfield	East 7761		
Ft. Worth, Tex.	Texas Hotel	3-2505	5½NW	.50
	Meacham Field	6-5431		
Ft. Smith, Ark.	Municipal Airport	9156	4½ SE	.75
Galveston, Tex.	Jean Lafitte Hotel	2-9606	4½ SW	.75
	Galveston Hotel	4116		
Houston, Tex.	Rice Hotel	P-2331	10 SE	1.15
	Airport	W9-1211		
Kansas City, Mo.	Muehlebach Hotel	Ha.5990	1½ NW	.35
	Airport	No. 4288		
Laredo, Tex.	Hamilton Hotel	345	3½ NE	.75
	Airway Terminal	841		
Little Rock, Ark.	Ben McGehee Hotel	4-6465	2½SE	.60
	Adams Field	9207		
Lubbock, Tex.	Hilton Hotel	8506	3 N	.75
	So. Plains Field	7428		
Memphis, Tenn.	Peabody Hotel	5-7436	9 SE	.85
	Municipal Airport	9-1569		
Mexico City	Madera & Filomeno Mata	Eric. 1298-06, Mex. JO3-37	3½ NE	1.25
Moline, Ill.	Airport	4-480	3½ S	.75
Oklahoma City, Okla.	City Ticket Office			
	121 No. Robinson	7-3525	9 SW	.75
	After 6:00pm	6-4425		
Pueblo, Colo.	610 N. Main	1515		
	Municipal Airport	7671	3 W	.50
San Antonio, Tex.	Gunter Hotel	F-3381	8½ N	1.00
	Alamo Field	T-3351		
Topeka, Kan.	Jayhawk Hotel	2-0535	3 NE	.75
	Municipal Airport	6479		
Tulsa, Okla.	Hotel Tulsa	5-3276		
	Municipal Airport	9-3634	7 NE	.75
Waco, Tex.	Blackland Field	8570	7½ NW	1.25
Wichita, Kan.	Allis Hotel	3-4251	5½ SE	.90
	Airport	6-6112		
Wichita Falls, Tex.	Marchman Hotel	4197	5½ NE	.75
	Airport	2-4520		

Reservations also at Hotels, Travel Bureaus, Telegraph Companies

Air MAIL
Air EXPRESS
Air PASSENGERS
Air FREIGHT

TIME TABLE FOLDER
 EFFECTIVE MARCH 1, 1946
 Containing Fares and Interline Connections

BRANIFF Airways

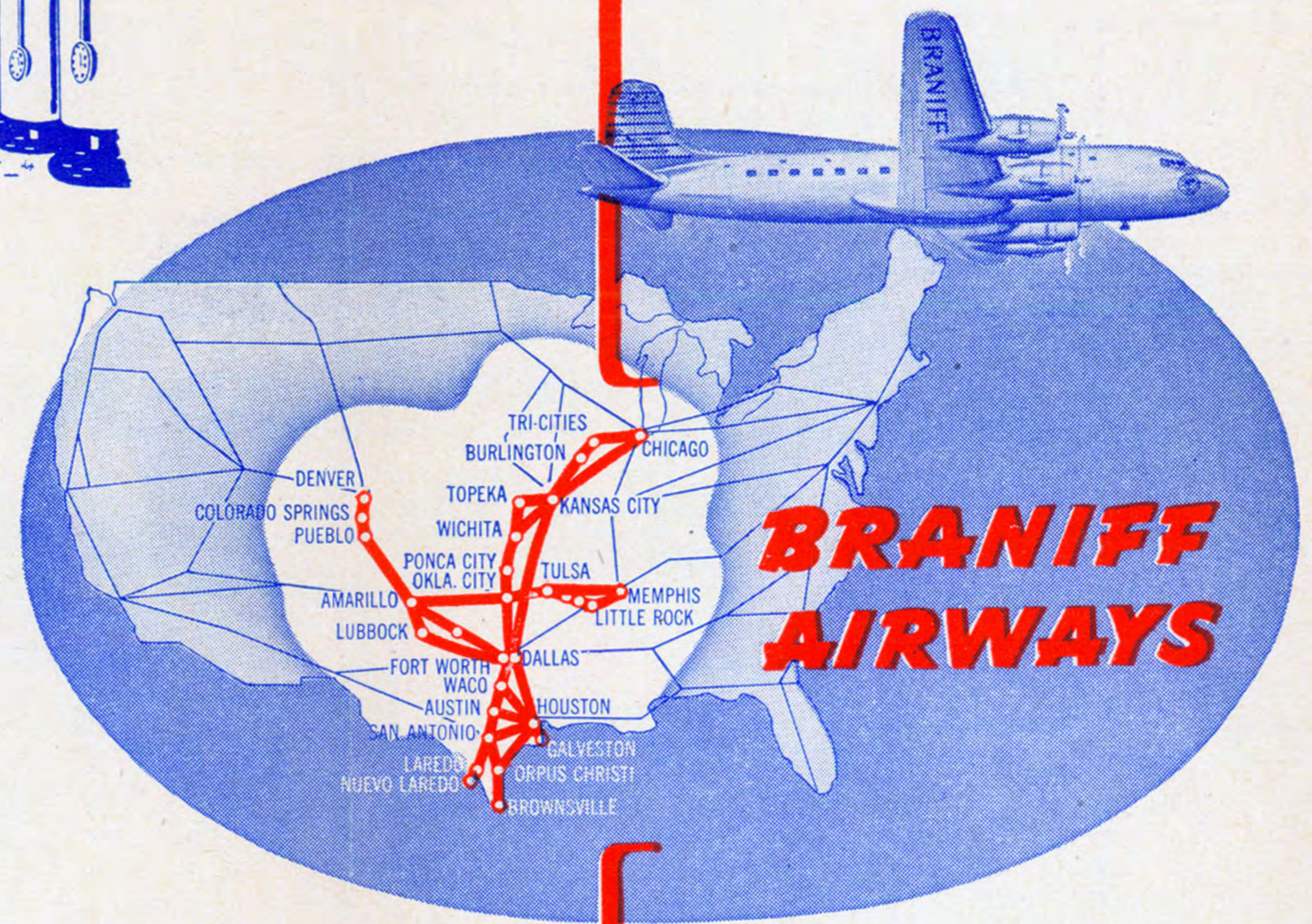


THE VAST AREA SERVED BY BRANIFF

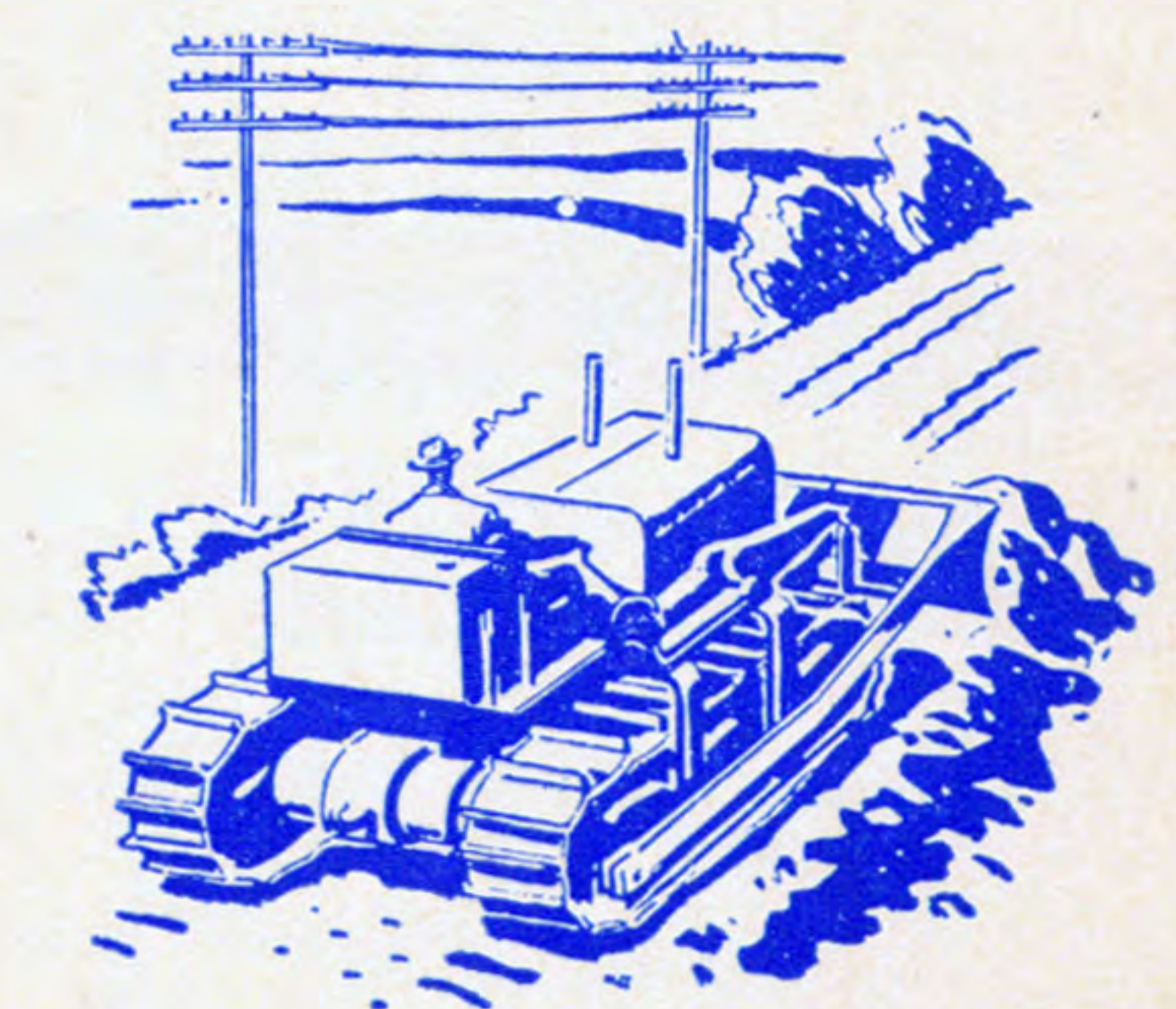


Produces

65.6% of the Nation's Crude Oil



BRANIFF AIRWAYS



Buys

29.7% of the Nation's Industrial Equipment

Air PASSENGERS • *Air* MAIL • *Air* EXPRESS • *Air* FREIGHT

More than 750,000 persons, during 1946, will gain added profit or pleasure from regular use of Braniff's daily air service through this rich area.

"Leaving" times of Braniff trips in this folder are times at which passenger loading forms close. "Arrival" times shown are times airplane arrives at unloading gate. Enplaning passengers should arrive at airport fifteen minutes before leaving times shown. Your co-operation will help us operate without delays.

TABLE I CHICAGO — KANSAS CITY — COLORADO — DALLAS — HOUSTON — SAN ANTONIO — MEXICO

Read Down		DAILY SOUTHBOUND SCHEDULES													
CHICAGO-DALLAS		Flite 23	Flite 21	Flite 29	Flite 27	Flite 31	Flite 35	Flite 39	Flite 59	Flite 53	Flite 51	Flite 43	Flite 45	Flite 49	Flite 73
CHICAGO (CT)	Lv	10:45	12:50			*7:30				10:15	*12:30	*4:40			*7:00
Moline	Ar									11:21					
Moline	Lv									11:26					
Burlington	Lv									12:01					
KANSAS CITY	Ar	1:30	3:35			10:15				*12:06	1:36	7:25			9:45
KANSAS CITY	Lv	1:40	3:45			*10:25				1:45	3:25	7:35			9:55
Topeka	Lv									2:18					
Topeka	Ar									2:23					
Wichita	Lv	3:00								2:23					11:15
Wichita	Ar	3:05								3:25					11:20
Tulsa	Lv									3:30					
Oklahoma City	Lv	4:13								4:38					12:28
Oklahoma City	Ar	4:18								4:43					12:33
Fort Worth	Lv	5:35								5:00					
Fort Worth	Ar	5:45								5:08					
DALLAS (CT)	Ar	6:10	6:50			1:30				6:30	11:30				1:50
DENVER-DALLAS				Flite 29	Flite 27		Flite 35	Flite 39					Flite 45	Flite 49	
DENVER (MT)	Lv						7:30						4:30		
Colorado Springs	Lv						8:07						5:07		
Colorado Springs	Ar						8:12						5:12		
Pueblo	Lv						8:38						5:38		
Pueblo	Ar						8:43						5:43		
AMARILLO (CT)	Lv						11:35						8:35		
AMARILLO	Lv						*11:45						8:45		
Lubbock	Lv			4:35											
Lubbock	Ar														
Wichita Falls	Lv														
Wichita Falls	Ar														
Oklahoma City	Lv														
Oklahoma City	Ar														
Fort Worth	Lv														
Fort Worth	Ar														
DALLAS (CT)	Ar			6:45			2:02	3:00					10:15	11:20	
	Ar						2:07	3:05					10:20		
	Ar						2:32	3:30					11:37		
DALLAS-SOUTH TEXAS-MEXICO		Flite 23	Flite 21	Flite 25	Flite 19	Flite 31	Flite 35		Flite 53	Flite 55	Flite 43	Flite 45			
DALLAS (CT)	Lv	*6:25	*7:10	\$6:55		1:55	2:40		\$6:15	*6:45	11:45	12:10			
Fort Worth	Lv					2:20			6:40		12:10				
Fort Worth	Ar					2:30			6:45		12:15				
Waco	Lv			7:39					7:29						
Waco	Ar			7:44					7:34						
HOUSTON	Lv			9:00					8:25						
HOUSTON	Ar			9:05					8:35						
Galveston	Lv			9:33					9:03						
Austin	Lv	7:42				3:47			8:19		1:32				
Austin	Ar	7:47				3:52			8:24		1:37				
SAN ANTONIO	Lv	8:27	8:50			4:32			9:04		2:17				
SAN ANTONIO	Ar	9:00	9:05			4:42					2:27				
Corpus Christi	Lv	10:12				5:54					3:39				
Corpus Christi	Ar					*6:05									
BROWNSVILLE	Lv					7:26									
BROWNSVILLE	Ar					P9:30									
Laredo	Lv		10:13												
Laredo	Ar		10:58												
NUEVO LAREDO (CT)	Ar		11:15												
NUEVO LAREDO (CT)		Lv	B12:25	C12:20											
Monterrey	Lv		B2:15	C1:10											
Ciudad Victoria	Lv		B2:20												
Ciudad Victoria	Ar		B4:10	C4:15											
MEXICO CITY	Ar														

"Leaving" times of Braniff trips in this folder are times at which passenger loading forms close. "Arrival" times shown are times airplane arrives at unloading gate. Enplaning passengers should arrive at airport fifteen minutes before leaving times shown. Your co-operation will help us operate without delays.

TABLE J MEXICO — SAN ANTONIO — HOUSTON — DALLAS — COLORADO — KANSAS CITY — CHICAGO

Read Down		DAILY NORTHBOUND SCHEDULES													
MEXICO-SOUTH TEXAS-DALLAS		Flite 20	Flite 24	Flite 28	Flite 22	Flite 34	Flite 32	Flite 40		Flite 54	Flite 68	Flite 64	Flite 12	Flite 64	Flite 82
MEXICO CITY (CT)	Lv							B8:00							
Ciudad Victoria	Lv							B9:55							
Ciudad Victoria	Ar							B10:00							
Monterrey	Lv														
Monterrey	Ar							11:45							
NUEVO LAREDO (CT)	Lv														
Laredo	Lv														
Laredo	Ar							12:05							
BROWNSVILLE	Lv							12:22							
BROWNSVILLE	Ar							*1:22							
Corpus Christi	Lv														
Corpus Christi	Ar														
SAN ANTONIO	Lv														
SAN ANTONIO	Ar														
Austin	Lv														
Austin	Ar														
Galveston	Lv														
HOUSTON	Lv														
HOUSTON	Ar														
Waco	Lv														
Waco	Ar														
Fort Worth	Lv														
Fort Worth	Ar														
DALLAS (CT)	Ar														
DALLAS-DENVER			Flite 24	Flite 28	Flite 22						Flite 44		Flite 68	Flite 64	
DALLAS (CT)	Lv		8:45	8:20							4:40		12:15	12:30	
Fort Worth	Lv		9:10	8:45							5:05		1:30	12:55	
Fort Worth	Ar		9:15	8:55							*5:10		1:35	1:00	
Oklahoma City	Lv														
Oklahoma City	Ar														
Wichita Falls	Lv														
Wichita Falls	Ar														
Lubbock	Lv														
Lubbock	Ar														
AMARILLO (CT)	Lv														
AMARILLO (CT)	Ar														
Pueblo	Lv														
Pueblo	Ar														
Colorado Springs	Lv														
Colorado Springs	Ar														
DENVER (MT)	Ar														
DALLAS-CHICAGO		Flite 20			Flite 22	Flite 38	Flite 32	Flite 40			Flite 52			Flite 60	Flite 82
DALLAS (CT)	Lv	8:50			9:30	*12:35	12:45	*4:35			7:20			12:05	2:20
Fort Worth	Lv						1:10								
Fort Worth	Ar						*1:15								
Oklahoma City	Lv						2:30								
Oklahoma City	Ar						2:35								
Tulsa	Lv						3:43								
Wichita	Lv						3:48								
Wichita	Ar						1:01								
Topeka	Lv						1:06								
Topeka	Ar						1:06								
KANSAS CITY	Lv						1:38								

The schedules of connecting airlines as shown herein are the latest available at the time of publication of this schedule folder and are subject to change without notice. For up-to-the-minute information may we suggest you call your BRANIFF AIRWAYS ticket office or travel agent.

TABLE K

CONNECTIONS SOUTHWEST VIA CHICAGO

SOUTHBOUND — Read Down		UAL 9	AAL 277-69	TWA 45	TWA 47-451	UAL 401-303	PCA 203-59	AAL 29	TWA 39	TWA 51	AAL 15-65	PCA 15	AAL 117-129	PCA 201-9	AAL 23	TWA 521-41
New York	(ET)Lv	5:15	4:55	3:45	8:30	7:00	4:30	1:40	2:30	4:15	8:00	8:00	9:15	9:00	12:10	1:15
Washington	Lv		4:55				7:00				7:00			9:15		1:30
Pittsburgh	Lv			7:15	9:20		8:35		5:05	4:50						4:20
Cleveland	Lv	8:30				10:32	10:04									
Detroit	(ET)Lv		8:47				11:01	6:02					3:25	1:22	4:32	
Chicago	(CT)Ar	9:49	9:41	9:10	12:00	11:51	11:56	6:56	7:00		11:00	10:50	11:45	2:17	5:26	6:15
CHICAGO		(CT)Lv	10:45			12:50		7:30			12:30		4:40		7:00	
Kansas City	Ar		1:30			3:35		10:15		1:36	3:15		7:25		9:45	
Wichita	Ar		3:00							3:25			8:55		11:15	
Oklahoma City	Ar		4:13							4:38			10:08		12:28	
DALLAS	Ar		6:10			6:50		1:30		6:00	6:30		11:30		1:50	
Fort Worth	Ar		5:35					2:20		6:40			12:10			
Houston	Ar		6:00					4:20		6:25			1:50			
San Antonio	Ar		8:27			8:50		4:32		9:04			2:17			
Corpus Christi	Ar		10:12			10:12		5:54					3:39			
Brownsville	Ar							7:26								
Nuevo Laredo	(CT)Ar		11:15			11:15										
MEXICO CITY	(CT)Ar		B4:10			B4:10		P12:50								

TABLE L

CONNECTIONS NORTHEAST VIA CHICAGO

NORTHBOUND — Read Down		Flite 20		Flite 22		Flite 32		Flite 40		Flite 52		Flite 60		Flite 82		
MEXICO CITY	(CT)Lv								B8:00						P1:40	
Nuevo Laredo	(CT)Lv								12:05							
Brownsville	Lv														8:45	
Corpus Christi	Lv	6:50		6:50						1:35		6:55			10:10	
San Antonio	Lv			6:30		10:30		2:40		3:00		8:20			11:32	
Houston	Lv	6:55		6:55		10:45				5:05		10:10				
Fort Worth	Lv			8:50		1:15						10:45			1:35	
DALLAS	Lv	8:50		9:30		12:45		4:35		7:20		12:05			2:20	
Oklahoma City	Lv			10:50		2:35				8:40					3:40	
Wichita	Lv			12:03		3:48				9:53					4:53	
Kansas City	Lv			1:50		5:10				11:15					6:15	
CHICAGO	(CT)Ar	2:15		5:04		7:35		10:00		1:40					8:40	
CHICAGO		(CT)Lv	3:40	2:50	3:00	6:15	5:50	6:10	9:35	9:10	8:05	11:20	10:55	11:15	11:50	4:00
Detroit	(ET)Ar	6:20	6:37	6:58	8:52	10:11	12:12	11:50					1:35		12:09	10:50
Cleveland	Ar			6:15		11:06		10:56					2:30	2:06	6:51	12:15
Pittsburgh	Ar	7:58				9:15							3:40	3:15	8:20	10:40
Washington	Ar	11:30	8:34	7:47		12:35							5:54	5:05	6:35	11:15
New York	(ET)Ar	10:03	9:11	9:17	12:26	12:30		3:46		4:19		4:46	5:55	4:46	5:55	10:06
CHICAGO		(CT)Lv	3:40	2:50	3:00	6:15	5:50	6:10	9:35	9:10	8:05	11:20	10:55	11:15	11:50	4:00
Detroit	(ET)Ar	6:20	6:37	6:58	8:52	10:11	12:12	11:50					1:35		12:09	10:50
Cleveland	Ar			6:15		11:06		10:56					2:30	2:06	6:51	12:15
Pittsburgh	Ar	7:58				9:15							3:40	3:15	8:20	10:40
Washington	Ar	11:30	8:34	7:47		12:35							5:54	5:05	6:35	11:15
New York	(ET)Ar	10:03	9:11	9:17	12:26	12:30		3:46		4:19		4:46	5:55	4:46	5:55	10:06

CONNECTIONS EAST VIA DALLAS — FT. WORTH

WESTBOUND — Read Down				EASTBOUND — Read Up			
Flite 9	Flite 105	Flite 101	Flite 103	Flite 8	Flite 108	Flite 102	Flite 4
VIA AMERICAN AIRLINES							
6:10	11:15	6:05	11:55	11:03	3:22	12:53	12:17
8:20	1:29	7:55	1:45	9:22	1:42	10:56	10:34
4:24	10:06	3:57	9:47	12:09	4:34	2:15	
VIA BRANIFF							
6:25	1:55	6:15	11:45	9:15	4:20	11:10	
2:20	2:20	6:40	12:10	8:50		10:45	1:30
7:42	3:47	8:19	1:32	7:13		9:03	12:15
6:00	4:20	8:25	1:50	6:55		10:10	
8:27	4:32	9:04	2:17	6:30		8:20	11:32
10:12	5:54		3:39	6:55		10:10	8:45

CONNECTIONS WEST VIA DALLAS — FT. WORTH

EASTBOUND — Read Down				WESTBOUND — Read Up			
Flite 84	Flite 8	Flite 108	Flite 104	Flite 105	Flite 101	Flite 1	Flite 5
VIA AMERICAN AIRLINES							
3:15	9:00	1:00	11:00	9:10	4:55	7:50	2:35
7:25	1:50	6:15	1:45	6:27	11:12	4:22	10:43
5:30	5:17	9:42		4:54	9:39	2:49	8:18
	11:54	4:19		10:18	4:12	7:46	1:30
VIA BRANIFF							
6:30	1:55	6:15		9:15	12:28	5:4	11:50
	2:20	6:40	12:10	8:50		7:13	11:13
	7:42	3:47	8:19	7:13	11:13	3:43	9:03
	6:00	4:20	8:25	6:55	10:45	5:05	10:10
	8:27	4:32	9:04	6:30	10:30	3:00	8:20
	10:12	5:54	3:39	5:20		1:35	6:55

CONNECTIONS WEST VIA AMARILLO — DENVER

EASTBOUND — Read Down				WESTBOUND — Read Up			
TWA 4	TWA 44	TWA 2	UAL 12	TWA 45	TWA 39	UAL 17	TWA 201-139
4:00	1:00	9:00	7:30	12:55	9:50	10:51	4:55
7:00	3:20	12:05		9:45	7:25		2:20
			3:57			3:29	
3:50	11:20	8:20		3:50	12:10		9:05
VIA BRANIFF							
4:30	11:45	8:45	4:30	3:24	11:39	1:55	
6:00		10:15	10:15			7:15	
	2:02	10:15	12:10	1:00	9:15	9:15	5:10
6:45	2:32	11:37	11:37	12:30	8:45	8:45	4:40
	6:45	1:32	6:13	9:03	7:13	8:13	
	6:45	1:50	1:50	10:10	6:55	6:55	
	9:00	4:20	1:50	8:20	6:30	6:30	2:40
	8:50	4:32	6:21	6:55	5:20	5:20	
	10:12	6:54	6:39				

CONNECTIONS TO AND FROM MEXICO

NORTHBOUND — Read Down		SOUTHBOUND — Read Up	
B8:00	P1:40	B4:10	C4:15
Lv	Mexico City	(CT)Ar	B2:15
Lv	Ciudad Victoria	(CT)Ar	P9:30
C10:50		(CT)Lv	
	Monterrey	(CT)Ar	
	Brownsville	(CT)Ar	
	Nuevo Laredo	(CT)Lv	
VIA BRANIFF			
Flite 40	Flite 82	Flite 21	Flite 31
12:05		11:15	11:15
	8:45		7:26
	11:23		4:42
	4:53		4:25
	6:05		2:30
	1:30		
	2:00		
	1:55		
	6:06		
10:00	8:40		7:30

FLY THE BRANIFF WAY — FAST, PLEASANT, CONVENIENT

Connections at Nuevo Laredo and Brownsville for Mexico, Central and South America

The following INTERNATIONAL TRAVEL HINTS will help to make your trip to Mexico, whether for business or pleasure, quicker and more pleasant.

4.85 pesos per American dollar. All restrictions on the denominations of United States currency that can be taken into Mexico have been lifted.

MEXICAN ENTRANCE REQUIREMENTS: American citizens on a pleasure trip need only a Mexican Tourist Card which may be obtained upon request at any Mexican Consulate and proof of U. S. citizenship. Children under 15 years of age are not required to have a tourist card.

CUSTOMS ALLOWANCE: MEXICAN: Each person is permitted to take into Mexico, 100 cigars or 20 packages of cigarettes or a pound of tobacco; wearing apparel, luggage and articles of personal use. AMERICAN: Residents of the United States of America may enter articles purchased in Mexico duty free, the total value of which does not exceed \$100.00 U. S. currency, for each person.

Citizens of the United States of America traveling into Mexico on business trips must have a valid U.S. Passport and a Mexican Visa. Also, a bond of 500 Mexican pesos (\$103.00 U.S. currency) is also required.

VACCINATIONS: Health authorities for both countries require a smallpox vaccination certificate or scar.

MONEY: The national currency of Mexico is the peso and is used as the Mexican dollar. The current rate of exchange is approximately

ONE WAY FARES

(Round Trip Fares Are Double The One Way Fares)

	AMARILLO	AUSTIN	BROWNSVILLE	BURLINGTON	CHICAGO	COLORADO SPRINGS	CORPUS CHRISTI	DALLAS	DENVER	FT. SMITH	FT. WORTH	GALVESTON	HOUSTON	KANSAS CITY	LAREDO	LITTLE ROCK	LUBBOCK	MEMPHIS	MEXICO CITY	MOLINE	MUSKOGEE	NEW LAREDO	OKLAHOMA CITY	PUEBLO	SAN ANTONIO	TOPEKA	TULSA	WACO	WICHITA	WICHITA FALLS
AMARILLO	—	23.25	38.40	—	14.30	32.40	14.75	17.60	21.30	14.75	27.90	26.05	—	32.90	27.35	5.10	33.05	63.50	—	18.05	32.90	10.80	12.30	26.05	—	15.95	19.00	—	9.35	
AUSTIN	23.25	—	15.90	43.05	50.10	37.55	9.90	8.50	40.85	—	8.50	8.85	7.00	32.95	10.40	—	21.55	—	41.00	45.85	—	10.40	16.85	35.55	3.55	30.35	22.00	4.75	24.10	14.30
BROWNSVILLE	38.40	15.90	—	58.20	64.20	52.70	6.00	23.65	56.00	—	23.65	16.45	14.60	48.10	—	—	36.70	—	61.00	—	—	32.00	50.70	12.35	45.50	37.15	20.05			