

Domestic and International Schedules

August, 1952

it's



BRANIFF

INTERNATIONAL AIRWAYS

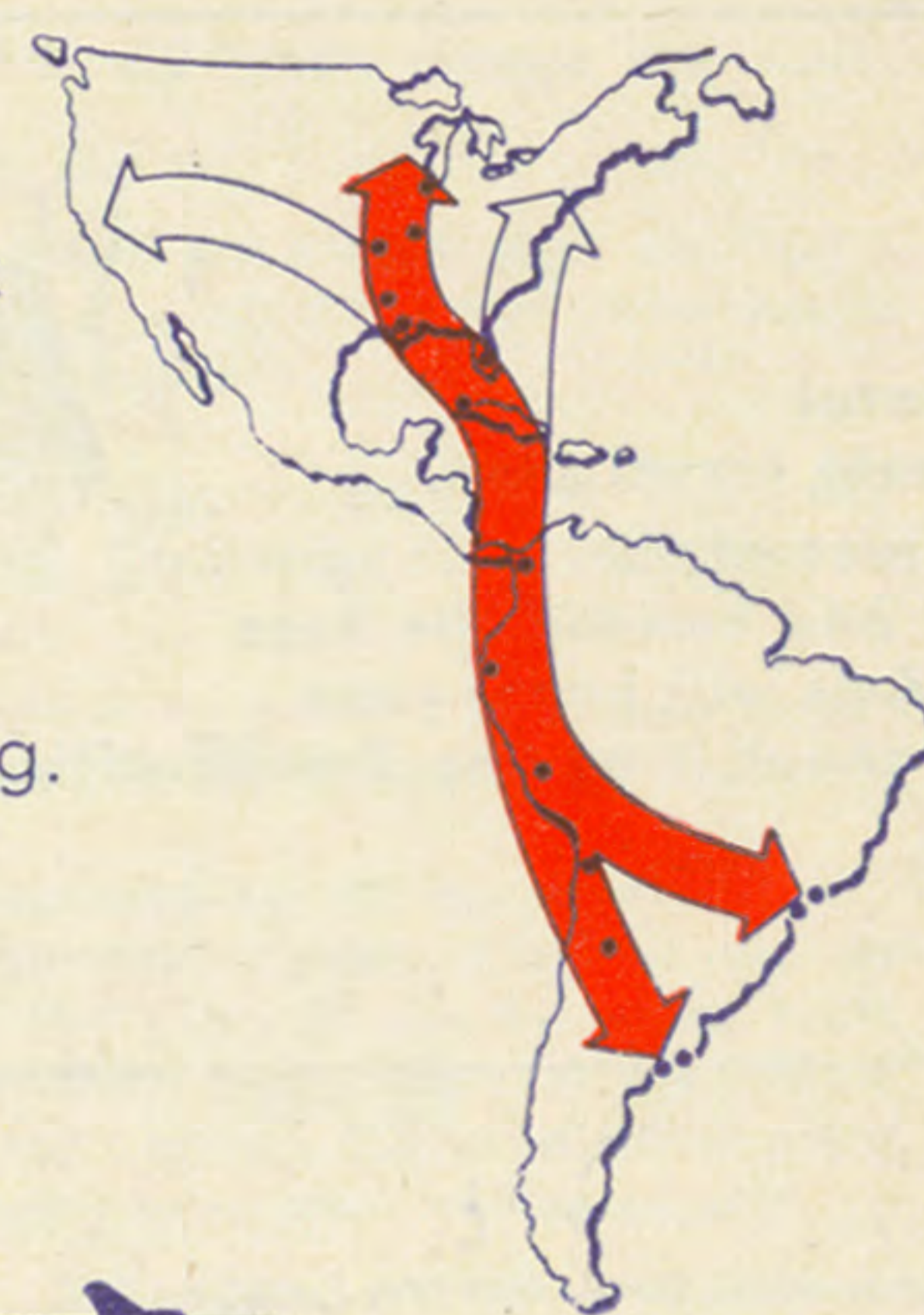


Fly Braniff to a shopper's field day in Lima. It's an important stop along South America's 5,000-mile bargain counter!



your **south american** guide is free!

And so informative! It's Braniff's new guidebook that tells you what to do about money, cameras, food, shopping, guides, languages, hotels—everything. It's yours for the asking! Write today for your complimentary copy



it's **BRANIFF**

INTERNATIONAL AIRWAYS, LOVE FIELD, DALLAS, TEX.

it's 
BRANIFF
INTERNATIONAL AIRWAYS



Fly Braniff to a shopper's field day in Lima. It's an important stop along South America's 5,000-mile bargain counter!

Play in the surf on Rio's world-famous Copacabana Beach.

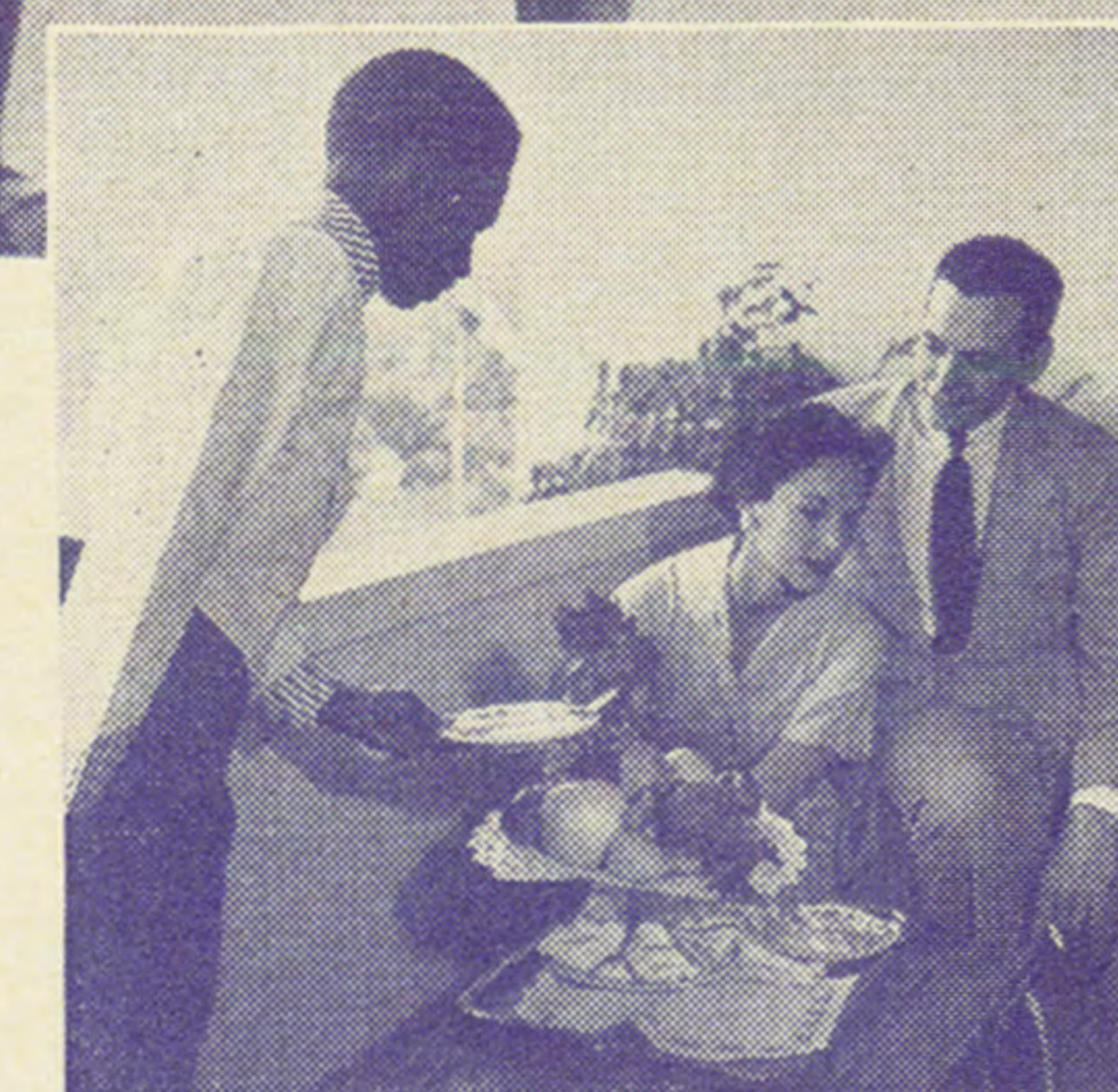


South America's

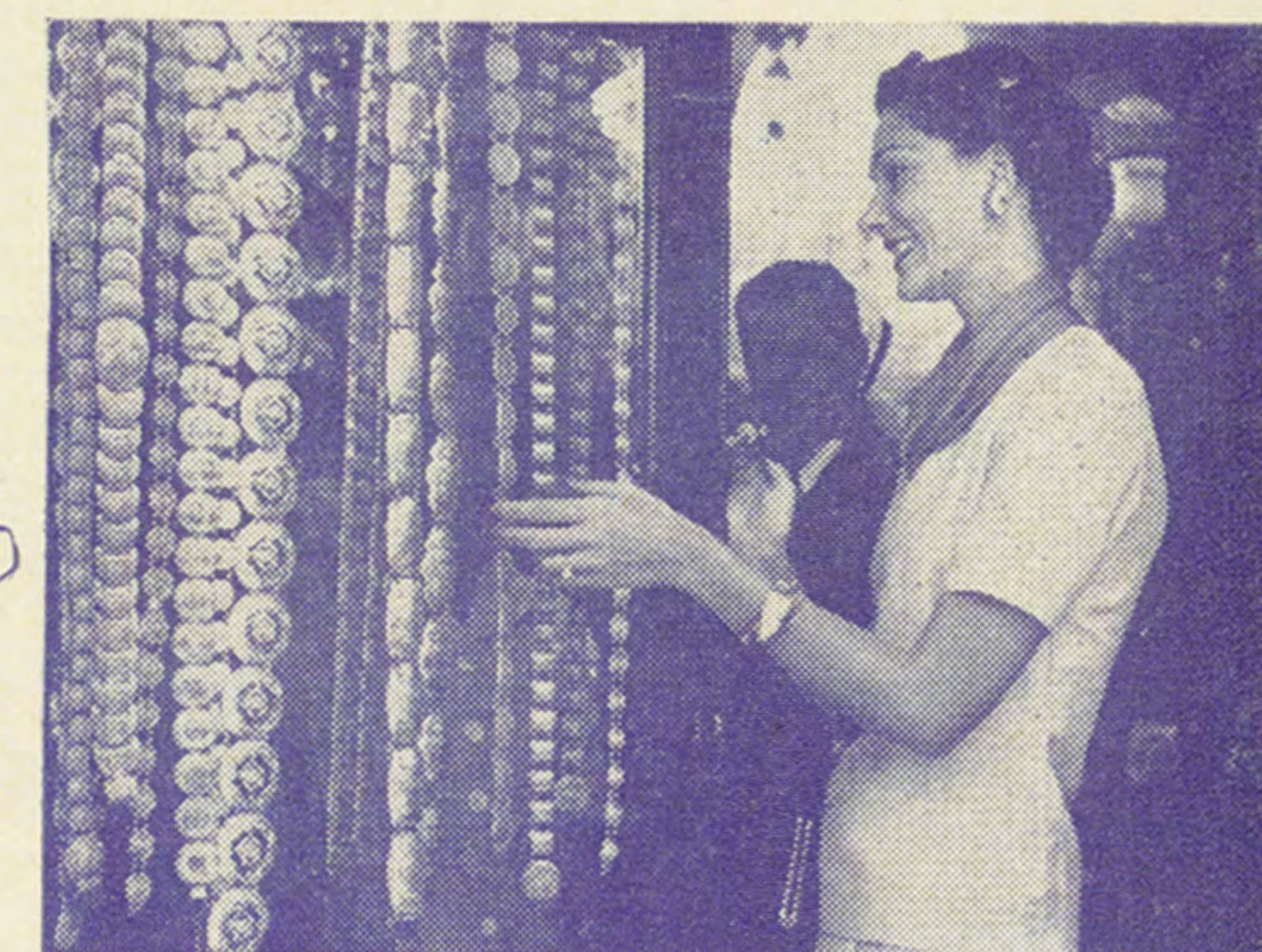
fabuloso
when

it's
BRANIFF

Could be Rio's soft, rhythmic sambas (the beat never stops). Melt-in-your-mouth steaks that make Buenos Aires world famous. So much gleaming silver practically all Lima shines! A thousand things prompt sophisticated travelers to sing Latin America's praises—and Braniff's luxurious service compliments them all! Your choice of El Conquistador, plush DC-6 sleeper planes at regular fares—or El Intercontinental, fine 4-engine tourist liners at greatest savings yet. Call your travel agent, or Braniff International Airways.



Dine on the veranda of the magnificent new Hotel El Panama.



Shop in Lima, the world's greatest silver capital.



BRANIFF INTERNATIONAL AIRWAYS, United States scheduled airline with over two billion passenger miles of safe flying experience throughout the Americas.

Braniff's service means "extra touches" all along the way.



FOR COMPLETE INTERNATIONAL SCHEDULES, PLEASE SEE PAGES 5 AND 6
PRINCIPAL EASTERN POINTS AND LATIN AMERICA

Read Down

EAL ★731W Daily	NAL ★908 Daily	EAL ★605- ★603 Daily	NAL ★405 Daily	EAL ★601 Daily	NAL ★401 Daily	NAL ★405 Daily	EAL ★107 Daily	EAL ★701 Daily	Connecting Carrier	EAL ★614 Daily	NAL ★400 Daily	EAL 564- ★602 Daily	NAL ★907 Daily	EAL ★100- ★706 Daily	NAL ★108 Daily	EAL ★702 Daily	EAL- ★512 Daily
11 59 1 00	9 15 12 25 1 24	8 00 10 00	9 45	2 00	2 45	11 15	10 00	8 35 9 35	Lv. BOSTON (EST) Ar Lv. NEW YORK (EST) Ar Lv. CHICAGO (CST) Ar Lv. DETROIT (EST) Ar Lv. CLEVELAND Ar Lv. PITTSBURGH Ar Lv. WASHINGTON, D.C. (EST) Ar Lv. NEW ORLEANS (CST) Ar Lv. TAMPA (EST) Ar Ar. MIAMI	12 30	12 30	2 16 12 30	10 45 9 20	1 50 2 15 1 10	7 00	10 30 9 27	8 44
7 59	403 Mo. 603 We.-Su.	603 We.-Su.	403 Fr.	603 Tu-Th-Sa	601 We.	605 Su.	605 Su.	4 40	BRANIFF AIRWAYS	604 Tu.	600 We-Fr-Su	602 Sa.	600 Tu.-Sa.	400 Th.	600 Tu.-Sa.	400 Mo.	
3 20 4 35 5 10 9 54 10 35	2 25 6 50 12 40 6 15 6 55	3 20 4 35 5 10 9 54 10 35	2 25 6 50 12 40 6 15 6 55	* 8 00 12 37 1 20	8 00 8 58 9 40 1 50 2 30	8 00 8 58 9 40 1 50 2 30	5 35 6 05 9 10 10 00	5 35 6 05 9 10 10 00	Lv. MIAMI (EST) (75°) Lv Ar. HAVANA Lv Ar. HAVANA Lv Ar. PANAMA CITY BALBOA, C.Z. Lv Ar. PANAMA CITY BALBOA, C.Z. Ar Ar. GUAYAQUIL Lv Lv. GUAYAQUIL Lv Ar. LIMA (75°) Lv Lv. LA PAZ (60°) Lv Ar. ASUNCION (60°) Ar Ar. ASUNCION (60°) Ar Ar. SAO PAULO (45°) Lv Ar. SAO PAULO (45°) Ar Ar. RIO de JANEIRO Lv Ar. MONTEVIDEO Lv Ar. BUENOS AIRES (45°) Lv	6 18 5 20 4 50 12 45 12 05	6 17 5 20 4 50 1 45 1 05	6 18 5 20 4 50 12 45 12 05	10 10 8 55 8 25 3 50 3 05	10 10 8 55 8 25 3 50 3 05	10 10 11 15 10 45 6 50 6 10 3 30 9 58 9 18	10 10 8 55 8 25 3 50 3 05	
Tourist Liner 11 13 PM Tu.	Tourist Liner 7 00 7 50 9 00 PM We.-Su.	Tourist Liner 11 13 PM Sa.	Tourist Liner 7 00 7 50 9 00 PM We-Fr-Su	9 15 PM Th.	9 00 PM Mo.	9 00 PM Mo.	9 00 PM Mo.			9 40 8 50 7 40 AM Mo.	*11 10 10 20 9 10 AM Tu-Th-Sa	9 00 8 30 7 15 5 35 4 55 AM Fr.	9 00 8 30 7 15 5 35 4 55 AM Fr.	11 10 10 20 9 10 AM We	11 10 10 20 9 10 AM Tu.-Sa.	11 10 10 20 9 10 AM Su.	11 10 10 20 9 10 AM Su.

Read Up

Read Down

AA ★8- ★908 Daily	AA ★910 Daily	UAL ★630 Daily	UAL ★638-604 Daily	AA ★900- ★908 Daily	AA ★910 Daily	Connecting Carrier	UAL ★635 Daily	AA ★43 Daily	AA ★911 Daily	AA ★907 Daily	UAL ★611 Daily	UAL ★635 Daily	AA ★917 Daily	AA ★7-9 Daily
11 45 12 01	8 50	8 15	9 25 8 20	12 20 12 01	8 50	Lv. SAN FRANCISCO (PST) Ar Lv. LOS ANGELES (PST) Ar Lv. SAN DIEGO (PST) Ar Lv. SEATTLE (PST) Ar Lv. PORTLAND (PST) Ar Lv. PHOENIX (MST) Ar Ar. DENVER (MST) Lv	5 35	5 10	5 45	10 25	2 45	5 50 4 35	10 45	9 05 10 35
6 31	6 35	1 15	3 25 6 45 9 30	7 05	6 35	BRANIFF AIRWAYS 044-★902 Daily	9 03 7 17 4 50	1 25	1 30	1 25	9 03 7 17 4 50	6 00	6 00	6 00
403 Mo. 603 We.-Su.	603 We.-Su.	603 Tu-Th-Sa	603 Tu-Th-Sa	601 We.	605 Su.	BRANIFF AIRWAYS	604 Tu.	600 We-Fr-Su	602 Sa.	400 Th.	600 Tu.-Sa.	400 Mo.	400 Mo.	
7 00 8 20 8 45 2 25 3 20 4 35 5 10 9 54 10 35	2 25 6 50 12 40 6 15 6 55	12 35 1 45 2 15 6 55 8 00	12 35 1 45 2 15 6 55 8 00	12 35 1 45 2 15 6 55 8 00	12 35 1 45 2 15 6 55 8 00	Lv. DALLAS (CST) Ar Ar. HOUSTON (CST) Ar Lv. HOUSTON (CST) Ar Ar. MIAMI (EST) (75°) Ar Lv. MIAMI (EST) (75°) Ar Ar. HAVANA Lv Ar. HAVANA Lv Ar. PANAMA CITY BALBOA, C.Z. Lv Ar. PANAMA CITY BALBOA, C.Z. Ar Ar. GUAYAQUIL Lv Lv. GUAYAQUIL Lv Ar. LIMA (75°) Lv Lv. LA PAZ (60°) Lv Ar. ASUNCION (60°) Ar Ar. ASUNCION (60°) Ar Ar. SAO PAULO (45°) Lv Ar. SAO PAULO (45°) Ar Ar. RIO de JANEIRO Lv Ar. MONTEVIDEO Lv Ar. BUENOS AIRES (45°) Lv	11 40 10 30 10 10 10 10 7 30	11 40 10 30 10 10 10 10 7 30	11 40 10 30 10 10 10 10 7 30	4 18 3 00 2 40 2 40	4 18 3 00 2 40 2 40	11 10 10 45 6 50 6 10 3 30 9 58 9 18	11 10 10 45 6 50 6 10 3 30 9 58 9 18	
Tourist Liner 11 13 PM Tu.	Tourist Liner 7 00 7 50 9 00 PM We.-Su.	Tourist Liner 11 13 PM Sa.	Tourist Liner 7 00 7 50 9 00 PM We-Fr-Su	9 15 PM Th.	9 00 PM Mo.		9 40 8 50 7 40 AM Mo	*11 10 10 20 9 10 AM Tu-Th-Sa	9 00 8 30 7 15 5 35 4 55 AM Fr.	9 00 8 30 7 15 5 35 4 55 AM Fr.	11 10 10 20 9 10 AM We	11 10 10 20 9 10 AM Tu.-Sa.	11 10 10 20 9 10 AM Su.	11 10 10 20 9 10 AM Su.

Read Up

Local standard time is shown at all points.
*—Tocumen Airport serves Panama, R. P. and Balboa, Cristobal, Ancon, C. Z.
#—No local traffic carried between Miami and Havana or Dallas/Houston and Miami.
†—No local traffic carried between Rio de Janeiro and Sao Paulo.
*—Connecting service to Montevideo is available via either Rio de Janeiro or Buenos Aires.

AA—American Airlines.
BNF—Braniff Airways.
CAP—Capital Airlines.
DAL—Delta Air Lines.
EAL—Eastern Air Lines.
NAL—National Airlines.

TWA—Trans World Airlines.
UAL—United Air Lines.
*—Complimentary meal.
*—Snack service.
D—Full course dinner served at Miami through passengers while on ground.

—DC-6.
—DC-4.
—DC-4 (Tourist Liner).
—DC-3.
★—Constellation.
AM—Light Face Type.
PM—Bold Face Type.



Complete
AIR TRANSPORTATION
for the
Western Hemisphere

- ★ PASSENGERS
- ★ AIR EXPRESS
- ★ AIR FREIGHT
- ★ AIR MAIL

— Braniff International Airways
— Connecting Airlines
— Interchange

BRANIFF AIRWAYS OFFICES

GENERAL OFFICES: LOVE FIELD, DALLAS, TEXAS DIXON 1721

Table with columns: City, Address, Phone, Miles From City, Ground Fare. Lists various cities and their respective office locations and fares.

AIRPLANES: U. S. schedules on pages 5 and 6 shown in blue on red background are operated with 52-passenger DC-6 Braniff Skyliners.

HOURS OF ARRIVAL AND DEPARTURE: Time shown is local standard time. A.M. in light face, P.M. in dark face.

CHECK IN FOR FLIGHTS: Our passengers expect on-time performance. Therefore, to maintain our enviable on-time record, we reserve the right to cancel the reservation of any passenger who fails to present himself at the airport ticket office at least ten minutes prior to the scheduled departure time of a domestic flight.

BAGGAGE INFORMATION: The free baggage allowance on all flights within the United States and Canada is 40 pounds. International passengers are allowed 66 pounds.

Should baggage or personal property be lost, damaged or delayed in delivery, our liability is limited to \$100 for each ticket, unless extra value charges are paid before departure, or when checking articles for temporary storage.

When you leave the airplane at your destination, please make certain that you remove your hand parcels, briefcase, camera, etc.

GROUND TRANSPORTATION: is provided at all stations served by Braniff by reliable operators not under the control of Braniff, at reasonable rates, and for information purposes only such rates prevailing on the effective date of this folder are shown on this page.

HOTEL RESERVATIONS: Any Braniff office will gladly arrange your hotel reservations in any city served by the airline.

MEAL SERVICE: Delicious complimentary meals are served aloft on flights at regular meal hours. In addition, liquids are available between meal hours. Snack service is provided on "El Intercontinental" flights.

INSURANCE: Domestic airline trip insurance may be purchased from any Braniff Airways ticket office in the United States. The charge for a \$5000 policy, good on any certified airline, is 25 cents.

For foreign travel, our insurance company extends its policies purchased in the United States over any portion of our foreign operations at comparable rates.

CHILDREN: One child, under two years of age and not occupying a seat will be carried free with each accompanying passenger twelve years of age or over on the routes of Braniff Airways.

FAMILY FARES: On Monday, Tuesday and Wednesday your wife and children, 21 years of age and under, travel half fare when you buy one regular fare ticket to any point served by Braniff in the United States.

SCHEDULES AND FARES: All schedules and fares shown herein are for information only, and are subject to change and correction without notice. Official Braniff Airways, Inc., fares for passage between points within the U.S.A. are published in Local and Joint Passenger Tariff No. PF-4, A.T.B. No. 12, C.A.B. No. 18, M. F. Redfern, Agent, which is on file with the Civil Aeronautics Board.

* - Ground Fares currently charged by local transportation operator. X - Minimum \$1.00 per trip. - Two or more passengers \$1.00 each. Ground Transportation is provided at all stations served by Braniff by reliable operators not under the control of Braniff, at reasonable rates. For information purposes only.

Above Diagonal Line - Round Trip

Below Diagonal Line - One Way

Large fare matrix table with columns for cities (Amarillo, Austin, Brownsville, Burlington, Chicago, Colorado Springs, Corpus Christi, Dallas, Denver, Fort Smith, Fort Worth, Galveston, Houston, Kansas City, Laredo, Little Rock, Lubbock, Memphis, Miami, Moline, Muskogee, Oklahoma City, Ponca City, San Antonio, Topeka, Tulsa, Waco, Wichita, Wichita Falls) and rows for the same cities. Includes a date stamp 'CORRECTED TO APRIL 27, 1952'.

15% U. S. Government Tax to be added to these fares in accordance with Section 302 of the U. S. Revenue Act of 1943, effective April 4, 1944. All fares and schedules shown herein are for information only, and are subject to change and correction without notice.

Air Travel - Car Rental Plan



BRANIFF cooperates with two fine rental services to bring you an ideal plane-auto travel plan.

Rent a car in advance. You'll be met at the airport at your destination like a VIP and handed the keys to a smart, new car. Both Hertz and Avis will honor your Braniff Credit Card - no deposit, ask about it at any Braniff office.



Fares shown in U. S. Currency. Round Trips - Approximately Double One-Way Fares Less 10%

Table with columns for TO (cities) and FROM (cities). Lists various cities and their corresponding fares for round trips and one-way flights.

All fares shown for information purposes only and are subject to correction and change without notice. Any taxes imposed by governmental authority are in addition to fares shown above.