

Domestic and International Schedules  
February, 1953

it's



# BRANIFF

INTERNATIONAL AIRWAYS





Domestic and International Schedules  
February, 1953

it's



# BRANIFF

INTERNATIONAL AIRWAYS



take  
the  
family



at half fare! Every Monday, Tuesday and Wednesday, Dad's regular fare ticket lets him take Mother and children (under 22) along at half price. Or if Dad can't go, Mother can take the children (under 22) at half fare when she buys a regular ticket. Same deal is good for the return trip, too — first part of the week.

our  
free  
guidebook

"South America at its best by Braniff," tells all about the world's most glamorous trip. Passports, languages, money, hotels, foods, cameras, where to go, what to do. It's yours for the asking. Write for your complimentary copy!



it's



# BRANIFF

INTERNATIONAL AIRWAYS  
Love Field • Dallas, Texas

Join ALEXANDER BOTTS, legendary tractor salesman on his scientific

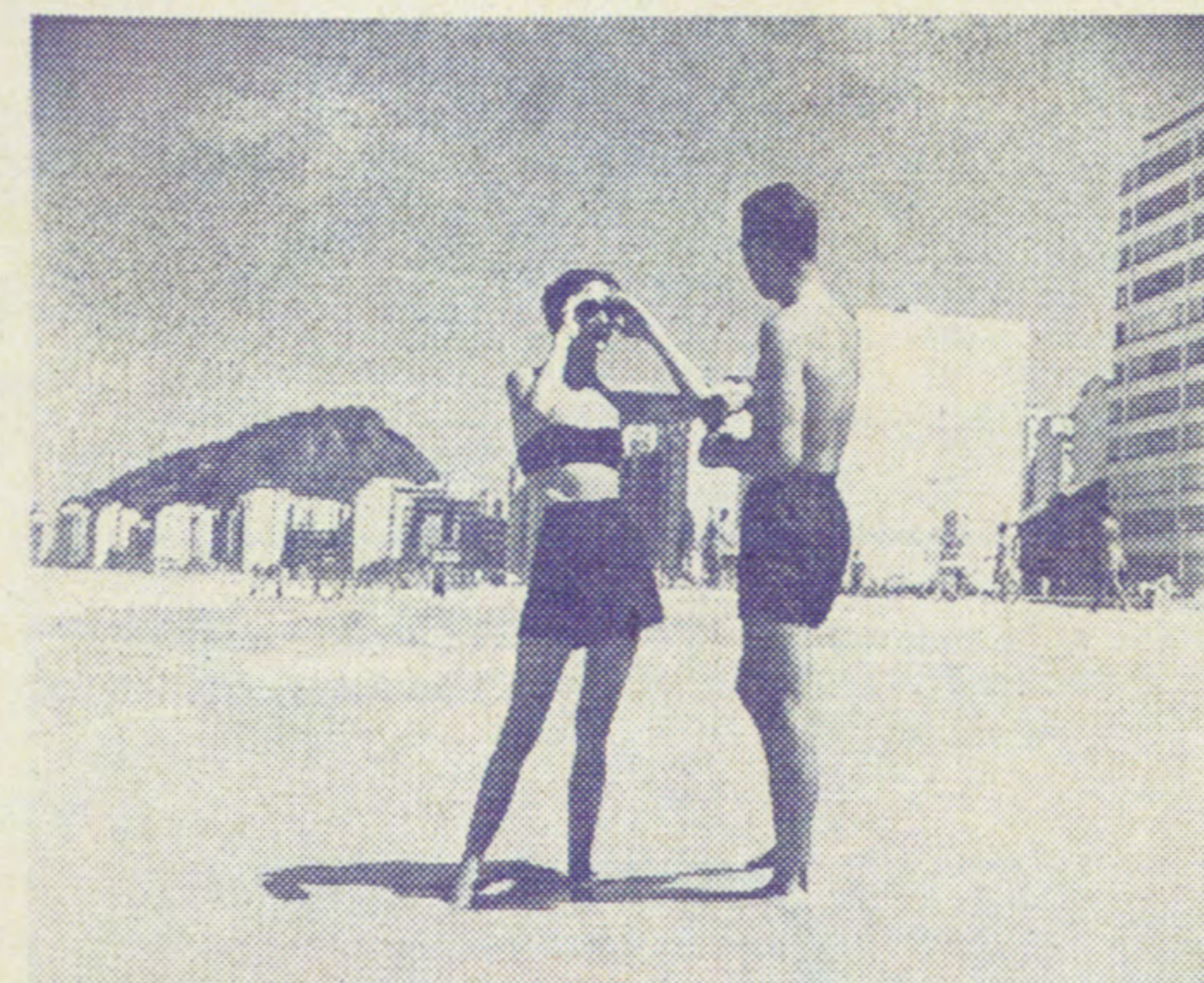
study of the siesta in

# south america

A 28-day Braniff Tour of  
6 Latin American Countries



Sky Luxury! Enjoy companionship, cocktails and meals above the Andes on your way to South America in El Conquistador, Braniff's royally comfortable DC-6.



Rio Fun! Play in the sun and splash in the surf at world-famous Copacabana beach in magnificent Rio de Janeiro, one of the dozen cities you'll visit.

You're invited to accompany William Hazlett Upson, creator of the famous Earthworm Tractor salesman, Alexander Botts, on a once-in-a-lifetime flight to South America from Miami on February 21.

You'll enjoy each of the 28 days you travel through Panama, Peru, Chile, Argentina, Uruguay, and Brazil. You'll leap at the pull of a Pacific Black Marlin, rise and shout at the bullfights in Lima, celebrate in the cosmopolitan night life of Buenos Aires.

And you'll learn first hand about South American business opportunities and rich export markets. Arrangements have been made for you to meet important people in business, industry and agriculture.

Yet, there are days and days of pleasure, nights of excitement, and three whole week-ends of fascinating Latin America! It's a trip you'll never forget. So don't put down this timetable until you've written for the FREE booklet, "See South America with Alexander Botts."

# it's BRANIFF

INTERNATIONAL AIRWAYS  
Love Field • Dallas, Texas



# Ticket Offices — Telephones — Ground Services

GENERAL OFFICES — LOVE FIELD, DALLAS, TEXAS, DIXON 1721

City	Address	Phone	Miles From City	Ground Fare*
Aberdeen, S. D.	Municipal Airport	4835	3 1/2 E	\$.75
Amarillo, Tex.	Amarillo Hotel	2-4343		
	Amarillo Air Terminal	9373	10 NE	1.15
Asuncion, Paraguay	Independencia Nacional 289	9258		
Austin, Minn.	Asuncion Airport		9 NE	1.00
Austin, Tex.	Municipal Airport	7-3561	2 E	
	Commodore Perry Hotel	8-6411		
	Airport	5-5461	4 NE	.85
Balboa, C. Z.	Avenida Tivoli 18	2-0729		
	Hotel El Panama	3-4726		
	Panama, R. P.			
	Tocumen National Airport		12 NE	1.50
Bismarck, N. D.	Grand Pacific Hotel	405		
	Municipal Airport		3 SE	.50
Boston, Mass.	60 State Street	CApital 7-7133	4 E	1.00
Brownsville, Tex.	Airport	2-7431	5 E	.75x
Buenos Aires, Argentina	Viamonte 557	32-8461		
	Ministro Pistarini Airport	290-0173	19 SW	1.25
Burlington, Iowa	Airport	619	2 1/2 SE	1.05
Cedar Falls, Iowa	Waterloo, Iowa	Enterprise 15700		
	Waterloo Airport		3 E	1.00
Chicago, Ill.	Hotel Palmer House	FR 2-8900		
	Conrad Hilton Hotel	WA 2-4400		
	Midway Airport	PO-7-3423	12 SW	1.25
Evanston, Ill.	Church and Orrington Sts.	DAvis 8-6550	22 S	2.50
Clinton, Iowa	Municipal Airport	2123	8 W	1.25
Colon, R. P.	No. 10, 113-10th St.	Colon 779	17	1.00
Colorado Springs, Colo.	133 E. Pikes Peak Ave.	Ma. 892		
	Peterson Field	Main 84	7 SE	1.35+
Corpus Christi, Tex.	Driscoll Hotel	4-5558		
	Cliff Maus Airport	3-8431	4 1/2 SW	.85
Dallas, Tex.	Adolphus Hotel	DI-7511		
	Love Field	DI-1721	7 1/2 NW	1.00
Denver, Colo.	Albany Hotel	ALpine 1431		
	Stapleton Airfield	East 7761	6 1/2 NE	1.00
Des Moines, Iowa	416 Sixth Avenue	2-0233		
	Municipal Airport		4 1/2 SW	1.00
Detroit, Michigan	1342 Book Building	WO-5-4930	32 W	1.50
Dubuque, Iowa	551 Main			
	Municipal Airport	3-8288	6 1/2 SW	1.50
Ft. Dodge, Iowa	Municipal Airport	Walnut 5204	3 1/2 NNW	1.00
Ft. Smith, Ark.	Municipal Airport	9156	4 1/2 SE	.75
Ft. Worth, Tex.	Texas Hotel	FO-7411		
	Meacham Field	NO-5431	5 1/2 NW	1.00
Galveston, Tex.	Jean Lafitte Hotel	2-9606	4 1/2 SW	.90
Gladewater, Texas	Longview, Tex.	Longview 2377		
	Gregg County Airport		22 SE	2.00
Guayaquil, Ecuador	Pedro Carbo 411	1269		
	Simon Bolivar Airport	1183	3 N	.60
Havana, Cuba	Prado 204	A-2985		
	Rancho Boyeros		11 S	1.00
Houston, Tex.	Rice Hotel	CA-9871		
	Airport	OL-2687	10 SE	1.15
Huron, S. D.	356 Dakota Ave. So.	2910		
	W. W. Howes Airport		2 N	.50
Joplin, Mo.	Hotel Connor			
	Municipal Airport	110	4 1/2 N	.75
Kansas City, Mo.	Muehlebach Hotel	BA-8600		
	Airport	NO-4288	1 1/2 NW	.55
La Paz, Bolivia	Ayacucho 160	6458		
	El Alto Airport	5905	5	
Laredo, Tex.	Country Club Road	3-3645	3 1/2 NE	.75
Lima, Peru	Nicolas de Pierola			
	Colmena Derecha 305	41950		
	Limatambo Field	59060	5 S	.70
Lincoln, Nebr.	204 So. 13th			
	Municipal Airport	2-5160	7 NW	1.15
Little Rock, Ark.	Grady-Manning Hotel	4-6465		
	Adams Field	27-9207	2 1/2 SE	.70
Longview-Kilgore, Tex.	Gregg County Airport	2377	9 SE	1.50
Los Angeles, Cal.	900 Wilshire Blvd	MA-6-5386	14 SW	1.25
Lubbock, Tex.	Hilton Hotel	5-8506		
	Lubbock Municipal Airport	7428	5 N	.85
Mason City, Iowa	Hanford Hotel	654		
	Municipal Airport		8 W	1.25

City	Address	Phone	Miles From City	Ground Fare*
McAlester, Okla.	Municipal Airport	644	3 S	1.00
Memphis, Tenn.	Peabody Hotel	5-7436		
	Municipal Airport	9-1569	9 SE	\$1.00
Mexico City	Paseo de la Reforma	18-66-72		
	No. 1	36-21-54	3 1/2 S	.50
Miami, Florida	35 N. E. 3rd Ave	82-4743		
	Miami International Airport	64-1549	7 W	.85
Milwaukee, Wis.	General Mitchell Airport	Humbolt 3-8480	6 S	.75
Minneapolis, Minn.	636 Marquette Ave	DUPont 8366		
	Nicollet Hotel Lobby			
	Wold-Chamberlain Airport		9 SE	1.00
Minot, N. D.	9 Central Avenue East	30-211		
	Municipal Airport		1 1/2 NE	.50
Mitchell, S. D.	Municipal Airport	8283	5 N	1.50++
Moline, Ill.	Airport	4480	3 1/2 S	.75
Montevideo, Uruguay	Bartolome Mitre 1324	9-5789	12	.60
Muskogee, Okla.	Davis Field	2701	8 S	1.00
New Orleans, La.	724 Common St.	CAnal 9777		
	Moisant Airport		11 NW	1.25
New York, N. Y.	630 Fifth Ave.			
	South Mezzannie	Plaza 7-0065		1.25
Norfolk, Neb.	Municipal Airport	640	3 S	1.50
Oklahoma, City, Okla.	Liberty National Bank Bldg	REgent 63525		
	Municipal Airport	62-4425	9 SW	1.25
Omaha, Nebr.	214 S. Fifteenth	WEbster 4900		
	Municipal Airport		5 NE	.85
Ottumwa, Iowa	107 E. 2nd	7142		
	Municipal Airport		8 N	Meter
Panama City, R. P.	Avenida Tivoli 18	2-0729		
	Hotel El Panama	3-4726		
	Tocumen National Airport		12 NE	1.25
Paris, Texas	Cox AAF Airport	76	6 1/2 SE	1.00
Ponca City, Okla.	Municipal Airport	4302	2 1/2 NW	.75
Quincy, Ill.	Municipal Airport	4070	12 E	1.50
Quito, Ecuador	Hotel Majestic			
	Garcia Moreno y Chile	12126	6	.75
	Rua Santa Luzia 776-A	52-1826		
Rio de Janeiro, Brazil	Galeao Airport		6	1.75
Rochester, Minn.	122 First Avenue S. W.	4591		
	Municipal Airport		1 1/2 S E	.60
Rockford, Ill.	Lafayette Hotel	5-0661		
	Greater Rockford Airport		4 S	1.15
San Antonio, Tex.	Gunter Hotel	F-3381		
	Alamo Field	T-3351	8 1/2 N	1.25
San Francisco, Cal.	260 Stockton St.	YU-2-5640	13 SE	1.25
Santiago, Chile	Augustinas 1118	8-0945		
Sao Paulo, Brazil	Rua 24 de Maio 276	34-2353		
	4° Andar, Sala 44	35-7197		
Shreveport, La.	Cumbica Airport		15 NE	2.00
	Washington-Youree Hotel	2-0302		
	Greater Shreveport Municipal		8 1/2 SW	1.25
Sioux City, Iowa	Martin Hotel	8-5553		
	Municipal Airport		11 1/2 S	1.40
Sioux Falls, S. D.	Carpenter Hotel	4-6051		
	Municipal Airport		3 NW	Meter
St. Joseph, Mo.	Robidoux Hotel	2-6066		
	Rosecrans Field		3 1/2 NW	Meter
St. Louis, Mo.	Jefferson Hotel	GArdfield 6280		
	Lambert Field		15 NW	1.40
St. Paul, Minn.	St. Paul Hotel	NEstor 2751		
	Wold Chamberlain Airport		9 SE	1.50
Texarkana, Tex.-Ark	Municipal Airport	2-6562	4 NE	Meter
Topeka, Kan.	Jayhawk Hotel	2-0535		
	Municipal Airport	4-0479	3 NE	.75
Tulsa, Okla.	112 East Fifth	8-4424		
	Municipal Airport	8-3634	7 NE	1.15
Tyler, Tex.	People's Bank Lobby	2-4357		
	Pounds Field		6 W	1.00
Waco, Tex.	Municipal Airport	4-3561	7 1/2 NW	1.00
Washington, D. C.	1519 K Street N. W.	ME-3054	4 S	.90
Waterloo, Iowa	Hotel Russell Lamson	6821		
	Municipal Airport		6 NW	1.00
Watertown, S. D.	Municipal Airport	4038	4 1/2 W	.75
Wichita, Kan.	Allis Hotel	6-6605	5 1/2 SE	1.00
Wichita Falls, Tex.	Marchman Hotel	4197		
	Airport	2-4520	5 1/2 NE	.75

\*—Ground Fares currently charged by local transportation operator.  
 X—Minimum \$1.00 per trip. +—Two or more passengers \$1.00 each.  
 ++—Minimum \$1.50 per trip, with additional charge of 25 cents for each passenger over two.

☛—Car rental service is available in cities indicated.  
 Ground Transportation is provided at all stations served by Braniff by reliable operators not under the control of Braniff, at reasonable rates. For information purposes only.





MINNEAPOLIS-ST. PAUL — CHICAGO — KANSAS CITY — ST. LOUIS — TULSA  
DALLAS — HOUSTON — NEW ORLEANS — SAN ANTONIO — SOUTH TEXAS

READ DOWN

DOMESTIC SOUTHBOUND SCHEDULES

EFFECTIVE FEBRUARY 1, 1953

Table with columns for EQUIPMENT: FLIGHT NUMBERS (DC-4 403, Convair 23, Convair 11, DC-3 19, DC-6 25, DC-6 21, DC-4 15, DC-3 159, DC-3 123, DC-6 603, Convair 395, DC-6 31, DC-4 35, DC-3 39, DC-3 141, DC-3 171, DC-3 191, Convair 351, DC-3 57, Convair 51, DC-4 53, DC-6 55) and rows for cities: MINNEAPOLIS-ST. PAUL (CST), CHICAGO, DES MOINES, OMAHA, KANSAS CITY, ST. LOUIS, WICHITA, OKLAHOMA CITY, TULSA, DALLAS, FORT WORTH, HOUSTON, SAN ANTONIO, BROWNSVILLE, NEW ORLEANS.

Lv—Leave Ar—Arrive. AM—Light Face Type. \*—Complimentary Meal. U. S. Mail Carried On All Flights. PM—Bold Face Type. ⚡—Snack Service. CST—Central Standard Time. MST—Mountain Standard Time. All flights daily unless otherwise indicated. h—Via connecting flight at Houston.

FOR BRANIFF LATIN AMERICAN SCHEDULES PLEASE SEE PAGES 12 AND 13

MINNEAPOLIS-ST. PAUL — CHICAGO — KANSAS CITY — ST. LOUIS — TULSA  
DALLAS — HOUSTON — NEW ORLEANS — SAN ANTONIO — SOUTH TEXAS

READ DOWN

DOMESTIC SOUTHBOUND SCHEDULES

EFFECTIVE FEBRUARY 1, 1953

Table with columns for EQUIPMENT: FLIGHT NUMBERS (DC-4 903, DC-3 73, DC-3 69, Convair 968, DC-3 139, DC-3 143, Convair 357, DC-3 157, DC-3 197, DC-6 61, DC-4 65, DC-3 63, DC-3 109, DC-3 145, DC-3 183, DC-3 175, DC-6 41, DC-3 107, Convair 319, C-47 801, C-54 851) and rows for cities: MINNEAPOLIS-ST. PAUL (CST), CHICAGO, DES MOINES, OMAHA, KANSAS CITY, ST. LOUIS, WICHITA, OKLAHOMA CITY, TULSA, DALLAS, FORT WORTH, HOUSTON, SAN ANTONIO, BROWNSVILLE, NEW ORLEANS.

⚡—Limousine service is available between Love Field, Dallas and downtown Ft. Worth at the charge of \$1.00 including tax. This service is operated by an independent operator not under the control of Braniff Airways. ⚡—The San Antonio - Corpus Christi portion of flight 35 and the San Antonio - Brownsville portion of flight 53 operate with DC-3 equipment. The aircraft shown to be used on schedules is subject to substitution of other aircraft as availability and service requirements may demand.

FOR BRANIFF LATIN AMERICAN SCHEDULES PLEASE SEE PAGES 12 AND 13



SOUTH TEXAS — SAN ANTONIO — NEW ORLEANS — HOUSTON — DALLAS  
TULSA — ST. LOUIS — KANSAS CITY — CHICAGO — ST. PAUL - MINNEAPOLIS

READ DOWN DOMESTIC NORTHBOUND SCHEDULES EFFECTIVE FEBRUARY 1, 1953

Table with columns for flight numbers (DC-3, Convair, DC-6) and cities (NEW ORLEANS, BROWNSVILLE, SAN ANTONIO, HOUSTON, DALLAS, TULSA, OKLAHOMA CITY, WICHITA, KANSAS CITY, DES MOINES, CHICAGO, MINNEAPOLIS-ST. PAUL). Includes arrival and departure times and aircraft types.

Lv—Leave Ar—Arrive. M—Light Face Type. PM—Boid Face Type. \*—Complimentary Meals. —Limousine service is available between Love Field, Dallas and down town Ft. Worth at the charge of \$1.00 including tax.

FOR BRANIFF LATIN AMERICAN SCHEDULES PLEASE SEE PAGES 12 AND 13

SOUTH TEXAS — SAN ANTONIO — NEW ORLEANS — HOUSTON — DALLAS  
TULSA — ST. LOUIS — KANSAS CITY — CHICAGO — ST. PAUL - MINNEAPOLIS

READ DOWN DOMESTIC NORTHBOUND SCHEDULES EFFECTIVE FEBRUARY 1, 1953

Table with columns for flight numbers (DC-3, Convair, DC-6, C-47, C-54) and cities (NEW ORLEANS, BROWNSVILLE, SAN ANTONIO, HOUSTON, DALLAS, TULSA, OKLAHOMA CITY, WICHITA, KANSAS CITY, DES MOINES, CHICAGO, MINNEAPOLIS-ST. PAUL). Includes arrival and departure times and aircraft types.

The aircraft shown to be used on schedules is subject to substitution of other aircraft as availability and service requirements may demand. —The Corpus Christi-Houston portion of flight 20, the Brownville-San Antonio portion of flight 34, the Corpus Christi-San Antonio portion of flight 60, the Corpus Christi-Houston portion of flight 78, and the Laredo-San Antonio portion of flight 82 operate with DC-3 equipment.

FOR BRANIFF LATIN AMERICAN SCHEDULES PLEASE SEE PAGES 12 AND 13



# Domestic Connecting Schedules

## EASTERN POINTS AND SOUTHWESTERN POINTS—MEXICO

TWA 37		UAL 605		UAL 615		AA 715		UAL 645		UAL 633		UAL 627		TWA 93		UAL 643		CAP 415		TWA 17		CAP 925		Connecting Carrier		AA 28		UAL 402		TWA 420		UAL 632		UAL 628		TWA 36		UAL 640		CAP 442		TWA 92		UAL 636		CAP 412		UAL 600		UAL 702	
PM	9 45	PM	9 00	PM	6 15	AM	8 30	AM	8 30	AM	5 50	AM	8 00	AM	10 00	PM	12 30	Noon	12 00	PM	4 00	PM	2 35	PM	2 35	Lv Boston Ar NEW YORK-NEWARK	PM	5 50	PM	6 35	PM	8 35	PM	11 20	PM	7 50	PM	9 50	PM	10 25	AM	5 05	AM	2 30	AM	2 19	AM	10 50	PM	12 55	

## PACIFIC COAST—ROCKY MOUNTAINS AND OKLAHOMA—TEXAS—MEXICO

AA 900		AA 910		AA 908		UAL 604		UAL 630		TWA 6		AA 902		UAL 612		UAL 636		Connecting Carrier		AA 111		UAL 645		AA 911		UAL 629		UAL 611		AA 901-7		UAL 611		UAL 635				
AM	12 20	PM	8 40	PM	10 55	PM	8 15	PM	9 35	PM	9 25	PM	11 50	AM	7 25	AM	8 45	AM	9 00	Lv SEATTLE Ar PORTLAND	PM	6 00	PM	8 45	PM	11 20	PM	10 00	AM	4 30	PM	9 15	AM	4 30	AM	5 25	AM	4 10

## MINNEAPOLIS-ST. PAUL — CHICAGO — ST. LOUIS — DES MOINES — OMAHA TO WESTERN POINTS

UAL 639		TWA 1		TWA 9		CAL 69		UAL 607		TWA 59		TWA 87		TWA 11		CAL 963		TWA 11		UAL 603		BRANIFF AIRWAYS		318		318		192		192		20		300		350		968		318		318		176		396	
AM	9 45	AM	12 40	AM	12 35	AM	12 10	AM	5 20	AM	7 00	AM	5 30	AM	11 50	AM	7 50	AM	11 50	AM	10 45	Lv MINNEAPOLIS-ST. PAUL (CST) Ar CHICAGO	AM	11 15	AM	11 15	PM	5 31	PM	5 31	PM	12 55	PM	8 00	AM	2 09	AM	11 15	AM	11 15	AM	11 13					

AA—American Airlines. CAL—Continental Airlines. CAP—Capital Airlines. TWA—Trans World Airlines. UAL—United Air Lines.  
 d—Via connecting flight at Dallas. P—Via Pan American Airways. Local standard time is shown at all points.

# Domestic Fares

## BUY ROUND TRIP — 10% DISCOUNT ON RETURN TICKET — BUY ROUND TRIP

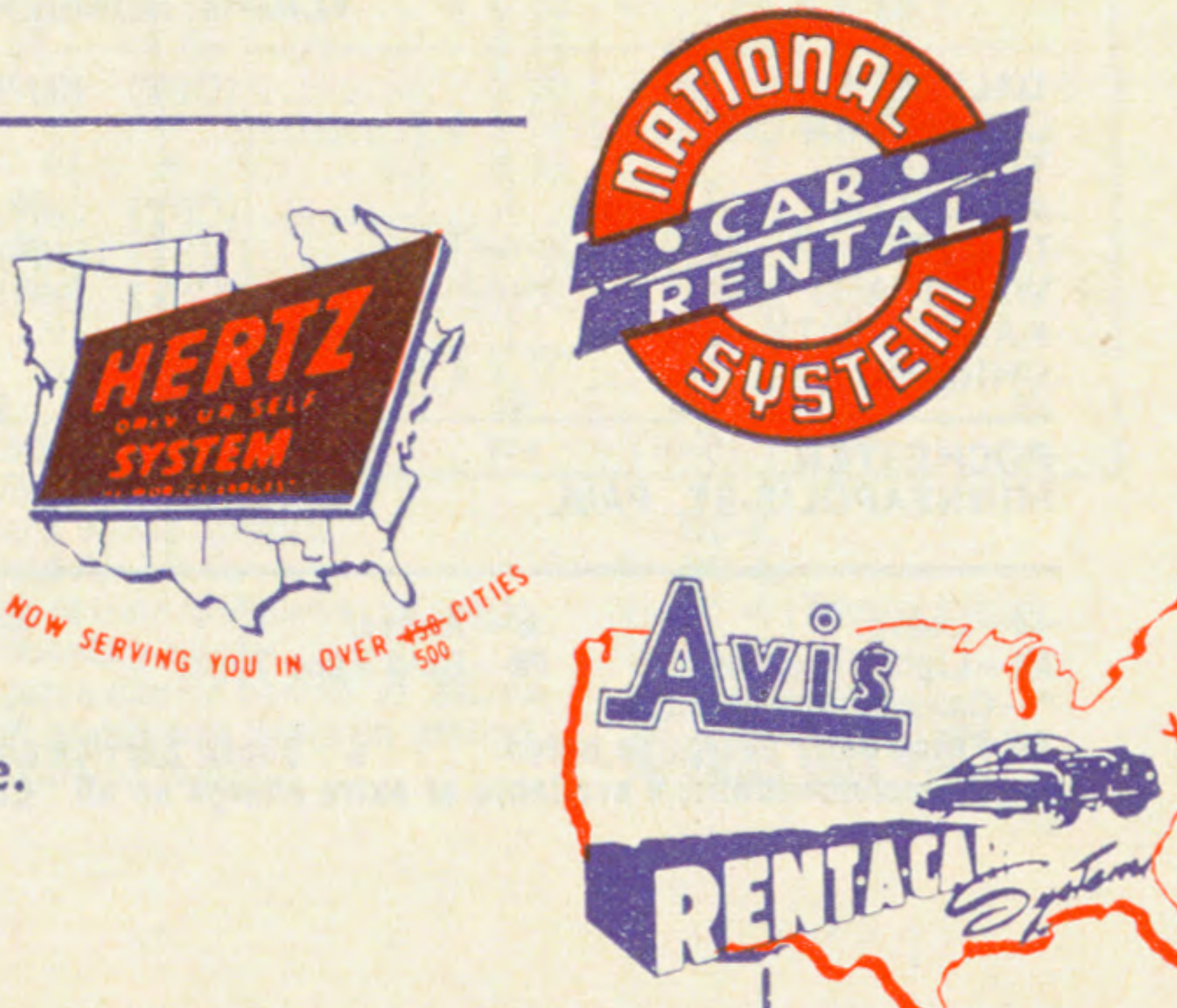
February 1, 1953	Amarillo	Austin Texas	Chicago	Corpus Christi	Dallas Ft. Worth	Denver	Des Moines	Houston	Kansas City	Little Rock	Lincoln	Longview	Lubbock	Memphis	Minneapolis St. Paul	New Orleans	Oklahoma City	Omaha	Rochester Minn.	San Antonio	Sioux City	St. Louis	Tulsa	Wichita	Wichita Falls
AND BETWEEN	\$65.10	\$79.55	\$80.00	\$67.55	\$67.55	\$27.70	\$27.70	\$34.05	\$34.05	\$36.10	\$26.30	\$67.90	\$7.00	\$45.15	\$15.85	\$80.45	\$56.45	\$22.85	\$20.10	\$82.25	\$17.35	\$45.65	\$48.60	\$46.75	\$13.20

15% U. S. Government Tax to be added to these fares in accordance with Section 302 of the U. S. Revenue Act of 1943, effective April 4, 1944. All fares and schedules shown herein are for information only, and are subject to change and correction without notice. Official Braniff Airways Fares are published in local and Joint Passenger Tariff No. PF-4, ATB, No. 12, C. A. B. No. 18, which is on file with the Civil Aeronautics Board and which is open for public inspection at any Braniff Airways Office. All Fares are from Airport to Airport, and apply via the most direct routing unless otherwise indicated.

## Air Travel — Car Rental Plan

BRANIFF cooperates with three fine rental services to bring you an ideal plane-auto travel plan.

Rent a car in advance. You'll be met at the airport at your destination like a VIP and handed the keys to a smart, new car. Hertz, Avis and National will honor your Braniff Credit Card—no deposit, ask about it at any Braniff office.





# International Fares

Any taxes imposed by Governmental Authority are in addition to fares shown below. All fares shown for information purposes only and are subject to correction and changes without notice. Fares shown in U. S. Currency.

AND ▼	Effective November 1, 1952	BETWEEN		ASUNCION, PARAGUAY		BALBOA, CANAL ZONE		BUENOS AIRES, ARGENTINA		GUAYAQUIL, ECUADOR		HAVANA, CUBA		LA PAZ, BOLIVIA		LIMA, PERU		MON- TEVIDEO, URUGUAY		PANAMA CITY, R. OF PANAMA		RIO de JANEIRO, BRAZIL		SANTIAGO, CHILE		SAO PAULO, BRAZIL			
		One Way	Round Trip	One Way	Round Trip	One Way	Round Trip	One Way	Round Trip	One Way	Round Trip	One Way	Round Trip	One Way	Round Trip	One Way	Round Trip	One Way	Round Trip	One Way	Round Trip	One Way	Round Trip	One Way	Round Trip	One Way	Round Trip	One Way	Round Trip
ASUNCION, PARAGUAY	First Class Tourist Class	50.00 45.00	90.00 81.00	50.00 45.00	90.00 81.00	50.00 45.00	90.00 81.00	50.00 45.00	90.00 81.00	50.00 45.00	90.00 81.00	50.00 45.00	90.00 81.00	50.00 45.00	90.00 81.00	50.00 45.00	90.00 81.00	50.00 45.00	90.00 81.00	50.00 45.00	90.00 81.00	50.00 45.00	90.00 81.00	50.00 45.00	90.00 81.00	50.00 45.00	90.00 81.00	50.00 45.00	90.00 81.00

Fares quoted above are for passage from airport to airport and apply via the most direct routing unless otherwise specified.  
 © Fares between Buenos Aires and the U. S. A. and Cuba allow routing direct or via Rio de Janeiro/Sao Paulo via Braniff Airways and connecting carriers.

# Passenger Information

**AIRPLANES:** U. S. Schedules on pages 4, 5, 6, 7, 8 and 9 shown in blue on red background are operated with 52-passenger DC-6 Braniff Skyliners. Schedules shown in red on white background are operated with 48-passenger DC-4 Skyliners. Schedules shown in blue on blue background are operated with 40 or 44 passenger Convairliners. All other schedules are operated with 21 or 24-passenger DC-3 Skyliners. International schedules on page 12 are operated with DC-6 De Luxe Skyliners on "EL CONQUISTADOR" flights; DC-4 air-coaches on "EL INTER-CONTINENTAL" flights.

**HOURS OF ARRIVAL AND DEPARTURE:** Time shown is local standard time. A.M. in light face, P.M. in dark face.

**CHECK IN FOR FLIGHTS:** Our passengers expect on-time performance. Therefore, to maintain our enviable on-time record, we reserve the right to cancel the reservation of any passenger who fails to present himself at the airport ticket office at least ten minutes prior to the scheduled departure time of a domestic flight, and at least 30 minutes before scheduled departure time of an international flight. Help us keep your flight on time. Check in early.

**BAGGAGE INFORMATION:** The free baggage allowance on all flights within the United States and Canada is 40 pounds. Baggage in excess of 40 pounds is charged for at the rate of 1/2 of 1% of the regular one-way fare per pound. International passengers are allowed 66 pounds and baggage in excess of this weight is charged for at the rate of 1/2 of 1 percent of the regular one-way fare per pound for the first 22 pounds and 1/4 of 1% for all additional pounds.

Should baggage or personal property be lost, damaged or delayed in delivery, our liability is limited to \$100 for each ticket, unless extra value charges are paid before departure, or when checking articles for temporary storage. When you leave the airplane at your destination, please make certain that you remove your hand parcels, briefcase, camera, etc.

**GROUND TRANSPORTATION:** is provided at all stations served by Braniff by reliable operators not under the control of Braniff, at reasonable rates, and for information purposes only such rates prevailing on the effective date of this folder are shown on this page.

**HOTEL RESERVATIONS:** Any Braniff office will gladly arrange your hotel reservations in any city served by the airline.

**MEAL SERVICE:** Delicious complimentary meals are served aloft on flights at regular meal hours. In addition, liquids are available between meal hours. Meal service on Tourist flights is available at a nominal charge.

**INSURANCE:** Domestic airline trip insurance may be purchased from any Braniff Airways ticket office in the United States. The charge for a \$5000 policy, good on any certified airline, is 25 cents.

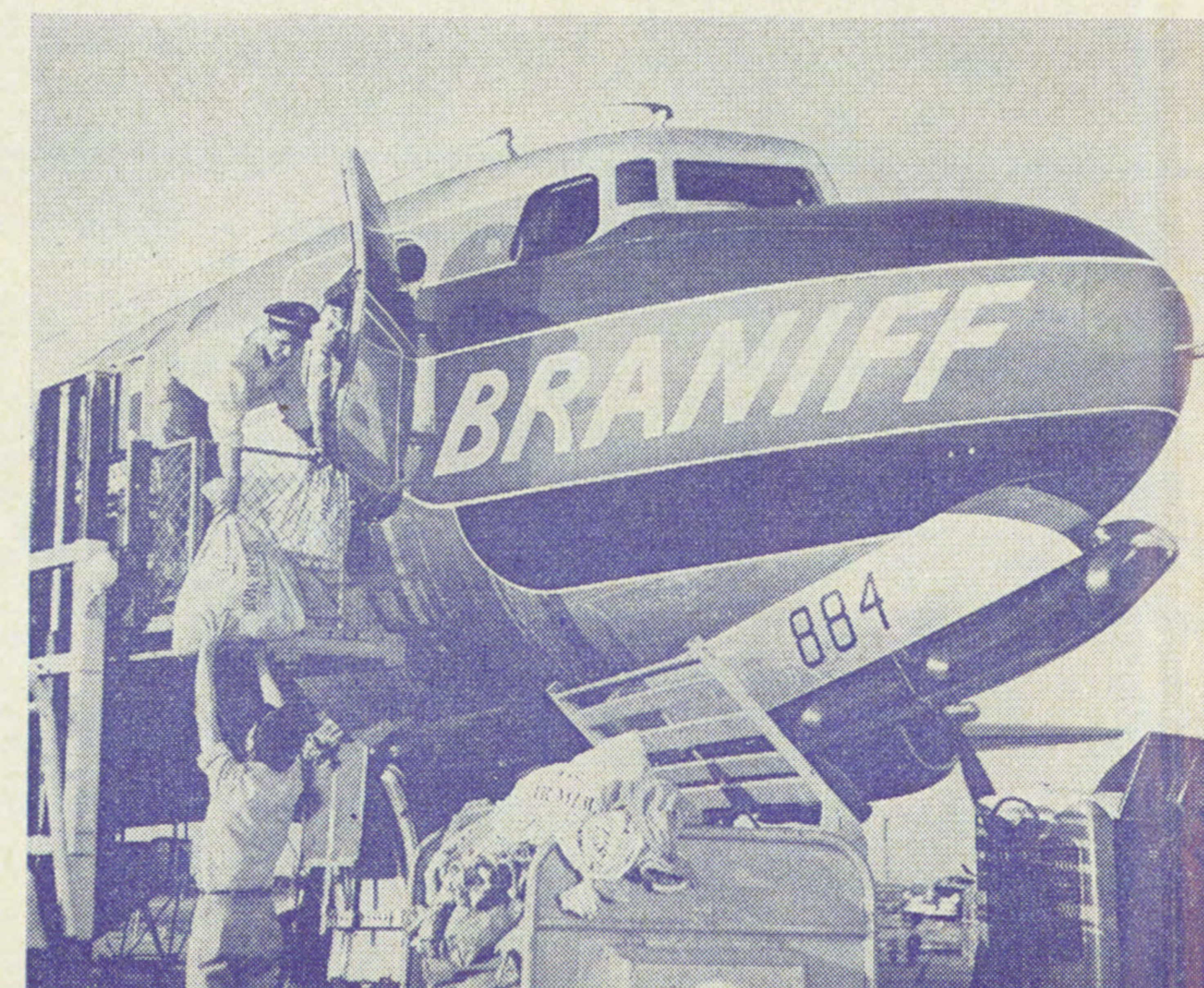
For foreign travel, our insurance company extends its policies purchased in the United States over any portion of our foreign operations at comparable rates.

**CHILDREN—DOMESTIC AND U.S.-CUBA SERVICE:** (a) One child under 2 years not occupying a seat carried free with each accompanying adult passenger. (b) Children under 2 years occupying a seat, or over 2 years and under 12 years, are charged one-half adult fare. (c) Children under 5 years must be accompanied by a passenger at least 12 years old. Children between 5 and 8 may travel alone only with prior arrangements. **INTERNATIONAL:** One child under 2 years not occupying a seat carried with each accompanying adult passenger at 10% of adult fare. Children over 2 and under 12 years, a child under 2 occupying a seat, and more than one child accompanying a passenger are charged one-half fare. Children may travel alone only under certain conditions and with prior arrangement.

**FAMILY FARES:** On Monday, Tuesday and Wednesday your wife and children, 21 years of age and under, travel half fare when you buy one regular fare ticket to any point served by Braniff in the United States. Family half fares also apply on your family's return trip on Monday, Tuesday or Wednesday of any week, but you may return any day. Mother may buy a regular fare ticket and take the children at half fare even if father can't go. Family half fares also apply between domestic points and Havana, Cuba on Braniff international routes.

**SCHEDULES AND FARES:** All schedules and fares shown herein are for information only, and are subject to change and correction without notice. Official Braniff Airways, Inc., fares for passage between points within the U.S.A. are published in Local and Joint Passenger Tariff No. PF-4, A.T.B. No. 12, C.A.B. No. 18, Charles C. Hubbard, Jr., Agent, which is on file with the Civil Aeronautics Board. Official Braniff Airways, Inc., fares for passage between points in the U.S.A. and points in Cuba, the Canal Zone, Ecuador, Peru, Bolivia, Paraguay, Brazil and Argentina are published in Braniff Airways, Inc., International Local and Joint Passenger Tariff No. PF-1, C.A.B. No. 24, issued by Louis A. Person, and International Air Transport Association, Western Hemisphere Passenger Fares Tariff No. IPF-1A, C.A.B. No. 8, issued by W. D. Barrington, Agent, which are on file with the Civil Aeronautics Board in the U.S.A. and with the governments of the countries between which fares are published. These tariffs are open for public inspection at any Braniff Airways office. . . . Fares are for passage from airport to airport only, and apply via the most direct routing unless otherwise specified.

# new 4-engine cargo service!



Now we're pleased to announce greatly expanded capacity daily (Monday through Friday) from Chicago to Dallas. In addition, C-47 CARGO PLANE feeder service from TEXAS points and from the TWIN CITIES to KANSAS CITY. For complete details and new tariffs, call any Braniff office or write to Cargo Manager, Braniff International Airways, Love Field, Dallas, Texas.