

fly
**PACIFIC
SEABOARD
AIR LINES
INC.**



CHICAGO

PEORIA

↑
SPRINGFIELD

↑
ST. LOUIS

↑
MEMPHIS

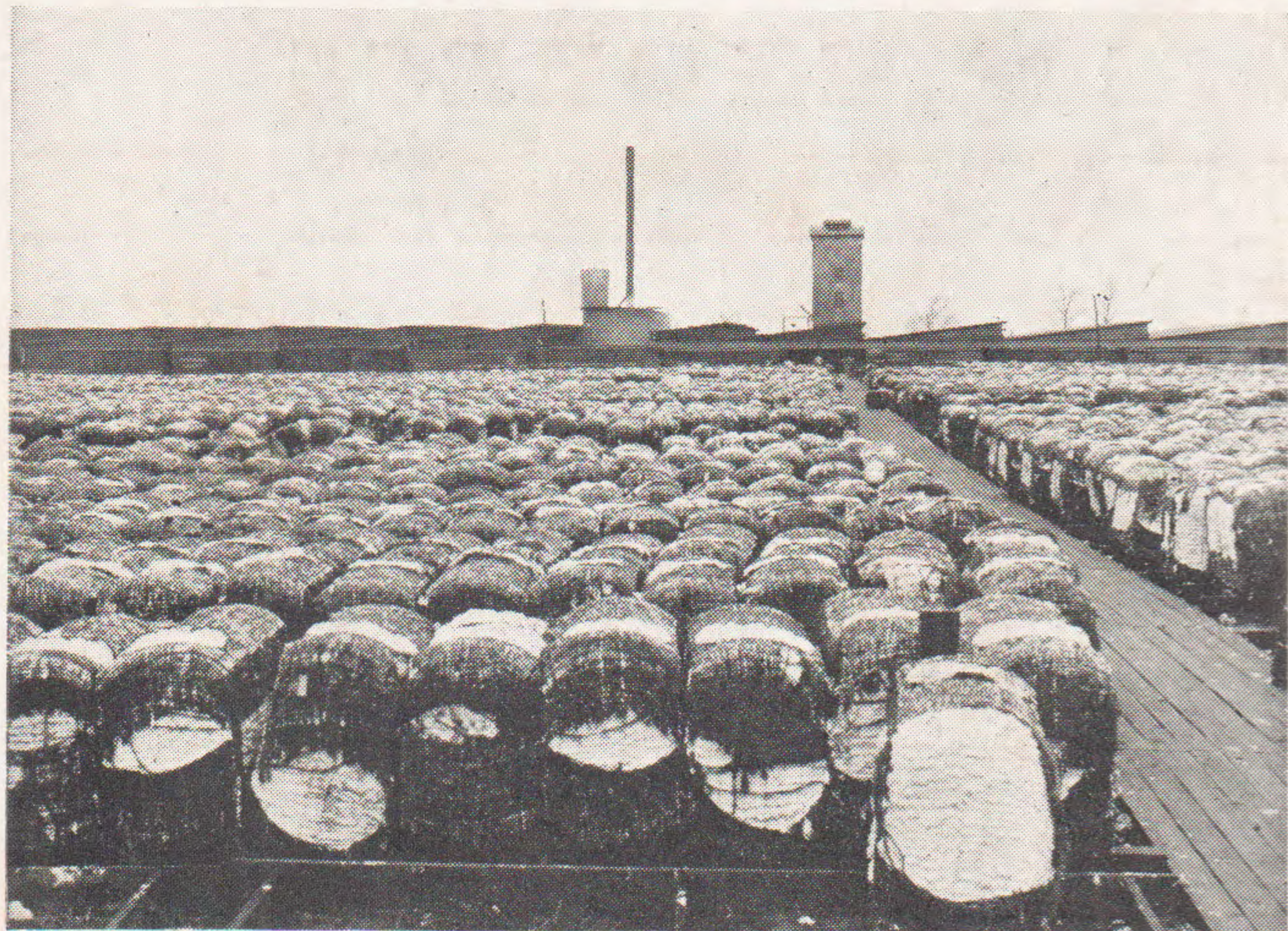
↑
GREENWOOD

↑
JACKSON

NEW ORLEANS

SCHEDULES • FARES

COTTON—WHITE GOLD OF THE SOUTH



Cotton stored in the world's largest warehouse at Memphis. Pacific Seaboard Air Lines route New Orleans to Chicago serves the largest cotton shipping centers of the world.

PACIFIC SEABOARD AIR LINES

IN announcing its Central Valley Division, Pacific Seaboard Air Lines reopens air transport service from Chicago to the Gulf. Connecting the industrial and distributing areas of Illinois and Missouri with the cotton, timber and sugar country of the Mississippi south, it provides schedules approximate in all respects to those previously flown over the mid-continent route, and it proposes to expand its operations both as to speed and spaciousness of equipment as rapidly as manufacturing conditions permit.

Pacific Seaboard has played a prominent part in building the new air mail rate structure of the United States, confident that passenger and express traffic have now reached a volume sufficient in themselves to return substantial revenues. But it has done so at no sacrifice of security or regularity of operation. Flying at all times under the strict supervision of its own technical experts and of the Department of Commerce, the company operates planes which hold more records for reliability than any other aircraft ever designed. Each is equipped with a full complement of the most advanced scientific aids to air navigation, including radio. Weather observers are located at all stopping points along the route and at frequent intermediate stations. Only men of established character, noted for their conservative judgment and with many thousands of hours experience in the air have been chosen as pilots. Throughout its organization Pacific Seaboard maintains standards of dependable and efficient service developed through long experience in the west.

Consult your nearest agent for further details. He will be glad to make route suggestions and to arrange stop-overs along the nation's air net-work. Time and distance need no longer be considered in your travel plans.

Carlton Putnam
President.

Agent's Stamp

Subject to Change Without Notice.

EFFECTIVE SEPT. 1, 1934

COPYRIGHTED

TOOF-MEMPHIS

fly
PACIFIC SEABOARD AIR LINES INC.



CHICAGO

PEORIA

SPRINGFIELD

ST. LOUIS

MEMPHIS

GREENWOOD

JACKSON

NEW ORLEANS

SCHEDULES • FARES

PACIFIC SEABOARD AIR LINES, INCORPORATED

MAIL • PASSENGERS • EXPRESS

C. S. TIME SCHEDULES C. S. TIME

1A Daily South—Read Down	Miles	EFFECTIVE SEPTEMBER 1, 1934				Miles	2A Daily North—Read Up
7:00AM	0	Lv. Chicago			Ar.	890	6:40PM
8:20AM	127	Lv. Peoria			Lv.	763	5:15PM
9:10AM	190	Lv. Springfield			Lv.	700	4:30PM
10:00AM	268	Ar. St. Louis			Lv.	622	3:30PM
10:15AM	268	Lv. St. Louis			Ar.	622	3:15PM
12:40PM	531	Ar. Memphis			Lv.	359	12:40PM
1:00PM	531	Lv. Memphis			Ar.	359	12:15PM
2:15PM	647	Lv. Greenwood			Lv.	243	11:10AM
3:00PM	719	Ar. Jackson			Lv.	171	10:15AM
3:10PM	719	Lv. Jackson			Ar.	171	10:05AM
5:00PM	890	Ar. New Orleans			Lv.	0	8:25AM

AUTUMN EXCURSIONS PASSENGER FARES ROUND TRIP 20% REDUCTION

One-Way Fares in Light Faced Type Round Trip Fares in Bold Faced Type	Chicago	Peoria	Springfield	St. Louis	Memphis	Greenwood	Jackson	New Orleans
Chicago				13.95 22.32	30.98 49.57	37.94 60.72	43.51 69.62	53.89 86.22
Peoria				9.56 15.30	26.59 42.54	33.55 53.68	39.12 62.59	49.50 79.20
Springfield				5.13 8.21	22.15 35.44	29.11 46.58	34.69 55.50	45.07 72.11
St. Louis	13.95 22.32	9.56 15.30	5.13 8.21		17.03 27.25	23.99 38.40	29.56 47.30	39.94 63.90
Memphis	30.98 49.57	26.59 42.54	22.15 35.44	17.03 27.25		7.54 12.08	12.53 20.05	22.91 36.66
Greenwood	37.94 60.72	33.55 53.68	29.11 46.58	23.99 38.40	7.54 12.08		5.32 8.52	14.70 23.52
Jackson	43.51 69.62	39.12 62.59	34.69 55.50	29.56 47.30	12.53 20.05	5.32 8.52		10.38 16.61
New Orleans	53.89 86.22	49.50 79.20	45.07 72.11	39.94 63.90	22.91 36.66	14.70 23.52	10.38 16.61	

GENERAL INFORMATION

Transportation to and from Airports—Contact Pacific Seaboard Air Lines offices or authorized representatives for information regarding special cab service listed below.

Starting Point	Airport	Running Time	Rate
Chicago Loop	Municipal Airport	50 Min.	\$0.75
Peoria Business Dist.	Peoria Airport	25 Min.	.50
Springfield Business Dist.	Springfield Airport	25 Min.	.50
St. Louis Business Dist.	Lambert Field	55 Min.	1.00
Memphis Business Dist.	Municipal Airport	40 Min.	1.00
Greenwood Bus. Dist.	Municipal Airport	15 Min.	.50
Jackson Business Dist.	Municipal Airport	30 Min.	.50
New Orleans Bus. Dist.	Wedell-Williams Airport	40 Min.	.75

ANIMALS—Live animals and reptiles will not be carried.
BAGGAGE—Thirty (30) pounds of baggage will be carried free on any ticket. Excess baggage will be accepted upon special arrangement at the rate per pound of one-half of one per cent of the one-way fare. The liability of the Carrier for loss of or damage to baggage and/or personal property is limited to the amount of Fifty Dollars (\$50.00).
CHILDREN—Children under two years of age when held in arms of parent or guardian are carried free. Children over two years of age will be charged full fare.
PASSAGE, CANCELLATION BY COMPANY—The Company reserves the right to cancel bookings before passage or en route. Pilot may remove passengers from plane or refuse them admittance to plane at any point on the route for safety or other cause. In all events the passenger's sole recourse shall be recovery of that proportion of the fare equal to the distance untraveled.
PASSAGE, CANCELLATION BY PASSENGER—Passengers may receive a refund for passage if cancelled 2 hours prior to flight.

TICKET OFFICES

Chicago, Illinois—City Office, LaSalle Hotel State 8910
 Airport Ticket Office..... Grovehill 1400
Peoria, Illinois—Airport..... 5322
 Ticket Office, Pere Marquette Hotel..... 45070
Springfield, Illinois—Airport..... 3243
St. Louis, Missouri—Airport..... Winfield 0750, Winfield 0710
Memphis, Tennessee—Airport..... 3-1171
Greenwood, Mississippi—Pepper Electric Co..... 27
 Barrett Drug Co..... 114
Jackson, Mississippi—Airport..... 5231
 City Office, Edwards Hotel..... 7128
New Orleans, Louisiana—Airport..... Cedar 1659, Cedar 1960
 Reservations and tickets available at leading hotels (porter's desk), travel bureaus, ticket offices of connecting air lines, Western Union or Postal Telegraph offices.

RADIO—All passenger planes are equipped with radio.
REFUNDS—Requests for refunds on tickets should be addressed to the Auditor of Ticket Accounts, Pacific Seaboard Air Lines, Inc., Municipal Airport, Memphis, Tennessee.
RESERVATIONS—All seats are reserved. Reservations will not be made except upon payment of fare.
ROUND-TRIP FARES—20 per cent reduction will be allowed on all round-trip tickets if purchased before start of original trip. Return trip must be commenced within sixty days.
STOP-OVERS—Ten (10) days stop-overs will be allowed at any regular stop provided reservation is made accordingly.
TIME-TABLES—These time tables show the times at which planes may be expected to depart from and arrive at the several stations shown, but are subject to change without notice, and are not guaranteed by the company.

SHIP BY AIR EXPRESS • CALL RAILWAY EXPRESS AGENCY