

EFFECTIVE MAY 1, 1938

CHICAGO & SOUTHERN

"The Valley Level Route"



SERVING THE NATIONS AIRWAYS VIA

CHICAGO

SPRINGFIELD

ST. LOUIS

MEMPHIS

JACKSON

NEW ORLEANS

PASSENGERS, EXPRESS, MAIL

CHICAGO & SOUTHERN

"The Valley Level Route"

TICKET OFFICES

Chicago, Illinois..... City Office, 33 Palmer House..... Central 8282
 Airport Ticket Office..... Grovehill 1400
 Columbus, Ohio..... 22 South Third Street..... Main 4421
 Airport..... Fairfax 1181
 Dayton, Ohio..... Gibbons Hotel..... Adams 4161
 Airport..... Adams 2221
 Greenwood, Miss..... L. D. Pepper..... 27 or 616
 Indianapolis, Ind..... 108 W. Washington St..... Lincoln 2596
 Airport..... Belmont 2200
 Jackson, Mississippi..... City Office, Edwards Hotel..... 7128 or 1804
 Airport..... 3178
 Kansas City, Mo..... Muehlebach Hotel..... Harrison 4321
 Airport..... Harrison 4321
 Memphis, Tennessee..... City Office, Peabody Hotel, 159 Union..... 8-2255
 Airport..... 3-1171
 Minneapolis, Minn..... 129 S. 7th Street..... Atlantic 1406
 New Orleans, Louisiana..... City Office, 205 St. Charles St., Raymond 5559
 Airport..... Franklin 0111
 New York, New York..... Airlines Consolidated Ticket Office (Gen'l
 Agt.) 41 E. 47th Street..... El Dorado 52300
 Peoria, Illinois..... Ticket Office, Hotel Jefferson..... 3-2515
 Pittsburgh, Pa..... 504 Wm. Penn Way..... Grant 2400
 Airport..... Homestead 4200
 Air Travel Bureau, Inc..... Grant 6100
 Springfield, Illinois..... Airport..... Main 3243
 St. Louis, Missouri..... City Office, 1201 Locust St..... Central 2633
 Airport..... Winfield 0750, Winfield 0710
 Saint Paul, Minnesota..... Reservations..... Midway 1440
 Reservations and tickets available at leading hotels (porter's desk), travel bureaus, ticket offices of connecting airlines, Western Union or Postal Telegraph offices.

GENERAL INFORMATION

AIR TRAVEL CARDS—Are available whereby passengers may save 15% of published one-way fares.
ANIMALS—Live animals and reptiles will not be carried.
BAGGAGE—Thirty-five (35) pounds of baggage will be carried free on any ticket. Excess baggage will be accepted upon special arrangement at the rate per pound of one-half of one per cent of the one-way fare. The liability of the Carrier for loss of or damage to baggage and/or personal property is limited to the amount of One Hundred Dollars (\$100.00), unless a higher valuation is declared and the insurance paid therefor.
CHILDREN—Children under two years of age when held in arms of parent or guardian are carried free. Children over two years of age will be charged full fare.
EQUIPMENT—Lockheed Electras standard equipment on all schedules.
PASSAGE, CANCELLATION BY COMPANY—The company reserves the right to cancel bookings before passage or en route. Pilot may remove passengers from plane or refuse them admittance to plane at any point on the route for safety or other cause. In all events the passenger's sole recourse shall be recovery of that proportion of the fare equal to the distance untraveled.
PASSAGE, CANCELLATION BY PASSENGER—Passengers may receive a refund for passage if cancelled 3 hours prior to flight.
RESERVATIONS—All seats are reserved. Reservations should be made as early as possible.
ROUND-TRIP FARES—10 per cent reduction will be allowed on all round-trip tickets if purchased before start of original trip. Return trip must be commenced within sixty days.
STOP-OVERS—Ten (10) days stop-overs will be allowed at any regular stop provided reservation is made accordingly.
TIME-TABLES—These time-tables show the times at which planes may be expected to depart from and arrive at the several stations shown, but are subject to change without notice, and are not guaranteed by the company.

EFFECTIVE MAY 1, 1938

CHICAGO & SOUTHERN

"The Valley Level Route"



SERVING THE NATIONS AIRWAYS VIA

CHICAGO

SPRINGFIELD

ST. LOUIS

MEMPHIS

JACKSON

NEW ORLEANS

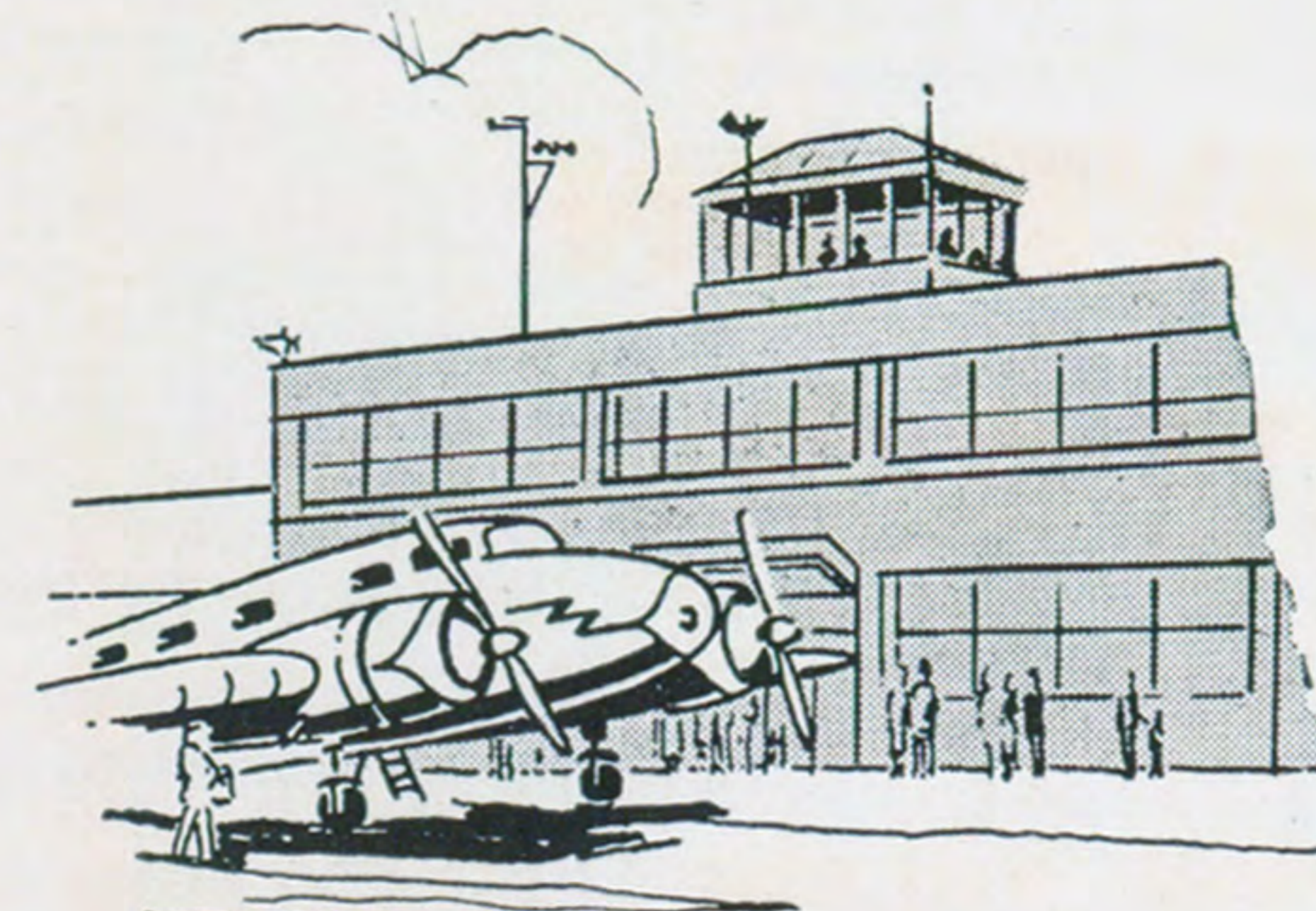
PASSENGERS, EXPRESS, MAIL

Now! 3 Flights—Each Way—Each Day!

EVERY MORNING
"The Acadian"

EVERY AFTERNOON
"The Rainbow"

EVERY EVENING
"The Cotton King"



NEW-CONVENIENT AFTERNOON
FLIGHTS... TRAVEL ON

"THE RAINBOW"

EVERY DAY..Three Schedules . . Each Way . . to save you time and money. "The Rainbow" rounds out Chicago & Southern's service to all points on the beautiful "Valley Level Route", providing a maximum of travel value at a minimum of cost. You enjoy great savings between important terminals served by this modern transportation system.

HERE'S ACTUAL PROOF!

Comparison Chicago & Southern Flying Time with Best Ground Transportation	Scheduled Flying Time Chicago & Southern	Cost—Complimentary Meals. No tips accepted	Time—By Best Ground Transportation	Cost—Including Meals and Tips
Chicago to New Orleans... 6 hrs. 5 min. "The Valley Level Route" Saves you 13 hrs. 55 min. for \$1.70		\$44.60	20 hrs.	\$42.90
St. Louis to Memphis..... 1 hr. 40 min. "The Valley Level Route" Saves you 5 hrs. 45 min. for 64c less		\$13.93	7 hrs. 25 min.	\$14.57
Jackson to Chicago..... 4 hrs. 55 min. "The Valley Level Route" Saves you 10 hrs. 20 min. for \$1.40		\$36.50	15 hrs. 15 min.	\$35.10
New Orleans to Memphis. 2 hrs. 30 min. "The Valley Level Route" Saves you 5 hrs. 40 min. for 16c		\$19.76	8 hrs. 10 min.	\$19.60

Wives FLY FREE until June 1, 1938

Here's good news! Due to popular demand Chicago & Southern extends its offer of a complimentary trip for wives! Until June 1st, if husbands buy a ticket at regular low Chicago & Southern fares, their wives may accompany them free of charge.

You Save so much time at so little cost when you travel Chicago & Southern—"The Valley Level Route"

TWIN CITIES, ST. LOUIS, MEMPHIS, JACKSON, NEW ORLEANS

Table with flight times and destinations for Twin Cities, St. Louis, Memphis, Jackson, New Orleans routes.

CHICAGO, ST. LOUIS, FT. WORTH, PHOENIX, CALIFORNIA

Table with flight times and destinations for Chicago, St. Louis, Ft. Worth, Phoenix, California routes.

CHICAGO, ST. LOUIS, MEMPHIS, BEAUMONT, HOUSTON

Table with flight times and destinations for Chicago, St. Louis, Memphis, Beaumont, Houston routes.

CHICAGO, ST. LOUIS, MEMPHIS, BIRMINGHAM, ATLANTA

Table with flight times and destinations for Chicago, St. Louis, Memphis, Birmingham, Atlanta routes.

ATLANTA, BIRMINGHAM, JACKSON, NEW ORLEANS

Table with flight times and destinations for Atlanta, Birmingham, Jackson, New Orleans routes.

AMA—American Airlines, BNF—Braniff Airways, C&S—Chicago & Southern Air Lines, DAL—Delta Air Lines, EAL—Eastern Air Lines, HAN—Hanford Airlines, NWA—Northwest Airlines, PCA—Pennsylvania-Central Airlines, TWA—Transcontinental & Western Air, UAL—United Air Lines



The Valley Level Route



CHICAGO • ST. LOUIS • MEMPHIS • JACKSON • NEW ORLEANS

Table with flight times and destinations for Chicago, St. Louis, Memphis, Jackson, New Orleans routes.

f Flag stop to pick up or discharge passengers. Complimentary meals on Flights 1, 2, 4 & 5. 10% Reduction on round trip tickets.

CONNECTIONS FROM THE EAST TO THE EAST

Large table showing flight connections from the East to the East, including stations and times.

AMA—AMERICAN AIRLINES, TWA—TRANSCONTINENTAL AND WESTERN AIR, UAL—UNITED AIR LINES, Light Face—AM, Dark Face—PM, + Via connecting airline, f Stops to pick up or discharge passengers, + C. & S. will hold 10 minutes for UAL.

NEW ORLEANS, JACKSON, DALLAS, LOS ANGELES, SAN FRANCISCO

Table with flight times and destinations for New Orleans, Jackson, Dallas, Los Angeles, San Francisco routes.

SAN FRANCISCO, LOS ANGELES, KANSAS CITY, ST. LOUIS, MEMPHIS, NEW ORLEANS

Table with flight times and destinations for San Francisco, Los Angeles, Kansas City, St. Louis, Memphis, New Orleans routes.

Light Face Indicates One Way, Dark Face Indicates Round Trip

Low Fares

Table showing low fares for various cities including Atlanta, Birmingham, Chicago, Cleveland, Dallas-Ft. Worth, Detroit, Greenwood, Houston, Indianapolis, Jackson, Jacksonville, Kansas City, Los Angeles, Memphis, Miami, Minneapolis-St. Paul, New Orleans, New York, Philadelphia, Pittsburgh, St. Louis, San Francisco, Springfield, Ill., and Washington.

a Via St. Louis, Memphis or Jackson, b Via St. Louis or Memphis, c Via Memphis, d Via Jackson, e Via Chicago, f Via St. Louis or Chicago, g Via Memphis, St. Louis or Chicago, h Via St. Louis, j Via Memphis or Jackson, k Via TWA or AMA only, (1) Via DAL at Jackson, (2) Via UAL at Chicago, (3) Via AMA at Jackson, (4) Via EAL at New Orleans, (5) Via TWA at St. Louis, (6) Via NWA at Chicago.

Air Travel Card Plans Available Saving 15%