

EFFECTIVE OCTOBER 1, 1940

PENNSYLVANIA CENTRAL *Hairlines*



SAULT STE. MARIE
WASHINGTON
CLEVELAND
CHICAGO
DETROIT
AKRON
NORFOLK
PITTSBURGH
WILLIAMSPORT



ERIE
FLINT

SAGINAW-BAY CITY
HARRISBURG
MILWAUKEE
MUSKEGON
LANSING
BUFFALO
BALTIMORE
GRAND RAPIDS
TRAVERSE CITY



WASHINGTON - GRAND RAPIDS - MILWAUKEE

Table with flight times for Washington - Grand Rapids - Milwaukee routes, including Standard Time and various daily/weekly frequencies.

WASHINGTON - HARRISBURG - ERIE - BUFFALO

Table with flight times for Washington - Harrisburg - Erie - Buffalo routes, including Standard Time and various daily/weekly frequencies.

Note: Effective Oct. 15th Douglas planes will be inaugurated on this Division.

NORFOLK - PHILADELPHIA - NEW YORK

Table with flight times for Norfolk - Philadelphia - New York routes, including Standard Time and various daily/weekly frequencies.

PITTSBURGH - ERIE - BUFFALO

Table with flight times for Pittsburgh - Erie - Buffalo routes, including Standard Time and various daily/weekly frequencies.

Note: Effective Oct. 15th Douglas planes will be inaugurated on the Pittsburgh-Erie-Buffalo route. *Douglas planes. a-Stops only to deplane or receive passengers destined beyond Detroit on PCA. c-Daily except Sun. & Hol. f-Flag stop. h-Stop temporarily discontinued.

NORFOLK - WASHINGTON - BALTIMORE - PITTSBURGH - AKRON - CLEVELAND - DETROIT

Table with flight times for Norfolk - Washington - Baltimore - Pittsburgh - Akron - Cleveland - Detroit routes, including Standard Time and various daily/weekly frequencies.

Note: Effective Oct. 15th Douglas planes will be inaugurated on Trip 61.

COMMUTER SERVICE DETROIT-CLEVELAND

Table with flight times for Commuter Service Detroit-Cleveland routes, including Standard Time and various daily/weekly frequencies.

NORFOLK - WASHINGTON - BALTIMORE - PITTSBURGH - CHICAGO - WEST COAST

Table with flight times for Norfolk - Washington - Baltimore - Pittsburgh - Chicago - West Coast routes, including Standard Time and various daily/weekly frequencies.

NORFOLK - WASHINGTON - BALTIMORE - CLEVELAND - CHICAGO - WEST COAST

Table with flight times for Norfolk - Washington - Baltimore - Cleveland - Chicago - West Coast routes, including Standard Time and various daily/weekly frequencies.

*-Douglas planes. b-Via Trip 60 from Baltimore to Washington. g-Via Trip 61 from Washington to Baltimore. f-Flag stop.

DETROIT - FLINT - LANSING - GRAND RAPIDS - MUSKEGON - MILWAUKEE - CHICAGO

Table with flight times for Detroit - Flint - Lansing - Grand Rapids - Muskegon - Milwaukee - Chicago routes, including Standard Time and various daily/weekly frequencies.

Note: Effective Oct. 3rd, Douglas planes will be inaugurated on Trips 102, 103, 106, 107, 110 and 111.

DETROIT - TRAVERSE CITY - SAULT STE. MARIE CHICAGO - GRAND RAPIDS - MUSKEGON

Table with flight times for Detroit - Traverse City - Sault Ste. Marie - Chicago - Grand Rapids - Muskegon routes, including Standard Time and various daily/weekly frequencies.

FLORIDA and the SOUTHEAST

Table with flight times for Florida and the Southeast routes, including Standard Time and various daily/weekly frequencies.

CHICAGO - MILWAUKEE - DETROIT - CLEVELAND - HARRISBURG - PHILADELPHIA - NEW YORK

Table with flight times for Chicago - Milwaukee - Detroit - Cleveland - Harrisburg - Philadelphia - New York routes, including Standard Time and various daily/weekly frequencies.

*-Douglas planes. a-Stops only to deplane or receive passengers destined beyond Detroit on PCA. c-Daily except Sundays and Holidays. d-Daily except Saturdays. e-Daily except Saturdays, Sundays and Holidays. f-Flag stop. j-Stop will be made at Flint effective approximately Oct. 10.



IT PAYS TO FLY THE CAPITAL FLEET

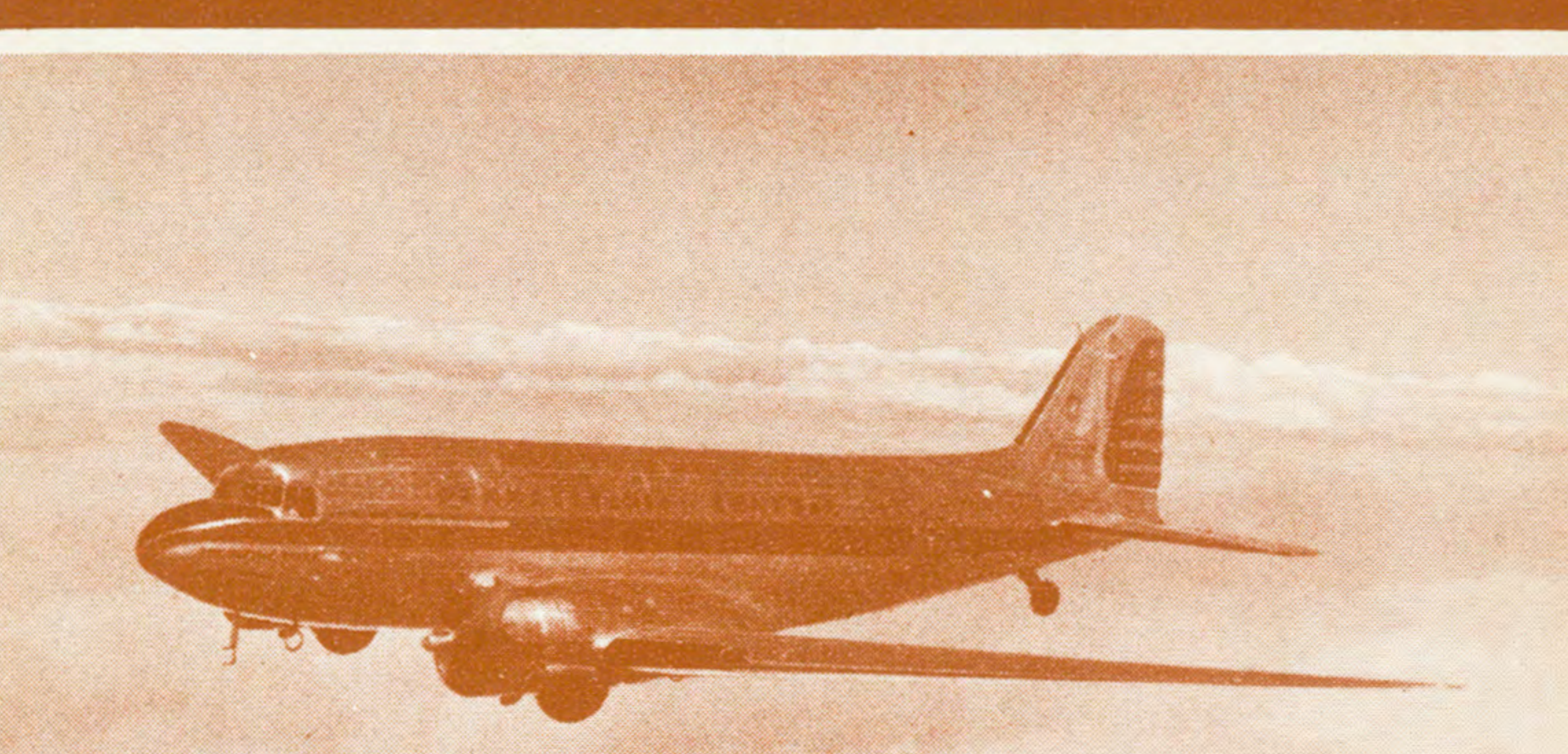
ONE-WAY FARES—Light Face Type. ROUND TRIP FARES—Bold Face Type.

Table of Passenger Fares including certain through fares on connecting air lines. Columns list cities and corresponding fares for various routes.

GENERAL INFORMATION. ANIMALS—Pets will be accepted as excess baggage under certain conditions. BAGGAGE—Forty (40) pounds of baggage will be carried free on any ticket.

FARE REFERENCES. A—Via PCA-TWA connecting at Pittsburgh or PCA-United Air Lines at Cleveland or PCA-America Airlines at Cleveland.

NOW — A GREATER CAPITAL FLEET



WITH the delivery of more 1941 Douglas Capital Liners, Pennsylvania-Central Airlines expands its famous Capital Fleet service during October.

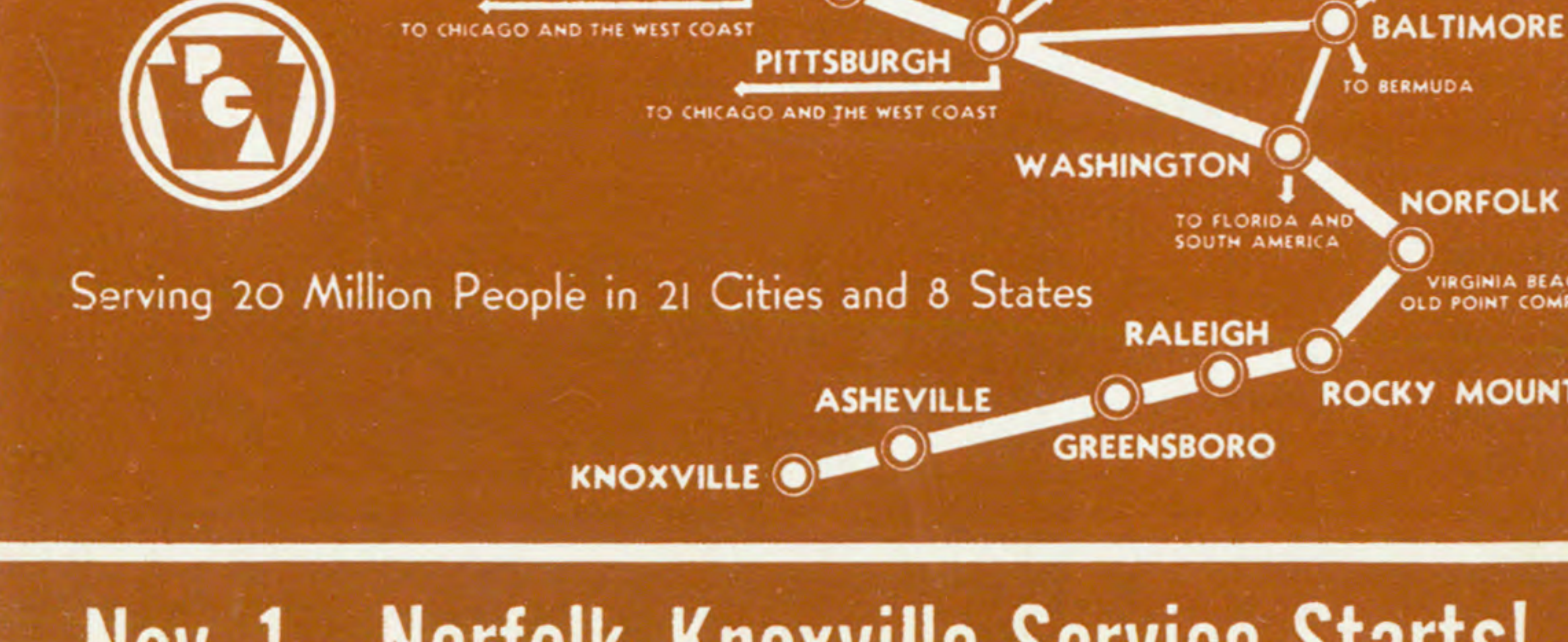
NEWS OF THE 1941 CAPITAL FLEET



OCTOBER 3—Douglas Capital Liners on the Chicago-Grand Rapids route. Now all Capital Fleet service between Chicago and Detroit.

OCTOBER 15—Capital Liners for Pittsburgh-Erie-Bufferalo service. Capital Liners for Buffalo-Harrisburg-Baltimore-Washington route.

IT PAYS TO FLY with the Capital Fleet. Luxurious, 21 passenger transports linking the Capitals of Industry with the Nation's Capital—none finer, none faster.



PENNSYLVANIA-CENTRAL AIRLINES

General Offices: Allegheny County Municipal Airport, Pittsburgh, Pa.

INFORMATION - RESERVATIONS - TICKETS

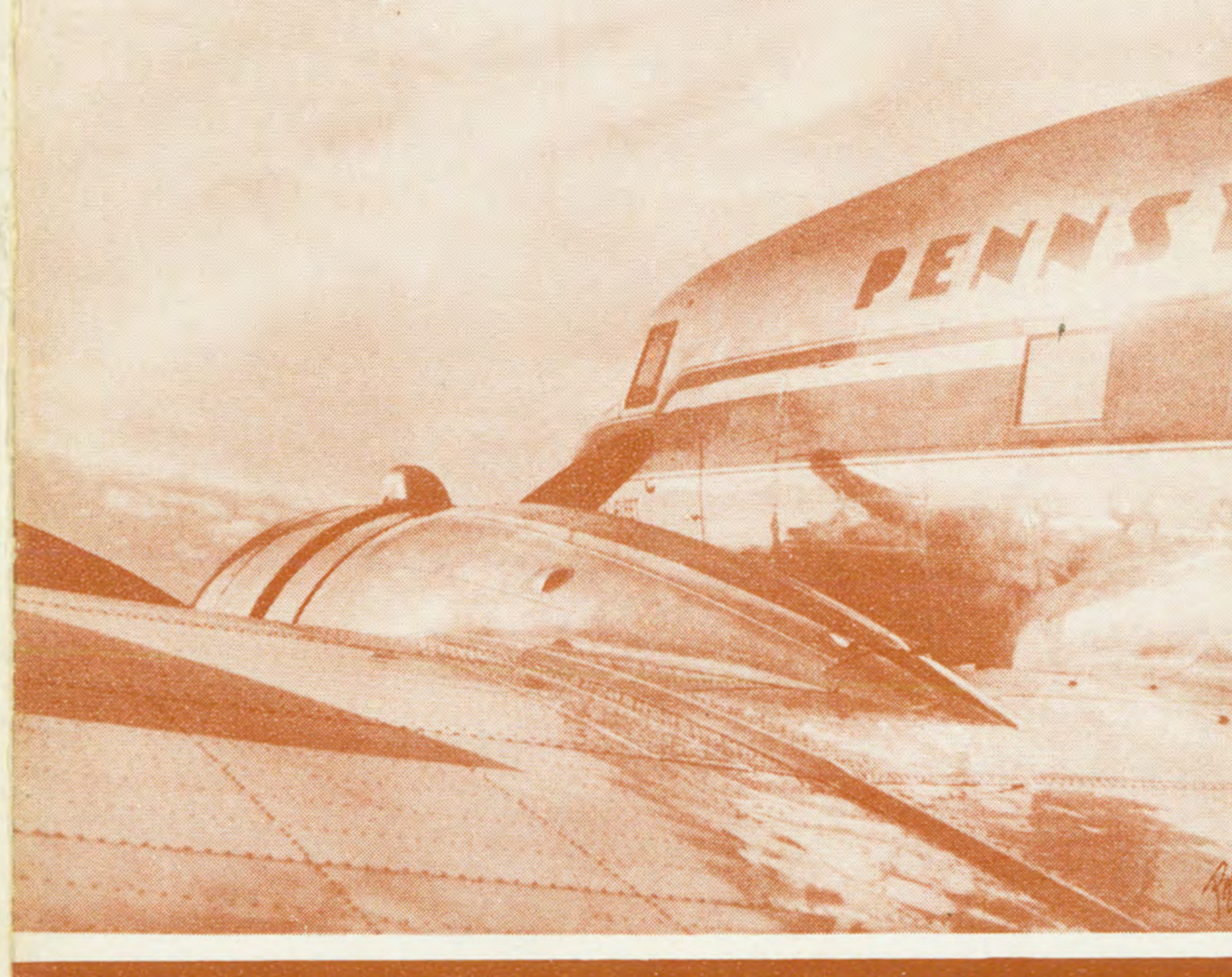
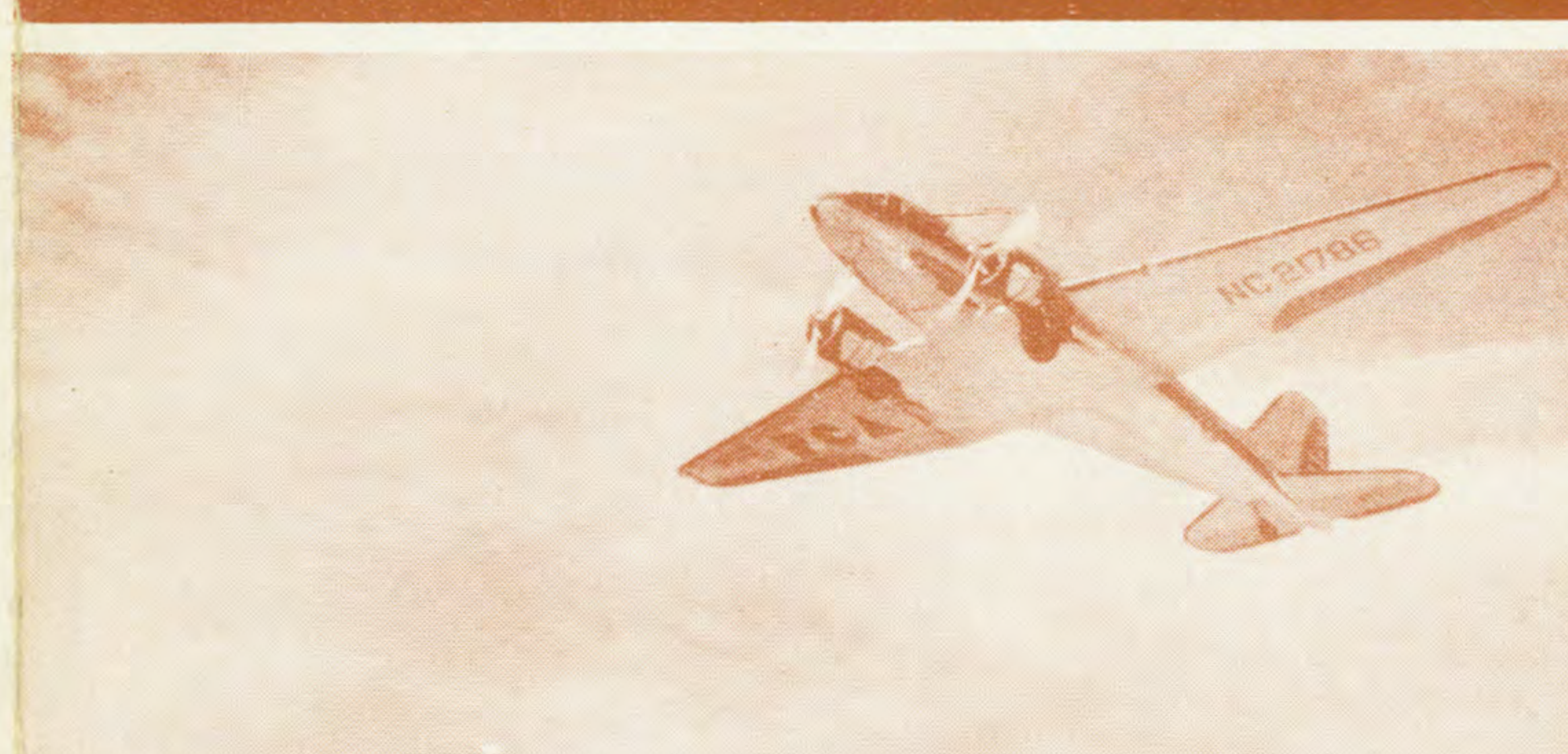
- Akron, Ohio Municipal Airport Tel. Jefferson 9111
Chicago, Ill. Logan Field Tel. Riverside 0717
Buffalo, N. Y. Municipal Airport Tel. Humboldt 6643

AIRLINE TRANSPORTATION TO AND FROM AIRPORTS

Table showing distances in miles and city terminal information for various stations.

EFFECTIVE OCTOBER 1, 1940

PENNSYLVANIA CENTRAL Airlines



- SAULT STE. MARIE
ERIE
SAGINAW-BAY CITY
WASHINGTON
HARRISBURG
CLEVELAND
MILWAUKEE

