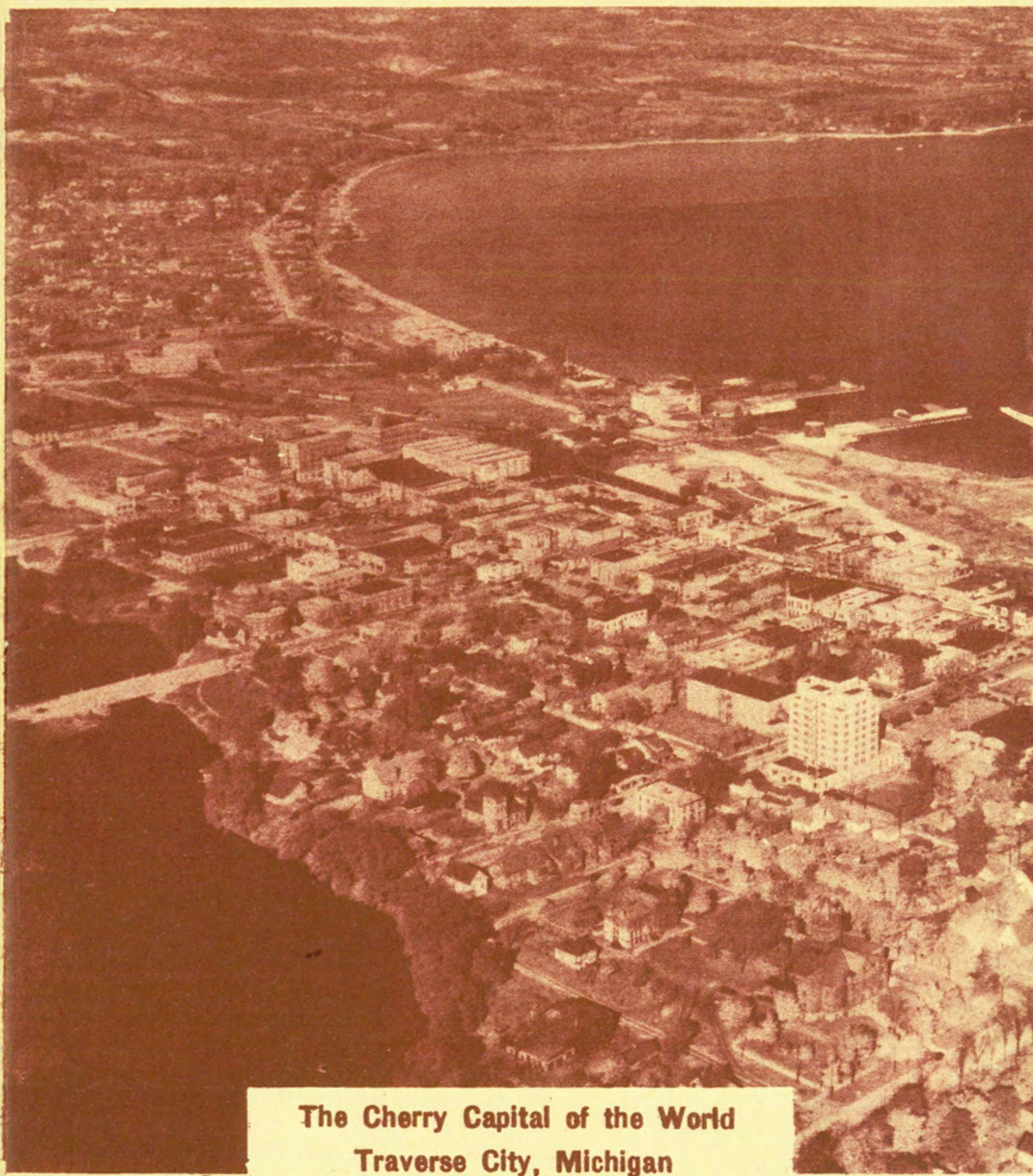


P

EFFECTIVE SEPTEMBER 1, 1938

PENNSYLVANIA *Central* AIRLINES

SERVING THE CAPITALS OF INDUSTRY



The Cherry Capital of the World
Traverse City, Michigan

SAULT STE. MARIE
WASHINGTON
CLEVELAND
CHICAGO
DETROIT
AKRON
NORFOLK
PITTSBURGH
WILLIAMSPORT

SAGINAW-BAY CITY
HARRISBURG
MILWAUKEE
MUSKEGON
LANSING
BUFFALO
BALTIMORE
GRAND RAPIDS
TRAVERSE CITY



ONE-WAY FARES—Light Face Type. (Fares quoted herein apply from airport to airport) PASSENGER FARES—Including certain through fares on connecting air lines. ROUND TRIP FARES—Bold Face Type.

CITIES	Akron	Baltimore	Buffalo	Chicago	Cleveland	Detroit	Flint	Grand Rapids	Harrisburg	Lansing	Milwaukee	Muskegon	Norfolk	Pittsburgh	Saginaw-Bay City	Sault Ste. Marie	Traverse City	Washington	Williamsport	
Akron		17.25 31.05	T13.25 23.85	20.00 36.00	2.50 4.50	9.75 17.55	13.50 24.30	18.35 33.03	B15.15 27.27	14.70 26.46	23.25 41.85	20.50 36.90	26.20 47.16	5.15 9.27	15.00 27.00	27.50 49.50	21.70 39.06	17.25 31.05		
Atlanta	N53.20 95.75	N38.30 68.92	N56.65 101.96		N55.05 99.08	N62.90 116.21	N65.35 117.62	N70.20 126.35	N42.90 77.20	N66.55 119.78			N44.90 80.81	N49.35 88.82	N68.15 125.66	N80.65 148.16	N74.85 137.72		N47.90 86.20	
Baltimore	17.25 31.05		19.70 35.46	36.00 64.80	19.10 34.38	26.95 48.51	29.45 52.92	34.25 61.65	4.95 9.30	30.60 55.08	38.50 69.30	36.40 65.52	11.30 20.31	13.40 24.12	32.20 57.96	44.70 80.46	38.90 70.02	2.35 4.20	10.10 18.18	
Buffalo	T13.25 23.85	19.70 35.46		S26.00 46.80			S16.50 29.70	S21.35 38.43	15.95 28.70	J17.70 31.86	S28.50 51.30	S23.50 42.30	29.65 53.37	12.75 22.95	S18.00 32.40	S30.50 54.90	S24.70 44.46	20.70 37.26	11.25 20.24	
Chicago	20.00 36.00	36.00 64.80	S26.00 46.80		18.25 32.84	13.25 23.85	13.25 23.85	14.31 26.10	61.10 110.07	20.25 37.33			9.95 17.91	44.95 80.91	S23.95 43.10	S31.00 55.80	S25.20 45.36	36.00 64.80	J37.25 67.04	
Cincinnati	T16.55 29.75	T28.25 50.80				T18.60 33.48	T22.35 40.23	C23.95 43.11	Y32.85 59.10	T23.55 42.39			C25.95 46.71	T34.85 62.71	T16.05 28.88	T36.35 65.43	T30.55 54.99	T25.90 46.60	Y37.85 68.10	
Cleveland	2.50 4.50	19.10 34.38		18.25 32.84		7.90 14.22	11.65 20.97	16.50 29.70	B17.00 30.60	12.85 23.13	20.75 37.35	18.65 33.57	28.05 50.49	7.00 12.60	13.15 23.67	25.65 46.17	19.85 35.73	19.10 34.38	M22.00 39.59	
Dallas	T71.00 127.80	B70.45 126.80		D68.50 123.30	T65.20 117.36	T68.95 124.11	D59.90 107.81	Y77.40 139.30	D63.20 113.75			D61.90 111.41	Y79.40 142.91	T70.20 126.36	S70.45 126.81	S82.95 149.31	S77.15 138.87	Y70.45 126.80	Y82.40 148.30	
Denver	E73.20 131.76	E89.20 160.56		V71.45 128.60	V66.45 119.61	V66.45 119.61	V61.15 110.07		V64.45 116.01			V63.15 113.67	E98.15 176.67	E77.15 138.86	S71.70 129.06	S89.20 160.55	S78.40 141.12	E89.20 160.56		
Detroit	9.75 17.55	26.95 48.51		13.25 23.85	7.90 14.22		3.75 6.75	8.60 15.48	X24.90 44.82	4.95 8.91	15.75 28.35	10.75 19.35	35.90 64.62	14.90 26.82	5.25 9.45	17.75 31.95	11.95 21.51	26.95 48.51	M24.00 43.19	
Flint	13.50 24.30	29.45 52.92	S16.50 29.70	13.25 23.85	11.65 20.97	3.75 6.75		6.50 11.70	B28.65 51.57	3.10 5.58	14.95 26.91	8.90 16.02	38.40 69.03	18.65 33.57	2.25 4.05	17.50 31.50	9.25 16.65	52.92 49.94	J27.75 49.94	
Grand Rapids	18.35 33.03	34.25 61.65	S21.35 38.43	7.95 14.31	16.50 29.70	8.60 15.48	6.50 11.70		B33.50 60.30	3.65 6.57	10.95 19.71	3.00 5.40	43.20 77.76	23.50 42.30				34.25 61.65	J32.60 58.67	
Harrisburg	B15.15 27.27	4.95 8.90	15.95 28.70	J33.95 61.10	B17.00 30.60	X24.90 44.82	B28.65 51.57	B33.50 60.30		B29.85 53.73	B37.75 67.95	B35.65 64.17	15.90 28.61		B30.15 54.27	B42.65 76.77	B36.85 66.33	6.95 12.50	5.15 9.26	
Kansas City	E41.50 74.70	B56.65 101.98		D39.75 71.54	D34.75 62.54	D34.83 62.55	D29.45 53.01		D32.75 58.95			D31.45 56.61	B65.60 118.09	E45.45 81.80	S40.00 71.99	S52.50 94.49	S46.70 84.05	B56.65 101.98	G60.60 109.06	
Lansing	14.70 26.46	30.60 55.08	S17.70 31.86	11.25 20.25	12.85 23.13	4.95 8.91	3.10 5.58	3.65 6.57	B29.85 53.73		13.50 24.30	5.80 10.44	39.55 71.19	19.85 35.73				30.60 55.08	J28.95 52.10	
Los Angeles	E125.00 225.00	A139.75 251.54			P123.25 221.84	P118.25 212.84	P122.00 219.60	P112.95 203.31	Y139.95 251.90	P116.25 209.25			P114.95 206.91	A148.70 267.65	R128.95 232.10	S123.50 222.29	S136.00 244.79	S130.20 234.35	A139.75 251.54	Z144.10 259.38
Louisville	T22.50 40.50	T34.20 61.50			T24.06 43.31	T27.81 50.06	K24.15 43.51		K27.45 49.45			K26.15 47.11	T40.80 73.41	T22.00 39.60	T29.31 52.76	T41.81 76.26	T36.01 64.82	T31.85 57.30	Y43.80 78.80	
Miami	N76.80 138.35	N61.90 111.52	N80.25 144.56		N78.65 141.68	N86.50 155.81	N88.95 160.22	K84.10 151.41	N66.50 119.80	K87.40 157.35		K86.10 155.01	N68.50 123.41	N72.95 131.42	N91.75 165.26	N104.25 187.76	N98.45 177.32		N71.50 128.80	
Milwaukee	23.25 41.85	38.50 69.30	S28.50 51.30		20.75 37.35	15.75 28.35	14.95 26.91	10.95 19.71	B37.75 67.95	13.50 24.30		8.50 15.30	47.45 85.41	27.75 49.95				38.50 69.30	J39.75 71.54	
Muskegon	20.50 36.90	36.40 65.52	S23.50 42.30	9.95 17.91	18.65 33.57	10.75 19.35	8.90 16.02	3.00 5.40	B35.65 64.17	5.80 10.44	8.50 15.30		45.35 81.63	25.65 46.17				36.40 65.52	J34.75 62.54	
Nashville	T33.00 59.40	T39.10 70.35			T33.90 61.02	T34.25 61.65	K34.35 61.81	Y43.70 78.65	T35.45 63.81			K36.35 65.41	T45.70 82.26	T32.50 58.50	T39.15 70.47	T51.65 92.97	T45.85 82.53	T36.75 66.15	Y48.70 87.65	
New York	O24.95 44.90	G26.95 48.50	U44.95 80.90	B26.70 48.06	F34.60 62.28	L38.35 69.03	L43.20 77.76		L39.55 71.19	L47.45 85.40	L45.35 81.63	Q21.15 38.01	Q21.00 37.80	Q19.85 31.73	Q19.85 31.73	Q19.85 31.73	Q19.85 31.73	Q19.85 31.73	G16.15 29.06	
Norfolk	26.20 47.16	11.30 20.31	29.65 53.37	44.95 80.91	28.05 50.49	35.90 64.62	38.40 69.03	43.20 77.76	15.90 28.61	39.55 71.19	47.45 85.41	45.35 81.63		22.35 40.23	41.15 74.07	53.65 96.57	47.85 86.13	8.95 16.11	20.90 37.61	
Philadelphia	B21.35 38.43	G22.15 39.86	F40.15 72.26	B23.20 41.76	F31.10 55.98	F34.85 62.73	F39.70 71.46		F36.05 64.89	F43.95 79.10	F41.85 75.33	Q16.80 30.21	N16.20 29.16	F36.35 65.43	F48.85 87.93	F43.05 77.49			G11.35 20.42	
Pittsburgh	5.15 9.27	13.40 24.12	12.75 22.95	23.95 43.10	7.00 12.60	14.90 26.82	18.65 33.57	23.50 42.30		19.85 35.73	25.65 49.95	22.35 40.23		20.15 36.27	32.65 58.77	26.85 48.33	13.40 24.12	G15.15 27.26		
Richmond	N23.15 41.65	N8.25 14.82	N26.80 47.86	N41.90 75.40	N25.00 44.98	N32.85 59.11	N35.30 63.52	N40.15 72.25	N12.85 23.10	N36.50 65.68	N44.40 79.90	76.12		N19.30 34.72	N38.10 68.56	N50.60 91.06	N44.80 80.62		N17.85 32.10	
St. Louis	F43.70 78.66			W30.50 54.90	W25.70 46.35	W25.70 46.35	W20.40 36.71		W23.70 42.65			W22.40 40.31	F52.65 94.77					F43.70 78.66	G47.65 85.76	
Saginaw-Bay City	15.00 27.00	32.20 57.96	S18.00 32.40	S18.50 33.30	13.15 23.67	5.25 9.45	2.25 4.05		B30.15 54.27				41.15 74.07	20.15 36.27		15.75 28.35	7.95 14.31	32.20 57.96	J29.25 52.64	
Salt Lake City	E93.95 169.10	E109.95 197.90		V92.20 165.94	V87.20 156.95	V87.20 156.95	V81.90 147.41		V85.20 153.35			V83.90 151.01	E118.90 214.01	E97.90 176.20	S92.45 166.40	S104.95 188.90	S99.15 178.46	E109.95 197.90		
San Francisco	E125.00 225.00	A139.75 251.54			P123.25 221.84	P118.25 212.84	P122.00 219.60	P112.95 203.31	Y139.95 251.90	P116.25 209.25			P114.95 206.91	A148.70 267.65	R128.95 232.10	S123.50 222.29	S136.00 244.79	S130.20 234.35	A139.75 251.54	Z144.10 259.38
Sault Ste. Marie	27.50 49.50	44.70 80.46	S30.50 54.90	S31.00 55.80	25.65 46.17	17.75 31.95	17.50 31.50		B42.65 76.77				53.65 96.57	32.65 58.77	15.75 28.35		8.75 15.75	44.70 80.46	J41.75 75.14	
Seattle	H114.00 198.85	H129.25 226.30		H111.50 194.35	H106.50 185.35	H105.70 183.91	H101.70 176.71		H104.25 181.30				H99.25 172.30	H138.20 242.41	H118.50 193.30	S111.75 205.80	S124.25 215.80	S118.45 205.36	H129.25 226.30	



PENNSYLVANIA

Central AIRLINES . . . SERVING MICHIGAN AND VIRGINIA VACATION LANDS



DETROIT · TRAVERSE CITY · SAULT STE. MARIE

Table with columns for flight numbers (71, 72), times, and destinations (Detroit, Traverse City, Sault Ste. Marie).

HUNTERS and FISHERMEN: Sault Ste. Marie is the center for Northern Michigan's and Canada's choicest hunting and fishing grounds.

DETROIT · GRAND RAPIDS · CHICAGO · MILWAUKEE

Table with columns for flight numbers (37, 33, 35, 31, 36, 32, 34, 38), times, and destinations (Detroit, Grand Rapids, Chicago, Milwaukee).

WASHINGTON · MILWAUKEE · NORTHWEST

Table with columns for flight numbers (7, 3-33, 31, 2, 32-8, 10, 34-4), times, and destinations (Washington, Milwaukee, Northwest).

CINCINNATI · DALLAS · SOUTHWEST

Table with columns for flight numbers (18-19, 5-8, 3-8, 9), times, and destinations (Cincinnati, Dallas, Southwest).

#-Daily except Sundays and Holidays. a-Only stops to deplane passengers originating east of Detroit or to receive passengers for Chicago.

NORFOLK · WASHINGTON · BALTIMORE · PITTSBURGH · AKRON · CLEVELAND · DETROIT

Table with columns for flight numbers (1, 9, 52, 7, 41, 19, 3, 5, 11, 2, 6, 51, 8, 42, 10, 18, 4, 4A), times, and destinations (Norfolk, Washington, Baltimore, Pittsburgh, Akron, Cleveland, Detroit).

NORFOLK · WASHINGTON · BALTIMORE · CLEVELAND · CHICAGO · WEST COAST

Table with columns for flight numbers (1, 9, 7, 19, 3, 5, 6, 8, 10, 18, 4, 2), times, and destinations (Norfolk, Washington, Baltimore, Cleveland, Chicago, West Coast).

NORFOLK · WASHINGTON · BALTIMORE · PITTSBURGH · CHICAGO · WEST COAST

Table with columns for flight numbers (1, 7, 7, 19, 5, 5, 2, 2, 6, 42, 10, 10, 4), times, and destinations (Norfolk, Washington, Baltimore, Pittsburgh, Chicago, West Coast).

CHICAGO · MILWAUKEE · DETROIT · CLEVELAND · HARRISBURG · PHILADELPHIA · NEW YORK

Table with columns for flight numbers (38, 34-4, 18, 10, 36, 32-8, 5, 3-33, 19-37, 7, 9, 1), times, and destinations (Chicago, Milwaukee, Detroit, Cleveland, Harrisburg, Philadelphia, New York).

#-Daily except Sundays and Holidays. a-Only stops to deplane passengers originating east of Detroit or to receive passengers for Chicago.

WASHINGTON · HARRISBURG · BUFFALO

Table with columns for flight numbers (7-62, 52, 51, 61-4), times, and destinations (Washington, Harrisburg, Buffalo).

BUFFALO · PITTSBURGH

Table with columns for flight numbers (61, 62), times, and destinations (Buffalo, Pittsburgh).

NORFOLK · PHILADELPHIA · NEW YORK

Table with columns for flight numbers (9, 9, 51-6, 6, 6), times, and destinations (Norfolk, Philadelphia, New York).

FLORIDA and the SOUTHEAST

Table with columns for flight numbers (4-61, 18, 6-51, 19, 7-52, 1), times, and destinations (Florida and the Southeast).

#-Daily except Sundays and Holidays. f-Flag Stop. g-Via Gray Coach Bus Lines Buffalo-Toronto. h-Via Canadian Pacific Ry. Toronto-Buffalo.

Pittsburgh - Charleston, W. Va. Service Temporarily Discontinued



Serving 20 Million People in 20 Cities and 8 States

CONNECTIONS COAST TO COAST

