

P

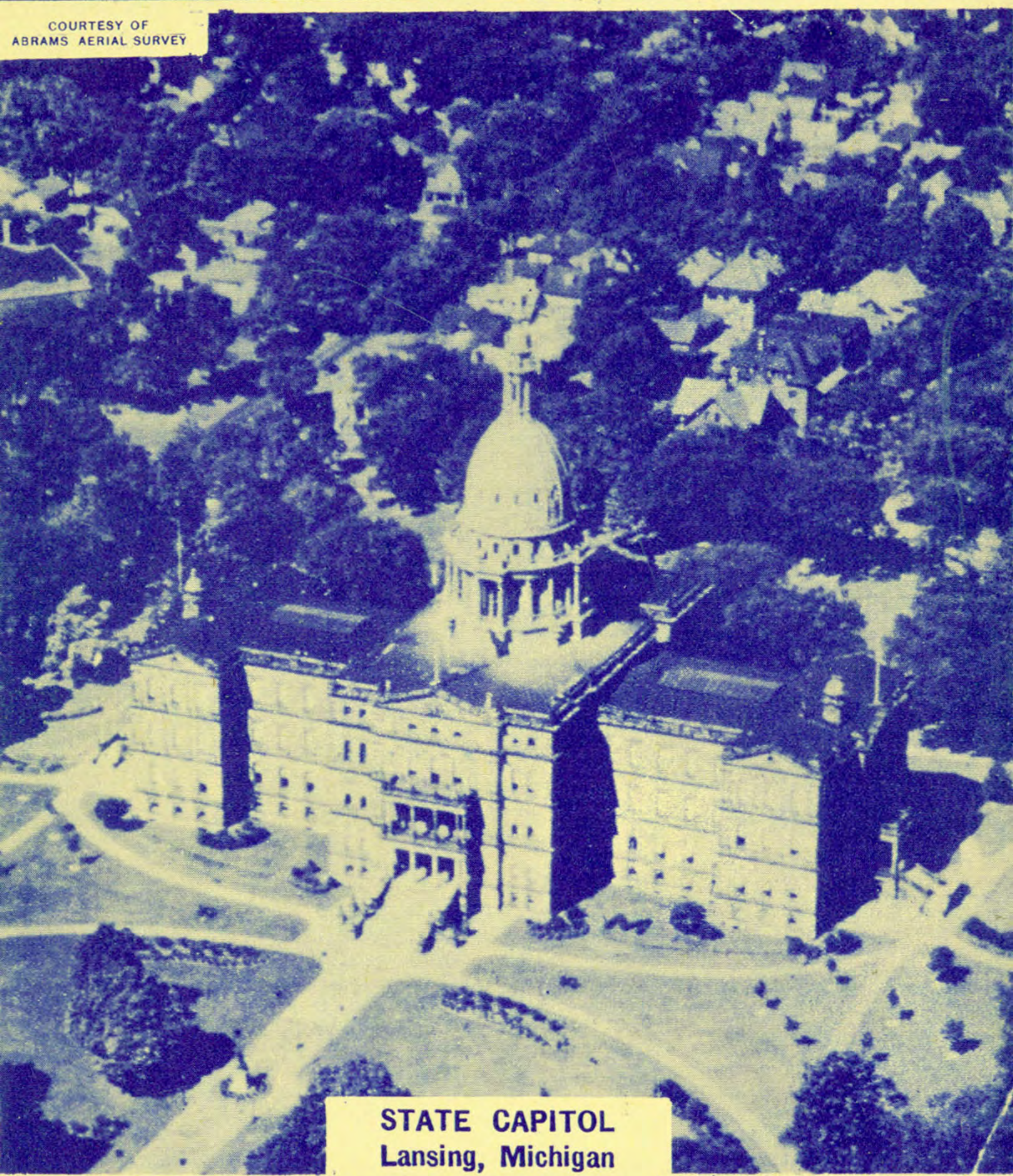
EFFECTIVE FEBRUARY 1, 1939

PENNSYLVANIA

Central AIRLINES

SERVING THE CAPITALS OF INDUSTRY

COURTESY OF
ABRAMS AERIAL SURVEY



STATE CAPITOL
Lansing, Michigan

SAULT STE. MARIE
WASHINGTON
CLEVELAND
CHICAGO
DETROIT
AKRON
NORFOLK
PITTSBURGH
WILLIAMSPORT

SAGINAW-BAY CITY
HARRISBURG
MILWAUKEE
MUSKEGON
LANSING
BUFFALO
BALTIMORE
GRAND RAPIDS
TRAVERSE CITY

