

FLIGHT SCHEDULES

EFFECTIVE
MAY 1, 1945



FLY DIRECT *Between* CHICAGO • AND •



NOW...

More Flights Daily
to Speed Essential
Travel to America's
Victory Cities.



FLY DIRECT

Between **CHICAGO**

• AND •



★
NOW...

**More Flights Daily
to Speed Essential
Travel to America's
Victory Cities.**

EXPLANATION OF REFERENCE MARKS

- ‡—Via connecting Airlines.
- †Via Washington
- (O)—Stop deferred pending airport improvements.
- * Complimentary meal served aloft.
- ‡ Complimentary Light Refreshments.
- AA American Airlines.
- BNF Braniff Airways
- C&S Chicago and Southern
- DAL Delta Airlines
- EAL Eastern Airlines.
- NWA Northwest Airlines.
- TWA Transcontinental and Western Air.
- UAL United Air Lines.

ROUTES SUSPENDED

Service is suspended indefinitely on the following routes:
 Detroit-Sault Ste. Marie. Norfolk-Knoxville.
 Grand Rapids-Traverse City.

GENERAL INFORMATION

HEADQUARTERS—Pennsylvania - Central Airlines general offices are located at the Washington National Airport, Washington, D. C.; C. Bedell Monro, President.

GENERAL—All service is subject to the rules and regulations contained in Local and Joint Passenger Tariff No. 2, as amended, on file with the Civil Aeronautics Board, copies of which are open for public inspection in any Pennsylvania-Central Airlines office.

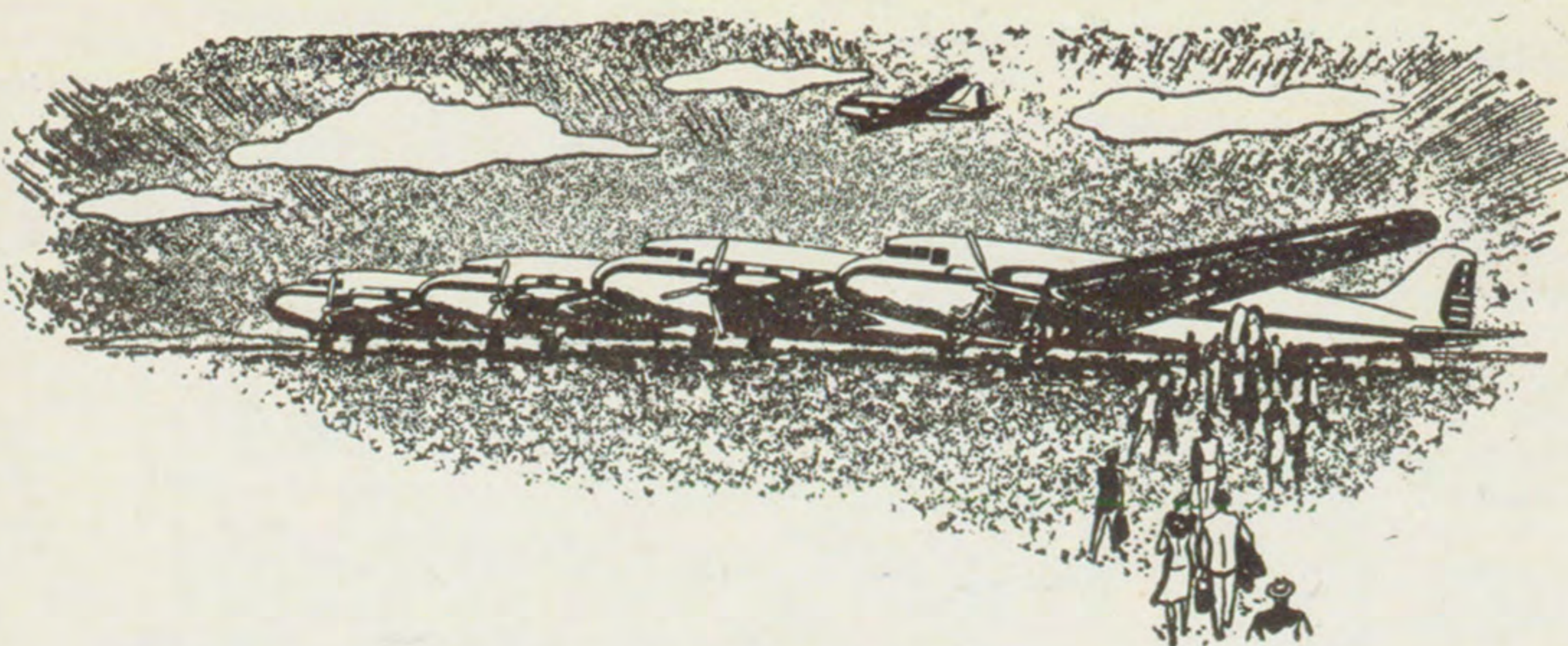
SCHEDULES—Pennsylvania - Central Airlines Corporation will not be responsible for errors or omissions in schedules, inconvenience or damage resulting from delays to planes or failure to make connections, and also reserves the right to vary from the times shown, without advance notice to the public.

EQUIPMENT—DC3 21-passenger Capitaliners used on all flights.

RESERVATIONS—All space is reserved, though no definite seat assignments are made. Reservations will not be held unless tickets are purchased three hours before scheduled departure time of flights departing between the hours of 10:01 AM and 12:00 midnight or by 9:00 PM on the day prior to departure of any flight scheduled to depart between the hours of 12:01 AM and 10:00 AM.

TICKET OFFICES

- AKRON, OHIO..... Airport Ticket Office, Phone Stadium 5461
- BALTIMORE, MD..... Airport Ticket Office, Phone Riverside 1800
- BIRMINGHAM, ALA..... Tutwiler Hotel Lobby, Phone 9-6118
- BUFFALO, N. Y..... Genesee Building, Phone Taylor 3400
- CHATTANOOGA, TENN..... Hotel Patten, Phone 2-1169
- CHICAGO, ILL..... 112 W. Adams St. (Field Bldg.), Phone Andover 5900
- CLARKSBURG, W. VA..... Airport Ticket Office, Phone 142
- CLEVELAND, OHIO..... Cleveland Hotel, Phone Clearwater 3600
- DETROIT, MICH..... 1203 Washington Blvd., Phone Cherry 9300
- ERIE, PA..... Airport Ticket Office, Phone 36441
- FLINT, MICH..... Airport Ticket Office, Phone 2-5500
- GRAND RAPIDS, MICH..... Morton Hotel, Phone 59241
- HARRISBURG, PA..... Airport Ticket Office Phone 6-2151
- HUNTSVILLE, ALA..... Airport Ticket Office, Phone 2070
- KNOXVILLE, TENN..... Andrew Johnson Hotel, Phone 4-1811
- LANSING, MICH..... Airport Ticket Office, Phone 2-1163
- MILWAUKEE, WIS..... Airport Ticket Office, Phone Sheridan 3323
- MORGANTOWN, W. VA..... Airport Ticket Office, Phone 7000
- MUSKEGON, MICH..... Airport Ticket Office, Phone 3-2151
- NORFOLK, VA..... Monticello Hotel Lobby, Naval Operating Base, Phone 4-8321
- PITTSBURGH, PA..... Airport Ticket Office, Phone Homestead 1300
 Wm. Penn Hotel, Phone Grant 6100
- TRI-CITIES..... Airport Ticket Office, Phone 6-5000
- WASHINGTON, D. C..... Statler Hotel Lobby, Phone Republic 7070
 Willard Hotel Lobby
- YOUNGSTOWN, OHIO..... Airport Ticket Office, Phone 35411



New PCA Service
for
20,800,000 Americans

1 **DETROIT . . . CHICAGO**

Non-stop

In addition to serving their vast network of American Victory Cities PCA has recently inaugurated a vitally important service for essential travel between Chicago and Detroit—14 non-stop flights daily, linking Chicago by direct PCA flights to Detroit, Cleveland, Pittsburgh, Washington, Norfolk, and other war-busy cities.

2 **NEW YORK To the WEST
and SOUTH**

PCA will soon open direct non-stop service from New York to Pittsburgh, providing a new, much needed route to Detroit, Cleveland, Chicago and the West—and from New York to Chattanooga, Knoxville, Birmingham and the South.

For Air Travel—**ANYWHERE**



SAVING TIME THROUGH FLIGHT FOR OVER 18 YEARS

COMPLETE SYSTEM SCHEDULES

CHICAGO • DETROIT • CLEVELAND • PITTSBURGH • WASHINGTON • NORFOLK Milwaukee • Muskegon • Grand Rapids • Lansing • Flint • Youngstown • Akron • Baltimore

	4 Daily	6 Daily	8 Daily	10 Daily	16 Daily	18 Daily	20 Daily	22 Daily	24 Daily	26 Daily	28 Daily	34 Daily	42 Daily	36 Daily	38 Daily	40 Daily	48 Daily	50 Daily	52 Daily	54 Daily	56 Daily	58 Daily	64 Daily	66 Daily	68 Daily	70 Daily	72 Daily	2 Daily	Daily	
CHICAGO.....(CWT) Lv	AM				AM	AM	AM	AM	AM	AM	PM	AM	PM	AM	PM	PM	PM	PM	PM	PM	PM	PM	PM	PM	PM	PM	PM	PM	PM	Lv (CWT).....CHICAGO
MILWAUKEE.....Lv																														Lv.....MILWAUKEE
MUSKEGON.....Ar																														Ar.....MUSKEGON
MUSKEGON.....Lv																														Lv.....MUSKEGON
GRAND RAPIDS.....Ar																														Ar.....GRAND RAPIDS
GRAND RAPIDS.....Lv																														Lv.....GRAND RAPIDS
LANSING.....(EWT) Ar																														Ar (EWT).....LANSING
LANSING.....Lv																														Lv.....LANSING
FLINT.....Ar																														Ar.....FLINT
FLINT.....Lv																														Lv.....FLINT
DETROIT.....Ar																														Ar.....DETROIT
DETROIT.....Lv																														Lv.....DETROIT
CLEVELAND.....Ar		6 40	*7 00		8 20																									Ar.....CLEVELAND
CLEVELAND.....Lv		7 20			9 00																									Lv.....CLEVELAND
AKRON.....Ar		7 35			9 12																									Ar.....AKRON
AKRON.....Lv		7 55																												Lv.....AKRON
YOUNGSTOWN.....Ar		*8 00																												Ar.....YOUNGSTOWN
YOUNGSTOWN.....Lv					9 44																									Lv.....YOUNGSTOWN
PITTSBURGH.....Ar		8 42	8 23		10 27																									Ar.....PITTSBURGH
PITTSBURGH.....Lv		8 57	8 35		10 40																									Lv.....PITTSBURGH
BALTIMORE.....Ar					11 58																									Ar.....BALTIMORE
BALTIMORE.....Lv					12 03																									Lv.....BALTIMORE
WASHINGTON.....Ar		10 07	9 45		12 26																									Ar.....WASHINGTON
WASHINGTON.....Lv		10 30	10 00		11 30																									Lv.....WASHINGTON
NORFOLK.....(EWT) Ar		10 10	11 35	11 05	12 35	1 55																								Ar (EWT).....NORFOLK

NORFOLK • WASHINGTON • PITTSBURGH • CLEVELAND • DETROIT • CHICAGO Baltimore • Akron • Youngstown • Flint • Lansing • Grand Rapids • Muskegon • Milwaukee

	1 Daily	3 Daily	5 Daily	7 Daily	9 Daily	11 Daily	17 Daily	19 Daily	21 Daily	23 Daily	25 Daily	27 Daily	29 Daily	31 Daily	37 Daily	39 Daily	41 Daily	43 Daily	45 Daily	47 Daily	55 Daily	57 Daily	59 Daily	61 Daily	63 Daily	65 Daily	67 Daily	Daily	Daily	
NORFOLK.....(EWT) Lv	AM				AM	AM	AM	PM	PM	AM	AM	AM	AM	PM	PM	PM	PM	PM	PM	PM	PM	PM	PM	PM	PM	PM	PM	PM	PM	Lv (EWT).....NORFOLK
WASHINGTON.....Ar					6 50	*7 25	8 45																							Ar.....WASHINGTON
WASHINGTON.....Lv					7 13																									Lv.....WASHINGTON
BALTIMORE.....Ar					7 18																									Ar.....BALTIMORE
BALTIMORE.....Lv					*7 18																									Lv.....BALTIMORE
PITTSBURGH.....Ar					8 46	8 45	10 05																							Ar.....PITTSBURGH
PITTSBURGH.....Lv					8 59	9 10	10 20																							Lv.....PITTSBURGH
YOUNGSTOWN.....Ar					9 37																									Ar.....YOUNGSTOWN
YOUNGSTOWN.....Lv					9 42																									Lv.....YOUNGSTOWN
AKRON.....Ar							11 02																							Ar.....AKRON
AKRON.....Lv							11 07																							Lv.....AKRON
CLEVELAND.....Ar					10 14		11 27																							Ar.....CLEVELAND
CLEVELAND.....Lv					10 30		11 39																							Lv.....CLEVELAND
DETROIT.....Ar					11 12	10 40	12 21																							Ar.....DETROIT
DETROIT.....Lv		*7 10	*8 00		*8 10	10 55	*12 40	1 00																						Lv.....DETROIT
FLINT.....Ar																														Ar.....FLINT
FLINT.....Lv																														Lv.....FLINT
LANSING.....Ar																														Ar.....LANSING
LANSING.....Lv																														Lv.....LANSING
GRAND RAPIDS.....(CWT) Ar																														Ar (CWT).....GRAND RAPIDS
GRAND RAPIDS.....Lv																														Lv (CWT).....GRAND RAPIDS
MUSKEGON.....Ar																														Ar.....MUSKEGON
MUSKEGON.....Lv																														Lv.....MUSKEGON
MILWAUKEE.....Ar																														Ar.....MILWAUKEE
CHICAGO.....(CWT) Ar																														Ar (CWT).....CHICAGO

PITTSBURGH • BIRMINGHAM

142 Daily	140 Daily		141 Daily	143 Daily
PM	AM		PM	PM
4 00	9 00	Lv PITTSBURGH.....Ar	1 12	8 11
4 27	9 27	Ar MORGANTOWN.....Ar	12 47	
4 32	9 32	Lv MORGANTOWN.....Ar	12 42	
4 50	9 50	Ar CLARKSBURG.....Lv	12 24	
*5 00	10 00	Lv CLARKSBURG.....Ar	12 19	
6 30	11 30	Ar TRI-CITIES.....Lv	*10 41	*6 11
6 40	11 40	Lv TRI-CITIES.....(EWT) Ar	10 31	6 01
6 25	11 25	Ar KNOXVILLE.....(CWT) Lv	8 48	4 18
6 40	*11 35	Lv KNOXVILLE.....Ar	8 38	4 08
7 20	12 15	Ar CHATTANOOGA.....Lv	*8 00	3 30
7 25	12 20	Lv CHATTANOOGA.....Ar	7 55	3 25
.....	1 05	Lv HUNTSVILLE.....Lv		2 48
8 23	1 43	Ar BIRMINGHAM.....(CWT) Lv	*7 00	2 05
PM	PM		AM	PM

Now... **NEW DAILY SERVICE**

between

**Washington - Baltimore -
Harrisburg - Buffalo**

Norfolk • Washington • Pittsburgh • Buffalo

57-103 Daily	READ DOWN 29-101 Daily	23 Daily		100-6 Daily	READ UP 42-36 Daily	102-50 Daily
PM	AM	AM		AM	M	PM
5 25	*11 55	8 50	Lv NORFOLK.....Ar	11 35	6 15	9 20
6 30	1 00	9 55	Ar WASHINGTON.....Lv	10 30	5 10	8 15
6 50	1 20	10 20	Lv WASHINGTON.....Ar	10 07	4 43	8 00
		10 43	Ar BALTIMORE.....Lv		4 20	
		10 48	Lv BALTIMORE.....Ar	*10 43	4 15	
		11 21	Ar HARRISBURG.....Lv		3 42	
		*11 31	Lv HARRISBURG.....Ar		3 32	
8 10	2 40		Ar PITTSBURGH.....Lv	8 57		6 50
8 45	3 00		Lv PITTSBURGH.....Ar	8 43		6 37
	3 53		Ar ERIE.....Lv	7 50		
	3 58		Lv ERIE.....Ar	7 45		
10 07	4 38	1 11	Ar BUFFALO.....Lv	*7 00	2 0	