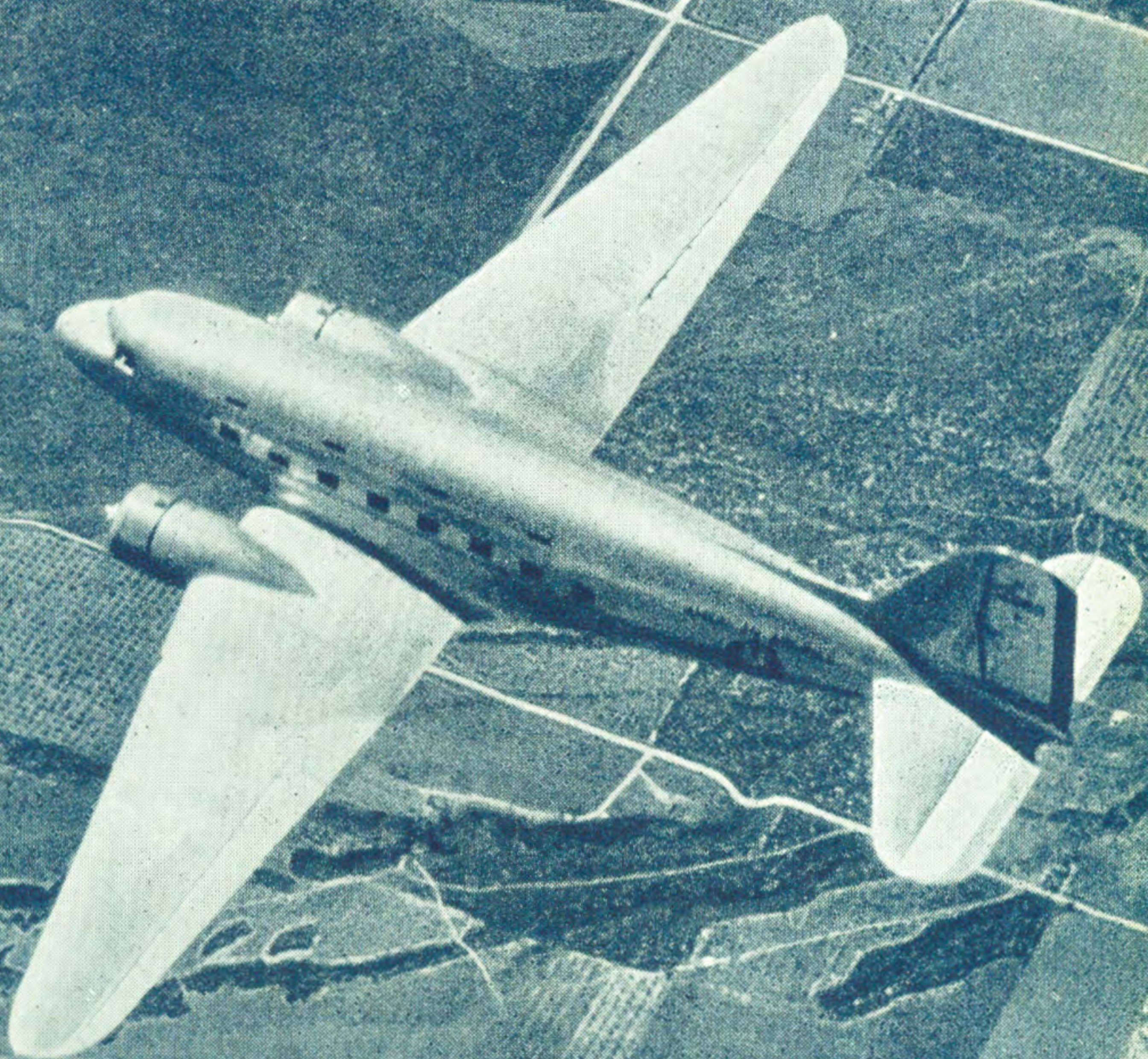


CANADIAN COLONIAL AIRWAYS



TIME TABLE

SERVICES DAILY

(EXCEPT SUNDAY)

MONTREAL - NEWARK



Helpful Data for Passengers

EQUIPMENT: Comfortable cabin planes equipped with all proven safety devices to air navigation, including two-way radio telephone.

BAGGAGE: Thirty-five pounds allowed free with each ticket. Excess up to twenty pounds at 1/2 of 1% of air fare.

Tickets are sold subject to compliance with U.S. immigration regulations.

Airport Transportation

MONTREAL: Taxis at \$1.00 per passenger are available for transportation to and from St. Hubert Airport. (Call Company Office.)

OTTAWA: Taxis at 75c per person are available to and from Rockcliffe Airport and Chateau Laurier.

ALBANY: Taxis are available to and from Municipal Airport. (To Albany, Troy and Schenectady \$1.00.)

NEW YORK: From Newark Airport to 45 Vanderbilt Ave., or from 45 Vanderbilt Ave. to the Newark Airport, \$1.00 per passenger.

NEWARK: Taxi service to and from airport at reasonable rates.

CUSTOMS: The usual immigration and customs examinations will be made at St. Hubert Airport northbound and the Albany Municipal Airport, Albany, N.Y., southbound.

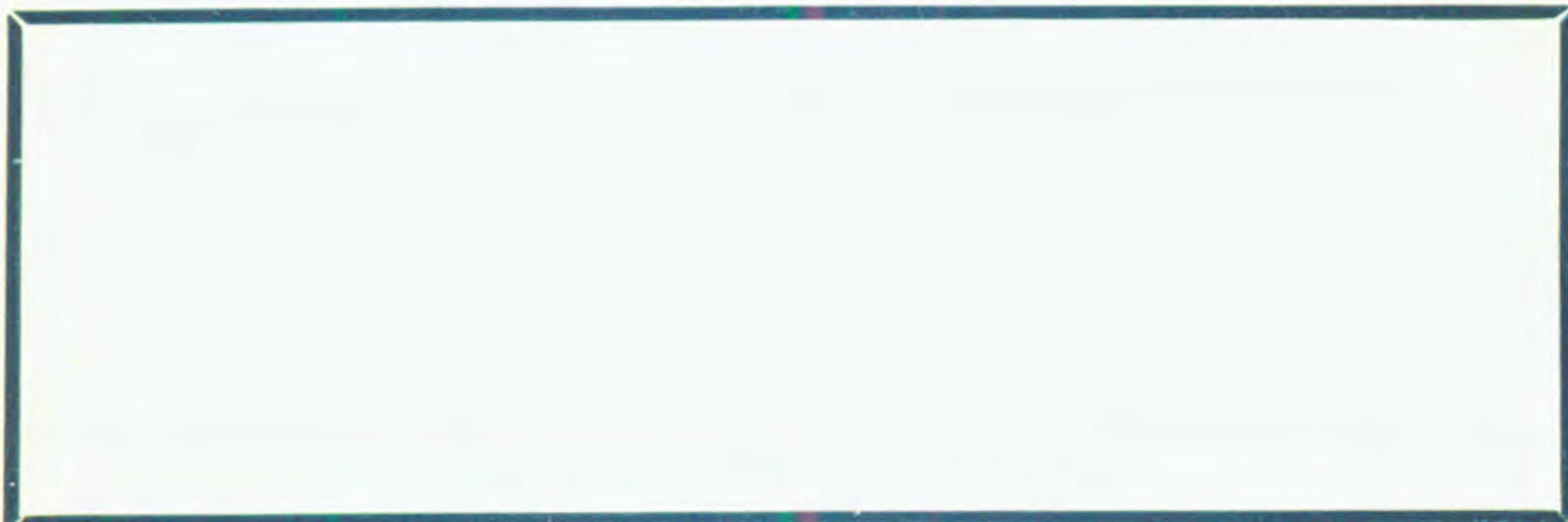


CANADIAN COLONIAL AIRWAYS, LTD.

MONTREAL
PLateau 2501

ALBANY
2-4466

NEW YORK
VAnderbilt 3-2580



CANADIAN COLONIAL AIRWAYS



TIME TABLE

TRAVEL BY AIR OTTAWA - MONTREAL - NEW YORK

SERVICES DAILY EXCEPT SUNDAY

*** All Times shown are Eastern Standard ***

GIANT DOUGLAS PLANES

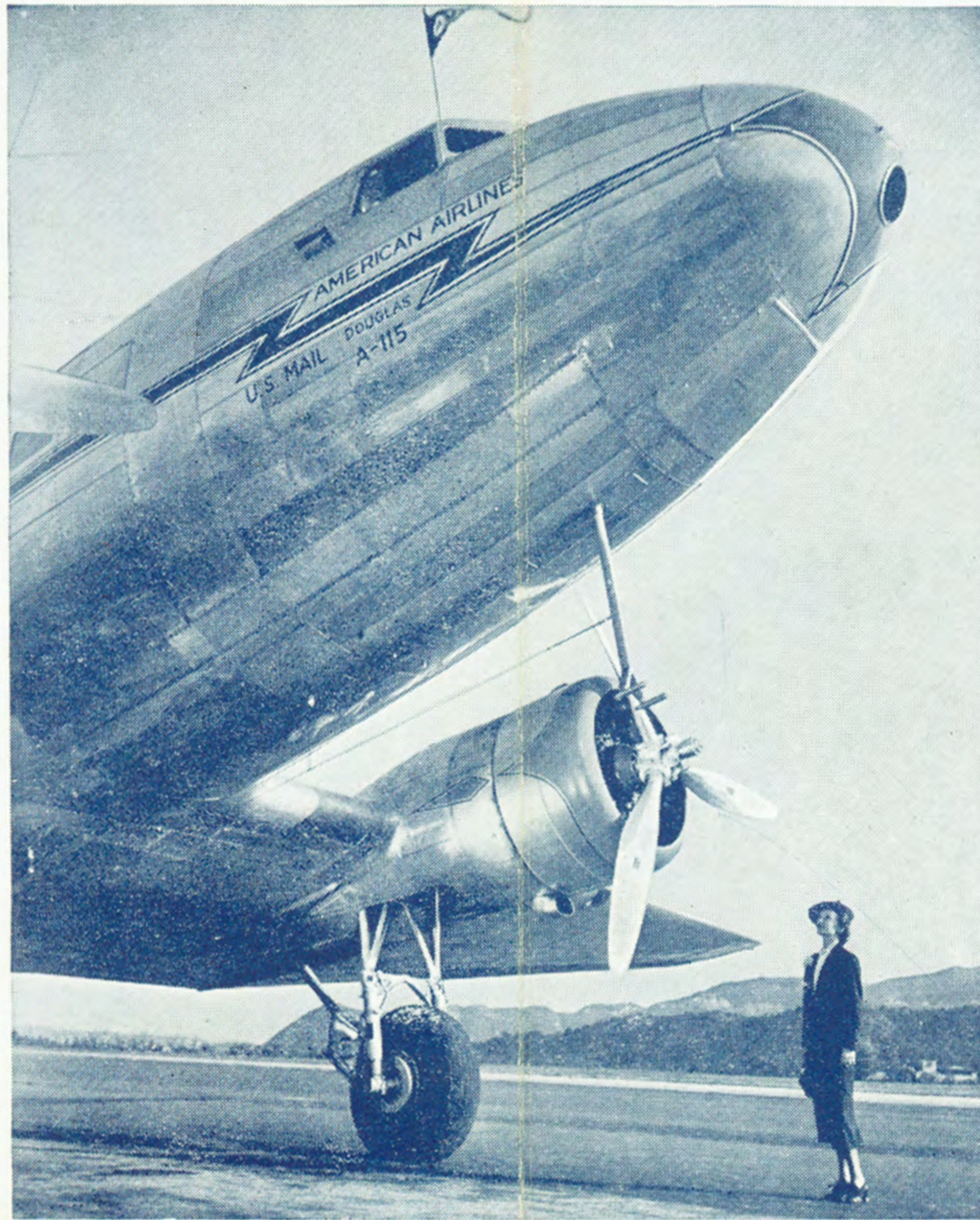
MONTREAL
NEW YORK

CONNECTIONS

At **NEWARK** For

- Chicago and Pacific Coast.
- Nashville, Memphis, Dallas and Los Angeles.
- Philadelphia, Baltimore, Washington and New Orleans.
- Miami and the West Indies.

Also For • **WINNIPEG**
and • **VANCOUVER**



FLY AMERICAN
AIRLINES
SLEEPER PLANES From
NEWARK
to the
**PACIFIC
COAST**

Spend the Evening in
NEW YORK

Leave New York... 1.00 a.m.
Standard Time.

Arrive Chicago... 5.30 a.m.
Central Time.

Why not
TRAVEL BY AIR
and give yourself a longer
vacation?

Going . . .
to **FLORIDA**
the Sunny South
OR
to **CALIFORNIA**
this Winter?

MONTREAL - NEW YORK . . .

Read Down
SOUTHBOUND

2.10 p.m.
2.50 p.m.
4.10 p.m.
4.25 p.m.
5.25 p.m.

Lv.
Lv.
Ar.
Lv.
Ar.

Daily except Sunday—
Eastern Standard Time

.....MOUNT ROYAL HOTEL.....Ar.
.....ST. HUBERT AIRPORT.....Ar.
.....ALBANY AIRPORT.....Lv.
.....ALBANY AIRPORT.....Ar.
.....NEWARK AIRPORT.....Lv.

Read Up
NORTHBOUND

11.50 a.m.
11.10 a.m.
9.45 a.m.
9.35 a.m.
8.30 a.m.

RATES: New York, one way \$23⁴⁰ return \$42¹⁰ - Albany, one way \$14⁴⁰ return \$25⁹⁰

MONTREAL - OTTAWA . . . 55 Minutes

Lv. Montreal . . 11.40 a.m. . . Ar. Ottawa . . 12.35 p.m. Lv. Ottawa . . 1.30 p.m. . . Ar. Montreal . . 2.25 p.m.

RATES: \$7.00 one way — \$12.60 return

CANADIAN COLONIAL AIRWAYS

LIMITED

MOUNT ROYAL HOTEL
MONTREAL - Plateau 2501

Or your Travel Agent

OTTAWA - C.N.R. Chateau Ticket
Office, **QUEEN 4328**
City Ticket Office, **QUEEN 904**