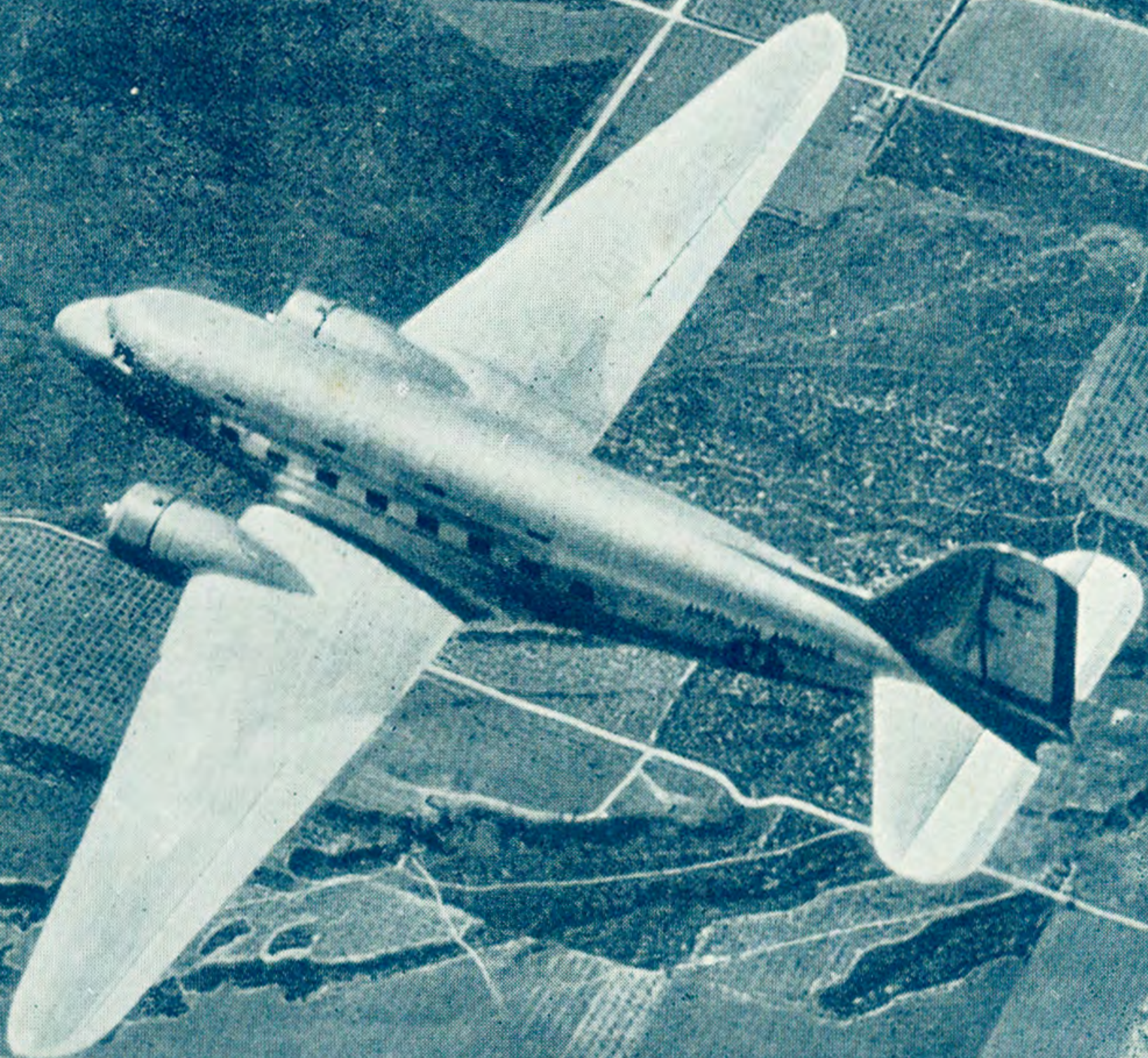


CANADIAN COLONIAL AIRWAYS



TIME TABLE

SERVICES DAILY

(EXCEPT SUNDAY)

MONTREAL - NEWARK



Helpful Data for Passengers

EQUIPMENT: DOUGLAS planes equipped with all proven safety devices to air navigation, including two-way radio telephone. Crew consists of Capt. Pilot - 1st Officer and Stewardess.

BAGGAGE: Thirty-five pounds allowed free with each ticket. Excess up to twenty pounds at 1/2 of 1% of air fare.

Tickets are sold subject to compliance with U.S. immigration regulations.

Airport Transportation

MONTREAL: Taxis at \$1.00 per passenger are available for transportation to and from St. Hubert Airport. (Call Company Office.) Passengers picked up and delivered to Windsor, Mt. Royal or Ritz Hotels.

ALBANY: Taxis are available to and from Municipal Airport. (To Albany, Troy and Schenectady \$1.00 per passenger.)

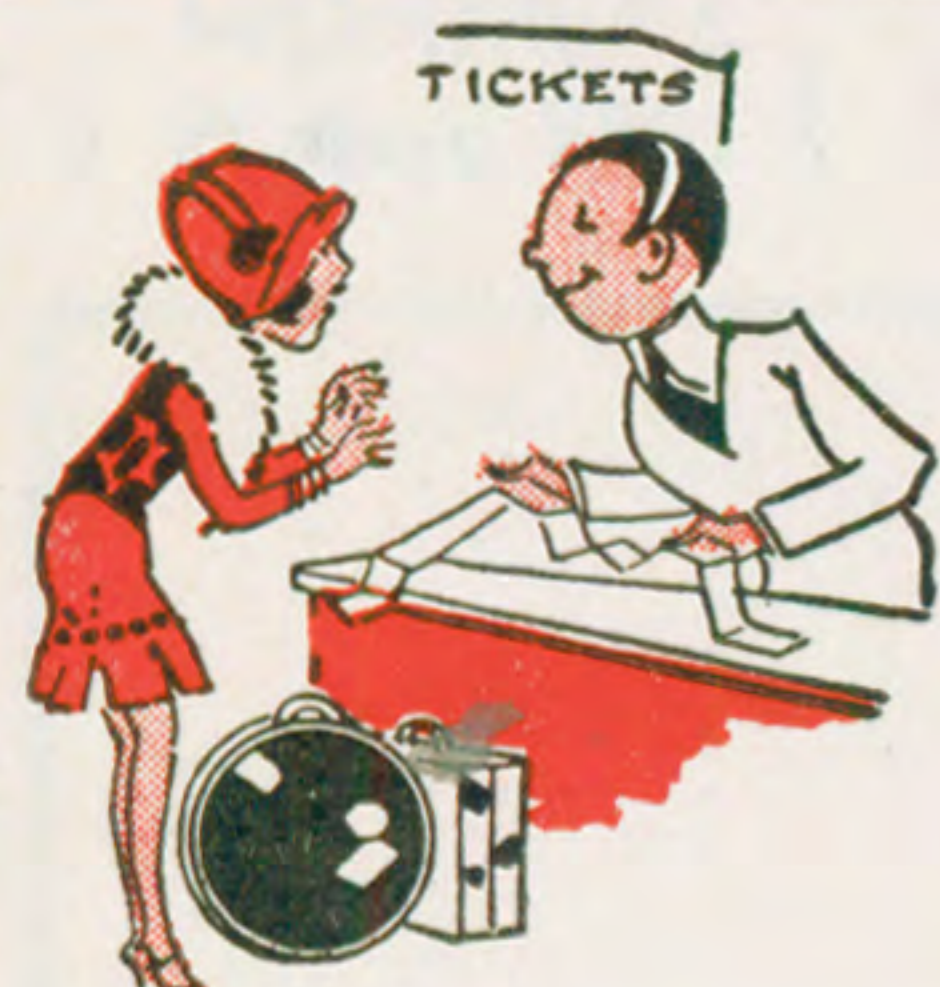
NEW YORK: From Newark Airport to 45 Vanderbilt Ave., or from 45 Vanderbilt Ave. to the Newark Airport, \$1.00 per passenger.

NEWARK: Taxi service to and from airport at reasonable rates.

CUSTOMS: The usual immigration and customs examinations will be made at St. Hubert Airport northbound and the Albany Municipal Airport, Albany, N.Y., southbound.



CANADIAN COLONIAL AIRWAYS, LTD.



AIR TICKETS

— ON —

ALL AIRLINES

RESERVATIONS & INFORMATION

AIRLINES TICKET AGENCY

OF E. K. SMITH, Inc. — 41 E. 47th ST.

ELdorado 5-2300

CANADIAN COLONIAL AIRWAYS



TIME TABLE

TRAVEL BY AIR MONTREAL - ALBANY - NEW YORK

SERVICES DAILY EXCEPT SUNDAY

*** All Times shown are Eastern Standard ***

GIANT DOUGLAS PLANES

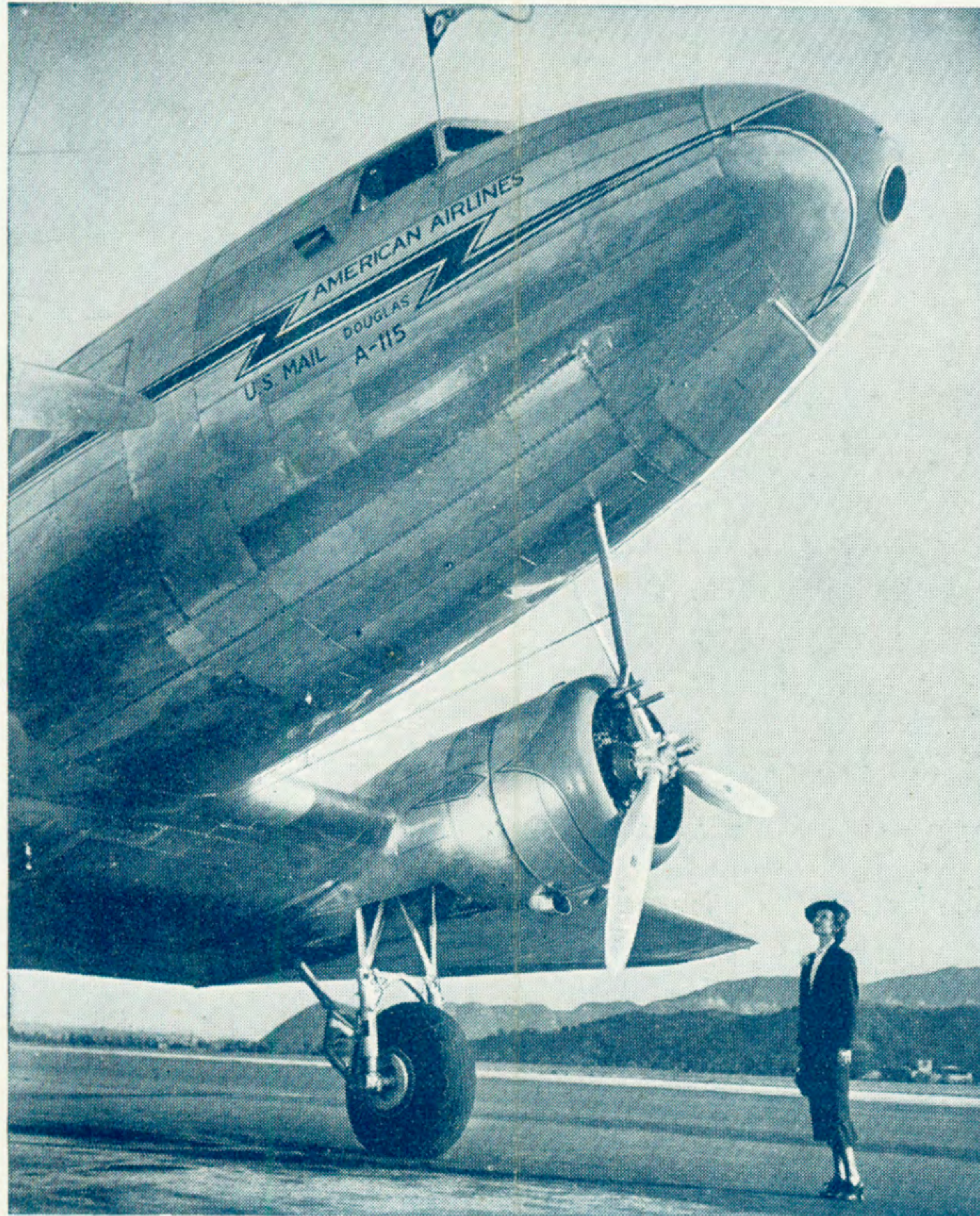
MONTREAL
NEW YORK

CONNECTIONS

At **NEWARK** For

- Chicago and Pacific Coast.
- Nashville, Memphis, Dallas and Los Angeles.
- Philadelphia, Baltimore, Washington and New Orleans.
- Miami and the West Indies.

Also For • **WINNIPEG**
and • **VANCOUVER**



WHY NOT
Travel by **AIR**

FLY AMERICAN
AIRLINES
SLEEPER PLANES From

NEWARK
to the
**PACIFIC
COAST**

Spend the Evening in
NEW YORK

Leave New York. 12.45 a.m.
Standard Time.

Arrive Chicago... 5.37 a.m.
Central Time.

MONTREAL - NEW YORK...

Read Down
SOUTHBOUND

Daily except Sunday—
EASTERN STANDARD TIME

Read Up
NORTHBOUND

4.05 p.m.	Lv.	MOUNT ROYAL HOTEL*	...Ar.	11.40 a.m.
4.45 p.m.	Lv.	ST. HUBERT AIRPORT	...Ar.	11.00 a.m.
6.05 p.m.	Ar.	ALBANY AIRPORTLv.	9.40 a.m.
6.20 p.m.	Lv.	ALBANY AIRPORTAr.	9.30 a.m.
7.20 p.m.	Ar.	NEWARK AIRPORTLv.	8.30 a.m.

RATES: New York, one way \$23^{·40} return \$42^{·10} - Albany, one way \$14^{·40} return \$25^{·90}

* Passengers picked up and delivered to Windsor, Mt. Royal or Ritz Hotels

CANADIAN COLONIAL AIRWAYS

LIMITED

MOUNT ROYAL HOTEL
MONTREAL

Or your Travel Agent

TELEPHONE:
PLateau 2501