

# CANADIAN COLONIAL AIRWAYS



**REDUCED FARES**  
— TO —  
**MONTREAL**  
**ONE WAY**      **ROUND TRIP**  
18.25                      32.85  
*The International Scenic  
Route*

•  
**CANADIAN COLONIAL AIRWAYS Inc.**  
45 Vanderbilt Ave., N. Y. C.

## TIME TABLE

JULY 1, 1938

# SERVICES DAILY

(EXCEPT SUNDAY)

## MONTREAL - NEWARK



### Helpful Data for Passengers

**EQUIPMENT:** DOUGLAS planes equipped with all proven safety devices to air navigation, including two-way radio telephone. Crew consists of Capt. Pilot - 1st Officer and Stewardess.

**BAGGAGE:** Thirty-five pounds allowed free with each ticket. Excess up to twenty-pounds at 1/2 of 1% of air fare.

Tickets are sold subject to compliance with U.S. immigration regulations.

### Airport Transportation

**MONTREAL:** Taxis at \$1.00 per passenger are available for transportation to and from St. Hubert Airport. (Call Company Office.) Passengers picked up and delivered to Windsor, Mt. Royal or Ritz Hotels.

**ALBANY:** Taxis are available to and from Municipal Airport. (To Albany, Troy and Schenectady \$1.00 per passenger.)

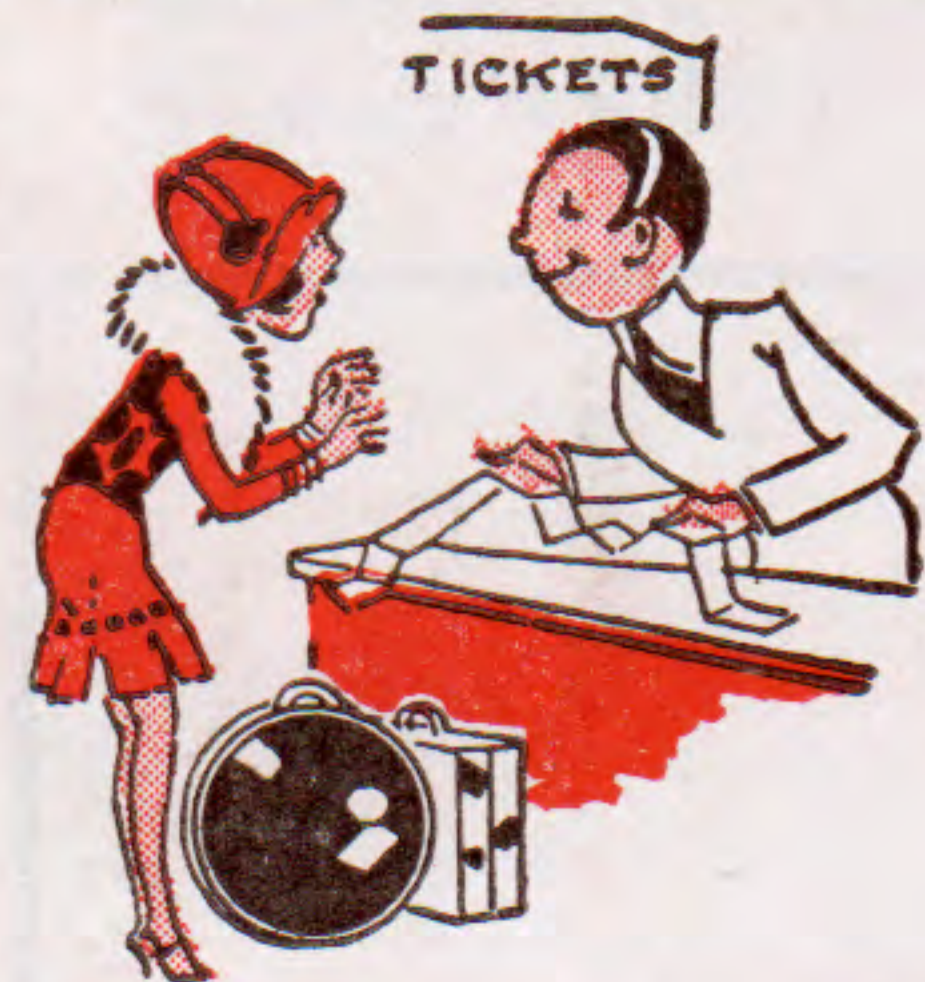
**NEW YORK:** From Newark Airport to 45 Vanderbilt Ave., or from 45 Vanderbilt Ave. to the Newark Airport, \$1.00 per passenger.

**NEWARK:** Taxi service to and from airport at reasonable rates.

**CUSTOMS:** The usual immigration and customs examinations will be made at St. Hubert Airport northbound and the Albany Municipal Airport, Albany, N.Y., southbound.



## CANADIAN COLONIAL AIRWAYS, LTD.



### AIR TICKETS

— ON —

### ALL AIRLINES

RESERVATIONS & INFORMATION

AIRLINES TICKET AGENCY

OF E. K. SMITH, Inc. — 41 E. 47th ST.

ELdorado 5-2300

# CANADIAN COLONIAL AIRWAYS



### REDUCED FARES

— TO —

### MONTREAL

ONE WAY

18.25

ROUND TRIP

32.85

*The International Scenic Route*

CANADIAN COLONIAL AIRWAYS Inc.  
45 Vanderbilt Ave., N. Y. C.

# TIME TABLE

JULY 1, 1938

# MONTREAL - NEW YORK SCHEDULE

(2 SERVICES DAILY - EXCEPT SUNDAY)

Read Down—SOUTHBOUND		EASTERN STANDARD TIME		Read Up—NORTHBOUND	
7.15 a.m.	4.05 p.m.⊖	Lv. ....	MOUNT ROYAL HOTEL★.....	Ar.	11.40 a.m. 7.30 p.m.
8.00 a.m.	4.45 p.m.	Lv. ....	ST. HUBERT AIRPORT .....	Ar.	11.00 a.m. 6.50 p.m.
<b>NON STOP</b>	6.05 p.m.	Ar. ....	ALBANY AIRPORT .....	Lv.	9.40 a.m. <b>NON STOP</b>
	6.20 p.m.	Lv. ....	ALBANY AIRPORT .....	Ar.	9.30 a.m.
10.05 a.m.	7.20 p.m.	Ar. ....	NEWARK AIRPORT.....	Lv.	8.30 a.m. 4.45 p.m.⊖

## New Summer Rates - New York

**ONE WAY .. \$18.25** ● **RETURN .. \$32.85**

★ Passengers picked up and delivered to Windsor, Mt. Royal or Ritz Hotels  
 ⊖ Complimentary Meals served aloft

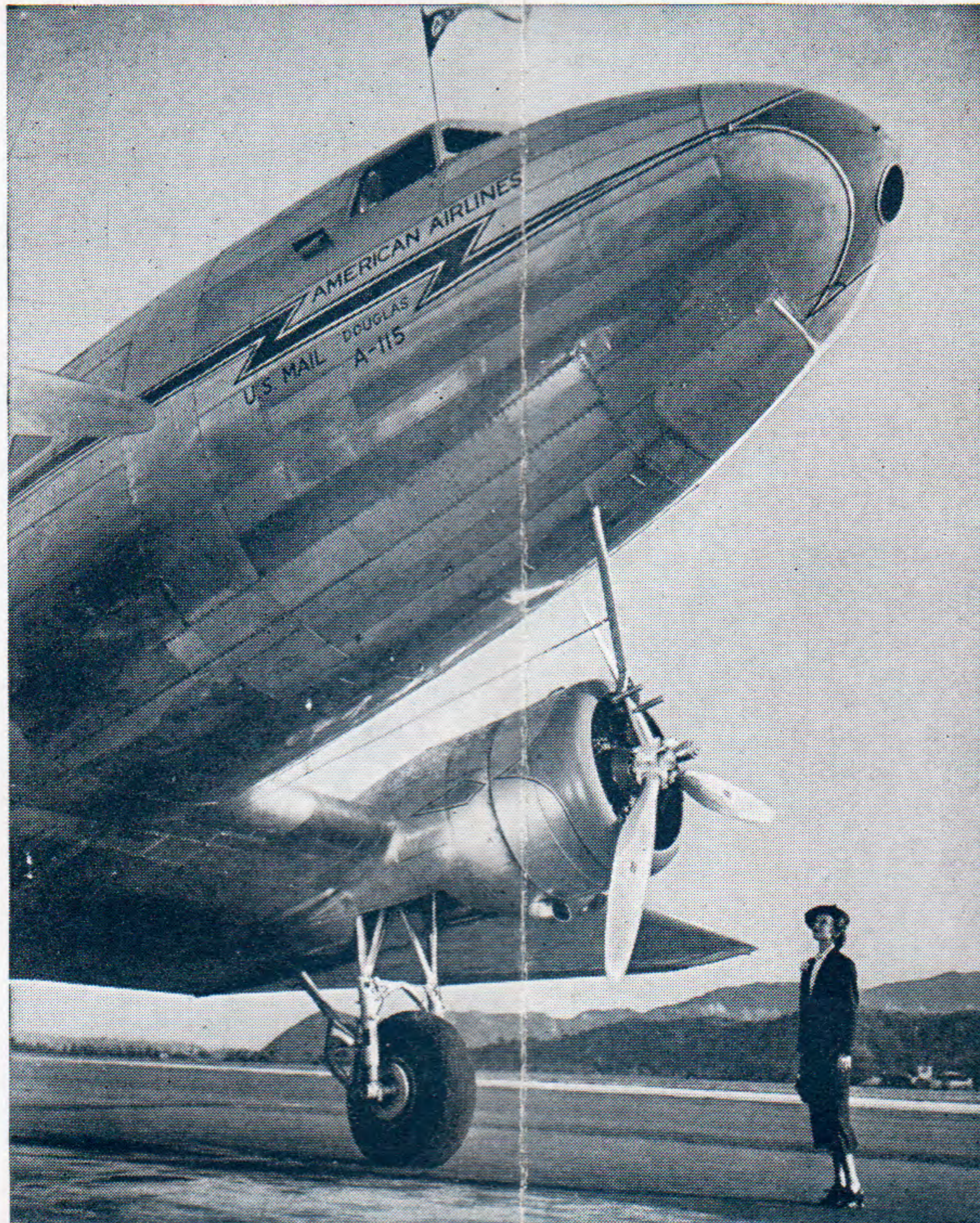
### GIANT DOUGLAS PLANES

**MONTREAL NEW YORK**

#### CONNECTIONS At NEWARK For

- Chicago and Pacific Coast.
- Nashville, Memphis, Dallas and Los Angeles.
- Philadelphia, Baltimore, Washington and New Orleans.
- Miami and the West Indies.

Also For • WINNIPEG and • VANCOUVER



### MONTREAL NEW YORK by AIR

Flying over such famous beauty spots as

- LAKE CHAMPLAIN
- LAKE GEORGE
- SARATOGA SPRINGS
- HUDSON RIVER VALLEY
- WESTPOINT
- POUGHKEEPSIE

- The NEW NON-STOP Schedule permits you to leave Montreal in the morning . . . spend half a day in New York . . . and be home that evening.

# CANADIAN COLONIAL AIRWAYS

LIMITED

MOUNT ROYAL HOTEL  
MONTREAL

Or your Travel Agent

TELEPHONE:  
PLateau 2501