

EFFECTIVE APRIL 25, 1948

COLONIAL AIRLINES

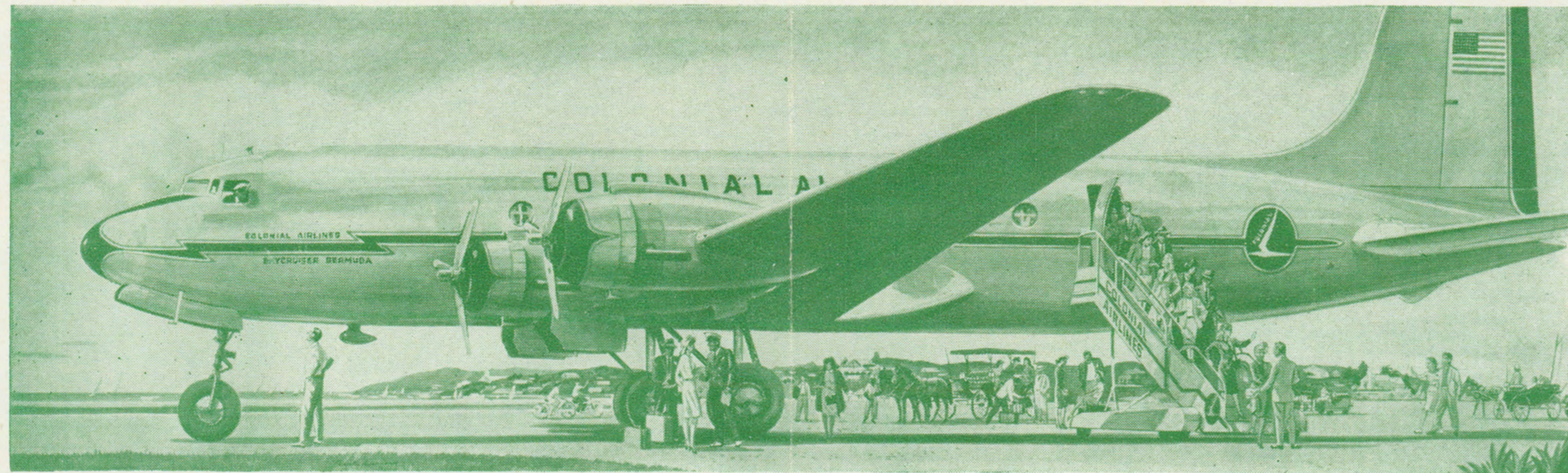


**CANADA
USA
BERMUDA**



Route of the Skycruisers

Enjoy every minute of your holiday vacation



South to Bermuda

Step into a wonder world of relaxation—sailing, bathing on coral beaches, bicycle picnics—it's just four magic hours by luxurious Skycruiser from New York or Washington. Ask a travel agent for details—there's no obligation or expense.



North to Canada

For outdoor sports, or just plain resting, the Province of Quebec is famous the world over. You can be in those cool high hills in a few hours—it's just over two, by Colonial, from New York to Montreal. Those days you used to allow for travel you can now turn into playtime and relaxation. They're bonus vacation days for you.



COLONIAL AIRLINES, INC.

630 FIFTH AVE., NEW YORK 20, N. Y.

GENERAL INFORMATION

BAGGAGE AND PERSONAL PROPERTY — Passengers are permitted a free baggage allowance of 40 pounds when traveling within the United States and Canada. 66 pounds of baggage will be carried free when traveling between any point on Colonial Airlines and Bermuda. The liability of the company for loss of, or damage to, baggage and other personal property is limited to \$100, unless a higher valuation is declared in advance and an additional charge is paid. The company is not responsible for any personal property which is not delivered into its custody.

CUSTOMS AND IMMIGRATION — International passengers are subject to customs and immigration examinations.

EQUIPMENT — 21-passenger DC-3 aircraft operated in United States Canada service. 44-passenger DC-4 aircraft operated in United States Bermuda service.

FARES — All fares are applicable only for transportation between airports, and are subject to change without notice. Ground transportation between airport and city is available at passenger's expense.

RESERVATIONS — All seats are reserved. Advance reservations are welcomed and will be held until time agreed upon for purchase of tickets.

All reservations on other than originating flight from city where ticket is purchased are subject to cancellation, unless passenger contacts reservation office at city of departure at least 6 hours prior to scheduled flight departure time or within 30 minutes after arrival by air at such city.

The company may cancel any reservation when such action is necessary for safety or other cause, and the passenger's sole recourse shall be recovery of the refund value of the ticket.

SCHEDULES — All flights schedules are subject to change or cancellation without notice.

SERVICE CHARGE — Any passenger failing to occupy reserved space whose reservation is not cancelled prior to scheduled flight departure time, will be assessed a service charge of 25 per cent of the one way fare when ticket is presented for refund or passage.

CITY	RESERVATIONS	TICKET OFFICE
Albany, N. Y.	8-3578	Airport Terminal
Baltimore, Md.	Riverside 2575	Airport Terminal
Bermuda	2004	Front Street, Hamilton
Burlington, Vt.	4600	Airport Terminal
Cornwall, Ont.	Zenith 4-7000	Massena Airport Terminal
Glens Falls, N. Y.	2-5855	Airport Terminal
Lake Placid, N. Y.	Saranac Lake..1135	Airport Terminal
Massena, N. Y.	1008	Airport Terminal
Montreal, Que.	MArquette 2201	1409 Peel Street
New York, N. Y.	MUrray Hill 6-5515	51 Vanderbilt Ave., Manhattan.....
Newark, N. J.	Ask for ...WX-6560	Hotel St. George, Brooklyn
Ottawa, Ont.	5-7281	Chateau Laurier
Plattsburg, N. Y.	1983	Airport Terminal
Reading, Pa.	4-8336	Airport Terminal
Rutland, Vt.	2762	Airport Terminal
Saranac Lake, N. Y.	1135	Airport Terminal
Schenectady, N. Y.	2-3100	Albany Airport Terminal
Scranton, Pa.	2-3289	Airport Terminal
Syracuse, N. Y.	2-2253	Onondaga Hotel
Troy, N. Y.	Enterprise 9661	Albany Airport Terminal
Washington, D. C.	EXecutive 2011	National Airport Terminal
Watertown, N. Y.	Dexter 51	Airport Terminal
Wilkes-Barre, Pa.	Enterprise .. 1-0601	Airport Terminal

FOR TICKETS OR FURTHER INFORMATION
APPLY TO
THOS. COOK & SON LIMITED
DOMINION SQUARE BUILDING
1241 PEEL ST.
MONTREAL

RESERVATIONS MAY BE MADE THROUGH YOUR LOCAL TRAVEL AGENT AT NO EXTRA COST.

EFFECTIVE APRIL 25, 1948

COLONIAL AIRLINES



**CANADA
USA
BERMUDA**



Route of the Skycruisers

