

AIR OREGON

Effective
October 28,
1979

CONNECTING TO ANOTHER AIRLINE?

Save \$\$ with Air Oregon's new JOINT FARES!

Now, not only can you get there from here — you can get there for less.

As an Air Oregon passenger, you may fly from any point on Air Oregon's system, and connect to a major carrier to any city in the continental U.S. for a discounted fare. Save time, parking and highway frustration by flying Air Oregon to catch your major airline flight.

FOR EXAMPLE: Flying from SALEM to PORTLAND to CHICAGO via Air Oregon and another carrier will cost you ONLY \$9.00* more than the PORTLAND to CHICAGO fare when flying coach.

Fly Air Oregon from MEDFORD to RENO and catch EASTERN to ST. LOUIS: The fare will be \$23.00* less than the combination of the two fares.

Call your travel agent or Air Oregon reservations for information about Air Oregon's convenient connecting flights, new specific joint fares — and specially constructed joint fares as well.**

CONNECTING at PORTLAND to United or Western?

- Our agents may now ticket your connection with only :30 between flights — faster than ever before!

AIR OREGON — AIMING to PLEASE!

DON'T BE A NO-SHOW.

An unexpected delay? A change of plans? Whatever the reason you're unable to use your Air Oregon reservation, please let us know.

The no-show factor is at a very high and costly level on our peak period flights! Please help us reduce it, so we can accommodate your travel needs and those of others.

Effective
October 28,
1979

*Fares Subject To Change Without Notice.

**Published in the Joint Fares Tariff 52 and Passenger Rules Tariff PR 7, Rule 165. Air Oregon is published under Executive Flight Services, dba, Air Oregon.

Make the Sunriver ski connection



*Air
Oregon
now offers daily
scheduled
service*



Skip the slippery roads and fly right into Sunriver from Medford, Eugene, Salem or Portland. Save your time for fluffy Mt. Bachelor, elegant dining, live entertainment and all the other things that make Sunriver so exciting.

Special package rates

include air fare,
lodging and lift tickets.
Phone Sunriver
for details.

Make your
Sunriver lodging
reservations now
Phone 593-1246
or 593-1221

Special arrangements
for meetings &
conventions



SUNRIVER

Sunriver, Oregon 97701

MEET THE NEW AIR OREGON

- * Now reaching a greater number of Oregon communities, plus nearby major destinations like Boise and Seattle's Boeing Field.
- * Flying an expanded fleet including ultra-modern, 17-passenger Swearingen Metroliners equipped with weather radar, pressurization, and 300-mph turbo prop jet engines.
- * Featuring frequent, convenient departures to accommodate fast-paced business travel.



We've taken Oregon under our wings.

AIR OREGON

RESERVATIONS & INFORMATION:

Portland: 249-4480

Within Oregon, toll free: 1-800-452-6285

Washington, Idaho, Nevada, Utah,

Northern California, toll free: 1-800-547-9308

AIR FREIGHT INFORMATION:

Portland: 249-4130

In Oregon, toll free: 1-800-452-9389

Boise: 1-208-336-3820 or 336-3821

Seattle: 1-206-767-7843

For additional copies of this schedule,
please write:

AIR OREGON, INC.

Portland International Airport

Portland, OR 97218

SCHEDULE KEY

Numbering System:

**Swearingen
Metroliner II**
400 Series
600 Series
800 Series
900 Series

**Piper Navajo
Chieftain**
100 Series
200 Series
300 Series
980/981

Courier Flights
612, 808, 980, 981
(Courier flights
are subject to
delays)

City Code

Destinations

Boise — BOI
Corvallis — CVO
Eugene — EUG
Hermiston — HES
Klamath Falls — LMT
La Grande — LGD
Medford — MFR
North Bend/
Coos Bay — OTH
Ontario — ONO
Pendleton — PDT
Portland — PDX
Redmond/Bend — RDM
Reno — RNO
Roseburg — RBG
Salem — SLE
Seattle — BFI
(Boeing Field)
Sunriver — SUO

X = Except; Mo = Monday; Tu = Tuesday; We = Wednesday;
Th = Thursday; Fr = Friday; Sa = Saturday; Su = Sunday.

Footnotes:

Bold type indicates p.m. times

*Mountain Time

**Confirmed reservations required for Sunriver stop

† Sunriver Service on Flights 305/306 only will be via the Redmond Airport until further notice.

For explanation of abbreviations and reference marks,
see page 2.

PASSENGER INFORMATION

RESERVATIONS: Reservations can be made through travel agencies, airlines, Air Oregon ticket counters or by calling Air Oregon direct.

Tariffs filed by Air Oregon with the Civil Aeronautics Board state that **reservations are subject to cancellation if:**

- 1) **Tickets are not purchased 30 minutes prior to scheduled departure.**
- 2) **Passenger fails to check in at boarding gate 10 minutes prior to scheduled departure.**

BAGGAGE:

- 1) **Allowance:** Each passenger is allowed to check a maximum of three pieces of baggage, subject to the following:
The outside dimensions (length plus width plus height) of the first piece are not to exceed 62", the dimensions of the second piece are not to exceed 55", and the dimensions of the third piece are not to exceed 45". Baggage in excess of this allowance will be charged for at the rate of \$6.00 per piece. Because of limited space availability, excess baggage will be on a standby basis only.

Due to weight limitations, there may be times when all baggage may not be accommodated on the same flight as the passenger.

Liability for baggage shall not exceed \$750 per passenger. If a higher valuation is declared it will result in an extra charge. Air Oregon will not accept for transportation any article as baggage of which the sum of length plus width plus height exceeds 80" or weighs more than 70 lbs. Such items may be accepted as air freight.

Carry-on baggage cannot exceed 9"x14"x15".

- 2) **Acceptance:** Fragile, perishable, poorly packaged baggage, or other items not suitable for transportation, may not be accepted. Air Oregon assumes no responsibility or liability for loss or damage of fragile, perishable, or poorly packaged items. Important documents and **medication should never be checked as baggage.** Air Oregon recommends that you place your **current** name, address and phone number on the **inside** and **outside** of all items being taken on your trip.
- 3) **Restricted Articles: Corrosive liquids, flammable substances such as matches and lighter fluid, compressed gas or other hazardous materials are prohibited and may not be carried in baggage.**

RESPONSIBILITY FOR DEPARTURES, ARRIVALS, CONNECTIONS: Air Oregon reserves the right to cancel or change schedules without notice. Schedules shown are based on expected flying times. Because weather and other factors may affect operations, departure and arrival times cannot be guaranteed. Air Oregon will not be responsible for failure to make connections with our own or other carriers' flights, nor for any errors or omissions in this schedule.

ALCOHOLIC BEVERAGES: Federal Aviation Agency regulations provide that no person may drink alcoholic beverages board an aircraft unless they have been served by the airline. We reserve the right to refuse boarding of any passenger who appears to be intoxicated.

ELECTRONIC DEVICES: Federal Aviation regulations prohibit in — flight operation of electronic devices other than portable voice recorders, electric calculators, electric watches, hearing aids, heart pacemakers and electric shavers. Other electronic devices (AM & FM Broadcast receivers) may interfere with navigation or communication systems of the aircraft.

RESTRICTED ARTICLES: Corrosive liquids, flammable substances, such as matches and lighter fluid, compressed gas or any hazardous material may not be carried in baggage.

DISCLOSURE NOTICE, DELIBERATE OVERBOOKING: Airline flights may be overbooked, and there is a slight chance that a seat will not be available on a flight for which a person has a confirmed reservation. A person denied boarding on a flight may be entitled to a compensatory payment. The rules for denied boarding compensation may be obtained by contacting Air Oregon passenger service.

NO SMOKING: Due to the short duration of most flights and close confines within the cabin, smoking is not allowed aboard Air Oregon aircraft.

A REMINDER: NO RESTROOM FACILITIES ARE AVAILABLE ABOARD AIR OREGON AIRCRAFT.

	LV	AR	FLT.#	STOPS CXNS	FREQ
From BAKER:					
To Boise*	10:25A	*12:00P	902	0	X Su
	12:45P	*2:50P	980	1	X Sa, Su
To Corvallis	6:10P	10:00P	981/123	PDX	X Fr, Sa, Su
To Eugene	6:00A	10:25A	901/803	PDX	X Su
	6:10P	10:25P	981/123	PDX	X Fr, Sa, Su
To Hermiston	6:10P	7:35P	981	2	X Fr, Sa, Su
	7:10P	8:35P	981	2	Fr Only
To Klamath Falls	6:00A	10:55A	901/401	PDX	X Su
To La Grande	6:00A	6:20A	901	0	X Su
	6:10P	6:30P	981	0	X Fr, Sa, Su
	7:10P	7:30P	981	0	Fr Only
To Medford	6:00A	9:55A	901/603	PDX	X Su
To North Bend/ Coos Bay	6:00A	11:10A	901/803	PDX	X Su
	6:10P	11:10P	981/123	PDX	X Fr, Sa, Su
To Ontario*	12:45P	*2:15P	980	0	X Sa, Su
To Pendleton	6:00A	6:55A	902	1	X Su
	6:10P	7:05P	981	1	X Fr, Sa, Su
	7:10P	8:05P	981	1	Fr Only

NOW! METRO SERVICE: BAKER — PORTLAND and BOISE

- Convenient 8:00 am Portland arrival
- To better serve our Eastern Oregon customers

To Portland	6:00A	8:00A	901	2	X Su
	6:10P	8:45P	981	3	X Fr, Sa, Su
	7:10P	9:45P	981	3	Fr Only
To Redmond/Bend	6:00A	9:55A	901/401	PDX	X Su
To Roseburg	6:00A	10:05A	901/219	PDX	X Sa, Su
To Salem	6:00A	8:40A	901/223	PDX	X Sa, Su
To Seattle	6:00A	12:20P	901/604	PDX	X Sa, Su
To Sunriver**	6:00A	1:15P	901/303	PDX	X Sa, Su

From BOISE:					
To Baker	*5:15P	5:55P	981	1	X Fr, Sa, Su
	*5:15P	6:55P	981	1	Fr Only
To Corvallis	*12:20P	5:45P	903/229	PDX	X Sa, Su
	*5:15P	10:00P	981/123	PDX	X Fr, Sa, Su
To Eugene	*12:20P	2:15P	903/805	PDX	X Su
	*5:15P	10:25P	981/123	PDX	X Fr, Sa, Su
To Hermiston	*5:15P	7:35P	981	4	X Fr, Sa, Su
	*5:15P	8:35P	981	4	Fr Only
To Klamath Falls	*12:20P	7:25P	903/405	PDX	X Sa, Su
To La Grande	*5:15P	6:30P	981	2	X Fr, Sa, Su
	*5:15P	7:30P	981	2	Fr Only
To Medford	*12:20P	3:35P	903/609	PDX	X Sa, Su
To North Bend/ Coos Bay	*12:20P	3:10P	903/805	PDX	X Su
	*12:20P	3:15P	903/127	PDX	X Sa, Su
	*5:15P	11:10P	981/123	PDX	X Fr, Sa, Su

Bold type indicates p.m. times

*Mountain time

**Confirmed reservations required for Sunriver stop

†Sunriver Service on Flights 305/306 only will be via the Redmond Airport until further notice.

	LV	AR	FLT.#	STOPS CXNS	FREQ
To Ontario	*5:15P	*5:45P	981	0	X Sa, Su
To Pendleton	*12:20P	12:10P	903	0	X Su
	*5:15P	7:05P	981	3	X Fr, Sa, Su
	*5:15P	8:05P	981	3	Fr Only

BOISE to PORTLAND

- Air Oregon has a convenient mid-day METRO departure

TRY US!

To Portland	*12:20P	1:30P	903	1	X Su
	*5:15P	8:45P	981	5	X Fr, Sa, Su
	*5:15P	9:45P	981	5	Fr Only
To Redmond/Bend	*12:20P	6:25P	903/405	PDX	X Sa, Su
	*12:20P	6:40P	903/305	PDX	X Sa, Su
To Roseburg	*12:20P	6:35P	903/229	PDX	X Sa, Su
To Salem	*12:20P	2:20P	903/127	PDX	X Sa, Su
To Seattle	*12:20P	4:45P	903/608	PDX	X Sa, Su
To Sunriver**	*12:20P	†6:10P	903/305	PDX	X Sa, Su

From CORVALLIS:

To Baker	6:40A	10:10A	120/902	PDX	X Su
To Boise	6:40A	*12:00P	120/902	PDX	X Su
To Eugene	10:10P	10:25P	123	0	X Sa
To Hermiston	6:40A	11:05A	120/980	PDX	X Sa, Su
To Klamath Falls	6:40A	10:55A	120/401	PDX	X Su
To La Grande	6:40A	12:05P	120/980	PDX	X Sa, Su
To Medford	6:40A	9:55A	120/603	PDX	X Su
To North Bend/ Coos Bay	6:40A	8:10A	120/801	PDX	X Su
	10:10P	11:10P	123	1	X Sa
To Ontario	6:40A	*2:15P	120/980	PDX	X Sa, Su
To Pendleton	6:40A	9:20A	120/902	PDX	X Su
To Portland	6:40A	7:10A	120	0	X Su
To Redmond/Bend	6:40A	8:30A	120/301	PDX	X Su
To Roseburg	6:40A	10:05A	120/219	PDX	X Sa, Su
	5:55P	6:35P	229	0	X Sa, Su

NOW! IMPROVED CONNECTIONS

- To AND from Corvallis
- Early access to Seattle — choice of returns

TRY THEM!

To Seattle	6:40A	8:15A	120/600	PDX	X Sa, Su
To Sunriver**	6:40A	8:55A	120/301	PDX	X Su

From EUGENE

To Baker	6:15A	10:10A	120/902	PDX	X Su
	7:05P	10:40P	226/906	PDX	X Sa, Su
To Boise	6:15A	*12:00P	120/902	PDX	X Su

For explanation of abbreviations and reference marks, see page 2.

From EUGENE	LV	AR	FLT.#	STOPS CXNS	FREQ
To Corvallis	6:15A	6:30A	120	0	X Su
To Hermiston	8:00A	11:05A	122/980	PDX	X Sa, Su
To Klamath Falls	6:15A	10:55A	120/401	PDX	X Su
	8:00A	10:55A	122/401	PDX	X Sa, Su
	4:30P	7:25P	806/405	PDX	X Sa
To Medford	9:30A	10:20A	223	0	X Sa, Su
	9:30P	10:20P	227	0	X Sa, Su
To North Bend/ Coos Bay	10:40A	11:10A	803	0	X Su
	2:40P	3:10P	805	0	Daily
	10:35P	11:10P	123	0	X Sa
To Ontario	8:00A	*2:15P	122/980	PDX	X Sa, Su
To Pendleton	6:15A	9:20A	120/902	PDX	X Su
	6:45A	9:20A	222/902	PDX	X Sa, Su
	10:55A	3:50P	302/904	PDX	X Sa, Su
	7:05P	9:35P	226/906	PDX	X Sa, Su
To Portland	6:15A	7:10A	120	1	X Su
	6:45A	7:45A	222	1	X Sa, Su
	8:00A	8:45A	122	0	X Sa, Su
	10:55A	11:40A	302	0	X Su
	4:30P	5:05P	806	0	Daily
	7:05P	8:05P	226	1	X Sa, Su
	7:35P	8:20P	230	0	X Sa, Su
To Redmond/Bend	6:15A	8:30A	120/301	PDX	X Su
	8:00A	9:55A	122/401	PDX	X Sa, Su
	10:55A	12:50P	302/303	PDX	X Sa, Su
	4:30P	6:25P	806/405	PDX	X Sa
	5:15P	6:40P	305	1	X Sa
To Reno	4:30P	10:15P	806/615	PDX	X Sa
To Salem	6:45A	7:10A	222	0	X Sa, Su
	7:05P	7:30P	226	0	X Sa, Su

EUGENE to SEATTLE on AIR OREGON

- Quick morning connection at Portland — choice of returns!
- We use BOEING FIELD — only :15 from downtown
- Avoid SEA-TAC Airport and Freeway congestion

TRY US!

To Seattle	6:15A	8:15A	120/600	PDX	X Sa, Su
To Sunriver**	6:15A	8:55A	120/301	PDX	X Su
	10:55A	1:15P	302/303	PDX	X Sa, Su
	5:15P	†6:10P	305	0	X Sa

NOW! CENTRAL OREGON SERVICE — DIRECT from EUGENE

- Convenient 5:15 pm departure!

Bold type indicates p.m. times

*Mountain time

**Confirmed reservations required for Sunriver stop

†Sunriver Service on Flights 305/306 only will be via the Redmond Airport until further notice.

	LV	AR	FLT.#	STOPS CXNS	FREQ
From HERMISTON					
To Baker	11:10A	12:35P	980	2	X Sa, Su
To Boise	11:10A	*2:50P	980	4	X Sa, Su
To Corvallis	7:45P	10:00P	981/123	PDX	X Fr, Sa, Su
To Eugene	7:45P	10:25P	981/123	PDX	X Fr, Sa, Su
To La Grande	11:10A	12:05P	980	1	X Sa, Su
To North Bend/ Coos Bay	7:45P	11:10P	981/123	PDX	X Fr, Sa, Su
To Ontario	11:10A	*2:15P	980	3	X Sa, Su
To Pendleton	11:10A	11:25A	980	0	X Sa, Su
To Portland	7:45P	8:45P	981	0	X Fr, Sa, Su
	8:45P	9:45P	981	0	Fr Only

DON'T BE A NO-SHOW.

An unexpected delay? A change of plans? Whatever the reason you're unable to use your Air Oregon reservation, please let us know.

The no-show factor is at a very high and costly level on our peak period flights! Please help us reduce it, so we can accommodate your travel needs and those of others.

From KLAMATH FALLS

To Baker	7:00A	12:35P	400/980	PDX	X Sa, Su
	3:30P	10:45P	404/906	PDX	X Sa
To Boise	7:00A	*2:50P	400/980	PDX	X Sa, Su
To Corvallis	11:15A	5:45P	402/229	PDX	X Sa, Su
	3:30P	10:00P	404/123	PDX	X Sa
To Eugene	7:00A	10:35A	400/302	RDM	X Su
	11:15A	2:15P	402/805	PDX	X Su
To Hermiston	7:00A	11:05A	400/980	PDX	X Sa, Su
To La Grande	7:00A	12:05A	400/980	PDX	X Sa, Su
	3:30P	10:10P	404/906	PDX	X Sa
To North Bend/ Coos Bay	7:00A	11:10A	400/302/ 803	RDM/ EUG	X Su
	11:15A	3:10P	402/805	PDX	X Su
	3:30P	6:45P	404/807	PDX	X Sa
To Ontario	7:00A	*2:15P	400/980	PDX	X Sa, Su
To Pendleton	7:00A	11:25A	400/980	PDX	X Sa, Su
	11:15A	3:50P	402/904	PDX	X Sa, Su
	3:30P	9:35P	404/906	PDX	X Sa

NOW! 3 DAILY METROLINERS to PORTLAND

- Improved connections to AND from Klamath Falls
- Working to serve you better

To Portland	7:00A	8:45A	400	1	X Su
	11:15A	1:00P	402	1	X Su
	3:30P	5:20P	404	1	X Sa
To Redmond/Bend	7:00A	7:40A	400	0	X Su
	11:15A	11:55A	402	0	X Su
	3:30P	4:10P	404	0	X Sa

For explanation of abbreviations and reference marks, see page 2.

From	LV	AR	FLT.#	STOPS CXNS	FREQ
KLAMATH FALLS					
To Roseburg	7:00A	10:05A	400/219	PDX	X Sa, Su
To Salem	11:15A	2:20P	402/127	PDX	X Sa, Su
To Seattle	7:00A	12:20P	400/604	PDX	X Sa, Su
To Sunriver**	7:00A	8:55A	400/301	RDM	X Su
	11:15A	1:15P	402/303	RDM	X Sa, Su

From LA GRANDE

To Baker	12:15P	12:35P	980	0	X Sa, Su
	10:25P	10:45P	906	0	X Sa
To Boise	12:15P	*2:50P	980	2	X Sa, Su
To Corvallis	6:40P	10:00P	981/123	PDX	X Fr, Sa, Su
To Eugene	6:35A	9:15A	901/223	PDX	X Sa, Su
	6:35A	10:25A	901/803	PDX	X Su
	6:40P	10:25P	981/123	PDX	X Fr, Sa, Su
To Hermiston	6:40P	7:35P	981	1	X Fr, Sa, Su
	7:40P	8:35P	981	1	Fr Only
To Klamath Falls	6:35A	10:55A	901/401	PDX	X Su
To Medford	6:35A	9:55A	901/603	PDX	X Su
To North Bend/ Coos Bay	6:35A	11:10A	901/803	PDX	X Su
	6:40P	11:10P	981/123	PDX	X Fr, Sa, Su
To Ontario	12:15P	*2:15P	980	1	X Sa, Su
To Pendleton	6:35A	6:55A	901	0	X Su
	6:40P	7:05P	981	0	X Fr, Sa, Su
	7:40P	8:05P	981	0	Fr Only

NEW! METRO SERVICE La GRANDE — PORTLAND

- Turbine powered, pressurized, comfortable
- TRY US!**

To Portland	6:35A	8:00P	901	1	X Su
	6:40P	8:45P	981	2	X Fr, Sa, Su
	7:40P	9:45P	981	2	Fr Only
To Redmond/Bend	6:35A	9:55A	901/401	PDX	X Su
To Roseburg	6:35A	10:05A	901/219	PDX	X Sa, Su
To Salem	6:35A	8:40A	901/223	PDX	X Sa, Su
To Seattle	6:35A	12:20P	901/604	PDX	X Sa, Su
To Sunriver**	6:35A	1:15P	901/303	PDX	X Sa, Su

From MEDFORD

To Baker	6:00A	10:10A	600/902	PDX	X Sa, Su
	7:25A	12:35P	602/980	PDX	X Sa, Su
	5:00P	10:45P	610/906	PDX	X Sa
	6:00P	10:45P	226/906	PDX	X Sa, Su
To Boise	6:00A	*12:00P	600/902	PDX	X Sa, Su
	7:25A	*2:50P	602/980	PDX	X Sa, Su
To Corvallis	1:45P	5:45P	608/229	PDX	X Sa, Su
	5:00P	10:00P	610/123	PDX	X Sa
	7:50P	10:00P	612/123	PDX	X Sa, Su

Bold type indicates p.m. times

*Mountain time

**Confirmed reservations required for Sunriver stop

†Sunriver Service on Flights 305/306 only will be via the Redmond Airport until further notice.

	LV	AR	FLT.#	STOPS CXNS	FREQ
To Eugene	5:45A	6:35A	222	0	X Sa, Su
	6:00P	6:50P	226	0	X Sa, Su
To Hermiston	7:25A	11:05A	602/980	PDX	X Sa, Su
To La Grande	7:25A	12:05P	602/980	PDX	X Sa, Su
	5:00P	10:10P	610/906	PDX	X Sa
	6:00P	10:10P	226/906	PDX	X Sa, Su
To North Bend/ Coos Bay	6:00A	8:10A	600/801	PDX	X Sa, Su
	6:00P	11:10P	226/123	EUG	X Sa, Su
To Ontario	7:25A	*2:15P	602/980	PDX	X Sa, Su
To Pendleton	6:00A	9:20A	600/902	PDX	X Sa, Su
	1:45P	3:50P	608/904	PDX	X Sa, Su
	5:00P	9:35P	610/906	PDX	X Sa
	6:00P	9:35P	226/906	PDX	X Sa, Su
To Portland	5:45A	7:45A	222	2	X Sa, Su
	6:00A	7:00A	600	0	X Sa, Su
	7:25A	8:25A	602	0	X Su
	10:15A	11:15A	604	0	X Su
	11:05A	12:05P	606	0	X Sa, Su
	1:45P	2:45P	608	0	X Su
	5:00P	6:00P	610	0	X Sa
	6:00P	8:05P	226	2	X Sa, Su
	7:50P	8:50P	612	0	X Fr, Sa, Su
	8:50P	9:50P	612	0	Fr Only
To Redmond/Bend	7:25A	9:55A	602/401	PDX	X Su
	10:15A	12:50P	604/303	PDX	X Sa, Su
	11:05A	2:10P	606/403	PDX	X Sa, Su
	1:45P	6:25P	608/405	PDX	X Sa, Su

NEW! RENO on AIR OREGON

- Leave Medford after dinner — our late evening return lets you “stay and play!”

To Reno	9:00P	10:15P	615	0	X Sa
To Salem	5:45A	7:10A	222	1	X Sa, Su
	6:00P	7:30P	226	1	X Sa, Su
To Seattle	6:00A	8:15A	600	1	X Sa, Su
	10:15A	12:20P	604	1	X Sa, Su
	1:45P	4:45A	608	1	X Sa, Su
To Sunriver**	6:00A	8:55A	600/301	PDX	X Sa, Su
	10:15A	1:15P	604/303	PDX	X Sa, Su
	1:45P	†6:10P	608/305	PDX	X Sa, Su

THE MEDFORD — PORTLAND EXPRESS

- 7 Nonstops each business day — each way!
- Only Air Oregon features pressurized, turbine-powered 17-passenger SWEARINGEN METRO II

For explanation of abbreviations and reference marks, see page 2.

	LV	AR	FLT.#	STOPS CXNS	FREQ
From NORTH BEND/ COOS BAY					
To Baker	5:30A	10:10A	120/902	PDX	X Su
	8:40A	12:35P	802/980	PDX	X Sa, Su
	7:05P	10:45P	808/906	PDX	X Fr, Sa
To Boise	5:30A	*12:00P	120/902	PDX	X Su
	8:40A	*2:50P	802/980	PDX	X Sa, Su
To Corvallis	5:30A	6:30A	120	1	X Su
	3:30P	5:45P	128/229	PDX	X Sa, Su
	8:05P	10:00P	808/123	PDX	Fr Only
To Eugene	5:30A	6:00A	120	0	X Su
	3:40P	4:10P	806	0	Daily
	8:05P	10:25P	808/123	PDX	Fr Only
To Hermiston	8:40A	11:05A	802/980	PDX	X Sa, Su
To Klamath Falls	5:30A	10:55A	120/401	PDX	X Su
	11:35A	3:10P	804/403	PDX	X Sa, Su
	3:40P	7:25P	806/305/ 405	EUG/ RDM	X Sa
To La Grande	8:40A	12:05P	802/980	PDX	X Sa, Su
	7:05P	10:10P	808/906	PDX	X Fr, Sa
To Medford	5:30A	9:55A	120/603	PDX	X Su
	5:30A	10:20A	120/222	EUG	X Sa, Su
	8:40A	10:45A	802/605	PDX	X Sa, Su
	7:05P	10:20P	808/227	PDX	X Fr, Sa, Su
To Ontario	8:40A	*2:15P	802/980	PDX	X Sa, Su
To Pendleton	5:30A	9:20A	120/902	PDX	X Su
	8:40A	11:25A	802/980	PDX	X Sa, Su
	11:35A	3:50P	804/904	PDX	X Sa, Su
	7:05P	9:35P	808/906	PDX	X Sa

NOW! 4 NONSTOPS: NORTH BEND — PORTLAND

- Timed for your connecting needs

AIR OREGON — AIMING to PLEASE!

To Portland	5:30A	7:10A	120	2	X Su
	8:40A	9:30A	802	0	X Su
	11:35A	12:25P	804	0	X Su
	3:30P	4:45P	128	0	X Sa, Su
	3:40P	5:05P	806	1	Daily
	7:05P	7:55P	808	0	X Fr, Sa
	8:05P	8:55P	808	0	Fr Only
To Redmond/Bend	5:30A	8:30A	120/301	PDX	X Su
	11:35A	2:10P	804/403	PDX	X Sa
	3:40P	6:40P	806/305	EUG	X Sa
	3:40P	6:25P	806/405	PDX	X Sa
To Salem	5:30A	7:10A	120/222	EUG	X Sa, Su
	11:35A	2:20P	804/127	PDX	X Sa, Su
	3:40P	7:30P	806/226	EUG	X Sa, Su
	7:05P	8:45P	808/227	PDX	X Fr, Sa, Su

Bold type indicates p.m. times

*Mountain time

**Confirmed reservations required for Sunriver stop

†Sunriver Service on Flights 305/306 only will be via the Redmond Airport until further notice.

	LV	AR	FLT.#	STOPS CXNS	FREQ
To Seattle	5:30A	8:15A	120/600	PDX	X Sa, Su
	8:40A	12:20P	802/604	PDX	X Sa, Su
To Sunriver**	5:30A	8:55A	120/301	PDX	X Su
	8:40A	1:15P	802/303	PDX	X Sa, Su
	3:40P	†6:10P	806/305	EUG	X Sa
From ONTARIO					
To Baker	*6:25P	5:55P	981	0	X Fr, Sa, Su
	*7:25P	6:55P	981	0	Fr Only
To Boise	*2:25P	*2:50P	980	0	X Sa, Su
To Corvallis	*6:25P	10:00P	981/123	PDX	X Fr, Sa, Su
To Eugene	*6:25P	10:25P	981/123	PDX	X Fr, Sa, Su
To Hermiston	*6:25P	7:35P	981	3	X Fr, Sa, Su
	*7:25P	8:35P	981	3	Fr Only
To La Grande	*6:25P	6:30P	981	1	X Fr, Sa, Su
	*7:25P	7:30P	981	1	Fr Only
To North Bend/ Coos Bay	*6:25P	11:10P	981/123	PDX	X Fr, Sa, Su
To Pendleton	*6:25P	7:05P	981	2	X Fr, Sa, Su
	*7:25P	8:05P	981	2	Fr Only
To Portland	*6:25P	8:45P	981	4	X Fr, Sa, Su
	*7:25P	9:45P	981	4	Fr Only

AIR OREGON — Action Oriented

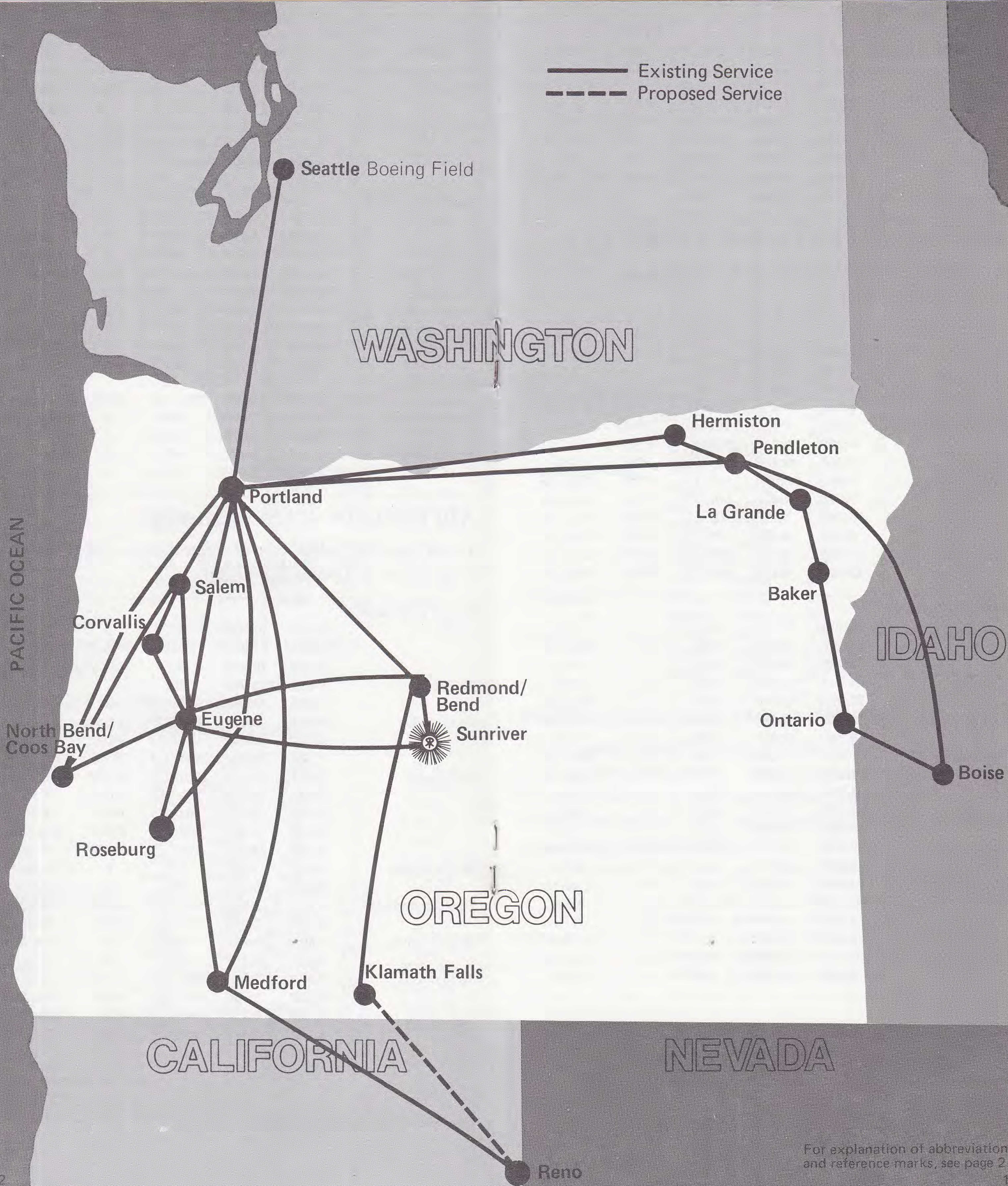
- Now featuring: added ease of connections — for your city
- No one serves Oregon like we do!

From PENDLETON

To Baker	9:40A	10:10A	902	0	X Su
	11:40A	12:35P	980	1	X Sa, Su
	9:50P	10:45P	906	1	X Sa
To Boise	9:40A	*12:00P	902	1	X Su
	11:40A	*2:50P	980	3	X Sa, Su
To Corvallis	12:30P	5:45P	903/229	PDX	X Sa, Su
	4:10P	10:00P	905/123	PDX	X Sa
	7:20P	10:00P	981/123	PDX	X Fr, Sa, Su
To Eugene	7:10A	9:15A	901/223	PDX	X Sa, Su
	7:10A	10:25A	901/803	PDX	X Su
	12:30P	2:15P	903/805	PDX	X Su
	4:10P	9:20P	905/227	PDX	X Sa, Su
	4:10P	10:25P	905/123	PDX	X Sa
To Hermiston	7:20P	7:35P	981	0	X Fr, Sa, Su
	8:20P	8:35P	981	0	Fr Only
To Klamath Falls	7:10A	10:55A	901/401	PDX	X Su
	4:10P	7:25P	905/405	PDX	X Sa
To La Grande	11:40A	12:05P	980	0	X Sa, Su
	9:50P	10:10P	906	0	X Sa
To Medford	7:10A	9:55A	901/603	PDX	X Su
	12:30P	3:35P	903/609	PDX	X Sa, Su
	4:10P	7:25P	905/611	PDX	X Sa, Su
	4:10P	8:35P	905/615	PDX	X Sa

For explanation of abbreviations and reference marks, see page 2.

— Existing Service
- - - Proposed Service



For explanation of abbreviations and reference marks, see page 2.

From PENDLETON	LV	AR	FLT.#	STOPS CXNS	FREQ
To North Bend/ Coos Bay	7:10A	11:10A	901/803	PDX	X Su
	12:30P	3:10P	903/805	PDX	X Su
	12:30P	3:15P	903/127	PDX	X Sa, Su
	4:10P	6:45P	905/807	PDX	X Sa
	7:20P	11:10P	981/123	PDX	X Fr, Sa, Su
To Ontario	11:40A	*2:15P	980	2	X Sa, Su

NOW! IMPROVED TIMING to PORTLAND

- Improved CONNECTIONS for Pendleton too!
- To serve your needs

To Portland	7:10A	8:00A	901	0	X Su
	12:30P	1:30P	903	0	X Su
	4:10P	5:10P	905	0	X Sa
	7:20P	8:45P	981	1	X Fr, Sa, Su
	8:20P	9:45P	981	1	Fr Only
To Redmond/Bend	7:10A	9:55A	901/401	PDX	X Su
	4:10P	6:25P	905/405	PDX	X Sa
To Reno	4:10P	10:15P	905/615	PDX	X Sa
To Roseburg	7:10A	10:05A	901/219	PDX	X Sa, Su
To Salem	7:10A	8:40A	901/223	PDX	X Sa, Su
	12:30P	2:20P	903/127	PDX	X Sa, Su
	4:10P	8:45P	905/227	PDX	X Sa, Su
To Seattle	12:30P	4:45P	903/608	PDX	X Sa, Su
To Sunriver**	12:30P	6:10P	903/305	PDX	X Sa, Su

From PORTLAND

To Baker	8:30A	10:10A	902	1	X Su
	10:05A	12:35P	980	3	X Sa, Su
	8:40P	10:45P	906	2	X Sa
To Boise	8:30A	*12:00P	902	2	X Su
	10:05A	*2:50P	980	5	X Sa, Su
To Corvallis	5:15P	5:45P	229	0	X Sa, Su
	9:30P	10:00P	123	0	X Sa
To Eugene	7:00A	7:45A	121	0	X Sa, Su
	8:15A	9:15A	223	1	X Sa, Su
	9:55A	10:25A	803	0	X Su
	1:45P	2:15P	805	0	Daily
	4:15P	5:00P	305	0	X Sa
	8:20P	9:20P	227	1	X Sa, Su
	9:30P	10:25P	123	1	X Sa
To Hermiston	10:05A	11:05A	980	0	X Sa, Su
To Klamath Falls	9:10A	10:55A	401	1	X Su
	1:25P	3:10P	403	1	X Sa
	5:40P	7:25P	405	1	X Sa
To La Grande	10:05A	12:05P	980	2	X Sa, Su
	8:40P	10:10P	906	1	X Sa

	LV	AR	FLT.#	STOPS CXNS	FREQ	
To Medford	6:00A	7:00A	601	0	X Sa, Su	
	8:15A	10:20A	223	2	X Sa, Su	
	8:50A	9:55A	603	0	X Su	
	9:45A	10:45A	605	0	X Sa, Su	
	12:20P	1:25P	607	0	X Su	
	2:30P	3:35P	609	0	X Sa	
	6:25P	7:30P	611	0	X Sa, Su	
	7:30P	8:35P	615	0	X Sa	
	8:20P	10:20P	227	2	X Sa, Su	
	To North Bend/ Coos Bay	7:20A	8:10A	801	0	X Su
9:55A		11:10A	803	1	X Su	
1:45P		3:10P	805	1	Daily	
1:55P		3:15P	127	1	X Sa, Su	
5:55P		6:45P	807	0	X Sa	
9:30P		11:10P	123	2	X Sa	
To Ontario		10:05A	*2:15P	980	4	X Sa, Su
To Pendleton	8:30A	9:20A	902	0	X Su	
	10:05A	11:25A	980	1	X Sa, Su	
	2:55P	3:50P	904	0	X Sa	
To Redmond/Bend	8:40P	9:35P	906	0	X Sa	
	7:40A	8:30A	301	0	X Su	
	9:10A	9:55A	401	0	X Su	
To Redmond/Bend	12:00P	12:50P	303	0	X Sa	
	1:25P	2:10P	403	0	X Sa	
	4:15P	6:40P	305	2	X Sa	
	5:40P	6:25P	405	0	X Sa	
	7:30P	10:15P	615	1	X Sa	
	To Reno	7:30P	10:15P	615	1	X Sa
	To Roseburg	9:00A	10:05A	219	0	X Sa, Su
5:15P		6:35P	229	1	X Sa, Su	
8:15A		8:40A	223	0	X Sa, Su	
To Salem	1:55P	2:20P	127	0	X Sa, Su	
	8:20P	8:45P	227	0	X Sa, Su	

PORTLAND to SEATTLE on AIR OREGON

- 3 convenient NONSTOPS each business day — each way!
- We use BOEING FIELD — only :15 from downtown!
- Avoid SEA-TAC Airport and Freeway congestion
- Leave Portland at 7:30 — returning from BOEING at 5:10
- Handy mid-day service too!

To Seattle	7:30A	8:15A	600	0	X Sa, Su
	11:35A	12:20P	604	0	X Sa, Su
	4:00P	4:45P	608	0	X Sa, Su
To Sunriver**	7:40A	8:55A	301	1	X Su
	12:00P	1:15P	303	1	X Sa
	4:15P	†6:10P	305	1	X Sa

Bold type indicates p.m. times

*Mountain time

**Confirmed reservations required for Sunriver stop

†Sunriver Service on Flights 305/306 only will be via the Redmond Airport until further notice.

For explanation of abbreviations and reference marks, see page 2.

	LV	AR	FLT.#	STOPS CXNS	FREQ
From REDMOND/BEND					
To Baker	8:00A	12:35P	400/980	PDX	X Sa, Su
	7:00P	10:45P	306/906	PDX	X Sa
To Boise	8:00A	*2:50P	400/980	PDX	X Sa, Su
To Corvallis	2:10P	5:45P	304/229	PDX	X Sa, Su
	7:00P	10:00P	306/123	PDX	X Sa

REDMOND — EUGENE: NONSTOP on AIR OREGON

- Convenient morning departure/early evening return
- Good connections to the beautiful Oregon Coast

TRY US!

To Eugene	9:45A	10:35A	302	0	X Su
	12:15P	2:15P	402/805	PDX	X Su
	2:10P	5:00P	304/305	PDX	X Sa
	7:00P	9:15P	306/227	PDX	X Sa, Su
	7:00P	10:25P	306/123	PDX	X Sa
To Hermiston	8:00A	11:05A	400/980	PDX	X Sa, Su
To Klamath Falls	10:15A	10:55A	401	0	X Su
	2:30P	3:10P	403	0	X Sa
	6:45P	7:25P	405	0	X Sa
To La Grande	8:00A	12:05P	400/980	PDX	X Sa, Su
	7:00P	10:10P	306/906	PDX	X Sa
To Medford	8:00A	10:45A	400/605	PDX	X Sa, Su
	9:45A	1:25P	302/607	PDX	X Su
	12:15P	3:35P	402/609	PDX	X Sa, Su
	4:30P	7:25P	404/611	PDX	X Sa, Su
	4:30P	8:35P	404/615	PDX	X Sa
	7:00P	10:20P	306/227	PDX	X Sa, Su
To North Bend/ Coos Bay	9:45A	11:10A	302/803	EUG	X Su
	12:15P	3:10P	402/805	PDX	X Su
	12:15P	3:15P	402/127	PDX	X Sa, Su
	4:30P	6:45P	404/807	PDX	X Sa
	7:00P	11:10P	306/123	PDX	X Sa
To Pendleton	8:00A	11:25A	400/980	PDX	X Sa, Su
	12:15P	3:50P	402/904	PDX	X Sa, Su
	7:00P	9:35P	306/906	PDX	X Sa

REDMOND — PORTLAND:

- New convenient EARLY MORNING service
- Mid-day — Afternoon and Evening flights too
- Only on AIR OREGON

	LV	AR	FLT.#	STOPS CXNS	FREQ
To Portland	8:00A	8:45A	400	0	X Su
	9:45A	11:40A	302	1	X Su
	12:15P	1:00P	402	0	X Su
	2:10P	3:05P	304	0	X Sa
	4:30P	5:20P	404	0	X Sa
	7:00P	7:50P	306	0	X Sa
To Reno	4:30P	10:15P	404/616	PDX	X Sa
To Roseburg	8:00A	10:05A	400/219	PDX	X Sa, Su
	2:10P	6:35P	304/229	PDX	X Sa, Su
To Salem	12:15P	2:20P	402/127	PDX	X Sa, Su
	7:00P	8:40P	306/227	PDX	X Sa, Su
To Seattle	2:10P	4:45P	304/608	PDX	X Sa, Su
To Sunriver**	8:40A	8:55A	301	0	X Su
	1:00P	1:15P	303	0	X Sa

From RENO					
To Medford	10:45P	11:59P	616	0	X Sa

From ROSEBURG					
To Baker	6:50P	10:45P	230/906	PDX	X Sa, Su
To Corvallis	6:50P	10:00P	230/123	PDX	X Sa, Su
To Eugene	6:50P	7:20P	230	0	X Sa, Su
To La Grande	6:50P	10:10P	230/906	PDX	X Sa, Su
To Pendleton	10:20A	3:50P	220/904	PDX	X Sa, Su
	6:50P	9:35P	230/906	PDX	X Sa, Su

NEW! ROSEBURG — PORTLAND: NONSTOP on AIR OREGON

- Leave at 10:20/convenient early evening return
- To better serve your needs

To Portland	10:20A	11:20A	220	0	X Sa, Su
	6:50P	8:20P	230	1	X Sa, Su
To Redmond/Bend	10:20A	12:50P	220/303	PDX	X Sa, Su
To Seattle	10:20A	12:20P	220/604	PDX	X Sa, Su
To Sunriver**	10:20A	1:15P	220/303	PDX	X Sa, Su

From SALEM					
To Baker	7:20A	10:10A	222/902	PDX	X Sa, Su
	7:40P	10:45P	226/906	PDX	X Sa, Su
To Boise	7:20A	*12:00P	222/902	PDX	X Sa, Su
To Eugene	8:50A	9:15A	223	0	X Sa, Su
	8:55P	9:20P	227	0	X Sa, Su
To Hermiston	7:20A	11:05A	222/980	PDX	X Sa, Su
To Klamath Falls	7:20A	10:55A	222/401	PDX	X Sa, Su
To La Grande	7:20A	12:05P	222/980	PDX	X Sa, Su
	7:40P	10:10P	226/906	PDX	X Sa, Su
To Medford	8:50A	10:20A	223	1	X Sa, Su
	8:55P	10:20P	227	1	X Sa, Su
To North Bend/ Coos Bay	8:50A	11:10A	223/803	EUG	X Sa, Su
	2:30P	3:15P	127	0	X Sa, Su
	8:55P	11:10P	227/123	EUG	X Sa, Su

Bold type indicates p.m. times

*Mountain time

**Confirmed reservations required for Sunriver stop

†Sunriver Service on Flights 305/306 only will be via the Redmond Airport until further notice.

For explanation of abbreviations and reference marks, see page 2.

From SALEM	LV	AR	FLT.#	STOPS CXNS	FREQ
To Ontario	7:20A	*2:15P	222/980	PDX	X Sa, Su
To Pendleton	7:20A	9:20A	222/902	PDX	X Sa, Su
	7:40P	9:35P	226/906	PDX	X Sa, Su

NEW! IMPROVED CONNECTIONS

- to AND from Salem
- New MID-DAY service from Portland/to the OREGON COAST

TRY THEM!

To Portland	7:20A	7:45A	222	0	X Sa, Su
	7:40P	8:05P	226	0	X Sa, Su
To Redmond/Bend	7:20A	9:55A	222/401	PDX	X Sa, Su

From SEATTLE (Boeing Field)

To Baker	8:35A	12:35P	605/980	PDX	X Sa, Su
	5:10P	10:45P	611/906	PDX	X Sa, Su
To Boise	8:35A	*2:50P	605/980	PDX	X Sa, Su
To Corvallis	12:40P	5:45P	609/229	PDX	X Sa, Su
	5:10P	10:00P	611/123	PDX	X Sa, Su
To Eugene	8:35A	10:25A	605/803	PDX	X Sa, Su
	12:40P	2:15P	609/805	PDX	X Sa, Su
	5:10P	9:20P	611/227	PDX	X Sa, Su
To Hermiston	8:35A	11:05A	605/980	PDX	X Sa, Su
To Klamath Falls	8:35A	3:10P	605/403	PDX	X Sa, Su
	12:40P	7:25P	609/405	PDX	X Sa, Su
To La Grande	8:35A	12:05P	605/980	PDX	X Sa, Su
	5:10P	10:10P	611/906	PDX	X Sa, Su
To Medford	8:35A	10:45A	605	1	X Sa, Su
	12:40P	3:35P	609	1	X Sa, Su
	5:10P	7:25P	611	1	X Sa, Su
To North Bend/ Coos Bay	8:35A	11:10A	605/803	PDX	X Sa, Su
	12:40P	3:10P	609/805	PDX	X Sa, Su
	5:10P	11:10P	611/123	PDX	X Sa, Su
To Ontario	8:35A	*2:15P	605/980	PDX	X Sa, Su
To Pendleton	8:35A	11:25A	605/980	PDX	X Sa, Su
	12:40P	3:50P	609/904	PDX	X Sa, Su
	5:10P	9:35P	611/906	PDX	X Sa, Su

Bold type indicates p.m. times

*Mountain time

**Confirmed reservations required for Sunriver stop

†Sunriver Service on Flights 305/306 only will be via the Redmond Airport until further notice.

LV	AR	FLT.#	STOPS CXNS	FREQ
----	----	-------	---------------	------

SEATTLE to PORTLAND on AIR OREGON

- Scheduled for the business traveler
- 3 Convenient nonstops each business day
- Using close-in BOEING FIELD, offering "quick and easy" parking AT THE DOOR!
- Leave Boeing at 8:35 — return from Portland at 4:00 — Just right for business — home for cocktails — Convenient mid-day service too — Each flight serves Medford as well

TRY US!

To Portland	8:35A	9:20A	605	0	X Sa, Su
	12:40P	1:25P	609	0	X Sa, Su
	5:10P	5:55P	611	0	X Sa, Su
To Redmond/Bend	8:35A	12:50A	605/303	PDX	X Sa, Su
	12:40P	6:25P	609/405	PDX	X Sa, Su
To Reno	5:10P	10:15P	611/615	PDX	X Sa, Su
To Roseburg	12:40P	6:35P	609/229	PDX	X Sa, Su
To Salem	12:40P	2:20P	609/127	PDX	X Sa, Su
	5:10P	8:45P	611/227	PDX	X Sa, Su
To Sunriver**	8:35A	1:15P	605/303	PDX	X Sa, Su
	12:40P	†6:10P	609/305	PDX	X Sa, Su

From SUNRIVER**

To Baker	†6:20P	10:45P	306/906	PDX	X Sa
To Corvallis	1:30P	5:45P	304/229	PDX	X Sa, Su
	†6:20P	10:00P	306/123	PDX	X Sa
To Eugene	9:10A	10:35A	302	1	X Su
	1:30P	5:00P	304/305	PDX	X Sa
	†6:20P	9:20P	306/227	PDX	X Sa, Su
	†6:20P	10:25P	306/123	PDX	X Sa
To Klamath Falls	9:10A	10:55A	302/401	RDM	X Su
	1:30P	3:10P	304/403	RDM	X Sa
	†6:20P	7:25P	306/405	RDM	X Sa
To La Grande	†6:20P	10:10P	306/906	PDX	X Su
To Medford	9:10A	1:25P	302/607	PDX	X Su
	†6:20P	10:20P	306/227	PDX	X Sa, Su
To North Bend/ Coos Bay	9:10A	11:10A	302/803	EUG	X Su
	†6:20P	11:10P	306/123	PDX	X Sa
To Pendleton	1:30P	5:35P	304/526	PDX	X Sa, Su
	†6:20P	9:35P	306/906	PDX	X Sa
To Portland	9:10A	11:40A	302	2	X Su
	1:30P	3:05P	304	1	X Sa
	†6:20P	7:05P	306	1	X Sa
To Redmond/Bend	9:10A	9:25A	302	0	X Su
	1:30P	1:50P	304	0	X Sa
	†6:20P	6:40P	306	0	X Sa
To Roseburg	1:30P	6:35P	304/229	PDX	X Sa, Su
To Salem	†6:20P	8:45P	306/227	PDX	X Sa, Su
To Seattle	1:30P	4:45P	304/608	PDX	X Sa, Su

—NOTE: Flight 306 departure from Redmond: 7:00P

For explanation of abbreviations and reference marks, see page 2.

Come explore America's land of surprises. **Oregon.**

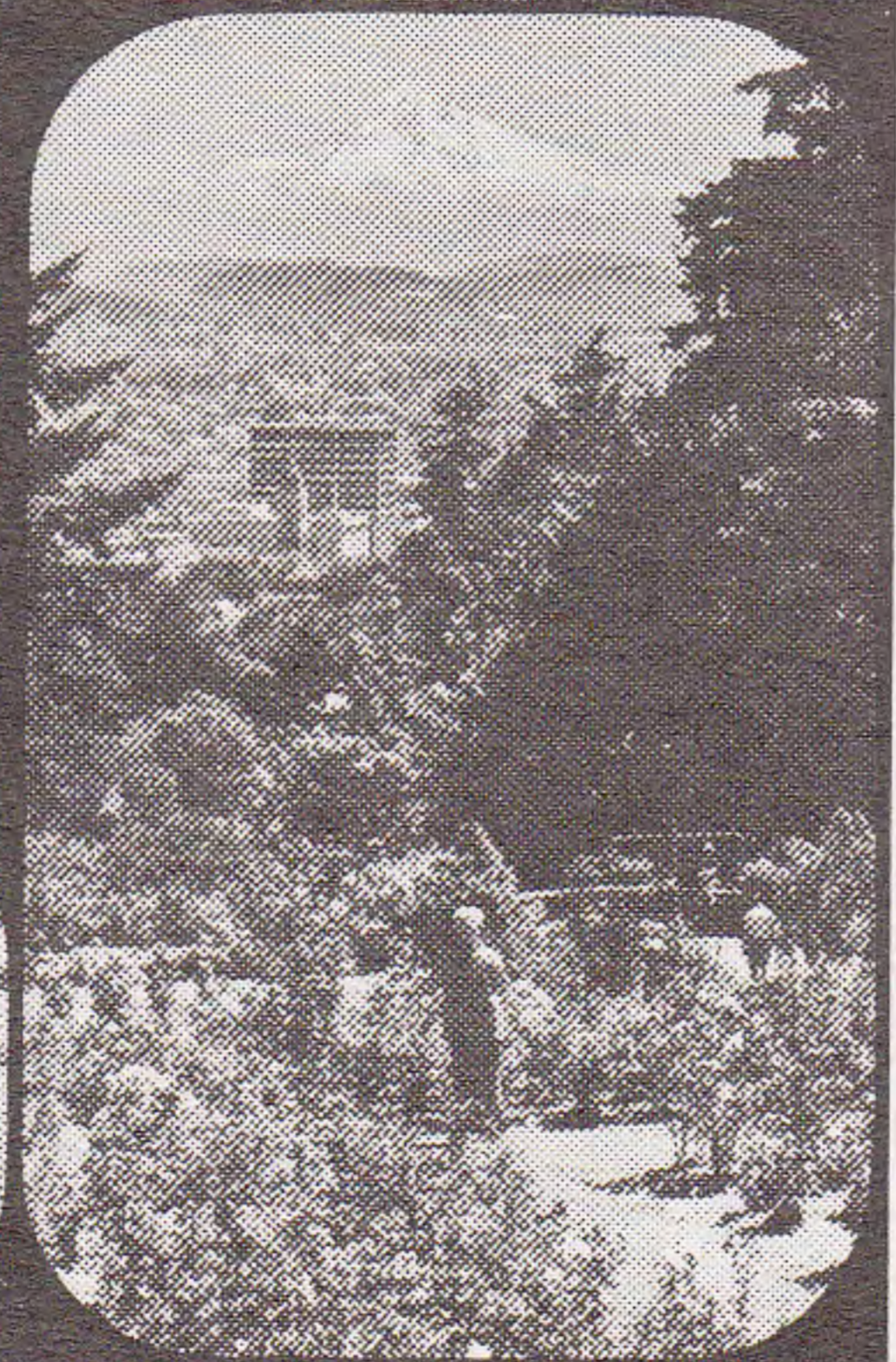
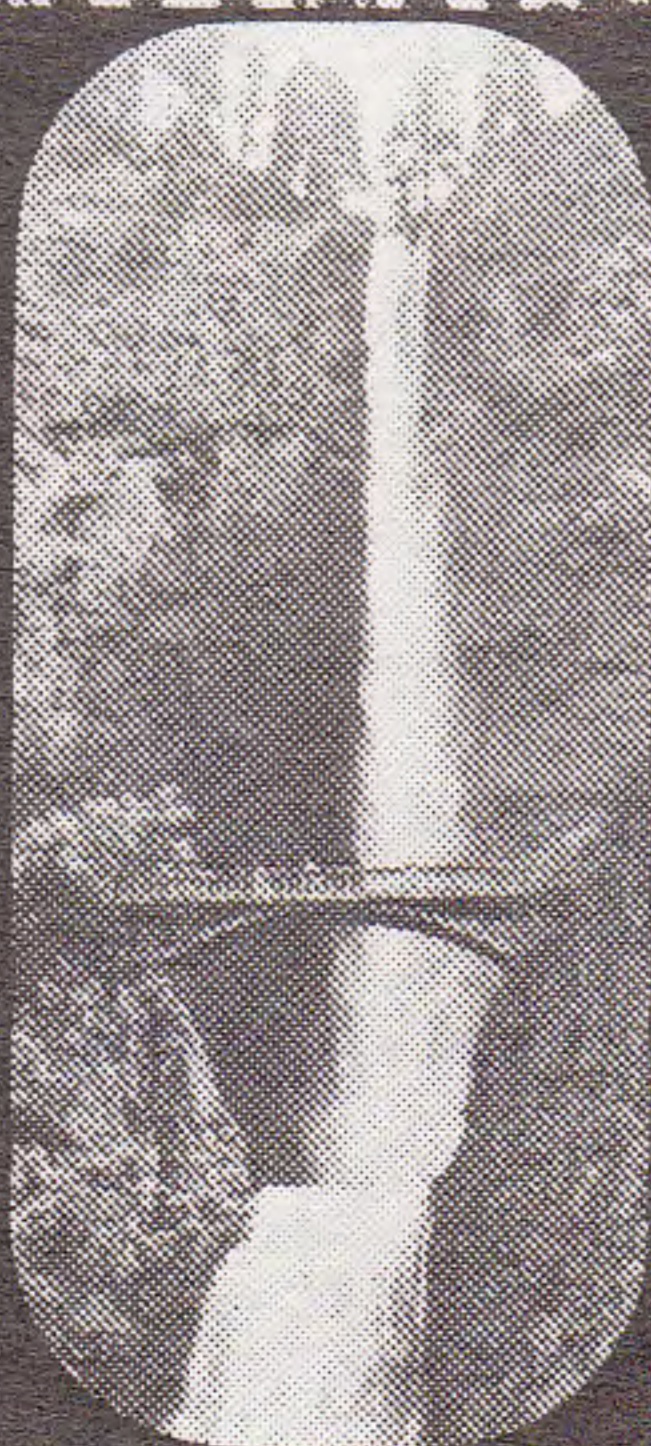
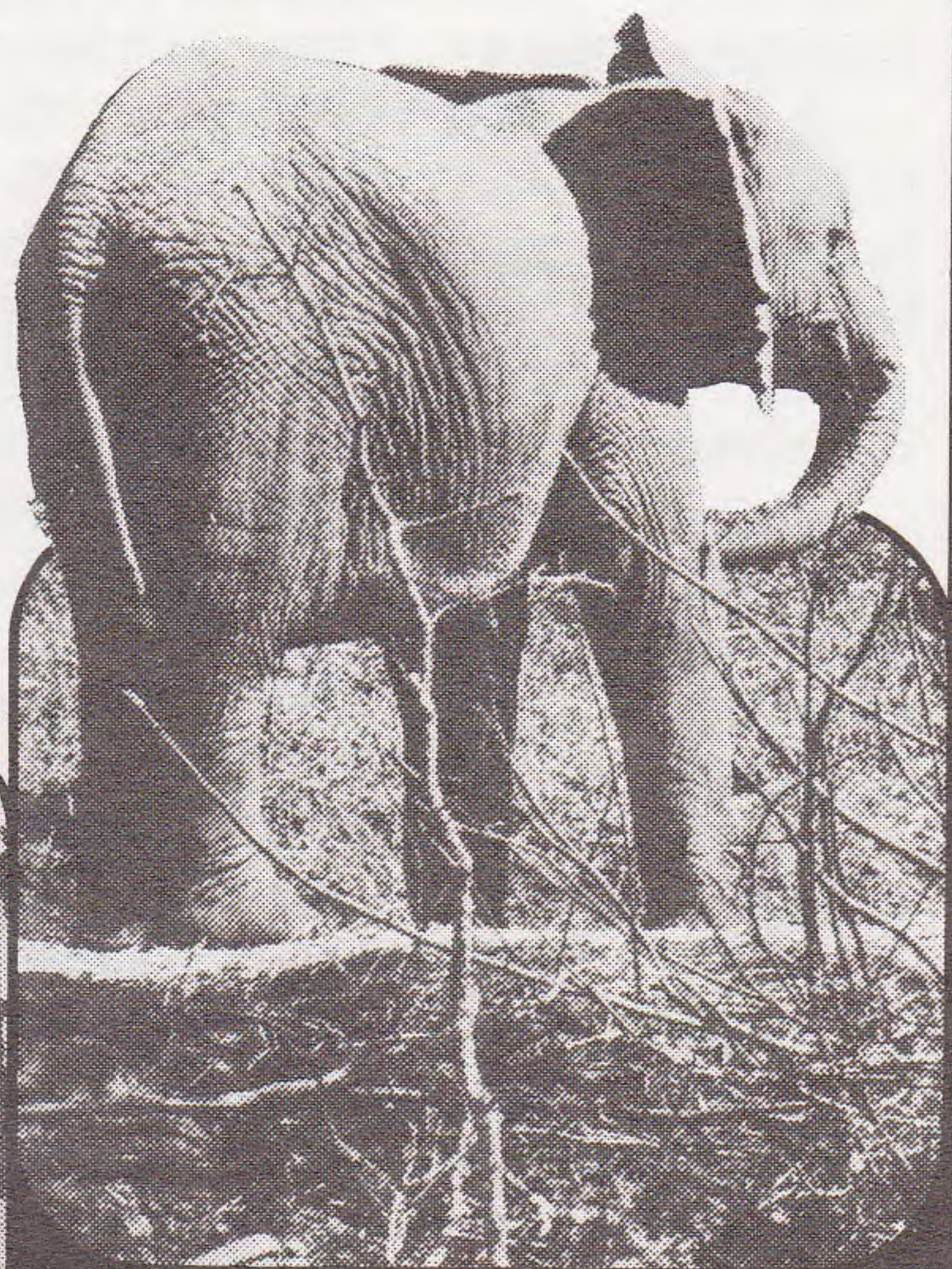
Your Air Oregon flight
will reveal a land of
magnificent mountains,
sparkling lakes, white
beaches and vast,
green forests.

Oregon is also a land of
spectacular surprises, full
of more things to see and do
and more ways to have fun
than just about anyplace
else in the USA.

Take time to discover
them all.

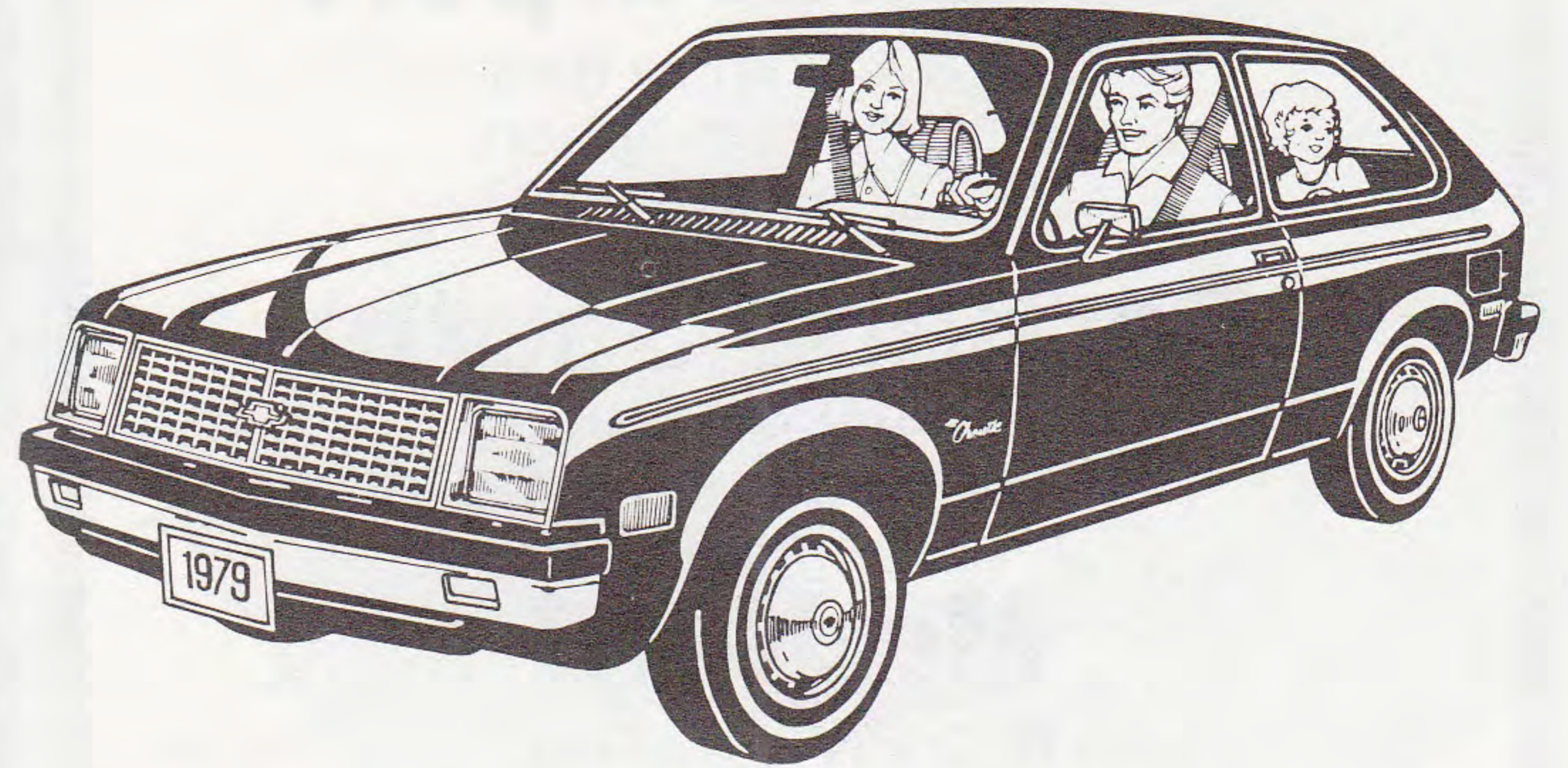
We can send you a
planning book helpful
to both residents and
visitors here in America's
finest amusement park—
Oregon.

Write:
**Travel Information
Section
Room A 79
Department of
Transportation
Salem, OR
97310**



You can't beat The Big Green Team

for top-condition cars and low daily, weekend and vacation rates.



We feature GM cars like this Chevrolet Chevette.

**Check our low daily, weekend
and vacation rates.**

CALL FOR RESERVATIONS:

*Burnside & Broadway
Portland (opens Sept. 1)* **228-6637**

*Portland Int'l
Airport* **249-4900**

*Mahlon-Sweet
Field (Eugene)* **688-8161**

*Medford-Jackson
County Airport* **779-4863**

**TOLL FREE RESERVATION NO.
800-328-4567**

**NATIONAL
CAR RENTAL**

National Car Rental



*We offer S & H Green Stamp certificates
on rentals in all 50 U.S. states.*

Holidome fun centers

Portland Airport

82nd & Columbia Blvd.
3 minutes from airport
(Free limo service)

Portland South

I-5, Stafford Exit
30 minutes from airport
(Free Limo service)

Medford

I-5, Crater Lake Hwy.
3 minutes from airport
(Free limo service)

Each Featuring

- Luxury Rooms
- Indoor Pool
- Suites with wet bars
- Saunas (Except Medford)
- Game Room
- LOUNGE with live entertainment (6 nights per week)
- Complete Convention Facilities (9-900)
- Rent-A-Car Service

These fine Holiday Inns offer every convenience and service to make your business travel a pleasure.

Come to our place. Come to



Commissions Paid Promptly

**Portland
Airport**

1-503-256-5000

**Portland
South**

1-503-682-2211

Medford

1-503-779-3141

Across

OREGON



in minutes

**NEW AIR OREGON
PACKAGE EXPRESS SERVICE**
Now your last-minute
package can reach most
Oregon cities in less than one hour!
Via Air Oregon Express.
You'll like our low rates.
We've taken Oregon under our wings.

**AIR EXPRESS
INFORMATION**
Portland: 249-4130 / In Oregon,
toll free: 1-800-452-9389
Boise: 1-800-336-3820 or
336-3821 / Seattle:
1-206-767-7843

AIR OREGON

Holiday Inn

1979

S M T W T F S
JULY

1 2 3 4 5 6 7
8 9 10 11 12 13 14
15 16 17 18 19 20 21
22 23 24 25 26 27 28
29 30 31

AUGUST

1 2 3 4
5 6 7 8 9 10 11
12 13 14 15 16 17 18
19 20 21 22 23 24 25
26 27 28 29 30 31

SEPTEMBER

1
2 3 4 5 6 7 8
9 10 11 12 13 14 15
16 17 18 19 20 21 22
23 24 25 26 27 28 29
30

S M T W T F S
OCTOBER

1 2 3 4 5 6
7 8 9 10 11 12 13
14 15 16 17 18 19 20
21 22 23 24 25 26 27
28 29 30 31

NOVEMBER

1 2 3
4 5 6 7 8 9 10
11 12 13 14 15 16 17
18 19 20 21 22 23 24
25 26 27 28 29 30

DECEMBER

1
2 3 4 5 6 7 8
9 10 11 12 13 14 15
16 17 18 19 20 21 22
23 24 25 26 27 28 29
30 31

1980

S M T W T F S
JANUARY

1 2 3 4 5
6 7 8 9 10 11 12
13 14 15 16 17 18 19
20 21 22 23 24 25 26
27 28 29 30 31

FEBRUARY

1 2
3 4 5 6 7 8 9
10 11 12 13 14 15 16
17 18 19 20 21 22 23
24 25 26 27 28 29

MARCH

1
2 3 4 5 6 7 8
9 10 11 12 13 14 15
16 17 18 19 20 21 22
23 24 25 26 27 28 29
30 31

S M T W T F S
APRIL

1 2 3 4 5
6 7 8 9 10 11 12
13 14 15 16 17 18 19
20 21 22 23 24 25 26
27 28 29 30

MAY

1 2 3
4 5 6 7 8 9 10
11 12 13 14 15 16 17
18 19 20 21 22 23 24
25 26 27 28 29 30 31

JUNE

1 2 3 4 5 6 7
8 9 10 11 12 13 14
15 16 17 18 19 20 21
22 23 24 25 26 27 28
29 30

At Budget you're #1

Great service,
great rates!

PORTLAND

International Airport

249-4550

Downtown

834 S.W. Broadway

222-9123

EUGENE

Municipal Airport

689-1421

Downtown

1711 Willamette

345-0521

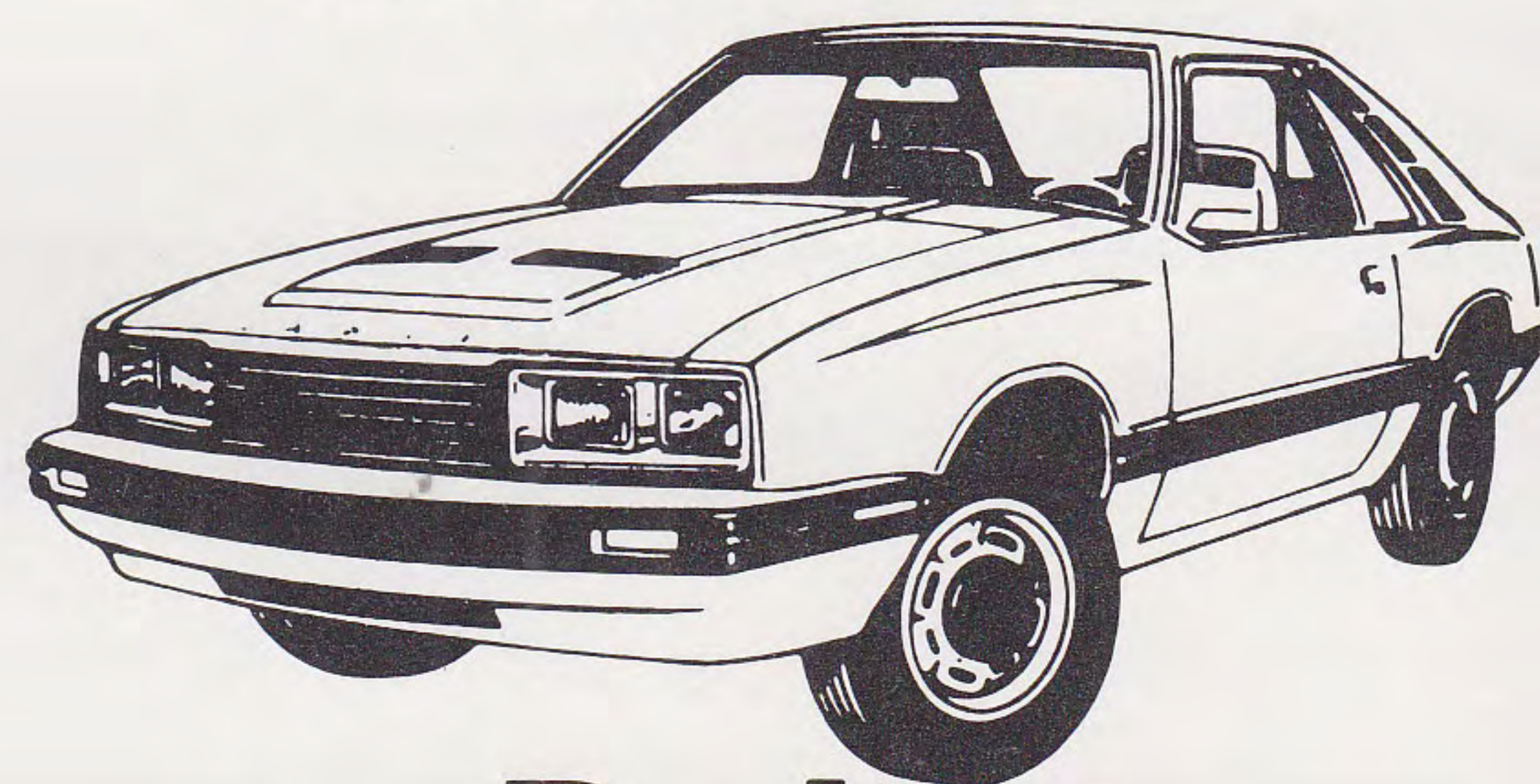
MEDFORD

3265 Biddle Road

773-7023

Toll Free Worldwide

1-800-228-9650



Budget

A Budget System Licensee

rent a car

Sears

SEARS ROEBUCK AND CO.

**Rent
a Car**

We feature Lincoln - Mercury
and other fine cars.
Budget rents trucks, too. Ask
about our low commercial rates.

© 1979 Budget Rent a Car Corporation, Chicago, IL