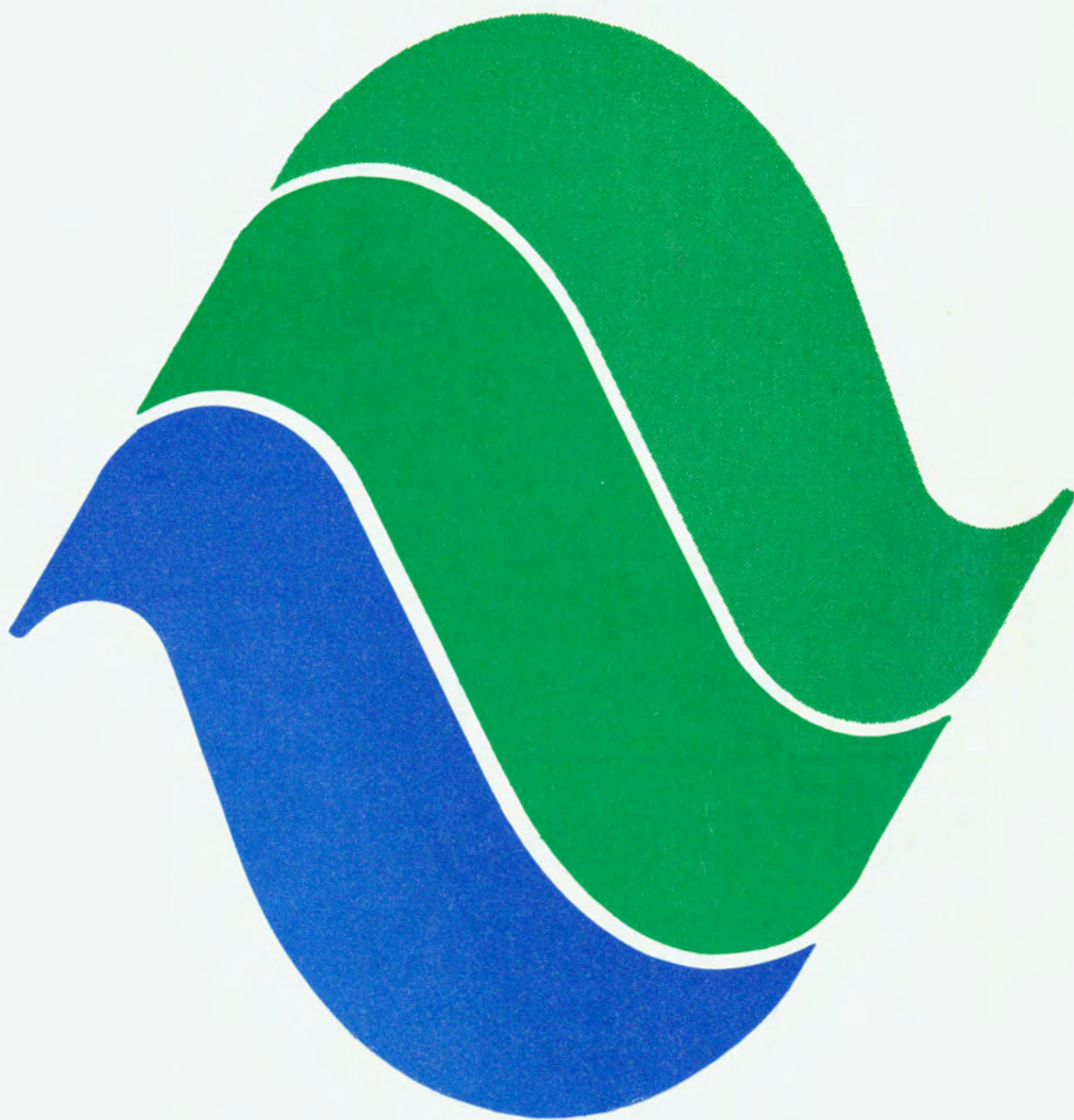


# ***Cascade Airways***

*System Timetable*

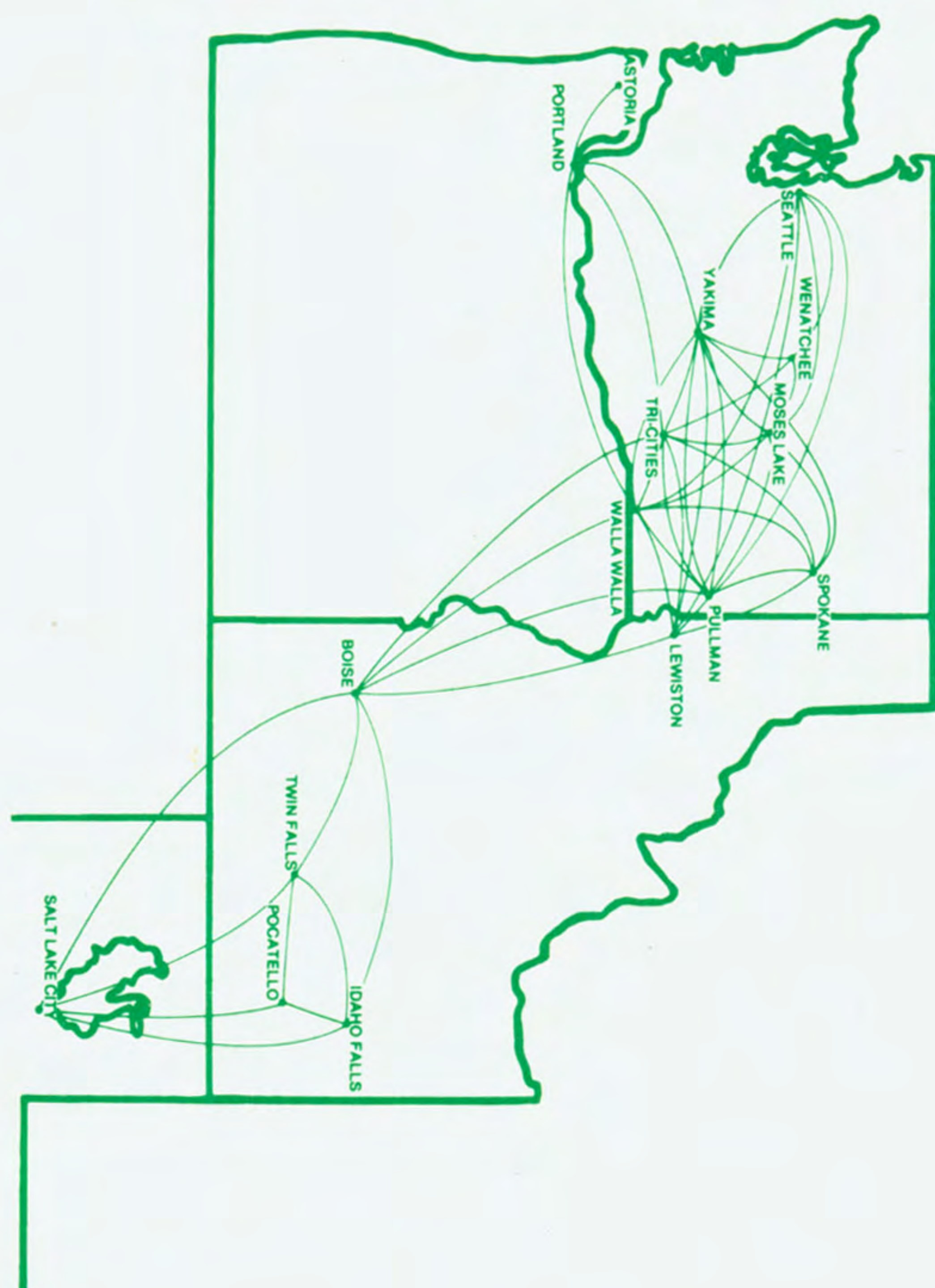


**Effective April 26, 1981**

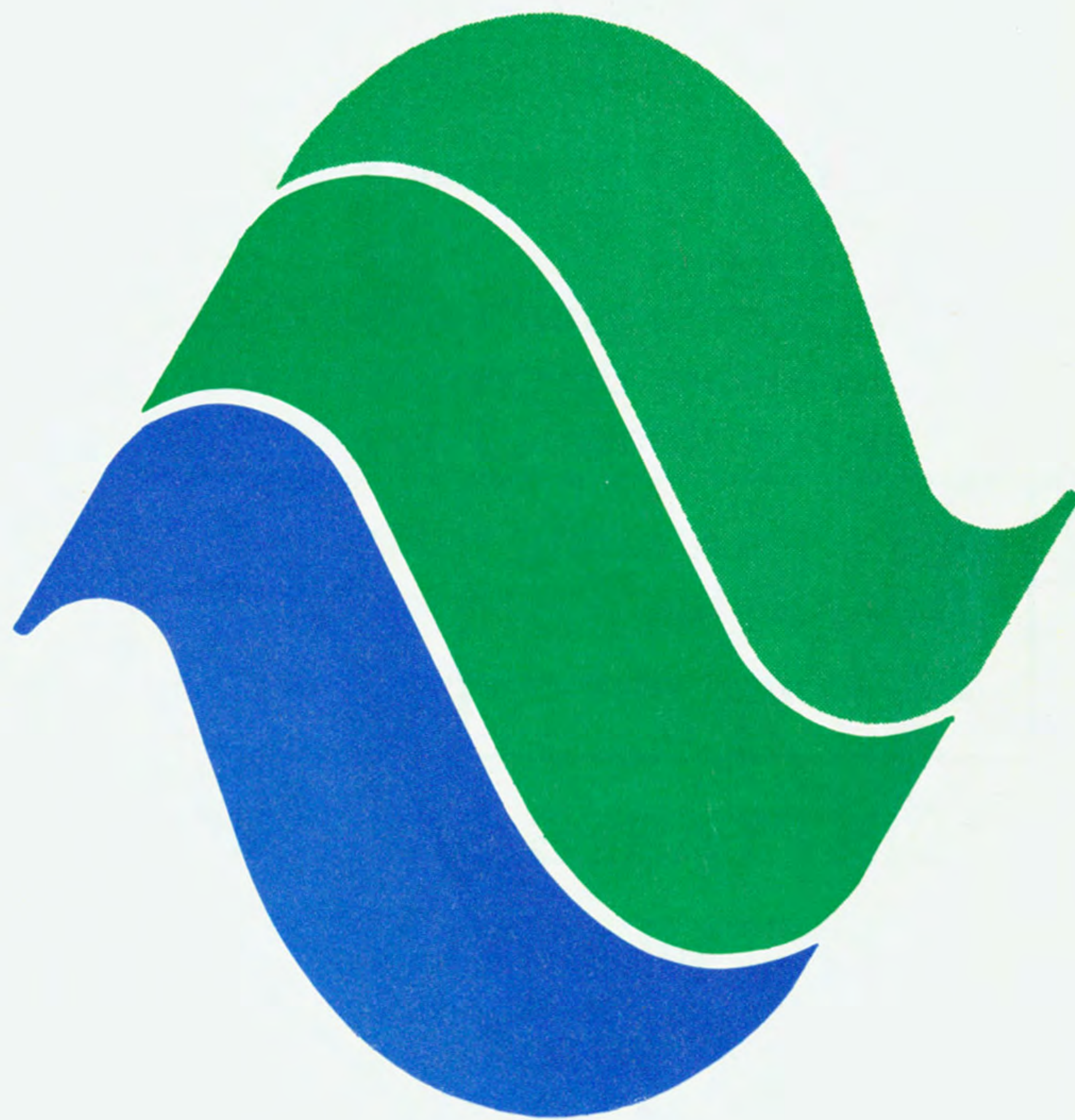
# Cascade Airways

See your local travel agent

## System Timetable



**Cascade Airways Inc.**  
Post Office Box 19207  
Spokane, International Airport  
Spokane, Washington 99219



Effective April 26, 1981

Bulk Rate  
U.S. Postage  
PAID  
Permit No. 490  
Spokane, WA

## Chapter ELEVEN

### PRIME RIB CAPITOL OF THE WEST

Rustic atmosphere and great food and drink — Seafood combinations with Steak and Prime Rib. Hot hors d'oeuvres in the lounge. Dinner includes the greatest salad bar in the west plus chowder and hot breads.

Bring this coupon when you come. It's worth **10% OFF** your dinner check

#### THE IDEAL GIFT

CHAPTER ELEVEN Gift Certificates and Gift Paks. Inquire at any Chapter Eleven Restaurant or call toll free in Washington. 1-800-572-4392

Spokane • Yakima • Tri Cities  
Kingdome • Factoria • Burien

When you get there receive a

**\$500** discount

on your rental of a Thunderbird, Granada, Fairmont or similar car when you present this folder to any of the below stations.

#### We feature Fords.

YAKIMA 248-6767	SEATTLE 244-5454
PASCO 547-8888	WALLA WALLA 525-8811
PULLMAN 332-3511	WENATCHEE 663-2626
MOSES LAKE 765-6630	RICHLAND 946-7666
PORTLAND 257-9433	LEWISTON 746-0488
SPOKANE 624-2255	OLYMPIA 943-6990
BOISE 343-8100	SALT LAKE 322-2488

Nationwide toll-free reservation and information

**800-527-0202**

**ai AMERICAN INTERNATIONAL RENT-A-CAR**







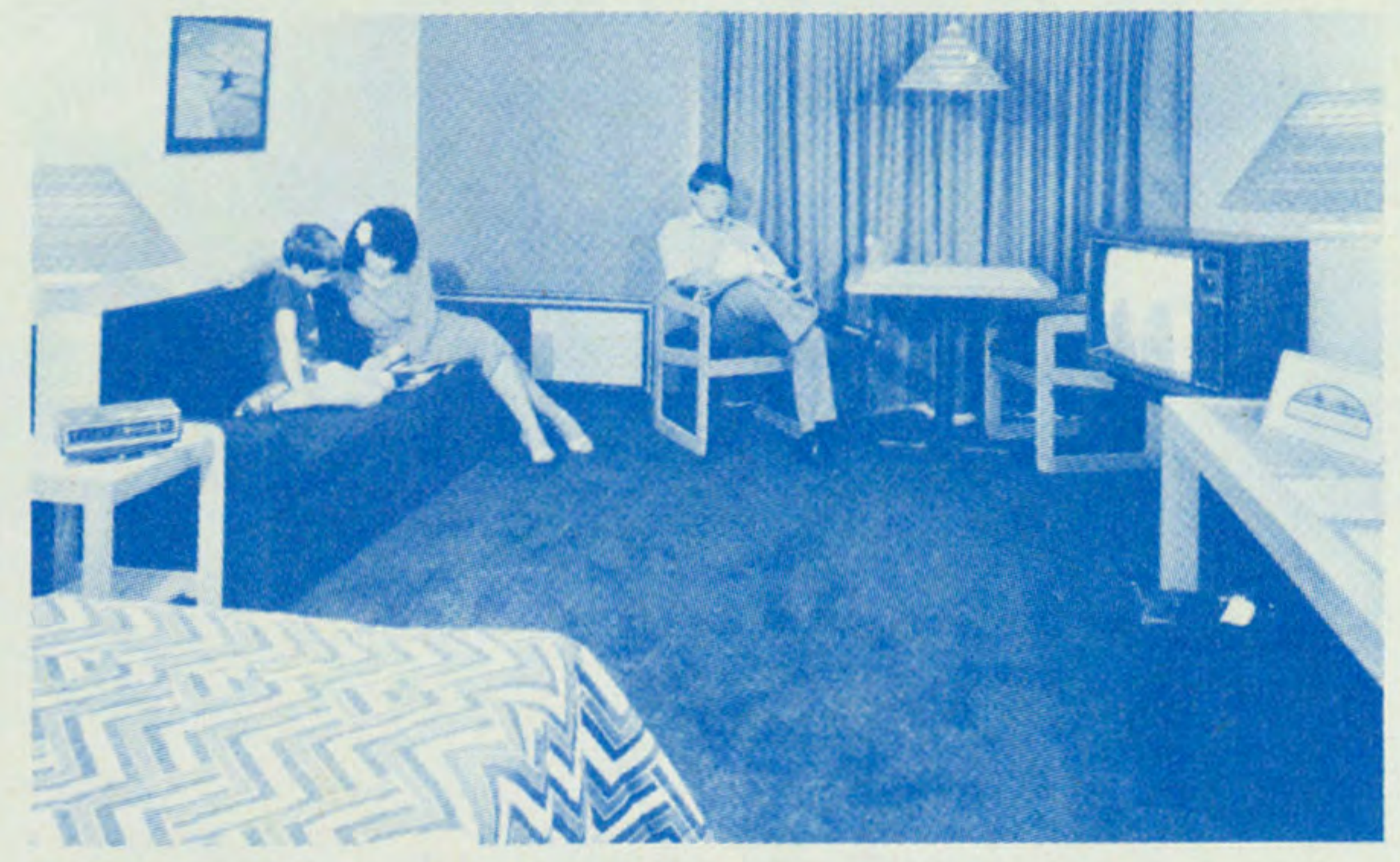
Now flying to 18 airports  
serving  
over 25 communities  
in Washington, Oregon,  
Idaho and Utah

# Discounts! with "Volcano Fares"

You've heard of "Super Saver" fares, you've heard of "Yes for Less," and "Peanut Fares." Now, Cascade Airways brings you "VOLCANO FARES." On some round-trip flights you can save up to 30% or take advantage of the Family Plan which offers you a discount when you and your family fly together. At a time when driving your car is more costly than ever, it makes sense to fly — Cascade Airways, the airline that flies more people more places more often than any other airline in the Northwest. For details about "VOLCANO FARES," consult your travel agent or call Cascade Airways



## Put yourself in our place.



Spokane • Moscow • Tri-Cities  
Toll Free:  
In Washington 1-800-572-6577  
In Idaho, Oregon, Montana  
& N. California 1-800-541-6800

★★★★ AAA rating • dining & dancing  
• free parking  
Ask about our corporate program

### JOINT FARES SAVE MONEY

With 1150 carefully scheduled flights weekly between Cascade cities, excellent connections are available to both domestic and international destinations. By virtue of "joint fares," you, as a Cascade passenger, may enjoy the savings provided by discounted fares when traveling continues via a major airline. The specific amount of the fare will always be less than the combination of each airline's local fare.

Not only do joint fares save you the costs of surface transportation and the inconvenience of hours of driving, traffic congestion, and parking problems, but assure you that your ticket will be written through to your destination. The next time you travel, remember the Cascade Connection and call Cascade Airways or your travel agent for the applicable "joint fare."

### CASCADE INFORMATION

Founded in 1970, Cascade Airways provides reliable transportation to the Great Northwest with the jet-powered Beech-99 and Embraer Bandeirante. For passenger convenience, Cascade utilizes the industry's most sophisticated computerized reservation system, developed by Braniff International. One call to reservations brings instant confirmation on airlines around the world — one ticket and your baggage is checked through to your ultimate destination.

#### CHILDREN

Any child under two years of age not occupying a seat will be carried free with each accompanying ticketed passenger. Children must be at least eight (8) years of age to travel unaccompanied. It is necessary that a child under 12 years of age carry with him the name, address, and telephone number of the party who is to pick up the child when he arrives at his destination.

#### RESERVATIONS

Reservations are recommended for all flights and may be made directly through Cascade, your travel agent, or any domestic or international airline.

#### CHECK-IN TIME

Due to security regulations, we request that all passengers check-in at least 30 minutes prior to flight time. If a passenger has not checked in with an authorized Cascade agent 20 minutes prior to flight departure, reservations may be cancelled and resold. Cascade Airways cannot be responsible for missed flights or connections if a passenger fails to present himself at the ticket lifting point at least 20 minutes prior to the scheduled departure time.

#### BAGGAGE

Baggage up to 50 lbs., normally 2 pieces plus briefcase or hand luggage will be carried free of charge. Excess baggage may be carried space permitting at the rate of \$6.00 per piece. Company liability is limited to \$500.00 per passenger unless a higher value is declared and applicable charges are paid before departure. There will be a \$6.00 charge for oversized luggage. Due to FAA regulations, all carry-on baggage must be placed beneath a seat or collected and placed in a cargo compartment.

#### CHARTERS

Our Beechcraft 99 fifteen passenger and Embraer 16 passenger propjets can be chartered to points in the United States and Canada. For charter information, call our Charter Sales Department at (509) 838-4168.

#### SCHEDULES

Cascade Airways will not be responsible for damages resulting from failure to depart or arrive at the times stated in this time table, nor for failure to make connections with planes of another airlines or this company, nor for cancellations beyond our control when such action is deemed advisable. Schedules and fares are subject to change without notice. All times stated herein are local times.

### Add My Name To The Timetable Mailing List

Cascade Airways maintains an extensive list of individuals and corporations receiving copies of our system timetables. If you wish to be included on this mailing list to receive your copy or copies, FREE of charge, just complete the following:

MAIL TO:

Company Name \_\_\_\_\_

Individual's Name \_\_\_\_\_

Street Address \_\_\_\_\_

City/State/Zip \_\_\_\_\_

Please specify

Passenger \_\_\_\_\_ Freight \_\_\_\_\_ Both \_\_\_\_\_ Quantity Desired \_\_\_\_\_  
CZ 81-2