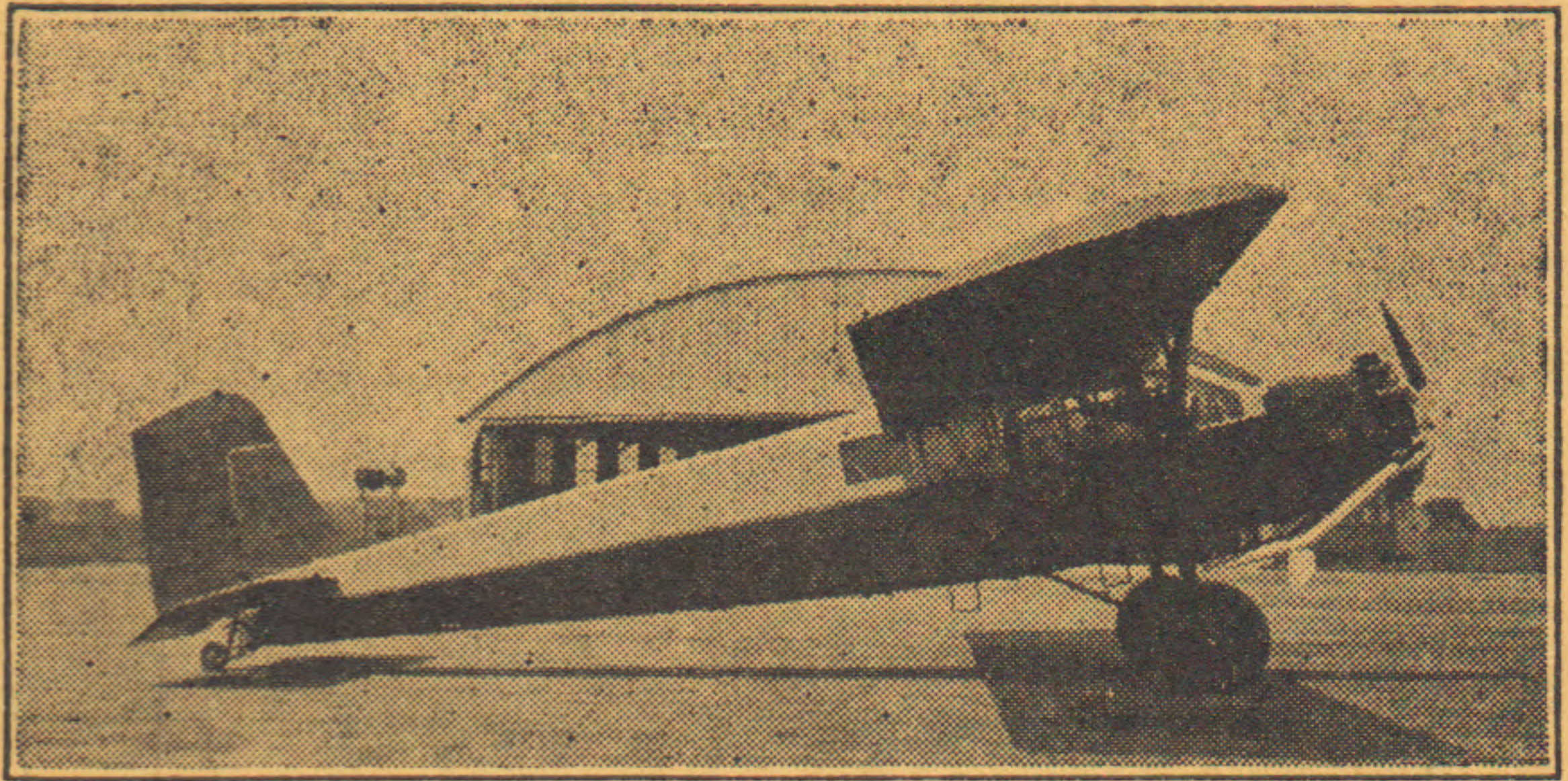


# CENTRAL OHIO AIRWAYS



FAST PASSENGER SERVICE  
*between*  
DAYTON - SPRINGFIELD  
COLUMBUS

Connecting at Columbus with T.W.A. and  
American Airways for all points in  
the United States.

OPERATED BY  
The Little-Greiner Flying Service, Inc.

## CENTRAL OHIO AIRWAYS

offers a convenient connecting link for air travelers to and from Dayton, Springfield and Columbus for all points in the United States in connection with T.W.A. and American Airways. Our planes are manned by veteran pilots with years of flying experience. Our entire course is over lighted and improved airways and airports.

### PASSENGER FARES

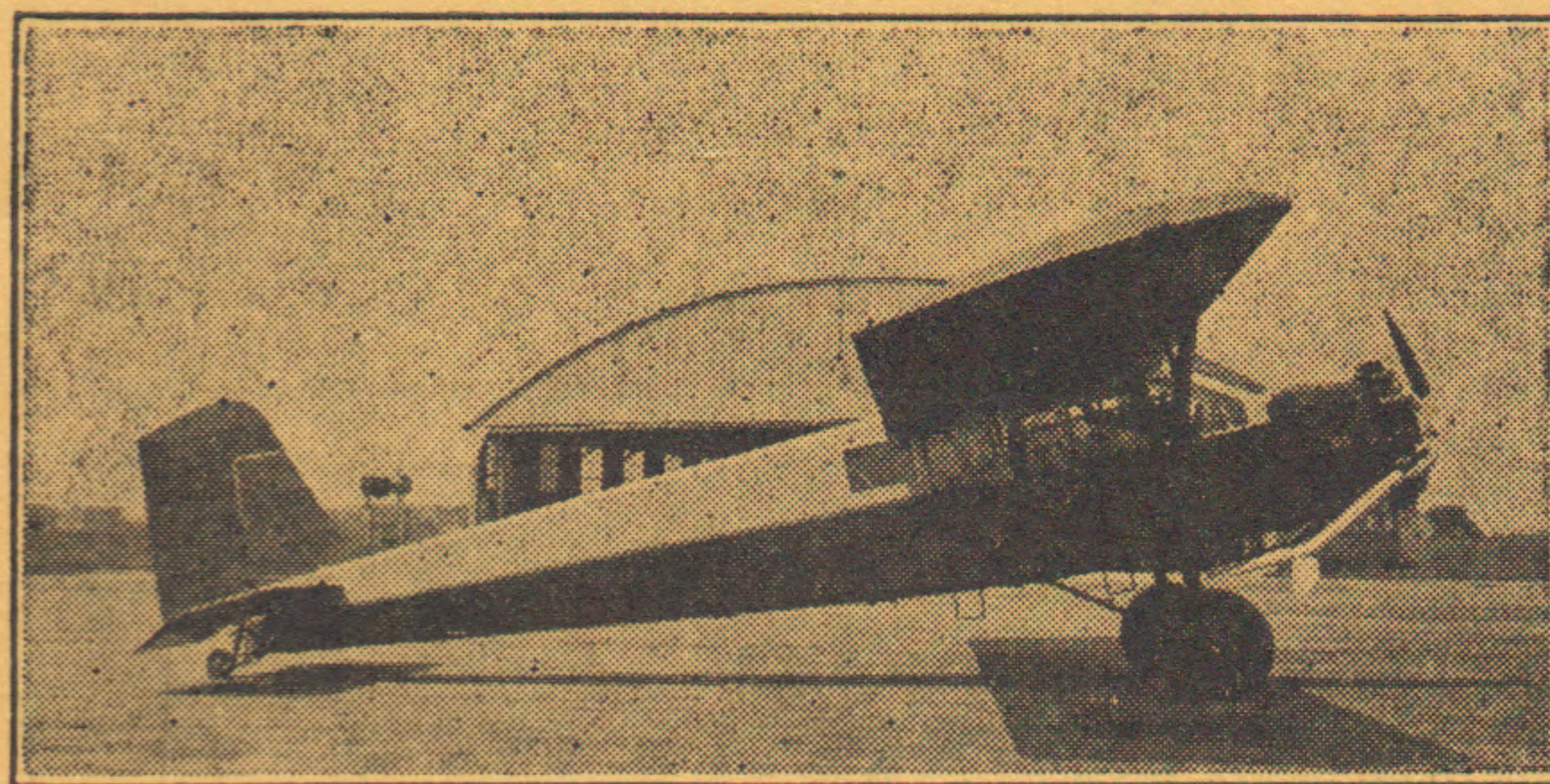
	Dayton	Springfield	Columbus
Dayton .....	.....	<b>\$2.85</b>	<b>\$9.50</b>
Springfield .....	\$1.50	.....	<b>6.65</b>
Columbus.....	5.00	3.50	.....

**Round Trip Fares in This Type - Dark Face**

FOR RESERVATIONS CALL

NEW YORKS  
AIRLINES TICKET OFFICE  
VAN. 3-0490  
HOTEL ROOSEVELT NEW YORK

# CENTRAL OHIO AIRWAYS



FAST PASSENGER SERVICE

*between*

DAYTON - SPRINGFIELD  
COLUMBUS

Connecting at Columbus with T.W.A. and American Airways for all points in the United States.

OPERATED BY

The Little-Greiner Flying Service, Inc.

### DAYTON-COLUMBUS-NEW YORK

Read Down		TABLE A Sept. 1, 1933		Read Up
P.M.	P.M.			P.M.
5:00	12:35	Lv. Dayton .....	Ar.	4:10
5:20	12:55	Lv. Springfield .....	Ar.	3:50
6:05	1:35	Ar. Columbus .....	Lv.	3:05
6:18	1:45	Lv. Columbus-T.W.A. ....	Ar.	2:48
7:38	3:05	Ar. Pittsburgh .....	Ar.	1:15
9:11	4:48	Ar. Harrisburg .....	Ar.	11:27
10:13	5:40	Ar. Philadelphia .....	Ar.	10:20
11:07	6:34	Ar. New York .....	Lv.	9:30
P.M.	P.M.			A.M.

### DAYTON-COLUMBUS-CLEVELAND

Read Down		TABLE D Sept. 1, 1933		Read Up
A.M.				A.M.
8:35		Lv. Dayton .....	Ar.	11:00
9:00		Lv. Springfield .....	Ar.	10:35
9:45		Ar. Calumbus .....	Lv.	9:50
10:02		Lv. Columbus-Am. A. ....	Ar.	9:03
11:04		Ar. Akron .....	Ar.	
11:26		Ar. Cleveland .....	Lv.	8:00
A.M.				A.M.

### DAYTON-COLUMBUS-CHICAGO

Read Down		Table B Sept. 1, 1933		Read Up
P.M.				P.M.
12:35		Lv. Dayton .....	Ar.	7:15
12:55		Lv. Springfield .....	Ar.	6:55
1:35		Ar. Columbus .....	Lv.	6:10
2:48		Lv. Columbus-T.W.A. ....	Ar.	5:45
3:06		Ar. Ft. Wayne .....	Ar.	3:35
4:22		Ar. Chicago .....	Lv.	2:30
P.M.				P.M.

### DAYTON-ST. LOUIS and WEST

Read Down		TABLE E Sept. 1, 1933		Read Up
P.M.				A.M.
12:35		Lv. Dayton .....	Ar.	11:00
12:55		Lv. Springfield .....	Ar.	10:35
1:35		Ar. Columbus .....	Lv.	9:50
2:48		Lv. Columbus-T.W.A. ....	Ar.	6:43
3:39		Ar. Indianapolis .....	Ar.	4:02
6:02		Ar. St. Louis .....	Ar.	1:55
8:23		Ar. Kansas City .....	Ar.	11:15
10:45		Ar. Wichita .....	Ar.	9:27
9:48		Ar. Los Angeles .....	Lv.	8:00
A.M.				A.M.

### DAYTON-COLUMBUS-WASHINGTON

Read Down		Table C Sept. 1, 1933		Read Up
P.M.				P.M.
12:35		Lv. Dayton .....	Ar.	4:10
12:55		Lv. Springfield .....	Ar.	3:50
1:35		Ar. Columbus .....	Lv.	3:05
1:45		Lv. Columbus-T.W.A. ....	Ar.	2:48
3:05		Ar. Pittsburgh-T.W.A. ....	Lv.	1:15
5:50		Lv. Pittsburgh-Pen. A. ....	Ar.	9:50
7:45		Ar. Washington-Pen. A. ...	Lv.	8:00
P.M.				A.M.

### DAYTON-CLEVELAND-NEW YORK

Read Down		TABLE F Sept. 1, 1933		Read Up
A.M.				
8:35		Lv. Dayton .....		
9:00		Lv. Springfield .....		
9:45		Ar. Columbus .....		
10:02		Lv. Columbus-Am. A. ....		
11:26		Ar. Cleveland .....		
11:56		Lv. Cleveland-United A. ....		
2:30		Ar. New York .....		
P.M.				

SUBJECT TO CHANGE

SUBJECT TO CHANGE